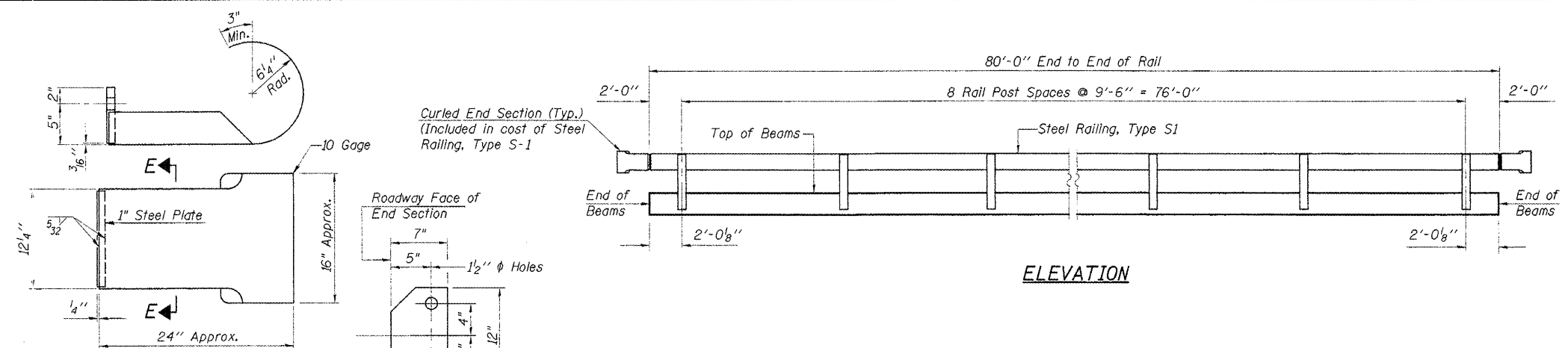
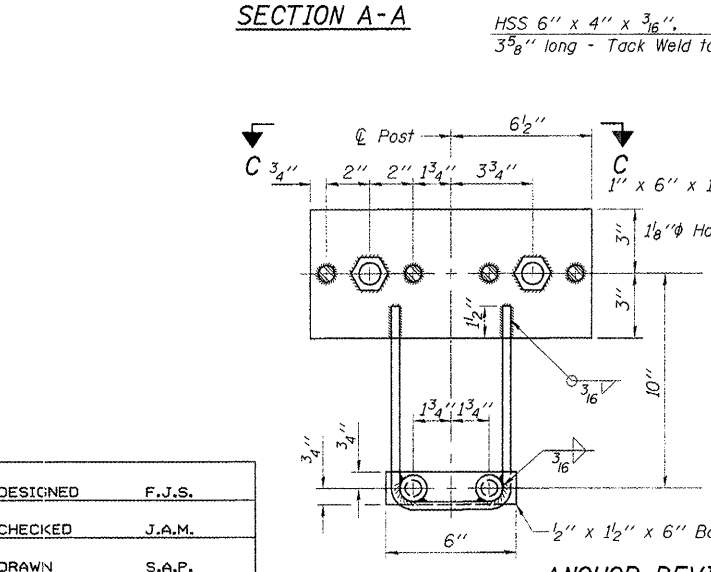
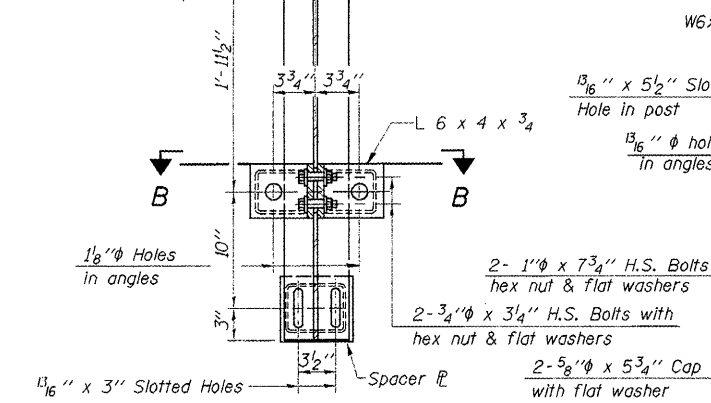
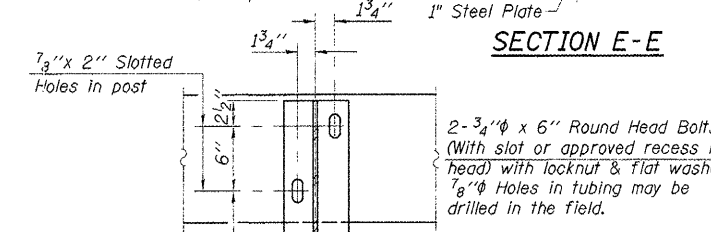


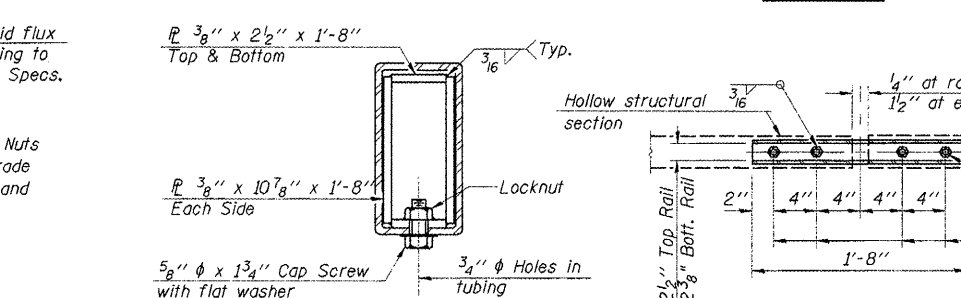
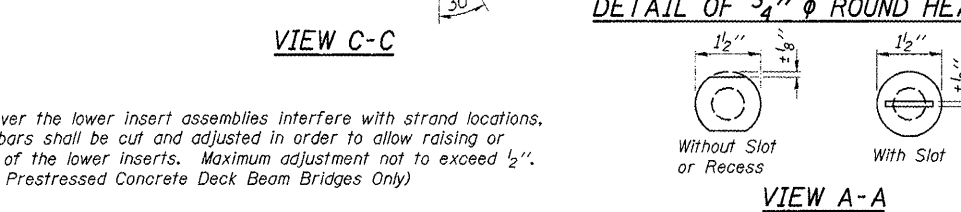
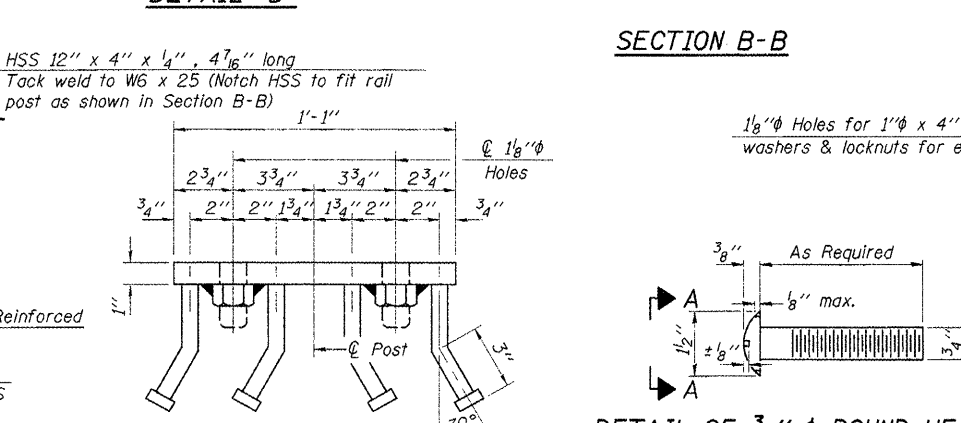
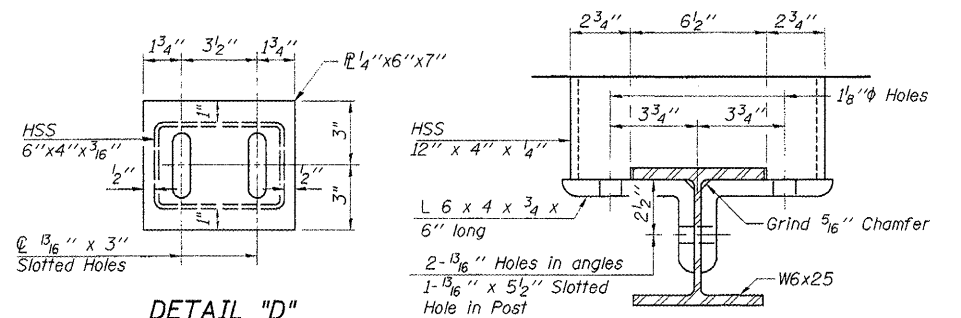
ROUTE NO.	SECTION	COUNTY	TOTAL SHEETS	SHEET NO.
T.R. 3		MARSHALL/BUREAU	14	6
ROAD DIST.		ILLINOIS	SARATOGA/MILO	
*05-10116-00-BR			CONTRACT NO. 89398	
08-16114-00-BR				



**CURLED END SECTION DETAILS**  
(4 Required)



**ANCHOR DEVICE**  
\* Threaded areas shall be plugged or blocked off during casting of beam.



**PLAN-BOTT. SPLICE TYPICAL**

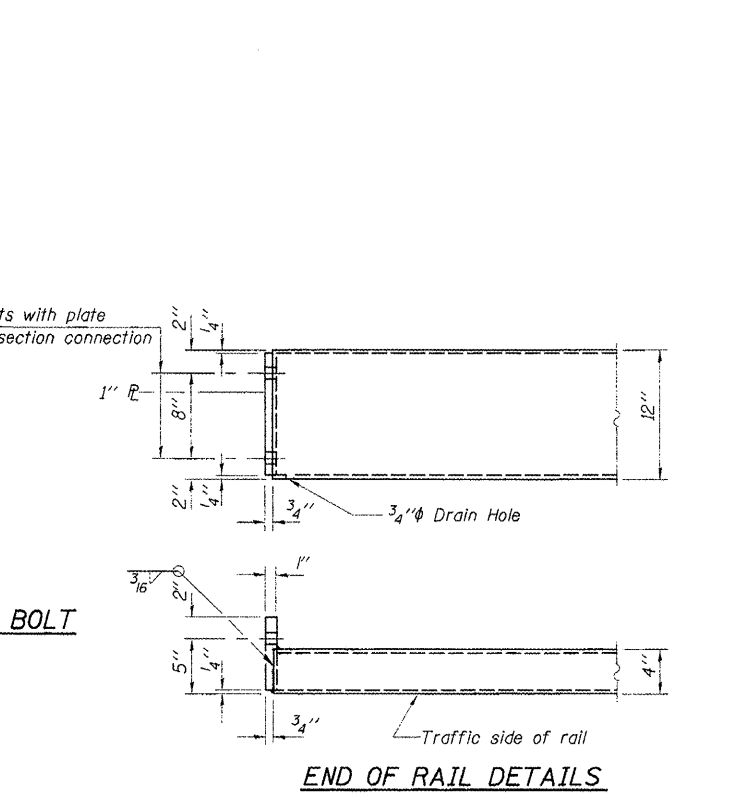
**NOTES**

All field drilled holes shall be coated with an approved zinc rich paint before erection.

All steel rail elements shall be galvanized according to Article 509.05 of the Standard Specifications. In addition to the elements specified in Article 509.05, all angles and spacers are to be galvanized in accordance with AASHTO M-111, and all cap screws, washers, and lock washers are to be galvanized in accordance with AASHTO M-232.

The 3/4" (M20) diameter high strength bolts used to connect the 6x4x3/4" angles to the post shall be tightened in accordance with Article 504.04(f)(2) of the Standard Specifications. The 1" (M24) diameter high strength bolts connecting steel to concrete shall be brought to a snug tight condition and given an additional 1/8 turn. The 5/8" (M16) cap screws in the bottom of the posts shall be brought to a snug tight condition only.

\*\*\* The studs for the anchor devices shall be placed below the top reinforcement bars and the outermost longitudinal reinforcement bar shall be placed directly above the studs of the rail post anchor device.



**BILL OF MATERIAL**

Item	Unit	Quantity
Steel Railing, Type S1	Foot	160

**STEEL RAILING, TYPE S1**

SARATOGA - MILO ROAD DISTRICTS  
SECTIONS 05-10116-00-BR & 08-16114-00-BR  
MARSHALL - BUREAU COUNTIES  
STATION 15+05

DESIGNED	F.J.S.
CHECKED	J.A.M.
DRAWN	S.A.P.
CHECKED	J.A.M.