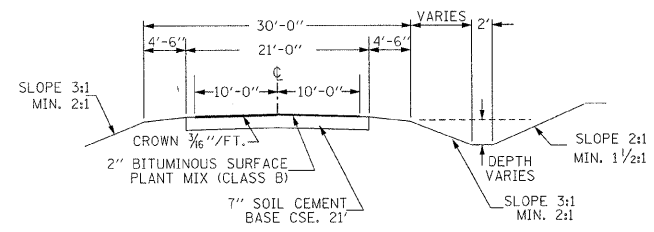
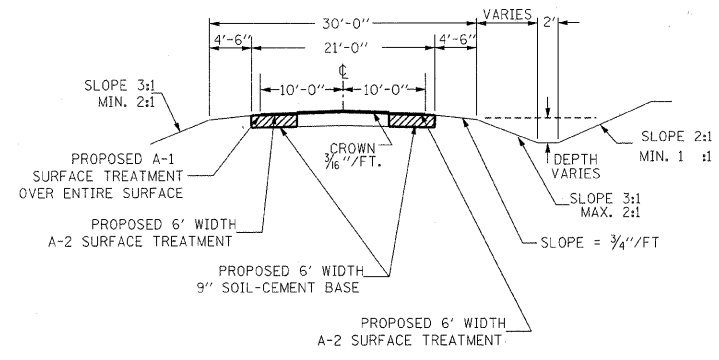


F.A.S.	SECTION	COUNTY	TOTAL SHEETS	SHEET NO.
1819	05-00074-00-RS	WABASH	2	2
FED. ROAD DIST. NO. 7	ILLINOIS	GOODSON ORCHARD ROAD		
LEC JOB # H061005WB		CONTRACT # 95549		

**TYPICAL CROSS SECTION EXISTING**



**TYPICAL CROSS SECTION PROPOSED**



**GENERAL NOTES:**

THIS SECTION CONSISTS OF PAVEMENT REMOVAL, AN A-2 BITUMINOUS SURFACE TREATMENT ON A 9" SOIL-CEMENT BASE, AND OTHER MISCELLANEOUS ITEMS NECESSARY TO COMPLETE THE PROJECT, ALL IN ACCORDANCE WITH THE PLANS, SPECIAL PROVISIONS AND "STANDARD SPECIFICATIONS FOR ROAD AND BRIDGE CONSTRUCTION" ADOPTED JANUARY 1, 2007.

THE EXISTING GRADE, ALIGNMENT, DRAINAGE STRUCTURES, BASE AND SURFACE WERE CONSTRUCTED UNDER SECTIONS 33-10 AND 33-20, 89-00054-00-RS AND SHALL REMAIN IN PLACE. ALL STATIONS REFERRED TO IN THE PLANS AND PROPOSAL ARE REFERENCED TO THE ABOVE MENTIONED SECTIONS.

MAXIMUM PERCENT OF GRADE	-5.785 %
MINIMUM STOPPING SIGHT DISTANCE	525 FT
DESIGN SPEED	50 MPH
CURRENT ADT	1000 VPD
DESIGN ADT (20 YEAR)	1250 VPD

THE QUANTITY SHOWN IN THE SUMMARY OF QUANTITIES FOR PROCESSING SOIL-CEMENT BASE COURSE 9" ALLOWS 135 SQ YD FOR SIDEROAD AND 12,893 SQ YD FOR MAIN LINE.

FOR THE A-2 SURFACE TREATMENT OF THE SIDEROAD 302.5 GALLONS ARE ALLOWED FOR BITUMINOUS MATERIALS (PRIME COAT), 2420 GALLONS ARE ALLOWED FOR BITUMINOUS MATERIALS (COVER & SEAL COAT), 30 TONS ARE ALLOWED FOR COVER COAT AGGREGATE AND 15 TONS ARE ALLOWED FOR SEAL COAT AGGREGATE.

THE FOLLOWING RATES HAVE BEEN USED TO CALCULATE PLAN QUANTITIES:

BITUMINOUS MATERIALS (PRIME COAT)	0.25 GAL / SQ YD
BITUMINOUS MATERIALS (COVER COAT)	0.50 GAL / SQ YD
BITUMINOUS MATERIALS (SEAL COAT)	0.50 GAL / SQ YD
COVER COAT AGGREGATE	25 LBS / SQ YD
SEAL COAT AGGREGATE	25 LBS / SQ YD

**SUMMARY OF QUANTITIES**

QUANTITY	UNIT	ITEM	CODE NUMBER
12893.00	SQ YD	PROCESSING SOIL-CEMENT BASE COURSE 9"	35200400
6020.00	100 WT	CEMENT	35200500
3247.00	GAL	BITUMINOUS MATERIALS (PRIME COAT)	40300100
24503.00	GAL	BITUMINOUS MATERIALS (COVER AND SEAL COATS)	40300300
325.00	TON	COVER COAT AGGREGATE	40300500
273.00	TON	SEAL COAT AGGREGATE	40300600
1.00	L SUM	MOBILIZATION	67100100
29073	FOOT	PAINT PAVEMENT MARKING-LINE 4"	78001110 *

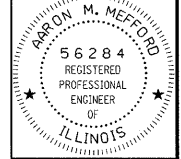
\* SPECIALTY ITEMS

323 W. 3RD ST.  
P.O. BOX 160  
MT. CARMEL, IL  
62863  
PHONE:  
(618)-262-8651  
FAX:  
(618)-263-3327

405 W. STATE ST.  
SUITE 1  
PRINCETON, IN  
47670  
PHONE:  
(812)-386-7611  
FAX:  
(812)-385-2812

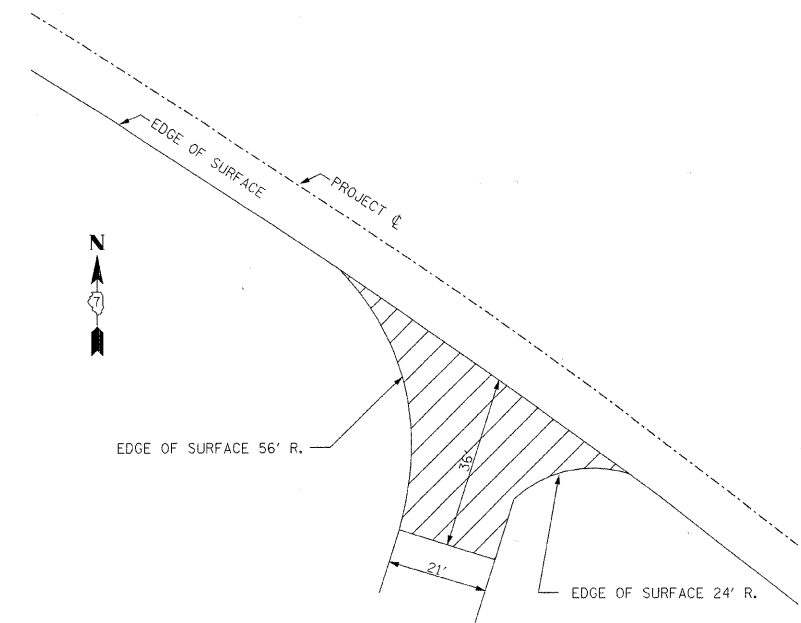


PROFESSIONAL DESIGN FIRM  
LAND SURVEY &  
PROFESSIONAL  
ENGINEERING  
CORPORATION  
184-000887  
(62-032435)(35-002769)



AARON M. MEFFORD  
NAME  
Signature  
SIGNATURE  
12-08-08  
DATE  
11-30-09  
EXPIRES

**SIDE ROAD - STA 84+83 RIGHT**

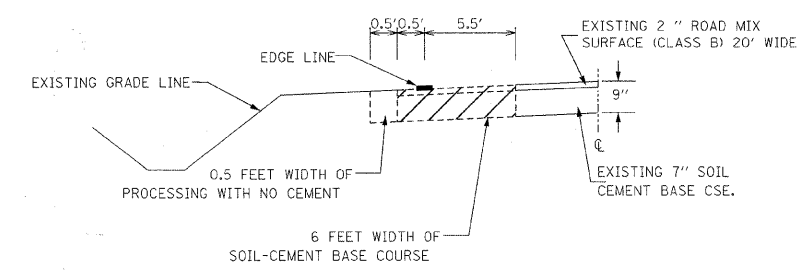


**SCHEDULE OF PAVEMENT MARKINGS**

STATION	TO	STATION	LOCATION	LENGTH - FOOT
83+00		171+33	CENTERLINE	1465
			EDGE LINE	
83+00		84+70	RT.	170
85+15		94+90	RT.	975
95+40		171+33	RT.	7593
			EDGE LINE	
83+00		84+00	LT.	100
84+75		171+33	LT.	8658
			NO PASSING	
83+00		106+00	RT.	2300
83+10		115+65	LT.	3255
120+60		136+81	RT.	1621
132+80		148+50	LT.	1570
160+30		171+13	RT.	1083
168+30		171+13	LT.	283
				TOTAL 29,073

THE ABOVE QUANTITY IS SHOWN IN THE PAVEMENT MARKING-LINE 4" IN THE SUMMARY OF QUANTITIES.

**DETAIL OF SOIL-CEMENT BASE COURSE**



**UTILITIES**

MT. CARMEL PUBLIC UTILITY  
316 MARKET STREET  
MT. CARMEL, IL 62863  
618-262-5151

NORRIS ELECTRIC COOP.  
RT. 130 SOUTH  
NEWTON, IL 62448  
618-299-6101

RURAL WABASH WATER DISTRICT  
P.O. BOX 55  
LANCASTER, IL 62855  
618-665-3311

VERIZON TELEPHONE CO.  
225 EAST CHESTNUT  
ONLEY, IL 62450  
618-395-6191

J.U.L.I.E.  
800-892-0123

NOTE: THE SIDEROAD ABOVE SHALL HAVE A-2 BITUMINOUS SURFACE TREATMENT ON A PROPOSED 9" SOIL-CEMENT BASE IN THE AREA SHOWN.