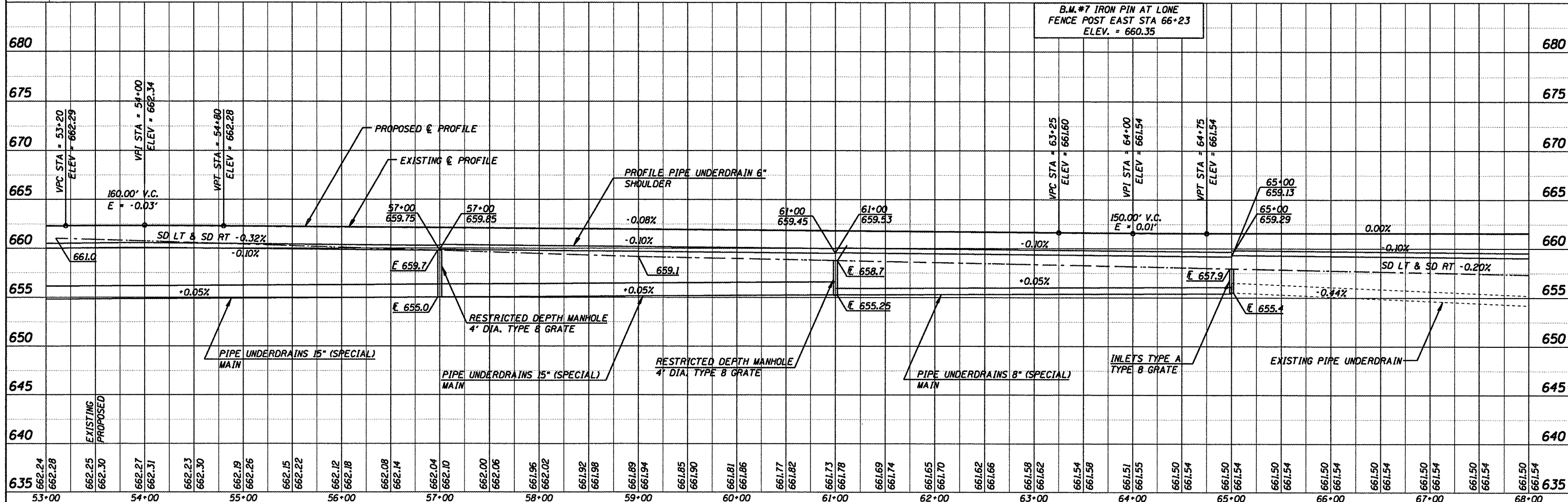
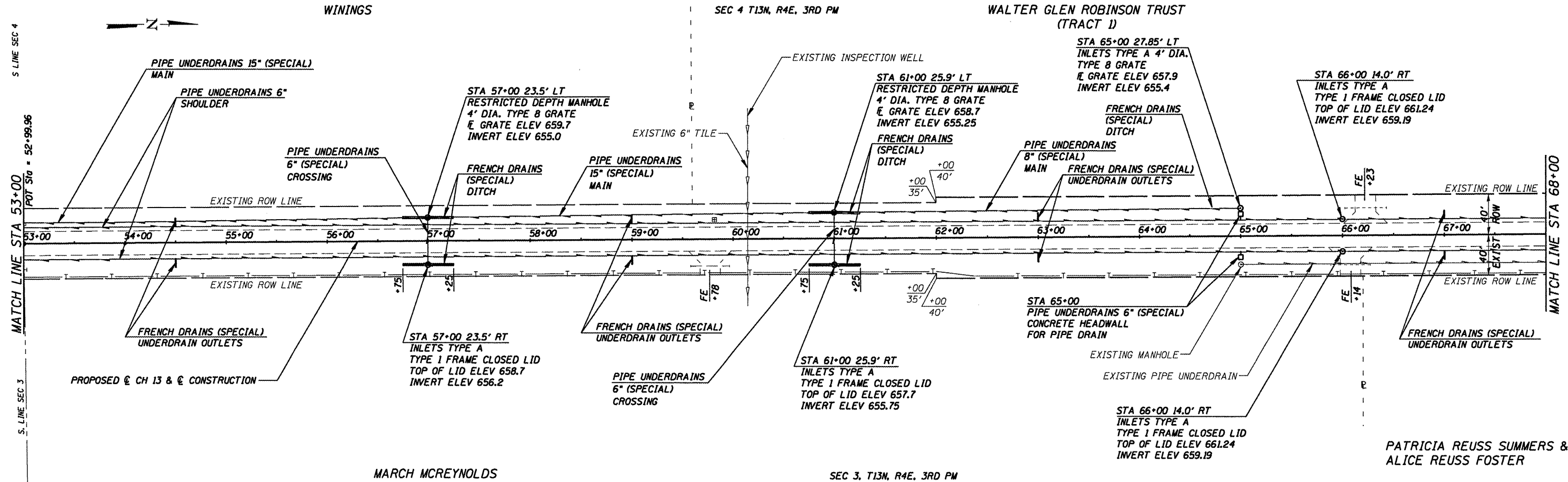


DATE	
BY	
DESIGNED	
PLANNED	
ALIGNED	
CHECKED	
NOTE BOOK	
NO.	
FILE NAME	

DATE	
BY	
DESIGNED	
PLANNED	
ALIGNED	
CHECKED	
NOTE BOOK	
NO.	
FILE NAME	



CUMMINS ENGINEERING CORPORATION JOB = 2096.1 FILE NAME = pp04001.dgn PLOT SCALE = 1/8\"/>	DESIGNED - NAK	REVISED -	MOULTRIE COUNTY BETHANY FINDLAY RD. IMPROVEMENTS PLAN & PROFILE - CH 13 SCALE: SHEET NO. OF SHEETS STA. 53+00 TO STA. 68+00	F.A.S. SECTION COUNTY TOTAL SHEETS SHEET NO.
	DRAWN - AJH	REVISED -		650 02-00062-01-PV MOULTRIE 44 11
	CHECKED - NAK	REVISED -		CH 13, BETHANY FINDLAY RD. CONTRACT NO. 95568
	DATE - 10/08/2008	REVISED -		FED. ROAD DIST. NO. ILLINOIS FED. AID PROJECT