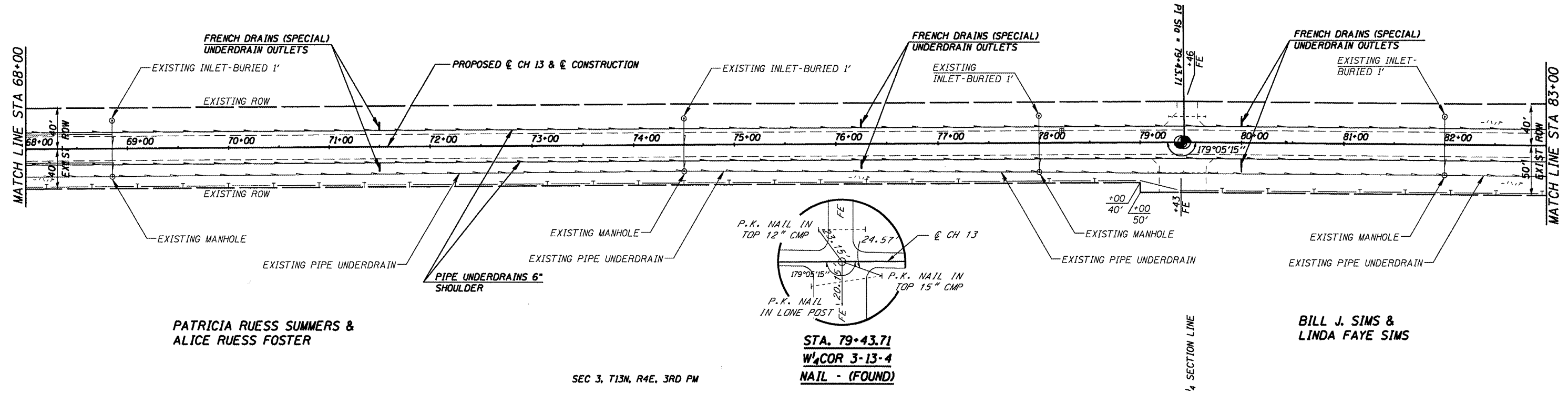


WALTER GLEN ROBINSON TRUST  
(TRACT 1)

DATE	
BY	
DESIGNED	
DRAWN	
CHECKED	
DATE	
NO.	



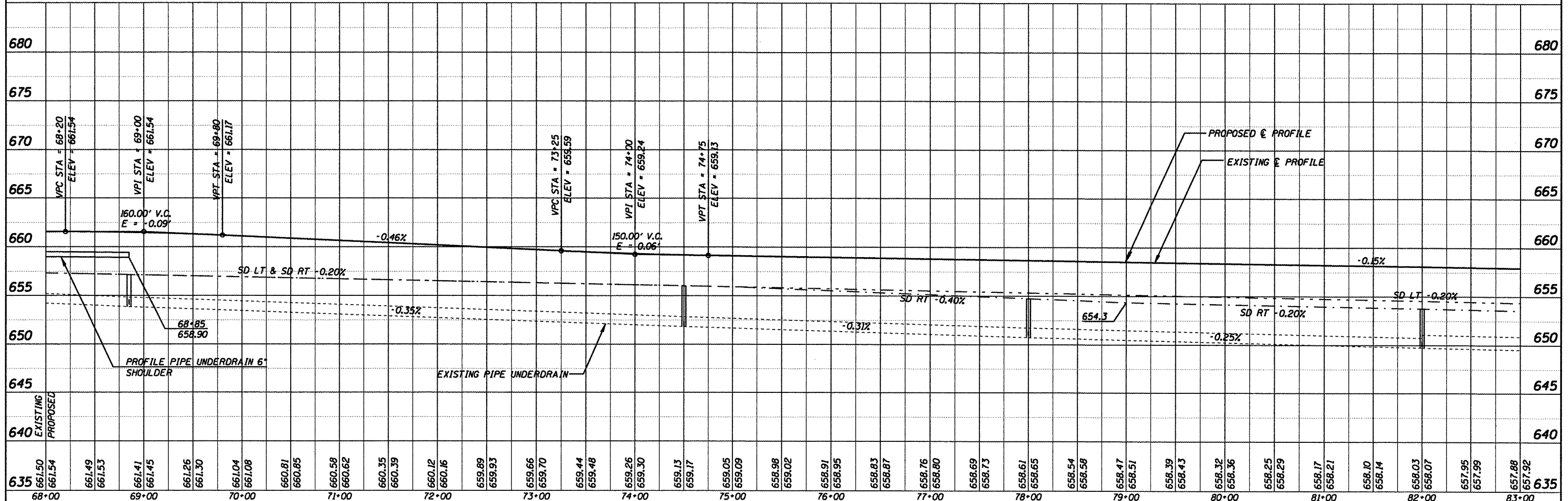
PATRICIA RUESS SUMMERS &  
ALICE RUESS FOSTER

BILL J. SIMS &  
LINDA FAYE SIMS

SEC 3, T13N, R4E, 3RD PM

STA. 79+43.71  
W<sub>1</sub>COR 3-13-4  
NAIL - (FOUND)

DATE	
BY	
DESIGNED	
DRAWN	
CHECKED	
DATE	
NO.	



635	661.50	661.54	661.49	661.53	661.41	661.45	661.26	661.30	661.04	661.08	660.81	660.85	660.58	660.62	660.35	660.39	660.12	660.16	659.89	659.93	659.66	659.70	659.44	659.48	659.26	659.30	659.13	659.17	659.05	659.09	658.98	659.02	658.91	658.95	658.83	658.87	658.76	658.80	658.69	658.73	658.61	658.65	658.54	658.58	658.47	658.51	658.39	658.43	658.32	658.36	658.25	658.29	658.17	658.21	658.10	658.14	658.03	658.07	657.95	657.99	657.88	657.92	635
68+00	69+00	70+00	71+00	72+00	73+00	74+00	75+00	76+00	77+00	78+00	79+00	80+00	81+00	82+00	83+00																																																

CUMMINS  
ENGINEERING  
CORPORATION

JOB = 2096.1  
FILE NAME = pp25001.dgn  
PLOT SCALE = 100.0000' / IN.  
PLOT DATE = 12/22/2008

DESIGNED - NAK  
DRAWN - AJH  
CHECKED - NAK  
DATE - 10/08/2008

REVISED -  
REVISED -  
REVISED -  
REVISED -

MOULTRIE COUNTY  
BETHANY FINDLAY RD. IMPROVEMENTS

PLAN & PROFILE - CH 13

SCALE: SHEET NO. OF SHEETS STA. 68+00 TO STA. 83+00

F.A.S. RTE.	SECTION	COUNTY	TOTAL SHEETS	SHEET NO.
650	02-00062-01-PV	MOULTRIE	44	12
CH 13, BETHANY FINDLAY RD.		CONTRACT NO. 95568		
FED. ROAD DIST. NO.		ILLINOIS FED. AID PROJECT		