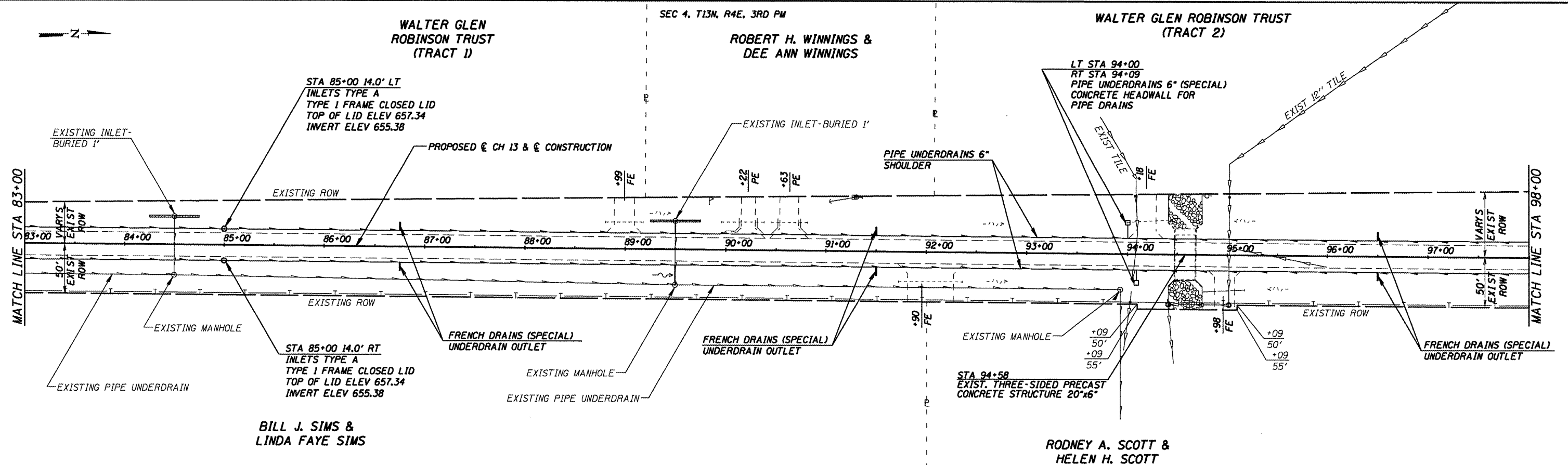


DATE	
BY	
REVISIONS	
NOTED	
PLANNED	
DESIGNED	
CHECKED	
DRAWN	
FILE NAME	
NO.	

DATE	
BY	
REVISIONS	
NOTED	
PLANNED	
DESIGNED	
CHECKED	
DRAWN	
FILE NAME	
NO.	

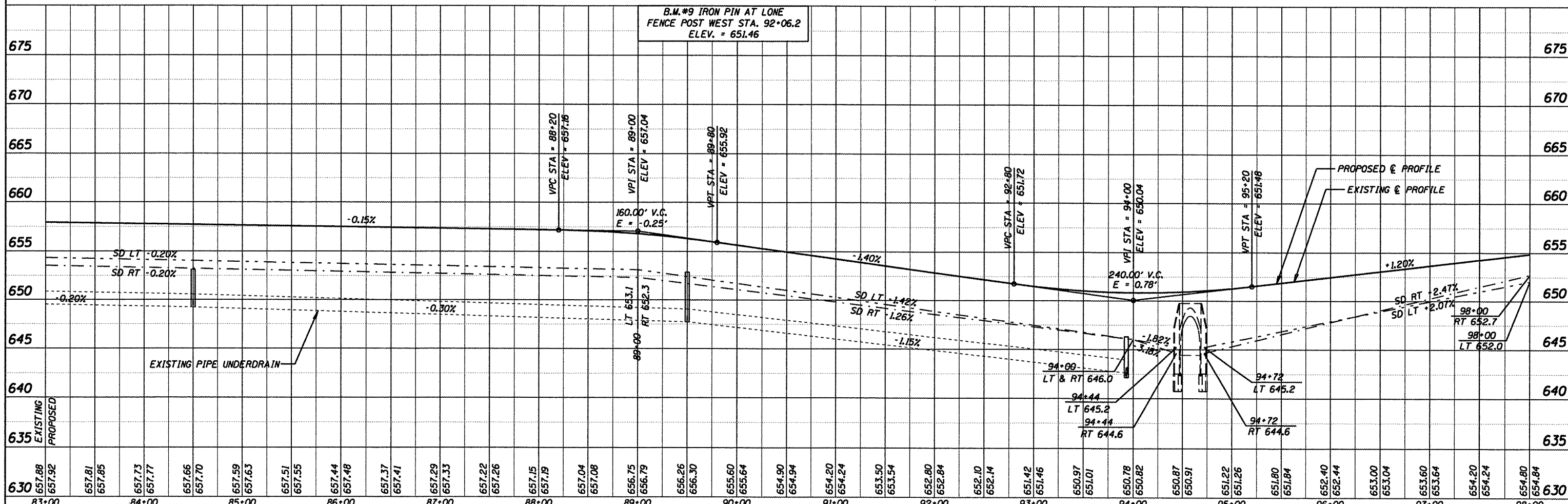


BILL J. SIMS &
LINDA FAYE SIMS

RODNEY A. SCOTT &
HELEN H. SCOTT

SEC 3, T13N, R4E, 3RD PM

B.M.#9 IRON PIN AT LONE
FENCE POST WEST STA. 92+06.2
ELEV. = 651.46



83+00	84+00	85+00	86+00	87+00	88+00	89+00	90+00	91+00	92+00	93+00	94+00	95+00	96+00	97+00	98+00																																															
630	630.88	630.92	630.81	630.85	630.73	630.77	630.66	630.70	630.59	630.63	630.51	630.55	630.44	630.48	630.37	630.41	630.29	630.33	630.22	630.26	630.15	630.19	630.04	630.08	629.75	629.79	629.26	629.30	629.60	629.64	629.90	629.94	629.40	629.24	629.50	629.54	629.80	629.84	629.10	629.14	629.42	629.46	629.97	629.01	629.78	629.82	629.87	629.91	629.22	629.26	629.80	629.84	629.40	629.44	629.00	629.04	629.60	629.64	629.20	629.24	629.80	629.84

CUMMINS
ENGINEERING
CORPORATION

JOB = 2096.1
FILE NAME = pp06001.dgn
PLOT SCALE = 1/8" = 100.0000' / IN.
PLOT DATE = 12/22/2008

DESIGNED - NAK
DRAWN - AJH
CHECKED - NAK
DATE - 10/08/2008

REVISED -
REVISED -
REVISED -
REVISED -

MOULTRIE COUNTY
BETHANY FINDLAY RD. IMPROVEMENTS

PLAN & PROFILE - CH 13

SCALE: SHEET NO. OF SHEETS STA. 83+00 TO STA. 98+00

F.A.S. RTE.	SECTION	COUNTY	TOTAL SHEETS	SHEET NO.
650	02-00062-01-PV	MOULTRIE	44	13
CH 13, BETHANY FINDLAY RD.		CONTRACT NO. 95568		
FED. ROAD DIST. NO.		ILLINOIS FED. AID PROJECT		