

Curve 1

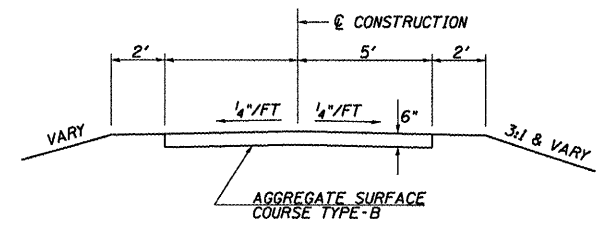
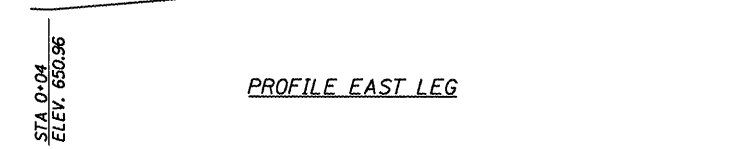
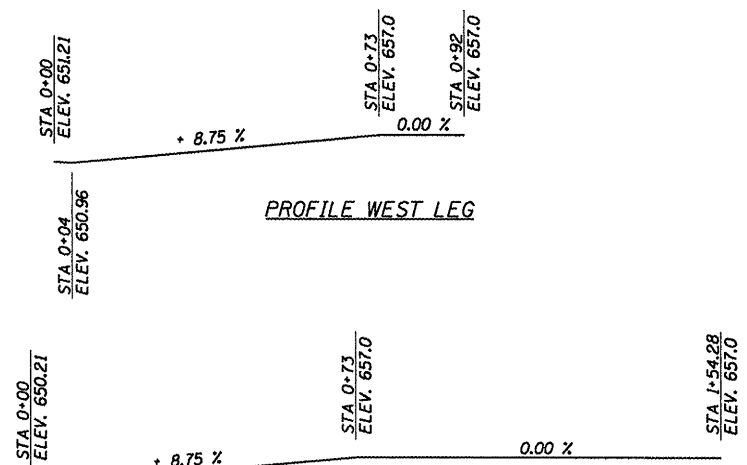
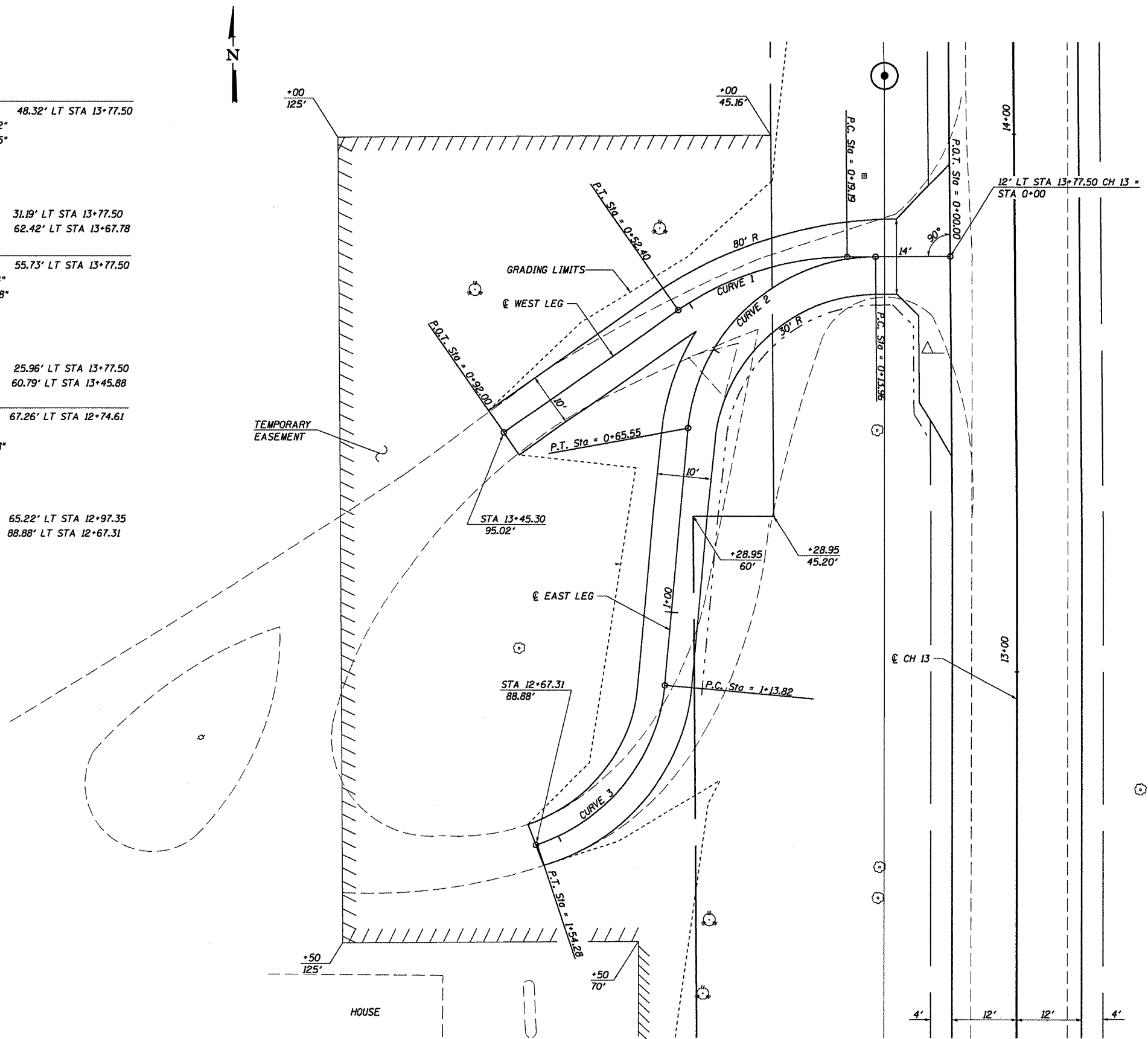
PI	0+36.32	48.32' LT STA 13+77.50
Δ	34° 35' 32"	
D	104° 10' 55"	
T	17.13'	
R	55.00'	
L	33.21'	
E	2.60	
PC	0+19.19	31.19' LT STA 13+77.50
PT	0+52.40	62.42' LT STA 13+67.78

Curve 2

PI	0+45.73	55.73' LT STA 13+77.50
Δ	84° 27' 34"	
D	163° 42' 08"	
T	31.77'	
R	35.00'	
L	51.59'	
E	12.27	
PC	0+13.96	25.96' LT STA 13+77.50
PT	0+65.55	60.79' LT STA 13+45.88

Curve 3

PI	1+36.65	67.26' LT STA 12+74.61
Δ	66° 13' 13"	
D	163° 42' 08"	
T	22.82'	
R	35.00'	
L	40.45'	
E	6.78	
PC	1+13.83	65.22' LT STA 12+97.35
PT	1+54.28	88.88' LT STA 12+67.31



CUMMINS ENGINEERING CORPORATION	JOB = 2096.1	DESIGNED - NAK	REVISED -
	FILE NAME = entrance.dgn	DRAWN - AJH	REVISED -
	PLOT SCALE = 21,5873 ft / IN.	CHECKED - NAK	REVISED -
	PLOT DATE = 12/22/2008	DATE - 10/15/2008	REVISED -

**MOULTRIE COUNTY
BETHANY FINDLAY RD. IMPROVEMENTS**

ENTRANCE DETAIL - LT STA 13 + 77.50

F.A.S. RTE.	SECTION	COUNTY	TOTAL SHEETS	SHEET NO.
650	02-00062-01-PV	MOULTRIE	44	21
CH 13, BETHANY FINDLAY RD.		CONTRACT NO. 95568		
FED. ROAD DIST. NO. ILLINOIS FED. AID PROJECT				