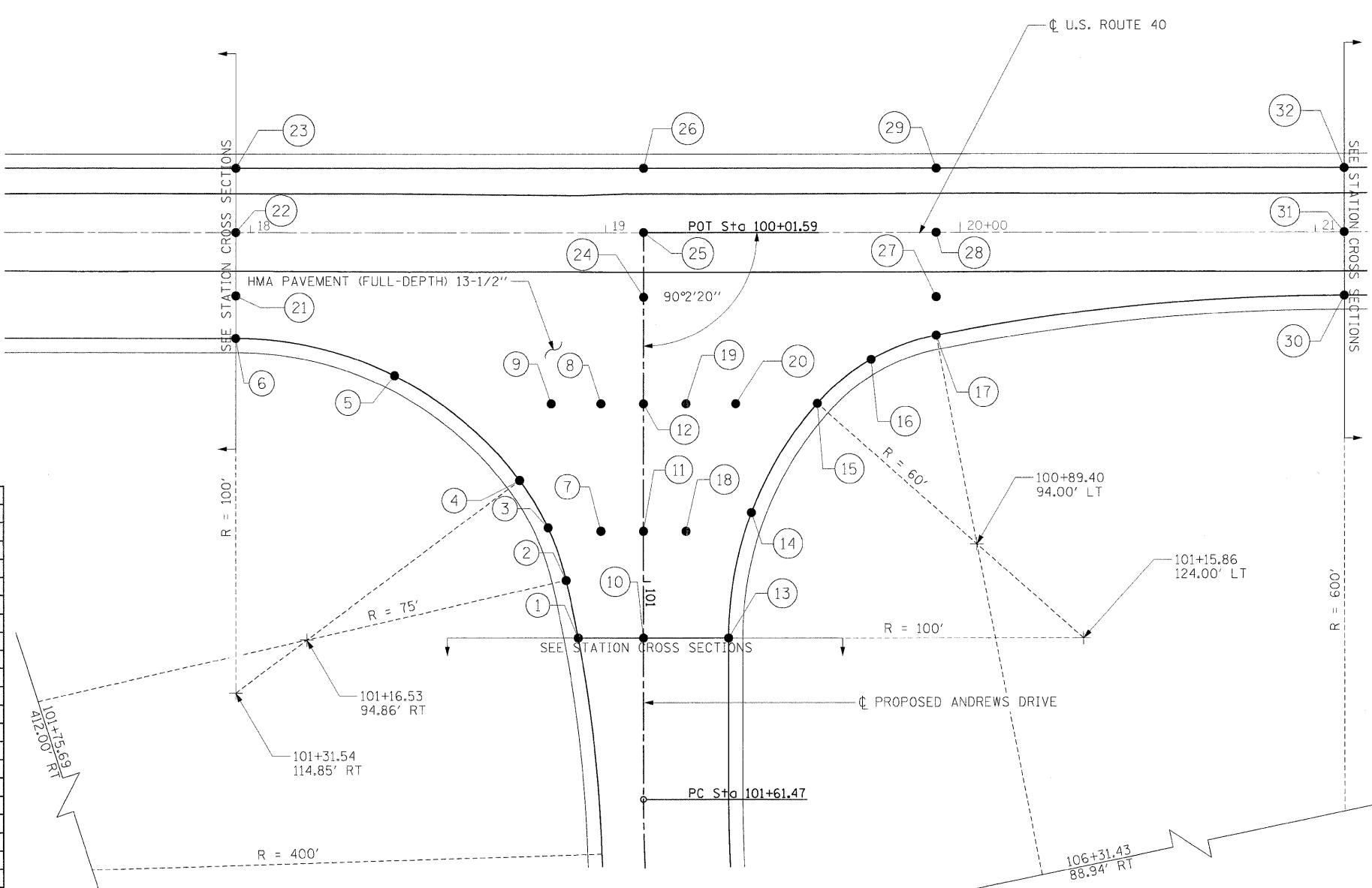


FILE NAME = I:\04\_Jobs\0452012\CADD\Road\Sheet\C-502-INT-US-40.dgn

POINT	NORTHING	EASTING	ELEV.	STATION	OFFSET	ALIGN. USED
1	808251.24	2521477.10	533.66'	101+15.86	18.39' RT	PRAND
2	808264.29	2521466.91	533.71'	100+99.66	21.78' RT	PRAND
3	808275.30	2521455.84	533.82'	100+84.89	26.86' RT	PRAND
4	808283.78	2521442.72	533.92'	100+71.49	34.89' RT	PRAND
5	808294.62	2521398.07	534.76'	100+42.07	70.18' RT	PRAND
6	808284.34	2521353.28	535.53'	17+95.79	29.87' RT	EXUS40
7	808280.90	2521469.64	534.03'	100+85.95	12.00' RT	PRAND
8	808313.29	2521453.72	534.78'	100+49.86	12.00' RT	PRAND
9	808307.10	2521441.16	534.77'	100+49.87	26.00' RT	PRAND
10	808259.35	2521493.60	533.73'	101+15.86	0.00' RT	PRAND
11	808286.28	2521480.37	534.21'	100+85.85	0.00' RT	PRAND
12	808318.59	2521464.49	534.79'	100+49.85	0.00' RT	PRAND
13	808269.93	2521515.14	533.37'	101+15.86	24.00' LT	PRAND
14	808304.51	2521505.34	533.84'	100+80.51	30.46' LT	PRAND
15	808340.32	2521508.41	534.06'	100+49.72	49.00' LT	PRAND
16	808358.10	2521516.55	534.47'	100+37.36	64.15' LT	PRAND
17	808372.31	2521529.98	534.87'	19+93.17	28.99' RT	EXUS40
18	808293.66	2521491.09	534.03'	100+85.76	12.00' LT	PRAND
19	808323.89	2521475.25	534.61'	100+49.85	12.00' LT	PRAND
20	808330.17	2521487.84	534.40'	100+49.84	26.00' LT	PRAND
21	808295.11	2521347.98	535.75'	17+95.79	17.87' RT	EXUS40
22	808311.14	2521340.09	536.00'	17+95.79	0.00' RT	EXUS40
23	808327.40	2521332.08	535.85'	17+95.79	18.13' LT	EXUS40
24	808345.55	2521451.24	535.33'	100+19.81	0.00' RT	PRAND
25	808361.90	2521443.20	535.56'	19+10.72	0.00' RT	EXUS40
26	808378.17	2521435.19	535.41'	19+10.72	18.13' LT	EXUS40
27	808382.05	2521525.18	535.02'	19+93.17	17.88' RT	EXUS40
28	808398.32	2521517.17	535.25'	19+93.17	0.00' RT	EXUS40
29	808414.57	2521509.17	534.89'	19+93.17	18.11' LT	EXUS40
30	808433.05	2521628.19	534.61'	21+08.11	17.88' RT	EXUS40
31	808449.09	2521620.30	534.85'	21+08.11	0.00' RT	EXUS40
32	808465.34	2521612.29	534.67'	21+08.11	18.12' LT	EXUS40



**STATE OF ILLINOIS  
DEPARTMENT OF TRANSPORTATION**

**INTERSECTION DETAIL - ANDREWS DR. & U.S. ROUTE 40**

USER NAME = Pop0835	DESIGNED - MH	REVISED -
PLOT SCALE = 20,0000' / in.	DRAWN - DJP	REVISED -
PLOT DATE = 12/29/2008	CHECKED - MH	REVISED -
	DATE -	REVISED -

SCALE: 50 SHEET NO. OF SHEETS STA. TO STA.

F.A. RTE.	SECTION	COUNTY	TOTAL SHEETS	SHEET NO.
	99-00036-00-BR	BOND	99	27
CONTRACT NO. 97366				
FED. ROAD DIST. NO. ILLINOIS FED. AID PROJECT				