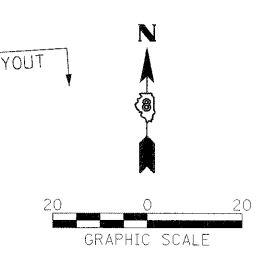
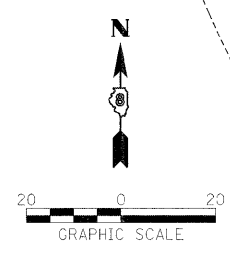
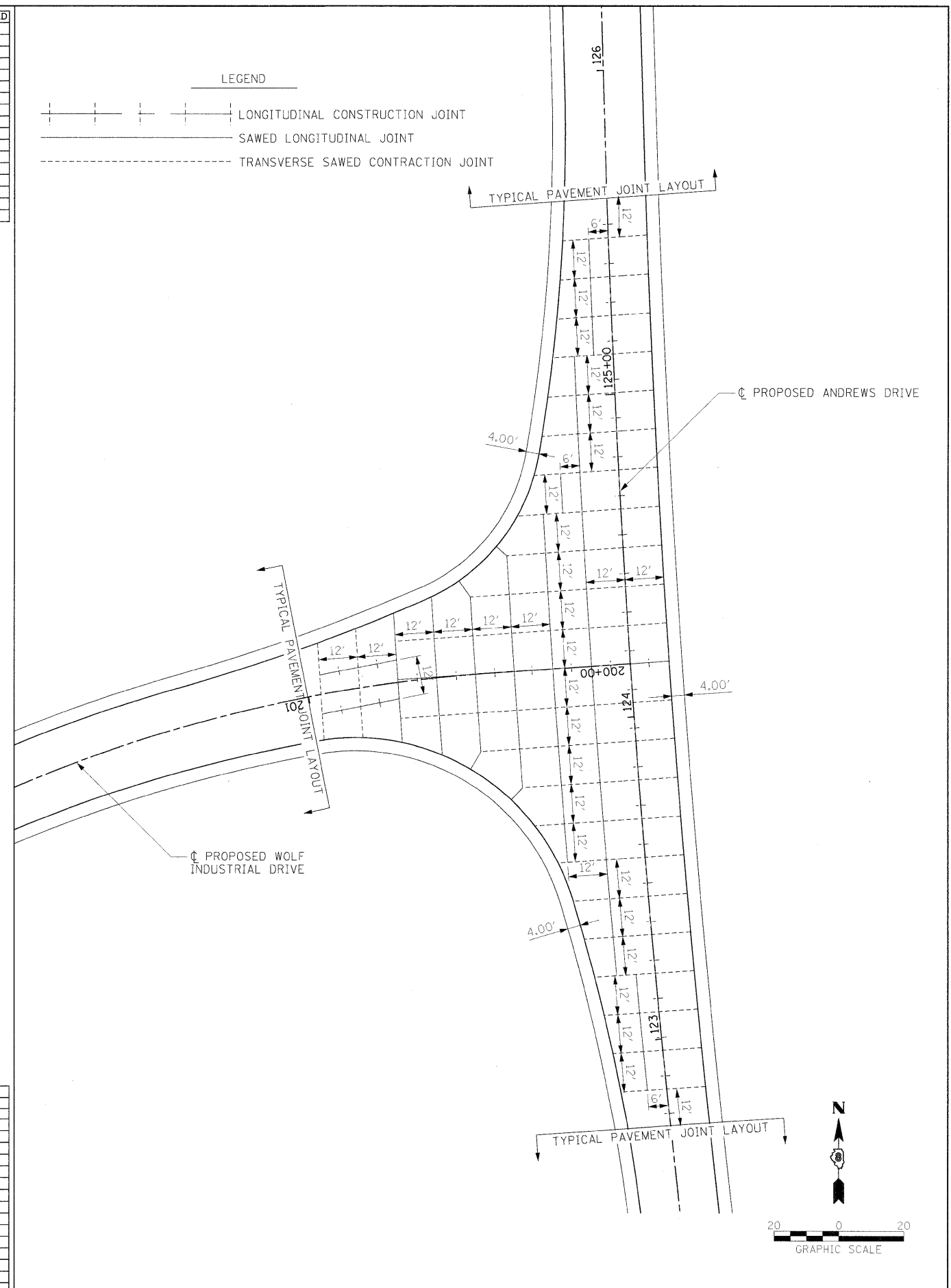
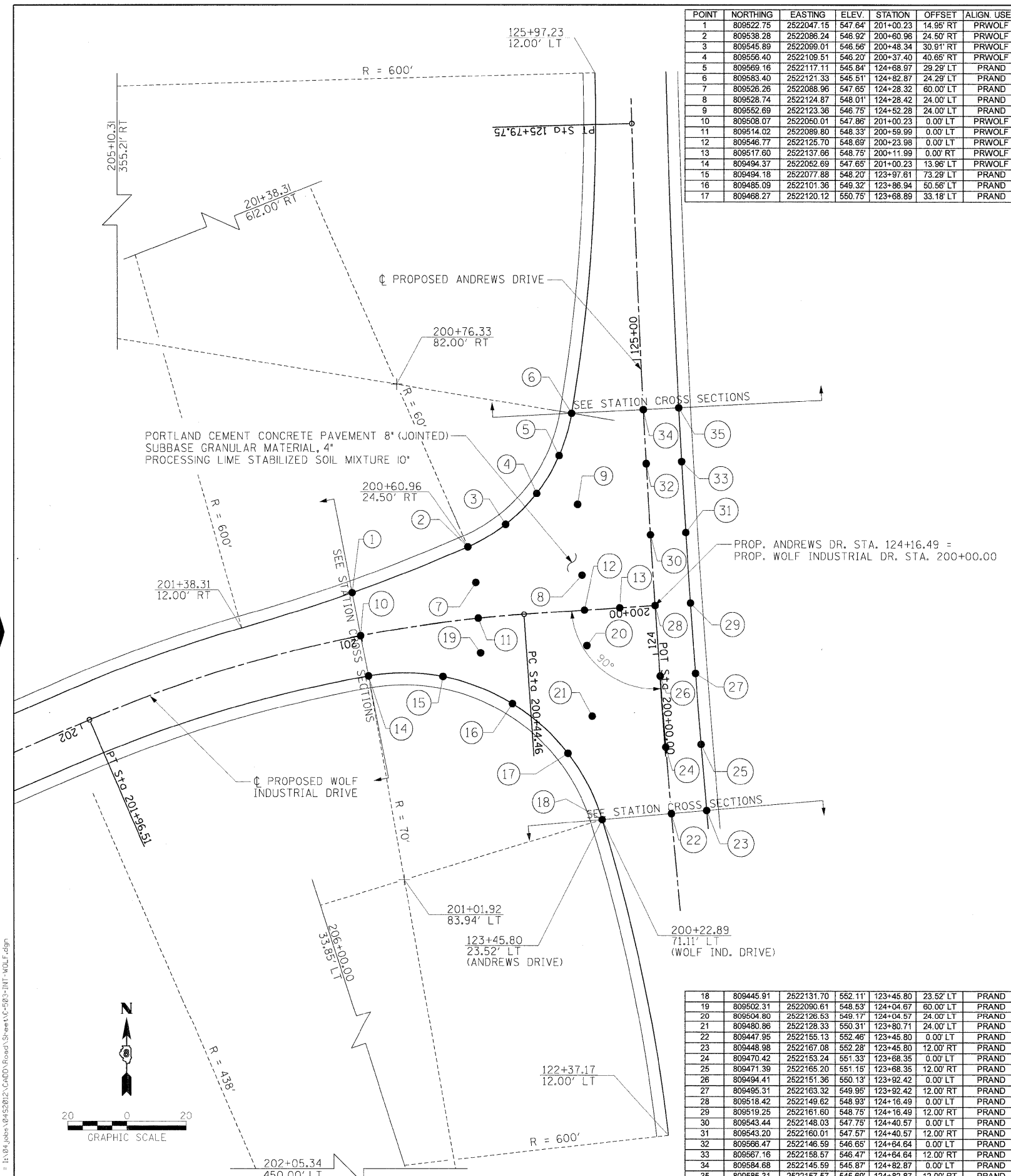
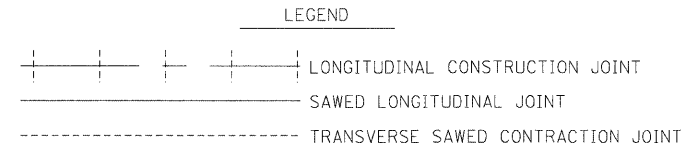


POINT	NORTHING	EASTING	ELEV.	STATION	OFFSET	ALIGN. USED
1	809522.75	2522047.15	547.64'	201+00.23	14.98' RT	PRWOLF
2	809538.28	2522086.24	546.92'	200+60.96	24.50' RT	PRWOLF
3	809545.89	2522099.01	546.56'	200+48.34	30.91' RT	PRWOLF
4	809556.40	2522109.51	546.20'	200+37.40	40.65' RT	PRWOLF
5	809569.16	2522117.11	545.84'	124+68.97	29.29' LT	PRAND
6	809583.40	2522121.33	545.51'	124+82.87	24.29' LT	PRAND
7	809528.26	2522088.96	547.65'	124+28.32	60.00' LT	PRAND
8	809528.74	2522124.87	548.01'	124+28.42	24.00' LT	PRAND
9	809562.69	2522123.36	546.75'	124+52.28	24.00' LT	PRAND
10	809508.07	2522050.01	547.86'	201+00.23	0.00' LT	PRWOLF
11	809514.02	2522089.80	548.33'	200+59.99	0.00' LT	PRWOLF
12	809546.77	2522125.70	548.69'	200+23.98	0.00' LT	PRWOLF
13	809517.60	2522137.66	548.75'	200+11.99	0.00' RT	PRWOLF
14	809494.37	2522052.69	547.65'	201+00.23	13.96' LT	PRWOLF
15	809494.18	2522077.88	548.20'	123+97.61	73.29' LT	PRAND
16	809485.09	2522101.36	549.32'	123+86.94	60.56' LT	PRAND
17	809468.27	2522120.12	550.75'	123+68.89	33.18' LT	PRAND

18	809445.91	2522131.70	562.11'	123+45.80	23.52' LT	PRAND
19	809502.31	2522090.61	548.53'	124+04.67	60.00' LT	PRAND
20	809504.80	2522126.53	549.17'	124+04.57	24.00' LT	PRAND
21	809480.86	2522128.33	550.31'	123+80.71	24.00' LT	PRAND
22	809447.95	2522155.13	552.46'	123+45.80	0.00' LT	PRAND
23	809448.98	2522167.08	562.28'	123+45.80	12.00' RT	PRAND
24	809470.42	2522153.24	561.33'	123+68.35	0.00' LT	PRAND
25	809471.39	2522165.20	561.15'	123+68.35	12.00' RT	PRAND
26	809494.41	2522151.36	560.13'	123+92.42	0.00' LT	PRAND
27	809495.31	2522163.32	549.95'	123+92.42	12.00' RT	PRAND
28	809518.42	2522149.62	548.93'	124+16.49	0.00' LT	PRAND
29	809519.25	2522161.60	548.75'	124+16.49	12.00' RT	PRAND
30	809543.44	2522148.03	547.75'	124+40.57	0.00' LT	PRAND
31	809543.20	2522160.01	547.57'	124+40.57	12.00' RT	PRAND
32	809566.47	2522146.59	546.65'	124+64.64	0.00' LT	PRAND
33	809567.16	2522158.57	546.47'	124+64.64	12.00' RT	PRAND
34	809584.68	2522145.59	545.87'	124+82.87	0.00' LT	PRAND
35	809585.31	2522167.57	545.69'	124+82.87	12.00' RT	PRAND



USER NAME = Ppop00836	DESIGNED - MH	REVISED -
DRAWN - DJP	REVISED -	
PLT SCALE = 28.0000' / 1"	CHECKED - MH	REVISED -
PLT DATE = 12/23/2008	DATE -	REVISED -

**STATE OF ILLINOIS  
DEPARTMENT OF TRANSPORTATION**

**INTERSECTION DETAIL - ANDREWS DR. & WOLF INDUSTRIAL DR.**

SCALE: 50	SHEET NO. OF SHEETS	STA. TO STA.
-----------	---------------------	--------------

F.A. RTE.	SECTION	COUNTY	TOTAL SHEETS	SHEET NO.
	99-00036-00-BR	BOND	99	28
CONTRACT NO. 97366				
FED. ROAD DIST. NO. ILLINOIS FED. AID PROJECT				