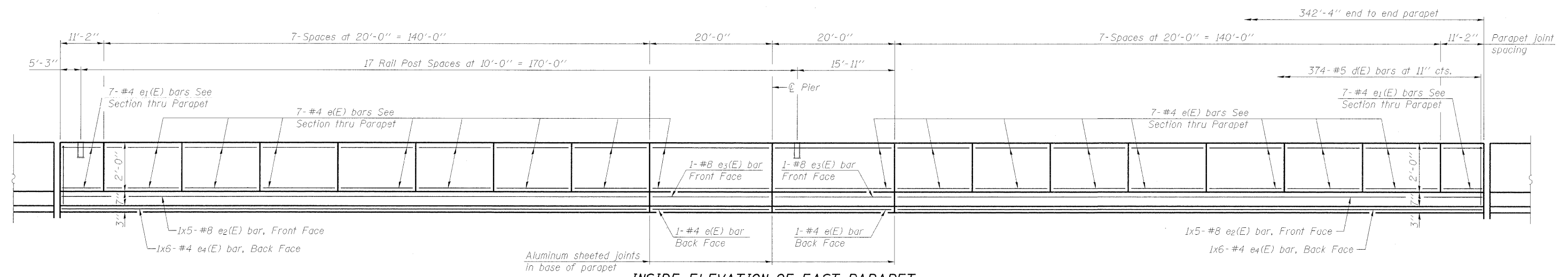


INSIDE ELEVATION OF WEST PARAPET

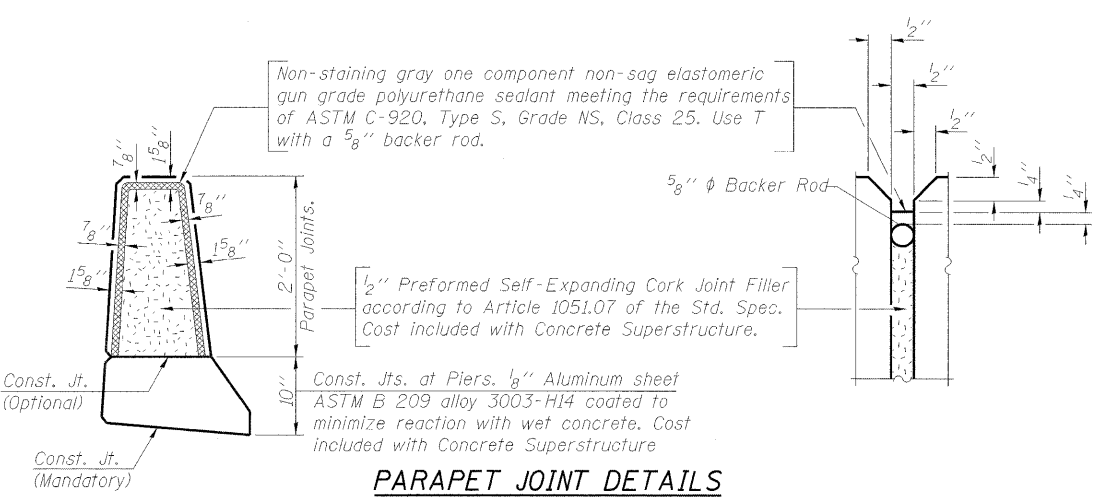


INSIDE ELEVATION OF EAST PARAPET

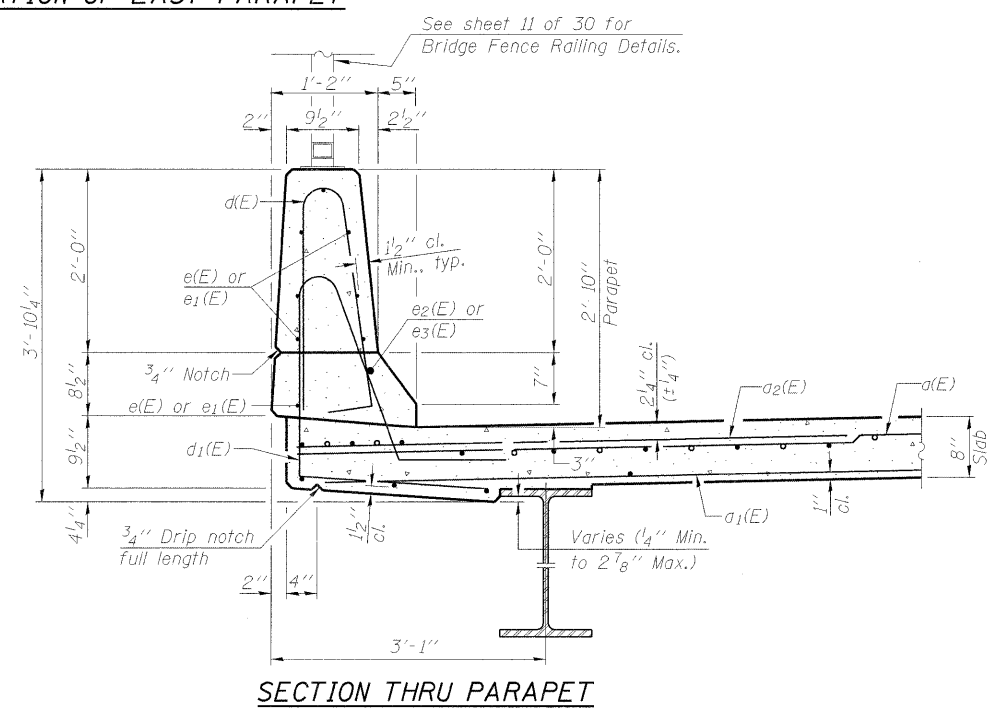
MINIMUM BAR LAP

(Parapet)
 #4 bar = 1'-8"
 #8 bar = 3'-5"

Notes:
 See Sheet 11 of 30 for Bridge Fence Railing Details.
 Space Reinforcement to miss railing anchor bolts.
 Bars indicated thus 1x5-#8 etc. indicates 1 line of bars with 5 lengths per line.
 See Sheet 10 of 30 for Superstructure Details and Bill of Material.



PARAPET JOINT DETAILS



SECTION THRU PARAPET

SUPERSTRUCTURE DETAILS (SHEET 1)
 ANDREWS DRIVE over
 U.S. ROUTE 40 ; CSX RR and IL. WESTERN RR
 SEC. 99-00036-00-BR
 STR. NO. 003-6000
 CITY OF GREENVILLE
 BOND COUNTY
 STATION 117+73.00
 PROFESSIONAL DESIGN FIRM LICENSE #184-001084
 © Copyright Hanson Professional Services Inc. 2008

HANSON
 Hanson Professional Services Inc.

JOB NO.
 04S2012
 DATE
 12/10/08

LAYOUT: MNW 05/07/08
 DRAWN: DAP 05/07/08
 REVIEWED: MNW 05/07/08