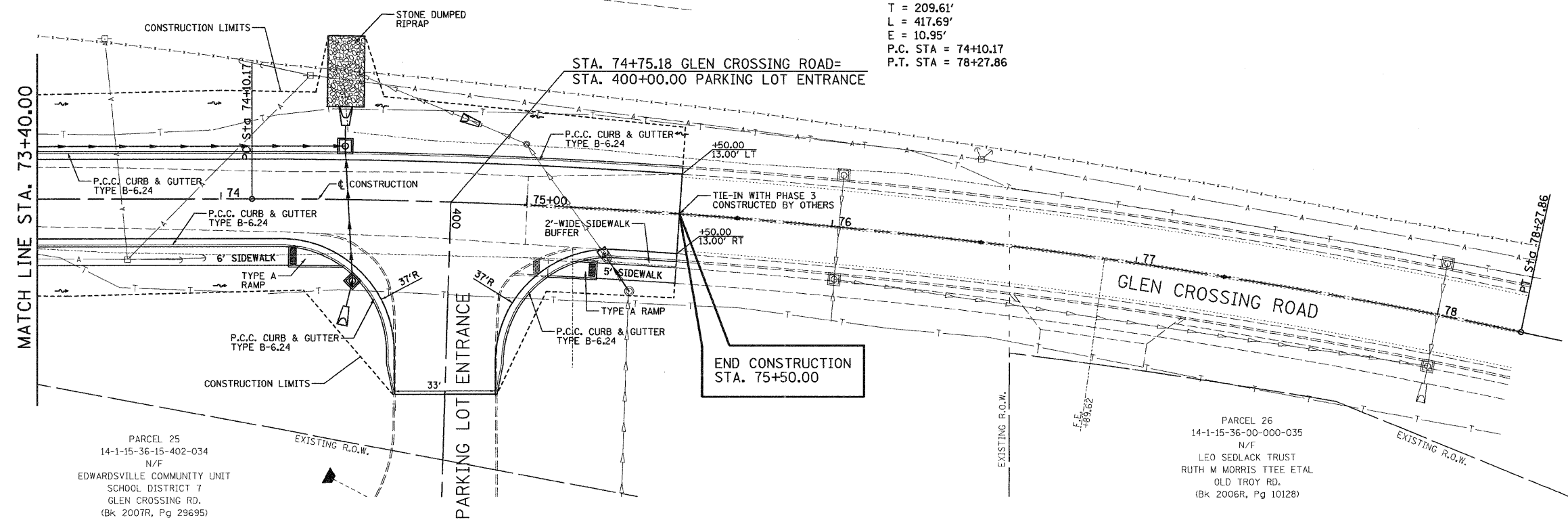


F.A.U. RTE.	SECTION	COUNTY	TOTAL SHEETS	SHEET NO.
8899-05-00026-01-RP		MADISON	81	27
FED. ROAD DIST. NO. ILLINOIS		FED. AID PROJECT		
CONTRACT NO. 97368				

PROP. CURVE GCR2-1
 PI STA. = 76+19.78
 $\Delta = 11^\circ 57' 58''$ (RT)
 $D = 2^\circ 51' 53''$
 $R = 2,000.00'$
 $T = 209.61'$
 $L = 417.69'$
 $E = 10.95'$
 P.C. STA = 74+10.17
 P.T. STA = 78+27.86

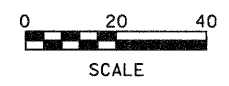


BY	DATE

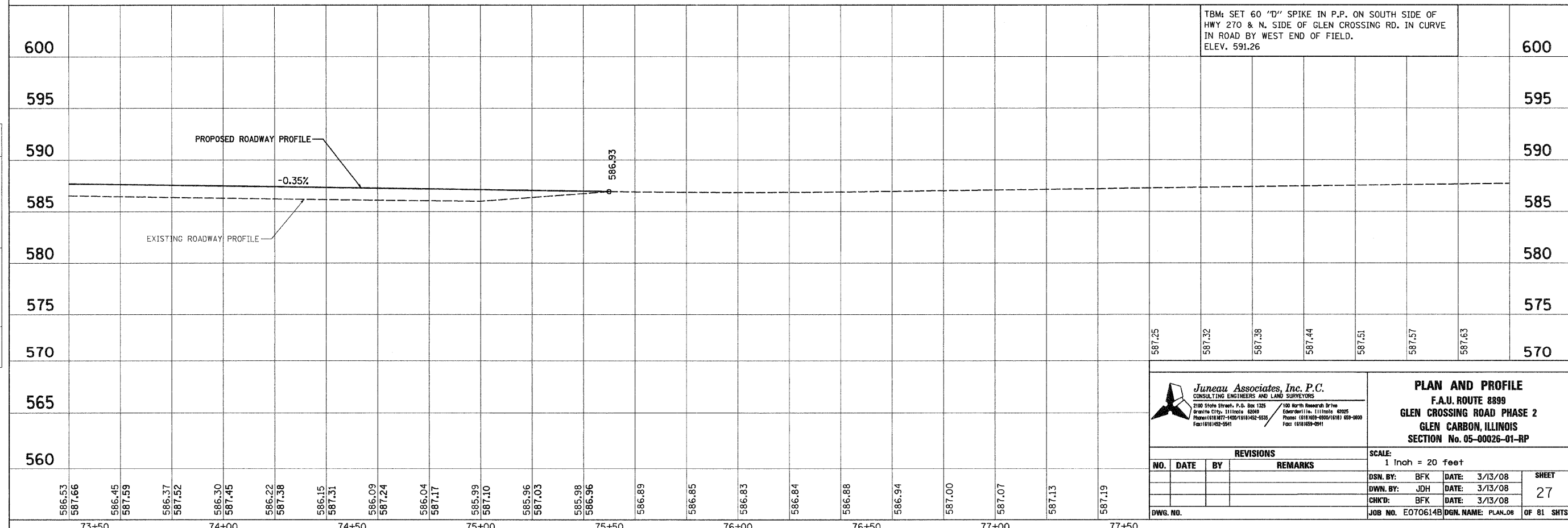


PARCEL 25
 14-1-15-36-15-402-034
 N/F
 EDWARDSVILLE COMMUNITY UNIT
 SCHOOL DISTRICT 7
 GLEN CROSSING RD.
 (Bk 2007R, Pg 29695)

PARCEL 26
 14-1-15-36-00-000-035
 N/F
 LEO SEDLACK TRUST
 RUTH M MORRIS TTEE ETAL
 OLD TROY RD.
 (Bk 2006R, Pg 10128)



BY	DATE



<p>Juneau Associates, Inc. P.C. CONSULTING ENGINEERS AND LAND SURVEYORS 2100 Stone Street, P.O. Box 1325 / 100 North Research Drive Granite City, Illinois 62040 / Edwardsville, Illinois 62025 Phone: (618) 497-1400 / (618) 492-9535 / Fax: (618) 492-9541 Phone: (618) 969-6900 / (618) 609-0000 / Fax: (618) 969-0941</p>		<p>PLAN AND PROFILE F.A.U. ROUTE 8899 GLEN CROSSING ROAD PHASE 2 GLEN CARBON, ILLINOIS SECTION No. 05-00026-01-RP</p>	
<p>NO. DATE BY REMARKS</p>		<p>SCALE: 1 Inch = 20 feet</p>	
<p>NO. DATE BY REMARKS</p>		<p>DSN. BY: BFK DATE: 3/13/08 SHEET</p>	
<p>CHK'D: BFK DATE: 3/13/08</p>		<p>27</p>	
<p>DWG. NO.</p>		<p>JOB NO. E0706148 DGN. NAME: PLAN_08 OF 81 SHTS</p>	