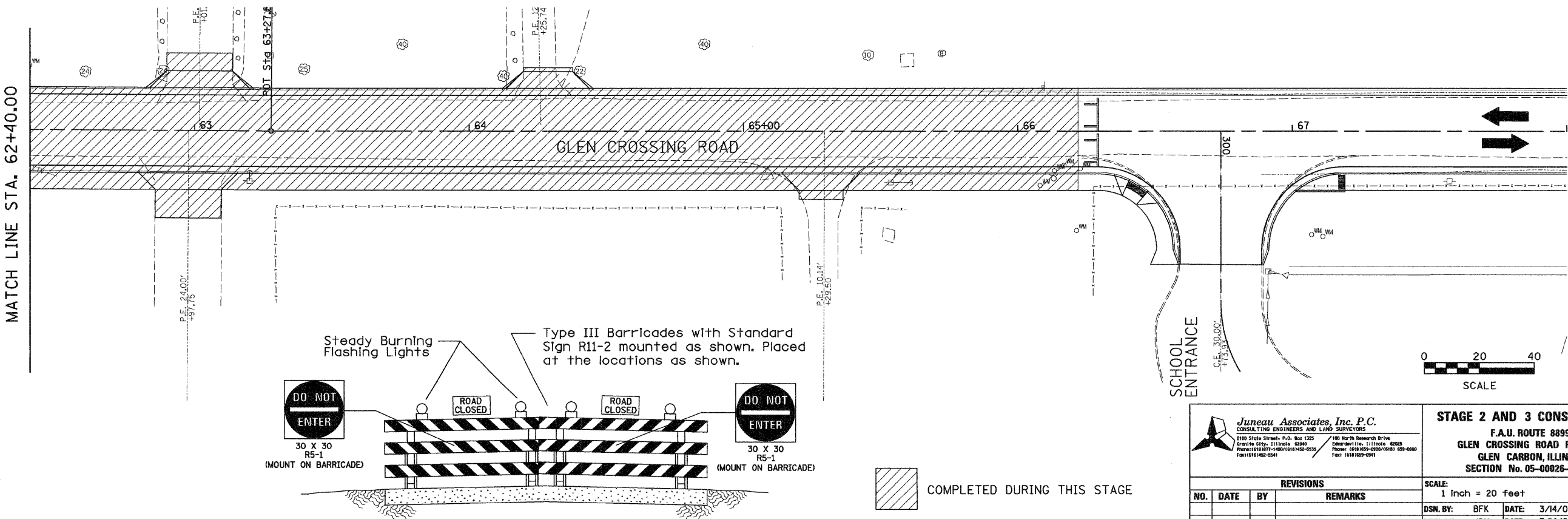
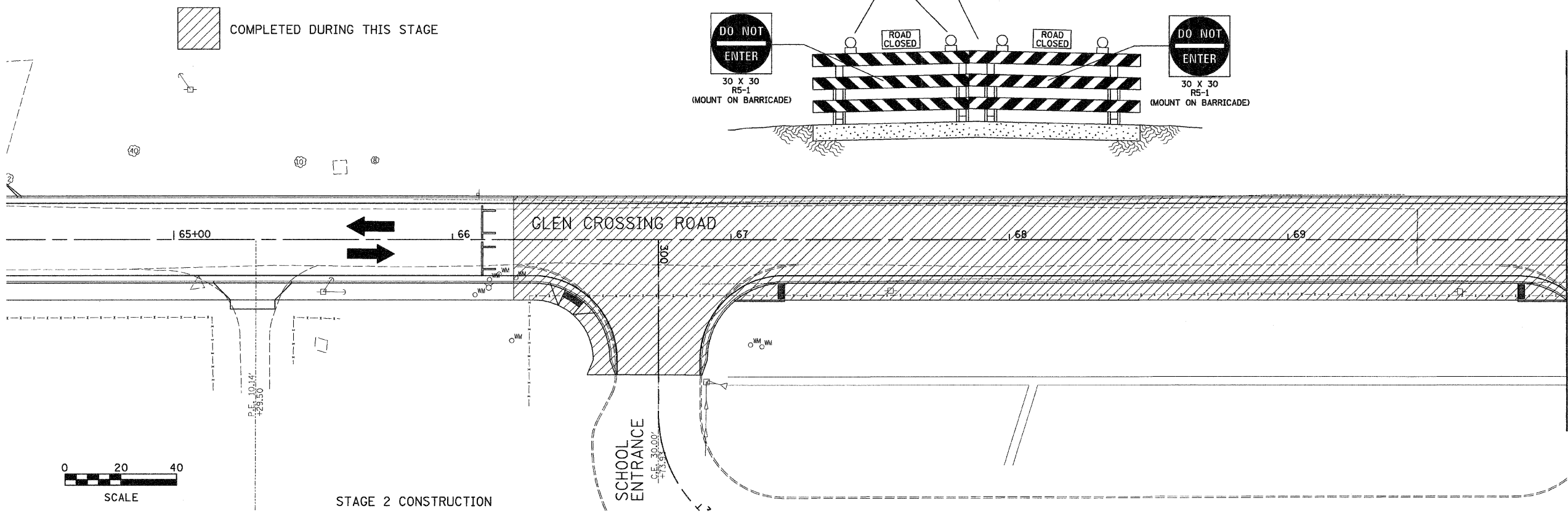


F.A.U. RTE.	SECTION	COUNTY	TOTAL SHEETS	SHEET NO.
8899	05-00026-01-RP	MADISON	81	30
FED. ROAD DIST. NO.	ILLINOIS	FED. AID PROJECT		
CONTRACT NO. 87388				

BY	DATE
SURVEYED	
PLOTTED	
NOTE BOOK TEMPLATE	
AREAS CHECKED	
NO.	

BY	DATE
ORIGINAL SURVEYED	
PLOTTED	
NOTE BOOK TEMPLATE	
AREAS CHECKED	
NO.	



**Juneau Associates, Inc. P.C.**  
 CONSULTING ENGINEERS AND LAND SURVEYORS  
 2100 State Street, P.O. Box 1325  
 Grandville, MI 49423-1325  
 Phone: (616) 859-0200 / (616) 859-0800  
 Fax: (616) 859-0801

**STAGE 2 AND 3 CONSTRUCTION**  
 F.A.U. ROUTE 8899  
 GLEN CROSSING ROAD PHASE 2  
 GLEN CARBON, ILLINOIS  
 SECTION No. 05-00026-01-RP

REVISIONS			
NO.	DATE	BY	REMARKS

SCALE: 1 Inch = 20 feet	
DSN. BY: BFK	DATE: 3/14/08
DWN. BY: JDH	DATE: 3/14/08
CHKD: BFK	DATE: 3/14/08
JOB NO. E070614B	DN. NAME STAGE 2 AND 3 OF 81 SHTS

