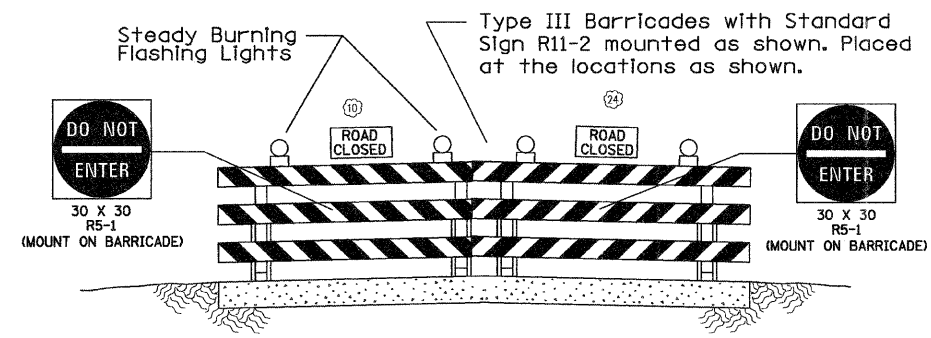
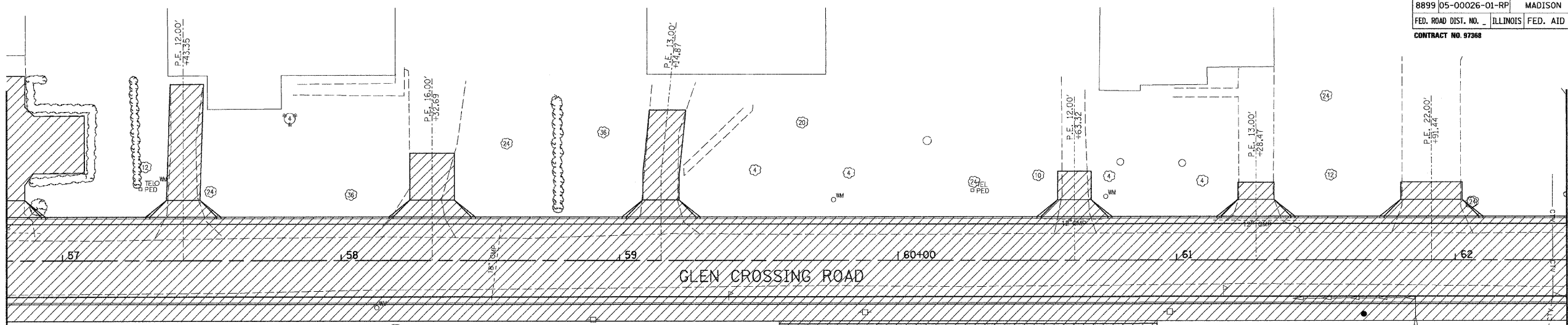


F.A.U. RTE.	SECTION	COUNTY	TOTAL SHEETS	SHEET NO.
8899 05-00026-01-RP		MADISON	81	31
FED. ROAD DIST. NO.	ILLINOIS		FED. AID PROJECT	
CONTRACT NO. 97368				

MATCH LINE STA. 56+80.00

MATCH LINE STA. 62+40.00



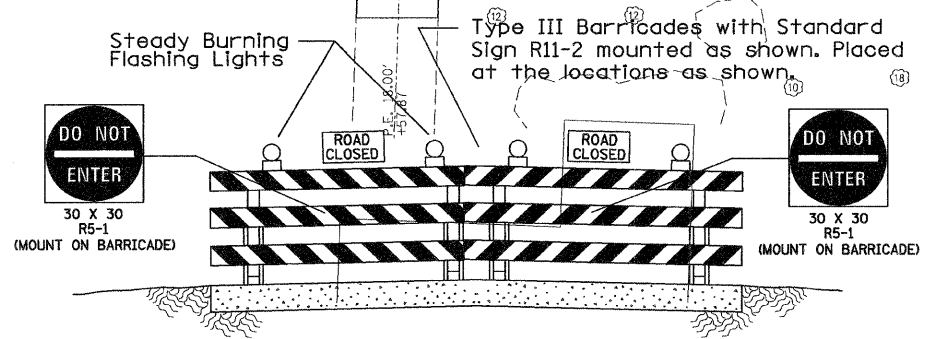
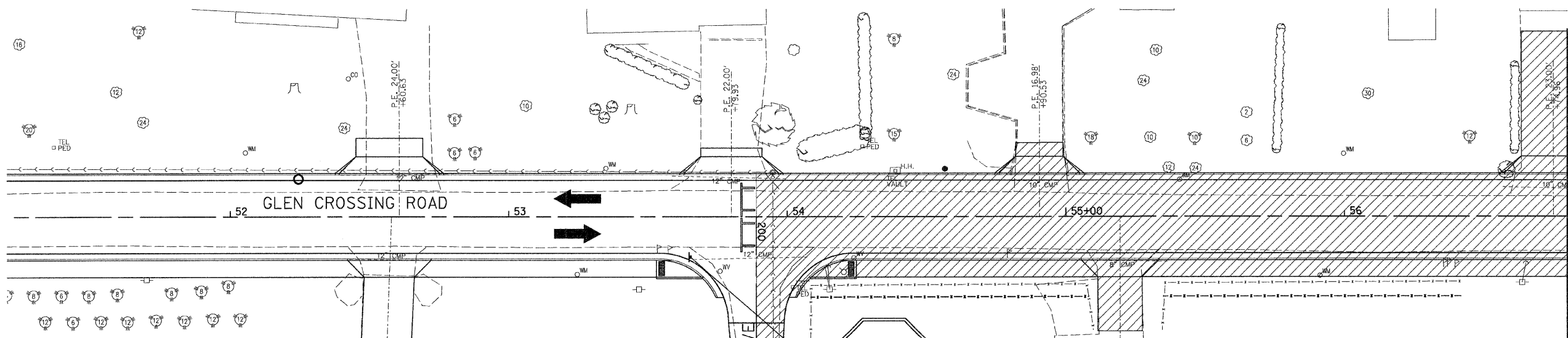
COMPLETED DURING THIS STAGE

SCALE 0 20 40

STAGE 3 CONSTRUCTION

FINAL SURVEYED	DATE
SURVEY PLOTTED	
NOTE BOOK TEMPLATE	
AREAS CHECKED	
NO.	

ORIGINAL SURVEYED	DATE
SURVEY PLOTTED	
NOTE BOOK TEMPLATE	
AREAS CHECKED	
NO.	



COMPLETED DURING THIS STAGE

SCALE 0 20 40

STAGE 3 CONSTRUCTION

Juneau Associates, Inc. P.C.
CONSULTING ENGINEERS AND LAND SURVEYORS
2500 State Street, P.O. Box 1385
Orlando, FL 32816-1385
Phone: (407) 851-1400 / (407) 851-1402 / (407) 851-1404
Fax: (407) 851-1405

STAGE 3 CONSTRUCTION
F.A.U. ROUTE 8899
GLEN CROSSING ROAD PHASE 2
GLEN CARBON, ILLINOIS
SECTION No. 05-00026-01-RP

REVISIONS			
NO.	DATE	BY	REMARKS

SCALE: 1 Inch = 20 feet	
DSN. BY: BFK	DATE: 3/14/08
DWN. BY: JDH	DATE: 3/14/08
CHK'D: BFK	DATE: 3/14/08
JOB NO. E070614B	DGN. NAME: STAGECONSTS OF 81 SHTS