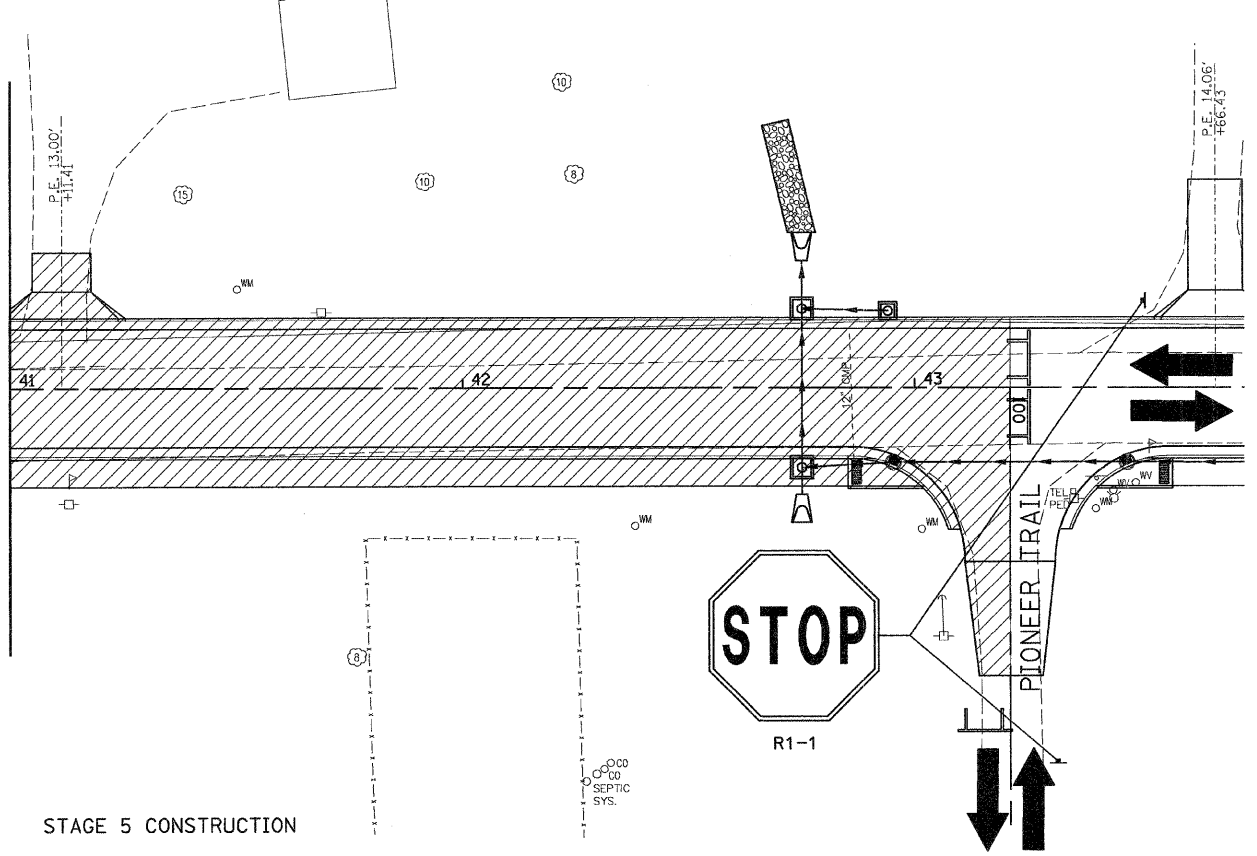


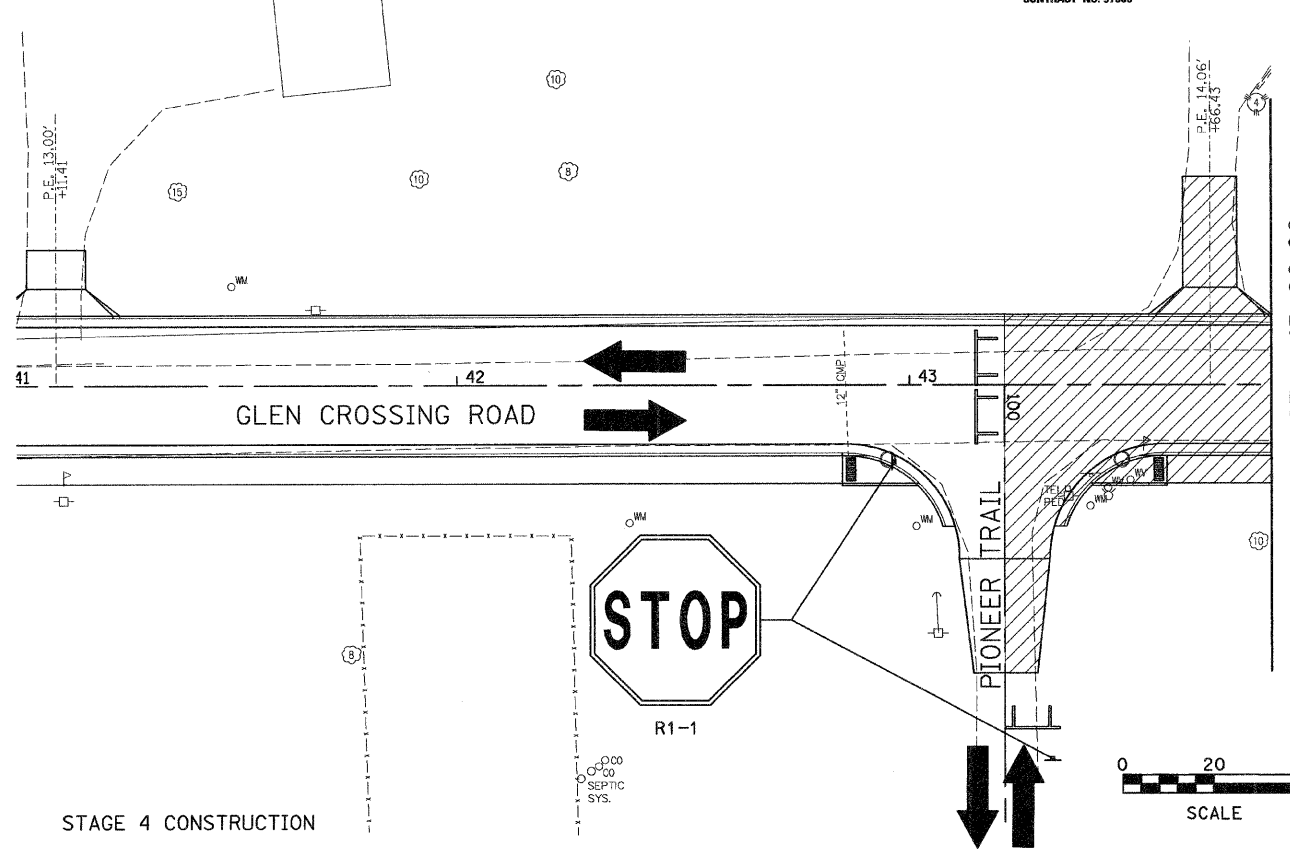
F.A.U. RTE.	SECTION	COUNTY	TOTAL SHEETS	SHEET NO.
8899 05-00026-01-RP	MADISON	ILLINOIS	81	33
FED. ROAD DIST. NO. 6		FED. AID PROJECT		
CONTRACT NO. 97368				

BY	DATE
FINAL SURVEYED	
SURVEY PLOTTED	
NOTE BOOK TEMPLATE	
AREAS CHECKED	
NO.	

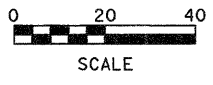
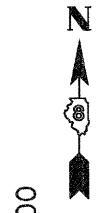
MATCH LINE STA. 41+00.00



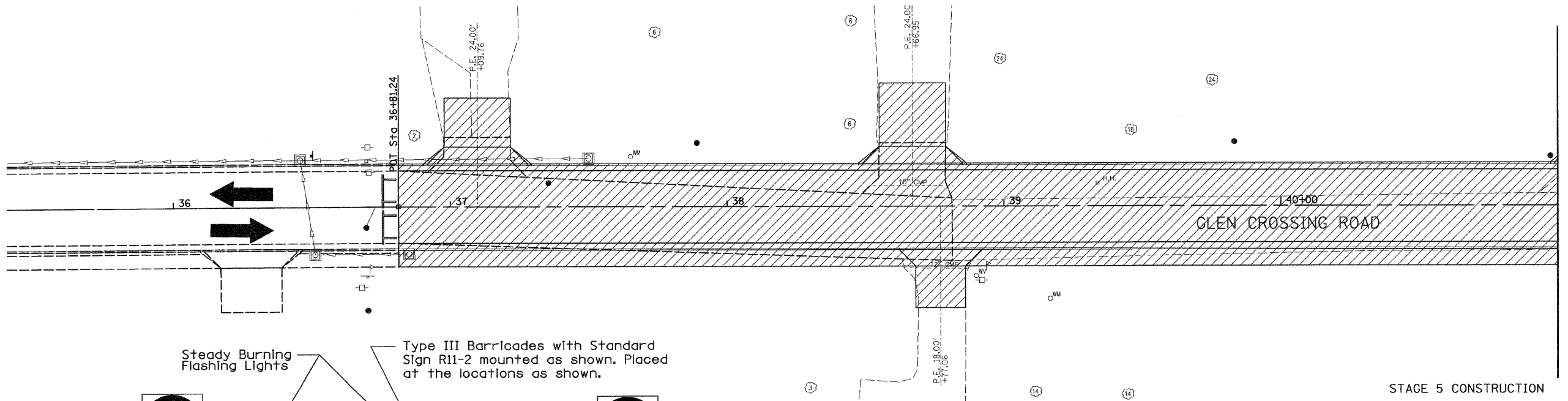
STAGE 5 CONSTRUCTION



STAGE 4 CONSTRUCTION

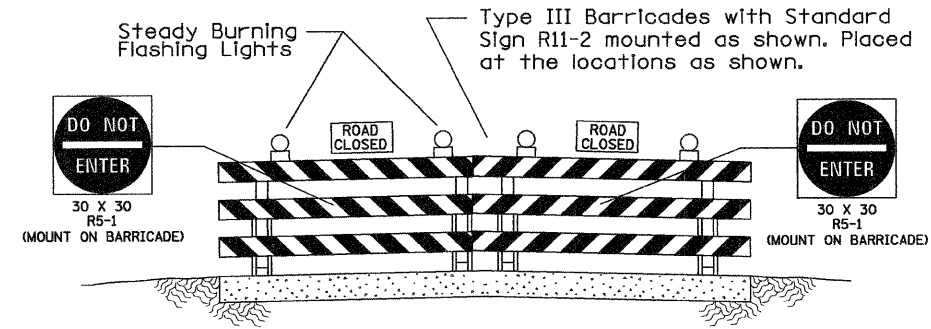


BY	DATE
ORIGINAL SURVEYED	
SURVEY PLOTTED	
NOTE BOOK TEMPLATE	
AREAS CHECKED	
NO.	

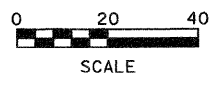


STAGE 5 CONSTRUCTION

MATCH LINE STA. 41+00.00



COMPLETED DURING THIS STAGE



Juneau Associates, Inc. P.C.
 CONSULTING ENGINEERS AND LAND SURVEYORS
 2100 State Street, P.O. Box 1325
 Granite City, Illinois 62040
 Phone: (618) 387-1400 / (618) 452-0335
 Fax: (618) 452-0341

REVISIONS			
NO.	DATE	BY	REMARKS

STAGE 4 AND 5 CONSTRUCTION			
F.A.U. ROUTE 8899			
GLEN CROSSING ROAD PHASE 2			
GLEN CARBON, ILLINOIS			
SECTION No. 05-00026-01-RP			
SCALE:		1 Inch = 20 feet	
DSN. BY:	BFK	DATE:	3/14/08
DWN. BY:	JDH	DATE:	3/14/08
CHK'D:	BFK	DATE:	3/14/08
DWG. NO.	E070614B	DGN. NAME:	STAGECONT45
		OF 81 SHTS	