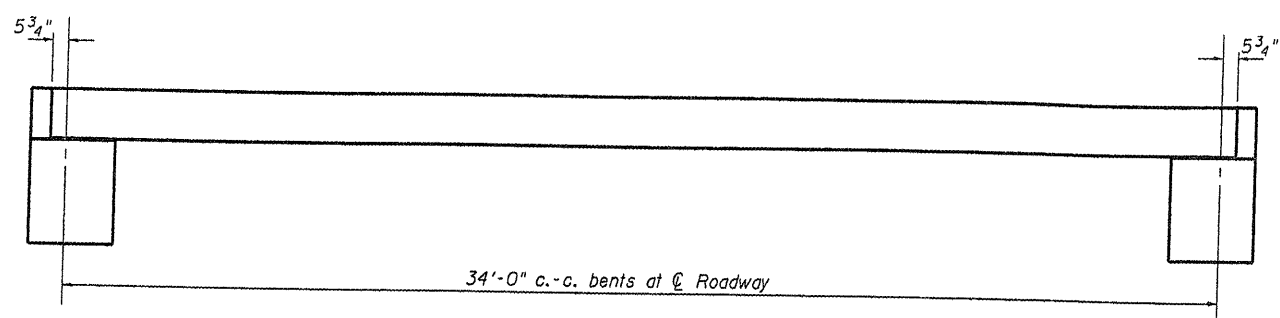
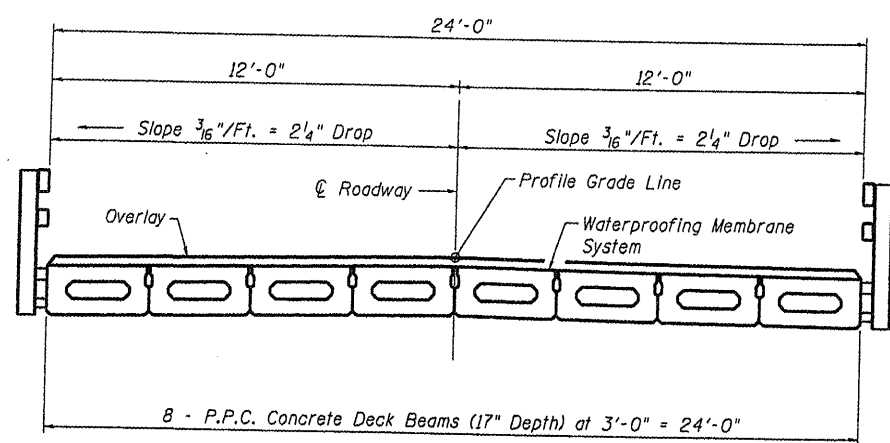


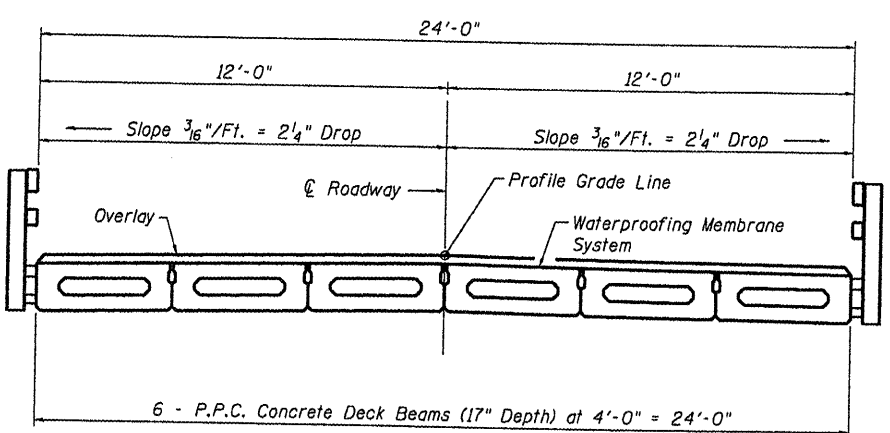
FILENAME: L:\Jobs\11001 BBS\6956 BBS Various\Various\6956.05.CADD.Struc\Jackson 05-16118-00-BR.dgn



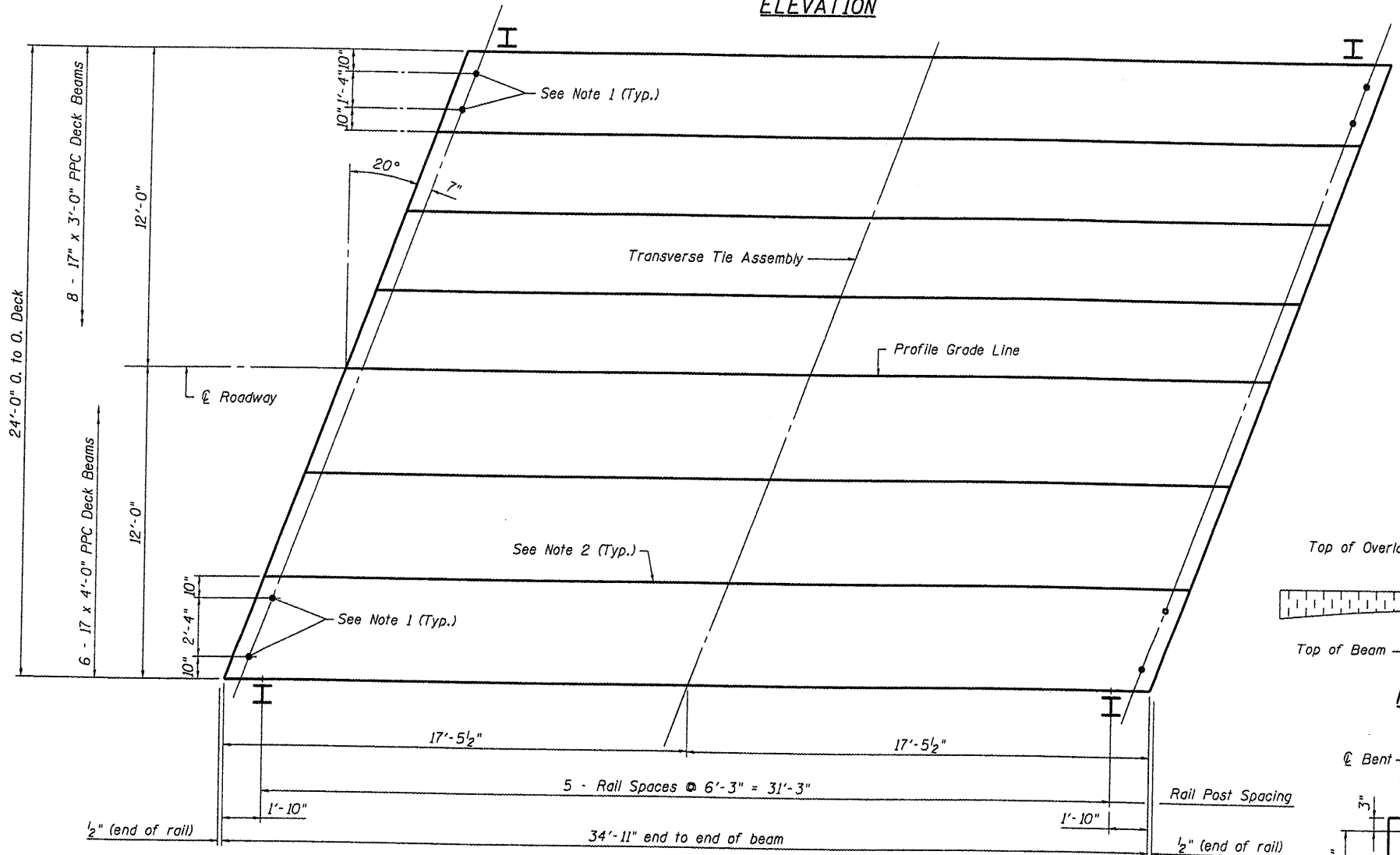
ELEVATION



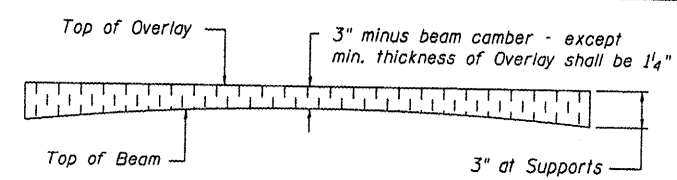
CROSS SECTION



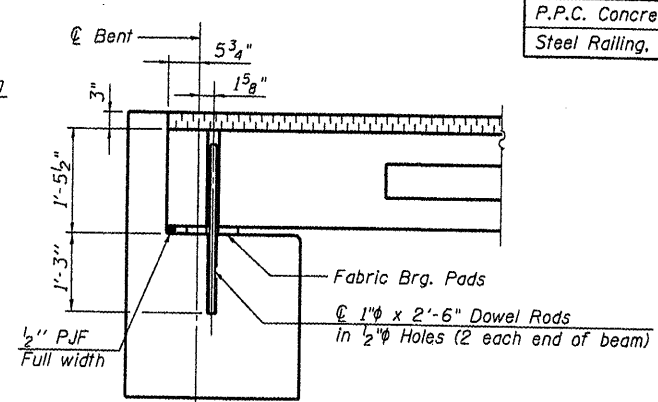
CROSS SECTION



PLAN



PROFILE OF OVERLAY



SECTION AT ABUTMENTS
(Along ϕ Beams)

QUANTITIES FOR ONE SPAN

P.P.C. Concrete Deck Beams (17" Depth)	840 Sq. Ft.
Steel Railing, Type S1	70 Ft.

NOTES

- After beams have been erected, holes shall be drilled into substructure and anchor dowels placed. Dowel holes shall be filled with non-shrink grout to top of beam and allowed to cure min. 24 hrs. prior to grouting the shear keys.
- Longitudinal keys shall be grouted.

USER NAME = dhaberling	DESIGNED - SDS	REVISED
	DRAWN - DLH	REVISED
PLOT SCALE = 0.21119' / IN.	CHECKED - CWC	REVISED
PLOT DATE = 9/8/2008	DATE -	REVISED

WHKS & CO.
ENGINEERING

7018 KINGSMILL CT.,
SPRINGFIELD, IL
(217) 483-9457
DESIGN FIRM #184001036

STATE OF ILLINOIS
DEPARTMENT OF TRANSPORTATION

SUPERSTRUCTURE DETAILS
TWP. ROUTE 75 OVER GLENN CREEK

SCALE: SHEET NO. 5 OF 13 SHEETS ϕ STA. 3+00

T.R. RTE.	SECTION	COUNTY	TOTAL SHEETS	SHEET NO.
75	05-16118-00-BR	JACKSON	13	5
S.N. -	CONTRACT		99342	
FED. ROAD DIST. NO. - ILLINOIS FED. AID PROJECT				