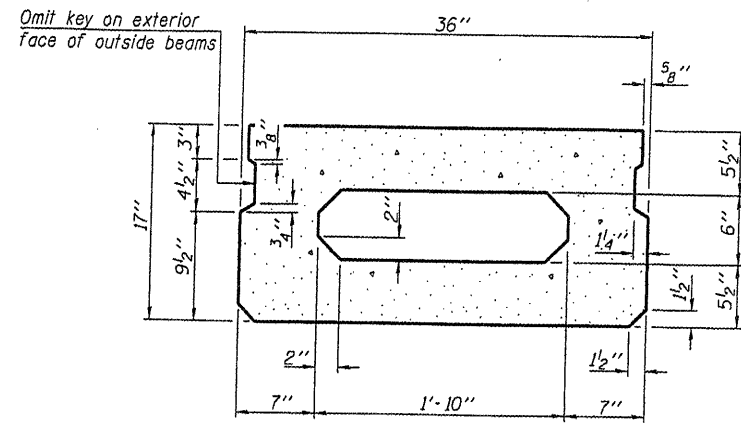
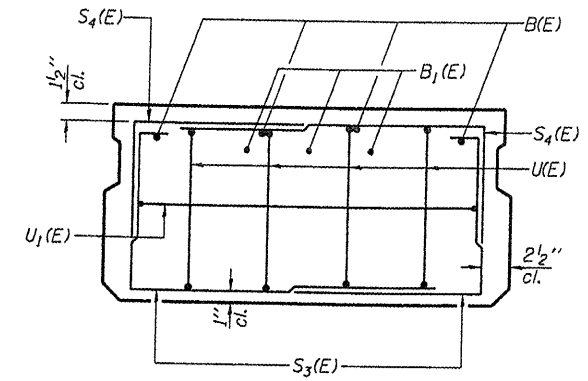


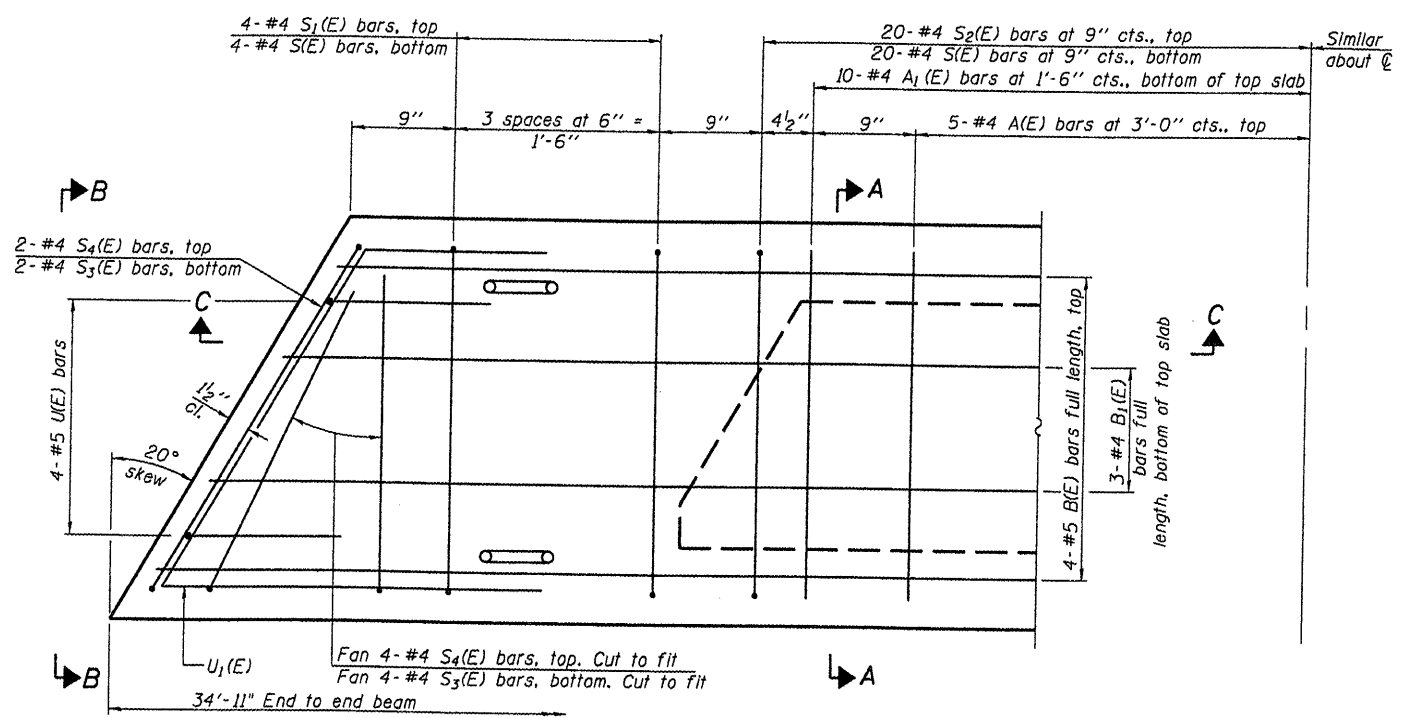
SECTION C-C



SECTION A-A  
(Showing dimensions)

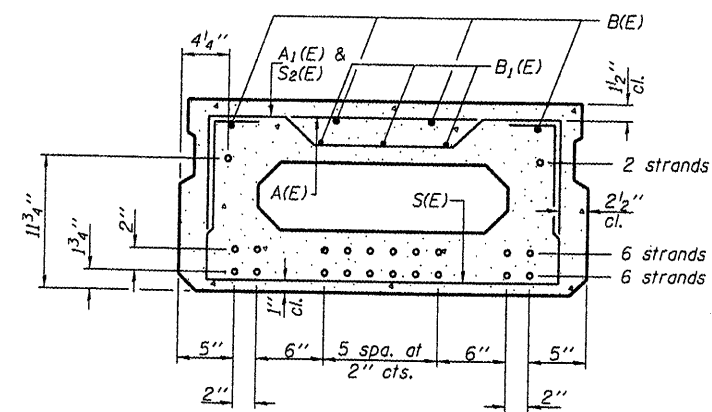


VIEW B-B



PLAN VIEW

Note: Spacing of S(E) and S2(E) bars may be adjusted up to 4" in the immediate area of the transverse tie diaphragms to miss the block outs for the transverse ties.



SECTION A-A  
(Showing reinforcement and permissible strand locations)

Note: Place the number of strands specified in each row symmetrically about the centerline of beam in the permissible strand locations shown.

BAR LIST  
ONE BEAM ONLY  
(For information only)

Bar	No.	Size	Length	Shape
A(E)	10	#4	2'-7"	—
A1(E)	20	#4	2'-11"	—
B(E)	4	#5	34'-8"	—
B1(E)	3	#4	34'-8"	—
S(E)	48	#4	5'-9"	U
S1(E)	8	#4	4'-3"	U
S2(E)	40	#4	4'-6"	U
S3(E)	12	#4	3'-7"	U
S4(E)	12	#4	2'-10"	U
U(E)	8	#5	3'-8"	U
U1(E)	2	#4	6'-1"	U

FILENAME: L:\Jobs\DOT BBS\6956 BBS Various\6956-05\CADD\Struct\Jackson 05-16118-00-BR.dgn

USER NAME = dhaberling	DESIGNED - SDS	REVISED
	DRAWN - DLH	REVISED
PLOT SCALE = 0.21119 1/4" IN.	CHECKED - CWC	REVISED
PLOT DATE = 9/8/2008	DATE = 10/08	REVISED

**WHKS & CO.**  
ENGINEERING  
7018 KINGSMILL CT.,  
SPRINGFIELD, IL  
(217) 483-9457  
DESIGN FIRM #184001036

STATE OF ILLINOIS  
DEPARTMENT OF TRANSPORTATION

PPC DECK BEAM DETAILS (17" x 3'-0")  
TWP. ROUTE 75 OVER GLENN CREEK  
SCALE: SHEET NO. 6 OF 13 SHEETS      STA. 3+00

T.R. RTE.	SECTION	COUNTY	TOTAL SHEETS	SHEET NO.
75	05-16118-00-BR	JACKSON	13	6
S.N.	CONTRACT 99342			
FED. ROAD DIST. NO. ILLINOIS FED. AID PROJECT				