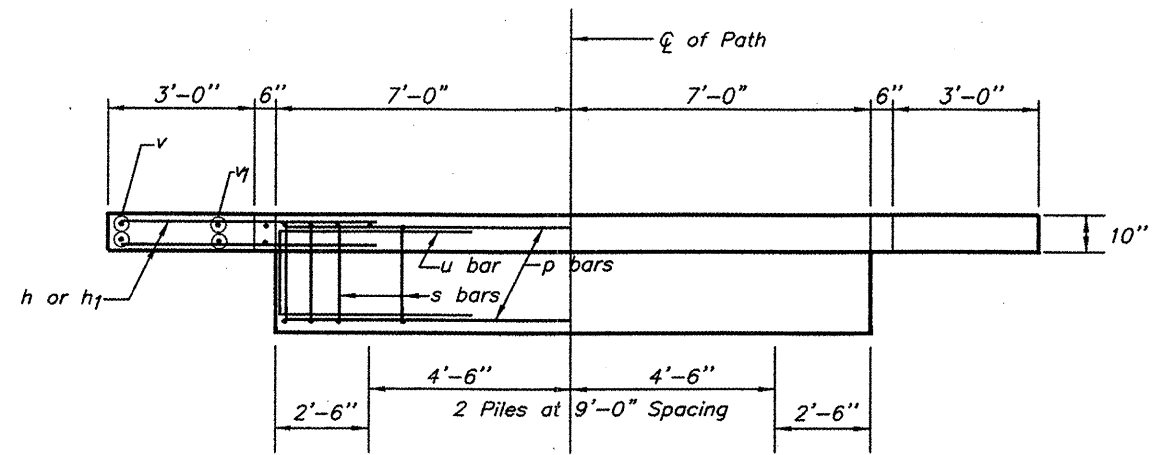
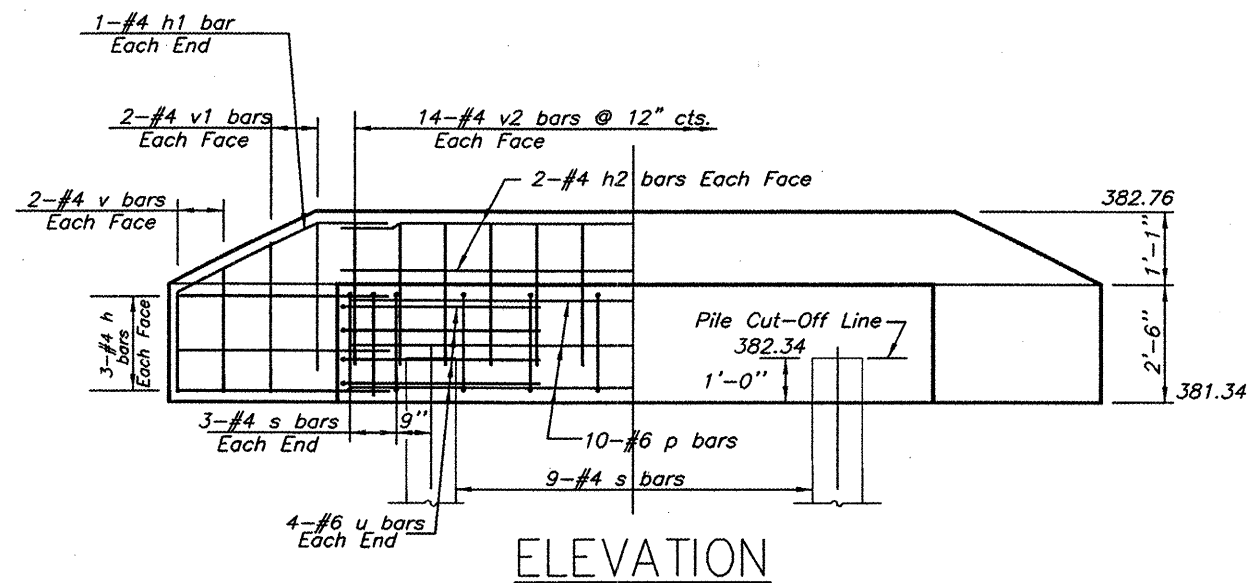


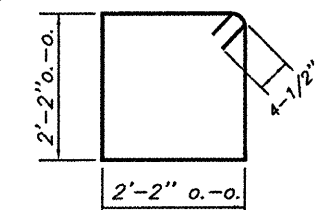
ROUTE	SECTION	COUNTY	TOTAL SHEETS	SHEET NO.
	08-00037-00-BT	SALINE	47	7
IDOT - ELDORADO BIKE PATH				
PROJ. NO. TCSP-IL08(012)			CONTRACT NO. XXXXX	



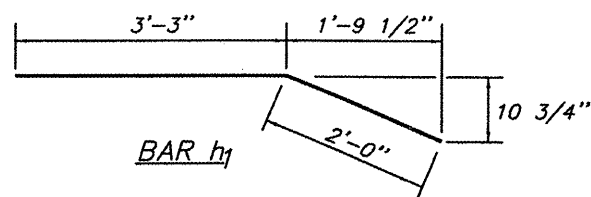
PLAN



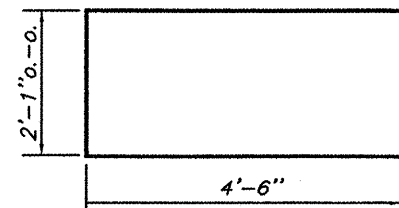
ELEVATION



BAR S



BAR h1



BAR u

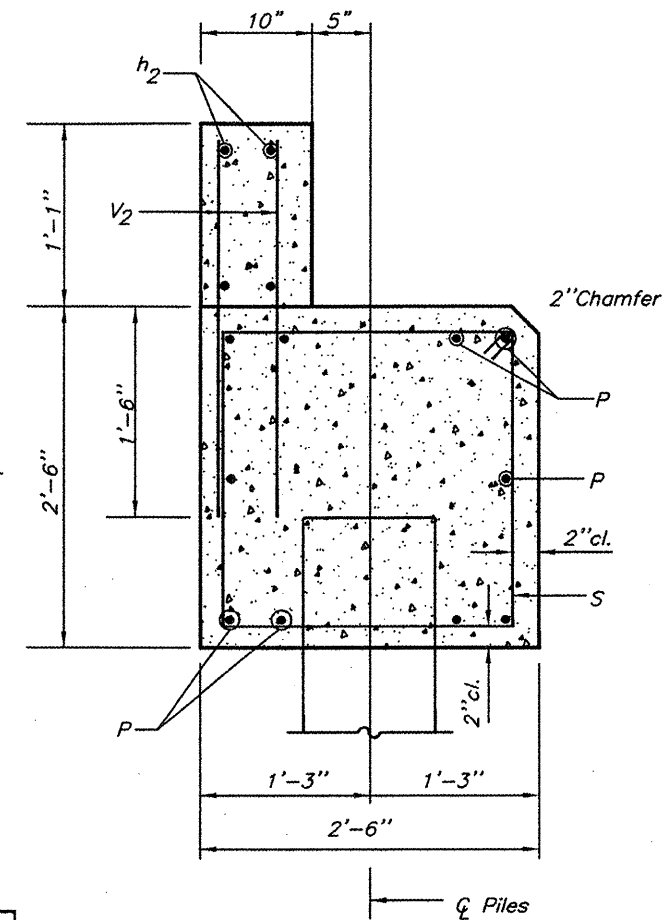
Dimension to be verified with Bridge Manufacturer

PILE DATA (2-ABUTMENTS)

Type: HP 10X42
Capacity: Refusal (84 tons)
Estimated Length: 35 Feet
Number Required: 4

BILL OF MATERIAL FOR ONE ABUTMENT

Bar	No.	Size	Length	Shape
h	12	4	5'-0"	—
h1	4	4	5'-3"	—
h2	4	4	13'-8"	—
p	10	6	13'-8"	—
s	15	4	9'-5"	□
u	8	6	11'-1"	□
v	8	4	2'-6"	—
v1	8	4	2'-9"	—
v2	28	4	2'-5"	—
Concrete Structures		4.4	Cu. Yds.	
Reinforcement Bars		600	Lbs.	



SECTION THRU ABUTMENT
LICENSED STRUCTURAL ENGINEER
ZEYIN UZMAN
4745
STATE OF ILLINOIS
Expires 11/30/2008 Illinois Structural No. 4745

ABUTMENT DETAIL SHEET
PEDESTRIAN BRIDGE
OVER UNNAMED CREEK

SECTION 08-00037-00-BT
CITY OF ELDORADO
STATION 287+29