

ROUTE NO.	SECTION	COUNTY	TOTAL SHEETS	SHEET NO.
T.R. 98	06-04109-00-BR	GALLATIN	17	1
ILLINOIS CONTRACT NO. 99353				

STATE OF ILLINOIS  
DEPARTMENT OF TRANSPORTATION  
DIVISION OF HIGHWAYS

# PLANS FOR PROPOSED HIGHWAY BRIDGE PROGRAM

PROJECT BROS-059(18)  
SECTION 06-04109-00-BR  
EQUALITY ROAD DISTRICT  
GALLATIN COUNTY  
ST. JOSEPH CEMETERY ROAD / T.R. 98  
PROPOSED STRUCTURE NO. 030-3126  
C-99-523-07

**INDEX OF SHEETS**

SHEET NO.	DESCRIPTION
1.	COVER SHEET
2.	SUMMARY OF QUANTITIES AND TYPICAL SECTIONS
3.	PLAN AND PROFILE
4.-8.	STATION CROSS SECTIONS
9.-16.	BRIDGE PLANS
17.	BORINGS

HIGHWAY STANDARDS:

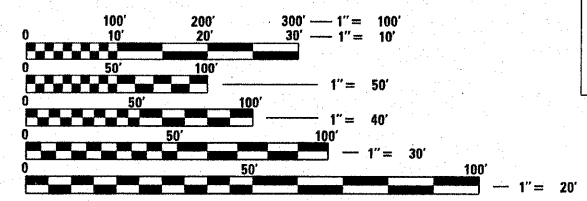
515001-03	NAME PLATE FOR BRIDGES
630001-08	STEEL PLATE BEAM GUARDRAIL
701901-01	TRAFFIC CONTROL DEVICES
BLR 21-8	TYPICAL APPLICATION OF TRAFFIC CONTROL DEVICES FOR CONSTRUCTION ON RURAL LOCAL HIGHWAYS

**UTILITIES**

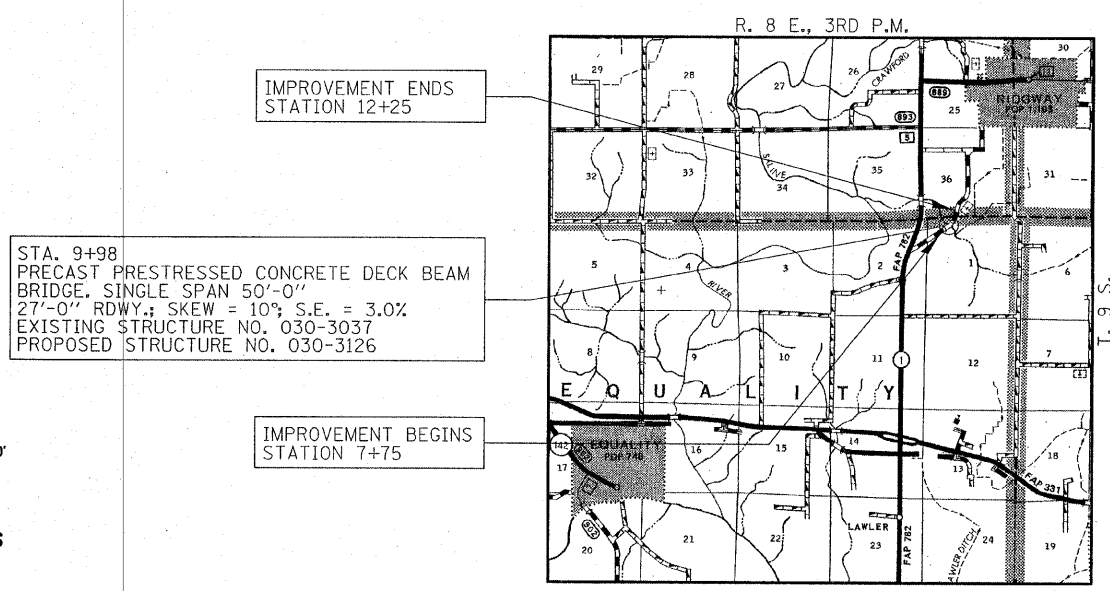
NONE



FUNCTIONAL CLASSIFICATION: LOCAL ROAD (0-250 ADT)  
DESIGN SPEED: 20 MPH  
DESIGN TRAFFIC: 75 ADT (2005)



FULL SIZE PLANS HAVE BEEN PREPARED USING STANDARD ENGINEERING SCALES. REDUCED SIZED PLANS WILL NOT CONFORM TO STANDARD SCALES. IN MAKING MEASUREMENTS ON REDUCED PLANS, THE ABOVE SCALES MAY BE USED.

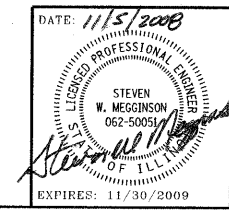


**LOCATION MAP**

APPROXIMATE SCALE: 0 1 MILE  
NET LENGTH OF SECTION = 450 FEET = 0.085 MILES



AGENCY RESPONSIBLE FOR LETTING	
APPROVED	11/6 20 08 <i>J. W. Brown</i> COUNTY ENGINEER
PASSED	12/8 20 08 <i>Denn. W. Hill</i> DISTRICT NINE ENGINEER OF LOCAL ROADS & STREETS
Releasing For Bid Based on Limited Review	12 20 08 <i>Mary C. Lane</i> DEPUTY DIRECTOR OF HIGHWAYS REGION FIVE ENGINEER STATE OF ILLINOIS DEPARTMENT OF TRANSPORTATION



**HAMPTON, LENZINI & RENWICK, INC.**  
CIVIL & STRUCTURAL ENGINEERS  
LAND SURVEYORS  
3085 STEVENSON DRIVE, SUITE 201  
SPRINGFIELD, ILLINOIS 62703  
(217) 546-3400  
ELGIN • SPRINGFIELD  
PROJECT NUMBER: 08.0190.130 DATE: 11/05/08

CONTRACT NO. 99353

GALLATIN COUNTY

SECTION 06-04109-00-BR