

CA008

REVISIONS		
NUMBER	BY	DATE

0 1 2
 THIS BAR IS EQUAL TO 2"
 AT FULL SCALE (34X22).



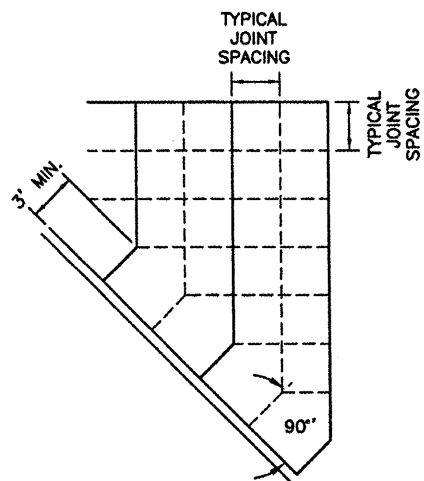
SPRINGFIELD AIRPORT AUTHORITY
 ABRAHAM LINCOLN CAPITAL AIRPORT
 SPRINGFIELD, ILLINOIS

RECONSTRUCT AND EXPAND THE SOUTHEAST RAMP
 PAVING & MISCELLANEOUS DETAILS

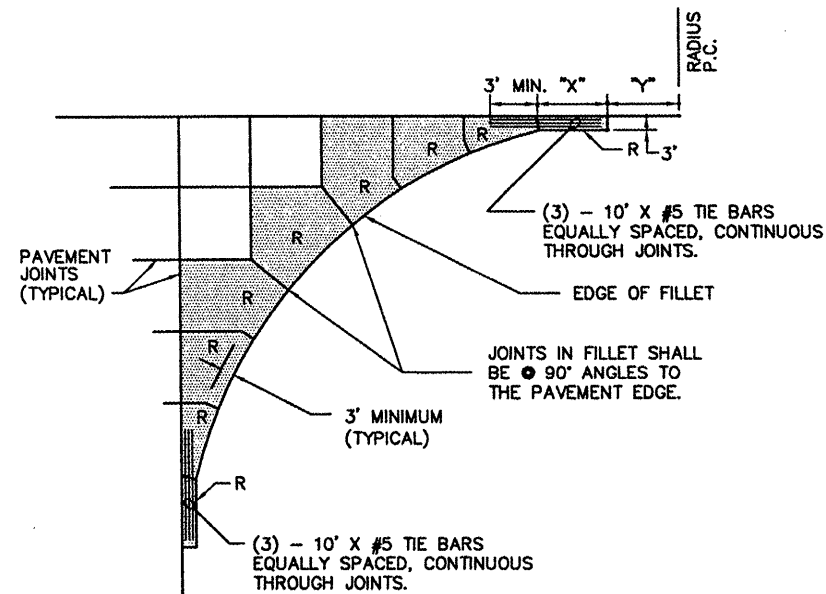
© Copyright, CMT, Inc.
CMT
 CRAWFORD, MURPHY & TILLY, INC.
 CONSULTING ENGINEERS
 License No. 04-000610



DESIGN BY:	RLV/KLB
DRAWN BY:	CMT
CHECKED BY:	RLV
APPROVED BY:	RLV
DATE:	JANUARY 27, 2009
JOB No:	08035-08
IL PROJ. NO.	SPI-3885
AIP PROJ. NO.	3-17-0096-XX
SHEET 18 OF 40 SHEETS	



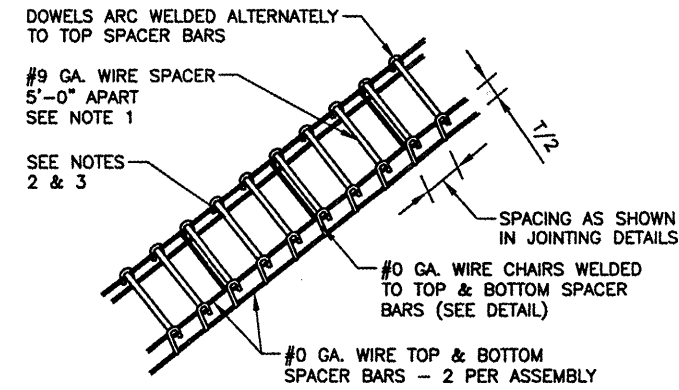
JOINTING AT SKEWED EDGE
 N.T.S.



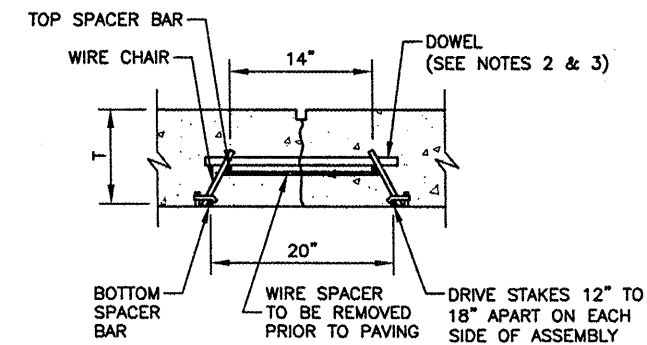
⊙ DENOTES ODD SHAPED REINFORCED PANELS TO BE REINFORCED WITH WELDED WIRE FABRIC AS SHOWN ON JOINTING DETAILS SHEET. ALL NON RECTANGULAR SHAPED PANELS SHALL BE REINFORCED. (REINFORCEMENT NOT SHOWN)

FILLET RADIUS	"X" (IN FEET)	"Y" (IN FEET)
20	4.30	6.24
25	4.88	7.00
30	5.40	7.68
50	7.11	9.95
75	8.79	12.21
85	9.38	13.00
100	10.21	14.11
125	11.44	15.78
150	12.56	17.29
175	13.58	18.68
200	14.53	19.98

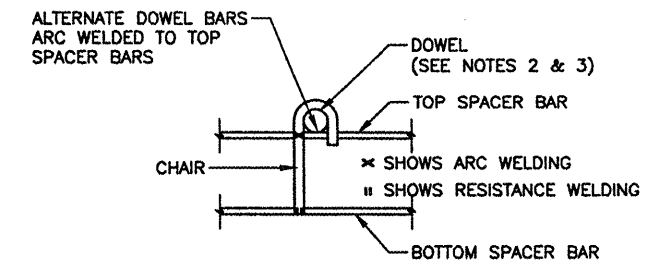
FILLET DETAIL & FILLET REINFORCING LAYOUT
 N.T.S.



DOWEL BASKET ASSEMBLY DETAIL



DOWEL BAR INSTALLATION DETAIL

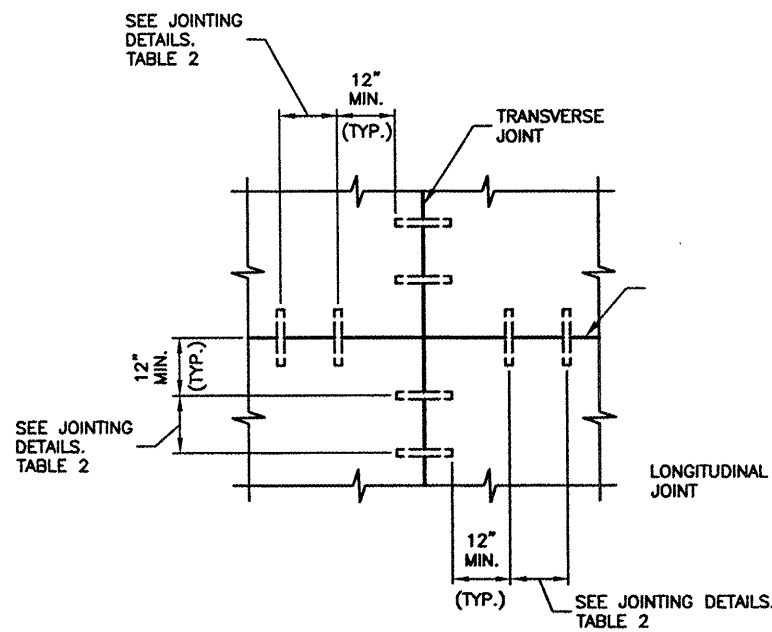


TYPICAL DOWEL BASKET ELEVATION
DETAIL SHOWING CHAIR

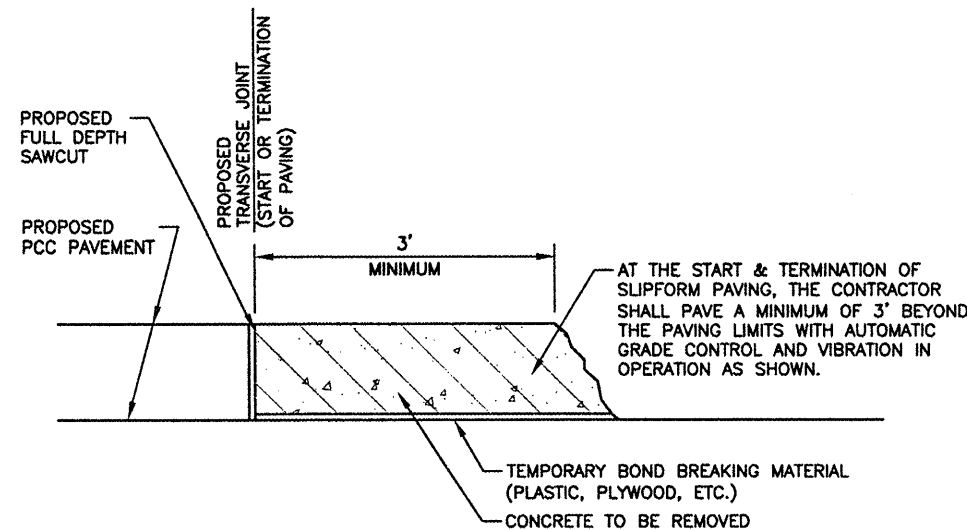
DOWEL BASKET DETAILS
 N.T.S.

DOWEL BASKET NOTES

- #9 GA. WIRE SPACER BAR ARC WELDED TO THE BOTTOM OF TOP SPACER BAR. (MAY BE MECHANICALLY ATTACHED IN LIEU OF WELDING) 3 REQUIRED PER UNIT. THIS WIRE MUST BE CUT OR REMOVED PRIOR TO PAVING.
- DOWEL BAR DIAMETER, LENGTH & SPACING SHALL BE AS SHOWN IN TABLE 2.
- DOWELS SHALL BE EPOXY COATED FULL LENGTH OF DOWEL. IMMEDIATELY PRIOR TO PAVING, THE FREE END OF EACH DOWEL SHALL BE LUBRICATED OR OILED, FOR HALF THE LENGTH OF THE DOWEL.



DOWEL PLACEMENT DETAIL
 N.T.S.



REQUIREMENTS AT START & TERMINATION OF SLIPFORM PAVING
 N.T.S.