

**CA008**

REVISIONS		
NUMBER	BY	DATE

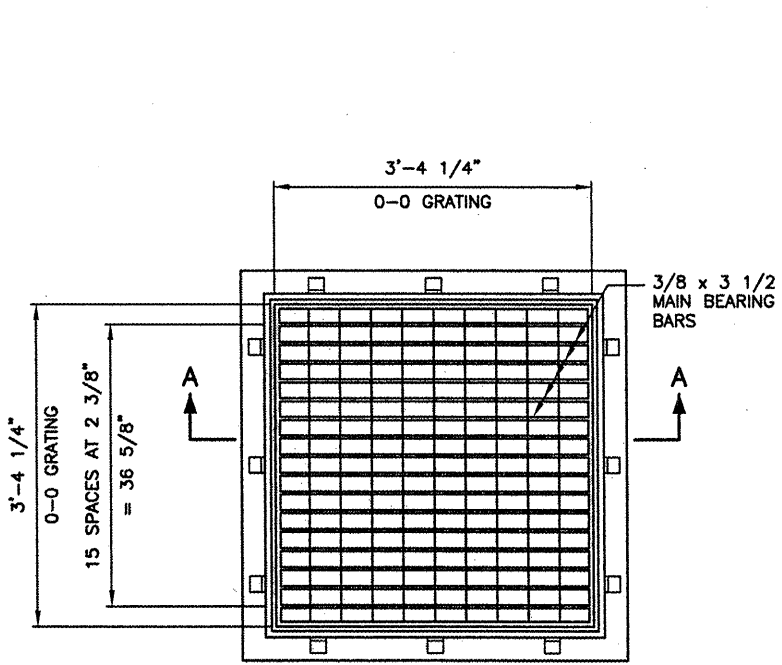
0 1 2  
 THIS BAR IS EQUAL TO 2"  
 AT FULL SCALE (34X22).

**SPRINGFIELD AIRPORT AUTHORITY**  
**ABRAHAM LINCOLN CAPITAL AIRPORT**  
**SPRINGFIELD, ILLINOIS**

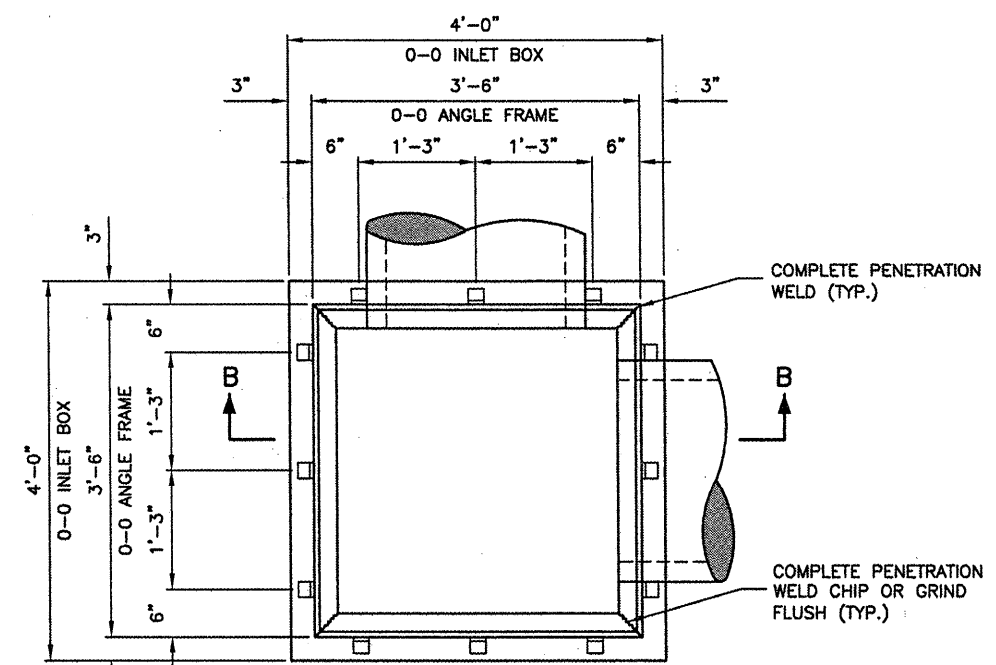
**RECONSTRUCT AND EXPAND THE SOUTHEAST RAMP**  
**INLET DETAIL**

© Copyright CMT, Inc.  
**CMT**  
 CRAWFORD, MURPHY & TILLY, INC.  
 CONSULTING ENGINEERS  
 License No. 84-000610

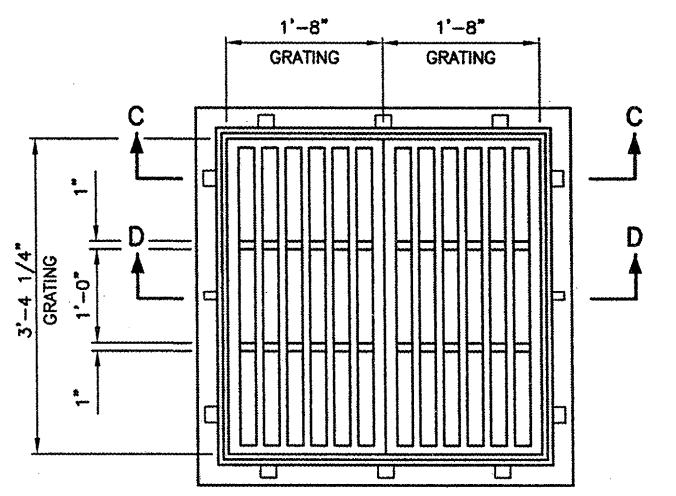
DESIGN BY:	RLV/KLB
DRAWN BY:	CMT
CHECKED BY:	RLV
APPROVED BY:	RLV
DATE:	JANUARY 27, 2009
JOB No:	08035-08
IL PROJ. NO.	SPI-3885
AIP PROJ. NO.	3-17-0096-XX
SHEET	25 OF 40 SHEETS



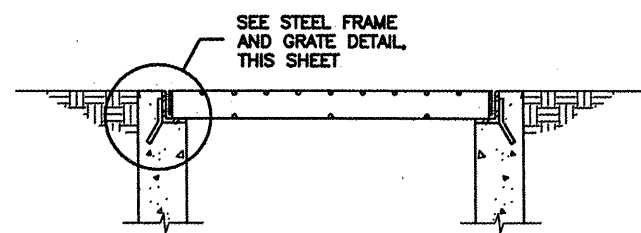
**PLAN**  
N.T.S.



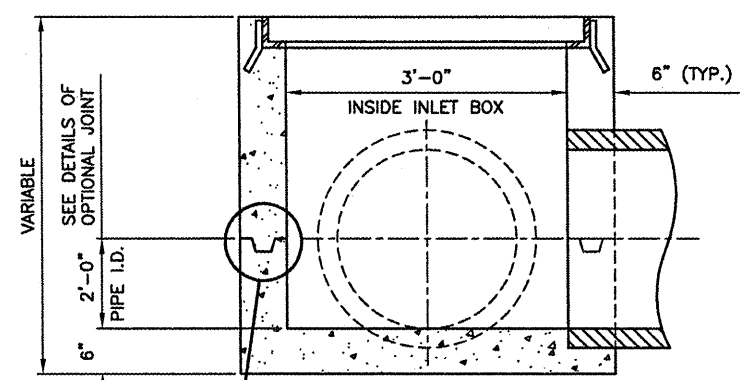
**PLAN**  
N.T.S.



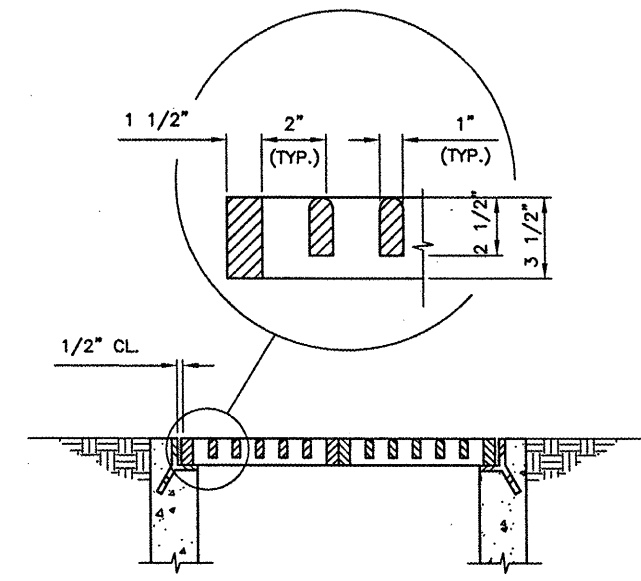
**PLAN**  
N.T.S.



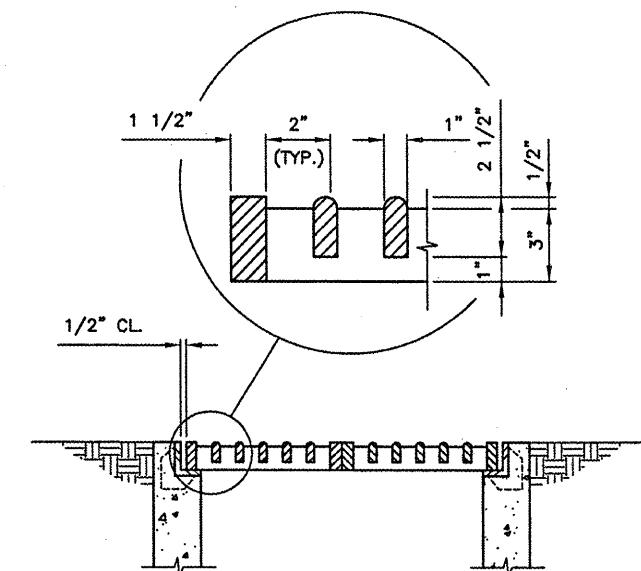
**SECTION A-A**  
N.T.S.



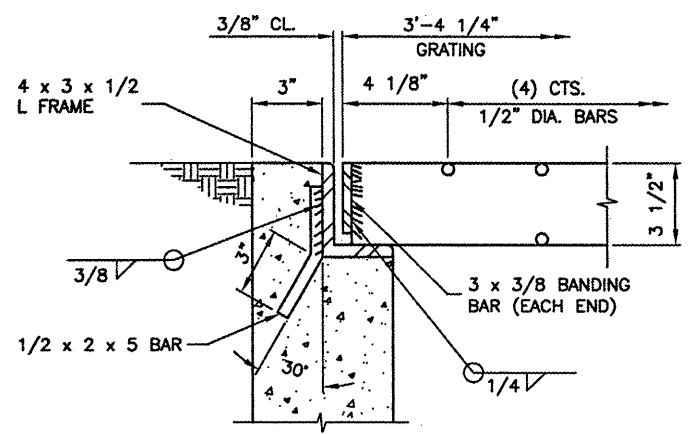
**SECTION B-B**  
N.T.S.



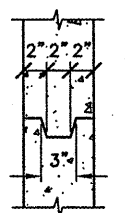
**SECTION C-C**  
N.T.S.



**SECTION D-D**  
N.T.S.



**STEEL FRAME & GRATE DETAIL**  
N.T.S.



**OPTIONAL JOINT DETAIL**  
N.T.S.

**INLET NOTE**  
 INLET IS AN IDOT STD. 542546, FLUSH  
 INLET BOX FOR MEDIAN. FRAME &  
 GRATES ARE NEENAH R-3807 OR  
 APPROVED EQUAL.

**CAST FRAME & GRATE DETAILS**  
N.T.S.