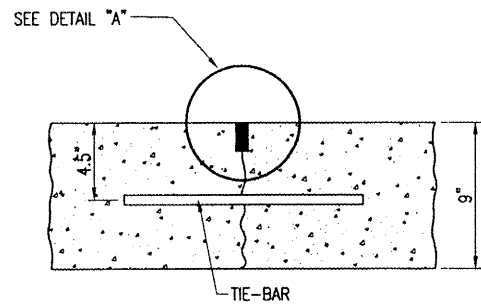
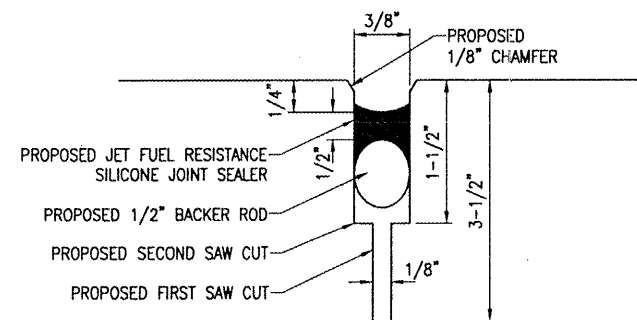


P:\S\09\_10-51 AM HAGL000362  
 \REPORTS\COLES\08A0147\AIRPORT\ SHEETS\R-575FEN.DWG -- Layout1

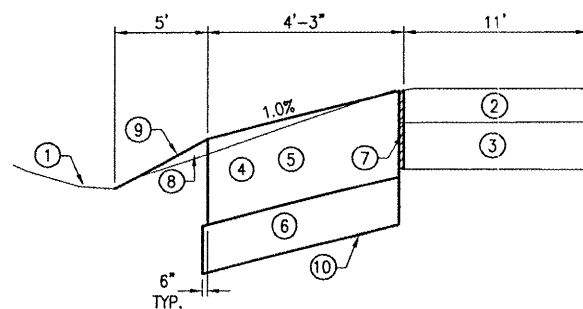


TYPE G HINGED

**CONTRACTION JOINTS**



**DETAIL "A"**  
"NOT TO SCALE"



**TYPICAL SECTION "A-A"**  
"NOT TO SCALE"

**LEGEND FOR TYPICAL SECTION "A-A"**

- ① EXISTING GRADE
- ② EXISTING BITUMINOUS SURFACE COURSE (4" DEPTH)
- ③ EXISTING CRUSHED AGGREGATE BASE COURSE (6" DEPTH)
- ④ PROPOSED UNCLASSIFIED EXCAVATION (152)
- ⑤ PROPOSED P.C. CONCRETE, 9" DEPTH (610)
- ⑥ PROPOSED CRUSHED AGGREGATE BASE COURSE, 6" DEPTH (209)
- ⑦ PROPOSED BITUMINOUS PAVEMENT AND AGGREGATE BASE COURSE REMOVAL
- ⑧ PROPOSED EARTH FILLET (152)
- ⑨ PROPOSED GRADE
- ⑩ SEPARATION FABRIC

**UTILITY NOTE**

THE CONTRACTOR SHALL LOCATE ALL J.U.L.I.E. UTILITIES BEFORE ANY CONSTRUCTION ACTIVITIES BEGIN.

ANY EXISTING UTILITY LINES DAMAGED DURING CONSTRUCTION SHALL BE REPAIRED BY THE CONTRACTOR AT HIS OWN EXPENSE.

**JOINTING NOTES**

ALL EXPOSED JOINT EDGES SHALL BE EDGED WITH AN APPROVED TOOL HAVING A RADIUS OF 1/4" OR STONED TO PRODUCE THE 1/8" CHAMFER.

ALL LONGITUDINAL AND TRANSVERSE CONTRACTION AND CONSTRUCTION JOINTS SHALL BE SAWED.

ALL TIE-BARS SHALL BE SECURELY HELD IN PLACE BY SUPPORT PINS OR OTHER METHODS TO PREVENT SHIFTING DURING AND AFTER CONCRETE PLACEMENT. SUPPORT PINS SHALL BE OF SUFFICIENT LENGTH TO PENETRATE AT LEAST 6" INTO THE SUBGRADE.

ALL TIE-BARS SHALL BE PLACED AT A POINT NOT EXCEEDING 15" OR CLOSER THAN 6" FROM A TRANSVERSE, CONTRACTION, EXPANSION, OR CONSTRUCTION JOINT AND SPACED 30" ON CENTERS AND SHALL BE NO. 5 DEFORMED BARS, 30" IN LENGTH.

ALLOWABLE TOLERANCES FOR GROOVE DEPTH WILL BE +1/8" FOR CONSTRUCTION JOINTS AND +1/4" FOR CONTRACTION JOINTS.

THE COST OF ALL TIE-BARS, SAWING AND SEALING SHALL BE INCLUDED IN THE COST OF THE P.C.C. PAVEMENT.

PRIOR TO PLACING ADJACENT PAVEMENT SECTIONS, THE VERTICAL EDGE SHALL BE CHECKED FOR TRUENESS IF THE FACE IS BURRED OR IRREGULAR, THE CONTRACTOR SHALL GRIND, STONE OR SAW THE FACE A MINIMUM OF 2" IN DEPTH TO PRODUCE A SMOOTH AND STRAIGHT EDGE.

WHEN CONSTRUCTING "FILL-IN" PAVEMENT LANES THE CONTRACTOR SHALL USE BELTING OR OTHER PROTECTIVE MATERIAL FOR THE PAVING MACHINE TO TRAVEL ON AND WILL ROPE THE TRANSVERSE JOINTS.

JOINT SEALANT SHALL BE AS SPECIFIED IN THE SPECIAL PROVISIONS ITEM 501-2.5.

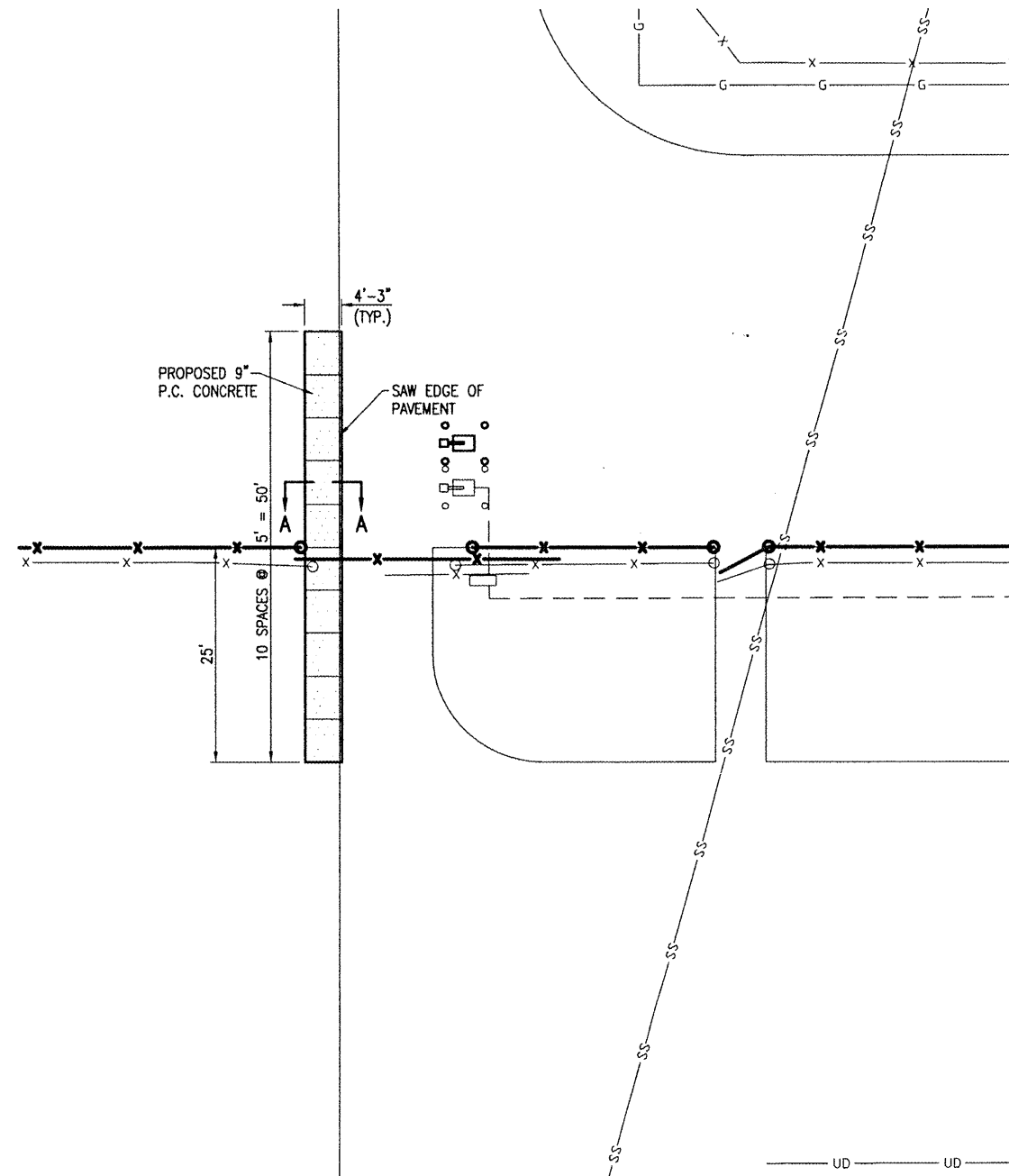
CURING COMPOUND WILL BE AS SPECIFIED IN THE SPECIFICATIONS, ITEM 501-3.17 AND SHALL BE APPROVED PRIOR TO THE PAVING OPERATION BY THE ENGINEER.

ALL NON-ALIGNED EDGES WILL BE SAWED FULL DEPTH.

THE PROPOSED JOINTING WILL BE IN ACCORDANCE WITH THE DETAILS SHOWN ON THIS SHEET.

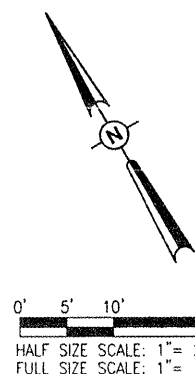
THE LOCATION, SIZE AND TYPE OF MATERIAL OF EXISTING UNDERGROUND UTILITIES INDICATED ON THE PLANS IS NOT REPRESENTED AS BEING ACCURATE, SUFFICIENT OR COMPLETE. IT SHALL BE THE CONTRACTOR'S RESPONSIBILITY TO DETERMINE THE ACTUAL LOCATION OF ALL SUCH FACILITIES, INCLUDING SERVICE CONNECTIONS TO UNDERGROUND UTILITIES. PRIOR TO CONSTRUCTION, THE CONTRACTOR SHALL NOTIFY THE UTILITY COMPANIES OF HIS OPERATIONAL PLANS AND SHALL OBTAIN FROM THE RESPECTIVE UTILITY COMPANIES DETAILED INFORMATION AND ASSISTANCE RELATIVE TO THE LOCATION OF THEIR FACILITIES AND THE WORKING SCHEDULE OF THE COMPANIES FOR REMOVAL OR ADJUSTMENT WHERE REQUIRED. IN THE EVENT AN UNEXPECTED UTILITY INTERFERENCE IS ENCOUNTERED DURING CONSTRUCTION, THE CONTRACTOR SHALL IMMEDIATELY NOTIFY THE UTILITY COMPANY OF JURISDICTION. THE ENGINEER SHALL ALSO BE IMMEDIATELY NOTIFIED. ANY SUCH MAINS AND SERVICES SHALL BE RESTORED TO SERVICE AT ONCE AND PAID FOR BY THE CONTRACTOR AT NO ADDITIONAL COST TO THE CONTRACT.

CALL J.U.L.I.E. FOR UTILITY INFORMATION AT 1-800-892-0123.



**DETAIL "D"**  
SCALE 1" = 10'

- LEGEND**
- EXISTING PAVEMENT
  - EXISTING ELECTRICAL CABLES
  - UU EXISTING UNDERDRAIN
  - SS EXISTING STORM SEWER
  - G EXISTING GAS LINE
  - X EXISTING FENCE
  - EXISTING GATE OPERATOR
  - EXISTING CARD READER
  - PROPOSED FENCE



CO055

REVISION	DATE	BY

COLES COUNTY AIRPORT  
 AUTHORITY  
 COLES COUNTY MEMORIAL AIRPORT

IL PROJ: MTO-3831 A.I.P. PROJ: 3-17-0066-B22

Hanson Project No. 08A0147D 0800	08/04/08
Filename: R-575FEN.DWG	08/04/08
Scale: 1" = 10'	xx/xx/xx
Date: 08/04/08	
LAYOUT	CAH
DRAWN	BAK
REVIEWED	CAH

**HANSON**  
 Hanson Professional Services Inc.  
 1526 South Shreve Street  
 Springfield, IL 62766  
 Offices Nationwide

PERIMETER FENCE INSTALLATION  
 PROPOSED NORTH GATE PAVEMENT IMPROVEMENTS

**11**