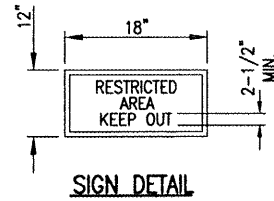
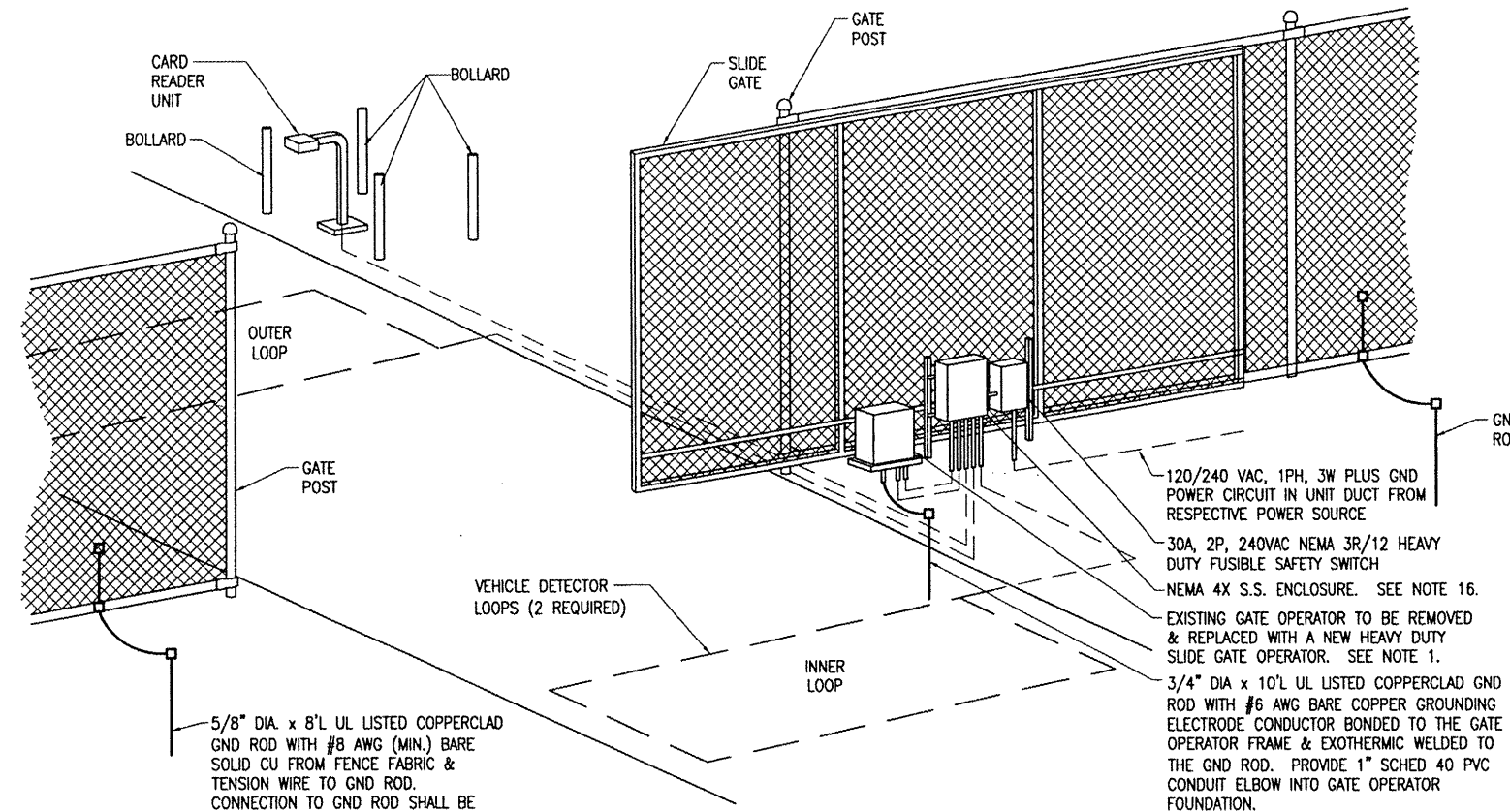


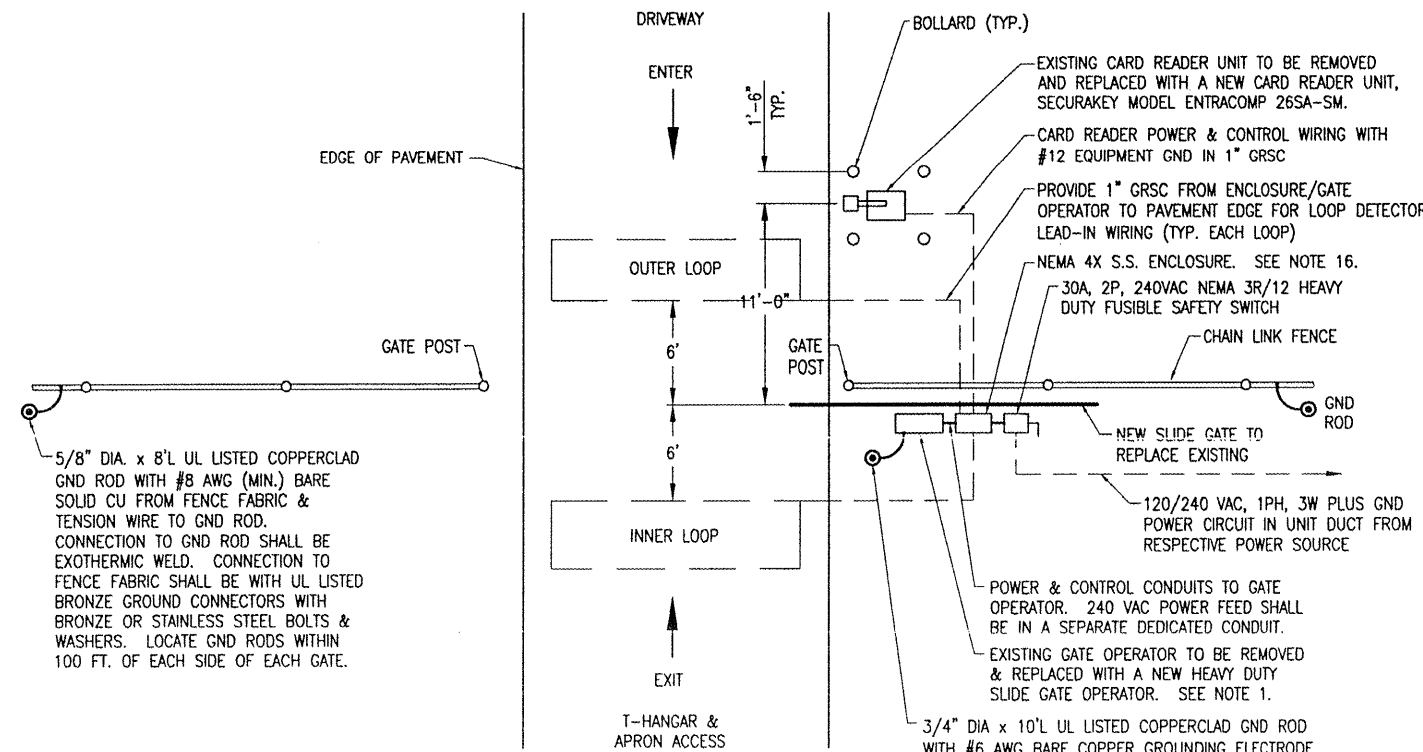
VEHICLE DETECTOR LOOPS		
GATE SIZE	LOOP SIZE	NO. OF TURNS
8' TO 12'	4' X 6'	3 TURNS
12' TO 16'	4' X 10'	2 TURNS
16' TO 20'	4' X 14'	2 TURNS
20' TO 24'	4' X 18'	2 TURNS
24' TO 30'	6' X 22'	2 TURNS
30' TO 34'	6' X 26'	2 TURNS



NOTE:  
0.08 GA. ALUMINUM ALLOY SHEET  
LETTERING COLOR SHALL BE RED.  
EACH GATE SHALL REQUIRE ONE  
SIGN. EVERY 100' OF FENCE  
SHALL REQUIRE ONE SIGN.



ELECTRIC GATE DETAIL  
"NOT TO SCALE"



ELECTRIC GATE PLAN  
"NOT TO SCALE"

NOTES:

- SEE SPECIAL PROVISION SPECS FOR REQUIREMENTS ON RESPECTIVE GATE & GATE OPERATOR SYSTEM.
- ALL DIMENSIONS AND LAYOUT INFORMATION SHOWN SHOULD BE ADJUSTED AS RECOMMENDED BY THE MANUFACTURER. SEE RESPECTIVE SITE PLAN FOR EACH GATE.
- CONCRETE FOUNDATIONS SHALL BE PROVIDED FOR THE SLIDE GATE OPERATOR AND THE CARD READER CONTROL UNIT. FOUNDATION FOR THE GATE OPERATOR SHALL BE 48" (MIN.) IN DEPTH AND OF THE SIZE RECOMMENDED BY THE MANUFACTURER PLUS MOUNTING SPACE FOR SAFETY SWITCH & J-BOX. FOUNDATION FOR THE CARD READER ACCESS CONTROL UNIT SHALL BE 48" (MIN.) IN DEPTH, AS DETAILED HEREIN.
- 1" GRS CONDUIT WILL BE REQUIRED BETWEEN THE SLIDE GATE OPERATOR AND THE CARD READER ACCESS CONTROL UNIT AND BETWEEN THE SLIDE GATE OPERATOR AND THE DETECTOR LOOPS. THE MINIMUM BURYING DEPTH IS 24". ALL METAL CONDUITS ENTERING THE GATE OPERATOR SHALL BE BONDED TO THE GATE OPERATOR FRAME WITH A #8 AWG (MIN.) COPPER BONDING JUMPER. CONFIRM CONTROL WIRING REQUIREMENTS WITH THE RESPECTIVE GATE OPERATOR SALES AND SERVICE REPRESENTATIVE.
- THE GUARD/BOLLARD POSTS SHALL BE 4" DIA. STEEL (HEAVY WALL) PIPE, CONCRETE FILLED, AND SHALL EXTEND FROM THE TOP OF THE CARD CONTROL UNIT TO A DEPTH OF 48" BELOW THE GROUND LINE. THE CONCRETE FOOTER DIMENSION SHALL BE AS DETAILED HEREIN. GUARD/BOLLARD POSTS SHALL BE PAINTED WITH YELLOW COLORED ENAMEL FINISH.
- THE SLIDING GATE SHALL BE CANTILEVER TYPE OF THE SIZE CALLED FOR ON THE PLANS, SHALL HAVE AN ENCLOSED ROLLER ASSEMBLY WHICH IS PROTECTED FROM FREEZING RAIN AND SNOW, AND SHALL BE AS MANUFACTURED BY TMYCAL CORPORATION OR APPROVED EQUAL.
- AS PART OF THIS ITEM 250 CARDS AND 12 OR 13 (SEE SPECIAL PROVISIONS FOR QUANTITY FOR RESPECTIVE GATE) REMOTE TRANSMITTERS FOR EACH GATE SHALL BE PROVIDED BY THE CONTRACTOR. COORDINATE PROGRAMMING OF CARDS & TRANSMITTER FREQUENCIES WITH THE AIRPORT MANAGER.
- CONTRACTOR SHALL COORDINATE ANY POWER OUTAGES TO EXISTING EQUIPMENT WITH THE RESPECTIVE OWNER'S REPRESENTATIVE AND THE AIRPORT MANAGER.
- INCLUDE UL LISTED SECONDARY SURGE ARRESTER FOR THE GATE OPERATOR SUITABLE FOR USE ON 240 VAC, 1 PHASE, 2 WIRE PLUS GROUND SYSTEM, WITH SURGE CURRENT RATING OF 100 KA PER MODE, LIFETIME PRODUCT REPLACEMENT WARRANTY, DITEK MODEL DTK-120/240 CM PLUS OR EQUAL.
- CONCRETE USED FOR INSTALLING THE GATE OPERATOR, CARD READER, & FENCE SHALL MEET THE REQUIREMENTS OF STRUCTURAL PORTLAND CEMENT CONCRETE ITEM 610.
- ALL ELECTRICAL EQUIPMENT SHALL BE INSTALLED IN CONFORMANCE WITH NFPA 70 - NATIONAL ELECTRICAL CODE (NEC) MOST CURRENT ISSUE IN FORCE, THE RESPECTIVE EQUIPMENT MANUFACTURER'S DIRECTIONS AND ALL OTHER APPLICABLE LOCAL CODES, LAWS, ORDINANCES, AND REQUIREMENTS IN FORCE. ANY INSTALLATIONS WHICH VOID THE UL LISTING, ETL LISTING, (OR OTHER THIRD PARTY LISTING) AND/OR THE MANUFACTURER'S WARRANTY OF A DEVICE WILL NOT BE PERMITTED.
- PROVIDE A WEATHERPROOF ENGRAVED PHENOLIC OR PLASTIC LEGEND PLATE FOR THE SAFETY SWITCH AT THE RESPECTIVE GATE OPERATOR NOTING THE GATE SERVED, VOLTAGE, AND RESPECTIVE POWER SOURCE CIRCUIT AND LOCATION.
- PAYMENT FOR EACH SLIDE GATE, CARD READER, GATE OPERATOR, AND ALL ASSOCIATED CONTROL & SAFETY DEVICES SHALL BE ON A LUMP SUM BASIS AND SHALL BE FULL COMPENSATION FOR ALL MATERIALS, EQUIPMENT, CABLE IN CONDUIT, DUCT, OR UNIT DUCT, GROUNDING, LABOR, TOOLS, COORDINATION, TESTING, AND INCIDENTALS REQUIRED TO INSTALL THE GATE COMPLETE AND IN OPERATING CONDITION.
- CONTROL CIRCUIT WIRING SHALL NOT BE ROUTED THROUGH THE SAFETY SWITCH/DISCONNECT.
- LOCATE RECEIVER ANTENNA TO PROVIDE PROPER OPERATION FROM REMOTE TRANSMITTERS FROM A DISTANCE UP TO 150 FEET. INCLUDE CONDUITS & SUPPORT HARDWARE.
- ALL CONTROL POWER TRANSFORMERS, POWER SUPPLIES, RECEPTACLES, LOOP DETECTOR AMPLIFIERS, SECONDARY SAFETY DEVICE EQUIPMENT, AND ANY OTHER ASSOCIATED CONTROLS SHALL BE INSTALLED EITHER INSIDE THE GATE OPERATOR CONTROL PANEL OR INSIDE A SEPARATE NEMA 4 STAINLESS STEEL CONTROL PANEL ENCLOSURE. WHERE THE CONTROL EQUIPMENT IS TO BE INSTALLED INSIDE THE GATE OPERATOR CONTROL PANEL THE CONTRACTOR SHALL COORDINATE THIS WITH THE GATE OPERATOR MANUFACTURER AND THE RESPECTIVE GATE OPERATOR EQUIPMENT SUPPLIER. LOCATING THESE CONTROLS OUTSIDE OF GATE OPERATOR CONTROL PANEL BUT WITHIN THE GATE OPERATOR HOUSING WILL NOT MEET THIS REQUIREMENT.

BY	
REVISION	
DATE	
COLES COUNTY AIRPORT AUTHORITY COLLS COUNTY MEMORIAL AIRPORT	
I.L. PROJ.: MTO-3831 A.I.P. PROJ.: 3-17-0066-B22	
Hanson Project No. 08A0147D_0800 Filename: R-573FENDWG Scale: NOT TO SCALE Date: 02/04/09	LAYOUT: KNL 01/02/09 DRAWN: MW 01/06/09 REVIEWED: CAH 01/07/09
Hanson Professional Services Inc. 1525 South Sixth Street Springfield, Illinois 62703-2886 Offices Nationwide	
PERIMETER FENCE INSTALLATION	PROPOSED ELECTRIC SLIDE GATE DETAILS
18	
18 of 21 sheets	