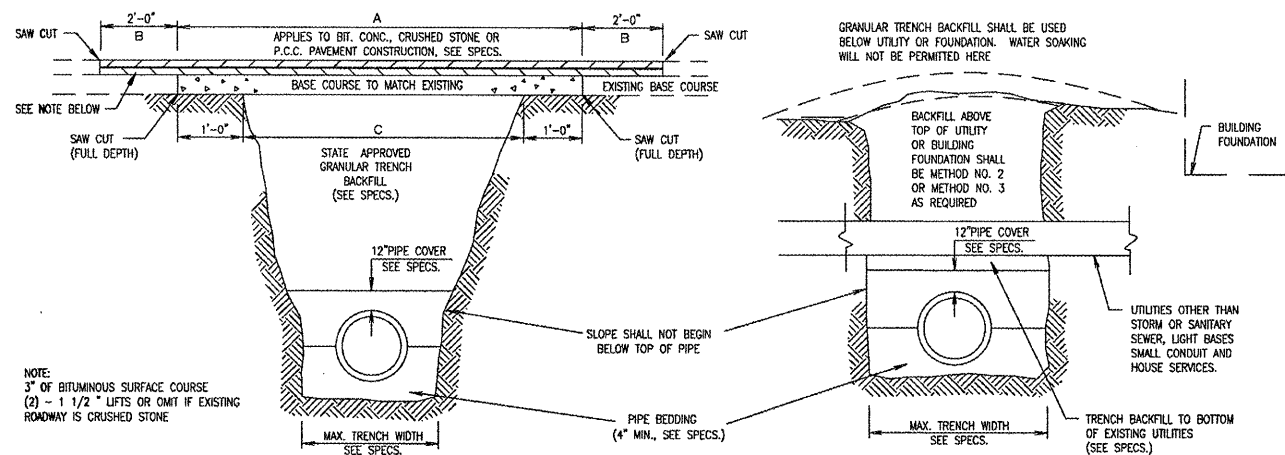


BACKFILL METHOD NO. 1

FOR BACKFILLING IN OPEN AREAS, SUCH AS CROPLAND OR OTHER ZONES WITH UNCLASSIFIED AND NON-IMPROVED SURFACES

BACKFILL METHOD NO. 2 OR 3

FOR BACKFILLING IN SODDING OR GRASSED AREAS (EXCEPT NEAR BUILDING FOUNDATION) AND BENEATH OR ALONG NON-RIGID SURFACES.



BACKFILL METHOD NO. 4

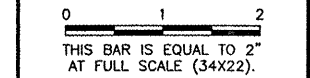
FOR BACKFILLING BENEATH CONCRETE, ASPHALT CRUSHED STONE AND OIL & CHIP SURFACES, INCLUDING SIDEWALKS, DRIVES, PARKING AREAS, ETC.  
 A. EXISTING SURFACE IN THIS AREA TO BE REMOVED FIRST (SAW CUT FULL DEPTH).  
 B. ADDITIONAL PAVEMENT TO BE REMOVED.

NOTE:  
 FOR ACCEPTABLE GRANULAR TRENCH BACKFILL MATERIAL, SEE SPEC. SECTION 02222.

BACKFILL METHOD NO. 5

FOR BACKFILLING NEAR BUILDING FOUNDATIONS OR OTHER STRUCTURES OR UTILITIES PRESENTING SPECIAL HAZARDS.

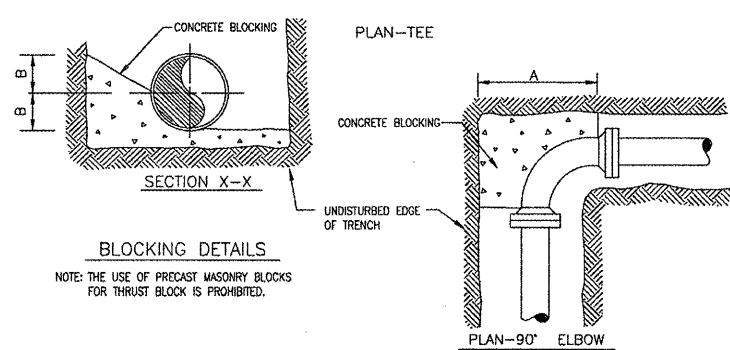
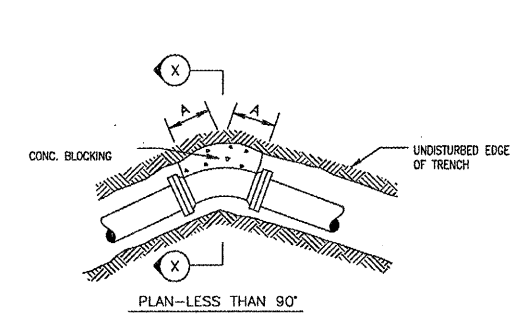
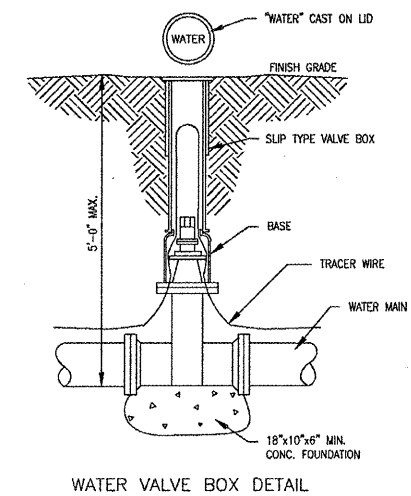
REVISIONS		
NUMBER	BY	DATE



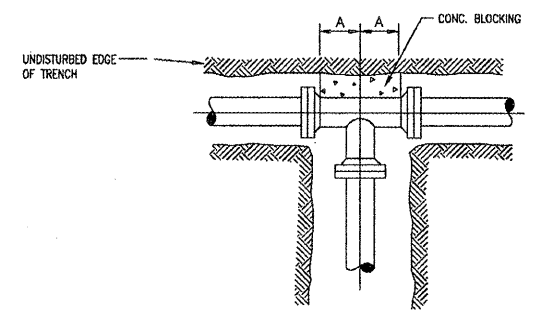
**GREATER KANKAKEE AIRPORT  
 KANKAKEE, ILLINOIS**  
**CONSTRUCT SOUTHEAST QUADRANT FIRE PROTECTION**  
**AQUA ILLINOIS NOTES AND DETAILS**  
**SHEET 1**

© Copyright: CMT, Inc.  
**CMT**  
 CRAWFORD, MURPHY & TILLY, INC.  
 CONSULTING ENGINEERS  
 License No. 184-000613

DESIGN BY:	CAL
DRAWN BY:	JRO
CHECKED BY:	CAL
APPROVED BY:	CAL
DATE:	01/26/07
JOB No:	06075-02
IL PROJECT:	IKK-3661
A.I.P. PROJECT:	3-17-0057-B13
SHEET	6 OF 7 SHEETS



NOTE: THE USE OF PRECAST MASONRY BLOCKS FOR THRUST BLOCK IS PROHIBITED.



GENERAL NOTES

- ALL WATER MAIN CONSTRUCTION SHALL BE IN ACCORDANCE WITH "STANDARD SPECIFICATIONS FOR WATER AND SEWER MAIN CONSTRUCTION IN ILLINOIS" LATEST EDITION, AND AQUA ILLINOIS'S STANDARD SPECIFICATIONS FOR THE CONSTRUCTION OF WATER MAIN, IN THE EVENT OF A CONFLICT BETWEEN THE TWO SETS OF SPECIFICATIONS, AQUA ILLINOIS SPECIFICATIONS SHALL RULE.
- CONTRACTOR TO COORDINATE ALL CONNECTIONS TO EXISTING MAINS WITH AQUA ILL. AND CUSTOMERS.
- CONCRETE BLOCKING IS REQUIRED AT ALL APPROPRIATE LOCATIONS.
- PROVIDE #10 COATED SOLID COPPER, PLASTIC COATED, TRACER WIRE.
- ALL DIP WATER MAIN TO BE WRAPPED IN POLYETHYLENE TUBES. SEE SPEC. SECTION 02610.
- MAX. TRENCH DEPTH FOR WATER MAINS SHALL BE 5'-0". Unless otherwise noted or required. Main may have 3'-6" of cover to allow installation above sewers at crossings ONLY.
- THE CONTRACTOR SHALL CONTACT ALL LOCAL UTILITY COMPANIES PRIOR TO BEGINNING CONSTRUCTION OR EXCAVATION FOR FIELD LOCATION OF UTILITIES. Call J.U.L.I.E., 1-800-892-0123, before digging.
- THE CONTRACTOR SHALL VERIFY TO HIS OWN SATISFACTION, THE LOCATION OF ALL UTILITIES, STRUCTURES, SURVEY MARKERS, SIGNS, AND OTHER OBJECTS, AND SHALL INCLUDE IN HIS BID THE COST OF PROTECTION, REMOVAL, REPLACEMENT OR RELOCATION OF THE SAME. ALL EXISTING OBJECTS SHALL BE REPLACED IN THEIR ORIGINAL LOCATION UNLESS OTHERWISE INDICATED ON THE DRAWINGS. THE DRAWINGS MAY INDICATE THE APPROXIMATE LOCATION OF SOME UNDERGROUND UTILITIES. THE CONTRACTOR MAY EXPECT TO FIND SUCH UTILITIES WITHIN APPROXIMATELY FIVE FEET OF THE LOCATIONS INDICATED ON THE DRAWINGS, BUT HE SHALL IN EVERY CASE LOCATE AND UNCOVER SUCH UTILITIES BEFORE EXCAVATION COMMENCES WITHIN 50 FEET OF THE INDICATED LOCATION.
- THE CONTRACTOR SHALL SUPPLY OWNER WITH "AS BUILT" DRAWINGS SHOWING ANY CHANGES OR ADDITIONS TO PROJECT DRAWINGS.
- Reference, all concrete drives to be patched with 6" of PCC, min. and all sidewalks replaced with 5" of PCC, min., with trench backfill and CA-6 base. Traffic control shall be in accordance with IDOT and/or City rules & regulations.
- Consult Engineer for approval with any conflicts between drawings, notes, spec's, city and state requirements.
- Connections to existing main assisted by Aqua ILL., to be coordinated
- Consult Engineer for approval of FLUSHING PLAN