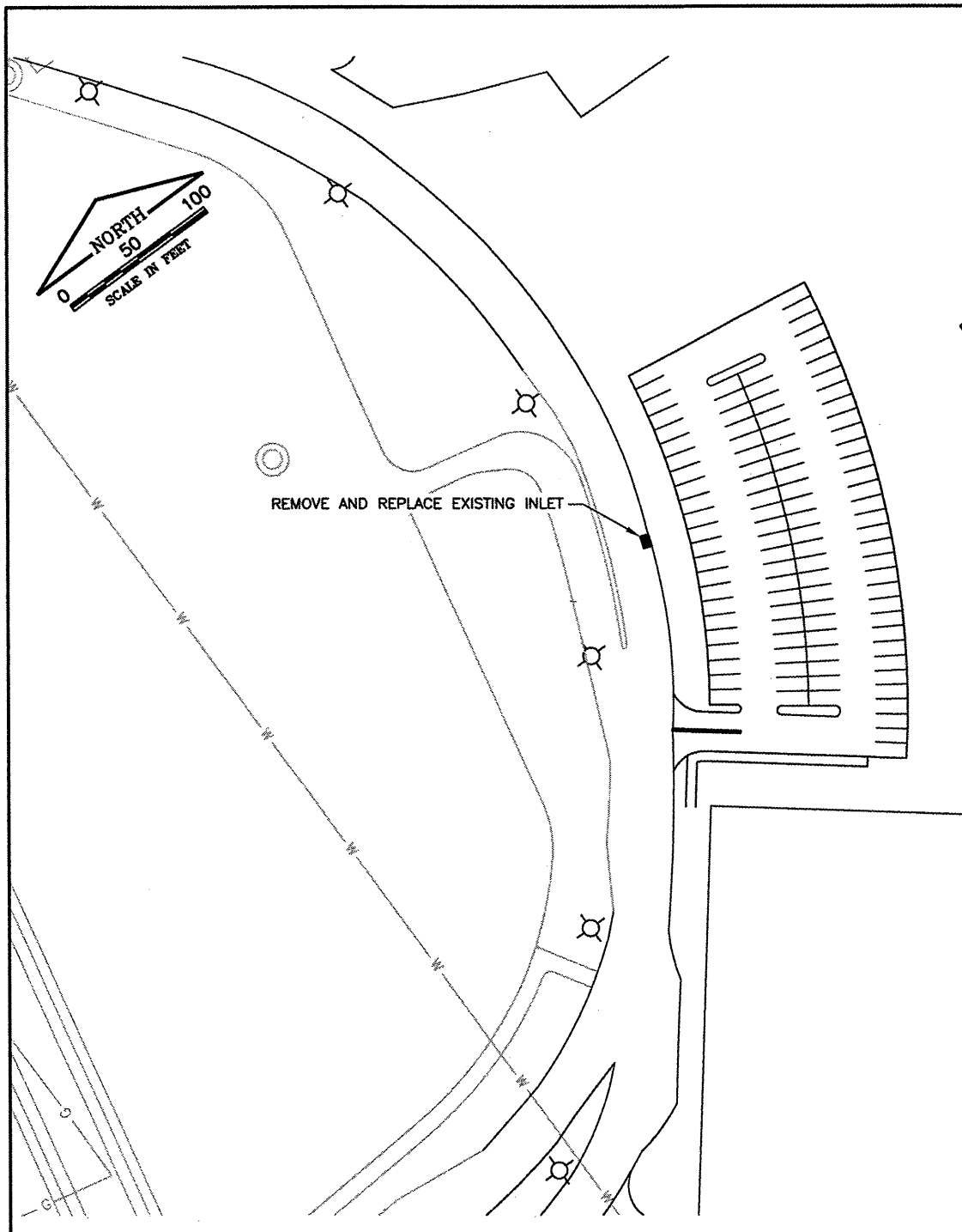


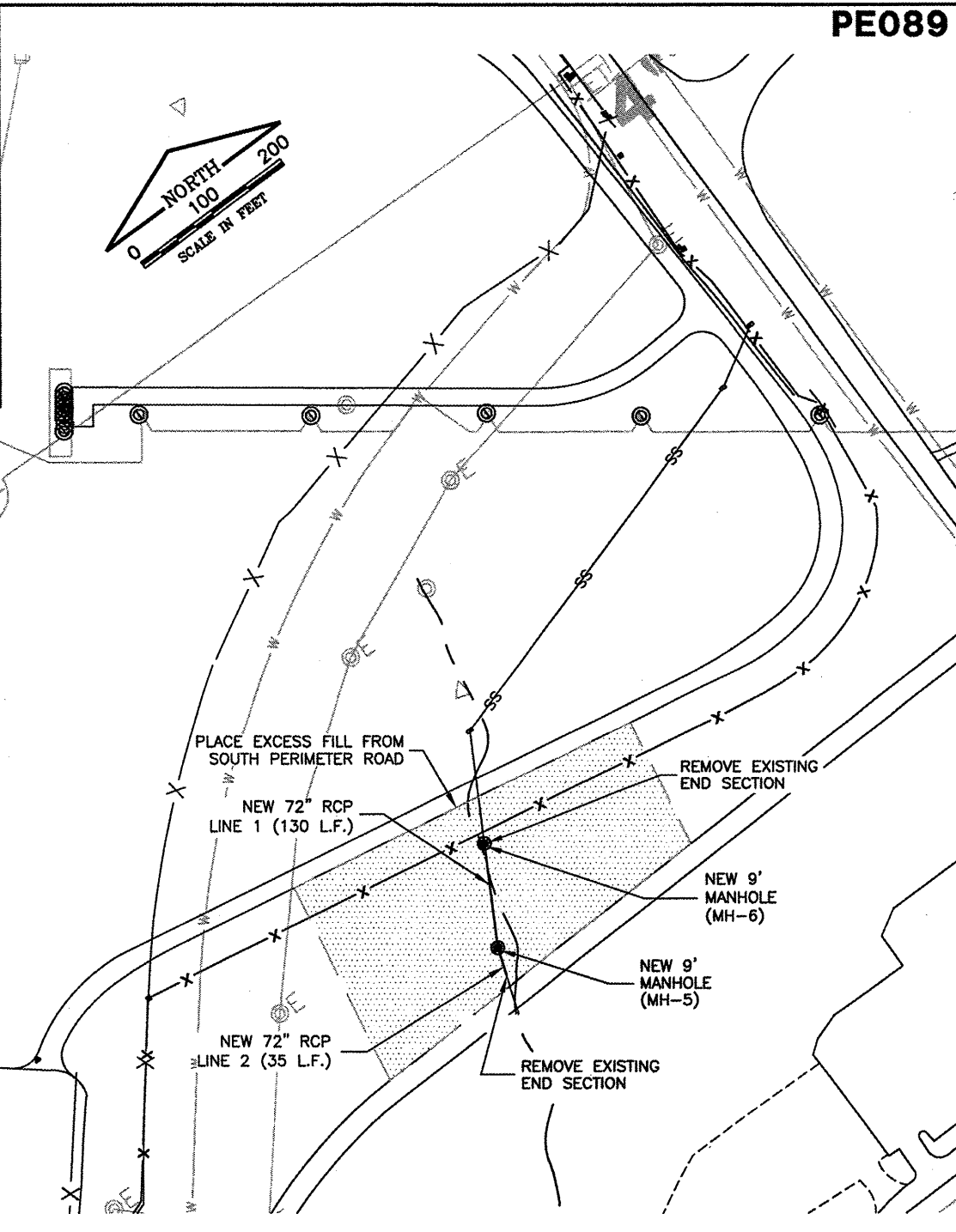
REVISIONS		
NUMBER	BY	DATE

0 1 2  
THIS BAR IS EQUAL TO 2" AT FULL SCALE (34X22). PLOT 1



**LEGEND**

- SS — NEW STORM SEWER
- SS — EXISTING STORM SEWER
- EIN-2 EXISTING INLET
- IN-2 NEW INLET
- NEW MANHOLE
- ⊙ EXISTING MANHOLE
- FES-2 NEW FLARED END SECTION
- ▨ EXCESS FILL AREA



**GENERAL WAYNE A. DOWNING**  
PEORIA INTERNATIONAL AIRPORT

**CONSTRUCT NEW PERIMETER ROAD AND PERIMETER FENCE - PROJECT 3**

© Copyright CMT, Inc.

**CMT**  
CRAWFORD, MURPHY & TILLY, INC.  
CONSULTING ENGINEERS  
License No. 94-000613

**IL PROJECT: PIA-3865**  
**AIP PROJ: 3-17-0080-XX**

FILE: GENERAL\_DRAINAGE\_PLAN\_01

DESIGN BY: TJH/SMS

DRAWN BY: CMT

CHECKED BY: CET

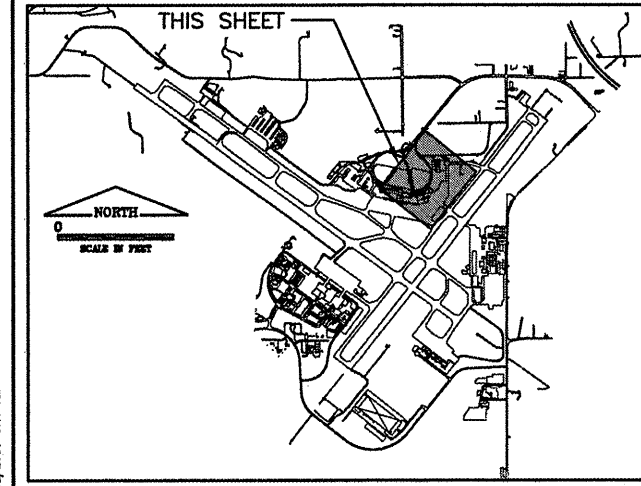
APPROVED BY: CET

DATE: 02-13-2009

JOB No: 07061-04-00

**ADDITIONAL DRAINAGE PLAN SHEET 4 OF 4**

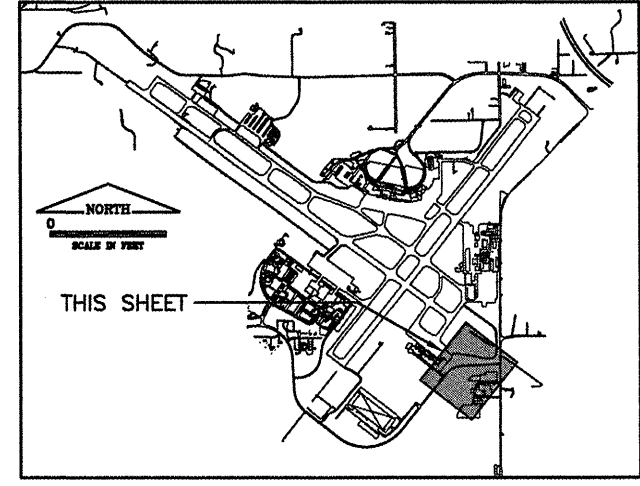
SHEET 43 OF 151 SHEETS



KEY MAP

- NOTES:**
1. PRIOR TO CASTING CURB INLET STRUCTURE, THE CONTRACTOR SHALL MAKE ALL NECESSARY FIELD MEASUREMENTS TO VERIFY THE LOCATION, INVERT, AND PIPE SIZES.
  2. SEE DRAINAGE DETAIL SHEET XX FOR CURB INLET DETAIL.

- NOTES:**
1. LOCATION OF EXISTING STORM SEWER STRUCTURES ARE SHOWN AS APPROXIMATE. CONTRACTOR SHALL FIELD VERIFY ALL LOCATIONS, STRUCTURES, SIZES, AND ORIENTATION PRIOR TO CASTING ANY STRUCTURES.
  2. AFTER REMOVING EACH OF THE EXISTING END SECTIONS, NEW PIPE SHALL BE EXTENDED FROM EACH END UNTIL INTERSECTING AT EACH RESPECTIVE NEW 9' MANHOLE. NEW PIPE SHALL THEN BE RAN TO CONNECT THE TWO NEW MANHOLES AS INDICATED. ACTUAL LOCATION OF MANHOLE MAY DIFFER FROM THE LOCATION SHOWN IN THE PLANS.



KEY MAP