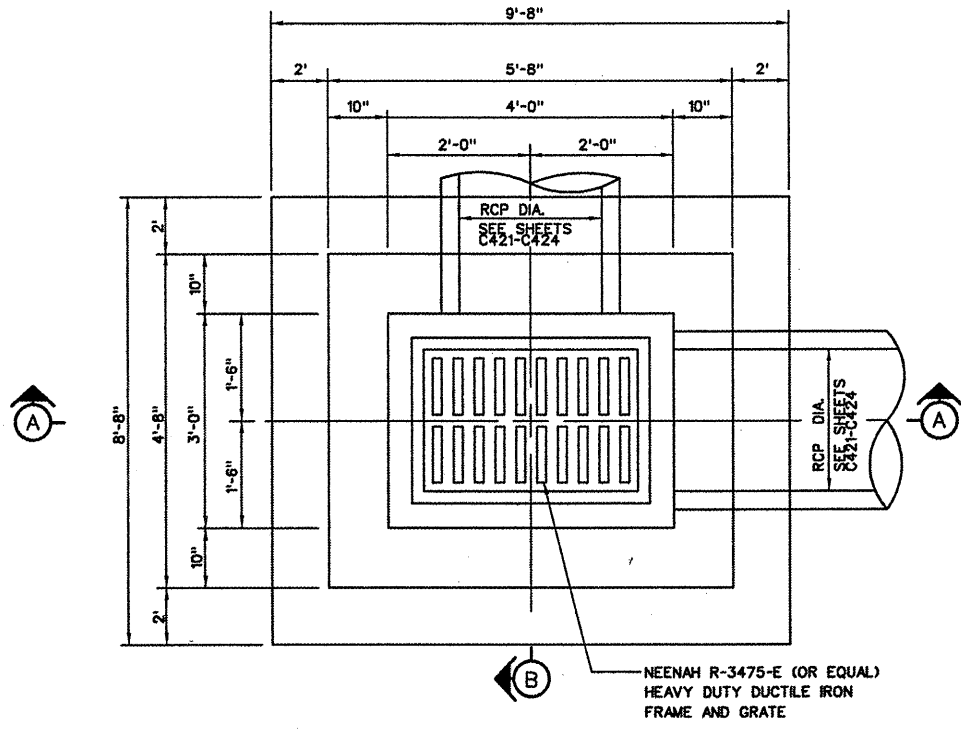
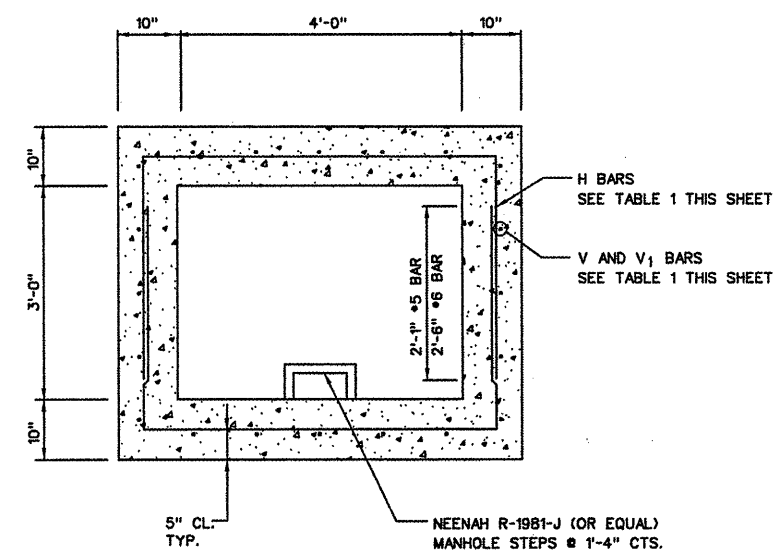


REVISIONS		
NUMBER	BY	DATE

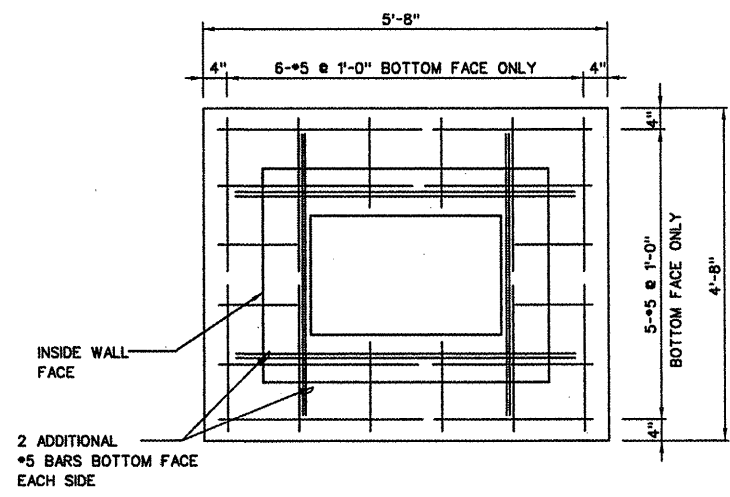
0 1 2
THIS BAR IS EQUAL TO 2" AT FULL SCALE (34X22). PLOT 1



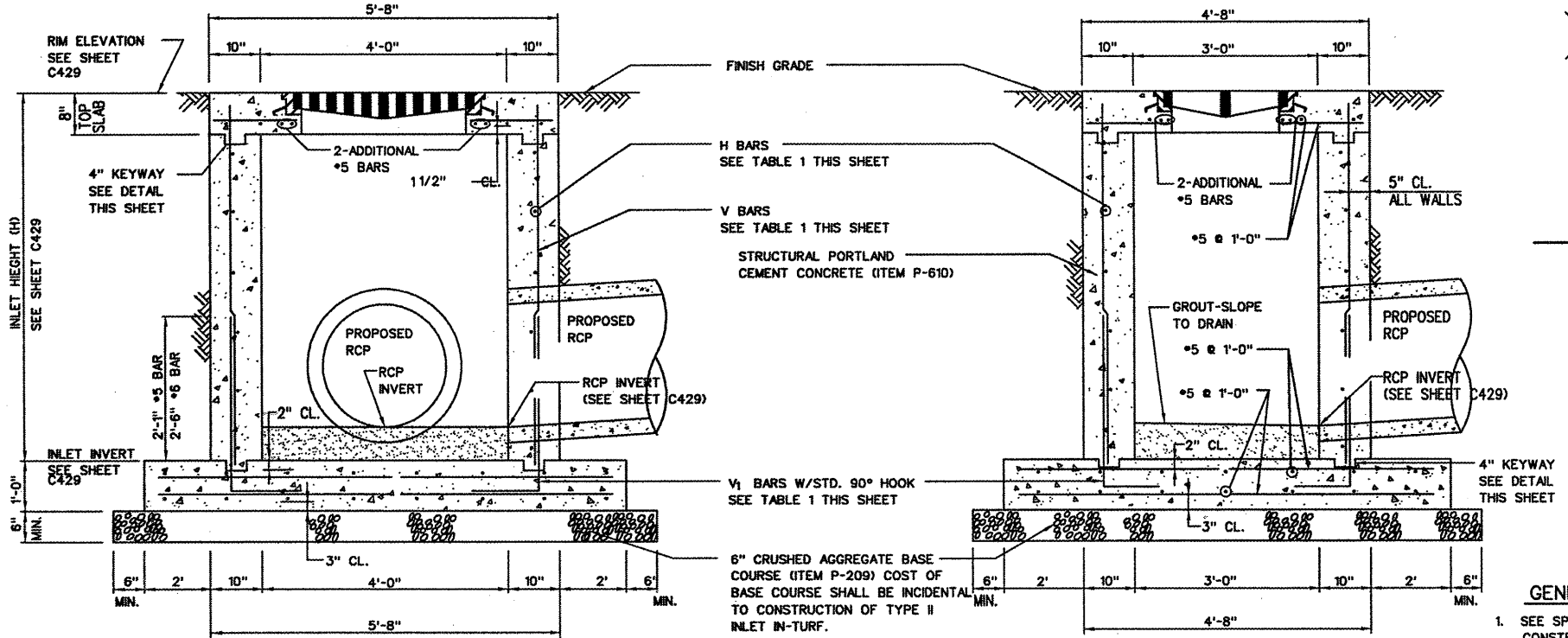
PLAN VIEW
N.T.S.



WALL REINFORCEMENT PLAN
N.T.S.



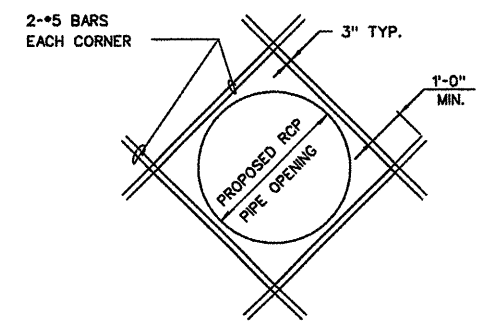
TOP SLAB REINFORCEMENT PLAN
N.T.S.



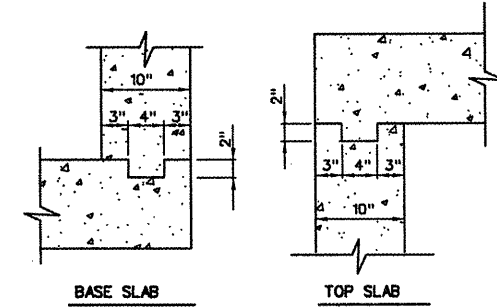
SECTION A
N.T.S.

SECTION B
N.T.S.

TYPE II INLET IN-TURF



ADDITIONAL REINFORCEMENT
AROUND PIPE PENETRATIONS
N.T.S.



KEYWAY DETAILS
N.T.S.

TABLE 1

INLET HEIGHT (H)	H BARS	V AND V ₁ BARS
H ≤ 5'	#5 @ 1'-0"	#5 @ 9"
5' < H ≤ 10'	#5 @ 1'-0"	#5 @ 9"
10' < H ≤ 15' (MAX)	#6 @ 1'-0"	#6 @ 1'-0"

GENERAL NOTES

- SEE SPECIFICATIONS FOR MATERIAL REQUIREMENTS, CONSTRUCTION METHODS, BASIS OF PAYMENT, AND OTHER REQUIREMENTS.
- PIPE PENETRATION OPENINGS FOR PRECAST STRUCTURES SHALL BE CIRCULAR. DIAMETER OF OPENING SHALL BE OUTSIDE PIPE DIAMETER PLUS 6 INCHES. GROUT OPENING SOLID WITH NON-SHRINK GROUT.
- SEE DRAINAGE STRUCTURE SCHEDULES SHEET FOR INLET TYPE, LOCATION, SIZE, RIM ELEVATION, AND INVERT ELEVATION.

GENERAL WAYNE A. DOWNING
PEORIA INTERNATIONAL AIRPORT
CONSTRUCT NEW PERIMETER ROAD AND PERIMETER FENCE - PROJECT 3

© Copyright CMT, Inc.
CMT
CRAWFORD, MURPHY & TILLY, INC.
CONSULTING ENGINEERS
License No. 184-000613

**I. PROJECT: PIA-3865
AIP PROJ. 3-17-0080-XX**

FILE: DRAINAGE_DETAILS_2
DESIGN BY: T.JH/SMS
DRAWN BY: CMT
CHECKED BY: CET
APPROVED BY: CET
DATE: 02-13-2009
JOB No: 07081-04-00

**INLET DETAILS
SHEET 1 OF 2**