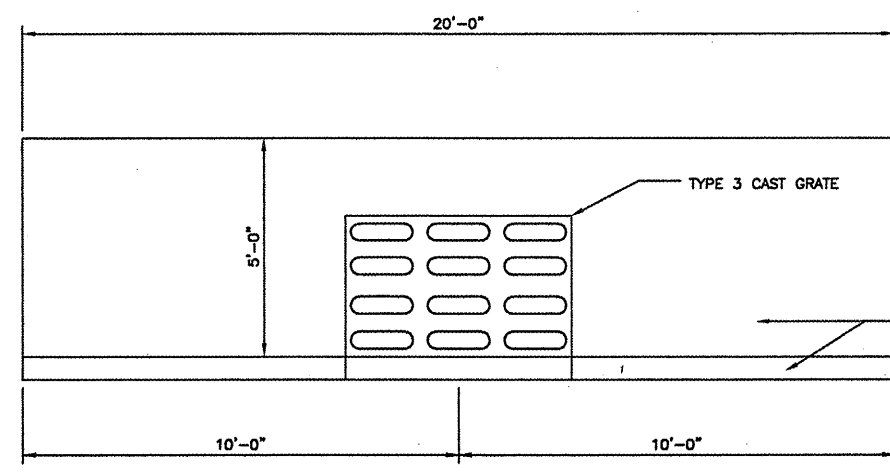


NUMBER	BY	DATE

0 1 2
THIS BAR IS EQUAL TO 2" AT FULL SCALE (3/4X22). PLOT 1

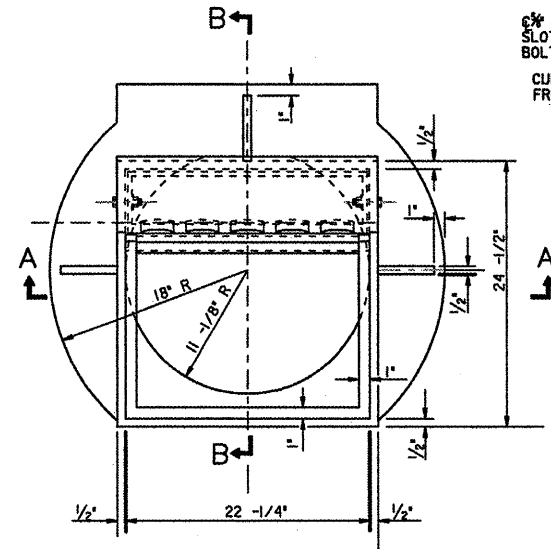


COLLAPSED INLET REMOVAL AND REPLACEMENT DETAIL
N.T.S.

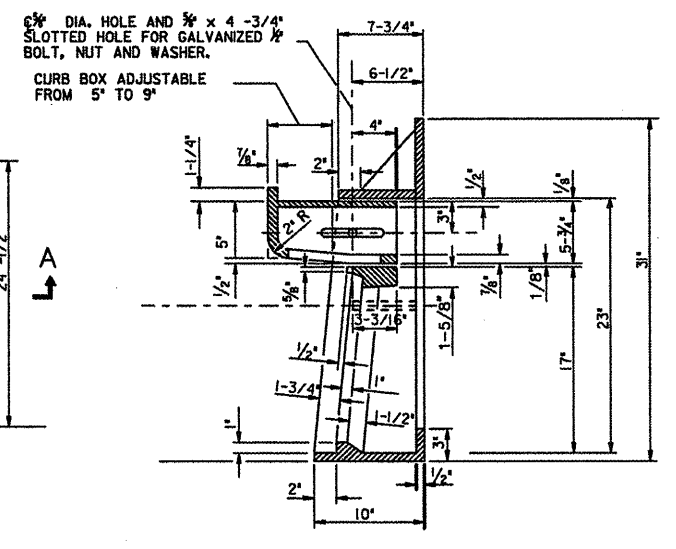
NOTES

1. CONTRACTOR SHALL REMOVE EXISTING INLET.
2. CONTRACTOR SHALL SAWCUT PAVEMENT AND CURB ADJACENT TO EXISTING INLET PRIOR TO REMOVAL.
3. CONTRACTOR SHALL USE COMPACTED SELECT GRANULAR MATERIAL AS BEDDING AND BACKFILL FOR THE INLET.
4. THE CONTRACTOR SHALL REPLACE THE CURB, GUTTER AND BITUMINOUS PAVEMENT.
5. REPLACEMENT SECTION SHALL BE 6" BITUMINOUS PAVEMENT ON 12" OF CRUSHED AGGREGATE OR AS DIRECTED BY THE ENGINEER.

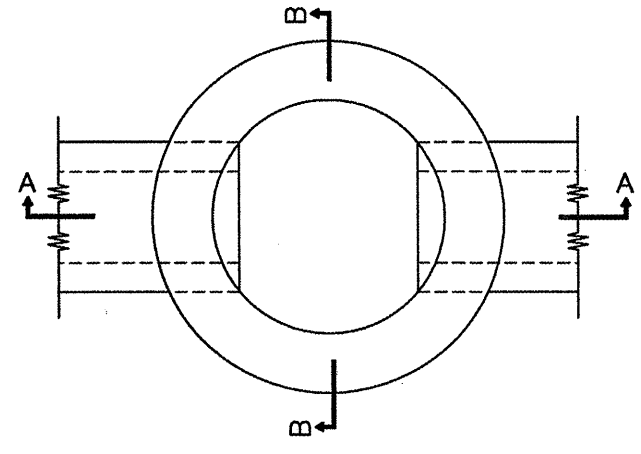
REMOVE AND REPLACE CURB AND ROADWAY PAVEMENT SURROUNDING INLET



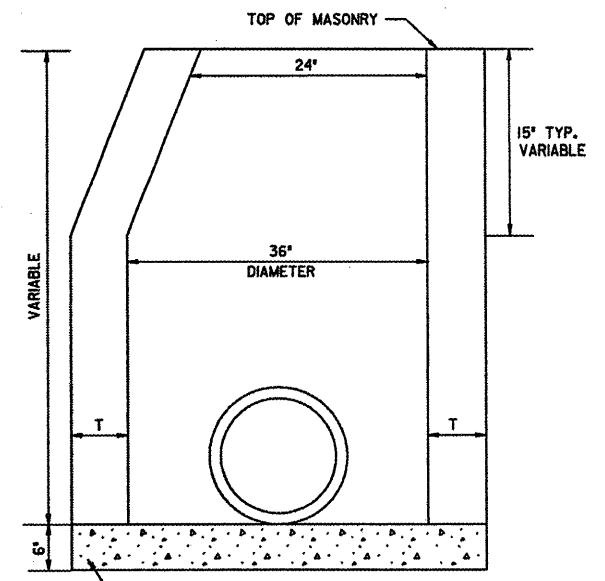
PLAN CAST FRAME
N.T.S.



SECTION B-B
N.T.S.

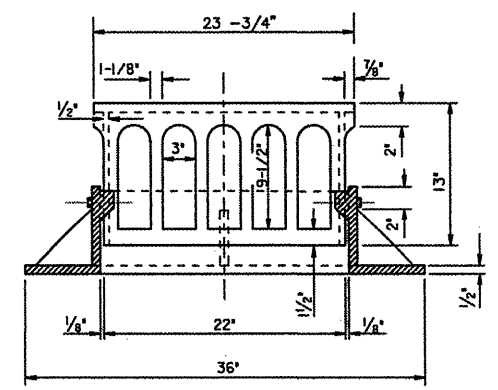


PLAN

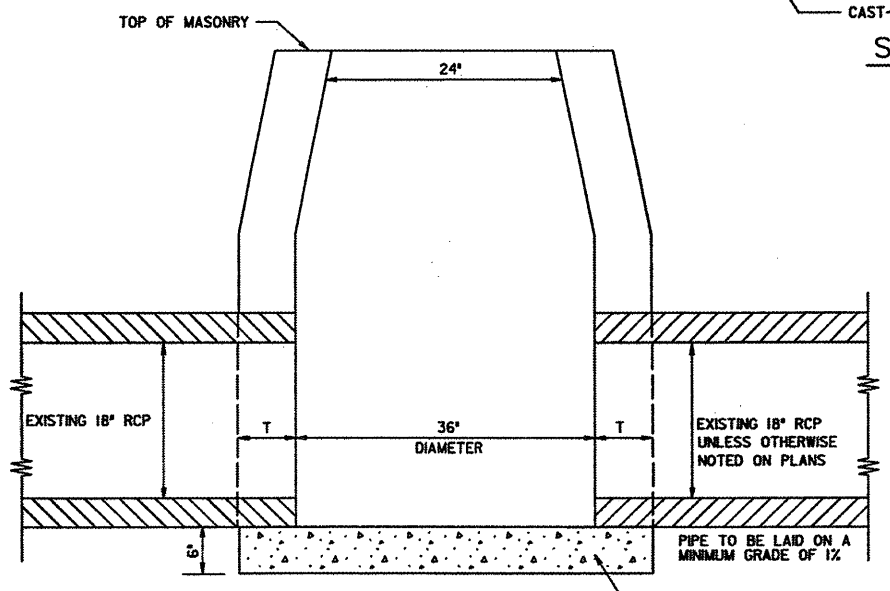


SECTION B-B
N.T.S.

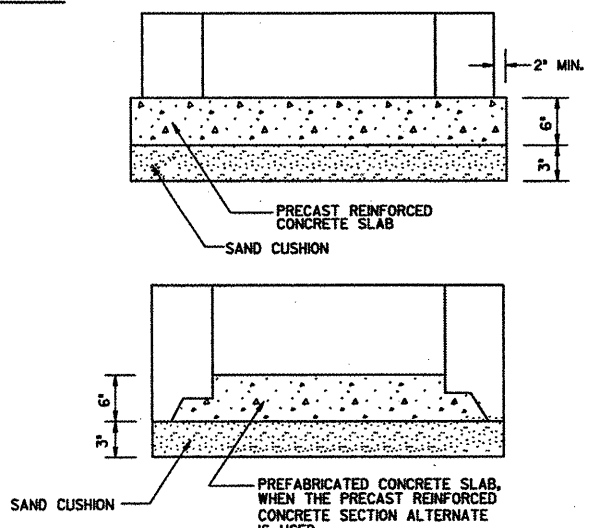
ALTERNATE MATERIALS FOR WALLS	T
CAST-IN-PLACE CONCRETE	6"
PRECAST REINFORCED CONCRETE SECTION	3"



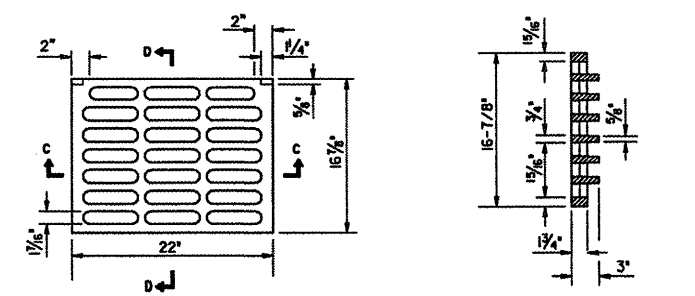
FRAME AND GRATE TYPE 3
IDOT STANDARDS 604006 AND 604011



SECTION A-A
N.T.S.

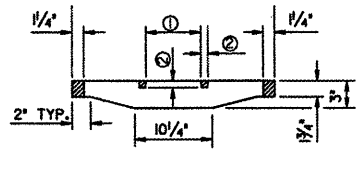


ALTERNATIVE BOTTOM SLABS
N.T.S.



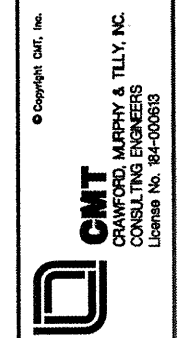
PLAN

SECTION D-D



SECTION C-C
Ø = 6" TYP.
Ø = 3/4" TYP.

GENERAL WAYNE A. DOWNING
PEORIA INTERNATIONAL AIRPORT
CONSTRUCT NEW PERIMETER ROAD AND
PERIMETER FENCE - PROJECT 3



IL PROJECT: PIA-3865
AIP PROJ: 3-17-0080-XX

FILE:	INLETDTLS_02
DESIGN BY:	TJH/SMS
DRAWN BY:	CMT
CHECKED BY:	CET
APPROVED BY:	CET
DATE:	02-13-2009
JOB No:	07061-04-00

INLET DETAILS
SHEET 2 OF 2

K:\Pecidap\070610400\Draw\Sheets\West_South_Fence\Phase 3 Sheets
FILE: INLETDTLS_02.dwg
DATE: 2/12/2009 8:27 AM