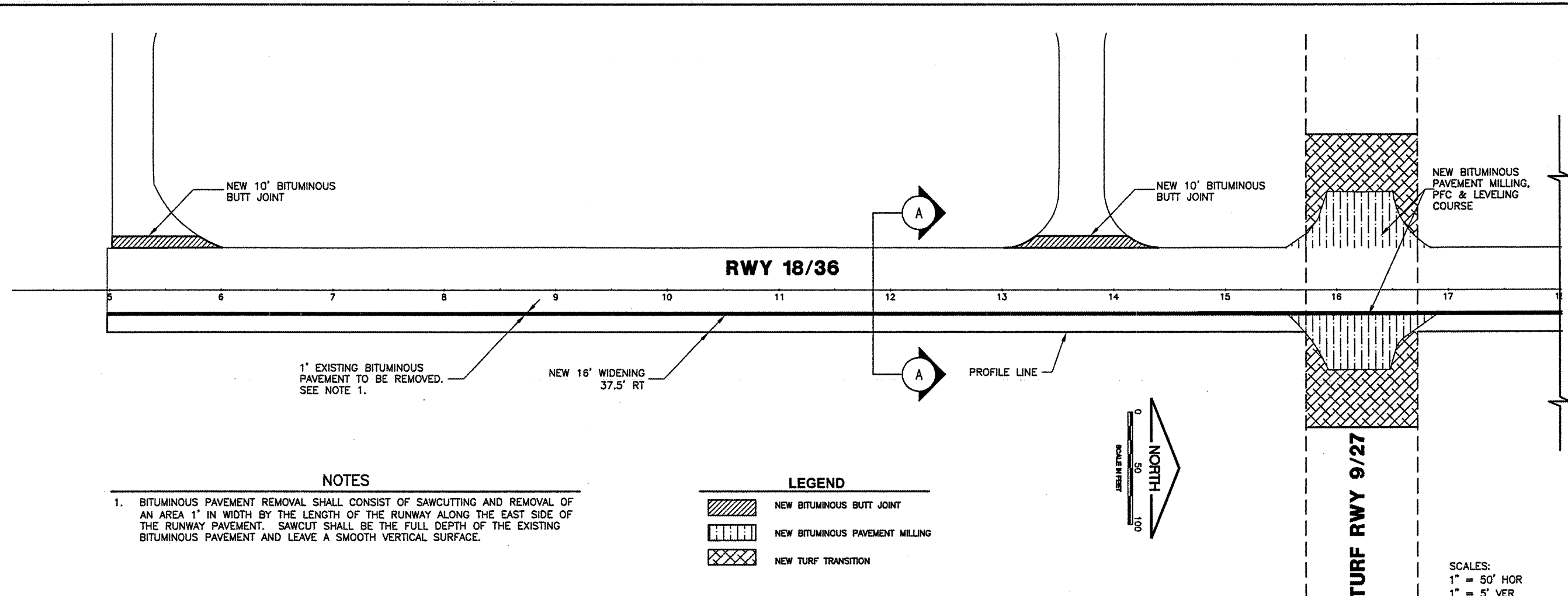
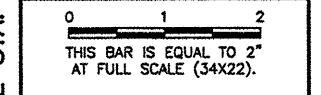


K:\Sparta\AP\0641203 Widen Runway\Draw\EGPT\Plot
 FILE: RCp01001.dwg
 UPDATE BY: Dave Allen
 PLOT DATE: 1/9/2009 9:32 AM
 rcprf001
 BASE_EXISTOPO
 BASE_PROPELEC
 BASE_PROPGEO
 BASE_PROPSITE

REVISIONS		
NUMBER	BY	DATE



1' EXISTING BITUMINOUS PAVEMENT TO BE REMOVED. SEE NOTE 1.

NEW 16' WIDENING 37.5' RT

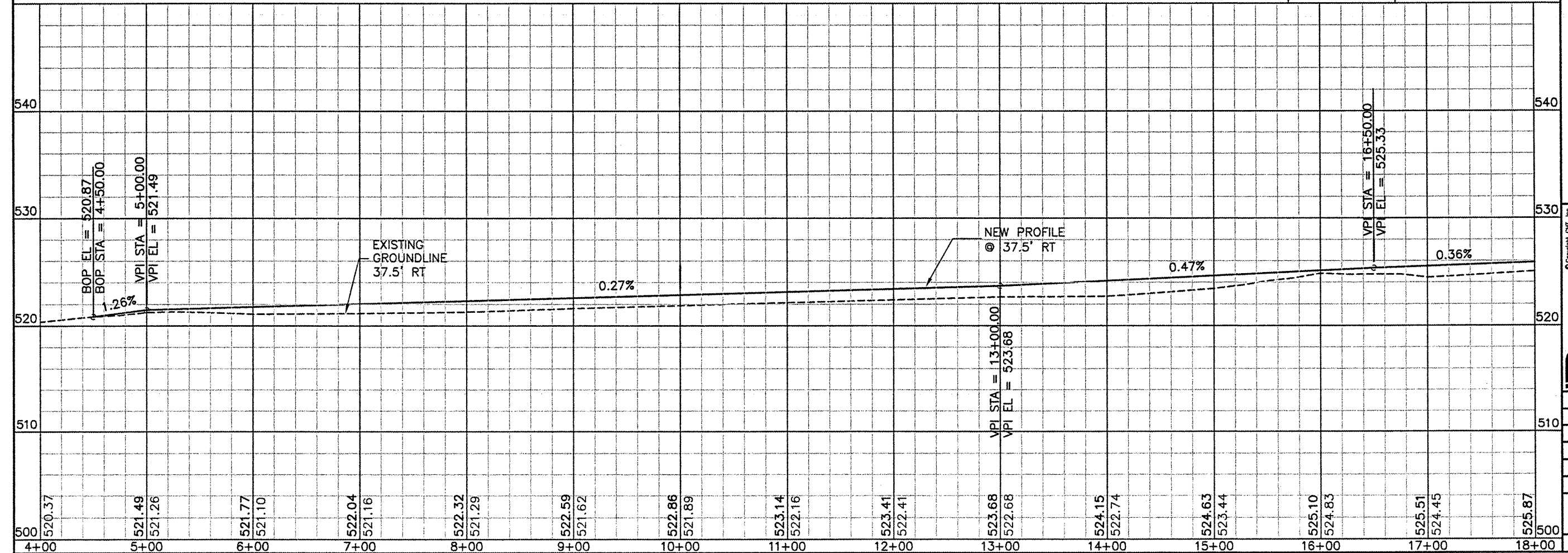
NOTES

1. BITUMINOUS PAVEMENT REMOVAL SHALL CONSIST OF SAWCUTTING AND REMOVAL OF AN AREA 1' IN WIDTH BY THE LENGTH OF THE RUNWAY ALONG THE EAST SIDE OF THE RUNWAY PAVEMENT. SAWCUT SHALL BE THE FULL DEPTH OF THE EXISTING BITUMINOUS PAVEMENT AND LEAVE A SMOOTH VERTICAL SURFACE.

LEGEND

- NEW BITUMINOUS BUTT JOINT
- NEW BITUMINOUS PAVEMENT MILLING
- NEW TURF TRANSITION

SCALES:
 1" = 50' HOR
 1" = 5' VER



SPARTA COMMUNITY AIRPORT
 HUNTER FIELD
 SPARTA, ILLINOIS

WIDEN AND OVERLAY RUNWAY 18/36
 WIDENING EDGE
 PLAN & PROFILE 1
 STA. 4+00 TO STA. 18+00

© Copyright CMT, Inc.
CMT
 CRAWFORD, MURPHY & TILLY, INC.
 CONSULTING ENGINEERS
 License No. 184-000613

DESIGN BY:	KLB
DRAWN BY:	CMT
CHECKED BY:	JEF
APPROVED BY:	JEF
DATE:	12/31/2008
JOB No:	0641203
IL PROJ. NO. SAR-3652	
AIP PROJ. NO. 3-17-0094-89	
SHEET 05 OF 28 SHEETS	