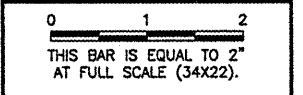


**REIL ELEVATION**  
N.T.S.

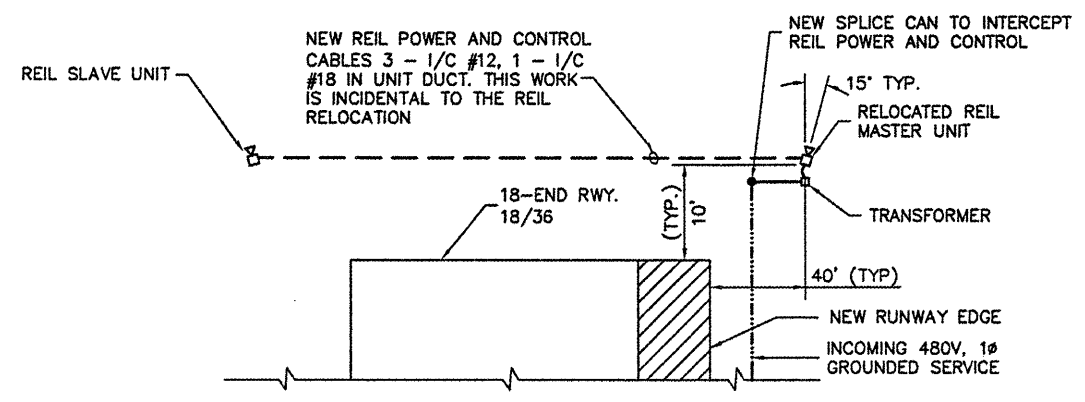
**REIL ELEVATION NOMENCLATURE**

- ① RELOCATED REIL FLASH HEAD
- ② RELOCATED REIL POWER SUPPLY.
- ③ L-867 SPLICE CAN, 12" DIAMETER x 12" DEEP, WITH BLANK COVER. (REQUIRED AT REIL MASTER LOCATION ONLY.)
- ④ 2" PIPE SUPPORT WITH FRANGIBLE COUPLING AND FLOOR FLANGE. CAP SUPPORT.
- ⑤ AT REIL MASTER LOCATION:  
 - THREE #12 L-824, 600V CABLES (120/240V POWER), ONE #12 GROUND IN UNIT DUCT TO STEP-DOWN TRANSFORMER. INSTALL UNIT DUCT IN GRS CONDUIT WITHIN LIMITS OF FOUNDATION.  
 AT REIL SLAVE LOCATION:  
 - 3 - 1/C #12, 1 - 1/C #18 IN UNIT DUCT FROM REIL MASTER LOCATION. INSTALL UNIT DUCT IN GRS CONDUIT WITHIN LIMITS OF FOUNDATION.
- ⑥ AT REIL MASTER LOCATION:  
 - REIL MASTER FLASH HEAD WIRING PER MANUFACTURER AND CONDUCTORS PER MANUFACTURER TO REIL SLAVE LOCATION IN GRS CONDUIT.  
 AT REIL SLAVE LOCATION:  
 - REIL SLAVE FLASH HEAD WIRING PER MANUFACTURER IN GRS CONDUIT. (L-867 SPLICE CAN NOT REQUIRED.)
- ⑦ REIL FLASH HEAD WIRING PER MANUFACTURER IN GRS CONDUIT.
- ⑧ AT REIL MASTER LOCATION:  
 - CONDUCTORS PER MANUFACTURER TO REIL SLAVE LOCATION IN UNIT DUCT. INSTALL UNIT DUCT IN GRS CONDUIT WITHIN LIMITS OF FOUNDATION.
- ⑨ ITEM 610 CONCRETE FOUNDATION, 5'-0" LONG BY 2'-0" WIDE BY 4'-0" DEEP.

REVISIONS		
NUMBER	BY	DATE



SPARTA COMMUNITY AIRPORT  
 HUNTER FIELD  
 SPARTA, ILLINOIS  
 WIDEN AND OVERLAY RUNWAY 18/36  
 RELOCATED REIL DETAILS



**REIL-18 INSTALLATION PLAN VIEW**  
N.T.S.

**RELOCATED REIL NOTES**

1. REIL-18: 2-1/C #6, L-824, TY. C, 600V CABLES, 1 #8 GND. IN UNIT-DUCT.
2. GRS CONDUIT IN DIRECT CONTACT WITH THE EARTH SHALL RECEIVE 1 COAT 8 DRY MILS OF 46-413 TNEC-TAR COAL TAR EPOXY AS MANUFACTURED BY TNEC CO., OR EQUAL.
3. ALL FLEX AND GRS CONDUIT, PVC CONDUIT, UNIT-DUCT, GROUND ROD, TRANSFORMER, STRUT FRAMING, SUPPORTS, FOUNDATION, L-867 BASES, WIRING AND MISCELLANEOUS MATERIALS, LABOR AND EQUIPMENT NEEDED TO PROVIDE POWER AND CONTROL FROM PAPI PCU TO LIGHT BOXES OR REIL MASTER TO SLAVE UNIT SHALL BE CONSIDERED INCIDENTAL TO THE PAPI OR REIL INSTALLATION. SEE SPEC ITEM 125. INCOMING 480V, L-824, TY. C, 600V CABLES WITH GROUND IN UNIT-DUCT SHALL BE MEASURED AND PAID FOR UNDER APPLICABLE PAY ITEM IN ITEM 108 OF SPECIFICATIONS.

© Copyright CMT, Inc.  
 CMT  
 CRAWFORD MURPHY & TILLY, INC.  
 CONSULTING ENGINEERS  
 License No. BH-000618

DESIGN BY:	TM
DRAWN BY:	CMT
CHECKED BY:	JEF
APPROVED BY:	JEF
DATE:	12/31/2008
JOB No:	0641203

IL PROJ. NO. SAR-3652  
 AIP PROJ. NO. 3-17-0094-B9