

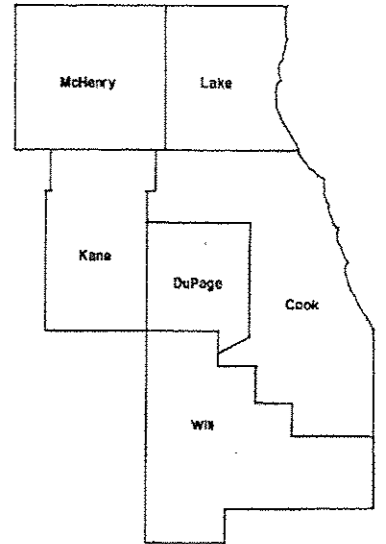
03-06-2015 LETTING ITEM 010

ROUTE	SECTION	COUNTY	TOTAL SHEETS	SHEET NUMBER
VARIOUS	2014-054LS	VARIOUS	19	1

STATE OF ILLINOIS  
DEPARTMENT OF TRANSPORTATION  
DIVISION OF HIGHWAYS  
DISTRICT ONE  
**PROPOSED HIGHWAY PLANS**

ROUTE: VARIOUS  
SECTION: 2014-054LS  
LANDSCAPE REPAIR & RENOVATION  
VARIOUS COUNTIES  
JOB NO.: C-91-453-14

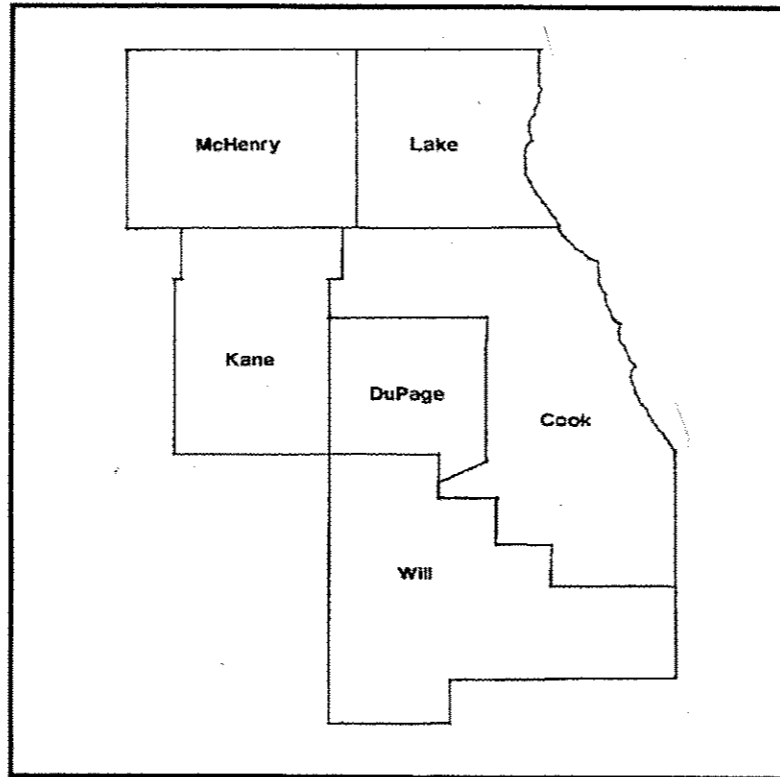
D-91-453-14  
CONTRACT 60Y70



LOCATION OF IMPROVEMENT INDICATED THUS:

FOR INDEX OF SHEETS SEE PAGE 2

**IMPROVEMENTS ARE AT  
VARIOUS LOCATIONS WITHIN  
DISTRICT ONE**



STATE OF ILLINOIS  
DEPARTMENT OF TRANSPORTATION  
DIVISION OF HIGHWAYS  
SUBMITTED: August 22 2014  
John Fertmann, PE  
DEPUTY DIRECTOR OF HIGHWAYS, REGION ENGINEER  
Oct 17 2014  
John D. Baranzelli, PE  
acting ENGINEER OF DESIGN AND ENVIRONMENT  
Oct 17 2014  
Omer Osman, PE  
DIRECTOR OF HIGHWAYS, CHIEF ENGINEER

**PRINTED BY THE AUTHORITY  
OF THE STATE OF ILLINOIS**

J.U.L.I.E.: JOINT UTILITY LOCATION  
INFORMATION FOR EXCAVATION  
(800) 892-0123

DISTRICT ONE BUREAU OF MAINTENANCE: J. STUMPNER  
MAINTENANCE LANDSCAPE DESIGNER: R. WANNER / M. DEL ROSARIO (847) 705-4171

CONTRACT 60Y70

ROUTE	SECTION	COUNTY	TOTAL SHEETS	SHEET NUMBER
VARIOUS	2014-054LS	VARIOUS	19	2

CONTRACT 60Y70

**INDEX OF SHEETS**

- 1 TITLE SHEET
- 2 INDEX OF SHEETS, STATE STANDARDS AND GENERAL NOTES
- 3-4 SUMMARY OF QUANTITIES
- 5 CALENDAR OF CONSTRUCTION
- 6 WORK ORDER
- 7 LOCATION SUMMARY
- 8-18 LAYOUT PLAN SHEETS
- 19 TRAFFIC DETAILS

**STATE STANDARDS**

701001-02	701006-05
701101-04	701106-02
701501-06	701601-09
701701-09	701901-04

**GENERAL NOTES**

THE CONTRACTOR SHALL ORDER PLANT MATERIAL AND SUBMIT COMPLETED PLANT INSPECTION SHEETS TO IDOT BY JANUARY 31, 2015 TO ASSURE PLANT AVAILABILITY FOR THE SPRING PLANTING SEASON.

FOR ARTERIALS THE CONTRACTOR SHALL CONTACT THE DISTRICT ONE TRAFFIC CONTROL SUPERVISOR AT (847) 705-4470 A MINIMUM OF 72 HOURS IN ADVANCE OF BEGINNING WORK.

BEFORE STARTING ANY EXCAVATION THE CONTRACTOR SHALL CALL THE STATE ELECTRICAL MAINTENANCE CONTRACTOR AT (773) 287-7600, EXTENSION 601, FOR FIELD LOCATIONS OF BURIED CABLE. THE CONTRACTOR SHALL ALSO CALL "JULIE" AT 800-892-0123 AND C.U.A.N. (CHICAGO UTILITY ALERT NETWORK) AT 312-744-7000 FOR FIELD LOCATIONS OF BURIED ELECTRICAL, TELEPHONE, AND GAS FACILITIES. (48 HOUR NOTIFICATION IS REQUIRED).

WHENEVER, DURING CONSTRUCTION OPERATIONS, ANY LOOSE MATERIAL IS DEPOSITED IN THE FLOW LINE OF DRAINAGE STRUCTURES SUCH THAT THE NATURAL FLOW OF WATER IS OBSTRUCTED, IT SHALL BE REMOVED AT THE CLOSE OF EACH WORKING DAY. AT THE CONCLUSION OF CONSTRUCTION OPERATIONS, ALL UTILITY STRUCTURES SHALL BE FREE FROM DIRT AND DEBRIS. THE WORK SPECIFIED ABOVE WILL NOT BE PAID FOR SEPARATELY BUT SHALL BE INCLUDED IN THE COST FOR CATCH BASINS AND MANHOLES TO BE ADJUSTED IN THIS CONTRACT.

THE CONTRACTOR SHALL ADHERE TO LIMITS OF RESTORATION SHOWN. AREAS OUTSIDE THESE LIMITS THAT ARE DAMAGED OR DISTURBED BY THE CONTRACTOR SHALL BE RESTORED AT THE CONTRACTOR'S OWN EXPENSE. NO ADDITIONAL COMPENSATION WILL BE ALLOWED.

PAY ITEMS IN THE SUMMARY OF QUANTITIES HAVE BEEN ESTIMATED, IF, IN THE ENGINEER'S OPINION, THE WORK IS NOT REQUIRED, THE ITEM WILL BE DEDUCTED FROM THE CONTRACT AND NO ADDITIONAL COMPENSATION TO THE CONTRACTOR WILL BE ALLOWED.

ANY WORK WITHIN A LANDSCAPED MEDIAN REQUIRES A LANE CLOSURE AND USE OF AN ARROW BOARD PER IDOT SPECIFICATIONS.

WORK PLANS WILL BE GIVEN AT THE PRECONSTRUCTION MEETING.

**ILLINOIS DEPARTMENT OF TRANSPORTATION**  
**LANDSCAPE REPAIR**  
**INDEX OF SHEETS**  
**GENERAL NOTES**  
**STATE STANDARDS**

ROUTE	SECTION	COUNTY	TOTAL SHEETS	SHEET NUMBER
VARIOUS	2014-054LS	VARIOUS	19	3

PAY ITEM	DESCRIPTION	UNIT	URBAN 0031 100% STATE	
			TOTAL	CONTRACT MAINT FUND
X2010310	TREE REMOVAL (SPECIAL)	EACH	15	15
20101700	SUPPLEMENTAL WATERING	UNIT	80	80
21101605	TOPSOIL FURNISH AND PLACE, 2"	SQ YD	5445	5445
21101615	TOPSOIL FURNISH AND PLACE, 4"	SQ YD	1815	1815
25000210	SEEDING, CLASS 2A	ACRE	1.5	1.5
25000400	NITROGEN FERTILIZER NUTRIENT	POUND	165	165
25000500	PHOSPHORUS FERTILIZER NUTRIENT	POUND	120	120
25000600	POTASSIUM FERTILIZER NUTRIENT	POUND	165	165
25003210	INTERSEEDING, CLASS 2A	ACRE	1.0	1.0
25100630	EROSION CONTROL BLANKET	SQ YD	7260	7260
25200110	SODDING, SALT TOLERANT	SQ YD	250	250
67100100	MOBILIZATION	L SUM	1	1
A2000116	TREE, ACER X FREEMANII AUTUMN BLAZE (AUTUMN BLAZE FREEMAN MAPLE), 2" CALIPER, BALLED AND BURLAPPED	EACH	21	21
A2002816	TREE, CATALPA SPECIOSA (NORTHERN CATALPA), 2" CALIPER, BALLED AND BURLAPPED	EACH	10	10
A2002916	TREE, CELTIS OCCIDENTALIS (COMMON HACKBERRY), 2" CALIPER, BALLED AND BURLAPPED	EACH	60	60
A2004716	TREE, GLEDITSIA TRIACANTHOS INERMIS SHADEMASTER (SHADEMASTER THORNLESS COMMON HONEYLOCUST), 2" CALIPER, BALLED AND BURLAPPED	EACH	6	6
A2005016	TREE, GYMNOCLADUS DIOICUS (KENTUCKY COFFEETREE), 2" CALIPER, BALLED AND BURLAPPED	EACH	60	60
A2006516	TREE, QUERCUS BICOLOR (SWAMP WHITE OAK), 2" CALIPER, BALLED AND BURLAPPED	EACH	54	54
A2008468	TREE, ULMUS AMERICANA PRINCETON (PRINCETON AMERICAN ELM), 2" CALIPER, BALLED AND BURLAPPED	EACH	34	34
B2001616	TREE, CRATAEGUS CRUSGALLI INERMIS (THORNLESS COCKSPUR HAWTHORN), 2" CALIPER, TREE FORM, BALLED AND BURLAPPED	EACH	14	14
B2001664	TREE, CRATAEGUS CRUSGALLI INERMIS (THORNLESS COCKSPUR HAWTHORN), 5' HEIGHT, SHRUB FORM, BALLED AND BURLAPPED	EACH	1	1

CONTRACT 60Y70

ILLINOIS DEPARTMENT OF TRANSPORTATION  
  
SUMMARY OF QUANTITIES

	<b>ROUTE</b>	<b>SECTION</b>	<b>COUNTY</b>	<b>TOTAL SHEETS</b>	<b>SHEET NUMBER</b>
	VARIOUS	2014-054LS	VARIOUS	19	4

*URBAN 0031*  
*100% STATE*

CONTRACT 60Y70

PAY ITEM	DESCRIPTION	UNIT	TOTAL	CONTRACT MAINT FUND
B2006216	TREE, SYRINGA RETICULATA (JAPANESE TREE LILAC), 2" CALIPER, TREE FORM, BALLED AND BURLAPPED	EACH	7	7
D2002460	EVERGREEN, PINUS FLEXILIS VANDERWOLF'S PYRAMID (VANDERWOLF'S PYRAMID LIMBER PINE), 5' HEIGHT, BALLED AND BURLAPPED	EACH	33	33

2

ILLINOIS DEPARTMENT OF TRANSPORTATION

SUMMARY OF QUANTITIES

ROUTE	SECTION	COUNTY	TOTAL SHEETS	SHEET NUMBER
VARIOUS	2014-054LS	VARIOUS	19	5

CONTRACT 60Y70

60Y70 - SCHEDULE OF LANDSCAPE CONSTRUCTION AND ESTABLISHMENT WORK

Item	2014		2015										2016															
	November	December	January	February	March	April	May	June	July	August	September	October	November	December	January	February	March	April	May	June	July	August	September	October	November			
	PHASE I							PHASE II																				
<b>Plant Material Inspections</b>																												
Submit completed plant inspection forms to IDOT by Jan 31 for spring planting season & Sept 30 for fall planting season	Submit completed plant inspection sheets to IDOT for SPRING plantings	IDOT inspects SPRING plant material at various nurseries					Submit completed plant inspection sheets to IDOT for FALL 2015 replacement plantings (if necessary)					Submit completed plant inspection sheets to IDOT for SPRING 2016 replacement plantings (if necessary)					IDOT inspects SPRING plant material at various nurseries											
<b>Tree Planting</b>																												
Spring plantings of balled and burlapped: March 15 - May 30					spring planting						Period of Establishment Inspection by IDOT						fall (ONLY) replacement plantings		spring planting - replacements & clean-up work									
Fall (ONLY) plantings of balled and burlapped: Nov 1 - Nov 30																												
Period of Establishment Plant Care: Weed & Water (included in cost of tree installation)			2	2	3	3	3	3	2	2																		
<b>Supplemental Tree Care</b>																												
Supplemental Watering																												
<b>Turf Restoration</b>																												
Seeding, Class 2A Spring: March 15 to June 1 Fall: August 1 to Sept 15 Dormant: Sept 16 to March 15					spring seeding period						fall seeding period		dormant seeding period						spring seeding period								fall seeding period	
Tree Removal <6" and Turf Restoration					spring seeding period						fall seeding period		dormant seeding period						spring seeding period								fall seeding period	

ILLINOIS DEPARTMENT OF TRANSPORTATION  
CALENDAR OF CONSTRUCTION

ROUTE	SECTION	COUNTY	TOTAL SHEETS	SHEET NUMBER
VARIOUS	2014-054LS	VARIOUS	19	6

CONTRACT 60Y70



LANDSCAPE REPAIR  
WORK ORDER  
CONTRACT 60Y70

WORK ORDER NUMBER	PAGE: _____ OF _____
-------------------	----------------------

MARKED ROUTE	LOCATION	COUNTY	MUNICIPALITY

WORK ORDER SUMMARY		
PAY CODE	PAY ITEM	QUANTITY

SPECIAL INSTRUCTIONS/ CALCULATIONS	

AUTHORIZATION OF WORK ORDER	CERTIFICATION OF COMPLETED WORK
IDOT Resident Engineer/Technician Signature	Contractor Signature
Date Work Order Issued Contractor Initials	Date Work Order Completed

OFFICE USE ONLY	INSPECTION AND ACCEPTANCE OF COMPLETED WORK
Prepared by: INITIAL(S) DATE	Inspector Signature
Measured in place by: _____	
Calculated by: _____	
Checked by: _____	
Date Work Ordered Inspected and Accepted	
This is to certify that the work has been completed in conformance	

ILLINOIS DEPARTMENT OF TRANSPORTATION  
  
LANDSCAPE REPAIR LOCATION AND  
LAYOUT PLAN

ROUTE	SECTION	COUNTY	TOTAL SHEETS	SHEET NUMBER
VARIOUS	2014-054LS	VARIOUS	19	7

CONTRACT 60Y70

**LOCATION SUMMARY**

COUNTY	CITY/TOWN	SHEET #	GENERAL LOCATION
LAKE	WAUKEGAN	8	US 41 AT WASHINGTON STREET
COOK	MORTON GROVE, SKOKIE	9	I-94 (EDENS EXPRESSWAY) VARIOUS LOCATIONS
COOK	SOUTH BARRINGTON	10	IL 62: EASTINGS WAY TO PENNY ROAD
COOK	WILLOW SPRINGS (UNINCORPORATED)	11	95 <sup>TH</sup> STREET AT 104 <sup>TH</sup> (FLAVIN ROAD), COOK COUNTY FOREST PRESERVE
COOK	PALOS HILLS	12	111 <sup>TH</sup> STREET: DEERPATH LANE TO IL 7 (SOUTHWEST HIGHWAY)
COOK	PARK FOREST	13	WESTERN AVENUE: SAUK TRAIL TO 26 <sup>TH</sup> STREET
WILL	FRANKFORT	14	US 30 (LINCOLN HIGHWAY): S. ELSNER ROAD TO IL 43 (HARLEM AVENUE)
DUPAGE	WHEATON	15	IL 56 (BUTTERFIELD ROAD): MADISON STREET TO S. NAPERVILLE ROAD
DUPAGE	WARRENVILLE	16	IL 56 (BUTTERFIELD ROAD): EAST OF EJ&E RAILROAD TO EAST OF WINFIELD ROAD
DUPAGE	CAROL STREAM	17	23W634 NORTH AVENUE

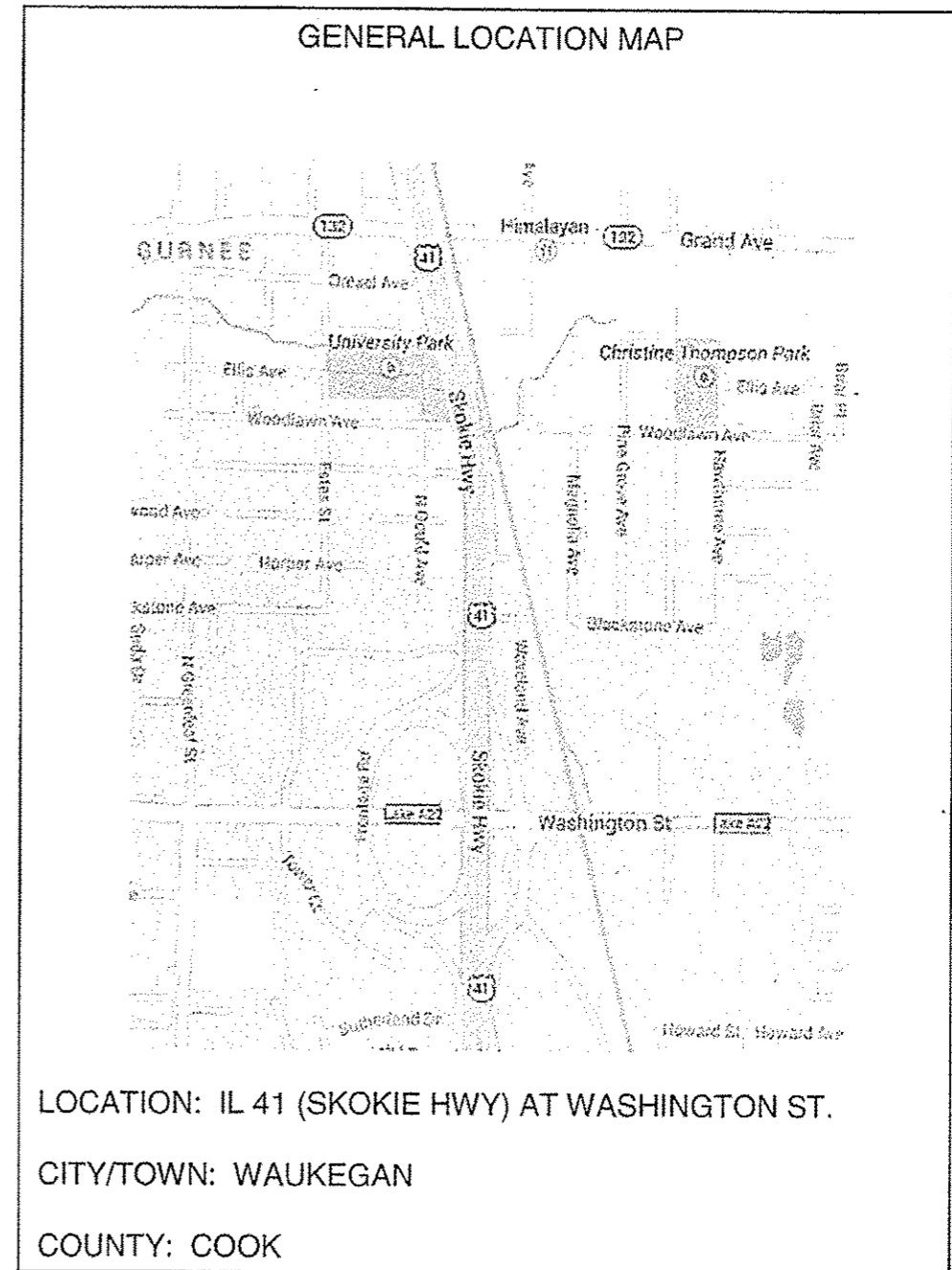
ILLINOIS DEPARTMENT OF TRANSPORTATION

LOCATION SUMMARY

ROUTE	SECTION	COUNTY	TOTAL SHEETS	SHEET NUMBER
VARIOUS	2014-054LS	VARIOUS	19	8

CONTRACT 60Y70

DESCRIPTION	<u>SCHEDULE OF LANDSCAPE ITEMS</u>	TOTAL QTY/UNIT
<b>NITROGEN FERTILIZER NUTRIENT</b>		45 POUND
<b>POTASSIUM FERTILIZER NUTRIENT</b>		45 POUND
<b>SEEDING, CLASS 2A</b>		0.5 ACRE
<b>EROSION CONTROL BLANKET</b>		2420 SQ YD



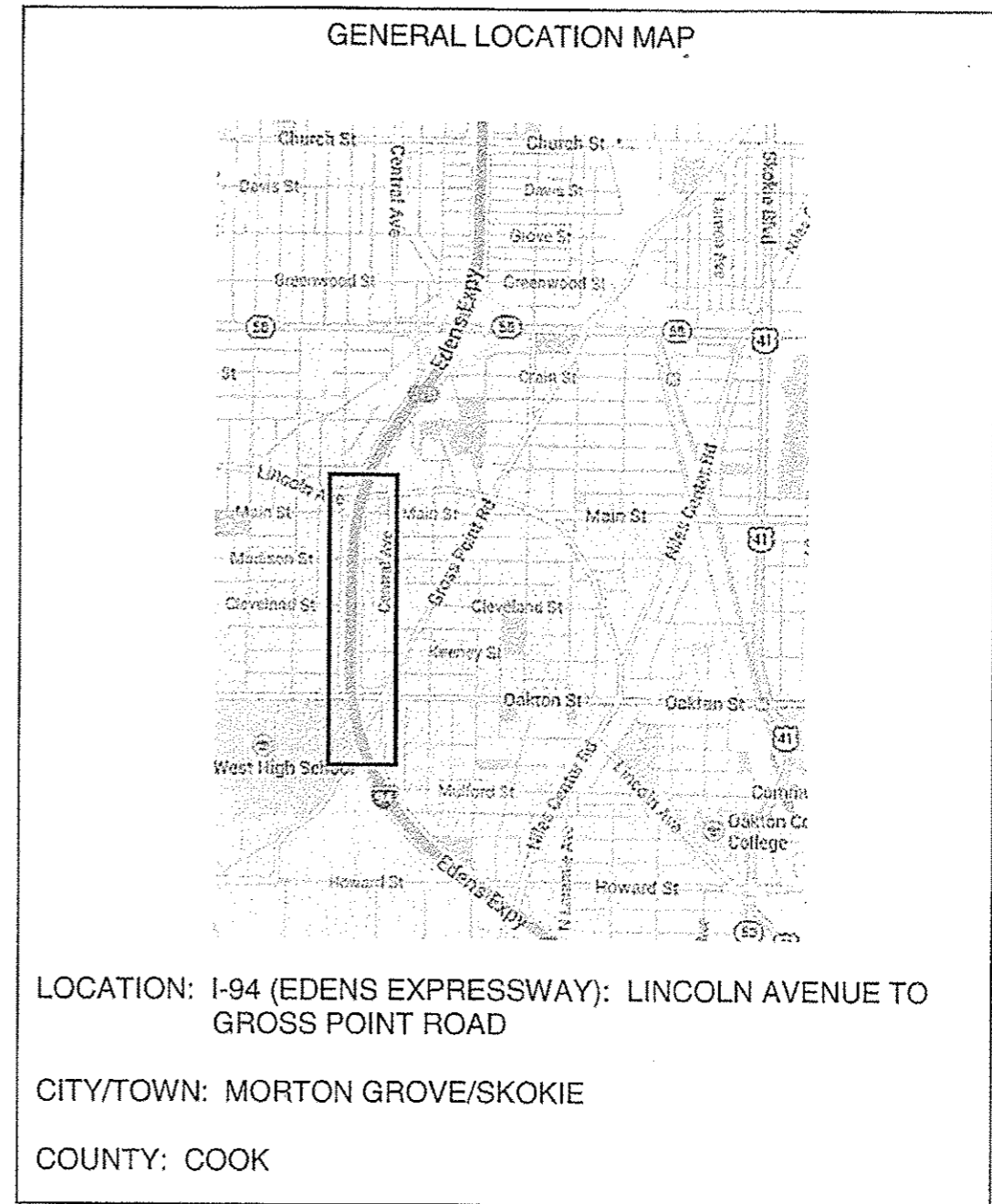
ILLINOIS DEPARTMENT OF TRANSPORTATION  
 LANDSCAPE REPAIR LOCATION AND  
 LAYOUT PLAN



ROUTE	SECTION	COUNTY	TOTAL SHEETS	SHEET NUMBER
VARIOUS	2014-054LS	VARIOUS	19	9

CONTRACT 60Y70

DESCRIPTION	<u>SCHEDULE OF LANDSCAPE ITEMS</u>	TOTAL QTY/UNIT
<b>CELTIS OCCIDENTALIS</b>		15 EA
<b>GYMNOCLADUS DIOICUS</b>		10 EA
<b>ULMUS AMERICANA 'PRINCETON'</b>		10 EA
<b>PINUS FLEXILIS VANDERWOLF'S PYRAMID</b>		20 EA



ILLINOIS DEPARTMENT OF TRANSPORTATION

LANDSCAPE REPAIR LOCATION AND LAYOUT PLAN

ROUTE	SECTION	COUNTY	TOTAL SHEETS	SHEET NUMBER
VARIOUS	2014-054LS	VARIOUS	19	10

CONTRACT 60Y70

DESCRIPTION	SCHEDULE OF LANDSCAPE ITEMS	TOTAL QTY/UNIT
<b>CELTIS OCCIDENTALIS</b>		8 EA
<b>QUERCUS BICOLOR</b>		8 EA
<b>ULMUS AMERICANA 'PRINCETON'</b>		8 EA
<b>PINUS FLEXILIS VANDERWOLF'S PYRAMID</b>		11 EA

**GENERAL LOCATION MAP**

LOCATION: IL 62 (ALGONQUIN ROAD): EASTINGS WAY TO EAST PENNY ROAD  
 CITY/TOWN: SOUTH BARRINGTON  
 COUNTY: COOK

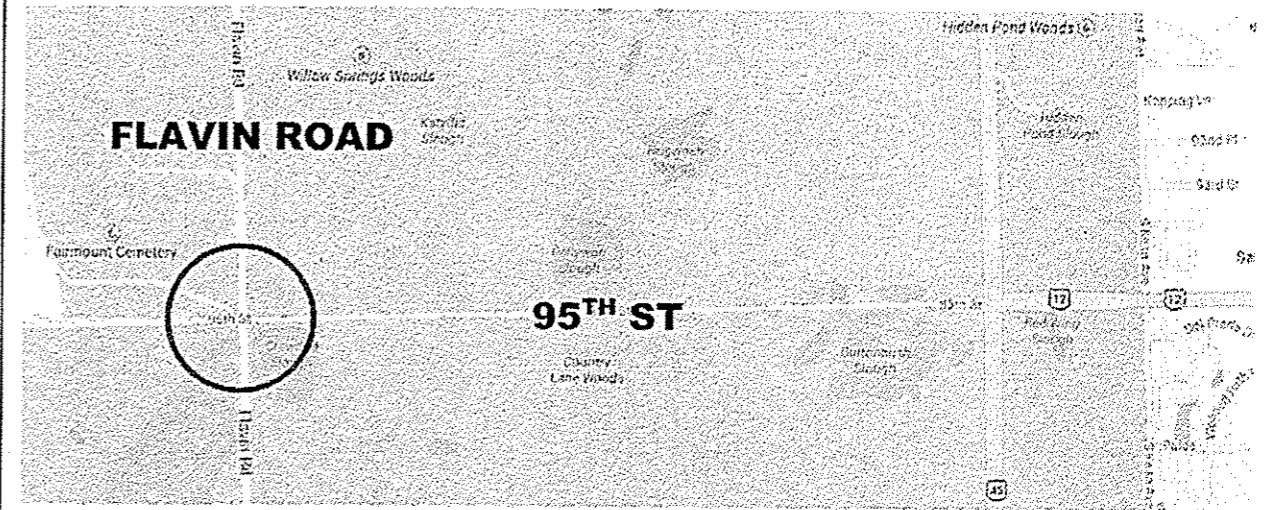
ILLINOIS DEPARTMENT OF TRANSPORTATION  
 LANDSCAPE REPAIR LOCATION AND  
 LAYOUT PLAN

ROUTE	SECTION	COUNTY	TOTAL SHEETS	SHEET NUMBER
VARIOUS	2014-054LS	VARIOUS	19	11

CONTRACT 60Y70

DESCRIPTION	SCHEDULE OF LANDSCAPE ITEMS	TOTAL QTY/UNIT
<b>QUERCUS BICOLOR</b>		3 EA

GENERAL LOCATION MAP



LOCATION: 95<sup>TH</sup> ST AT 104<sup>TH</sup> (FLAVIN RD.), COOK COUNTY FOREST PRESERVE  
 CITY/TOWN: WILLOW SPRINGS (UNINCORPORATED)  
 COUNTY: COOK

ILLINOIS DEPARTMENT OF TRANSPORTATION  
 LANDSCAPE REPAIR LOCATION AND  
 LAYOUT PLAN

ROUTE	SECTION	COUNTY	TOTAL SHEETS	SHEET NUMBER
VARIOUS	2014-054LS	VARIOUS	19	12

CONTRACT 60Y70

DESCRIPTION      SCHEDULE OF LANDSCAPE ITEMS      TOTAL QTY/UNIT

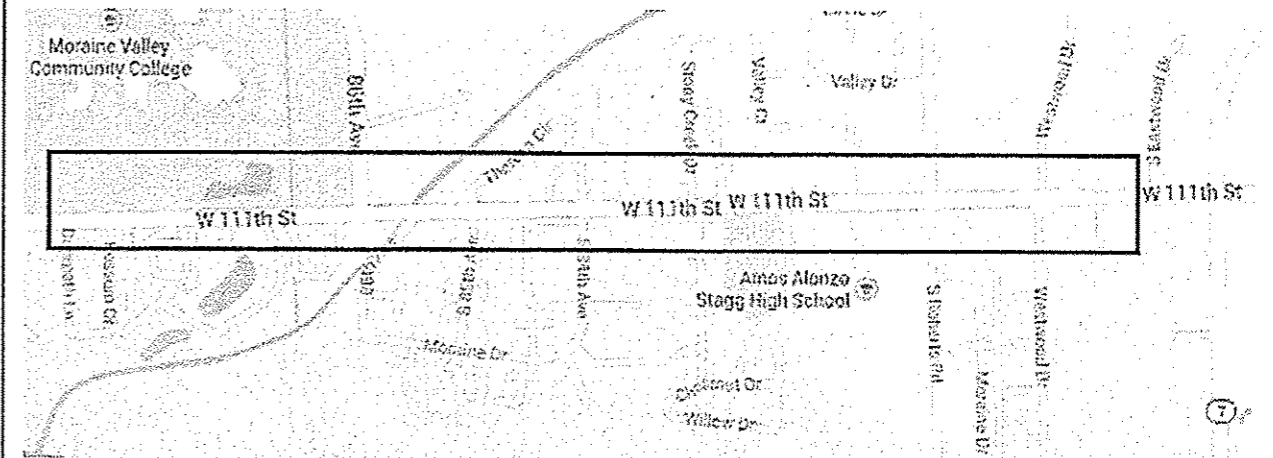
**GYMNOCLADUS DIOICUS**      3 EA

**QUERCUS BICOLOR**      1 EA

**CRATAEGUS CRUSGALLI INERMIS, 2" CAL.**      9 EA

**SYRINGA RETICULATA**      7 EA

GENERAL LOCATION MAP



LOCATION: 111<sup>TH</sup> ST.: DEERPATH LANE TO IL 7 (SOUTHWEST HIGHWAY)

CITY/TOWN: PALOS HILLS

COUNTY: COOK

ILLINOIS DEPARTMENT OF TRANSPORTATION

LANDSCAPE REPAIR LOCATION AND  
LAYOUT PLAN

ROUTE	SECTION	COUNTY	TOTAL SHEETS	SHEET NUMBER
VARIOUS	2014-054LS	VARIOUS	19	13

CONTRACT 60Y70

DESCRIPTION	SCHEDULE OF LANDSCAPE ITEMS	TOTAL QTY/UNIT
<b>CATALPA SPECIOSA</b>		2 EA
<b>CELTIS OCCIDENTALIS</b>		9 EA
<b>GYMNOCLADUS DIOICUS</b>		9 EA
<b>QUERCUS BICOLOR</b>		4 EA
<b>ULMUS AMERICANA 'PRINCETON'</b>		2 EA

**GENERAL LOCATION MAP**

LOCATION: WESTERN AVENUE: SAUK TRAIL TO 26<sup>TH</sup> STREET  
CITY/TOWN: PARK FOREST  
COUNTY: COOK

ILLINOIS DEPARTMENT OF TRANSPORTATION  
LANDSCAPE REPAIR LOCATION AND  
LAYOUT PLAN

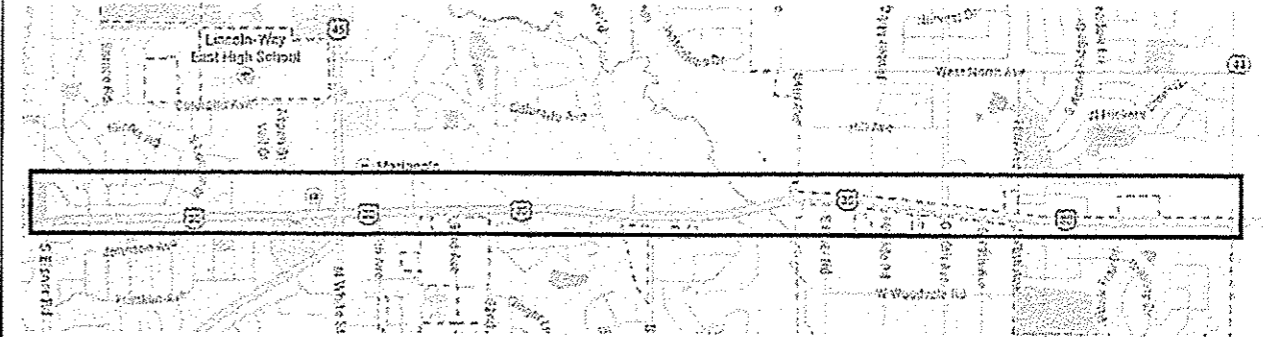
ROUTE	SECTION	COUNTY	TOTAL SHEETS	SHEET NUMBER
VARIOUS	2014-054LS	VARIOUS	19	14

CONTRACT 60Y70

DESCRIPTION      SCHEDULE OF LANDSCAPE ITEMS      TOTAL QTY/UNIT

<b>ACER X FREEMANII 'AUTUMN BLAZE'</b>	3 EA
<b>GLEDITSIA TRIACANTHOS VAR. INERMIS 'SHADEMASTER'</b>	1 EA
<b>QUERCUS BICOLOR</b>	1 EA
<b>CRATAEGUS CRUSGALLI INERMIS, 2" CAL.</b>	5 EA
<b>PINUS FLEXILIS VANDERWOLF'S PYRAMID</b>	2 EA

GENERAL LOCATION MAP



LOCATION: US 30 (LINCOLN HIGHWAY): S. ELSNER ROAD TO IL 43

CITY/TOWN: FRANKFORT

COUNTY: WILL

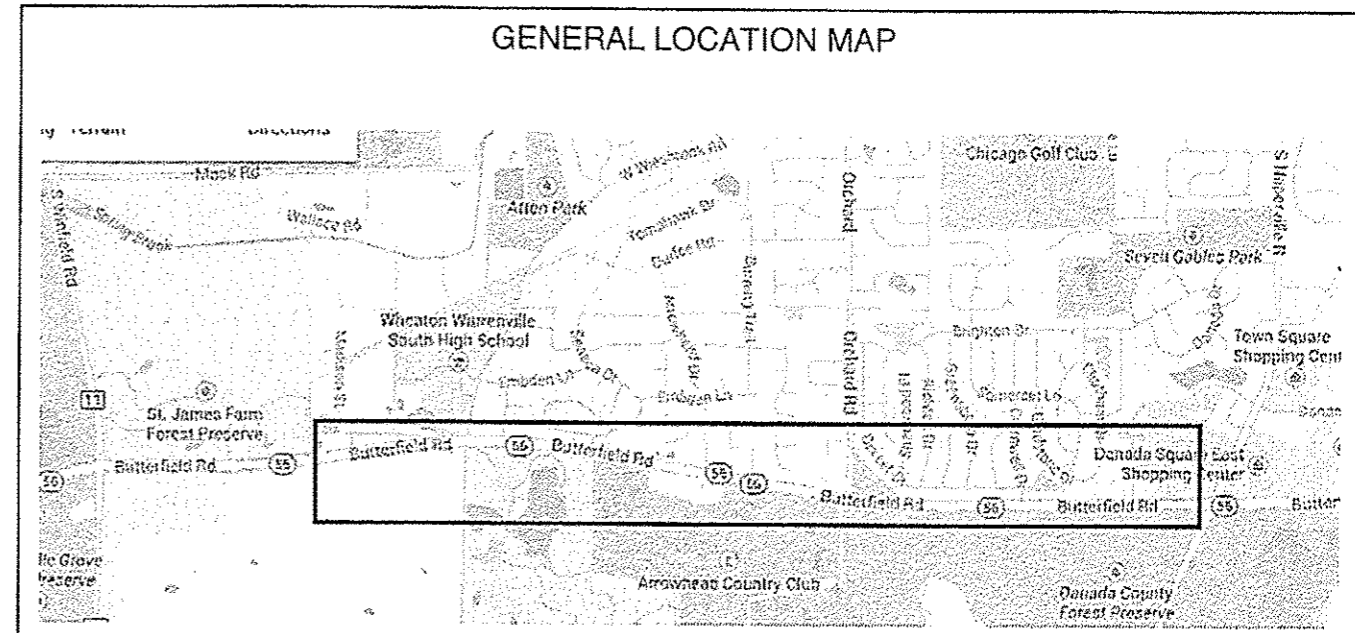
ILLINOIS DEPARTMENT OF TRANSPORTATION

LANDSCAPE REPAIR LOCATION AND  
LAYOUT PLAN

ROUTE	SECTION	COUNTY	TOTAL SHEETS	SHEET NUMBER
VARIOUS	2014-054LS	VARIOUS	19	15

CONTRACT 60Y70

DESCRIPTION	SCHEDULE OF LANDSCAPE ITEMS	TOTAL QTY/UNIT
<b>ACER X FREEMANII 'AUTUMN BLAZE'</b>		5 EA
<b>GLEDITSIA TRIACANTHOS VAR. INERMIS 'SHADEMASTER'</b>		2 EA
<b>GYMNOCLADUS DIOICUS</b>		1 EA
<b>QUERCUS BICOLOR</b>		4 EA
<b>ULMUS AMERICANA 'PRINCETON'</b>		1 EA
<b>TREE REMOVAL &lt;6" &amp; TURF RESTORATION</b>		3 EA



LOCATION: IL 56 (BUTTERFIELD ROAD): MADISON ST. TO S. NAPERVILLE RD.  
 CITY/TOWN: WHEATON  
 COUNTY: DUPAGE

ILLINOIS DEPARTMENT OF TRANSPORTATION  
 LANDSCAPE REPAIR LOCATION AND LAYOUT PLAN

ROUTE	SECTION	COUNTY	TOTAL SHEETS	SHEET NUMBER
VARIOUS	2014-054LS	VARIOUS	19	16

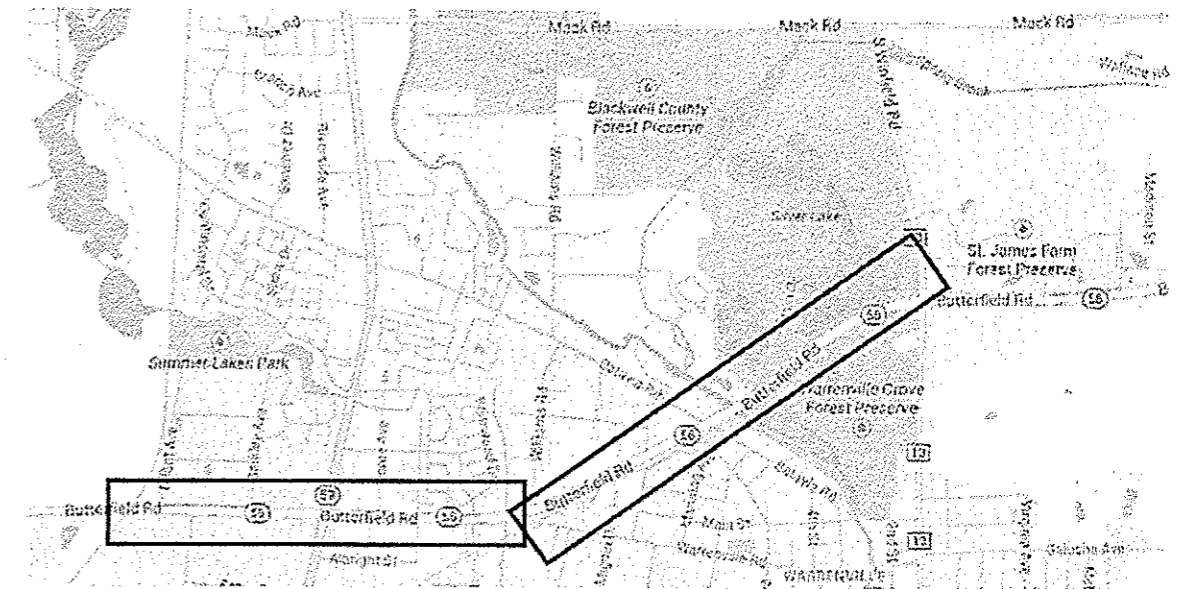
CONTRACT 60Y70

**SCHEDULE OF LANDSCAPE ITEMS**

DESCRIPTION TOTAL QTY/UNIT

<b>ACER X FREEMANII 'AUTUMN BLAZE'</b>	13 EA
<b>CELTIS OCCIDENTALIS</b>	15 EA
<b>GYMNOCLADUS DIOICUS</b>	22 EA
<b>QUERCUS BICOLOR</b>	27 EA
<b>ULMUS AMERICANA 'PRINCETON'</b>	3 EA
<b>CRATAEGUS CRUSGALLI INERMIS, 5'</b>	1 EA

**GENERAL LOCATION MAP**



LOCATION: IL 56 (BUTTERFIELD RD.) EAST OF EJ&E RAILROAD TO EAST OF WINFIELD RD.

CITY/TOWN: WARRENVILLE

COUNTY: DUPAGE

ILLINOIS DEPARTMENT OF TRANSPORTATION

LANDSCAPE REPAIR LOCATION AND LAYOUT PLAN



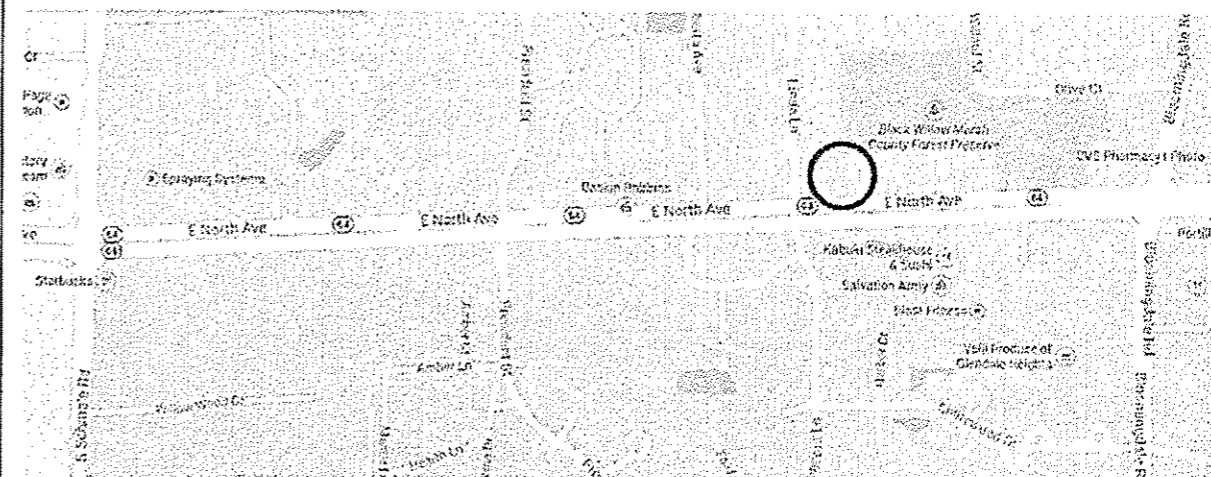
ROUTE	SECTION	COUNTY	TOTAL SHEETS	SHEET NUMBER
VARIOUS	2014-054LS	VARIOUS	19	17

CONTRACT 60Y70

DESCRIPTION      SCHEDULE OF LANDSCAPE ITEMS      TOTAL QTY/UNIT

**GLEDITSIA TRIACANTHOS VAR. INERMIS**  
**'SHADEMASTER'**      3 EA

GENERAL LOCATION MAP



LOCATION: 23W634 NORTH AVENUE

CITY/TOWN: CAROL STREAM

COUNTY: DUPAGE

ILLINOIS DEPARTMENT OF TRANSPORTATION

LANDSCAPE REPAIR LOCATION AND  
LAYOUT PLAN

ROUTE	SECTION	COUNTY	TOTAL SHEETS	SHEET NUMBER
VARIOUS	2014-054LS	VARIOUS	19	18

CONTRACT 60Y70

DESCRIPTION	<u>SCHEDULE OF LANDSCAPE ITEMS</u>	TOTAL QTY/UNIT
<b>TOPSOIL FURNISH AND PLACE, 2"</b>		5445 SQ YD
<b>TOPSOIL FURNISH AND PLACE, 4"</b>		1815 SQ YD
<b>NITROGEN FERTILIZER NUTRIENT</b>		90 POUND
<b>PHOSPHORUS FERTILIZER NUTRIENT</b>		90 POUND
<b>POTASSIUM FERTILIZER NUTRIENT</b>		90 POUND
<b>SEEDING, CLASS 2A</b>		1 ACRE
<b>INTERSEEDING, CLASS 2A</b>		1 ACRE
<b>EROSION CONTROL BLANKET</b>		4840 SQ YD
<b>SODDING, SALT TOLERANT</b>		250 SQ YD
<b>TREE REMOVAL &lt;6" &amp; TURF RESTORATION</b>		12 EA

ILLINOIS DEPARTMENT OF TRANSPORTATION  
 LANDSCAPE REPAIR LOCATION AND  
 LAYOUT PLAN

