

F.A. RTE.	SECTION	COUNTY	TOTAL SHEETS	SHEET NO.
	12-00048-00-SW	ILLINOIS	23	1
CONTRACT NO. 61B01				

STATE OF ILLINOIS
DEPARTMENT OF TRANSPORTATION
DIVISION OF HIGHWAYS
PLANS FOR PROPOSED
FEDERAL AID HIGHWAY
PARK STREET, WASHINGTON AVENUE,
METRA PARKING LOT, AND VARIOUS SIDEWALKS
VARIOUS LIMITS
SIDEWALKS
SECTION 12-00048-00-SW
PROJECT SRTS-4009 (129)
VILLAGE OF WINFIELD
DuPAGE COUNTY
C-91-411-12

**SEE SHEET 2 FOR
INDEX OF SHEETS**

STREET	DESIGN DESIGNATION	POSTED SPEED	TRAFFIC VOLUME
PARK STREET	LOCAL ROAD	20 MPH	1,000 2014 ADT
WASHINGTON AVENUE	LOCAL ROAD	25 MPH	1,000 2014 ADT
WINFIELD ROAD	MINOR ARTERIAL	35 MPH	10,432 2014 ADT
HIGH LAKE/JEWELL ROAD	LOCAL ROAD	30 MPH	7,400 2008 ADT



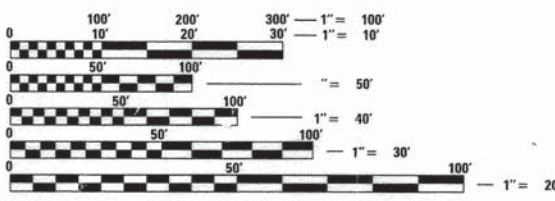
LOCATION OF SECTION INDICATED THIS: - [Symbol] -

STATE OF ILLINOIS
DEPARTMENT OF TRANSPORTATION
DIVISION OF HIGHWAYS

APPROVED JANUARY 6, 2015
[Signature]
 VILLAGE OF WINFIELD

PASSED JANUARY 6, 2015
[Signature] CHRISTOPHER HOLT
 DISTRICT ONE ENGINEER OF LOCAL ROADS AND STREETS

RELEASING FOR BID BASED ON LIMITED REVIEW JANUARY 7, 2015
[Signature]
 DEPUTY DIRECTOR OF HIGHWAYS, REGION ONE ENGINEER

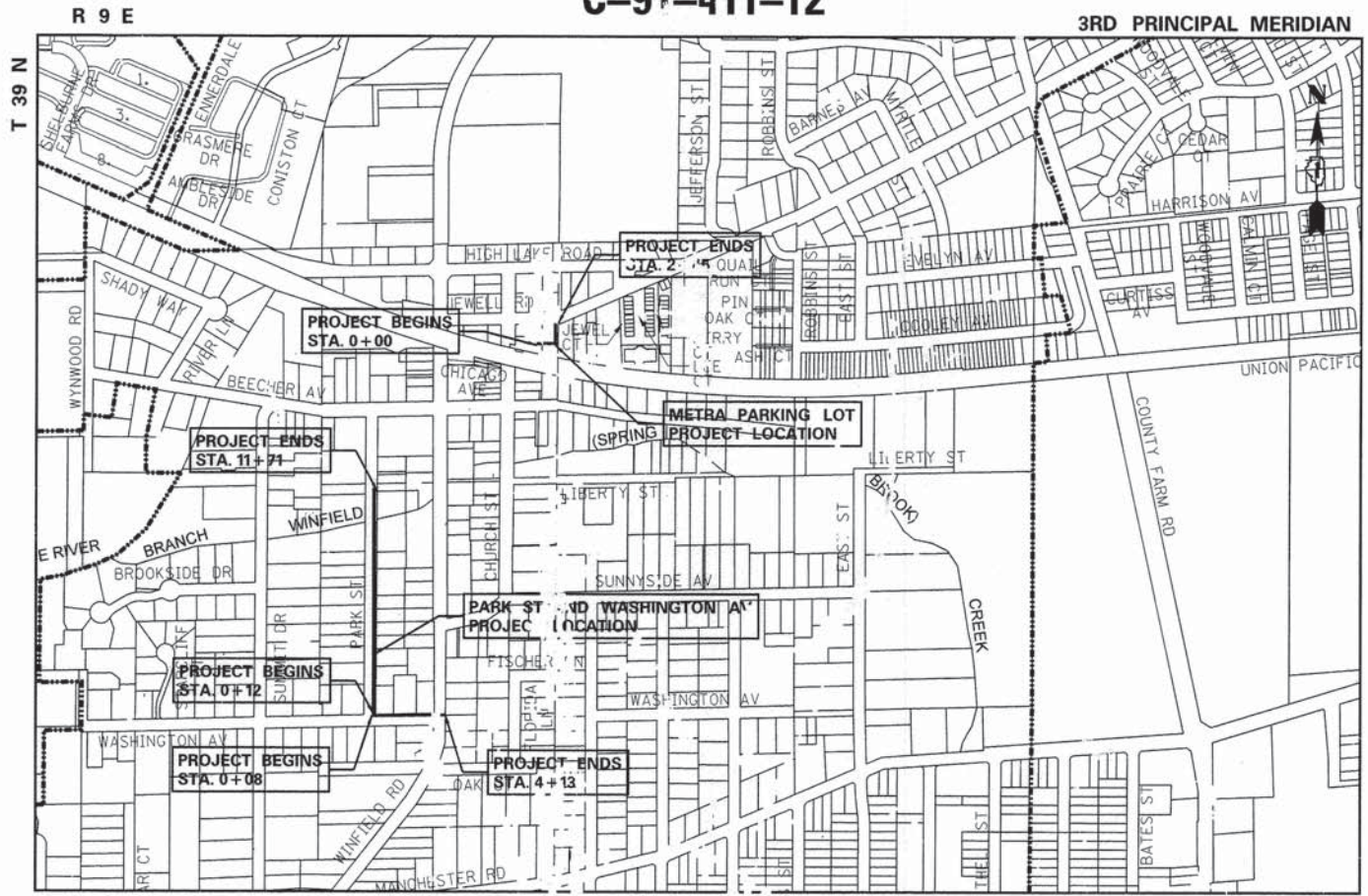


FULL SIZE PLANS HAVE BEEN PREPARED USING STANDARD ENGINEERING SCALES. REDUCED SIZED PLANS WILL NOT CONFORM TO STANDARD SCALES. IN MAKING MEASUREMENTS ON REDUCED PLANS, THE ABOVE SCALES MAY BE USED.

J.U.L.I.E.
 JOINT UTILITY LOCATION INFORMATION FOR EXCAVATION
 1-800-892-0123
 OR 811

PROJECT ENGINEER - DANIEL A WATSON, P.E.
 PROJECT MANAGER - DANIEL A WATSON, P.E.

CONTRACT NO. 61B01



WINFIELD TOWNSHIP LOCATION MAP SCALE: 1"=500'

GROSS LENGTH OF PROJECT = 0.34 MILE
 NET LENGTH OF PROJECT = 0.34 MILE

FEDERAL AID PROGRAM ENGINEER: FAWAD AQUEEL, PE, PTOE (847 705-4021), SCHAMBAURG, IL



**PRINTED BY THE AUTHORITY
OF THE STATE OF ILLINOIS**

INDEX OF SHEETS

NO.	DESCRIPTION
1	COVER SHEET
2	INDEX OF SHEETS, APPLICABLE HIGHWAY STANDARDS, GENERAL NOTES
3	SUMMARY OF QUANTITIES
4	TYPICAL SECTIONS AND DETAILS
5	SCHEDULE OF QUANTITIES
6	METRA STATION EXISTING CONDITIONS PLAN
7	METRA STATION SIDEWALK PLAN
8	WASHINGTON AVE. SIDEWALK PLAN AND PROFILE
9	PARK STREET SIDEWALK STA 0+12 TO STA 6+00 PLAN AND PROFILE
10	PARK STREET SIDEWALK STA 6+00 TO STA 11+71 PLAN AND PROFILE
11	RETAINING WALL
12	STRIPING LOCATION MAP
13	BEECHER AVE. STRIPING PLAN
14	STRIPING PLAN VARIOUS INTERSECTIONS
15	EROSION AND SEDIMENTATION CONTROL NOTES AND DETAILS
16	DRIVEWAY DETAILS
17	CURB OR CURB AND GUTTER REMOVAL AND REPLACEMENT
18	TRAFFIC CONTROL AND PROTECTION FOR SIDE ROADS, INTERSECTIONS, AND DRIVEWAYS
19	DISTRICT ONE TYPICAL PAVEMENT MARKINGS
20	ARTERIAL ROAD INFORMATION SIGN
21	CROSS SECTIONS SIDEWALK METRA & WASHINGTON AVE
22	CROSS SECTIONS SIDEWALK PARK STREET STA 0+00 TO STA 6+73
23	CROSS SECTIONS SIDEWALK PARK STREET STA 7+00 TO STA 11+00

STATEWIDE HIGHWAY STANDARDS

STANDARD	TITLE
000001-06	STANDARD SYMBOLS, ABBREVIATIONS AND PATTERNS
280001-07	TEMPORARY EROSION CONTROL SYSTEMS
424001-08	CURB RAMPS FOR SIDEWALKS
604001-04	FRAME AND LIDS TYPE 1
701006-05	OFF-ROAD OPERATIONS, 2L, 2W, 15' TO 24" FROM PAVEMENT EDGE
701301-04	LANE CLOSURE 2L, 2W, SHORT TERM OPERATIONS
701311-03	LANE CLOSURE 2L, 2W, MOVING OPERATIONS-DAY ONLY
701501-06	URBAN LANE CLOSURE 2L, 2W, UNDIVIDED
701801-05	SIDEWALK, CORNER OR CROSSWALK CLOSURE
701901-04	TRAFFIC CONTROL DEVICES
780001-05	TYPICAL PAVEMENT MARKINGS

DISTRICT ONE DETAILS

STANDARD	TITLE
BD-02	DRIVEWAY DETAILS
BD-24	DISTANCE BETWEEN ROW AND FACE OF CURB <15'
BD-24	CURB AND GUTTER AND REMOVAL AND REPLACEMENT
TC-10	TRAFFIC CONTROL AND PROTECTION FOR SIDE ROADS INTERSECTIONS AND DRIVEWAYS
TC-13	DISTRICT ONE TYPICAL PAVEMENT MARKINGS
TC-22	ARTERIAL ROAD INFORMATION SIGN

1. SPECIFICATIONS, STANDARDS AND SPECIAL PROVISIONS:

ALL CONSTRUCTION SHALL BE PERFORMED IN ACCORDANCE WITH THE ILLINOIS DEPARTMENT OF TRANSPORTATION "STANDARD SPECIFICATIONS FOR ROAD AND BRIDGE CONSTRUCTION", ADOPTED JAN. 1, 2012 (HEREINAFTER REFERRED TO AS THE STANDARD SPECIFICATIONS); THE "SUPPLEMENTAL SPECIFICATIONS AND RECURRING SPECIAL PROVISIONS", ADOPTED JANUARY 1, 2015; THE LATEST EDITION OF THE ILLINOIS MANUAL ON UNIFORM TRAFFIC CONTROL DEVICES FOR STREETS AND HIGHWAYS"; THE "DETAILS" ON THE PLANS AND THE "SPECIAL PROVISIONS" INCLUDED IN THE CONTRACT DOCUMENTS.

ANY REFERENCE TO STANDARDS THROUGHOUT THE PLANS OR SPECIAL PROVISIONS SHALL BE INTERPRETED AS THE LATEST STANDARD OF THE DEPARTMENT.

2. EXISTING UTILITIES:

EXISTING UTILITIES ARE SHOWN ON THE PLANS ACCORDING TO INFORMATION OBTAINED FROM THE UTILITY COMPANIES, VILLAGE, AND FIELD SURVEYS. THE ACCURACY AND COMPLETENESS OF SAID INFORMATION IS NOT GUARANTEED. IT SHALL BE THE CONTRACTOR'S RESPONSIBILITY TO VERIFY THE EXISTENCE, NATURE, AND EXACT LOCATIONS OF ALL UTILITY LINES AND APPURTENANCES WITHIN THE LIMITS OF THE IMPROVEMENTS. THE CONTRACTOR SHALL GIVE PRIOR NOTIFICATION TO THE UTILITY COMPANIES AND THE VILLAGE OF HIS INTENTION TO BEGIN WORK.

SHOULD CERTAIN EXISTING UTILITY FACILITIES INTERFERE WITH THE PROPOSED CONSTRUCTION, THEY WILL HAVE TO BE REMOVED AND RELOCATED BY THE UTILITY COMPANIES. THE CONTRACTOR SHALL COORDINATE AND SCHEDULE THIS WORK WITH ALL AFFECTED UTILITY COMPANIES AND THE VILLAGE SO AS TO INSURE THE TIMELY COMPLETION AND MAINTENANCE OF SAID UTILITY FACILITIES.

THE CONTRACTOR SHALL BE HELD RESPONSIBLE FOR THE INTERFERENCE WITH OR DAMAGE TO ANY EXISTING UTILITY FACILITY AND APPURTENANCES SUCH AS WATER MAINS, SEWERS, GAS MAINS, ELECTRIC AND SIGNAL CABLES, CONDUITS, ETC., RESULTING FROM THE OPERATIONS OF HIS EQUIPMENT OR MEN AND SHALL REPAIR OR REPLACE SAME AT HIS OWN EXPENSE AND WITH THE LEAST POSSIBLE DELAY. NO EXTRA COMPENSATION WILL BE ALLOWED TO THE CONTRACTOR FOR ANY EXPENSES INCURRED BECAUSE OF THE DELAYS, INCONVENIENCES, OR INTERRUPTIONS TO HIS WORK RESULTING FROM COMPLIANCE WITH THE ABOVE REQUIREMENTS.

BEFORE STARTING ANY EXCAVATION, THE CONTRACTOR SHALL CALL "1.U.L.L.E." AT 800-892-0123 FOR FIELD LOCATIONS OR BURIED ELECTRIC, TELEPHONE, AND GAS FACILITIES (48 HOUR NOTIFICATION REQUIRED).

THE CONTRACTOR SHALL COORDINATE CONSTRUCTION ACTIVITIES WITH UTILITY COMPANIES AND THE VILLAGE OF WINFIELD.

THE PLANS SHOW THE LOCATION OF CERTAIN UNDERGROUND AND OVERHEAD UTILITY LINES, WATER MAINS, GAS MAINS, TELEPHONE LINES, AND SEWERS, ACCORDING TO AVAILABLE RECORDS. THE DETERMINATION OF THE EXACT LOCATION OF ALL EXISTING FACILITIES AND ALL OTHER PIPES AND SERVICES, AND THEIR PROPER PROTECTION FROM DAMAGE, SUPPORT AND MAINTENANCE, DURING ALL CONSTRUCTION OPERATIONS IS THE EXPRESSED RESPONSIBILITY OF THE CONTRACTOR.

3. PROTECTION OF PUBLIC/PRIVATE PROPERTY:

THE CONTRACTOR SHALL PROTECT ALL EXISTING TREES SCHEDULED TO REMAIN; SHRUBS, FENCES, DRAIN LINES, POWER LINES, AND OTHER PUBLIC/PRIVATE PROPERTY. ANY ITEM THAT IS DAMAGED SHALL BE REPLACED OR REPAIRED BY THE CONTRACTOR AS DIRECTED BY THE ENGINEER AT NO ADDITIONAL COST TO THE DEPARTMENT.

4. EXISTING STREET CLEANLINESS:

THE CONTRACTOR SHALL MAINTAIN THE SITES IN A CLEAN AND ORDERLY MANNER. DEBRIS AND SURPLUS MATERIAL REMOVAL AND RESTORATION SHALL PROCEED AS THE WORK PROCEEDS. IF THE OWNER OR THE ENGINEER SO DIRECTS, THE CONTRACTOR SHALL STOP ALL OTHER WORK AND CONCENTRATE ON CLEAN-UP AND RESTORATION. DEBRIS AND SURPLUS MATERIAL SHALL BE DISPOSED OF BY THE CONTRACTOR OFF-SITE.

THE CONTRACTOR SHALL KEEP THE EXISTING AND ADJACENT STREET PAVEMENT CLEAN OF DIRT, MUD, AND OTHER DEBRIS AND, WHEN NECESSARY, CLEAN SAID PAVEMENTS ON A DAILY BASIS WITH A STREET SWEEPER. THE COST FOR CLEANING STREET PAVEMENTS SHALL BE CONSIDERED INCLUDED IN THE COST OF THE CONTRACT.

5. REMOVAL, MAINTENANCE AND RESETTING EXISTING MAILBOXES, STREET SIGNS AND STOP SIGNS:

EXISTING MAILBOXES, STREET SIGNS, AND STOP SIGNS WHICH INTERFERE WITH CONSTRUCTION SHALL BE REMOVED AND TEMPORARILY RELOCATED DURING CONSTRUCTION BY THE CONTRACTOR IN ACCORDANCE WITH ARTICLES 107.20 AND 107.25. AFTER THE WORK HAS BEEN SUBSTANTIALLY COMPLETED, SAID MAILBOXES AND SIGNS SHALL BE RESET AT A LOCATION SPECIFIED BY THE ENGINEER. THE COST OF THIS WORK SHALL BE CONSIDERED AS INCLUDED IN THE COST OF THE CONTRACT WITH NO ADDITIONAL COMPENSATION ALLOWED. ANY SIGN DAMAGED OR LOST SHALL BE REPLACED AT THE CONTRACTOR'S EXPENSE. TEMPORARY STOP SIGNS SHALL BE PLACED AS REQUIRED BY THE ENGINEER AS PART OF THE TRAFFIC CONTROL AND PROTECTION PAY ITEM.

6. SAWCUTTING:

THE CONTRACTOR SHALL MAKE ALL SAW CUTS REQUIRED FOR THE REMOVAL OF CONCRETE CURB AND GUTTER, CONCRETE SIDEWALK, CONCRETE DRIVEWAYS, BITUMINOUS PAVEMENTS OR AS DIRECTED BY THE ENGINEER. THE COST FOR SAW CUTTING SHALL BE INCLUDED IN THE COST OF THE ASSOCIATED WORK ITEM AND SHALL NOT BE MEASURED SEPARATELY FOR PAVEMENT.

7. CONSTRUCTION LIMITS:

THE CONTRACTOR SHALL CONFINE HIS OPERATIONS WITHIN THE DEDICATED ROADWAY RIGHT-OF-WAY OR EASEMENTS OBTAINED BY THE VILLAGE OF WINFIELD. ANY DAMAGE OUTSIDE OF SAID RIGHT-OF-WAY OR EASEMENTS SHALL BE REPAIRED AT THE CONTRACTOR'S EXPENSE.

8. BARRICADES:

THE CONTRACTOR SHALL PROVIDE AND INSTALL TWO (2) WEIGHTED SANDBAGS ON EACH TYPE I OR TYPE II BARRICADE USED, ONE (1) WEIGHTED SANDBAG ACROSS EACH RAIL.

VILLAGE AND UTILITY COMPANIES CONTACT INFORMATION:

VILLAGE OF WINFIELD
27W465 JEWELL RD
WINFIELD, ILLINOIS 60190
PHONE: (630) 933-7100
PUBLIC WORKS
ATTN: LOOMIS TYE
PHONE: (630) 933-7141

COMMONWEALTH EDISON
1N423 SWIFT ROAD
LOMBARD, ILLINOIS 60148
ATTN: JOE STACHO
PHONE: (630) 424-5704

NICOR GAS
1844 FERRY ROAD
NAPERVILLE, ILLINOIS 60563
ATTN: CONNIE LANE
PHONE: (630) 388-3830

AT&T
929 CHILDS STREET
WHEATON, ILLINOIS 60187
ATTN: JOHN EVERS
PHONE: (630) 620-3897

COMCAST
688 INDUSTRIAL DRIVE
ELMHURST, ILLINOIS 60126
ATTN: MARTHA GIERAS
PHONE: (630) 600-6349

SITE BENCHMARK #1: CHISELED CROSS CUT IN CONCRETE PLATFORM TO METRA TRAIN DEPOT LOCATED JUST SOUTH OF COVERED PEDESTRIAN SHELTER
ELEV=734.48

SITE BENCHMARK #2: TOP OF NORTHEAST CORNER OF RETAINING WALL TO BRIDGE OVER WINFIELD CREEK ON PARK STREET
ELEV=713.81

REFERENCE BENCHMARK: BRASS DISK ON NORTHEAST WINGWALL TO BRIDGE OVER WINFIELD CREEK ON MANCHESTER RD.
(W113004) ELEV=716.86 (NAVD 88)

FILE NAME = N:\dgn\WF\WF587_SRTS_Sidewalk\sheets\WF587_02Indexquantities.dgn	USER NAME = .USER.	DESIGNED -	REVISED -	STATE OF ILLINOIS DEPARTMENT OF TRANSPORTATION	INDEX OF SHEETS, APPLICABLE HIGHWAY STANDARDS, GENERAL NOTES			F.A.U. RTE.	SECTION	COUNTY	TOTAL SHEETS	SHEET NO.
		CHECKED -	REVISED -		SCALE:	SHEET NO. 2 OF 23 SHEETS	STA.	TO STA.	12-00048-00-SW	DuPAGE	23	2
		DRAWN -	REVISED -		CONTRACT NO. 61B01							
		DATE - APR 2013	REVISED -		ILLINOIS FED. AID PROJECT							

SUMMARY OF QUANTITIES

ITEM NO.	ITEM	UNIT	TOTAL QUANTITY	CONSTRUCTION TYPE CODE 0021
20101000	TEMPORARY FENCE	FOOT	100	100
20101100	TREE TRUNK PROTECTION	EACH	16	16
20101200	TREE ROOT PRUNNING	EACH	16	16
20101300	TREE PRUNNING (1 TO 10 INCH DIAMETER)	EACH	2	2
20101350	TREE PRUNNING (OVER 10 INCH DIAMETER)	EACH	18	18
20101400	NITROGEN FERTILIZER NUTRIENT	POUND	45	45
20101500	PHOSPHORUS FERTILIZER NUTRIENT	POUND	45	45
20101600	POTASSIUM FERTILIZER NUTRIENT	POUND	45	45
20200100	EARTH EXCAVATION	CU YD	240	240
20800150	TRENCH BACKFILL	CU YD	2	2
21101625	TOPSOIL FURNISH AND PLACE, 6"	SQ YD	2420	2420
21400100	GRADING AND SHAPING DITCHES	FOOT	540	540
25000110	SEEDING, CLASS 1A	ACRE	0.50	0.5
25100630	EROSION CONTROL BLANKET	SQ YD	2420	2420
28000400	PERIMETER EROSION BARRIER	FOOT	100	100
28000500	INLET AND PIPE PROTECTION	EACH	11	11
35101600	AGGREGATE BASE COURSE, TYPE B 4"	SQ YD	951	951
35101800	AGGREGATE BASE COURSE, TYPE B 6"	SQ YD	165	165
* 40600982	HOT-MIX ASPHALT SURFACE REMOVAL BUTT-JOINT	SQ YD	8	8
* 40603080	HOT-MIX ASPHALT BINDER COURSE, IL-19.0, N50	TCN	17	17
* 40603335	HOT-MIX ASPHALT SURFACE COURSE, MIX "D", N50	TON	20	20
42300200	PORTLAND CEMENT CONCRETE DRIVEWAY PAVEMENT, 6 INCH	SQ YD	20	20
42400200	PORTLAND CEMENT CONCRETE SIDEWALK 5 INCH	SQ FT	8330	8330
42400800	DETECTABLE WARNINGS	SQ FT	50	50
44000200	DRIVEWAY PAVEMENT REMOVAL	SQ YD	24	24
44000500	COMBINATION CURB AND GUTTER REMOVAL	FOOT	73	73
44000600	SIDEWALK REMOVAL	SQ FT	200	200

ITEM NO.	ITEM	UNIT	TOTAL QUANTITY	CONSTRUCTION TYPE CODE 0021
50105220	PIPE CULVERT REMOVAL	FOOT	151	151
50800105	REINFORCEMENT BARS	POUNDS	94	94
54002010	EXPANSION BOLTS 1/2"	EACH	16	16
54213657	PRECAST REINFORCED CONCRETE FLARED END SECTION 12"	EACH	1	1
54215547	METAL END SECTIONS 12'	EACH	11	11
542D0217	PIPE CULVERTS, CLASS D, TYPE 1, 12"	FOOT	185	185
550A0050	STORM SEWER CLASS A, TYPE 1, 12"	FOOT	22	22
60100905	PIPE DRAINS 4"	FOOT	15	15
60234200	INLETS TYPE A, TYPE 1 FRAME, OPEN LID	EACH	2	2
60255500	MANHOLES TO BE ADJUSTED	EACH	3	3
60603800	COMBINATION CONCRETE CURB AND GUTTER, TYPE B-6.12	FOOT	10	10
60605000	COMBINATION CONCRETE CURB AND GUTTER, TYPE B-6.24	FOOT	23	23
67100100	MOBILIZATION	L SUM	1	1
70102620	TRAFFIC CONTROL & PROTECTION, STANDARD 701501	L SUM	1	1
70102640	TRAFFIC CONTROL & PROTECTION, STANDARD 701801	L SUM	1	1
* 78000600	THERMOPLASTIC PAVEMENT MARKING-LINE 12"	FOOT	1710	1710
* 78000650	THERMOPLASTIC PAVEMENT MARKING-LINE 24"	FOOT	220	220
78300100	PAVEMENT MARKING REMOVAL	SQ FT	1080	1080
X0300266	WOODEN FENCE REMOVAL	FOOT	90	90
X0327611	REMOVE AND REINSTALL BRICK PAVER	SQ FT	240	240
* X5090101	PIPE HANDRAIL, SPECIAL, TYPE 1	FOOT	20	20
* X6026050	SANITARY MANHOLE TO BE ADJUSTED	EACH	3	3
XX000300	CONCRETE STEPS	SQ FT	20	20
XX001621	BRICK PAVER REMOVAL	SQ FT	120	120
XX002030	FLAGSTONE WALL REMOVAL	FOOT	20	20
XX005951	REMOVE AND REPLACE EXISTING STONE WALL	SQ FT	8	8
XX006790	REMOVE AND REPLACE EXISTING BLOCK WALL	SQ FT	10	10
Z0013302	SEGMENTAL CONCRETE BLOCK WALL	SQ FT	100	100

* SPECIALTY ITEMS

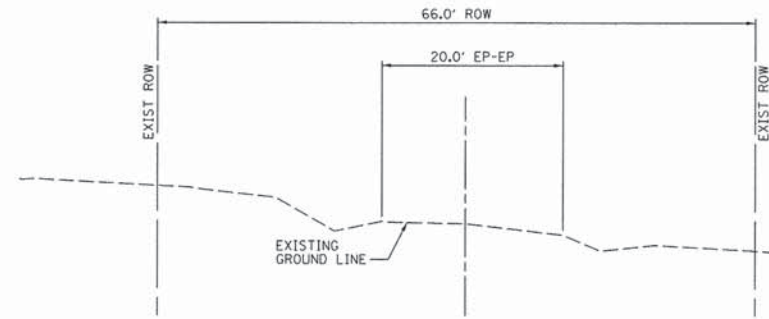
FILE NAME =	USER NAME = .USER.	DESIGNED -	REVISED -
N:\dgn\WF\587 SRTS Sidewalk\sheet\587_03SummaryofQuantities.dgn		CHECKED -	REVISED -
PLOT SCALE = 1.00 ft / in.		DRAWN -	REVISED -
PLOT DATE = 12/19/2014		DATE - APR 2013	REVISED -

**STATE OF ILLINOIS
DEPARTMENT OF TRANSPORTATION**

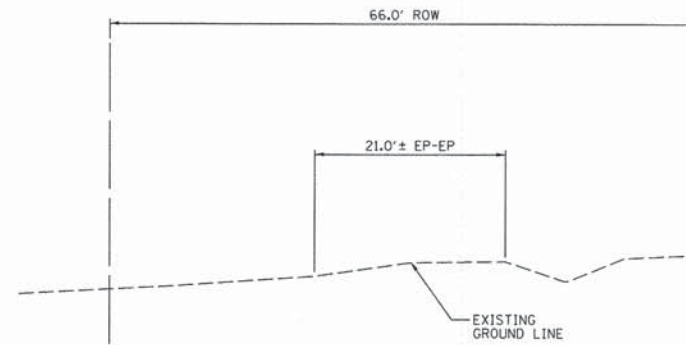
SUMMARY OF QUANTITIES

SCALE: SHEET NO. 3 OF 23 SHEETS STA. TO STA.

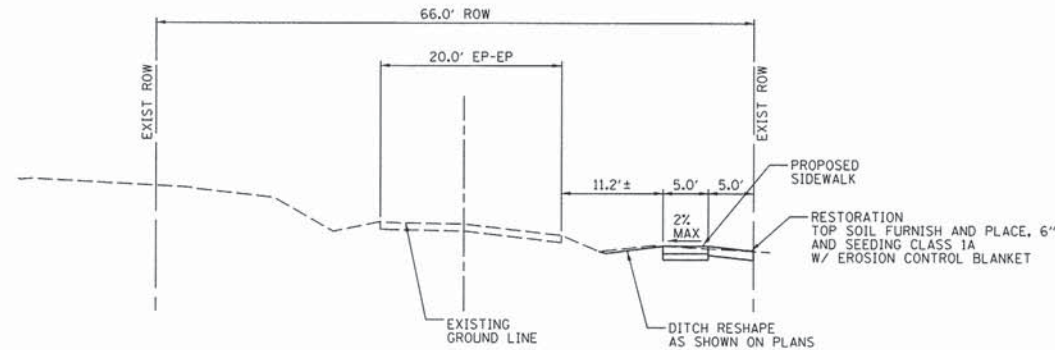
F.A.I. RTE.	SECTION	COUNTY	TOTAL SHEETS	SHEET NO.
	12-00048-00-SW	DUPAGE	23	3
CONTRACT NO. 61B01			ILLINOIS FED. AID PROJECT	



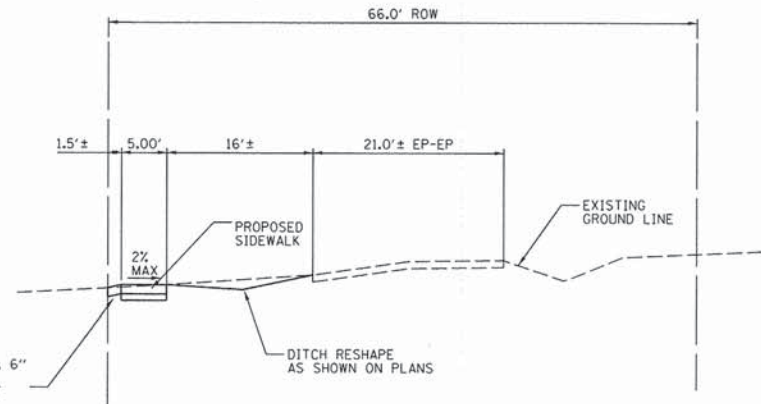
EXISTING TYPICAL SECTION - PARK STREET
SCALE: H:1"=10' V:1"=5'
STA 0+00 TO STA 11+75



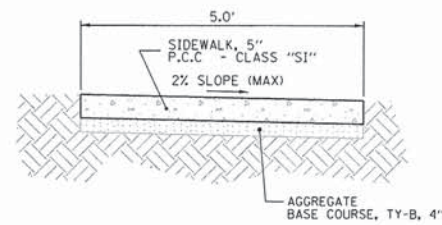
EXISTING TYPICAL SECTION - WASHINGTON STREET
SCALE: H:1"=10' V:1"=5'
STA 0+00 TO STA 3+60



PROPOSED TYPICAL SECTION - PARK STREET
SCALE: H:1"=10' V:1"=5'
STA 0+00 TO STA 11+75



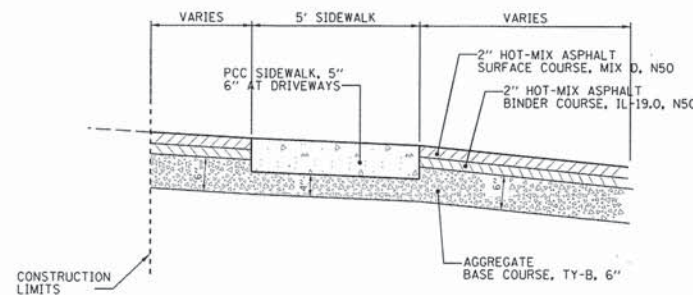
PROPOSED TYPICAL SECTION - WASHINGTON STREET
SCALE: H:1"=10' V:1"=5'
STA 0+00 TO STA 3+60



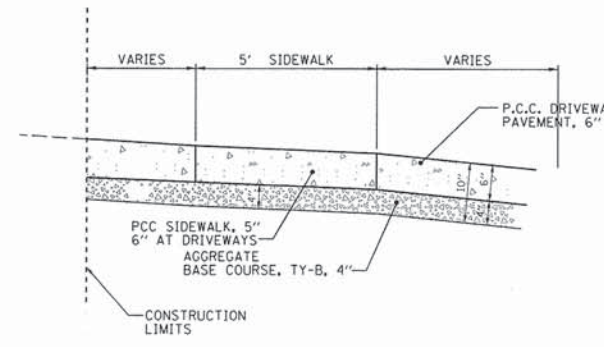
NOTES:

1. THE ACTUAL WIDTH OF THE SIDEWALK IS TO BE PLUS 0" TO 1/2" OF THE WIDTH SPECIFIED.
2. A 1/2" PREFORMED EXPANSION JOINT, CONFORMING TO THE EXACT CROSS-SECTION OF THE SIDEWALK, SHALL BE PLACED AT 50 FOOT INTERVALS AND AT THE END OF EACH POUR.
3. CONTRACTION JOINTS SHALL BE PLACED AT 5 FOOT INTERVALS.
4. THIS ITEM SHALL BE PAID FOR AT THE CONTRACT UNIT PRICE PER SQ. FT. FOR P.C.C. SIDEWALK OF THE THICKNESS SPECIFIED WHICH SHALL BE FULL COMPENSATION FOR ALL LABOR AND MATERIAL REQUIRED INCLUDING THE EXPANSION AND CONTRACTION JOINTS AS SPECIFIED, AND ANY MINOR TOUCH-UP EXCAVATION AND BACKFILLING NECESSARY TO CONSTRUCT THE SIDEWALK.
5. SEE STATE DETAILS IN CONTRACT DOCUMENTS FOR CONSTRUCTION OF RED PATTERNED HANDICAPPED RAMPS.

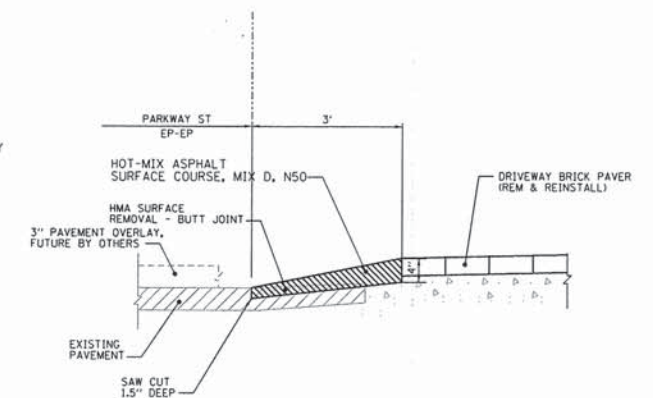
SIDEWALK DETAIL



TYPICAL SECTION THRU HMA DRIVEWAY



TYPICAL SECTION THRU CONCRETE DRIVEWAY



BUTT JOINT & RAMP DETAIL

SMART OR 3P RESURFACING PROJECTS

HOT MIX ASPHALT MIXTURE REQUIREMENT	
MIXTURE TYPE	AIR VOIDS @ Ndes
DRIVEWAY	
HOT-MIX ASPHALT SURFACE COURSE, MIX D, N50, 2"	4% @ 50 GYR
HOT-MIX ASPHALT BINDER COURSE, IL19.0, N50, 2"	4% @ 50 GYR

NOTES:

THE UNIT WEIGHT USED TO CALCULATE ALL HMA SURFACE MIXTURE QUANTITIES IS 112 LBS/SQ YD/IN.
THE "AC TYPE" FOR POLYMERIZED HMA MIXES SHALL BE "SBS/SBR PG 76-22" AND FOR NON-POLYMERIZED HMA THE "AC TYPE" SHALL BE "PG 64-22" UNLESS MODIFIED BY DISTRICT 1 SPECIAL PROVISIONS.
FOR HMA FULL DEPTH "AC TYPE" SEE SPECIAL PROVISIONS.

FILE NAME *	USER NAME * USER	DESIGNED -	REVISED -
N:\dgn\WF\WF587 SRTS SideWalk\sheets\WF587_04TypicalSections.dgn		CHECKED -	REVISED -
PLOT SCALE = 10.00 Ft / 1in		DRAWN -	REVISED -
PLOT DATE = 12/19/2014		DATE - APR 2013	REVISED -

**STATE OF ILLINOIS
DEPARTMENT OF TRANSPORTATION**

TYPICAL SECTIONS AND DETAILS

SCALE: SHEET NO. 4 OF 23 SHEETS

F.A.U. RTE.	SECTION	COUNTY	TOTAL SHEETS	SHEET NO.
	12-00048-00-SW	DuPAGE	23	4
CONTRACT NO. 61B01			ILLINOIS FED. AID PROJECT	

EARTH EXCAVATION		
LOCATION	20200100 EARTH EXCAVATION	
	CY(CUT)	CY(FILL)
METRA PARKING LOT		
STA 0+00 TO STA 0+50	12.9	0.0
STA 0+50 TO STA 1+00	8.9	0.5
STA 1+00 TO STA 1+50	7.0	0.0
STA 1+50 TO STA 2+00	5.0	1.2
STA 2+00 TO STA 2+45	5.7	0.0
SUBTOTAL	39.5	1.7
WASHINGTON AVE		
STA 0+08 TO STA 1+45	20.4	0.0
STA 1+65 TO STA 2+77	15.7	0.0
STA 3+00 TO STA 3+60	7.7	0.0
STA 4+05 TO STA 4+13	0.6	0.0
SUBTOTAL	44.4	0.0
PARK STREET		
STA 0+12 TO STA 1+32	27.9	0.0
STA 1+32 TO STA 2+47	14.6	0.0
STA 2+47 TO STA 3+51	9.1	0.0
STA 3+51 TO STA 4+35	9.2	0.0
STA 4+54 TO STA 5+34	8.6	0.3
STA 5+44 TO STA 6+67	17.6	0.0
STA 6+67 TO STA 7+65	13.3	0.0
STA 7+65 TO STA 8+36	9.4	0.0
STA 8+36 TO STA 9+11	24.7	0.0
STA 9+11 TO STA 10+95	17.7	0.0
STA 11+18 TO STA 11+71	6.0	0.0
SUBTOTAL	158.1	0.3
TOTAL	242.0	2.0
BALANCE (CUT)	240.0	

PORTLAND CEMENT CONCRETE SIDEWALK, 5"	
LOCATION	AREA (SF)
METRA PARKING LOT	
STA 0+00 TO STA 2+45	1300
WASHINGTON AVE	
STA 0+08 TO STA 3+60	1600
STA 4+05 TO STA 4+13	80
PARK STREET	
STA 0+12 TO STA 6+00	2950
STA 6+00 TO STA 11+71	2300
TOTAL	8230

MANHOLES TO BE ADJUSTED		
LOCATION	OFFSET	QUANTITY (EACH)
METRA PARKING LOT		
STA 0+54	9' RT	1
WASHINGTON AVE		
STA 4+12	8' LT	1
PARK ST		
STA 10+70	6' LT	1
TOTAL		3

THERMOPLASTIC PAVEMENT MARKING-LINE 12"	
LOCATION/ INTERSECTION	QUANTITY (LF)
WASHINGTON AV & WINFIELD ROAD	114
SUMMIT DR. & BEECHER AVE	78
PARK ST. & BEECHER AVE	174
WINFIELD RD. & BEECHER AVE	546
CHURCH ST. & BEECHER AVE	330
WINFIELD RD. & JEWELL RD.	102
CHURCH ST. & JEWELL RD.	216
JEWELL RD. & HIGHLAKE RD.	144
WINFIELD RD. & SUNNYSIDE AVE	114
CHURCH ST. & SUNNYSIDE AVE	166
TOTAL	1986

THERMOPLASTIC PAVEMENT MARKING-LINE 24"	
LOCATION/ INTERSECTION	QUANTITY (LF)
WASHINGTON AV & WINFIELD ROAD	0
SUMMIT DR. & BEECHER AVE	13
PARK ST. & BEECHER AVE	14
WINFIELD RD. & BEECHER AVE	93
CHURCH ST. & BEECHER AVE	27
WINFIELD RD. & JEWELL RD.	18
CHURCH ST. & JEWELL RD.	13
JEWELL RD. & HIGHLAKE RD.	24
WINFIELD RD. & SUNNYSIDE AVE	15
CHURCH ST. & SUNNYSIDE AVE	22
TOTAL	239

SANITARY MANHOLES TO BE ADJUSTED		
LOCATION	OFFSET	QUANTITY (EACH)
PARK STREET		
STA 3+05	10' LT	1
STA 10+82	2' LT	1
STA 11+30	1' RT	1
TOTAL		3

COMBINATION CURB AND GUTTER REMOVAL	
LOCATION	QUANTITY (LF)
METRA PARKING LOT	
STA 0+62 TO STA 0+87, LT	40
STA 0+08 TO STA 0+16, LT	10
WASHINGTON AVE	
STA 3+60	13
STA 4+05	10
TOTAL	73

PCC CURB AND GUTTER B-6.24	
LOCATION	QUANTITY (LF)
WASHINGTON AVE	
STA 3+60	13
STA 4+05	10
TOTAL	23

INLET TY A, 2' DIA W/ TY1 FR& GR		
LOCATION	OFFSET	QUANTITY (EACH)
PARK STREET		
STA 8+95	8' LT	1
STA 11+52	7' LT	1
TOTAL		2

PCC CURB AND GUTTER B-6.12	
LOCATION	QUANTITY (LF)
METRA STATION PARKING LOT	
STA 0+05	10
TOTAL	10

12" FES W/ GRATE		
LOCATION	OFFSET	QUANTITY (EACH)
PARK STREET		
STA 11+25	9' RT	1
TOTAL		1

PCC CURB AND GUTTER B-6.12	
LOCATION	QUANTITY (LF)
METRA STATION PARKING LOT	
STA 0+05	10
TOTAL	10

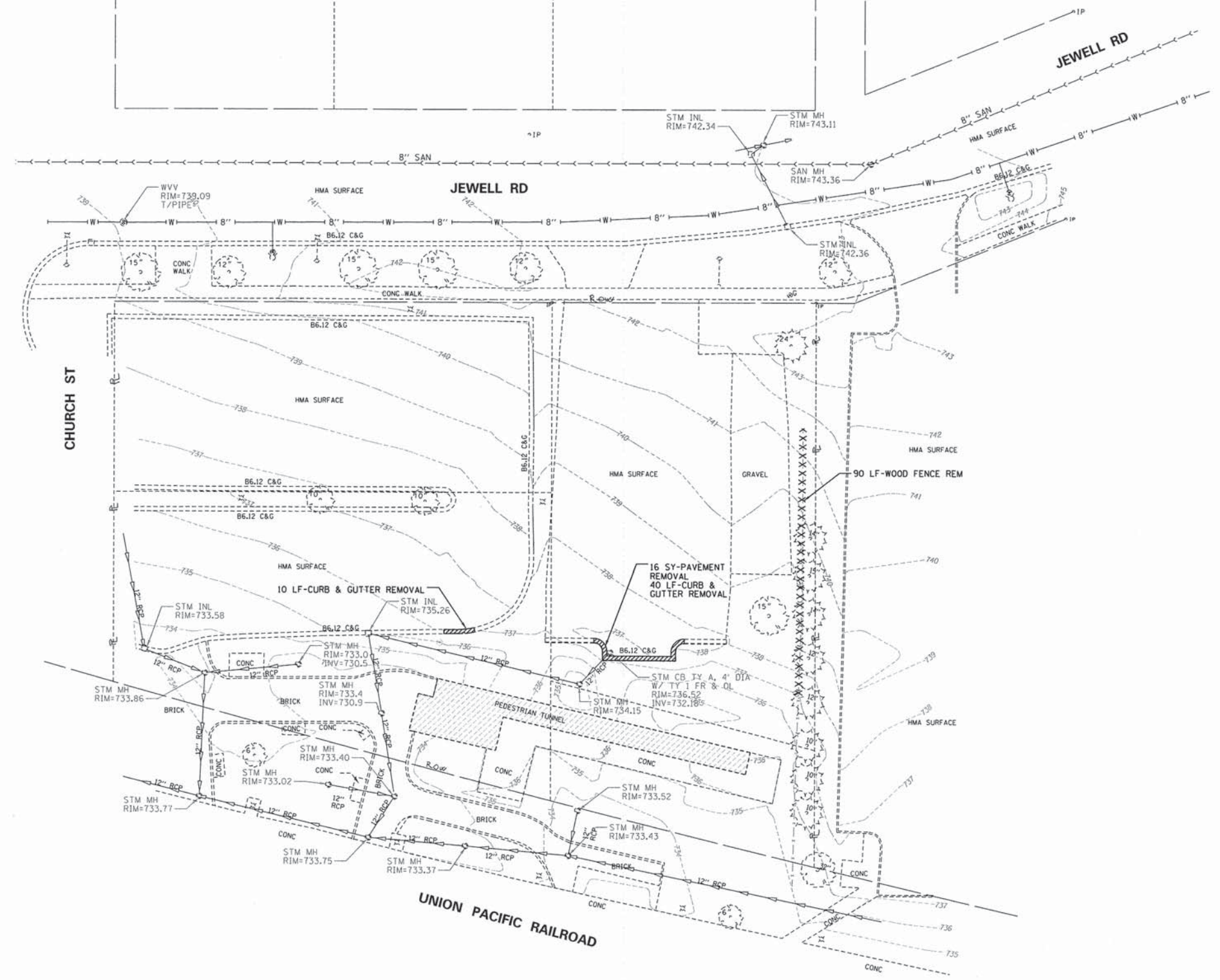
FILE NAME = N:\dgn\WF\587 SRTS Sidewalk\sheet5.dgn	USER NAME = .USER_	DESIGNED -	REVISED -
	587_05ScheduleofQuantities.dgn	CHECKED -	REVISED -
	PLOT SCALE = 1.00 Ft / in.	DRAWN -	REVISED -
	PLOT DATE = 12/11/2014	DATE - APR 2013	REVISED -

**STATE OF ILLINOIS
DEPARTMENT OF TRANSPORTATION**

SCHEDULE OF QUANTITIES

SCALE: SHEET NO. 5 OF 23 SHEETS STA. TO STA.

F.A.U. RTE.	SECTION	COUNTY	TOTAL SHEETS	SHEET NO.
	12-00048-00-SW	DuPAGE	23	5
CONTRACT NO. 61B01				
ILLINOIS FED. AID PROJECT				



FILE NAME = N:\dgn\WF\WF587 SRTS Sidewalk\sheet6.dgn	USER NAME = .USER. 587_860\epot\ExistingConditionsPlan.dgn	DESIGNED -	REVISED -
	PLOT SCALE = 20.00 ft / in.	CHECKED -	REVISED -
	PLOT DATE = 12/12/2014	DRAWN -	REVISED -
		DATE = APR 2013	REVISED -

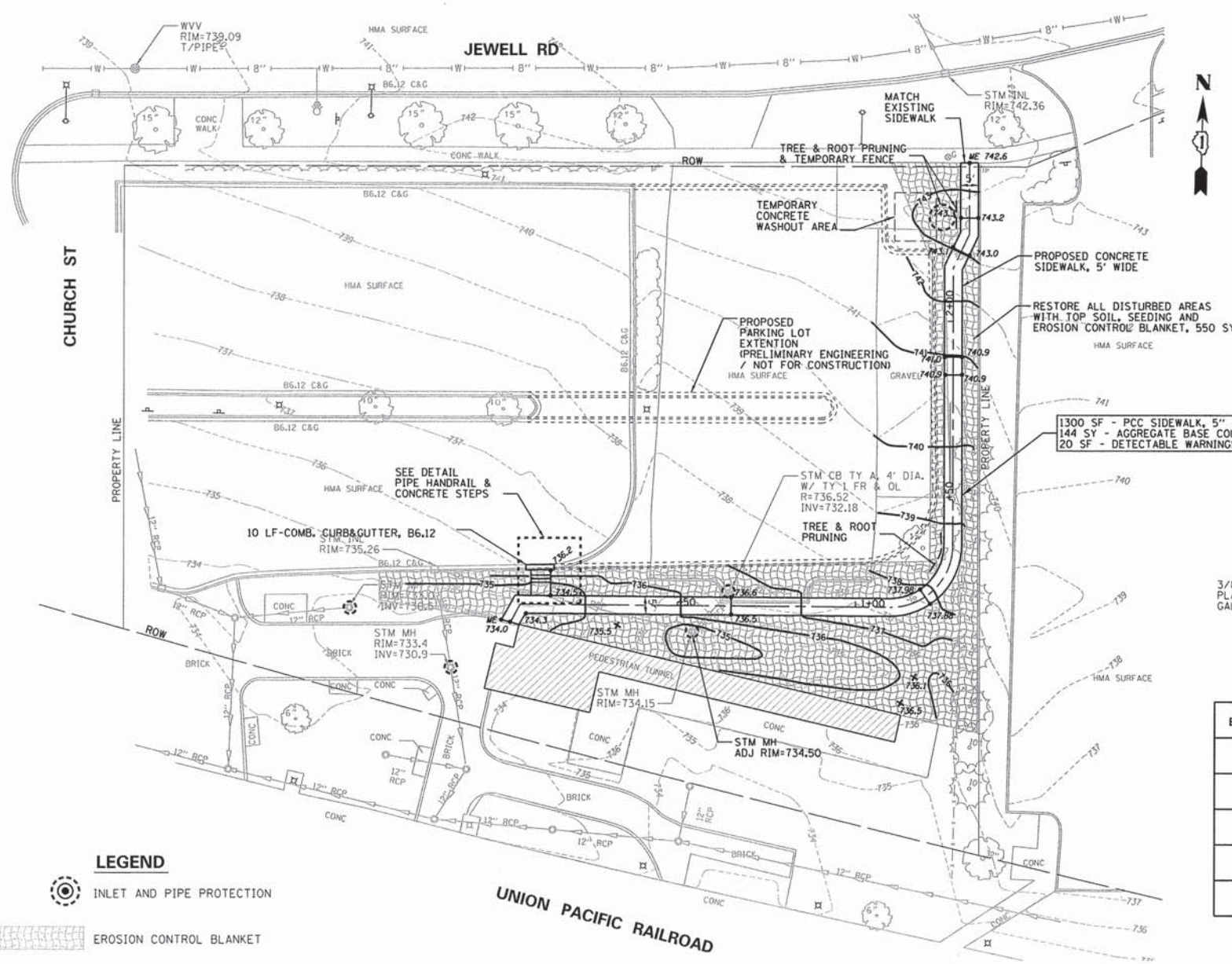
**STATE OF ILLINOIS
DEPARTMENT OF TRANSPORTATION**

**METRA STATION
EXISTING CONDITIONS PLAN**

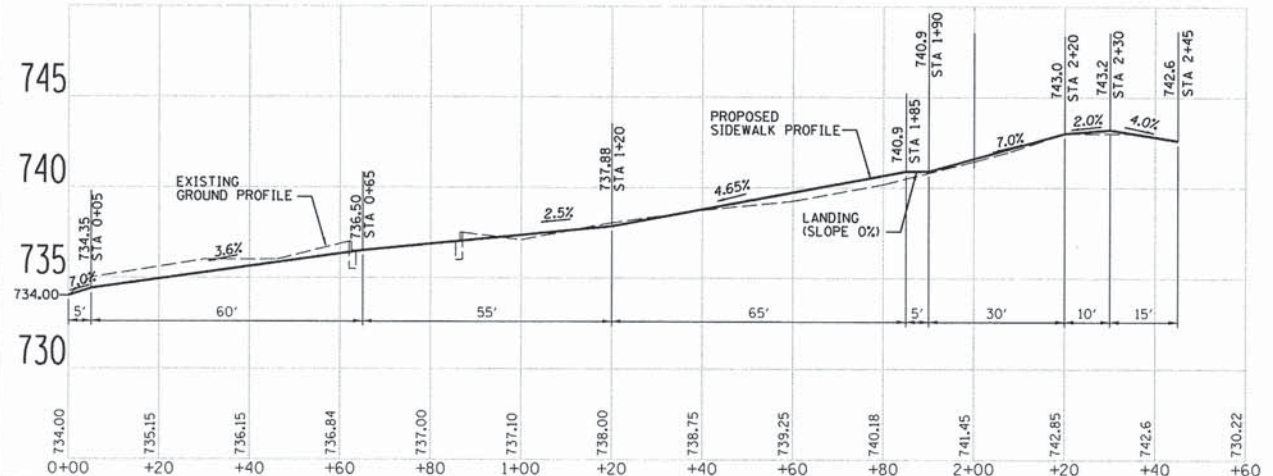
SCALE: 1"=20' SHEET NO. 6 OF 23 SHEETS STA. TO STA.

F.A.U. RTE.	SECTION	COUNTY	TOTAL SHEETS	SHEET NO.
	12-00048-00-SW	DuPAGE	23	6
CONTRACT NO. 61B01			ILLINOIS FED. AID PROJECT	

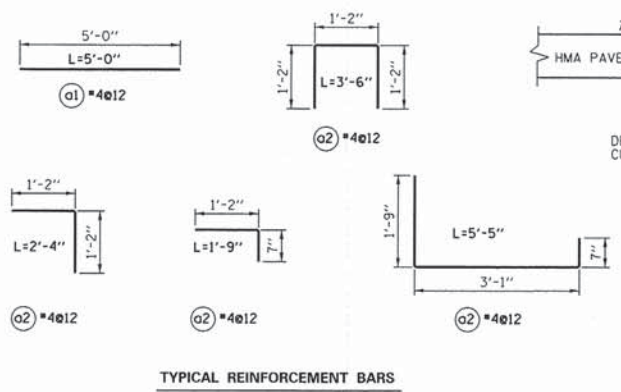
WF587_060\epot\ExistingConditionsPlan.dgn 12/12/2014 8:13:47 AM



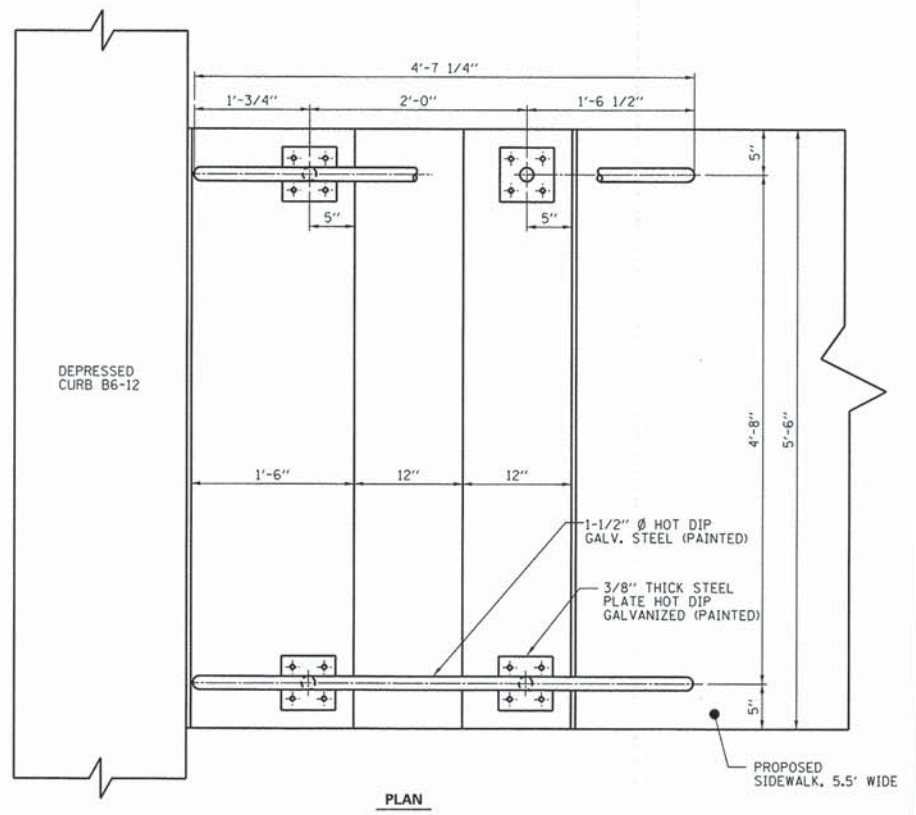
- LEGEND**
- INLET AND PIPE PROTECTION
 - EROSION CONTROL BLANKET
 - ME** MATCH EXISTING ELEVATION
 - XXX** PROPOSED SIDEWALK ELEVATION



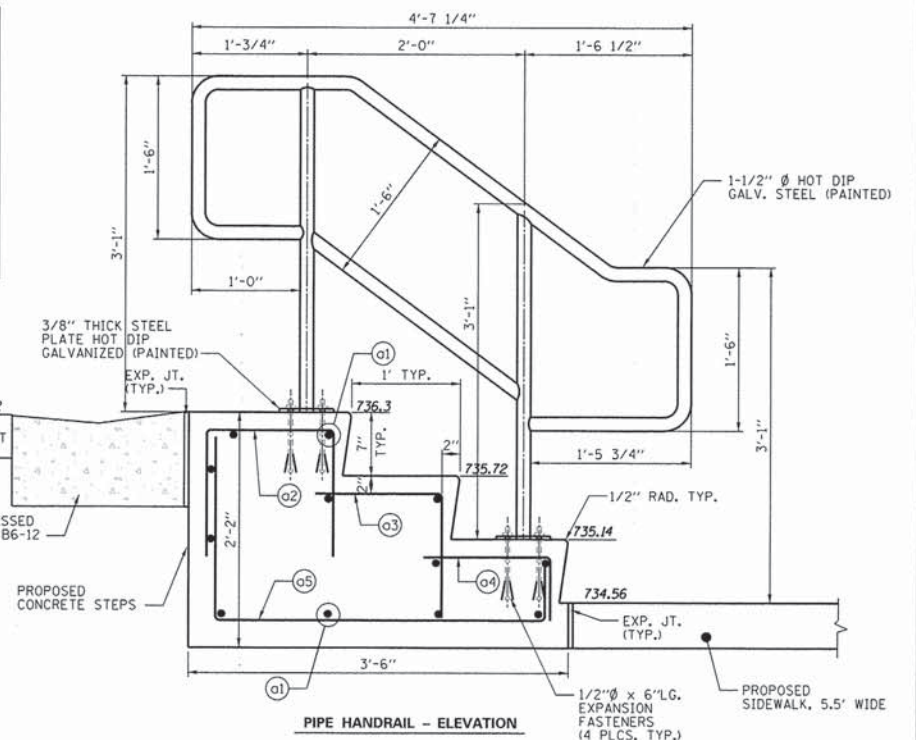
BAR	SIZE	QTY	LENGTH	SHAPE
o1	#4	12	5'-0"	—
o2	#4	6	3'-6"	┌
o3	#4	6	2'-4"	└
o4	#4	6	1'-9"	└
o5	#4	6	5'-5"	└



TYPICAL REINFORCEMENT BARS



PLAN



PIPE HANDRAIL AND CONCRETE STEPS DETAILS

SCALE: 1/2" = 1'-0"

ALL RAILINGS AND HANDRAILS SHALL BE RUBBED SMOOTH AND FREE OF ANY SHARP EDGES OR PROTRUSIONS. THE RAILINGS AND HANDRAILS SHALL THEN BE CLEANED AND FINISHED WITH A GLOSS EPOXY DARK BROWN PROTECTIVE COATING ACCORDING TO THE SPECIFICATIONS.

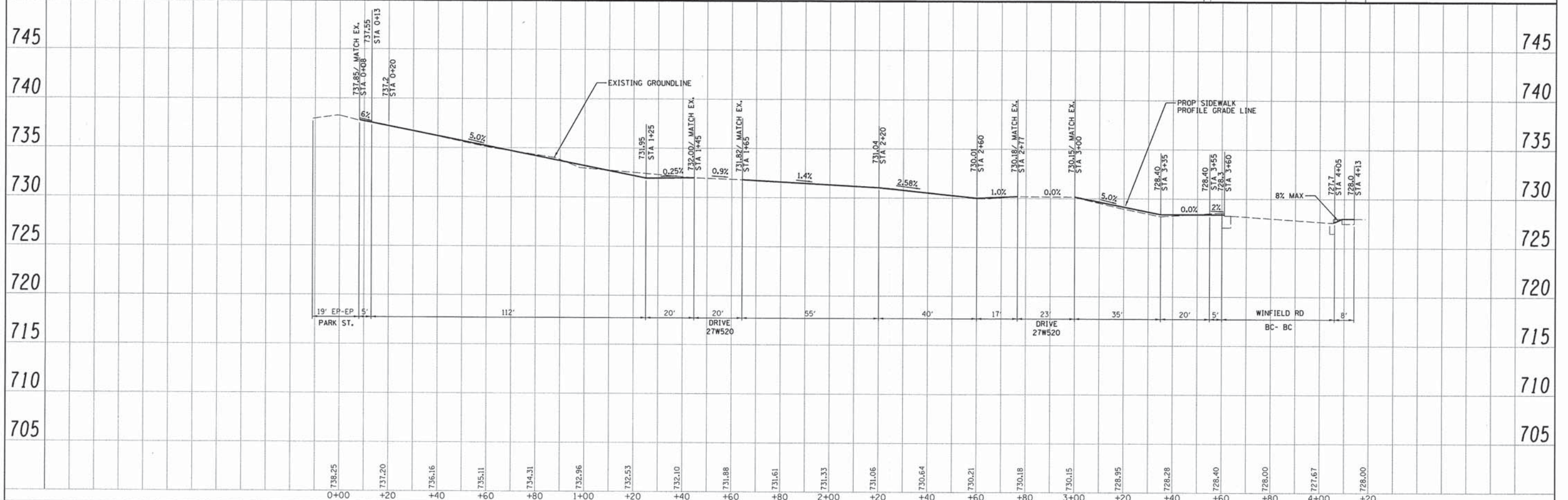
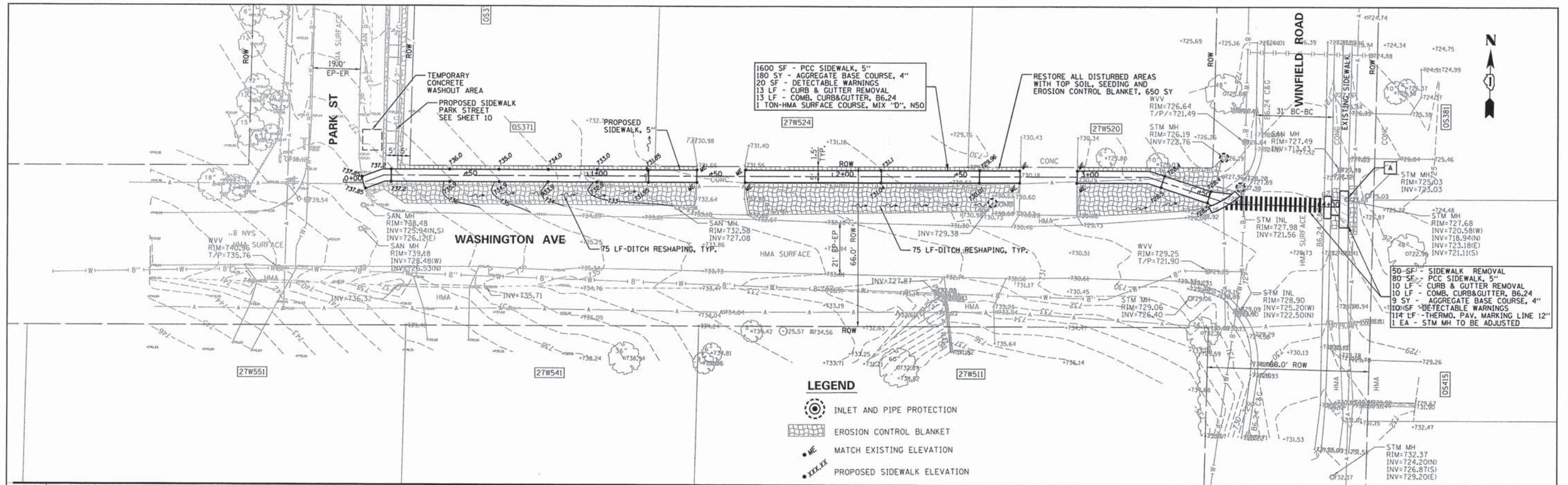
FILE NAME =	USER NAME = .USER.	DESIGNED -	REVISED -
N:\dgn\WF587 SRTS Sidewalk\sheet\WF587_07DpotPlan.dgn		CHECKED -	REVISED -
PLOT SCALE = 20.00 Ft / in.		DRAWN -	REVISED -
PLOT DATE = 12/19/2014		DATE - APR 2013	REVISED -

STATE OF ILLINOIS
DEPARTMENT OF TRANSPORTATION

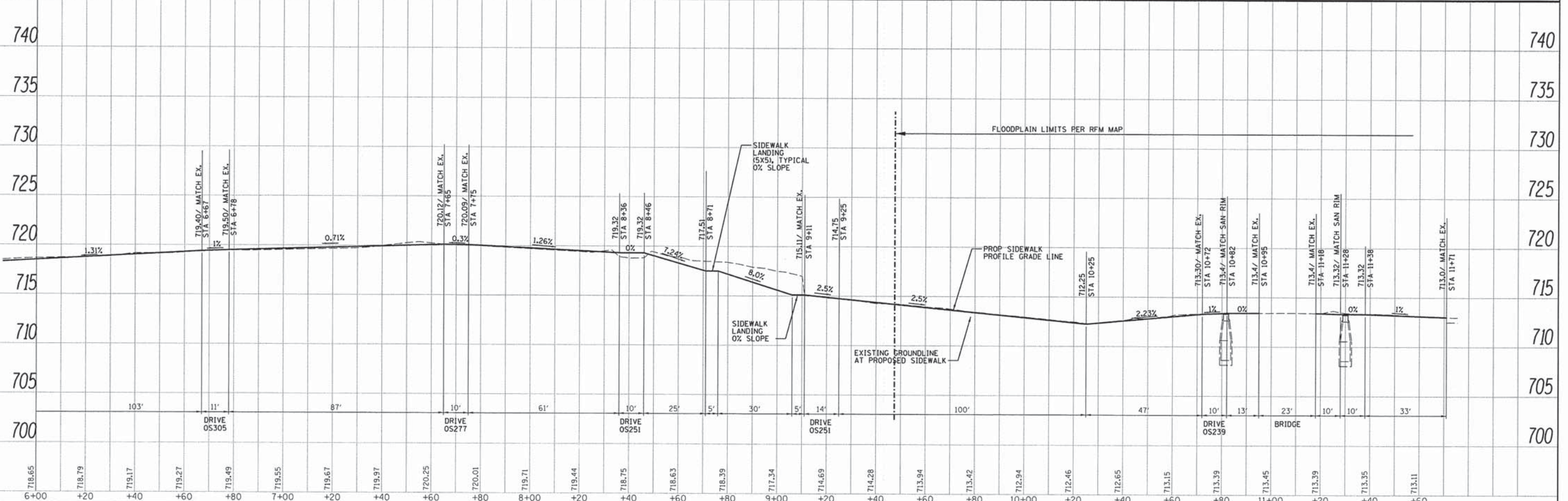
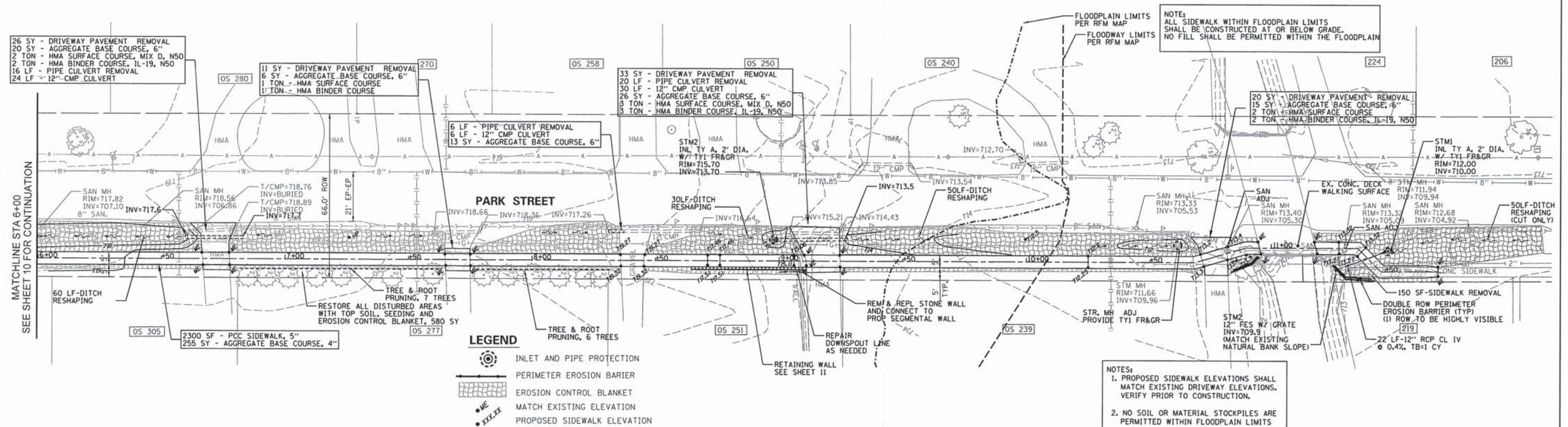
METRA STATION
SIDEWALK PLAN

SCALE: 1"=20' SHEET NO. 7 OF 23 SHEETS STA. TO STA.

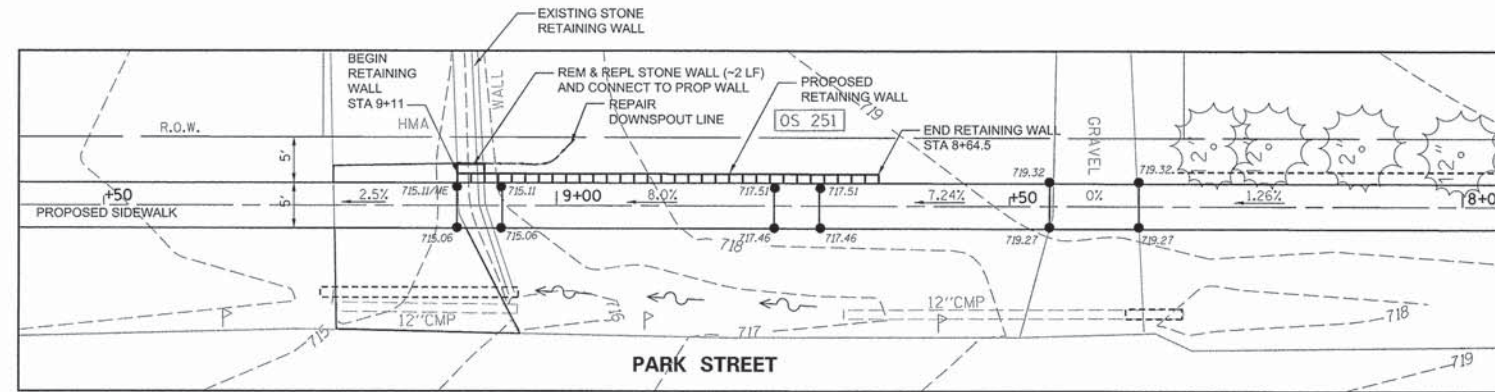
F.A.U. RTE.	SECTION	COUNTY	TOTAL SHEETS	SHEET NO.
	12-00048-00-SW	DUPAGE	23	7
CONTRACT NO. 61B01			ILLINOIS FED. AID PROJECT	



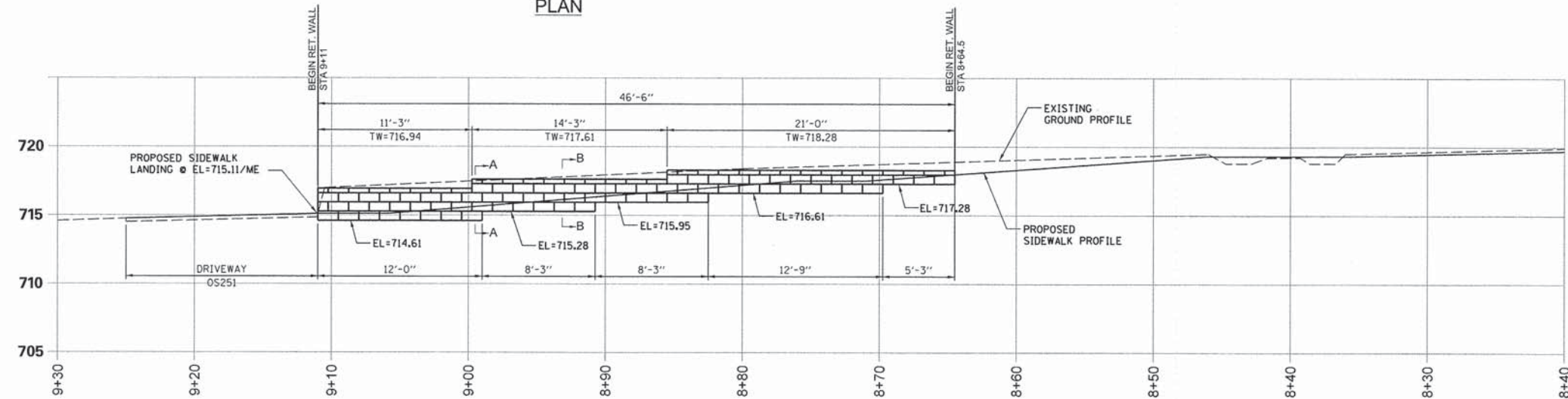
FILE NAME = N:\dgn\WF587 SRTS Sidewalk\sheet\587.88\WashingtonPP01.dgn	USER NAME = .USER_	DESIGNED -	REVISIONS -	STATE OF ILLINOIS DEPARTMENT OF TRANSPORTATION	WASHINGTON AVENUE SIDEWALK PLAN AND PROFILE	F.A.U. NO.	SECTION	COUNTY	TOTAL SHEETS	SHEET NO.
PLOT SCALE = 20.00 ft / in.	DRAWN -	REVISIONS -	12-00048-00-SW			DuPAGE	23	8		
PLOT DATE = 12/12/2014	DATE - APR 2013	REVISIONS -	CONTRACT NO. 61801							
						ILLINOIS FED. AID PROJECT				



FILE NAME = N:\dgn\WF\587 SRTS Sidewalk\sheet10.dgn		DESIGNED -	REVISED -	STATE OF ILLINOIS DEPARTMENT OF TRANSPORTATION		PARK STREET SIDEWALK PLAN AND PROFILE		F.A.U. RTE.	SECTION	COUNTY	TOTAL SHEETS	SHEET NO.
USER NAME = _USER_		CHECKED -	REVISED -					12-00048-00-SW	DUPAGE		23	10
PLOT SCALE = 20.00 Ft / in.		DRAWN -	REVISED -					CONTRACT NO. 61B01				
PLOT DATE = 12/12/2014		DATE - APR 2013	REVISED -					ILLINOIS FED. AID PROJECT				

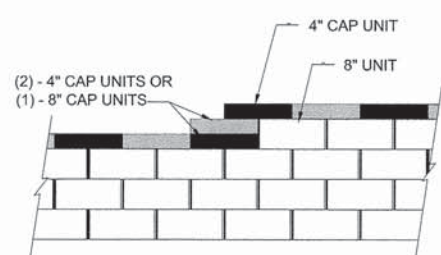


PLAN



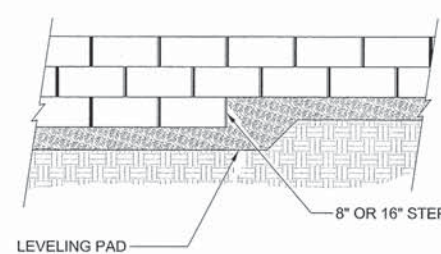
ELEVATION RETAINING WALL (FACE)
SCALE: 1"=5'

- NOTES SEGMENTAL PRECAST BLOCK WALL SPECIFICATIONS:
1. THE SECTION SHOWN REPRESENTS TYPICAL WALL SECTIONS (MAX. HEIGHT) CONSTRUCTION FOR THE SEGMENTAL PRECAST BLOCK WALL (8" UNITS).
 2. SEE MANUFACTURER INFORMATION FOR ADDITIONAL DETAIL ON THE SEGMENTAL PRECAST BLOCK WALL.
 3. SUB CUT TO DEPTH "D" AS REQUIRED AND REPLACE WITH SUITABLE COMPACTED STRUCTURAL FILL TO ACHIEVE THE REQUIRED BEARING CAPACITY AS DIRECTED BY SITE GEOTECHNICAL ENGINEER. THE STRUCTURAL FILL IS TO BE COMPACTED TO A MINIMUM 95% STANDARD PROCTER DENSITY.
 4. APPROXIMATE LIMITS OF EXCAVATION VARIES WHEN SUBCUT IS REQUIRED.
 5. COORDINATE WITH ENGINEER TO VERIFY LOCATION AND BLOCK COLOR.
 6. 4" DRAIN TILE PRF. ADS N-12 W/ GEOTECH. WRAP TO BE PROVIDED AS DIRECTED BY THE ENGINEER.
 6. VERIFY EXISTING DRIVEWAY ELEVATIONS. CORRELATE PROPOSED SIDEWALK AND RETAINING WALL ELEVATIONS WITH EXISTING DRIVEWAY ELEVATIONS.



NOTE:
1. SECURE ALL CAP UNITS

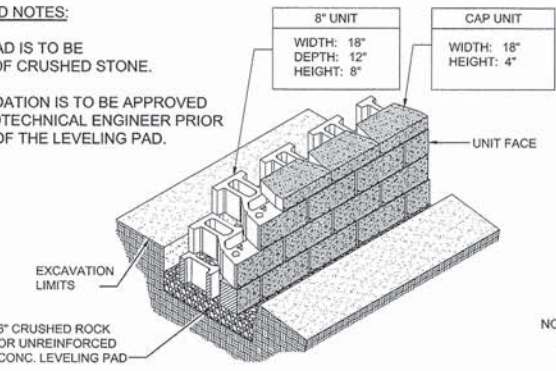
TOP OF WALL STEPS



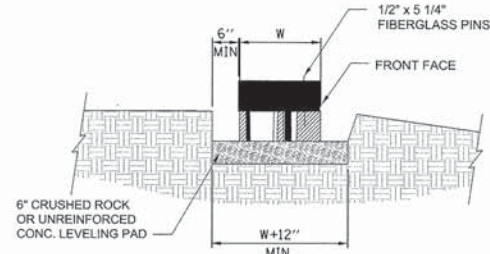
ELEVATION

BASE LEVELING PAD NOTES:

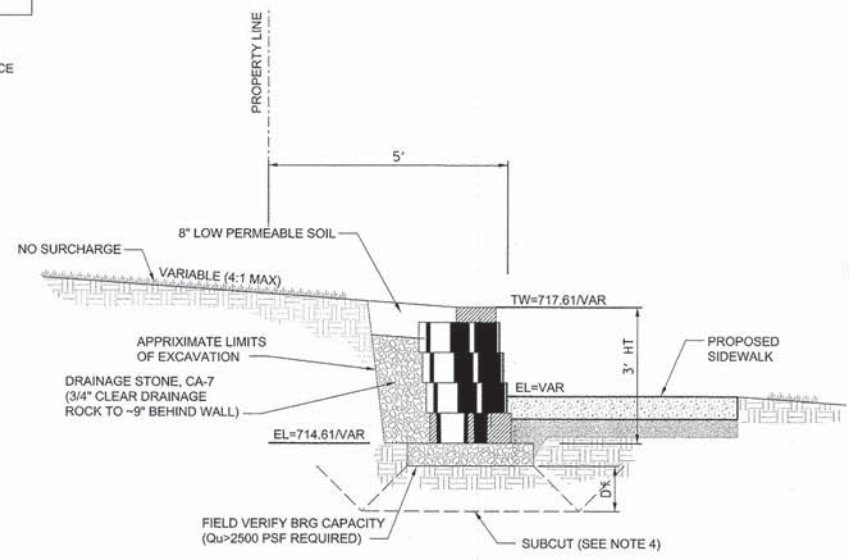
1. THE LEVELING PAD IS TO BE CONSTRUCTED OF CRUSHED STONE.
2. THE BASE FOUNDATION IS TO BE APPROVED BY THE SITE GEOTECHNICAL ENGINEER PRIOR TO PLACEMENT OF THE LEVELING PAD.



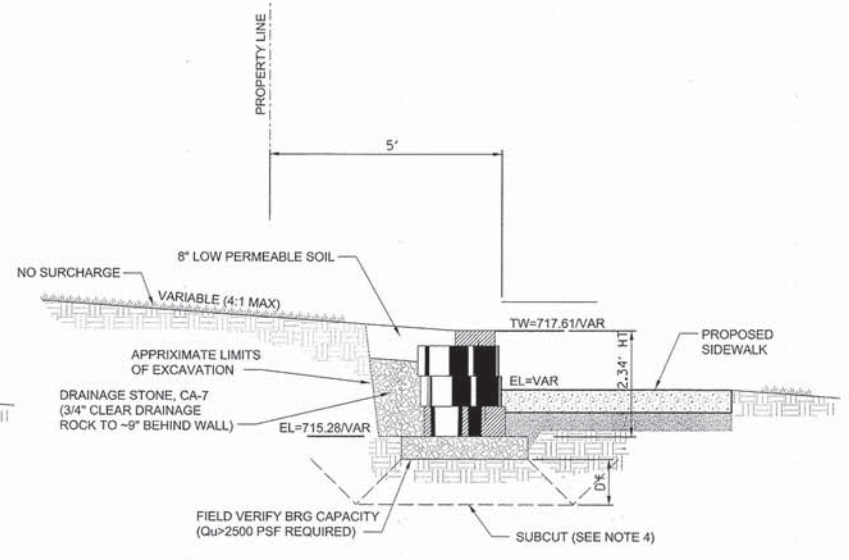
BASE PAD ISOMETRIC SECTION VIEW



SECTION LEVELING PAD DETAIL



SECTION A-A
TYPICAL
(Unit - 1" Setback)



SECTION B-B
TYPICAL
(Unit - 1" Setback)

FILE NAME =	USER NAME = .USER.	DESIGNED -	REVISED -
N:\dgn\WF\587 SRTS Sidewalk\shets\W	587_11RetainingWall.dgn	CHECKED -	REVISED -
	PLOT SCALE = 10.00 ft / in.	DRAWN -	REVISED -
	PLOT DATE = 12/12/2014	DATE - APR 2013	REVISED -

STATE OF ILLINOIS
DEPARTMENT OF TRANSPORTATION

RETAINING WALL PLAN AND ELEVATION
OS251 PARK STREET

SCALE: 1"=10' SHEET NO. 11 OF 23 SHEETS STA. TO STA.

F.A.U. RTE.	SECTION	COUNTY	TOTAL SHEETS	SHEET NO.
	12-00048-00-SW	DUPAGE	23	11
CONTRACT NO. 61B01			ILLINOIS FED. AID PROJECT	



STRIPING IMPROVEMENT
LOCATIONS (TYP)
SEE SHEETS 13 & 14 FOR DETAILS

FILE NAME *	USER NAME = .USER_	DESIGNED -	REVISED -
N:\dgn\WF\587 SRTS Sidewalk\sheet\1	587_125stripingLocationPlan.dgn	CHECKED -	REVISED -
	PLOT SCALE = 200.00 ft. / in.	DRAWN -	REVISED -
	PLOT DATE = 12/12/2014	DATE - APR 2013	REVISED -

**STATE OF ILLINOIS
DEPARTMENT OF TRANSPORTATION**

STRIPING LOCATION MAP

SCALE: 1"=200' SHEET NO. 12 OF 23 SHEETS STA. TO STA.

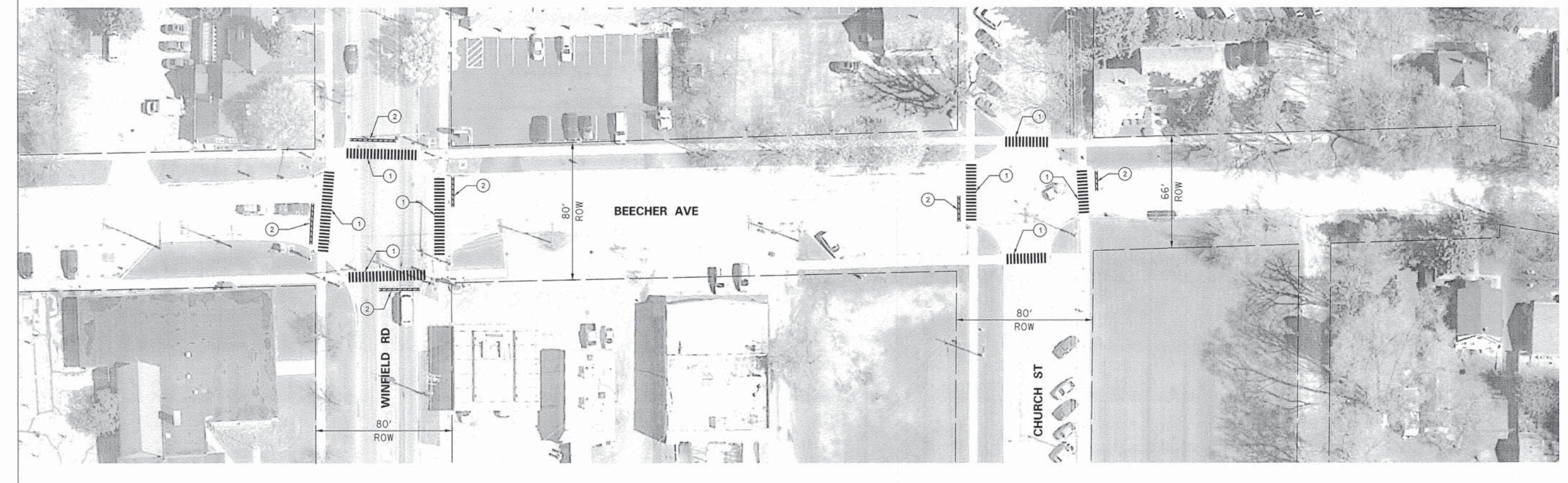
F.A.U. RTE.	SECTION	COUNTY	TOTAL SHEETS	SHEET NO.
	12-00048-00-SW	DuPAGE	23	12
CONTRACT NO. 61B01			ILLINOIS FED. AID PROJECT	



PAVEMENT MARKING LEGEND

① THERMOPLASTIC PAVEMENT MARKING, 12" SOLID WHITE LINE

② THERMOPLASTIC PAVEMENT MARKING, 24" SOLID WHITE LINE

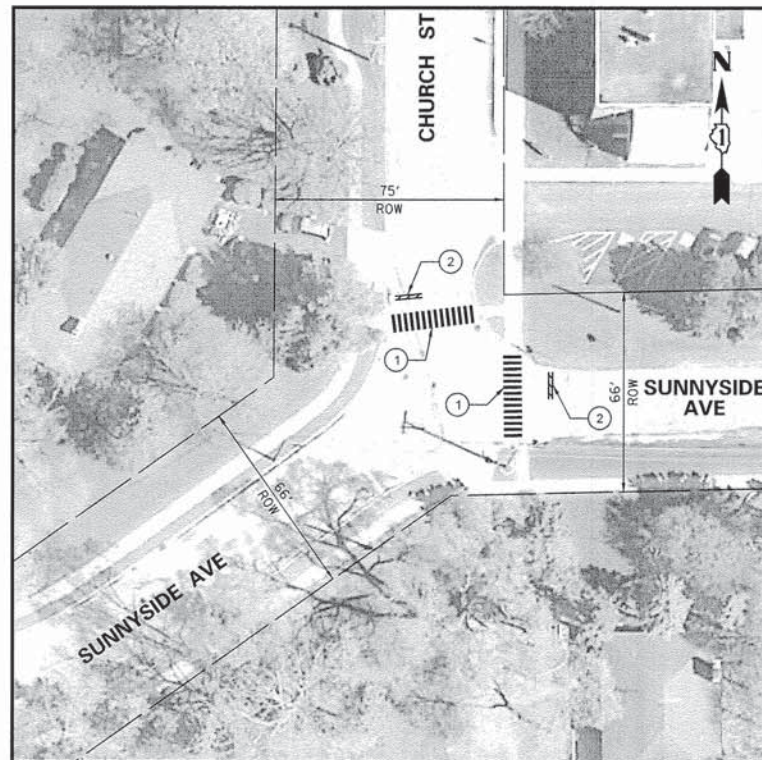
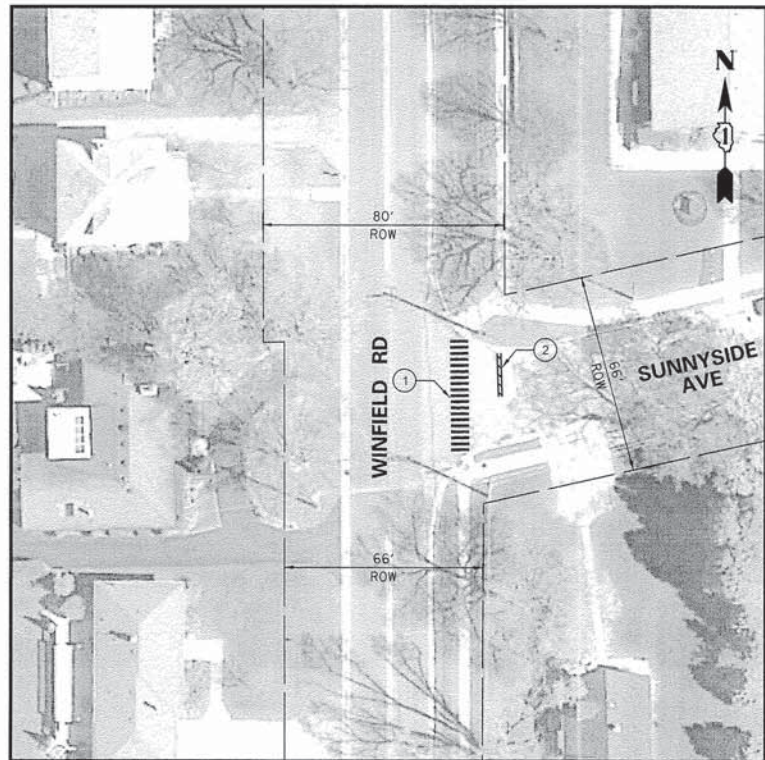
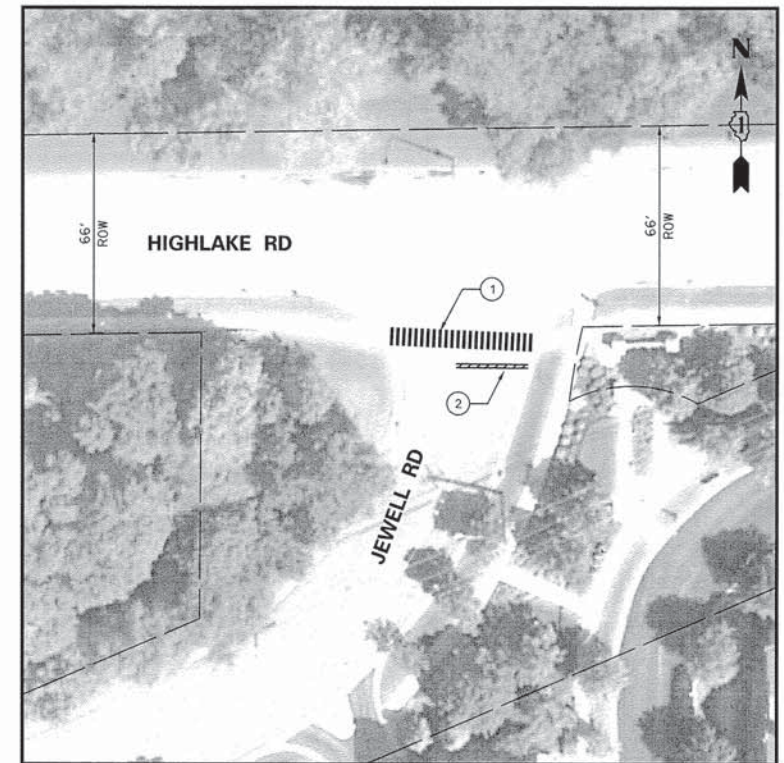
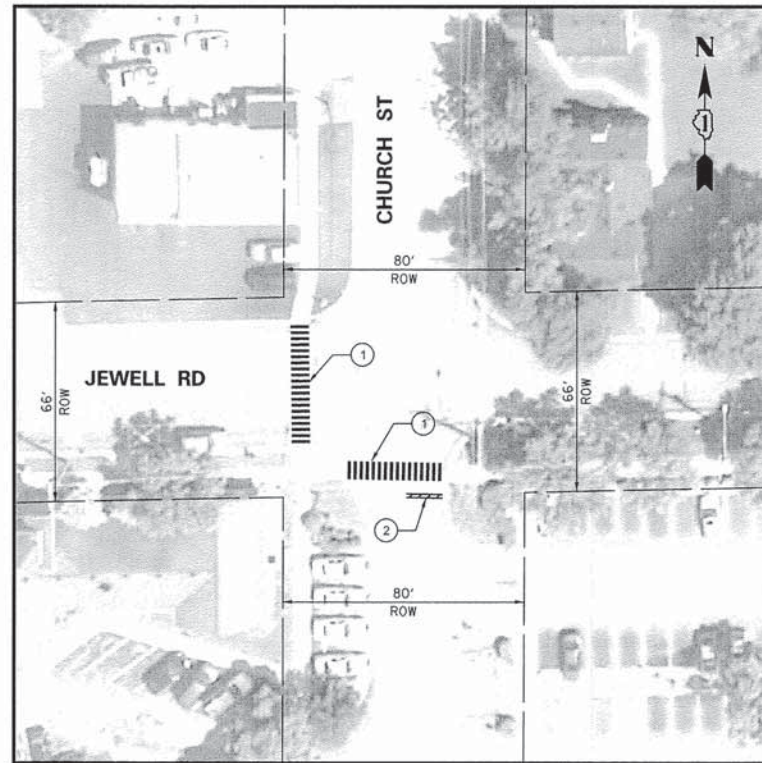


FILE NAME =	USER NAME = .USER.	DESIGNED =	REVISED =
N:\dgn\WF\587 SRTS Sidewalk\sheet\587.135stripingPlan01.dgn		CHECKED =	REVISED =
PLOT SCALE = 30.00 ft / in.		DRAWN =	REVISED =
PLOT DATE = 12/12/2014		DATE = APR 2013	REVISED =

**STATE OF ILLINOIS
DEPARTMENT OF TRANSPORTATION**

BEECHER AVE STRIPING PLAN		
SCALE: 1"=30'	SHEET NO. 13 OF 23 SHEETS	STA. TO STA.

F.A.U. RTE.	SECTION	COUNTY	TOTAL SHEETS	SHEET NO.
	12-00048-00-SW	DuPAGE	23	13
CONTRACT NO. 61B01				
ILLINOIS FED. AID PROJECT				



- PAVEMENT MARKING LEGEND**
- ① THERMOPLASTIC PAVEMENT MARKING, 12" SOLID WHITE LINE
 - ② THERMOPLASTIC PAVEMENT MARKING, 24" SOLID WHITE LINE

FILE NAME = N:\dgn\WF\WF587 SRTS Sidewalk\sheet\WF587_145r-stripingPlan02.dgn	USER NAME = .USER_	DESIGNED -	REVISED -
PLOT SCALE = 30,00 ft / in.		CHECKED -	REVISED -
PLOT DATE = 12/12/2014		DRAWN -	REVISED -
		DATE = APR 2013	REVISED -

**STATE OF ILLINOIS
DEPARTMENT OF TRANSPORTATION**

STRIPING PLAN

SCALE: 1"=30' SHEET NO. 14 OF 23 SHEETS STA. TO STA.

F.A.U. RTE.	SECTION	COUNTY	TOTAL SHEETS	SHEET NO.
	12-00048-00-SW	DuPAGE	23	14
				CONTRACT NO. 61B01
ILLINOIS FED. AID PROJECT				

STORM WATER POLLUTION PREVENTION PLAN

THE FOLLOWING PLAN IS ESTABLISHED AND INCORPORATED IN THE PROJECT TO DIRECT THE CONTRACTOR IN THE PLACEMENT OF TEMPORARY AND PERMANENT EROSION CONTROL SYSTEMS AND TO PROVIDE A STORM WATER POLLUTION PREVENTION PLAN FOR COMPLIANCE UNDER N.P.D.E.S.

THE PURPOSE OF THIS PLAN IS TO MINIMIZE EROSION WITHIN THE CONSTRUCTION SITE AND TO LIMIT SEDIMENTS AND POLLUTANTS FROM LEAVING THE CONSTRUCTION SITE BY UTILIZING PROPER TEMPORARY EROSION CONTROL SYSTEMS AND PROVIDING GROUND COVER WITHIN A REASONABLE AMOUNT OF TIME.

CERTAIN EROSION CONTROL FACILITIES SHALL BE INSTALLED BY THE CONTRACTOR AT THE BEGINNING OF CONSTRUCTION. OTHER ITEMS SHALL BE INSTALLED BY THE CONTRACTOR AS REQUIRED OR AS DIRECTED BY THE ENGINEER OR ON A CASE BY CASE BASIS DEPENDING ON THE CONTRACTOR'S SEQUENCE OF ACTIVITIES, TIME OF YEAR, AND EXPECTED WEATHER CONDITIONS.

THE CONTRACTOR SHALL INSTALL PERMANENT EROSION CONTROL SYSTEMS AND SEEDING WITHIN A TIME FRAME SPECIFIED HEREIN AND AS DIRECTED BY THE ENGINEER AND AS SHOWN IN THE ENGINEERING PLANS. THEREFORE MINIMIZING THE AMOUNT OF AREA SUSCEPTIBLE TO EROSION AND REDUCING THE AMOUNT OF TEMPORARY SEEDING. THE ENGINEER WILL DETERMINE IF ANY TEMPORARY EROSION CONTROL SYSTEMS SHOWN IN THE PLAN CAN BE DELETED AND IF ANY ADDITIONAL TEMPORARY EROSION CONTROL SYSTEMS, WHICH ARE NOT INCLUDED IN THIS PLAN, SHALL BE ADDED. THE CONTRACTOR SHALL PERFORM ALL WORK AS DIRECTED BY THE ENGINEER AND AS SHOWN IN THE PLANS.

THIS PLAN SHALL BE FOLLOWED FOR ALL SITE IMPROVEMENTS. AN EROSION CONTROL PLAN HAS BEEN PREPARED FOR THIS PROJECT AND IS PART OF THE APPROVED ENGINEERING PLANS. THE CONTRACTOR SHALL HAVE A COPY OF THE APPROVED PLANS INCLUDING THE EROSION CONTROL PLAN AND A COPY OF THE STORM WATER POLLUTION PREVENTION PLAN AT ALL TIMES. THE DETAILS INCLUDED IN THIS STORM WATER POLLUTION PREVENTION PLAN ARE INTENDED TO SUPPLEMENT THE DETAILS PROVIDED IN THE APPROVED PLANS AND PROVIDE RECOMMENDATION ALTERNATIVES THAT MAY BE USED TO PROVIDE EROSION AND SEDIMENTATION CONTROL AS NEEDED.

SITE DESCRIPTION OF CONSTRUCTION ACTIVITIES:

1. THE PROJECT CONSISTS OF IMPROVEMENTS TO EXISTING ROADWAYS, PAVED DRIVEWAYS, SIDEWALKS AND STORM SEWER IMPROVEMENTS.
2. THE SITE CONSTRUCTION ACTIVITIES WILL CONSIST OF THE FOLLOWING: PAVEMENT REMOVAL, MASS GRADING, PAVEMENT CONSTRUCTION, INSTALLATION OF STORM SEWER, PARKWAY RESTORATION ALONG WITH SOIL EROSION AND SEDIMENTATION MEASURES.

DESCRIPTION OF INTENDED SEQUENCE FOR MAJOR CONSTRUCTION ACTIVITIES WHICH WILL DISTURB SOILS FOR MAJOR PORTIONS OF THE CONSTRUCTION SITE:

- INSTALL SILT FENCE AT LOCATIONS INDICATED ON THE PLANS.
- STRIP TOPSOIL FROM PROPOSED SITE.
- CUT & FILL SITE TO PROPOSED SUB-GRADE.
- PLACE AND MAINTAIN ALL TEMPORARY EROSION CONTROL MEASURES INCLUDING DITCH CHECKS, INLET AND PIPE PROTECTION, TEMPORARY SEEDING, ETC.
- CONSTRUCT UNDERGROUND IMPROVEMENTS, STORM SEWER, SIDEWALK, ETC.
- COMPLETE TOPSOIL PLACEMENT AND PERMANENT EROSION CONTROL MEASURES INCLUDING TOPSOIL/SEEDING AND EROSION CONTROL BLANKET.

AREA OF CONSTRUCTION SITE:

THE TOTAL AREA OF THE CONSTRUCTION SITE IS ESTIMATED TO BE 0.5 ACRES OF WHICH 0.5 ACRES WILL BE DISTURBED BY EXCAVATION, GRADING, AND OTHER ACTIVITIES.

OTHER REPORTS, STUDIES AND PLANS WHICH AID IN THE DEVELOPMENT OF THE STORM WATER POLLUTION PREVENTION PLAN AS REFERENCED DOCUMENTS

1. INFORMATION OF THE SOILS AND TERRAIN WITHIN THE SITE WAS OBTAINED FROM TOPOGRAPHIC SURVEYS THAT WERE UTILIZED FOR THE DEVELOPMENT OF THE PROPOSED TEMPORARY EROSION CONTROL SYSTEMS.
2. PROJECT PLAN DOCUMENTS, SPECIFICATIONS AND SPECIAL PROVISIONS, AND PLAN DRAWINGS INDICATING DRAINAGE PATTERNS AND APPROXIMATE SLOPES ANTICIPATED AFTER GRADING ACTIVITIES WERE UTILIZED FOR THE PROPOSED PLACEMENT OF THE TEMPORARY EROSION CONTROL SYSTEM.

CONTROLS - EROSION CONTROL AND SEDIMENT CONTROL:

DESCRIPTION OF STABILIZATION PRACTICES AT THE BEGINNING OF CONSTRUCTION:

1. THE DRAWINGS, SPECIFICATIONS AND SPECIAL PROVISIONS WILL ENSURE THAT EXISTING VEGETATION IS PRESERVED WHERE ATTAINABLE AND DISTURBED PORTIONS OF THE SITE WILL BE STABILIZED. STABILIZATION PRACTICES INCLUDE: TEMPORARY SEEDING, PERMANENT SEEDING, MULCHING, PRESERVATION OF MATURE VEGETATION AND OTHER APPROPRIATE MEASURES AS DIRECTED BY THE ENGINEER OR. STABILIZATION MEASURES SHALL BE INITIATED AS SOON AS PRACTICABLE IN PORTIONS OF THE SITE WHERE CONSTRUCTION ACTIVITIES HAVE TEMPORARILY OR PERMANENTLY CEASED, BUT IN NO CASE MORE THAN 7 DAYS AFTER THE CONSTRUCTION ACTIVITY IN THAT PORTION OF THE SITE HAS TEMPORARILY OR PERMANENTLY CEASED. SEE SOIL PROTECTION SCHEDULE FOR RECOMMENDATIONS.

A. AREAS OF EXISTING VEGETATION (WOOD AND GRASSLANDS) OUTSIDE THE PROPOSED CONSTRUCTION LIMITS SHALL BE IDENTIFIED BY THE ENGINEER FOR PRESERVING AND SHALL BE PROTECTED FROM CONSTRUCTION ACTIVITIES.

B. AS SOON AS REASONABLE ACCESS IS AVAILABLE TO ALL LOCATIONS WHERE WATER DRAINS AWAY FROM THE PROJECT, TEMPORARY DITCH CHECKS, INLET AND PIPE PROTECTION, AND PERIMETER EROSION BARRIER UTIL SHALL BE INSTALLED AS CALLED OUT IN THIS PLAN AND DIRECTED BY THE ENGINEER.

C. BARE AND SPARSELY VEGETATED GROUND IN HIGH ERODABLE AREAS AS DETERMINED BY THE ENGINEER SHALL BE TEMPORARILY SEEDED AT THE BEGINNING OF CONSTRUCTION WHERE NO CONSTRUCTION ACTIVITIES ARE EXPECTED WITHIN SEVEN DAYS.

D. AT LOCATIONS WHERE A SIGNIFICANT AMOUNT OF WATER DRAINS INTO THE CONSTRUCTION ZONE FROM OUTSIDE AREAS (ADJACENT LANDOWNERS), TEMPORARY DITCH CHECKS WILL BE UTILIZED TO LOCALLY DIVERT WATER, REDUCE FLOW RATES, AND COLLECT OUTSIDE SILTATION INSIDE THE PROPERTY.

2. ESTABLISHMENT OF THESE TEMPORARY EROSION CONTROL MEASURES WILL HAVE ADDITIONAL BENEFITS TO THE PROJECT. DESIRABLE GRASS SEED WILL BECOME ESTABLISHED IN THESE AREAS AND WILL SPREAD SEEDS ONTO THE CONSTRUCTION SITE UNTIL PERMANENT SEEDING/MOWING AND OVERSEEDING CAN BE COMPLETED.

DESCRIPTION OF STABILIZATION PRACTICES DURING CONSTRUCTION:

DURING CONSTRUCTION, AREAS OUTSIDE THE CONSTRUCTION LIMITS AS OUTLINED PREVIOUSLY HEREIN SHALL BE PROTECTED. THE CONTRACTOR SHALL NOT USE THIS AREA FOR STAGING EXCEPT AS DESCRIBED ON THE PLANS AND DIRECTED BY THE ENGINEER, PARKING OF VEHICLES, OR CONSTRUCTION EQUIPMENT STORAGE OF MATERIALS, OR OTHER CONSTRUCTION RELATED ACTIVITIES.

WITHIN THE CONSTRUCTION LIMITS, AREAS WHICH MAY BE SUSCEPTIBLE TO EROSION AS DETERMINED BY THE ENGINEER SHALL REMAIN UNDISTURBED UNTIL FULL SCALE CONSTRUCTION IS UNDERWAY TO PREVENT UNNECESSARY SOIL EROSION.

EARTH STOCKPILES SHALL BE TEMPORARILY SEEDED IF THEY ARE TO REMAIN UNUSED FOR MORE THAN SEVEN DAYS.

AS CONSTRUCTION PROCEEDS, THE CONTRACTOR SHALL INSTITUTE THE FOLLOWING AS DIRECTED BY THE ENGINEER.

PLACE TEMPORARY EROSION CONTROL FACILITIES AT LOCATIONS SHOWN ON THE PLANS.

TEMPORARILY SEED ERODABLE BARE EARTH ON A WEEKLY BASIS TO MINIMIZE THE AMOUNT OF ERODABLE SURFACE AREA WITHIN THE CONTRACT LIMITS.

CONSTRUCT ROADSIDE DITCHES AND PROVIDE TEMPORARY EROSION CONTROL SYSTEMS.

TEMPORARILY DIVERT WATER AROUND PROPOSED CULVERT LOCATIONS.

EXCAVATED AREAS AND EMBANKMENT SHALL BE PERMANENTLY SEEDED IMMEDIATELY AFTER FINAL GRADING. IF NOT, THEY SHALL BE TEMPORARILY SEEDED IF NO CONSTRUCTION ACTIVITY IN THE AREA IS PLANNED FOR 7 DAYS.

CONSTRUCTION EQUIPMENT SHALL BE STORED AND FUELED ONLY AT DESIGNATED LOCATIONS. ALL NECESSARY MEASURES SHALL BE TAKEN TO CONTAIN ANY FUEL OR OTHER POLLUTANT IN ACCORDANCE WITH EPA WATER QUALITY REGULATIONS. LEAKING EQUIPMENT OR SUPPLIES SHALL BE IMMEDIATELY REPAIRED OR REMOVED FROM THIS SITE.

THE CONSTRUCTION MANAGER IS RESPONSIBLE FOR INSPECTING THE PROJECT DAILY DURING CONSTRUCTION ACTIVITIES. INSPECTION SHALL ALSO BE DONE WEEKLY AND AFTER RAINS OF 1/2 INCH OR GREATER OR EQUIVALENT SNOWFALL AND DURING THE WINTER SHUTDOWN PERIOD. THE PROJECT SHALL ADDITIONALLY BE INSPECTED BY THE CONSTRUCTION FIELD ENGINEER ON A WEEKLY BASIS TO DETERMINE THAT EROSION CONTROL EFFORTS ARE IN PLACE AND EFFECTIVE AND IF OTHER EROSION CONTROL WORK IS NECESSARY.

SEDIMENT COLLECTED DURING CONSTRUCTION OF THE VARIOUS TEMPORARY EROSION CONTROL SYSTEMS SHALL BE DISPOSED OF ON THE SITE ON A REGULAR BASIS OR AS DIRECTED BY THE ENGINEER. THE COST OF THIS MAINTENANCE SHALL BE INCIDENTAL TO THE UNIT BID PRICE FOR EROSION CONTROL.

THE TEMPORARY EROSION CONTROL SYSTEMS SHALL BE REMOVED AS DIRECTED BY THE ENGINEER AFTER USE IS NO LONGER NEEDED OR NO LONGER FUNCTIONING. THE COST OF THIS REMOVAL SHALL BE INCIDENTAL TO THE UNIT BID PRICE FOR VARIOUS TEMPORARY EROSION CONTROL PAY ITEMS.

DESCRIPTION OF STRUCTURAL PRACTICES AFTER FINAL GRADING:

TEMPORARY EROSION CONTROL SYSTEMS SHALL BE LEFT IN PLACE WITH PROPER MAINTENANCE UNTIL PERMANENT EROSION CONTROL IS IN PLACE AND WORKING PROPERLY AND ALL PROPOSED TURF AREAS SEEDED AND ESTABLISHED.

ONCE PERMANENT EROSION CONTROL SYSTEMS AS PROPOSED IN THE PLANS ARE FUNCTIONAL AND ESTABLISHED, TEMPORARY ITEMS SHALL BE REMOVED, CLEANED UP AND DISTURBED TURF RESEEDED.

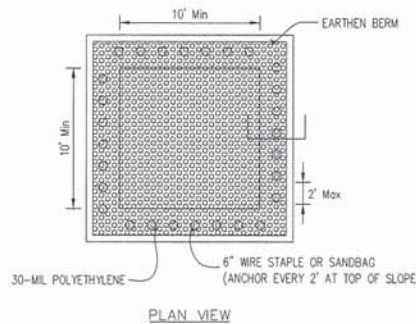
MAINTENANCE AFTER CONSTRUCTION

CONSTRUCTION IS COMPLETE AFTER ACCEPTANCE BY THE OWNER. MAINTENANCE UP TO THIS DATE WILL BE BY THE CONTRACTOR.

MISCELLANEOUS:

TEMPORARY EROSION CONTROL SEEDING SHALL BE APPLIED AT A RATE OF 100 LBS./ACRE.

SEDIMENT COLLECTED DURING CONSTRUCTION BY THE VARIOUS TEMPORARY EROSION CONTROL SYSTEMS SHALL BE DISPOSED OF ON THE SITE ON A REGULAR BASIS AND IN GENERAL BE PLACED BACK TO THE LOCATION FROM WHERE IT WAS REMOVED.



NOTES:

1. Maintaining temporary concrete washout facilities shall include removing and disposing of hardened concrete and/or slurry and returning the facilities to a functional condition.
2. Facility shall be cleaned or reconstructed in a new area once washout becomes two-thirds full.

**STATE OF ILLINOIS
DEPARTMENT OF TRANSPORTATION**

SOIL PROTECTION CHART

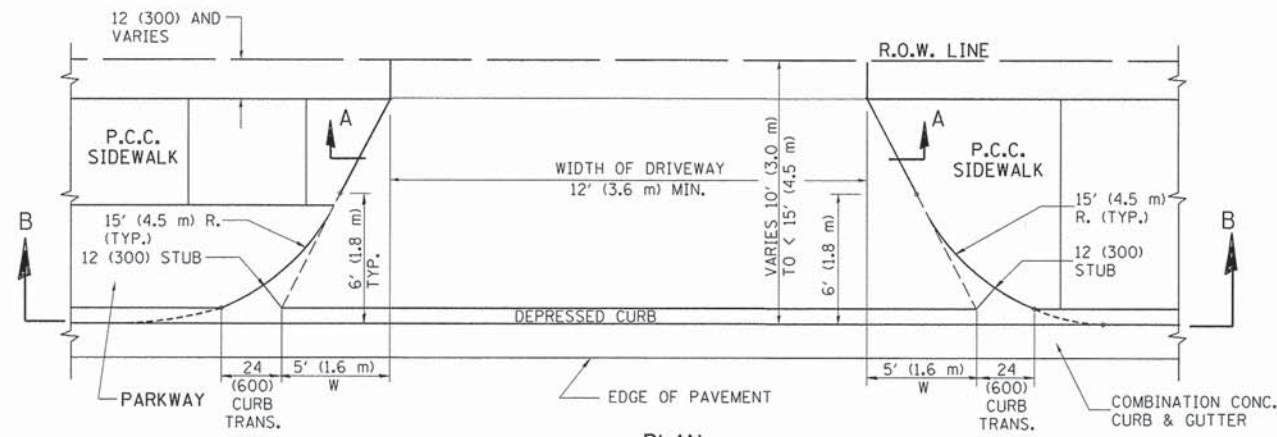
STABILIZATION TYPE	JAN.	FEB.	MAR.	APR.	MAY	JUNE	JULY	AUG.	SEPT.	OCT.	NOV.	DEC.
PERMANENT SEEDING			A			*	*					
DORMANT SEEDING	B										B	
TEMPORARY SEEDING			C			D						
SODDING			E**									
MULCHING	F											

- A KENTUCKY BLUEGRASS 90 LBS/ACRE MIXED WITH PERENNIAL RYEGRASS 30 LBS/ACRE
- B KENTUCKY BLUEGRASS 135 LBS/ACRE MIXED WITH PERENNIAL RYEGRASS 45 LBS/ACRE + STRAW MULCH 2 TONS/ACRE
- C SPRING OATS 100 LBS/ACRE
- D WHEAT OR CEREAL RYE 150 LBS/ACRE
- E SOD
- F STRAW MULCH 2 TONS/ACRE

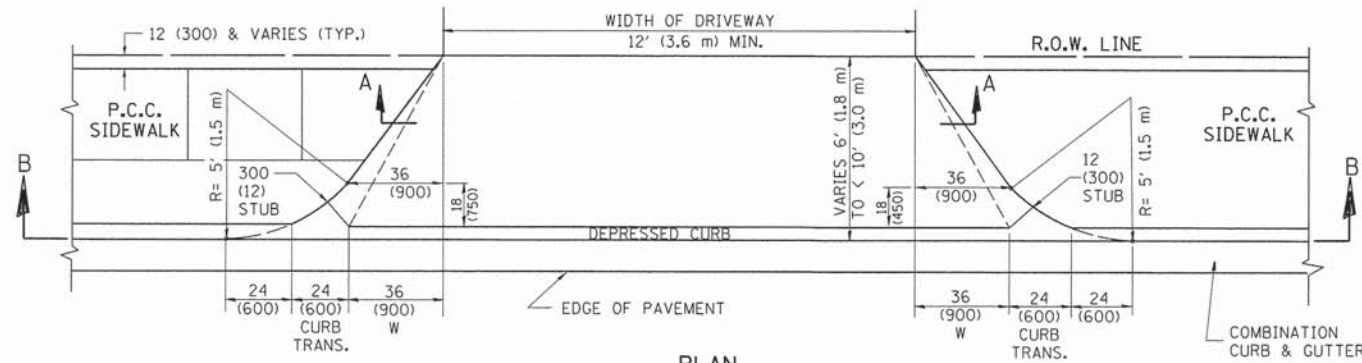
- * IRRIGATION NEEDED DURING JUNE AND JULY.
- ** IRRIGATION NEEDED FOR 2 TO 3 WEEKS AFTER APPLYING SOD

FILE NAME =	USER NAME = .USER.	-	REVISED 1 - MAR 2013
N:\dgn\WF587 SRTS Sidewalk\sheet\WF587_15Erosion Notes and Details.dgn		-	REVISED -
PLOT SCALE = 30.00 ft / in.		-	REVISED -
PLOT DATE = 12/12/2014		- APR 2013	REVISED -

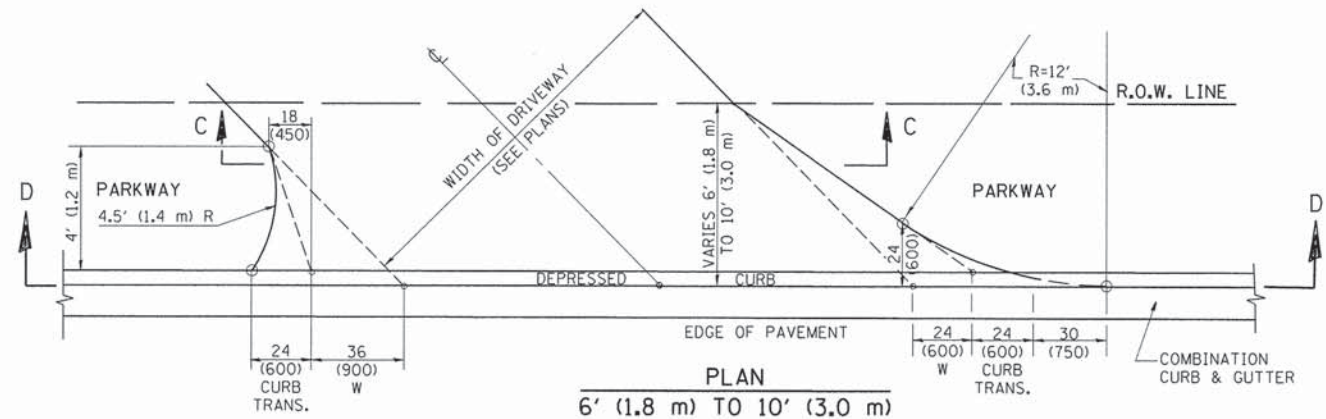
EROSION AND SEDIMENTATION CONTROL NOTES AND DETAILS		F.A.U. RTE.	SECTION	COUNTY	TOTAL SHEETS	SHEET NO.
SCALE: NONE	SHEET No. 15 OF 23 SHEETS		12-00048-00-SW	DuPAGE	23	15
						CONTRACT NO. 61B01
ILLINOIS FED. AID PROJECT						



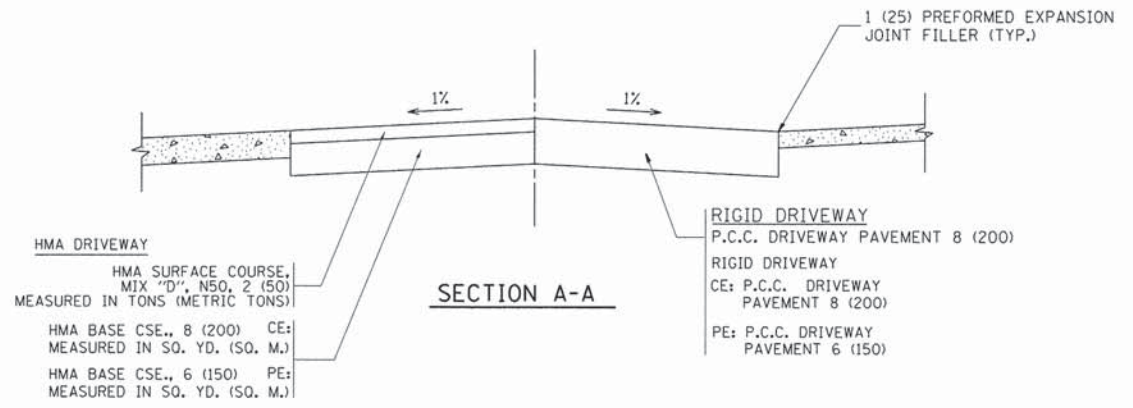
PLAN
10' (3.0 m) TO < 15' (4.5 m)



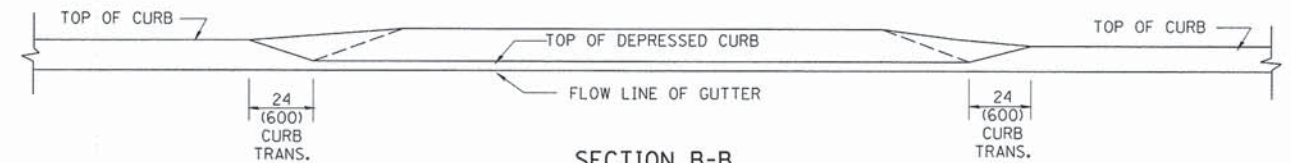
PLAN
6' (1.8 m) TO < 10' (3.0 m)



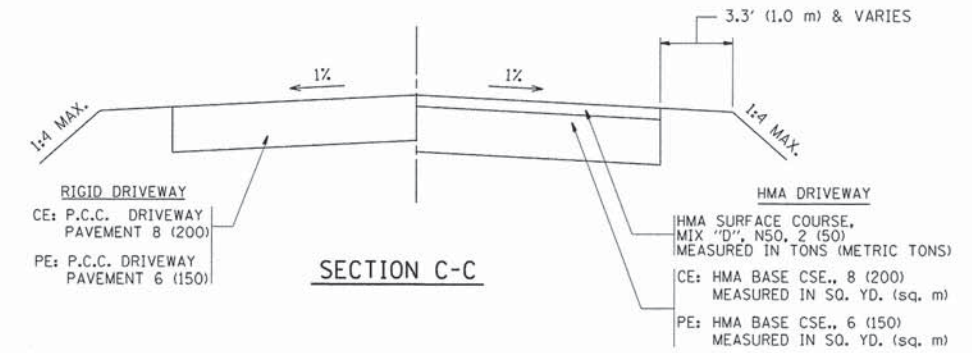
PLAN
6' (1.8 m) TO 10' (3.0 m)



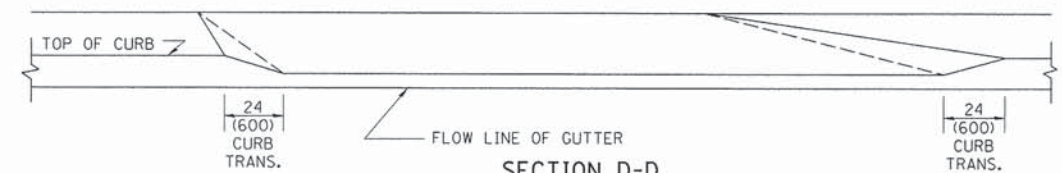
SECTION A-A



SECTION B-B



SECTION C-C



SECTION D-D

GENERAL NOTES

DRIVEWAY SLOPES, LOCATIONS, & GEOMETRIC LAYOUT SHALL BE IN ACCORDANCE WITH THE LATEST EDITION OF THE "HANDBOOK FOR POLICY ON PERMITS FOR ACCESS DRIVEWAYS TO STATE HIGHWAYS". FOR FURTHER LAYOUT REQUIREMENTS, REFER TO ILLUSTRATION 10 IN THE PERMIT HANDBOOK. WHERE SIDEWALKS EXIST, DRIVEWAYS SHALL BE REPLACED WITH RIGID PAVEMENT. WHERE NO SIDEWALKS EXIST, DRIVEWAYS SHALL BE REPLACED IN KIND. SIDEWALK CROSS SLOPE THRU DRIVEWAY AREA TO BE A MAXIMUM OF 1:50.

WHEN THE DISTANCE BETWEEN R.O.W. AND THE BACK OF CURB IS EQUAL TO OR LESS THAN 8' (2.4 m), THE P.C.C. SIDEWALK SHALL EXTEND TO THE BACK OF CURB.

THE RESIDENT ENGINEER SHALL CONTACT THE TRAFFIC PERMIT OFFICE AT 847/ 705-4131 FOR ANY QUESTIONS ON DRIVEWAYS SHOWN IN THE PLANS; SPECIFICALLY IN REFERENCE TO ADDITIONAL AND/OR RELOCATION/REMOVAL OF A DRIVEWAY.

COMBINATION CONCRETE CURB & GUTTER SHALL BE MEASURED STRAIGHT ACROSS THE DRIVEWAY. NO ADDITIONAL COMPENSATION WILL BE ALLOWED FOR THE CURB & GUTTER TRANSITION.

THE 1 (25) PREFORMED EXPANSION JOINT FILLER WILL NOT BE PAID SEPARATELY, BUT SHALL BE CONSIDERED INCLUDED IN THE COST OF THE P.C.C. DRIVEWAY PAVEMENT OR P.C.C. SIDEWALK.

"W" VARIES FROM 36 (900) TO 5' (1.5 m) PROPORTIONAL TO THE LENGTH (L), FROM 6' (1.8 m) TO 10' (3 m).

ALL DIMENSIONS ARE IN INCHES (MILLIMETERS) UNLESS OTHERWISE NOTED.

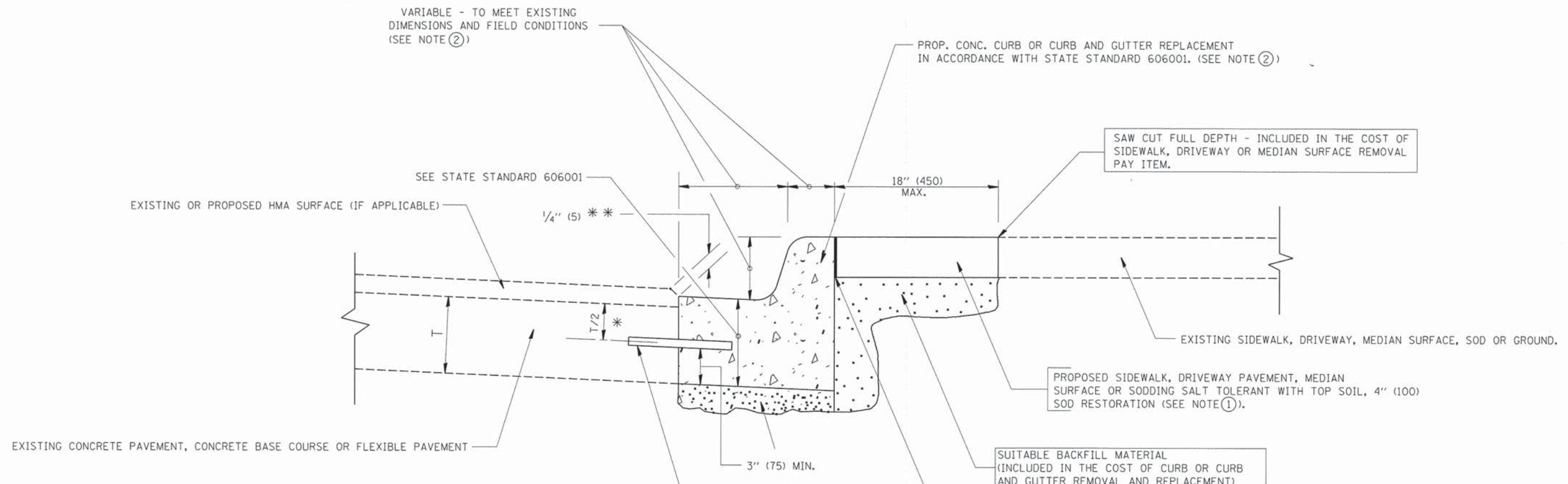
FILE NAME =	USER NAME = .USER.	DESIGNED - R. SHAH	REVISED - M. GOMEZ 04-06-01
N:\dgn\WF\WF587 SRTS Sidewalk\sheets\WF587_16Driveway Details.dgn	587_16Driveway Details.dgn	DRAWN -	REVISED - P. LOFLEUR 04-15-03
PLOT SCALE = 1/8" = 1'-0"		CHECKED -	REVISED - R. BORO 01-01-07
PLOT DATE = 12/12/2014		DATE - 11-06-95	REVISED - R. BORO 01-01-07

STATE OF ILLINOIS
DEPARTMENT OF TRANSPORTATION

DRIVEWAY DETAILS			
DISTANCE BETWEEN ROW AND FACE OF CURB < 15' (4.5 m)			
SCALE: NONE	SHEET NO. 1 OF 1 SHEETS	STA.	TO STA.

F.A.U. RTE.	SECTION	COUNTY	TOTAL SHEETS	SHEET NO.
	12-00048-00-SW	DUPAGE	23	16
BD400-02 (BD-02)			CONTRACT NO. 61B01	
FED. ROAD DIST. NO. 1 [ILLINOIS] FED. AID PROJECT				

WF587_16Driveway Details.dgn 12/12/2014 10:25:48 AM



- * 3" (75) MINIMUM FROM TOP AND BOTTOM OF THE CONCRETE PAVEMENT OR BASE COURSE.
 - * * IF THE FINAL SURFACE OF THE PAVEMENT IS CONCRETE, THE GUTTER IS TO BE FLUSH WITH THE PAVEMENT.
- NOTE: ① SIDEWALK, DRIVEWAY PAVEMENT OR MEDIAN SURFACE SHALL BE SIMILAR TO THE MATERIAL BEING REMOVED AND WILL BE PAID FOR SEPARATELY.
SODDING, SALT TOLERANT AND TOP SOIL, FURNISH AND PLACE 4" WILL BE PAID FOR SEPARATELY.
- ② FERTILIZER FOR THE PLACEMENT OF THE SOD IS NOT REQUIRED
- ③ CURB OR CURB AND GUTTER REPLACEMENT SHALL MATCH THE SHAPE OF THE EXISTING CURB OR CURB AND GUTTER UNLESS OTHERWISE SPECIFIED.
- ④ FOR CURB OR CURB AND GUTTER REMOVAL AND REPLACEMENT ADJACENT TO FLEXIBLE PAVEMENT DELETE EPOXY COATED TIE BARS.
- ⑤ LONGITUDINAL BARS, IF ENCOUNTERED IN THE EXISTING CURB OR CURB AND GUTTER, ARE NOT TO BE REPLACED. CUTTING AND REMOVING LONGITUDINAL BARS SHALL BE INCLUDED IN THE COST OF CURB OR CURB AND GUTTER REMOVAL AND REPLACEMENT.
- ⑥ THE COST OF HMA SURFACE REMOVAL IN THE EXISTING GUTTER FLAG SHALL BE INCLUDED IN THE COST OF THE CURB AND GUTTER REMOVAL AND REPLACEMENT.
- ⑦ THE REMOVAL AND REPLACEMENT OF THE EXISTING CURB OR CURB AND GUTTER SHALL BE DONE IN ACCORDANCE WITH THE APPLICABLE PORTIONS OF SECTION 440 AND 606 OF THE STANDARD SPECIFICATIONS.
- ⑧ THE LOCATIONS OF REMOVAL AND REPLACEMENT OF EXISTING CURB OR CURB AND GUTTER SHALL BE DETERMINED BY THE RESIDENT ENGINEER AT THE TIME OF CONSTRUCTION.

- PROPOSED 3/4" (20) PREFORMED EXPANSION JOINT AT CONCRETE SIDEWALKS, DRIVEWAYS, AND MEDIANS. (INCLUDED IN THE COST OF CURB OR CURB AND GUTTER REMOVAL AND REPLACEMENT.)
- UNSUITABLE SUB-BASE MATERIAL TO BE REMOVED, IF DIRECTED BY THE ENGINEER, SHALL BE REPLACED WITH EITHER SUB-BASE GRANULAR MATERIAL, TYPE B OR ADDITIONAL THICKNESS OF CONCRETE.
- REMOVAL AND REPLACEMENT 4" (100) OR LESS IS INCLUDED IN THE COST OF CURB OR CURB AND GUTTER REMOVAL AND REPLACEMENT.
- REMOVAL AND REPLACEMENT IN EXCESS OF 4" (100) WILL BE PAID FOR IN ACCORDANCE WITH ARTICLE 109.04 OF THE STANDARD SPECIFICATIONS.
- PROPOSED #6 (20) EPOXY COATED TIE BARS 24" (600) LONG AT 24" (600) CENTERS WILL NOT BE PAID FOR SEPARATELY. DELETE EPOXY COATED TIE BARS IF EXISTING TIE BARS ARE USUABLE AS DETERMINED BY THE ENGINEER. (SEE NOTE ③).

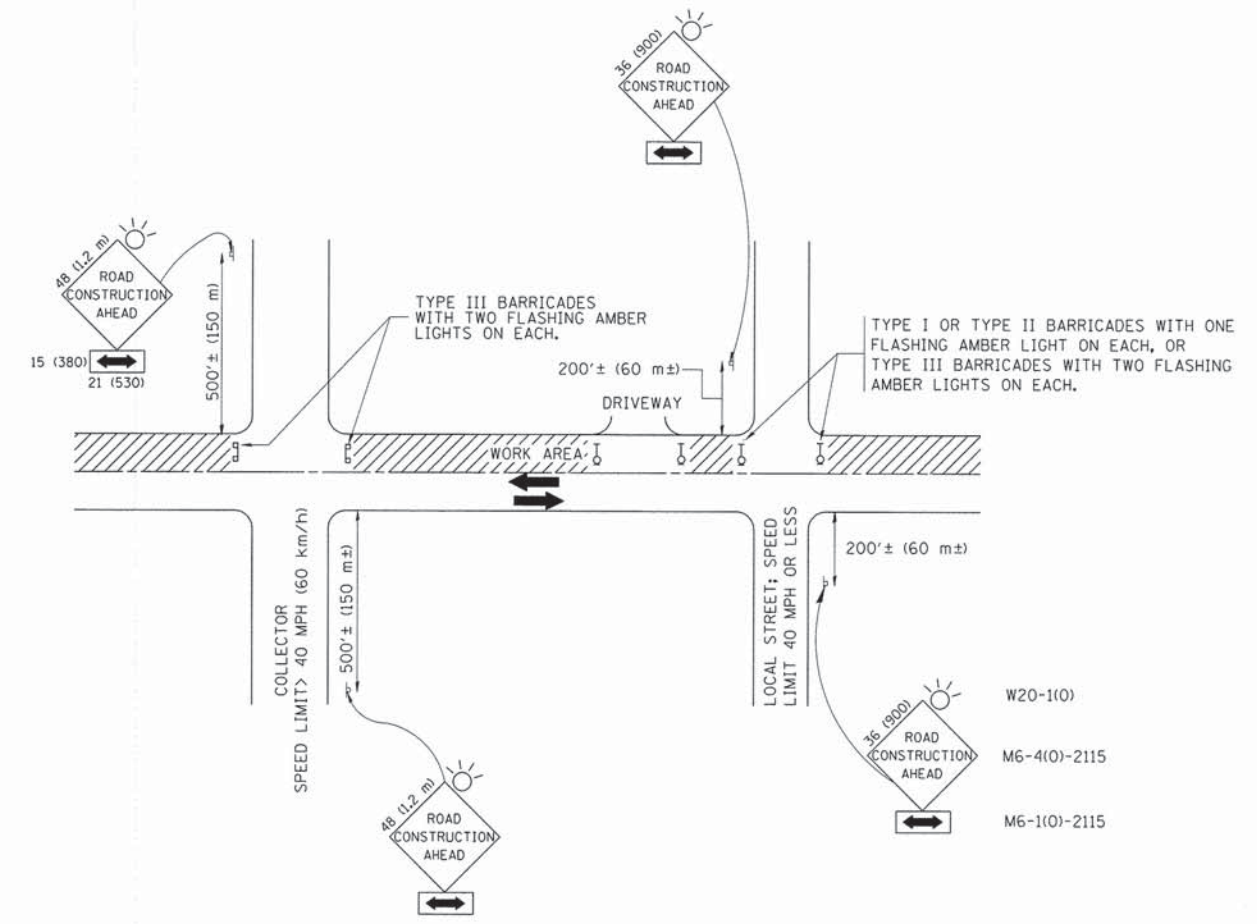
BASIS OF PAYMENT:
THIS WORK WILL BE PAID FOR AT THE CONTRACT UNIT PRICE PER FOOT (METER) FOR "CURB REMOVAL AND REPLACEMENT" OR "COMBINATION CONCRETE CURB AND GUTTER REMOVAL AND REPLACEMENT".

CURB OR CURB AND GUTTER REMOVAL AND REPLACEMENT

ALL DIMENSIONS ARE IN INCHES (MILLIMETERS) UNLESS OTHERWISE SHOWN.

FILE NAME =	USER NAME = .USER.	DESIGNED - A. HOUSEH	REVISED - R. SHAH 10-03-96	STATE OF ILLINOIS DEPARTMENT OF TRANSPORTATION	CURB OR CURB AND GUTTER REMOVAL AND REPLACEMENT			F.A.U. RTE.	SECTION	COUNTY	TOTAL SHEETS	SHEET NO.
N:\dgn\WF\WF587 SRTS Sidewalk\sheet5\587_17CurbandGutterRemovalandReplacement.dwg	587_17CurbandGutterRemovalandReplacement.dwg	DRAWN -	REVISED - A. ABBAS 03-21-97		SCALE: NONE	SHEET NO. 1 OF 1 SHEETS	STA.	TO STA.	12-00048-00-SW	DUPAGE	23	17
PLOT SCALE = 1/8" = 1'-0"		CHECKED -	REVISED - M. GOMEZ 01-22-01					BD600-06 (BD-24) CONTRACT NO. 61B01				
PLOT DATE = 12/12/2014		DATE - 03-11-94	REVISED - R. BORO 12-15-09		FED. ROAD DIST. NO. 1 [ILLINOIS] FED. AID PROJECT							

N:\dgn\WF\WF587 SRTS Sidewalk\sheet5\sheet5.dwg 12/12/2014 10:27:09 AM



TRAFFIC CONTROL AND PROTECTION FOR SIDE ROADS, INTERSECTIONS, AND DRIVEWAYS

NOTES:

- A. FOR NO LANE RESTRICTION ON THE SIDE ROAD OR DRIVEWAYS
- SIDE ROAD WITH A SPEED LIMIT OF 40 MPH (60 km/h) OR LESS AS SHOWN ON THE DRAWING AND AS DIRECTED BY THE ENGINEER:
 - ONE ROAD CONSTRUCTION AHEAD SIGN 36 x 36 (900x900) WITH A FLASHER AND FLAG MOUNTED ON IT APPROXIMATELY 200' (60 m) IN ADVANCE OF THE MAIN ROUTE.
 - THE CLOSED PORTION OF THE MAIN ROUTE SHALL BE PROTECTED BY BLOCKING WITH TYPE I, TYPE II OR TYPE III BARRICADES, 1/3 OF THE CROSS SECTION OF THE CLOSED PORTION.
 - SIDE ROAD WITH A SPEED LIMIT GREATER THAN 40 MPH (60 km/h) AS SHOWN ON THE DRAWING AND AS DIRECTED BY THE ENGINEER:
 - ONE ROAD CONSTRUCTION AHEAD SIGN 48 x 48 (1.2 m x 1.2 m) WITH A FLASHER MOUNTED ON IT APPROXIMATELY 500' (150 m) IN ADVANCE OF THE MAIN ROUTE.
 - THE CLOSED PORTION OF THE MAIN ROUTE SHALL BE PROTECTED BY BLOCKING WITH TYPE III BARRICADES, 1/2 OF THE CROSS SECTION OF THE CLOSED PORTION.
 - WHEN THE SIDE ROAD LIES BETWEEN THE BEGINNING OF THE MAINLINE SIGNING AND THE WORK ZONE, A SINGLE HEADED ARROW (M6-1) SHALL BE USED IN LIEU OF THE DOUBLE HEADED ARROW (M6-4).
- B. FOR A LANE CLOSURE ON A SIDE ROAD OR DRIVEWAY:
- USE APPLICABLE PORTIONS OF THE TYPICAL APPLICATION OF TRAFFIC CONTROL DEVICES (STD. 701501, STD. 701606 OR THE APPROPRIATE STANDARD). THE SPACING OF SIGNS AND BARRICADES SHALL BE ADJUSTED FOR FIELD CONDITIONS AS DIRECTED BY THE ENGINEER. THE DIRECTIONAL ARROW SHALL BE COVERED OR REMOVED WHEN NO LONGER CONSISTENT WITH THE SIDE ROAD LANE CLOSURE.
- C. ADVANCE WARNING SIGNS ARE TO BE OMITTED ON DRIVEWAY UNLESS OTHERWISE NOTED.
- D. THE TRAFFIC CONTROL AND PROTECTION FOR SIDE ROADS, INTERSECTIONS, AND DRIVEWAYS SHALL BE INCIDENTAL TO THE COST OF SPECIFIED TRAFFIC CONTROL STANDARDS OR ITEMS.

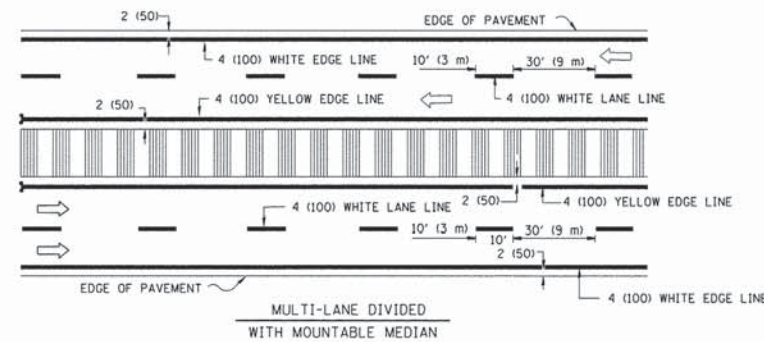
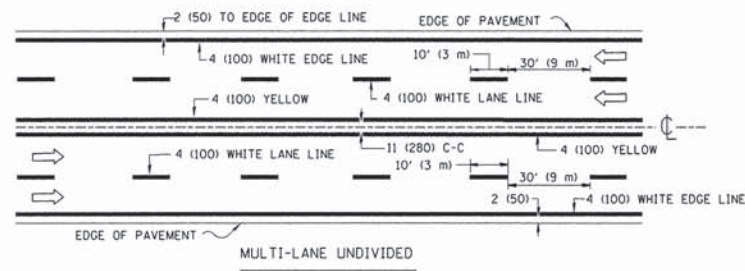
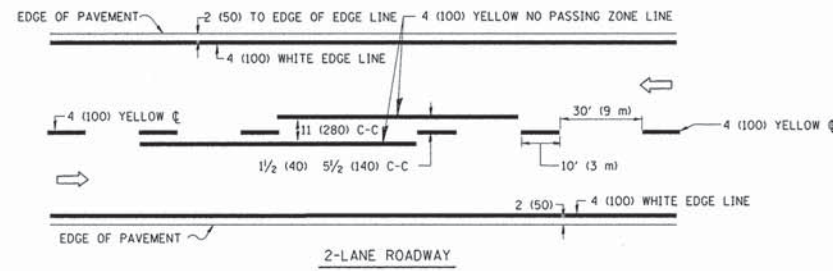
All dimensions are in millimeters (Inches) unless otherwise shown.

FILE NAME =	USER NAME = .USER.	DESIGNED - LHA	REVISED - J. OBERLE 10-18-95
N:\dgn\WF\WF587 SRTS Side\sk\sheet\WF587_1801stlTrafficControlDetail.dgn		DRAWN -	REVISED - A. HOUSEH 03-06-96
PLOT SCALE = 1/8" = 1' / in.		CHECKED -	REVISED - A. HOUSEH 10-15-96
PLOT DATE = 12/12/2014		DATE - 06-89	REVISED - T. RAMMACHER 01-06-00

STATE OF ILLINOIS
DEPARTMENT OF TRANSPORTATION

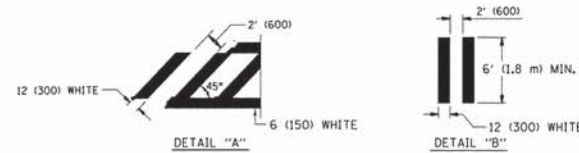
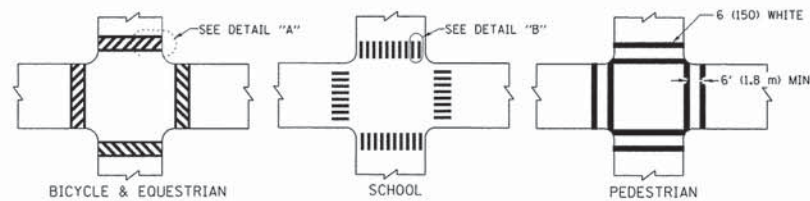
TRAFFIC CONTROL AND PROTECTION FOR SIDE ROADS, INTERSECTIONS, AND DRIVEWAYS			
SCALE: NONE	SHEET NO. 1 OF 1 SHEETS	STA.	TO STA.

F.A.U. RTE.	SECTION	COUNTY	TOTAL SHEETS	SHEET NO.
	12-00048-00-SW	DUPAGE	23	18
TC-10			CONTRACT NO. 61B01	
FED. ROAD DIST. NO. 1 ILLINOIS FED. AID PROJECT				

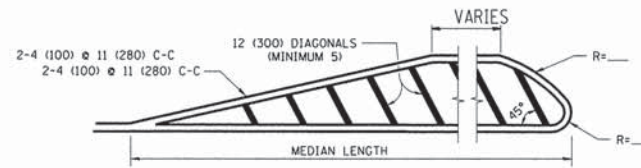
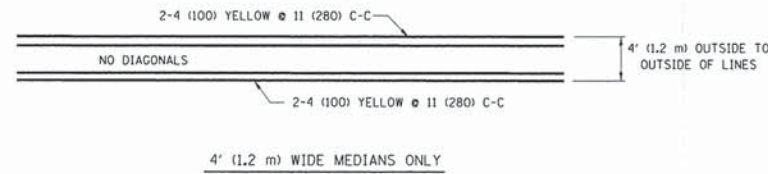


NOTE: MEDIANS WITH BARRIER CURB DO NOT REQUIRE AN EDGE LINE

TYPICAL LANE AND EDGE LINE MARKING

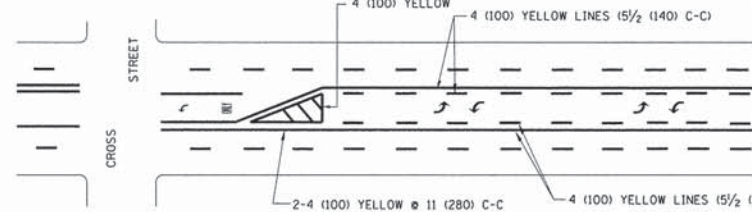


TYPICAL CROSSWALK MARKING

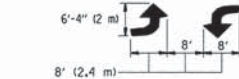


FOR MEDIAN LENGTHS WHERE DIAGONAL SPACING CANNOT BE ATTAINED, USE 5 (FIVE) EQUALLY SPACED DIAGONAL LINES.
 DIAGONAL LINE SPACING: 50' (15 m) C-C (LESS THAN 30MPH (50 km/h))
 75' (25 m) C-C 30MPH (50 km/h) TO 45MPH (70 km/h)
 150' (45 m) C-C (OVER 45MPH (70 km/h))

MEDIANS OVER 4' (1.2 m) WIDE

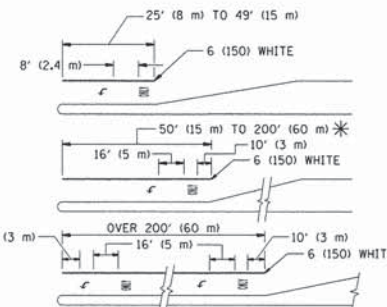


A MINIMUM OF TWO PAIRS OF TURN ARROWS SHALL BE USED, WHITE IN COLOR. ADDITIONAL PAIRS SHALL BE PLACED AT 200' (60 m) TO 300' (90 m) INTERVALS.



MEDIAN WITH TWO-WAY LEFT TURN LANE

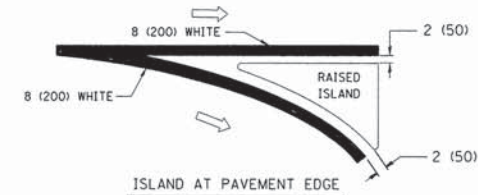
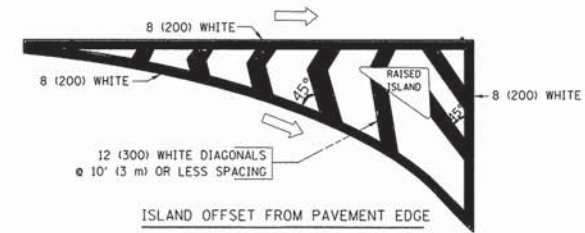
TYPICAL PAINTED MEDIAN MARKING



FULL SIZE LETTERS 8' (2.4 m) AND ARROWS SHALL BE USED.
 AREA = 15.6 SQ. FT. (1.5 m²) ONLY AREA = 20.8 SQ. FT. (1.9 m²)
 * TURN LANES IN EXCESS OF 400' (120 m) IN LENGTH MAY HAVE AN ADDITIONAL SET OF ARROW - "ONLY" INSTALLED MIDWAY BETWEEN THE OTHER TWO SETS OF ARROW - "ONLY".

TYPICAL LEFT (OR RIGHT) TURN LANE

TYPICAL TURN LANE MARKING



TYPICAL ISLAND MARKING

TYPE OF MARKING	WIDTH OF LINE	PATTERN	COLOR	SPACING / REMARKS
CENTERLINE ON 2 LANE PAVEMENT	4 (100)	SKIP-DASH	YELLOW	10' (3 m) LINE WITH 30' (9 m) SPACE
CENTERLINE ON MULTI-LANE UNDIVIDED PAVEMENT	2 @ 4 (100)	SOLID	YELLOW	11 (280) C-C
NO PASSING ZONE LINES: FOR ONE DIRECTION FOR BOTH DIRECTIONS	4 (100) 2 @ 4 (100)	SOLID SOLID	YELLOW YELLOW	5/2 (140) C-C FROM SKIP-DASH CENTERLINE 11 (280) C-C OMIT SKIP-DASH CENTERLINE BETWEEN
LANE LINES	4 (100) 5 (125) ON FREEWAYS	SKIP-DASH SKIP-DASH	WHITE WHITE	10' (3 m) LINE WITH 30' (9 m) SPACE
DOTTED LINES (EXTENSIONS OF CENTER, LANE OR TURN LANE MARKINGS)	SAME AS LINE BEING EXTENDED	SKIP-DASH	SAME AS LINE BEING EXTENDED	2' (600) LINE WITH 6' (1.8 m) SPACE
EDGE LINES	4 (100)	SOLID	YELLOW-LEFT WHITE-RIGHT	OUTLINE MOUNTABLE MEDIANS IN YELLOW; EDGE LINES ARE NOT USED NEXT TO BARRIER CURB
TURN LANE MARKINGS	6 (150) LINE; FULL SIZE LETTERS & SYMBOLS (8' (2.4m))	SOLID	WHITE	SEE TYPICAL TURN LANE MARKING DETAIL
TWO WAY LEFT TURN MARKING	2 @ 4 (100) EACH DIRECTION 8' (2.4m) LEFT ARROW	SKIP-DASH AND SOLID IN PAIRS	YELLOW WHITE	10' (3 m) LINE WITH 30' (9 m) SPACE FOR SKIP-DASH; 5/2 (140) C-C BETWEEN SOLID LINE AND SKIP-DASH LINE SEE TYPICAL TWO-WAY LEFT TURN MARKING DETAIL
CROSSWALK LINES (PEDESTRIAN) A. DIAGONALS (BIKE & EQUESTRIAN) B. LONGITUDINAL BARS (SCHOOL)	2 @ 6 (150) 12 (300) @ 45° 12 (300) @ 90°	SOLID SOLID SOLID	WHITE WHITE WHITE	NOT LESS THAN 6' (1.8 m) APART 2' (600) APART 2' (600) APART SEE TYPICAL CROSSWALK MARKING DETAILS.
STOP LINES	24 (600)	SOLID	WHITE	PLACE 4' (1.2 m) IN ADVANCE OF AND PARALLEL TO CROSSWALK, IF PRESENT. OTHERWISE, PLACE AT DESIRED STOPPING POINT, PARALLEL TO CROSSROAD CENTERLINE, WHERE POSSIBLE
PAINTED MEDIANS	2 @ 4 (100) WITH 12 (300) DIAGONALS @ 45° NO DIAGONALS USED FOR 4' (1.2 m) WIDE MEDIANS	SOLID	YELLOW TWO WAY TRAFFIC WHITE: ONE WAY TRAFFIC	11 (280) C-C FOR THE DOUBLE LINE SEE TYPICAL PAINTED MEDIAN MARKING.
GORE MARKING AND CHANNELIZING LINES	8 (200) WITH 12 (300) DIAGONALS @ 45°	SOLID	WHITE	DIAGONALS: 15' (4.5 m) C-C (LESS THAN 30MPH (50 km/h)) 20' (6 m) C-C 30MPH (50 km/h) TO 45MPH (70 km/h) 30' (9 m) C-C (OVER 45MPH (70 km/h))
RAILROAD CROSSING	24 (600) TRANSVERSE LINES: "RR" 15' (4.5 m) MIN. LINE FOR "X"	SOLID	WHITE	SEE STATE STANDARD 780001 AREA OF: "R"=3.6 SQ. FT. (0.33 m ²) EACH "X"=54.0 SQ. FT. (5.0 m ²)
SHOULDER DIAGONALS	12 (300) @ 45°	SOLID	WHITE - RIGHT YELLOW - LEFT	50' (15 m) C-C (LESS THAN 30MPH (50 km/h)) 75' (25 m) C-C (30 MPH (50 km/h) TO 45MPH (70 km/h)) 150' (45 m) C-C (OVER 45MPH (70 km/h))

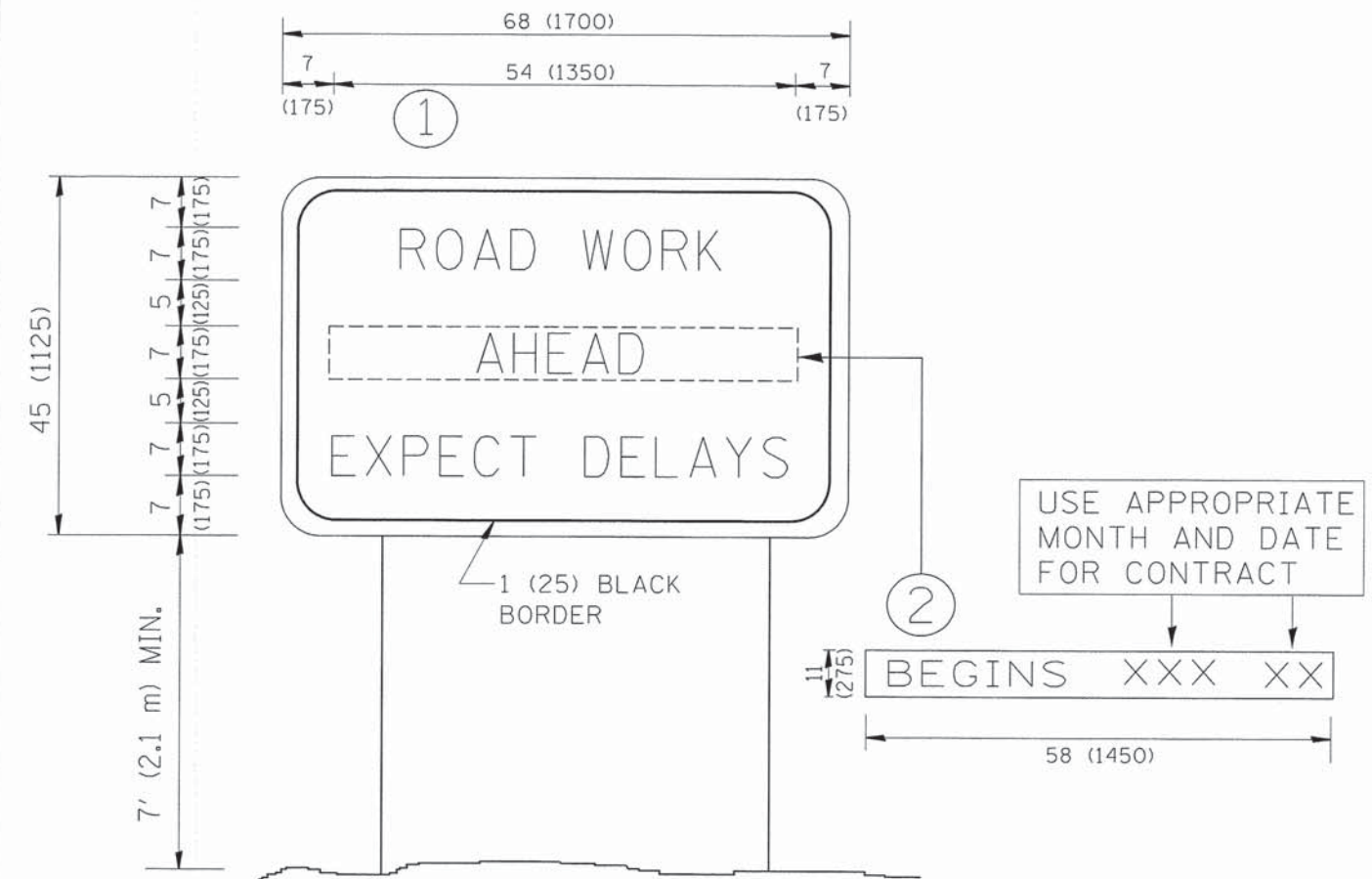
FOR FURTHER DETAILS ON PAVEMENT MARKING REFER TO STANDARD SPECIFICATIONS FOR ROAD AND BRIDGE CONSTRUCTION AND STATE STANDARD 780001.

All dimensions are in inches (millimeters) unless otherwise shown.

FILE NAME =	USER NAME = .USER.	DESIGNED - EVERS	REVISED - T. RAMMACHER 10-27-94
N:\dgn\WF\587 SRIS Sidewalk\sheet\587_1901stPavementMarkingDetail.dgn		DRAWN -	REVISED - C. JUCIUS 09-09-09
PLOT SCALE = 1/80 Ft / in.		CHECKED -	REVISED -
PLOT DATE = 12/12/2014		DATE - 03-19-90	REVISED -

STATE OF ILLINOIS
DEPARTMENT OF TRANSPORTATION

DISTRICT ONE		F.A.U. RTE.	SECTION	COUNTY	TOTAL SHEETS	SHEET NO.
TYPICAL PAVEMENT MARKINGS			12-00048-00-SW	DUPAGE	23	19
SCALE: NONE		TC-13		CONTRACT NO. 61B01		
SHEET NO. 1 OF 1 SHEETS		FED. ROAD DIST. NO. 1 (ILLINOIS) FED. AID PROJECT		STA. TO STA.		



NOTES:

1. USE BLACK LETTERING ON ORANGE BACKGROUND.
2. ERECT SIGNS IN ADVANCE OF THE LOCATION FOR THE "ROAD CONSTRUCTION AHEAD" SIGN AT LOCATIONS AS DIRECTED BY THE ENGINEER.
3. ERECT SIGN ① WITH INSTALLED PANEL ② ONE WEEK PRIOR TO THE START OF CONSTRUCTION.
4. REMOVE PANEL ② SOON AFTER THE START OF CONSTRUCTION.
5. SEE SPECIAL PROVISION FOR "TEMPORARY INFORMATION SIGNING" FOR ADDITIONAL INFORMATION.
6. ONE SIGN ASSEMBLY EQUALS 25.70 SQ. FT. (2.3 SQ. M.)
7. SHALL BE PAID FOR AS TEMPORARY INFORMATION SIGNING.

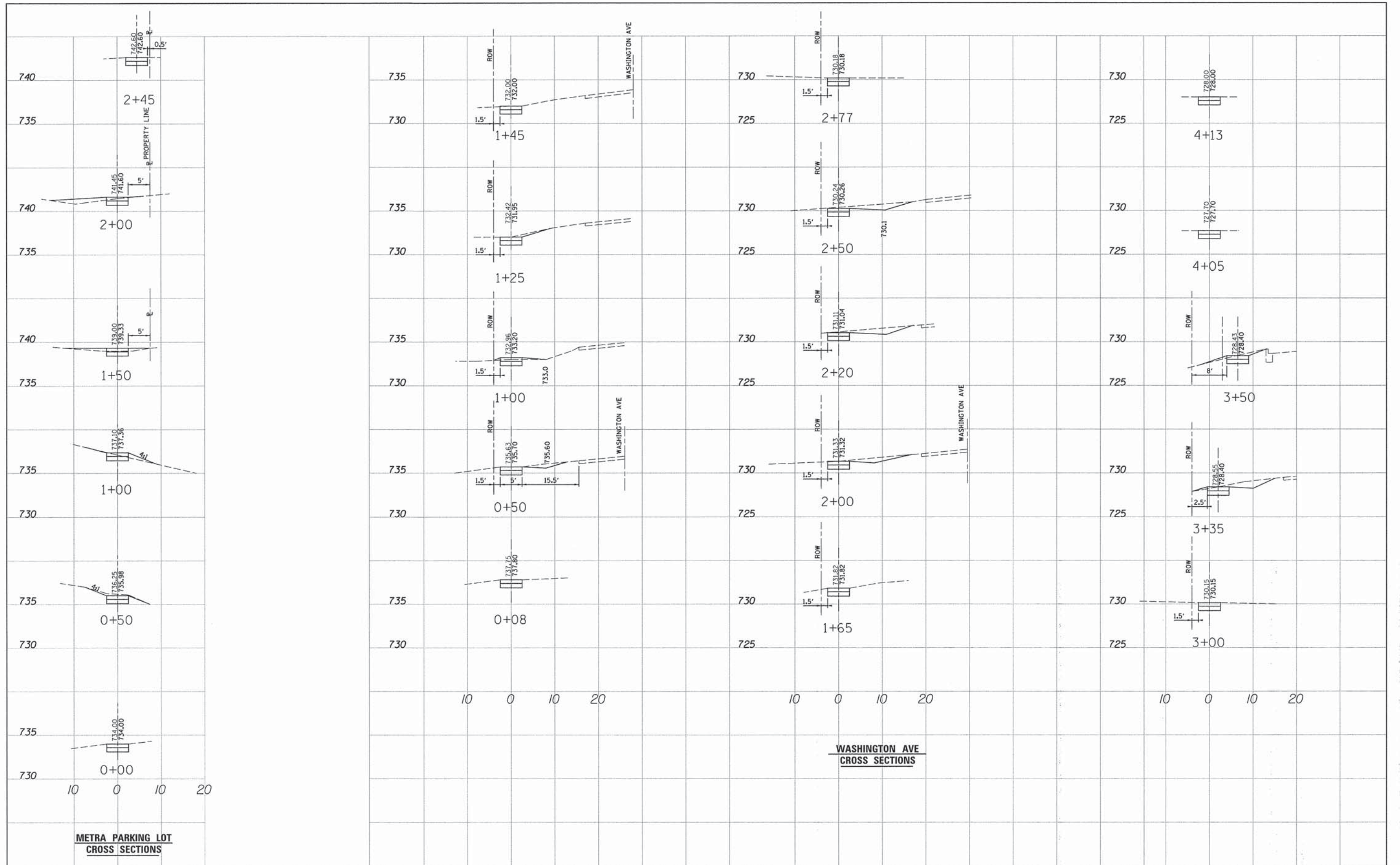
ALL DIMENSIONS ARE IN INCHES (MILLIMETERS) UNLESS OTHERWISE SHOWN.

FILE NAME =	USER NAME = .USER.	DESIGNED -	REVISED - R. MIRS 09-15-97
N:\dgn\WF\WF587 SRTS Sidewalk\sheet\WF587_28ArterialRoadInformationSign.dgn		DRAWN -	REVISED - R. MIRS 12-11-97
PLOT SCALE = 1.00 ft / in.		CHECKED -	REVISED - T. RAMMACHER 02-02-99
PLOT DATE = 12/12/2014		DATE -	REVISED - C. JUCIUS 01-31-07

**STATE OF ILLINOIS
DEPARTMENT OF TRANSPORTATION**

ARTERIAL ROAD INFORMATION SIGN	
SCALE: NONE	SHEET NO. 1 OF 1 SHEETS STA. TO STA.

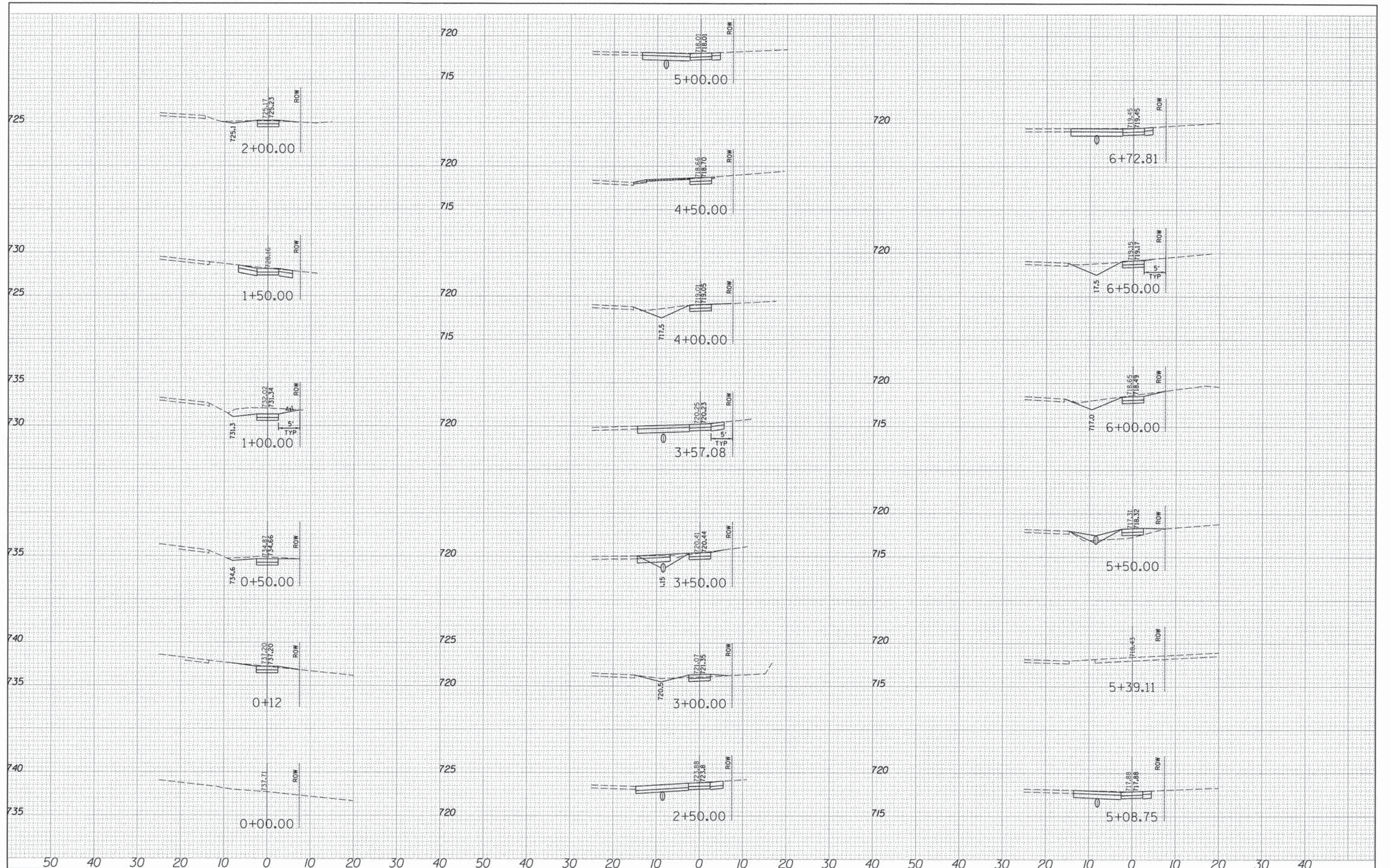
F.A.U. RTE.	SECTION	COUNTY	TOTAL SHEETS	SHEET NO.
	12-00048-00-SW	DUPAGE	23	20
TC-22			CONTRACT NO. 61B01	
FED. ROAD DIST. NO. 1 ILLINOIS FED. AID PROJECT				



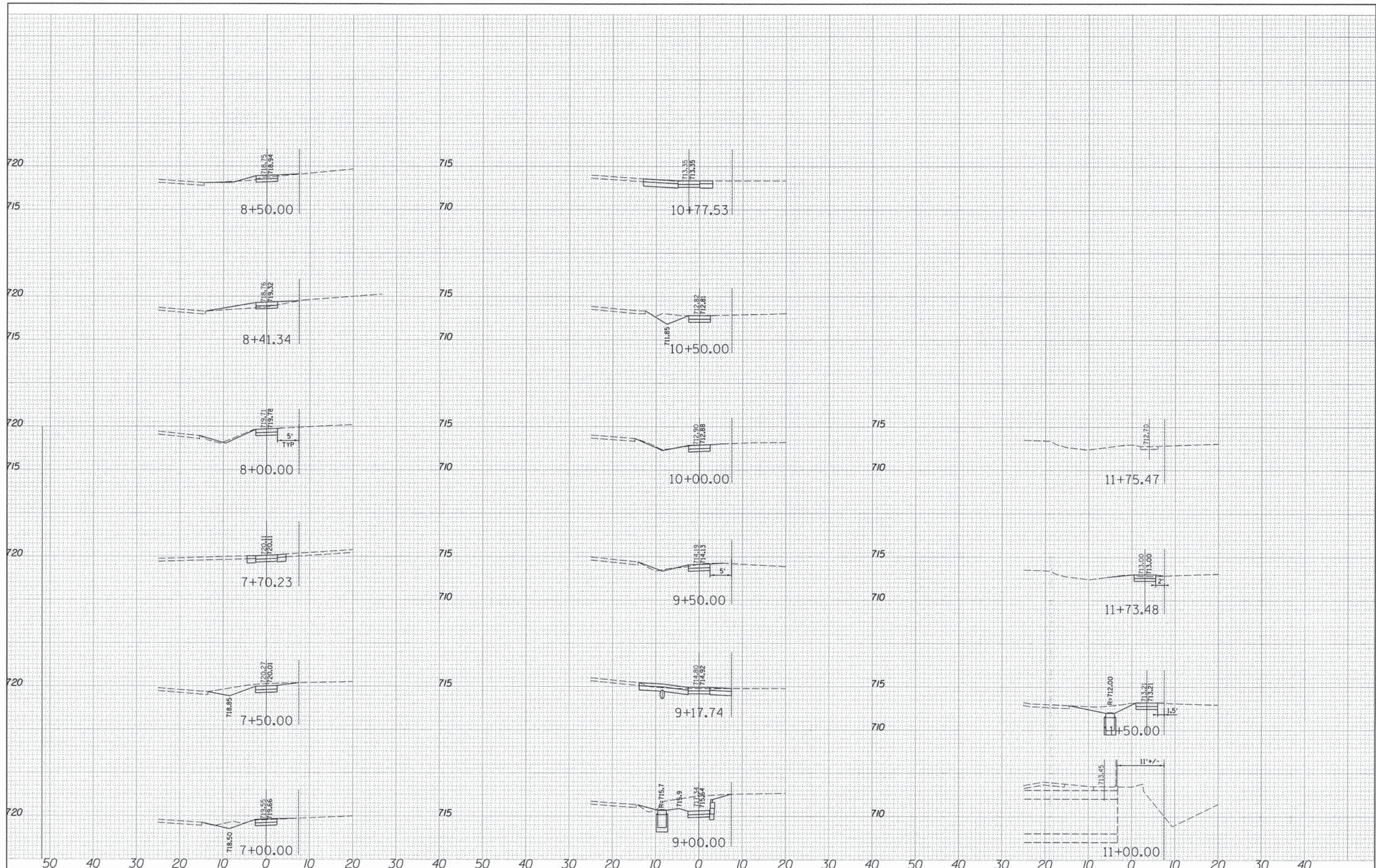
**METRA PARKING LOT
CROSS SECTIONS**

**WASHINGTON AVE
CROSS SECTIONS**

FILE NAME = N:\dgn\WF\WF587 SRTS Sidewalk\sheet\587_21\Meta.WashingtonCrossSections.dgn	USER NAME = .USER.	DESIGNED -	REVISED -	STATE OF ILLINOIS DEPARTMENT OF TRANSPORTATION	METRA PARKING LOT AND WASHINGTON AVE CROSS SECTIONS			F.A.U. RTE.	SECTION	COUNTY	TOTAL SHEETS	SHEET NO.
	PLOT SCALE = 10.00 ft / in.	CHECKED -	REVISED -		SCALE: H: 1"=10' V: 1"=5'	SHEET NO. 21 OF 23 SHEETS	STA. TO STA.	12-00048-00-SW	DuPAGE	23	21	
	PLOT DATE = 12/12/2014	DRAWN -	REVISED -					CONTRACT NO. 61B01				
		DATE = APR 2013	REVISED -					[ILLINOIS] FED. AID PROJECT				



FILE NAME = N:\dgn\WF\587 SRTS Sidewalk\sheet\587.22 23ParkStreetCrossSections.dgn	USER NAME = .USER.	DESIGNED -	REVISÉD -	STATE OF ILLINOIS DEPARTMENT OF TRANSPORTATION	PARK STREET CROSS SECTIONS		F.A.U. RTE.	SECTION	COUNTY	TOTAL SHEETS	SHEET NO.	
		CHECKED -	REVISÉD -		SCALE:	SHEET NO. 22 OF 23 SHEETS	STA.	12-00048-00-SW	DuPAGE	23	22	
		DRAWN -	REVISÉD -				TO STA.					
		DATE -	REVISÉD -									CONTRACT NO. 61B01
ILLINOIS FED. AID PROJECT												



FILE NAME =	USER NAME = .USER.	DESIGNED -	REVISED -
N:\dgn\WF\587 SRTS Sidewalk\sheets\W	587.22 23ParkStreetCrossSections.dgn	CHECKED -	REVISED -
	PLOT SCALE = 10.00 ft / in.	DRAWN -	REVISED -
	PLOT DATE = 12/12/2014	DATE -	REVISED -

**STATE OF ILLINOIS
DEPARTMENT OF TRANSPORTATION**

**PARK STREET
CROSS SECTIONS**

SCALE: SHEET NO. 23 OF 23 SHEETS STA. TO STA.

F.A.U. RTE.	SECTION	COUNTY	TOTAL SHEETS	SHEET NO.
	12-00048-00-SW	DUPAGE	23	23
CONTRACT NO. 61B01				
ILLINOIS FED. AID PROJECT				