

03-06-2015 LETTING ITEM 034

STATE OF ILLINOIS
DEPARTMENT OF TRANSPORTATION
DIVISION OF HIGHWAYS

**PROPOSED
HIGHWAY PLANS**

FAI ROUTE 39 (I-39)
SECTION D2 BRIDGE REPAIR 2015-1

TYPE of IMPROVEMENT
WINNEBAGO COUNTY

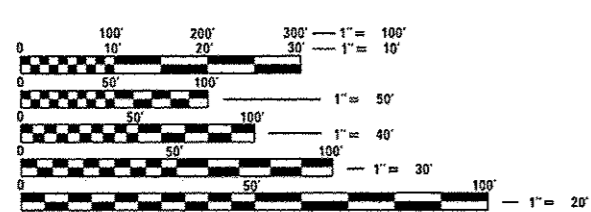
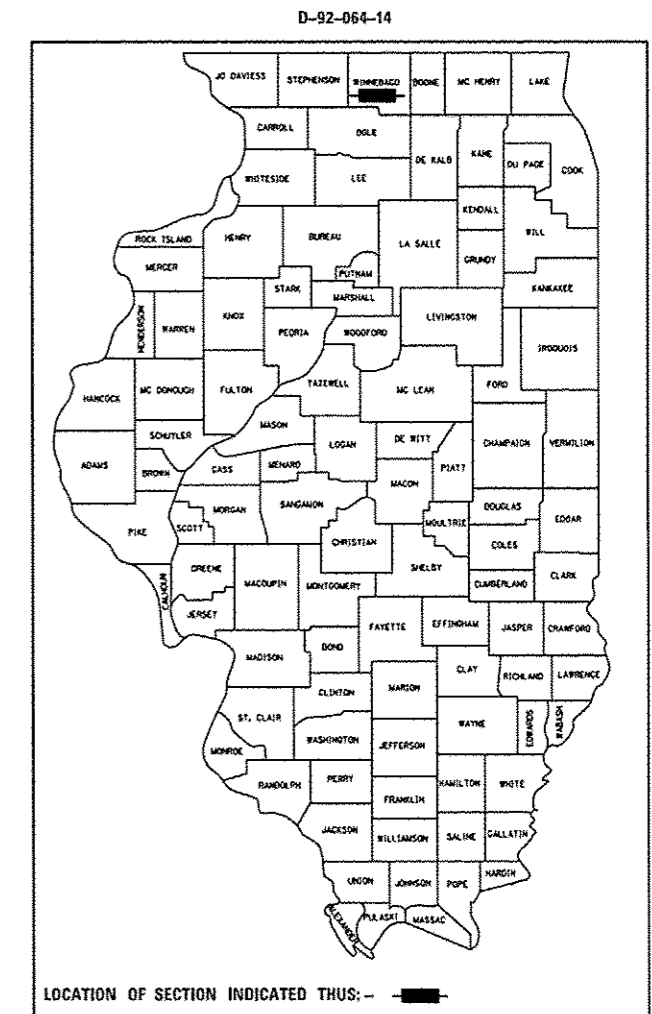
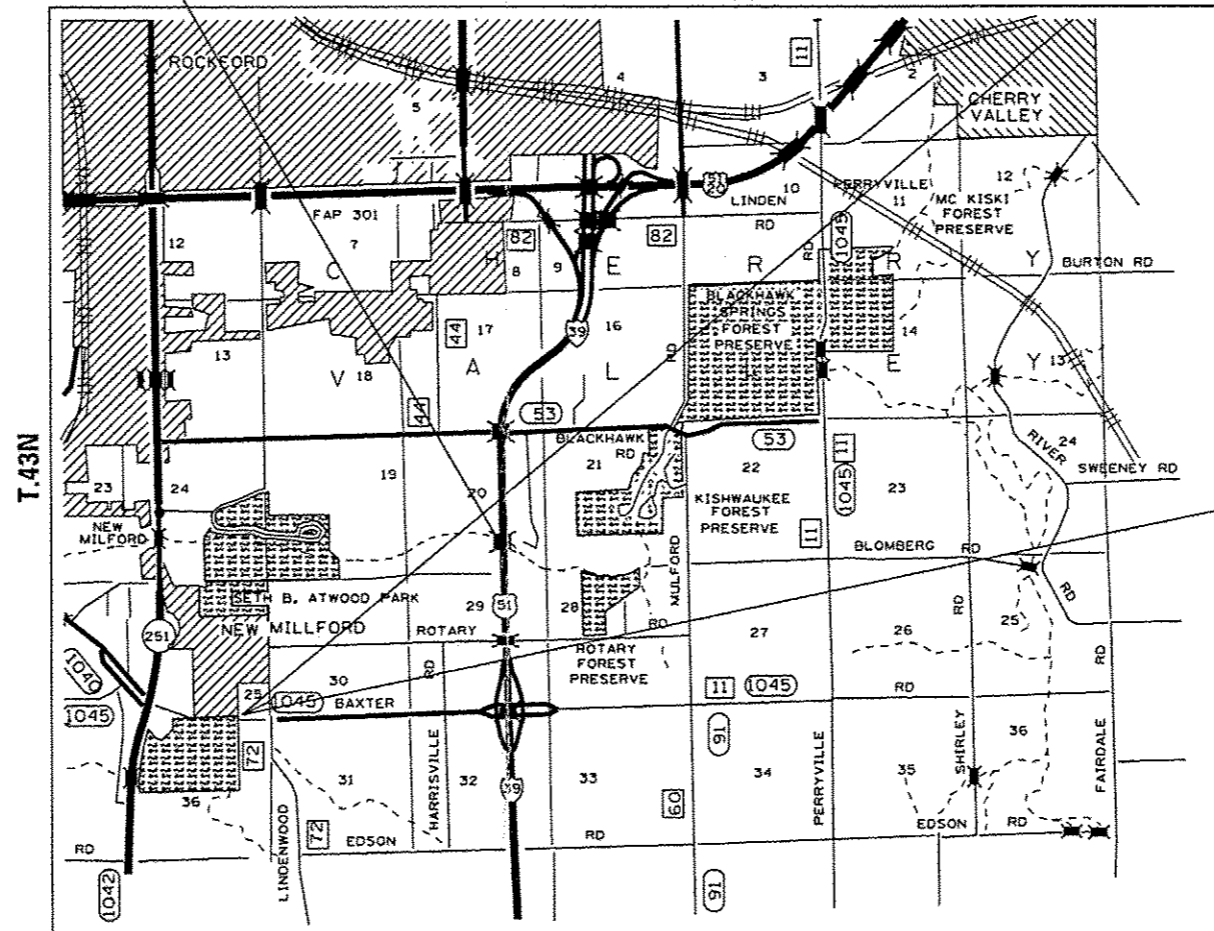
C-92-086-14 R.2E

F.A.I. RTE.	SECTION	COUNTY	TOTAL SHEETS	SHEET NO.
39	D2 BRIDGE REPAIR 2015-1	WINNEBAGO	5	1
		ILLINOIS CONTRACT NO.	64K44	

FOR INDEX OF SHEETS, SEE SHEET NO. 2
FOR STATE STANDARDS, SEE SHEET NO. 2

SN 101-0133
SN 101-0134

ROCKFORD TOWNSHIP - SECTION 20



FULL SIZE PLANS HAVE BEEN PREPARED USING STANDARD ENGINEERING SCALES. REDUCED SIZED PLANS WILL NOT CONFORM TO STANDARD SCALES. IN MAKING MEASUREMENTS ON REDUCED PLANS, THE ABOVE SCALES MAY BE USED.

J.U.L.I.E.
JOINT UTILITY LOCATION INFORMATION FOR EXCAVATION
1-800-892-0123
OR 811

PROJECT ENGINEER: DAVID DOSS (815) 284-5416
PROJECT MANAGER: MAHMOUD ETEMADI (815) 284-5393

CONTRACT NO. 64K44

STATE OF ILLINOIS
DEPARTMENT OF TRANSPORTATION
DIVISION OF HIGHWAYS

SUBMITTED Dec 5 20 14
Paul A. Zeta
DEPUTY DIRECTOR OF HIGHWAYS, REGION ENGINEER

Jan 30 20 15
John D. Baranzelli, P.E.
ENGINEER OF DESIGN AND ENVIRONMENT

Jan 30 20 15
Ones Osman, P.E.
DIRECTOR OF HIGHWAYS, CHIEF ENGINEER

PRINTED BY THE AUTHORITY
OF THE STATE OF ILLINOIS

INDEX OF SHEETS

- 1 COVER SHEET
- 2 INDEX OF SHEETS, STATE STANDARDS & GENERAL NOTES
- 3 SUMMARY OF QUANTITIES
- 4 REPAIR DETAILS
- 5 TROUGH REPLACEMENT DETAILS

GENERAL NOTES

All Borrow/Waste/Use sites must be approved by the Department prior to removing any material from the project or initiating any earthmoving activities, including temporary stockpiling outside the limits of construction.

The Contractor shall be responsible for protecting utility property during construction operations as outlined in Article 107.31 of the Standard Specifications. A minimum of 48 hours advance notice is required for non-emergency work. The JULIE number is 800-892-0123. The following listed utilities located within the project limits or immediately adjacent to the project construction limits are members of JULIE:

ELECTRIC:

COMMONWEALTH EDISON COMPANY
 ATTN: NORA FERNANDEZ (815) 490-2869
 123 ENERGY AVENUE
 ROCKFORD, IL 61109

TELEPHONE:

FRONTIER
 ATTN: DONALD BELMORE (815) 544-6171
 2239 NEWBURG ROAD
 BELVIDERE, IL 61008

GAS:

NICOR GAS CO.
 ATTN: BRUCE KOPPANG (630) 388-3046
 1844 FERRY ROAD
 NAPERVILLE, IL 60563

CATV:

COMCAST CABLE
 ATTN: MICHAEL OWENS (815) 395-8977
 4450 KISHWAUKEE STREET
 ROCKFORD, IL 61109

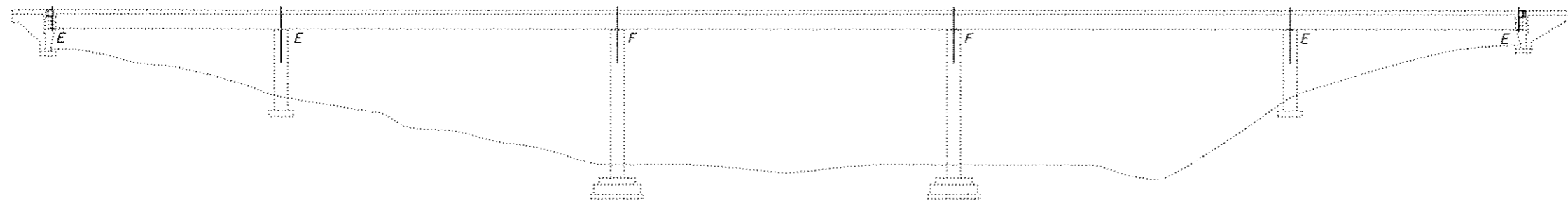
STATE STANDARDS

- 000001 - 06 STANDARD SYMBOLS, ABBREVIATIONS, AND PATTERNS
- 001006 DECIMAL EQUIVALENTS OF AN INCH AND FOOT
- 701101 - 04 OFF ROAD OPERATIONS, MULTILANE, 15' (4.5 m) TO 24" (600 mm) FROM PAVEMENT EDGE
- 701106 - 02 OFF ROAD OPERATIONS, MULTILANE, MORE THAN 15' (4.5 m) AWAY
- 701901 - 04 TRAFFIC CONTROL DEVICES
- 720011 - 01 METAL POSTS FOR SIGNS, MARKERS & DELINEATORS
- 728001 - 01 TELESCOPING STEEL SIGN SUPPORT
- 729001 - 01 APPLICATIONS OF TYPES A & B METAL POSTS (FOR SIGNS & MARKERS)

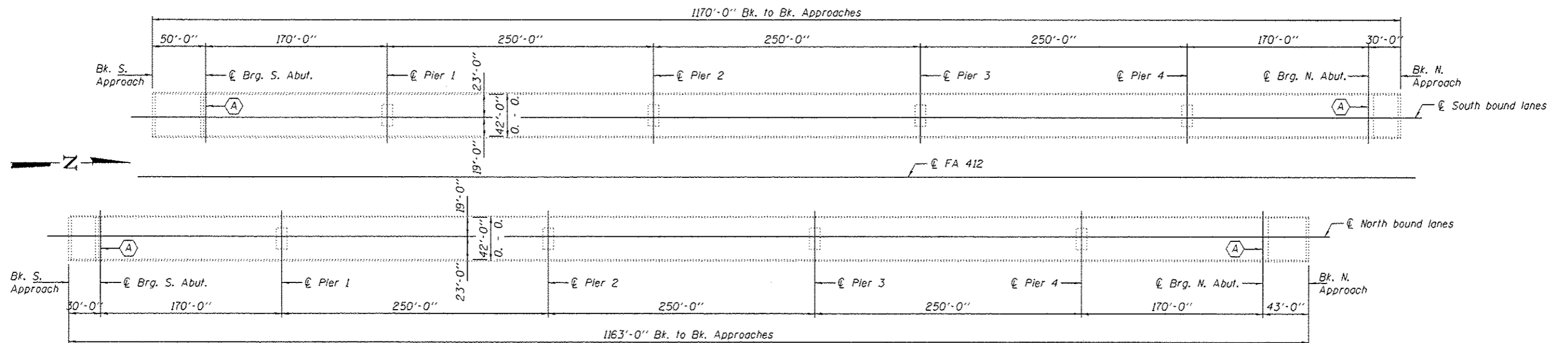
IDOT is not a member of JULIE. If you are near any overhead lighting, intersection lighting or traffic signals, contact the IDOT Traffic Office at 815/284-5469 at least 48 hours prior to work.

No Stream Permits have been procured for this project. None are required from the Regulatory Agencies as long as there is no debris falling or being placed into the stream. Any temporary fill in the stream or the compromising of the dike (if applicable) will not be allowed. If the contractor chooses to use alternate/modified construction method(s) from the aforementioned, they will be responsible for obtaining the proper permits. No relief or compensation will be given for any delays, working days charged, or calendar days expired as a result of the loss of time or delay during the re-submittal process to procure the necessary permit(s) due to the contractor choosing alternate/modified construction method(s). Absolutely no construction activities will take place without the proper permits being secured.

FILE NAME : D:\BR\Draw\Winnebago\64K44 Repairs SH	USER NAME : dssdd	DESIGNED - _____	REVISED - _____	STATE OF ILLINOIS DEPARTMENT OF TRANSPORTATION	INDEX OF SHEETS		F.A.I. R/L	SECTION	COUNTY	TOTAL SHEETS	SHEET NO.
	01-0133 & 0134\CADD\02-sht-cover.dgn	DRAWN - _____	REVISED - _____		STATE STANDARDS & GENERAL NOTES		39	D2 BRIDGE REPAIR 2015-1	WINNEBAGO	5	2
Default	PLOT SCALE = 100.0000' / 1" =	CHECKED - _____	REVISED - _____		SCALE: _____	SHEET _____	OF _____ SHEETS	STA. _____	TO STA. _____	ILLINOIS FED. AID PROJECT CONTRACT NO. 64K44	
	PLOT DATE = Thu Dec 04 13:56:21 2014	DATE - _____	REVISED - _____								



ELEVATION



PLAN

(A) - Existing 1/8" Reinforced Elastomeric Trough at each abutment to be removed and replaced.

GENERAL NOTES

All structural steel shall conform to AASHTO Classification M-270 Gr. 36, unless otherwise noted.

Fasteners shall be high strength bolts. Bolts 7/8"φ, open holes 15/16"φ, unless otherwise noted.

Plan dimensions and details relative to existing plans are subject to nominal construction variations. The Contractor shall field verify existing dimensions and details affecting new construction and make necessary approved adjustments prior to construction or ordering of materials. Such variations shall not be cause for additional compensation for a change in scope of the work, however, the Contractor will be paid for the quantity actually furnished at the unit price bid for the work.

Cost of removal and re-installation of all members necessary to complete the work as detailed on the plans and as specified in the Special Provisions shall be included with Fabric Reinforced Elastomeric Trough.

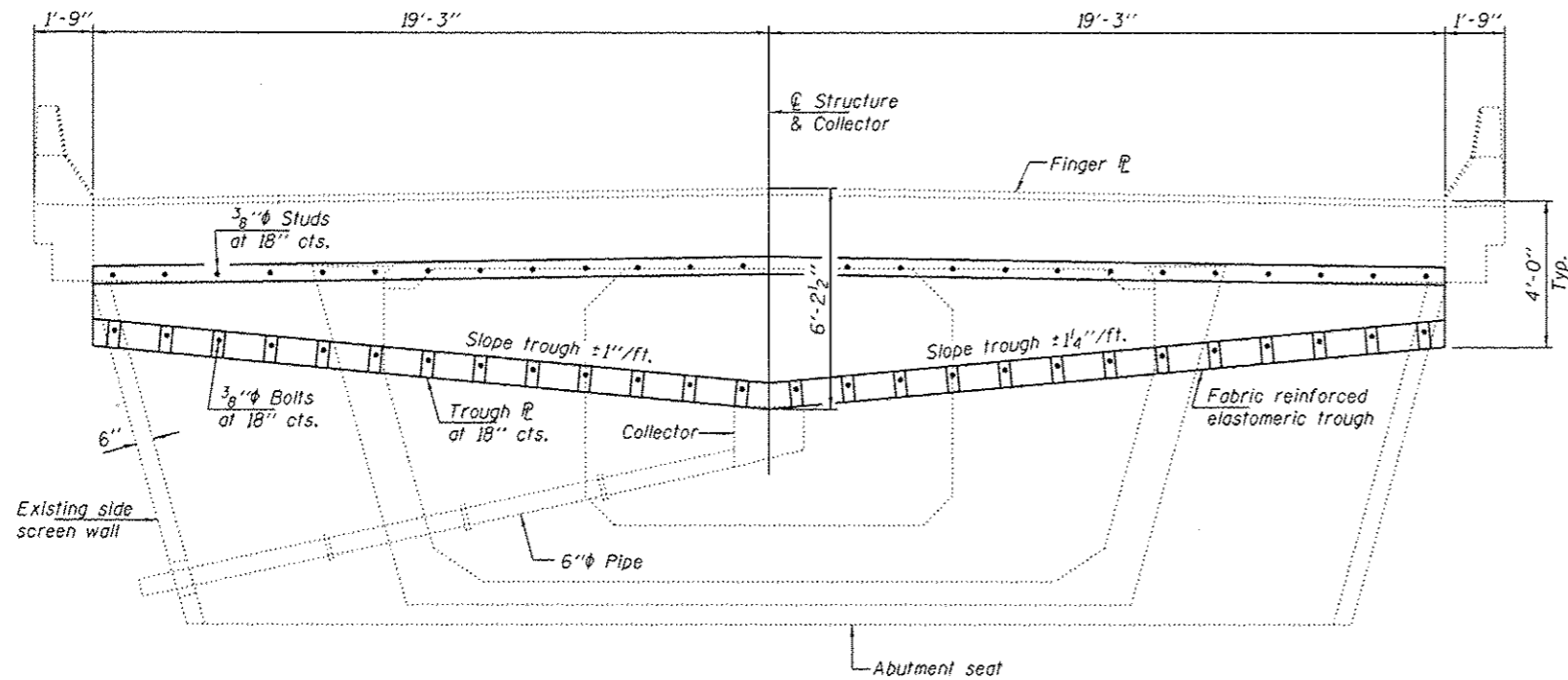
Existing structural steel that will be in contact with new structural steel shall be cleaned and painted prior to erection as required by the Special Provision "Cleaning and Painting Contact Surface Areas of Existing Steel Structures".

All structural steel shall be shop painted with the inorganic zinc rich primer per AASHTO M300, Type 1. Cost included with Structural Steel Repair.

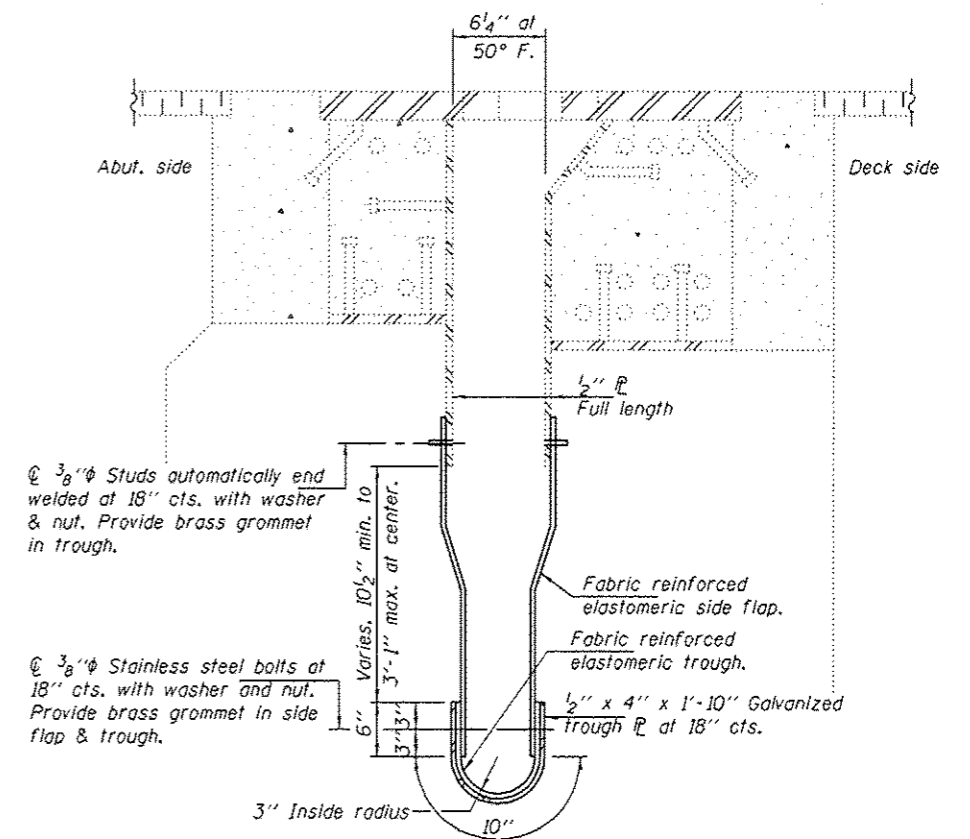
TOTAL BILL OF MATERIAL

ITEM	UNIT	QUANTITY
Fabric Reinforced Elastomeric Trough	Foot	154

DESIGNED: <i>[Signature]</i>	EXAMINED: <i>[Signature]</i>	DATE: JANUARY 15, 2015	STATE OF ILLINOIS DEPARTMENT OF TRANSPORTATION	REPAIR DETAILS FAI 39 OVER THE KISHWAUKEE RIVER SN 101-0133 & 0134	F.A.I. RTE. 39	SECTION D2 DECK REPAIR 2015-1	COUNTY WINNEBAGO	TOTAL SHEETS 5	SHEET NO. 4
CHECKED: <i>[Signature]</i>	PASSED: <i>[Signature]</i>	REVISED:			CONTRACT NO. 64K44				
DRAWN: <i>[Signature]</i>	ACTING ENGINEER OF BRIDGES AND STRUCTURES	REVISED:			SHEET NO. 1 OF 2 SHEETS				
CHECKED: <i>[Signature]</i>					ILLINOIS FED. AID PROJECT				



TYPICAL PROPOSED SECTION AT ABUTMENTS



SECTION THRU JOINT

DESIGNED: DAB	EXAMINED: <i>Timothy A. Ancelet</i>	DATE: JANUARY 15, 2015
CHECKED: VHV	ACTING ENGINEER OF STRUCTURAL SERVICES	REVISED:
DRAWN: baliva	<i>Carl Perry</i>	REVISED:
CHECKED: DAB VHV	ACTING ENGINEER OF BRIDGES AND STRUCTURES	

STATE OF ILLINOIS
DEPARTMENT OF TRANSPORTATION

TROUGH REPLACEMENT DETAILS
SN 101-0133 & 0134

SHEET NO. 2 OF 2 SHEETS

F.A.I. RTE.	SECTION	COUNTY	TOTAL SHEETS	SHEET NO.
39	D2 DECK REPAIR 2015-1	WINNEBAGO	5	5
CONTRACT NO. 64K44			ILLINOIS FED. AID PROJECT	