

STATE OF ILLINOIS
DEPARTMENT OF TRANSPORTATION
DIVISION OF HIGHWAYS

**PROPOSED
HIGHWAY PLANS**

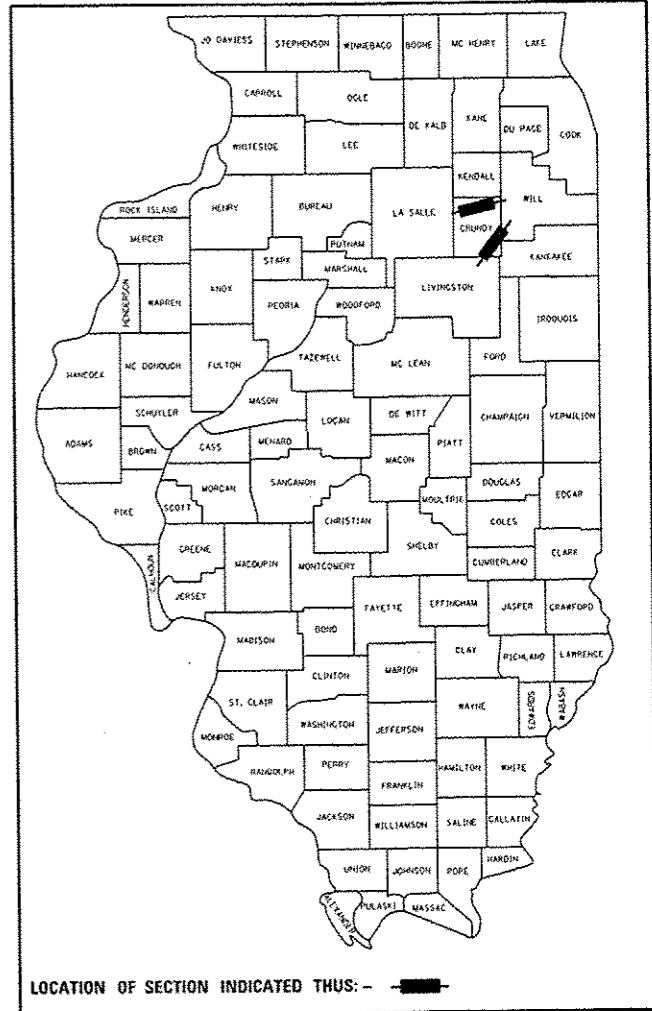
**FAI 80 & FAI 55 (I-80 & I-55)
SECTION: 2015-1 WEED SPRAY**

GRUNDY COUNTY

C-93-011-15

F.A.I. RTE.	SECTION	COUNTY	TOTAL SHEETS	SHEET NO.
80/55	2015-1 WEED SPRAY	GRUNDY	8	1
		ILLINOIS	CONTRACT NO. 66E30	

D-93-011-15



**FUNCTIONAL CLASSIFICATION:
INTERSTATE**

2013 I-80 ADT=35,500 SU=10.8% MU=28.7%
2013 I-55 ADT=20,300 SU=14.5% MU=24.1%

STATE OF ILLINOIS
DEPARTMENT OF TRANSPORTATION
DIVISION OF HIGHWAYS

SUBMITTED October 23 2014

Paul Lorte, P.E.
DEPUTY DIRECTOR OF HIGHWAYS, REGION ENGINEER

John D. Baranzelli, P.E.
ENGINEER OF DESIGN AND ENVIRONMENT

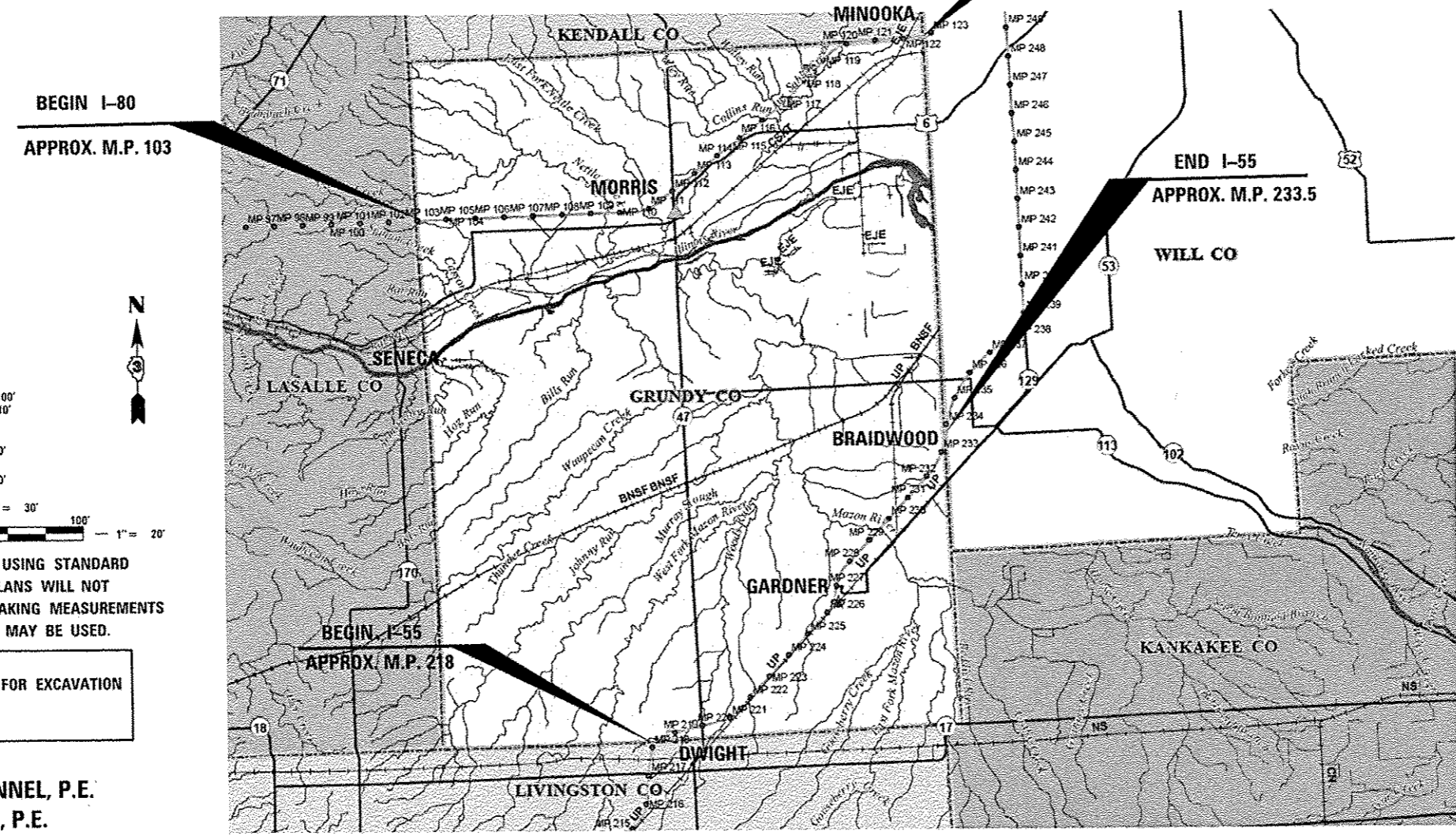
Oran Osman, P.E.
DIRECTOR OF HIGHWAYS, CHIEF ENGINEER

**PRINTED BY THE AUTHORITY
OF THE STATE OF ILLINOIS**

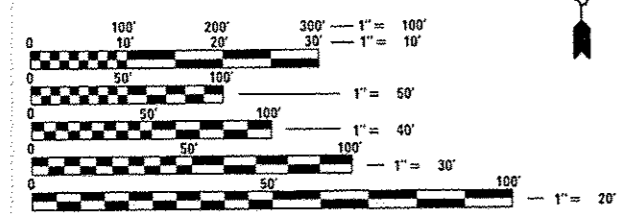
- INDEX OF SHEETS**
- 1 COVER SHEET
 - 2 GENERAL NOTES
 - 3 SUMMARY OF QUANTITIES
 - 4 SCHEDULE
 - 5-6 DETAILED LOCATION MAPS
 - 7-8 GPS TEASEL INFESTATION AREAS

LIST OF ILLINOIS DOT HIGHWAY STANDARDS

- 701101-04 OFF-ROAD OPERATIONS MULTILANE, 15' (4.5 m) TO 24' (600 mm) FROM PAVEMENT EDGE
- 701106-02 OFF-ROAD OPERATIONS, MULTILANE, MORE THAN 15' (4.5 m) AWAY
- 701426-07 LANE CLOSURE, MULTILANE INTERMITTENT OR MOVING OPERATION, FOR SPEEDS ≥ 45 MPH
- 701901-04 TRAFFIC CONTROL DEVICES



LOCATION MAP - NOT TO SCALE



FULL SIZE PLANS HAVE BEEN PREPARED USING STANDARD ENGINEERING SCALES. REDUCED SIZED PLANS WILL NOT CONFORM TO STANDARD SCALES. IN MAKING MEASUREMENTS ON REDUCED PLANS, THE ABOVE SCALES MAY BE USED.

J.U.L.I.E.
JOINT UTILITY LOCATION INFORMATION FOR EXCAVATION
1-800-892-0123
OR 811

DISTRICT 3 (815) 434-6131
PROJECT ENGINEER: JOE KANNEL, P.E.
UNIT CHIEF: DUANE LUKKARI, P.E.
TOWNSHIPS: VARIOUS
CONTRACT NO. 66E30

GENERAL NOTES

ANY REFERENCE TO A STANDARD IN THESE PLANS SHALL BE INTERPRETED TO MEAN THE EDITION AS INDICATED BY THE SUBNUMBER SHOWN IN THE LIST OF STANDARDS OR THE COPY INCLUDED IN THESE PLANS.

THE FOLLOWING RATES OF APPLICATION HAVE BEEN USED IN CALCULATING PLAN QUANTITIES:

MILESTONE	7	OUNCES / ACRE
IMPROVED SURFACTANT	2	PINT / 100 GALLONS OF WATER
WATER	25	GALLONS / ACRE
ESCORT XP	0.5	GRANULAR OUNCES / ACRE

COMMITMENTS: NONE

STATE OF ILLINOIS
DEPARTMENT OF TRANSPORTATION
DISTRICT THREE

PREPARED BY: *Tom Brown*
DISTRICT STUDIES & PLANS ENGINEER

DATE: October 23, 2014

EXAMINED BY: *Herb Gray*
DISTRICT CONSTRUCTION ENGINEER

Wynn Phillips
DISTRICT MATERIALS ENGINEER

Bruce A. Husker
DISTRICT OPERATIONS ENGINEER

FILE NAME *	USER NAME * lukkrtdp	DESIGNED -	REVISED -	STATE OF ILLINOIS DEPARTMENT OF TRANSPORTATION	GENERAL NOTES	F.A.I. RTE.	SECTION	COUNTY	TOTAL SHEETS	SHEET NO.	
c:\p\epk\p\p\p\lukkrtdp\d0410538\031	2A18-shr-cover.dgn	DRAWN -	REVISED -			80/55	2015-1 WEED SPRAY	GRUNDY	8	2	
	PLOT SCALE * 100,0000 / in.	CHECKED -	REVISED -			SCALE: SHEET OF SHEETS STA. TO STA.					
	PLOT DATE * 10/24/2014	DATE -	REVISED -			ILLINOIS HIGH FED. AID PROJECT CONTRACT NO. 66E30					

SUMMARY OF QUANTITIES				CONSTRUCTION TYPE CODE	
				100% STATE ROADWAY	100% STATE ROADWAY
CODE NO.	ITEM	UNIT	TOTAL QUANTITY	0031 RURAL	0031 URBAN
67100100	MOBILIZATION	L SUM	1	0.5	0.5
K0029629	WEED CONTROL, BROADLEAF IN TURF	POUND	18.8	7.4	11.4
K0029618	WEED CONTROL, BROADLEAF IN TURF	GALLON	32.9	12.9	20.0

3

WEED SPRAYING ON I-80 & I-55 IN GRUNDY COUNTY

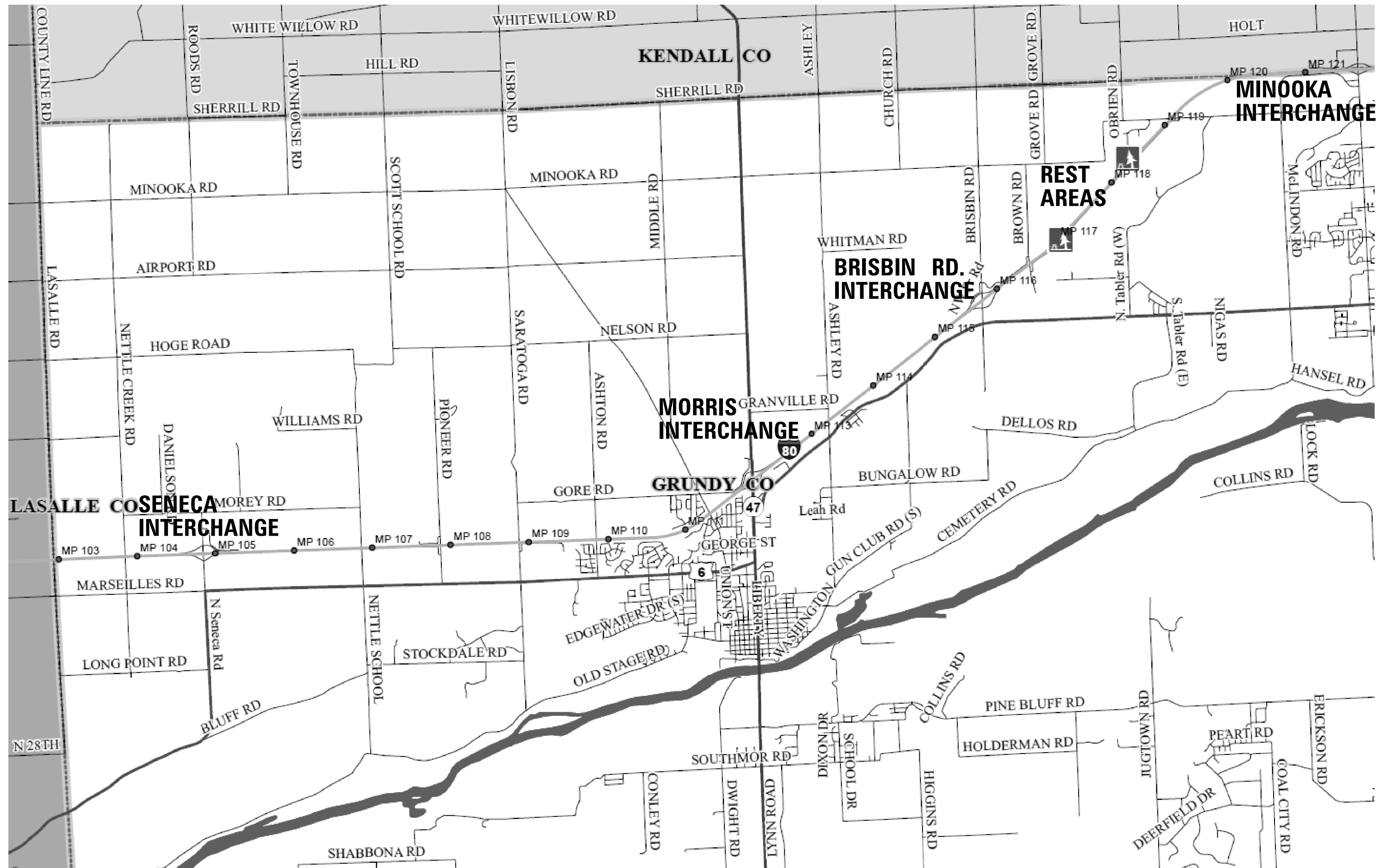
ROUTE	LOCATION	MILES	AREA	MILESTONE	ESCORT XP	URBAN / RURAL
			ACRES	GALLONS	POUNDS	
I-80	M.P. 102.9 TO 108.4	5.50	53	2.92	1.67	RURAL
I-80	SENECA INTERCHANGE	-	20	1.09	0.63	RURAL
I-80	M.P. 108.4 TO 114.4	6.00	58	3.18	1.82	URBAN
I-80	MORRIS INTERCHANGE (IL 47)	-	20	1.09	0.63	URBAN
I-80	M.P. 114.4 TO 115.6	1.20	12	0.64	0.36	RURAL
I-80	BRISBIN ROAD INTERCHANGE	-	20	1.09	0.63	RURAL
I-80	M.P. 115.6 TO 122.7	7.10	69	3.77	2.15	URBAN
I-80	EB & WB REST AREAS	-	14	0.77	0.44	URBAN
I-80	MINOOKA INTERCHANGE	-	18	0.98	0.56	URBAN
I-55	M.P. 218.2 TO M.P. 230.6	12.40	216	11.84	6.76	RURAL
I-55	DWIGHT INTERCHANGE (IL 47)	-	24	1.31	0.75	RURAL
I-55	GARDNER INTERCHANGE	-	20	1.09	0.63	RURAL
I-55	M.P. 230.6 TO M.P. 233.5	2.90	37	2.00	1.14	URBAN
I-55	BRAIDWOOD INTERCHANGE	-	20	1.09	0.63	URBAN
TOTALS		35.1	601	32.9	18.8	

APPLICATION RATES:

MILESTONE = 7.0 OUNCES (LIQUID) / ACRE

ESCORT XP HERBICIDE = 0.5 GRANULAR OUNCE (DRY) / ACRE

NON-IONIC SURFACTANT = 2 PINTS / 100 GALLONS WATER



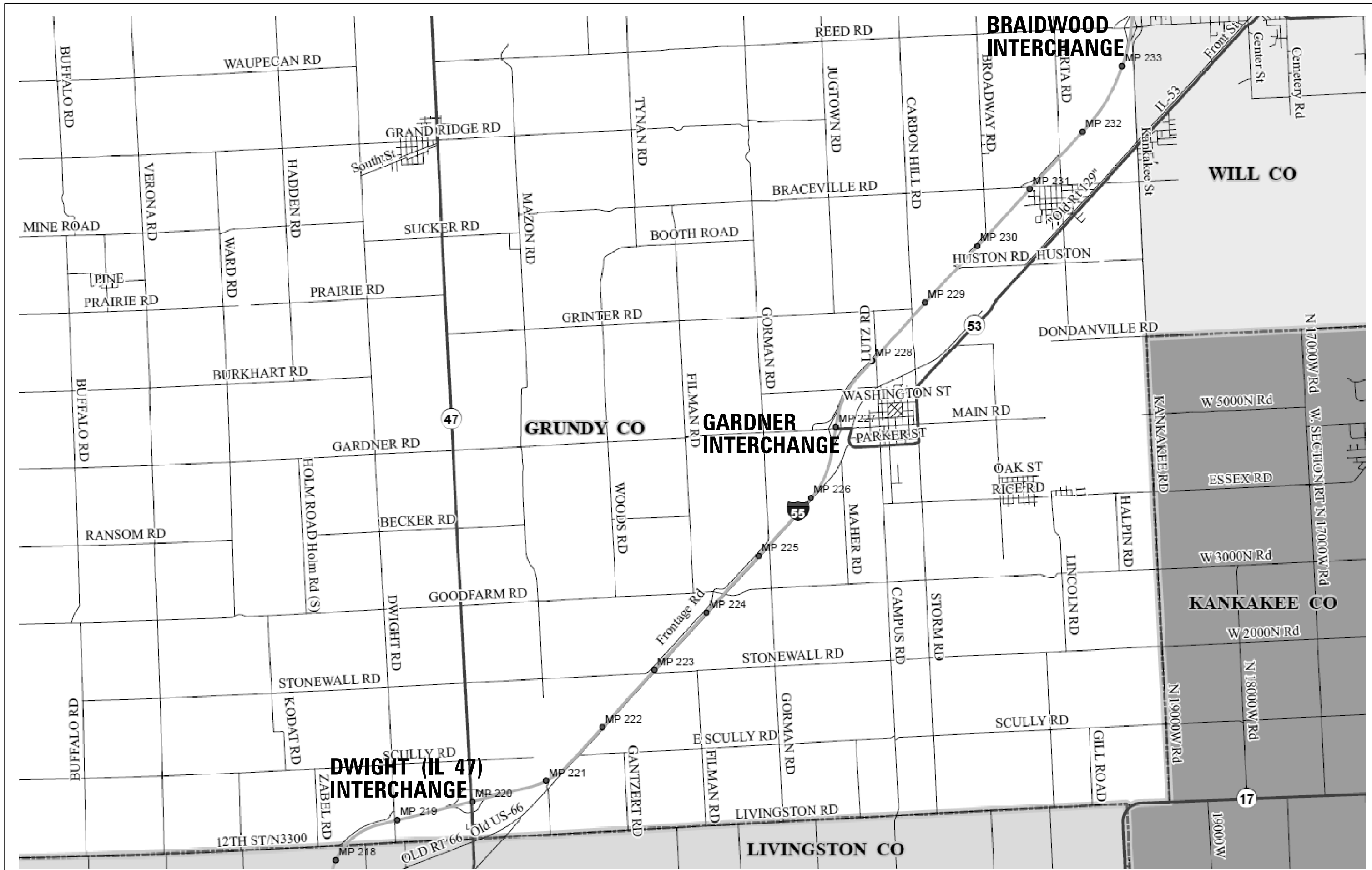
FILE NAME =	USER NAME = lukkaridp	DESIGNED -	REVISED -
et:\pwork\pwork\lukkaridp\0410538\038\AIB-sht-schedule.dgn		DRAWN -	REVISED -
		CHECKED -	REVISED -
		DATE -	REVISED -

**STATE OF ILLINOIS
DEPARTMENT OF TRANSPORTATION**

DETAILED LOCATION MAP FOR I-80

SCALE: SHEET NO. OF SHEETS STA. TO STA.

F.A.I. RTE.	SECTION	COUNTY	TOTAL SHEETS	SHEET NO.
80/55	2015-1 WEED SPRAY	GRUNDY	8	5
			CONTRACT NO. 66E30	
ILLINOIS FED. AID PROJECT				



FILE NAME =	USER NAME = lukkaridp	DESIGNED -	REVISED -
et:\pwork\pwork\lukkaridp\d0410538\036A18-sht-schedule.dgn		DRAWN -	REVISED -
PLOT SCALE = 100.0000' / 1"		CHECKED -	REVISED -
PLOT DATE = 10/24/2014		DATE -	REVISED -

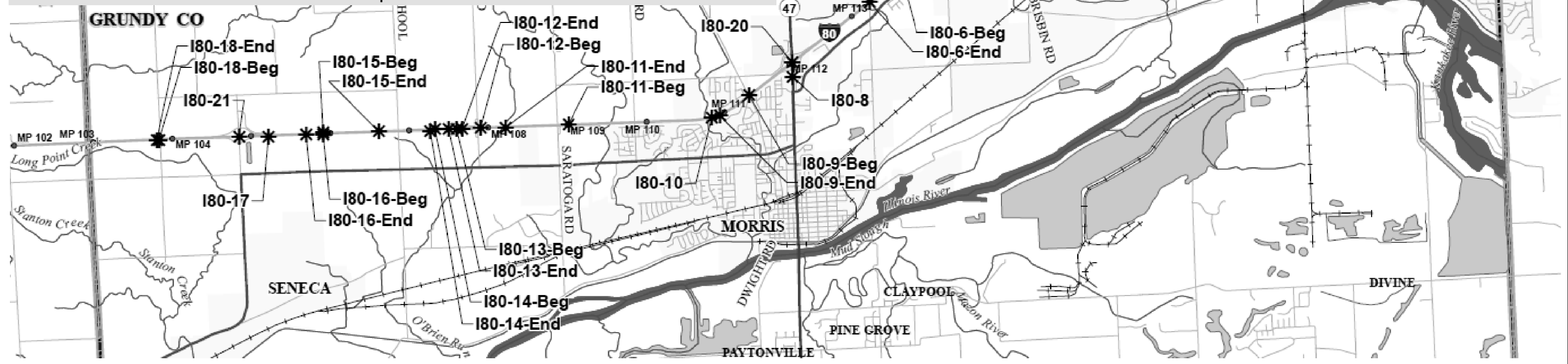
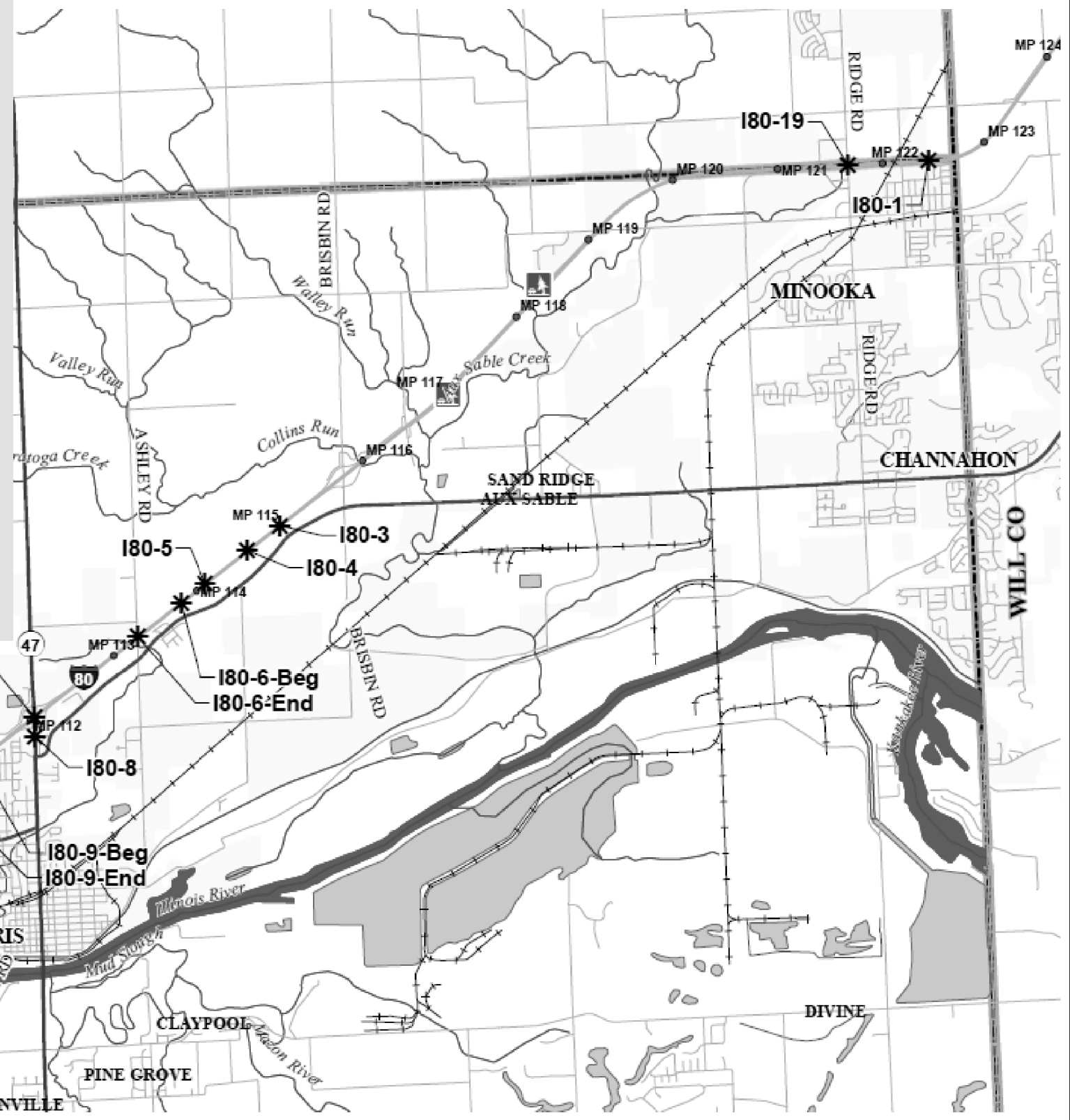
**STATE OF ILLINOIS
DEPARTMENT OF TRANSPORTATION**

DETAILED LOCATION MAP FOR I-55

SCALE: SHEET NO. OF SHEETS STA. TO STA.

F.A.I. RTE.	SECTION	COUNTY	TOTAL SHEETS	SHEET NO.
80/55	2015-1 WEED SPRAY	GRUNDY	8	6
CONTRACT NO. 66E30			ILLINOIS FED. AID PROJECT	

Pt No	Latitude	Longitude	Description
I80-1	41.462778	-88.256944	
I80-3	41.401389	-88.377222	MM115
I80-4	41.411111	-88.382778	Median
I80-5	41.406667	-88.390556	Median and ROW
I80-6-Beg	41.404132	-88.395019	Start
I80-6-End	41.399573	-88.403122	Stop
I80-8	41.386111	-88.422222	Rt. 47 Just s. of the interchange W. side of road (Big R)
I80-9-Beg	41.382778	-88.432778	Start ROW and Median
I80-9-End	41.379167	-88.44	Stop
I80-10	41.378889	-88.441944	EB ROW and Median
I80-11-Beg	41.378056	-88.476944	Start ROW and Median
I80-11-End	41.377778	-88.492222	Stop
I80-12-Beg	41.377778	-88.498333	Start ROW and Median
I80-12-End	41.377778	-88.502778	Stop
I80-13-Beg	41.377778	-88.504167	
I80-13-End	41.377778	-88.506111	Stop
I80-14-Beg	41.377778	-88.509444	Start
I80-14-End	41.3775	-88.510556	Stop
I80-15-Beg	41.3775	-88.536667	Start
I80-15-End	41.3775	-88.523056	Stop
I80-16-Beg	41.377222	-88.536667	Start
I80-16-End	41.377222	-88.540833	Stop
I80-17	41.376944	-88.55	
I80-18-Beg	41.376667	-88.576667	Start
I80-18-End	41.376667	-88.577222	Stop



Pt No	Latitude	Longitude	Description
I55-1	41.113889	-88.431667	MM 219 Bridge cone and ROW Fence
I55-2	41.114722	-88.428333	
I55-3	41.115556	-88.422778	
I55-5	41.118333	-88.406667	
I55-6	41.123611	-88.373056	
I55-7	41.125	-88.388056	
I55-8	41.126389	-88.386111	Median
I55-9	41.129722	-88.381944	
I55-10	41.136389	-88.373889	
I55-11	41.13833	-88.371389	
I55-12	41.139167	-88.370278	
I55-13-Beg	41.14	-88.368889	Start
I55-13-End	41.154444	-88.35111	Stop

