

STATE OF ILLINOIS  
DEPARTMENT OF TRANSPORTATION  
DIVISION OF HIGHWAYS

**PROPOSED  
HIGHWAY PLANS**

FAP ROUTE 635 (IL 114)  
SECTION (105) I-2  
PROJECT: ACHSIP-0635(008)  
SHOULDER WIDENING & RUMBLE STRIPS  
KANKAKEE COUNTY

C-93-023-15

F.A.P. RTE.	SECTION	COUNTY	TOTAL SHEETS	SHEET NO.
635	(105) I-2	KANKAKEE	6	1
		ILLINOIS	CONTRACT NO. 66E36	

INDEX OF SHEETS

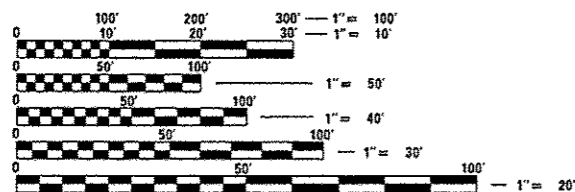
- 1 COVER SHEET
- 2 GENERAL NOTES
- 3 SUMMARY OF QUANTITIES
- 4 TYPICAL SECTIONS
- 5 SCHEDULES
- 6 DETAILS

STANDARDS

- |           |  |
|-----------|--|
| 000001-06 | STANDARD SYMBOLS, ABBREVIATIONS AND PATTERNS                               |
| 001008    | DECIMAL OF AN INCH AND OF A FOOT   |
| 406201-01 | MAILBOX TURNOUT  |
| 482001-02 | HMA SHOULDER ADJACENT TO FLEXIBLE PAVEMENT                                 |
| 482006-03 | HMA SHOULDER ADJACENT TO RIGID PAVEMENT                                    |
| 642006    | SHOULDER RUMBLE STRIPS, 8 INCH   |
| 701306-03 | LANE CLOSURE, 2L, 2W, SLOW MOVING OPERATIONS DAY ONLY, FOR SPEEDS ≥ 45 MPH |
| 701311-03 | LANE CLOSURE, 2L, 2W, MOVING OPERATIONS - DAY ONLY                         |
| 701326-04 | LANE CLOSURE, 2L, 2W, PAVEMENT WIDENING, FOR SPEEDS ≥ 45 MPH               |
| 701901-04 | TRAFFIC CONTROL DEVICES  |



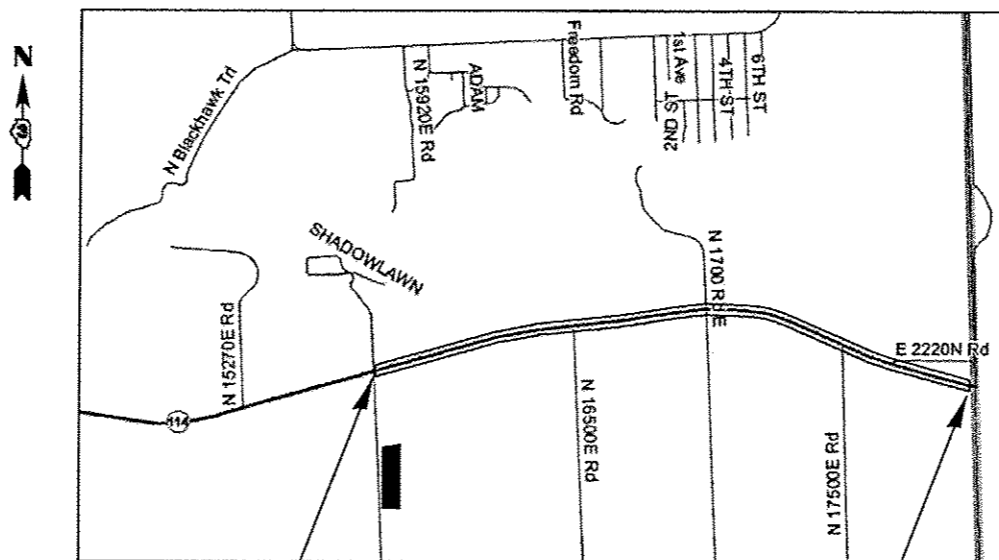
RURAL MINOR ARTERIAL  
2013 ADT = 3150  
P.V. = 50.0% S.U. = 7.1% M.U. = 42.9%



FULL SIZE PLANS HAVE BEEN PREPARED USING STANDARD ENGINEERING SCALES. REDUCED SIZED PLANS WILL NOT CONFORM TO STANDARD SCALES. IN MAKING MEASUREMENTS ON REDUCED PLANS, THE ABOVE SCALES MAY BE USED.

J.U.L.I.E.  
JOINT UTILITY LOCATION INFORMATION FOR EXCAVATION  
1-800-892-0123  
OR 811

PROJECT ENGINEER: JOE KANNEL, P.E.  
UNIT CHIEF: SCOTT FERGUSON, P.E.  
DISTRICT 3 NO. (815) 434-6131  
CONTRACT NO. 66E36



PROJECT BEGINS  
N 15750E RD  
STA 267+30

PROJECT ENDS  
STATE LINE RD  
STA 387+00

PROJECT GROSS & NET LENGTH = 12,526 FT. = 2.37 MILES

STATE OF ILLINOIS  
DEPARTMENT OF TRANSPORTATION  
DIVISION OF HIGHWAYS

SUBMITTED December 19, 2014

Paul Loetsch, P.E.  
DEPUTY DIRECTOR OF HIGHWAYS, REGION ENGINEER

Jan 30, 2015  
John D. Baranzelli, P.E.  
ENGINEER OF DESIGN AND ENVIRONMENT

Jan 30, 2015  
Chris Osman, P.E.  
DIRECTOR OF HIGHWAYS, CHIEF ENGINEER

PRINTED BY THE AUTHORITY  
OF THE STATE OF ILLINOIS

GENERAL NOTES

THE THICKNESS OF HMA SHOWN ON THE PLANS IS THE NOMINAL THICKNESS. DEVIATIONS FROM THE NOMINAL THICKNESS WILL BE PERMITTED WHEN SUCH DEVIATIONS OCCUR DUE TO IRREGULARITIES IN THE EXISTING SURFACE OR BASE ON WHICH THE HMA IS PLACED.

THE HMA SURFACE OF ALL MAILBOX TURNOUTS, PRIVATE ENTRANCES, COMMERCIAL ENTRANCES, AND SIDE ROADS SHALL BE MADE NEATLY, IN A WORKMANLIKE MANNER, AND SHALL ACCURATELY CONFORM TO THE SHAPES AND DIMENSIONS SHOWN ON THE PLAN DETAILS. IF REQUIRED BY THE ENGINEER, THE CONTRACTOR SHALL SAW CUT THE HMA SURFACE TO CONFORM TO THE SHAPES AND DIMENSIONS SHOWN ON THE PLAN DETAILS. THIS WORK WILL BE INCLUDED IN THE COST OF THE HMA SURFACE.

THE ENGINEER WILL BE THE SOLE JUDGE CONCERNING CURING TIME FOR THE VARIOUS HMA LIFTS.

FOR STABILIZATION, ALL TYPE III BARRICADES WILL REQUIRE A MINIMUM OF FOUR SAND BAGS PER BARRICADE.

ALL EXCAVATED MATERIAL, WHICH INCLUDES DIGGING OR GRADING OF ANY SOIL OR FILL MATERIAL, WITH THE EXCEPTION OF AGGREGATE FILLS, MUST BE INCORPORATED WITHIN THE IDOT RIGHT OF WAY DUE TO ENVIRONMENTAL DOCUMENTATION REQUIREMENTS.

ON EXISTING PAVEMENT WHICH MAY BE SUPERELEVATED, THE NEW HMA PAVEMENT SHALL BE BUILT WITH THE SAME SUPERELEVATION UNLESS NEW SUPERELEVATION RATES ARE GIVEN ON THE PLANS.

ANY REFERENCE TO A STANDARD IN THESE PLANS SHALL BE INTERPRETED TO MEAN THE EDITION AS INDICATED BY THE SUBNUMBER SHOWN IN THE LIST OF STANDARDS OR THE COPY INCLUDED IN THESE PLANS.

THE FOLLOWING RATES OF APPLICATION HAVE BEEN USED IN CALCULATING PLAN QUANTITIES:

HMA RESURFACING	112	LBS / 50 YD / IN
-----------------	-----	------------------

MEMBERS OF JULIE KNOWN TO BE WITHIN THE LIMITS OF THE IMPROVEMENT ARE:

NON-MEMBERS OF JULIE KNOWN TO BE WITHIN THE LIMITS OF THE IMPROVEMENT ARE:

THE CONTRACTOR SHALL CONTACT JULIE AT LEAST 48 HOURS PRIOR TO EXCAVATION TO DETERMINE WHICH UTILITIES ARE IN THE AREA.

COMMITMENTS:

STATE OF ILLINOIS  
DEPARTMENT OF TRANSPORTATION  
DISTRICT THREE

PREPARED BY: *T. Beaul*  
DISTRICT STUDIES & PLANS ENGINEER

DATE: December 19, 2014

EXAMINED BY: *Herb Jones*  
DISTRICT CONSTRUCTION ENGINEER

*[Signature]*  
DISTRICT MATERIALS ENGINEER

*[Signature]*  
DISTRICT OPERATIONS ENGINEER

FILE NAME *	USER NAME * budzynskim	DESIGNED -	REVISED -
es:\pwork\spw\dot\budzynskim\201410081\036636-shy-drtal1.dgn		DRAWN -	REVISED -
	PLOT SCALE * 100.0000 1/2 in.	CHECKED -	REVISED -
	PLOT DATE * 12/17/2014	DATE -	REVISED -

STATE OF ILLINOIS  
DEPARTMENT OF TRANSPORTATION

GENERAL NOTES

SCALE: SHEET OF SHEETS STA. TO STA.

F.A.P. RTE.	SECTION	COUNTY	TOTAL SHEETS	SHEET NO.
635	(105) 1-2	KANKAKEE	6	2
CONTRACT NO. 66E36			ILLINOIS FED. AID PROJECT	

10/1/14

CONSTR. CODE  
90% FED.  
10% STATE

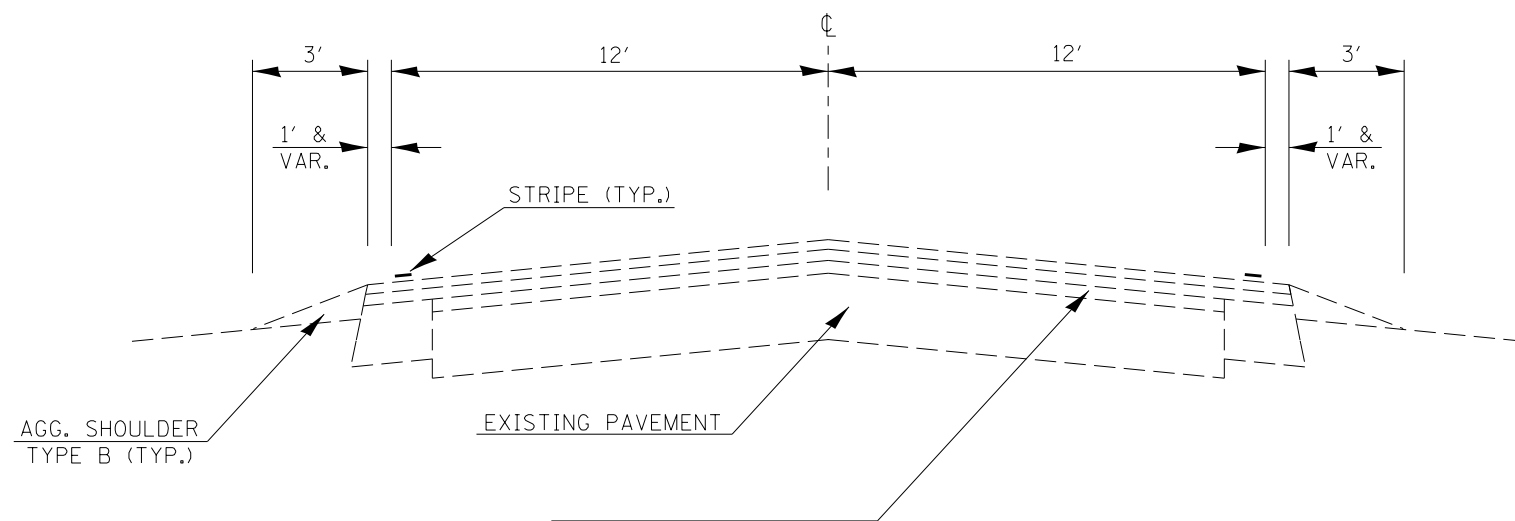
CODE NO.	ITEM	UNIT	TOTAL QUANTITY	ROADWAY
				0021 RURAL
20200600	EXCAVATING AND GRADING EXISTING SHOULDER	UNIT	186	186
40600275	BITUMINOUS MATERIALS (PRIME COAT)	POUND	3996	3996
40800050	INCIDENTAL HOT-MIX ASPHALT SURFACING	TON	69.5	69.5
44000157	HOT-MIX ASPHALT SURFACE REMOVAL, 2"	SQ YD	620.5	620.5
48203029	HOT-MIX ASPHALT SHOULDERS, 8"	SO YD	8265	8265
64200108	SHOULDER RUMBLE STRIPS, 8 INCH	FOOT	18597	18597
67100100	MOBILIZATION	L SUM	1.0	1.0
70100460	TRAFFIC CONTROL AND PROTECTION, STANDARD 701306	L SUM	1.0	1.0
70100500	TRAFFIC CONTROL AND PROTECTION, STANDARD 701326	L SUM	1.0	1.0
70103815	TRAFFIC CONTROL SURVEILLANCE	CAL DA	25	25
* 78001110	PAINT PAVEMENT MARKING - LINE 4"	FOOT	37194	37194
Z0030850	TEMPORARY INFORMATION SIGNING	SO FT	42	42
X0000001	SHOULDER REMOVAL (SPECIAL)	SO YD	8265	8265

X

13

\*Specialty Items

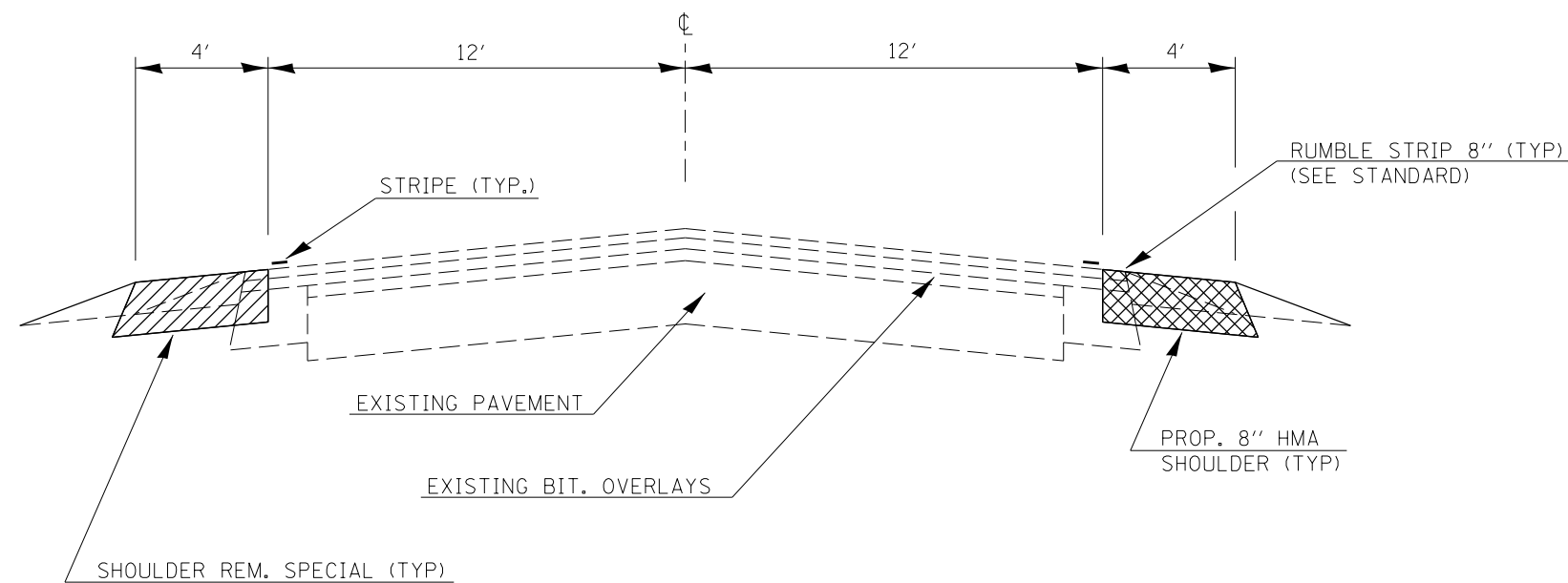
FILE NAME *	USER NAME = budzynskm	DESIGNED -	REVISED -	<b>STATE OF ILLINOIS DEPARTMENT OF TRANSPORTATION</b>	<b>SUMMARY OF QUANTITIES</b>				F.A.P. RTE.	SECTION	COUNTY	TOTAL SHEETS	SHEET NO.
66E36-shr-deta11a.dgn	66E36-shr-deta11a.dgn	DRAWN -	REVISED -		635	(105) 1-2	KANKAKEE	6	3				
PLDT SCALE = 1/8" = 1'-0"	CHECKED -	REVISED -	SCALE:		SHEET	OF	SHEETS	STA.	TO STA.	ILLINOIS FED. AID PROJECT			
PLDT DATE = 12/19/2014	DATE -	REVISED -	CONTRACT NO. 66E36										



**EXISTING TYPICAL SECTION**

N 15750E RD TO STATE LINE RD  
STA 267+00 TO STA 387+00

HMA MIXTURE REQUIREMENT TABLE		
LOCATION(S):	STA 267+30 TO STA 387+00	
MIXTURE USE(S):	SHOULDER BOTTOM LIFT(S)	SHOULDER TOP LIFT (2")
BINDER GRADE (PG):	PG 64-22	PG 64-22
DESIGN AIR VOIDS:	4.0% @ N50	4.0% @ N50
MIXTURE COMPOSITION: (MIXTURE GRADATION)	IL-19.0 FG	IL-9.5 FG
FRICTION AGGREGATE:	-	MIXTURE C
MIXTURE WEIGHT:	112.0 LB/SY/IN	112.0 LB/SY/IN
QUALITY MANAGEMENT PROGRAM:	QC/QA	QC/QA
SUBLOT SIZE:	N/A	N/A
DENSITY TEST METHOD:	CORES	% GROWTH CURVE



**PROPOSED TYPICAL SECTION**

N 15750E RD TO STATE LINE RD  
\*SEE SCHEDULE FOR LOCATIONS

FILE NAME =	USER NAME = budzynskim	DESIGNED -	REVISED -
et:\pw\work\p\dot\budzynskim\d0413501\0366E36-sh-t-details.dgn		DRAWN -	REVISED -
PLOT SCALE = 100.0000' / in.		CHECKED -	REVISED -
PLOT DATE = 12/17/2014		DATE -	REVISED -

**STATE OF ILLINOIS  
DEPARTMENT OF TRANSPORTATION**

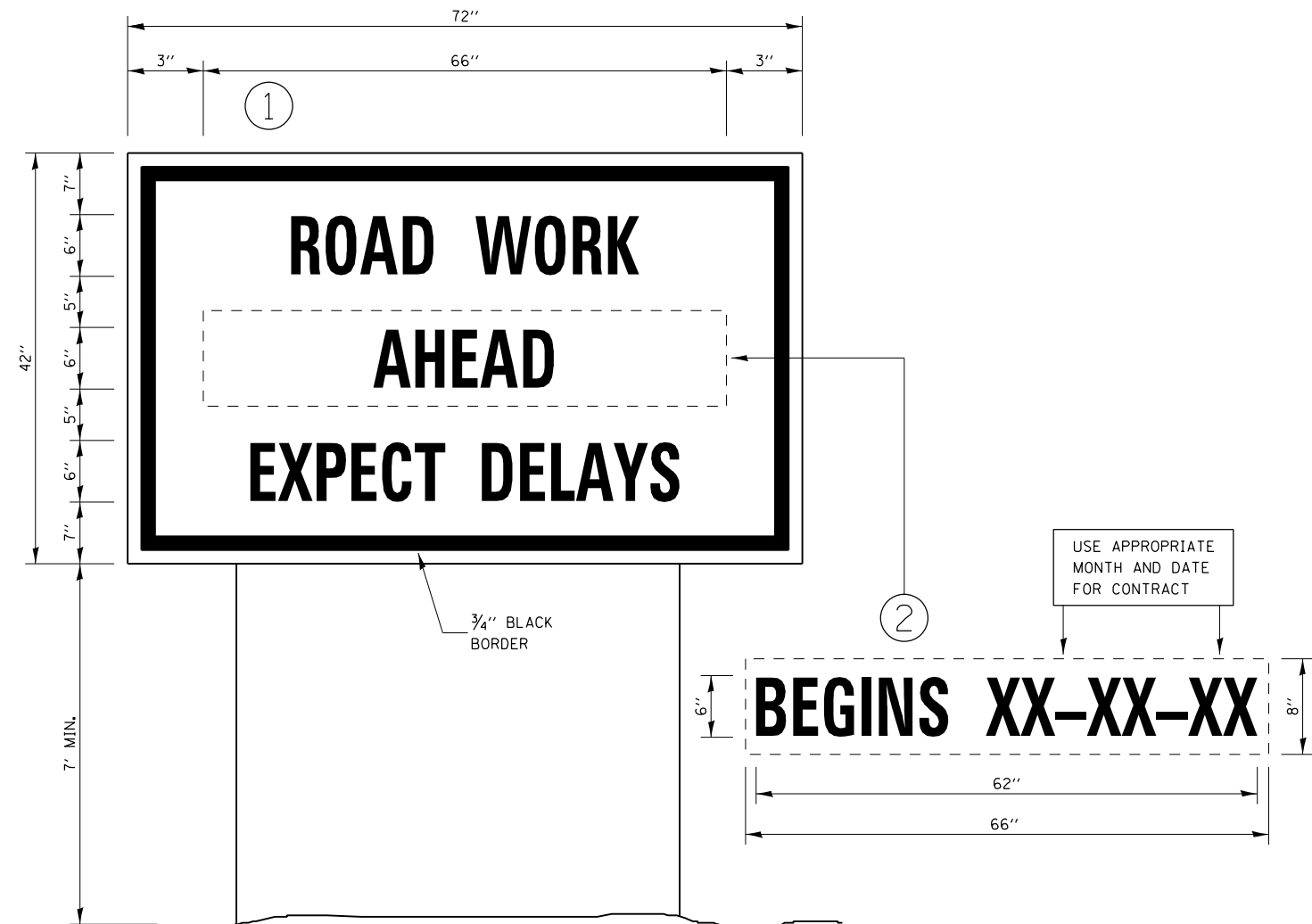
**TYPICAL SECTIONS**

SCALE: SHEET OF SHEETS STA. TO STA.

F.A.P. RTE.	SECTION	COUNTY	TOTAL SHEETS	SHEET NO.
635	(105) I-2	KANKAKEE	6	4
CONTRACT NO. 66E36				
ILLINOIS FED. AID PROJECT				

SHOULDER REMOVAL & REPLACEMENT SCHEDULE						
LOCATION	LENGTH	SHOULDER REMOVAL (SPECIAL)	HMA SHOULDERS 8"	BIT MTLs PRIME COAT	SHOULDER RUMBLE STRIPS 8"	PAINT PVMT MARKING 4"
	FOOT	SQ YD	SQ YD	POUND	FOOT	FOOT
<b>LEFT SIDE</b>						
STA 267+30 TO STA 311+12	4382	1948	1948	876	4382	8764
OMISSION - STA 311+12 TO 319+57						
STA 319+57 TO STA 363+92	4435	1971	1971	887	4435	8870
OMISSION - STA 363+92 TO 375+54						
STA 375+54 TO 389+27	1373	610	610	275	1373	2746
OMISSION - STA 389+27 TO STA 392+56						
<b>RIGHT SIDE</b>						
STA 267+30 TO STA 290+00	2270	1009	1009	454	2270	4540
OMISSION - STA 290+00 TO STA 307+96						
STA 307+96 TO STA 330+13	2217	985	985	443	2217	4434
OMISSION - STA 330+13 TO 353+36						
STA 353+36 TO 392+56	3920	1742	1742	784	3920	7840
<b>TOTAL</b>		<b>8265</b>	<b>8265</b>	<b>3719</b>	<b>18597</b>	<b>37194</b>

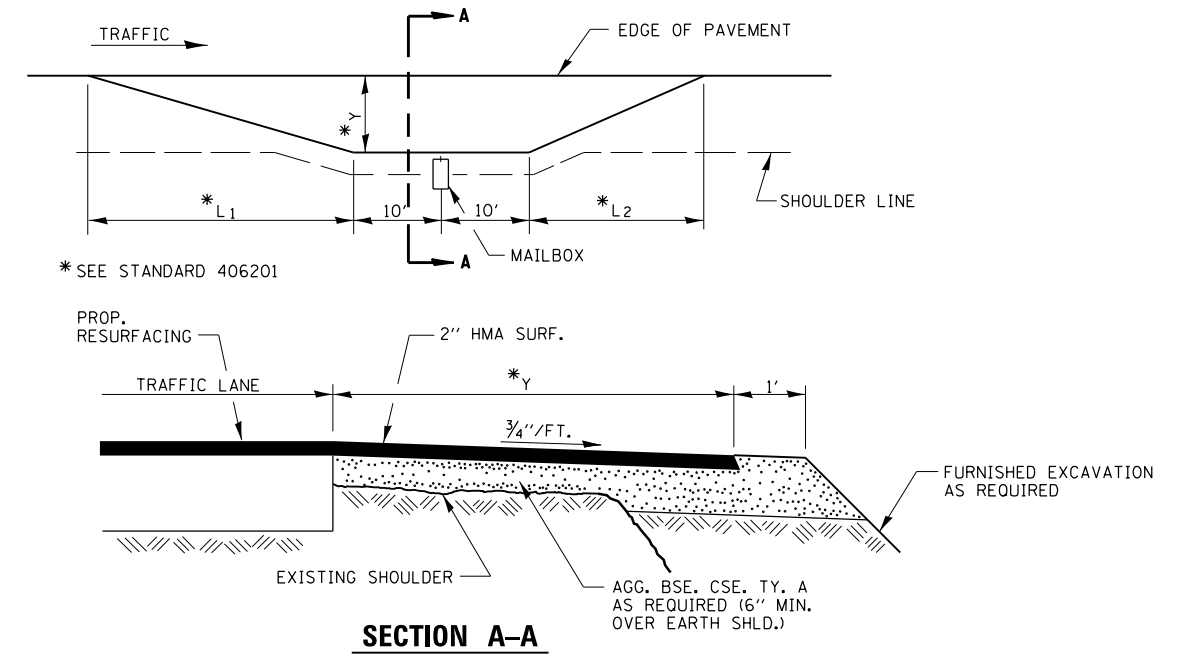
MAILBOX TURNOUT REMOVAL & REPLACEMENT SCHEDULE				
LOCATION	AREA	HMA SURF REMOVAL 2"	INCIDENTAL HMA SURF 2"	BIT MTLs PRIME COAT
	SQ YD	SQ YD	TON	POUND
STA 301+62 RT	40.9	40.9	4.6	18
STA 304+79 RT	40.9	40.9	4.6	18
STA 307+43 RT	40.9	40.9	4.6	18
STA 312+71 TO STA 314+29 RT	140.4	140.4	15.7	63
STA 323+80 RT	40.9	40.9	4.6	18
STA 326+44 RT	40.9	40.9	4.6	18
STA 367+62 TO STA 370+26 RT	234.7	234.7	26.3	106
STA 391+38 RT	40.9	40.9	4.6	18
<b>TOTAL</b>	<b>620.5</b>	<b>620.5</b>	<b>69.5</b>	<b>277</b>



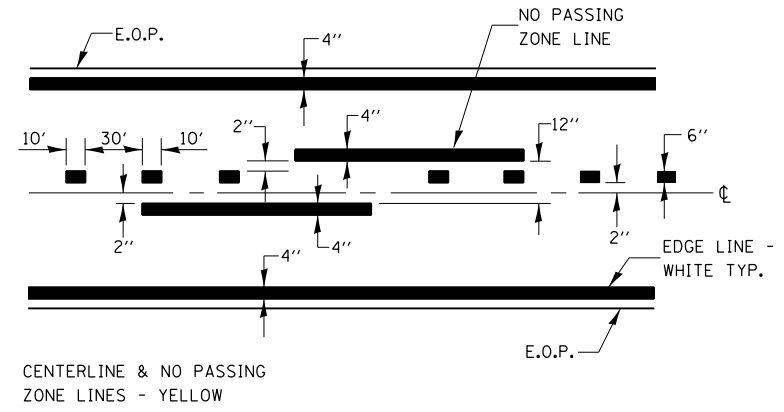
**TEMPORARY INFORMATION SIGNING**

**NOTES:**

1. USE 6" D BLACK LETTERING ON FLOURESENT ORANGE BACKGROUND.
2. ERECT SIGNS AT LOCATIONS IN ADVANCE OF THE "ROAD CONSTRUCTION AHEAD" SIGNS AS DIRECTED BY THE ENGINEER.
3. ERECT SIGN ① WITH INSTALLED PANEL ② A MINIMUM OF ONE WEEK PRIOR TO THE START OF THE LANE CLOSURE.
4. REMOVE PANEL ② ON THAT DATE.
5. SEE SPECIAL PROVISION "TEMPORARY INFORMATION SIGNING" FOR ADDITIONAL INFORMATION.
6. WILL BE PAID FOR PER SQ FT AS "TEMPORARY INFORMATION SIGNING". EACH SIGN = 21 SQ FT AND THE DATE PANEL ② WILL NOT BE MEASURED SEPARATELY FOR PAYMENT.



**RURAL MAILBOX TURNOUT DETAILS**



**PAVEMENT MARKING**

FILE NAME =	USER NAME = budzynskim	DESIGNED -	REVISED -	<b>STATE OF ILLINOIS DEPARTMENT OF TRANSPORTATION</b>	<b>DETAILS</b>	F.A.P. RTE.	SECTION	COUNTY	TOTAL SHEETS	SHEET NO.
ca:\pw_work\p\dot\budzynskim\d0413501\0366E36-sht-details.dgn	DRAWN -	REVISED -	635			(105) I-2	KANKAKEE	6	6	
PLOT SCALE = 100.0000' / 1in.	CHECKED -	REVISED -	CONTRACT NO. 66E36							
PLOT DATE = 12/17/2014	DATE -	REVISED -	ILLINOIS FED. AID PROJECT							
SCALE:						SHEET	OF	SHEETS	STA.	TO STA.