

STATE OF ILLINOIS
DEPARTMENT OF TRANSPORTATION
DIVISION OF HIGHWAYS

**PROPOSED
HIGHWAY PLANS**

**FAI ROUTE 55 (I-55)
SECTION (53-3) I-2
PROJECT : ACHSIP-0055 (412)
ADDITION OF CABLE MEDIAN BARRIER
LIVINGSTON COUNTY**

C-93-025-15

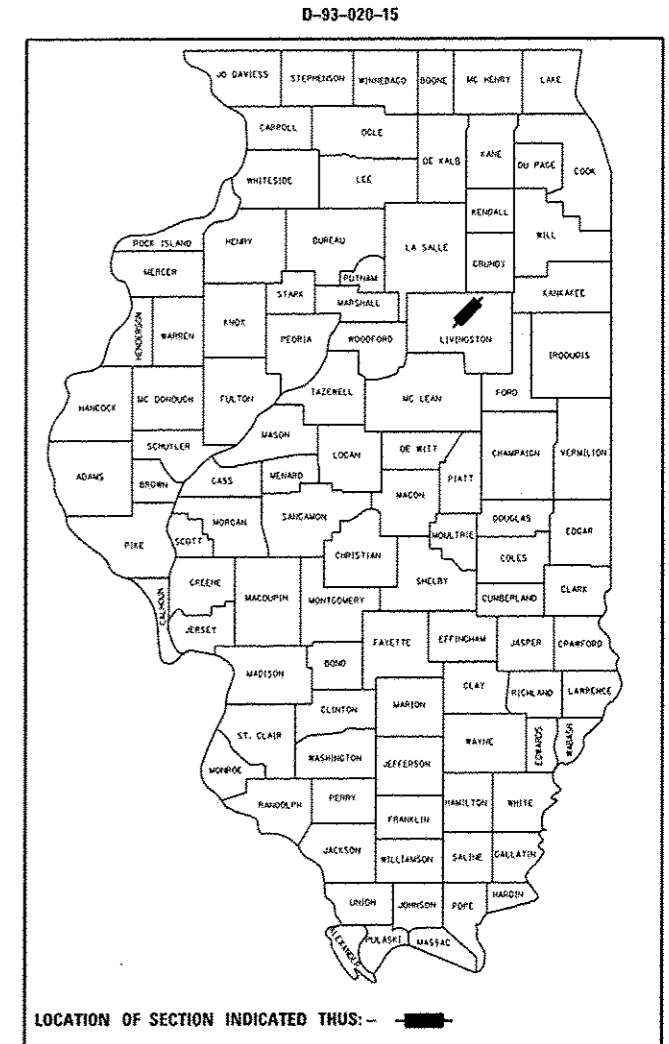
F.A.I. RTE.	SECTION	COUNTY	TOTAL SHEETS	SHEET NO.
55	(53-3) I-2	LIVINGSTON	6	1
		ILLINOIS	CONTRACT NO. 66E38	

INDEX OF SHEETS

- 1 COVER SHEET
- 2 GENERAL NOTES
- 3 SUMMARY OF QUANTITIES
- 4 TYPICAL SECTIONS
- 5 SCHEDULES
- 6 STANDARD 701400 (SPECIAL)

STANDARDS

- 000001-06 STANDARD SYMBOLS, ABBREVIATIONS AND PATTERNS
- 001006 DECIMAL OF AN INCH AND OF A FOOT
- 701101-04 OFF-ROAD OPERATIONS MULTILANE, 15' (4.5 m) TO 24' (600 mm) FROM PAVEMENT EDGE
- 701108-02 OFF-ROAD OPERATIONS, MULTILANE, MORE THAN 15' (4.5 m) AWAY
- 701406-08 LANE CLOSURE, FREEWAY/EXPRESSWAY, DAY OPERATIONS ONLY
- 701901-04 TRAFFIC CONTROL DEVICES



RURAL INTERSTATE
2013 ADT = 19,100
P.V. = 63.6% S.U. = 10.0% M.U. = 26.4%

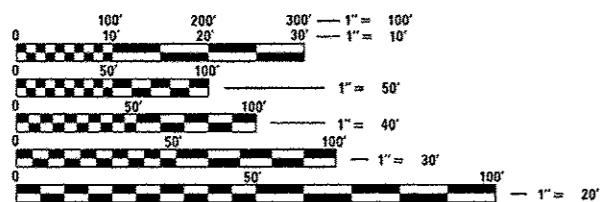
STATE OF ILLINOIS
DEPARTMENT OF TRANSPORTATION
DIVISION OF HIGHWAYS

SUBMITTED December 19, 2014
Paul Loete, P.E.
DEPUTY DIRECTOR OF HIGHWAYS, REGION ENGINEER

Jan 30, 2015
John D. Baranzelli, P.E.
acting ENGINEER OF DESIGN AND ENVIRONMENT

Jan 30, 2015
Omer Osman, P.E.
DIRECTOR OF HIGHWAYS, CHIEF ENGINEER

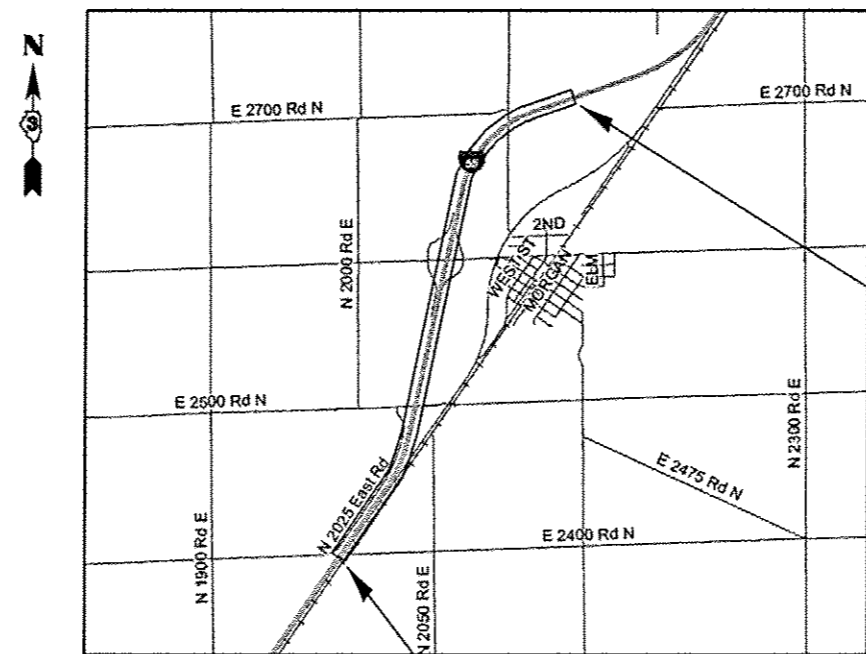
**PRINTED BY THE AUTHORITY
OF THE STATE OF ILLINOIS**



FULL SIZE PLANS HAVE BEEN PREPARED USING STANDARD ENGINEERING SCALES. REDUCED SIZED PLANS WILL NOT CONFORM TO STANDARD SCALES. IN MAKING MEASUREMENTS ON REDUCED PLANS, THE ABOVE SCALES MAY BE USED.

J.U.L.I.E.
JOINT UTILITY LOCATION INFORMATION FOR EXCAVATION
1-800-892-0123
OR 811

PROJECT ENGINEER: JOE KANNEL, P.E.
UNIT CHIEF: SCOTT FERGUSON, P.E.
DISTRICT 3 NO. (815) 434-6131
CONTRACT NO. 66E38



PROJECT ENDS
MILE MARKER 210.5

PROJECT BEGINS
MILE MARKER 207.0

PROJECT GROSS & NET LENGTH = 18,480 FT. = 3.5 MILES

GENERAL NOTES

THE THICKNESS OF HMA SHOWN ON THE PLANS IS THE NOMINAL THICKNESS. DEVIATIONS FROM THE NOMINAL THICKNESS WILL BE PERMITTED WHEN SUCH DEVIATIONS OCCUR DUE TO IRREGULARITIES IN THE EXISTING SURFACE OR BASE ON WHICH THE HMA IS PLACED.

THE ENGINEER WILL BE THE SOLE JUDGE CONCERNING CURING TIME FOR THE VARIOUS HMA LIFTS.

FOR STABILIZATION, ALL TYPE III BARRICADES WILL REQUIRE A MINIMUM OF FOUR SAND BAGS PER BARRICADE.

ALL EXCAVATED MATERIAL, WHICH INCLUDES DIGGING OR GRADING OF ANY SOIL OR FILL MATERIAL, WITH THE EXCEPTION OF AGGREGATE FILLS, MUST BE INCORPORATED WITHIN THE IDOT RIGHT OF WAY DUE TO ENVIRONMENTAL DOCUMENTATION REQUIREMENTS.

ANY REFERENCE TO A STANDARD IN THESE PLANS SHALL BE INTERPRETED TO MEAN THE EDITION AS INDICATED BY THE SUBNUMBER SHOWN IN THE LIST OF STANDARDS OR THE COPY INCLUDED IN THESE PLANS.

MEMBERS OF JULIE KNOWN TO BE WITHIN THE LIMITS OF THE IMPROVEMENT ARE:

NON-MEMBERS OF JULIE KNOWN TO BE WITHIN THE LIMITS OF THE IMPROVEMENT ARE:

THE CONTRACTOR SHALL CONTACT JULIE AT LEAST 48 HOURS PRIOR TO EXCAVATION TO DETERMINE WHICH UTILITIES ARE IN THE AREA.

COMMITMENTS:

STATE OF ILLINOIS
DEPARTMENT OF TRANSPORTATION
DISTRICT THREE

PREPARED BY: *Tom Benoit*
DISTRICT STUDIES & PLANS ENGINEER

DATE: December 19, 2014

EXAMINED BY: *Heidi Jones*
DISTRICT CONSTRUCTION ENGINEER

[Signature]
DISTRICT MATERIALS ENGINEER

[Signature]
DISTRICT OPERATIONS ENGINEER

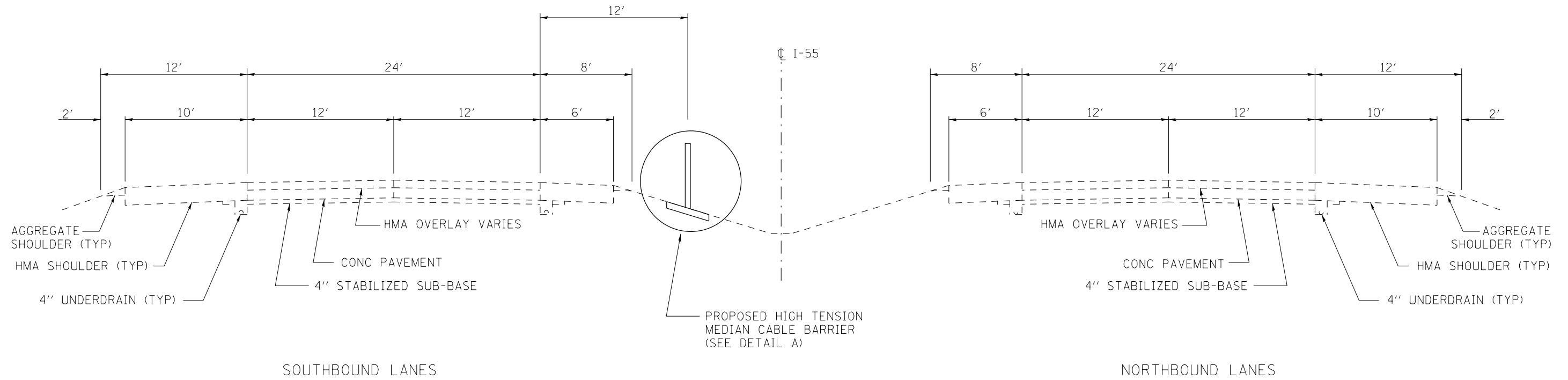
FILE NAME *	USER NAME * budzynskim	DESIGNED -	REVISED -	STATE OF ILLINOIS DEPARTMENT OF TRANSPORTATION	GENERAL NOTES	F.A.I. RTE.	SECTION	COUNTY	TOTAL SHEETS	SHEET NO.
c:\pwork\pwork\dot\budzynskim\d0413992\036E30-sh1-details.dgn	DRAWN -	REVISED -	55			(53-3) 1-2	LIVINGSTON	6	2	
PLOT SCALE * 100.0000 / / in.	CHECKED -	REVISED -	CONTRACT NO. 66E38							
PLOT DATE * 12/19/2014	DATE -	REVISED -	ILLINOIS FED. AID PROJECT							
					SCALE:	SHEET	OF	SHEETS	STA.	TO STA.

CONSTR. CODE
90% F.E.D.
10% STATE

CODE NO.	ITEM	UNIT	TOTAL QUANTITY	ROADWAY
				0021 RURAL
64401100	HIGH TENSION CABLE MEDIAN BARRIER	FOOT	18480	18480
64401200	HIGH TENSION CABLE MEDIAN BARRIER DEMONSTRATION	EACH	1	1
64401300	HIGH TENSION CABLE MEDIAN BARRIER TERMINALS	EACH	6	6
67100100	MOBILIZATION	L SUM	1	1
78202000	TERMINAL MARKER - POST MOUNTED	EACH	6	6
X0325231	CABLE GUARD MARKER	EACH	462	462
X0325667	WEED CONTROL MOWING STRIP (SPECIAL)	50 YD	8213	8213
X7010410	SPEED DISPLAY TRAILER	CAL MO	2	2
X7010600	TRAFFIC CONTROL AND PROTECTION, STANDARD 701406, SPECIAL	L SUM	1.0	1.0

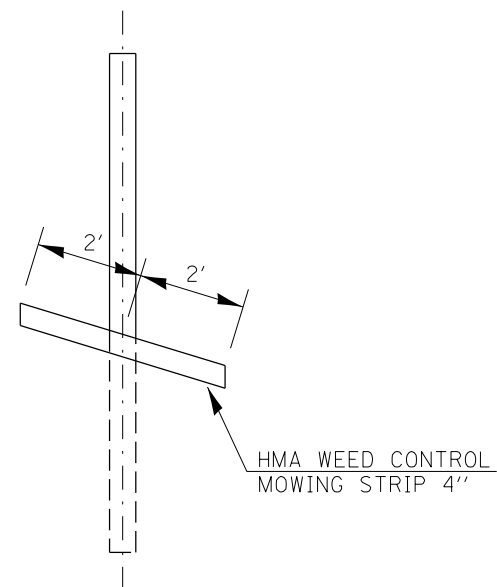
Rev.

FILE NAME *	USER NAME # budzynskm	DESIGNED -	REVISED -	STATE OF ILLINOIS DEPARTMENT OF TRANSPORTATION	SUMMARY OF QUANTITIES				F.A.I. RATE	SECTION	COUNTY	TOTAL SHEETS	SHEET NO.
er\pwwork\pwwork\budzynskm\08413992\0	66E38-ekt-details.dgn	DRAWN -	REVISED -		55	(53-3) 1-2	LIVINGSTON	6	3				
	PLOT SCALE # 1/8"=1'-0"	CHECKED -	REVISED -		SCALE: SHEET OF SHEETS STA. TO STA.				ILLINOIS FED. AID PROJECT				
	PLOT DATE # 12/19/2014	DATE -	REVISED -		CONTRACT NO. 66E38								



PROPOSED TYPICAL SECTION

MM 207.0 TO MM 210.5



DETAIL A

HMA MIXTURE REQUIREMENT TABLE	
LOCATION(S):	MM 207.0 TO MM 210.5
MIXTURE USE(S):	WEED CONTROL MOWING STRIP
BINDER GRADE (PG):	PG 64-22
DESIGN AIR VOIDS:	4.0% @ N50
MIXTURE COMPOSITION: (MIXTURE GRADATION)	IL-9.5
FRICTION AGGREGATE:	MIXTURE C
MIXTURE WEIGHT:	112.0 LB/SY/IN
QUALITY MANAGEMENT PROGRAM:	QC/QA
SUBLOT SIZE:	N/A
DENSITY TEST METHOD:	SATISFACTION OF ENGINEER

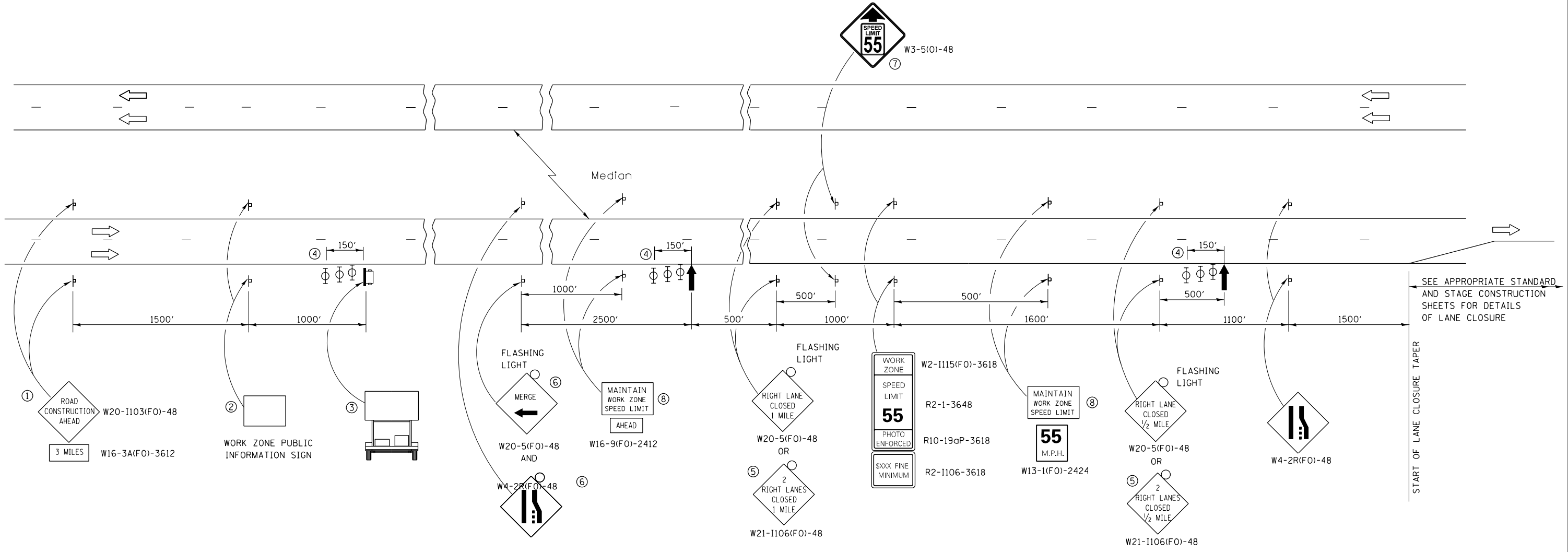
FILE NAME =	USER NAME = budzynskim	DESIGNED -	REVISED -
et:\pwork\pwork\budzynskim\d0413992\0366E38-sht-detail.dgn		DRAWN -	REVISED -
	PLOT SCALE = 100.0000' / 1in.	CHECKED -	REVISED -
	PLOT DATE = 12/19/2014	DATE -	REVISED -

**STATE OF ILLINOIS
DEPARTMENT OF TRANSPORTATION**

TYPICAL SECTIONS			
SCALE:	SHEET	OF SHEETS	STA. TO STA.

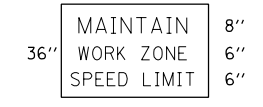
F.A.I. RTE.	SECTION	COUNTY	TOTAL SHEETS	SHEET NO.
55	(53-3) I-2	LIVINGSTON	6	4
CONTRACT NO. 66E38				
ILLINOIS FED. AID PROJECT				

CABLE BARRIER INSTALLATION SCHEDULE						
LOCATION	LENGTH	HT CBL MEDIAN BARRIER	CABLE GUARD MARKER	HT CBL MED BAR TERM	TERMINAL MARKER - POST MOUNTED	WEED CONTRL MOWING STRIP (SPECIAL)
	FOOT	FOOT	EACH	EACH	EACH	SQ YD
START MM 207				1	1	
MM 207 TO MM 208.3 MEDIAN CROSSOVER	6864	6864	172			3051
MM 208.3 TO MM 209.9 MEDIAN CROSSOVER	8448	8448	211	2	2	3755
MM 209.9 TO MM 210.5 MEDIAN CROSSOVER	3168	3168	79	2	2	1408
END MM 210.5				1	1	
TOTAL	18480	18480	462	6	6	8213



- ① THE ROAD CONSTRUCTION AHEAD SIGN SHALL BE LOCATED 3 MILES IN ADVANCE OF THE PROJECT LIMITS.
- ② THE MESSAGE AND SIZE OF THE WORK ZONE PUBLIC INFORMATION SIGN SHALL BE AS SPECIFIED BY THE DEPARTMENT.
- ③ TO BE PLACED IN THE MEDIAN WHEN FEASIBLE. THE MESSAGE BOARD SHALL BE USED TO DISPLAY STATUS OF LANES WITHIN THE PROJECT. THE PRIMARY MESSAGES SHALL BE:
 "RIGHT LANE CLOSED" / " x MILES AHEAD"
 "LEFT LANE CLOSED" / " x MILES AHEAD"
 "ALL LANES OPEN"
- ④ THREE, TYPE II BARRICADES, DRUMS, OR VERTICAL BARRICADES AT 50' CENTERS.
- ⑤ THIS SIGN SHALL BE USED WHEN 2 LANES ARE CLOSED.
- ⑥ WHEN THE LEFT LANE IS CLOSED, SWITCH THESE TWO SIGNS AND THE DIRECTION OF THE MERGE ARROW.
- ⑦ THIS SIGN SHALL ONLY BE USED IF THE EXISTING SPEED LIMIT IS GREATER THAN 65 MPH.

⑧ 48"x36" FLUORESCENT ORANGE SIGN WITH BLACK LETTERS.
48"



- ↑ ARROW BOARD
- ☐ PORTABLE CHANGEABLE MESSAGE SIGN
- ⊥ SIGN
- ⊕ TYPE II BARRICADE, DRUM, OR VERTICAL BARRICADE WITH MONODIRECTIONAL FLASHING LIGHT

GENERAL NOTE:

THIS STANDARD IS USED WHERE AT ANY TIME A LANE IS CLOSED ON A FREEWAY/EXPRESSWAY.

WHEN THE LEFT LANE IS CLOSED, LEFT LANE CLOSED SIGNS SHALL BE SUBSTITUTED FOR THE RIGHT LANE CLOSED SIGNS.

THE FIRST TWO SIGNS AND THE MESSAGE BOARD ARE STATIONARY. THE OTHER SIGNS AND ARROWBOARDS SHALL BE MOVED AS NECESSARY TO MAINTAIN THE REQUIRED DISTANCE FROM THE START OF THE LANE CLOSURE TAPER(S).

SEE SPECIAL PROVISIONS.

ALL DIMENSIONS ARE IN INCHES UNLESS OTHERWISE SHOWN.

FILE NAME =	USER NAME = budzynskim	DESIGNED -	REVISED -	STATE OF ILLINOIS DEPARTMENT OF TRANSPORTATION	STANDARD 701400 (SPECIAL)				F.A.I. RTE.	SECTION	COUNTY	TOTAL SHEETS	SHEET NO.
et:\pw\work\p\dot\budzynskim\d0413992\0366E38-sht-de tails.dgn		DRAWN -	REVISED -		55	(53-3) I-2	LIVINGSTON	6	6				
PLOT SCALE = 100.0000' / 1in.		CHECKED -	REVISED -		SCALE: SHEET NO. OF SHEETS STA. TO STA.				CONTRACT NO. 66E38				
PLOT DATE = 12/19/2014		DATE -	REVISED -		FED. ROAD DIST. NO. ILLINOIS FED. AID PROJECT								