

F.A.# RTE.	SECTION	COUNTY	TOTAL SHEETS	SHEET NO.
=VAR	***	**	17	1
ILLINOIS CONTRACT NO. 72H46				

\*\*\* D6 CABLE/GUARDRAIL 2015-1  
\*\* VARIOUS

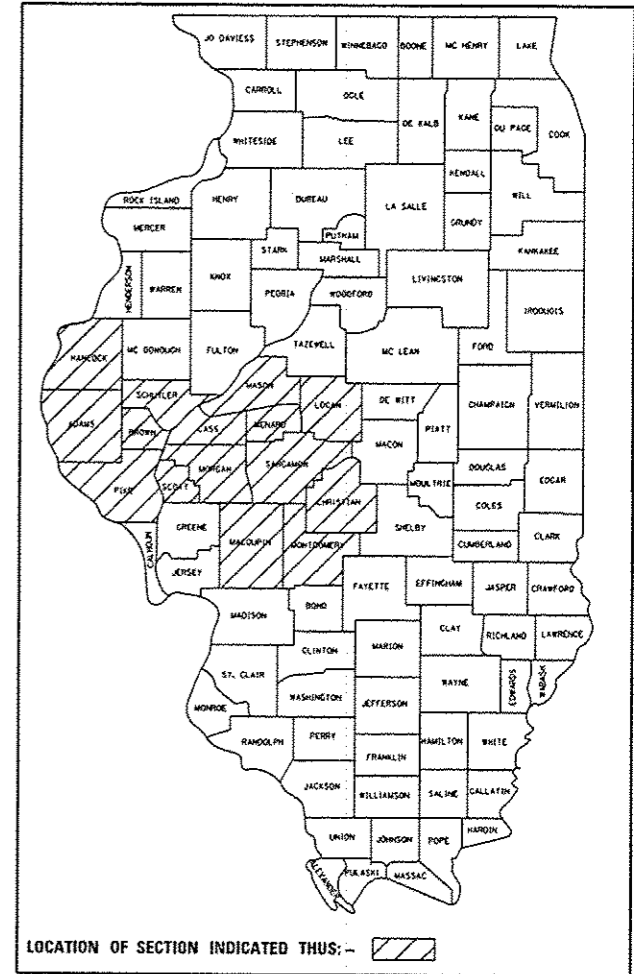
D-96-019-16

**STATE OF ILLINOIS  
DEPARTMENT OF TRANSPORTATION  
DIVISION OF HIGHWAYS**

**PROPOSED  
HIGHWAY PLANS**

**VARIOUS ROUTES  
SECTION D6 CABLE /GUARDRAIL 2015-1  
SAFETY ITEM REPAIR  
VARIOUS COUNTIES IN D6**

C-96-019-15



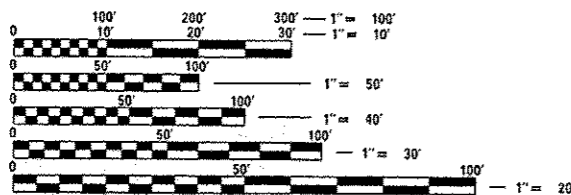
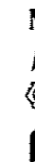
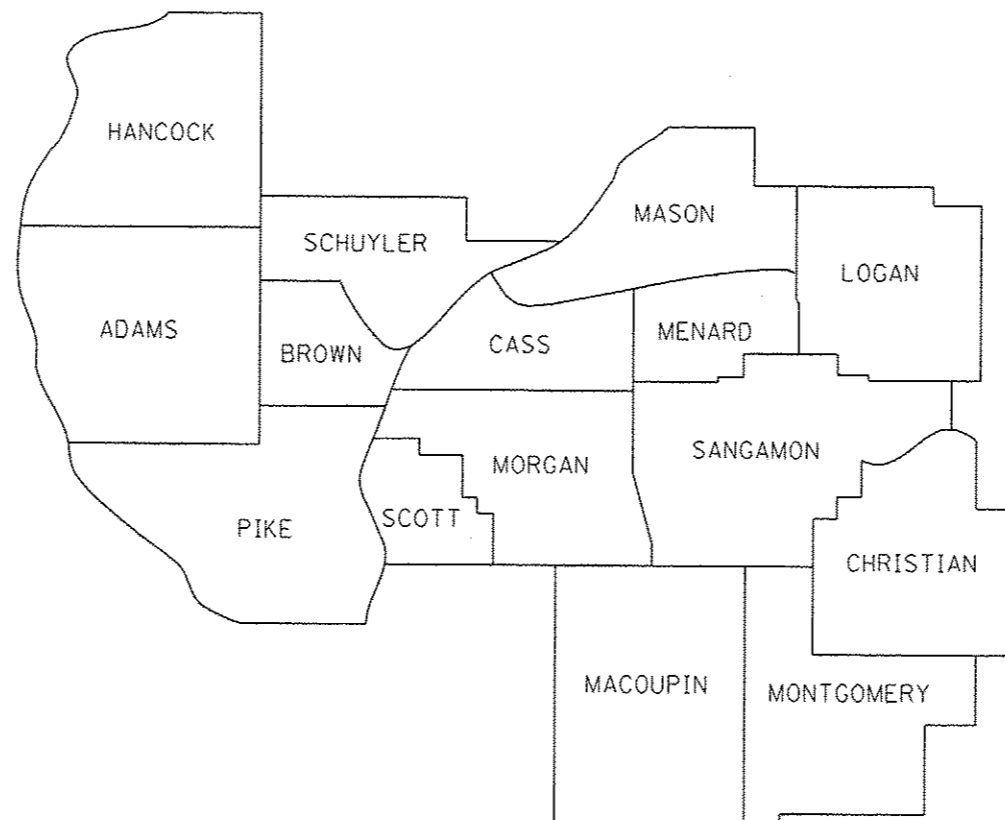
**INDEX OF SHEETS**

- 1 COVERSHEET
- 2 GENERAL NOTES
- 3-5 SUMMARY OF QUANTITIES
- 6-16 PRE-MGS HIGHWAY STANDARDS
- 17 CABLE GUARD MARKER DETAIL

FOR LIST OF STANDARDS, SEE SHEET NO. 2

**NOTE:**

SECTION D6 CABLE /GUARDRAIL 2015-1  
CONSISTS OF REPAIR OF DAMAGED  
GUARDRAIL AND OTHER ITEM AS  
DIRECTED BY THE ENGINEER ON  
VARIOUS ROUTES IN IDOT DISTRICT  
SIX UNDER STATE JURISDICTION



FULL SIZE PLANS HAVE BEEN PREPARED USING STANDARD  
ENGINEERING SCALES. REDUCED SIZED PLANS WILL NOT  
CONFORM TO STANDARD SCALES. IN MAKING MEASUREMENTS  
ON REDUCED PLANS, THE ABOVE SCALES MAY BE USED.

J.U.L.I.E.  
JOINT UTILITY LOCATION INFORMATION FOR EXCAVATION  
1-800-892-0123  
OR 811

PROJECT ENGINEER VINCE MADONIA 217-785-9046  
TEAM ENGINEER JAY EDWARDS 217-785-5321

CONTRACT NO. 72H46

STATE OF ILLINOIS  
DEPARTMENT OF TRANSPORTATION  
DIVISION OF HIGHWAYS

SUBMITTED October 24 20 14  
R. J. Smith  
DEPUTY DIRECTOR OF HIGHWAYS, REGION ENGINEER

Jan 30 20 15  
John D. Baranzelli, PE  
ENGINEER OF DESIGN AND ENVIRONMENT

Jan 30 20 15  
Emir Osman, PE  
DIRECTOR OF HIGHWAYS, CHIEF ENGINEER

**PRINTED BY THE AUTHORITY  
OF THE STATE OF ILLINOIS**

**HIGHWAY STANDARDS**

STANDARD NO.	TITLE
630001-10	STEEL PLATE BEAM GUARDRAIL
630301-06	SHOULDER WIDENING FOR TYPE 1 (SPECIAL) GUARDRAIL TERMINALS
631011-09	TRAFFIC BARRIER TERMINAL, TYPE 2
631026-06	TRAFFIC BARRIER TERMINAL, TYPE 5
631031-13	TRAFFIC BARRIER TERMINAL, TYPE 6
635006-03	REFLECTOR AND TERMINAL MARKER PLACEMENT
643001-02	SAND MODULE IMPACT ATTENUATORS
664001-02	CHAIN LINK FENCE
665001-02	WOVEN WIRE FENCE
701001-02	OFF-ROAD OPERATIONS, 2L, 2W, MORE THAN 15' (4.5 M) AWAY
701006-05	OFF-ROAD OPERATIONS, 2L, 2W, 15' (4.5 M) TO 24" (600 MM) FROM PAVEMENT EDGE
701101-04	OFF-ROAD OPERATIONS, MULTILANE, 15' (4.5 M) TO 24" (600 MM) FROM PAVEMENT EDGE
701106-02	OFF-ROAD OPERATIONS, MULTILANE, MORE THAN 15' (4.5 M) AWAY
701201-04	LANE CLOSURE, 2L, 2W, DAY ONLY, FOR SPEEDS > 45 MPH
701301-04	LANE CLOSURE, 2L, 2W, SHORT TIME OPERATIONS
701400-08	APPROACH TO LANE CLOSURE, FREEWAY/EXPRESSWAY
701406-09	LANE CLOSURE, FREEWAY/EXPRESSWAY, DAY OPERATIONS ONLY
701411-09	LANE CLOSURE, MULTILANE, AT ENTRANCE OR EXIT RAMP, FOR SPEEDS > 45 MPH
701421-07	LANE CLOSURE, MULTILANE, DAY OPERATIONS ONLY, FOR SPEEDS > 45 MPH TO 55 MPH
701422-07	LANE CLOSURE, MULTILANE, FOR SPEEDS > 45 MPH TO 55 MPH
701426-07	LANE CLOSURE, MULTILANE, INTERMITTENT OR MOVING OPERATION, FOR SPEEDS ≥ 45 MPH
701427-03	LANE CLOSURE, MULTILANE, INTERMITTENT OR MOVING OPERATION, FOR SPEEDS < 40 MPH
701456-03	PARTIAL EXIT RAMP CLOSURE FREEWAY/EXPRESSWAY
701501-06	URBAN LANE CLOSURE, 2L, 2W, UNDIVIDED
701502-06	URBAN LANE CLOSURE, 2L, 2W, WITH BIDIRECTIONAL LEFT TURN LANE
701601-09	URBAN LANE CLOSURE, MULTILANE, 1W OR 2W WITH NONTRAVERSABLE MEDIAN
701602-07	URBAN LANE CLOSURE, MULTILANE, 2W WITH BIDIRECTIONAL LEFT TURN LANE
701606-10	URBAN LANE CLOSURE, MULTILANE, 2W WITH MOUNTABLE MEDIAN
701701-09	URBAN LANE CLOSURE, MULTILANE INTERSECTION
701901-04	TRAFFIC CONTROL DEVICES

ADD:

701428

Traffic Control Setup and  
Removal Freeway/Expressway

**GENERAL NOTES**

ALL DISTURBED AREAS CAUSED BY THE CONTRACTOR'S OPERATIONS SHALL BE GRADED AND SEEDED WITH CLASS 2 ROADSIDE MIXTURE AND FERTILIZED AS STATED IN SECTION 250 OF THE STANDARD SPECIFICATIONS. COST SHALL BE CONSIDERED INCLUDED IN THE UNIT COST OF THE WORK BEING PERFORMED.

REMOVAL OF DAMAGED IMPACT ATTENUATORS SHALL BE INCLUDED IN THE COST OF THE IMPACT ATTENUATOR BEING INSTALLED.

REMOVAL AND DISPOSAL OF DAMAGED FENCE SHALL BE INCLUDED IN THE COST OF THE FENCE BEING INSTALLED.

DISTRICT SIX	
EXAMINED	OCTOBER 20 <sup>th</sup> 20 14
<i>John C. Williams</i>	
OPERATIONS ENGINEER	
EXAMINED	October 10 20 14
<i>Ron Buchanan</i>	
PROJECT IMPLEMENTATION ENGINEER	
EXAMINED	October 14 20 14
<i>Charles P. Brown</i>	
PROGRAM DEVELOPMENT ENGINEER	

FILE NAME *	USER NAME * perarava	DESIGNED -	REVISED -	STATE OF ILLINOIS DEPARTMENT OF TRANSPORTATION	GENERAL NOTES	F.A. RTE.	SECTION	COUNTY	TOTAL SHEETS	SHEET NO.	
ei:\pe_work\pido\perarava\d0416731\007	7246-shr-gennote.dgn	DRAWN -	REVISED -			*VAR	***	**	17	2	
	PLOT SCALE * 100.0000' / in.	CHECKED -	REVISED -			CONTRACT NO. 72H46					
Default	PLOT DATE * Oct-24-2014 07:19:28AM	DATE -	REVISED -			SCALE:	SHEET	OF	SHEETS	STA.	TO STA.

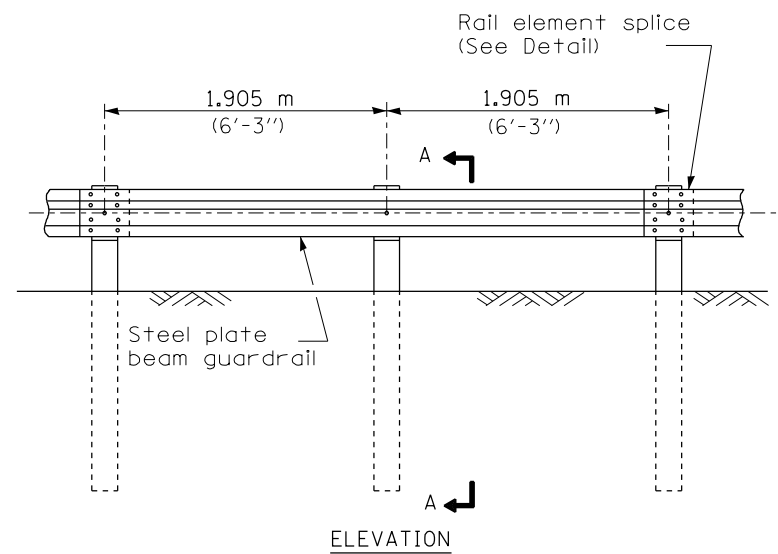
CODE	ITEM	UNIT	CONSTRUCTION CODE
			100% STATE
			6-00481-0000
			ROADWAY 0021
63000001	STEEL PLATE BEAM GUARDRAIL, TYPE A, 6 FOOT POSTS	FOOT	275
63000003	STEEL PLATE BEAM GUARDRAIL, TYPE A, 9 FOOT POSTS	FOOT	150
63100045	TRAFFIC BARRIER TERMINAL, TYPE 2	EACH	1
63100070	TRAFFIC BARRIER TERMINAL, TYPE 5	EACH	1
63100085	TRAFFIC BARRIER TERMINAL, TYPE 6	EACH	1
63100167	TRAFFIC BARRIER TERMINAL, TYPE 1 (SPECIAL) TANGENT	EACH	12
63100169	TRAFFIC BARRIER TERMINAL, TYPE 1 (SPECIAL) FLARED	EACH	1
63200310	GUARDRAIL REMOVAL	FOOT	750
64300450	IMPACT ATTENUATORS (NON-REDIRECTIVE), TEST LEVEL 3	EACH	1
64401300	HIGH TENSION CABLE MEDIAN BARRIER TERMINALS	EACH	1
66400105	CHAIN LINK FENCE, 4'	FOOT	250
66500105	WOVEN WIRE FENCE, 4'	FOOT	250
67100100	MOBILIZATION	L SUM	1
70100420	TRAFFIC CONTROL AND PROTECTION, STANDARD 701411	EACH	3

FILE NAME *	USER NAME * sparkgn	DESIGNED -	REVISED -	<b>STATE OF ILLINOIS DEPARTMENT OF TRANSPORTATION</b>	<b>SUMMARY OF QUANTITIES</b>			F.A. RTE.	SECTION	COUNTY	TOTAL SHEETS	SHEET NO.	
Default		CHECKED -	REVISED -					*VAR	***	**	17	3	
		DATE -	REVISED -		SCALE:	SHEET	OF	SHEETS	STA.	TO STA.	ILLINOIS FED. AID PROJECT		
											CONTRACT NO. 72H46		

CODE	ITEM	UNIT	CONSTRUCTION CODE
			100% STATE
			6-00481-0000
			ROADWAY
			0021
78200410	GUARDRAIL MARKERS, TYPE A	EACH	250
78201000	TERMINAL MARKER - DIRECT APPLIED	EACH	25
Z0008759	CALL OUT	EACH	22
Z0008760	EMERGENCY WORK CALL OUT	EACH	21
Z0052000	REPAIR STEEL PLATE BEAM GUARDRAIL, TYPE A	FOOT	600
Z0052410	REPAIR TRAFFIC BARRIER TERMINAL, TYPE 1 SPECIAL (TANGENT)	EACH	37
Z0052415	REPAIR TRAFFIC BARRIER TERMINAL, TYPE 1 SPECIAL (FLARED)	EACH	1
Z0052600	REPAIR TRAFFIC BARRIER TERMINAL, TYPE 2	EACH	1
Z0053000	REPAIR TRAFFIC BARRIER TERMINAL, TYPE 5	EACH	1
Z0053200	REPAIR TRAFFIC BARRIER TERMINAL, TYPE 6	EACH	1
X0325231	CABLE GUARD MARKER	EACH	250
X0325899	REPAIR HIGH TENSION CABLE (GIBRALTAR)	FOOT	700
X0325900	REPAIR HIGH TENSION BARRIER TERMINAL (GIBRALTAR)	EACH	3
X0325901	REPAIR POSTS (GIBRALTAR)	EACH	115

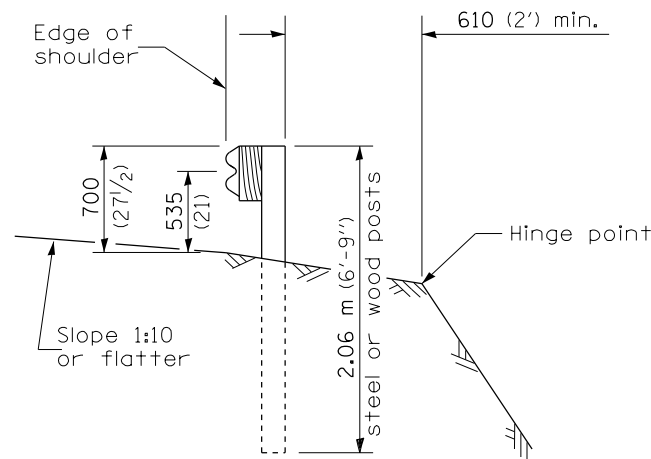
2/15/14

CODE	ITEM	UNIT	CONSTRUCTION CODE
			100% STATE
			6-00481-0000
			ROADWAY
			0021
X0325902	REMOVE AND REPLACE POSTS ( GIBRALTAR)	EACH	100
X0327490	REPAIR HIGH TENSION CABLE ( NU-CABLE)	FOOT	125
X0327491	REPAIR POSTS ( NU-CABLE)	EACH	50
X0327492	REMOVE AND REPLACE POSTS ( NU-CABLE)	EACH	65
X0327493	REPAIR HIGH TENSION BARRIER TERMINAL ( NU-CABLE)	EACH	3
X6431220	REMOVE AND REPLACE IMPACT ATTENUATOR SAND MODULE	EACH	20
X7011834	TRAFFIC CONTROL AND PROTECTION, CALL OUT WORK	EACH	15
X7011836	TRAFFIC CONTROL AND PROTECTION, FREEWAY/EXPRESSWAY, CALL OUT WORK	EACH	30

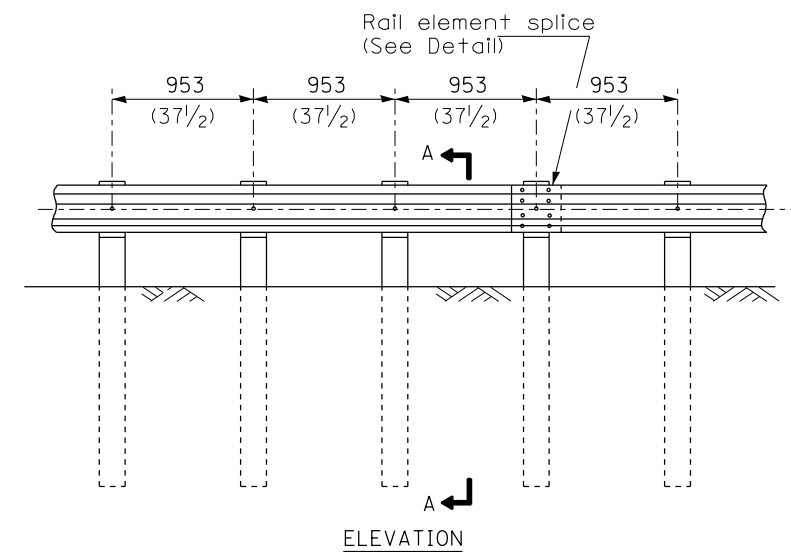


**TYPE A**

1.905 m (6'-3") Typical post spacing

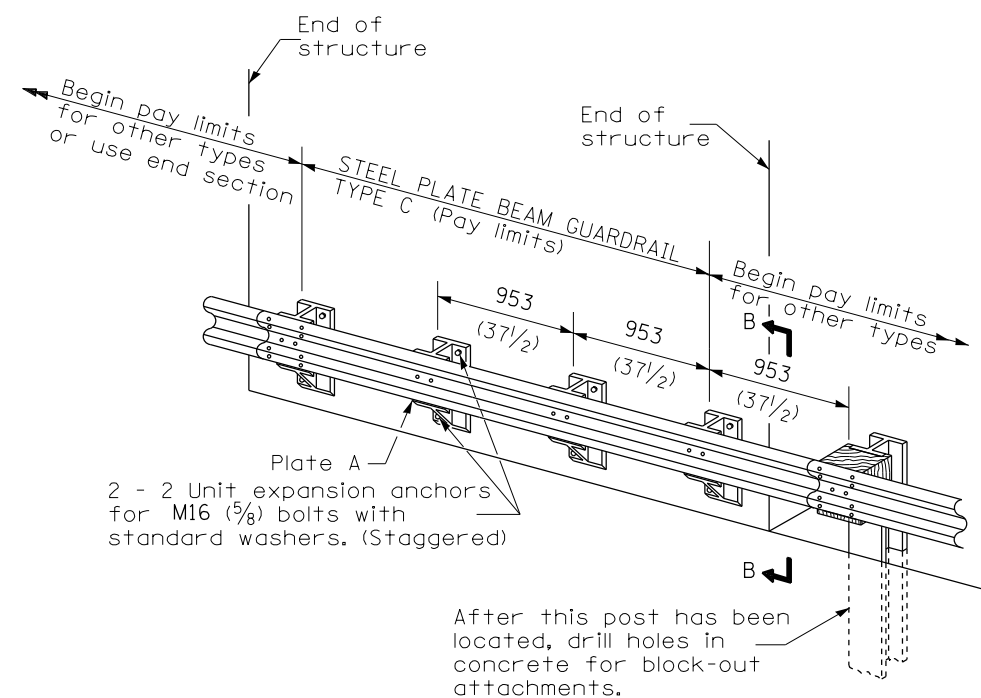


**SECTION A-A**



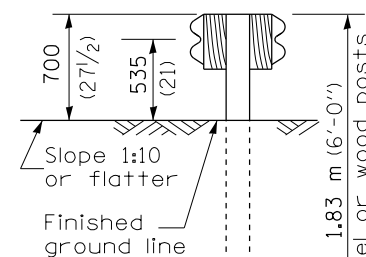
**TYPE B**

953 (37 1/2) Closed post spacing

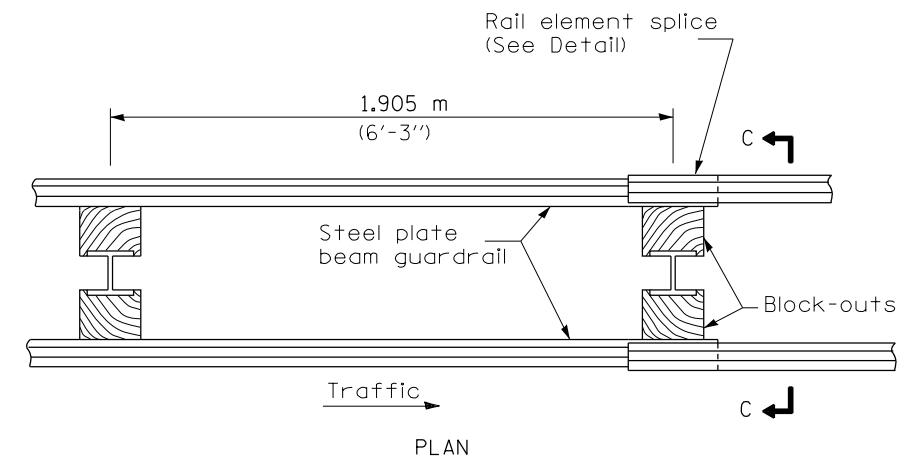


**TYPE C**

953 (37 1/2) Block-out spacing

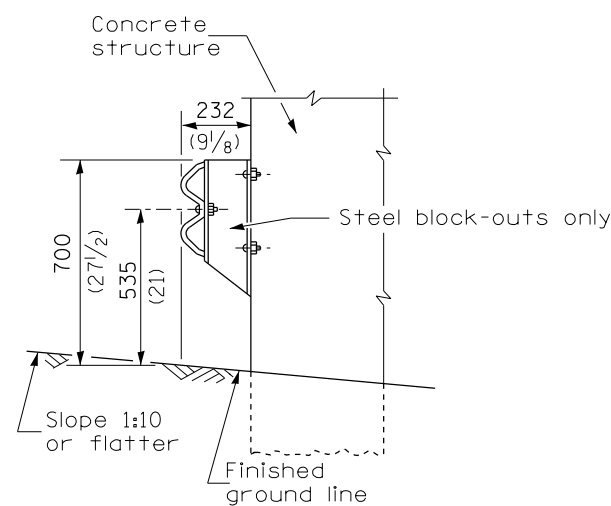


**SECTION C-C**



**TYPE D**

Double steel plate beam guardrail  
1.905 m (6'-3") typical post spacing



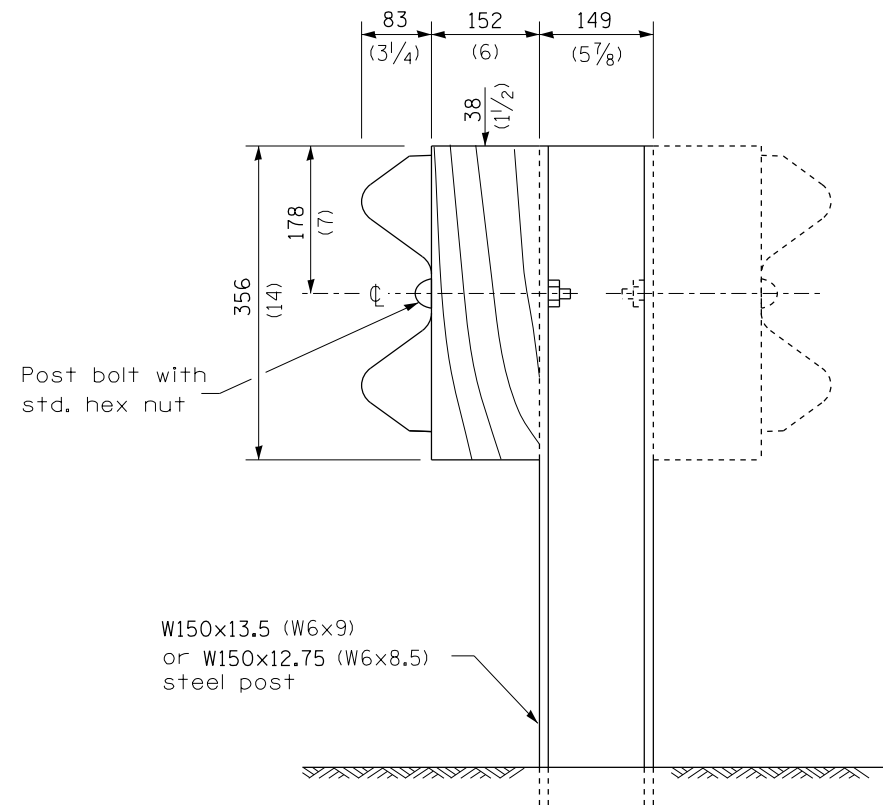
**SECTION B-B**

**GENERAL NOTES**

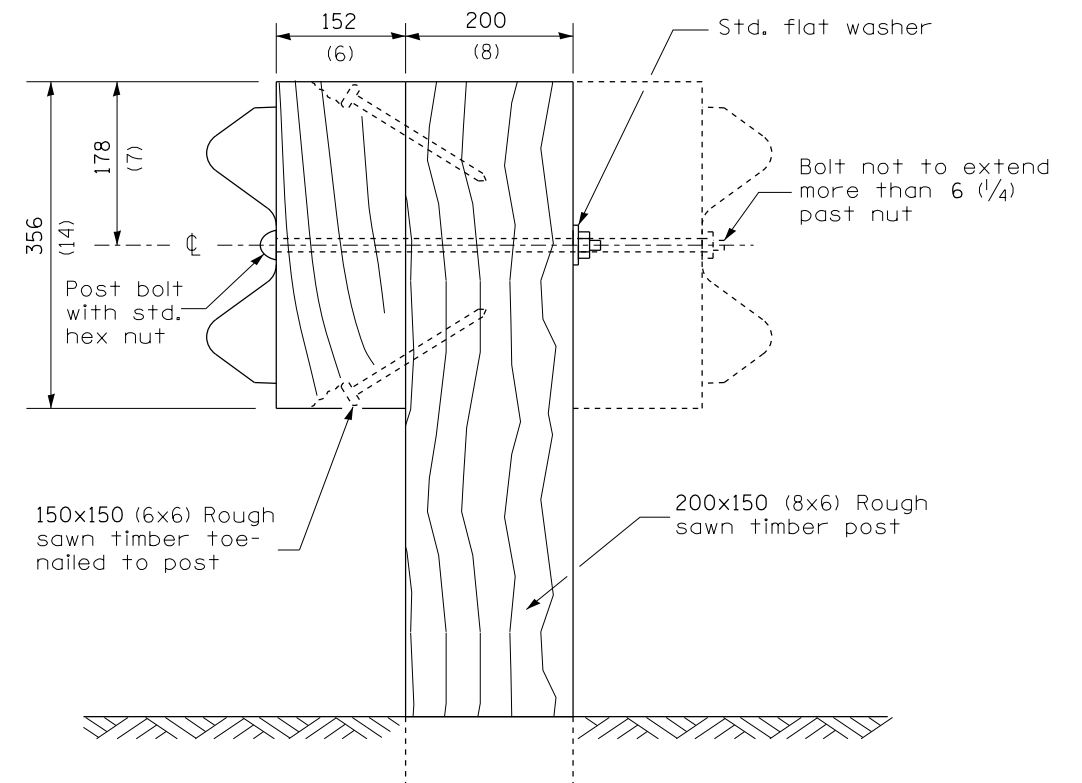
All slope ratios are expressed as units of vertical displacement to units of horizontal displacement (V:H).

All dimensions are in millimeters (inches) unless otherwise shown.

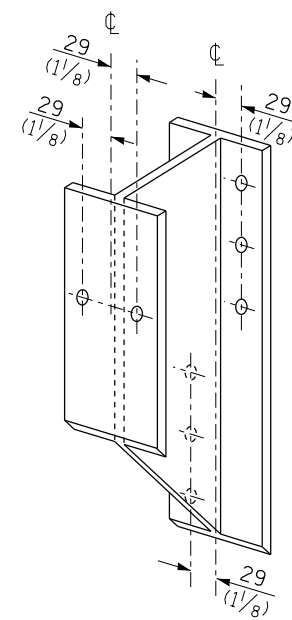
FILE NAME =	USER NAME = sparksgw	DESIGNED -	REVISED -	<b>STATE OF ILLINOIS DEPARTMENT OF TRANSPORTATION</b>	<b>PRE-MGS HIGHWAY STANDARD 630001-06 STEEL PLATE BEAM GUARDRAIL EFFECTIVE 4-1-06</b>	F.A. RTE.	SECTION	COUNTY	TOTAL SHEETS	SHEET NO.	
pw:\IL\084EBIDINTEG\illinois.gov\PIWIDOT\Documents\DOT Offices\District 6\Projects\0672446\Drawings\630001-06\PlateBeamGrdrail.dgn	PLOT SCALE = 26.0000' / in.	CHECKED -	REVISED -			•VAR	••	••	17	6	
Default	PLOT DATE = 10/23/2014	DATE -	REVISED -			(SHEET 1 OF 4)		CONTRACT NO. 72H46		ILLINOIS FED. AID PROJECT	
						SCALE:	SHEET	OF	SHEETS	STA.	TO



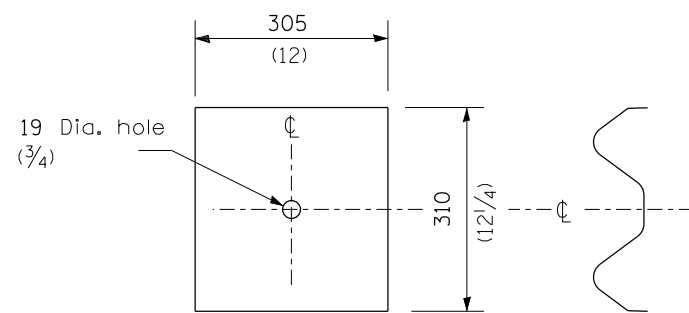
**STEEL POST CONSTRUCTION**



**WOOD POST CONSTRUCTION**



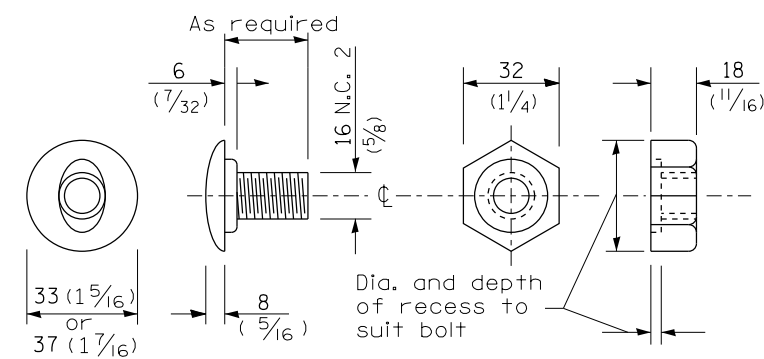
**STEEL BLOCK-OUT DETAIL**



NOTE

Plate A shall be placed between rail element and block-out at non-splice mounting points only when steel block-outs are used.

**PLATE A**



**POST OR SPLICE BOLT & NUT**

FILE NAME =	USER NAME = sparksqw	DESIGNED -	REVISED -
p:\11\084EBIDINTEG.illinois.gov\PI\DOT\Documents\DOT Offices\District 6\Projects\0672\Drawings\EA0\Sheets\0672H46-sht-63000-PlateBeamGrd.dgn		DRAWN -	REVISED -
Default	PLOT SCALE = 26.0000' / in.	CHECKED -	REVISED -
	PLOT DATE = 10/23/2014	DATE -	REVISED -

**STATE OF ILLINOIS  
DEPARTMENT OF TRANSPORTATION**

**PRE-MGS HIGHWAY STANDARD 630001-06  
STEEL PLATE BEAM GUARDRAIL  
EFFECTIVE 4-1-06**

(SHEET 2 OF 4)

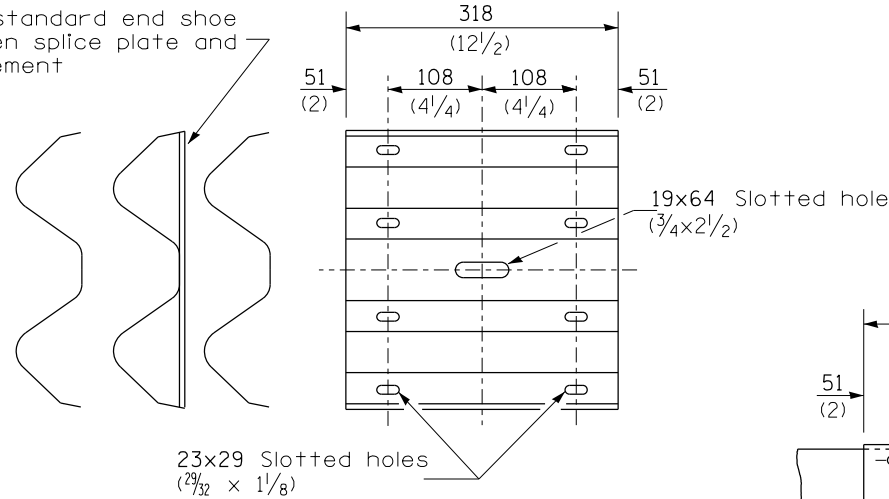
F.A. RTE.	SECTION	COUNTY	TOTAL SHEETS	SHEET NO.
•VAR	•••	••	17	7
ILLINOIS FED. AID PROJECT			CONTRACT NO. 72H46	

SCALE: SHEET OF SHEETS STA. TO STA.

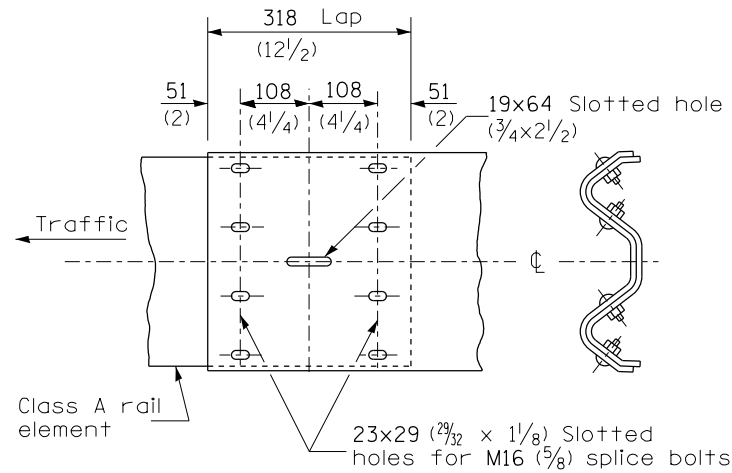
•• D6 CABLE/GUARDRAIL 2015-1

•• VAR

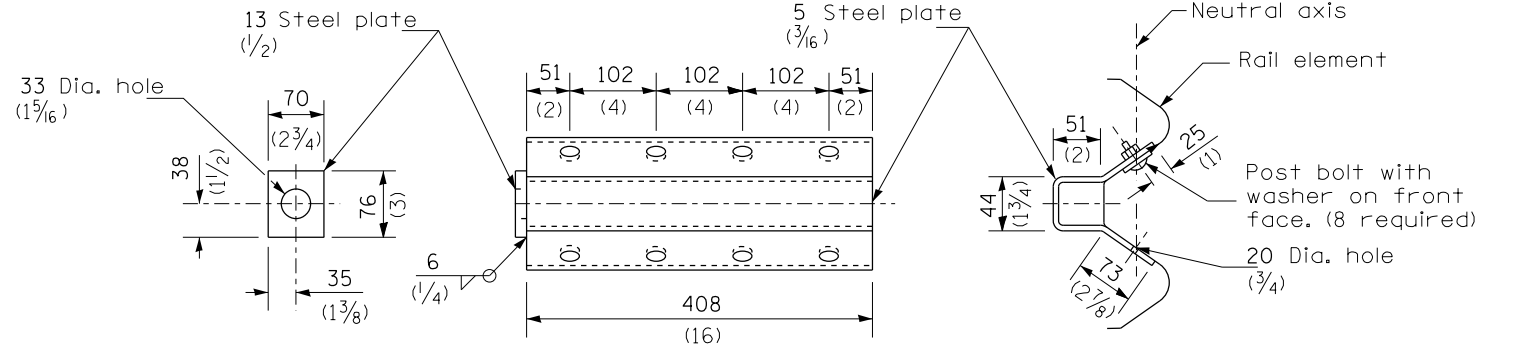
Place standard end shoe between splice plate and rail element



**SPLICE PLATE**

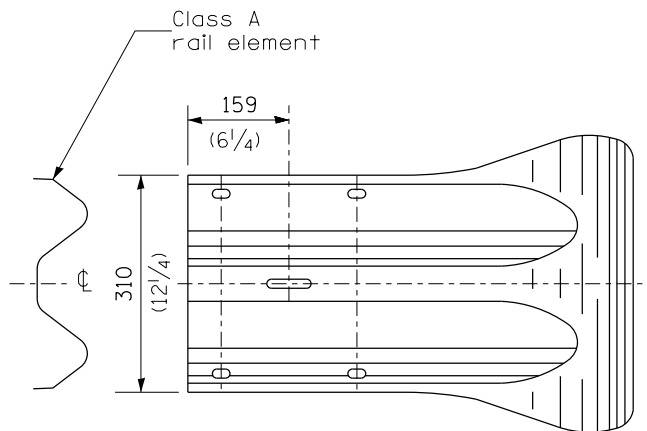
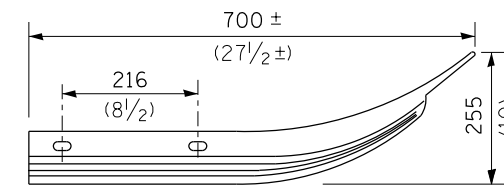


**RAIL ELEMENT SPLICE**

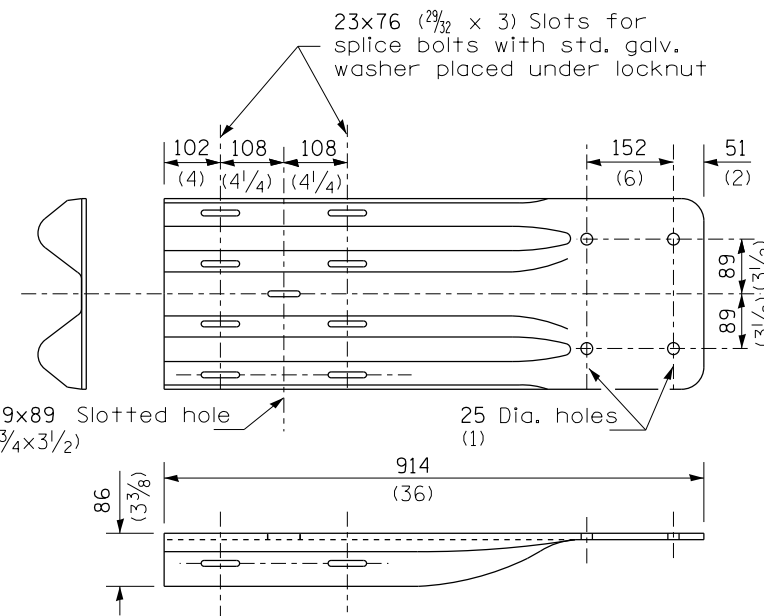


**NOTE**  
Anchor plate T shall be used to attach cable assembly to guardrail when required on traffic barrier terminals.

**ANCHOR PLATE T DETAILS**



**END SECTION**

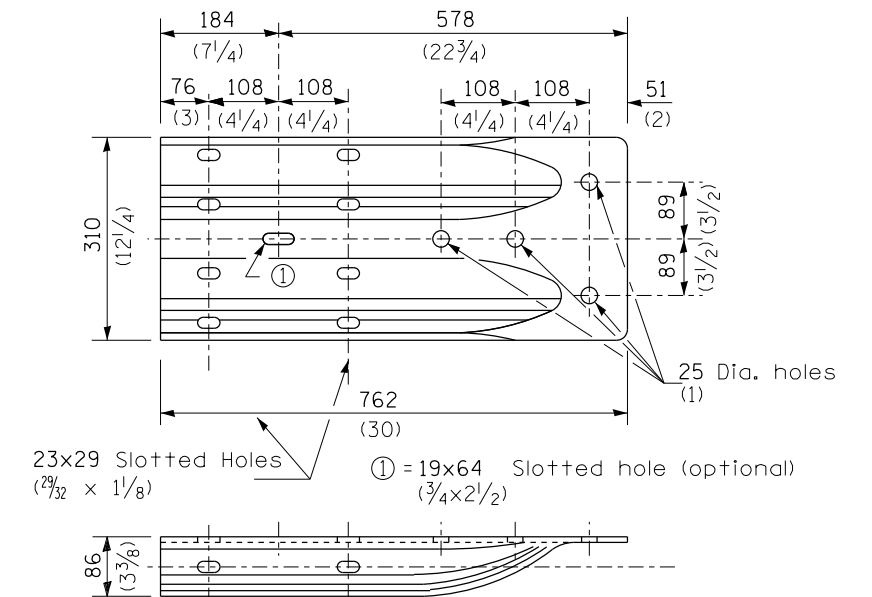


**NOTE**  
When end shoe is attached to a bridge parapet which has an expansion joint, the bolts shall be provided with a locknut or double nut and shall be tightened only to a point that will allow guardrail movement.

The standard end shoe shall be attached to the concrete with pre-drilled or self-drilling anchor bolts. The anchor cone shall be set flush with the surface of the concrete.

Externally threaded studs protruding from the surface of the concrete will not be permitted.

**END SHOE**

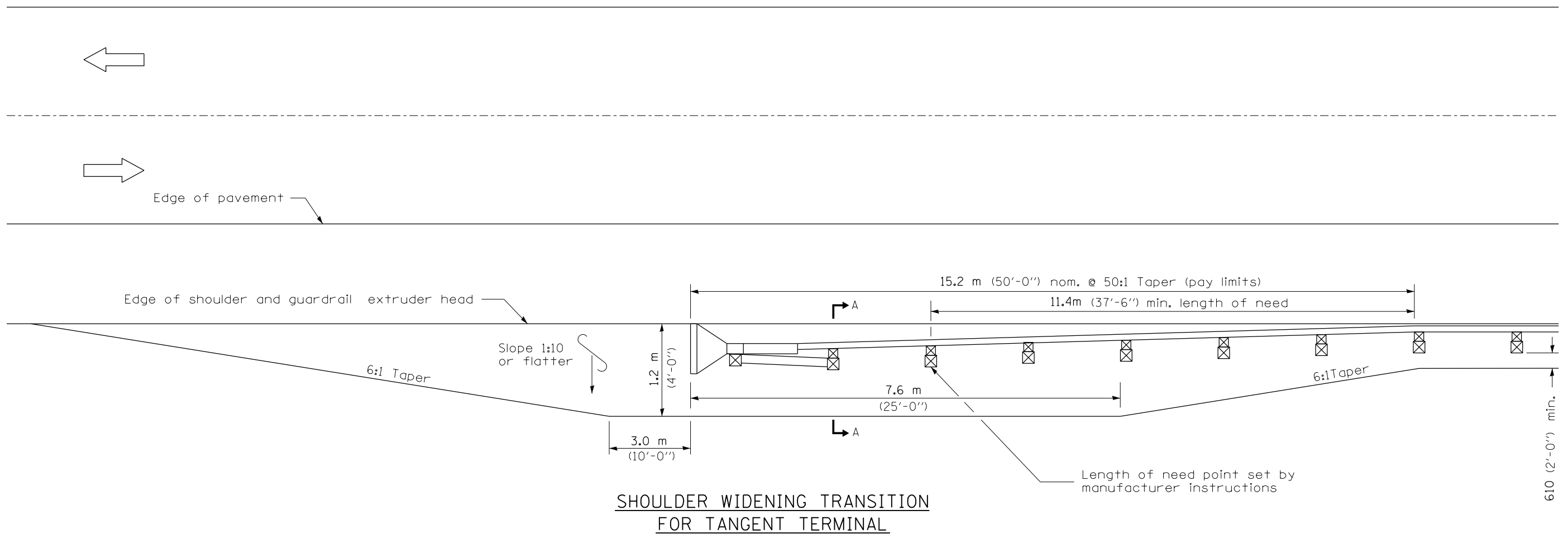


**ALTERNATE END SHOE**

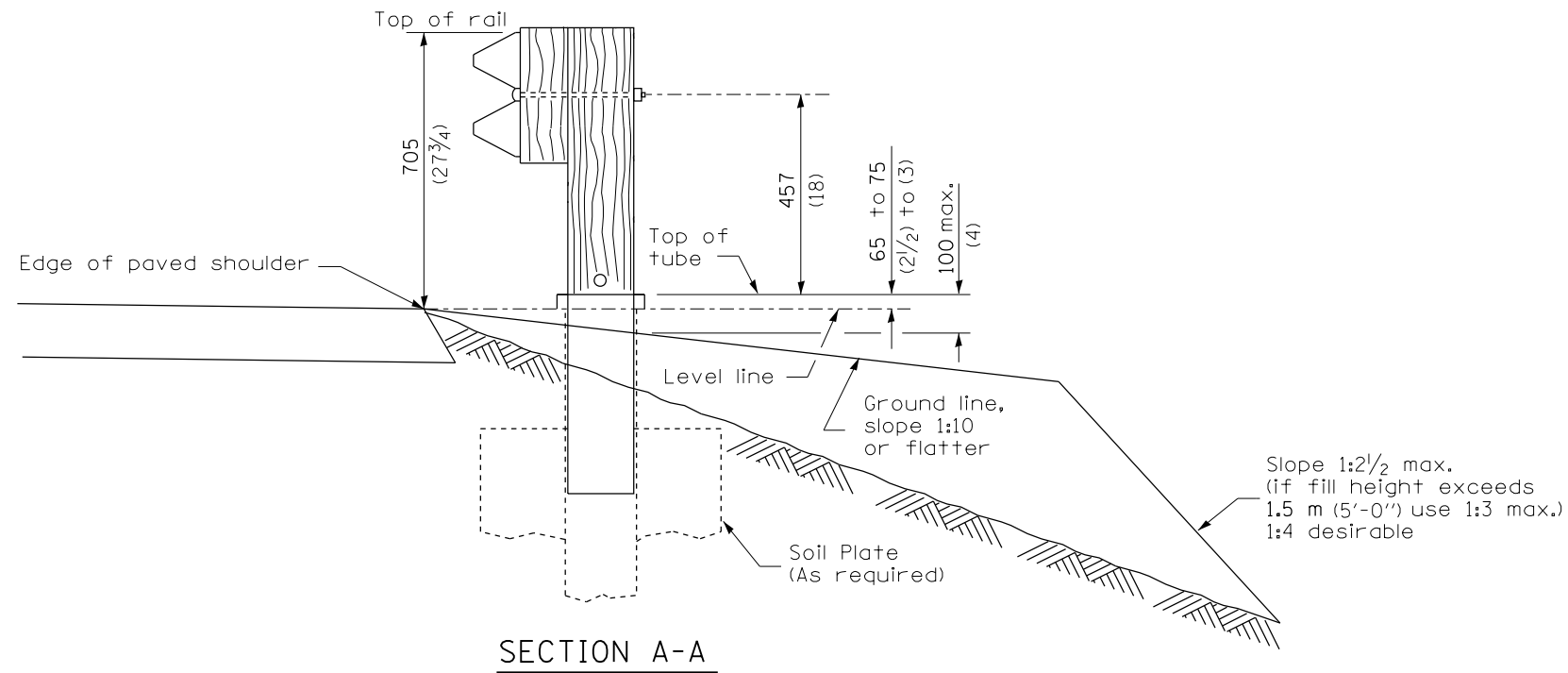
FILE NAME =	USER NAME = sparksgw	DESIGNED -	REVISED -	<b>STATE OF ILLINOIS DEPARTMENT OF TRANSPORTATION</b>	<b>PRE-MGS HIGHWAY STANDARD 630001-06 STEEL PLATE BEAM GUARDRAIL EFFECTIVE 4-1-06</b>			F.A. RE.	SECTION	COUNTY	TOTAL SHEETS	SHEET NO.
pw:\IL\084EBIDINTEG.illinois.gov\PIDOT\Documents\DOT Offices\District 6\Projects\0672\Drawings\60\Sheets\0672H46-sht-630001-PlateBeamGrdrail.dgn		CHECKED -	REVISED -		•VAR	••	••	17	8			
PLOT SCALE = 26.0000' / in.		DATE -	REVISED -		(SHEET 3 OF 4)			CONTRACT NO. 72H46				
Default	PLOT DATE = 10/23/2014				SCALE: SHEET OF SHEETS STA. TO STA.			ILLINOIS FED. AID PROJECT				







**SHOULDER WIDENING TRANSITION  
FOR TANGENT TERMINAL**

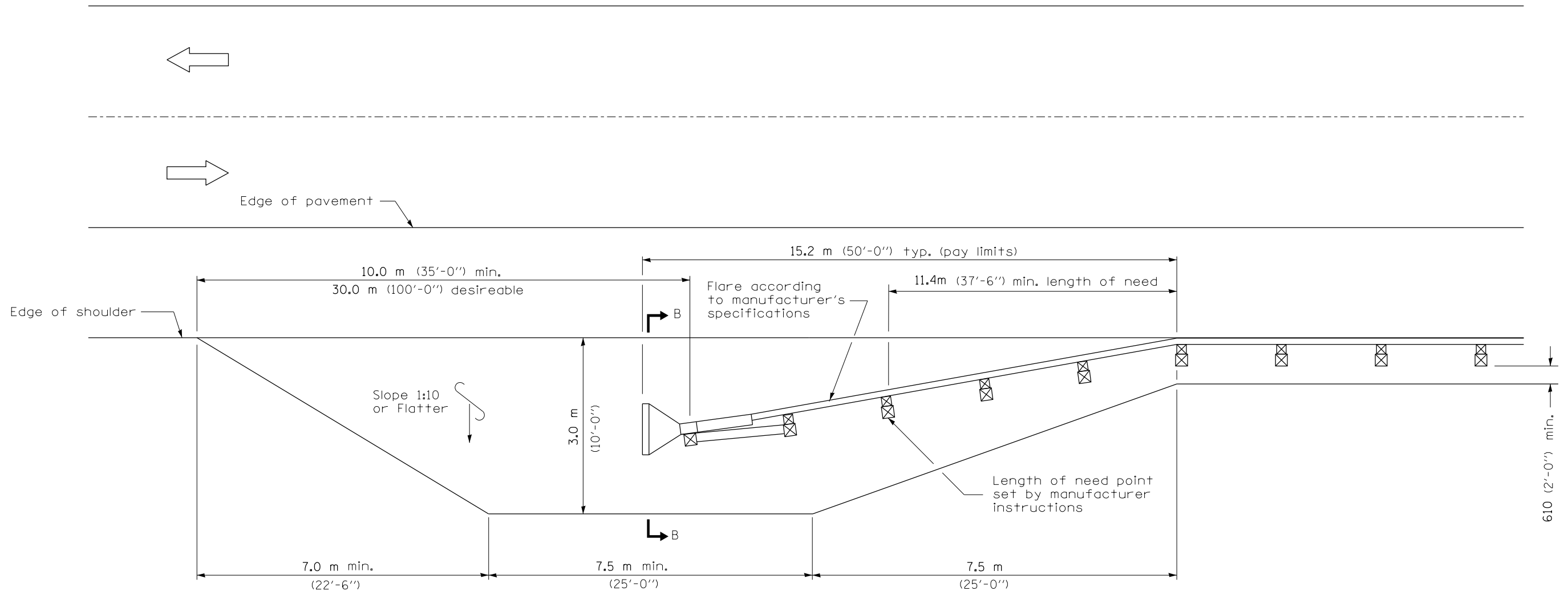


**SECTION A-A**

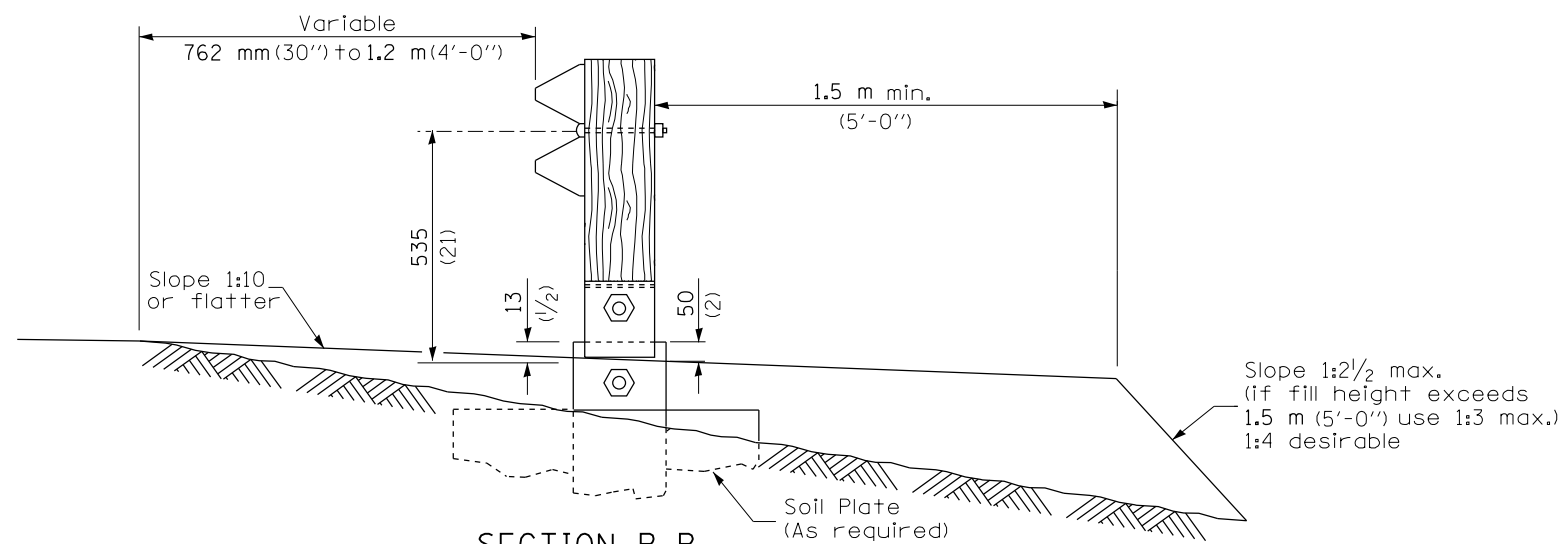
**GENERAL NOTES**

- 50:1 Taper required so the guardrail head will not encroach on the shoulder.
- All slope ratios are expressed as units of vertical displacement to units of horizontal displacement (V:H).
- All dimensions are in millimeters (inches) unless otherwise shown.

FILE NAME =	USER NAME = sparksgw	DESIGNED -	REVISED -	<b>STATE OF ILLINOIS DEPARTMENT OF TRANSPORTATION</b>	<b>PRE-MGS HIGHWAY STANDARD 630301-03 SHOULDER WID. FOR TYPE 1 (SPL) GUARDRAIL TERMINAL EFFECTIVE 4-1-06</b>				F.A. RTE.	SECTION	COUNTY	TOTAL SHEETS	SHEET NO.
pw:\IL\084EBIDINTEG\illinois.gov\PIDOT\Documents\IDOT Offices\District 6\Projects\0672\Drawings\EA0\Sheets\0672H46-Pre-MGS Highway Standard-630301-03.dgn		DRAWN -	REVISED -		•VAR	•••	••	17	10				
Default	PLOT SCALE = 26.0000' / in.	CHECKED -	REVISED -		(SHEET 1 OF 2)				CONTRACT NO. 72H46				
	PLOT DATE = 10/23/2014	DATE -	REVISED -		SCALE:	SHEET	OF	SHEETS	STA.	TO	STA.	ILLINOIS FED. AID PROJECT	•• VARIOUS

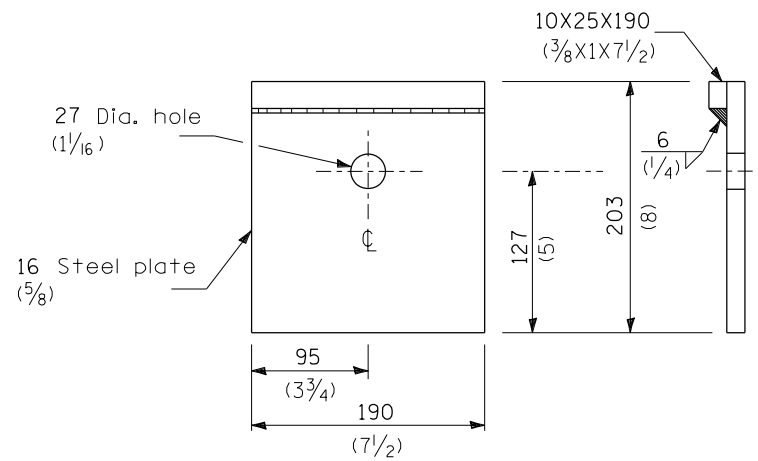


**SHOULDER WIDENING TRANSITION  
FOR FLARED TERMINAL**

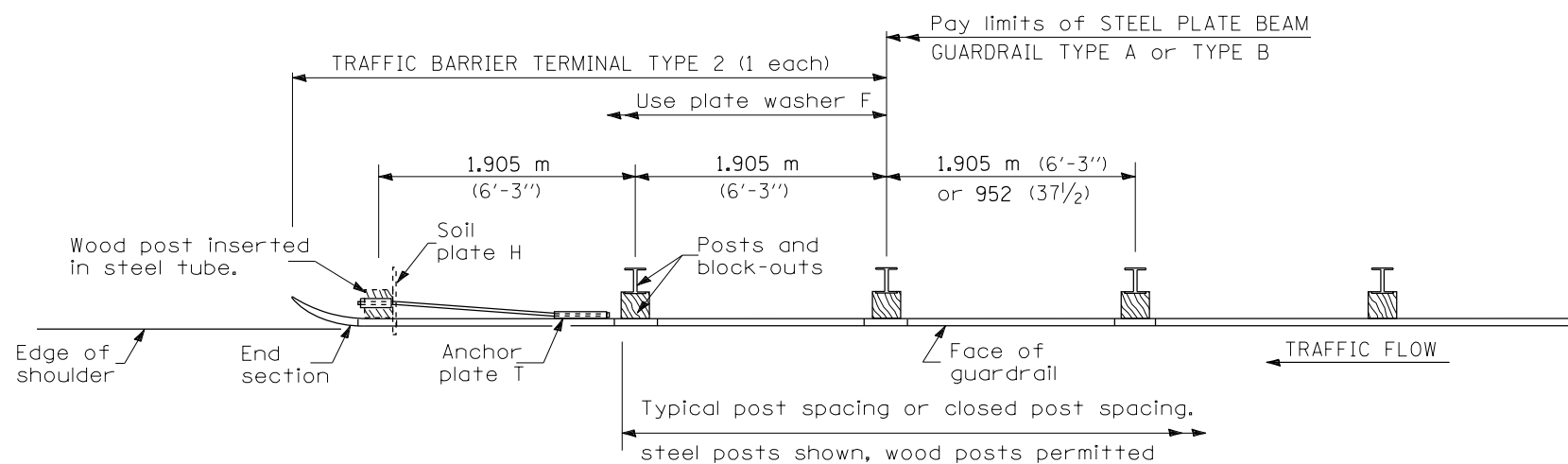


**SECTION B-B**  
(End section omitted for clarity.)

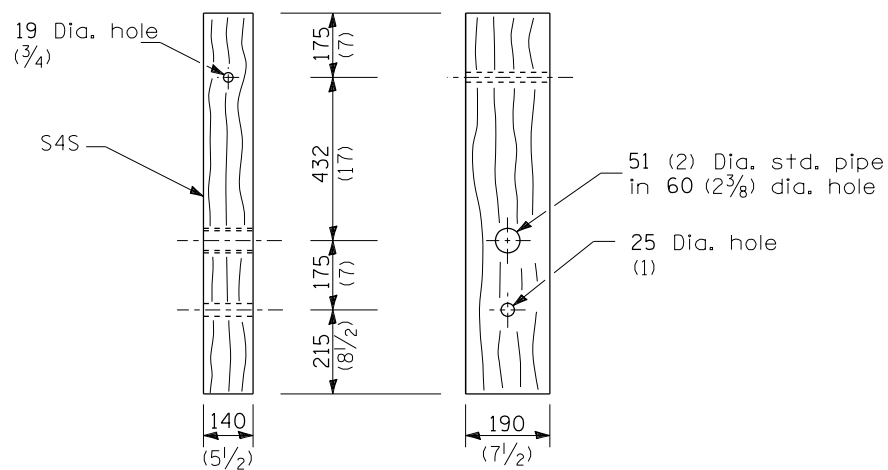
FILE NAME =	USER NAME = sparksgw	DESIGNED -	REVISED -	<b>STATE OF ILLINOIS DEPARTMENT OF TRANSPORTATION</b>	<b>PRE-MGS HIGHWAY STANDARD 630301-03 SHOULDER WID. FOR TYPE 1 (SPL) GUARDRAIL TERMINAL EFFECTIVE 4-1-06</b> (SHEET 2 OF 2)	F.A. RTE.	SECTION	COUNTY	TOTAL SHEETS	SHEET NO.	
pw:\IL\084EBIDINTEG.illinois.gov\PI\DOT\Documents\DOT Offices\District 6\Projects\0672\Drawings\EA\Drawings\630301-03.dgn	PLLOT SCALE = 26.0000' / in.	CHECKED -	REVISED -			•VAR	••	••	17	11	
Default	PLOT DATE = 10/23/2014	DATE -	REVISED -			CONTRACT NO. 72H46		ILLINOIS FED. AID PROJECT			
						SCALE:	SHEET	OF	SHEETS	STA.	TO



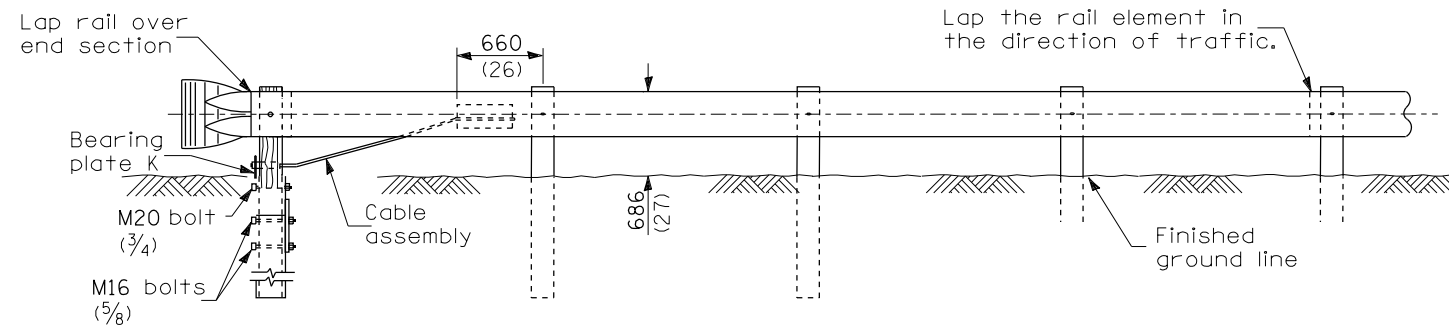
**BEARING PLATE K**



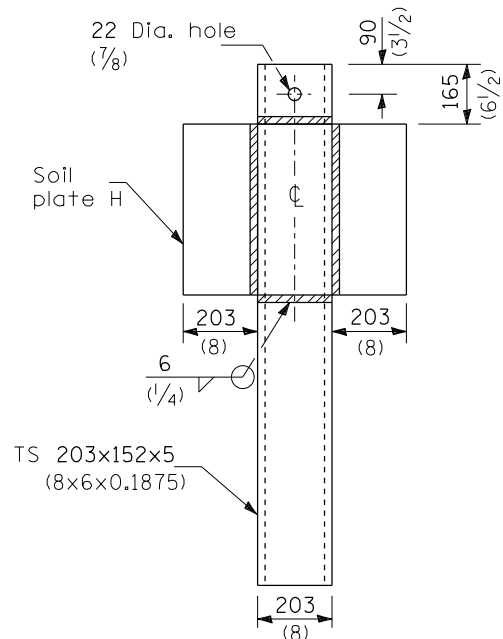
**PLAN**



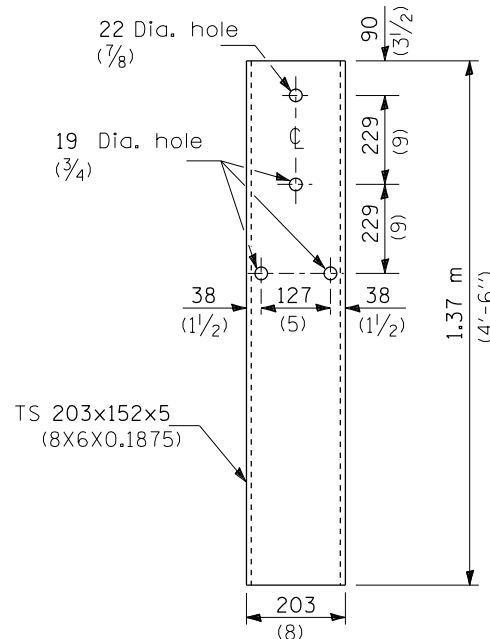
**WOOD POST**



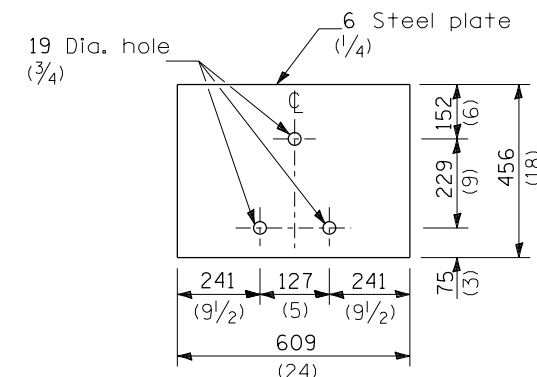
**ELEVATION**



**ALTERNATE SOIL PLATE CONNECTION**



**STEEL TUBE**



**SOIL PLATE H**

**GENERAL NOTES**

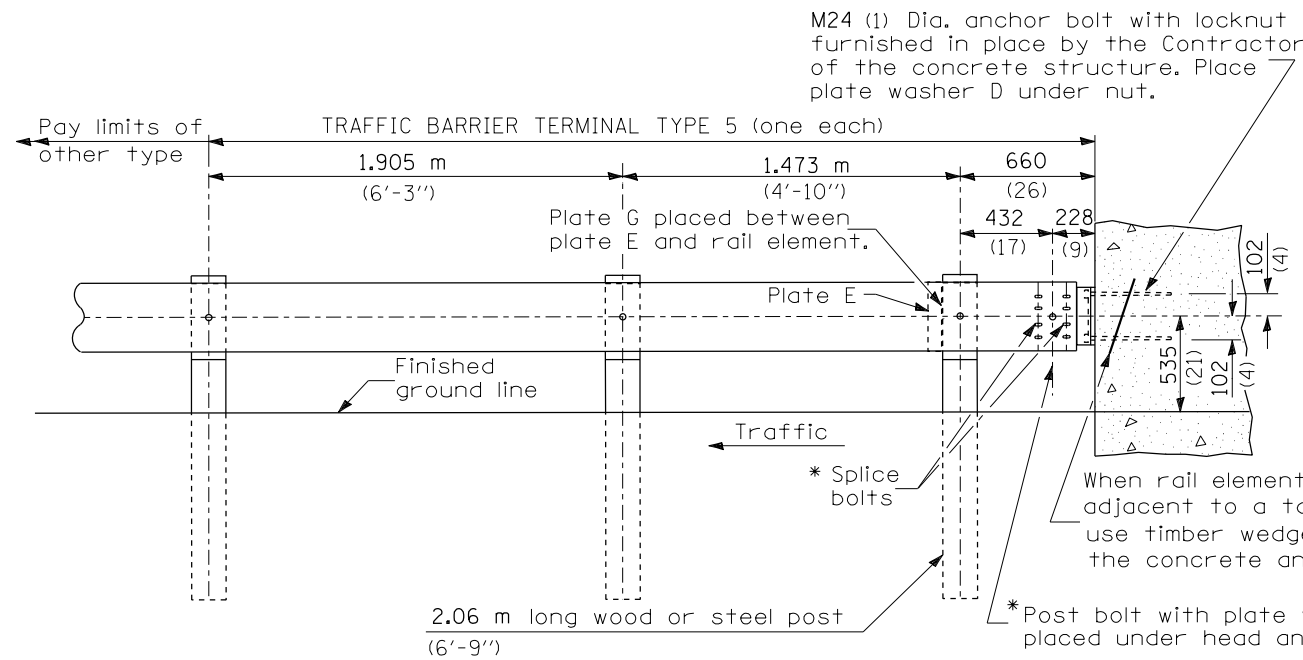
See Standard 630001 for details of guardrail not shown.

Use plate washer F at all posts.

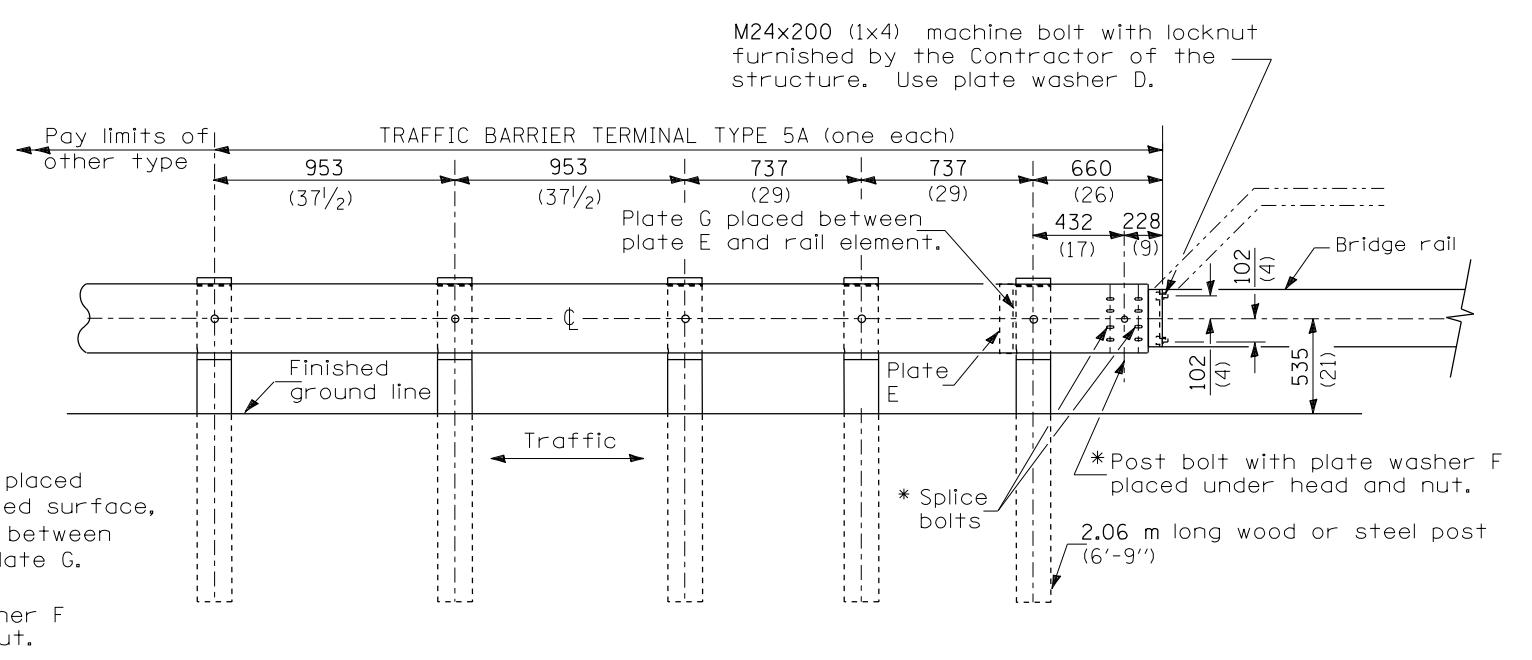
The bearing plate K shall be held in position by (2) two eight penny nails driven into the post and bent over the top of the plate.

All dimensions are in millimeters (inches) unless otherwise shown.

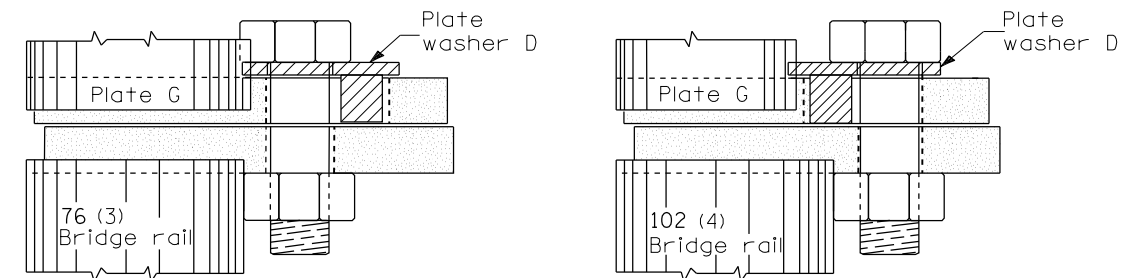
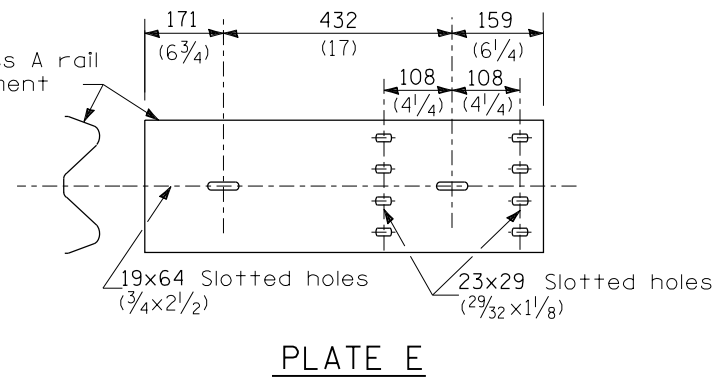
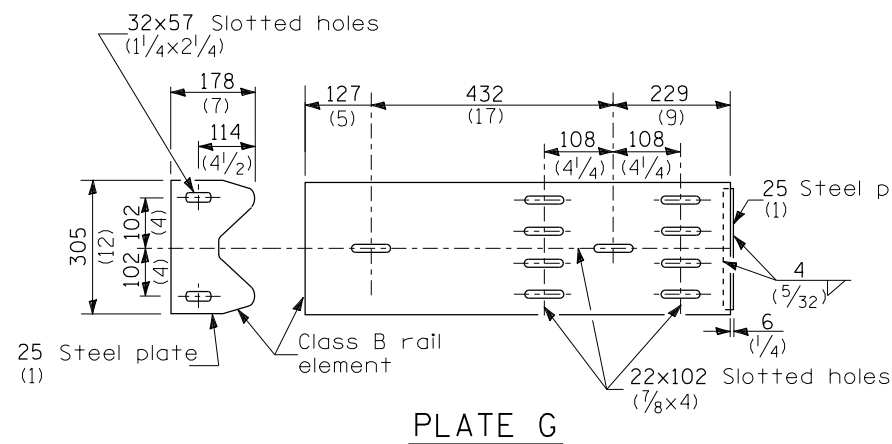
FILE NAME =	USER NAME = sparksgw	DESIGNED -	REVISED -	<b>STATE OF ILLINOIS DEPARTMENT OF TRANSPORTATION</b>	<b>PRE-MGS HIGHWAY STANDARD 631011-02 TRAFFIC BARRIER TERMINAL TYPE 2 EFFECTIVE 4-1-06</b>	F.A. RTE.	SECTION	COUNTY	TOTAL SHEETS	SHEET NO.	
pw:\IL\084EBIDINTEG.illinois.gov\PI\DOT\Documents\DOT Offices\District 6\Projects\0672\Drawings\60\Sheets\6072H46.Pre-MGS Highway Standard 631011-02.dgn	PLotted SCALE = 26.0000' / in.	CHECKED -	REVISED -			•••	••	••	17	12	
Default	PLOT DATE = 10/23/2014	DATE -	REVISED -			CONTRACT NO. 72H46		ILLINOIS FED. AID PROJECT			
						SCALE:	SHEET OF SHEETS	STA. TO STA.	ILLINOIS FED. AID PROJECT		



TYPE 5 - CONCRETE BRIDGE PARAPET



TYPE 5A - STEEL BRIDGE RAIL



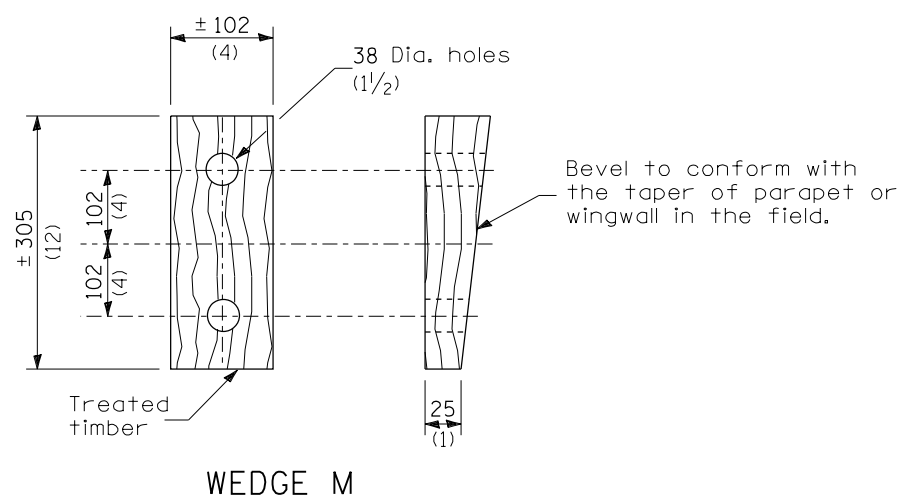
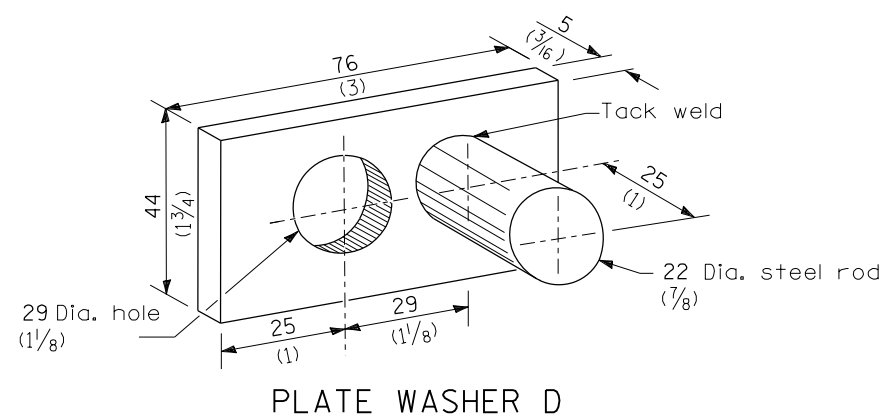
GENERAL NOTES

Install plate washer D so that the 25 mm (1") projection fills the remainder of the slotted holes in the 25 mm (1") end plate on plate G after the M24 (1") dia. bolts are in place.

\* Bolts shall be provided with locknut or double nut and shall be tightened only to a point that will allow plate G to be free to move when an expansion joint exists below the connector.

See Standard 630001 for details of guardrail not shown.

All dimensions are in millimeters (inches) unless otherwise shown.

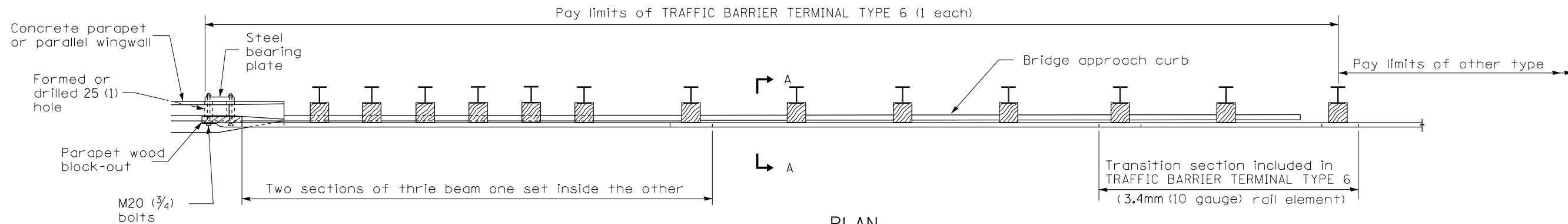


FILE NAME =	USER NAME = sparksgw	DESIGNED -	REVISED -
p:\11084EBIDINTEG\Illinois.gov\PI\DOT\Documents\DOT Offices\District 6\Projects\0672\Drawings\60\Sheets\0672H46-Pre-MGS Highway Standard 631026-02.dgn		DRAWN -	REVISED -
		CHECKED -	REVISED -
Default	PLOT DATE = 10/23/2014	DATE -	REVISED -

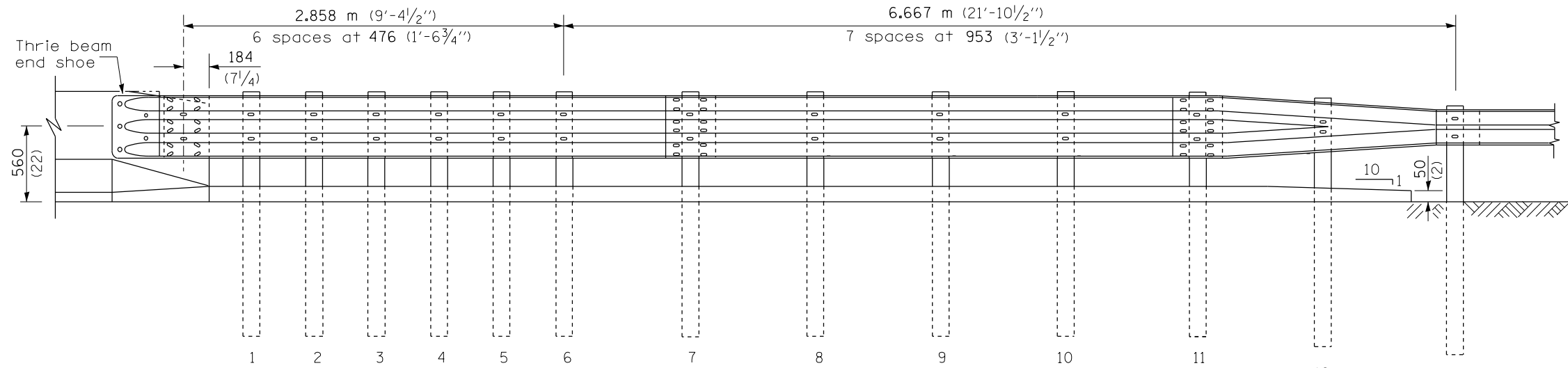
STATE OF ILLINOIS  
DEPARTMENT OF TRANSPORTATION

PRE-MGS HIGHWAY STANDARD 631026-02			
TRAFFIC BARRIER TERMINAL TYPE 5 & 5A			
EFFECTIVE 4-1-2006			
SCALE:	SHEET	OF SHEETS	STA. TO STA.

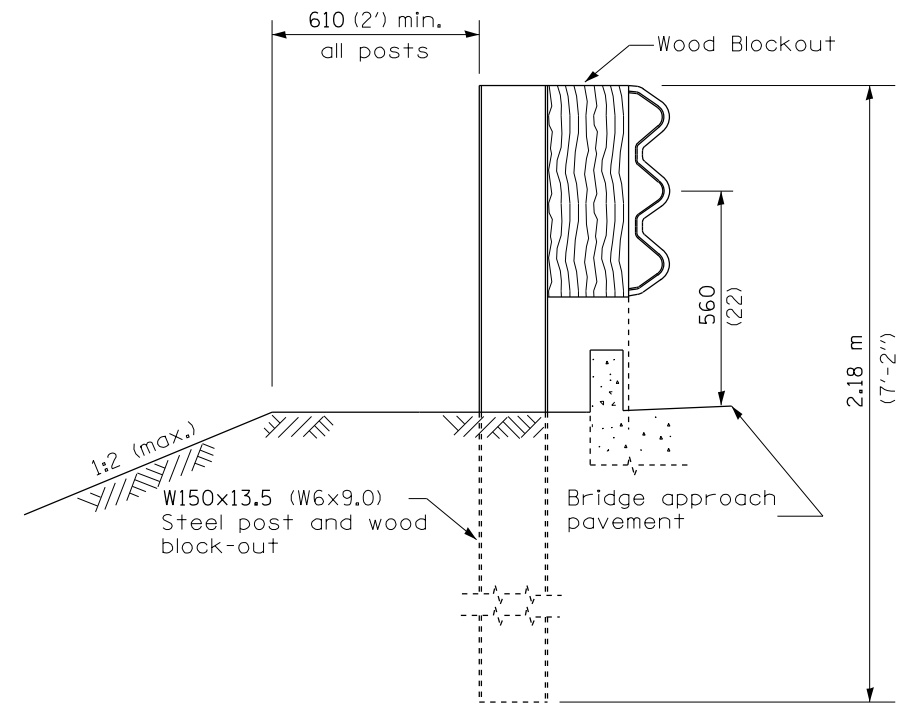
F.A. RTE.	SECTION	COUNTY	TOTAL SHEETS	SHEET NO.
•••	•••	••	17	13
CONTRACT NO. 72H46			ILLINOIS FED. AID PROJECT	



PLAN



ELEVATION



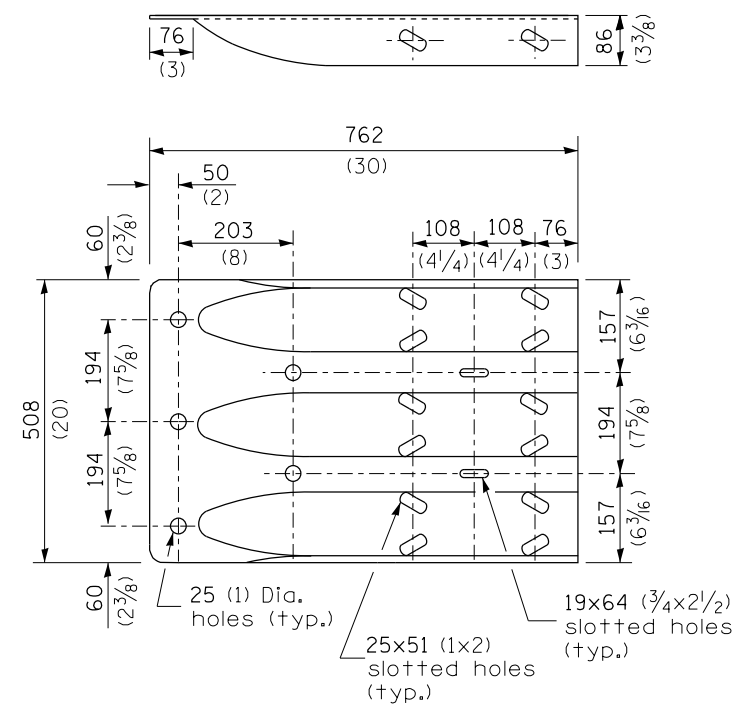
SECTION A-A

GENERAL NOTES

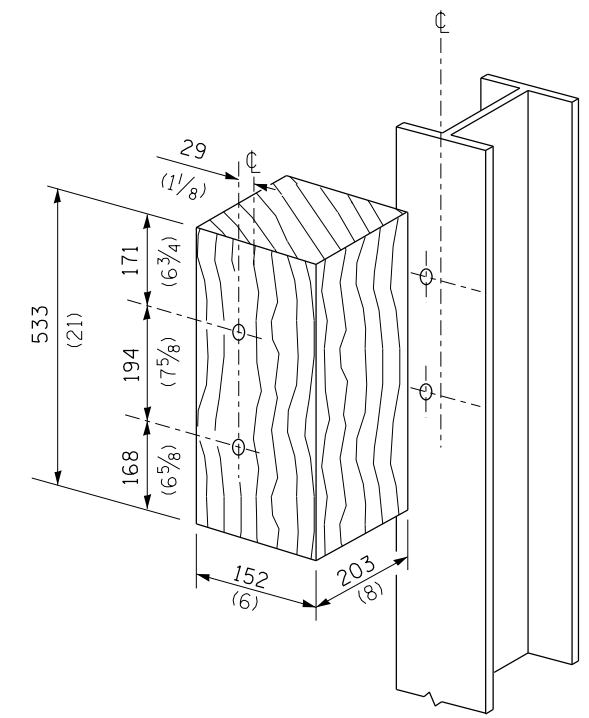
- See Standard 630001 for details of guardrail not shown.
- Thrie beam rail shall be bolted to block-out at all posts.
- See Standard 420401 for details of bridge approach pavement.
- All slope ratios are expressed as units of vertical displacement to units of horizontal displacement (V:H).
- All dimensions are in millimeters (inches) unless otherwise shown.

FILE NAME =	USER NAME = sparksgw	DESIGNED -	REVISED -	<b>STATE OF ILLINOIS DEPARTMENT OF TRANSPORTATION</b>	<b>PRE-MGS HIGHWAY STANDARD 631031-05 TRAFFIC BARRIER TERMINAL, TYPE 6 EFFECTIVE 4-1-06</b>				F.A. RE.	SECTION	COUNTY	TOTAL SHEETS	SHEET NO.
pw:\IL\084EBIDINTEG\illinois.gov\PIWIDOT\Documents\DOT Offices\District 6\Projects\0672\Drawings\631031-05\631031-05.dgn		CHECKED -	REVISED -		SCALE:	SHEET	OF	SHEETS	STA.	TO	STA.	17	14
Default		DATE -	REVISED -						(SHEET 1 OF 3)		CONTRACT NO. 72H46		ILLINOIS FED. AID PROJECT

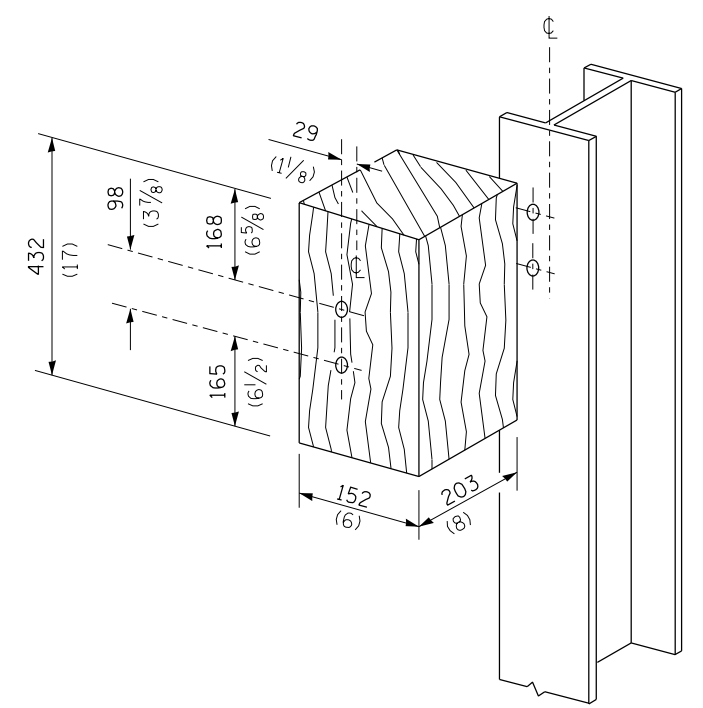




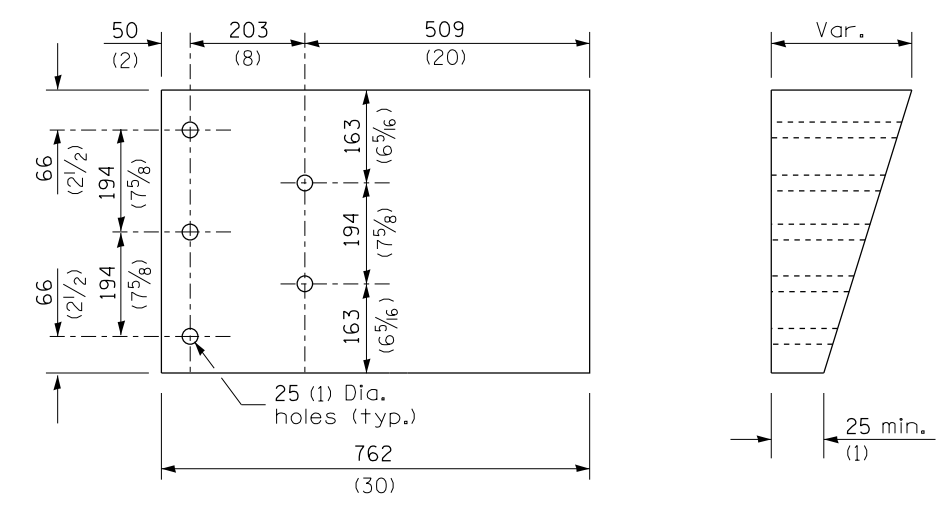
THRIE BEAM END SHOE DETAIL



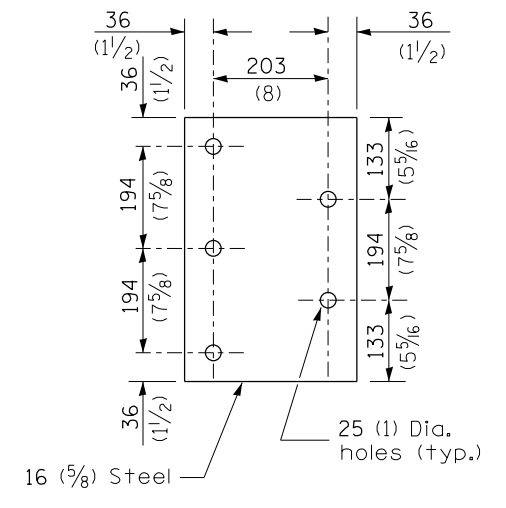
POSTS 1-11 WOOD BLOCKOUT DETAIL



POST 12 WOOD BLOCKOUT DETAIL



PARAPET WOOD BLOCK-OUT DETAIL



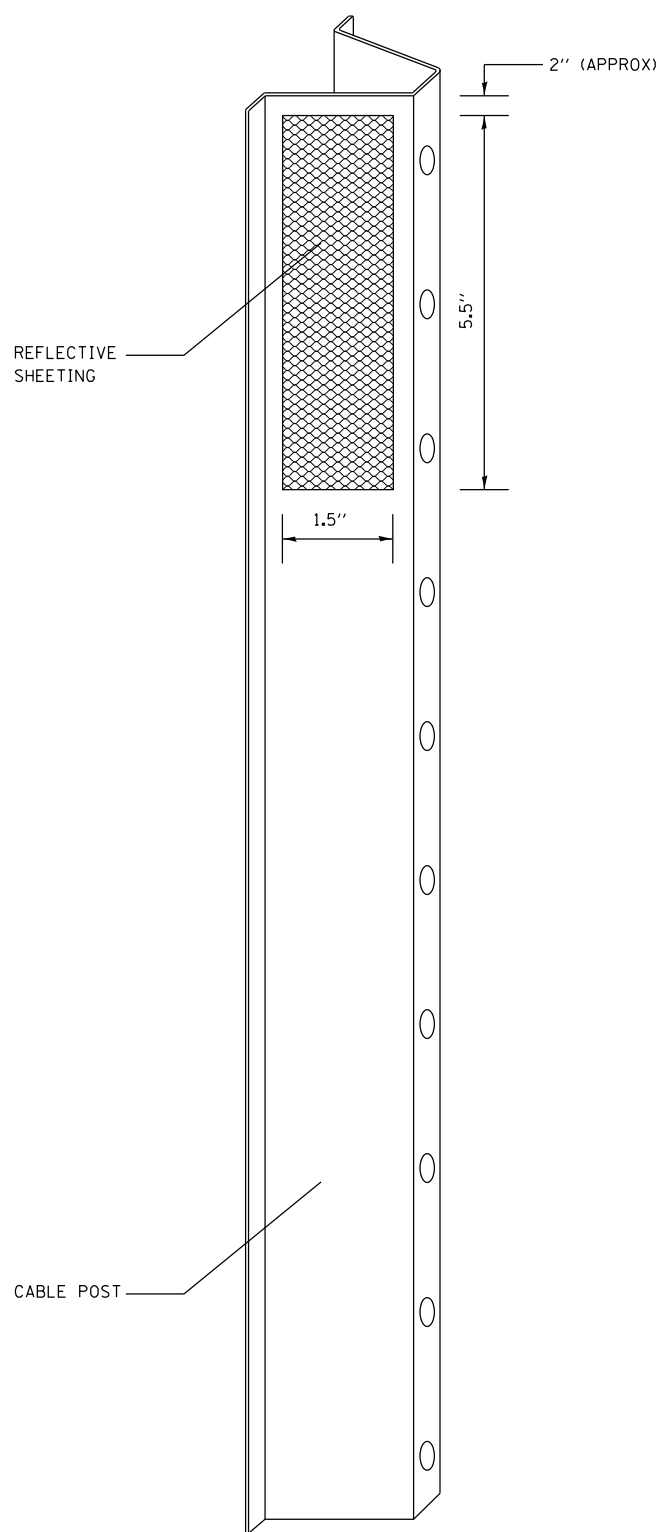
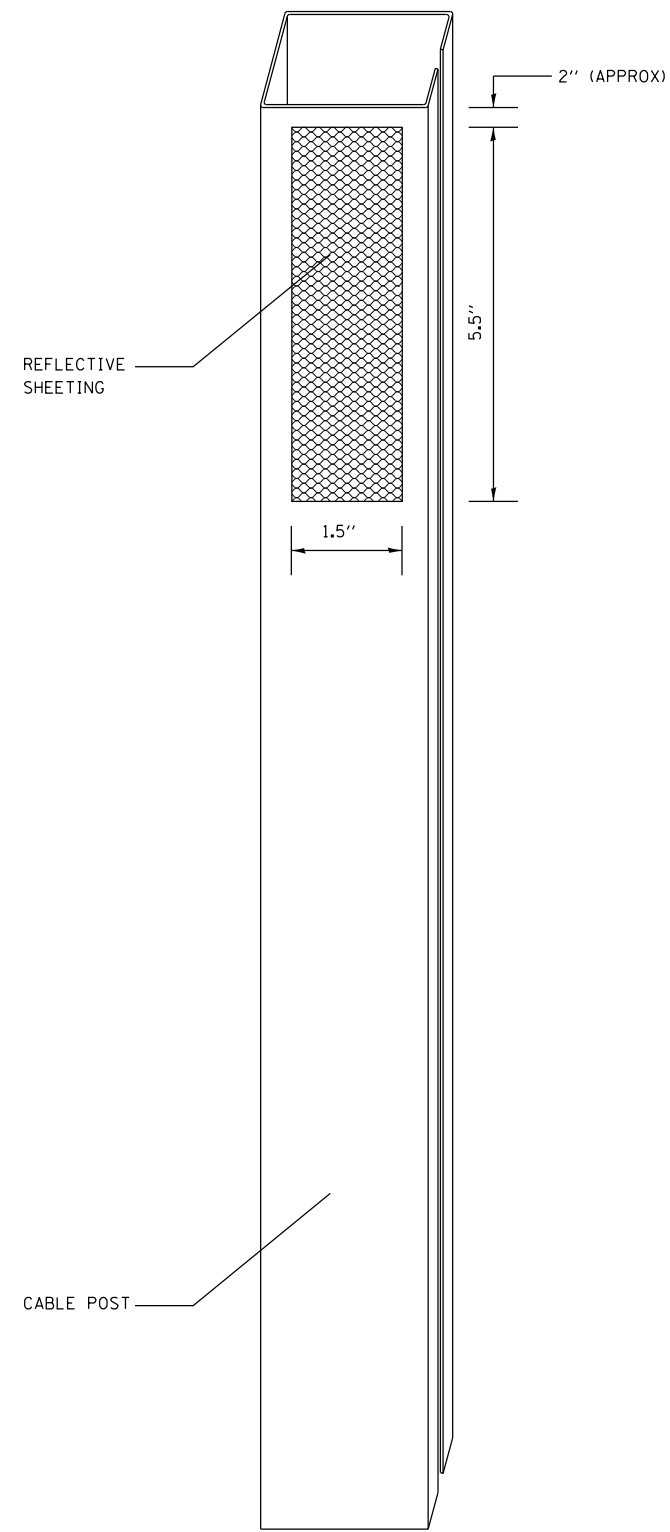
PARAPET STEEL BEARING PLATE DETAIL

(5 each individual 125x125x16 (5x5x5/8) steel plates with centered 25 (1)holes may be substituted for the plate shown.)

FILE NAME =	USER NAME = sparksgw	DESIGNED -	REVISED -	<b>STATE OF ILLINOIS DEPARTMENT OF TRANSPORTATION</b>	<b>PRE-MGS HIGHWAY STANDARD 631031-05 TRAFFIC BARRIER TERMINAL, TYPE 6 EFFECTIVE 4-1-06</b>			F.A. RTE.	SECTION	COUNTY	TOTAL SHEETS	SHEET NO.
pw:\IL\084EBIDINTEG.illinois.gov\PIWIDOT\Documents\DOT Offices\District 6\Projects\D672H46-Pre-MGS Highway Standard 631031-05.dgn	DRWN	CHECKED -	REVISED -		•VAR	••	••	17	16			
Default	PLOT SCALE = 26.0000' / in.	DATE -	REVISED -		(SHEET 3 OF 3)			CONTRACT NO. 72H46				

SCALE: SHEET OF SHEETS STA. TO STA. ILLINOIS FED. AID PROJECT \*\*\* D6 CABLE/GUARDRAIL 2015-1 \*\*\* VARIOUS





NOTES:

MATERIAL: THE MATERIAL SHALL BE IN ACCORDANCE WITH SECTION 1090 AND 1091 OF THE STANDARD SPECIFICATIONS.

CONSTRUCTION REQUIREMENTS: THE REFLECTIVE SHEETING SHALL BE INSTALLED DIRECTLY ON THE CABLE POSTS. THE REFLECTIVE SHEETING SHALL BE INSTALLED AS SHOWN IN THE PLANS, ON EVERY OTHER POST (IN ORDER TO PROVIDE A SPACING OF 40'). THE SURFACE OF THE POST SHALL BE CLEANED OF ALL CONTAMINANTS PRIOR TO THE INSTALLATION OF THE REFLECTIVE SHEETING. THE SURFACE SHALL BE CLEANED USING A 5-8 PERCENT PHOSPHORIC ACID SOLUTION AND RINSED WITH CLEAN WATER OR AS RECOMMENDED BY THE MANUFACTURER OF THE REFLECTIVE SHEETING AND AS APPROVED BY THE ENGINEER.

BASIS OF PAYMENT: THIS WORK WILL BE PAID FOR AT THE CONTRACT UNIT PRICE EACH FOR CABLE GUARD MARKER.

FILE NAME =	USER NAME = sparksgw	DESIGNED -	REVISED -
pw:\11084EBIDINTEG\Illinois.gov\PIDOT\Documents\IDOT Offices\District 6\Projects\0672\Drawings\60\Sheets\60-72H46-sht-deta		DRAWN -	REVISED -
Default	PLOT SCALE = 100.0000' / in.	CHECKED -	REVISED -
	PLOT DATE = 10/23/2014	DATE -	REVISED -

**STATE OF ILLINOIS  
DEPARTMENT OF TRANSPORTATION**

**CABLE GUARD MARKER DETAIL**

SCALE:	SHEET	OF	SHEETS	STA.	TO STA.
--------	-------	----	--------	------	---------

F.A. RTE.	SECTION	COUNTY	TOTAL SHEETS	SHEET NO.
•VAR	***	**	17	17
CONTRACT NO. 72H46			ILLINOIS FED. AID PROJECT	