

STATE OF ILLINOIS
 DEPARTMENT OF TRANSPORTATION
 DIVISION OF HIGHWAYS

**PROPOSED
 HIGHWAY PLANS**

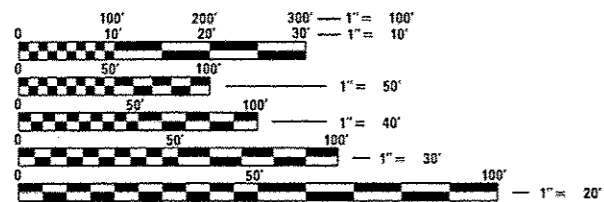
F.A.S. ROUTE 1751, F.A.U. ROUTE 8413 (U.S. RTE. 40)
 SECTION D7 PATCHING 2015-3

ADT = 1600 (2011)

**PATCHING
 FAYETTE COUNTY**
 C-97-095-14

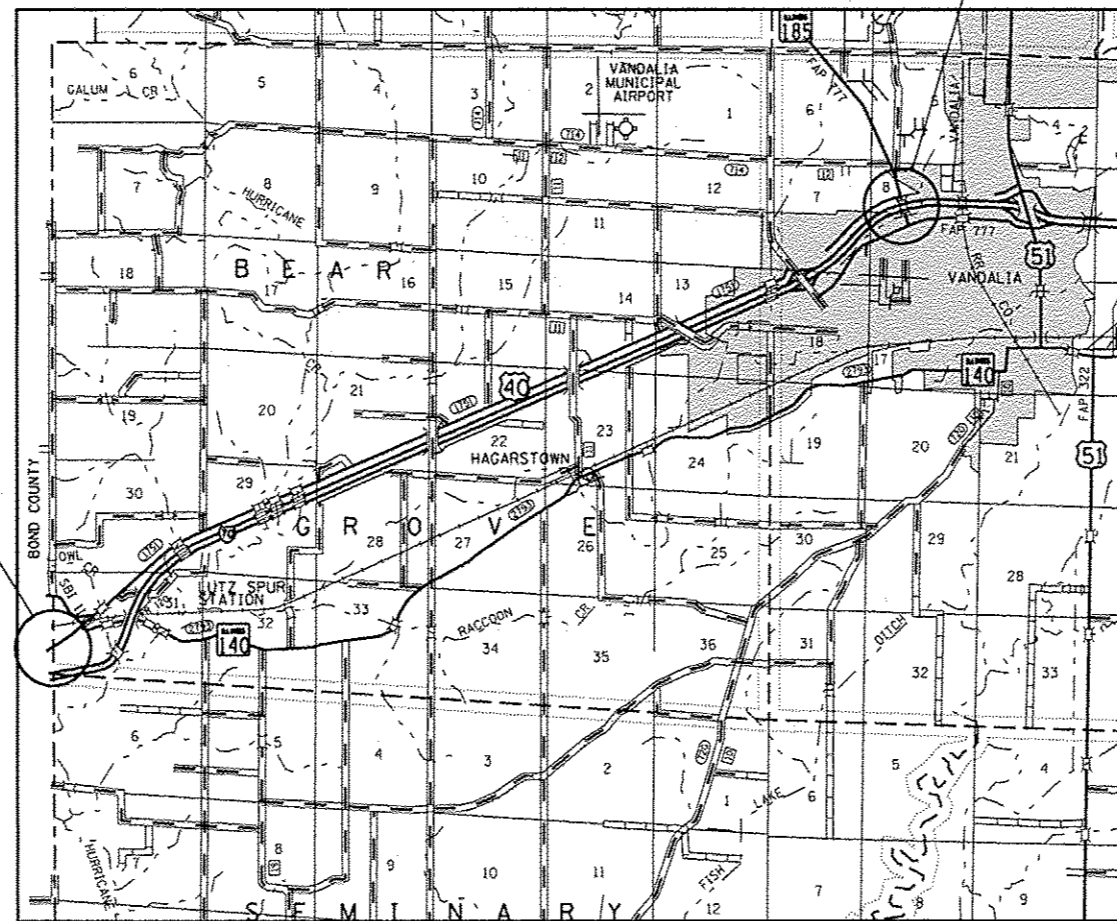
PROJECT ENDS:
 STATION 466 + 25
 (IL. RTE. 185)

PROJECT BEGINS:
 STATION 0 + 00
 (BOND COUNTY LINE)



FULL SIZE PLANS HAVE BEEN PREPARED USING STANDARD ENGINEERING SCALES. REDUCED SIZED PLANS WILL NOT CONFORM TO STANDARD SCALES. IN MAKING MEASUREMENTS ON REDUCED PLANS, THE ABOVE SCALES MAY BE USED.

J.U.L.I.E.
 JOINT UTILITY LOCATION INFORMATION FOR EXCAVATION
 1-800-892-0123
 OR 811



F.A. RTE.	SECTION	COUNTY	TOTAL SHEETS	SHEET NO.
• D7 PATCHING 2015-3		FAYETTE	6	1
		ILLINOIS	CONTRACT NO. 74678	

• FAS 1751 & FAU 8413

D-97-038-14



LOCATION OF SECTION INDICATED THIS: — [thick bar] —

STATE OF ILLINOIS
 DEPARTMENT OF TRANSPORTATION
 DIVISION OF HIGHWAYS

SUBMITTED *October 28 2014*
Respa Z. Smith
 DEPUTY DIRECTOR OF HIGHWAYS, REGION ENGINEER

Jan 30 2015
John D. Baranzelli, P.E.
 acting ENGINEER OF DESIGN AND ENVIRONMENT

Jan 30 2015
Omer Osman, P.E.
 DIRECTOR OF HIGHWAYS, CHIEF ENGINEER

**PRINTED BY THE AUTHORITY
 OF THE STATE OF ILLINOIS**

PROJECT ENGINEER: TOM RONAN
 PROJECT MANAGER: TOM RONAN
 PHONE: (217)-342-8320
 CONTRACT NO. 74678

GROSS LENGTH = 47,626 FT. = 9.02 MILES
 NET LENGTH = 47,626 FT. = 9.02 MILES

INDEX OF SHEETS

SHEET NO.	ITEM
1	COVER SHEET
2	INDEX OF SHEETS, HIGHWAY STANDARDS, & GENERAL NOTES
3	SUMMARY OF QUANTITIES
4	SCHEDULE OF QUANTITIES & DETECTOR LOOP TABLE
5-6	LOCATION MAPS

THE FOLLOWING STANDARDS ARE A PART OF THESE PLANS AND ARE INCLUDED AFTER SHEET NO. 6 :

STD. NO.	DESCRIPTION
000001-06	STANDARD SYMBOLS, ABBREVIATIONS AND PATTERNS
001001-02	AREAS OF REINFORCEMENT BARS
420701-02	PAVEMENT FABRIC
442001-04	CLASS A PATCHES
442101-07	CLASS B PATCHES
701001-02	OFF-ROAD OPERATIONS, 2L2W, MORE THAN 15' AWAY
701006-05	OFF-ROAD OPERATIONS, 2L2W, 15' AWAY TO EDGE OF PAVEMENT
701201-04	LANE CLOSURE, 2L2W, DAY ONLY
701501-06	URBAN LANE CLOSURE, 2L2W - UNDIVIDED
701901-04	TRAFFIC CONTROL DEVICES
886001-01	DETECTOR LOOP INSTALLATIONS
886006-01	TYPICAL LAYOUT FOR DETECTOR LOOPS

GENERAL NOTES

THIS SECTION SHALL BE CONSTRUCTED IN ACCORDANCE WITH THE PLANS; THE "STANDARD SPECIFICATIONS FOR ROAD AND BRIDGE CONSTRUCTION" ADOPTED JANUARY 1, 2012; AND THE SPECIAL PROVISIONS INCLUDED IN THE PROPOSAL.

THIS PROJECT IS LOCATED ON US ROUTE 40 IN FAYETTE COUNTY. THE PROJECT STARTS AT THE BOND COUNTY LINE AND EXTENDS EAST FOR APPROXIMATELY 9.02 MILES TO ILLINOIS ROUTE 185 IN VANDALIA. THE WORK INCLUDED IN SECTION 07 PATCHING 2015-3 CONSISTS OF CLASS A AND CLASS B PAVEMENT PATCHING, DETECTOR LOOPS, TRAFFIC CONTROL, AND ANY OTHER WORK NECESSARY TO COMPLETE THE SECTION.

THE ACTUAL LOCATIONS OF PAVEMENT PATCHING AND FINAL QUANTITIES SHALL BE DETERMINED BY THE ENGINEER IN THE FIELD.

AN ESTIMATED QUANTITY OF DETECTOR LOOPS, TYPE I HAS BEEN INCLUDED TO REPLACE ANY DETECTOR LOOPS THAT ARE WITHIN THE LIMITS OF A PATCH. THE ACTUAL LOCATIONS OF DETECTOR LOOPS AND FINAL QUANTITIES SHALL BE DETERMINED BY THE ENGINEER IN THE FIELD.

• FAS 1751 & FAU 8413

FILE NAME =	USER NAME = staffennk	DESIGNED -	REVISED -	STATE OF ILLINOIS DEPARTMENT OF TRANSPORTATION	INDEX OF SHEETS AND GENERAL NOTES	F.A. RTE.	SECTION	COUNTY	TOTAL SHEETS	SHEET NO.	
c:\p\work\axidot\staffennk\08346942\074678-ht-index.dgn	DRAWN -	REVISED -	CHECKED -			REVISED -	*	07 PATCHING 2015-3	FAYETTE	6	2
PLOT SCALE = 100,0000' / 1" / 1"	CHECKED -	REVISED -	DATE -			REVISED -	CONTRACT NO. 74678				
PLOT DATE = 10/29/2014	DATE -	REVISED -	ILLINOIS FED. AID PROJECT								
Defaults				SCALE: N/A		SHEET 1 OF 1 SHEETS		STA. TO STA.			

100% STATE

100% STATE

SUMMARY OF QUANTITIES			TOTAL QUANTITIES	CONSTRUCTION TYPE CODE	
CODE NO	ITEM	UNIT		0005	0005
				URBAN	RURAL
			FAU 8413	FAS 1751	
44200565	CLASS A PATCHES, TYPE II, 11 INCH	SO YD	182	32	150
44200970	CLASS B PATCHES, TYPE II, 10 INCH	SO YD	761	761	
44200994	CLASS B PATCHES, TYPE II, 12 INCH	SO YD	263	40	223
44200998	CLASS B PATCHES, TYPE III, 12 INCH	SO YD	32		32
44201000	CLASS B PATCHES, TYPE IV, 12 INCH	SO YD	27		27
44201299	DOWEL BARS 1 1/2"	EACH	2652	2072	580
44213000	PATCHING REINFORCEMENT	SO YD	182	32	150
44213100	PAVEMENT FABRIC	SO YD	59		59
44213200	SAW CUTS	FOOT	7742	5117	2625
44213204	TIE BARS 3/4"	EACH	9		9
67100100	MOBILIZATION	L SUM	1	0.5	0.5
70100450	TRAFFIC CONTROL AND PROTECTION, STANDARD 701201	L SUM	1	0.5	0.5
70102620	TRAFFIC CONTROL AND PROTECTION, STANDARD 701501	L SUM	1	1	

SUMMARY OF QUANTITIES			TOTAL QUANTITIES	CONSTRUCTION TYPE CODE	
CODE NO	ITEM	UNIT		0005	0005
				URBAN	RURAL
			FAU 8413	FAS 1751	
88600100	DETECTOR LOOP, TYPE I	FOOT	500	500	
X7015005	CHANGEABLE MESSAGE SIGN	CAL DA	28	14	14
2					

* SPECIALTY ITEM

* FAS 1751 & FAU 8413

13

FILE NAME =	USER NAME = staffennk	DESIGNED -	REVISED -
c:\pwwork\pwwork\staffennk\d02196940\DWG	74678-shs-soq.dgn	DRAWN -	REVISED -
	PLOT SCALE = 100.0000 / 1 in.	CHECKED -	REVISED -
Default	PLOT DATE = 10/29/2014	DATE -	REVISED -

STATE OF ILLINOIS
DEPARTMENT OF TRANSPORTATION

SUMMARY OF QUANTITIES

SCALE: N/A SHEET 1 OF 1 SHEETS STA. TO STA.

F.A. RTE.	SECTION	COUNTY	TOTAL SHEETS	SHEET NO.
*	D7 PATCHING 2015-3	FAYETTE	6	3
			CONTRACT NO. 74678	
(ILLINOIS) FED. AID PROJECT				

PATCHING SCHEDULE

PATCHING SCHEDULE	CLASS A PATCHES, TYPE II, 11"	CLASS B PATCHES, TYPE II, 10"	CLASS B PATCHES, TYPE II, 12"	CLASS B PATCHES, TYPE III, 12"	CLASS B PATCHES, TYPE IV, 12"	PATCHING REINFORCEMENT	DOWEL BARS 1 1/2"	PAVEMENT FABRIC	SAW CUTS	TIE BARS 3/4"
	SO YD	SO YD	SO YD	SO YD	SO YD	SO YD	EACH	SO YD	FOOT	FOOT
URBAN	32	761	40			32	2072		5117	
RURAL	150		223	32	27	150	580	59	2625	9
TOTALS	182	761	263	32	27	182	2652	59	7742	9

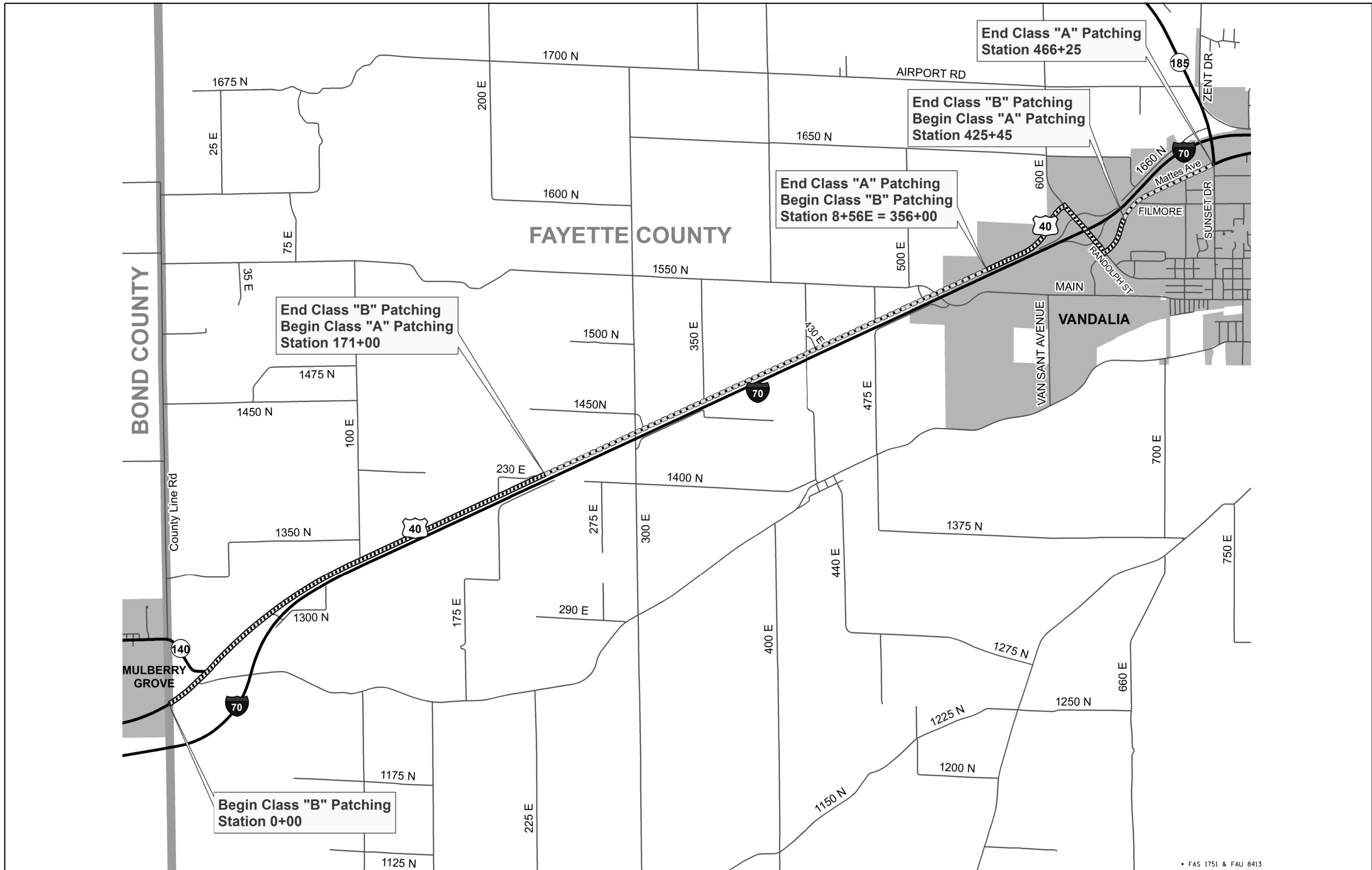
NUMBER OF TURNS REQUIRED
IN DETECTOR LOOPS

6 X 6		LOOP SIZE
		2 TURNS
		3 TURNS
0	545	4 TURNS
546	818	5 TURNS
819	1145	6 TURNS
1146	1527	7 TURNS
1528	1964	8 TURNS
1965	2455	9 TURNS
2456	3000	10 TURNS

THE NUMBERS IN THE TABLE REPRESENT THE LENGTH OF ELECTRIC CABLE FROM THE LOOP TO THE CABINET

• FAS 1751 & FAU 8413

FILE NAME =	USER NAME = steffenmk	DESIGNED -	REVISED -	STATE OF ILLINOIS DEPARTMENT OF TRANSPORTATION	SCHEDULE OF QUANTITIES AND DETECTOR LOOP TABLE				F.A. RTE.	SECTION	COUNTY	TOTAL SHEETS	SHEET NO.	
ci:\pw\work\p\dot\steffenmk\d0396940\075678-sht-sch.dgn		DRAWN -	REVISED -		•	D7 PATCHING 2015-3	FAYETTE	6	4					
Default	PLOT SCALE = 100.0000' / in.	CHECKED -	REVISED -		SCALE: N/A				SHEET 1	OF 1	SHEETS	STA.	TO STA.	CONTRACT NO. 74678
	PLOT DATE = 10/29/2014	DATE -	REVISED -		ILLINOIS FED. AID PROJECT									



FILE NAME =	USER NAME = steffenmk	DESIGNED -	REVISED -
c:\pw\work\p\dot\stef\enmk\d0396940\074678-sht-locations.dgn		DRAWN -	REVISED -
Default	PLOT SCALE = 100.0000' / in.	CHECKED -	REVISED -
	PLOT DATE = 10/29/2014	DATE -	REVISED -

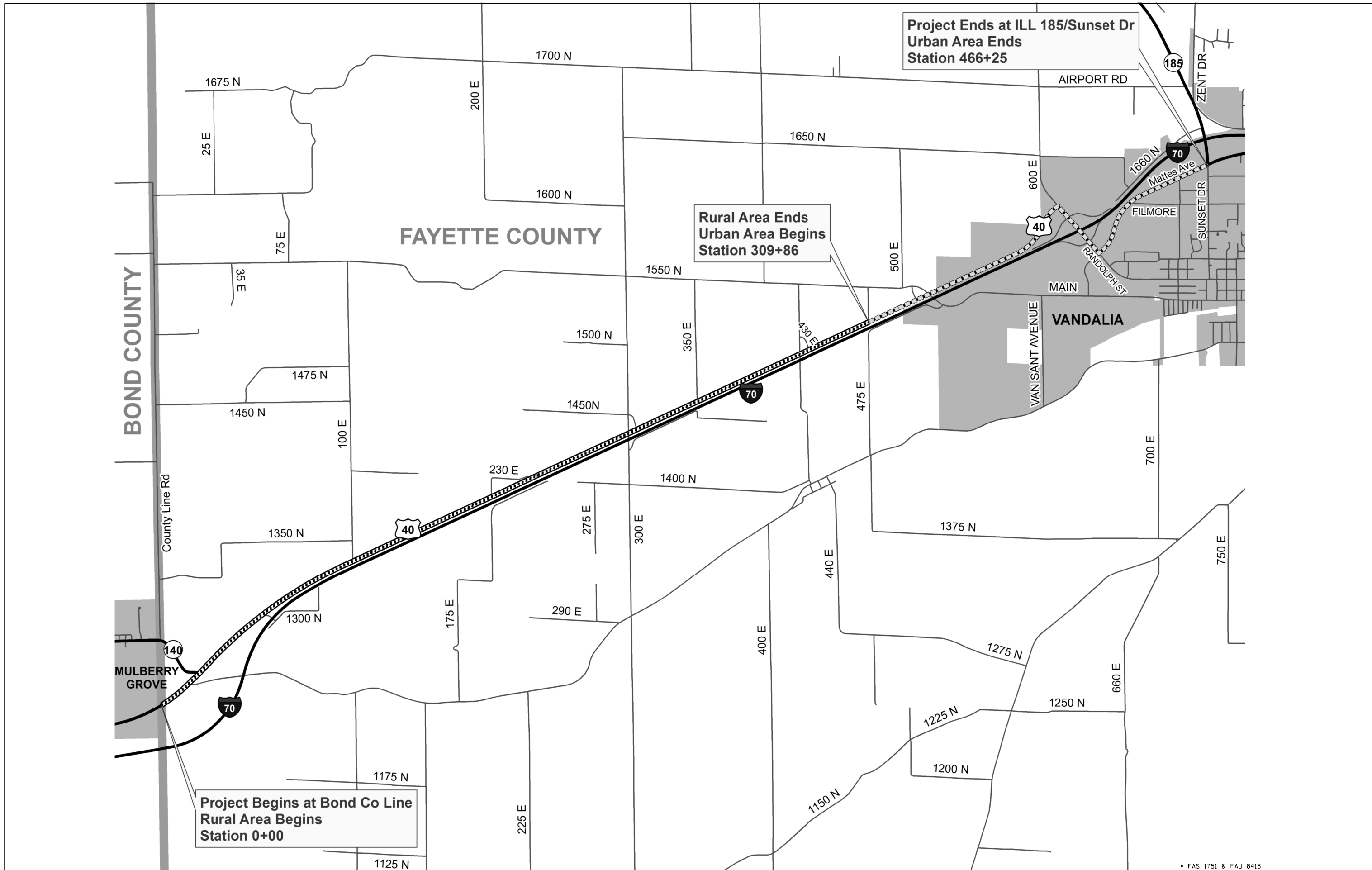
**STATE OF ILLINOIS
DEPARTMENT OF TRANSPORTATION**

PATCHING LOCATION MAP

SCALE: N/A SHEET 1 OF 2 SHEETS STA. TO STA.

F.A. RTE.	SECTION	COUNTY	TOTAL SHEETS	SHEET NO.
•	D7 PATCHING 2015-3	FAYETTE	6	5
CONTRACT NO. 74678				
ILLINOIS FED. AID PROJECT				

• FAS 1751 & FAU 8413



Project Begins at Bond Co Line
Rural Area Begins
Station 0+00

Rural Area Ends
Urban Area Begins
Station 309+86

Project Ends at ILL 185/Sunset Dr
Urban Area Ends
Station 466+25

FILE NAME =	USER NAME = steffenmk	DESIGNED -	REVISED -
c:\pw\work\p\dot\stef\mk\d0396940\074678-sht-locations.dgn		DRAWN -	REVISED -
Default		CHECKED -	REVISED -
	PLOT DATE = 10/29/2014	DATE -	REVISED -

STATE OF ILLINOIS
DEPARTMENT OF TRANSPORTATION

PROJECT LIMITS LOCATION MAP
SCALE: N/A SHEET 2 OF 2 SHEETS STA. TO STA.

• FAS 1751 & FAU 8413		F.A. RTE.	SECTION	COUNTY	TOTAL SHEETS	SHEET NO.
		•	D7 PATCHING 2015-3	FAYETTE	6	6
					CONTRACT NO. 74678	
ILLINOIS FED. AID PROJECT						