

STATE OF ILLINOIS
DEPARTMENT OF TRANSPORTATION
DIVISION OF HIGHWAYS

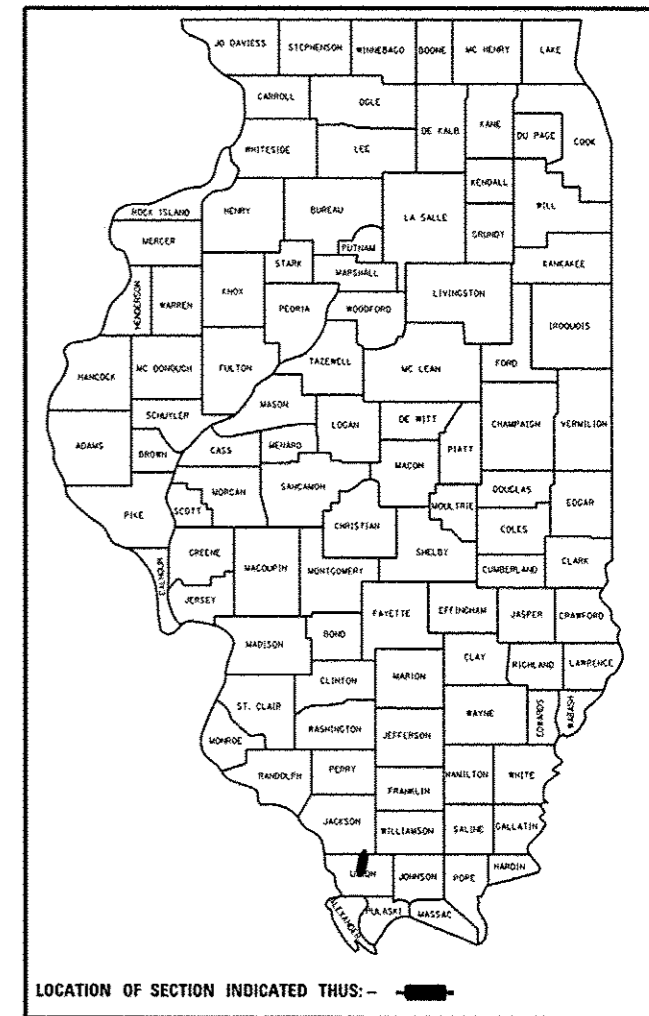
**PROPOSED
HIGHWAY PLANS**

FAS ROUTE 1911 (OLD US 51)
SECTION 11B-3
PROJECT ACRS - 1911 (107)
BOX CULVERT REPLACEMENT
UNION COUNTY

C-99-037-14

F.A.S. RTE.	SECTION	COUNTY	TOTAL SHEETS	SHEET NO.
1911	11B-3	UNION	19	1
		ILLINOIS		CONTRACT NO. 78411

D-99-031-14



FOR INDEX OF SHEETS, SEE SHEET NO. 2

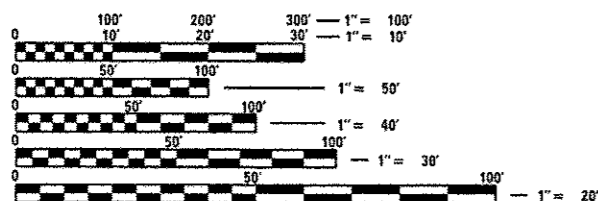
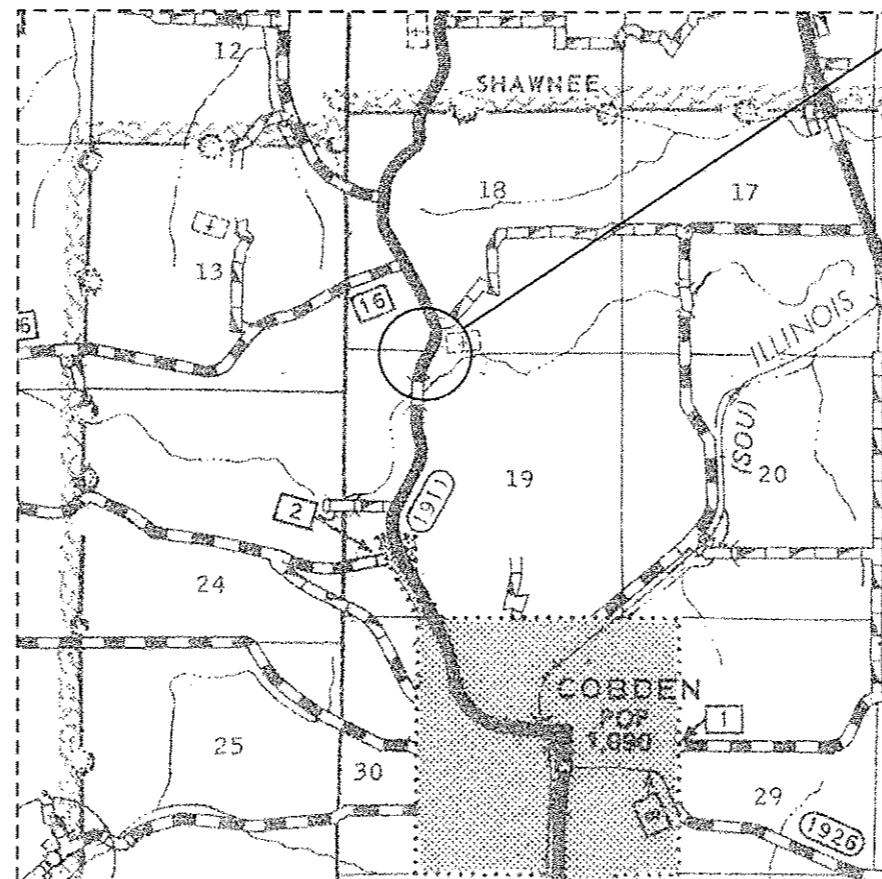
TRAFFIC DATA

2011 ADT = 1150
WITH 3.5% TRUCKS

TOWNSHIP

UNION COUNTY UNIT
ROAD DISTRICT

IMPROVEMENT LOCATION
STRUCTURE 091-7059 (E)
STRUCTURE 091-7092 (P)
OLD US 51 OVER DITCH



FULL SIZE PLANS HAVE BEEN PREPARED USING STANDARD ENGINEERING SCALES. REDUCED SIZED PLANS WILL NOT CONFORM TO STANDARD SCALES. IN MAKING MEASUREMENTS ON REDUCED PLANS, THE ABOVE SCALES MAY BE USED.

J.U.L.I.E.
JOINT UTILITY LOCATION INFORMATION FOR EXCAVATION
1-800-892-0123
OR 811

PROJECT ENGINEER: ADRIAN ADAMS (618) 351-5262
PROJECT MANAGER: DAVID PICHE (618) 351-5227

GROSS LENGTH = 50 FT
NET LENGTH = 50 FT

CONTRACT NO. 78411

STATE OF ILLINOIS
DEPARTMENT OF TRANSPORTATION
DIVISION OF HIGHWAYS

SUBMITTED Dec 10 2015

Adrian Adams
DEPUTY DIRECTOR OF HIGHWAYS, REGION ENGINEER

Jan 30 2015
John D. Baranzelli, PE, P.E.
ENGINEER OF DESIGN AND ENVIRONMENT

Jan 30 2015
Omec Osman, PE, P.E.
DIRECTOR OF HIGHWAYS, CHIEF ENGINEER

**PRINTED BY THE AUTHORITY
OF THE STATE OF ILLINOIS**

CODE NUMBER	PAY ITEM	SN 091-7059 (E), 091-7092 (P)	
		UNIT	TOTAL QUANTITY
20100110	TREE REMOVAL (6 TO 15 UNITS DIAMETER)	UNIT	127
20100210	TREE REMOVAL (OVER 15 UNITS DIAMETER)	UNIT	18
20200100	EARTH EXCAVATION	CU YD	85
20300100	CHANNEL EXCAVATION	CU YD	32
20400800	FURNISHED EXCAVATION	CU YD	531
20700220	POROUS GRANULAR EMBANKMENT	CU YD	259
25000200	SEEDING, CLASS 2	ACRE	0.25
25000400	NITROGEN FERTILIZER NUTRIENT	POUND	23
25000500	PHOSPHOROUS FERTILIZER NUTRIENT	POUND	23
25000600	POTASSIUM FERTILIZER NUTRIENT	POUND	23
25000700	AGRICULTURAL GROUND LIMESTONE	TON	0.5
25100630	EROSION CONTROL BLANKET	SO YD	1459
28000250	TEMPORARY EROSION CONTROL SEEDING	POUND	75
28000400	PERIMETER EROSION BARRIER	FOOT	770

CODE NUMBER	PAY ITEM	SN 091-7059 (E), 091-7092 (P)	
		UNIT	TOTAL QUANTITY
28100107	STONE RIPRAP, CLASS A4	SO YD	61
28200200	FILTER FABRIC	SO YD	61
42000500	PORTLAND CEMENT CONCRETE PAVEMENT 10' "	SO YD	122
42001200	PAVEMENT FABRIC	SO YD	122
44000100	PAVEMENT REMOVAL	SO YD	117
48203029	HOT-MIX ASPHALT SHOULDERS, 8' "	SO YD	560
50102400	CONCRETE REMOVAL	CU YD	71.4
50800205	REINFORCEMENT BARS, EPOXY COATED	POUND	1590
54003000	CONCRETE BOX CULVERTS	CU YD	17.8
54011208	PRECAST CONCRETE BOX CULVERTS 12' X 8'	FOOT	46.7
* 63000001	STEEL PLATE BEAM GUARDRAIL, TYPE A, 6 FOOT POSTS	FOOT	175
* 63000025	STEEL PLATE BEAM GUARDRAIL, ATTACHED TO STRUCTURES	FOOT	38
* 63100045	TRAFFIC BARRIER TERMINAL, TYPE 2	EACH	1
* 63100167	TRAFFIC BARRIER TERMINAL, TYPE 1 (SPECIAL) TANGENT	EACH	3

* SPECIALTY ITEM

FILE NAME =	USER NAME = #USER#	DESIGNED -	REVISED -
dl:\p\work\p1\dot\adamson\p0391296\7841	shs-plan.dgn	DRAWN -	REVISED -
	PLOT SCALE = 100.0000' / 1"	CHECKED -	REVISED -
\$MODELNAME\$	PLOT DATE = 12/9/2014	DATE -	REVISED -

STATE OF ILLINOIS
DEPARTMENT OF TRANSPORTATION

SUMMARY OF QUANTITIES

F.A.S. RTE.	SECTION	COUNTY	TOTAL SHEETS	SHEET NO.
1911	11B-3	UNION	19	3
SCALE: SHEET OF SHEETS STA. TO STA.			CONTRACT NO. 78411	
ILLINOIS FED. AID PROJECT				

2013.1.10

		SN 091-7059 (E), 091-7092 (P)	
		60/20 FED/ST - UNION COUNTY	
		CONSTRUCTION TYPE CODE - 0040	
CODE NUMBER	PAY ITEM	UNIT	TOTAL QUANTITY
66600105	FURNISH AND ERECTING RIGHT OF WAY MARKERS	EACH	14
67100100	MOBILIZATION	L SUM	1
70100450	TRAFFIC CONTROL AND PROTECTION, STANDARD 701201	L SUM	1
70101830	TRAFFIC CONTROL AND PROTECTION, STANDARD BLR 21	L SUM	1
70103815	TRAFFIC CONTROL SURVEILLANCE	CAL DA	4
70106800	CHANGEABLE MESSAGE SIGN	CAL MO	2
* 78001110	PAINT PAVEMENT MARKING - LINE 4''	FOOT	200
* 78200410	GUARDRAIL MARKERS, TYPE A	EACH	8
* 78201000	TERMINAL MARKER, DIRECT APPLIED	EACH	3
78300100	PAVEMENT MARKING REMOVAL	50 FT	67
* X6330725	STEEL PLATE BEAM GUARDRAIL (SHORT RADIUS)	FOOT	45

* SPECIALTY ITEM

FILE NAME *	USER NAME = *USER*	DESIGNED -	REVISED -	STATE OF ILLINOIS DEPARTMENT OF TRANSPORTATION	SUMMARY OF QUANTITIES				F.A.S. RTE.	SECTION	COUNTY	TOTAL SHEETS	SHEET NO.
c:\pvc_work\pvc\dot\adamson\0301096\784	ant-plan.dgn	DRAWN -	REVISED -						1911	11B-3	UNION	19	4
	PLOT SCALE = 1/8"=1'-0"	CHECKED -	REVISED -		CONTRACT NO. 78411				ILLINOIS FED. AID PROJECT				
#MODELNAME*	PLOT DATE = 12/9/2014	DATE -	REVISED -		SCALE:	SHEET	OF	SHEETS	STA.	TO STA.			

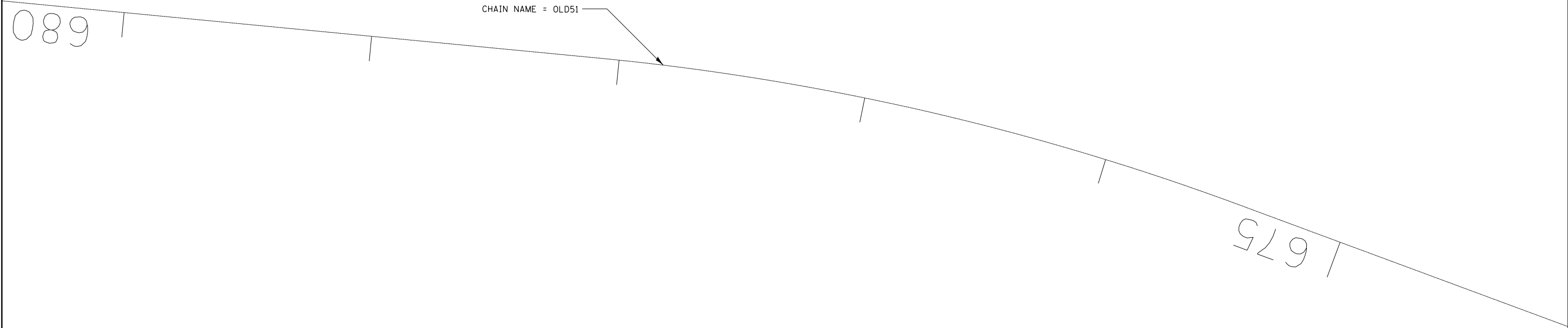
TREE REMOVAL SCHEDULE		
STATION	TREE REMOVAL (6 TO 15 UNITS DIAMETER)	TREE REMOVAL (OVER 15 UNITS DIAMETER)
	UNIT	UNIT
678+50 LT	8	
678+50 LT	6	
678+58 LT	8	
678+83 LT	8	
678+84 LT	6	
678+90 LT	7	
675+30 RT	15	
675+42 RT	8	
675+45 RT	8	
675+60 RT	14	
675+64 RT	6	
675+69 RT	7	
676+07 RT		18
676+59 RT	8	
676+59 RT	9	
676+59 RT	9	
TOTALS	127	18

PAVING SCHEDULE								
STATION				PAVEMENT REMOVAL	PORTLAND CEMENT CONCRETE PAVEMENT, 10''	PAVEMENT FABRIC	HOT-MIX ASPHALT SHOULDERS, 8''	
				SQ YD	SQ YD	SQ YD	SQ YD	
676+08.93	LT	TO	676+15.62	LT				5
676+15.62	LT	TO	676+50	LT				33
676+50	LT	TO	677+00	LT	58.5	61	61	48
677+00	LT	TO	678+09.38	LT				106
678+09.38	LT	TO	678+19.41	LT				11
678+19.41	LT	TO	678+43.38	LT				19
678+43.38	LT	TO	678+80	LT				24
675+08.32	RT	TO	675+15.09	RT				6
675+15.09	RT	TO	676+50	RT				130
676+50	RT	TO	677+00	RT	58.5	61	61	48
677+00	RT	TO	677+36.08	RT				35
677+36.08	RT	TO	677+37.42	RT				1
677+37.42	RT	TO	678+80	RT				94
TOTALS					117	122	122	560

GUARDRAIL SCHEDULE										
STATION				TRAFFIC BARRIER TERMINAL, TY 1 SPL TANGENT	TRAFFIC BARRIER TERMINAL, TY 2	STEEL PLATE BEAM GUARDRAIL	STEEL PLATE BEAM GUARDRAIL ATTACHED TO STRUCTURES	STEEL PLATE BEAM GUARDRAIL (SHORT RADIUS)		
				EACH	EACH	FOOT	FOOT	FOOT		
675+15.62	RT	TO	675+65.62	RT	1					
675+65.62	RT	TO	676+65.62	RT		100				
676+65.62	RT	TO	676+84.38	RT			19			
676+84.38	RT	TO	677+21.38	RT		1			45	
676+15.62	LT	TO	676+65.62	LT	1					
676+65.62	LT	TO	676+84.38	LT			19			
676+84.38	LT	TO	677+59.38	LT			75			
677+59.38	LT	TO	678+09.38	LT	1					
TOTALS					3	1	175	38	45	

PAVEMENT MARKING SCHEDULE								
STATION				NOTES	PAINT PAVEMENT MARKING - LINE 4''			
					SOLID WHITE		SOLID DOUBLE YELLOW	
					FOOT		FOOT	
676+50.00	RT	TO	677+00.00	RT		50		
676+50.00		TO	677+00.00		ALONG CENTERLINE			100
676+50.00	LT	TO	677+00.00	LT		50		
SUBTOTALS						100		100
TOTALS								200

PRECAST BOX CULVERT SCHEDULE (ASTM C 1577)							
STATION			SIZE	SKEW	DESIGN FILL (FT.)		PGE BACKFILL REQUIRED
					EDGE OF SHLD. (MIN)	MAXIMUM	
676+61.00	TO	676+75.00	12' X 8'	10°	* 1.0'	* 2.4'	259 CU YD



FILE NAME =	USER NAME = \$USER*	DESIGNED -	REVISED -
c:\pw\work\pwidot\adamsem\d0381096\7841	-sht-plan.dgn	DRAWN -	REVISED -
\$MODELNAME*	PLOT SCALE = 40.0000' / in.	CHECKED -	REVISED -
	PLOT DATE = 12/9/2014	DATE -	REVISED -

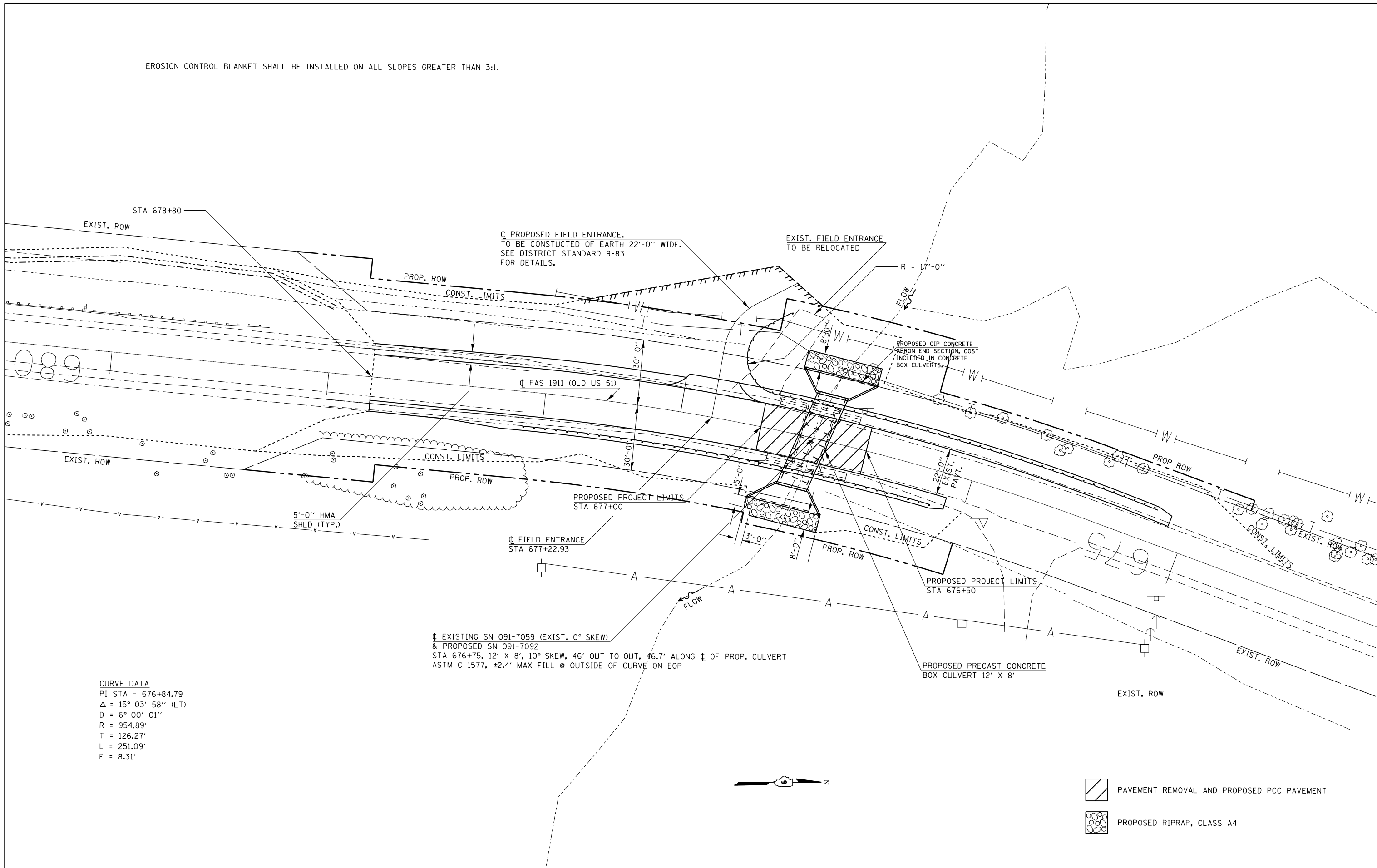
**STATE OF ILLINOIS
DEPARTMENT OF TRANSPORTATION**

**GEOPAK ELEMENTS
IDENTIFICATION SHEET**

F.A.S. RTE.	SECTION	COUNTY	TOTAL SHEETS	SHEET NO.
1911	11B-3	UNION	19	6
CONTRACT NO. 78411			ILLINOIS FED. AID PROJECT	

SCALE: SHEET OF SHEETS STA. TO STA.

EROSION CONTROL BLANKET SHALL BE INSTALLED ON ALL SLOPES GREATER THAN 3:1.



CURVE DATA
 PI STA = 676+84.79
 Δ = 15° 03' 58" (LT)
 D = 6° 00' 01"
 R = 954.89'
 T = 126.27'
 L = 251.09'
 E = 8.31'

◊ EXISTING SN 091-7059 (EXIST. 0° SKEW)
 & PROPOSED SN 091-7092
 STA 676+75, 12' X 8', 10° SKEW, 46' OUT-TO-OUT, 46.7' ALONG ◊ OF PROP. CULVERT
 ASTM C 1577, ±2.4' MAX FILL @ OUTSIDE OF CURVE ON EOP

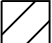
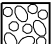
◊ PROPOSED FIELD ENTRANCE.
 TO BE CONSTRUCTED OF EARTH 22'-0" WIDE.
 SEE DISTRICT STANDARD 9-83
 FOR DETAILS.

EXIST. FIELD ENTRANCE
 TO BE RELOCATED

PROPOSED CIP CONCRETE
 AERON END SECTION, COST
 INCLUDED IN CONCRETE
 BOX CULVERTS.

PROPOSED PRECAST CONCRETE
 BOX CULVERT 12' X 8'



-  PAVEMENT REMOVAL AND PROPOSED PCC PAVEMENT
-  PROPOSED RIPRAP, CLASS A4

FILE NAME =	USER NAME = \$USER\$	DESIGNED -	REVISED -
ct:\pw\work\p\dot\adamson\d0381096\7841	-sht-plan.dgn	DRAWN -	REVISED -
\$MODELNAME\$	PLOT SCALE = 40.0000' / in.	CHECKED -	REVISED -
	PLOT DATE = 12/9/2014	DATE -	REVISED -

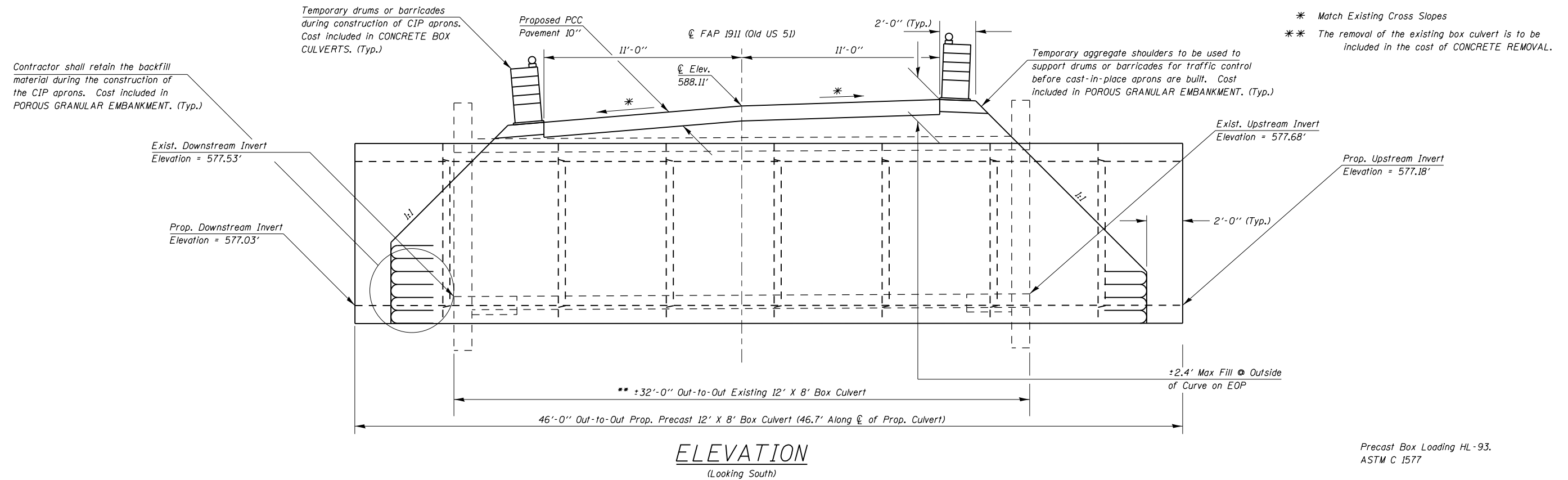
**STATE OF ILLINOIS
 DEPARTMENT OF TRANSPORTATION**

**GENERAL PLAN
 SN 091-7059**

SCALE: SHEET OF SHEETS STA. TO STA.

F.A.S. RTE.	SECTION	COUNTY	TOTAL SHEETS	SHEET NO.
1911	11B-3	UNION	19	7
CONTRACT NO. 78411			ILLINOIS FED. AID PROJECT	

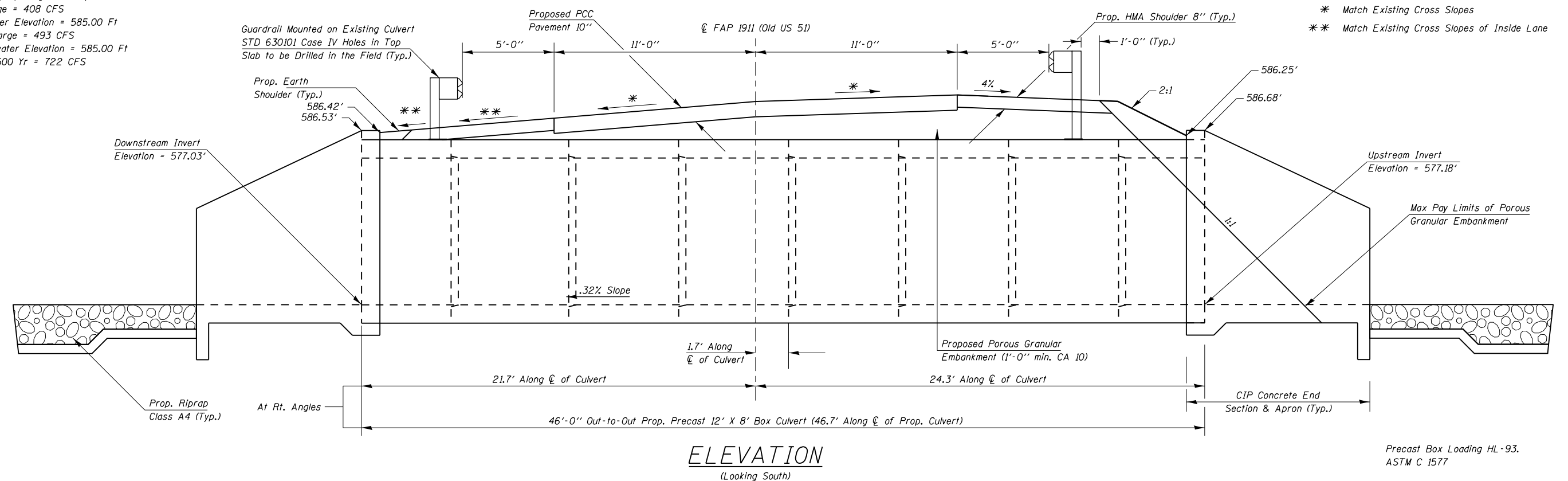
TEMPORARY SECTION PRIOR TO CONSTRUCTION OF CAST-IN-PLACE APRONS



FINAL SECTION AFTER CONSTRUCTION OF CAST-IN-PLACE APRONS

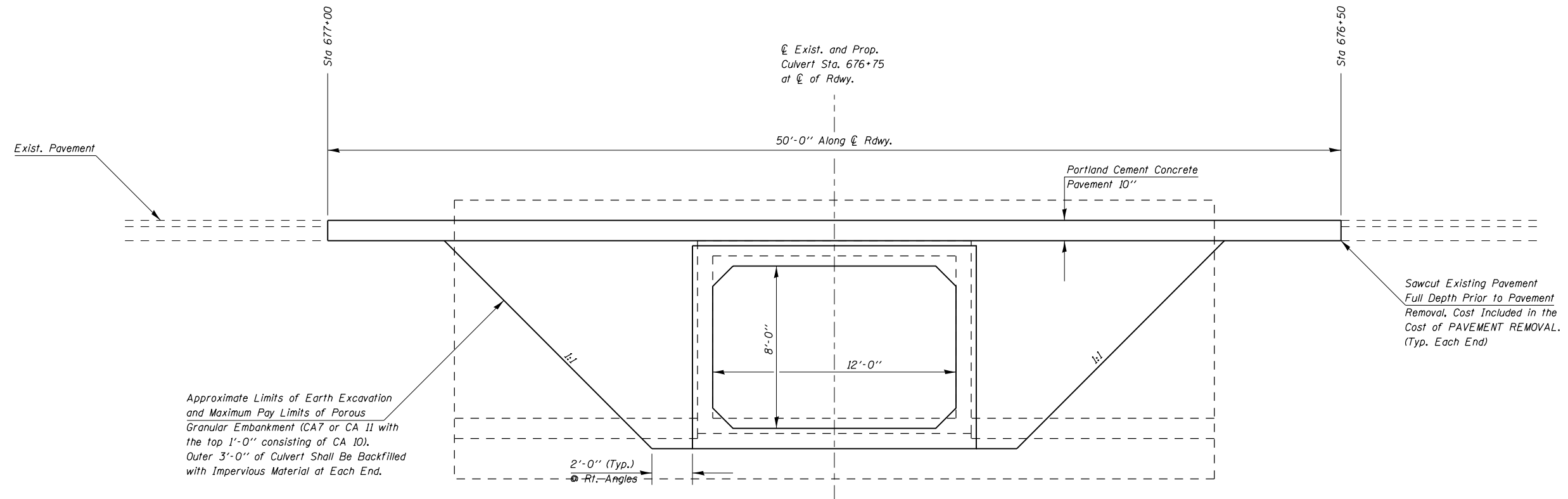
HYDRAULIC DATA

Drainage Area = 0.01 Sq Mi
 Design Waterway Opening = 96 Sq Ft
 Design Discharge = 408 CFS
 Design Headwater Elevation = 585.00 Ft
 100 Year Discharge = 493 CFS
 100 Year Headwater Elevation = 585.00 Ft
 Overtopping > 500 Yr = 722 CFS

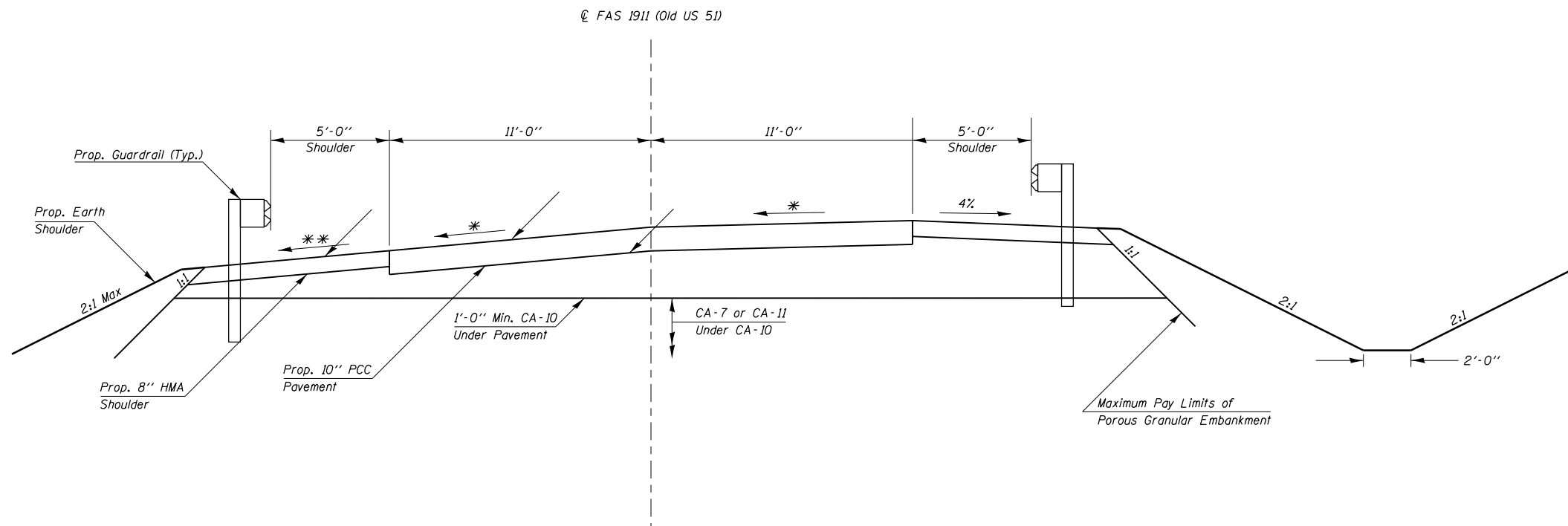


FILE NAME =	USER NAME = \$USER\$	DESIGNED -	REVISED -	STATE OF ILLINOIS	TEMPORARY AND FINAL SECTIONS	F.A.U. RTE.	SECTION	COUNTY	TOTAL SHEETS	SHEET NO.
ct:\pw\work\p\midot\adamson\d0381096\7841	-sht-plan.dgn	DRAWN -	REVISED -	DEPARTMENT OF TRANSPORTATION	SCALE:	1911	11B-3	UNION	19	8
MODELNAME	PLOT DATE = 12/9/2014	CHECKED -	REVISED -		SHEET OF SHEETS	CONTRACT NO. 78411		ILLINOIS FED. AID PROJECT		
		DATE -	REVISED -		STA. TO STA.					

LIMITS OF POROUS GRANULAR EMBANKMENT



SECTION WITHIN PAVEMENT REMOVAL



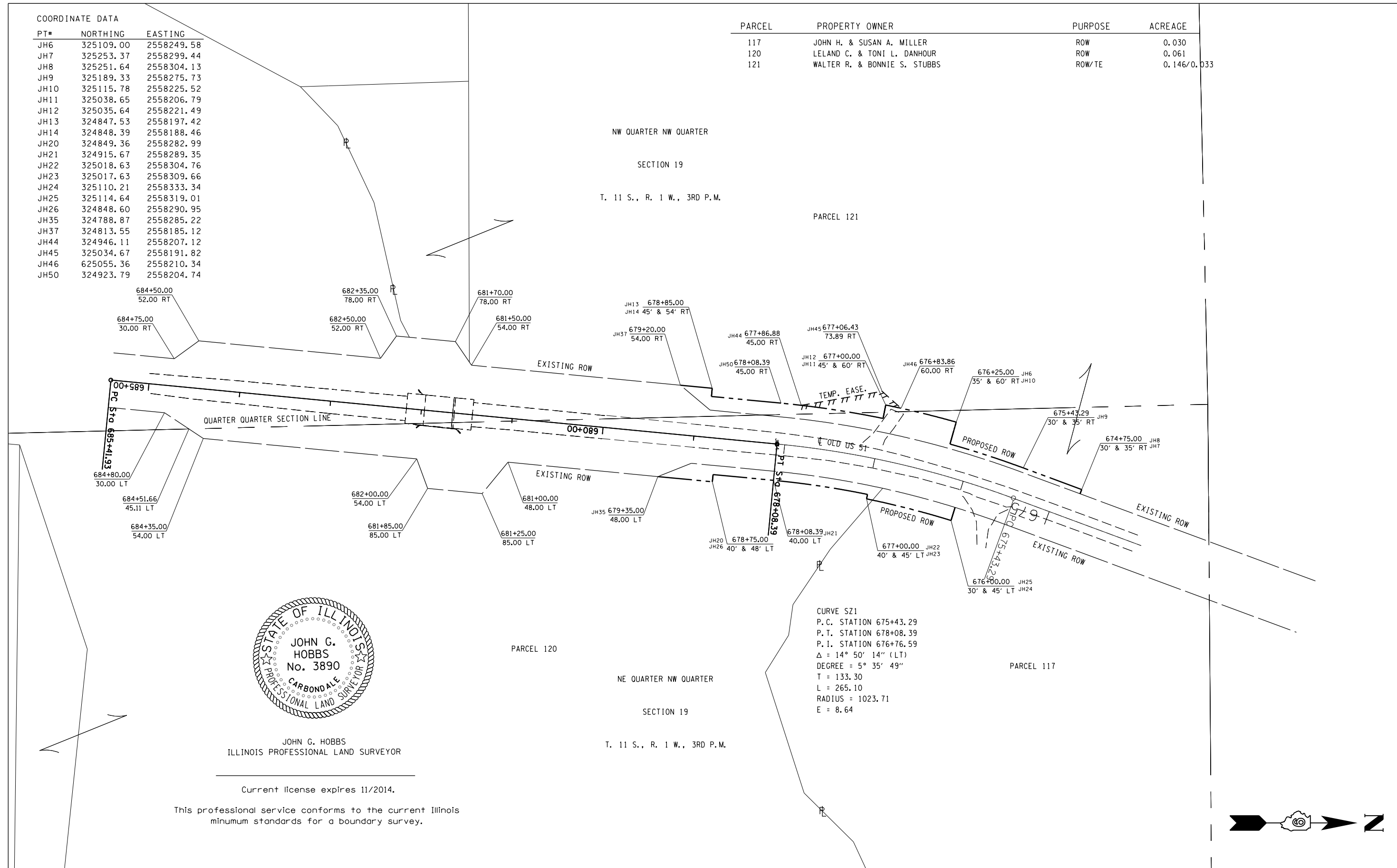
* Match Existing Cross Slopes
 ** Match Existing Cross Slopes of Inside Lane

FILE NAME =	USER NAME = \$USER\$	DESIGNED -	REVISED -	STATE OF ILLINOIS DEPARTMENT OF TRANSPORTATION	TEMPORARY AND FINAL SECTIONS				F.A.S. RTE.	SECTION	COUNTY	TOTAL SHEETS	SHEET NO.		
ci:\pw\work\p\dot\adamsem\d0381096\7841	-sht-plan.dgn	DRAWN -	REVISED -		SCALE:	SHEET	OF	SHEETS	STA.	TO STA.	1911	11B-3	UNION	19	9
#MODELNAME#	PLOT SCALE = 6.0000' / in.	CHECKED -	REVISED -								CONTRACT NO. 78411				
	PLOT DATE = 12/9/2014	DATE -	REVISED -								ILLINOIS FED. AID PROJECT				

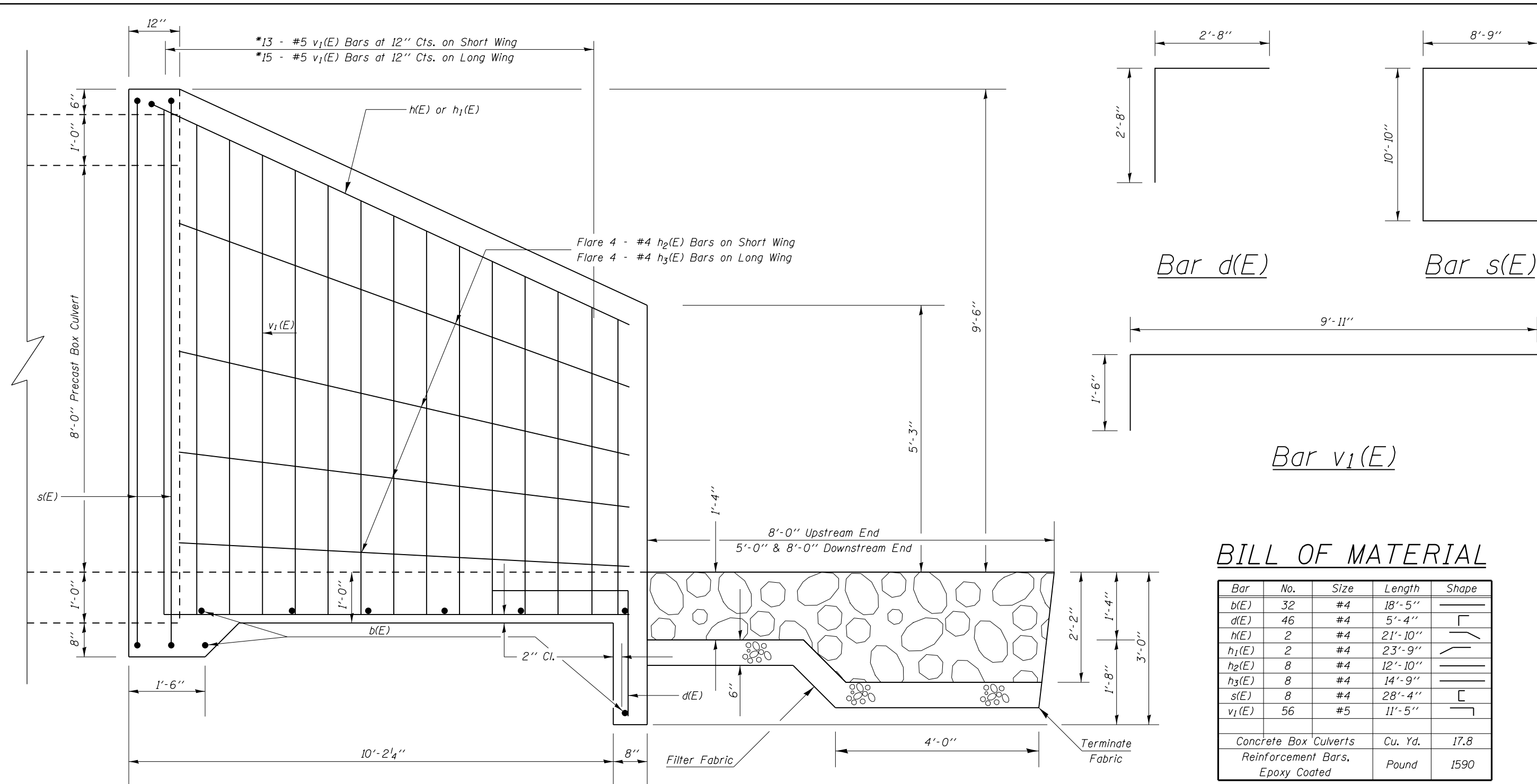
COORDINATE DATA

PT#	NORTHING	EASTING
JH6	325109.00	2558249.58
JH7	325253.37	2558299.44
JH8	325251.64	2558304.13
JH9	325189.33	2558275.73
JH10	325115.78	2558225.52
JH11	325038.65	2558206.79
JH12	325035.64	2558221.49
JH13	324847.53	2558197.42
JH14	324848.39	2558188.46
JH20	324849.36	2558282.99
JH21	324915.67	2558289.35
JH22	325018.63	2558304.76
JH23	325017.63	2558309.66
JH24	325110.21	2558333.34
JH25	325114.64	2558319.01
JH26	324848.60	2558290.95
JH35	324788.87	2558285.22
JH37	324813.55	2558185.12
JH44	324946.11	2558207.12
JH45	325034.67	2558191.82
JH46	625055.36	2558210.34
JH50	324923.79	2558204.74

PARCEL	PROPERTY OWNER	PURPOSE	ACREAGE
117	JOHN H. & SUSAN A. MILLER	ROW	0.030
120	LELAND C. & TONI L. DANHOUR	ROW	0.061
121	WALTER R. & BONNIE S. STUBBS	ROW/TE	0.146/0.033



FILE NAME =	USER NAME = \$USER\$	DESIGNED -	REVISED -	STATE OF ILLINOIS DEPARTMENT OF TRANSPORTATION	RIGHT OF WAY SHEET OLD US 51 SN#091-7059		F.A. RTE.	SECTION	COUNTY	TOTAL SHEETS	SHEET NO.	
c:\pwork\work\pwork\adamsam\d0381096\7841	-sht-row.dgn	DRAWN -	REVISED -		SCALE: 1" = 100'	SHEET 1	OF 1 SHEETS	STA. 674+75.00	TO STA. 680+00.00	11B-3	UNION	
\$MODELNAME\$	PLOT SCALE = 100.0000' / in.	CHECKED -	REVISED -					R-99-011-12		CONTRACT NO.	78411	
	PLOT DATE = 12/9/2014	DATE -	REVISED -					ILLINOIS FED. AID PROJECT				



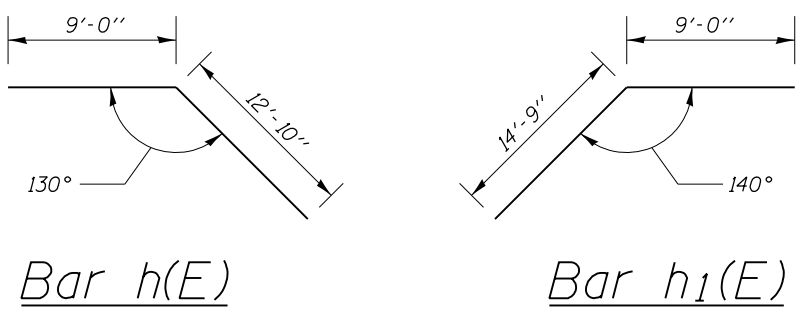
HALF SIDE ELEVATION

BILL OF MATERIAL

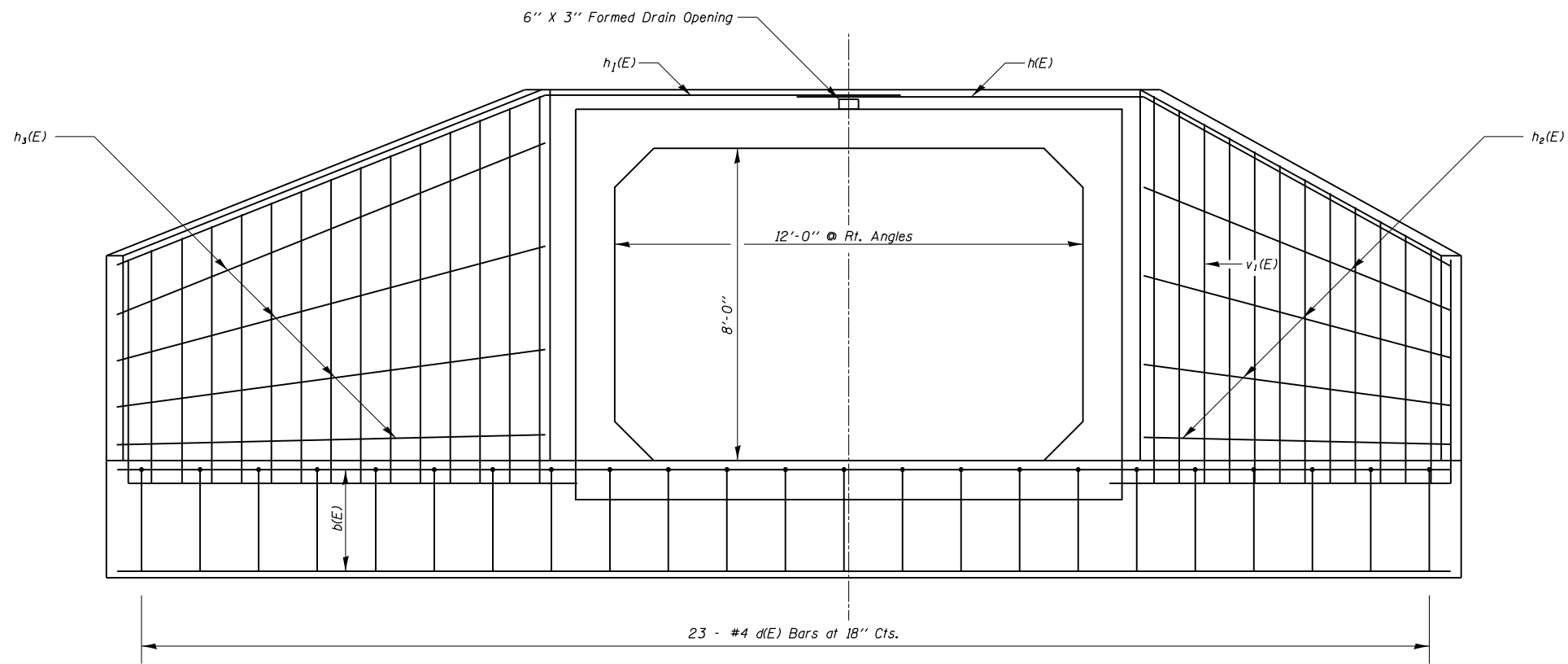
Bar	No.	Size	Length	Shape
b(E)	32	#4	18'-5"	—
d(E)	46	#4	5'-4"	┌
h(E)	2	#4	21'-10"	└
h ₁ (E)	2	#4	23'-9"	└
h ₂ (E)	8	#4	12'-10"	—
h ₃ (E)	8	#4	14'-9"	—
s(E)	8	#4	28'-4"	┌
v ₁ (E)	56	#5	11'-5"	┌
Concrete Box Culverts			Cu. Yd.	17.8
Reinforcement Bars, Epoxy Coated			Pound	1590

Reinforcement bars designated (E) shall be epoxy coated.
 *Cut or bend to fit.
 Reinforcement bars shall conform to the requirements of ASTM A 706.
 Exposed edges shall be beveled 3/4"

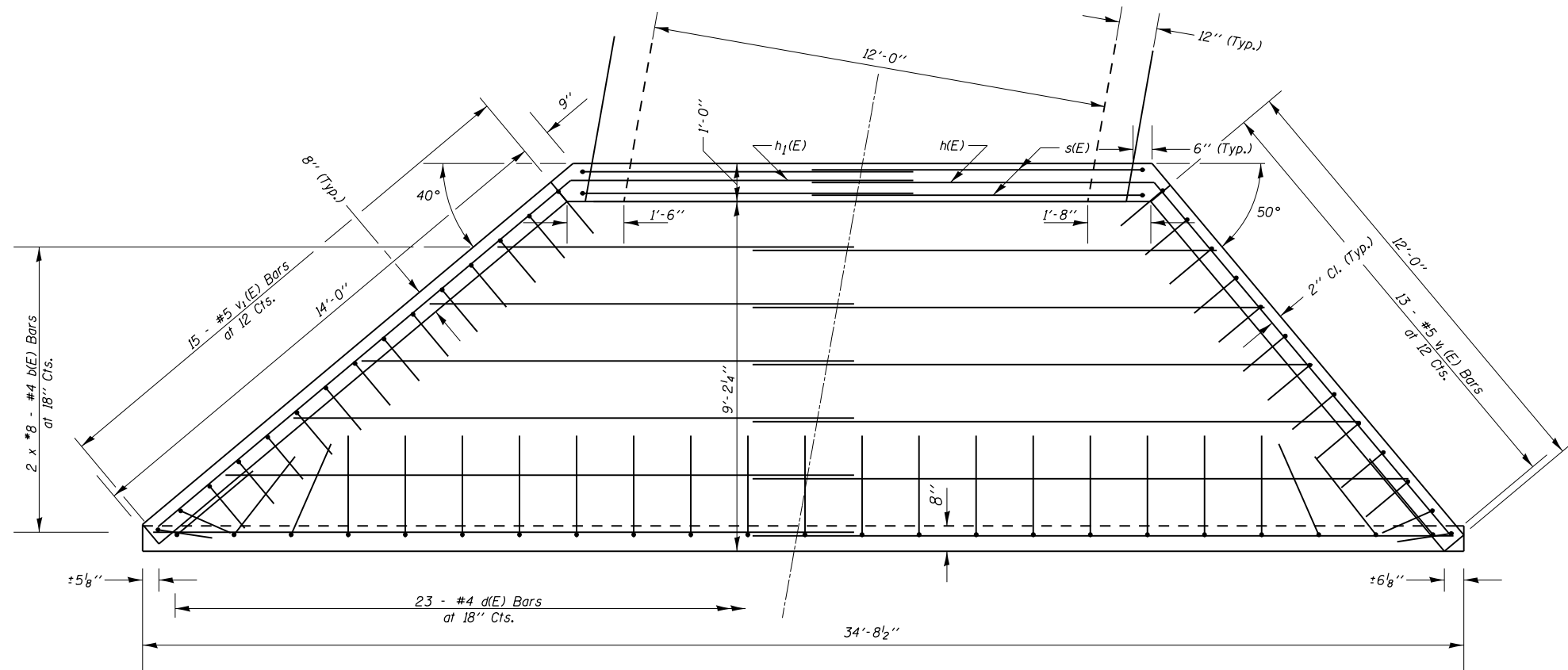
Cast-in-Place
 Apron End Section Details
 Union County
 SN 091-7092



DESIGN STRESSES
 f_y = 60,000 psi
 f_c' = 3,500 psi



END ELEVATION



PLAN

Min. Bar Lap
#4 - 1'-4"

* Cut or Bend to Fit
Work this sheet with Sheet 11 of 19.

FILE NAME =	USER NAME = \$USER\$	DESIGNED -	REVISED -
ct:\pw\work\p\dot\adamsem\d0381096\7841	-sht-plan.dgn	DRAWN -	REVISED -
\$MODELNAME\$	PLOT SCALE = 4.0000' / in.	CHECKED -	REVISED -
	PLOT DATE = 12/9/2014	DATE -	REVISED -

STATE OF ILLINOIS
DEPARTMENT OF TRANSPORTATION

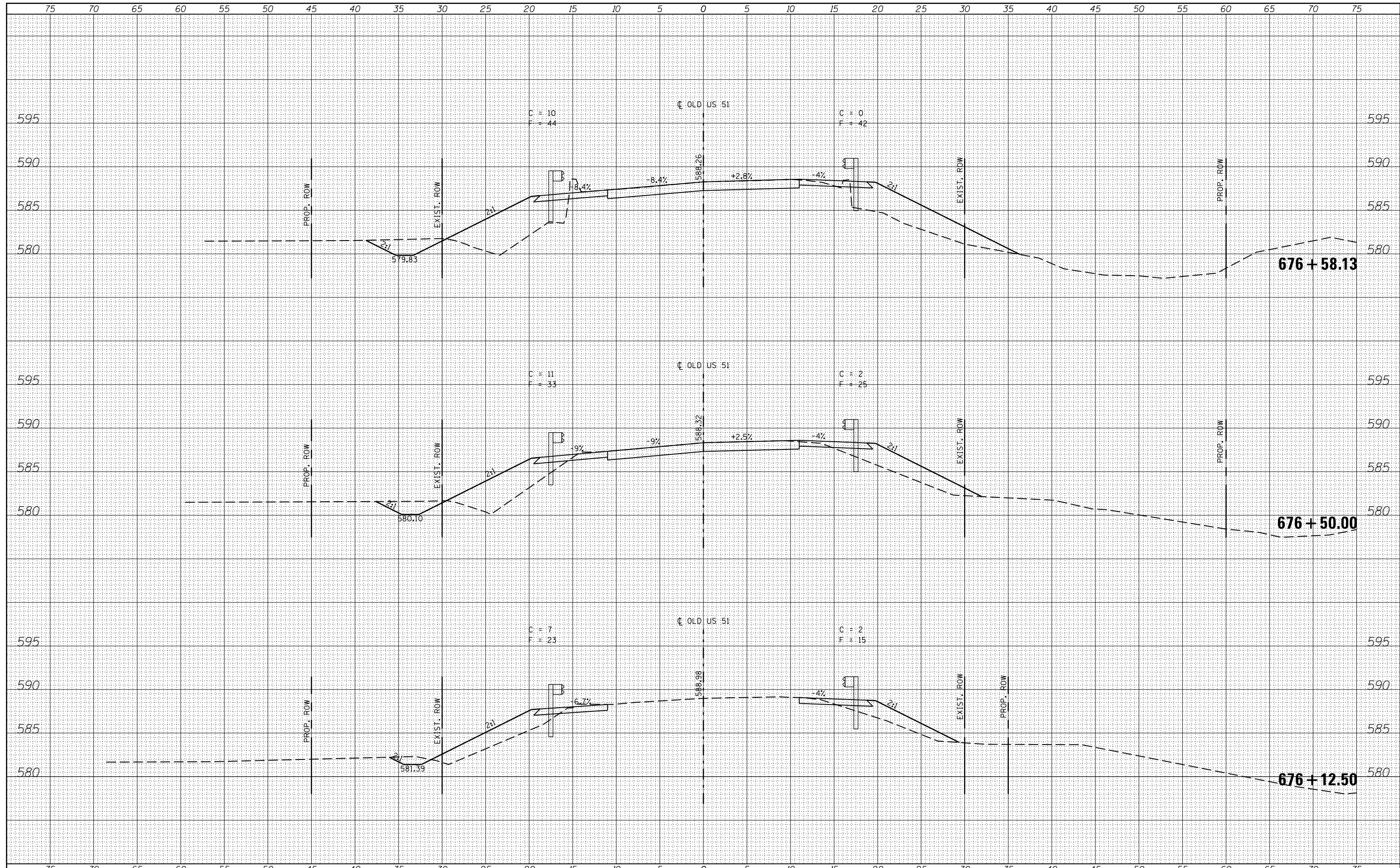
CAST-IN-PLACE APRON END SECTION DETAILS
SN 091-7092

SCALE: SHEET OF SHEETS STA. TO STA.

F.A.S. RTE.	SECTION	COUNTY	TOTAL SHEETS	SHEET NO.
1911	11B-3	UNION	19	12
CONTRACT NO. 78411			ILLINOIS FED. AID PROJECT	

DATE	
BY	
FINAL SURVEY	SURVEYED
NOTE BOOK	PLOTTED
NO.	TEMPLATE
	AREAS CHECKED

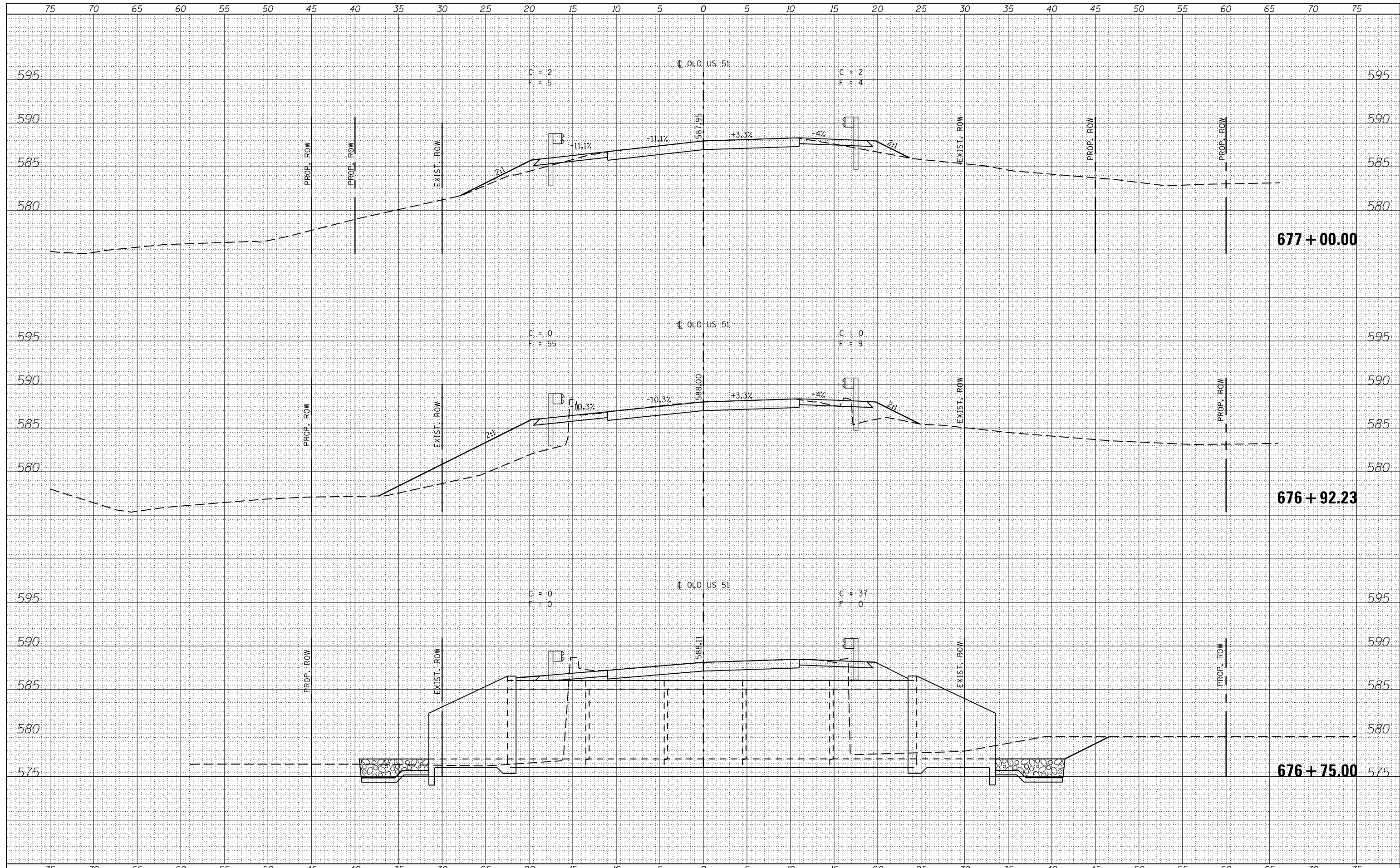
DATE	
BY	
ORIGINAL SURVEY	SURVEYED
NOTE BOOK	PLOTTED
NO.	TEMPLATE
	AREAS CHECKED



FILE NAME =	USER NAME = \$USERS	DESIGNED -	REVISÉ -	STATE OF ILLINOIS DEPARTMENT OF TRANSPORTATION	CROSS SECTIONS			F.A.S. RTE.	SECTION	COUNTY	TOTAL SHEETS	SHEET NO.
es:\pw_work\p\dot\adamson\d0381096\78411-sht-x.dgn		DRAWN -	REVISÉ -		1911	11B-3	UNION	19	14			
		CHECKED -	REVISÉ -		CONTRACT NO. 78411							
\$MODELNAME\$		DATE -	REVISÉ -		SCALE:	SHEET	OF	SHEETS	STA.	TO	STA.	ILLINOIS FED. AID PROJECT

DATE	
BY	
ORIGINAL SURVEY NO.	
SURVEYED	
PLOTTED	
TEMPLATE	
AREAS CHECKED	
NO.	

DATE	
BY	
ORIGINAL SURVEY NO.	
SURVEYED	
PLOTTED	
TEMPLATE	
AREAS CHECKED	
NO.	



FILE NAME	USER NAME	DESIGNED	REVIS
es:\pw_work\p\dot\adamson\d0381096\78411-sht-x.dgn	=SUSERS	-	-
		DRAWN	REVIS
		-	-
		CHECKED	REVIS
		-	-
		DATE	REVIS
		-	-
MODELNAME			

DESIGNED	REVIS
-	-
DRAWN	REVIS
-	-
CHECKED	REVIS
-	-
DATE	REVIS
-	-

**STATE OF ILLINOIS
DEPARTMENT OF TRANSPORTATION**

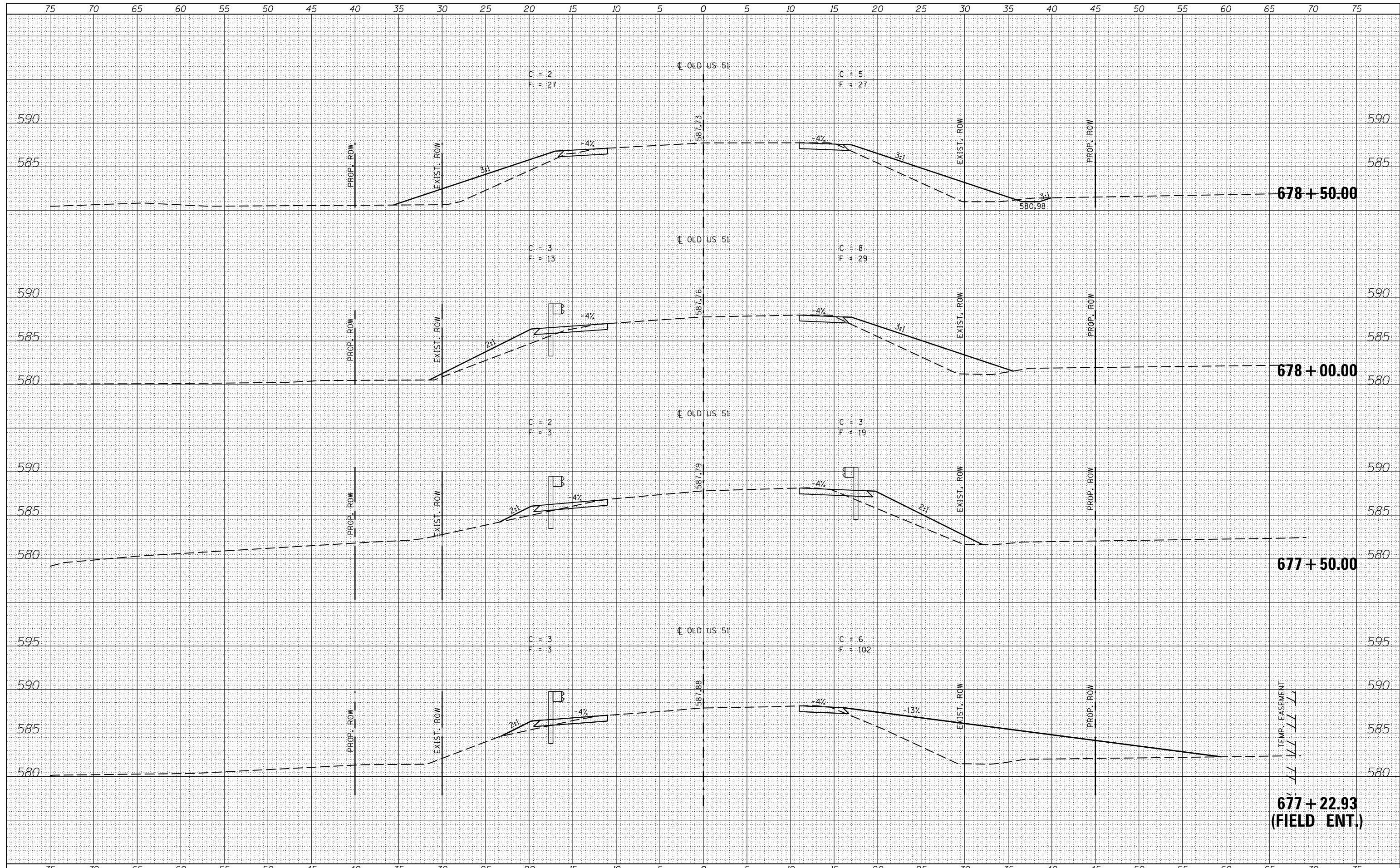
CROSS SECTIONS

SCALE: SHEET OF SHEETS STA. TO STA.

F.A.S. RTE.	SECTION	COUNTY	TOTAL SHEETS	SHEET NO.
1911	11B-3	UNION	19	15
CONTRACT NO. 78411				
ILLINOIS FED. AID PROJECT				

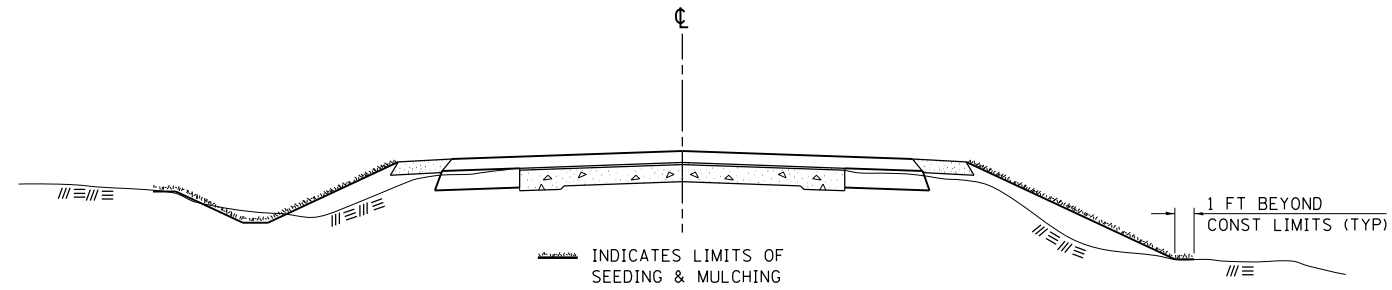
DATE	
BY	
ORIGINAL SURVEY	
SURVEYED	
PLOTTED	
TEMPLATE	
AREAS	
CHECKED	
NO.	

DATE	
BY	
ORIGINAL SURVEY	
SURVEYED	
PLOTTED	
TEMPLATE	
AREAS	
CHECKED	
NO.	



FILE NAME =	USER NAME = \$USERS	DESIGNED -	REVISED -	STATE OF ILLINOIS DEPARTMENT OF TRANSPORTATION	CROSS SECTIONS			F.A.S. RTE.	SECTION	COUNTY	TOTAL SHEETS	SHEET NO.
es:\pw_work\p1dot\adamson\d0381096\78411-sht-x.dgn		DRAWN -	REVISED -		1911	11B-3	UNION	19	16			
PLOT SCALE = 10.0000' / in.		CHECKED -	REVISED -		CONTRACT NO. 78411							
PLOT DATE = 12/9/2014		DATE -	REVISED -		SCALE:	SHEET	OF	SHEETS	STA.	TO	STA.	ILLINOIS FED. AID PROJECT

SEEDING & MULCHING



GENERAL NOTES

IN GENERAL, ALL EARTH SURFACES DISTURBED DURING CONSTRUCTION OPERATIONS SHALL BE SEEDED AND MULCHED UPON COMPLETION OF ALL GRADING OPERATIONS.

FERTILIZER NUTRIENTS AND LIMESTONE SHALL BE APPLIED TO ALL SEEDED AREAS.

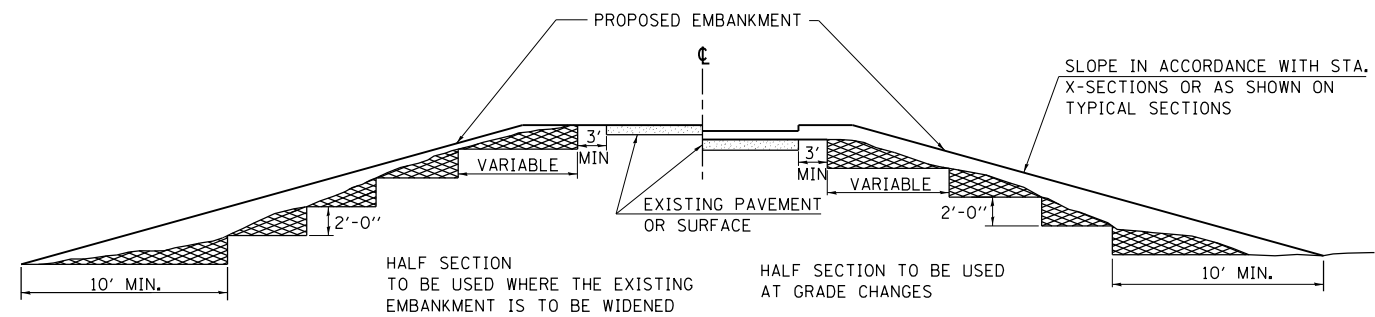
THE RATES OF APPLICATION OF FERTILIZER, MULCH AND LIMESTONE SHALL BE AS SPECIFIED IN THE SPECIAL PROVISIONS.

SECTIONS 250 AND 251 OF THE STANDARD SPECIFICATIONS SHALL GOVERN THIS WORK EXCEPT AS SPECIFIED HEREIN OR AS NOTED IN THE SPECIAL PROVISIONS.

REVISIONS	
REDRAWN	2-15-89
REVISED	8-15-94
REVISED	6-3-99
REVISED	3-27-08

STD. 9-12

TYPICAL CROSS SECTION SHOWING STEP CONSTRUCTION ON EXISTING FILL



MATERIAL TO BE REMOVED AND REPLACED IN THE EMBANKMENT IN ACCORDANCE WITH ART. 205.04 OF THE STANDARD SPECIFICATION. COST TO BE INCLUDED IN THE VARIOUS ITEMS OF EXCAVATION AND NO ADDITIONAL COMPENSATION WILL BE ALLOWED BECAUSE OF THIS WORK.

REVISIONS	
REDRAWN	2-15-89
REVISED	8-15-94
CHECKED	6-3-99
RESIZED	5-7-08

STD. 9-16

FILE NAME =	USER NAME = \$USER\$	DESIGNED -	REVISED -
ct:\pw\work\p\dot\adamson\d0381096\7841	-sht-plan.dgn	DRAWN -	REVISED -
	PLOT SCALE = 100.0000' / in.	CHECKED -	REVISED -
#MODELNAME#	PLOT DATE = 12/9/2014	DATE -	REVISED -

**STATE OF ILLINOIS
DEPARTMENT OF TRANSPORTATION**

DISTRICT STANDARDS

SCALE: SHEET OF SHEETS STA. TO STA.

F.A.S. RTE.	SECTION	COUNTY	TOTAL SHEETS	SHEET NO.
1911	11B-3	UNION	19	18
CONTRACT NO. 78411				
ILLINOIS FED. AID PROJECT				

RURAL SIDE APPROACH DETAILS

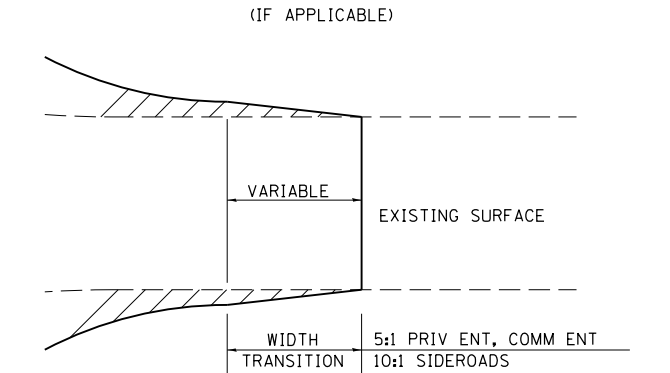
PRIVATE AND COMMERCIAL ENTRANCES

SIDEROADS

SIDEROAD DIMENSIONS (MIN.)

ADT	A (FT)	B (FT)
0 TO 250	18'	2'
250 TO 400	20'	2'
GREATER THAN 400	22'	4'

WIDTH TRANSITION DETAIL TO EXISTING

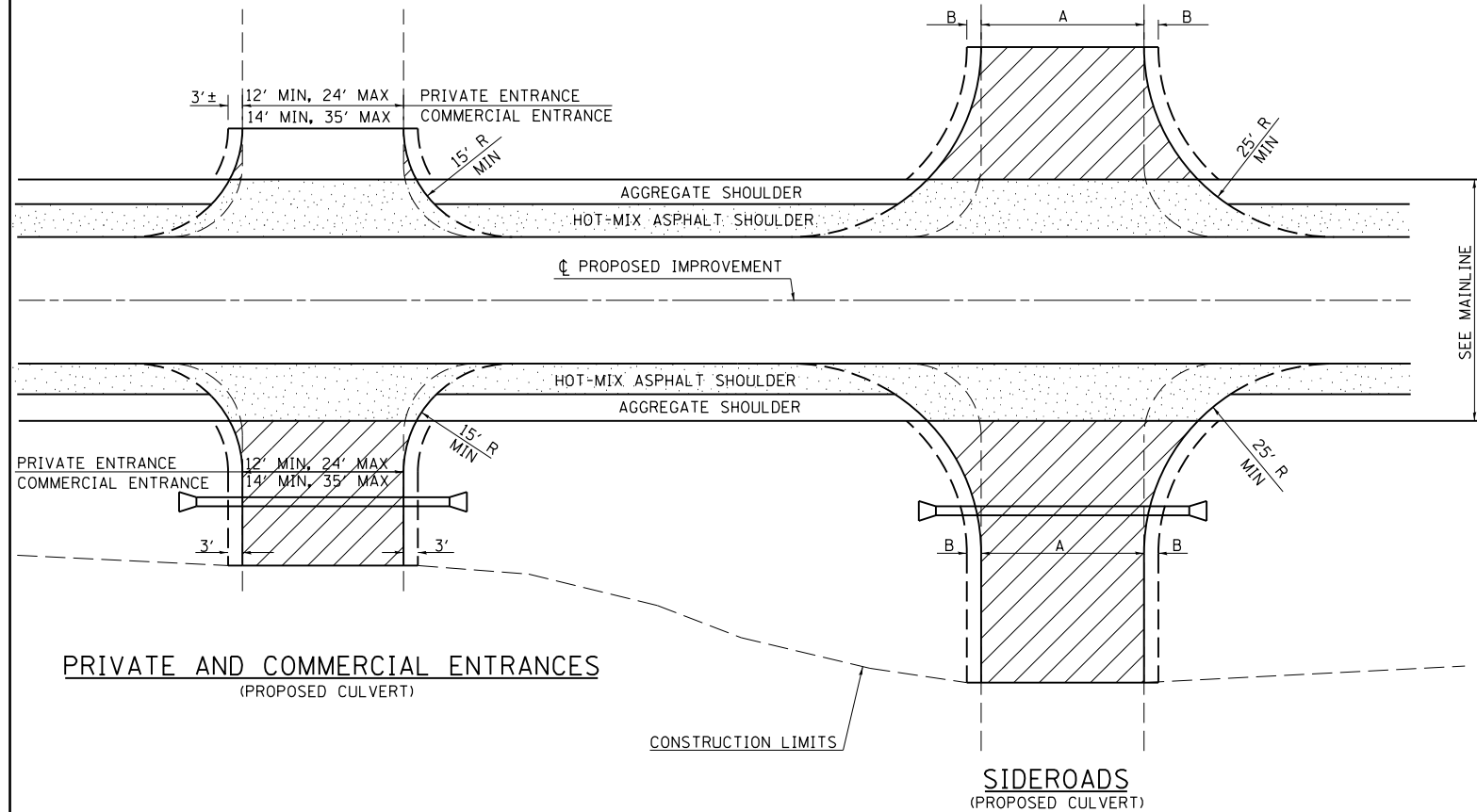
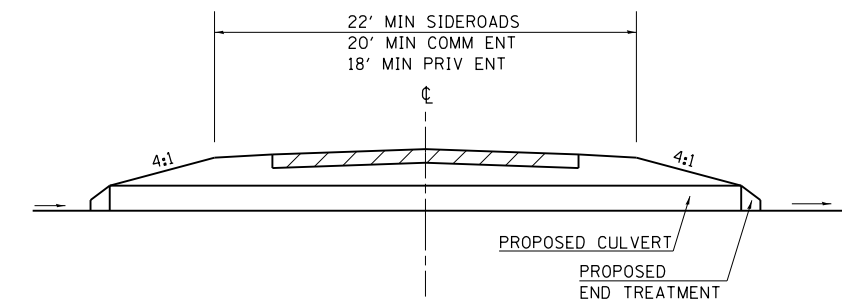


FIELD ENTRANCE TREATMENT

CONSTRUCT MAINLINE HOT-MIX ASPHALT AND AGGREGATE SHOULDERS THROUGH FIELD ENTRANCES.

IF A PIPE IS REQUIRED, PROVIDE A 22' WIDE EARTH EMBANKMENT WITH 15' RADII AT THE INTERSECTION.

DETAIL FOR CALCULATING CULVERT LENGTH



LEGEND

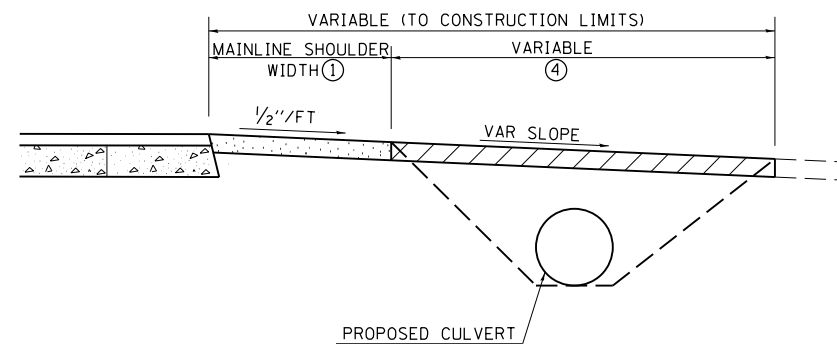
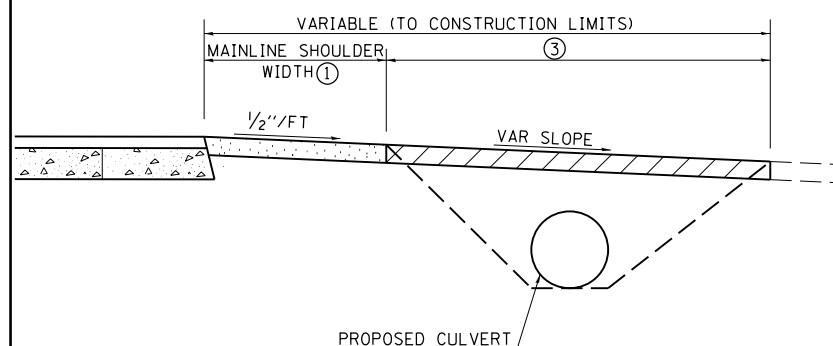
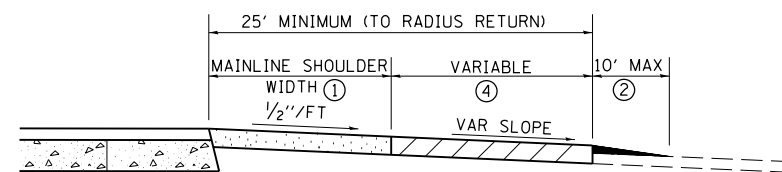
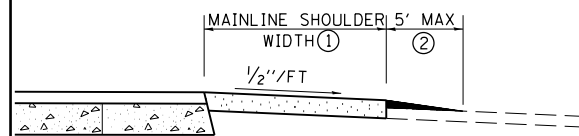
- CONSTRUCT HOT-MIX ASPHALT SHOULDER "FULL SHOULDER WIDTH" THROUGH ENTRANCE/INTERSECTION UNLESS OTHERWISE SHOWN ON THE PLANS OR AS DIRECTED BY THE ENGINEER.
- IF REQUIRED, AGGREGATE TAPER FOR EXISTING GRAVEL SURFACE; HOT-MIX ASPHALT TAPER FOR EXISTING HIGHER TYPE SURFACES.
- 6" AGGREGATE SURFACE COURSE FOR EXISTING GRAVEL SURFACE; 2" HOT-MIX ASPHALT RESURFACING ON 4" AGGREGATE BASE COURSE FOR EXISTING HOT-MIX ASPHALT SURFACE; PCC DRIVEWAY PAVEMENT (6" - PE; 7" - CE) FOR EXISTING CONCRETE SURFACE.
- 3" MINIMUM HOT-MIX ASPHALT RESURFACING ON 8" MINIMUM AGGREGATE BASE COURSE FOR EXISTING GRAVEL SURFACE OR OIL & CHIP SURFACE; MATCH EXISTING FOR EXISTING HIGHER TYPE SURFACES.

GENERAL NOTES

- ENTRANCE LOCATIONS ARE TO COMPLY WITH IDOT'S POLICY "ACCESS TO STATE HIGHWAYS".
- IN GENERAL, RELOCATED PRIVATE ENTRANCES ARE TO HAVE A 16' WIDE SURFACE WITH 3' WIDE SHOULDERS (22' WIDE EMBANKMENT).
- SEE PLANS FOR PROPOSED PROFILE GRADES AT ENTRANCES/SIDEROADS. THE DESIRABLE MAXIMUM PROFILE GRADE FOR ENTRANCES ARE 12% FOR PE; 10% FOR CE.
- ENTRANCE PIPE CULVERTS ARE TO BE A MINIMUM 15" DIAMETER AND NORMALLY REPLACED IN KIND; SIDEROAD PIPE CULVERTS ARE GENERALLY TO BE CONCRETE (18" MINIMUM DIAMETER).
- THE INTERSECTION RADII OF SIDEROADS CONSTRUCTED TO FULL POLICY STANDARDS SHOULD COMPLY WITH THAT NOTED IN THE BUREAU OF LOCAL ROADS ADMINISTRATIVE POLICIES MANUAL (5-8-13).

PRIVATE AND COMMERCIAL ENTRANCES

SIDEROADS



REVISIONS	
DRAWN	3-15-91
REVISED	10-02-91
REVISED	5-15-92
REVISED	1-20-00
REVISED	01-11-07
REVISED	5-7-08
REVISED	5-17-13

STD. 9-83