

STATE OF ILLINOIS  
DEPARTMENT OF TRANSPORTATION  
DIVISION OF HIGHWAYS

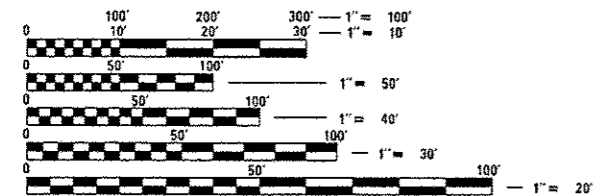
**PROPOSED  
HIGHWAY PLANS**

VARIOUS ROUTES  
SECTION 2014-0871 PROJ. NO. ACHSIP-000V(012)  
SMART TRAFFIC MONITORING SYSTEM  
IN VARIOUS LOCATIONS  
VARIOUS COUNTIES

C-91-150-15

**INDEX OF SHEETS**

- 1-COVER SHEET
- 2-GENERAL NOTES/STANDARDS
- 3-SUMMARY OF QUANTITIES
- 4-DETAIL SHEET

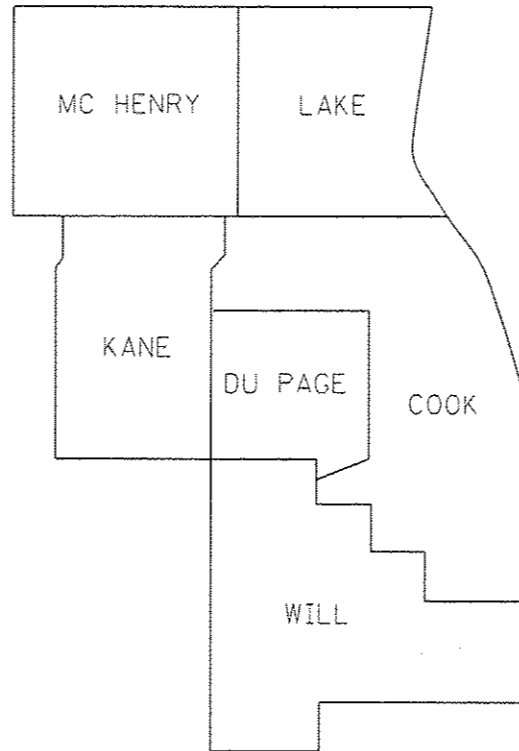


FULL SIZE PLANS HAVE BEEN PREPARED USING STANDARD ENGINEERING SCALES. REDUCED SIZED PLANS WILL NOT CONFORM TO STANDARD SCALES. IN MAKING MEASUREMENTS ON REDUCED PLANS, THE ABOVE SCALES MAY BE USED.

J.U.L.I.E.  
JOINT UTILITY LOCATION INFORMATION FOR EXCAVATION  
1-800-892-0123  
OR 811

PROJECT ENGINEER: PAUL LORTON  
PROJECT MANAGER: HUSSAIN MESYEF

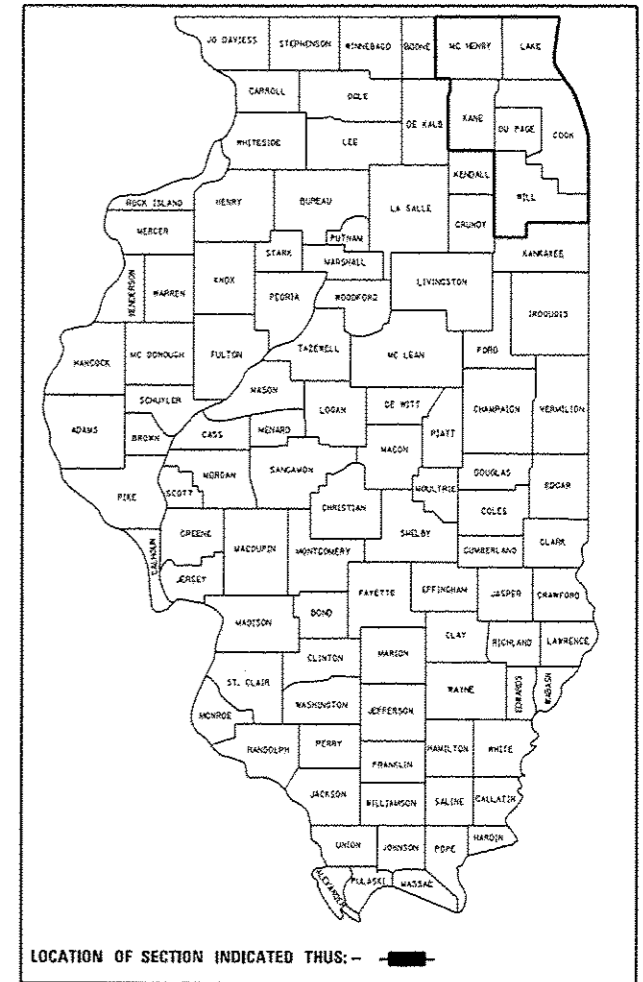
CONTRACT NO. 62A35



\*NOTE:  
WORK CAN BE LOCATED IN  
ANY COUNTIES WITHIN  
DISTRICT 1, REGION 1.

F.A. RTE.	SECTION	COUNTY	TOTAL SHEETS	SHEET NO.
VAR	2014-0871	VARIOUS	4	1
		ILLINOIS	CONTRACT NO. 62A35	

D-91-150-15



STATE OF ILLINOIS  
DEPARTMENT OF TRANSPORTATION  
DIVISION OF HIGHWAYS

SUBMITTED NOV 20 14 20 14  
*John F. ...*  
DEPUTY DIRECTOR OF HIGHWAYS, REGION ENGINEER

JAN 30 15 20 15  
*John D. Baranzelli* PE  
ENGINEER OF DESIGN AND ENVIRONMENT

JAN 30 15 20 15  
*Omer Osman* PE  
DIRECTOR OF HIGHWAYS, CHIEF ENGINEER

PRINTED BY THE AUTHORITY  
OF THE STATE OF ILLINOIS

STANDARDS

NUMBERS

701101-04  
701901-04  
701426-07

DESCRIPTIONS

OFF ROAD OPERATIONS, MULTI-LANE, 15' TO 24" FROM PAVEMENT EDGE  
TRAFFIC CONTROL DEVICES  
LANE CLOSURE, MULTILANE INTERMITTENT OR MOVING OPER., FOR  
SPEEDS ≥ 45 MPH

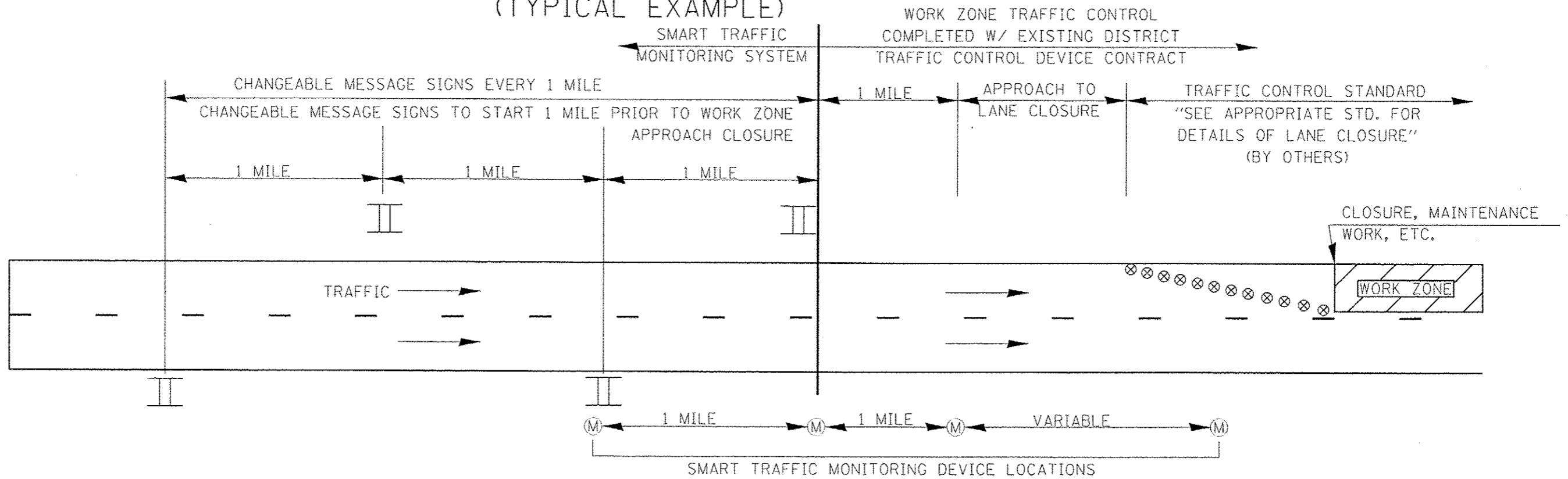
GENERAL NOTES

1. THE LOCATIONS OF THE DELIVERY, SETUP, MAINTENANCE, AND REMOVAL OF THE SMART TRAFFIC MONITORING SYSTEM SHALL BE DETERMINED BY THE DISTRICT 1 TRAFFIC MANAGEMENT CENTER (847-745-4602).
2. ANY CALL-OUT MAY BE CANCELLED AT THE DEPARTMENT'S DISCRETION.

FILE NAME *	USER NAME = gillesm	DESIGNED -	REVISED -	<b>STATE OF ILLINOIS DEPARTMENT OF TRANSPORTATION</b>	<b>GENERAL NOTES AND STANDARDS</b>	F.A. RTE.	SECTION	COUNTY	TOTAL SHEETS	SHEET NO.
S:\GEN\WPDOCS\Tech\Unit\Projects\CADD\07067\ht-pin.dgn	DRAWN -	REVISED -	VAR			2014-0871	VARIOUS	2		
PLOT SCALE = 100.0000 / in.	CHECKED -	REVISED -	CONTRACT NO. 62A35							
PLOT DATE = 11/3/2014	DATE -	REVISED -	SCALE:			SHEET NO. OF SHEETS	STA. TO STA.	FED. ROAD DIST. NO. ILLINOIS FED. AID PROJECT		



# SMART TRAFFIC MONITORING SYSTEM (CALL-OUT) (TYPICAL EXAMPLE)



**\*NOTES:**

- ① ACTUAL LOCATION OF SMART MONITORING DEVICES SHALL BE BASED ON MANUFACTURER'S SPECIFICATIONS AND RECOMMENDATIONS ALONG WITH THE SPECIAL PROVISIONS AND AS DIRECTED BY THE ENGINEER.
- ② MODIFICATIONS MAY BE NECESSARY TO ACCOMODATE SPECIFIC CLOSURES. ALL CHANGES WILL BE APPROVED BY THE ENGINEER.

LEGEND	
II	CHANGEABLE MESSAGE SIGN LOCATIONS
(M)	SMART TRAFFIC MONITORING DEVICE LOCATION
X	DRUM/BARRICADES PER APP. STANDARD (BY OTHERS)

FILE NAME =	USER NAME = gillettem	DESIGNED -	REVISED -	<b>STATE OF ILLINOIS DEPARTMENT OF TRANSPORTATION</b>	<b>SMART TRAFFIC MONITORING SYSTEM (CALL-OUT) (TYPICAL EXAMPLE)</b>	VAR. RTE.	SECTION	COUNTY	TOTAL SHEETS	SHEET NO.	
S:\GEN\MPDOCS\Tech\Units\Projects\CADD\376\67\ht-pln.dgn		DRAWN -	REVISED -			VAR.	2014-0871	VARIOUS		4	
PLOT SCALE = 1/8" = 1' / in.		CHECKED -	REVISED -			SCALE:		SHEET NO. OF SHEETS		STA. TO STA.	FED. ROAD DIST. NO. [ILLINOIS] FED. AID PROJECT
PLOT DATE = 11/3/2014		DATE -	REVISED -								CONTRACT NO. 62A35