



**GENERAL NOTES**

PLAN DIMENSIONS AND DETAILS RELATIVE TO EXISTING PLANS ARE SUBJECT TO NOMINAL CONSTRUCTION VARIATIONS. THE CONTRACTOR SHALL FIELD VERIFY EXISTING DIMENSIONS AND DETAILS AFFECTING NEW CONSTRUCTION AND MAKE NECESSARY APPROVED ADJUSTMENTS PRIOR TO CONSTRUCTION OR ORDERING OF MATERIALS. SUCH VARIATIONS SHALL NOT BE CAUSE FOR ADDITIONAL COMPENSATION FOR A CHANGE IN SCOPE OF WORK; HOWEVER, THE CONTRACTOR WILL BE PAID FOR THE QUANTITY ACTUALLY FURNISHED AT THE UNIT PRICE BID FOR THE WORK.

FOR STABILIZATION, ALL TYPE III BARRICADES WILL REQUIRE A MINIMUM OF FOUR SAND BAGS PER BARRICADE.

ALL EXCAVATED MATERIAL, WHICH INCLUDES DIGGING OR GRADING OF ANY SOIL OR FILL MATERIAL, WITH THE EXCEPTION OF AGGREGATE FILLS, MUST BE INCORPORATED WITHIN THE IDOT RIGHT OF WAY DUE TO ENVIRONMENTAL DOCUMENTATION REQUIREMENTS.

ANY REFERENCE TO A STANDARD IN THESE PLANS SHALL BE INTERPRETED TO MEAN THE EDITION AS INDICATED BY THE SUBNUMBER SHOWN IN THE LIST OF STANDARDS OR THE COPY INCLUDED IN THESE PLANS.

THE CONTRACTOR SHALL CONTACT JULIE AT LEAST 48 HOURS PRIOR TO EXCAVATION TO DETERMINE WHICH UTILITIES ARE IN THE AREA.

**COMMITMENTS**

STATE OF ILLINOIS  
DEPARTMENT OF TRANSPORTATION  
DISTRICT THREE

PREPARED BY: *D. Benoit*  
DISTRICT STUDIES & PLANS ENGINEER

DATE: December 12, 2014

EXAMINED BY: *Heidi Gray*  
DISTRICT CONSTRUCTION ENGINEER

*Wayne Phillips*  
DISTRICT MATERIALS ENGINEER

*Russell Chubb*  
DISTRICT OPERATIONS ENGINEER

FILE NAME *	USER NAME * woodshankr1	DESIGNED <i>ZJL</i>	REVISED -	<b>STATE OF ILLINOIS DEPARTMENT OF TRANSPORTATION</b>	<b>GENERAL NOTES</b>	F.A.P. RTE.	SECTION	COUNTY	TOTAL SHEETS	SHEET NO.
01\pwork\pvidot\woodshankr1\0398322\0368E09\shl\detail.s.dgn	DRAWN <i>ZJL</i>	REVISED -	330			D3 PATCHING 2015-6	KANKAKEE	7	2	
PLOT SCALE * 1/8"=1'-0"	CHECKED <i>RLW</i>	REVISED -	CONTRACT NO. 66E09							
PLOT DATE * 12/6/2014	DATE <i>8/13/14</i>	REVISED -	SCALE:			SHEET NO. 1 OF 1 SHEETS	STA. TO STA.	ILLINOIS FED. AID PROJECT		

CONSTR. CODE  
CONT. MAINT.  
100% STATE

CODE NO.	ITEM	UNIT	TOTAL QUANTITY	ROADWAY
				0005 RURAL
44200565	CLASS A PATCHES, TYPE II, 11 INCH	SO YD	608	608
44213000	PATCHING REINFORCEMENT	SO YD	608	608
44213100	PAVEMENT FABRIC	SO YD	608	608
44213200	SAW CUTS	FOOT	4560	4560
67100100	MOBILIZATION	L SUM	1	1
70100315	TRAFFIC CONTROL AND PROTECTION, STANDARD 701422	EACH	1	1
70103815	TRAFFIC CONTROL SURVEILLANCE	CAL DA	15	15
78009004	MODIFIED URETHANE PAVEMENT MARKING - LINE 4"	FOOT	114048	114048
78009006	MODIFIED URETHANE PAVEMENT MARKING - LINE 6"	FOOT	14256	14256
Z0018911	DRILL AND GROUT #6 TIE BARS	EACH	1672	1672
Z0030850	TEMPORARY INFORMATION SIGNING	SO FT	21	21

•SPECIALITY ITEMS

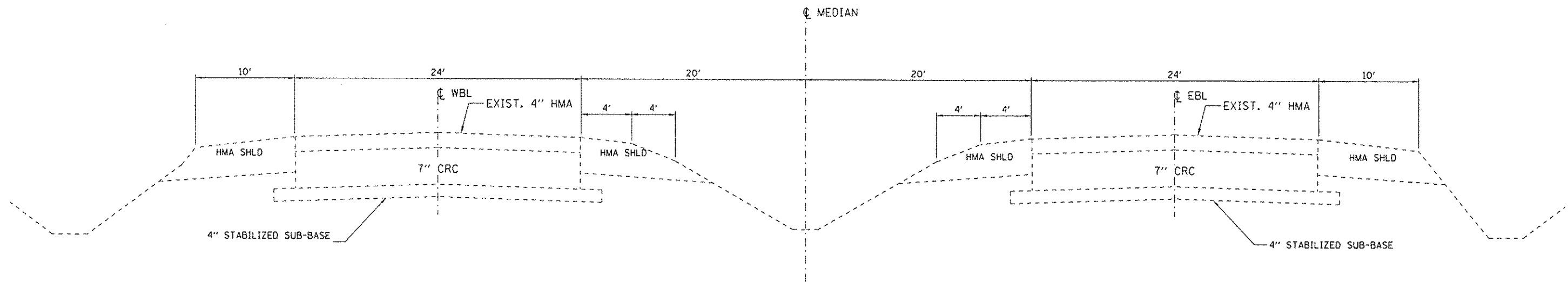
FILE NAME :	USER NAME :	DESIGNED :	REVISED :
c:\pwwork\pilot\woodshankr\1\0398322	woodshankr	ZJL	-
		DRAWN :	REVISED :
		ZJL	-
		CHECKED :	REVISED :
		RLW	-
		DATE :	REVISED :
		B/13/14	-

STATE OF ILLINOIS  
DEPARTMENT OF TRANSPORTATION

SUMMARY OF QUANTITIES

SCALE: SHEET NO. 1 OF 1 SHEETS STA. TO STA.

F.A.P. RTE.	SECTION	COUNTY	TOTAL SHEETS	SHEET NO.
330	D3 PATCHING 2015-6	KANKAKEE	7	3
ILLINOIS FED. AID PROJECT			CONTRACT NO. 66E09	



**EXISTING TYPICAL SECTION**

FILE NAME : c:\pw\work\p10101\woodshankr\1\0338322\	USER NAME : woodshankr1	DESIGNED : ZJL	REVISED : -	<b>STATE OF ILLINOIS DEPARTMENT OF TRANSPORTATION</b>	<b>TYPICAL SECTIONS</b>			F.A.P. RTE. 330	SECTION D3 PATCHING 2015-6	COUNTY KANKAKEE	TOTAL SHEETS 7	SHEET NO. 4
	PLOT SCALE : 100.0000 1" = 10'	DRAWN : ZJL	REVISED : -		SCALE:	SHEET NO. 1 OF 1 SHEETS	STA.	TO STA.	CONTRACT NO. 66E09			
	PLOT DATE : 12/6/2014	CHECKED : RLW	REVISED : -		ILLINOIS FED. AID PROJECT							
		DATE : 8/13/14	REVISED : -									

**SCHEDULES - PATCHING  
EASTBOUND LANES**

LOCATION BY MILE POST	PASS LANE PATCH LENGTH	DRIVE LANE PATCH LENGTH	EASTBOUND PASSING LANE					EASTBOUND DRIVING LANE				
			CLASS A TYPE II	PATCH REINF.	SAW CUTS	PAV'T FABRIC	DRILL & GROUT #6 TIE BARS	CLASS A TYPE II	PATCH REINF.	SAW CUTS	PAV'T FABRIC	DRILL & GROUT #6 TIE BARS
			SQ YD	SQ YD	FOOT	SQ YD	EACH	SQ YD	SQ YD	FOOT	SQ YD	EACH
0.070	6	6	8	8	60	8	22	8	8	60	8	22
0.080	6	6	8	8	60	8	22	8	8	60	8	22
0.100		6						8	8	60	8	22
0.120		6						8	8	60	8	22
0.125		6						8	8	60	8	22
0.400	6	6	8	8	60	8	22	8	8	60	8	22
0.420		6						8	8	60	8	22
0.435		6						8	8	60	8	22
0.580	6		8	8	60	8	22					
0.600	6		8	8	60	8	22					
0.680	6	6	8	8	60	8	22	8	8	60	8	22
0.710	6	6	8	8	60	8	22	8	8	60	8	22
2.100		6						8	8	60	8	22
2.180		6						8	8	60	8	22
2.700		6						8	8	60	8	22
2.800		6						8	8	60	8	22
2.810		6						8	8	60	8	22
4.100	6	6	8	8	60	8	22	8	8	60	8	22
4.160	6	6	8	8	60	8	22	8	8	60	8	22
4.500	6	6	8	8	60	8	22	8	8	60	8	22
4.530	6	6	8	8	60	8	22	8	8	60	8	22
4.610	6	6	8	8	60	8	22	8	8	60	8	22
4.690	6	6	8	8	60	8	22	8	8	60	8	22
4.710	6	6	8	8	60	8	22	8	8	60	8	22
4.800	6	6	8	8	60	8	22	8	8	60	8	22
EASTBOUND SUBTOTALS			120	120	900	120	330	184	184	1380	184	506

**SCHEDULE - PAVEMENT MARKING**

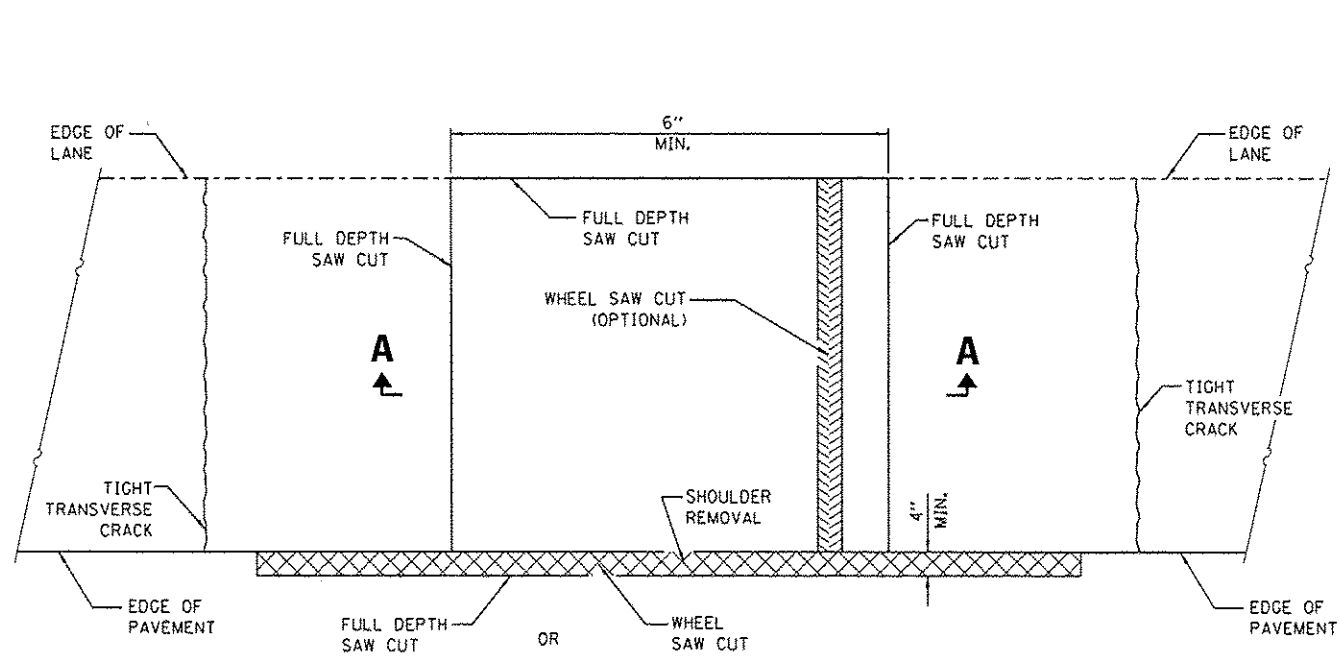
EASTBOUND LANES			MODIFIED URETHANE PAVEMENT MARKING LINE 4"		MODIFIED URETHANE PAVEMENT MARKING LINE 6"	
LOCATION		LOG MILE	FEET	FEET	FEET	
			YELLOW	WHITE	WHITE	
0.00	5.40		28512	28512	7128	
SUBTOTAL			57024		7128	

**SCHEDULES - PATCHING  
WESTBOUND LANES**

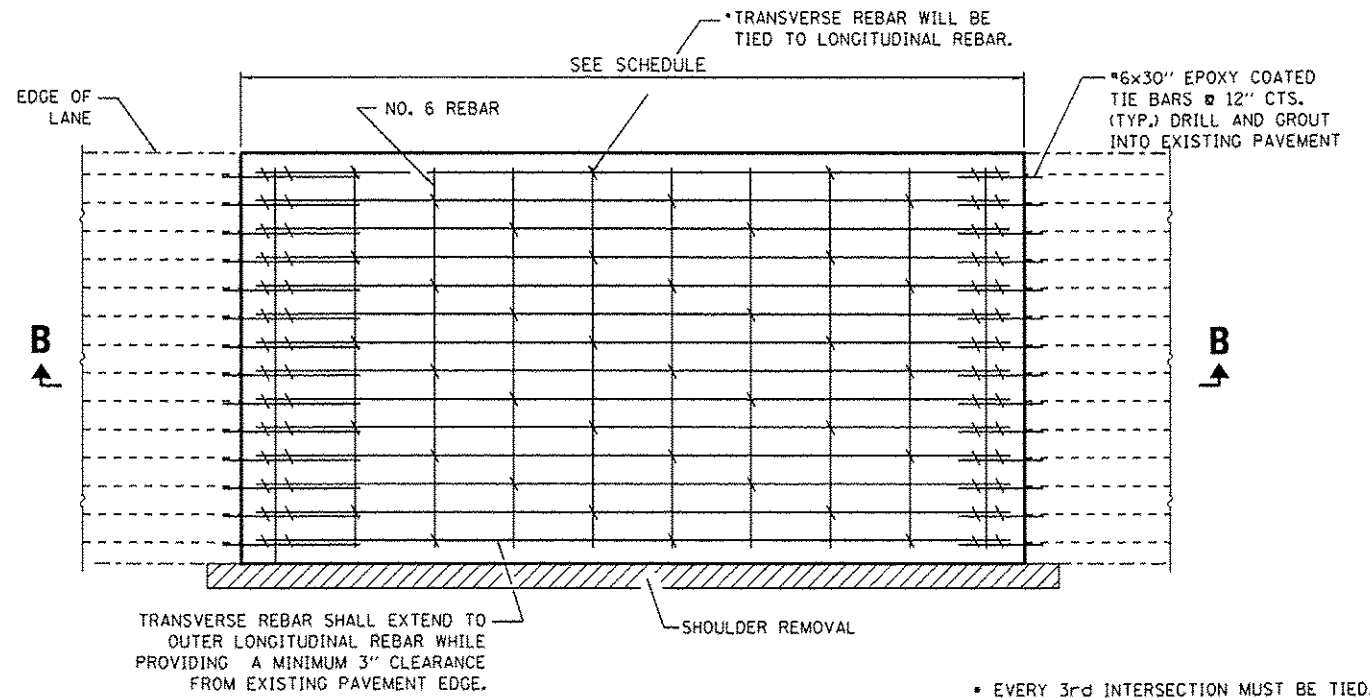
LOCATION BY MILE POST	PASS LANE PATCH LENGTH	DRIVE LANE PATCH LENGTH	PASSING LANE					DRIVING LANE				
			CLASS A TYPE II	PATCH REINF.	SAW CUTS	PAV'T FABRIC	DRILL & GROUT #6 TIE BARS	CLASS A TYPE II	PATCH REINF.	SAW CUTS	PAV'T FABRIC	DRILL & GROUT #6 TIE BARS
			SQ YD	SQ YD	FOOT	SQ YD	EACH	SQ YD	SQ YD	FOOT	SQ YD	EACH
0.010	6		8	8	60	8	22					
0.120	6		8	8	60	8	22					
0.200	6		8	8	60	8	22					
0.220	6	6	8	8	60	8	22					
0.510	6	6	8	8	60	8	22	8	8	60	8	22
0.520		6						8	8	60	8	22
0.530		6						8	8	60	8	22
0.620	6	6	8	8	60	8	22	8	8	60	8	22
0.690		6						8	8	60	8	22
0.720	6	6	8	8	60	8	22	8	8	60	8	22
1.020	6	6	8	8	60	8	22	8	8	60	8	22
1.300	6	6	8	8	60	8	22	8	8	60	8	22
1.610	6	6	8	8	60	8	22	8	8	60	8	22
1.640		6						8	8	60	8	22
2.010		6						8	8	60	8	22
2.300		6						8	8	60	8	22
2.480		6						8	8	60	8	22
3.090	6	6	8	8	60	8	22	8	8	60	8	22
3.120	6	6	8	8	60	8	22	8	8	60	8	22
3.900	6		8	8	60	8	22	8	8	60	8	22
3.950	6	6	8	8	60	8	22	8	8	60	8	22
4.000	6	6	8	8	60	8	22	8	8	60	8	22
4.090		6						8	8	60	8	22
4.190	6	6	8	8	60	8	22	8	8	60	8	22
4.210	6	6	8	8	60	8	22	8	8	60	8	22
WESTBOUND SUBTOTALS			136	136	1020	136	374	168	168	1260	168	462

**SCHEDULE - PAVEMENT MARKING**

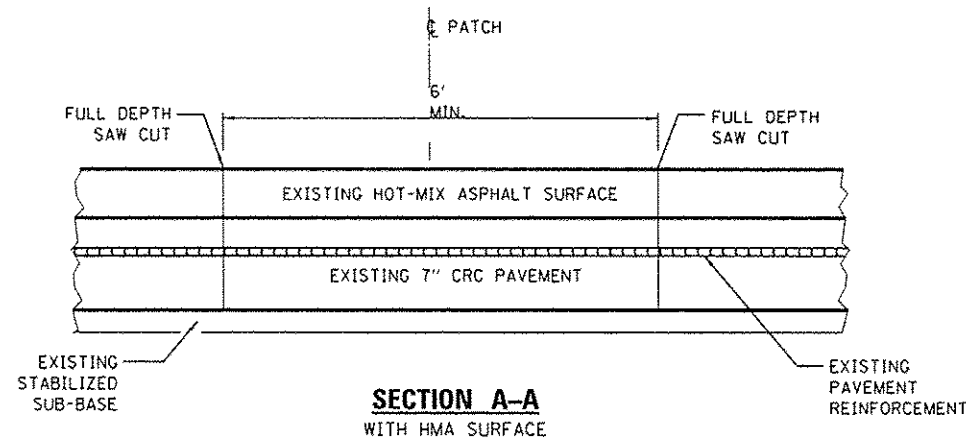
WESTBOUND LANES			MODIFIED URETHANE PAVEMENT MARKING LINE 4"		MODIFIED URETHANE PAVEMENT MARKING LINE 6"	
LOCATION		LOG MILE	FEET	FEET	FEET	
			YELLOW	WHITE	WHITE	
0.00	5.40		28512	28512	7128	
SUBTOTAL			57024		7128	



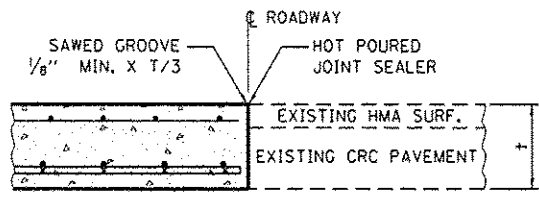
**PAVEMENT SAWING DETAIL**  
(HMA SHOULDER)



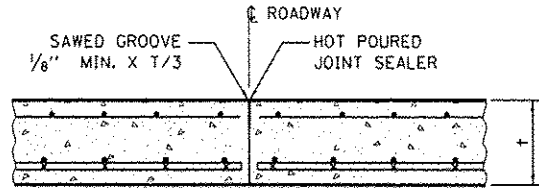
**PAVEMENT REINFORCEMENT DETAIL**



**SECTION A-A**  
WITH HMA SURFACE

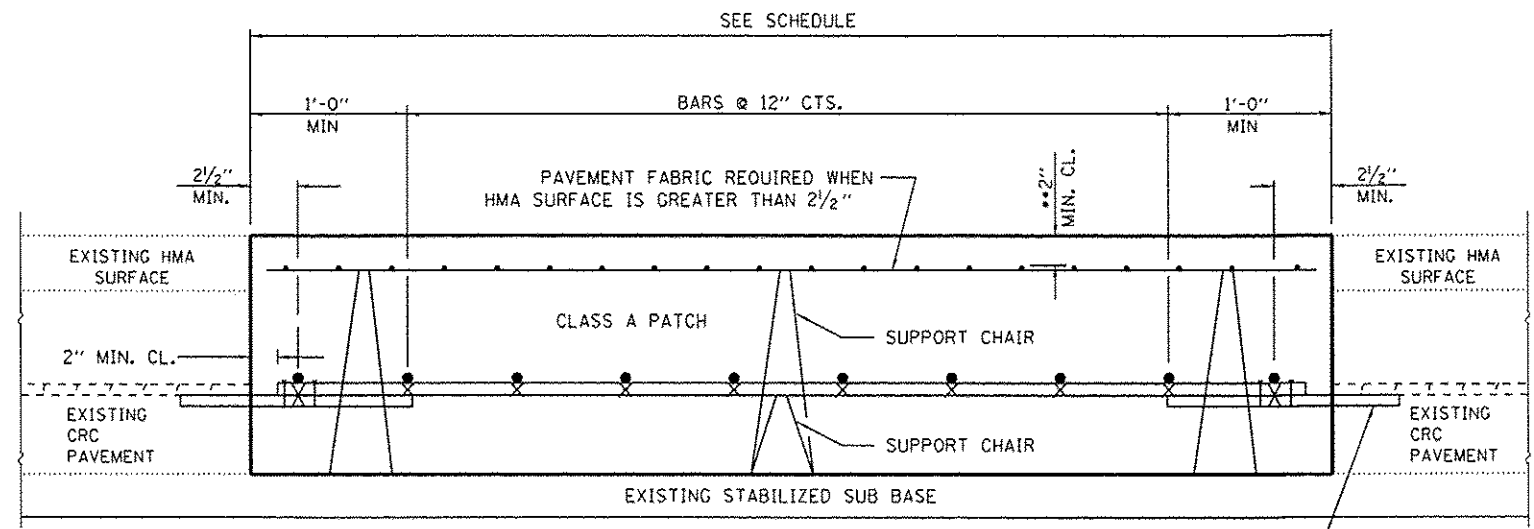


**CLASS A PATCH ADJACENT TO EXISTING PAVEMENT**



**CLASS A PATCH ADJACENT TO CLASS A PATCH**

**LONGITUDINAL SAWED JOINT**



**SECTION B-B**  
WITH HMA SURFACE

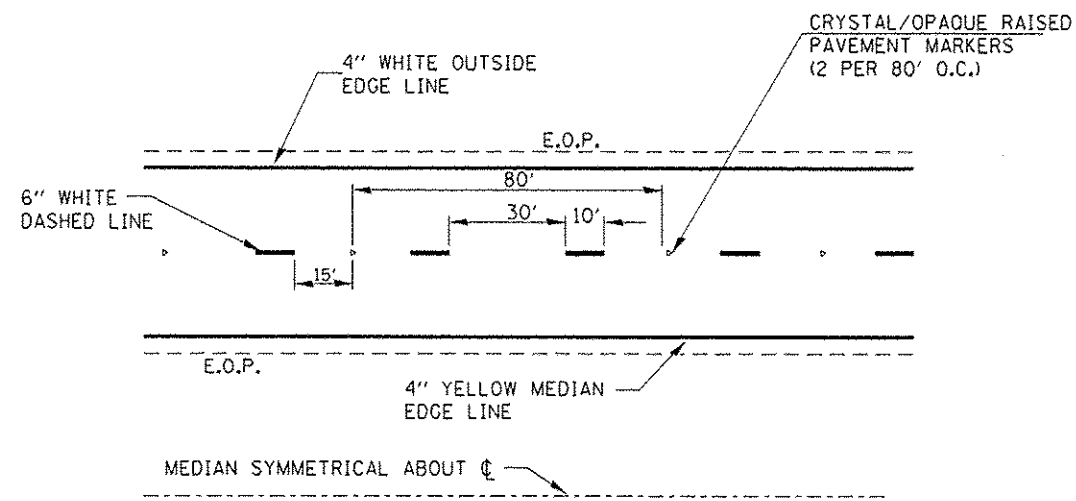
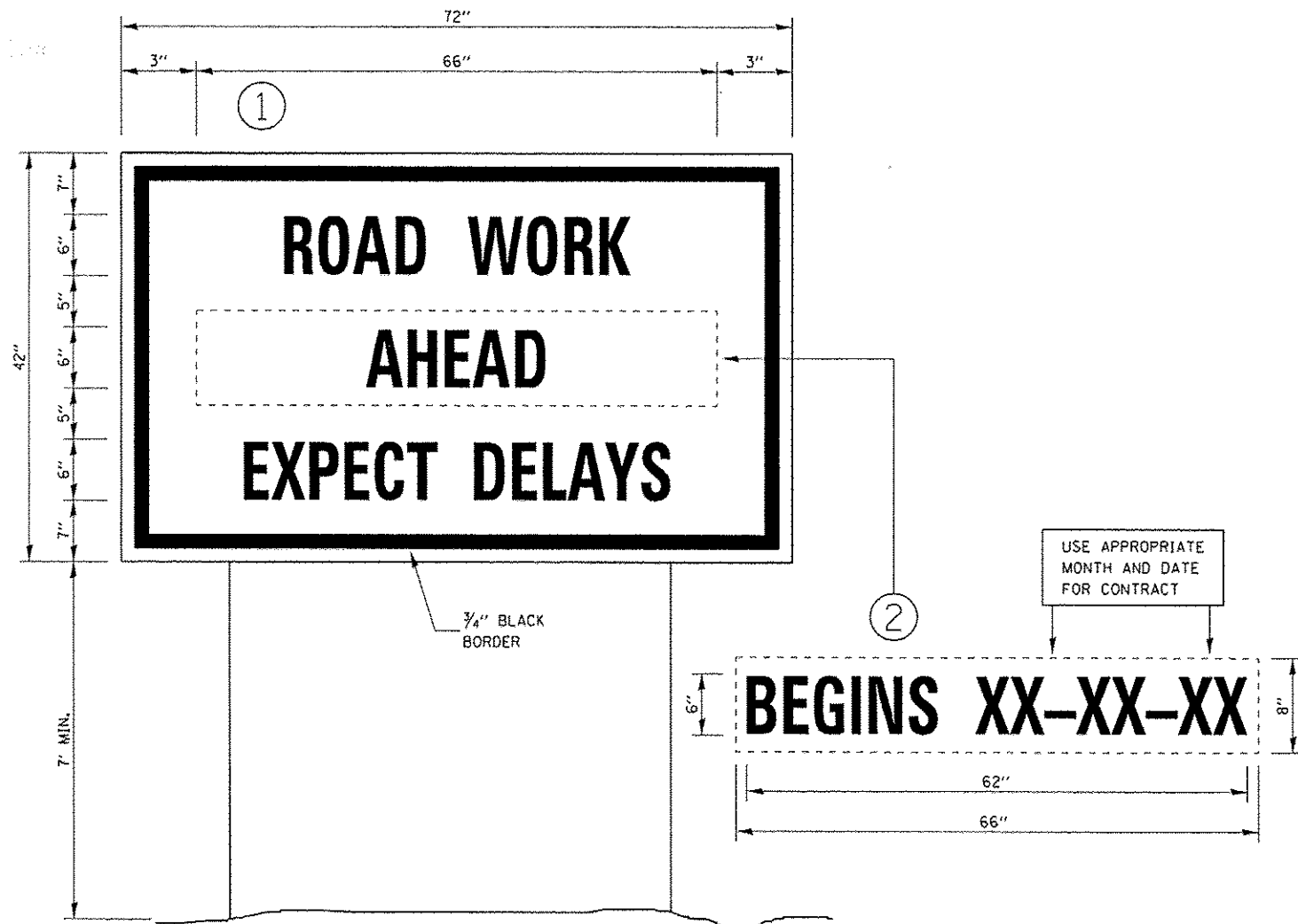
ENGLISH (Inches)						
BAR SIZE	PAVEMENT THICKNESS	(A) (APPROX. SPACING)	(B)	(C)	(D)	
#6	7 1/4 thru 8 1/2	18 spaces (19 bars) @ 7 5/8	3 1/2	3	22	
#6	8 3/4 thru 9 1/2	20 spaces (21 bars) @ 6 7/8	3 1/2	3	22	
#6	9 3/4 thru 10 1/2	22 spaces (23 bars) @ 6 1/4	3 1/2	3	22	
#6	10 3/4 thru 11 1/2	24 spaces (25 bars) @ 5 3/4	3 1/2	3	22	
#6	11 3/4 thru 12 1/2	27 spaces (28 bars) @ 5 5/8	3 1/2	3	22	
#7	9 3/4 thru 10 1/2	16 spaces (17 bars) @ 8 5/8	3 1/2	3	26	
#7	10 3/4 thru 11 1/2	18 spaces (19 bars) @ 7 5/8	3 1/2	3	26	
#7	11 3/4 thru 12 1/2	19 spaces (20 bars) @ 7 1/4	3 1/2	3	26	
#7	12 3/4 thru 13 1/2	21 spaces (22 bars) @ 6 1/2	3 1/2	3	26	
#7	13 3/4 thru 14 1/2	23 spaces (24 bars) @ 6	3 1/2	3	26	
#7	14 3/4 thru 15 1/2	24 spaces (25 bars) @ 5 3/4	3 1/2	3	26	
#7	15 3/4 thru 16 1/2	26 spaces (27 bars) @ 5 1/4	3 1/2	3	26	

\*6x30" EPOXY COATED TIE BARS @ 12" CTS. (TYP.) DRILL AND GROUT INTO EXISTING PAVEMENT

**GENERAL NOTES**

JOINT SEALING: IN CLASS A PATCHES, ALL CENTERLINE JOINTS AND LONGITUDINAL JOINTS ADJACENT TO PORTLAND CEMENT CONCRETE SHOULDERS SHALL BE SEALED ACCORDING TO ARTICLE 420.12 OF THE STANDARD SPECIFICATIONS AND STANDARD 420001.

SEE STANDARD 421001 FOR DETAILS OF PAVEMENT REINFORCEMENT.



**TYPICAL PAVEMENT MARKINGS**

**TEMPORARY INFORMATION SIGNING**

**NOTES:**

1. USE 6" D BLACK LETTERING ON FLOURESENT ORANGE BACKGROUND.
2. ERECT SIGNS AT LOCATIONS IN ADVANCE OF THE "ROAD CONSTRUCTION AHEAD" SIGNS AS DIRECTED BY THE ENGINEER.
3. ERECT SIGN ① WITH INSTALLED PANEL ② A MINIMUM OF ONE WEEK PRIOR TO THE START OF THE LANE CLOSURE.
4. REMOVE PANEL ② ON THAT DATE.
5. SEE SPECIAL PROVISION "TEMPORARY INFORMATION SIGNING" FOR ADDITIONAL INFORMATION.
6. WILL BE PAID FOR PER SQ FT AS "TEMPORARY INFORMATION SIGNING". EACH SIGN = 21 SQ FT AND THE DATE PANEL ② WILL NOT BE MEASURED SEPARATELY FOR PAYMENT.

FILE NAME : c:\pw\work\pvidet\woodshankr\1\0398322\366E09-ght-details.dgn	USER NAME : woodshankr	DESIGNED Z.JL	REVISED -	<b>STATE OF ILLINOIS DEPARTMENT OF TRANSPORTATION</b>	<b>MISCELLANEOUS DETAILS</b>			F.A.P. RTE.:	SECTION	COUNTY	TOTAL SHEETS	SHEET NO.
PLOT SCALE = 1/8" = 1' / in.	DRAWN Z.JL	CHECKED RLW	REVISED -					330	D3 PATCHING 2015-6	KANKAKEE	7	7
PLOT DATE = 12/6/2014	DATE 8/13/14	REVISED -	REVISED -		SCALE:	SHEET NO. 1 OF 1 SHEETS	STA.	TO STA.	CONTRACT NO. 66E09			
ILLINOIS FED. AID PROJECT												