

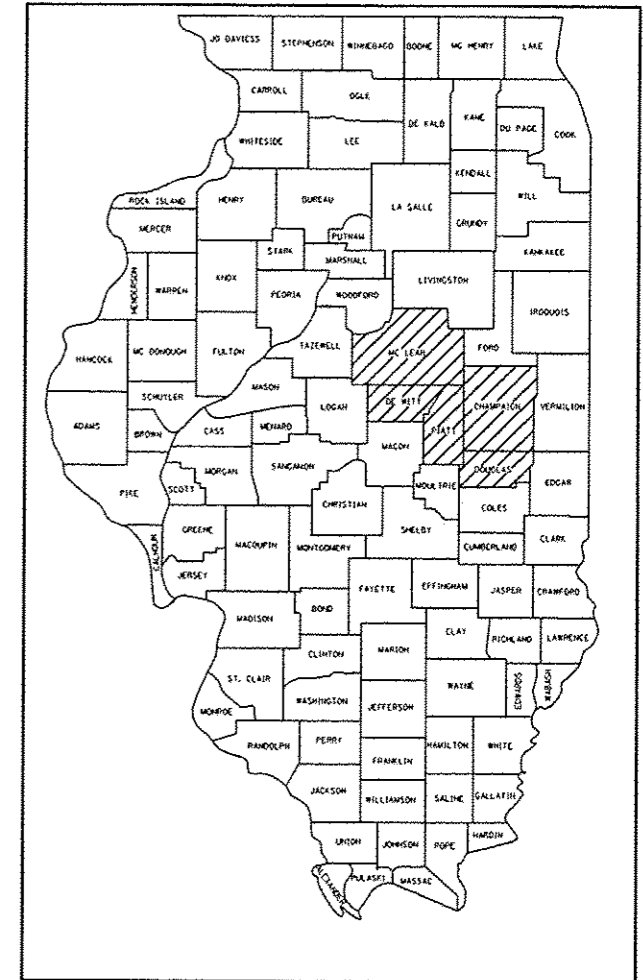
STATE OF ILLINOIS  
DEPARTMENT OF TRANSPORTATION  
DIVISION OF HIGHWAYS

**PROPOSED  
HIGHWAY PLANS**

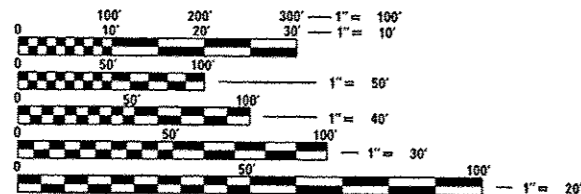
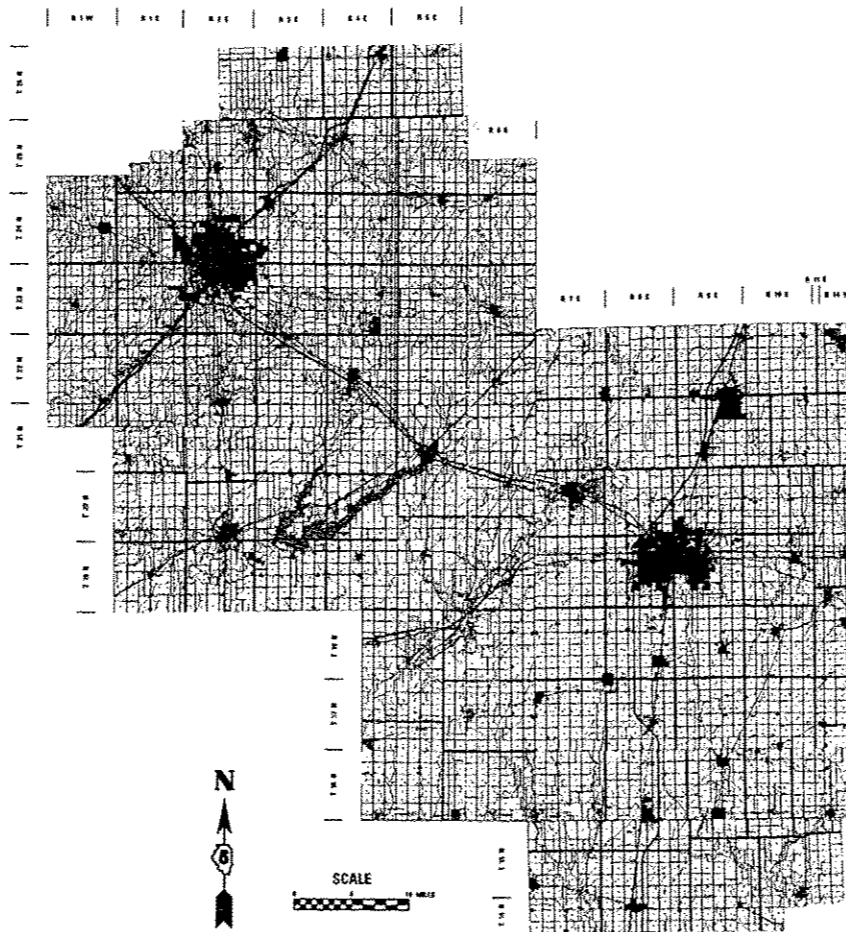
VARIOUS ROUTES  
SECTION D5 WEED SPRAYING 2015-1  
DISTRICT WIDE WEED SPRAYING  
VARIOUS COUNTIES

F.A.I. RTE.	SECTION	COUNTY	TOTAL SHEETS	SHEET NO.
VAR	D5 WEED SPRAYING 2015-1	VARIOUS	14	1
		ILLINOIS	CONTRACT NO. 70A83	

D-95-038-14



C-95-038-14



FULL SIZE PLANS HAVE BEEN PREPARED USING STANDARD ENGINEERING SCALES. REDUCED SIZED PLANS WILL NOT CONFORM TO STANDARD SCALES. IN MAKING MEASUREMENTS ON REDUCED PLANS, THE ABOVE SCALES MAY BE USED.

J.U.L.I.E.  
JOINT UTILITY LOCATION INFORMATION FOR EXCAVATION  
1-800-892-0123  
OR 811

PROJECT ENGINEER: JASON W. STULTS  
PROJECT MANAGER: RUSTIN B. KEYS  
PROJECT DESIGNER: DAVID F. JAYME  
PHONE NUMBER 217-465-4181  
CONTRACT NO. 70A83

GROSS LENGTH = 86.62 MILE  
NET LENGTH = 86.62 MILE

STATE OF ILLINOIS  
DEPARTMENT OF TRANSPORTATION  
DIVISION OF HIGHWAYS

SUBMITTED October 7, 2014  
Kenneth A. Bramett  
DEPUTY DIRECTOR OF HIGHWAYS, REGION THREE ENGINEER, A.E.

Jan 30, 2015  
John D. Baranzoli, P.E.  
ENGINEER OF DESIGN AND ENVIRONMENT

Jan 30, 2015  
Omur Osman, P.E.  
DIRECTOR OF HIGHWAYS, CHIEF ENGINEER

**PRINTED BY THE AUTHORITY  
OF THE STATE OF ILLINOIS**

## INDEX OF SHEETS

SHEET NO.	DESCRIPTION
1	COVER SHEET
2	INDEX OF SHEETS
2	LIST OF HIGHWAY STANDARDS
2	GENERAL NOTES
3	DETAILED LOCATION MAP - DEWITT AND MCLEAN COUNTIES
4	SUMMARY OF QUANTITIES
5-9	SCHEDULE OF QUANTITIES
10	HERBICIDE RESTRICTION MAP - RESTRICTED LOCATIONS
11	SUPPLEMENTAL LOCATION MAP - CHAMPAIGN, DOUGLAS, AND PIATT COUNTIES
12-14	SUPPLEMENTAL SCHEDULES

## GENERAL NOTES

G.N. - 100  
ENGLISH UNITS OF MEASUREMENT SHALL GOVERN OVER AND SUPERSEDE ANY METRIC UNITS SHOWN IN THIS CONTRACT. WHERE INCLUDED, METRIC UNITS ARE FOR INFORMATION ONLY.

G.N. - 100A  
ELECTRONIC FILES AND/OR ELECTRONIC SURVEY INFORMATION INCLUDING CADD FILES WILL NOT BE AVAILABLE TO THE CONTRACTOR.

G.N. - 107.12A  
RAILROAD PROTECTIVE LIABILITY INSURANCE AND RAILROAD FLAGGING ARE NOT INCLUDED IN THIS CONTRACT. ALL WEED SPRAYING OPERATIONS SHALL STOP 150 FEET EACH SIDE OF THE CENTERLINE OF RAILROAD TRACKS. THE CENTERLINE ON THE RAILROAD TRACKS SHALL BE DETERMINED IN THE FIELD BY THE ENGINEER.

G.N. - X032SP1  
AREAS ARE ESTIMATED AND IT IS KNOWN THAT NOT ALL AREAS WILL BE ACCESSIBLE AT THE TIME OF APPLICATION DUE TO WET CONDITIONS OR ADJACENT FIELD CROPS. IN ORDER TO ENSURE THAT ALL PLAN QUANTITIES ARE UTILIZED, SUPPLEMENTAL LOCATIONS ARE LISTED IN THE "SUPPLEMENTAL SCHEDULES" ON SHEETS 12-14. THESE LOCATIONS SHALL BE SPRAYED ONLY IF QUANTITIES REMAIN. THE ENGINEER SHALL APPROVE OF SPRAYING SUPPLEMENTAL LOCATIONS.

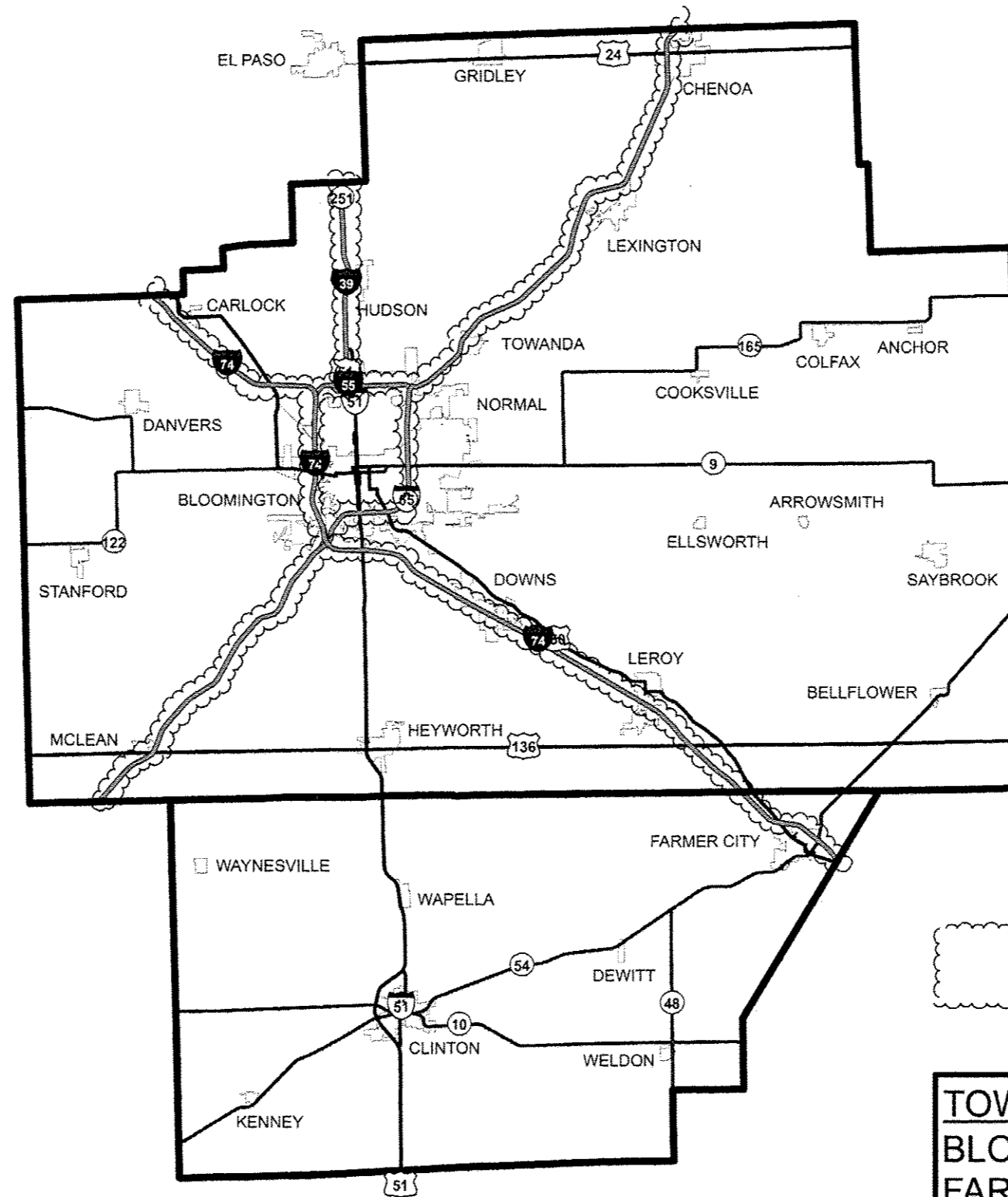
COMMITMENTS  
THERE ARE NO COMMITMENTS ON THIS PROJECT

## LIST OF HIGHWAY STANDARDS

STANDARD NO.	DESCRIPTION
000001-06	STANDARD SYMBOLS, ABBREVIATIONS AND PATTERNS
701101-04	OFF-RD OPERATIONS, MULTILANE, 15' (4.5 m) TO 24" (600 mm) FROM PAVEMENT EDGE
701106-02	OFF-RD OPERATIONS, MULTILANE, MORE THAN 15' (4.5 m) AWAY
701426-07	LANE CLOSURE, MULTILANE, INTERMITTANT OR MOVING OPER., FOR SPEEDS > 45 MPH
701901-04	TRAFFIC CONTROL DEVICES

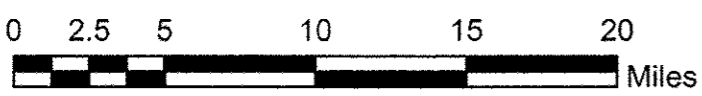
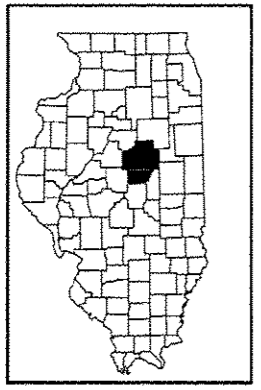
FILE NAME =	USER NAME = jaynedf	DESIGNED -	REVISED -	<b>STATE OF ILLINOIS DEPARTMENT OF TRANSPORTATION</b>	<b>INDEX OF SHEETS, LIST OF HIGHWAY STANDARDS, GENERAL NOTES</b>	F.A.I. RTE.	SECTION	COUNTY	TOTAL SHEETS	SHEET NO.
e:\pwwork\pwwork\jaynedf\08403808\0570887-sht-gennote.dgn	PLOT SCALE = 48,0000' / in.	DRAWN -	REVISED -			VAR	*	VARIOUS	14	2
#MODELNAME#	PLOT DATE = 10/7/2014	CHECKED -	REVISED -		SCALE:	SHEET	OF	SHEETS	STA.	TO STA.
		DATE -	REVISED -			*05 WEED SPRAYING 2015-1		CONTRACT NO. 70A83		
						ILLINOIS FED. AID PROJECT				

# DETAILED LOCATION MAP DEWITT & MCLEAN COUNTIES



WEED SPRAYING  
 LOCATION

**TOWNSHIPS:**  
 BLOOMINGTON, CARLOCK, DOWNS,  
 FARMER CITY, LE ROY, NORMAL



FILE NAME =	USER NAME = jaymedf	DESIGNED -	REVISED -	<b>STATE OF ILLINOIS DEPARTMENT OF TRANSPORTATION</b>	<b>DETAILED LOCATION MAP DEWITT AND MCLEAN COUNTIES</b>	F.A.I. RTE.	SECTION	COUNTY	TOTAL SHEETS	SHEET NO.	
al:\work\p\dat\jaymedf\04030808\05700003-shr-Loc_Maps.dgn		DRAWN -	REVISED -			VAR	*	VARIOUS	14	3	
PLOT SCALE = 40,0000 1/ in.		CHECKED -	REVISED -			*05 WEED SPRAYING 2015-1 CONTRACT NO. 70A83					
PLOT DATE = 8/28/2014		DATE -	REVISED -			ILLINOIS FED. AID PROJECT					
					SCALE:   SHEET OF SHEETS   STA. TO STA.						

## SUMMARY OF QUANTITIES

CODE NO.	ITEM	UNIT	TOTAL QUANTITY	CONSTRUCTION CODE	
				VARIOUS COUNTIES VARIOUS ROUTES WEED CONTROL 0031 RURAL 100% STATE	VARIOUS COUNTIES VARIOUS ROUTES WEED CONTROL 0031 URBAN 100% STATE
67100100	MOBILIZATION	L SUM	1	0.75	0.25
K0029636	ESCORT XP HERBICIDE	POUND	154	92.2	61.8
X0325947	MILESTONE VM	GALLON	115	68.8	46.2

3

FILE NAME =	USER NAME = jymead	DESIGNED -	REVISED -	<b>STATE OF ILLINOIS DEPARTMENT OF TRANSPORTATION</b>	<b>SUMMARY OF QUANTITIES</b>	F.A.J. RTE.	SECTION	COUNTY	TOTAL SHEETS	SHEET NO.			
o:\pwork\p1\dot\jymead\02403028\0576	003-ahs-500.dgn	DRAWN -	REVISED -		SCALE:	SHEET	OF	SHEETS	STA.	TO STA.	VARIOUS	14	4
	PLOT SCALE = 48,0000' / 1" =	CHECKED -	REVISED -								*05 WEED SPRAYING 2015-1	CONTRACT NO. 70A83	
#MODELNAME#	PLOT DATE = 8/28/2014	DATE -	REVISED -								ILLINOIS FED. AID PROJECT		

# SCHEDULE OF QUANTITIES

## MCLEAN COUNTY

K0029636

X0325947

ROUTE	LOCATION	STARTING LOCATION	ENDING LOCATION	ESTIMATED	ESCORT XP HERBICIDE	MILESTONE VM	URBAN / RURAL
				AREA	POUND	GALLON	
				ACRES	POUND	GALLON	
I - 39	NB EOS TO FENCE	WOODFORD/MCLEAN COUNTY LINE	IL CH 8 INTERCHANGE	22.2	1.4	1.0	RURAL
I - 39	SB EOS TO FENCE	WOODFORD/MCLEAN COUNTY LINE	IL CH 8 INTERCHANGE	22.2	1.4	1.0	RURAL
I - 39	NB EOS TO FENCE	IL CH 8 INTERCHANGE	IL CH 12 INTERCHANGE	47.27	3.0	2.2	RURAL
I - 39	SB EOS TO FENCE	IL CH 8 INTERCHANGE	IL CH 12 INTERCHANGE	47.27	3.0	2.2	RURAL
I - 39	NB EOS TO FENCE	IL CH 12 INTERCHANGE	BUSINESS 51 INTERCHANGE	25.93	1.6	1.2	RURAL
I - 39	SB EOS TO FENCE	IL CH 12 INTERCHANGE	BUSINESS 51 INTERCHANGE	25.93	1.6	1.2	RURAL
I - 39	NB EOS TO FENCE	BUSINESS 51 INTERCHANGE	I - 55 OFFRAMP TO I - 39	81.11	5.1	3.8	URBAN
I - 39	SB EOS TO FENCE	BUSINESS 51 INTERCHANGE	I - 55 OFFRAMP TO I - 39	81.11	5.1	3.8	URBAN
I - 55	NB EOS TO FENCE	LIVINGSTON/MCLEAN COUNTY LINE	IL CH 24 INTERCHANGE	28.37	1.8	1.3	RURAL
I - 55	SB EOS TO FENCE	LIVINGSTON/MCLEAN COUNTY LINE	IL CH 24 INTERCHANGE	28.37	1.8	1.3	RURAL
I - 55	NB EOS TO FENCE	IL CH 24 INTERCHANGE	IL CH 8 INTERCHANGE	135.33	8.5	6.3	RURAL
I - 55	SB EOS TO FENCE	IL CH 24 INTERCHANGE	IL CH 8 INTERCHANGE	135.33	8.5	6.3	RURAL
I - 55	NB EOS TO FENCE	IL CH 8 INTERCHANGE	IL CH 29 INTERCHANGE	115.26	7.2	5.4	RURAL
I - 55	SB EOS TO FENCE	IL CH 8 INTERCHANGE	IL CH 29 INTERCHANGE	115.26	7.2	5.4	RURAL
I - 55	NB EOS TO FENCE	IL CH 29 INTERCHANGE	VETERANS PARKWAY INTERCHANGE	68.94	4.3	3.2	URBAN
I - 55	SB EOS TO FENCE	IL CH 29 INTERCHANGE	VETERANS PARKWAY INTERCHANGE	68.94	4.3	3.2	URBAN
I - 55	NB EOS TO FENCE	VETERANS PARKWAY INTERCHANGE	N MAIN ST INTERCHANGE	34	2.1	1.6	URBAN
I - 55	SB EOS TO FENCE	VETERANS PARKWAY INTERCHANGE	N MAIN ST INTERCHANGE	34	2.1	1.6	URBAN
I - 55	NB EOS TO FENCE	N MAIN ST INTERCHANGE	I - 39 INTERCHANGE	6.55	0.4	0.3	URBAN
<b>ESTIMATED TOTALS</b>				<b>1123.37</b>	<b>70.4</b>	<b>52.3</b>	
<b>URBAN ESTIMATED TOTALS</b>				<b>374.65</b>	<b>23.4</b>	<b>17.5</b>	
<b>RURAL ESTIMATED TOTALS</b>				<b>749.00</b>	<b>47.0</b>	<b>34.8</b>	

APPLICATION RATES:

MILESTONE VM: 6.0 OUNCES (LIQUID) / ACRE

ESCORT XP HERBICIDE: 1 OUNCE (DRY) / ACRE

# SCHEDULE OF QUANTITIES

## MCLEAN COUNTY

K0029636

X0325947

ROUTE	LOCATION	STARTING LOCATION	ENDING LOCATION	ESTIMATED	ESCORT XP HERBICIDE	MILESTONE VM	URBAN / RURAL
				AREA	POUND	GALLON	
				ACRES	POUND	GALLON	
I - 55	SB EOS TO FENCE	N MAIN ST INTERCHANGE	I - 39 INTERCHANGE	6.55	0.4	0.3	URBAN
I - 55	NB EOS TO FENCE	I - 39 INTERCHANGE	I - 74 INTERCHANGE	15.17	0.9	0.7	URBAN
I - 55	SB EOS TO FENCE	I - 39 INTERCHANGE	I - 74 INTERCHANGE	15.17	0.9	0.7	URBAN
I - 55	NB EOS TO FENCE	I - 74 INTERCHANGE	IL CH 9 INTERCHANGE	35.22	2.2	1.7	URBAN
I - 55	SB EOS TO FENCE	I - 74 INTERCHANGE	IL CH 9 INTERCHANGE	35.22	2.2	1.7	URBAN
I - 55	NB EOS TO FENCE	IL CH 9 INTERCHANGE	RR NORTH OF VETERANS PARKWAY INTERCHANGE	60.30	3.8	2.8	URBAN
I - 55	SB EOS TO FENCE	IL CH 9 INTERCHANGE	RR NORTH OF VETERANS PARKWAY INTERCHANGE	60.30	3.8	2.8	URBAN
I - 55	NB EOS TO FENCE	RR NORTH OF VETERANS PARKWAY INTERCHANGE	I - 55 NB OFF RAMP	24.07	1.5	1.1	URBAN
I - 55	SB EOS TO FENCE	RR NORTH OF VETERANS PARKWAY INTERCHANGE	I - 55 NB OFF RAMP	24.07	1.5	1.1	URBAN
I - 55	NB EOS TO FENCE	I - 55 NB OFF RAMP	IL CH 34 INTERCHANGE	44.16	2.8	2.1	URBAN
I - 55	SB EOS TO FENCE	I - 55 NB OFF RAMP	IL CH 34 INTERCHANGE	44.16	2.8	2.1	URBAN
I - 55	NB EOS TO FENCE	IL CH 34 INTERCHANGE	US 136 INTERCHANGE	127.25	8.0	6.0	RURAL
I - 55	SB EOS TO FENCE	IL CH 34 INTERCHANGE	US 136 INTERCHANGE	127.25	8.0	6.0	RURAL
I - 55	NB EOS TO FENCE	US 136 INTERCHANGE	MCLEAN/LOGAN COUNTY LINE	35.87	2.2	1.7	RURAL
I - 55	SB EOS TO FENCE	US 136 INTERCHANGE	MCLEAN/LOGAN COUNTY LINE	35.87	2.2	1.7	RURAL
I - 74	EB EOS TO FENCE	WOODFORD / MCLEAN COUNTY LINE	RR WEST OF IL CH 150 INTERCHANGE	32.37	2.0	1.5	RURAL
I - 74	WB EOS TO FENCE	WOODFORD / MCLEAN COUNTY LINE	RR WEST OF IL CH 150 INTERCHANGE	32.37	2.0	1.5	RURAL
I - 74	EB EOS TO FENCE	RR WEST OF IL CH 150 INTERCHANGE	END OF RAMPS EAST OF IL CH 150 INTERCHANGE	17.85	1.1	0.8	RURAL
I - 74	WB EOS TO FENCE	RR WEST OF IL CH 150 INTERCHANGE	END OF RAMPS EAST OF IL CH 150 INTERCHANGE	17.85	1.1	0.8	RURAL
<b>ESTIMATED TOTALS</b>				<b>791.07</b>	<b>49.4</b>	<b>37.1</b>	
<b>URBAN ESTIMATED TOTALS</b>				<b>364.39</b>	<b>22.8</b>	<b>17.1</b>	
<b>RURAL ESTIMATED TOTALS</b>				<b>426.68</b>	<b>26.6</b>	<b>20.0</b>	

APPLICATION RATES:

MILESTONE VM: 6.0 OUNCES (LIQUID) / ACRE

ESCORT XP HERBICIDE: 1 OUNCE (DRY) / ACRE

# SCHEDULE OF QUANTITIES

## MCLEAN COUNTY

K0029636

X0325947

ROUTE	LOCATION	STARTING LOCATION	ENDING LOCATION	ESTIMATED	ESCORT XP HERBICIDE	MILESTONE VM	URBAN / RURAL
				AREA	POUND	GALLON	
				ACRES	POUND	GALLON	
I -74	EB EOS TO FENCE	END OF RAMPS EAST OF IL CH 150 INTERCHANGE	END OF MERGING RAMP TO I - 55 SB	22.03	1.4	1.0	URBAN
I -74	WB EOS TO FENCE	END OF RAMPS EAST OF IL CH 150 INTERCHANGE	END OF MERGING RAMP TO I - 55 SB	22.03	1.4	1.0	URBAN
I -74	EB EOS TO FENCE	WEST END OF EXIT RAMP FROM I - 55 SB	EAST END OF EXIT RAMP FROM I - 55 SB	27.78	1.7	1.3	URBAN
I -74	WB EOS TO FENCE	WEST END OF EXIT RAMP FROM I - 55 SB	EAST END OF EXIT RAMP FROM I - 55 SB	27.78	1.7	1.3	URBAN
I -74	EB EOS TO FENCE	EAST END OF EXIT RAMP FROM I - 55 SB	WEST OF US 51 INTERCHANGE	5.71	0.4	0.3	URBAN
I -74	WB EOS TO FENCE	EAST END OF EXIT RAMP FROM I - 55 SB	WEST OF US 51 INTERCHANGE	5.71	0.4	0.3	URBAN
I -74	EB EOS TO FENCE	WEST OF US 51 INTERCHANGE	EAST OF US 51 INTERCHANGE	3.80	0.2	0.2	URBAN
I -74	WB EOS TO FENCE	WEST OF US 51 INTERCHANGE	EAST OF US 51 INTERCHANGE	3.80	0.2	0.2	URBAN
I -74	EB EOS TO FENCE	EAST OF US 51 INTERCHANGE	WEST OF IL CH 36 INTERCHANGE	61.88	3.9	2.9	URBAN
I -74	WB EOS TO FENCE	EAST OF US 51 INTERCHANGE	WEST OF IL CH 36 INTERCHANGE	61.88	3.9	2.9	URBAN
I -74	EB EOS TO FENCE	WEST OF IL CH 36 INTERCHANGE	EAST OF IL CH 36 INTERCHANGE	2.58	0.2	0.1	URBAN
I -74	WB EOS TO FENCE	WEST OF IL CH 36 INTERCHANGE	EAST OF IL CH 36 INTERCHANGE	2.58	0.2	0.1	URBAN
I -74	EB EOS TO FENCE	EAST OF IL CH 36 INTERCHANGE	WEST OF IL CH 21 INTERCHANGE	43.24	2.7	2.0	RURAL
I -74	WB EOS TO FENCE	EAST OF IL CH 36 INTERCHANGE	WEST OF IL CH 21 INTERCHANGE	43.24	2.7	2.0	RURAL
I -74	EB EOS TO FENCE	WEST OF IL CH 21 INTERCHANGE	EAST OF IL CH 21 INTERCHANGE	3.87	0.2	0.2	RURAL
I -74	WB EOS TO FENCE	WEST OF IL CH 21 INTERCHANGE	EAST OF IL CH 21 INTERCHANGE	3.87	0.2	0.2	RURAL
I -74	EB EOS TO FENCE	EAST OF IL CH 21 INTERCHANGE	WEST OF US 136 INTERCHANGE	16.76	1.0	0.8	RURAL
I -74	WB EOS TO FENCE	EAST OF IL CH 21 INTERCHANGE	WEST OF US 136 INTERCHANGE	16.76	1.0	0.8	RURAL
I -74	EB EOS TO FENCE	WEST OF US 136 INTERCHANGE	EAST OF US 136 INTERCHANGE	10.16	0.6	0.5	RURAL
<b>ESTIMATED TOTALS</b>				<b>385.46</b>	<b>24.0</b>	<b>18.1</b>	
<b>URBAN ESTIMATED TOTALS</b>				<b>247.56</b>	<b>15.6</b>	<b>11.6</b>	
<b>RURAL ESTIMATED TOTALS</b>				<b>137.90</b>	<b>8.4</b>	<b>6.5</b>	

APPLICATION RATES:

MILESTONE VM: 6.0 OUNCES (LIQUID) / ACRE

ESCORT XP HERBICIDE: 1 OUNCE (DRY) / ACRE

# SCHEDULE OF QUANTITIES

## MCLEAN COUNTY

ROUTE	LOCATION	STARTING LOCATION	ENDING LOCATION	K0029636		X0325947	
				ESTIMATED AREA	ESCORT XP HERBICIDE	MILESTONE VM	URBAN / RURAL
				ACRES	POUND	GALLON	
I -74	WB EOS TO FENCE	WEST OF US 136 INTERCHANGE	EAST OF US 136 INTERCHANGE	10.16	0.6	0.5	RURAL
I -74	EB EOS TO FENCE	EAST OF US 136 INTERCHANGE	MCLEAN / DEWITT COUNTY LINE	15.83	1.0	0.7	RURAL
I -74	WB EOS TO FENCE	EAST OF US 136 INTERCHANGE	MCLEAN / DEWITT COUNTY LINE	15.83	1.0	0.7	RURAL
<b>ESTIMATED TOTALS</b>				<b>41.82</b>	<b>2.6</b>	<b>1.9</b>	
<b>URBAN ESTIMATED TOTALS</b>				<b>0.00</b>	<b>0.0</b>	<b>0.0</b>	
<b>RURAL ESTIMATED TOTALS</b>				<b>41.82</b>	<b>2.6</b>	<b>1.9</b>	

SHEET NO.	ESTIMATED AREA ACRES				TOTAL ESTIMATED AREA ACRES	K0029636 ESCORT XP HERBICIDE POUND				TOTAL ESCORT XP HERBICIDE POUND	X0325947 MILESTONE VM GALLON				TOTAL MILESTONE VM GALLON
	1	2	3	4		1	2	3	4		1	2	3	4	
	<b>URBAN ESTIMATED TOTALS</b>	374.65	364.39	247.56		0	<b>986.6</b>	23.4	22.8		15.6	0	<b>61.8</b>	17.5	
<b>RURAL ESTIMATED TOTALS</b>	749	426.68	137.9	41.82	<b>1355.4</b>	47	26.6	8.4	2.6	<b>84.6</b>	34.8	20	6.5	1.9	<b>63.2</b>
<b>ESTIMATED TOTALS</b>	1123.37	791.07	385.46	41.82	<b>2341.72</b>	70.4	49.4	24.0	2.6	<b>146.4</b>	52.3	37.1	18.1	1.9	<b>109.4</b>
<b>USE TOTALS</b>										<b>146.4</b>					<b>109.4</b>

APPLICATION RATES:

MILESTONE VM: 6.0 OUNCES (LIQUID) / ACRE

ESCORT XP HERBICIDE: 1 OUNCE (DRY) / ACRE



# SCHEDULE OF QUANTITIES

## DEWITT COUNTY

ROUTE	LOCATION	STARTING LOCATION	ENDING LOCATION	K0029636		X0325947	
				ESTIMATED AREA	ESCORT XP HERBICIDE	MILESTONE VM	URBAN / RURAL
				ACRES	POUND	GALLON	
I - 74	WB EOS TO FENCE	MCLEAN / DEWITT COUNTY LINE	OFFRAMP WEST OF REST AREA	2.58	0.2	0.1	RURAL
I - 74	EB EOS TO FENCE	MCLEAN / DEWITT COUNTY LINE	OFFRAMP WEST OF REST AREA	2.58	0.2	0.1	RURAL
I - 74	WB EOS TO FENCE	OFFRAMP WEST OF REST AREA	OFFRAMP EAST OF REST AREA	7.34	0.5	0.3	RURAL
I - 74	EB EOS TO FENCE	OFFRAMP WEST OF REST AREA	OFFRAMP EAST OF REST AREA	7.34	0.5	0.3	RURAL
I - 74	WB EOS TO FENCE	OFFRAMP EAST OF REST AREA	OFFRAMP WEST OF IL CH 54 INTERCHANGE	32.61	2.0	1.5	RURAL
I - 74	EB EOS TO FENCE	OFFRAMP EAST OF REST AREA	OFFRAMP WEST OF IL CH 54 INTERCHANGE	32.61	2.0	1.5	RURAL
I - 74	WB EOS TO FENCE	OFFRAMP WEST OF IL CH 54 INTERCHANGE	OFFRAMP EAST OF IL CH 54 INTERCHANGE	7.28	0.5	0.3	RURAL
I - 74	EB EOS TO FENCE	OFFRAMP WEST OF IL CH 54 INTERCHANGE	OFFRAMP EAST OF IL CH 54 INTERCHANGE	7.28	0.5	0.3	RURAL
I - 74	WB EOS TO FENCE	OFFRAMP EAST OF IL CH 54 INTERCHANGE	DEWITT / PIATT COUNTY LINE	7.43	0.5	0.3	RURAL
I - 74	EB EOS TO FENCE	OFFRAMP EAST OF IL CH 54 INTERCHANGE	DEWITT / PIATT COUNTY LINE	7.43	0.5	0.3	RURAL
<b>ESTIMATED TOTALS</b>				<b>114.48</b>	<b>7.4</b>	<b>5.0</b>	
<b>URBAN ESTIMATED TOTALS</b>				<b>0.00</b>	<b>0.0</b>	<b>0.0</b>	
<b>RURAL ESTIMATED TOTALS</b>				<b>114.00</b>	<b>7.4</b>	<b>5.0</b>	
<b>USE TOTALS</b>					<b>7.6</b>	<b>5.6</b>	

APPLICATION RATES:

MILESTONE VM: 6.0 OUNCES (LIQUID) / ACRE

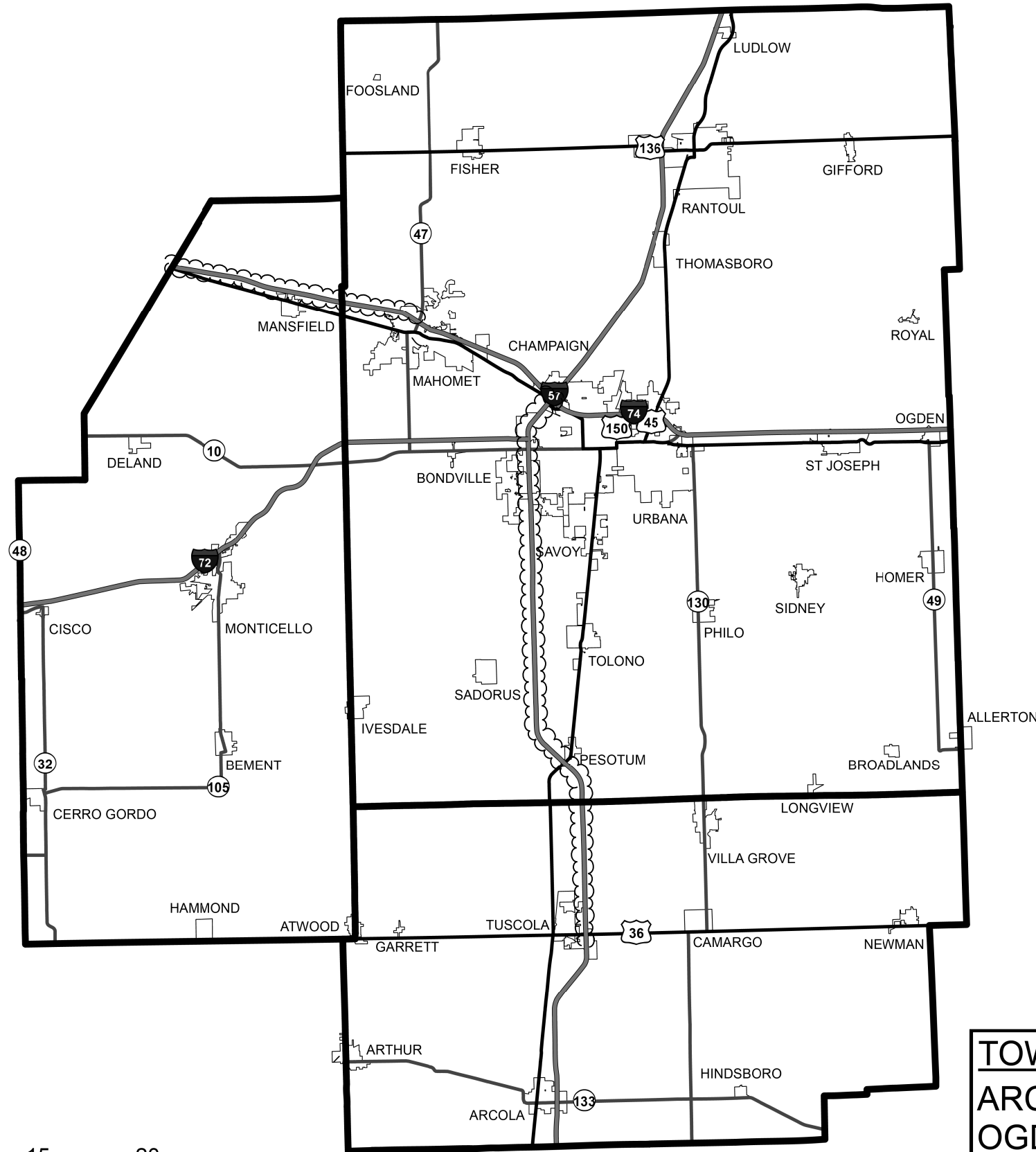
ESCORT XP HERBICIDE: 1 OUNCE (DRY) / ACRE

# HERBICIDE RESTRICTION MAP

## RESTRICTED LOCATIONS

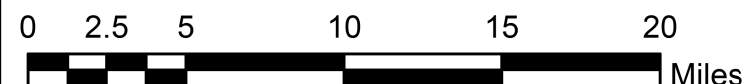
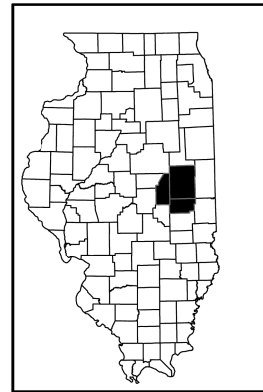
ROUTE	COUNTY	TYPE OF SENSITIVE AREA	LOCATION	
			BEGINNING MILEPOST	ENDING MILEPOST
I-55	MCLEAN	ROADSIDE PRAIRIE REMNANT	181.00	186.00
I-55	MCLEAN	NATURE PRESERVE OR NATURAL AREA	177.14	177.20
I-55	MCLEAN	ROADSIDE PRAIRIE REMNANT	173.15	176.60
I-55	MCLEAN	THREATENED OR ENDANGERED SPECIES	175.98	176.29
I-55	MCLEAN	ROADSIDE PRAIRIE REMNANT	154.00	155.14
I-55	MCLEAN	ROADSIDE PRAIRIE REMNANT	151.70	152.33
I-55	MCLEAN	THREATENED OR ENDANGERED SPECIES	150.00	150.25
I-55	MCLEAN	NATURE PRESERVE OR NATURAL AREA	150.00	150.20
I-55	MCLEAN	NATURE PRESERVE OR NATURAL AREA	148.73	148.79
I-55	MCLEAN	NATURE PRESERVE OR NATURAL AREA	146.94	147.58
I-55	MCLEAN	ROADSIDE PRAIRIE REMNANT	141.41	143.59
I-39	MCLEAN	NATURE PRESERVE OR NATURAL AREA	8.84	8.90
I-57	CHAMPAIGN	ROADSIDE PRAIRIE REMNANT	219.17	219.43

# SUPPLEMENTAL LOCATION MAP CHAMPAIGN, DOUGLAS, & PIATT COUNTIES



 WEED SPRAYING  
 LOCATION

**TOWNSHIPS:**  
 ARCOLA, CHAMPAIGN, HENSLEY, MAHOMET,  
 OGDEN, PESOTUM, ST. JOSEPH, TOLONO,  
 TUSCOLA, MANSFIELD, URBANA



FILE NAME =	USER NAME = jaymedf	DESIGNED -	REVISED -	<b>STATE OF ILLINOIS DEPARTMENT OF TRANSPORTATION</b>	<b>SUPPLEMENTAL LOCATION MAP CHAMPAIGN, DOUGLAS, AND PIATT COUNTIES</b>				F.A.I. RTE.	SECTION	COUNTY	TOTAL SHEETS	SHEET NO.
ct:\pw\work\p\dot\jaymedf\d0403808\0570083-sht-Loc_Maps.dgn		DRAWN -	REVISED -		VAR			VARIOUS	14	11			
\$MODELNAME\$	PLOT SCALE = 40.0000' / in.	CHECKED -	REVISED -		*D5 WEED SPRAYING 2015-1				CONTRACT NO. 70A83				
	PLOT DATE = 10/7/2014	DATE -	REVISED -		SCALE:	SHEET	OF	SHEETS	STA.	TO	STA.	ILLINOIS FED. AID PROJECT	

# SUPPLEMENTAL SCHEDULE

## PIATT COUNTY

ROUTE	LOCATION	STARTING LOCATION	ENDING LOCATION	ESTIMATED AREA	K0029636	X0325947	URBAN / RURAL
					ESCORT XP HERBICIDE	MILESTONE VM	
				ACRES	POUND	GALLON	
I - 74	WB EOS TO FENCE	DEWITT / PIATT COUNTY LINE	WEST OF IL CH 2 INTERCHANGE	107.96	6.7	5.1	RURAL
I - 74	EB EOS TO FENCE	DEWITT / PIATT COUNTY LINE	WEST OF IL CH 2 INTERCHANGE	107.96	6.7	5.1	RURAL
I - 74	WB EOS TO FENCE	WEST OF IL CH 2 INTERCHANGE	EAST OF IL CH 2 INTERCHANGE	10.22	0.6	0.5	RURAL
I - 74	EB EOS TO FENCE	WEST OF IL CH 2 INTERCHANGE	EAST OF IL CH 2 INTERCHANGE	10.22	0.6	0.5	RURAL
I - 74	WB EOS TO FENCE	EAST OF IL CH 2 INTERCHANGE	PIATT / CHAMPAIGN COUNTY LINE	17.29	1.1	0.8	RURAL
I - 74	EB EOS TO FENCE	EAST OF IL CH 2 INTERCHANGE	PIATT / CHAMPAIGN COUNTY LINE	17.29	1.1	0.8	RURAL
<b>ESTIMATED TOTALS</b>				<b>270.94</b>	<b>16.8</b>	<b>12.8</b>	
URBAN ESTIMATED TOTALS				0.00	0.0	0.0	
RURAL ESTIMATED TOTALS				270.94	16.8	12.8	

APPLICATION RATES:

MILESTONE VM: 6.0 OUNCES (LIQUID) / ACRE

ESCORT XP HERBICIDE: 1 OUNCE (DRY) / ACRE

# SUPPLEMENTAL SCHEDULE

## CHAMPAIGN COUNTY

K0029636

X0325947

ROUTE	LOCATION	STARTING LOCATION	ENDING LOCATION	ESTIMATED	ESCORT XP HERBICIDE	MILESTONE VM	URBAN / RURAL
				AREA	POUND	GALLON	
				ACRES			
I -74	EB EOS TO FENCE	PIATT / CHAMPAIGN COUNTY LINE	WEST OF I1 CH 47 INTERCHANGE	34.43	2.2	1.6	URBAN
I -74	WB EOS TO FENCE	PIATT / CHAMPAIGN COUNTY LINE	WEST OF I1 CH 47 INTERCHANGE	34.43	2.2	1.6	URBAN
I -74	EB EOS TO FENCE	WEST OF IL CH 47 INTERCHANGE	EAST OF IL CH 47 INTERCHANGE	9.18	0.6	0.4	URBAN
I -74	WB EOS TO FENCE	WEST OF IL CH 47 INTERCHANGE	EAST OF IL CH 47 INTERCHANGE	9.18	0.6	0.4	URBAN
I -57	SB EOS TO FENCE	NORTH OF I - 74 / I - 57 INTERCHANGE	SOUTH OF I - 74 / I - 57 INTERCHANGE	6.61	0.4	0.3	URBAN
I -57	NB EOS TO FENCE	NORTH OF I - 74 / I - 57 INTERCHANGE	SOUTH OF I - 74 / I - 57 INTERCHANGE	6.61	0.4	0.3	URBAN
I -57	SB EOS TO FENCE	SOUTH OF I - 74 / I - 57 INTERCHANGE	NORTH OF W CURTIS ROAD INTERCHANGE	23.75	1.5	1.1	URBAN
I -57	NB EOS TO FENCE	SOUTH OF I - 74 / I - 57 INTERCHANGE	NORTH OF W CURTIS ROAD INTERCHANGE	23.75	1.5	1.1	URBAN
I -57	SB EOS TO FENCE	NORTH OF W CURTIS ROAD INTERCHANGE	SOUTH OF W CURTIS ROAD INTERCHANGE	6.69	0.4	0.3	URBAN
I -57	NB EOS TO FENCE	NORTH OF W CURTIS ROAD INTERCHANGE	SOUTH OF W CURTIS ROAD INTERCHANGE	6.69	0.4	0.3	URBAN
I -57	SB EOS TO FENCE	SOUTH OF W CURTIS ROAD INTERCHANGE	NORTH OF IL CH 18 INTERCHANGE	24.95	1.6	1.2	URBAN
I -57	NB EOS TO FENCE	SOUTH OF W CURTIS ROAD INTERCHANGE	NORTH OF IL CH 18 INTERCHANGE	24.95	1.6	1.2	URBAN
I -57	SB EOS TO FENCE	NORTH OF IL CH 18 INTERCHANGE	SOUTH OF IL CH 18 INTERCHANGE	4.10	0.3	0.2	RURAL
I -57	NB EOS TO FENCE	NORTH OF IL CH 18 INTERCHANGE	SOUTH OF IL CH 18 INTERCHANGE	4.10	0.3	0.2	RURAL
I -57	SB EOS TO FENCE	SOUTH OF IL CH 18 INTERCHANGE	NORTH OF US 45 INTERCHANGE	63.35	4.0	3.0	RURAL
I -57	NB EOS TO FENCE	SOUTH OF IL CH 18 INTERCHANGE	NORTH OF US 45 INTERCHANGE	63.35	4.0	3.0	RURAL
I -57	SB EOS TO FENCE	NORTH OF US 45 INTERCHANGE	SOUTH OF US 45 INTERCHANGE	5.13	0.3	0.2	RURAL
I -57	NB EOS TO FENCE	NORTH OF US 45 INTERCHANGE	SOUTH OF US 45 INTERCHANGE	5.13	0.3	0.2	RURAL
I -57	SB EOS TO FENCE	SOUTH OF US 45 INTERCHANGE	CHAMPAIGN / DOUGLAS COUNTY LINE	16.00	1.0	0.8	RURAL
I -57	NB EOS TO FENCE	SOUTH OF US 45 INTERCHANGE	CHAMPAIGN / DOUGLAS COUNTY LINE	16.00	1.0	0.8	RURAL
<b>ESTIMATED TOTALS</b>				<b>388.38</b>	<b>24.6</b>	<b>18.2</b>	
<b>URBAN ESTIMATED TOTALS</b>				<b>211.22</b>	<b>13.4</b>	<b>9.8</b>	
<b>RURAL ESTIMATED TOTALS</b>				<b>177.16</b>	<b>11.2</b>	<b>8.4</b>	

APPLICATION RATES:

MILESTONE VM: 6.0 OUNCES (LIQUID) / ACRE

ESCORT XP HERBICIDE: 1 OUNCE (DRY) / ACRE

# SUPPLEMENTAL SCHEDULE

## DOUGLAS COUNTY

ROUTE	LOCATION	STARTING LOCATION	ENDING LOCATION	ESTIMATED AREA	K0029636	X0325947	URBAN / RURAL
					ESCORT XP HERBICIDE	MILESTONE VM	
				ACRES	POUND	GALLON	
I -57	SB EOS TO FENCE	CHAMPAIGN / DOUGLAS COUNTY LINE	NORTH OF US 36 INTERCHANGE	59.68	3.7	2.8	RURAL
I -57	NB EOS TO FENCE	CHAMPAIGN / DOUGLAS COUNTY LINE	NORTH OF US 36 INTERCHANGE	59.68	3.7	2.8	RURAL
I -57	SB EOS TO FENCE	NORTH OF US 36 INTERCHANGE	SOUTH OF US 36 INTERCHANGE	17.51	1.1	0.8	RURAL
I -57	NB EOS TO FENCE	NORTH OF US 36 INTERCHANGE	SOUTH OF US 36 INTERCHANGE	17.51	1.1	0.8	RURAL
<b>ESTIMATED TOTALS</b>				<b>154.38</b>	<b>9.6</b>	<b>7.2</b>	
URBAN ESTIMATED TOTALS				0.00	0.0	0.0	
RURAL ESTIMATED TOTALS				154.38	9.6	7.2	

APPLICATION RATES:

MILESTONE VM: 6.0 OUNCES (LIQUID) / ACRE

ESCORT XP HERBICIDE: 1 OUNCE (DRY) / ACRE