

STATE OF ILLINOIS

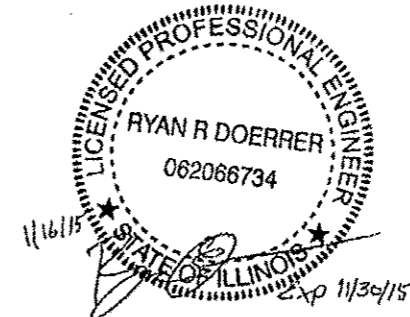
DEPARTMENT OF TRANSPORTATION

DIVISION OF HIGHWAYS

PLANS FOR PROPOSED
FEDERAL AID PROJECT
HIGHWAY BRIDGE PROGRAM

FAS ROUTE 63 (SOUTH KENT ROAD)
SECTION 12-00180-00-BR
PROJECT BRS-0063 (107)
STRUCTURE REPLACEMENT
STEPHENSON COUNTY

C-92-060-13



F.A.S. RTE.	SECTION	COUNTY	TOTAL SHEETS	SHEET NO.
63	12-00180-00-BR	STEPHENSON	21	1
		ILLINOIS	CONTRACT NO. 85608	

INDEX OF SHEETS

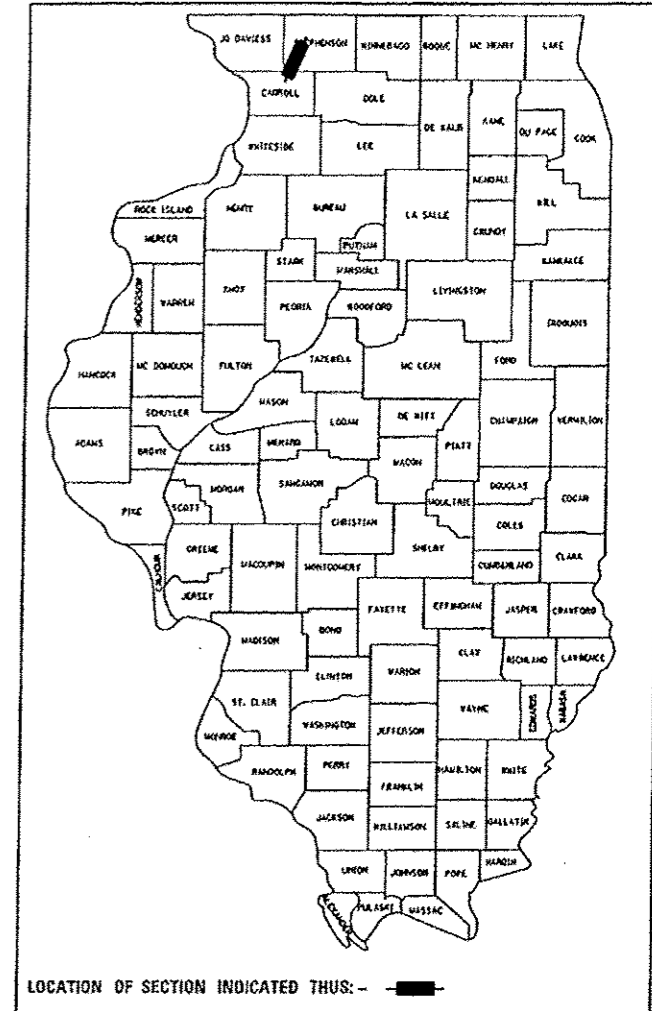
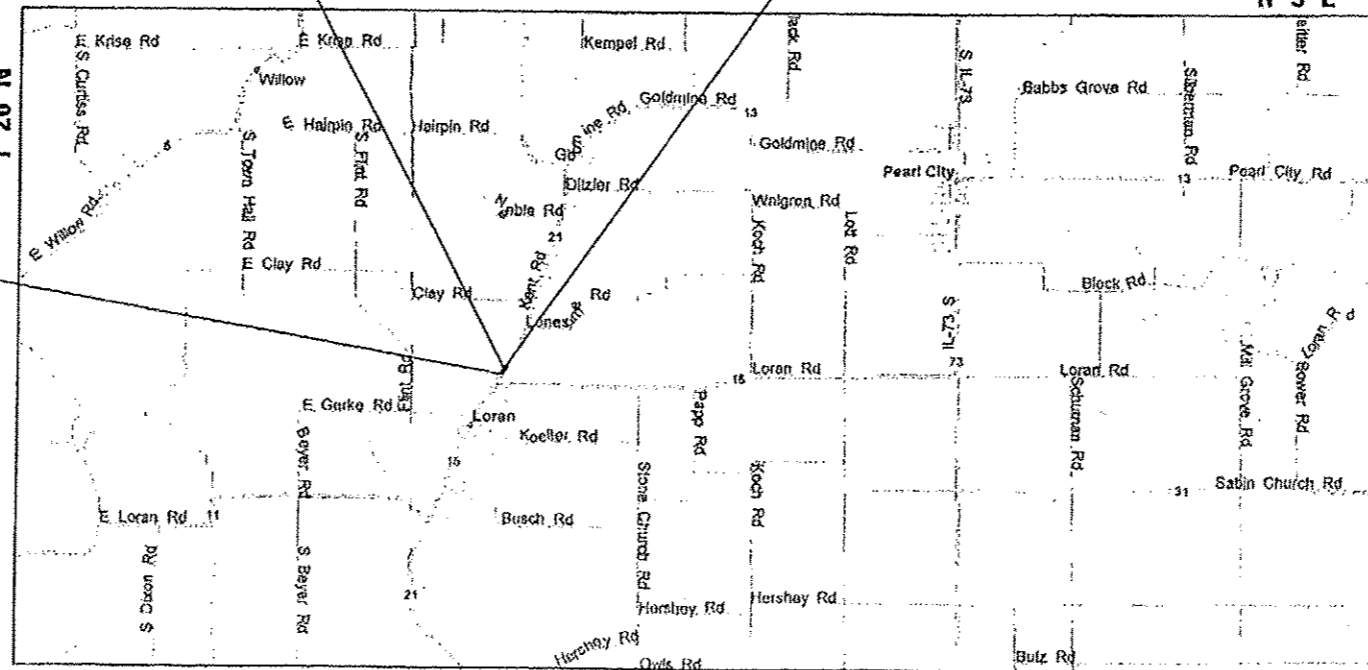
- 1 COVER SHEET
- 2-3 SUMMARY OF QUANTITIES
- 4 GENERAL NOTES
- 5 SCHEDULE OF QUANTITIES
- 6 TYPICAL SECTIONS
- 7 ALIGNMENT, TIES, AND BENCHMARKS
- 8 REMOVAL PLAN
- 9 KENT ROAD PLAN AND PROFILE
- 10 PLUM CREEK PLAN AND PROFILE
- 11 TRAFFIC CONTROL PLAN
- 12 GRADING PLAN
- 13 EROSION CONTROL PLAN
- 14 RIGHT-OF-WAY
- 15 CULVERT DETAILS STRUCTURE NO. 089-5140
- 16 GENERAL DETAILS STRUCTURE NO. 089-5140
- 17 SOIL BORING LOGS STRUCTURE NO. 089-5140
- 18 DIST. 2 20.4 - GRADING AROUND WINGWALLS
- 18 DIST. 2 37.2 - UNDERDRAIN FOR ACROSS ROAD (AR) CULVERTS
- 19-20 KENT ROAD CROSS SECTIONS
- 21 PLUM CREEK CROSS SECTIONS

HIGHWAY STANDARDS

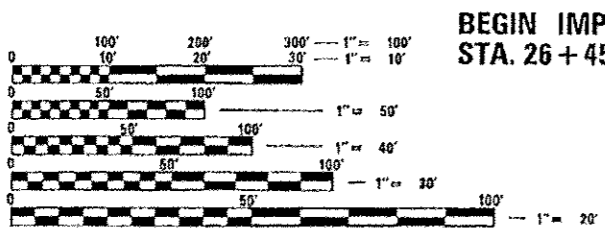
- 000001-06 STANDARD SYMBOLS, ABBREVIATIONS, AND PATTERNS
- 280001-07 TEMPORARY EROSION CONTROL SYSTEMS
- 515001-03 NAME PLATES FOR BRIDGES
- 542301-03 PRECAST REINFORCED CONCRETE FLARED END SECTION
- 601101-01 CONCRETE HEADWALL FOR PIPE DRAIN
- 665001-02 WOVEN WIRE FENCE
- 701001-02 OFF-RD OPERATIONS, 2L, 2W, MORE THAN 15' AWAY
- 701006-05 OFF-RD OPERATIONS, 2L, 2W, 15' TO 24" FROM PAVEMENT EDGE
- 701201-04 LANE CLOSURE, 2L, 2W DAY ONLY FOR SPEEDS > 45 MPH
- 701311-03 LANE CLOSURE, 2L, 2W MOVING OPERATIONS-DAY ONLY
- 701901-03 TRAFFIC CONTROL DEVICES
- 720011-01 METAL POSTS FOR SIGNS, MARKERS, AND DELINEATORS
- 728001-01 TELESCOPING STEEL SIGN SUPPORT
- 729001-01 APPLICATIONS OF TYPE A & B METAL POSTS (FOR SIGNS & MARKERS)
- B.L.R. 21-9 TYPICAL APPLICATION OF TRAFFIC CONTROL DEVICES FOR CONSTRUCTION ON RURAL LOCAL HIGHWAYS
- B.L.R. 22-7 TYPICAL APPLICATION OF TRAFFIC CONTROL DEVICES FOR CONSTRUCTION ON RURAL LOCAL HIGHWAYS

BOX CULVERT REPLACEMENT
STA. 27 + 40.48
EXIST SN 089-5009
PROP SN 089-5140

END IMPROVEMENT
STA. 28 + 30.00



LOCATION OF SECTION INDICATED THUS: —



FULL SIZE PLANS HAVE BEEN PREPARED USING STANDARD ENGINEERING SCALES. REDUCED SIZED PLANS WILL NOT CONFORM TO STANDARD SCALES. IN MAKING MEASUREMENTS ON REDUCED PLANS, THE ABOVE SCALES MAY BE USED.

J.U.L.I.E.
JOINT UTILITY LOCATION INFORMATION FOR EXCAVATION
1-800-892-0123
OR 811

BEGIN IMPROVEMENT
STA. 26 + 45.00

HIGHWAY CLASSIFICATION: COLLECTOR
DESIGN SPEED: 55 MPH
ADT = 175: 3% TRUCK
POLICY: NEW CONSTRUCTION/RECONSTRUCTION

LOCATION MAP

NOT TO SCALE
GROSS LENGTH = 185 FT. = 0.035 MILE
NET LENGTH = 185 FT. = 0.035 MILE

CONTRACT NO. 85608

STEPHENSON COUNTY HIGHWAY DEPARTMENT

APPROVED 1-19 2015
Chad T. ...
STEPHENSON COUNTY ENGINEER

PASSED JAN 21 2015
Paul A. ...
DISTRICT 2 ENGINEER OF LOCAL ROADS & STREETS

RELEASING FOR BID BASED ON LIMITED REVIEW
JAN 21 2015
Paul A. ...
DEPUTY DIRECTOR OF HIGHWAYS, REGION 2 ENGINEER

STATE OF ILLINOIS
DEPARTMENT OF TRANSPORTATION

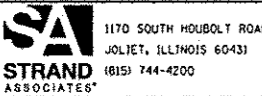


FILE NAME = S:\JUL\3788-3799\3718\881\Microst\CADD Sheets\DR12145-A11-802-300.dgn

CONSTRUCTION CODE 0011			80% FED 20% STATE
CODE NO.	ITEM	UNIT	TOTAL QUANTITY
20100110	TREE REMOVAL (6 TO 15 UNITS DIAMETER)	UNIT	12
20400800	FURNISHED EXCAVATION	CU YD	75
20700220	POROUS GRANULAR EMBANKMENT	CU YD	37
+ 25100630	EROSION CONTROL BLANKET	SO YD	1,314
+ 28000250	TEMPORARY EROSION CONTROL SEEDING	POUND	28
28000305	TEMPORARY DITCH CHECKS	FOOT	50
28000400	PERIMETER EROSION BARRIER	FOOT	492
28100107	STONE RIPRAP, CLASS A4	SO YD	90
28200200	FILTER FABRIC	SO YD	90
• 30300116	AGGREGATE SUBGRADE IMPROVEMENT 16"	SO YD	93
35101400	AGGREGATE BASE COURSE, TYPE B	TON	219
• 40600275	BITUMINOUS MATERIALS (PRIME COAT)	POUND	1750

• INDICATES SPECIAL PROVISION
+ INDICATES SPECIALTY ITEM

CONSTRUCTION CODE 0011			80% FED 20% STATE
CODE NO.	ITEM	UNIT	TOTAL QUANTITY
40600982	HOT-MIX ASPHALT SURFACE REMOVAL - BUTT JOINT	SO YD	45
40603080	HOT-MIX ASPHALT BINDER COURSE, IL-19.0, N50	TON	55
40603310	HOT-MIX ASPHALT SURFACE COURSE, MIX "C", N50	TON	37
48101200	AGGREGATE SHOULDERS, TYPE B	TON	23
50100100	REMOVAL OF EXISTING STRUCTURES	EACH	1
50800105	REINFORCEMENT BARS	POUND	23,530
51500100	NAME PLATES	EACH	1
54003000	CONCRETE BOX CULVERTS	CU YD	177
60100060	CONCRETE HEADWALLS FOR PIPE DRAINS	EACH	4
60107600	PIPE UNDERDRAINS 4"	FOOT	80



1170 SOUTH HOUBOLT ROAD JOLIET, ILLINOIS 60431 (815) 744-4200	USER NAME = jahnkp	DESIGNED - SLG	REVISED -
	PLOT SCALE = 2,0000 / 1" =	DRAWN - BJF	REVISED -
	PLOT DATE = 1/15/2015	CHECKED - RRD	REVISED -
		DATE - 01/15/2015	REVISED -

**STEPHENSON COUNTY
HIGHWAY DEPARTMENT**

SUMMARY OF QUANTITIES			
SCALE	SHEET	OF SHEETS	STA. TO STA.

F.A.S. RTE.	SECTION	COUNTY	TOTAL SHEETS	SHEET NO.
63	12-00180-00-BR	STEPHENSON	21	2
CONTRACT NO. 85608			ILLINOIS FED. AID PROJECT	

FILE NAME = S:\JUL\3728-3799\3716\B1\Micro\CA00 Sheets\DR12345-ht-802-SQ0.dgn

CONSTRUCTION CODE 0011			80% FED 20% STATE	
CODE NO.	ITEM	UNIT	TOTAL QUANTITY	
67100100	MOBILIZATION	L SUM	1	
72400310	REMOVE SIGN PANEL - TYPE 1	SQ FT	9	
72400710	RELOCATE SIGN PANEL - TYPE 1	SQ FT	9	
72800100	TELESCOPING STEEL SIGN SUPPORT	FOOT	17	
73700100	REMOVE GROUND MOUNTED SIGN SUPPORT	EACH	1	
+ 78001110	PAINT PAVEMENT MARKING - LINE 4"	FOOT	417	
+ A2006912	TREE, QUERCUS PALUSTRIS (PIN OAK), 1-1/2" CALIPER, BALLED AND BURLAPPED	EACH	2	
• X2020410	EARTH EXCAVATION (SPECIAL)	CY YD	389	
+ • X2501000	SEEDING, CLASS 2 (SPECIAL)	ACRE	.25	
+ • X2502019	SEEDING, CLASS 4B (SPECIAL)	ACRE	.25	
• X7010216	TRAFFIC CONTROL AND PROTECTION, (SPECIAL)	L SUM	1	

• INDICATES SPECIAL PROVISION
+ INDICATES SPECIALTY ITEM



USER NAME = jahnkp	DESIGNED - SLG	REVISED -
PLOT SCALE = 2.0000' / 1"	DRAWN - BJF	REVISED -
PLOT DATE = 1/15/2015	CHECKED - RRD	REVISED -
	DATE - 01/15/2015	REVISED -

**STEPHENSON COUNTY
HIGHWAY DEPARTMENT**

SUMMARY OF QUANTITIES				
SCALE:	SHEET	OF	SHEETS	STA. TO STA.

F.A.S. RTE.	SECTION	COUNTY	TOTAL SHEETS	SHEET NO.
63	12-00180-00-BR	STEPHENSON	21	3
CONTRACT NO. 85608				
ILLINOIS FED. AID PROJECT				

GENERAL NOTES

1. ALL CONSTRUCTION SHALL BE DONE ACCORDING TO THE STATE OF ILLINOIS "STANDARD SPECIFICATIONS FOR ROAD AND BRIDGE CONSTRUCTION" ADOPTED JAN. 1, 2012, THE "SUPPLEMENTAL SPECIFICATIONS AND RECURRING SPECIAL PROVISIONS" ADOPTED JANUARY 1, 2015, THE DETAILS IN THESE PLANS, AND THE SPECIAL PROVISIONS INCLUDED IN THE CONTRACT DOCUMENTS.
2. THE SCALE SHOWN ON THE DRAWINGS APPLIES ONLY TO FULL SIZE PLANS AND NOT TO THE REDUCED SIZE PLANS. DO NOT SCALE PLANS FOR CONSTRUCTION DIMENSIONS.
3. ANY REFERENCE TO STANDARDS THROUGHOUT THE PLANS OR SPECIAL PROVISIONS SHALL BE INTERPRETED TO BE THE LATEST STANDARDS OF THE ILLINOIS DEPARTMENT OF TRANSPORTATION.
4. IT SHALL BE THE CONTRACTOR'S RESPONSIBILITY TO VERIFY ALL DIMENSIONS AND CONDITIONS EXISTING IN THE FIELD PRIOR TO CONSTRUCTION AND ORDERING OF MATERIALS.
5. THE LOCATION AND ELEVATION OF THE VARIOUS UNDERGROUND UTILITIES AS SHOWN ON THE DRAWINGS ARE APPROXIMATE. THE CONTRACTOR SHALL USE SPECIAL CARE WHEN CONDUCTING CONSTRUCTION OPERATIONS NEAR THEM AND IS RESPONSIBLE FOR ANY DAMAGE CAUSED.
6. THE CONTRACTOR SHALL NOTIFY THE AGENCIES AND UTILITIES AT LEAST 10 DAYS PRIOR TO ANY CONSTRUCTION IN THE AREA AND SHALL COMPLY WITH ALL RESTRICTIONS FOR EQUIPMENT MOVEMENTS AND CLEARANCES IN REGARDS TO THEIR FACILITIES.
7. THE UTILITIES LOCATED WITHIN THE PROJECT LIMITS OR IMMEDIATELY ADJACENT TO THE PROJECT CONSTRUCTION LIMITS INCLUDE:

 COMED
 ATTN: DARRELL SENIOR
 PH: 309-827-1253

 VERIZON
 ATTN: DAVID DAY
 PH: 815-772-2078
8. 48 HOURS PRIOR TO THE START OF ANY EXCAVATION, THE CONTRACTOR SHALL CALL J.U.L.I.E. FOR VERIFICATION OF ALL UTILITY LOCATIONS IN THE FIELD.
9. EXISTING STRUCTURES (INCLUDING FOUNDATIONS, WELLS, CISTERN, WALLS, OR OTHER UNDERGROUND STRUCTURES) WITHIN THE RIGHT OF WAY SHALL BE REMOVED IN ACCORDANCE WITH ARTICLE 501.04 AND 501.05 OF THE STANDARD SPECIFICATIONS, WITHOUT ADDITIONAL COMPENSATION, UNLESS OTHERWISE NOTED IN THE PLANS OR SPECIAL PROVISIONS.
10. THE CONTRACTOR SHALL SEED ALL DISTURBED AREAS WITHIN THE PROJECT LIMITS.
11. THE FINAL TOP FOUR INCHES OF SOIL IN ANY AREA DISTURBED BY THE CONTRACTOR SHALL BE FERTILE, FRIABLE, NATURAL LOAM, SURFACE SOIL, REASONABLY FREE OF SUBSOIL, CLAY LUMPS, BRUSH WEEDS AND OTHER LITTER AND FREE OF ROOT STUMPS, STONES AND OTHER MATERIAL HARMFUL TO PLANT GROWTH. TOPSOIL MUST MEET REQUIREMENTS OF ARTICLE 1081.05.
12. NO OVERHAUL HAS BEEN COMPUTED AND NONE SHALL BE PAID FOR FROM ANY SOURCE.
13. THE CONTRACTOR SHALL BE RESPONSIBLE FOR PROTECTING UTILITY PROPERTY DURING CONSTRUCTION OPERATIONS AS OUTLINED IN ARTICLE 107.31 OF THE STANDARD SPECIFICATIONS.
14. THE CONTRACTOR SHALL ENSURE ALL PERMITS HAVE BEEN OBTAINED PRIOR TO COMMENCEMENT OF WORK
15. WHERE SECTION OR SUBSECTION MONUMENTS ARE ENCOUNTERED, THE ENGINEER SHALL BE NOTIFIED BEFORE SUCH MONUMENTS ARE REMOVED. THE CONTRACTOR SHALL PROTECT AND CAREFULLY PRESERVE ALL PROPERTY MARKERS, MONUMENTS AND RIGHT OF WAY PINS UNTIL THE OWNER, AN AUTHORIZED SURVEYOR, OR AGENT HAS WITNESSED OR OTHERWISE REFERENCED THEIR LOCATION. ANY PROPERTY MARKERS, SECTION OR SUBSECTION MONUMENTS UNLESS REFERENCED, DAMAGED BY THE CONTRACTOR SHALL BE REPLACED AT THE EXPENSE OF THE CONTRACTOR.
16. WHERE THE PROPOSED CONSTRUCTION MEETS AN EXISTING BITUMINOUS SURFACE, OR WHERE SAWING IS STATED ON THE PLANS, THE EXISTING SHALL BE SAWED IN A NEAT, STRAIGHT LINE. COST OF SAWING TO BE INCLUDED IN THE CONTRACT UNIT PRICE BID PER CUBIC YARD FOR EARTH EXCAVATION (SPECIAL).
17. THE CONTRACTOR SHALL COORDINATE WITH THE LAND OWNER PRIOR TO CONSTRUCTION TO CLEAR AREA OF ALL EQUIPMENT.
18. THE CONTRACTOR SHALL BE REQUIRED TO MAINTAIN ACCESS TO ALL PRIVATE AND COMMERCIAL PROPERTIES AT ALL TIMES DURING THE CONSTRUCTION OF THIS PROJECT.
19. ALL DAMAGE TO EXISTING PAVEMENT MARKINGS OUTSIDE THE REMOVAL LINE SHOWN ON THE PLANS SHALL BE REPLACED AT THE CONTRACTOR'S EXPENSE.
20. LAYOUT AND STAKING FOR ALL CONSTRUCTION OPERATIONS SHALL BE PROVIDED BY THE CONTRACTOR.
21. CLEARING OF BRUSH, BUSHES AND TREES WITH A DIAMETER LESS THAN 6" WILL NOT BE PAID FOR SEPARATELY PER SECTION 201 OF THE STANDARD SPECIFICATIONS.

- ~~22. PROPOSED END SECTIONS SHALL BE SLOPED TO MATCH THE PROPOSED CULVERTS AND STORM SEWER PIPE SLOPES. DRAINAGE STRUCTURES MAY REQUIRE REVISIONS TO MEET EXISTING FIELD CONDITIONS.~~
23. ALL SUBSURFACE DRAINS AND/OR FIELD TILES ENCOUNTERED IN THE ROADWAY EXCAVATION SHALL BE REMOVED AND CONSIDERED TO BE INCLUDED IN THE COST OF EARTH EXCAVATION (SPECIAL). THE CONTRACTOR SHALL BE RESPONSIBLE FOR CAPPING THE EXISTING SUBSURFACE DRAINS OR CONNECTING TO THE PROPOSED DITCHES AT THE LOCATIONS SHOWN IN THE PLANS OR AS DIRECTED BY THE OWNER. THIS WORK SHALL NOT BE MEASURED SEPARATELY FOR PAYMENT, BUT SHALL BE INCLUDED IN THE COST OF EARTH EXCAVATION (SPECIAL).
24. TRANSVERSE UNDERDRAINS SHALL MATCH THE CROSS SLOPE OF THE ROADWAY SURFACE.
- ~~25. REMOVAL OF END SECTIONS SHALL BE PAID PER FOOT UNDER PIPE CULVERT REMOVAL.~~
26. THE PROPOSED DRAINAGE STRUCTURES AND PIPES SHALL BE PROTECTED IMMEDIATELY AFTER THEY ARE CONSTRUCTED UNTIL THE SURFACES THAT DRAIN TO THEM ARE FULLY PAVED OR VEGETATED.
27. THE CONTRACTOR SHALL BE SOLELY RESPONSIBLE FOR JOB SITE SAFETY AS WELL AS SUPERVISION, DIRECTION AND MEANS/METHOD OF CONSTRUCTION.
28. QUANTITIES AND ASSOCIATED PAY ITEMS FOR EARTHWORK, LANDSCAPE RESTORATION, AND EROSION CONTROL WERE DEVELOPED ACCORDING TO THE NECESSARY GRADING FOR THE PROJECT PROPOSED AS SHOWN IN THE CROSS SECTIONS. AREAS DISTURBED BEYOND THE SLOPE INTERCEPTS SHALL HAVE EROSION CONTROL AND LANDSCAPING RESTORATION ACCORDING TO THE ADJACENT REQUIREMENTS SHOWN IN THE PLANS. THE GROUND SHALL BE GRADED AND RESTORED TO MATCH THE EXISTING PRE-CONSTRUCTION CONDITIONS. ALL WORK DESCRIBED ABOVE THAT IS BEYOND THE SLOPE INTERCEPTS WILL NOT BE PAID FOR SEPARATELY AND SHALL BE CONSIDERED INCIDENTAL TO EARTH EXCAVATION (SPECIAL).
29. ALL SAW CUTS SHALL BE INCLUDED IN THE COST OF THE VARIOUS REMOVAL ITEMS.

DENOTES WORK INCLUDED IN THE COST OF OTHER ITEMS.

FILE NAME = S:\JUL\1788-3799\3716\B1\MICRO\CAD0 Sheets\DR1245-sh-803-general.dgn



USER NAME = johnkp	DESIGNED - SLG	REVISED -
PLOT SCALE = 2.0000' / 1"	DRAWN - B.J.F.	REVISED -
PLOT DATE = 1/15/2015	CHECKED - RRD	REVISED -
	DATE - 01/15/2015	REVISED -

**STEPHENSON COUNTY
HIGHWAY DEPARTMENT**

GENERAL NOTES			
SCALE:	SHEET	OF	SHEETS
		STA.	TO STA.

F.A.S. RTE.	SECTION	COUNTY	TOTAL SHEETS	SHEET NO.
63	12-00180-00-BR	STEPHENSON	21	4
CONTRACT NO. 85608				
ILLINOIS FED. AID PROJECT				

20100110 TREE REMOVAL (6 TO 15 UNITS DIAMETER)		
STATION	UNIT	REMARKS
STA. 26+96 RT	6	
STA. 27+57 LT	6	
PROJECT TOTAL	12	

20400800 FURNISHED EXCAVATION		
STATION	CU YD	REMARKS
STA. 26+45 TO 28+30	75	
PROJECT TOTAL	75	

25100630 EROSION CONTROL BLANKET		
STATION	SQ YD	REMARKS
STA. 26+45 TO 28+30 LT	747	
STA. 26+45 TO 28+30 RT	567	
PROJECT TOTAL	1314	

28000250 TEMPORARY EROSION CONTROL SEEDING		
STATION	FOUND	REMARKS
STA. 26+45 TO 28+30 LT	16	
STA. 26+45 TO 28+30 RT	12	
PROJECT TOTAL	28	

28000305 TEMPORARY DITCH CHECKS		
STATION	CU YD	REMARKS
STA. 26+90 TO 27+30 RT	50	
PROJECT TOTAL	50	

28000400 PERIMETER EROSION BARRIER		
STATION	FOOT	REMARKS
STA. 26+45 TO 28+30 LT	245	
STA. 26+45 TO 28+30 RT	247	
PROJECT TOTAL	492	

28100107 STONE RIPRAP, CLASS A4		
STATION	SQ YD	REMARKS
STA. 27+25 TO 27+75 LT	63	
STA. 27+05 TO 27+55 RT	27	
PROJECT TOTAL	90	

28200200 FILTER FABRIC		
STATION	SQ YD	REMARKS
STA. 27+25 TO 27+75 LT	63	
STA. 27+05 TO 27+55 RT	27	
PROJECT TOTAL	90	

30300116 AGGREGATE SUBGRADE IMPROVEMENT 16"		
STATION	SO YD	REMARKS
STA. 26+45 TO 28+30 LT	46.5	
STA. 26+45 TO 28+30 RT	46.5	
PROJECT TOTAL	93	

35101400 AGGREGATE BASE COURSE, TYPE B		
STATION	TON	REMARKS
STA. 26+45 TO 28+30 LT	109.5	
STA. 26+45 TO 28+30 RT	109.5	
PROJECT TOTAL	219	

40600275 BITUMINOUS MATERIALS (PRIME COAT)		
STATION	POUND	REMARKS
STA. 26+45 TO 28+30 LT	875	
STA. 26+45 TO 28+30 RT	875	
PROJECT TOTAL	1750	

40600982 HOT-MIX ASPHALT SURFACE REMOVAL - BUTT JOINT		
STATION	SQ YD	REMARKS
STA. 26+35 TO 26+45	22.5	
STA. 28+30 TO 28+40	22.5	
PROJECT TOTAL	45	

40603080 HOT-MIX ASPHALT BINDER COURSE, IL-19.0, N50		
STATION	TON	REMARKS
STA. 26+45 TO 28+30 LT	27.5	
STA. 26+45 TO 28+30 RT	27.5	
PROJECT TOTAL	55	

40603310 HOT-MIX ASPHALT SURFACE COURSE, MIX "C", N50		
STATION	TON	REMARKS
STA. 26+45 TO 28+30 LT	18.5	
STA. 26+45 TO 28+30 RT	18.5	
PROJECT TOTAL	37	

48101200 AGGREGATE SHOULDERS, TYPE B		
STATION	TON	REMARKS
STA. 26+45 TO 28+30 LT	11.5	
STA. 26+45 TO 28+30 RT	11.5	
PROJECT TOTAL	23	

60100060 CONCRETE HEADWALLS FOR PIPE DRAINS		
STATION	EACH	REMARKS
STA. 27+06.56 LT	1	
STA. 27+06.56 RT	1	
STA. 27+75.32 LT	1	
STA. 27+75.32 RT	1	
PROJECT TOTAL	4	

60107600 PIPE UNDERDRAINS 4"		
STATION	FOOT	REMARKS
STA. 27+06.56	40	
STA. 27+75.32	40	
PROJECT TOTAL	80	

72400310 REMOVE SIGN PANEL - TYPE 1		
STATION	SQ FT	REMARKS
STA. 26+95 RT	9	
PROJECT TOTAL	9	

72400710 RELOCATE SIGN PANEL - TYPE 1		
STATION	SQ FT	REMARKS
STA. 27+00 RT	9	
PROJECT TOTAL	9	

72800100 TELESCOPING STEEL SIGN SUPPORT		
STATION	FOOT	REMARKS
STA. 27+00 RT	17	
PROJECT TOTAL	17	

73700100 REMOVE GROUND MOUNTED SIGN SUPPORT		
STATION	EACH	REMARKS
STA. 27+00 RT	1	
PROJECT TOTAL	1	

78001110 PAINT PAVEMENT MARKING LINE		
STATION	FOOT	REMARKS
STA. 26+45 TO 28+00 LT	185	SOLID WHITE
STA. 26+45 TO 28+00	47	SKIP-DASH YELLOW
STA. 26+45 TO 28+00 RT	185	SOLID WHITE
PROJECT TOTAL	417	

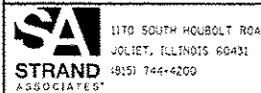
A2006912 TREE, QUERCUS PALUSTRIS (PIN OAK), 1 1/2" CALIPER, BALLED AND BURLAPPED		
STATION	EACH	REMARKS
STA. 26+77 RT	1	
STA. 26+85 RT	1	
PROJECT TOTAL	2	

X2020410 EARTH EXCAVATION (SPECIAL)		
STATION	CU YD	REMARKS
STA. 26+45 TO 28+30	389	
PROJECT TOTAL	389	

X2501000 SEEDING, CLASS 2 (SPECIAL)		
STATION	ACRE	REMARKS
STA. 26+45 TO 28+30 LT	0.13	
STA. 26+45 TO 28+30 RT	0.12	
PROJECT TOTAL	0.25	

X2502019 SEEDING, CLASS 4B (SPECIAL)		
STATION	ACRE	REMARKS
STA. 27+39 TO 27+87 LT	0.13	
STA. 27+04 TO 27+47 RT	0.12	
PROJECT TOTAL	0.25	

FILE NAME: S:\JCI\3710-399\3716\181\Micro\X200 Sheets\BR2245-INT-B04-schedule.dgn



1170 SOUTH HOBOLT ROAD
JOLIET, ILLINOIS 60431
(815) 744-6200

USER NAME: rjand
DESIGNED - SLG
DRAWN - BJB
CHECKED - RRD
DATE - 01/22/2015

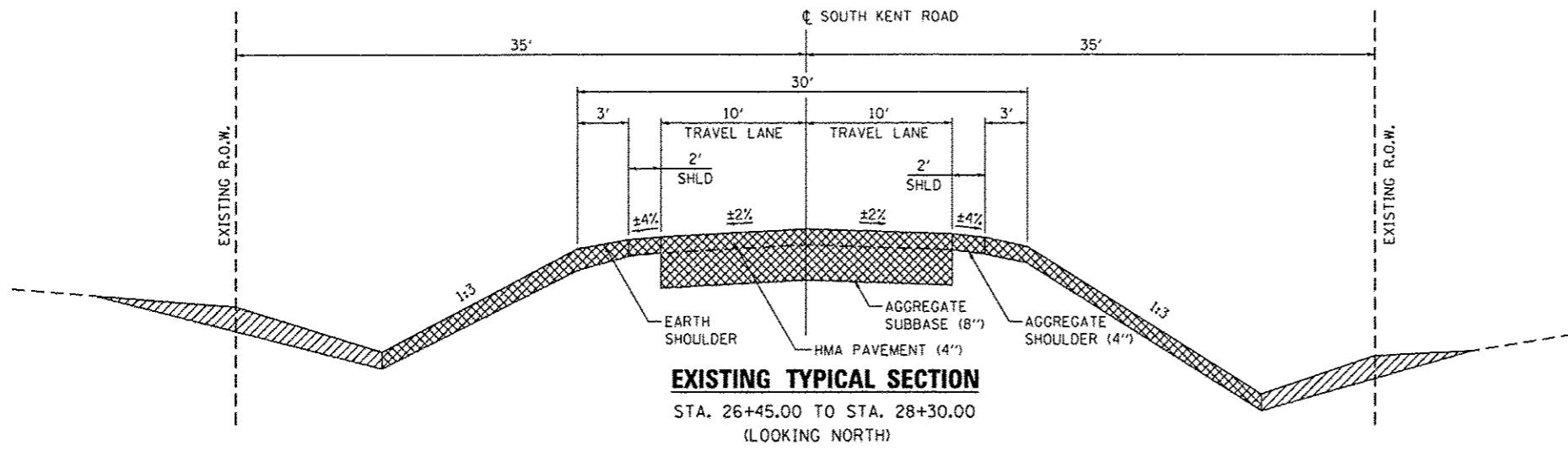
REVISED -
REVISED -
REVISED -
REVISED -

**STEPHENSON COUNTY
HIGHWAY DEPARTMENT**

SCHEDULE OF QUANTITIES

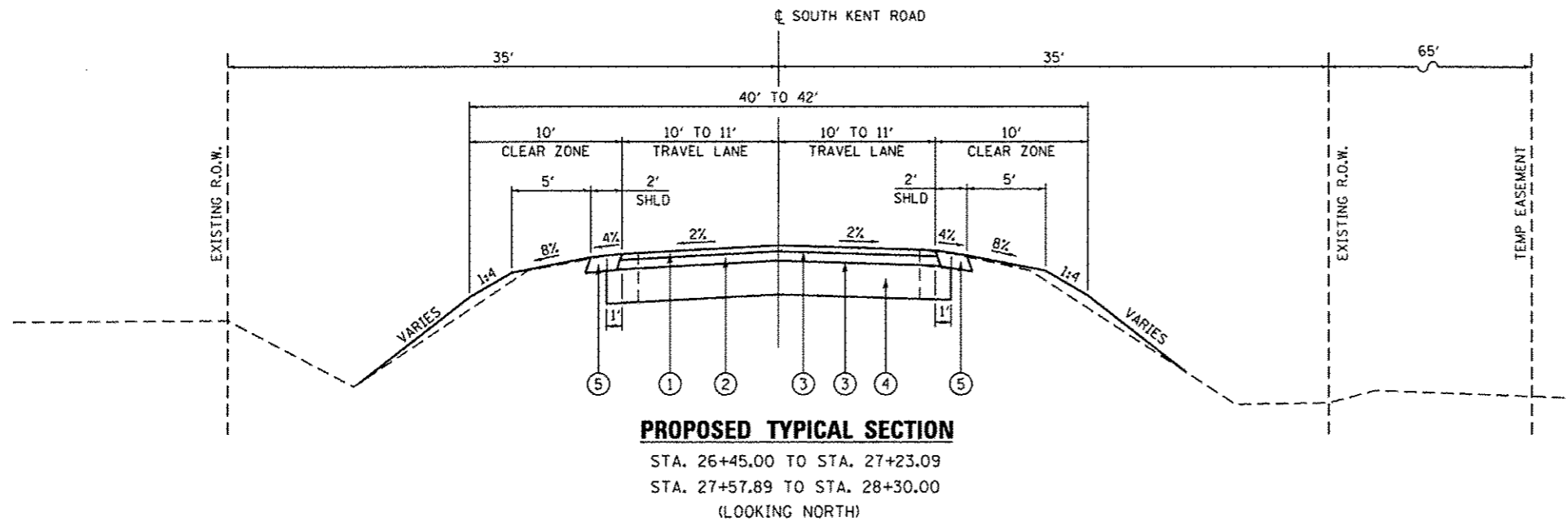
P.A.S. RTE.	SECTION	COUNTY	TOTAL SHEETS	SHEET NO.
63	12-00180-00-BR	STEPHENSON	21	5
CONTRACT NO. 85608				
ILLINOIS FED. AID PROJECT				

SCALE: SHEET OF SHEETS STA. TO STA.



LEGEND

	REMOVAL OF PAVEMENT, SHOULDER, SUBBASE, AND TOPSOIL TO BE PAID FOR AS EARTH EXCAVATION (SPECIAL)
	EXCAVATION FOR CREEK WORK



PAVEMENT MIXTURE REQUIREMENTS

	BINDER	SURFACE
PG:	PG 58-28	PG 58-28
MIXTURE COMPOSITION (GRADATION MIXTURE)	IL 19.0	IL 12.5
FRICTION AGGREGATE	—	C

PAVEMENT STRUCTURAL DESIGN

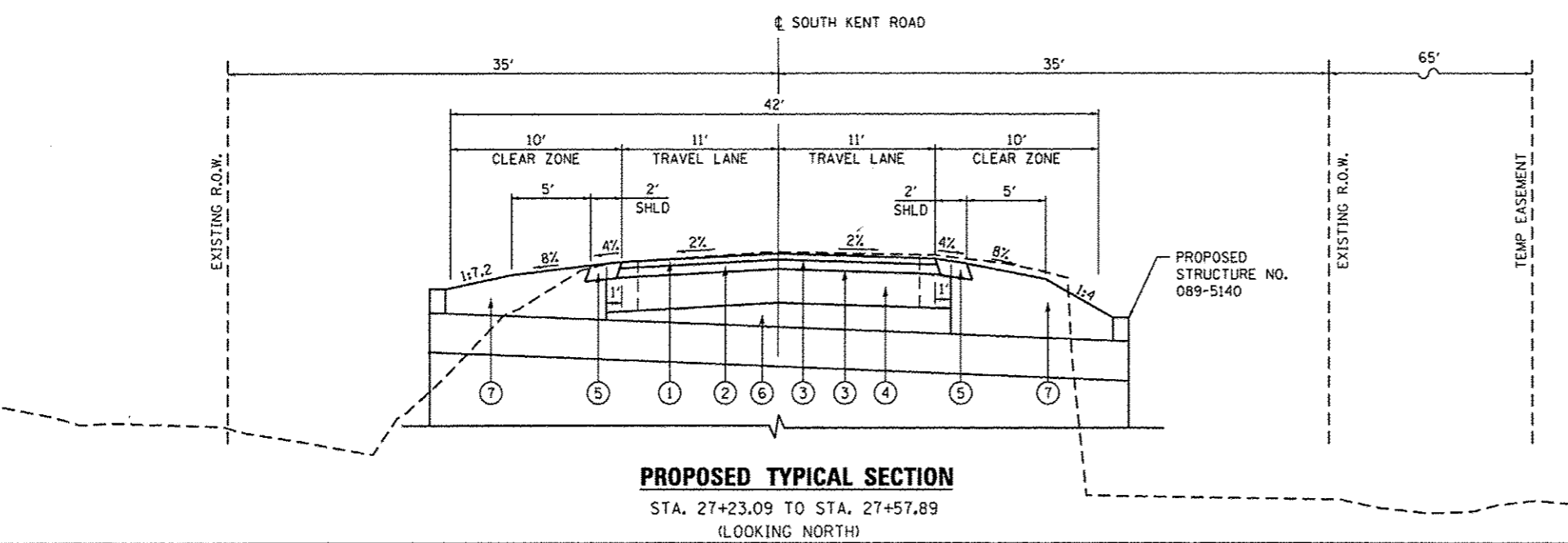
STRUCTURAL DESIGN TRAFFIC (S.D.T.) = YEAR 2025

CLASS IV
 ADT: 184 (3% MU, 9% SU)
 ERI: (ASSUMED) 2KSI
 TF: NOT REQUIRED
 HMA MIX TEMP. 72°F

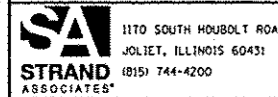
USE:
 1 1/2" HOT-MIX ASPHALT SURFACE COURSE, MIX "C", N50
 1 1/4" HOT-MIX BINDER COURSE, IL-19.0, N50
 8" AGGREGATE BASE COURSE, TYPE B

PROPOSED LEGEND

- ① 1 1/2" HOT-MIX ASPHALT SURFACE COURSE, MIX "C", N50
- ② 1 1/4" HOT-MIX ASPHALT BINDER COURSE, IL-19.0, N50
- ③ BITUMINOUS MATERIALS (PRIME COAT)
- ④ 8" AGGREGATE BASE COURSE, TYPE B
- ⑤ 4" AGGREGATE SHOULDERS, TYPE B
- ⑥ AGGREGATE SUBGRADE IMPROVEMENT 16"
- ⑦ FURNISHED EXCAVATION



FILE NAME = S:\JUL\37788-3799\3716\BRI\Hors\CA00 Sheets\012345-akt-895-typtical.dgn

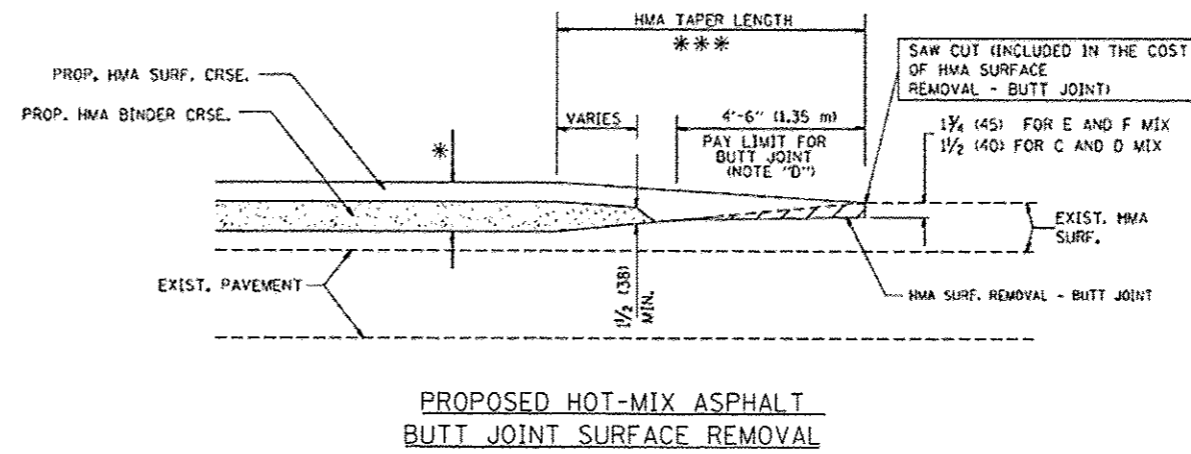


USER NAME = jahnkp	DESIGNED - SLG	REVISED -
PLOT SCALE = 10.0000' / in.	DRAWN - BJF	REVISED -
PLOT DATE = 1/15/2015	CHECKED - RRD	REVISED -
	DATE - 01/15/2015	REVISED -

STEPHENSON COUNTY HIGHWAY DEPARTMENT

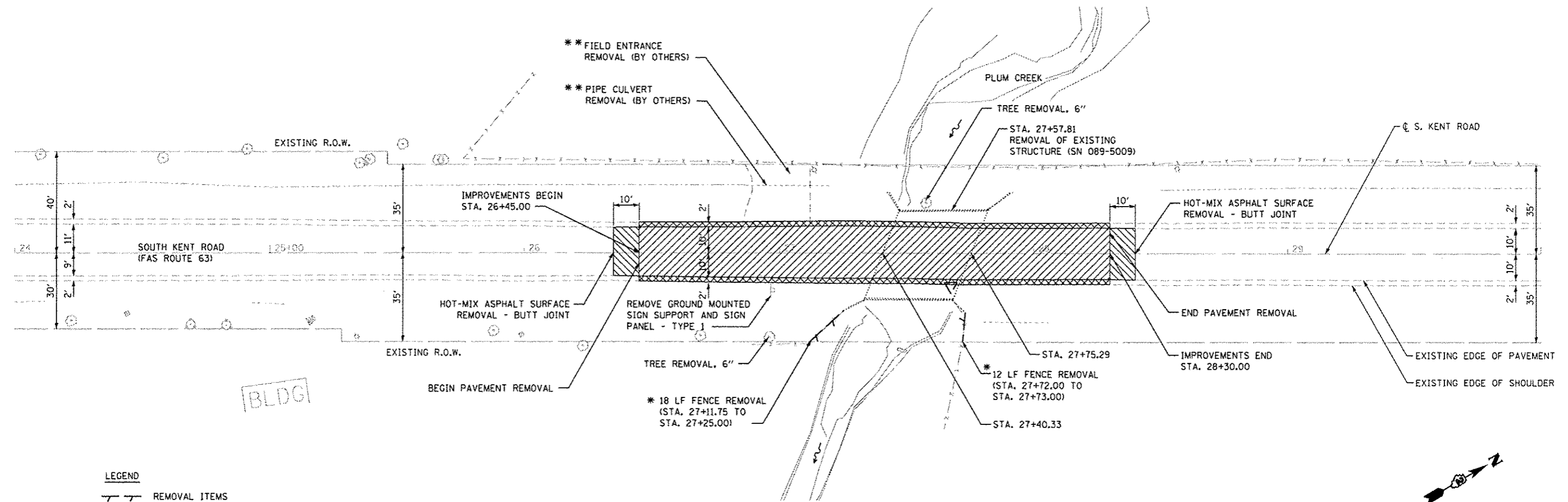
TYPICAL SECTIONS	
SCALE:	SHEET OF SHEETS STA. TO STA.

F.A.S. RTE. 63	SECTION 12-00180-00-BR	COUNTY STEPHENSON	TOTAL SHEETS 21	SHEET NO. 6
CONTRACT NO. 85608				
ILLINOIS FED. AID PROJECT				



- NOTES**
- A: MAINLINE ROADWAYS AND MAJOR SIDE ROADS.
 - B: MINOR SIDE ROADS.
 - C: THE TEMP. RAMP SHALL BE CONSTRUCTED IMMEDIATELY UPON REMOVAL OF THE EXISTING HMA SURFACE.
 - D: THE BUTT JOINT SHALL BE CONSTRUCTED IMMEDIATELY PRIOR TO PLACING THE PROPOSED HMA COURSES.
 - E: TAPER THE TEMP. RAMP AT A RATE OF 3'-0" PER 1 INCH OF MILLING THICKNESS.
 - F: INSTALLATION AND REMOVAL OF THE 4'-6" TEMP. RAMP IS INCLUDED IN COST OF HMA SURFACE REMOVAL, BUTT JOINT.
 - G: SEE ARTICLE 406.08 AND 406.14 OF THE STANDARD SPECIFICATIONS FOR "HMA AND/OR PCC SURFACE REMOVAL, BUTT JOINT".
- * SEE TYPICAL SECTIONS FOR MILLING THICKNESS.
 - * * * 20'-0" PER 1 (25) RESURFACING (NOTE "A")
 - 10'-0" PER 1 (25) RESURFACING (NOTE "B")

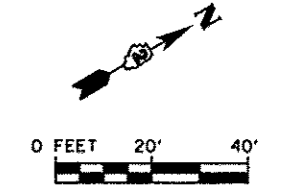
PROPOSED HOT-MIX ASPHALT BUTT JOINT SURFACE REMOVAL



BLDG

- LEGEND**
- REMOVAL ITEMS
 - PAVEMENT REMOVAL [PAID FOR AS EARTH EXCAVATION (SPECIAL)]
 - AGGREGATE SHOULDER REMOVAL [PAID FOR AS EARTH EXCAVATION (SPECIAL)]
 - HOT-MIX ASPHALT SURFACE REMOVAL - BUTT JOINT

* * * FIELD ENTRANCE AND PIPE CULVERT ARE TO BE REMOVED BY OTHERS PRIOR TO THIS PROJECT.



* FENCE REMOVAL LENGTH MAY VARY BASED ON LOCATION OF FENCE POSTS.

FILE NAME = S:\JUL13\788-37\PA\37161\B1\K1\c\c\CA00 Sheets\B12\15-01-007-Removal.dgn



USER NAME = johnkp	DESIGNED - SLG	REVISED -
PLLOT SCALE = 48.0000' / in.	DRAWN - BJJ	REVISED -
PLLOT DATE = 1/15/2015	CHECKED - RRD	REVISED -
	DATE - 01/15/2015	REVISED -

STEPHENSON COUNTY HIGHWAY DEPARTMENT

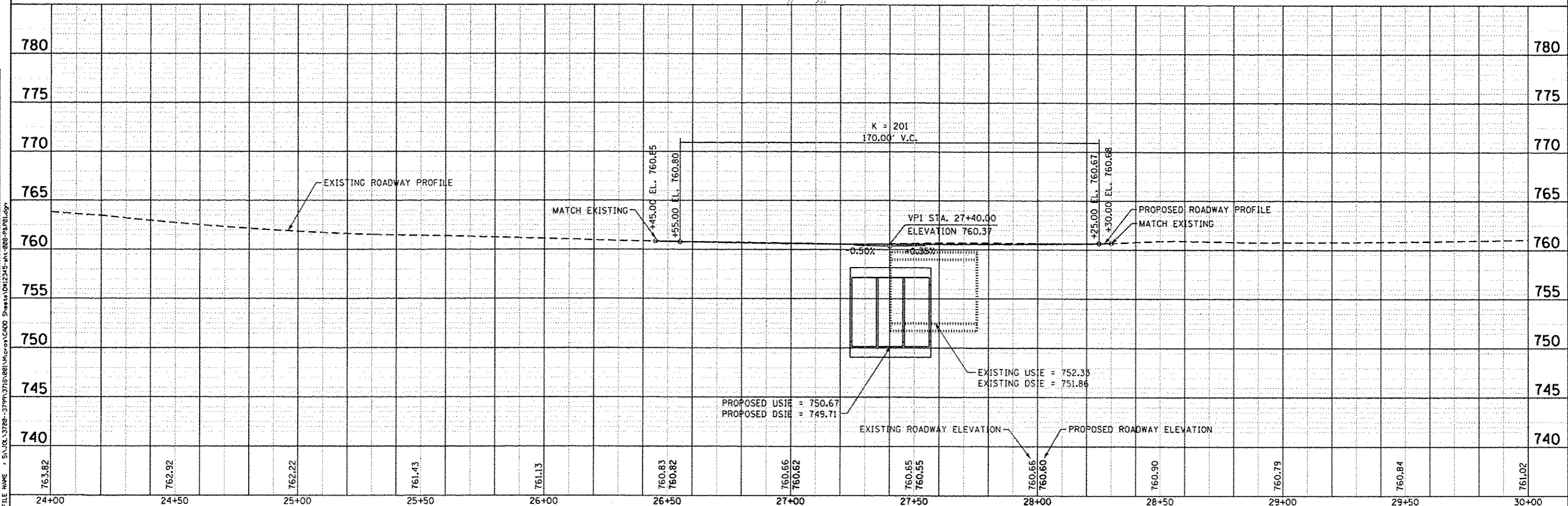
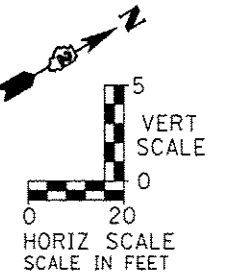
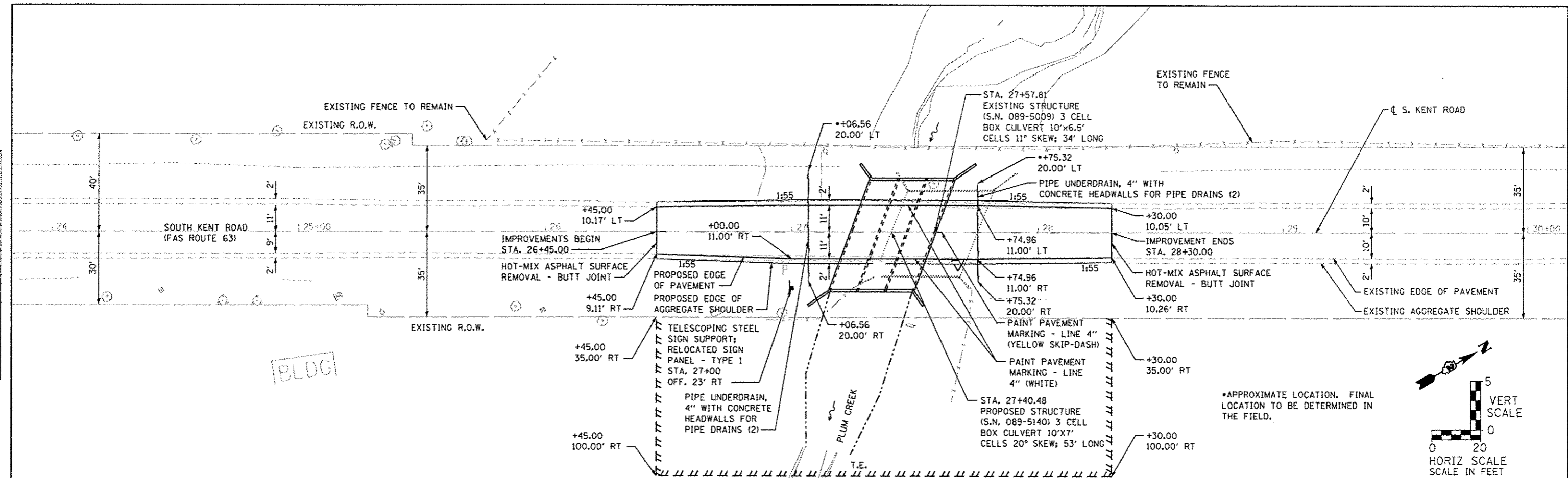
REMOVAL PLAN

SCALE:	SHEET	OF	SHEETS	STA.	TO STA.
--------	-------	----	--------	------	---------

F.A.S. RTE.	SECTION	COUNTY	TOTAL SHEETS	SHEET NO.
63	12-00180-00-BR	STEPHENSON	21	8
CONTRACT NO. 85608			ILLINOIS FED. AID PROJECT	

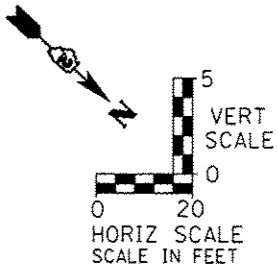
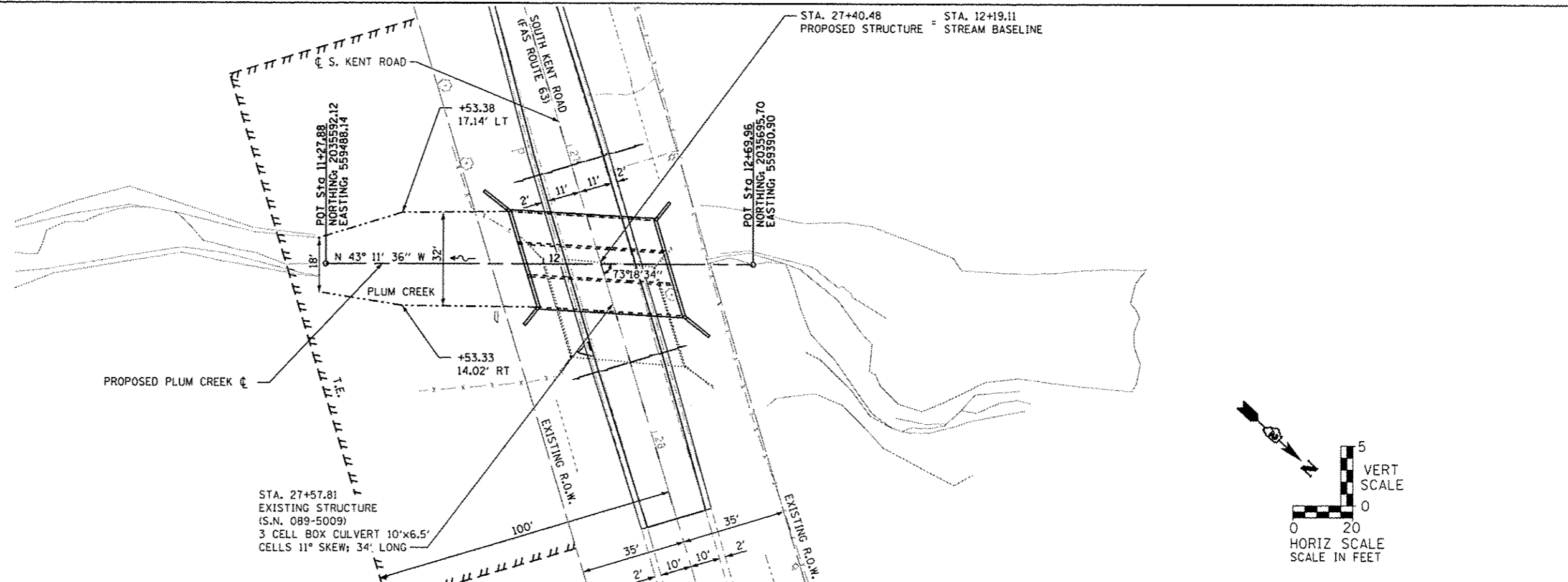
PLAN	DATE
REVISED	
NOTED	
NO. 1	
NO. 2	
NO. 3	
NO. 4	
NO. 5	
NO. 6	
NO. 7	
NO. 8	
NO. 9	
NO. 10	

PROFILE	DATE
REVISED	
NOTED	
NO. 1	
NO. 2	
NO. 3	
NO. 4	
NO. 5	
NO. 6	
NO. 7	
NO. 8	
NO. 9	
NO. 10	

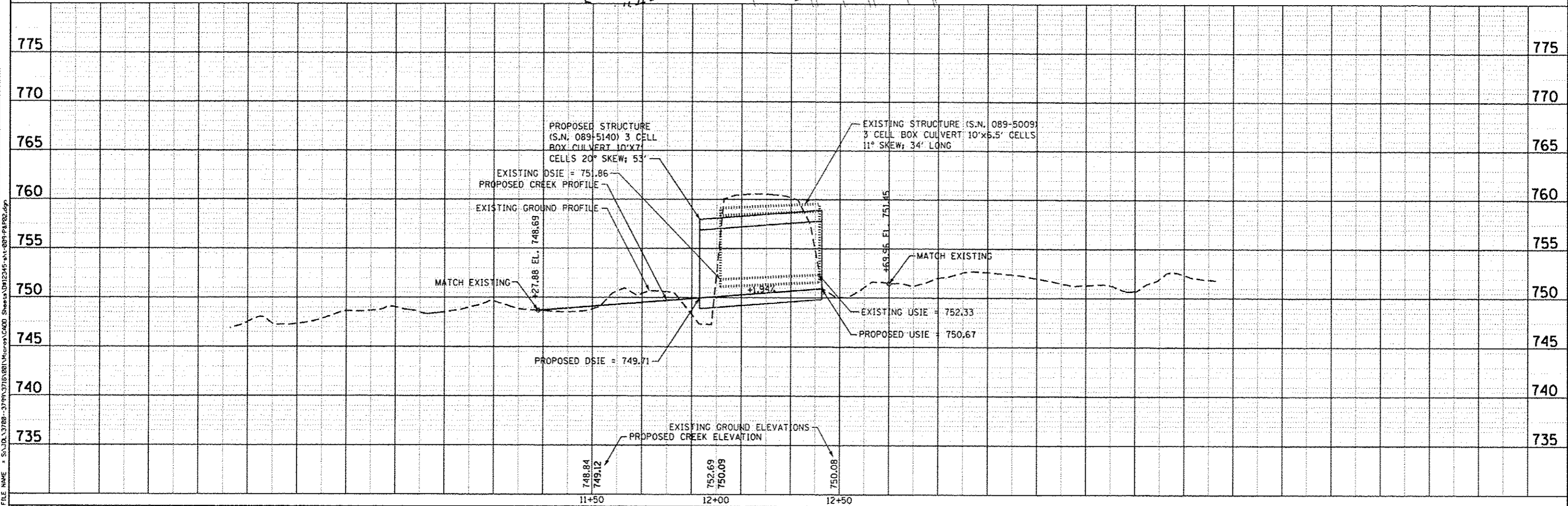


1170 SOUTH HOUBOLT ROAD JOLIET, ILLINOIS 60431 (815) 744-4200	USER NAME = johknp MODEL NAME = Default PLOT SCALE = 48.0000' / 1"	DESIGNED - SLG DRAWN - BJF CHECKED - RRD DATE - 01/15/2015	REVISED - REVISED - REVISED - REVISED -	STEPHENSON COUNTY HIGHWAY DEPARTMENT	KENT ROAD PLAN AND PROFILE	F.A.S. RTE. = 63 SECTION = 12-00180-00-BR COUNTY = STEPHENSON CONTRACT NO. = 85608	TOTAL SHEETS = 21 SHEET NO. = 9
	PLOT DATE = 1/15/2015	DATE - 01/15/2015	SCALE: 20'-H 5'-V SHEET OF SHEETS STA. TO STA.			ILLINOIS FED. AID PROJECT	

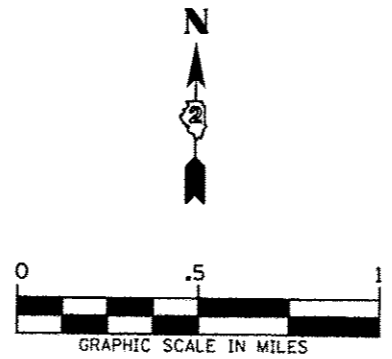
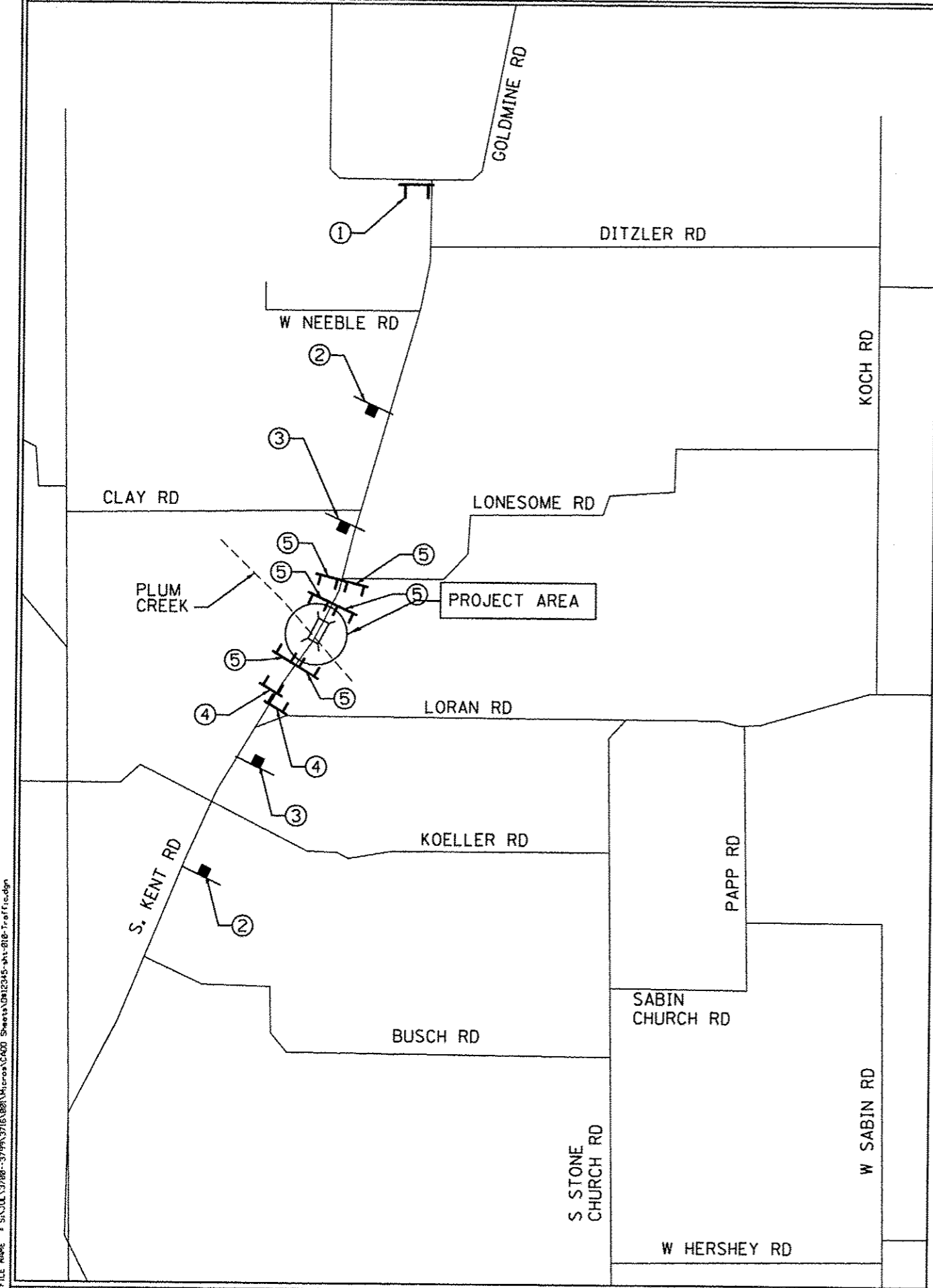
PLAN
 DATE
 BT
 SUBMITTED
 PLOTTED
 GRAPHS CHECKED
 ALIGNED CHECKED
 PLOTTED FILE NAME
 NO.



PROFILE
 DATE
 BT
 SUBMITTED
 PLOTTED
 GRAPHS CHECKED
 STRUCTURE NOTATIONS CHECKED
 NO.



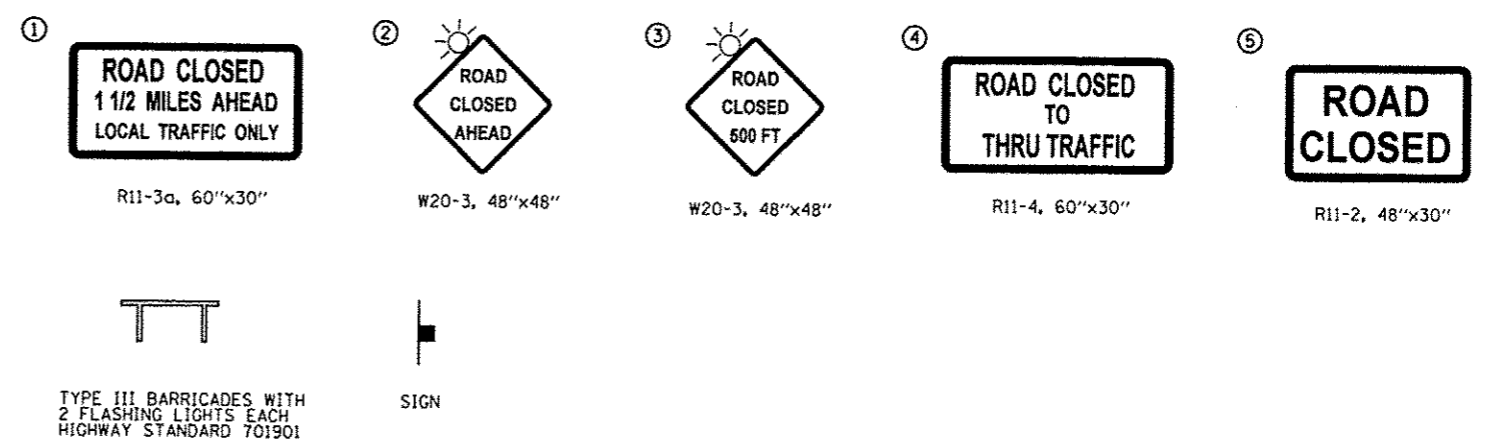
STRAND ASSOCIATES* 1170 SOUTH HOUBOLT ROAD JOLIET, ILLINOIS 60431 (815) 744-4200	USER NAME = johnhp MODEL NAME = Default PLOT SCALE = 48.0000" / in. PLOT DATE = 1/15/2015	DESIGNED - SLG DRAWN - BJF CHECKED - RRD DATE - 01/15/2015	REVISED - REVISED - REVISED - REVISED -	STEPHENSON COUNTY HIGHWAY DEPARTMENT	PLUM CREEK PLAN AND PROFILE	F.A.S. RTE. = 63 SECTION = 12-00180-00-BR COUNTY = STEPHENSON CONTRACT NO. = 85608
	SCALE: 20'-H 5'-V SHEET OF SHEETS STA. TO STA.		TOTAL SHEETS = 21 SHEET NO. = 10			
	ILLINOIS FED. AID PROJECT					



NOTES

1. SEE THE APPLICABLE STANDARDS FOR USE OF FLASHING LIGHTS.
2. THE CONTRACTOR SHALL BE RESPONSIBLE FOR AND SHALL REPLACE ANY SIGNS THAT ARE SUPPLIED BY OTHERS AND DAMAGED BY THE CONTRACTOR'S WORK FORCE OR BY SUB CONTRACTORS DURING RELOCATION OR CONSTRUCTION OPERATIONS.

SIGN LEGEND



FILE NAME = S:\JUL13780-3799\3716\888\Micro\AC000_Sheet\012345-ht-010-Traffic.dgn

SA STRAND ASSOCIATES
 1170 SOUTH HOUBOLT ROAD
 JOLIET, ILLINOIS 60431
 (815) 744-4200

USER NAME = johnkp	DESIGNED - SLG	REVISED -
PLOT SCALE = 10,0000' / 1"	DRAWN - BJF	REVISED -
PLOT DATE = 1/15/2015	CHECKED - RRD	REVISED -
	DATE - 01/15/2015	REVISED -

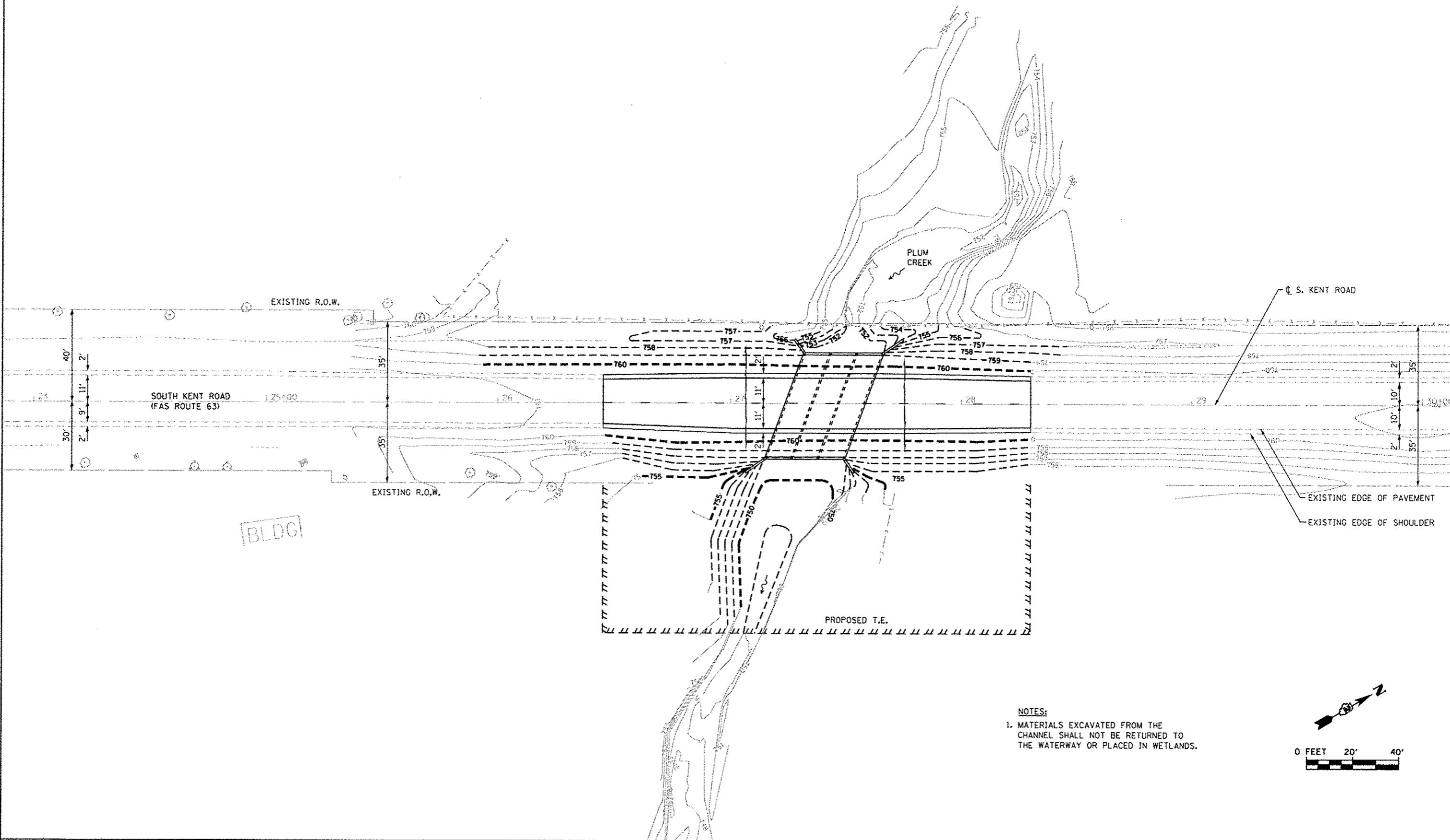
**STEPHENSON COUNTY
HIGHWAY DEPARTMENT**

TRAFFIC CONTROL PLAN

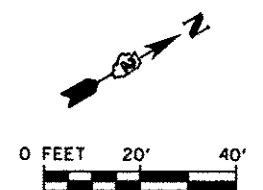
SCALE: SHEET OF SHEETS STA. TO STA.

F.A.S. RTE.	SECTION	COUNTY	TOTAL SHEETS	SHEET NO.
63	I2-00180-00-BR	STEPHENSON	21	11
CONTRACT NO. 85608				
ILLINOIS FED. AID PROJECT				

FILE NAME = S:\JDA_1788-3798\3715\281\Micro\CA08 Sheets\01\245-avl-011-Grading.dgn



- NOTES:**
 1. MATERIALS EXCAVATED FROM THE CHANNEL SHALL NOT BE RETURNED TO THE WATERWAY OR PLACED IN WETLANDS.



SA STRAND ASSOCIATES
 1170 SOUTH HOUBOLT ROAD
 JOLIET, ILLINOIS 60431
 (615) 744-4200

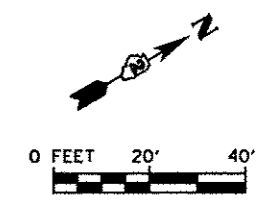
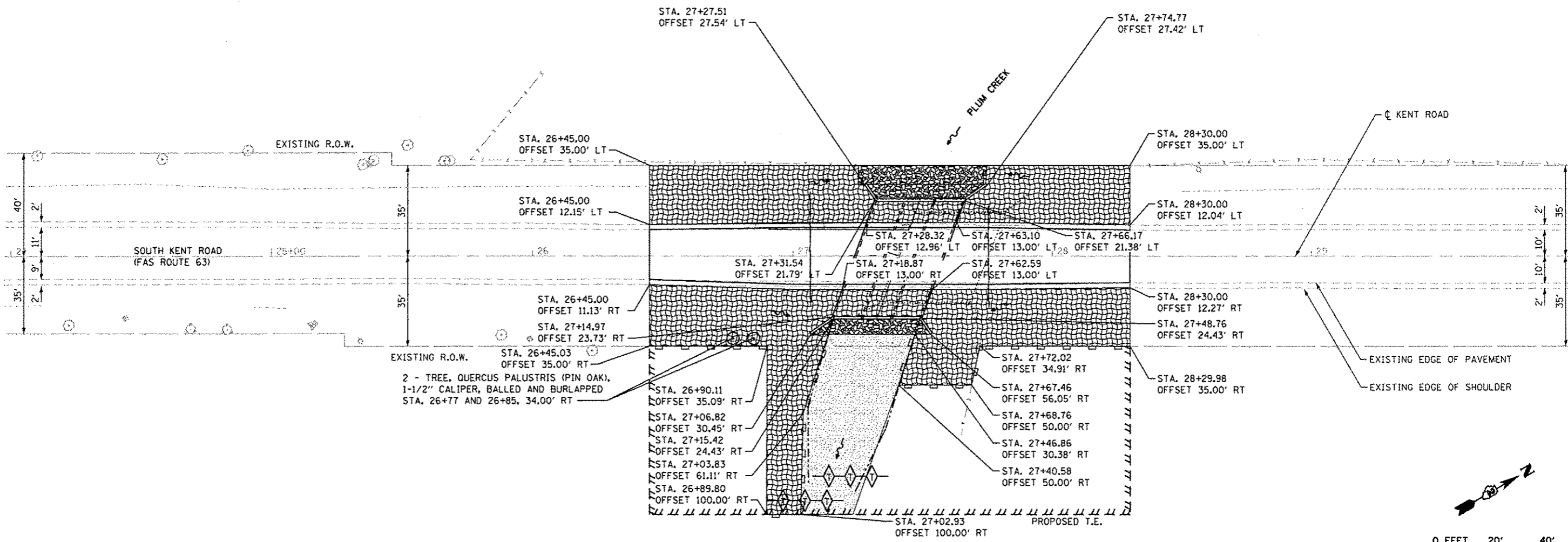
USER NAME = johnkp	DESIGNED - SLG	REVISED - 01-09-2015
DRAWN - BJF	CHECKED - RRD	REVISED -
PLOT SCALE = 1/8" = 10'	DATE - 01/15/2015	REVISED -
PLOT DATE = 1/15/2015		

STEPHENSON COUNTY HIGHWAY DEPARTMENT

GRADING PLAN

SCALE: SHEET OF SHEETS STA. TO STA.

F.A.S. RTE.	SECTION	COUNTY	TOTAL SHEETS	SHEET NO.
63	12-00180-00-BR	STEPHENSON	21	12
CONTRACT NO. 85608				
ILLINOIS FED. AID PROJECT				



EROSION CONTROL NOTES

THE SOIL EROSION AND SEDIMENT CONTROL PRACTICES WILL BE INSPECTED WEEKLY AND AFTER 1/2" OF RAIN OR MORE BY THE INDIVIDUAL ON SITE IN CHARGE OF SOIL EROSION AND SEDIMENT CONTROL DURING THE CONSTRUCTION OF THE PROJECT.

PERIMETER EROSION BARRIER SHALL COMPLY WITH SECTION 280 OF THE STANDARD SPECIFICATIONS AND SHALL BE PLACED AS SHOWN ON THE EROSION CONTROL PLAN AND IN ACCORDANCE WITH STATIONS SHOWN ON THE SCHEDULE OF QUANTITIES SHEET OR AS DIRECTED BY THE ENGINEER.

SILT FENCE SHALL BE INSTALLED FOLLOWING THE COMPLETION AND STABILIZATION OF ALL AREAS ADJACENT TO THE ON-SITE DRAINAGES. THE SILT FENCE WILL REMAIN IN PLACE UNTIL THE CONTRIBUTING AREA IS STABILIZED.

FOR SEEDING, CLASS 2 (SPECIAL) AND SEEDING, CLASS 4B (SPECIAL) SEE SPECIAL PROVISIONS.

EROSION CONTROL BLANKET SHALL BE PLACED IN DITCHES AND TO ALL DISTURBED AREAS AS SHOWN ON THIS EROSION CONTROL PLAN SHEET AND IN ACCORDANCE WITH SECTION 251 OF THE STANDARD SPECIFICATIONS FOR ROAD AND BRIDGE CONSTRUCTION. THE USE OF GREEN DYE IN THE EROSION CONTROL BLANKET IS NOT ACCEPTABLE.

THE USE OF ASPHALT AS A BINDER IS NOT ACCEPTABLE.



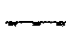

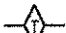

TEMPORARY DITCH CHECKS SHALL COMPLY WITH SECTION 280 OF THE STANDARD SPECIFICATIONS FOR ROAD AND BRIDGE CONSTRUCTION AND STANDARD 280001 LOCATED IN THE PLANS.

TEMPORARY DITCH CHECKS SHALL BE PLACED AT STATIONS CALLED OUT OR AS DIRECTED BY THE ENGINEER.

STOCKPILES OF SOIL AND OTHER BUILDING MATERIALS TO REMAIN IN PLACE MORE THAN THREE (3) DAYS SHALL BE FURNISHED WITH EROSION AND SEDIMENT CONTROL MEASURES (I.E. PERIMETER SILT FENCE). STOCKPILES TO REMAIN IN PLACE FOR 14 DAYS OR MORE SHALL RECEIVE TEMPORARY SEEDING.

ALL ADJACENT STREETS MUST BE KEPT CLEAR OF DEBRIS. INSPECTED DAILY AND CLEANED WHEN NECESSARY.

LEGEND

-  SEEDING, CLASS 2 (SPECIAL) AND EROSION CONTROL BLANKET
-  SEEDING, CLASS 4B (SPECIAL)
-  PERIMETER EROSION BARRIER (PEB)
-  FLOW ARROW
-  TEMPORARY DITCH CHECKS
-  STONE RIPRAP, CLASS A4 AND FILTER FABRIC

BILL OF MATERIAL

ITEM	UNIT	QUANTITY
EROSION CONTROL BLANKET	SQ YD	1314
TEMPORARY DITCH CHECKS	FOOT	50
TEMPORARY EROSION CONTROL SEEDING	POUND	28
PERIMETER EROSION BARRIER	FOOT	492
STONE RIPRAP, CLASS A4	SQ YD	90
FILTER FABRIC	SQ YD	90
SEEDING, CLASS 2 (SPECIAL)	ACRE	0.25
SEEDING, CLASS 4B (SPECIAL)	ACRE	0.25

FILE NAME = S:\JUL\13788-37193\3715.081\13788-37193-3715-081-012 Erosion.dgn



1170 SOUTH HOUBOLT ROAD
JOLIET, ILLINOIS 60431
(815) 744-4200

USER NAME = johnkp	DESIGNED - SLG	REVISED -
PLOT SCALE = 48.0000" / in.	DRAWN - B.J.F.	REVISED -
PLOT DATE = 1/15/2015	CHECKED - RRD	REVISED -
	DATE - 01/15/2015	REVISED -

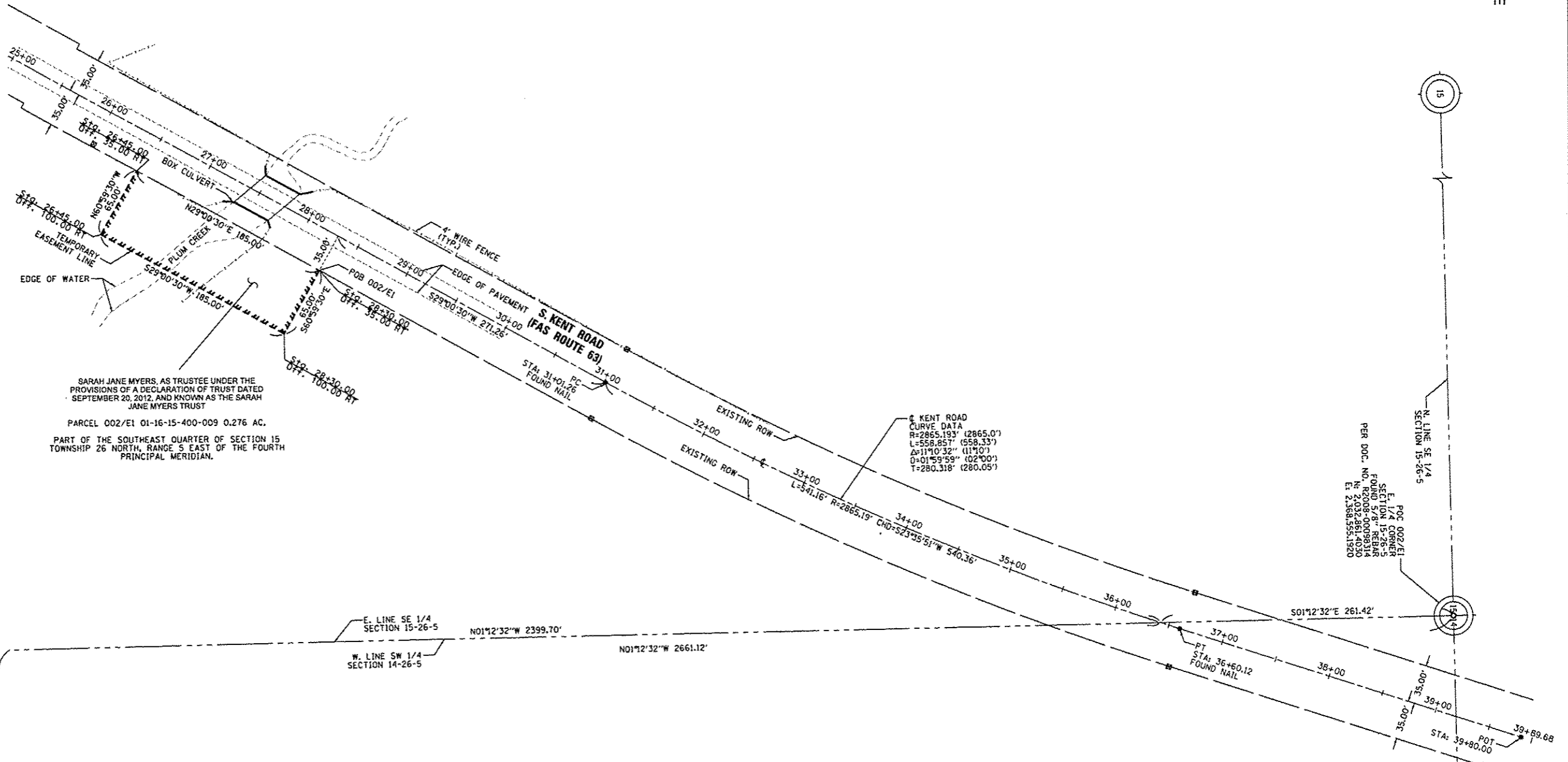
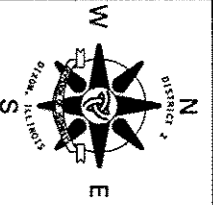
**STEPHENSON COUNTY
HIGHWAY DEPARTMENT**

EROSION CONTROL PLAN

F.A.S. RTE.	SECTION	COUNTY	TOTAL SHEETS	SHEET NO.
63	12-00180-00-BR	STEPHENSON	21	13
			CONTRACT NO. 85608	
ILLINOIS FED. AID PROJECT				

SCALE: SHEET OF SHEETS STA. TO STA.

Township 26 North, Range 5 East of the 4th P.M.



SARAH JANE MYERS, AS TRUSTEE UNDER THE PROVISIONS OF A DECLARATION OF TRUST DATED SEPTEMBER 20, 2012, AND KNOWN AS THE SARAH JANE MYERS TRUST
 PARCEL 002/E1 01-16-15-400-009 0.276 AC.
 PART OF THE SOUTHEAST QUARTER OF SECTION 15 TOWNSHIP 26 NORTH, RANGE 5 EAST OF THE FOURTH PRINCIPAL MERIDIAN.

S. KENT ROAD
 CURVE DATA
 R=2865.193' (2865.0')
 L=558.857' (558.33')
 Δ=11°10'32" (11°10')
 ΔI=01°59'59" (02°00')
 T=280.318' (280.05')

SE CORNER
 SECTION 15
 FOUND 1" STEEL PILING
 PER MONUMENT RECORD
 N 2,030,200.8170
 E 2,368,611.3390

E 1/4 CORNER
 SECTION 15-26-5
 FOUND 1" REBAR
 PER DOC. NO. N 2,032,861.4030
 E 2,368,555.1920

SURVEYOR'S STATEMENT

I, DAVID A. CLAASSEN, HEREBY STATE THAT I AM A PROFESSIONAL LAND SURVEYOR OF THE STATE OF ILLINOIS; THAT THE SURVEY OF S. KENT ROAD (FAS ROUTE 63) WAS MADE BY ME OR UNDER MY DIRECT SUPERVISION; THAT THE LAND CORNER TIES AS SHOWN HEREON, ARE A TRUE AND CORRECT REPRESENTATION OF SAID SURVEY; AND THAT THE PLAT IS IN ACCORDANCE WITH THE LAND ACQUISITION POLICIES AND PROCEDURES MANUAL, OR THE DEPARTMENT'S DISTRICT POLICIES.
 DATED THIS 19th DAY OF DECEMBER, 2014



DAVID A. CLAASSEN - ILLINOIS PROFESSIONAL LAND SURVEYOR NO. 35-2962
 MY LICENSE EXPIRES 11/30/16

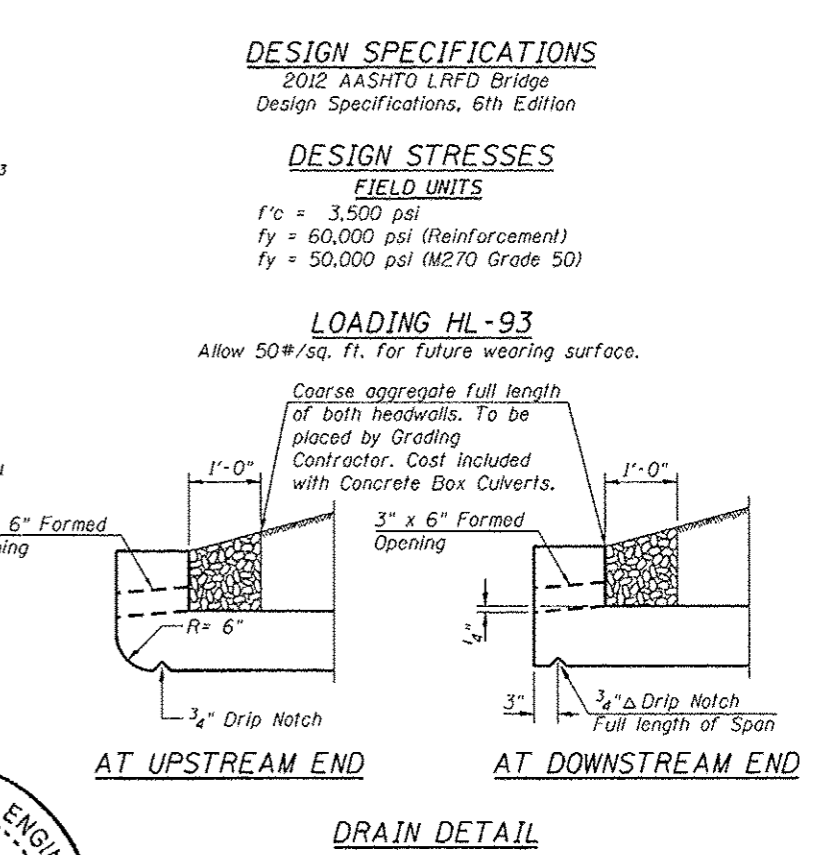
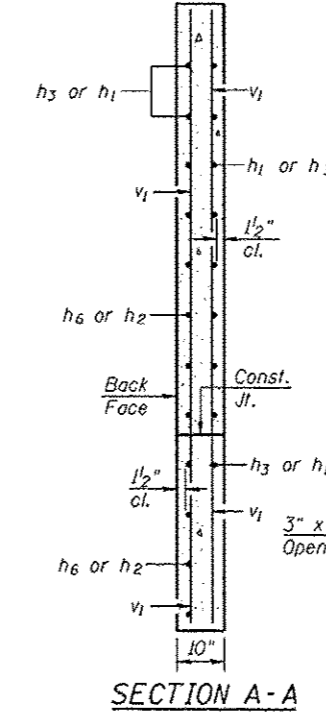
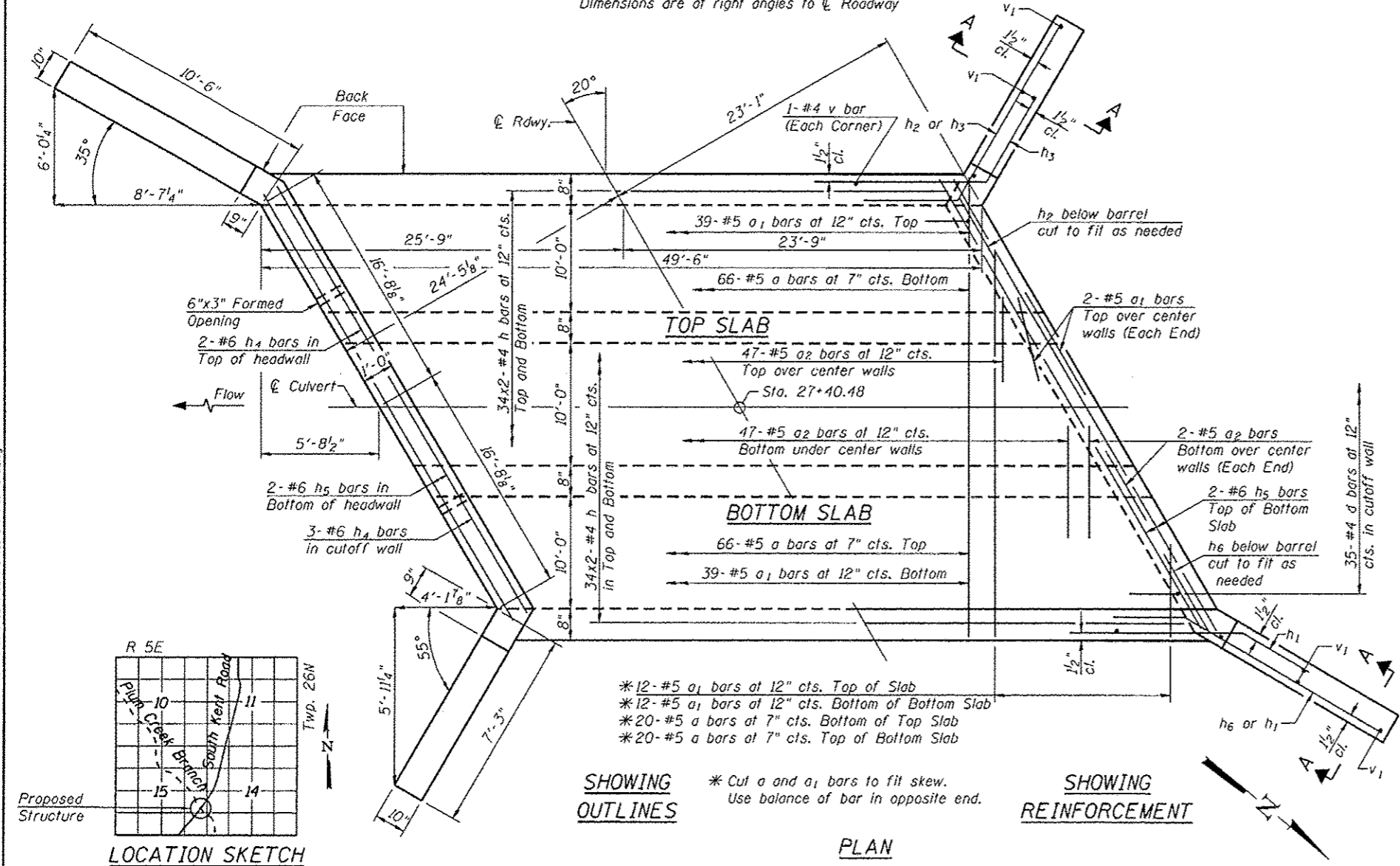
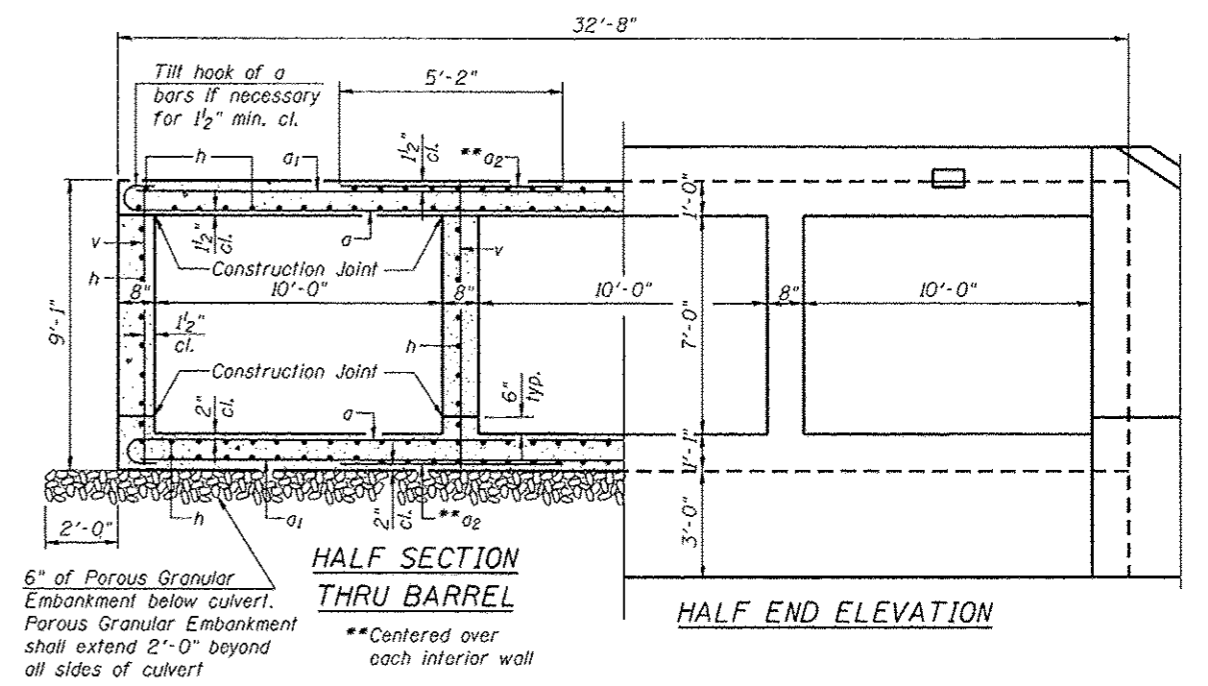
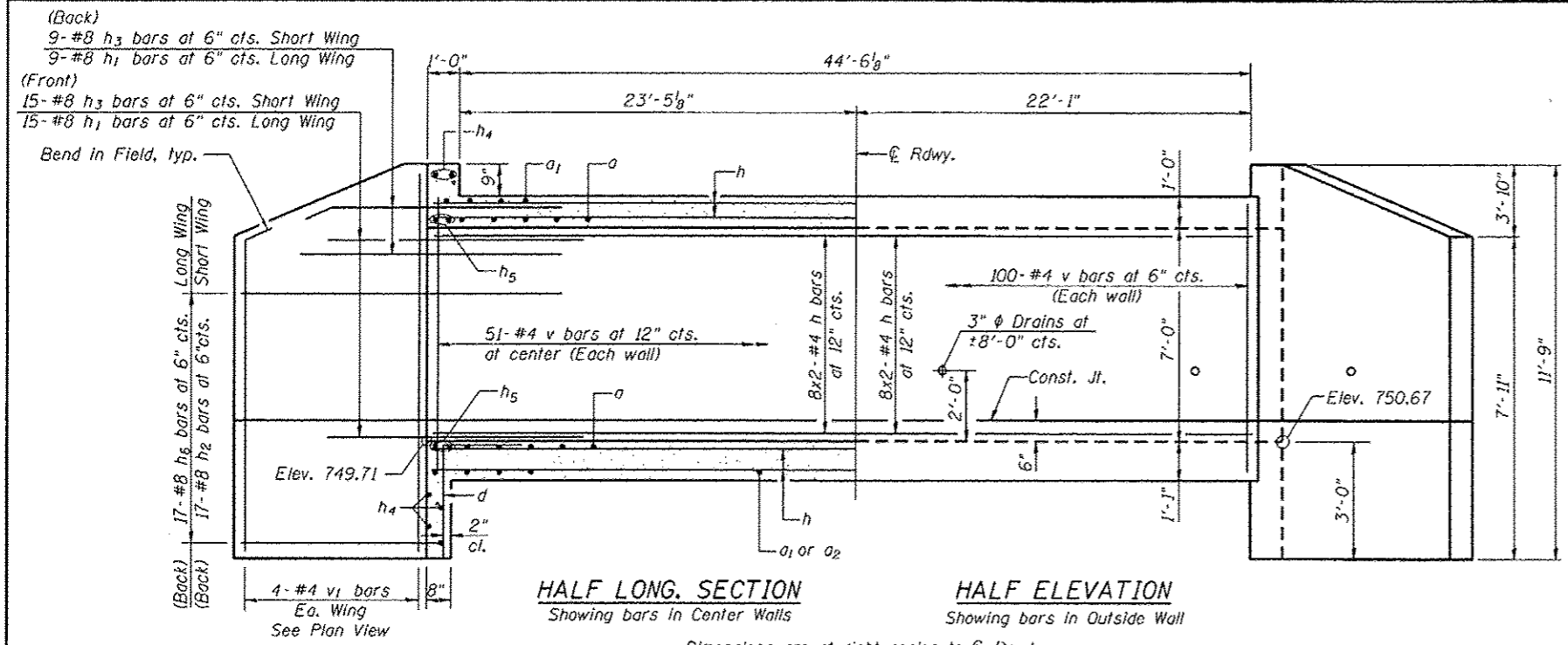
LEGEND

- ROW MONUMENT
- FOUND NAIL
- FOUND REBAR AND PLUG

Notes: ALL COORDINATES, BEARINGS & DISTANCES ARE REFERENCED TO THE ILLINOIS STATE PLANE COORDINATE SYSTEM, WEST ZONE, NAD83(2011) PER GPS OBSERVATIONS USING PUBLISHED VALUES FOR NGS CONTROL MONUMENT "STONE-1", PID: 069199, ALUMINUM DISK WITH STEVENSON COUNTY LOGO.

CWA SURVEY
CLAASSEN, WHITE & ASSOCIATES, P.C. LAND SURVEYORS
 121 AIRPORT DRIVE, UNIT 1, JOLIET, ILLINOIS 60431
 (815) 744-3720 claussewh@cwawhite.com
 FIRM NO. 184-004039 CWA JOB #6038

FILE NAME = CWA Base.dgn	USER NAME =	DESIGNED -	REVISED 12-19-14	STEPHENSON COUNTY HIGHWAY DEPARTMENT TEMPORARY EASEMENT PLAT	FAS ROUTE 63 (KENT ROAD)	LAND SECTION 15	COUNTY: STEPHENSON
		DRAWN - JLS	REVISED -		SEC: 12-00180-00-BR	T 26 N, R 5 E OF 4TH P.M.	PROJECT# BRS-0063 (107)
		CHECKED - DAC	REVISED -		SCALE: 1" = 50'	SHEET NO. E1	STA 25+00 TO STA 29+00
		DATE - 04-11-14	REVISED -				



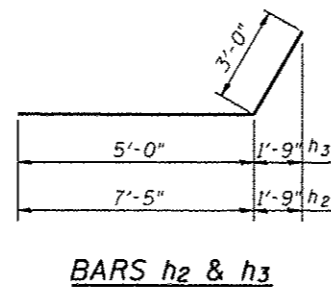
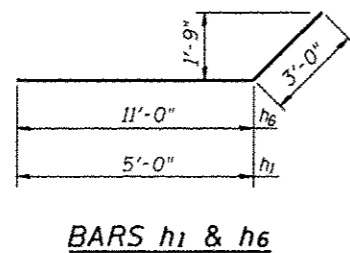
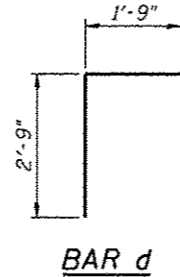
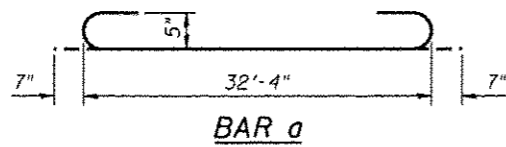
LICENSED STRUCTURAL ENGINEER
ANTHONY J. STANDISH
081-005819
DATE: 11/2016
STATE OF ILLINOIS

GENERAL PLAN & ELEVATION
SOUTH KENT ROAD
OVER PLUM CREEK BRANCH
SEC. 12-00180-00-BR
STEPHENSON COUNTY
STATION 27+40.48
STRUCTURE NO. 089-5140

 1170 SOUTH MOUBOLT ROAD JULIET, ILLINOIS 60431 (815) 744-4200 IDPFR NO. 184-001273	USER NAME *	DESIGNED - RRD	REVISED	STEPHENSON COUNTY HIGHWAY DEPARTMENT	CULVERT DETAILS STRUCTURE NO. 089-5140 SHEET NO. 1 OF 3 SHEETS	F.A.S. RTE.	SECTION	COUNTY	TOTAL SHEET NO.	
	PLOT SCALE *	CHECKED - AJS	REVISED			63	12-00180-00-BR	STEPHENSON	21	15
	PLOT DATE *	DRAWN - B.J.F.	REVISED			CONTRACT NO. 85608				
		CHECKED - AJS	REVISED			ILLINOIS FED. AID PROJECT				

BRANCH OF PLUM CREEK
 BUILT 201X BY
 STEPHENSON COUNTY
 SECTION 12-00180-00-BR
 STATION 27+40.48
 STR. NO. 089-5140 LOADING HL-93

NAME PLATE
 See Std. 515001



Notes:

A distance of half the length of the wingwall but not less than six feet of the barrel shall be poured monolithically with the wingwalls.

Bars indicated thus 12x4-#5 etc. indicates 12 lines of bars with 4 lengths per line.

Class SI Concrete shall be used throughout.

Exposed edges shall be beveled 3/4".

For backfill and embankment, see Standard Specifications.

Reinforcement bars shall conform to the requirements of AASHTO M-31, M-42, or M-53 Grade 60.

It is the responsibility of the Contractor to divert the stream flow during construction in order to keep the construction area free of water. The method of water diversion shall be subject to the approval of the Engineer and the cost shall be included in the Unit bid price of "Concrete Box Culverts."

Precast option not allowed.

Any Excavation is included in the cost of Concrete Box Culverts.

MIN LAP LENGTH

#4 bar = 1'-1"

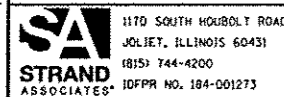
WATERWAY INFORMATION

DRAINAGE AREA.....	2.56 Sq Mi
DESIGN DISCHARGE (20 YR).....	1,210 C.F.S.
EXISTING OPENING.....	166 Sq Ft
REQUIRED OPENING.....	332 Sq Ft
PROPOSED OPENING.....	332 Sq Ft
100 YR DISCHARGE.....	1,892 C.F.S.

BILL OF MATERIAL

Bar	No.	Size	Length	Shape
a	172	#5	33'-6"	
a1	102	#5	32'-4"	
a2	204	#5	5'-2"	
d	70	#4	4'-6"	
h	336	#4	25'-3"	
h1	48	#8	8'-0"	
h2	34	#8	10'-5"	
h3	48	#8	8'-0"	
h4	10	#6	33'-7"	
h5	8	#6	34'-4"	
h6	34	#8	14'-0"	
v	306	#4	8'-9"	
v1	16	#4	11'-4"	
Concrete Box Culverts			Cu. Yd.	177
Reinforcement Bars			Pound	23,530
Name Plate			Each	1
Porous Granular Embankment			Cu. Yd.	37
Removal of Existing Structures			Each	1

FILE NAME = S:\JUL\17288-3799\3715\881\Micro\CA00_Sheets\012145-141-015-00.dgn



1170 SOUTH HOOBOLT ROAD
 JOLIET, ILLINOIS 60431
 (815) 744-4200
 IDPPR NO. 184-001273

USER NAME = johndp
 DESIGNED - RRD
 CHECKED - AJS
 DRAWN - BJF
 PLOT DATE = 1/15/2015

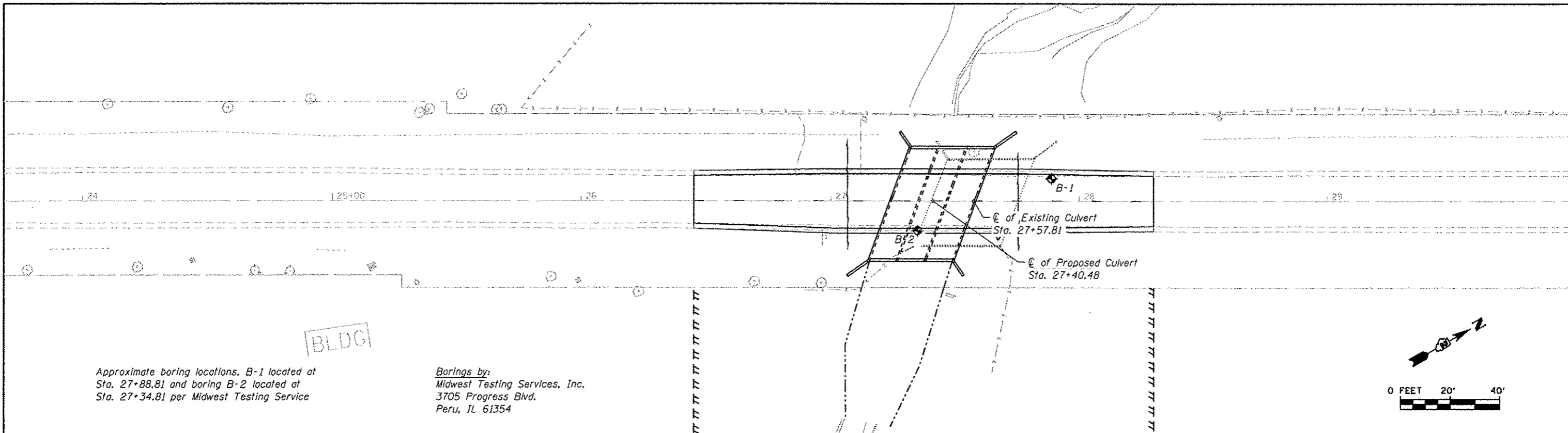
REVISED
 REVISED
 REVISED
 REVISED

**STEPHENSON COUNTY
 HIGHWAY DEPARTMENT**

**GENERAL DETAILS
 STRUCTURE NO. 089-5140**

SHEET NO. 2 OF 3 SHEETS

F.A.S. RTE.	SECTION	COUNTY	TOTAL SHEETS	SHEET NO.
63	12-00180-00-BR	STEPHENSON	21	16
CONTRACT NO. 85608			ILLINOIS FED. AID PROJECT	



Midwest Testing Services, Inc.		BORING LOG		Phone: 815-233-6696				
3705 Progress Blvd. Peru, IL 61354		Sheet 1 of 2		Fax: 815-233-6659				
Client: Stephenson County		Boring No. B-1		e-mail: mts3705@comcast.net				
Project Name: S. Kent Road Section 12-00180-00-BR		Surface Elev. 99.70		Start Date 04/15/12				
Project Site: Stephenson County, IL		Auger Depth 27		Rotary Depth NA				
Location: 9' West of centerline of road 31' North of center of culvert		Start Date 04/15/12		Finish Date 04/15/12				
DEPTH (ELEV.)	DESCRIPTION OF MATERIALS	Sample No.	Sample Type	Q _u (TSF)	N Value (Blows)	Moisture (%)	Dry Density (PCF)	REMARKS
99.70								
98.70	Stiff Brown Clay (Fill)	1	SS	1.6	11	8	22	
97.70		2	SS	1.1	6	8	23	
96.70		3	SS	1.0	5	8	25	
95.70	Stiff Black To Brown Clay With Limestone Fragments	4	SS	1.8	12	8	19	
94.70		5	SS	...	32	
93.70	Dense Yellowish Brown Limestone Fragments	6	SS	...	70	
92.70		7	SS	...	33	
91.70		8	SS	...	35	

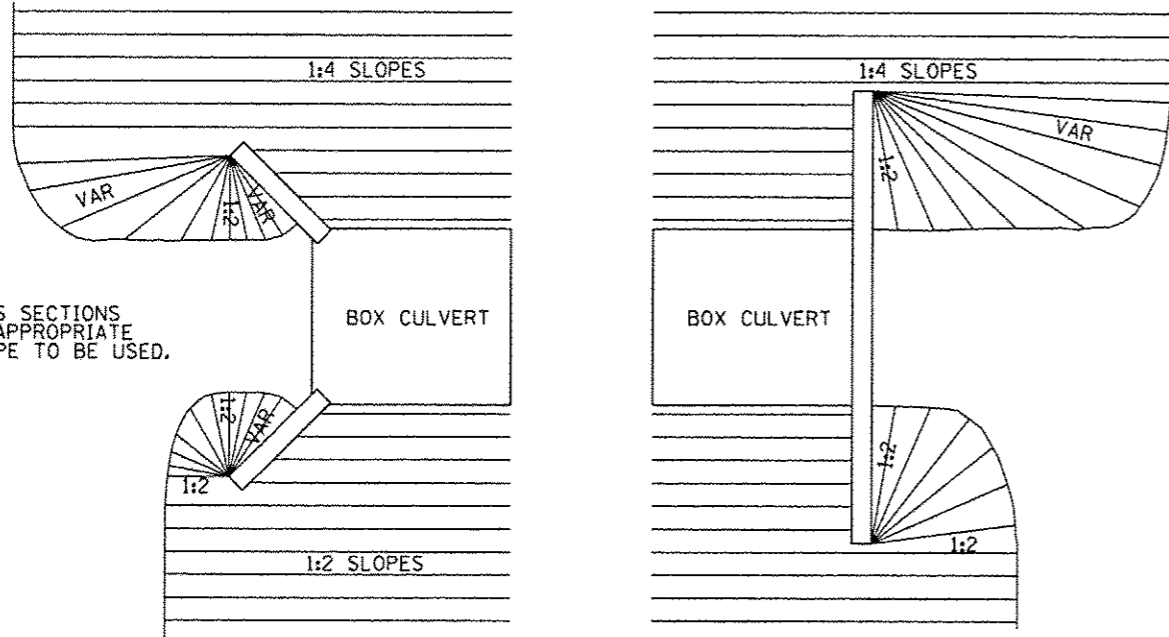
Midwest Testing Services, Inc.		BORING LOG		Phone: 815-233-6696				
3705 Progress Blvd. Peru, IL 61354		Sheet 2 of 2		Fax: 815-233-6659				
Client: Stephenson County		Boring No. B-1		e-mail: mts3705@comcast.net				
Project Name: S. Kent Road Section 12-00180-00-BR		Surface Elev. 99.70		Start Date 04/15/12				
Project Site: Stephenson County, IL		Auger Depth 27		Rotary Depth NA				
Location: 9' West of centerline of road 31' North of center of culvert		Start Date 04/15/12		Finish Date 04/15/12				
DEPTH (ELEV.)	DESCRIPTION OF MATERIALS	Sample No.	Sample Type	Q _u (TSF)	N Value (Blows)	Moisture (%)	Dry Density (PCF)	REMARKS
99.70								
98.70	Dense Yellowish Brown Limestone Fragments	22						
97.70	Extremely Dense Pale Brown Limestone (Drilled With Rock Bit With Difficulty)	23						
96.70		24						
95.70	Refusal Limestone Bedrock	25						
94.70		26						
93.70		27						
92.70		28						
91.70		29						
90.70		30						
89.70		31						
88.70		32						
87.70		33						
86.70		34						
85.70		35						
84.70		36						
83.70		37						
82.70		38						
81.70		39						
80.70		40						
79.70		41						

Midwest Testing Services, Inc.		BORING LOG		Phone: 815-233-6696				
3705 Progress Blvd. Peru, IL 61354		Sheet 1 of 2		Fax: 815-233-6659				
Client: Stephenson County		Boring No. B-2		e-mail: mts3705@comcast.net				
Project Name: S. Kent Road Section 12-00180-00-BR		Surface Elev. 99.70		Start Date 04/15/12				
Project Site: Stephenson County, IL		Auger Depth 23.5		Rotary Depth NA				
Location: 12' East of centerline of road 32' South of center of culvert		Start Date 04/15/12		Finish Date 04/15/12				
DEPTH (ELEV.)	DESCRIPTION OF MATERIALS	Sample No.	Sample Type	Q _u (TSF)	N Value (Blows)	Moisture (%)	Dry Density (PCF)	REMARKS
99.70								
98.70	Stiff Brown Clay (Fill)	1	SS	1.5	7	8	20	
97.70		2	SS	1.0	5	8	24	
96.70	Stiff Black Clay	3	SS	1.5	7	8	22	
95.70		4	SS	1.7	11	8	18	
94.70	Stiff Brown Clay With Limestone Fragments	5	SS	...	31	
93.70		6	SS	...	40	
92.70		7	SS	...	35	
91.70	Dense Yellowish Brown Limestone Fragments	8	SS	...	31	
90.70								
89.70								

Midwest Testing Services, Inc.		BORING LOG		Phone: 815-233-6696				
3705 Progress Blvd. Peru, IL 61354		Sheet 2 of 2		Fax: 815-233-6659				
Client: Stephenson County		Boring No. B-2		e-mail: mts3705@comcast.net				
Project Name: S. Kent Road Section 12-00180-00-BR		Surface Elev. 99.70		Start Date 04/15/12				
Project Site: Stephenson County, IL		Auger Depth 23.5		Rotary Depth NA				
Location: 12' East of centerline of road 32' South of center of culvert		Start Date 04/15/12		Finish Date 04/15/12				
DEPTH (ELEV.)	DESCRIPTION OF MATERIALS	Sample No.	Sample Type	Q _u (TSF)	N Value (Blows)	Moisture (%)	Dry Density (PCF)	REMARKS
99.70								
98.70	Very Dense Yellowish Brown Limestone Fragments	9	SS	...	56	
97.70		10						
96.70	Refusal Limestone - Bedrock	11						
95.70		12						
94.70		13						
93.70		14						
92.70		15						
91.70		16						
90.70		17						
89.70		18						
88.70		19						
87.70		20						
86.70		21						
85.70		22						
84.70		23						
83.70		24						
82.70		25						
81.70		26						
80.70		27						
79.70		28						

FILE NAME: S:\JUL\3788-3799\3715\B1\Micro\CA00 Sheets\012345-int-816-SS1.dgn

GRADING AROUND WINGWALLS

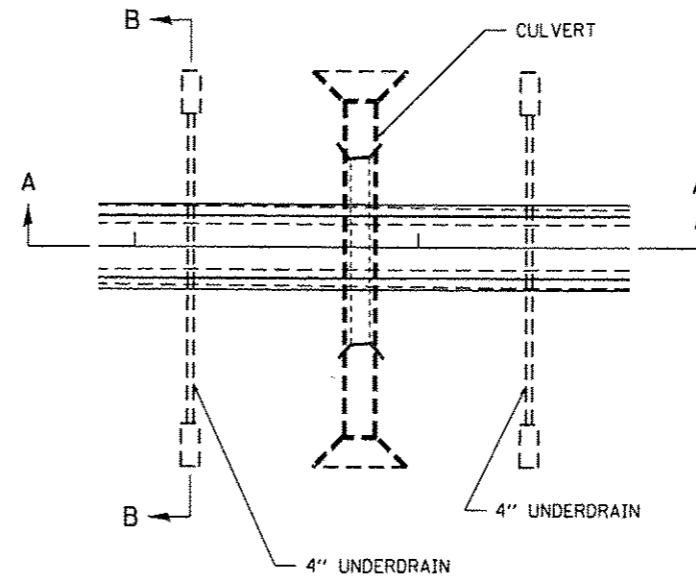


NOTES
SEE CROSS SECTIONS
FOR THE APPROPRIATE
FRONTSLOPE TO BE USED.

5-27-09

GRADING AROUND WINGWALLS 20.4

UNDERDRAIN FOR ACROSS ROAD (AR) CULVERTS



NOTES:

IN SAG CONDITIONS INSTAL PIPE UNDERDRAINS ON BOTH SIDES OF CULVERT.

ON HIGHWAY GRADES GREATER THAN 2% INSTALL PIPE UNDERDRAINS ON THE HIGH SIDE OF THE CULVERT.

THIS WORK SHALL BE COMPLETED ACCORDING TO SECTION 601 OF THE STANDARD SPECIFICATION.

THE UNDERDRAIN SHALL EXTEND UNTIL INTERSECTING WITH THE SIDE SLOPES. THE PIPES SHALL DRAIN INTO CONCRETE HEADWALLS. (SEE ARTICLE 601.05 OF THE STANDARD SPECIFICATIONS AND HIGHWAY STANDARDS 601101).

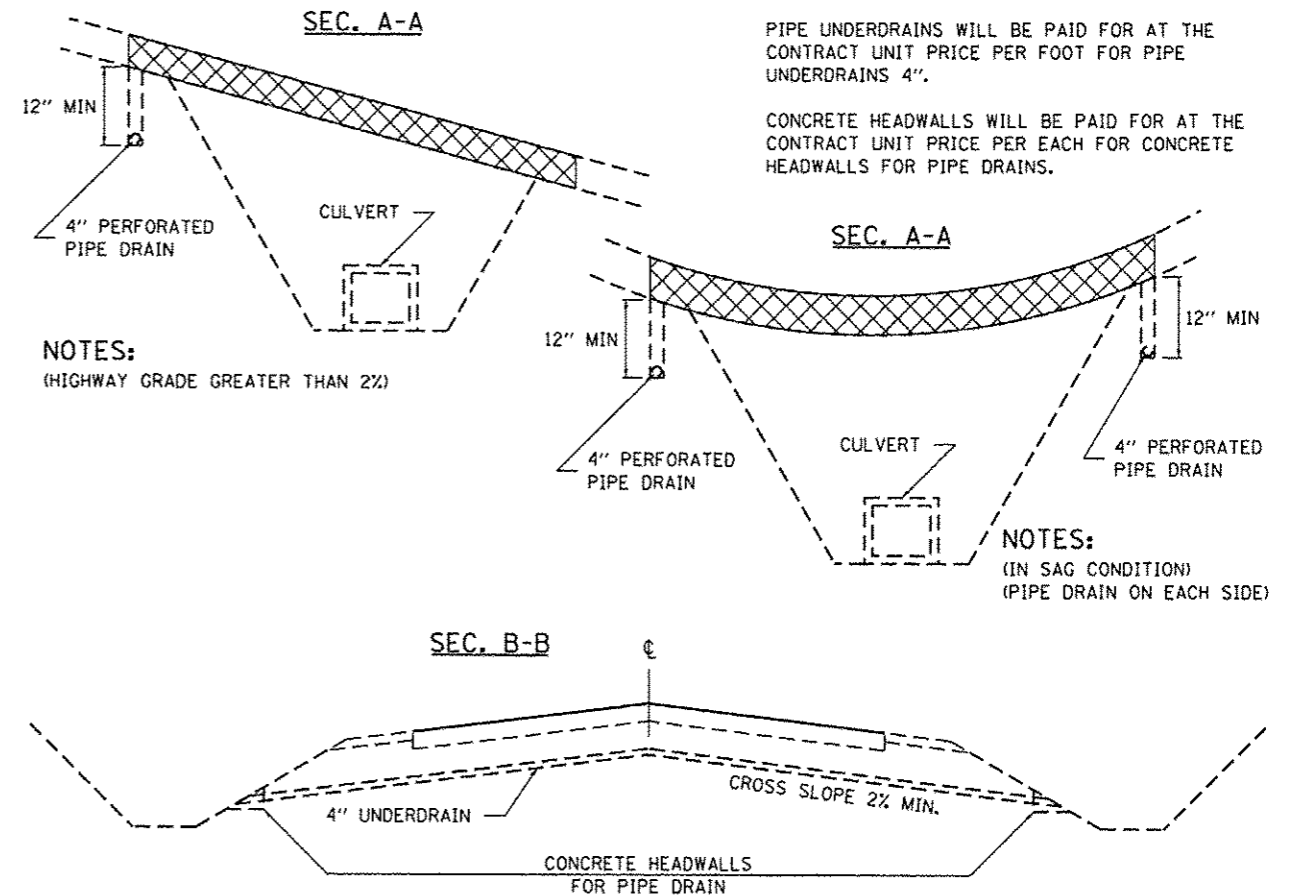
THE UNDERDRAIN SHALL BE A MINIMUM OF 12" BELOW THE EXISTING PAVEMENT.

THE TRENCH FOR THE UNDERDRAIN SHALL BE BACKFILLED WITH CA7 OR CA16.

THE TRENCH SHALL BE WRAPPED USING A FABRIC ENVELOPE MEETING THE REQUIREMENTS OF ARTICLE 1080.05 OF THE STANDARD SPECIFICATIONS. FABRIC ENCASING THE PIPE SHALL BE ELIMINATED.

PIPE UNDERDRAINS WILL BE PAID FOR AT THE CONTRACT UNIT PRICE PER FOOT FOR PIPE UNDERDRAINS 4".

CONCRETE HEADWALLS WILL BE PAID FOR AT THE CONTRACT UNIT PRICE PER EACH FOR CONCRETE HEADWALLS FOR PIPE DRAINS.



NOTES:
(HIGHWAY GRADE GREATER THAN 2%)

NOTES:
(IN SAG CONDITION)
(PIPE DRAIN ON EACH SIDE)

REVISED - 7-05-12

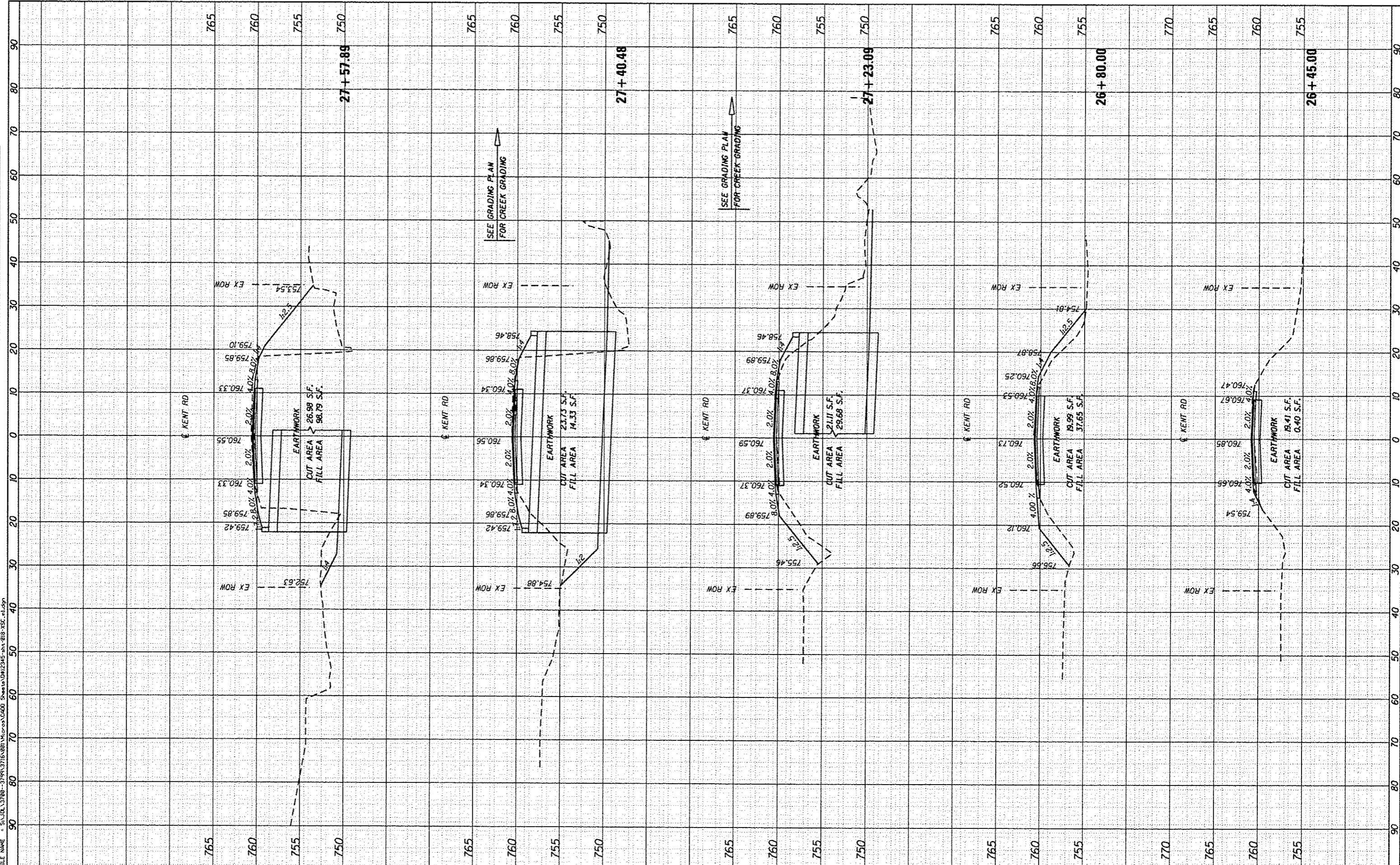
UNDERDRAIN FOR ACROSS ROAD (AR) CULVERTS 37.2

REVISED -	REGION 2 / DISTRICT 2 STANDARD	F.A.S. RTE.	SECTION	COUNTY	TOTAL SHEETS	SHEET NO.
REVISED -		63	12-00180-00-BR	STEPHENSON	22	18
REVISED -		SCALE: 40:0000' = 1"	SHEET NO. OF SHEETS STA. TO STA.		CONTRACT NO.	

DATE	
BY	
FINAL SURVEY	
CHECKED	
PLOTTED	
TEMPLATE	
AREAS	
AREAS CHECKED	

DATE	
BY	
ORIGINAL SURVEY	
CHECKED	
PLOTTED	
TEMPLATE	
AREAS	
AREAS CHECKED	

FILE NAME: S:\JUL15\2789-3799\3789\2789\2789.dwg



STRAND ASSOCIATES
 1170 SOUTH HOUDOLT ROAD
 JOLIET, ILLINOIS 60431
 (815) 744-4200

USER NAME = johnkp	DESIGNED - SLG	REVISED -
MODEL NAME = Default	DRAWN - BJJ	REVISED -
PLOT SCALE = 20.0000' / in.	CHECKED - RRD	REVISED -
PLOT DATE = 1/15/2015	DATE - 01/15/2015	REVISED -

**STEPHENSON COUNTY
HIGHWAY DEPARTMENT**

KENT ROAD CROSS SECTIONS

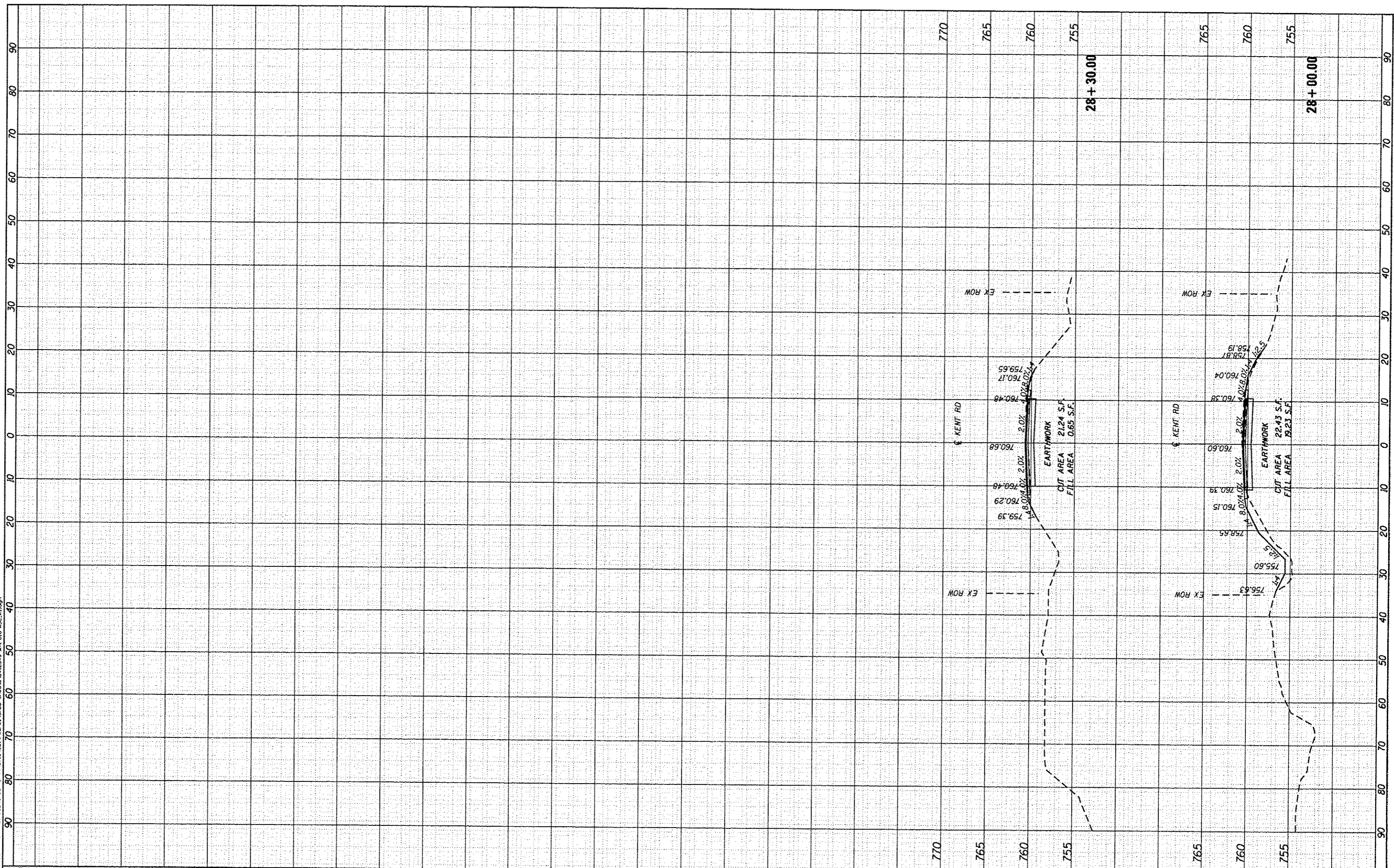
SCALE: SHEET 1 OF 2 SHEETS STA. 26+45.00 TO STA. 27+57.89

F.A.S. RTE. 63	SECTION 12-00180-00-BR	COUNTY STEPHENSON	TOTAL SHEETS 21	SHEET NO. 19
CONTRACT NO. 85608			ILLINOIS FED. AID PROJECT	

FINISH	DATE
SURVEY	BT
PLOTTED	
NOTE BOOK	
AREAS CHECKED	
AREAS CHECKED	

ORIGINAL	DATE
SURVEY	BT
PLOTTED	
NOTE BOOK	
AREAS CHECKED	
AREAS CHECKED	

FILE NAME = S:\JUL_13288-3795\3795\081\081\081\081.dwg



STRAND ASSOCIATES
 1170 SOUTH HOUBOLT ROAD
 JOLIET, ILLINOIS 60431
 (815) 744-4200

USER NAME = johnhp	DESIGNED - SLG	REVISED -
MODEL NAME = Default	DRAWN - BJJ	REVISED -
PLOT SCALE = 28.0000' / 1"	CHECKED - RRD	REVISED -
PLOT DATE = 1/15/2015	DATE - 01/15/2015	REVISED -

**STEPHENSON COUNTY
 HIGHWAY DEPARTMENT**

KENT ROAD CROSS SECTIONS

SCALE: SHEET 2 OF 2 SHEETS STA. 28+00.00 TO STA. 28+30.00

F.A.S. RTE.	SECTION	COUNTY	TOTAL SHEETS	SHEET NO.
63	12-00180-00-BR	STEPHENSON	21	20
				CONTRACT NO. 85608
ILLINOIS FED. AID PROJECT				

