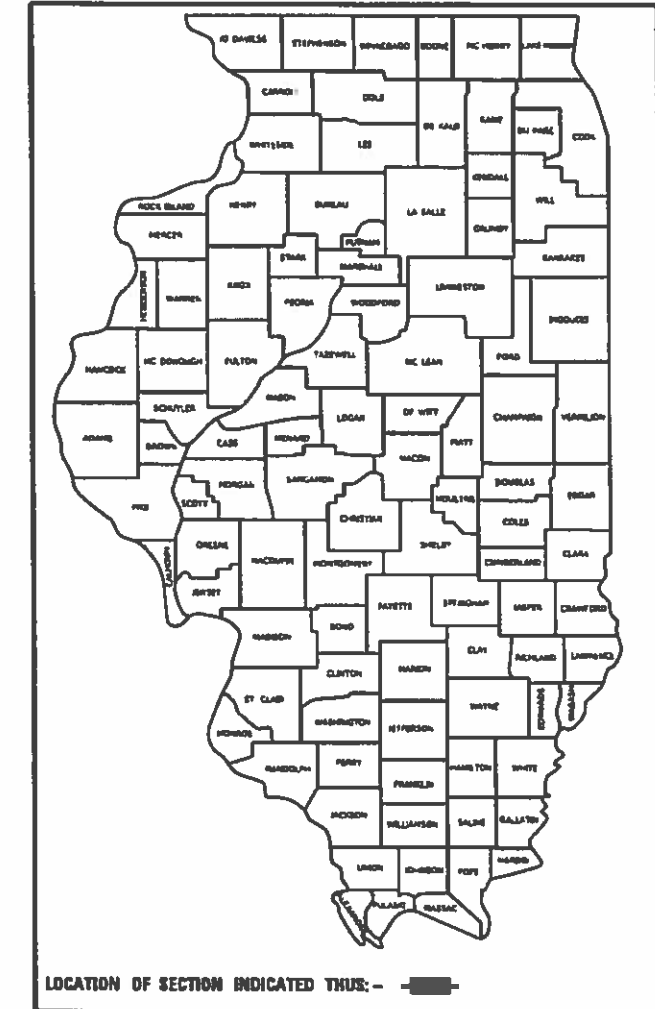


STATE OF ILLINOIS  
DEPARTMENT OF TRANSPORTATION

F.A.P. RTE.	SECTION	COUNTY	TOTAL SHEETS	SHEET NO.
333	2018-062-BP	LAKE	17	1
		ILLINOIS	CONTRACT NO. 62G86	

D-91-348-18



**PROPOSED  
HIGHWAY PLANS**

FAP ROUTE 333: IL 120 (BELVIDERE RD)  
OVER GREENLEAF ST AND CPRR  
SECTION 2018-062-BP  
PROJECT: NHPP-IENL(631)  
BRIDGE PAINTING  
LAKE COUNTY

C-91-273-18

R 11 E

FOR INDEX OF SHEETS, SEE SHEET NO. 2

IMPROVEMENT IS LOCATED  
IN THE VILLAGE OF GURNEE  
AND THE CITIES OF WAUKEGAN  
AND PARK CITY

**TRAFFIC DATA**

**IL 120:**

2017 ADT = 38800  
POSTED SPEED LIMIT=50 MPH

**GREENLEAF ST**

2017 ADT = 11400  
POSTED SPEED LIMIT=40 MPH

**IL 120 RAMPS:**

2015 ADT = 4450  
POSTED SPEED LIMIT= N/A

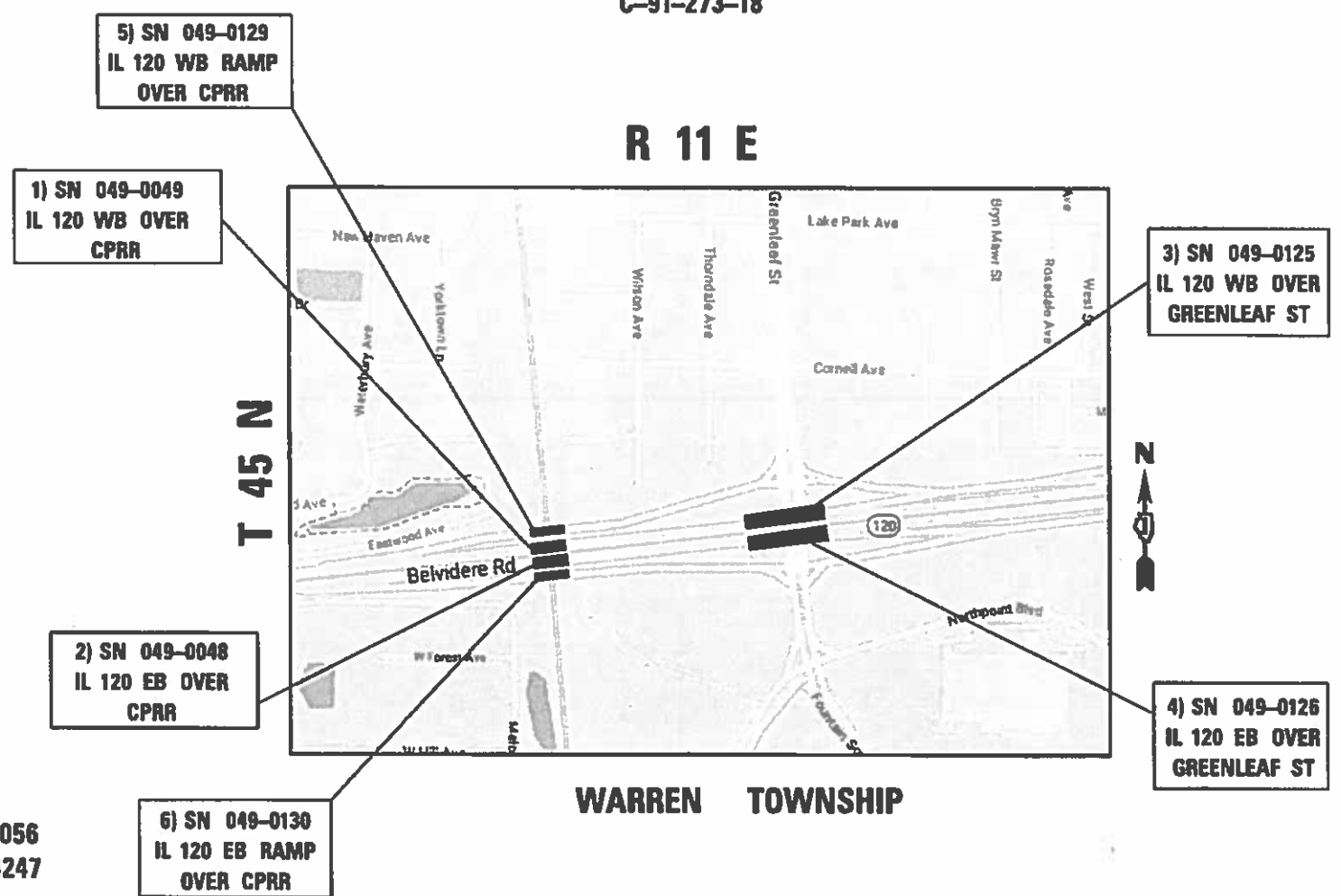


FULL SIZE PLANS HAVE BEEN PREPARED USING STANDARD ENGINEERING SCALES. REDUCED SIZED PLANS WILL NOT CONFORM TO STANDARD SCALES. IN MAKING MEASUREMENTS ON REDUCED PLANS, THE ABOVE SCALES MAY BE USED.

J.U.L.I.E.  
JOINT UTILITY LOCATION INFORMATION FOR EXCAVATION  
1-800-892-0123  
OR 811

PROJECT ENGINEER: MIDY, J. ALAIN (847) 221-3056  
PROJECT MANAGER: AQUEEL, FAWAD (847) 705-4247

CONTRACT NO. 62G86



STATE OF ILLINOIS  
DEPARTMENT OF TRANSPORTATION

SUBMITTED DECEMBER 19, 2019

*Anthony J. Quigley* REGIONAL ENGINEER  
Jan 31 2020

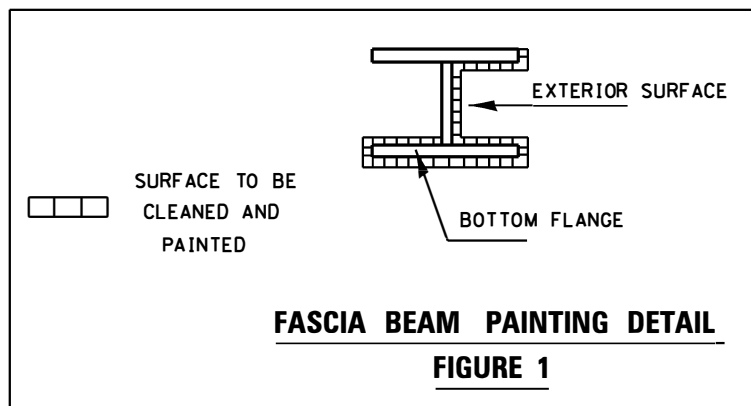
*Scott E. Etkin* ENGINEER OF DESIGN AND ENVIRONMENT  
Jan 31 2020

*David A. ...* DIRECTOR OF HIGHWAYS PROJECT IMPLEMENTATION

PRINTED BY THE AUTHORITY  
OF THE STATE OF ILLINOIS

### INDEX OF SHEETS

<u>SHEET NO.</u>	<u>DESCRIPTION</u>
1.	TITLE SHEET
2.	INDEX OF SHEETS AND GENERAL NOTES
3.	SUMMARY OF QUANTITIES
4-6.	BRIDGE DETAILS SN 049-0048; 0049
7-11.	BRIDGE DETAILS SN 049-0125; 0126
12-14	BRIDGE DETAILS SN 049-0129; 0130
15.	TRAFFIC CONTROL AND PROTECTION FOR SIDE ROADS, INTERSECTIONS AND DRIVEWAYS. (TC-10)
16.	TRAFFIC CONTROL AND PROTECTION AT TURN BAYS (TO REMAIN OPEN TO TRAFFIC) (TC-14)
17	ARTERIAL ROAD INFORMATION SIGN (TC-22)



### STATE STANDARDS

<u>STD NO.</u>	<u>DESCRIPTION</u>
701101-05	OFF-ROAD OPERATIONS, MULTILANE, 15' TO 24" FROM PAVEMENT EDGE
701106-02	OFF-ROAD OPERATIONS, MULTILANE, MORE THAN 15' AWAY
701601-09	URBAN LANE CLOSURE, MULTILANE, 1W OR 2W WITH NON TRAVERSABLE MEDIAN
701701-10	URBAN LANE CLOSURE, MULTILANE INTERSECTION
701801-06	SIDEWALK, CORNER OR CROSSWALK CLOSURE
701901-08	TRAFFIC CONTROL DEVICES

### GENERAL NOTES

BEFORE STARTING ANY EXCAVATION, THE CONTRACTOR SHALL CALL •J.U.L.I.E. • AT (800) 892-0123 or 811 FOR FIELD LOCATIONS OF BURIED ELECTRIC, TELEPHONE AND GAS UTILITIES. 48 HOUR NOTIFICATION IS REQUIRED.

THE CONTRACTOR SHALL COORDINATE CONSTRUCTION ACTIVITIES WITH UTILITY COMPANIES, AND THE VILLAGE OF GURNEE AND THE CITIES OF WAUKEGAN AND PARK CITY.

THE CONTRACTOR WILL NOT BE ALLOWED TO SET UP A YARD OR FIELD OFFICE ON STATE PROPERTY WITHOUT WRITTEN PERMISSION FROM THE DEPARTMENT.

PLAN DIMENSIONS AND DETAILS RELATIVE TO EXISTING PLANS ARE SUBJECT TO NOMINAL CONSTRUCTION VARIATIONS. THE CONTRACTOR SHALL FIELD VERIFY EXISTING DIMENSIONS AND MAKE NECESSARY APPROVED ADJUSTMENTS PRIOR TO ORDERING OF MATERIALS. SUCH VARIATIONS SHALL NOT BE CAUSE FOR ADDITIONAL COMPENSATION FOR A CHANGE IN SCOPE OF THE WORK. HOWEVER, THE CONTRACTOR WILL BE PAID FOR THE QUANTITY ACTUALLY FURNISHED BASED AT THE UNIT PRICE BID FOR THE WORK.

THE CONTRACTOR SHALL CONTACT THE DISTRICT ONE TRAFFIC CONTROL SUPERVISOR AT (847)705-4151 A MINIMUM OF 72 HOURS IN ADVANCE OF BEGINNING WORK.

THESE PLANS HAVE BEEN PREPARED FROM NOTES RECEIVED FROM THE BUREAU OF MAINTENANCE BRIDGE INSPECTORS.

DO NOT SCALE PLANS FOR CONSTRUCTION DIMENSIONS.

IT SHALL BE THE CONTRACTOR'S RESPONSIBILITY TO PROTECT AND MAINTAIN THE EXISTING BRIDGE LIGHTING AT ANY LOCATIONS THAT LIGHTING IS ENCOUNTERED ADJACENT TO AN AREA TO BE CLEANED AND PAINTED.

THE CONTRACTOR SHALL BE REQUIRED TO PROVIDE ACCESS TO ABUTTING PROPERTY AT ALL TIMES DURING THE CONSTRUCTION OF THIS PROJECT.

WHEN ARTIFICIAL LIGHTING IS UTILIZED IN NIGHTTIME OPERATIONS, THE CONTRACTOR SHALL EXERCISE THE OUTMOST PRECAUTIONS PREVENTING ADVERSE VISIBILITY TO THE MOTORING PUBLIC AND ADJACENT RESIDENTIAL AREAS.

### GENERAL PAINT NOTES

CLEANING AND PAINTING OF THE EXISTING STRUCTURAL STEEL SHALL BE AS SPECIFIED IN THE SPECIAL PROVISION FOR "CLEANING AND PAINTING EXISTING STEEL STRUCTURES".

ALL ITEMS (SUCH AS, BUT NOT LIMITED TO: CONDUITS, BRACKETS AND DECK DRAINS) ATTACHED TO OUTSIDE OF THE FASCIA BEAMS SHOULD BE CLEANED AND PAINTED.

ALL BEAMS, BEARINGS AND OTHER STRUCTURAL STEEL WITHIN FIVE (5) FT. (MEASURED ALONG THE BEAM) OF EITHER SIDE OF ALL DECK JOINTS, SHALL BE CLEANED PER NEAR WHITE BLAST CLEANING SSPC-SP10. THE EXTERIOR SURFACES AND TOP AND BOTTOM OF THE BOTTOM FLANGE OF THE FASCIA BEAMS (SEE FIGURE 1) SHALL BE CLEANED PER NEAR WHITE BLAST CLEANING SSPC-SP10.

THESE AREAS SHALL BE PAINTED ACCORDING TO THE REQUIREMENTS OF PAINT SYSTEM 1 -OZ/E/U. THE COLOR OF THE FINAL FINISH COAT FOR ALL INTERIOR STEEL SURFACES SHALL BE GRAY, MUNSELL NO 5B 7/1. THE COLOR OF THE FINAL FINISH COAT FOR THE EXTERIOR AND BOTTOM FLANGE OF THE FASCIA BEAMS SHALL BE REDDISH BROWN, MUNSELL NO 2. 5YR 3/4.

A MINIMUM OF 1 AIR MONITOR FOR EACH STRUCTURE (SN 049-0125, 049-0126, 049-0129 AND 049-0130) WILL BE REQUIRED TO MONITOR ABRASIVE BLASTING OPERATIONS AT THESE SITES. SEE SPECIAL PROVISION FOR "CONTAINMENT AND DISPOSAL OF LEAD PAINT CLEANING RESIDUES".

REV. - MS

MODEL: Default  
FILE NAME: p:\planningroom.dat\illinois.gov\PWIDOT\Documents\DOT\_Offices\District 1\Projects\0134818\CADD\Drawings\0134818-ent-generalnote.dgn

USER NAME = gorengautab	DESIGNED -	REVISED -
	DRAWN -	REVISED -
PLOT SCALE = 100.0000' / in.	CHECKED -	REVISED -
PLOT DATE = 10/16/2019	DATE -	REVISED -

**STATE OF ILLINOIS  
DEPARTMENT OF TRANSPORTATION**

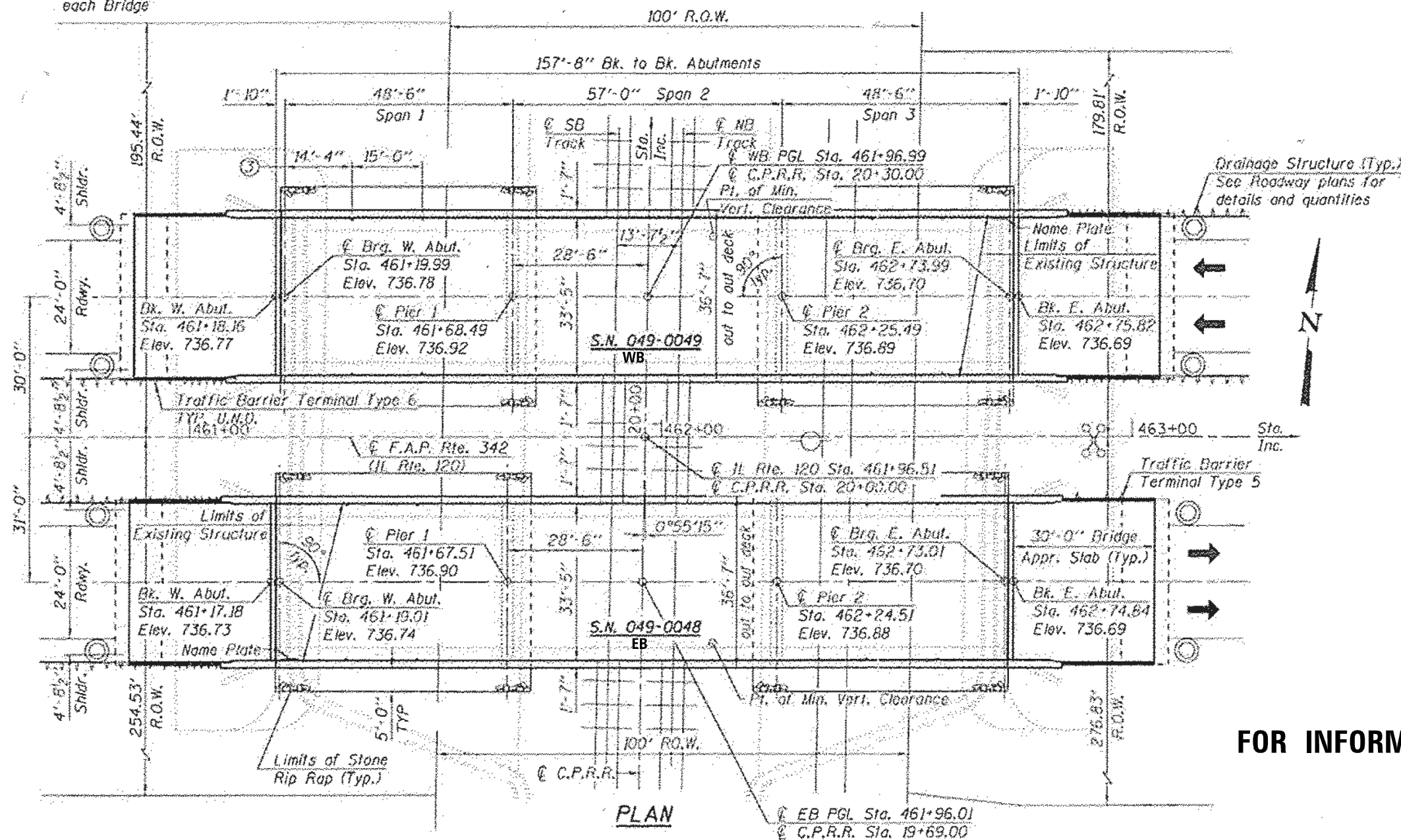
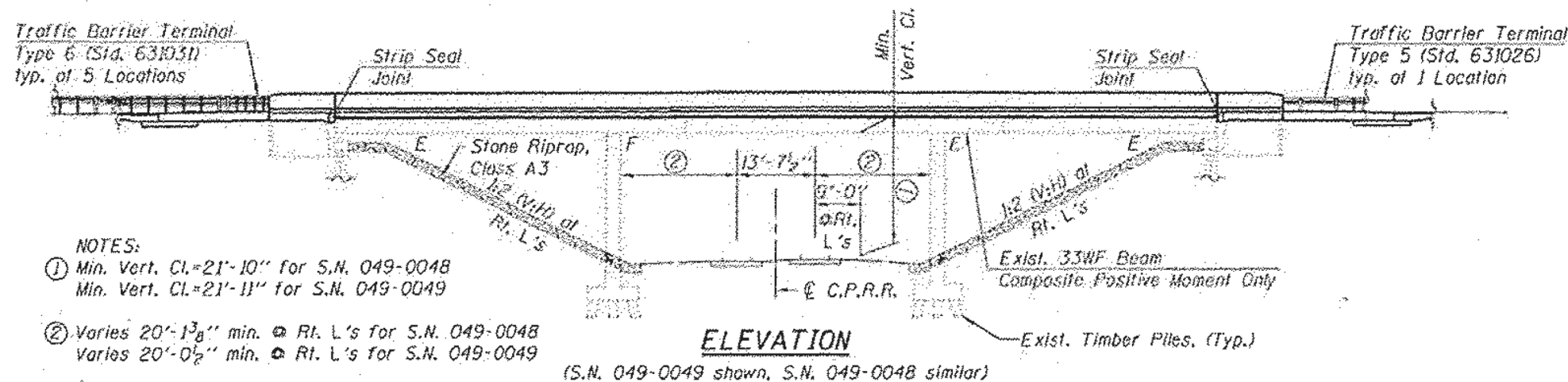
**INDEX OF SHEETS, STATE STANDARDS  
GENERAL NOTES AND GENERAL PAINT NOTES**

SCALE: SHEET OF SHEETS STA. TO STA.

F.A.P. RTE.	SECTION	COUNTY	TOTAL SHEETS	SHEET NO.
333	2018-062-BP	LAKE	17	2
				CONTRACT NO. 62G86
ILLINOIS FED. AID PROJECT				

SUMMARY OF QUANTITIES			URBAN TOTAL QUANTITIES	CONSTRUCTION TYPE CODE 0047						SUMMARY OF QUANTITIES			TOTAL QUANTITIES	CONSTRUCTION TYPE CODE					
CODE NO	ITEM	UNIT		1) SN 049-0049 80% FED 20% STATE	2) SN 049-0048 80% FED 20% STATE	3) SN 049-0125 80% FED 20% STATE	4) SN 049-0126 80% FED 20% STATE	5) SN 049-0129 80% FED 20% STATE	6) SN 049-0130 80% FED 20% STATE	CODE NO	ITEM	UNIT							
67000400	ENGINEER'S FIELD OFFICE, TYPE A	CAL MO	6	1	1	1	1	1	1										
67100100	MOBILIZATION	L SUM	1	0.17	0.17	0.17	0.17	0.16	0.16										
70102630	TRAFFIC CONTROL AND PROTECTION, STANDARD 701601	L SUM	1			0.5	0.5												
70102635	TRAFFIC CONTROL AND PROTECTION, STANDARD 701701	L SUM	1			0.5	0.5												
70102640	TRAFFIC CONTROL AND PROTECTION, STANDARD 701801	L SUM	1			0.5	0.5												
Z0007112	CONTAINMENT AND DISPOSAL OF LEAD PAINT CLEANING RESIDUES	L SUM	1	0.17	0.17	0.17	0.17	0.16	0.16										
Z0010501	CLEANING AND PAINTING STEEL BRIDGE NO. 1	L SUM	1	1															
Z0010502	CLEANING AND PAINTING STEEL BRIDGE NO. 2	L SUM	1		1														
Z0010503	CLEANING AND PAINTING STEEL BRIDGE NO. 3	L SUM	1			1													
Z0010504	CLEANING AND PAINTING STEEL BRIDGE NO. 4	L SUM	1				1												
Z0010505	CLEANING AND PAINTING STEEL BRIDGE NO. 5	L SUM	1					1											
Z0010506	CLEANING AND PAINTING STEEL BRIDGE NO. 6	L SUM	1						1										
Z0048665	RAILROAD PROTECTIVE LIABILITY INSURANCE	L SUM	1	0.25	0.25			0.25	0.25										

REV. - MS



**FOR INFORMATION ONLY**

MODEL: Default  
 FILE: 333\_2018-062-BP\_0049-0048.dwg

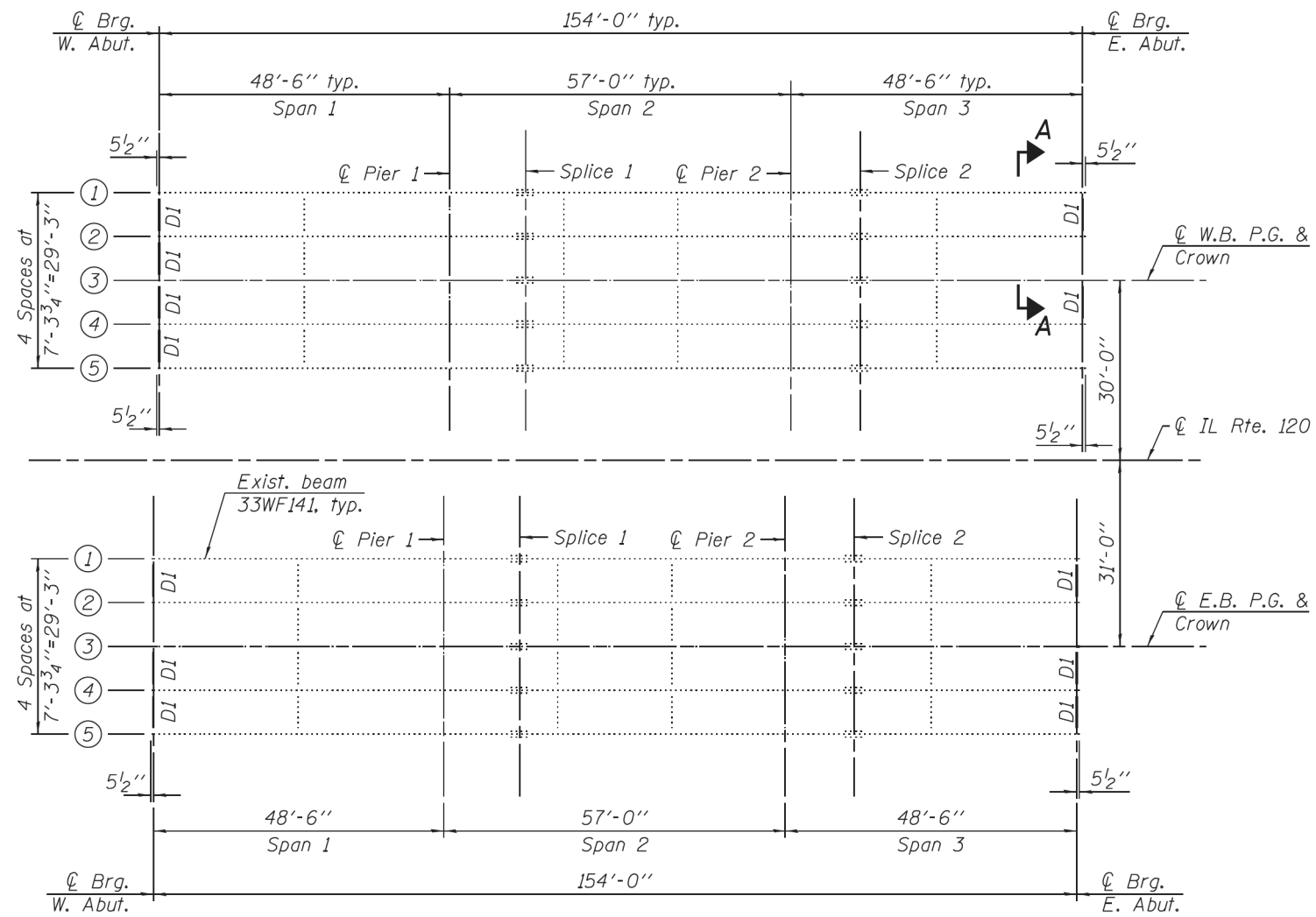
USER NAME = gorenautab	DESIGNED -	REVISED -
	DRAWN -	REVISED -
PLOT SCALE = 100,0000' / in.	CHECKED -	REVISED -
PLOT DATE = 10/16/2019	DATE -	REVISED -

**STATE OF ILLINOIS  
 DEPARTMENT OF TRANSPORTATION**

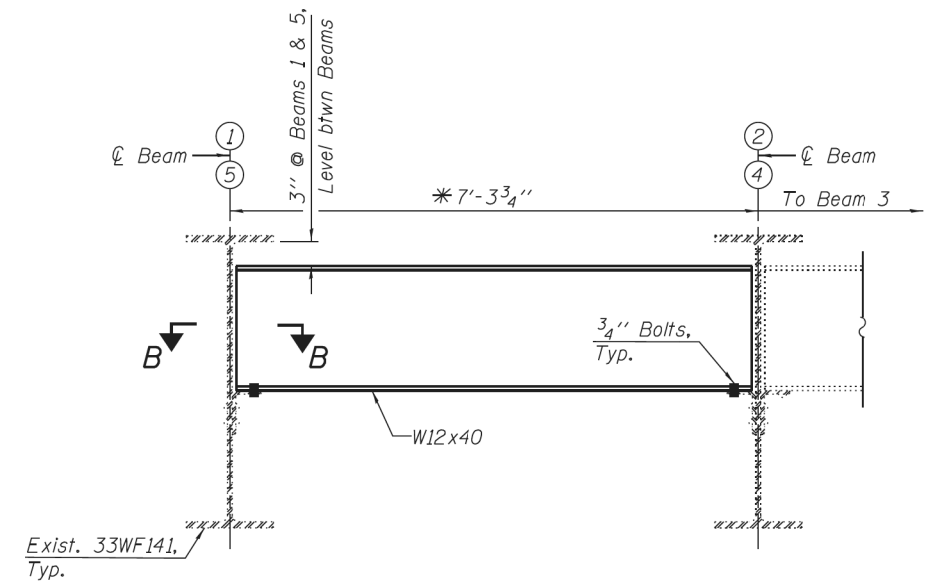
**EXISTING BRIDGE PLAN  
 IL 120 (BELVIDERE RD) OVER CP RR (SN 049-0048;0049)**

SCALE: SHEET 1 OF 3 SHEETS STA. TO STA.

F.A.P. RTE. 333	SECTION 2018-062-BP	COUNTY LAKE	TOTAL SHEETS 17	SHEET NO. 4
CONTRACT NO. 62G86				
ILLINOIS FED. AID PROJECT				

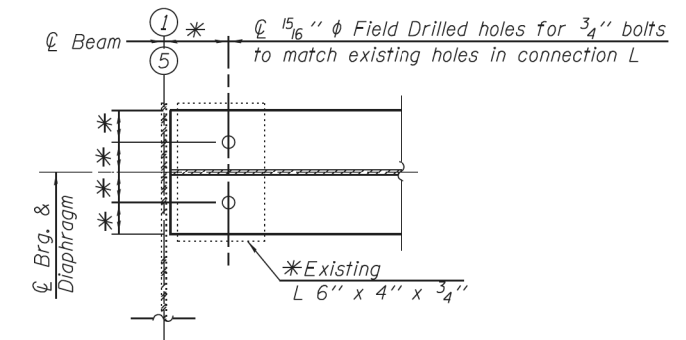


**FRAMING PLAN**



**VIEW A-A END DIAPHRAGM-D1 ELEVATION**

(Drawn for fascia beam, interior beam detail similar)  
(12 Required)



**FOR INFORMATION ONLY**

MODEL: Default  
 FILE: Abut1.dwg  
 C:\p\barcom\data\links\pwr\DOT\Documents\DOT - Offices\lhartec - 1\Projects\124818\CADD\Drawings\DOT - Offices\lhartec - 1\Projects\124818-eh-1.dwg

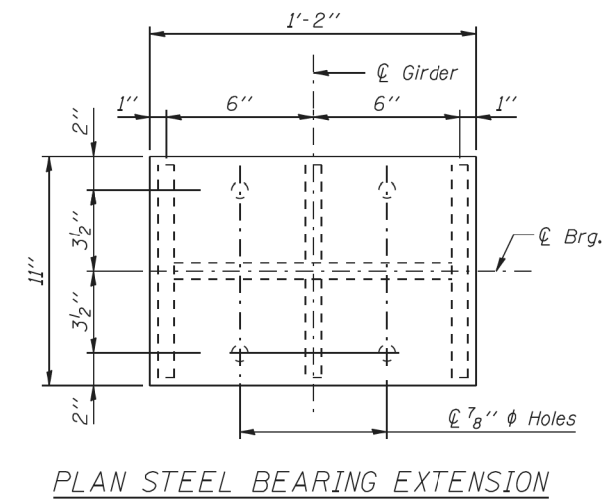
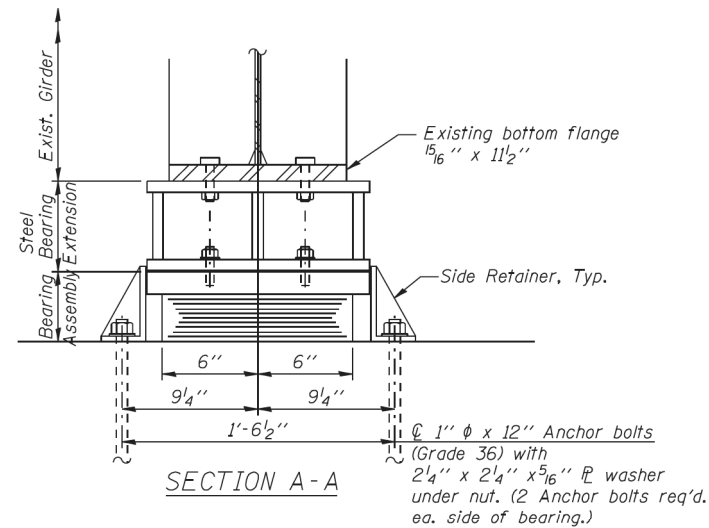
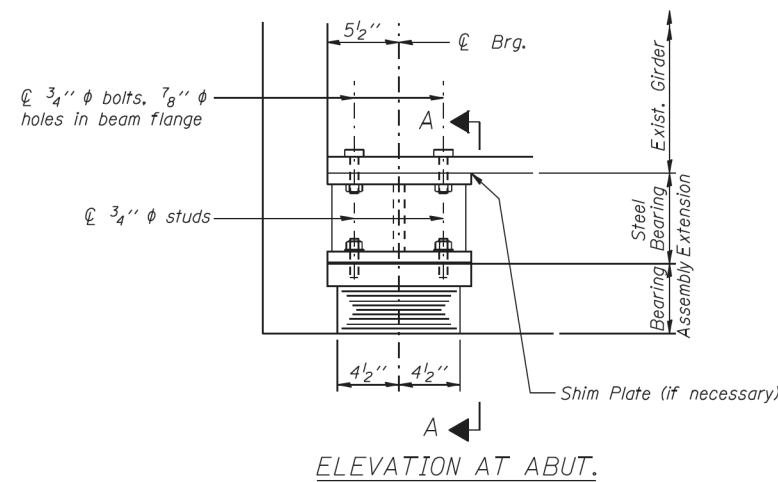
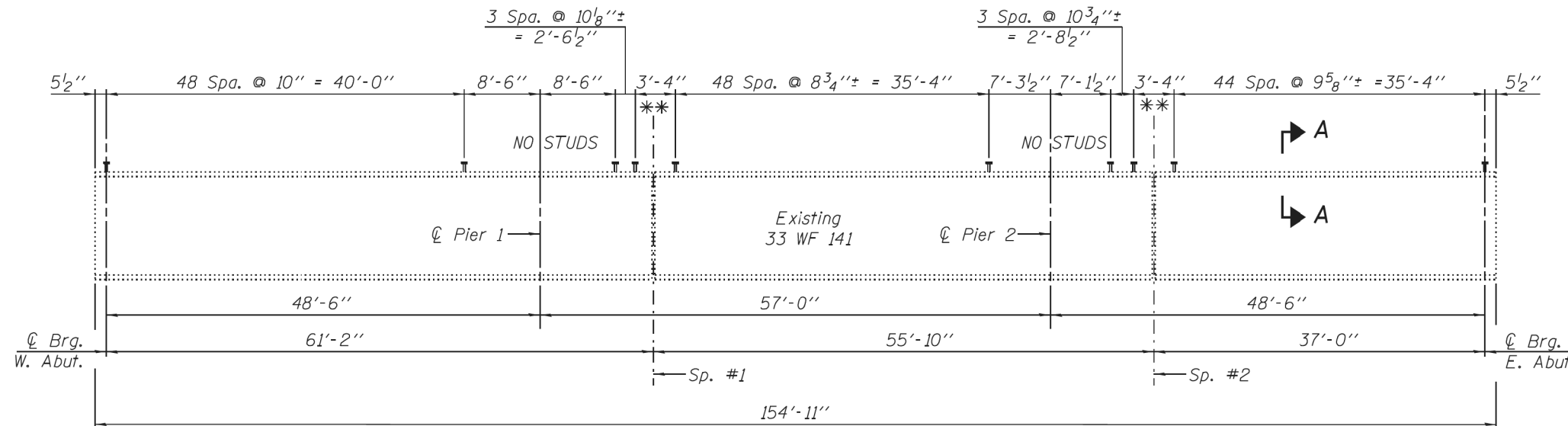
USER NAME = gorenautab	DESIGNED -	REVISED -
	DRAWN -	REVISED -
PLOT SCALE = 100.0000' / in.	CHECKED -	REVISED -
PLOT DATE = 10/16/2019	DATE -	REVISED -

**STATE OF ILLINOIS**  
**DEPARTMENT OF TRANSPORTATION**

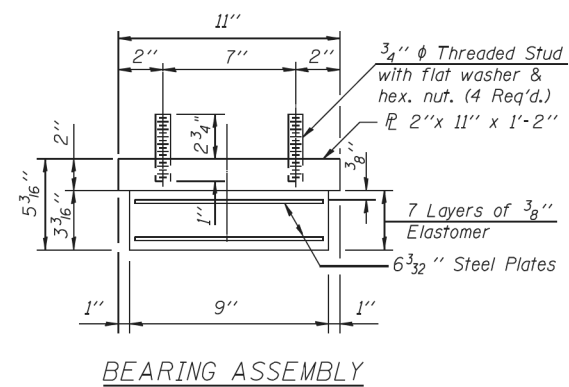
<b>EXISTING BRIDGE FRAMING PLAN</b> <b>IL 120 (BELVIDERE RD) OVER CP RR (SN 049-0048;0049)</b>		
SCALE:	SHEET 2 OF 3 SHEETS	STA. TO STA.

F.A.P. RTE. 333	SECTION 2018-062-BP	COUNTY LAKE	TOTAL SHEETS 17	SHEET NO. 5
ILLINOIS FED. AID PROJECT CONTRACT NO. 62G86				

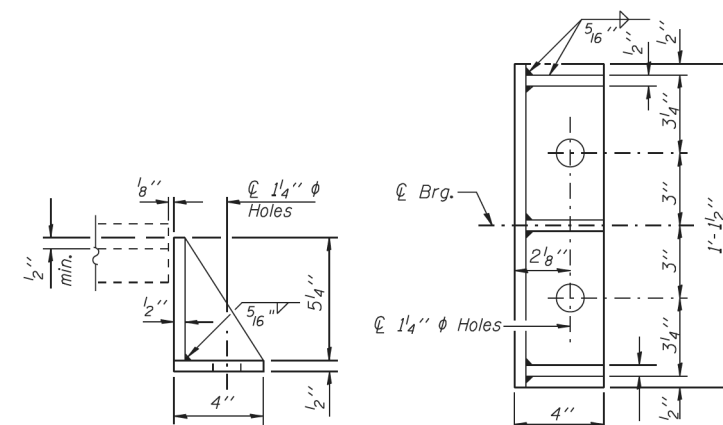
**FOR INFORMATION ONLY**



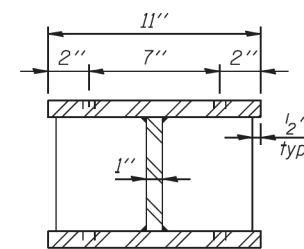
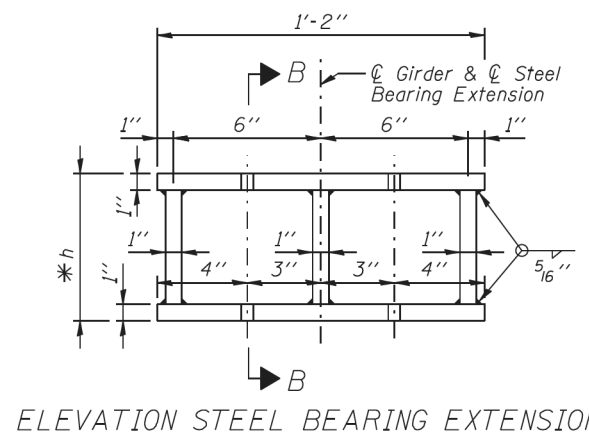
TYPE I ELASTOMERIC EXP. BRG. AT ABUT.



Note: Shim plates shall not be placed under Bearing Assembly.



Equivalent rolled angle with stiffeners will be allowed in lieu of welded plates.



STEEL BEARING EXTENSION

MODEL: Default FILE: AbutBearing.dwg PLOT DATE: 10/16/2019 PROJECT: IL120 BELVIDERE RD OVER CP RR (SN 049-0048;0049) SHEET: 3 OF 3

USER NAME = gorenautab	DESIGNED -	REVISED -
	DRAWN -	REVISED -
PLOT SCALE = 100.0000' / in.	CHECKED -	REVISED -
PLOT DATE = 10/16/2019	DATE -	REVISED -

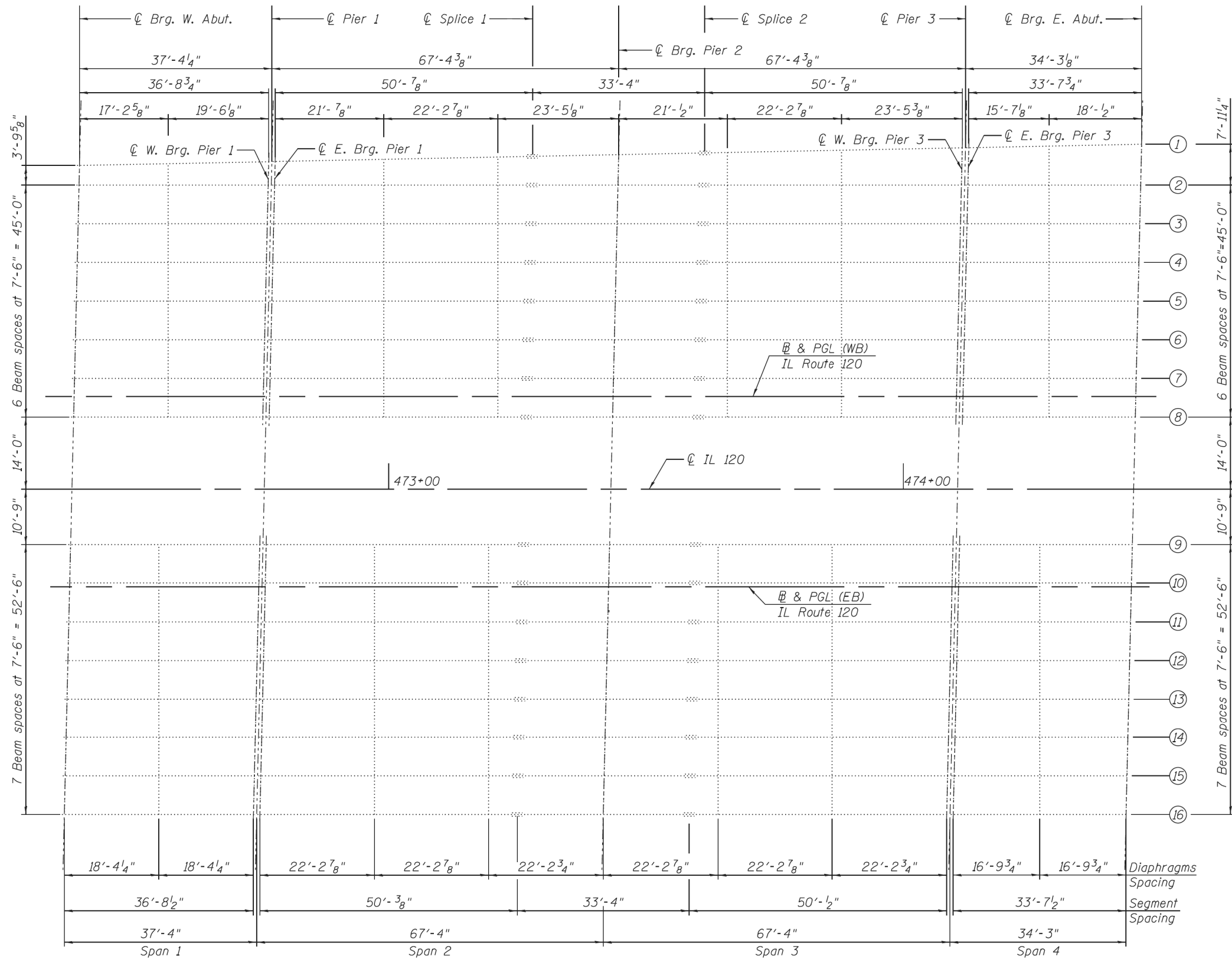
STATE OF ILLINOIS  
DEPARTMENT OF TRANSPORTATION

EXISTING BRIDGE BEAM AND BEARINGS  
IL 120 (BELVIDERE RD) OVER CP RR (SN 049-0048;0049)

SCALE: SHEET 3 OF 3 SHEETS STA. TO STA.

F.A.P. RTE. 333	SECTION 2018-062-BP	COUNTY LAKE	TOTAL SHEETS 17	SHEET NO. 6
CONTRACT NO. 62G86			ILLINOIS FED. AID PROJECT	





**EXISTING FRAMING PLAN**



**FOR INFORMATION ONLY**

MODEL: Default  
 FILE: \\blakec:\pub\blakecom\dat\illinois\pwr\WIDOT\Documents\DOT\_Offices\blakec\1\Projects\134818\CADD\Drawings\134818\_sht-eb-01.dgn

USER NAME = gorenautab	DESIGNED -	REVISED -
	DRAWN -	REVISED -
PLOT SCALE = 100.0000' / in.	CHECKED -	REVISED -
PLOT DATE = 10/16/2019	DATE -	REVISED -

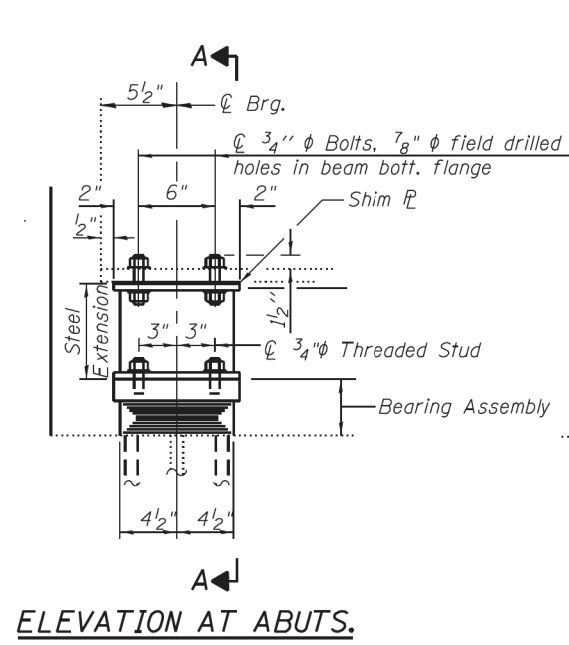
**STATE OF ILLINOIS  
DEPARTMENT OF TRANSPORTATION**

<b>EXISTING BRIDGE FRAMING PLAN</b>	
<b>IL 120 (BELVIDERE RD) OVER GREENLEAF ST (SN 049-0125; 0126)</b>	
SCALE:	SHEET 2 OF 5 SHEETS STA. TO STA.

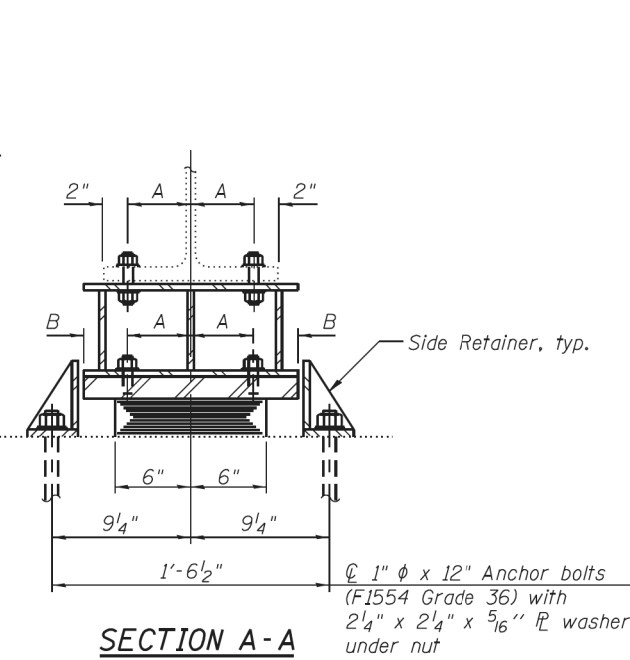
F.A.P. RTE.	SECTION	COUNTY	TOTAL SHEETS	SHEET NO.
333	2018-062-BP	LAKE	17	8
CONTRACT NO. 62G86				
ILLINOIS FED. AID PROJECT				



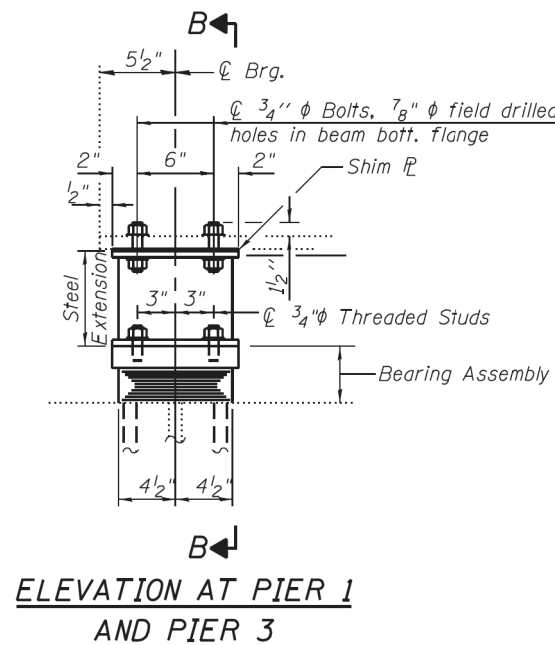




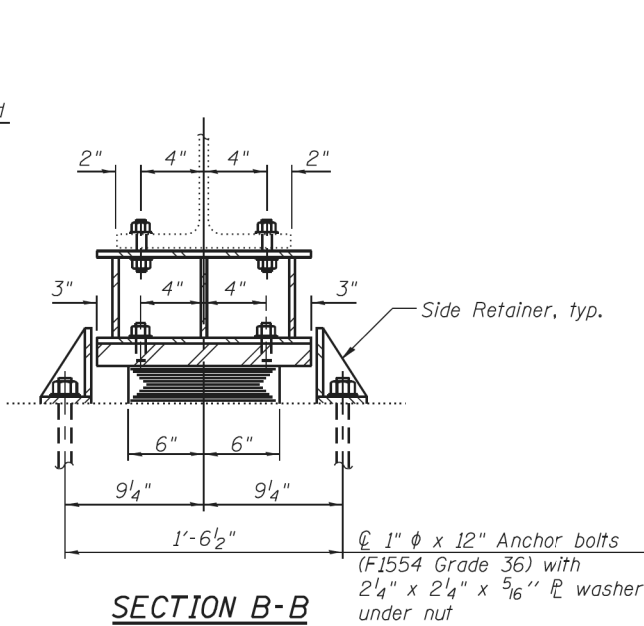
ELEVATION AT ABUTS.



SECTION A-A

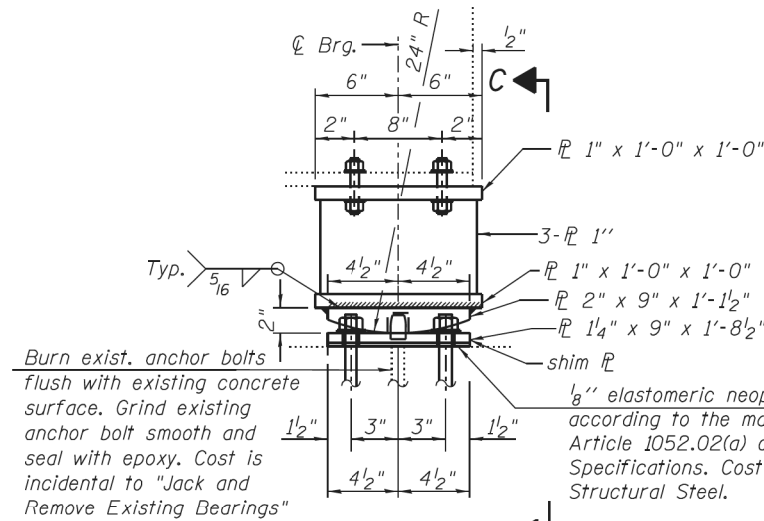


ELEVATION AT PIER 1 AND PIER 3

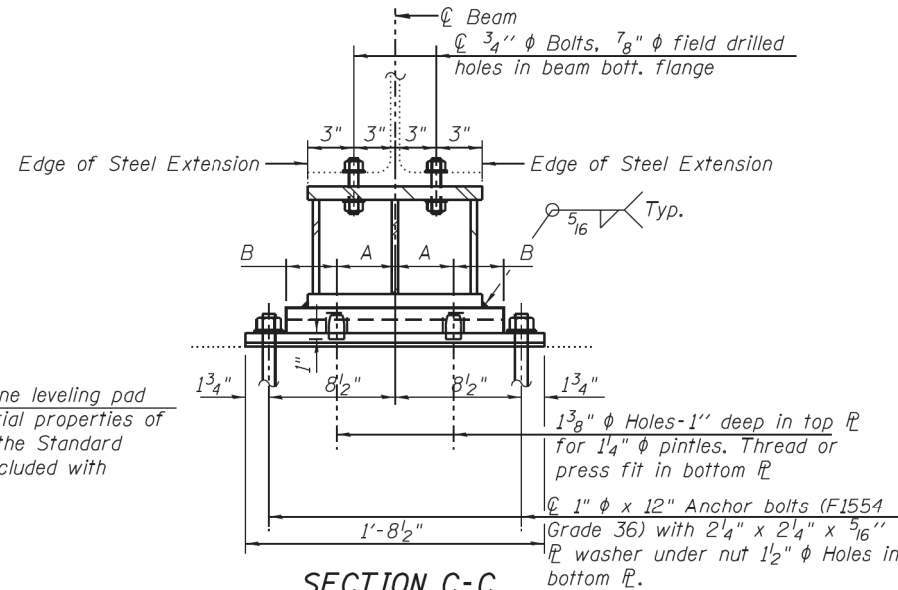


SECTION B-B

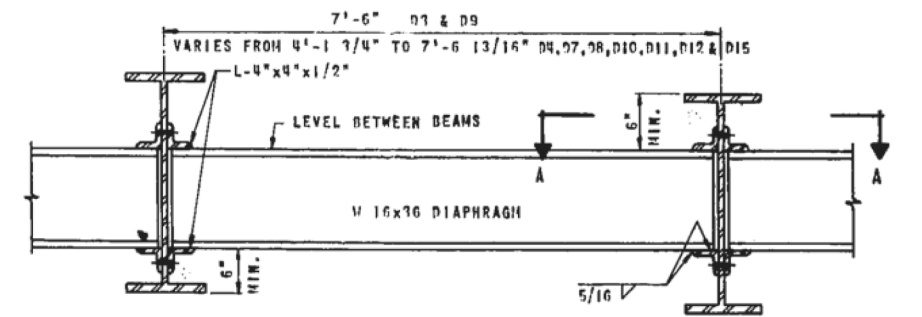
TYPE I ELASTOMERIC EXP. BRG.



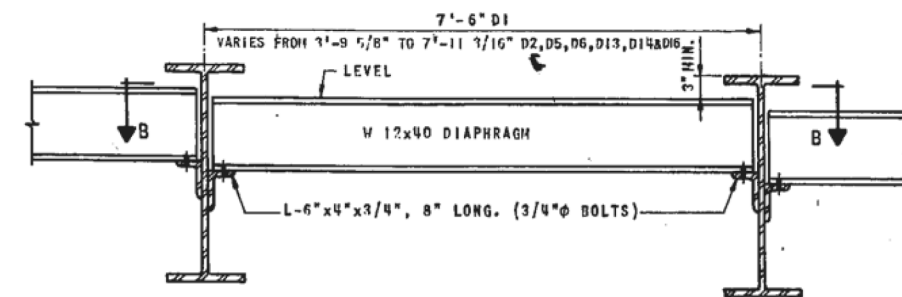
ELEVATION AT PIER 1 AND PIER 3



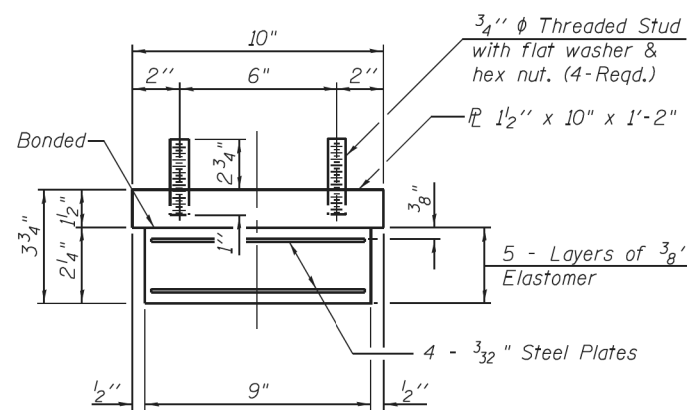
SECTION C-C



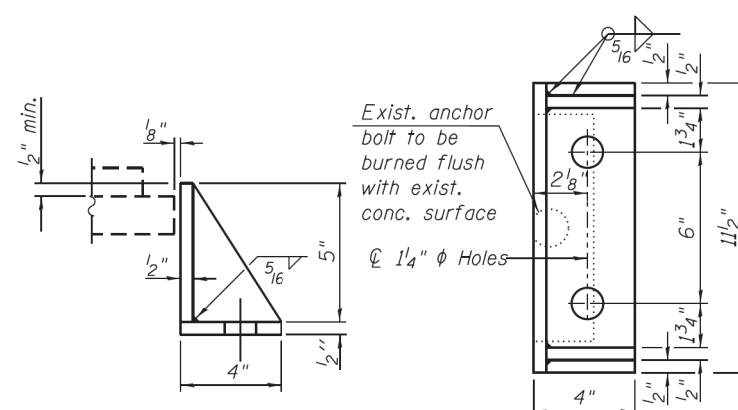
ELEVATION - INTERMEDIATE DIAPHRAGGS  
SCALE: 3/4" = 1'-0"



ELEVATION - END DIAPHRAGGS



BEARING ASSEMBLY



SIDE RETAINER

FOR INFORMATION ONLY

MODEL: Default  
FILE: 333-2018-062-BP-IL120-049-0125-0126.dwg  
PROJECT: 333-2018-062-BP-IL120-049-0125-0126.dwg  
DATE: 10/16/2019

USER NAME = gorenautab	DESIGNED -	REVISED -
PLOT SCALE = 100.0000' / in.	DRAWN -	REVISED -
PLOT DATE = 10/16/2019	CHECKED -	REVISED -
	DATE -	REVISED -

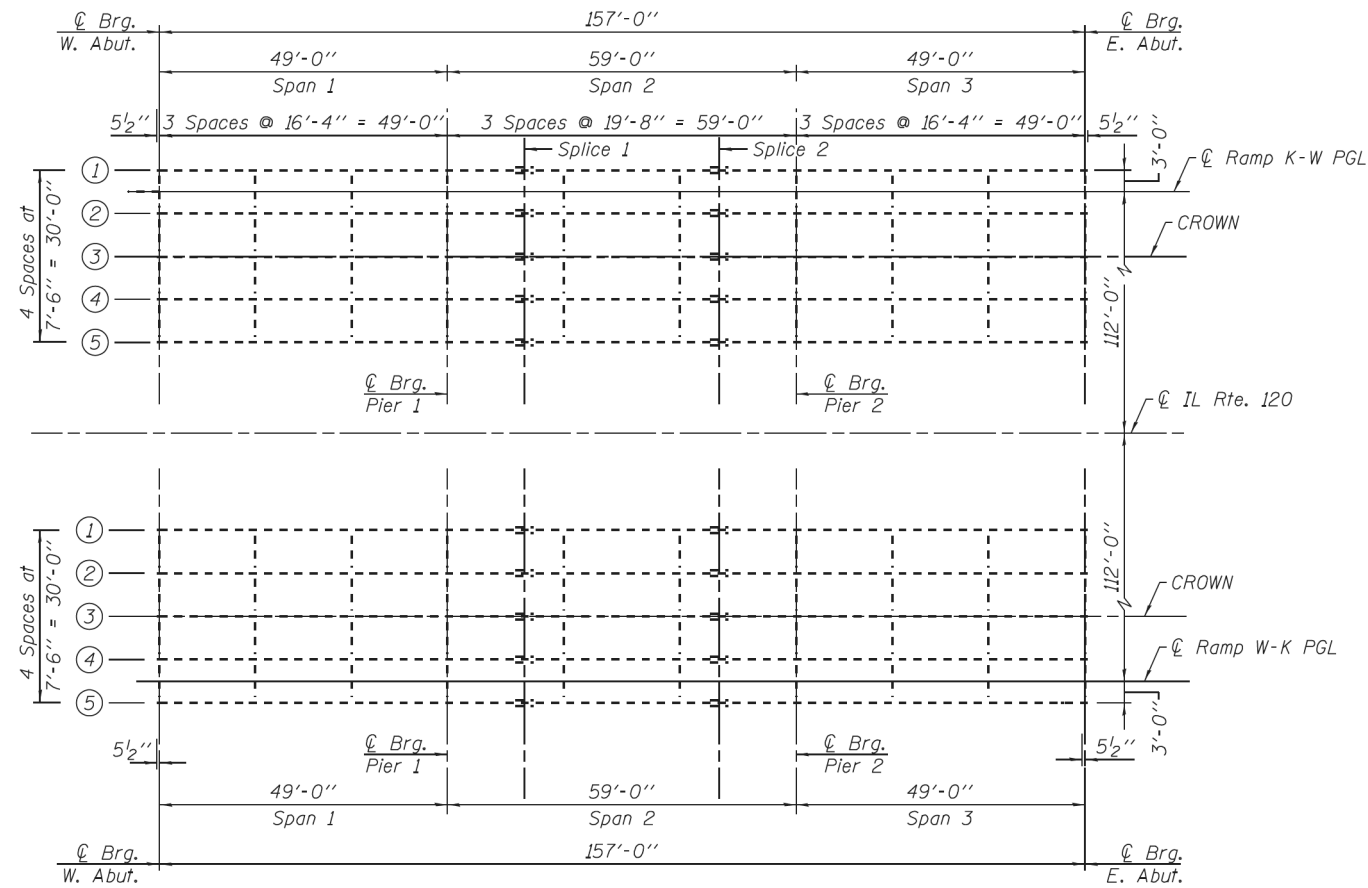
STATE OF ILLINOIS  
DEPARTMENT OF TRANSPORTATION

EXISTING BRIDGE DIAPHRAGMS AND BEARINGS	
IL 120 (BELVIDERE RD) OVER GREENLEAF ST (SN 049-0125; 0126)	
SCALE:	SHEET 4 OF 5 SHEETS STA. TO STA.

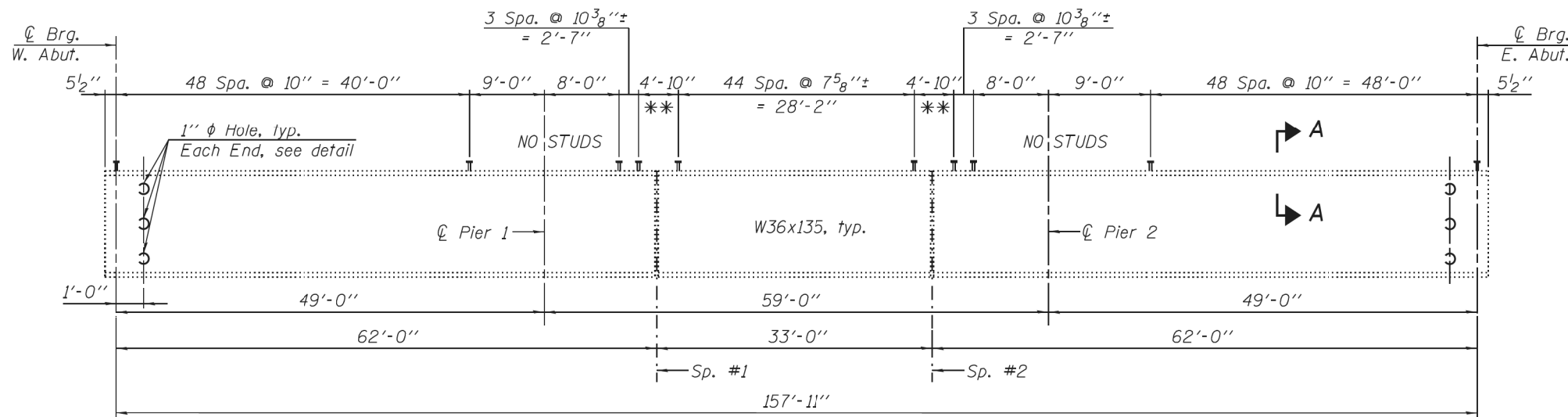
F.A.P. RTE. 333	SECTION 2018-062-BP	COUNTY LAKE	TOTAL SHEETS 17	SHEET NO. 10
CONTRACT NO. 62G86				
ILLINOIS FED. AID PROJECT				



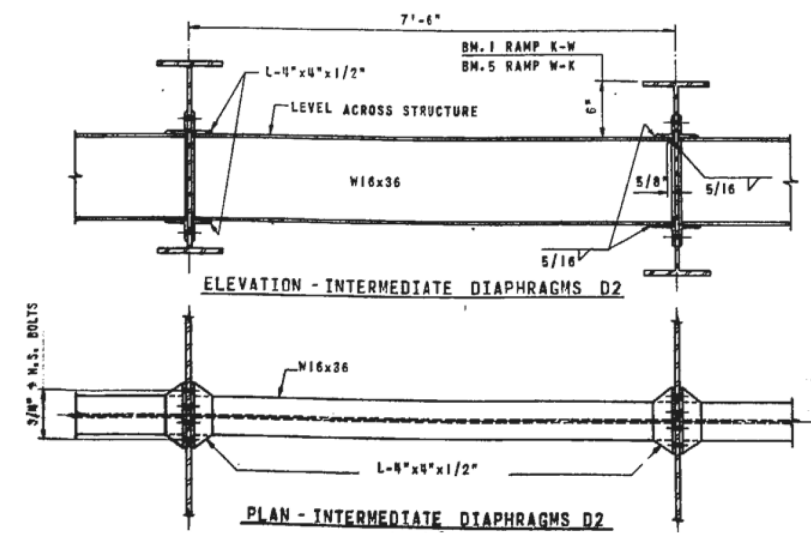




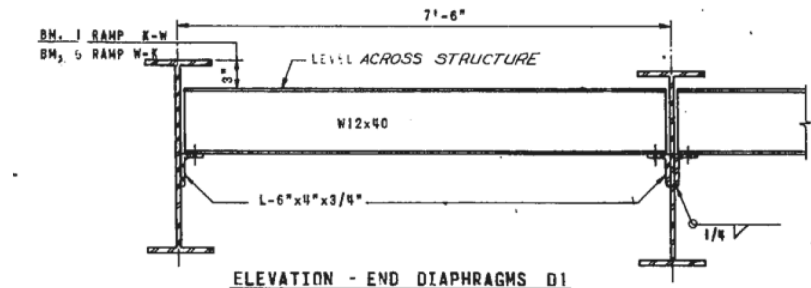
**FRAMING PLAN**



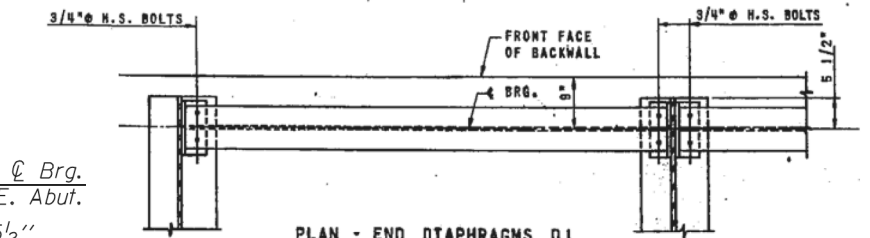
**BEAM ELEVATION**



**ELEVATION - INTERMEDIATE DIAPHRAGMS D2**



**ELEVATION - END DIAPHRAGMS D1**



**PLAN - END DIAPHRAGMS D1**

**FOR INFORMATION ONLY**

MODEL: Default  
 FILE: Abutment\_Plan.dwg  
 PROJECT: I:\Projects\134818\134818\134818\134818\134818.dwg  
 USER: gorenautab  
 DATE: 10/16/2019

USER NAME = gorenautab	DESIGNED -	REVISED -
DRAWN -	REVISIONS -	
PLOT SCALE = 100.0000' / in.	CHECKED -	REVISIONS -
PLOT DATE = 10/16/2019	DATE -	REVISIONS -

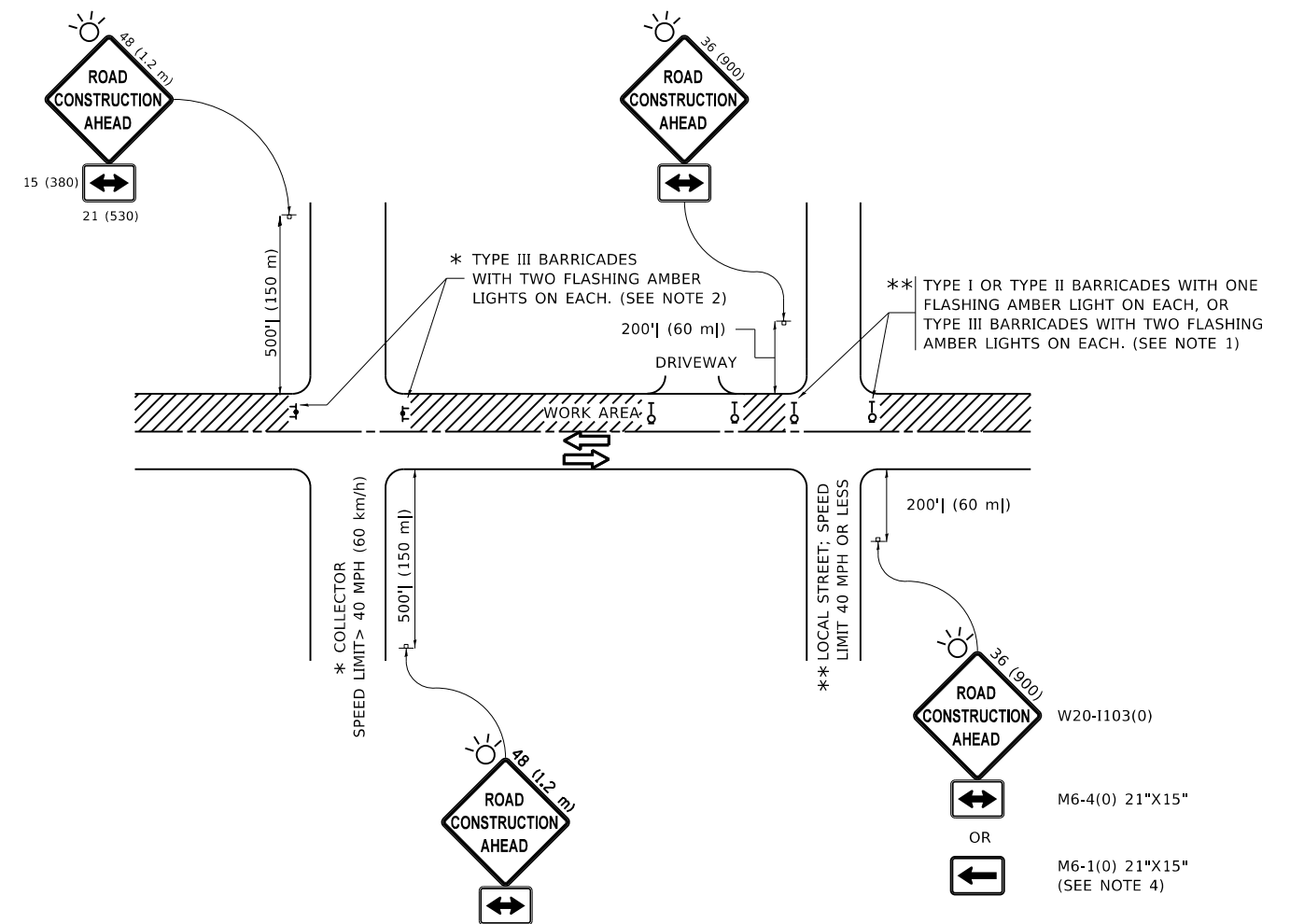
**STATE OF ILLINOIS  
DEPARTMENT OF TRANSPORTATION**

**EXISTING BRIDGE FRAMING PLAN. GREENLEAF ST RAMPS  
TO IL 120 (BELVIDERE RD) OVER CP RR (SN 049-0129; 0130)**

SCALE: SHEET 2 OF 3 SHEETS STA. TO STA.

F.A.P. RTE. 333	SECTION 2018-062-BP	COUNTY LAKE	TOTAL SHEETS 17	SHEET NO. 13
CONTRACT NO. 62G86			ILLINOIS FED. AID PROJECT	





**NOTES:**

1. SIDE ROAD WITH A SPEED LIMIT OF 40 MPH (60 km/h) OR LESS AS SHOWN ON THE DRAWING AND AS DIRECTED BY THE ENGINEER:
  - a) ONE "ROAD CONSTRUCTION AHEAD" SIGN 36 x 36 (900x900) WITH A FLASHER MOUNTED ON IT APPROXIMATELY 200' (60 m) IN ADVANCE OF THE MAIN ROUTE.
  - b) THE CLOSED PORTION OF THE MAIN ROUTE SHALL BE PROTECTED BY BLOCKING WITH TYPE I, TYPE II OR TYPE III BARRICADES, 1/3 OF THE CROSS SECTION OF THE CLOSED PORTION.
2. SIDE ROAD WITH A SPEED LIMIT GREATER THAN 40 MPH (60 km/h) AS SHOWN ON THE DRAWING AND AS DIRECTED BY THE ENGINEER:
  - a) ONE "ROAD CONSTRUCTION AHEAD" SIGN 48 x 48 (1.2 m x 1.2 m) WITH A FLASHER MOUNTED ON IT APPROXIMATELY 500' (150 m) IN ADVANCE OF THE MAIN ROUTE.
  - b) BLOCKING WITH TYPE III BARRICADES, 1/2 OF THE CROSS SECTION OF THE CLOSED PORTION.
3. CONES MAY BE SUBSTITUTED FOR BARRICADES OR DRUMS AT HALF THE SPACING DURING DAY OPERATIONS. CONES SHALL BE A MINIMUM OF 28 (710) IN HEIGHT.
4. SIGNING AND THE WORK ZONE, A SINGLE HEADED ARROW (M6-1) SHALL BE USED IN LIEU OF THE DOUBLE HEADED ARROW (M6-4).
5. WHEN WORK IS BEING PERFORMED ON A SIDE ROAD OR DRIVEWAY, FOLLOW THE APPLICABLE STANDARD(S). THE DIRECTIONAL ARROW (M6-1 OR M6-4) SHALL BE COVERED OR REMOVED WHEN NO LONGER CONSISTENT WITH THE TRAFFIC CONTROL SET-UP.
6. ADVANCE WARNING SIGNS ARE TO BE OMITTED ON DRIVEWAYS UNLESS OTHERWISE SPECIFIED IN THE PLANS OR BY THE ENGINEER.
7. THE TRAFFIC CONTROL AND PROTECTION FOR SIDE ROADS, INTERSECTIONS, AND DRIVEWAYS SHALL BE INCLUDED IN THE COST OF SPECIFIED TRAFFIC CONTROL STANDARDS OR ITEMS.

All dimensions are in inches (millimeters) unless otherwise shown.

MODEL: Default  
 FILE: \\blm1c01.pw.state.il.us\pub\rooms\dat\illinois\pwr\DOT\Documents\DOT\_Offices\Dir\dtc\_1\Project\ID134818\CADD\Drawings\Design\DESIGN.dwg

USER NAME = gorenautab	DESIGNED - L.H.A.	REVISED - A. HOUSEH 10-15-96
PLOT SCALE = 100.0000' / in.	CHECKED -	REVISED - T. RAMMACHER 01-06-00
PLOT DATE = 10/16/2019	DATE - 06-89	REVISED - A. SCHUETZE 07-01-13
		REVISED - A. SCHUETZE 09-15-16

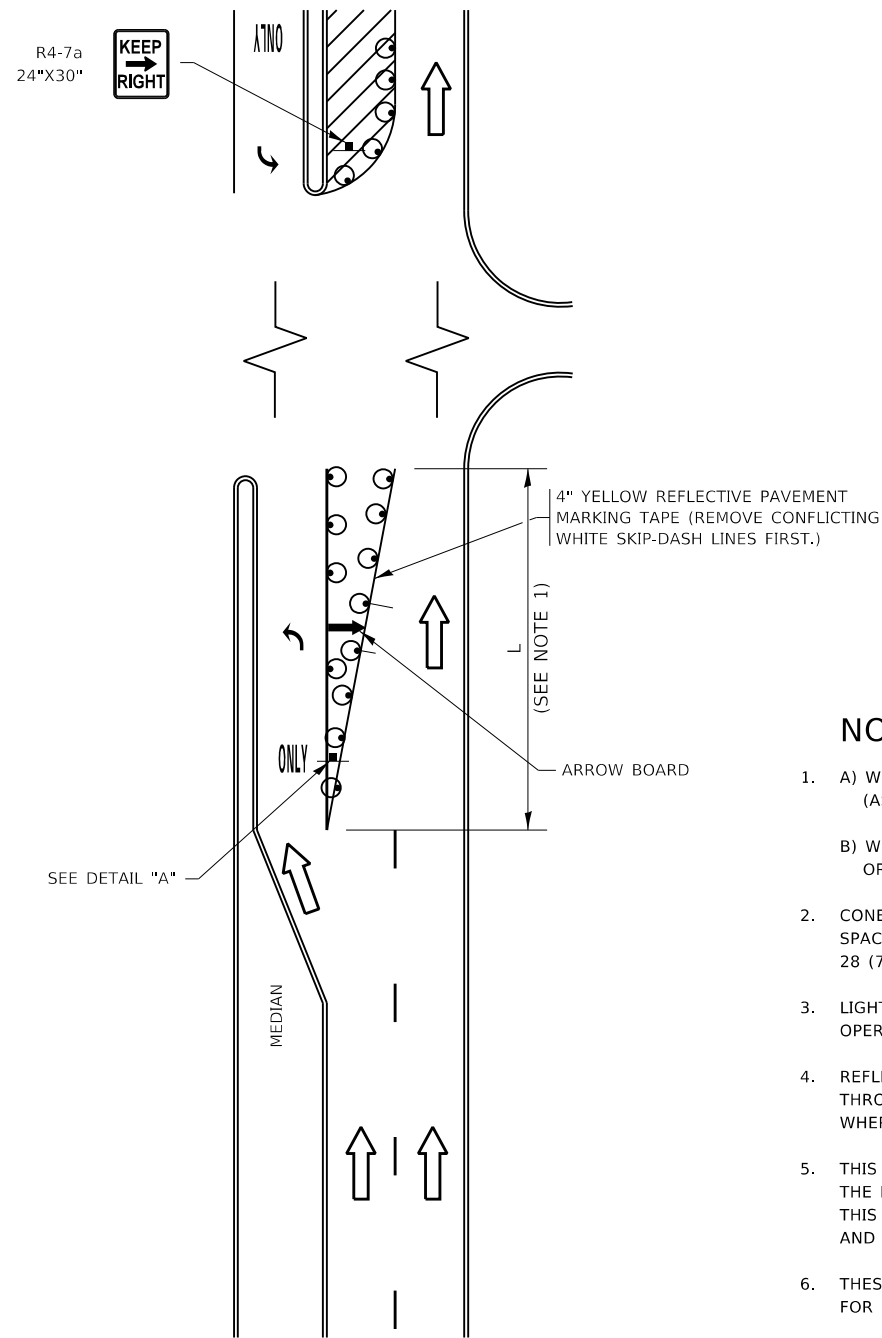
**STATE OF ILLINOIS  
DEPARTMENT OF TRANSPORTATION**

**TRAFFIC CONTROL AND PROTECTION FOR  
SIDE ROADS, INTERSECTIONS, AND DRIVEWAYS**

SCALE: NONE SHEET 1 OF 1 SHEETS STA. TO STA.

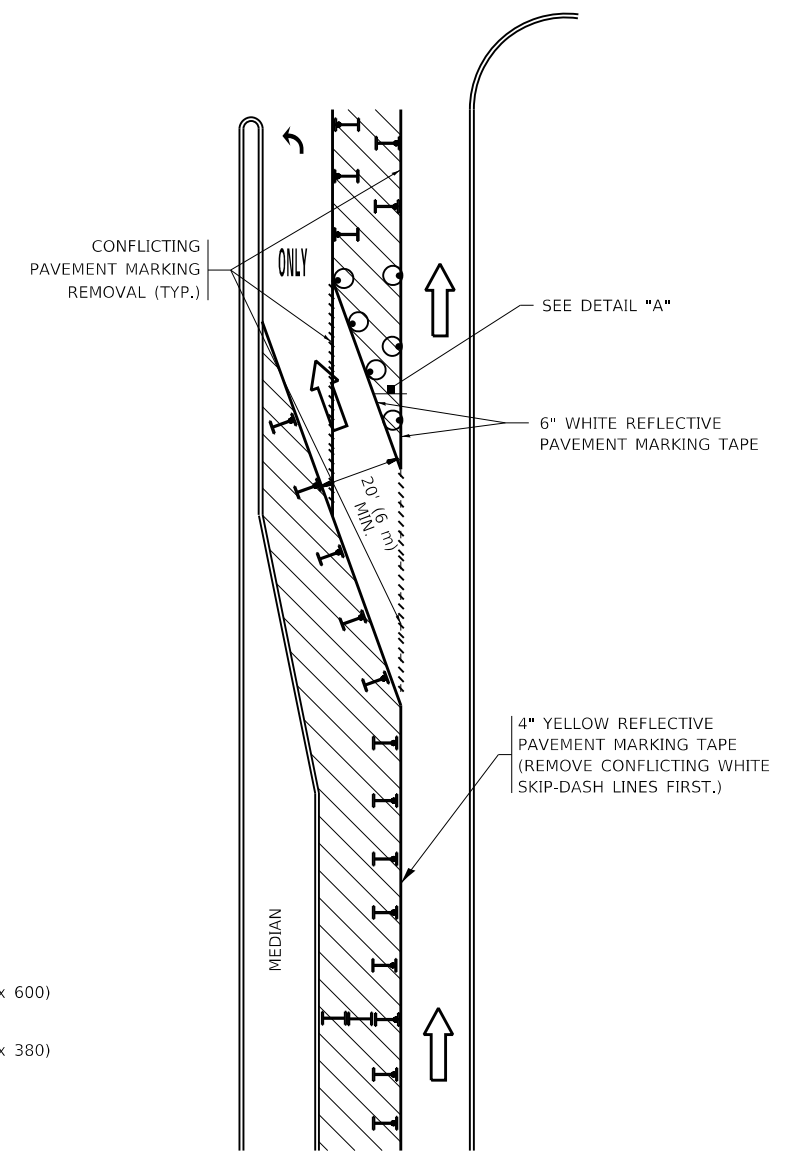
F.A.P. RTE.	SECTION	COUNTY	TOTAL SHEETS	SHEET NO.
333	2018-062-BP	LAKE	17	15
TC-10			CONTRACT NO. 62686	
ILLINOIS FED. AID PROJECT				

# TURN BAY ENTRANCE AT START OF LANE CLOSURE TAPER



**FIGURE 1**

# TURN BAY ENTRANCE WITHIN A LANE CLOSURE



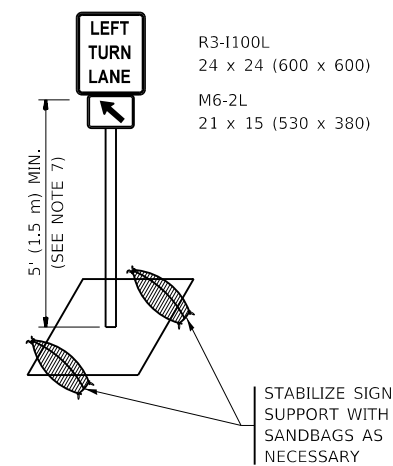
**FIGURE 2**

### LEGEND

- WORK AREA
- LANE OPEN TO TRAFFIC
- ARROW BOARD
- TYPE I OR II BARRICADE OR DRUM WITH STEADY BURN LIGHT
- DRUM WITH STEADY BURN LIGHT
- SIGN ASSEMBLY
- TYPE I OR II CHECK BARRICADE WITH FLASHING LIGHT

### NOTES:

1. A) WHEN "L" IS ≤ THE STORAGE LENGTH OF THE TURN LANE (AS SHOWN IN FIG. 1), USE FIGURE 1.  
B) WHEN "L" IS > THE STORAGE LENGTH OF THE TURN LANE OR THE TURN LANE IS WITHIN THE LANE CLOSURE, USE FIGURE 2.
2. CONES MAY BE SUBSTITUTED FOR BARRICADES OR DRUMS AT HALF THE SPACING DURING DAY OPERATIONS. CONES SHALL BE A MINIMUM OF 28 (710) IN HEIGHT.
3. LIGHTS WILL NOT BE REQUIRED ON BARRICADES OR DRUMS FOR DAY OPERATIONS. ALL LIGHTS SHALL BE MONODIRECTIONAL.
4. REFLECTIVE TEMPORARY PAVEMENT MARKINGS SHALL BE PLACED THROUGHOUT THE BARRICADED AREAS OF EACH TURN BAY AS SHOWN WHERE THE CLOSURE TIME IS GREATER THAN FOURTEEN (14) DAYS.
5. THIS APPLICATION ALSO APPLIES WHEN WORK IS BEING PERFORMED IN THE RIGHT LANE(S) AND THE RIGHT TURN BAY IS TO REMAIN OPEN. UNDER THIS CONDITION, "RIGHT TURN LANE" R3-1100R 24 x 24 (600 x 600) AND M6-2R 21 x 15 (530 x 380) SHALL BE USED.
6. THESE CONTROLS SHALL SUPPLEMENT MAINLINE TRAFFIC CONTROL FOR LANE CLOSURES.
7. THE SIGNS SHALL BE MOUNTED ABOVE THE BARRICADES/DRUMS ON SEPARATE SIGN SUPPORTS THAT MEET NCHRP 350 OR MASH REQUIREMENTS.
8. TRAFFIC CONTROL AND PROTECTION AT TURN BAYS (TO REMAIN OPEN TO TRAFFIC) SHALL BE INCLUDED IN THE COST OF SPECIFIED TRAFFIC CONTROL STANDARDS OR ITEMS.



**DETAIL A**

All dimensions are in inches (millimeters) unless otherwise shown.

MODEL: Default  
FILE: \\blm\c:\pub\blm\com\dat\illinois\pwr\pww\dot\Documents\DOT\_Offices\Illinet\1\Projects\134818\CADD\Data\Design\DES\54.dgn

USER NAME = gorenautab	DESIGNED - T. RAMMACHER 09-08-94	REVISED - R. BORO 09-14-09
	DRAWN - A. HOUSEH 11-07-95	REVISED - A. SCHUETZE 07-01-13
PLOT SCALE = 100,0000' / in.	CHECKED - A. HOUSEH 10-12-96	REVISED - A. SCHUETZE 09-15-16
PLOT DATE = 10/16/2019	DATE - T. RAMMACHER 01-06-00	REVISED -

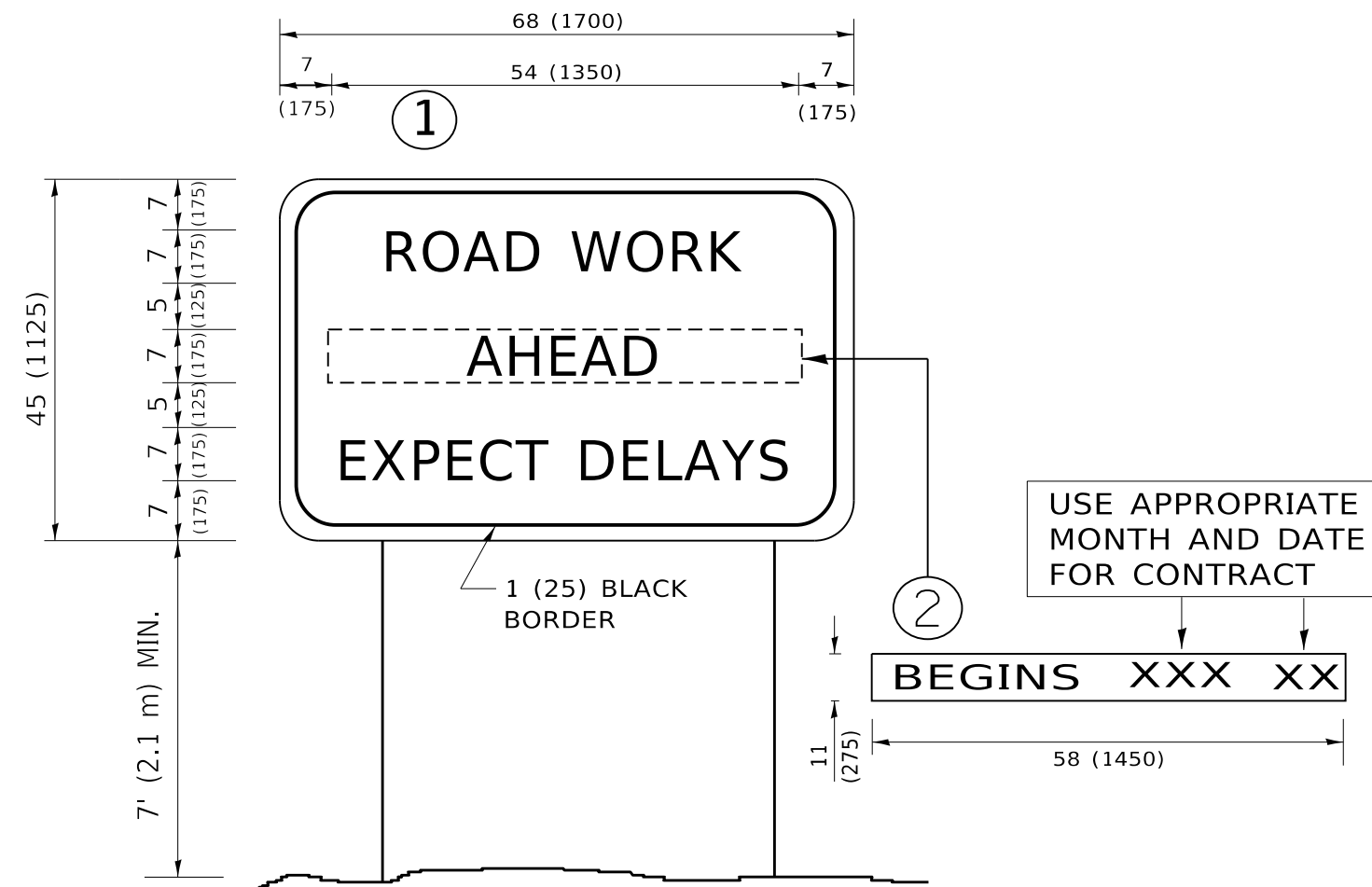
STATE OF ILLINOIS  
DEPARTMENT OF TRANSPORTATION

TRAFFIC CONTROL AND PROTECTION AT TURN BAYS  
(TO REMAIN OPEN TO TRAFFIC)

SCALE: NONE SHEET 1 OF 1 SHEETS STA. TO STA.

F.A.P. RTE. 333	SECTION 2018-062-BP	COUNTY LAKE	TOTAL SHEETS 17	SHEET NO. 16
TC-14		CONTRACT NO. 62G86		
ILLINOIS FED. AID PROJECT				





**NOTES:**

1. USE BLACK LETTERING ON ORANGE BACKGROUND.
2. ERECT SIGNS IN ADVANCE OF THE LOCATION FOR THE "ROAD CONSTRUCTION AHEAD" SIGN AT LOCATIONS AS DIRECTED BY THE ENGINEER.
3. ERECT SIGN ① WITH INSTALLED PANEL ② ONE WEEK PRIOR TO THE START OF CONSTRUCTION.
4. REMOVE PANEL ② SOON AFTER THE START OF CONSTRUCTION.
5. SEE SPECIAL PROVISION FOR "TEMPORARY INFORMATION SIGNING" FOR ADDITIONAL INFORMATION.
6. ONE SIGN ASSEMBLY EQUALS 25.70 SQ. FT. (2.3 SQ. M.)
7. SHALL BE PAID FOR AS TEMPORARY INFORMATION SIGNING.

ALL DIMENSIONS ARE IN INCHES (MILLIMETERS) UNLESS OTHERWISE SHOWN.

MODEL: Default  
 FILE: \\blm1c01.pw.state.il.us\pub\blm1c01\Documents\DOT\_Offices\blm1c01\Projects\134818\CADD\Design\Design.dgn

USER NAME = gorenautab	DESIGNED -	REVISED - R. MIRS 09-15-97
	DRAWN -	REVISED - R. MIRS 12-11-97
PLOT SCALE = 100.0000 ' / in.	CHECKED -	REVISED - T. RAMMACHER 02-02-99
PLOT DATE = 10/16/2019	DATE -	REVISED - C. JUCIUS 01-31-07

**STATE OF ILLINOIS  
DEPARTMENT OF TRANSPORTATION**

**ARTERIAL ROAD  
INFORMATION SIGN**

SCALE: NONE    SHEET 1 OF 1 SHEETS    STA.    TO STA.

F.A.P. RTE.	SECTION	COUNTY	TOTAL SHEETS	SHEET NO.
333	2018-062-BP	LAKE	17	17
TC-22			CONTRACT NO. 62686	
ILLINOIS FED. AID PROJECT				