

026

FULL SHEETS	SECTION	COUNTY	TOTAL SHEETS	SHEET NO.
1328	2019-089-RS&SW	COOK	28	1
ILLINOIS			CONTRACT NO. 62J97	

STATE OF ILLINOIS  
DEPARTMENT OF TRANSPORTATION  
DIVISION OF HIGHWAYS

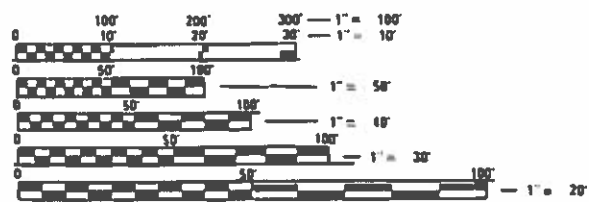
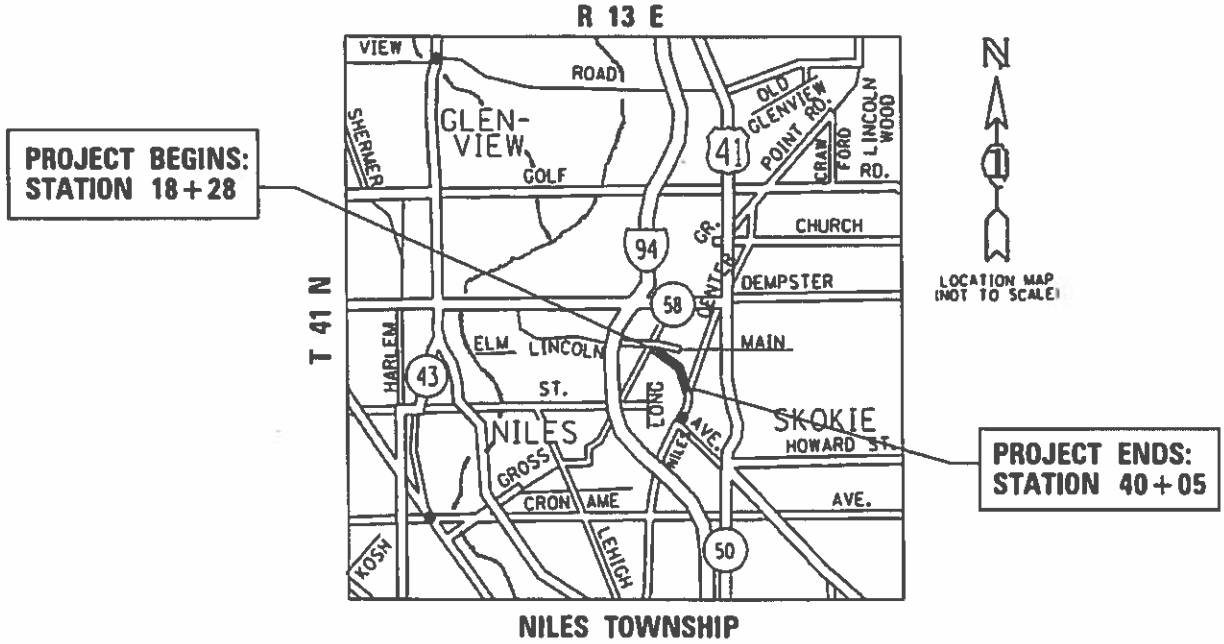
**PROPOSED  
HIGHWAY PLANS**

FAU ROUTE 1328: LINCOLN AVENUE  
SOUTH OF MAIN STREET TO NILES CENTER ROAD  
SECTION: 2019-089-RS&SW  
PROJECT: STP-3EBL(839)  
DESIGNED OVERLAY AND ADA IMPROVEMENTS  
COOK COUNTY  
C-91-052-20

FOR INDEX OF SHEETS, SEE SHEET NO. 2

THIS PROJECT IS LOCATED IN THE VILLAGE OF SKOKIE

**TRAFFIC DATA**  
2017 ADT = 6,600 VPD  
SPEED LIMIT = 30 MPH



FULL SIZE PLANS HAVE BEEN PREPARED USING STANDARD ENGINEERING SCALES. REDUCED SIZED PLANS WILL NOT CONFORM TO STANDARD SCALES. IN MAKING MEASUREMENTS ON REDUCED PLANS, THE ABOVE SCALES MAY BE USED.

J.U.L.I.E.  
JOINT UTILITY LOCATION INFORMATION FOR EXCAVATION  
1-800-892-0123  
OR 811

GROSS LENGTH = NET LENGTH = 2,117 FEET = 0.41 MILES

PROJECT ENGINEER: DANIEL WILGREEN (847) 705-4240  
PROJECT MANAGER: FAWAD AQUEEL: (847)705-4247

TEMP. CONTRACT NO. 62J97

STATE OF ILLINOIS  
DEPARTMENT OF TRANSPORTATION  
DIVISION OF HIGHWAYS

SUBMITTED December 4, 2019

[Signature] REGION ENGINEER

[Signature] ENGINEER OF DESIGN AND ENVIRONMENT

[Signature] DIRECTOR OF HIGHWAYS PROJECT IMPLEMENTATION

PRINTED BY THE AUTHORITY OF THE STATE OF ILLINOIS

INDEX OF SHEETS

1 TITLE SHEET

2 INDEX OF SHEETS, STATE STANDARDS, AND GENERAL NOTES

3-5 SUMMARY OF QUANTITIES

6-7 TYPICAL SECTIONS

8 ROADWAY AND PAVEMENT MARKING PLAN

9 DETECTOR LOOPS REPLACEMENT PLANS

10-13 ADA CURB RAMP DETAILS

14 FRAMES AND LIDS ADJUSTMENT WITH MILLING (BD-08)

15 PAVEMENT PATCHING FOR HMA SURFACED PAVEMENT (BD-22)

16 CURB OR CURB AND GUTTER REMOVAL AND REPLACEMENT (BD-24)

17 BUTT JOINT AND HMA TAPER DETAILS (BD-32)

18 TRAFFIC CONTROL AND PROTECTION FOR SIDE ROADS, INTERSECTIONS AND DRIVEWAYS (TC-10)

19 TYPICAL APPLICATIONS RAISED REFLECTIVE PAVEMENT MARKERS (SNOW PLOW RESISTANT) (TC-11)

20 DISTRICT ONE TYPICAL PAVEMENT MARKINGS (TC-13)

21 TRAFFIC CONTROL & PROTECTION OF TURN BAYS (TO REMAIN OPEN TO TRAFFIC) (TC-14)

22 SHORT TERM PAVEMENT MARKING LETTERS & SYMBOLS (TC-16)

23 ARTERIAL ROAD INFORMATION SIGN (TC-22)

24 DRIVEWAY ENTRANCE SIGNING (TC-26)

25 DISTRICT 1 DETECTOR LOOP INSTALLATION DETAILS FOR ROADWAY RESURFACING (TS-07)

26 PROJECT DETAIL FOR SINGLE PERPENDICULAR CURB RAMPS (PD-02)

27 PROJECT DETAIL FOR DEPRESSED CORNER CURB RAMPS (PD-05)

28 PROJECT DETAIL FOR PARALLEL CURB RAMPS (PD-06)

STATE STANDARDS

000001-07 STANDARD SYMBOLS, ABBREVIATION AND PATTERNS

424001-11 PERPENDICULAR CURB RAMPS FOR SIDEWALKS

424006-04 DIAGONAL CURB RAMPS FOR SIDEWALKS

424021-05 DEPRESSED CORNER FOR SIDEWALKS

424031-02 MEDIAN PEDESTRIAN CROSSINGS

442201-03 CLASS C AND D PATCHES

604001-05 FRAMES AND LIDS TYPE 1

604026-03 FRAMES AND GRATES TYPE 6

606001-07 CONCRETE CURB TYPE B AND COMBINATION CONCRETE CURB AND GUTTER

701006-05 CONCRETE CURB TYPE B AND COMBINATION CONCRETE CURB AND GUTTER

701011-04 CONCRETE CURB TYPE B AND COMBINATION CONCRETE CURB AND GUTTER

701101-05 OFF-ROAD OPERATIONS, MULTILANE, 15' TO 24" FROM PAVEMENT EDGE

701301-04 LANE CLOSURE, 2L, 2W SHORT TIME OPERATIONS

701311-03 LANE CLOSURE, 2L, 2W MOVING OPERATIONS - DAY ONLY

701501-06 URBAN LANE CLOSURE, 2 LANE, 2 WAY, UNDEVIDED

701502-09 URBAN LANE CLOSURE, 2 LANE, 2 WAY WITH BIDIRECTIONAL LEFT TURN LANE

701701-10 URBAN LANE CLOSURE, MULTILANE INTERSECTION

701801-06 SIDEWALK CORNER OR CROSSWALK CLOSURE

701901-08 TRAFFIC CONTROL DEVICES

780001-05 TYPICAL PAVEMENT MARKINGS

814001-03 HANDHOLES

886001-01 DETECTOR LOOP INSTALLATIONS

886006-01 TYPICAL LAYOUTS FOR DETECTOR LOOPS

GENERAL NOTES

1. THE CONTRACTOR WILL NOT BE ALLOWED TO SET UP A YARD OR FIELD OFFICE ON STATE PROPERTY WITHOUT THE WRITTEN PERMISSION OF THE DEPARTMENT.
2. ANY PAVEMENT MARKINGS AND RAISED REFLECTIVE PAVEMENT MARKERS OBLITERATED BY MILLING AND RESURFACING OPERATIONS ON SIDE STREETS AND ENTRANCES SHALL BE REPLACED AND PAID FOR IN KIND.
3. BEFORE BEGINNING ANY WORK, THE CONTRACTOR SHALL RETAIN AND RECORD FOR FUTURE REFERENCE, ALL EXISTING PAVEMENT MARKING LINES (AND RAISED REFLECTIVE PAVEMENT MARKERS) IN ORDER THAT THESE LOCATIONS CAN BE RE-ESTABLISHED FOR STRIPING. EXACT LOCATIONS OF ALL PAVEMENT MARKINGS SHALL BE AS DIRECTED BY THE ENGINEER.
4. ALL PAVEMENT PATCHING LOCATIONS WILL BE DETERMINED IN THE FIELD BY THE ENGINEER.
5. IT SHALL BE THE CONTRACTOR'S RESPONSIBILITY TO VERIFY ALL DIMENSIONS AND CONDITIONS EXISTING IN THE FIELD PRIOR TO CONSTRUCTION AND ORDERING OF MATERIALS.
6. THE THICKNESS OF THE HMA MIXTURE SHOWN ON THE PLANS IS THE NOMINAL THICKNESS. DEVIATIONS FROM THE NOMINAL THICKNESS WILL BE PERMITTED WHEN SUCH DEVIATIONS OCCUR DUE TO IRREGULARITIES IN THE EXISTING SURFACE OR BASE ON WHICH THE HMA MIXTURE IS PLACED.
7. THE CONTRACTOR SHALL BE REQUIRED TO PROVIDE ACCESS TO ABUTTING PROPERTY AT ALL TIMES DURING THE CONSTRUCTION OF THIS PROJECT.
8. DO NOT SCALE PLANS FOR CONSTRUCTION DIMENSIONS.
9. PAVEMENT MARKING TAPE, TYPE III SHALL BE USED FOR SHORT TERM PAVEMENT MARKINGS ON ALL FINAL SURFACES.
10. WHEN MILLED PAVEMENT IS OPEN TO TRAFFIC, THE MAXIMUM GRADE DIFFERENTIAL BETWEEN PASSES OF THE MILLING MACHINE SHALL NOT EXCEED 1 1/2 INCHES WHERE THE SPEED LIMIT IS 40 MPH OR LESS, AND 1 INCH. WHERE THE SPEED LIMIT IS OVER 40 MPH. WITH WRITTEN APPROVAL FROM THE RESIDENT ENGINEER, A MAXIMUM GRADE DIFFERENTIAL OF 3 INCHES MAY BE ALLOWED IF THE EDGE OF THE MILLING IS SLOPED A MINIMUM OF 1:3 (V:H).
11. BUTT JOINTS WILL BE INSTALLED AT THE ENDS OF RESURFACING (WHERE RESURFACING MEETS EXISTING PAVEMENT) IN ACCORDANCE WITH THE "BUTT JOINT AND HMA TAPER DETAILS" SHEET INCLUDED IN THE PLANS, UNLESS OTHERWISE SPECIFIED.
12. UNLESS OTHER CONDITIONS WARRANT EXTENDED LANE CLOSURE AS DETERMINED AND APPROVED IN WRITING BY THE ENGINEER OR AS PROVIDED FOR IN THE CONTRACT SPECIFICATIONS, OVERNIGHT CLOSURES SHALL NOT BE ALLOWED FOR REHABILITATION PROJECTS INVOLVING DAYTIME MILLING AND RESURFACING OPERATIONS AND CLASS D PATCHING.
13. THE RESIDENT ENGINEER SHALL CONTACT DON CHIARUGI (DON.CHIARUGI@ILLINOIS.GOV), AREA TRAFFIC FIELD ENGINEER, A MINIMUM OF 2 WEEKS PRIOR TO PLACEMENT OF PERMANENT PAVEMENT MARKINGS.
14. THE CONTRACTOR SHALL CONTACT THE TRAFFIC CONTROL SUPERVISOR (KAPLANA.KANNAN-HOSADURGA@ILLINOIS.GOV), A MINIMUM OF 72 HOURS PRIOR TO BEGINNING WORK.
15. CURB & GUTTER REMOVAL AND REPLACEMENT LOCATIONS WILL BE DETERMINED IN THE FIELD BY THE ENGINEER.
16. CONTRACTOR SHALL MAINTAIN PEDESTRIAN ACCESS AT ALL TIMES DURING CONSTRUCTION
17. THE ENGINEER SHALL REPORT CLEARANCES UNDER THE BRIDGE BEFORE AND AFTER RESURFACING
18. BEFORE STARTING ANY EXCAVATION, THE CONTRACTOR SHALL CALL "J.U.L.I.E." AT (800)-892-0123 OR 811 FOR FIELD LOCATIONS OF BURIED ELECTRIC, TELEPHONE AND GAS UTILITIES. (48 HOUR NOTIFICATION IS REQUIRED)
19. THE CONTRACTOR SHALL COORDINATE CONSTRUCTION ACTIVITIES WITH UTILITY COMPANIES, AND THE VILLAGE OF SKOKIE
20. THE CONTRACTOR SHALL COORDINATE THE REMOVAL OF VILLAGE OWNED ITEMS SUCH AS BENCHES, TRASH RECEPTACLES AND BOLLARDS WITH RESPECTIVE VILLAGE BEFORE THE START OF CONSTRUCTION

REV. - MS

FILE NAME =	USER NAME = alshwabkehym	DESIGNED -	REVISED -	<b>STATE OF ILLINOIS DEPARTMENT OF TRANSPORTATION</b>	<b>INDEX OF SHEET, STATE STANDARDS, AND GENERAL NOTES</b>	F.A.U. RTE.	SECTION	COUNTY	TOTAL SHEETS	SHEET NO.	
pw:\plnroom.dot.illinois.gov\PIDOT\Documents\IDOT Offices\District 1\Projects\0127120\0127120-Design\0127120-sht-gemote.dgn	DRAMA	CHECKED -	REVISED -			1328	2019-089-RS&SW	COOK	28	2	
Default	PLOT SCALE = 100.0000' / 1in.	DATE -	REVISED -			<b>CONTRACT NO. 62J97</b>					
	PLOT DATE = 12/11/2019	DATE -	REVISED -			(ILLINOIS) FED. AID PROJECT					

SCALE: NONE SHEET OF SHEETS STA. TO STA.

URBAN

SUMMARY OF QUANTITIES			TOTAL QUANTITIES	CONSTRUCTION TYPE CODE				
CODE NO	ITEM	UNIT		80% FED 20% STATE 0005 LOCATION COOK COUNTY	100% STATE 0005 LOCATION COOK COUNTY			
20200100	EARTH EXCAVATION	CU YD	29	29				
21101615	TOPSOIL FURNISH AND PLACE, 4"	SO YD	45	45				
25200110	SODDING, SALT TOLERANT	SO YD	45	45				
40600290	BITUMINOUS MATERIALS (TACK COAT)	POUND	6896	6896				
40600400	MIXTURE FOR CRACKS, JOINTS, AND FLANGEWAYS	TON	17	17				
40600982	HOT-MIX ASPHALT SURFACE REMOVAL - BUTT JOINT	SO YD	129	129				
40601005	HOT-MIX ASPHALT REPLACEMENT OVER PATCHES	TON	56	56				
40602978	HOT-MIX ASPHALT BINDER COURSE, IL- 9.5, N50	TON	884	884				
40604060	HOT-MIX ASPHALT SURFACE COURSE, IL-9.5, MIX "D", N50	TON	1203	1203				
42001300	PROTECTIVE COAT	SO YD	616	616				
42400200	PORTLAND CEMENT CONCRETE SIDEWALK 5 INCH	SO FT	2031	2031				
44000157	HOT-MIX ASPHALT SURFACE REMOVAL, 2"	SO YD	1542	1542				

URBAN

SUMMARY OF QUANTITIES			TOTAL QUANTITIES	CONSTRUCTION TYPE CODE				
CODE NO	ITEM	UNIT		80% FED 20% STATE 0005 LOCATION COOK COUNTY	100% STATE 0005 LOCATION COOK COUNTY			
44000164	HOT-MIX ASPHALT SURFACE REMOVAL, 3/4"	SO YD	9188	9188				
44000600	SIDEWALK REMOVAL	SO FT	2031	2031				
44002218	HOT-MIX ASPHALT REMOVAL OVER PATCHES, 1/2"	SO YD	220	220				
44201741	CLASS D PATCHES, TYPE II, 8 INCH	SO YD	83	83				
44201745	CLASS D PATCHES, TYPE III, 8 INCH	SO YD	48	48				
44201747	CLASS D PATCHES, TYPE IV, 8 INCH	SO YD	60	60				
60252800	CATCH BASINS TO BE RECONSTRUCTED	EACH	2	2				
60257900	MANHOLES TO BE RECONSTRUCTED	EACH	2	2				
60266600	VALVE BOXES TO BE ADJUSTED	EACH	3	3				
60300105	FRAMES AND GRATES TO BE ADJUSTED	EACH	4	4				
60300305	FRAMES AND LIDS TO BE ADJUSTED	EACH	2	2				
60406000	FRAMES AND LIDS, TYPE 1, OPEN LID	EACH	5	5				
60406100	FRAMES AND LIDS, TYPE 1, CLOSED LID	EACH	29	29				
66900200	NON-SPECIAL WASTE DISPOSAL *	CU YD	29	29				

\* = SPECIALTY ITEMS  
 △ = NON-PARTICIPATING WORK (100% STATE)

URBAN

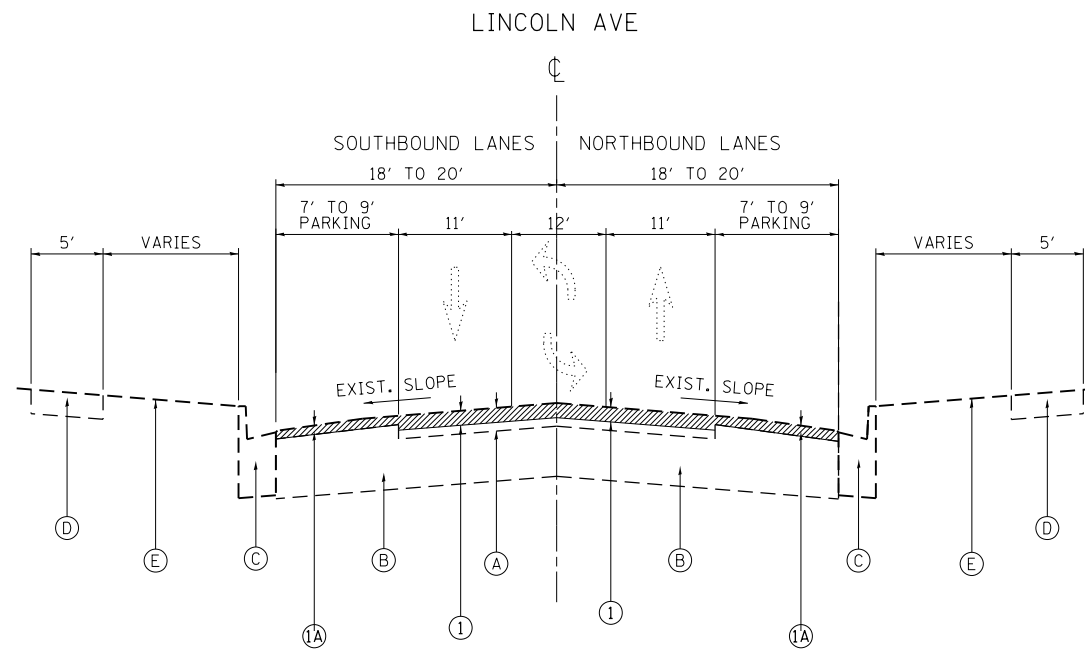
SUMMARY OF QUANTITIES			TOTAL QUANTITIES	CONSTRUCTION TYPE CODE				
CODE NO	ITEM	UNIT		80% FED 20% STATE 0005 LOCATION COOK COUNTY	100% STATE 0005 LOCATION COOK COUNTY			
* 66900530	SOIL DISPOSAL ANALYSIS	EACH	3	3				
* 66901001	REGULATED SUBSTANCES PRE-CONSTRUCTION PLAN	LSUM	1	1				
* 66901003	REGULATED SUBSTANCES FINAL CONSTRUCTION REPORT	LSUM	1	1				
* 66901006	REGULATED SUBSTANCES MONITORING	CAL DA	7	7				
67000400	ENGINEER'S FIELD OFFICE, TYPE A	CAL MO	6	6				
67100100	MOBILIZATION	L SUM	1	1				
70102620	TRAFFIC CONTROL AND PROTECTION, STANDARD 701501	L SUM	1	1				
70102622	TRAFFIC CONTROL AND PROTECTION, STANDARD 701502	L SUM	1	1				
70102635	TRAFFIC CONTROL AND PROTECTION, STANDARD 701701	L SUM	1	1				
70102640	TRAFFIC CONTROL AND PROTECTION, STANDARD 701801	L SUM	1	1				
70300100	SHORT TERM PAVEMENT MARKING	FOOT	2931	2931				
70300150	SHORT TERM PAVEMENT MARKING REMOVAL	SO FT	977	977				

URBAN

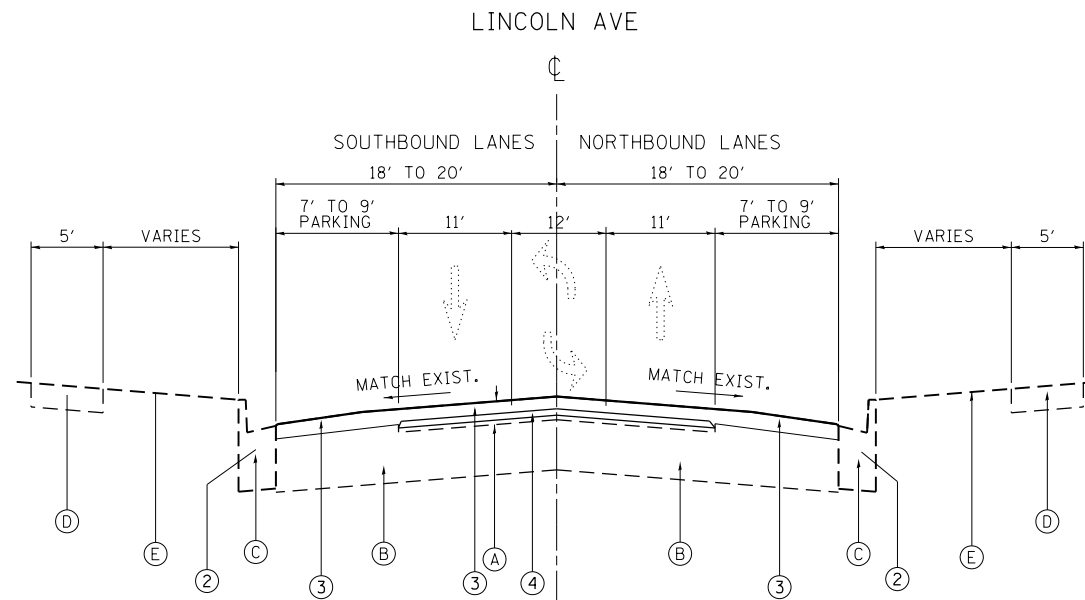
SUMMARY OF QUANTITIES			TOTAL QUANTITIES	CONSTRUCTION TYPE CODE				
CODE NO	ITEM	UNIT		80% FED 20% STATE 0005 LOCATION COOK COUNTY	100% STATE 0005 LOCATION COOK COUNTY			
70300210	TEMPORARY PAVEMENT MARKING LETTERS AND SYMBOLS	SO FT	301.6	301.6				
70300220	TEMPORARY PAVEMENT MARKING - LINE 4"	FOOT	5948	5948				
70300240	TEMPORARY PAVEMENT MARKING - LINE 6"	FOOT	929	929				
70300250	TEMPORARY PAVEMENT MARKING - LINE 8"	FOOT	95	95				
70300260	TEMPORARY PAVEMENT MARKING - LINE 12"	FOOT	315	315				
70300280	TEMPORARY PAVEMENT MARKING - LINE 24"	FOOT	93	93				
70300520	PAVEMENT MARKING TAPE, TYPE III 4"	FOOT	1465	1465				
* 78000100	THERMOPLASTIC PAVEMENT MARKING - LETTERS AND SYMBOLS	SO FT	301.6	301.6				
* 78000200	THERMOPLASTIC PAVEMENT MARKING - LINE 4"	FOOT	5948	5948				
* 78000400	THERMOPLASTIC PAVEMENT MARKING - LINE 6"	FOOT	929	929				
* 78000500	THERMOPLASTIC PAVEMENT MARKING - LINE 8"	FOOT	95	95				
* 78000600	THERMOPLASTIC PAVEMENT MARKING - LINE 12"	FOOT	315	315				

\* = SPECIALTY ITEMS  
 △ = NON-PARTICIPATING WORK (100% STATE)





**EXISTING TYPICAL SECTION**  
STA. 18+28 TO STA. 34+00



**PROPOSED TYPICAL SECTION**  
STA. 18+28 TO STA. 34+00

**LEGEND - EXISTING:**

- (A) HMA SURFACE, ±4.5"
- (B) PORTLAND CEMENT CONCRETE PAVEMENT, ±8"
- (C) COMBINATION CONCRETE CURB & GUTTER
- (D) PCC SIDEWALK
- (E) TOPSOIL

**LEGEND - PROPOSED**

- ① HOT-MIX ASPHALT SURFACE REMOVAL, 3¾"
- ①A HOT-MIX ASPHALT SURFACE REMOVAL, 2"
- ② LOCATIONS OF COMBINATION CONCRETE CURB AND GUTTER REMOVAL AND REPLACEMENT WILL BE DETERMINED IN THE FIELD BY THE RESIDENT ENGINEER/TECHNICIAN.
- ③ HOT-MIX ASPHALT SURFACE COURSE, IL-9.5, MIX "D", N50, 2"
- ④ HOT-MIX ASPHALT BINDER COURSE, IL-9.5, N50, 1¾"

**HOT-MIX ASPHALT MIXTURE REQUIREMENTS**

MIXTURE TYPE	AIR VOIDS @ Ndes	OMP
--------------	------------------	-----

**ROADWAY RESURFACING:**

HOT-MIX ASPHALT SURFACE COURSE, MIX "D", N50 (IL 9.5 mm), 2"	4.0% AT 50 GYR.	QC/OA
HOT-MIX ASPHALT BINDER COURSE, IL-9.5 N50, 1¾"	4.0% AT 50 GYR.	QC/OA

**PARKING LANE:**

HOT-MIX ASPHALT SURFACE COURSE, MIX "D", N50 (IL 9.5 mm), 2"	4.0% AT 50 GYR.	QC/OA
--	-----------------	-------

**HOT-MIX ASPHALT PATCHING:**

CLASS D PATCHES (HMA BINDER IL-19 mm)	4% AT 70 GYR.	QC/OA
HMA REPLACEMENT OVER PATCHES (HMA BINDER IL-19 mm)	4% AT 70 GYR.	QC/OA

OMP Designation: Quality Control/Quality Assurance (QC/OA); Quality Control for Performance (QCP); Pay for Performance (PFP)

**NOTES:**

THE UNIT WEIGHT USED TO CALCULATE ALL HMA SURFACE MIXTURE QUANTITIES IS 112 LBS/SO YD/IN.

THE "AC TYPE" FOR POLYMERIZED HMA MIXES SHALL BE "SBS/SBR PG 76-22" AND FOR NON-POLYMERIZED HMA THE "AC TYPE" SHALL BE "PG 64-22" UNLESS MODIFIED BY DISTRICT ONE SPECIAL PROVISIONS.

FOR USE OF RECYCLED MATERIALS SEE SPECIAL PROVISIONS.

QUALITY MANAGEMENT PROGRAM (OMP) IDENTIFIES THE PARTICULAR QUALITY CONTROL SPECIFICATION THAT APPLIES TO THE HMA MIXTURE.

THE CONTRACTOR SHALL PATCH THE ROADWAY FIRST, THEN DO PAVEMENT MILLING

LONGTUDINAL JOINT SEALANT SHALL BE PLACED OVER THE THE HMA BINDER COURSE, IL-9.5, N50

MODEL: Default  
FILE: h:\mhc\p\pub\haronom.d\at\links\poc\p\WIDOT\Documents\DOT\_Offices\Dist\ctc\_1\Projects\127120\CADD\Drawings\127120-sh-cy-rpl-sal.dgn

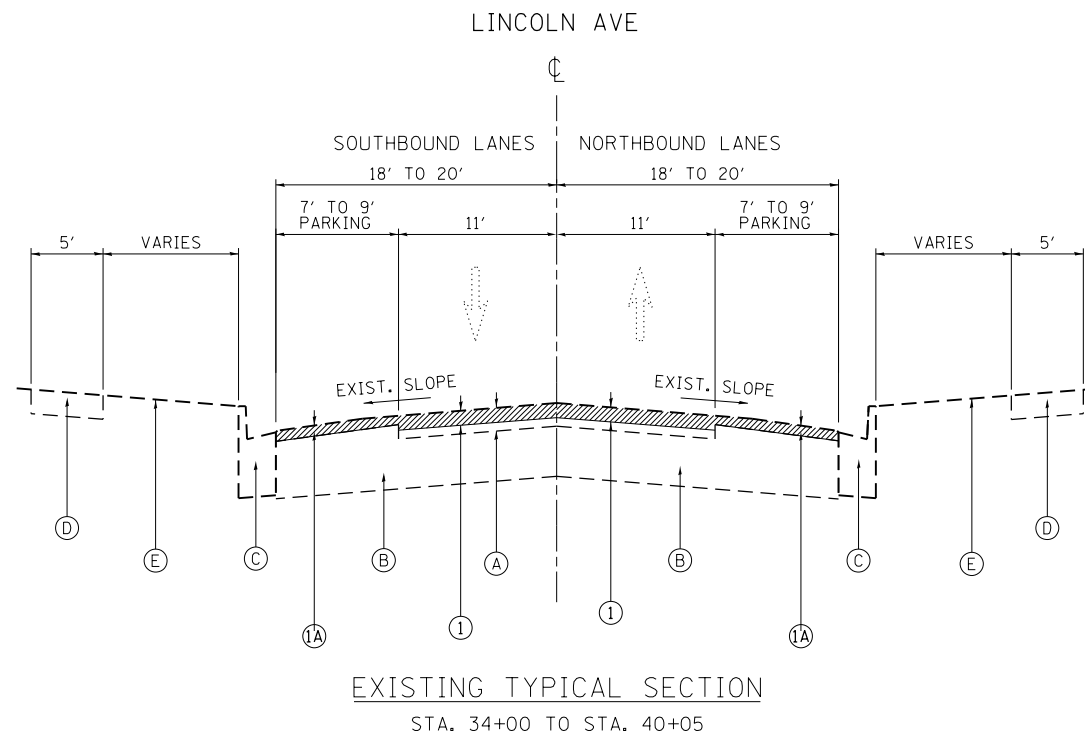
USER NAME = alshawa@kehym	DESIGNED -	REVISED -
	DRAWN -	REVISED -
PLOT SCALE = 100.0000' / in.	CHECKED -	REVISED -
PLOT DATE = 12/11/2019	DATE -	REVISED -

**STATE OF ILLINOIS  
DEPARTMENT OF TRANSPORTATION**

**LINCOLN AVE  
SOUTH OF MAIN ST. TO NILES CENTER RD**

SCALE: SHEET OF SHEETS STA. TO STA.

F.A.U. RTE.	SECTION	COUNTY	TOTAL SHEETS	SHEET NO.
1328	2019-089-R5&SW	COOK	28	6
ILLINOIS FED. AID PROJECT			CONTRACT NO. 62J97	

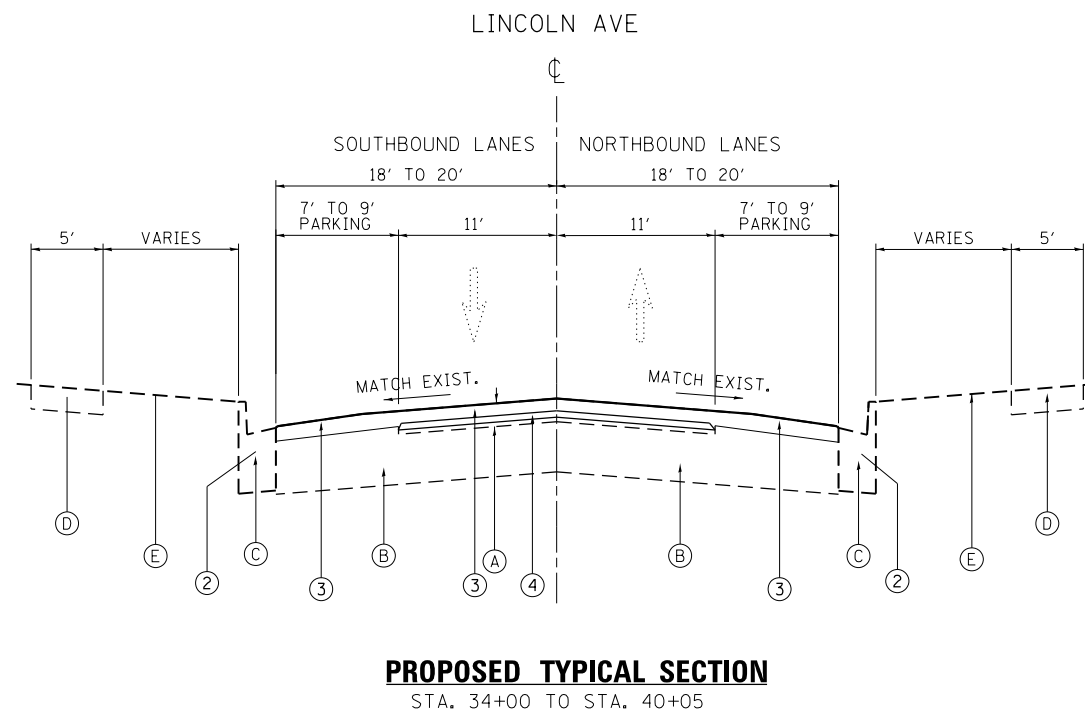


**LEGEND - EXISTING:**

- (A) HMA SURFACE, ±4.5"
- (B) PORTLAND CEMENT CONCRETE PAVEMENT, ±8"
- (C) COMBINATION CONCRETE CURB & GUTTER
- (D) PCC SIDEWALK
- (E) TOPSOIL

**LEGEND - PROPOSED**

- ① HOT-MIX ASPHALT SURFACE REMOVAL, 3¾"
- ①A HOT-MIX ASPHALT SURFACE REMOVAL, 2"
- ② LOCATIONS OF COMBINATION CONCRETE CURB AND GUTTER REMOVAL AND REPLACEMENT WILL BE DETERMINED IN THE FIELD BY THE RESIDENT ENGINEER/TECHNICIAN.
- ③ HOT-MIX ASPHALT SURFACE COURSE, IL-9.5, MIX "D", N50, 2"
- ④ HOT-MIX ASPHALT BINDER COURSE, IL-9.5, N50, 1¾"
- ⑤ COMBINATION CONCRETE CURB AND GUTTER REMOVAL AND REPLACEMENT



**PROPOSED TYPICAL SECTION**

STA. 34+00 TO STA. 40+05

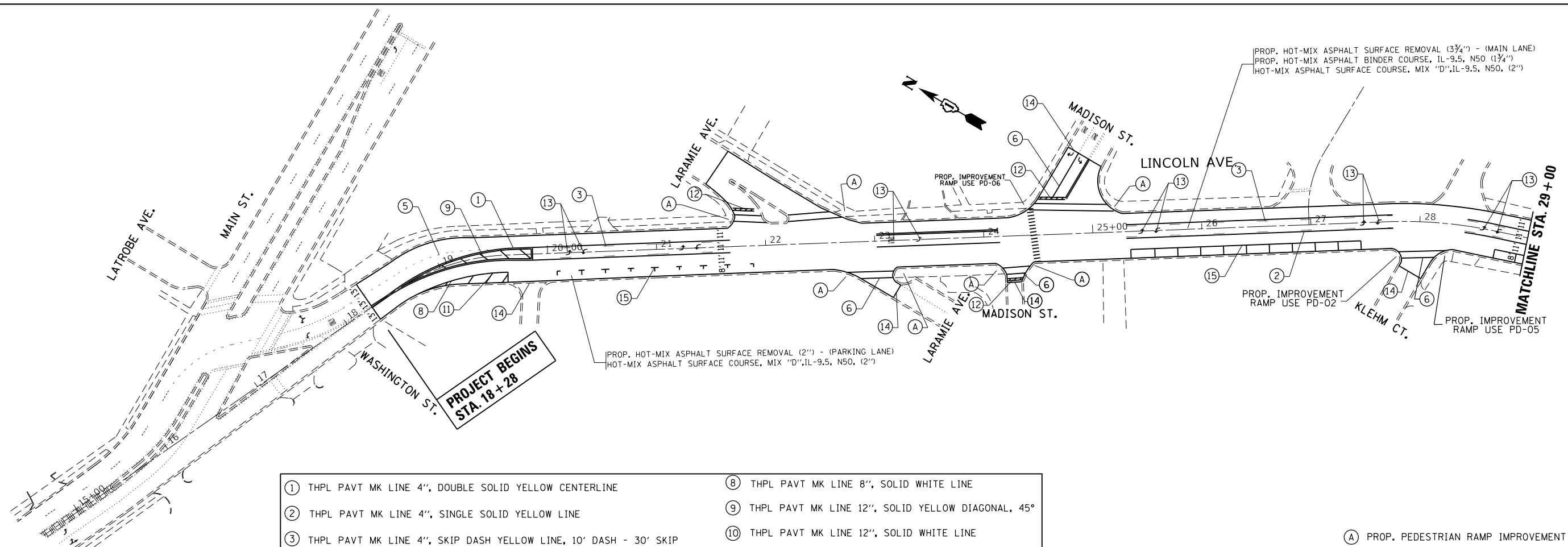
USER NAME = alshawabkehym	DESIGNED -	REVISED -
	DRAWN -	REVISED -
PLOT SCALE = 100.0000' / in.	CHECKED -	REVISED -
PLOT DATE = 12/11/2019	DATE -	REVISED -

**STATE OF ILLINOIS  
DEPARTMENT OF TRANSPORTATION**

**LINCOLN AVE  
SOUTH OF MAIN ST. TO NILES CENTER RD**

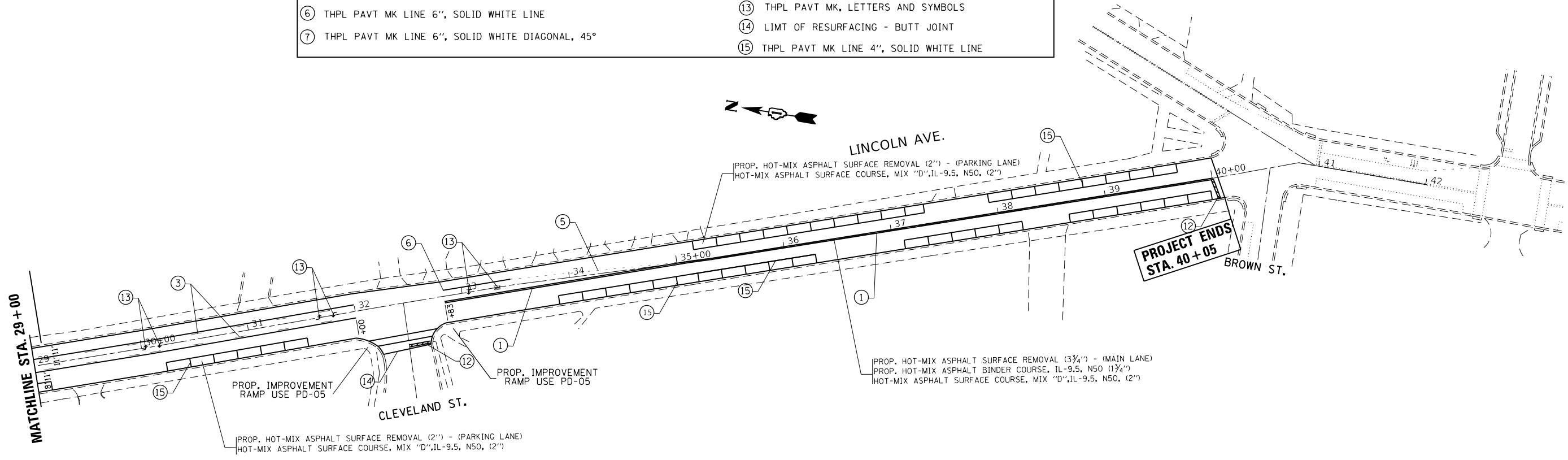
SCALE: SHEET OF SHEETS STA. TO STA.

F.A.U. RTE.	SECTION	COUNTY	TOTAL SHEETS	SHEET NO.
1328	2019-089-R5&SW	COOK	28	7
			CONTRACT NO. 62J97	
		ILLINOIS	FED. AID PROJECT	



- |  |   |
|--|---|
| ① THPL PAVT MK LINE 4", DOUBLE SOLID YELLOW CENTERLINE                 | ⑧ THPL PAVT MK LINE 8", SOLID WHITE LINE            |
| ② THPL PAVT MK LINE 4", SINGLE SOLID YELLOW LINE                       | ⑨ THPL PAVT MK LINE 12", SOLID YELLOW DIAGONAL, 45° |
| ③ THPL PAVT MK LINE 4", SKIP DASH YELLOW LINE, 10' DASH - 30' SKIP     | ⑩ THPL PAVT MK LINE 12", SOLID WHITE LINE           |
| ④ THPL PAVT MK LINE 4", SKIP DASH WHITE LANE LINE, 10' DASH - 30' SKIP | ⑪ THPL PAVT MK LINE 12", SOLID WHITE DIAGONAL, 45°  |
| ⑤ THPL PAVT MK LINE 6", SKIP DASH WHITE LANE LINE, 2' DASH - 6' SKIP   | ⑫ THPL PAVT MK LINE 24", SOLID WHITE STOP BAR       |
| ⑥ THPL PAVT MK LINE 6", SOLID WHITE LINE                               | ⑬ THPL PAVT MK, LETTERS AND SYMBOLS                 |
| ⑦ THPL PAVT MK LINE 6", SOLID WHITE DIAGONAL, 45°                      | ⑭ LIMIT OF RESURFACING - BUTT JOINT                 |
|  | ⑮ THPL PAVT MK LINE 4", SOLID WHITE LINE            |

Ⓐ PROP. PEDESTRIAN RAMP IMPROVEMENT



MODEL: Default  
 FILE: \\s:\p\barcom\da\illinois\p\w\DOT\Documents\DOT\_Offices\Drawings\1\Projects\127120\CaddData\Design\127120-sh-lin-08.dgn

USER NAME = alshawa@kehy	DESIGNED -	REVISED -
	DRAWN -	REVISED -
PLOT SCALE = 100.0000' / in.	CHECKED -	REVISED -
PLOT DATE = 12/11/2019	DATE -	REVISED -

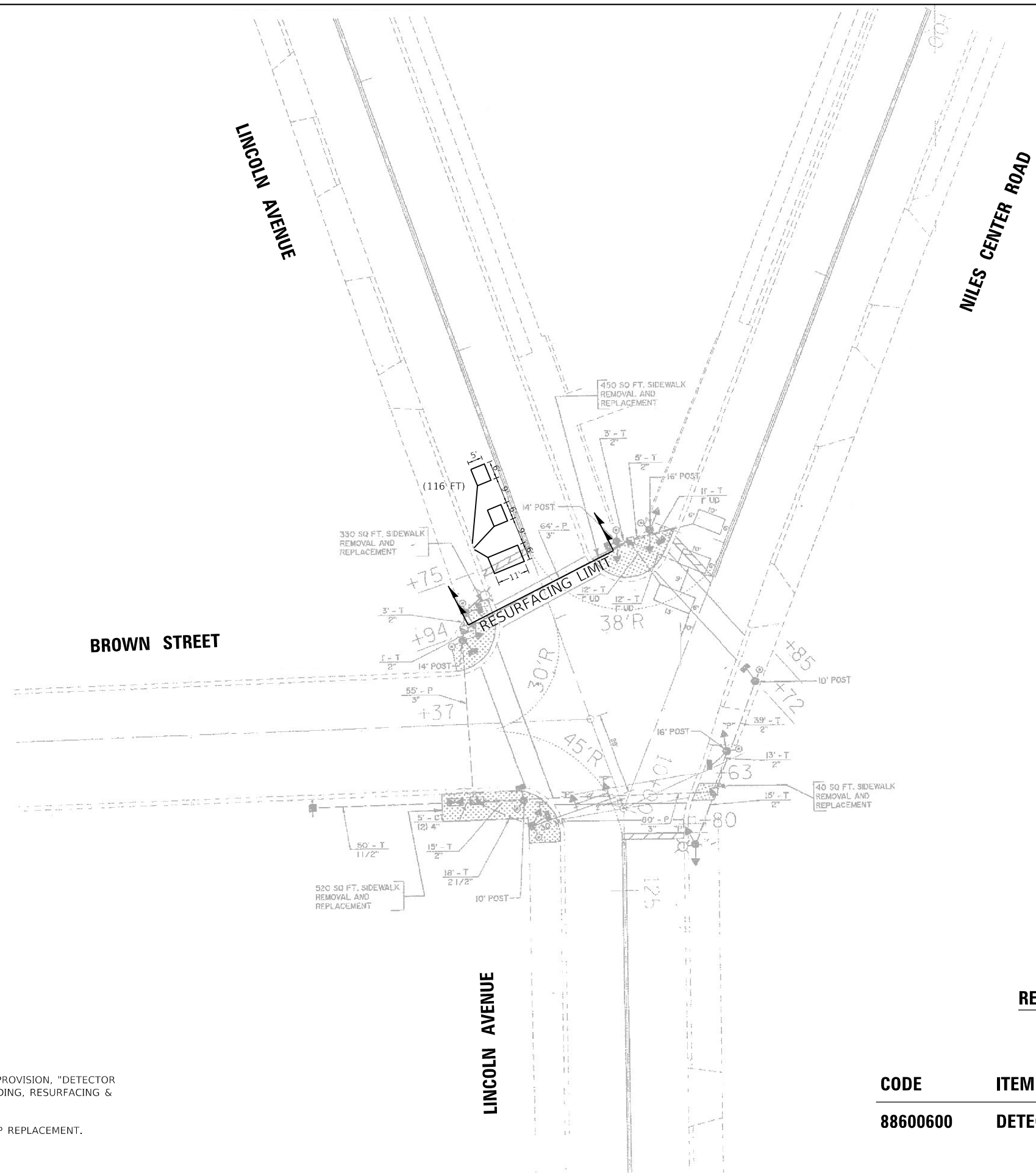
**STATE OF ILLINOIS  
DEPARTMENT OF TRANSPORTATION**

**ROADWAY AND PAVEMENT MARKING PLAN LINCOLN AVE.  
SOUTH OF MAIN ST. TO NILES CENTER RD**

SCALE: 1"=50'      SHEET      OF      SHEETS      STA.      TO      STA.

F.A.U. RTE.	SECTION	COUNTY	TOTAL SHEETS	SHEET NO.
1328	2019-089-R5&SW	COOK	28	8
CONTRACT NO. 62J97				
ILLINOIS FED. AID PROJECT				





**NOTES:**

1. WORK SHALL MEET THE REQUIREMENTS OF THE SPECIAL PROVISION, "DETECTOR LOOP REPLACEMENT AND/OR INSTALLATION (ROADWAY GRINDING, RESURFACING & PATCHING OPERATIONS).
2. THIS PLAN IS FOR THE SOLE PURPOSE OF DETECTOR LOOP REPLACEMENT.

**REPLACE ALL DETECTOR LOOPS AS SHOWN  
(WITHIN THE RESURFACING LIMITS)**

CODE	ITEM	QUANTITY	UNIT
88600600	DETECTOR LOOP REPLACEMENT	116	FOOT

MODEL: D:\dgn\11182019\11182019-002\11182019-002.dgn  
 FILE: Main.dwg  
 USER: kobykaka  
 DATE: 11/18/2019

USER NAME = kobykaka	DESIGNED - KK	REVISED -
DRAWN - KK	REVISIONS -	
PLOT SCALE = 40.0000 ' / in.	CHECKED - LP	REVISED -
PLOT DATE = 11/18/2019	DATE - 09/16/2019	REVISED -

**STATE OF ILLINOIS  
DEPARTMENT OF TRANSPORTATION**

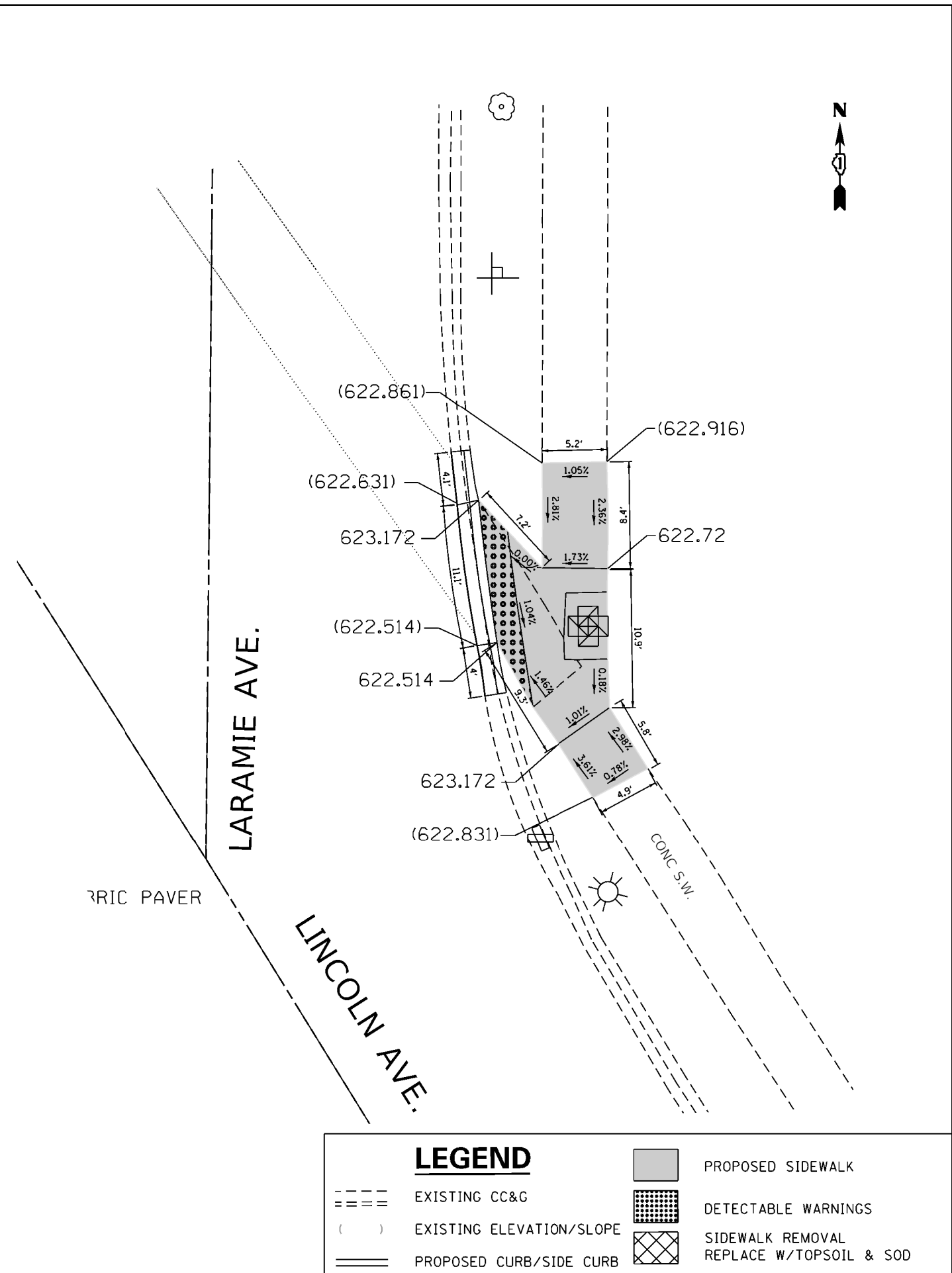
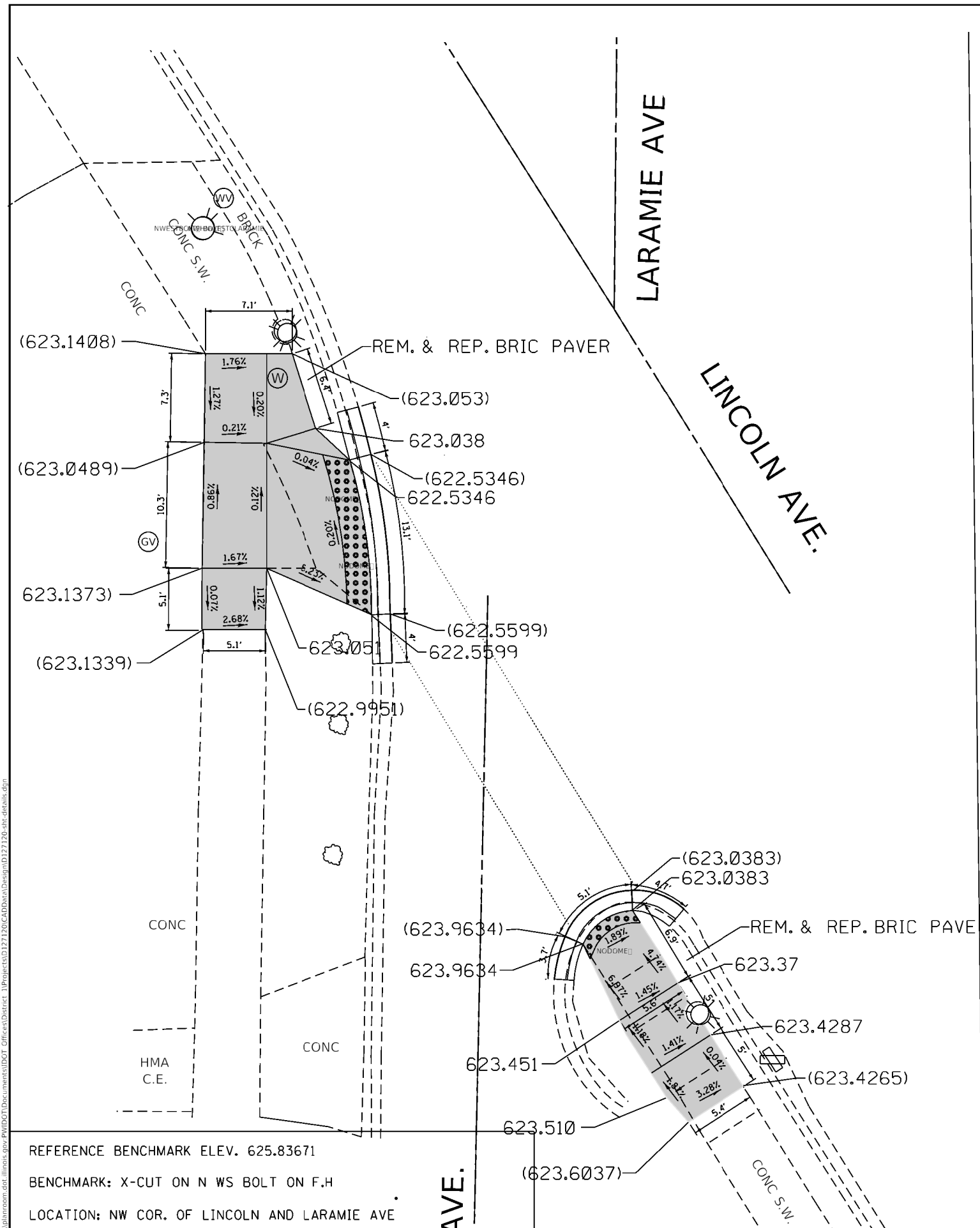
**DETECTOR LOOP REPLACEMENT PLAN  
LINCOLN AVE AT NILES CENTER RD AND BROWN ST**

SCALE: 1"=20'  
SHEET OF SHEETS STA. TO STA.

F.A.U. RTE.	SECTION	COUNTY	TOTAL SHEETS	SHEET NO.
1328	2019-089-R5&SW	COOK	28	9
CONTRACT NO. 62J97				
ILLINOIS FED. AID PROJECT				



MODEL: Default  
 FILE: \\miller\pub\share\arcgis\illinois\proj\p1\DOT\Documents\DOT\_Offices\District 1\Projects\623120\CADD\Drawings\623120\_sht\_details.dgn



REFERENCE BENCHMARK ELEV. 625.83671  
 BENCHMARK: X-CUT ON N WS BOLT ON F.H  
 LOCATION: NW COR. OF LINCOLN AND LARAMIE AVE

**LEGEND**

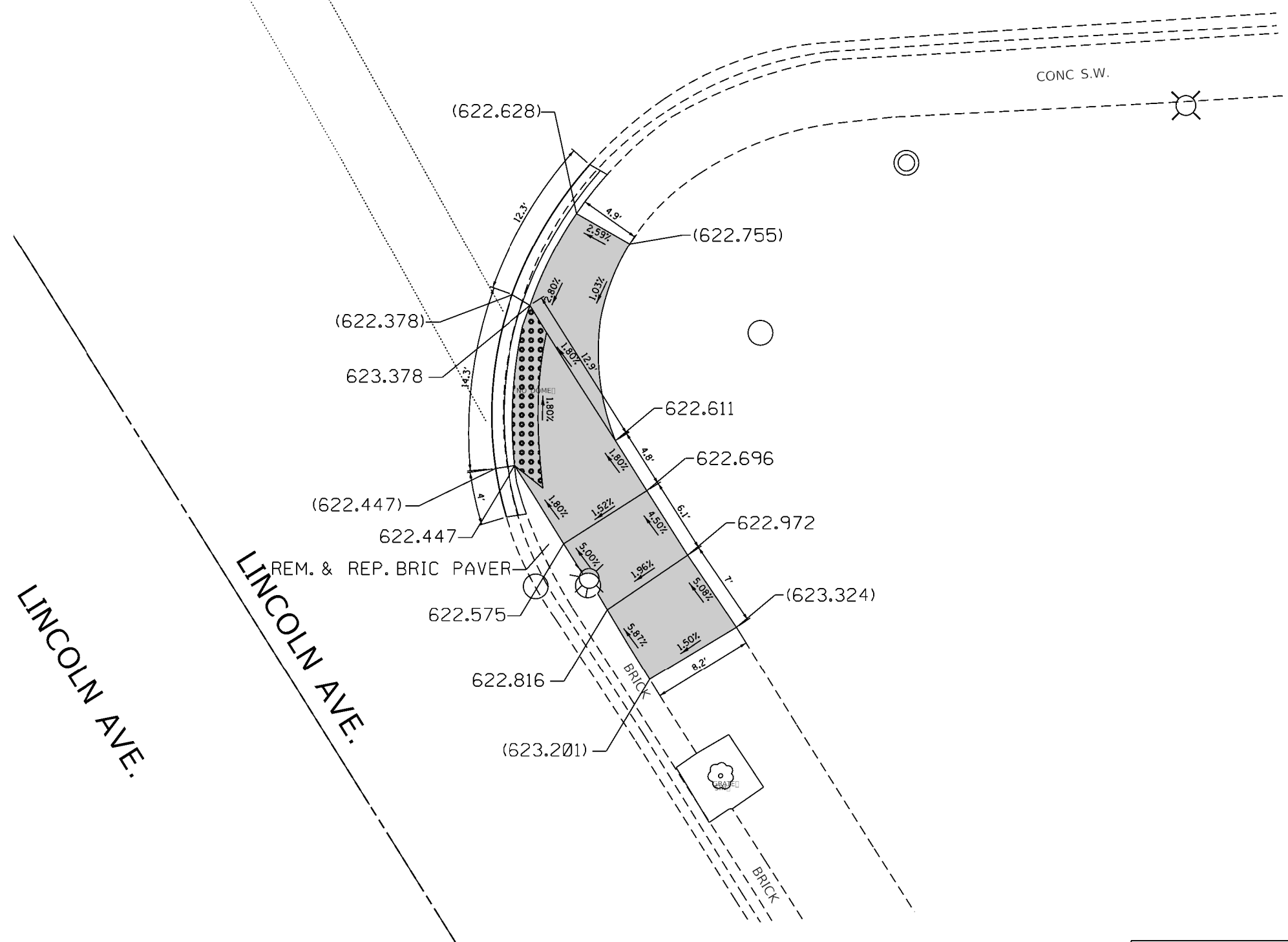
- EXISTING CC&G
- EXISTING ELEVATION/SLOPE
- PROPOSED CURB/SIDE CURB
- PROPOSED SIDEWALK
- DETECTABLE WARNINGS
- SIDEWALK REMOVAL REPLACE W/TOPSOIL & SD

USER NAME = alsnawabkhhym	DESIGNED -	REVISED -
DRAWN -	REVISOR -	REVISOR -
PLOT SCALE = 10.0000' / 1"	CHECKED -	REVISOR -
PLOT DATE = 12/11/2019	DATE -	REVISOR -

STATE OF ILLINOIS  
 DEPARTMENT OF TRANSPORTATION

<b>ADA RAMPS DETAILS</b>		F.A.U. RTE.	SECTION	COUNTY	TOTAL SHEETS	SHEET NO.
<b>LINCOLN AVE AT LARAMIE AVE</b>		1328	2019-089-R5&SW	COOK	28	11
SCALE: SHEET OF SHEETS STA. TO STA.		CONTRACT NO. 62J97				
		ILLINOIS FED. AID PROJECT				





LINCOLN AVE.

LINCOLN AVE.

REFERENCE BENCHMARK ELEV. 625.74377  
 BENCHMARK: X-CUT ON N WS BOLT ON F.H  
 LOCATION: NW COR. OF LINCOLN AND LARAMIE AVE

**LEGEND**

	EXISTING CC&G		PROPOSED SIDEWALK
	EXISTING ELEVATION/SLOPE		DETECTABLE WARNINGS
	PROPOSED CURB/SIDE CURB		SIDEWALK REMOVAL REPLACE W/TOPSOIL & SOD

MODEL: Default  
 FILE: Model - 2019-089-R56SW.dwg  
 PROJECT: 2019-089-R56SW  
 USER: alshawabkehym  
 DATE: 12/11/2019

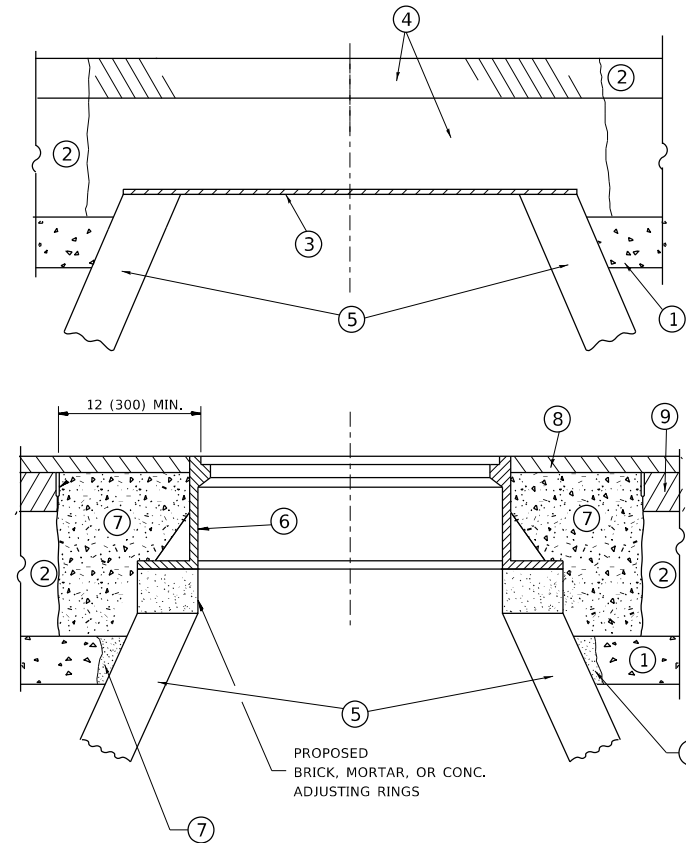
USER NAME = alshawabkehym	DESIGNED -	REVISD -
DRAWN -	DRAWN -	REVISD -
PLOT SCALE = 10.0000' / 1"	CHECKED -	REVISD -
PLOT DATE = 12/11/2019	DATE -	REVISD -

**STATE OF ILLINOIS  
 DEPARTMENT OF TRANSPORTATION**

**ADA RAMPS DETAILS  
 LINCOLN AVE AT MADISON ST**

SCALE:      SHEET      OF      SHEETS      STA.      TO      STA.

F.A.U. RTE.	SECTION	COUNTY	TOTAL SHEETS	SHEET NO.
1328	2019-089-R56SW	COOK	28	13
CONTRACT NO. 62197				
ILLINOIS FED. AID PROJECT				



**CONSTRUCTION PROCEDURES**

**STAGE 1 (BEFORE PAVEMENT MILLING)**

- A) REMOVE A MINIMUM OF 12 (300) OF THE PAVEMENT FROM AROUND THE STRUCTURE.
- B) REMOVE THE EXISTING FRAME AND LID FROM THE STRUCTURE.
- C) COVER THE STRUCTURE OPENING WITH A 36 (900) DIAMETER METAL PLATE.
- D) BACKFILL WITH CRUSHED STONE AND A MINIMUM 1½ (40) THICK HMA SURFACE MIX APPROVED BY THE ENGINEER.

**STAGE 2 (AFTER PAVEMENT MILLING)**

- A) REMOVE THE HMA SURFACE MIX AND CRUSHED STONE.
- B) INSTALL THE FRAME AND LID; ADJUST THE FRAME TO ITS FINAL SURFACE ELEVATION.
- C) THE SURROUNDING SPACE SHALL BE FILLED WITH CLASS PP-1 \* CONCRETE TO THE ELEVATION OF THE SURFACE OF THE EXISTING BASE COURSE OR THE BINDER COURSE.

\* UNLESS OTHERWISE SPECIFIED IN THE PLANS.

THE PROCEDURE EXPLAINED ABOVE SHALL CONFORM TO THE APPLICABLE PORTIONS OF SECTIONS 353, 406, 602, AND 603 OF THE STANDARD SPECIFICATIONS EXCEPT THAT \*THE CONTRACTOR SHALL ADJUST THE STRUCTURES TO THE FINISHED PAVEMENT ELEVATION NO MORE THAN 5 CALENDAR DAYS PRIOR TO PLACEMENT OF THE FINAL LIFT OF SURFACE UNLESS APPROVED BY THE ENGINEER."

**LEGEND**

- ① SUB-BASE GRANULAR MATERIAL
- ⑥ FRAME AND LID (SEE NOTES)
- ② EXISTING PAVEMENT
- ⑦ CLASS PP-1 \*CONCRETE
- ③ 36 (900) DIAMETER METAL PLATE
- ⑧ PROPOSED HMA SURFACE COURSE
- ④ PROPOSED CRUSHED STONE AND HMA SURFACE MIX
- ⑨ PROPOSED HMA BINDER COURSE
- ⑤ EXISTING STRUCTURE

**LOCATION OF STRUCTURES**

THE CONTRACTOR WILL BE REQUIRED TO KEEP A RECORD OF THE LOCATIONS OF THE BURIED STRUCTURES ACCORDING TO THE STATION AND DISTANCE LEFT OR RIGHT OF THE CENTERLINE OF PAVEMENT. UPON COMPLETION OF THE WORK, THE CONTRACTOR WILL DELIVER THE RECORD TO THE ENGINEER.

**BASIS OF PAYMENT**

REMOVING FRAMES AND LIDS ON DRAINAGE AND UTILITY STRUCTURES IN THE PAVEMENT PRIOR TO MILLING, AND ADJUSTING TO FINAL GRADE PRIOR TO PLACING THE SURFACE COURSE, WILL BE PAID FOR AT THE CONTRACT UNIT PRICE EACH FOR \*FRAMES AND LIDS TO BE ADJUSTED (SPECIAL).\*

THIS WORK WILL NOT BE PAID FOR WHEN DRAINAGE AND UTILITY STRUCTURES ARE SPECIFIED FOR PAYMENT AS STRUCTURE RECONSTRUCTION.

NEW FRAMES AND LIDS, WHEN SPECIFIED, WILL BE PAID FOR SEPARATELY.

**NOTES**

EXISTING BROKEN FRAMES AND LIDS SHALL BE REMOVED AND DISPOSED OF BY THE CONTRACTOR AND SHALL BE REPLACED AS DIRECTED BY THE ENGINEER. REPLACEMENT FRAMES AND LIDS WILL BE PAID FOR IN ACCORDANCE WITH ARTICLE 109.04 OF THE STANDARD SPECIFICATIONS UNLESS A SEPARATE PAY ITEM HAS BEEN PROVIDED.

IF THE EXISTING LIDS ARE OPEN, THE FRAME WILL BE ADJUSTED TO THE ELEVATION OF THE MILLED PAVEMENT SURFACE PRIOR TO THE MILLING OPERATION. THE FRAME WILL NOT BE REMOVED AND COVERED BY THE METAL PLATE.

CITY OF CHICAGO CASTINGS ARE THE PROPERTY OF THE CITY AND THE CONTRACTOR SHALL NOTIFY THE CITY FOR REMOVAL AND DISPOSITION OF THE CASTINGS.

THE METAL PLATE USED TO COVER THE STRUCTURE SHALL REMAIN THE PROPERTY OF THE CONTRACTOR.

WHEN STRUCTURES ARE TO BE ADJUSTED OR RECONSTRUCTED, THE LOWERING AND RAISING OF THE FRAMES AND LIDS WILL NOT BE PAID FOR SEPARATELY BUT WILL BE INCLUDED IN THE COST OF THE CORRESPONDING PAY ITEM.

**DETAILS FOR FRAMES AND LIDS ADJUSTMENT WITH MILLING**

ALL DIMENSIONS ARE IN INCHES (MILLIMETERS) UNLESS OTHERWISE SHOWN

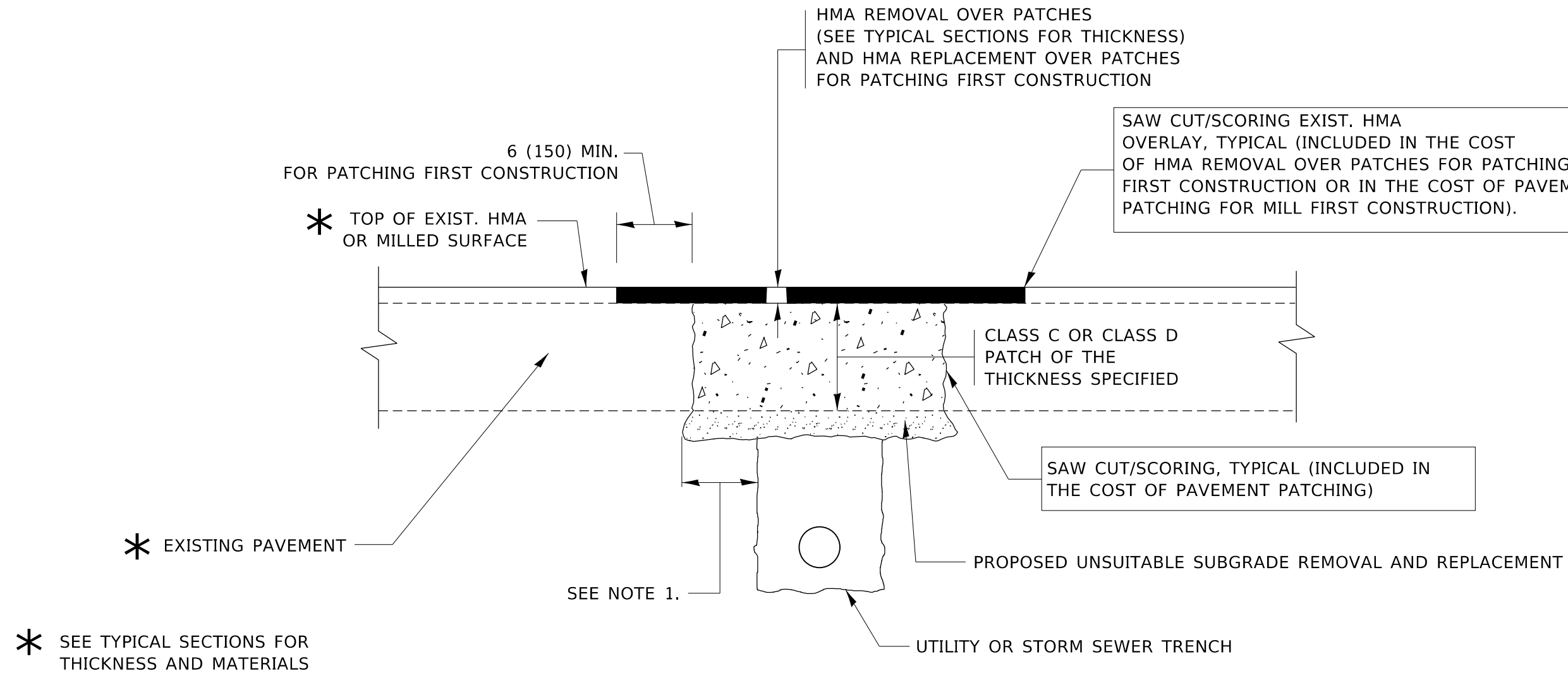
STATE OF ILLINOIS  
DEPARTMENT OF TRANSPORTATION

DETAILS FOR  
FRAMES AND LIDS ADJUSTMENT WITH MILLING

SCALE: NONE SHEET 1 OF 1 SHEETS STA. TO STA.

F.A.U. RTE.	SECTION	COUNTY	TOTAL SHEETS	SHEET NO.
1328	2019-089-RS&SW	COOK	28	14
BD600-03 (BD-8)		CONTRACT NO. 62J97		
ILLINOIS		FED. AID PROJECT		

USER NAME = alshawa@kehy	DESIGNED - R. SHAH	REVISED - R. WEDEMAN 05-14-04
	DRAWN -	REVISED - R. BORO 01-01-07
PLOT SCALE = 100,0000' / in.	CHECKED -	REVISED - R. BORO 03-09-11
PLOT DATE = 12/11/2019	DATE - 10-25-94	REVISED - R. BORO 12-06-11



**NOTES:**

1. THE WIDTH OF THE FULL DEPTH PATCH OVER A TRENCH SHALL BE 12 (300) WIDER ON EACH SIDE OF THE TRENCH.
2. FOR METHOD OF MEASUREMENT AND BASIS OF PAYMENT, SEE RECURRING SPECIAL PROVISION "PATCHING WITH HOT-MIX ASPHALT OVERLAY REMOVAL".

**SEQUENCE OF CONSTRUCTION (PATCHING FIRST)**

1. REMOVE THE EXISTING HMA MATERIAL OVER THE AREA TO BE PATCHED.
2. REMOVE AND REPLACE WITH CLASS C OR D PATCH.
3. REPLACE HMA MATERIAL OVER THE AREA TO BE PATCHED.

**SEQUENCE OF CONSTRUCTION (MILLING FIRST)**

1. MILL HMA FIRST IF THERE IS AT LEAST 4½ INCHES OR MORE OF HMA MATERIAL ON TOP OF THE EXISTING PAVEMENT OR IF THE PAVEMENT IS FULL DEPTH HMA. A MINIMUM OF 2 INCHES OF HMA MATERIAL SHALL BE IN PLACE AFTER MILLING.
2. REMOVE AND REPLACE WITH FULL DEPTH CLASS D PATCHES TO TOP OF MILLED SURFACE.

ALL DIMENSIONS ARE IN INCHES (MILLIMETERS) UNLESS OTHERWISE SHOWN.

MODEL: Default  
FILE: hma1328\_pav\_patchroom.dwg  
PROJECT: I:\Projects\127120\CADD\Design\Design\1328.dwg

USER NAME = alshawa@kehy	DESIGNED - R. SHAH	REVISED - A. ABBAS 04-27-98
	DRAWN -	REVISED - R. BORO 01-01-07
PLOT SCALE = 100.0000' / in.	CHECKED -	REVISED - R. BORO 09-04-07
PLOT DATE = 12/11/2019	DATE - 10-25-94	REVISED - K. ENG 10-27-08

STATE OF ILLINOIS  
DEPARTMENT OF TRANSPORTATION

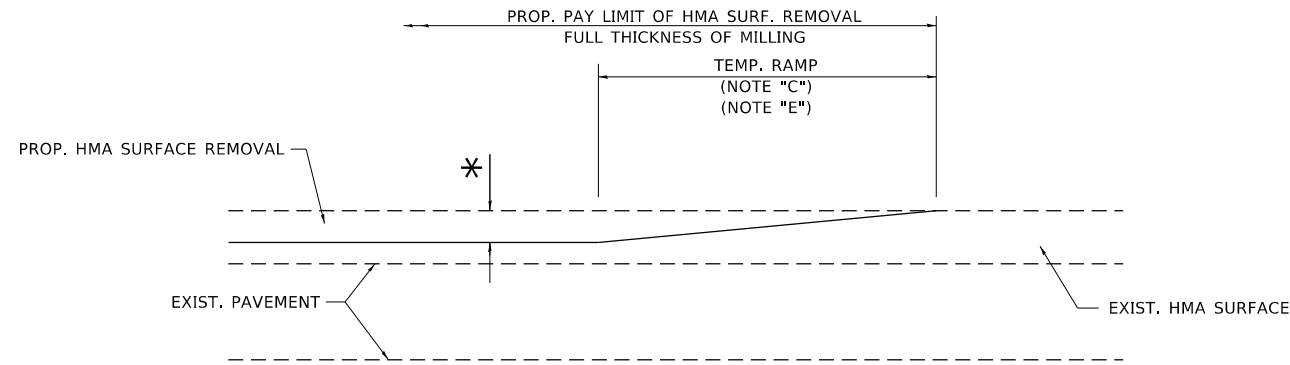
PAVEMENT PATCHING FOR  
HMA SURFACED PAVEMENT

SCALE: NONE SHEET 1 OF 1 SHEETS STA. TO STA.

F.A.U. RTE.	SECTION	COUNTY	TOTAL SHEETS	SHEET NO.
1328	2019-089-RS&SW	COOK	28	15
BD400-04 (BD-22)			CONTRACT NO. 62J97	
ILLINOIS FED. AID PROJECT				



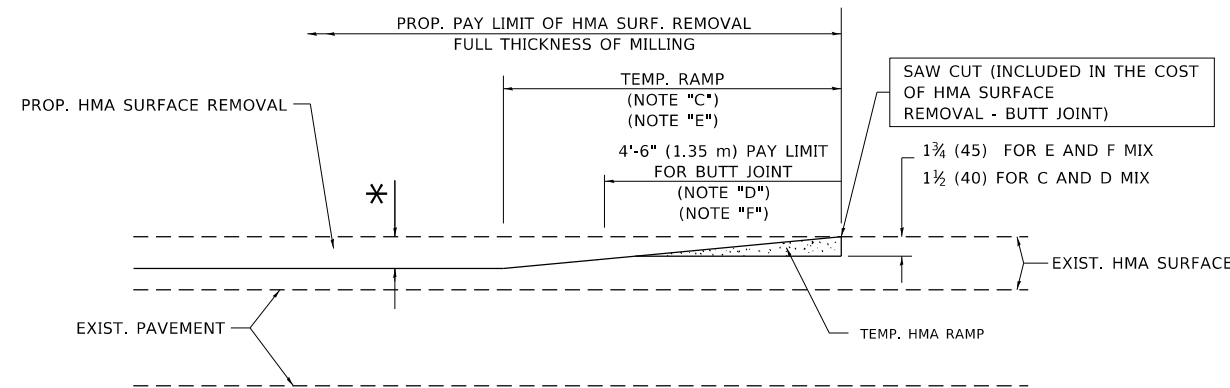




**MILLED TEMPORARY RAMP**

(FOR BUTT JOINT AND HMA TAPER SEE DETAIL BELOW)

**OPTION 1**

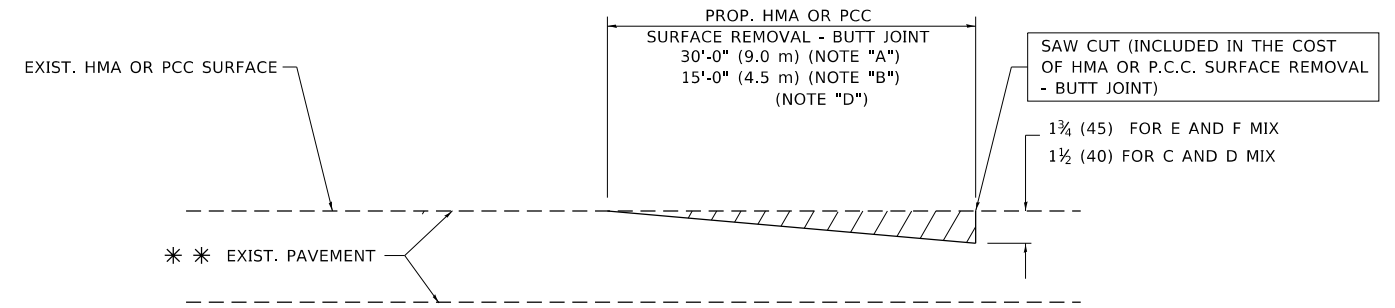


**HMA CONSTRUCTED TEMPORARY RAMP**

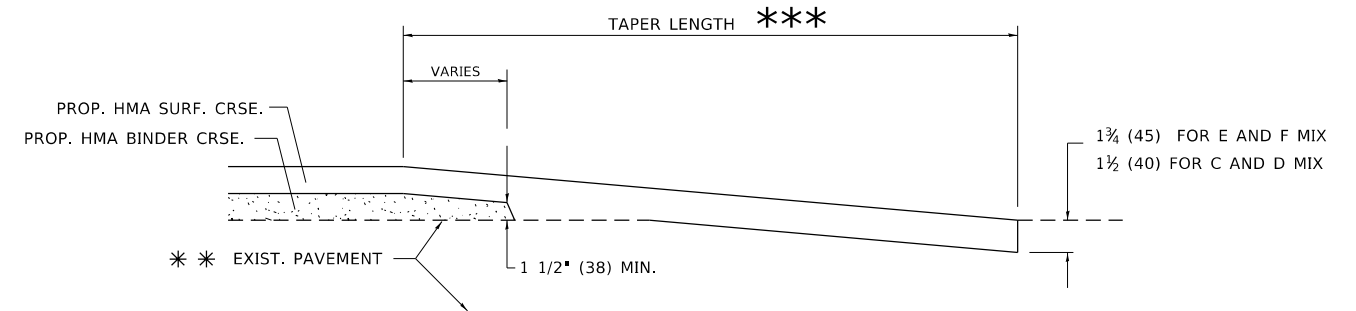
(FOR BUTT JOINT AND HMA TAPER SEE DETAIL BELOW)

**OPTION 2**

**TYPICAL TEMPORARY RAMP**



**BUTT JOINT DETAIL**



**HMA TAPER DETAIL**

**TYPICAL BUTT JOINT AND HMA TAPER FOR RESURFACING ONLY**

\*\*\* PC CONCRETE, HMA OR HMA RESURFACED PAVEMENT.

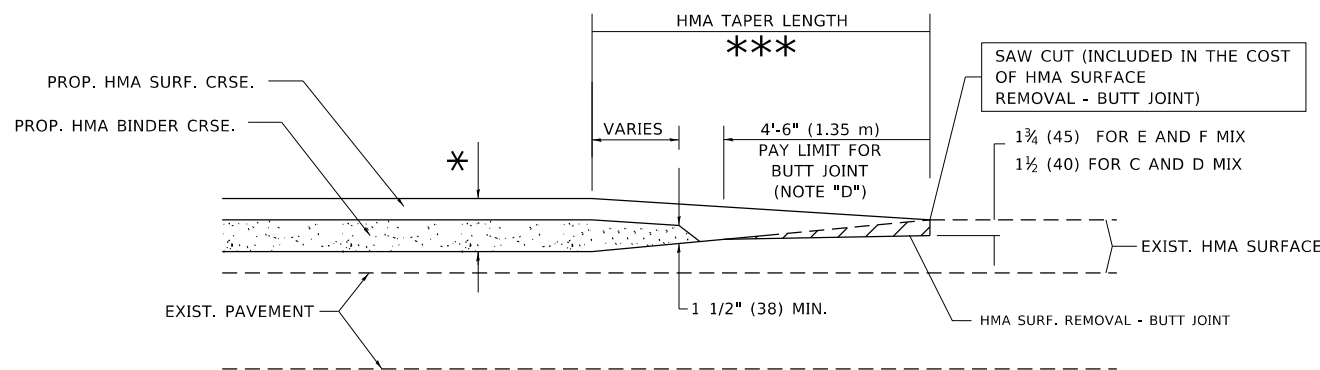
**NOTES**

- A. MAINLINE ROADWAYS AND MAJOR SIDE ROADS.
- B. MINOR SIDE ROADS.
- C. THE TEMP. RAMP SHALL BE CONSTRUCTED IMMEDIATELY UPON REMOVAL OF THE EXISTING HMA SURFACE.
- D. THE BUTT JOINT SHALL BE CONSTRUCTED IMMEDIATELY PRIOR TO PLACING THE PROPOSED HMA COURSES.
- E. TAPER THE TEMP. RAMP AT A RATE OF 3'-0" (900 mm) PER 1 INCH (25 mm) OF MILLING THICKNESS.
- F. INSTALLATION AND REMOVAL OF THE 4'-6" (1.35 m) TEMP. RAMP IS INCLUDED IN COST OF HMA SURFACE REMOVAL - BUTT JOINT.  
\* SEE TYPICAL SECTIONS FOR MILLING THICKNESS.
- G. SEE ARTICLE 406.08 AND 406.14 OF THE STANDARD SPECIFICATIONS FOR "HMA AND/OR PCC SURFACE REMOVAL, BUTT JOINT".  
\*\*\* 20'-0" (6.1 m) PER 1 (25) RESURFACING (NOTE "A")  
10'-0" (3.0 m) PER 1 (25) RESURFACING (NOTE "B")

**BASIS OF PAYMENT**

THE BUTT JOINT WILL BE PAID FOR AT THE CONTRACT UNIT PRICE PER SQUARE YARD (SQUARE METER) FOR "HOT-MIX ASPHALT SURFACE REMOVAL - BUTT JOINT" OR FOR "PORTLAND CEMENT CONCRETE SURFACE REMOVAL - BUTT JOINT".

ALL DIMENSIONS ARE IN INCHES (MILLIMETERS) UNLESS OTHERWISE SHOWN.



**BUTT JOINT AND HMA TAPER**

**TYPICAL BUTT JOINT AND HMA TAPER FOR MILLING AND RESURFACING**

MODEL: Default  
FILE: \\hpc\p\pub\hpc\room\dat\illinois\pcc\p\WIDOT\Documents\DOT\_Offices\Bldgctc\_1\Projects\127120\Cadd\Bldg\Design\Bldg\Bldg.dgn

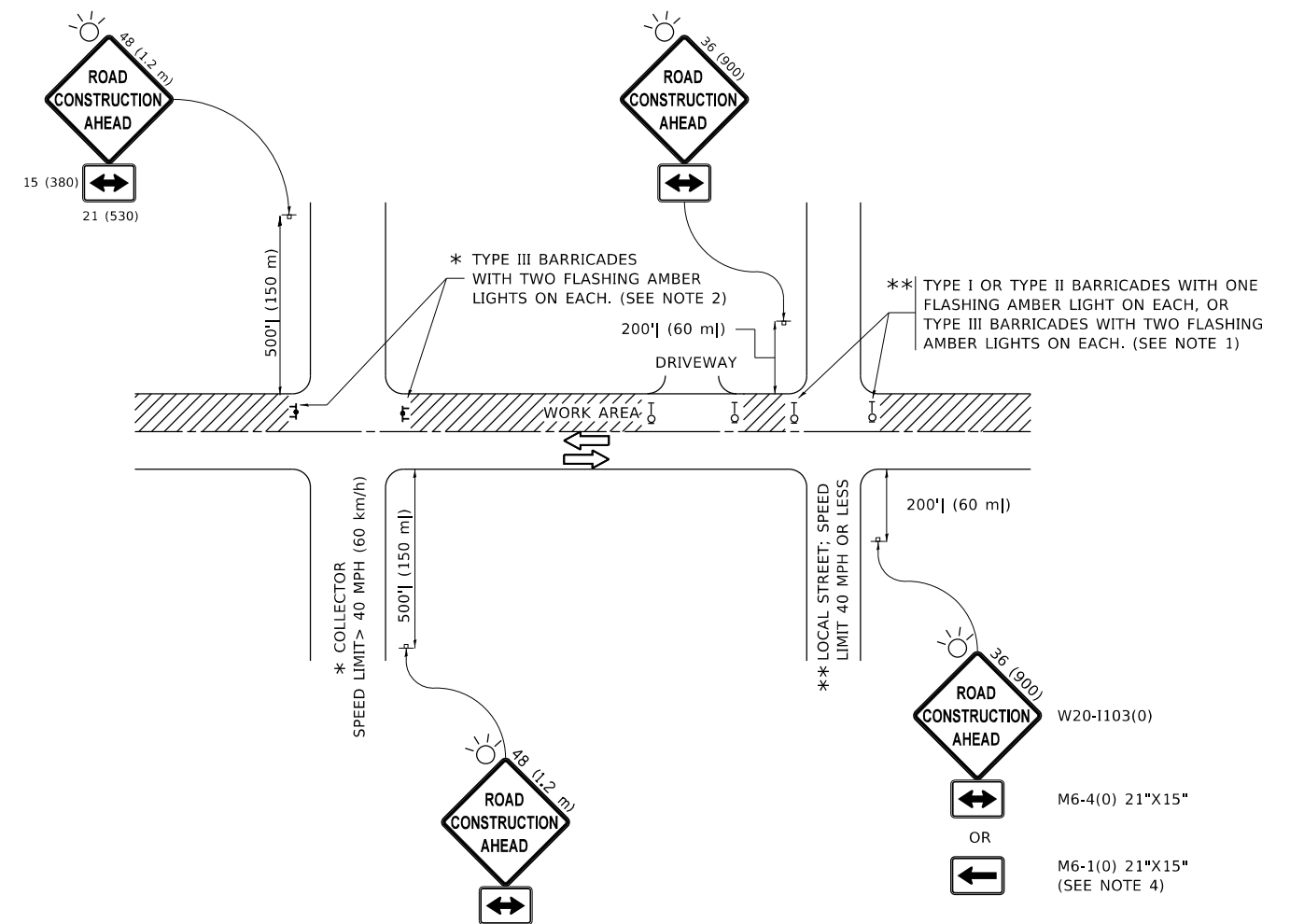
USER NAME = alshawa@kehyim	DESIGNED - M. DE YONG	REVISED - R. SHAH 10-25-94
	DRAWN -	REVISED - A. ABBAS 03-21-97
PLOT SCALE = 100.0000' / in.	CHECKED -	REVISED - M. GOMEZ 04-06-01
PLOT DATE = 12/11/2019	DATE - 06-13-90	REVISED - R.BORO 01-01-07

STATE OF ILLINOIS  
DEPARTMENT OF TRANSPORTATION

BUTT JOINT AND  
HMA TAPER DETAILS

SCALE: NONE SHEET 1 OF 1 SHEETS STA. TO STA.

F.A.U. RTE.	SECTION	COUNTY	TOTAL SHEETS	SHEET NO.
1328	2019-089-RS&SW	COOK	28	17
BD400-05 BD32		CONTRACT NO. 62J97		
ILLINOIS FED. AID PROJECT				



**NOTES:**

- SIDE ROAD WITH A SPEED LIMIT OF 40 MPH (60 km/h) OR LESS AS SHOWN ON THE DRAWING AND AS DIRECTED BY THE ENGINEER:
  - ONE "ROAD CONSTRUCTION AHEAD" SIGN 36 x 36 (900x900) WITH A FLASHER MOUNTED ON IT APPROXIMATELY 200' (60 m) IN ADVANCE OF THE MAIN ROUTE.
  - THE CLOSED PORTION OF THE MAIN ROUTE SHALL BE PROTECTED BY BLOCKING WITH TYPE I, TYPE II OR TYPE III BARRICADES, 1/3 OF THE CROSS SECTION OF THE CLOSED PORTION.
- SIDE ROAD WITH A SPEED LIMIT GREATER THAN 40 MPH (60 km/h) AS SHOWN ON THE DRAWING AND AS DIRECTED BY THE ENGINEER:
  - ONE "ROAD CONSTRUCTION AHEAD" SIGN 48 x 48 (1.2 m x 1.2 m) WITH A FLASHER MOUNTED ON IT APPROXIMATELY 500' (150 m) IN ADVANCE OF THE MAIN ROUTE.
  - THE CLOSED PORTION OF THE MAIN ROUTE SHALL BE PROTECTED BY BLOCKING WITH TYPE III BARRICADES, 1/2 OF THE CROSS SECTION OF THE CLOSED PORTION.
- CONES MAY BE SUBSTITUTED FOR BARRICADES OR DRUMS AT HALF THE SPACING DURING DAY OPERATIONS. CONES SHALL BE A MINIMUM OF 28 (710) IN HEIGHT.
- SIGNING AND THE WORK ZONE, A SINGLE HEADED ARROW (M6-1) SHALL BE USED IN LIEU OF THE DOUBLE HEADED ARROW (M6-4).
- WHEN WORK IS BEING PERFORMED ON A SIDE ROAD OR DRIVEWAY, FOLLOW THE APPLICABLE STANDARD(S). THE DIRECTIONAL ARROW (M6-1 OR M6-4) SHALL BE COVERED OR REMOVED WHEN NO LONGER CONSISTENT WITH THE TRAFFIC CONTROL SET-UP.
- ADVANCE WARNING SIGNS ARE TO BE OMITTED ON DRIVEWAYS UNLESS OTHERWISE SPECIFIED IN THE PLANS OR BY THE ENGINEER.
- THE TRAFFIC CONTROL AND PROTECTION FOR SIDE ROADS, INTERSECTIONS, AND DRIVEWAYS SHALL BE INCLUDED IN THE COST OF SPECIFIED TRAFFIC CONTROL STANDARDS OR ITEMS.

All dimensions are in inches (millimeters) unless otherwise shown.

MODEL: Default  
FILE: h:\m\c\_p\pub\haronom.d\at\illinois.gov\PWIDOT\Documents\DOT\_Offices\Director\_1\Projects\127120\CADD\Drawings\Design\DESIGN.dgn

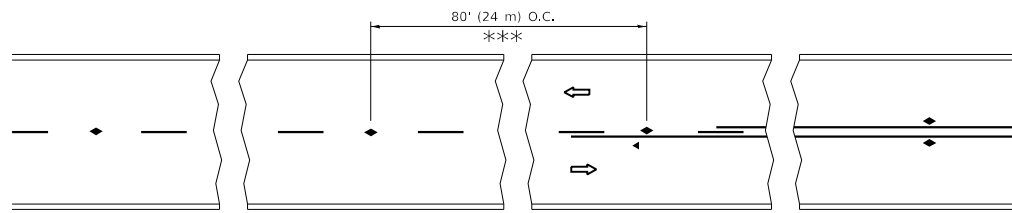
USER NAME = alshawabkehym	DESIGNED - L.H.A.	REVISED - A. HOUSEH 10-15-96
PLOT SCALE = 100.0000' / in.	CHECKED -	REVISED - T. RAMMACHER 01-06-00
PLOT DATE = 12/11/2019	DATE - 06-89	REVISED - A. SCHUETZE 07-01-13
		REVISED - A. SCHUETZE 09-15-16

**STATE OF ILLINOIS  
DEPARTMENT OF TRANSPORTATION**

**TRAFFIC CONTROL AND PROTECTION FOR  
SIDE ROADS, INTERSECTIONS, AND DRIVEWAYS**

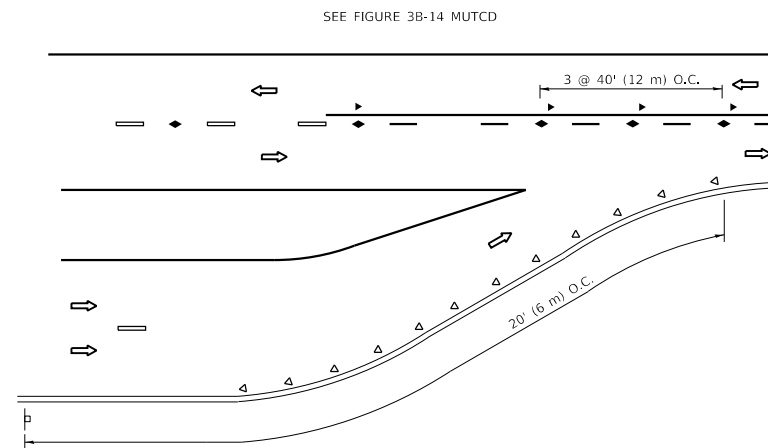
SCALE: NONE SHEET 1 OF 1 SHEETS STA. TO STA.

F.A.U. RTE.	SECTION	COUNTY	TOTAL SHEETS	SHEET NO.
1328	2019-089-RS&SW	COOK	28	18
<b>TC-10</b>			CONTRACT NO. <b>62J97</b>	
ILLINOIS FED. AID PROJECT				

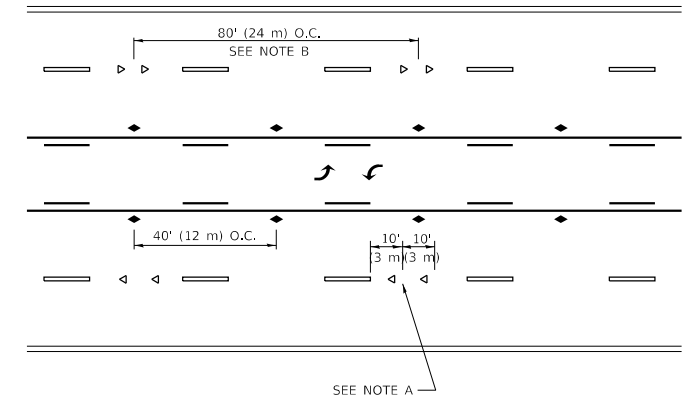


\*\*\* REDUCE TO 40' (12 m) O.C. ON CURVES WITH POSTED OR ADVISORY SPEED 45 M.P.H. (70 km/h) OR LESS.

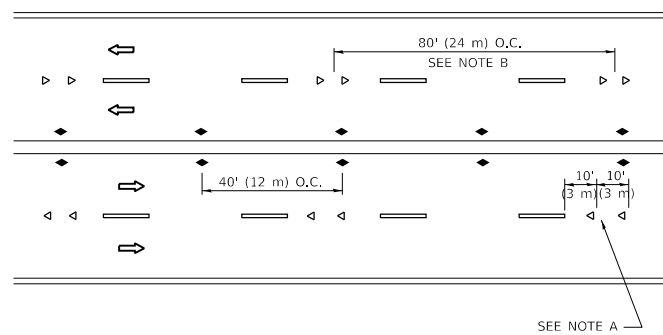
**TWO-LANE/TWO-WAY**



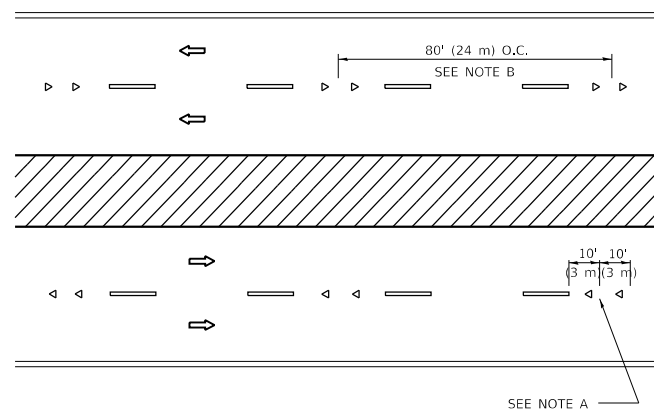
**LANE REDUCTION TRANSITION**



**TWO-WAY LEFT TURN**



**MULTI-LANE/UNDIVIDED**



**MULTI-LANE/DIVIDED**

**GENERAL NOTES**

1. MARKERS USED WITH DASHED LINES SHALL BE CENTERED IN THE GAP BETWEEN SEGMENTS.
2. MARKERS USED ADJACENT TO SOLID LINES SHALL BE OFFSET 2 TO 3 (50 TO 75) TOWARD TRAFFIC AS SHOWN.
3. MARKERS THROUGH TANGENTS LESS THAN 500' (150 m) IN LENGTH BETWEEN CURVES SHALL BE INSTALLED AT THE LESSER OF THE TWO CURVE SPACINGS.
4. MARKERS ARE TO BE USED ADJACENT TO BOTH SOLID WHITE LINES IN DUAL LEFT TURN LANES

**SYMBOLS**

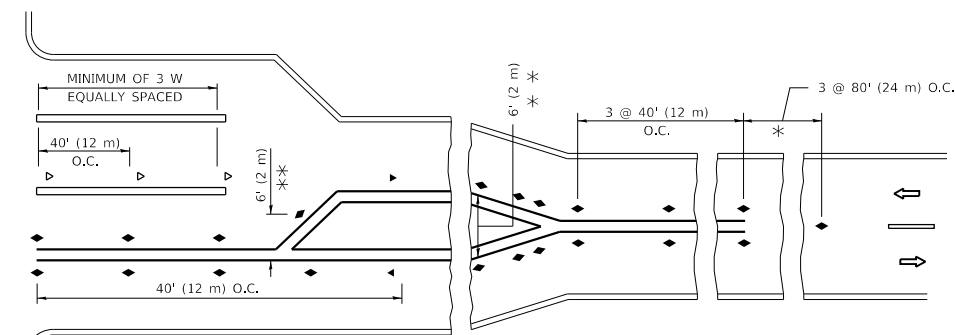
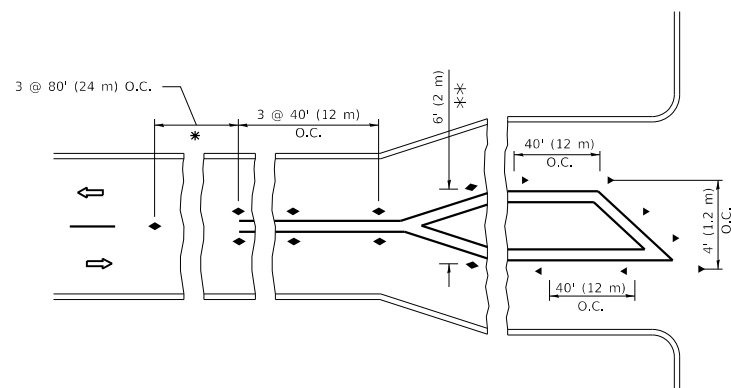
- YELLOW STRIPE
- WHITE STRIPE
- ◀ ONE-WAY AMBER MARKER
- ◀ ONE-WAY CRYSTAL MARKER (W/O)
- ◆ TWO-WAY AMBER MARKER

**LANE MARKER NOTES**

- A. USE DOUBLE LANE LINE MARKERS SPACED AS SHOWN.
- B. REDUCE TO 40' (12 m) O.C. ON CURVES WHERE ADVISORY SPEEDS ARE 10 M.P.H. (20 km/h) LOWER THAN POSTED SPEEDS.

**DESIGN NOTES**

1. DOUBLE LANE LINE MARKERS SHALL BE USED UNLESS SPECIFIED OTHERWISE.
2. EXCEPT AS SHOWN ON THE LANE REDUCTION TRANSITION AND FREEWAY EXIT RAMP DETAIL, MARKERS ARE NOT TO BE SPECIFIED ON RIGHT EDGE LINES.
3. THE EXACT MARKER LIMITS, SPACING, AND COLOR SHALL BE INCLUDED IN THE PLANS WHEN STANDARD SPECIFICATIONS ARE NOT BEING USED.
4. MARKERS SHOULD NOT BE USED ALONGSIDE CURBS EXCEPT FOR EXTREMELY SHORT SECTIONS OF CURBS WHERE NOT MORE THAN TWO MARKERS WOULD BE INVOLVED.



\* SEE TWO-LANE/TWO-WAY WHERE MARKERS CONTINUE  
 \*\* WHERE THE MEDIAN WIDTH IS 6' (2 m) OR LESS USE TWO-WAY MARKERS.

**TURN LANES**

All dimensions are in inches (millimeters) unless otherwise shown.

MODEL: Default  
 FILE: \\bls01\pub\blsroom\dat\illinois\pww\DOT\Documents\DOT\_Offices\bls\bls\1\Projects\127120\CADD\bls\Design\bls\bls.dgn

USER NAME = alshawa@kehym	DESIGNED -	REVISED - T. RAMMACHER 03-12-99
	DRAWN -	REVISED - T. RAMMACHER 01-06-00
PLOT SCALE = 100.0000' / in.	CHECKED -	REVISED - C. JUCIUS 09-09-09
PLOT DATE = 12/11/2019	DATE -	REVISED - C. JUCIUS 07-01-13

**STATE OF ILLINOIS  
 DEPARTMENT OF TRANSPORTATION**

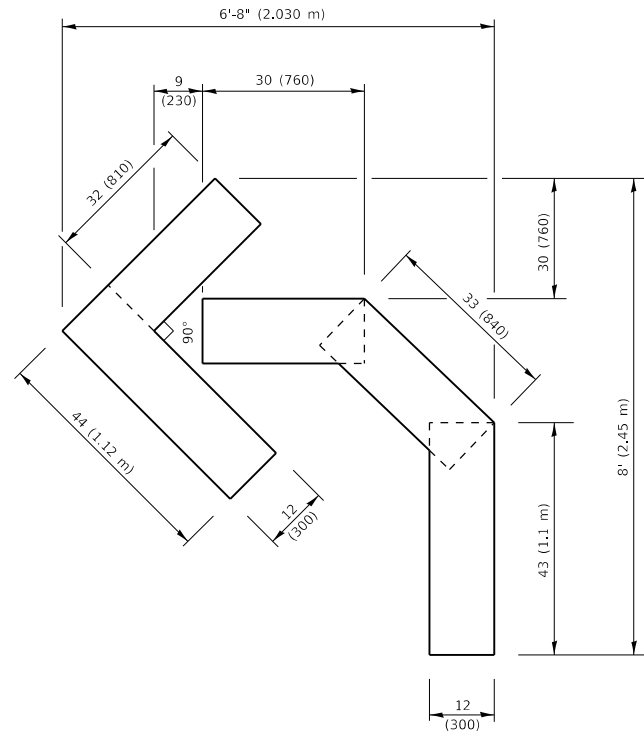
**TYPICAL APPLICATIONS  
 RAISED REFLECTIVE PAVEMENT MARKERS (SNOW-PLOW RESISTANT)**

SCALE: NONE SHEET 1 OF 1 SHEETS STA. TO STA.

F.A.U. RTE.	SECTION	COUNTY	TOTAL SHEETS	SHEET NO.
1328	2019-089-RS&SW	COOK	28	19
TC-11			CONTRACT NO. 62J97	
ILLINOIS		FED. AID PROJECT		

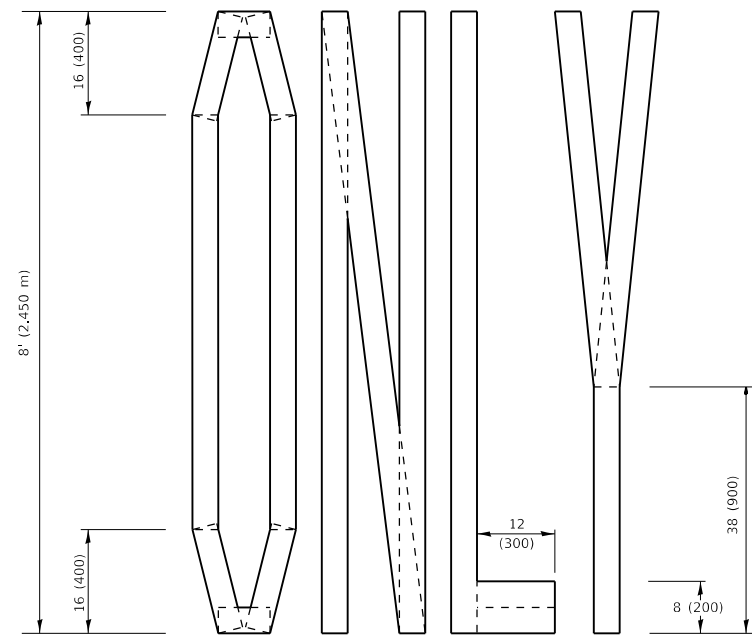
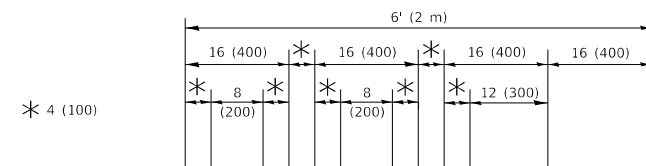






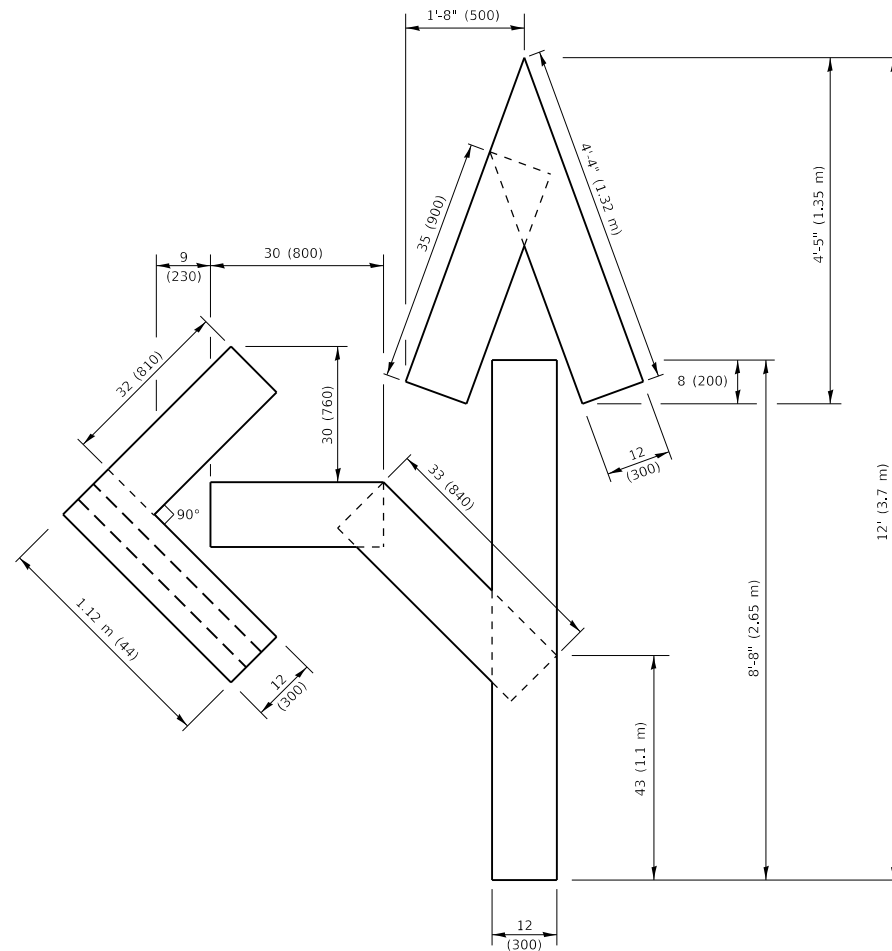
**QUANTITY**

4 (100) LINE = 45.5 ft. (13.9 m)  
15.2 sq. ft. (1.41 sq. m)



**QUANTITY**

4 (100) LINE = 64.1 ft. (19.5 m)  
21.4 sq. ft. (1.99 sq. m)

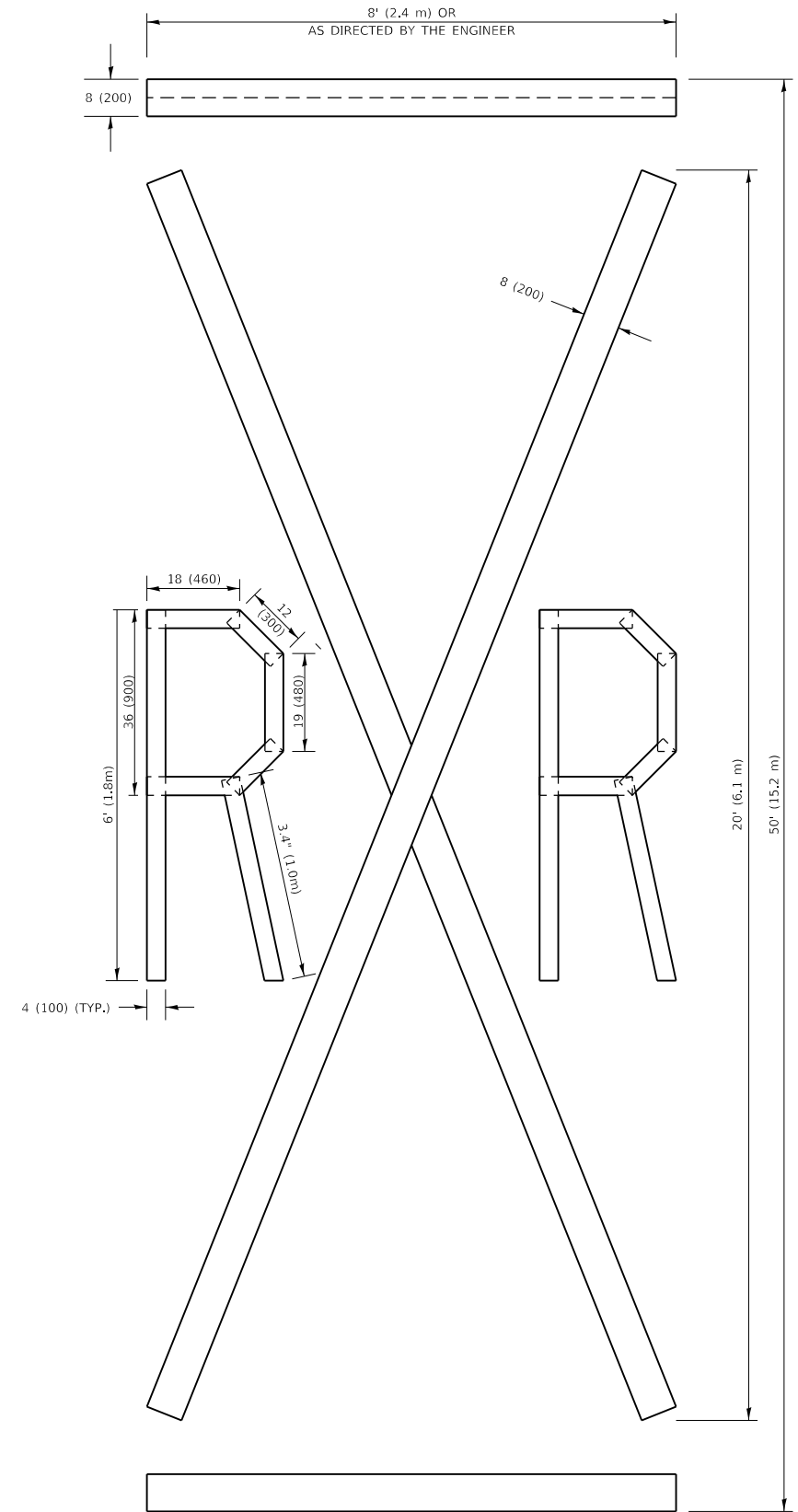


**QUANTITY**

4 (100) LINE = 82.5 ft. (25.1 m)  
27.5 sq. ft. (2.53 sq. m)

**NOTE:**

ALL QUANTITIES OF PLACEMENT ARE REPRESENTED IN LINEAR FEET OF 4" LINES TO MATCH THE 4" TEMPORARY TAPE PAY ITEM AND REPRESENTS THE TOTAL QUANTITY OF 4" TAPE REQUIRED.



**QUANTITY**

4 (100) LINE = 225.9 ft. (68.9 m)  
75.3 sq. ft. (6.99 sq. m)

All dimensions are in inches (millimeters) unless otherwise shown.

MODEL: Default  
FILE NAME: P:\pghbar.com.dwg  
PROJECT: 127120\CAD\data\Design\BIS\Std.dwg

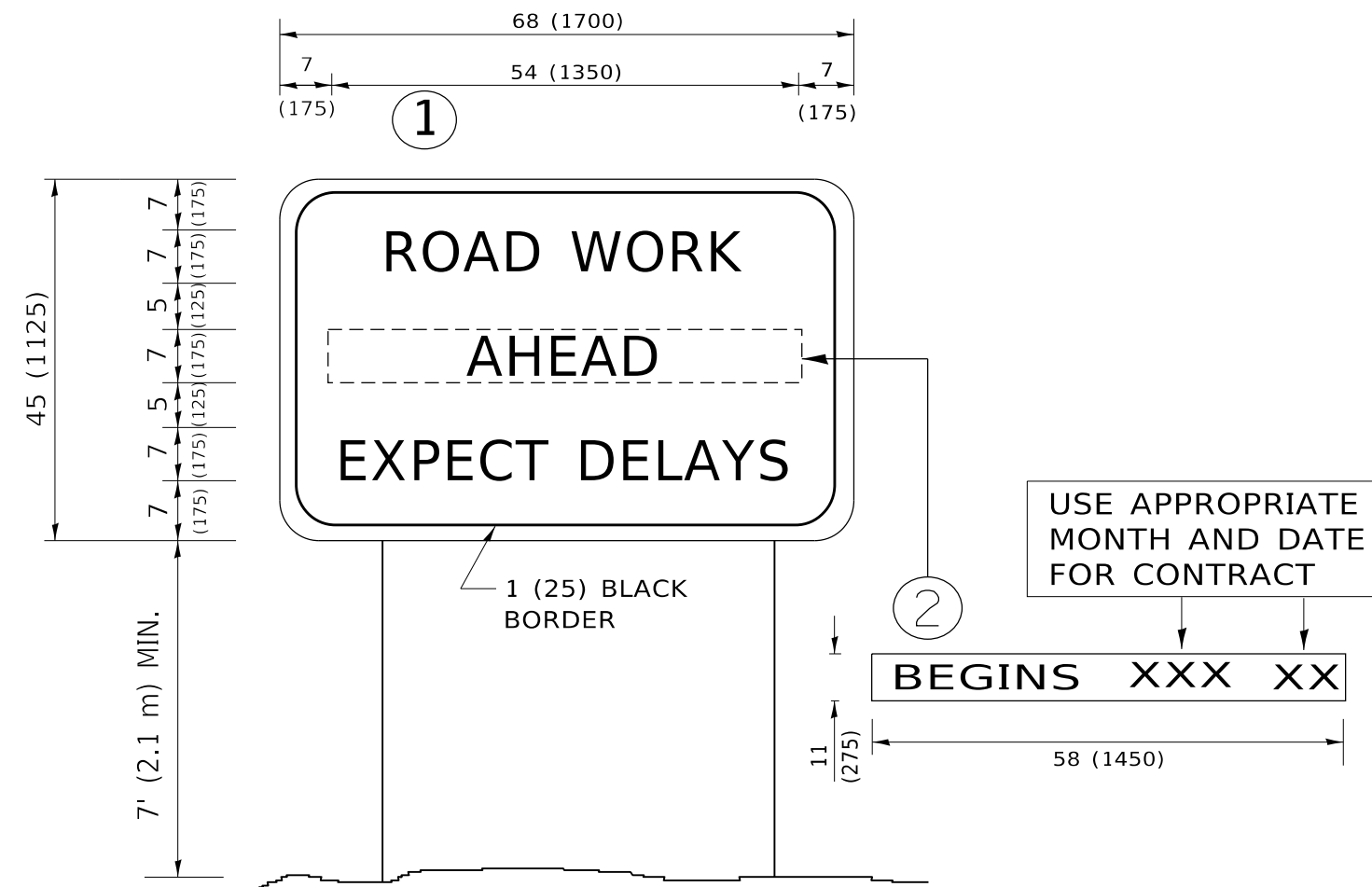
USER NAME = alshawabkehym	DESIGNED -	REVISED - T. RAMMACHER 03-02-98
PLOT SCALE = 100,0010' / In.	DRAWN -	REVISED - E. GOMEZ 08-28-00
PLOT DATE = 12/11/2019	CHECKED -	REVISED - E. GOMEZ 08-28-00
	DATE - 09-18-94	REVISED - A. SCHUETZE 09-15-16

**STATE OF ILLINOIS  
DEPARTMENT OF TRANSPORTATION**

**SHORT TERM PAVEMENT MARKING LETTERS AND SYMBOLS**

SCALE: NONE SHEET 1 OF 1 SHEETS STA. TO STA.

F.A.U. RTE.	SECTION	COUNTY	TOTAL SHEETS	SHEET NO.
1328	2019-089-RS&SW	COOK	28	22
<b>TC-16</b>		CONTRACT NO. <b>62J97</b>		
ILLINOIS FED. AID PROJECT				



**NOTES:**

1. USE BLACK LETTERING ON ORANGE BACKGROUND.
2. ERECT SIGNS IN ADVANCE OF THE LOCATION FOR THE "ROAD CONSTRUCTION AHEAD" SIGN AT LOCATIONS AS DIRECTED BY THE ENGINEER.
3. ERECT SIGN ① WITH INSTALLED PANEL ② ONE WEEK PRIOR TO THE START OF CONSTRUCTION.
4. REMOVE PANEL ② SOON AFTER THE START OF CONSTRUCTION.
5. SEE SPECIAL PROVISION FOR "TEMPORARY INFORMATION SIGNING" FOR ADDITIONAL INFORMATION.
6. ONE SIGN ASSEMBLY EQUALS 25.70 SQ. FT. (2.3 SQ. M.)
7. SHALL BE PAID FOR AS TEMPORARY INFORMATION SIGNING.

ALL DIMENSIONS ARE IN INCHES (MILLIMETERS) UNLESS OTHERWISE SHOWN.

MODEL: Default  
 FILE: \\nas101.pw.state.il.us\pub\haronom.d\at\illinois.gov\PWIDOT\Documents\DOT\_Offices\Director\_1\Projects\127120\CADD\Drawings\Design\DRS\4.dgn

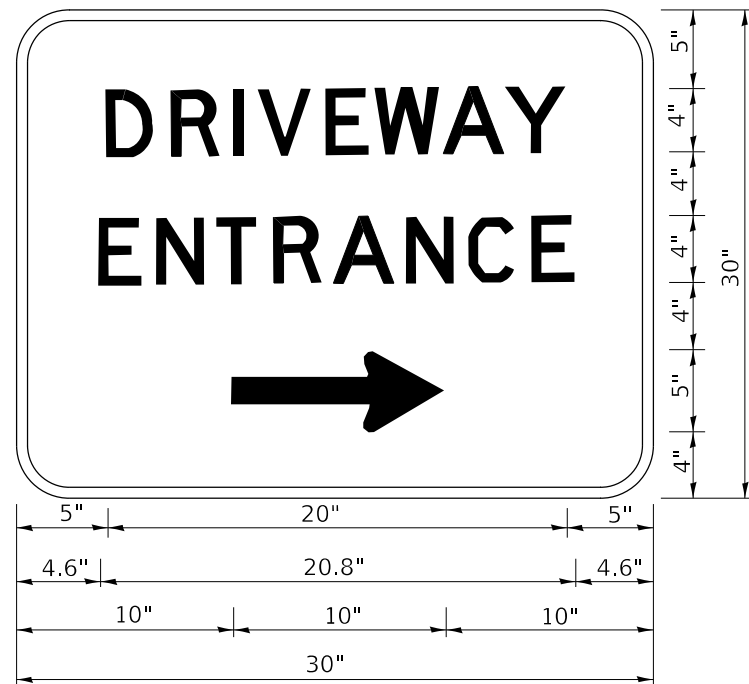
USER NAME = alshawabkehym	DESIGNED -	REVISED - R. MIRS 09-15-97
	DRAWN -	REVISED - R. MIRS 12-11-97
PLOT SCALE = 100.0000 ' / in.	CHECKED -	REVISED - T. RAMMACHER 02-02-99
PLOT DATE = 12/11/2019	DATE -	REVISED - C. JUCIUS 01-31-07

**STATE OF ILLINOIS  
DEPARTMENT OF TRANSPORTATION**

**ARTERIAL ROAD  
INFORMATION SIGN**

SCALE: NONE SHEET 1 OF 1 SHEETS STA. TO STA.

F.A.U. RTE.	SECTION	COUNTY	TOTAL SHEETS	SHEET NO.
1328	2019-089-RS&SW	COOK	28	23
<b>TC-22</b>			CONTRACT NO. <b>62J97</b>	
ILLINOIS FED. AID PROJECT				



3.0" RADIUS, 0.5" BORDER, WHITE ON GREEN; REFLECTORIZED  
 "DRIVEWAY" D; "ENTRANCE" D; STANDARD ARROW CUSTOM 12.0" x 5.0"

NOTES:

1. HALF OF THE SIGNS WILL REQUIRE A LEFT HAND FACING ARROW.
2. TWO SIGNS SHALL BE USED AT EACH COMMERCIAL ENTRANCE PLACED BACK-TO-BACK: ONE WITH A RIGHT HAND ARROW (SHOWN) SHALL BE PLACED ON THE NEAR RIGHT SIDE THE DRIVEWAY AND ONE WITH A LEFT HAND ARROW SHALL BE PLACED ON THE FAR LEFT SIDE OF THE DRIVEWAY.
3. SIGNS TO BE PAID FOR AS ITEM "TEMPORARY INFORMATION SIGNING".

MODEL: Default  
 FILE: Model: 20190809.dwg  
 PROJECT: 2019-089-RS&SW  
 OFFICE: 1328  
 DATE: 12/11/2019

USER NAME = alshawa@kehyh	DESIGNED -	REVISED - C. JUCIUS 02-15-07
	DRAWN -	REVISED -
PLOT SCALE = 100.0000' / in.	CHECKED -	REVISED -
PLOT DATE = 12/11/2019	DATE -	REVISED -

STATE OF ILLINOIS  
 DEPARTMENT OF TRANSPORTATION

DRIVEWAY ENTRANCE SIGNING

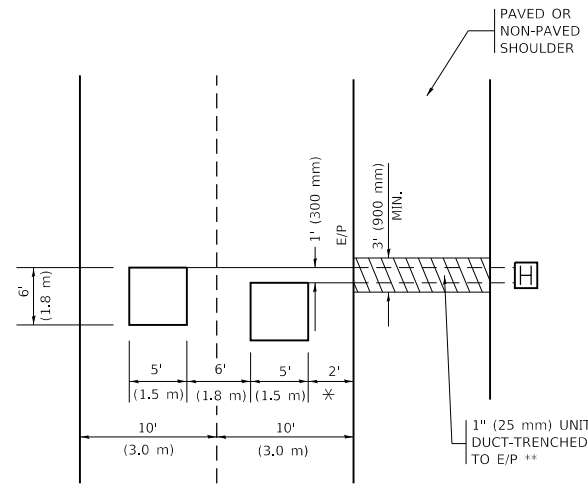
SCALE: NONE SHEET 1 OF 2 SHEETS STA. TO STA.

F.A.U. RTE.	SECTION	COUNTY	TOTAL SHEETS	SHEET NO.
1328	2019-089-RS&SW	COOK	28	24
TC-26			CONTRACT NO. 62J97	
ILLINOIS FED. AID PROJECT				



**LOOPS NEXT TO SHOULDERS**

PROVIDE A PAVEMENT REPLACEMENT NOTE WHICH SHOULD EQUAL 3' (900 mm) X WIDTH OF PAVED SHOULDER.

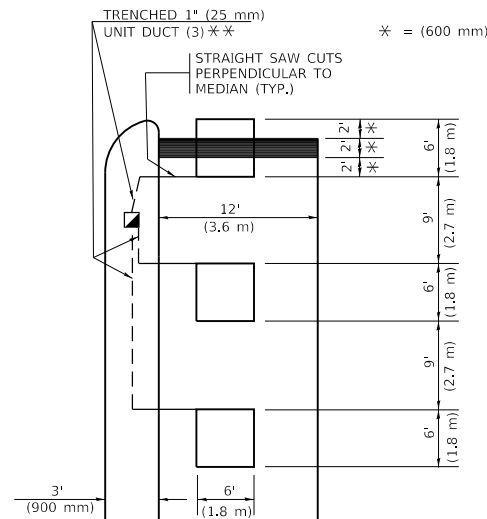


\* = (600 mm)

\*\* UNIT DUCT IS TO BE SHOWN ON PLAN SHEETS BUT SHALL NOT BE INCLUDED IN THE PAY ITEMS.

**LEFT TURN LANES WITH MEDIANS**  
**VOLUME DENSITY ("FAR OUT" DETECTION)**  
**ON SAME APPROACH**  
**(PROTECTED / PERMITTED LEFT TURN PHASING)**

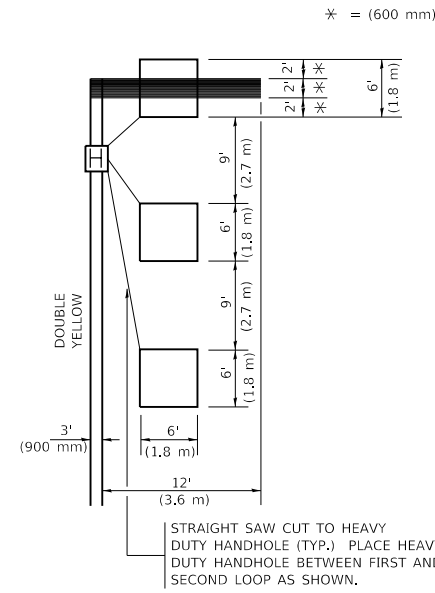
HANDHOLE LOCATION MAY VARY DEPENDING ON GEOMETRICS AND DESIGN OF TRAFFIC SIGNALS. HEAVY-DUTY HANDHOLES TO BE USED WHEN THE MEDIAN IS MOUNTABLE. REFER TO STANDARD 814001 TO ENSURE THAT HANDHOLE FITS IN MEDIAN.



\*\* UNIT DUCT IS TO BE SHOWN ON PLAN SHEETS BUT SHALL NOT BE INCLUDED IN THE PAY ITEMS.

NOTE: DUAL LEFT TURNS NOT SHOWN REFER TO PLAN SHEET FOR DETECTOR LOOP REPLACEMENT

**LEFT TURN LANES WITHOUT MEDIANS**  
**VOLUME DENSITY ("FAR OUT" DETECTION)**  
**ON SAME APPROACH**  
**(PROTECTED / PERMITTED LEFT TURN PHASING)**



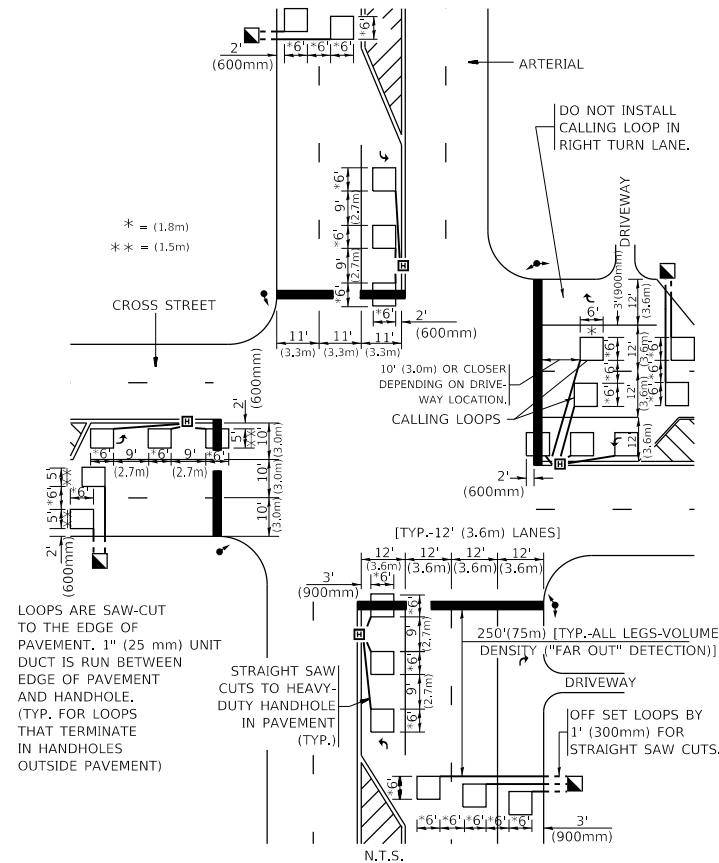
NOTE: DUAL LEFT TURNS NOT SHOWN REFER TO PLAN SHEET FOR DETECTOR LOOP REPLACEMENT

NOTES:

VEHICLES LOOP DETECTORS

- \* ALL LEAD IN CABLE SHALL BE TWO CONDUCTOR NO. 14 TWISTED, SHIELDED.
- \* EACH DETECTOR LOOP SHALL HAVE ITS OWN SAW CUT FROM THE LOOP TO THE EDGE OF PAVEMENT OR TO A HANDHOLE IN THE PAVEMENT.
- \* EACH DETECTOR LOOP SHALL HAVE ITS OWN ONE INCH (25 mm) UNIT DUCT BETWEEN THE EDGE OF PAVEMENT AND THE FIRST HANDHOLE OR JUNCTION BOX. EACH UNIT DUCT RUN SHALL BE SHOWN ON THE PLANS BY THE DESIGNER, BUT SHALL NOT BE PAID FOR SEPARATLY. THIS ITEM IS INCIDENTAL TO THE PAY ITEM FOR DETECTOR LOOPS.
- \* ONE DIMENSION OF ALL DETECTOR LOOPS SHALL BE SIX FEET (1.8 m)
- \* EACH LANE OF NON-LOCKING, PRESENCE DETECTION AND EACH LANE OF A DOUBLE LEFT TURN LANE REQUIRES A SEPARATE INDUCTIVE LOOP DETECTOR AND LEAD IN CABLE.
- \* WHEN NON-LOCKING, PRESENCE DETECTION IS USED, MORE THAN ONE LOOP PER LANE IS REQUIRED BEHIND THE STOP BAR (i.e. 1-1/2, 1-3/4, 2).
- \* WHEN SYSTEM LOOPS ARE REQUIRED ON AN APPROACH OF AN INTERSECTION, THE LOOPS USED FOR VOLUME DENSITY AND INTERSECTION TIMING SHALL ALSO BE USED AS SYSTEM DETECTORS. EACH ONE OF THESE TYPE OF LOOPS REQUIRES A SEPARATE TWO CONDUCTOR NO. 14 TWISTED SHIELDED CABLE AND A SEPARATE INDUCTIVE LOOP DETECTOR WHEN NEW CONTROLLERS ARE UTILIZED. THE DESIGNER SHALL LABEL THESE TYPES OF LOOPS AS "INTERSECTION AND SAMPLING (SYSTEM) DETECTORS" ON THE SIGNAL LAYOUT, THE INTERCONNECT PLAN AND THE SYSTEM CABLE PLAN. WHEN AN EXISTING CONTROLLER IS UTILIZED FOR THIS TYPE OF DETECTION, THE PAY ITEM "INDUCTIVE LOOP DETECTOR WITH SYSTEM OUTPUT" SHOULD BE USED.

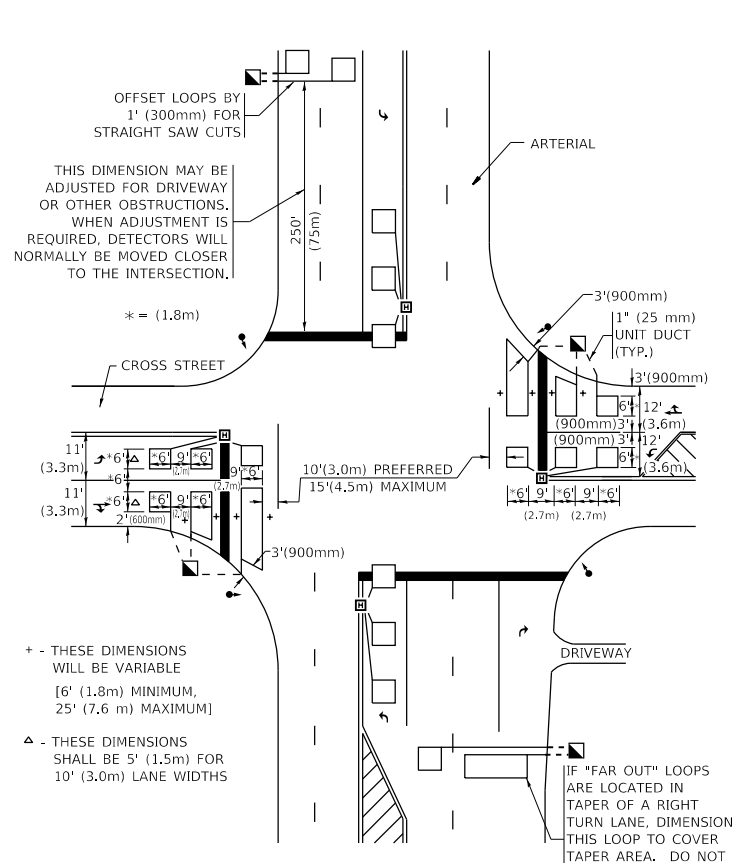
**ARTERIAL-VOLUME DENSITY ("FAR OUT" DETECTION)**  
**CROSS STREET-NON VOLUME DENSITY ("FAR OUT" DETECTION)**



LOOPS ARE SAW-CUT TO THE EDGE OF PAVEMENT. 1" (25 mm) UNIT DUCT IS RUN BETWEEN EDGE OF PAVEMENT AND HANDHOLE. (TYP. FOR LOOPS THAT TERMINATE IN HANDHOLES OUTSIDE PAVEMENT)

**DETAIL 1**  
N.T.S.

**ARTERIAL-VOLUME DENSITY ("FAR OUT" DETECTION)**  
**CROSS STREET-NON VOLUME DENSITY ("UPTIGHT" PRESENCE DETECTION)**



THIS DIMENSION MAY BE ADJUSTED FOR DRIVEWAY OR OTHER OBSTRUCTIONS. WHEN ADJUSTMENT IS REQUIRED, DETECTORS WILL NORMALLY BE MOVED CLOSER TO THE INTERSECTION.

**DETAIL 2**  
N.T.S.

PLACEMENT OF DETECTORS

THE FOLLOWING FIGURES REPRESENT THE MOST COMMON DETECTOR LOOP LOCATIONS AND SIZES. ADJUSTMENTS WILL BE NECESSARY FOR SPECIFIC GEOMETRIC CONSIDERATIONS.

LOCATIONS AND DEMENSIONS OF DETECTOR LOOPS ARE REQUIRED ON ALL SIGNAL LAYOUT PLAN SHEETS.

"FAR OUT" DETECTION REFERS TO LOCKING, PRESENCE TYPE DETECTION LOCATED IN THRU LANES, RIGHT TURN LANES, AND RIGHT TURN LANE TAPER AREAS (IF APPLICABLE), USUALLY 250' (75 m) IN ADVANCE OF STOP BARS. "UPTIGHT" DETECTION REFERS TO NON-LOCKING PRESENCE TYPE DETECTION LOCATED IN ALL LANES AND 10'-15' (3.0 m-4.5 m) BEHIND THE CROSSING STREET'S EDGE OF PAVEMENT EXTENDED.

NOTE:

ALL DETAILS AND NOTES SHOWN ARE FROM THE I.D.O.T. DISTRICT 1 TRAFFIC SIGNAL DESIGN GUIDELINES DATED JANUARY 1995

THIS DRAWING HAS BEEN PREPARED TO ASSIST THE RESIDENT ENGINEER FOR ALL ROADWAY RESURFACING OR S.M.A.R.T. PROJECTS WHERE THE DIMENSIONS ARE NOT SHOWN ON THE PLANS AND THE FINAL LOCATIONS FOR CROSSWALKS OR STOP BARS ARE NOT DETERMINED.

MODEL: Default  
 FILE: \\nashville-prod\pub\baronm.dwg  
 PROJECT: 127120\CaddData\Design\DRS54.dwg  
 DATE: 12/11/2019

USER NAME = alshawa@kehym	DESIGNED -	REVISED -
PLOT SCALE = 100.0000' / in.	DRAWN -	REVISED -
PLOT DATE = 12/11/2019	CHECKED - R.K.F.	REVISED -
	DATE -	REVISED -

**STATE OF ILLINOIS**  
**DEPARTMENT OF TRANSPORTATION**

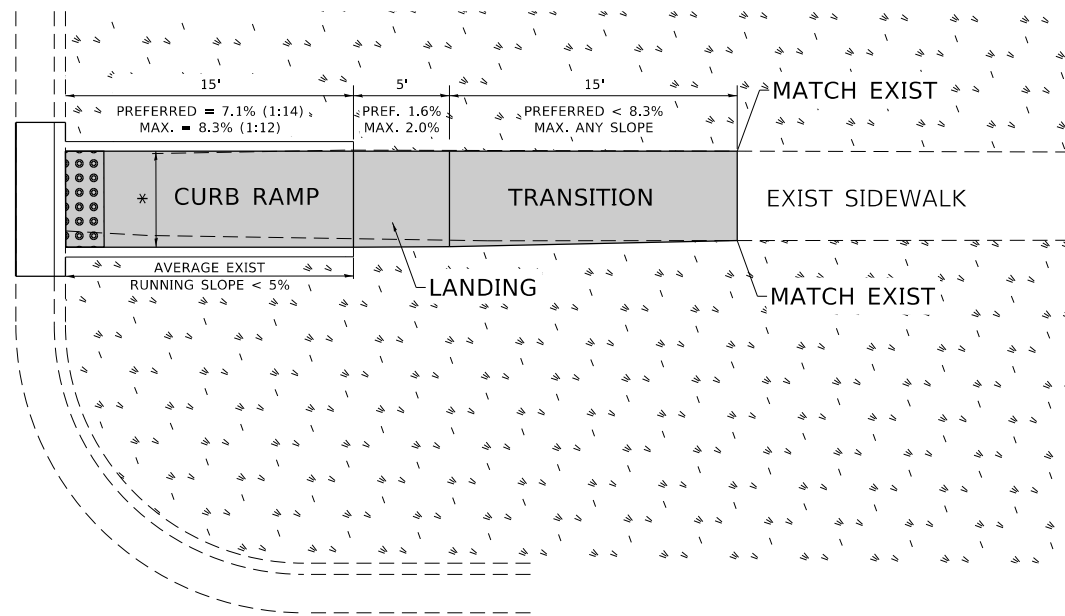
**DISTRICT 1 - DETECTOR LOOP INSTALLATION**  
**DETAILS FOR ROADWAY RESURFACING**

SCALE: NONE SHEET 1 OF 1 SHEETS STA. TO STA.

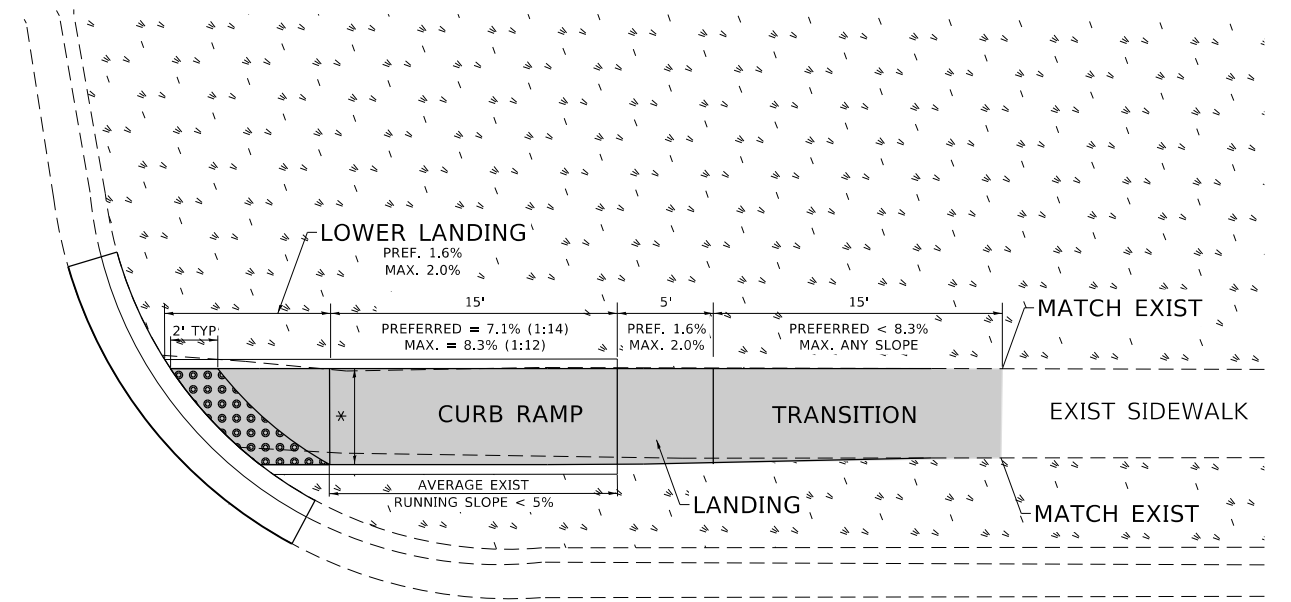
F.A.U. RTE.	SECTION	COUNTY	TOTAL SHEETS	SHEET NO.
1328	2019-089-RS&SW	COOK	28	25
<b>TS-07</b>		<b>CONTRACT NO. 62J97</b>		
ILLINOIS		FED. AID PROJECT		

# ADA DETAIL FOR SINGLE PERPENDICULAR CURB RAMPS W/ EXIST. 5% OR GREATER RUN. SLOPE

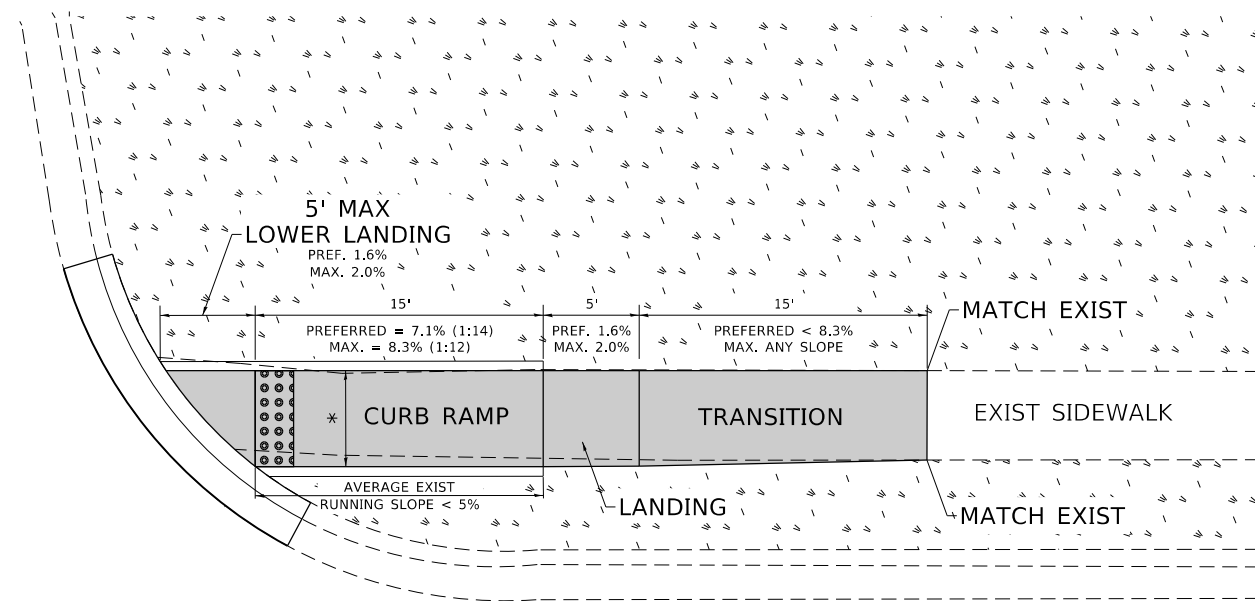
### PD-02A



### PD-02C



### PD-02B



#### LEGEND

- EXIST. GRASS
- PROPOSED SIDEWALK
- PROPOSED SIDE CURB
- DETECTABLE WARNINGS

#### CONSTRUCTION NOTES:

- 1) ALL CROSS SLOPES ARE PREFERRED 1.6% (1:64), MAXIMUM 2% (1:50) EXCEPT WHEN TRANSITIONING TO EXISTING SIDEWALK
- \* MATCH EXISTING SIDEWALK WIDTH

MODEL: Default  
FILE: \\baron.com\data\illinois\pav\pav\DOT\Documents\DOT - Office\Drawings\1\Projects\127120\CADD\data\Design\DRS\4.dgn

USER NAME = alshawabkehym	DESIGNED -	REVISED -
PLOT SCALE = 100.0000' / in.	DRAWN - R. LEDEZMA	REVISED -
PLOT DATE = 12/11/2019	CHECKED -	REVISED -
	DATE - 10/02/2019	REVISED -

STATE OF ILLINOIS  
DEPARTMENT OF TRANSPORTATION

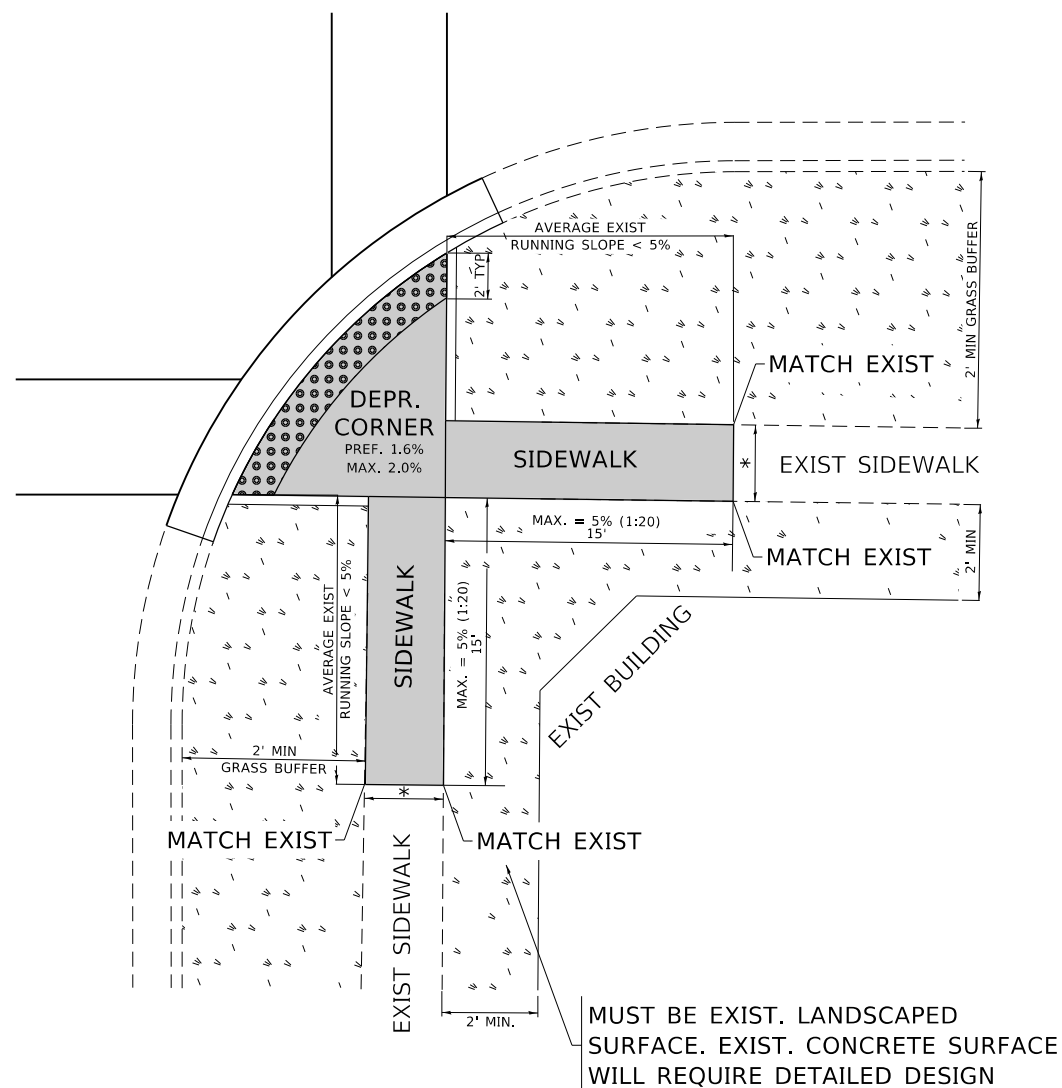
PROJECT DETAIL FOR SINGLE PERPENDICULAR CURB RAMPS  
(PD-02)

SCALE: NONE SHEET OF SHEETS STA. TO STA.

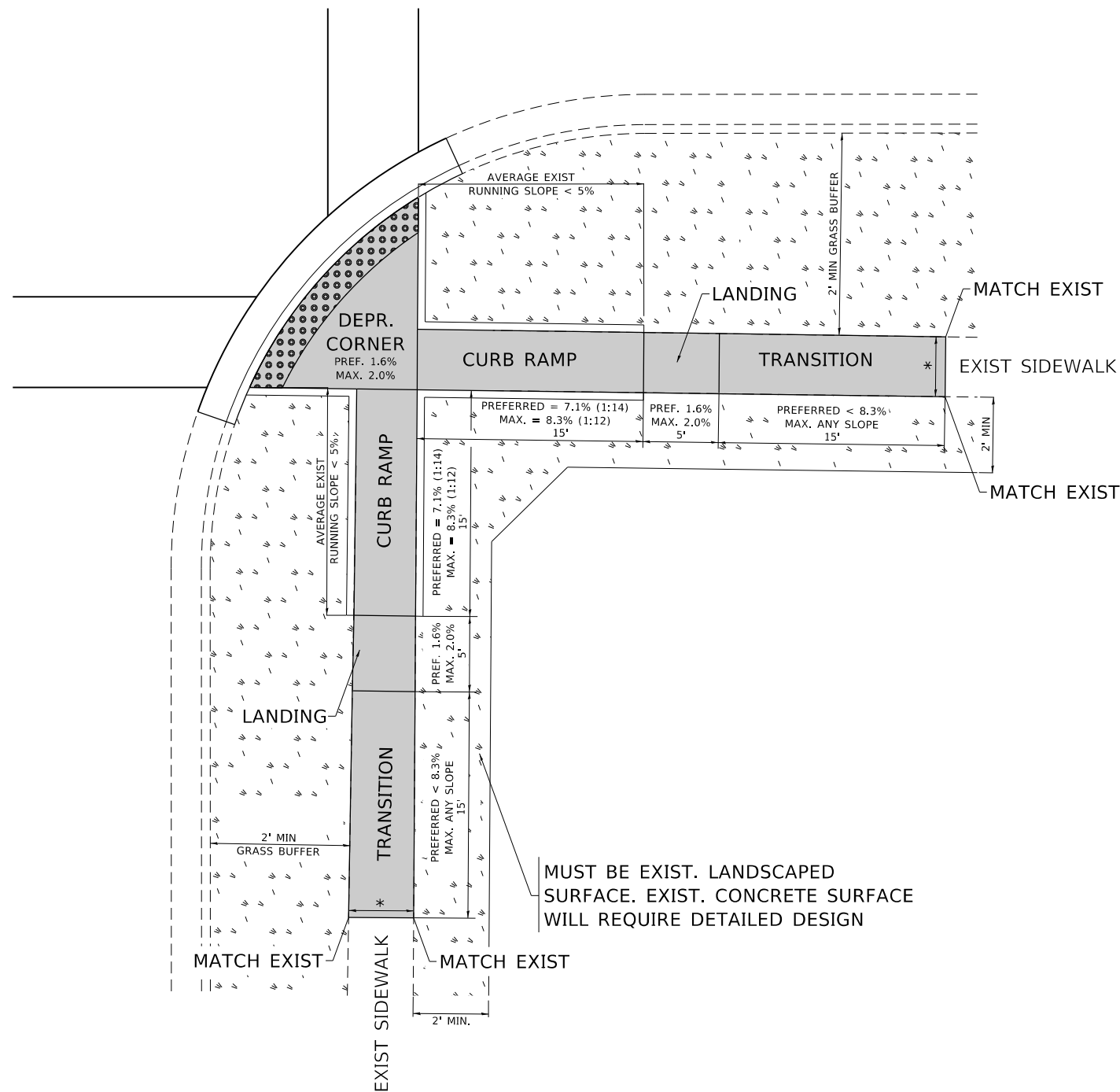
F.A.U. RTE.	SECTION	COUNTY	TOTAL SHEETS	SHEET NO.
1328	2019-089-RS&SW	COOK	28	26
PD-02			CONTRACT NO. 62J97	
ILLINOIS FED. AID PROJECT				

# ADA DETAIL FOR DEPRESSED CORNER CURB RAMPS

**PD-05A**



**PD-05B**



**LEGEND**

- PROPOSED SIDE CURB
- EXIST. GRASS
- PROPOSED SIDEWALK
- DETECTABLE WARNINGS

**CONSTRUCTION NOTES:**

- 1) ALL CROSS SLOPES ARE PREFERRED 1.6% (1:64), MAXIMUM 2% (1:50) EXCEPT WHEN TRANSITIONING TO EXISTING SIDEWALK
- \* MATCH EXISTING SIDEWALK WIDTH

MODEL: Default  
FILE: h:\m11c\_p\pub\barroom.dwg  
PROJECT: R:\PROJECTS\127120\CADD\DATA\Design\DESIGN.dwg

USER NAME = alshawabkehym	DESIGNED -	REVISED -
DRAWN - R. LEDEZMA	REVISIONS -	REVISED -
PLOT SCALE = 100.0000' / in.	CHECKED -	REVISED -
PLOT DATE = 12/11/2019	DATE - 10/02/2019	REVISED -

**STATE OF ILLINOIS  
DEPARTMENT OF TRANSPORTATION**

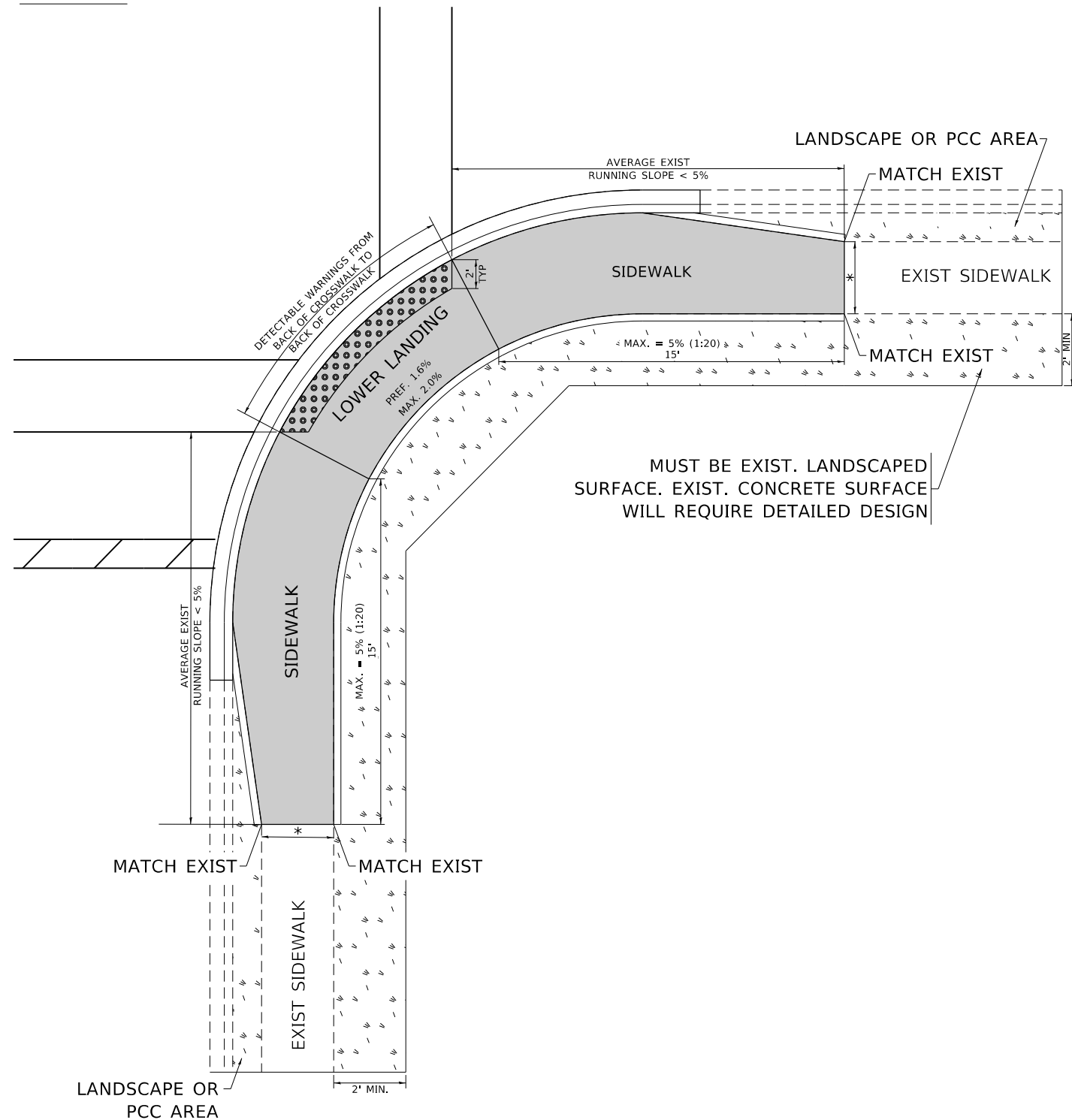
**PROJECT DETAIL FOR DEPRESSED CORNER CURB RAMPS  
(PD-05)**

SCALE: NONE    SHEET    OF    SHEETS    STA.    TO STA.

F.A.U. RTE.	SECTION	COUNTY	TOTAL SHEETS	SHEET NO.
1328	2019-089-RS&SW	COOK	28	27
PD-05		CONTRACT NO. 62J97		
ILLINOIS FED. AID PROJECT				

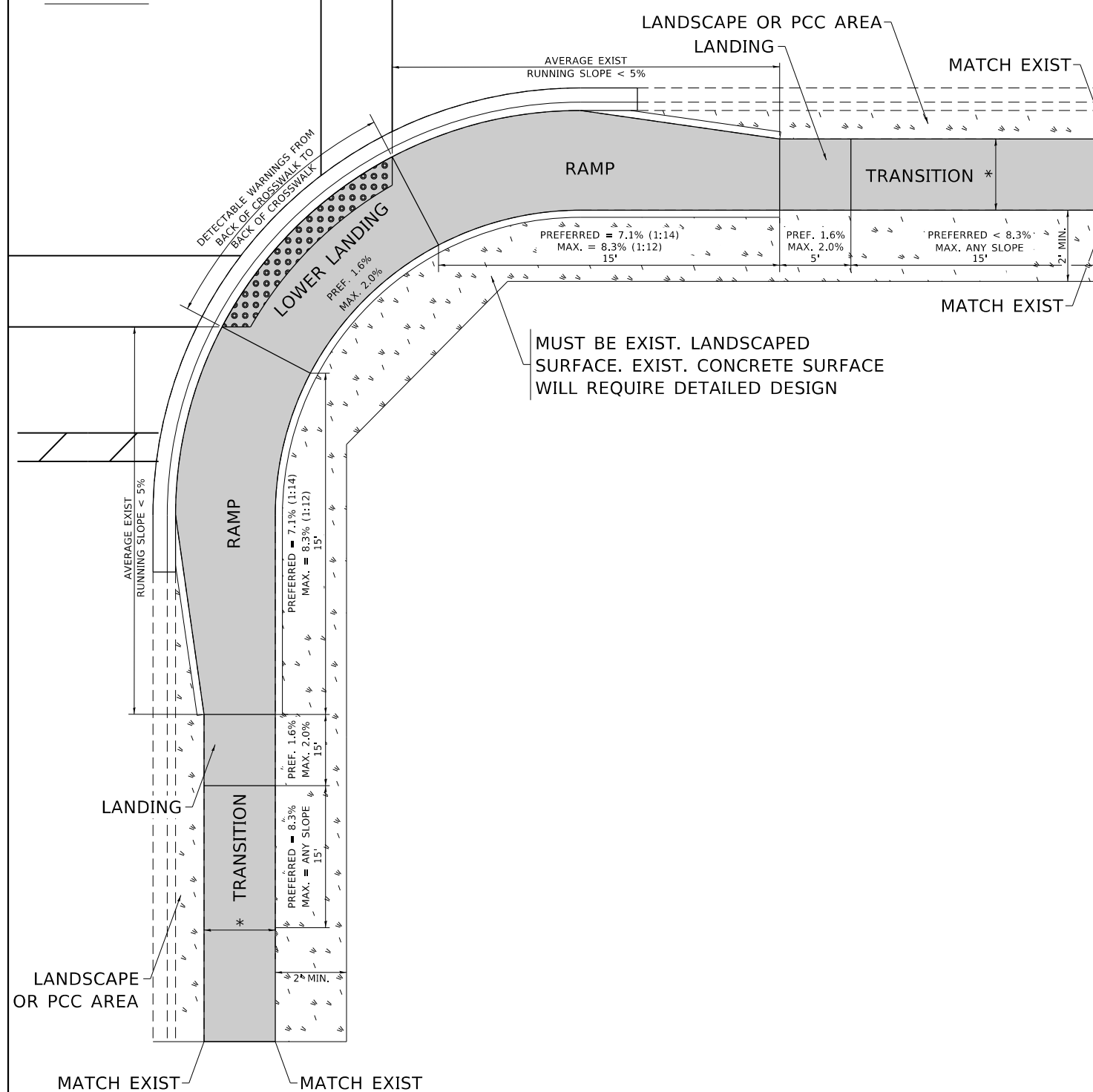
# ADA DETAIL FOR PARALLEL CURB RAMPS ADJACENT TO LANDSCAPING

**PD-06A**



MUST BE EXIST. LANDSCAPED SURFACE. EXIST. CONCRETE SURFACE WILL REQUIRE DETAILED DESIGN

**PD-06B**



MUST BE EXIST. LANDSCAPED SURFACE. EXIST. CONCRETE SURFACE WILL REQUIRE DETAILED DESIGN

**LEGEND**

-  EXIST. GRASS
-  PROPOSED SIDEWALK
-  DETECTABLE WARNINGS
-  PROPOSED SIDE CURB

**CONSTRUCTION NOTES:**

- 1) ALL CROSS SLOPES ARE PREFERRED 1.6% (1:64), MAXIMUM 2% (1:50) EXCEPT WHEN TRANSITIONING TO EXISTING SIDEWALK
- \* MATCH EXISTING SIDEWALK WIDTH

MODEL: Default  
FILE: Model - Parallel Ramp.dwg  
PROJECT: PD-06A  
DATE: 12/11/2019

USER NAME = alshawabkehym	DESIGNED -	REVISED -	
	DRAWN - R. LEDEZMA	REVISED -	
PLOT SCALE = 100.0000' / in.	CHECKED -	REVISED -	
PLOT DATE = 12/11/2019	DATE - 10/02/2019	REVISED -	

**STATE OF ILLINOIS  
DEPARTMENT OF TRANSPORTATION**

**PROJECT DETAIL FOR PARALLEL CURB RAMPS  
(PD-06)**

SCALE: NONE    SHEET    OF    SHEETS    STA.    TO STA.

F.A.U. RTE.	SECTION	COUNTY	TOTAL SHEETS	SHEET NO.
1328	2019-089-RS&SW	COOK	28	28
PD-06			CONTRACT NO. 62J97	
ILLINOIS		FED. AID PROJECT		