

037

03-06-2020 LETTING ITEM 037

STATE OF ILLINOIS
DEPARTMENT OF TRANSPORTATION

F.A.P. RTE.	SECTION	COUNTY	TOTAL SHEETS	SHEET NO.
694	75M-1	LEE	17	J
		ILLINOIS	CONTRACT NO. 64M29	

FOR INDEX OF SHEETS, SEE SHEET NO. 2

PROPOSED HIGHWAY PLANS

F.A.P. ROUTE 694 (US 52)
SECTION 75M-1
PROJECT STP-F85A (908)
ADA IMPROVEMENT
LEE COUNTY

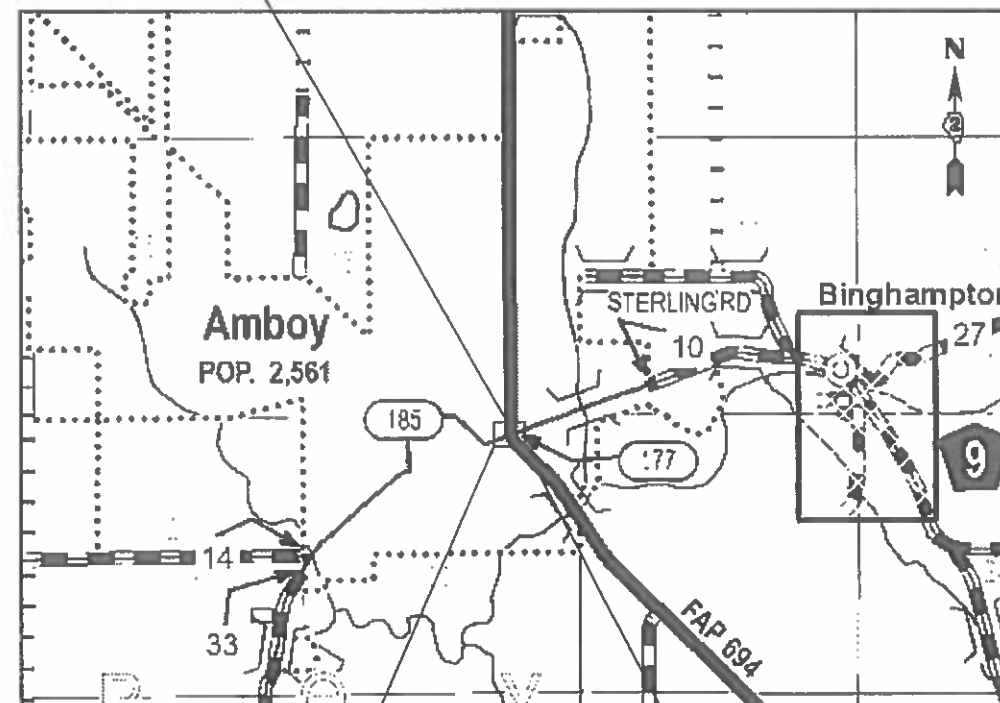
C-92-040-19



SECTION BEGINS:
STA 980+64.16

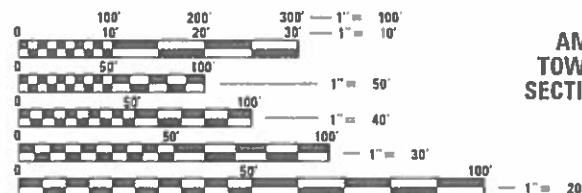
R 10 E

T 20 N



PROJECT LOCATION
US 52 & MAIN STREET

SECTION ENDS:
STA 981+85.37



AMBOY
TOWNSHIP
SECTIONS 22

FULL SIZE PLANS HAVE BEEN PREPARED USING STANDARD ENGINEERING SCALES. REDUCED SIZED PLANS WILL NOT CONFORM TO STANDARD SCALES. IN MAKING MEASUREMENTS ON REDUCED PLANS, THE ABOVE SCALES MAY BE USED.

J.U.L.I.E.
JOINT UTILITY LOCATION INFORMATION FOR EXCAVATORS
1-800-892-0123
DR 811

PROJECT ENGINEER: STEVE ROBERY, P.E.
PROJECT MANAGER: A.J. CUCCIO, (815) 284-5504

CONTRACT NO. 64M29

GROSS LENGTH = 93.21 FT. = 0.018 MILE
NET LENGTH = 93.21 FT. = 0.018 MILE

**BURNS
MCDONNELL**
CONTACT: MATTHEW PAPIRNIK

STATE OF ILLINOIS
DEPARTMENT OF TRANSPORTATION

SUBMITTED Dec 04, 2019
James Ahmad
REGIONAL ENGINEER

Jan 31, 2020
James Ahmad
ENGINEER OF DESIGN AND ENVIRONMENT

Jan 31, 2020
James Ahmad
DIRECTOR OF HIGHWAYS PROJECT IMPLEMENTATION 13

PRINTED BY THE AUTHORITY
OF THE STATE OF ILLINOIS

INDEX OF SHEETS

FROM	TO	SHEET TYPE / TITLE
1		COVER SHEET
2		INDEX OF SHEETS AND STANDARDS
3		GENERAL NOTES
4	TO 6	SUMMARY OF QUANTITIES
7	TO 8	SCHEDULE OF QUANTITIES
9		ALIGNMENT, TIES AND BENCHMARKS - US ROUTE 52
10		AMBOY US ROUTE 52 AND MAIN STREET
11		ADA RAMP DESIGN US ROUTE 52 AT E MAIN STREET
12		ADA RAMP DESIGN US ROUTE 52 AT NW MAIN STREET
13		ADA RAMP DESIGN US ROUTE 52 AT SW MAIN STREET
14		DISTRICT 2 STANDARDS: PC CONCRETE ISLANDS AND MEDIANS ACCESSIBLE TO DISABLED (4.1)
15	TO 17	DISTRICT 2 STANDARDS: TYPICAL PAVEMENT MARKINGS (41.1)

STATE STANDARDS

000001-07	STANDARD SYMBOLS, ABBREVIATIONS AND PATTERNS
001006	DECIMAL OF AN INCH AND OF A FOOT
420001-09	PAVEMENT JOINTS
424001-11	PERPENDICULAR CURB RAMPS FOR SIDEWALKS
424006-04	DIAGONAL CURB RAMPS FOR SIDEWALKS
424011-04	CORNER PARALLEL CURB RAMPS FOR SIDEWALKS
424021-05	DEPRESSED CORNER FOR SIDEWALKS
424031-02	MEDIAN PEDESTRIAN CROSSINGS
442201-03	CLASS C AND D PATCHES
606001-07	CONCRETE CURB TYPE B AND COMBINATION CONCRETE CURB AND GUTTER
606301-04	PC CONCRETE ISLANDS AND MEDIANS
701006-05	OFF-ROAD OPERATIONS, 2L, 2W, 15' (4.5 m) TO 24" (600 mm) FROM PAVEMENT EDGE
701301-04	LANE CLOSURE, 2L, 2W, SHORT TIME OPERATIONS
701311-03	LANE CLOSURE, 2L, 2W, MOVING OPERATIONS - DAY ONLY
701501-06	URBAN LANE CLOSURE, 2L, 2W, UNDIVIDED
701701-10	URBAN LANE CLOSURE, MULTILANE INTERSECTION
701801-06	SIDEWALK, CORNER OR CROSSWALK CLOSURE
701901-08	TRAFFIC CONTROL DEVICES
720011-01	METAL POSTS FOR SIGNS, MARKERS AND DELINEATORS
728001-01	TELESCOPING STEEL SIGN SUPPORT
729001-01	APPLICATIONS OF TYPES A AND B METAL POSTS (FOR SIGNS & MARKERS)
780001-05	TYPICAL PAVEMENT MARKINGS

DESIGNED - JMA	REVISED - AJC - 11/20/2019
DRAWN - JMA	REVISED -
CHECKED - AJC	REVISED -
DATE - 11/20/2019	REVISED -

**STATE OF ILLINOIS
DEPARTMENT OF TRANSPORTATION**

INDEX OF SHEETS

SCALE: 1" = 50' SHEET OF SHEETS STA. TO STA.

F.A.P. RTE.	SECTION	COUNTY	TOTAL SHEETS	SHEET NO.
694	75M-1	LEE	17	2
CONTRACT NO.				64M29
ILLINOIS FED. AID PROJECT				

GENERAL NOTES

1. THE FINAL TOP FOUR INCHES OF SOIL IN ANY RIGHT-OF-WAY AREA DISTURBED BY THE CONTRACTOR MUST BE CAPABLE OF SUPPORTING VEGETATION. THE SOIL MUST BE FROM THE A HORIZON (ZERO TO 2 IN DEEP) OF SOIL PROFILES OF LOCAL SOILS. THE COST OF THIS WORK SHALL BE INCLUDED IN THE UNIT PRICES BID AND NO ADDITIONAL COMPENSATION WILL BE ALLOWED.
2. FERTILIZER SHALL BE APPLIED TO ALL DISTURBED AREAS AND INCORPORATED INTO THE SEEDBED PRIOR TO SEEDING OR PLACEMENT OF SOD AT THE RATE SPECIFIED IN SECTIONS 250 AND 252 OF THE STANDARD SPECIFICATIONS. THIS WORK SHALL BE INCLUDED IN THE COST OF EARTH EXCAVATION.
3. EXISTING SURVEY APPURTENANCES ARE TO BE PROTECTED DURING THE WORK. A QUANTITY OF PROPERTY MARKERS IS PROVIDED IN THE PLANS IN THE EVENT THAT PROPERTY CORNERS ARE DISTURBED DURING THE WORK. THIS QUANTITY WILL BE USED AS DIRECTED BY THE ENGINEER.
4. CADD DATA WILL BE AVAILABLE TO CONTRACTORS AND CONSULTANTS WORKING ON THIS PROJECT. THIS INFORMATION WILL BE PROVIDED BY DIRECT REQUEST TO THE DISTRICT'S PROJECT ENGINEER, AND WILL BE PROVIDED AS MICROSTATION CADD FILES AND GEOPAK COORDINATE GEOMETRY *ONLY*. IF DATA IS REQUIRED IN OTHER FORMATS, IT WILL BE THE RESPONSIBILITY OF THE CONTRACTOR TO DEVELOP CONVERSIONS AND VERIFY THEIR ACCURACY. IF ANY DISCREPANCY OR INCONSISTENCY ARISES BETWEEN ELECTRONIC DATA AND INFORMATION ON THE HARD COPY, THE HARD COPY SHOULD BE USED.
5. A QUANTITY OF AGGREGATE BASE COURSE, TYPE B IS PROVIDED IN THE PLAN QUANTITIES FOR USE IN THE BACKFILL OF PAVEMENT AND SIDEWALK ELEMENTS. IT SHALL BE USED ONLY AS NEEDED AND AS DIRECTED BY THE ENGINEER.
6. A QUANTITY FOR TEMPORARY RAMPS IS PROVIDED IN THE PLAN QUANTITIES FOR USE AS DIRECTED BY THE ENGINEER. PEDESTRIAN ACCESS MUST BE MAINTAINED THROUGHOUT PAVEMENT AND SIDEWALK RECONSTRUCTION.
7. THE CONTRACTOR SHALL BE RESPONSIBLE FOR LOCATING AND PROTECTING UTILITY PROPERTY DURING CONSTRUCTION OPERATIONS AS OUTLINED IN ARTICLE 107.39 OF THE STANDARD SPECIFICATIONS. A MINIMUM OF 48 HOURS ADVANCE NOTICE IS REQUIRED FOR NON-EMERGENCY WORK. THE JULIE NUMBER IS 800-892-0123. IDOT IS NOT A MEMBER OF JULIE. IF YOU ARE NEAR ANY OVERHEAD LIGHTING, INTERSECTION LIGHTING OR TRAFFIC SIGNALS, CONTACT THE IDOT TRAFFIC OFFICE AT 815/284-5469 AT LEAST 48 HOURS PRIOR TO WORK.
8. IT SHALL BE THE CONTRACTOR'S RESPONSIBILITY TO CONTACT THE MUNICIPALITY TO DETERMINE APPROVED METHODS OF UTILITY STRUCTURE ADJUSTMENT. UTILITY STRUCTURES MAY INCLUDE, BUT ARE NOT LIMITED TO, MANHOLES, WATER VALVES, HANDHOLES, ETC. ALL MATERIALS AND WORK NECESSARY TO COMPLETE ADJUSTMENTS PER MUNICIPALITY REQUIREMENTS SHALL BE CONSIDERED INCLUDED IN THE COST OF THE ASSOCIATED ADJUSTMENT PAY ITEM.
9. FULL DEPTH PAVEMENT REMOVED IN ADDITION TO EXISTING COMBINATION CONCRETE CURB AND GUTTER REMOVED IN ORDER FOR CONCRETE CURB AND GUTTER, TYPE B-6.24 TO BE INSTALLED SHALL BE PAID FOR AS PAVEMENT REMOVAL. THIS QUANTITY IS INCLUDED IN THE SCHEDULES FOR PAVEMENT REMOVAL, BUT MAY NOT ALWAYS BE DEPICTED ON THE PLANS.
10. ALL BORROW/WASTE/USE SITES MUST BE APPROVED BY THE DEPARTMENT PRIOR TO REMOVING ANY MATERIAL FROM THE PROJECT OR INITIATING ANY EARTHMOVING ACTIVITIES, INCLUDING TEMPORARY STOCKPILING OUTSIDE THE LIMITS OF CONSTRUCTION.
11. THE NEW MANHOLE LIDS ON THIS PROJECT SHALL HAVE THE WORD "STORM", "SANITARY" OR "WATER" ON THE LID. THE WORD TO BE USED IS NOTED ON THE PLANS. IT WILL BE THE CONTRACTORS RESPONSIBILITY TO DETERMINE THE WORD USED ON OTHER LIDS NOT NOTED ON THE PLANS. NO ADDITIONAL COMPENSATION WILL BE ALLOWED FOR THIS WORK.
12. THE CONTRACTOR SHALL BE RESPONSIBLE FOR COLLECTING AND MAINTAINING AN ELECTRONIC LOG OF ALL STAKEOUT SURVEY THAT IS PERFORMED ON THE JOB, EITHER BY HIM/HER OR ANY SUB-CONTRACTOR PERFORMING THE STAKEOUT. UPON REQUEST, ALL LOGS SHALL BE SUBMITTED TO THE DEPARTMENT. NO ADDITIONAL COMPENSATION WILL BE ALLOWED FOR THIS WORK, BUT SHALL BE CONSIDERED INCLUDED IN THE COST FOR CONSTRUCTION LAYOUT.
13. THE AREA TO BE TACKED OR PRIMED SHALL BE LIMITED TO THAT WHICH CAN BE COVERED WITH HMA ON THE NEXT DAYS PRODUCTION, BUT NO MORE THAN FIVE DAYS IN ADVANCE OF THE PLACEMENT OF THE HMA, UNLESS APPROVED BY THE ENGINEER.
14. THE CONTRACTOR SHALL DETERMINE FLOWLINES OF EXISTING SEWER LINES WHICH ARE SHOWN ON THE PLANS AS ESTIMATED OR UNKNOWN. THIS INFORMATION IS NECESSARY BEFORE ORDERING INLETS AND MANHOLES.

19. TIE BARS SHALL BE INSTALLED TO TIE PCC APPURTENANCE TO ADJACENT EXISTING CONCRETE PAVEMENT.
 TIE THE FOLLOWING TO THE EXISTING CONCRETE PAVEMENT LENGTH, SIZE, AND SPACING OF TIE BARS
 GUTTER OR CURB & GUTTER STD. 60600124" LONG NO. 6 @ 36" CENTERS
 PCC BASE COURSE STD. 35300124" LONG NO. 6 @ 36" CENTERS
 PCC PAVEMENT STD. 42010124" LONG NO. 6 @ 36" CENTERS
 TIE BARS TO BE INSTALLED IN ACCORDANCE WITH THE APPLICABLE PORTIONS OF ARTICLE 420.05(B) OF THE STANDARD SPECIFICATIONS. SEE HIGHWAY STANDARD 420001 FOR DETAIL ON LONGITUDINAL CONSTRUCTION JOINT GROUTED-INPLACE TIE BAR. THE COST OF THE TIE BARS TO BE INCLUDED IN THE COST OF THE PCC APPURTENANCE ADJACENT TO THE EXISTING PAVEMENT.
20. BEFORE THE NEWLY CONSTRUCTED AND COMPLETED SIDEWALK AND CURB RAMPS ARE OPEN TO PEDESTRIAN TRAFFIC, THE CONTRACTOR SHALL BACKFILL AND PLACE TOPSOIL FURNISH AND PLACE SO THAT ALL THE GRADING TASKS ARE COMPLETE. THERE SHALL NOT BE ANY DROP-OFF OUTSIDE THE SIDEWALKS AND CURB RAMPS WHICH WILL BE HAZARDOUS TO PEDESTRIANS.

COMMITMENTS

UTILITY MATRIX

MR. BRUCE KOPPANG	GAS	(630) 388-3046
NICOR GAS CO. 1844 FERRY ROAD NAPERVILLE, IL 60563 J.U.L.I.E. - YES (800) 892-0123		
MR. KEITH KOSHINSKI	CATV	(224) 229-5432
COMCAST CABLE 4450 KISHWAUKEE STREET ROCKFORD, IL 61109 J.U.L.I.E. - YES (800) 892-0123		
MR. LANCE SANDY	COMMUNICATIONS	(815) 753-6075
IFIBER 3100 SYCAMORE ROAD DEKALB, IL 60115 J.U.L.I.E. -		
MR. AL STENZEL	WATER & SEWER	(815) 857-2422
CITY OF AMBOY 227 E. MAIN STREET AMBOY, IL 61310 J.U.L.I.E. - YES (815) 857-2422		
MR. BRAD MORSETH	COMMUNICATIONS	(612) 605-5508
LIGHTCORE 5480 FELTL ROAD MINNETONKA, MN 55343 J.U.L.I.E. - YES (800) 892-0123		
MR. DON BELMORE	TELEPHONE	(815) 544-6171
FRONTIER (NORTH) 2239 NEWBURG ROAD BELVIDERE, IL 61008 J.U.L.I.E. - YES (800) 892-0123		
MR. ADAM SADKOWSKI	ELECTRIC	(630) 985-4043
COMMONWEALTH EDISON COMPANY 123 ENERGY AVENUE ROCKFORD, IL 61109 J.U.L.I.E. - YES		

DESIGNED - JMA	REVISED - AJC - 11/20/2019	STATE OF ILLINOIS DEPARTMENT OF TRANSPORTATION	GENERAL NOTES				F.A.P. RTE.	SECTION	COUNTY	TOTAL SHEETS	SHEET NO.
DRAWN - JMA	REVISED -						694	75M-1	LEE	17	3
CHECKED - AJC	REVISED -						CONTRACT NO. 64M29				
DATE - 11/20/2019	REVISED -		SCALE: N/A	SHEET	OF	SHEETS	STA.			TO STA.	ILLINOIS FED. AID PROJECT

SUMMARY OF QUANTITIES

CONSTR. CODE
80% FEDERAL - STP 20% STATE
SAFETY
0021
RURAL

CODE NO.	ITEM	UNIT	TOTAL QUANTITY	CONSTR. CODE
20200100	EARTH EXCAVATION	CU YD	60	60
21101615	TOPSOIL FURNISH AND PLACE, 4"	SQ YD	126	126
25200100	SODDING	SQ YD	126	126
28000510	INLET FILTERS	EACH	2	2
35101400	AGGREGATE BASE COURSE, TYPE B	TON	13	13
40600290	BITUMINOUS MATERIALS (TACK COAT)	POUND	204	204
40600982	HOT-MIX ASPHALT SURFACE REMOVAL - BUTT JOINT	SQ YD	150	150
40600990	TEMPORARY RAMP	SQ YD	150	150
40800050	INCIDENTAL HOT-MIX ASPHALT SURFACING	TON	39	39
42400200	PORTLAND CEMENT CONCRETE SIDEWALK 5 INCH	SQ FT	2426	2426
* 42400800	DETECTABLE WARNINGS	SQ FT	96	96
44000100	PAVEMENT REMOVAL	SQ YD	91	91
44000155	HOT-MIX ASPHALT SURFACE REMOVAL, 1 1/2"	SQ YD	448	448
44000200	DRIVEWAY PAVEMENT REMOVAL	SQ YD	6	6

* SPECIALTY ITEM

MODEL: Default
FILE: h:\a\c\p\pub\harcourt\dat\illinois.gov\PWIDOT\Documents\DOT_Offices\District 2\Projects\64M29\Program_Development\Studies & Plans\Design\CADD\CAD\Sheet\64M29-Sub-SOQ_Import.dgn

USER NAME = cuccioaj	DESIGNED -	REVISED -
	DRAWN -	REVISED -
PLOT SCALE = 100.0000' / in.	CHECKED -	REVISED -
PLOT DATE = 11/21/2019	DATE -	REVISED -

**STATE OF ILLINOIS
DEPARTMENT OF TRANSPORTATION**

SUMMARY OF QUANTITIES

SCALE: SHEET 1 OF 3 SHEETS STA. TO STA.

F.A.P. RTE.	SECTION	COUNTY	TOTAL SHEETS	SHEET NO.
694	75M-1	LEE	17	4
CONTRACT NO. 64M29				
ILLINOIS FED. AID PROJECT				

SUMMARY OF QUANTITIES

CODE NO.	ITEM	UNIT	TOTAL QUANTITY	CONSTR. CODE	
				80% FEDERAL - STP	
				20% STATE SAFETY	
					0021 RURAL
44000500	COMBINATION CURB AND GUTTER REMOVAL	FOOT	193	193	
44000600	SIDEWALK REMOVAL	SQ FT	2040	2040	
44003100	MEDIAN REMOVAL	SQ FT	139	139	
44201341	CLASS C PATCHES, TYPE II, 9 INCH	SQ YD	14	14	
60255500	MANHOLES TO BE ADJUSTED	EACH	2	2	
60605000	COMBINATION CONCRETE CURB AND GUTTER, TYPE B-6.24	FOOT	194	194	
60608600	COMBINATION CONCRETE CURB AND GUTTER, TYPE M-6.06	FOOT	26	26	
60610400	COMBINATION CONCRETE CURB AND GUTTER, TYPE M-6.24	FOOT	57	57	
60618300	CONCRETE MEDIAN SURFACE, 4 INCH	SQ FT	15	15	
* 66900105	UNDERGROUND STORAGE TANK REMOVAL	EACH	1	1	
* 66900200	NON-SPECIAL WASTE DISPOSAL	CU YD	13	13	
* 66900530	SOIL DISPOSAL ANALYSIS	EACH	1	1	
* 66901001	REGULATED SUBSTANCES PRE-CONSTRUCTION PLAN	LSUM	1	1	
66901006	REGULATED SUBSTANCES MONITORING	CAL DA	2	2	

* SPECIALTY ITEM

MODEL: C:\p1\it
FILE NAME: p:\planroom.dat\illinois.gov\PI\DOT\Documents\DOT_Offices\District 2\Projects\64M29\Program_Developments\Studies & Plans\Design\CADD\CAD\Drawings\64M29-RT-SQ_Import.dgn

USER NAME = cuccioaj	DESIGNED -	REVISED -	STATE OF ILLINOIS DEPARTMENT OF TRANSPORTATION	SUMMARY OF QUANTITIES	F.A.P. RTE. 694	SECTION 75M-1	COUNTY LEE	TOTAL SHEETS 17	SHEET NO. 5		
PLOT SCALE = 100.0000' / in.	CHECKED -	REVISED -			SCALE:	SHEET 2 OF 3 SHEETS	STA.	TO STA.	CONTRACT NO. 64M29		
PLOT DATE = 11/21/2019	DATE -	REVISED -			ILLINOIS FED. AID PROJECT						

SUMMARY OF QUANTITIES

CODE NO.	ITEM	UNIT	TOTAL QUANTITY	CONSTR. CODE	
				80% FEDERAL - STP	20% STATE SAFETY
				0021	RURAL
* 66901003	REGULATED SUBSTANCES FINAL CONSTRUCTION REPORT	LSUM	1	1	
67100100	MOBILIZATION	L SUM	1	1	
70102620	TRAFFIC CONTROL AND PROTECTION, STANDARD 701501	L SUM	1	1	
70102635	TRAFFIC CONTROL AND PROTECTION, STANDARD 701701	L SUM	1	1	
70102640	TRAFFIC CONTROL AND PROTECTION, STANDARD 701801	L SUM	1	1	
70103815	TRAFFIC CONTROL SURVEILLANCE	CAL DA	5	5	
* 72000100	SIGN PANEL - TYPE 1	SQ FT	12.5	12.5	
* 72800100	TELESCOPING STEEL SIGN SUPPORT	FOOT	9.5	9.5	
* 72900200	METAL POST - TYPE B	FOOT	13.5	13.5	
* 78000400	THERMOPLASTIC PAVEMENT MARKING - LINE 6"	FOOT	432	432	
* 78000500	THERMOPLASTIC PAVEMENT MARKING - LINE 8"	FOOT	206	206	
* 78000600	THERMOPLASTIC PAVEMENT MARKING - LINE 12"	FOOT	35	35	
* 78000650	THERMOPLASTIC PAVEMENT MARKING - LINE 24"	FOOT	53	53	
Z0013798	CONSTRUCTION LAYOUT	L SUM	1	1	
* Z0025505	PROPERTY MARKERS	EACH	4	4	

* SPECIALTY ITEM

MODEL: Default
FILE: h:\a\c\p\pub\harcourt\illinois.gov\PWIDOT\Documents\DOT_Offices\Draft\2_Projects\64M29\Program_Development\Studies & Plans\Design\CADD\CAD\Sheet\64M29-Sub-SOQ_Import.dgn

USER NAME = cuccioaj	DESIGNED -	REVISED -
	DRAWN -	REVISED -
PLOT SCALE = 100.0000' / in.	CHECKED -	REVISED -
PLOT DATE = 11/21/2019	DATE -	REVISED -

**STATE OF ILLINOIS
DEPARTMENT OF TRANSPORTATION**

SUMMARY OF QUANTITIES

SCALE: SHEET 3 OF 3 SHEETS STA. TO STA.

F.A.P. RTE.	SECTION	COUNTY	TOTAL SHEETS	SHEET NO.
694	75M-1	LEE	17	6
CONTRACT NO. 64M29				
ILLINOIS		FED. AID PROJECT		

SCHEDULE OF QUANTITIES – AMBOY

PAY ITEM: 20200100 EARTH EXCAVATION

INTERSECTION	QUANTITY BY QUADRANT				TOTAL	(CU YD)
	NE	NW	SW	SE		
US 52 at Main St	7.7	20.9	13.6	14.5	56.6	
TOTAL QUANTITY					60.0	

PAY ITEM: 42400800 DETECTABLE WARNINGS

INTERSECTION	QUANTITY BY QUADRANT				TOTAL	(SQ FT)
	NE	NW	SW	SE		
US 52 at Main St	20	10	46	20	96	
TOTAL QUANTITY					96	

PAY ITEM: 60255500 MANHOLES TO BE ADJUSTED

INTERSECTION	QUANTITY BY QUADRANT				TOTAL	(EACH)
	NE	NW	SW	SE		
US 52 at Main St	0	0	1	1	2	
TOTAL QUANTITY					2	

PAY ITEM: 21101615 TOPSOIL FURNISH AND PLACE, 4"

SO_YD	LOCATION
TOTAL 126	REFER TO SODDING LOCATIONS

PAY ITEM: 44000100 PAVEMENT REMOVAL

INTERSECTION	QUANTITY BY QUADRANT				TOTAL	(SQ YD)
	NE	NW	SW	SE		
US 52 at Main St	0.0	36.4	54.0	0.0	90.4	
TOTAL QUANTITY					91.0	

PAY ITEM: 60605000 COMBINATION CONCRETE CURB AND GUTTER, TYPE B-6.24

INTERSECTION	QUANTITY BY QUADRANT				TOTAL	(FOOT)
	NE	NW	SW	SE		
US 52 at Main St	23	82	52	37	194	
TOTAL QUANTITY					194	

PAY ITEM: 25200100 SODDING

INTERSECTION	QUANTITY BY QUADRANT				TOTAL	(SQ YD)
	NE	NW	SW	SE		
US 52 at Main St	32	14	11	69	126	
TOTAL QUANTITY					126	

PAY ITEM: 44000155 HOT-MIX ASPHALT SURFACE REMOVAL, 1 1/2"

INTERSECTION	QUANTITY BY QUADRANT				TOTAL	(SQ YD)
	NE	NW	SW	SE		
US 52 at Main St	11.7	109.1	316.0	10.4	447.2	
TOTAL QUANTITY					448	

PAY ITEM: 60608600 COMBINATION CONCRETE CURB AND GUTTER, TYPE M-6.06

INTERSECTION	QUANTITY BY QUADRANT				TOTAL	(FOOT)
	NE	NW	SW	SE		
US 52 at Main St	0	0	26	0	26	
TOTAL QUANTITY					26	

PAY ITEM: 28000510 INLET FILTERS

INTERSECTION	QUANTITY BY QUADRANT				TOTAL	(EACH)
	NE	NW	SW	SE		
US 52 at Main St	0	1	1	0	2	
TOTAL QUANTITY					2	

PAY ITEM: 44000200 DRIVEWAY PAVEMENT REMOVAL

INTERSECTION	QUANTITY BY QUADRANT				TOTAL	(SQ YD)
	NE	NW	SW	SE		
US 52 at Main St	0.0	0.0	0.0	5.5	5.5	
TOTAL QUANTITY					6	

PAY ITEM: 60610400 COMBINATION CONCRETE CURB AND GUTTER, TYPE M-6.24

INTERSECTION	QUANTITY BY QUADRANT				TOTAL	(FOOT)
	NE	NW	SW	SE		
US 52 at Main St	0	0	57	0	57	
TOTAL QUANTITY					57	

PAY ITEM: 35101400 AGGREGATE BASE COURSE TYPE B

TON	LOCATION
TOTAL 13	AS DIRECTED BY THE ENGINEER

PAY ITEM: 44000500 COMBINATION CURB AND GUTTER REMOVAL

INTERSECTION	QUANTITY BY QUADRANT				TOTAL	(FOOT)
	NE	NW	SW	SE		
US 52 at Main St	24.0	78.0	56.0	34.2	192.2	
TOTAL QUANTITY					193	

PAY ITEM: 60618210 CONCRETE MEDIAN SURFACE, 4 INCH

INTERSECTION	QUANTITY BY QUADRANT				TOTAL	(SQ FT)
	NE	NW	SW	SE		
US 52 at Main St	0.0	0.0	14.6	0.0	14.6	
TOTAL QUANTITY					15.0	

PAY ITEM: 40600290 BITUMINOUS MATERIALS (TACK COAT)

POUND	LOCATION
TOTAL 204	SEE PAGE 8 FOR SCHEDULE.

PAY ITEM: 44000600 SIDEWALK REMOVAL

INTERSECTION	QUANTITY BY QUADRANT				TOTAL	(SQ FT)
	NE	NW	SW	SE		
US 52 at Main St	222.0	938.0	553.0	327.0	2040.0	
TOTAL QUANTITY					2040.0	

PAY ITEM: 78000400 THERMOPLASTIC PAVEMENT MARKING - LINE 6"

INTERSECTION	QUANTITY BY QUADRANT				TOTAL	(FOOT)
	NE	NW	SW	SE		
US 52 at Main St	74	116	155	87	432	
TOTAL QUANTITY					432	

PAY ITEM: 40600990 TEMPORARY RAMPS

SO_YD	LOCATION
TOTAL 150	AS DIRECTED BY THE ENGINEER

PAY ITEM: 44003100 MEDIAN REMOVAL

INTERSECTION	QUANTITY BY QUADRANT				TOTAL	(SQ FT)
	NE	NW	SW	SE		
US 52 at Main St	0.0	0.0	139.0	0.0	139.0	
TOTAL QUANTITY					139.0	

PAY ITEM: 78000500 THERMOPLASTIC PAVEMENT MARKING - LINE 8"

INTERSECTION	QUANTITY BY QUADRANT				TOTAL	(FOOT)
	NE	NW	SW	SE		
US 52 at Main St	0	0	206	0	206	
TOTAL QUANTITY					206	

PAY ITEM: 40800050 INCIDENTAL HOT-MIX ASPHALT SURFACING

TON	LOCATION
TOTAL 39	SEE PAGE 8 FOR SCHEDULE.

PAY ITEM: 44201341 CLASS C PATCHES, TYPE II, 9 INCH

INTERSECTION	QUANTITY BY QUADRANT				TOTAL	(SQ YD)
	NE	NW	SW	SE		
US 52 at Main St	0.0	0.0	14.0	0.0	14.0	
TOTAL QUANTITY					14.0	

PAY ITEM: 78000600 THERMOPLASTIC PAVEMENT MARKING - LINE 12"

INTERSECTION	QUANTITY BY QUADRANT				TOTAL	(FOOT)
	NE	NW	SW	SE		
US 52 at Main St	0	0	35	0	35	
TOTAL QUANTITY					35	

PAY ITEM: 42400200 PORTLAND CEMENT CONCRETE SIDEWALK 5 INCH

INTERSECTION	QUANTITY BY QUADRANT				TOTAL	(SQ FT)
	NE	NW	SW	SE		
US 52 at Main St	207	1240	648	331	2426	
TOTAL QUANTITY					2426	

SCHEDULE OF QUANTITIES – AMBOY

PAY ITEM: 78000650 THERMOPLASTIC PAVEMENT MARKING - LINE 24"

INTERSECTION	QUANTITY BY QUADRANT				TOTAL
	NE	NW	SW	SE	
US 52 at Main St	18	0	35	0	53
TOTAL QUANTITY					53

PAY ITEM: 72000100 SIGN PANEL - TYPE 1

INTERSECTION	QUANTITY BY QUADRANT				TOTAL	COMMENTS
	NE	NW	SW	SE		
US 52 at Main St	0.0	0.0	12.5	0.0	12.5	2 - R1-1 30"X30" STOP
TOTAL QUANTITY					12.5	

PAY ITEM: 72800100 TELESCOPING STEEL SIGN SUPPORT

INTERSECTION	QUANTITY BY QUADRANT				TOTAL	COMMENTS
	NE	NW	SW	SE		
US 52 at Main St	0.0	0.0	9.5	0.0	9.5	ISLAND MEDIAN STOP SIGN
TOTAL QUANTITY					9.5	

PAY ITEM: 72900200 METAL POST - TYPE B

INTERSECTION	QUANTITY BY QUADRANT				TOTAL	COMMENTS
	NE	NW	SW	SE		
US 52 at Main St	0.0	0.0	13.5	0.0	13.5	STOP SIGN
TOTAL QUANTITY					13.5	

HMA SCHEDULE OF QUANTITIES – AMBOY

PAY ITEM	UNITS	US RT 52 AND MAIN STREET				SUM
		NE	NW	SW	SE	
40600290 BITUMINOUS MATERIALS (TACK COAT)	POUND	6.0	50.0	143.0	5.0	204.0
40800050 HOT-MIX ASPHALT SURFACE REMOVAL, 1 1/2"	SQ YD	11.7	109.1	316.0	10.4	447.2
44000200 INCIDENTAL HOT-MIX ASPHALT SURFACING	TON	1.0	9.4	27.3	0.9	38.6

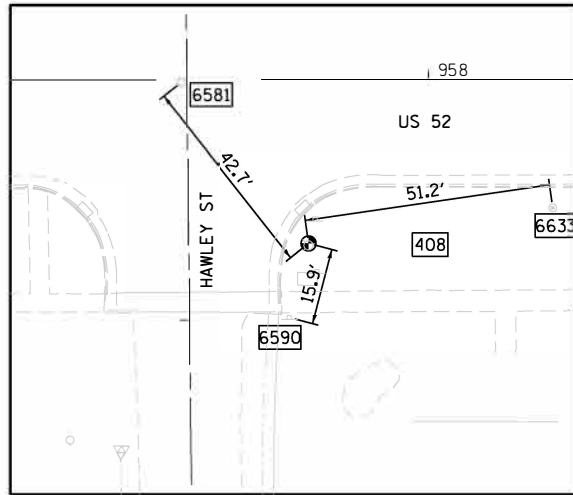
DESIGNED - JMA	REVISED - 11/20/2019
DRAWN - JMA	REVISED -
CHECKED - AJC	REVISED -
DATE - 11/20/2019	REVISED -

**STATE OF ILLINOIS
DEPARTMENT OF TRANSPORTATION**

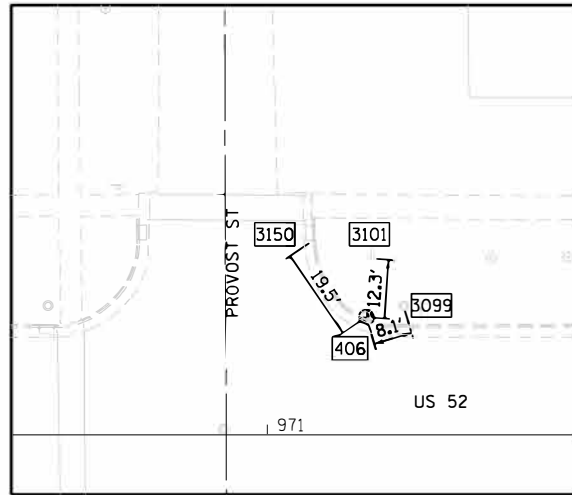
SCHEDULE OF QUANTITIES

SCALE: SHEET 2 OF 2 SHEETS STA. TO STA.

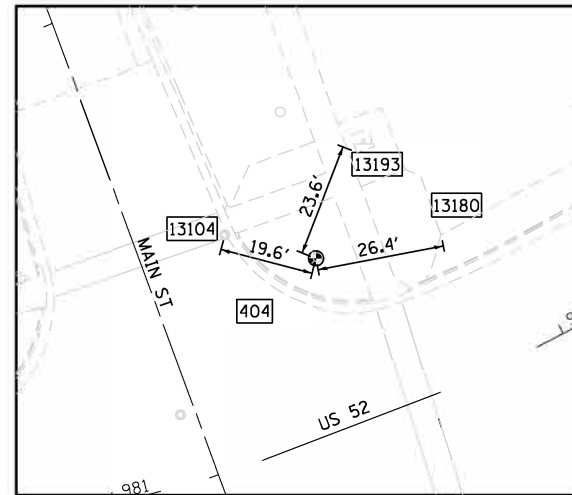
F.A.P. RTE.	SECTION	COUNTY	TOTAL SHEETS	SHEET NO.
694	75M-1	LEE	17	8
CONTRACT NO.			64M29	
ILLINOIS FED. AID PROJECT				



POINT	N	E	DESCRIPTION	DIST	ELEV
408	1,841,764.370	2,525,143.284	"O" IN "OPEN" ON FIRE HYDRANT		751.134
6633	1,841,713.675	2,525,150.682	CTR OF BUFFALO BOX	51.2	750.111
6590	1,841,768.395	2,525,127.899	STOP SIGN POST	15.9	750.496
6581	1,841,790.775	2,525,176.817	CTR OF STREET MH	42.7	749.924



POINT	N	E	DESCRIPTION	DIST	ELEV
406	1,840,418.799	2,525,202.949	RR SPIKE IN POWER POLE		751.471
3101	1,840,417.845	2,525,215.163	TOUCHDOWN PT OF GUY WIRE	12.3	751.321
3099	1,840,411.056	2,525,205.302	CTR OF PARKWAY MH SW CORNER OF INLET FRAME	8.1	751.313
3150	1,840,429.721	2,525,219.046		19.5	749.907



POINT	N	E	DESCRIPTION	DIST	ELEV
404	1,839,398.518	2,525,241.827	"O" IN "OPEN" ON FIRE HYDRANT		748.797
13180	1,839,372.571	2,525,246.800	CONC DRIVEWAY CORNER	26.4	746.986
13193	1,839,390.011	2,525,263.826	FDN CORNER	23.6	747.640
13104	1,839,417.453	2,525,246.759	CTR OF STRUCTURE COVER	19.6	746.846

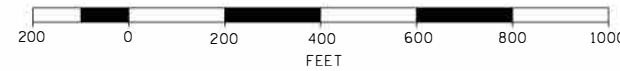
EXIST. CURVE ALIGN52-1
 PI STA. = 981+76.07
 $\Delta = 45^\circ 51' 18''$ (LT)
 $D = 13^\circ 54' 24''$
 $R = 412.00'$
 $T = 174.27'$
 $L = 329.73'$
 $E = 35.34'$
 P.C. STA. = 980+01.80
 N 1839537.5543 E 2525179.2809
 P.T. STA. = 983+31.54
 N 1839242.0233 E 2525304.5985

EXIST. CURVE ALIGN52-2
 PI STA. = 993+52.57
 $\Delta = 11^\circ 19' 13''$ (RT)
 $D = 3^\circ 58' 44''$
 $R = 1,440.00'$
 $T = 142.72'$
 $L = 284.51'$
 $E = 7.06'$
 P.C. STA. = 992+09.85
 N 1838630.8684 E 2525935.4061
 P.T. STA. = 994+94.36
 N 1838414.0644 E 2526118.9213

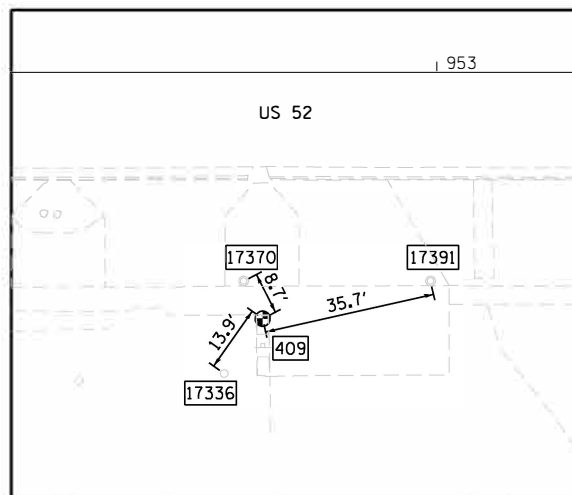
P.O.B. 940+00.00
 N. 1,843,502.4343
 E. 2,525,175.7213

BENCHMARK

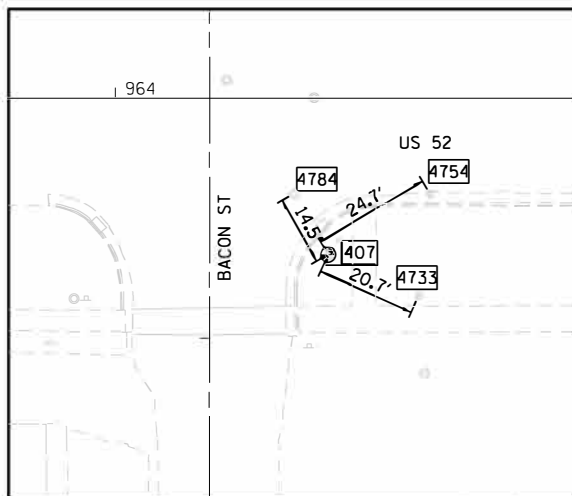
NGS MONUMENT NO. Q48
 VERTICAL BENCHMARK
 N: 1,840,374.1577
 E: 2,523,289.9601
 ELEV. 743.97
 APPROX. 1900' WEST
 ALONG PROVOST ST.



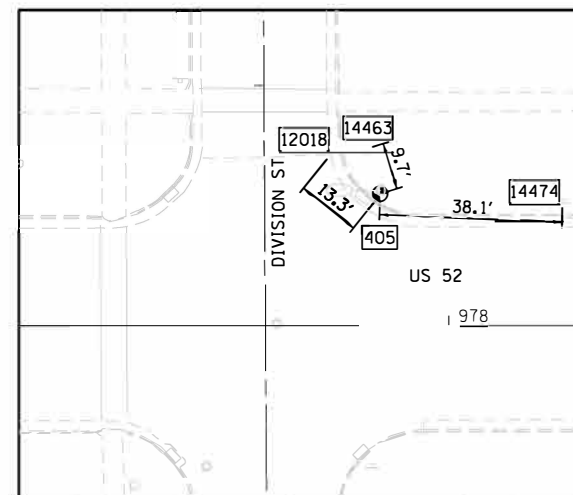
NOTE: ALL INSETS ARE 1"=20'



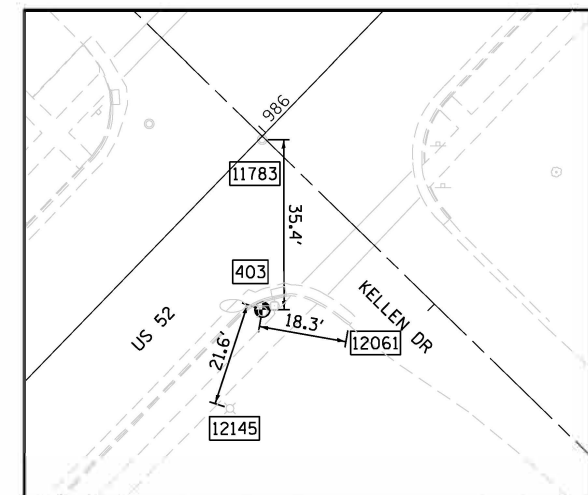
POINT	N	E	DESCRIPTION	DIST	ELEV
409	1,842,275.741	2,525,125.393	CHISELED SQUARE, E SIDE OF SHELL SIGN FDN		755.529
17370	1,842,279.703	2,525,133.181	CTR OF MH LID	8.7	754.767
17336	1,842,283.741	2,525,114.025	CTR OF VALVE BOX	13.9	755.324
17391	1,842,240.879	2,525,133.196	CTR OF MH LID	35.7	754.511



POINT	N	E	DESCRIPTION	DIST	ELEV
407	1,841,095.083	2,525,145.207	"M" IN MUELLER ON FIRE HYDRANT		752.495
4733	1,841,076.210	2,525,136.714	CTR OF BUFFALO BOX	20.7	750.826
4754	1,841,073.835	2,525,157.893	CTR OF VALVE BOX COVER	24.7	750.151
4784	1,841,102.223	2,525,157.881	CTR OF STREET MH	14.5	750.509



POINT	N	E	DESCRIPTION	DIST	ELEV
405	1,839,753.703	2,525,206.581	RR SPIKE IN LIGHT POLE		746.925
14474	1,839,715.642	2,525,205.000	STREET SIGN POST	38.1	746.244
14463	1,839,756.516	2,525,215.862	CTR OF PARKWAY MH CORNER OF DRIVEWAY CONC	9.7	745.932
12018	1,839,764.111	2,525,214.749		13.2	745.507



POINT	N	E	DESCRIPTION	DIST	ELEV
403	1,839,055.903	2,525,460.612	"O" IN "OPEN" ON FIRE HYDRANT		741.257
11783	1,839,055.949	2,525,495.965	CTR OF ROADWAY MH LID	35.4	739.904
12145	1,839,062.646	2,525,440.067	LIGHT POLE	21.6	740.240
12061	1,839,037.908	2,525,457.450	BACK CORNER OF CURB	18.3	739.737



DESIGNED - JMA
 DRAWN - JMA
 CHECKED - MP
 DATE - 09/19/2019

REVISED -
 REVISED -
 REVISED -
 REVISED -

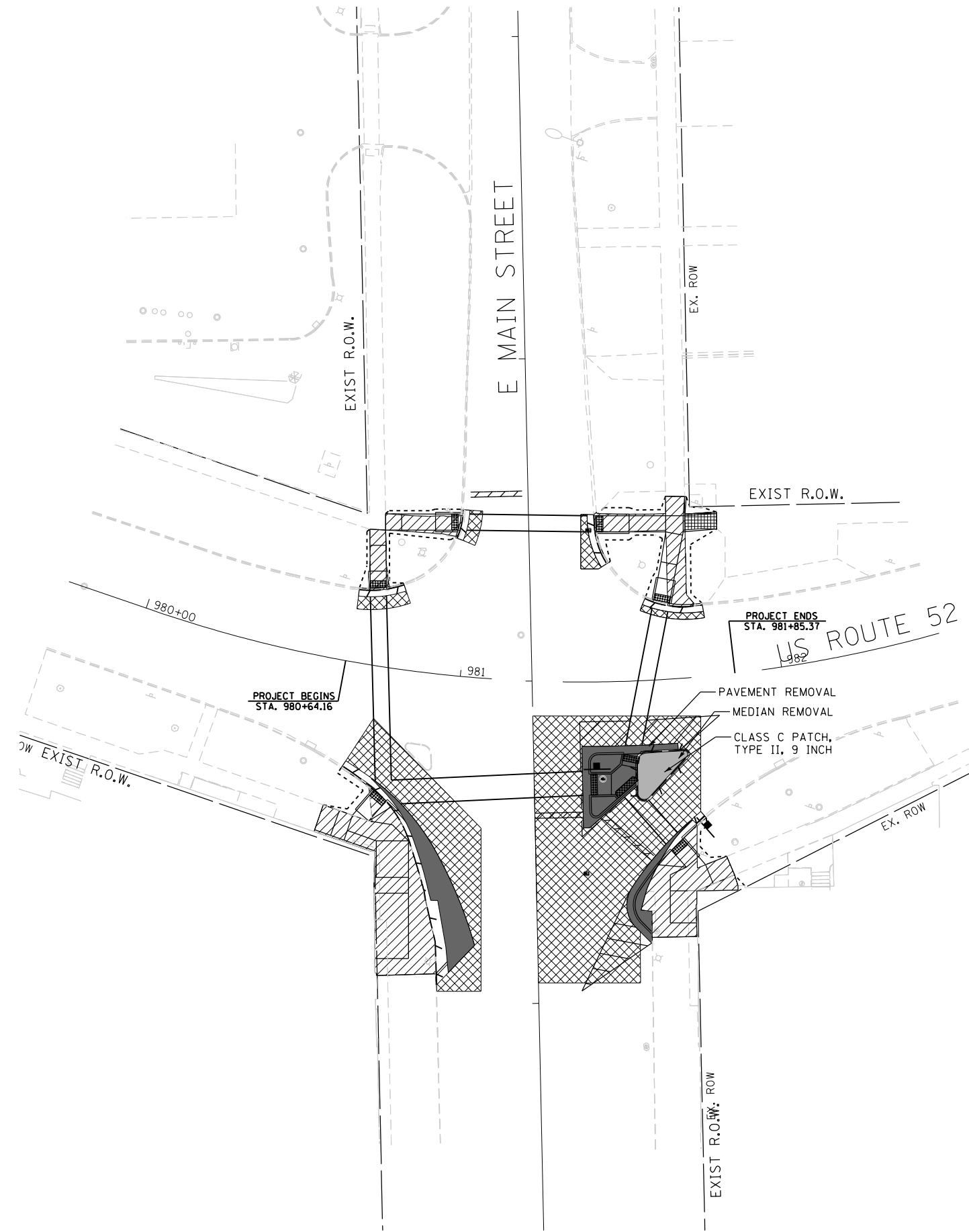
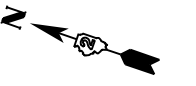
STATE OF ILLINOIS
 DEPARTMENT OF TRANSPORTATION

ADA RAMP DESIGN - AMBOY
 ALIGNMENTS, TIES AND BENCHMARKS

SCALE: 1" = 200' SHEET OF SHEETS STA. TO STA.

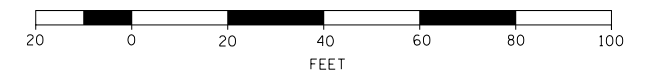
F.A. RTE.	SECTION	COUNTY	TOTAL SHEETS	SHEET NO.
	(75)	LEE	17	9

CONTRACT NO. 64M29
 ILLINOIS FED. AID PROJECT



LEGEND

- SIDEWALK REMOVAL
- HMA SURFACE REMOVAL
- CURB AND GUTTER REMOVAL
- MEDIAN REMOVAL
- PAVEMENT REMOVAL, 13.5"
- DRIVEWAY REMOVAL
- PROPOSED GRADING LIMITS



DESIGNED - JMA	REVISED -
DRAWN - JMA	REVISED -
CHECKED - MAP	REVISED -
DATE - 09/19/2019	REVISED -

**STATE OF ILLINOIS
DEPARTMENT OF TRANSPORTATION**

**ADA RAMP DESIGN - AMBOY
US ROUTE 52 AT MAIN STREET**

SCALE: 1" = 20' SHEET 1 OF 1 SHEETS STA. 979+75 TO STA. 982+50

F.A. RTÉ.	SECTION	COUNTY	TOTAL SHEETS	SHEET NO.
	(75)	LEE	17	10
CONTRACT NO.			64M29	
ILLINOIS FED. AID PROJECT				

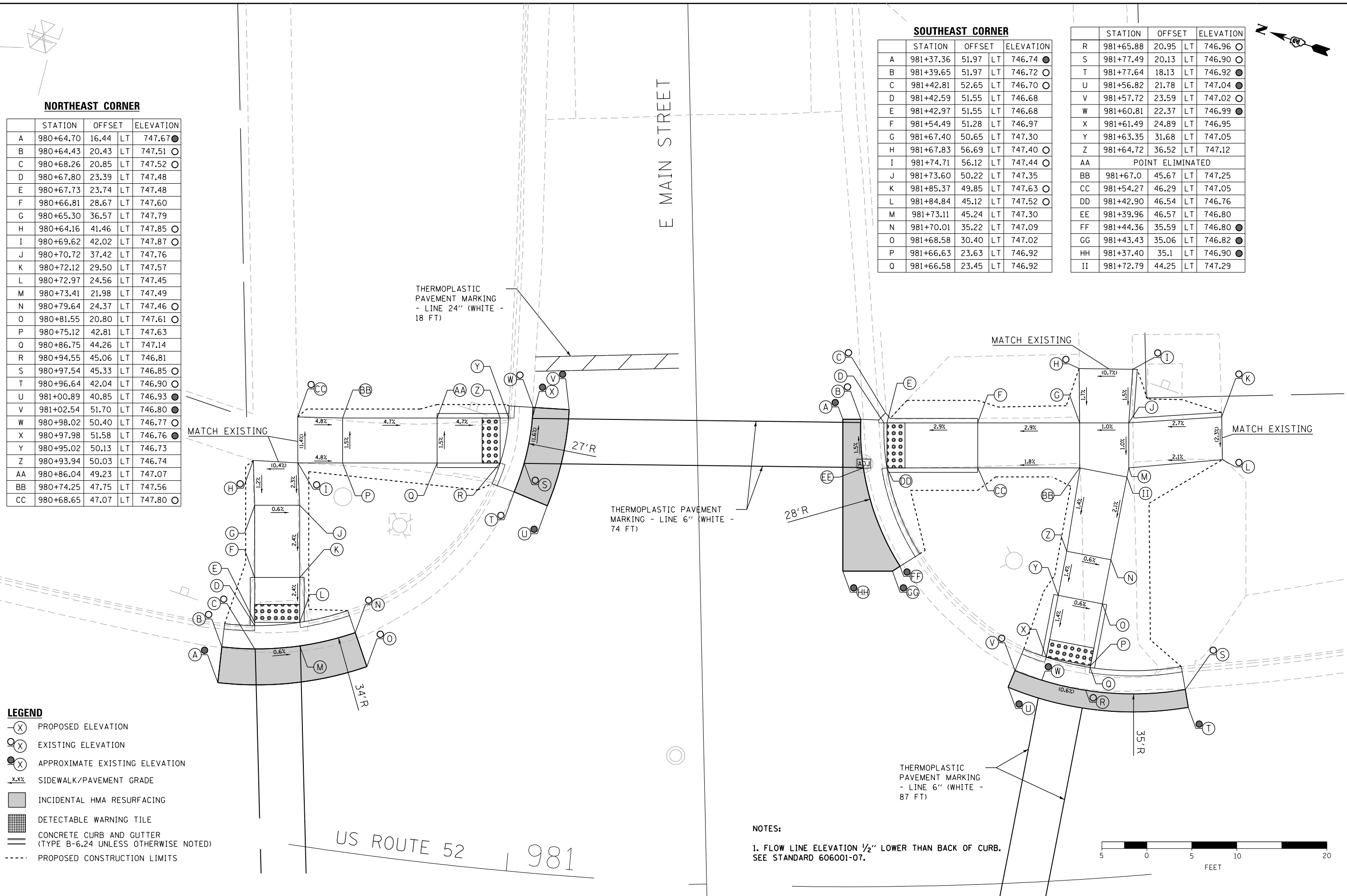
NORTHEAST CORNER

	STATION	OFFSET	LT	ELEVATION
A	980+64.70	16.44	LT	747.67 ●
B	980+64.43	20.43	LT	747.51 ○
C	980+68.26	20.85	LT	747.52 ○
D	980+67.80	23.39	LT	747.48
E	980+67.73	23.74	LT	747.48
F	980+66.81	28.67	LT	747.60
G	980+65.30	36.57	LT	747.79
H	980+64.16	41.46	LT	747.85 ○
I	980+69.62	42.02	LT	747.87 ○
J	980+70.72	37.42	LT	747.76
K	980+72.12	29.50	LT	747.57
L	980+72.97	24.56	LT	747.45
M	980+73.41	21.98	LT	747.49
N	980+79.64	24.37	LT	747.46 ○
O	980+81.55	20.80	LT	747.61 ○
P	980+75.12	42.81	LT	747.63
Q	980+86.75	44.26	LT	747.14
R	980+94.55	45.06	LT	746.81
S	980+97.54	45.33	LT	746.85 ○
T	980+96.64	42.04	LT	746.90 ○
U	981+00.89	40.85	LT	746.93 ●
V	981+02.54	51.70	LT	746.80 ●
W	980+98.02	50.40	LT	746.77 ○
X	980+97.98	51.58	LT	746.76 ●
Y	980+95.02	50.13	LT	746.73
Z	980+93.94	50.03	LT	746.74
AA	980+86.04	49.23	LT	747.07
BB	980+74.25	47.75	LT	747.56
CC	980+68.65	47.07	LT	747.80 ○

SOUTHEAST CORNER

	STATION	OFFSET	LT	ELEVATION
A	981+37.36	51.97	LT	746.74 ●
B	981+39.65	51.97	LT	746.72 ○
C	981+42.81	52.65	LT	746.70 ○
D	981+42.59	51.55	LT	746.68
E	981+42.97	51.55	LT	746.68
F	981+54.49	51.28	LT	746.97
G	981+67.40	50.65	LT	747.30
H	981+67.83	56.69	LT	747.40 ○
I	981+74.71	56.12	LT	747.44 ○
J	981+73.60	50.22	LT	747.35
K	981+85.37	49.85	LT	747.63 ○
L	981+84.84	45.12	LT	747.52 ○
M	981+73.11	45.24	LT	747.30
N	981+70.01	35.22	LT	747.09
O	981+68.58	30.40	LT	747.02
P	981+66.63	23.63	LT	746.92
Q	981+66.58	23.45	LT	746.92

	STATION	OFFSET	LT	ELEVATION
R	981+65.88	20.95	LT	746.96 ○
S	981+77.49	20.13	LT	746.90 ○
T	981+77.64	18.13	LT	746.92 ●
U	981+56.82	21.78	LT	747.04 ●
V	981+57.72	23.59	LT	747.02 ○
W	981+60.81	22.37	LT	746.99 ●
X	981+61.49	24.89	LT	746.95
Y	981+63.35	31.68	LT	747.05
Z	981+64.72	36.52	LT	747.12
AA	POINT ELIMINATED			
BB	981+67.0	45.67	LT	747.25
CC	981+54.27	46.29	LT	747.05
DD	981+42.90	46.54	LT	746.76
EE	981+39.96	46.57	LT	746.80
FF	981+44.36	35.59	LT	746.80 ●
GG	981+43.43	35.06	LT	746.82 ●
HH	981+37.40	35.1	LT	746.90 ●
II	981+72.79	44.25	LT	747.29



LEGEND

- (X) PROPOSED ELEVATION
- (O) EXISTING ELEVATION
- (X) APPROXIMATE EXISTING ELEVATION
- x.x.x% SIDEWALK/PAVEMENT GRADE
- ▭ INCIDENTAL HMA RESURFACING
- ▭ DETECTABLE WARNING TILE
- ▭ CONCRETE CURB AND GUTTER (TYPE B-6.24 UNLESS OTHERWISE NOTED)
- PROPOSED CONSTRUCTION LIMITS

NOTES:

1. FLOW LINE ELEVATION 1/2" LOWER THAN BACK OF CURB. SEE STANDARD 606001-07.



DESIGNED - JMA	REVISED -
DRAWN - JMA	REVISED -
CHECKED - MAP	REVISED -
DATE - 09/19/2019	REVISED -

**STATE OF ILLINOIS
DEPARTMENT OF TRANSPORTATION**

**ADA RAMP DESIGN - AMBOY
US ROUTE 52 AT MAIN STREET (EAST RAMPS)**

SCALE: 1" = 5' SHEET 1 OF 3 SHEETS STA. TO STA.

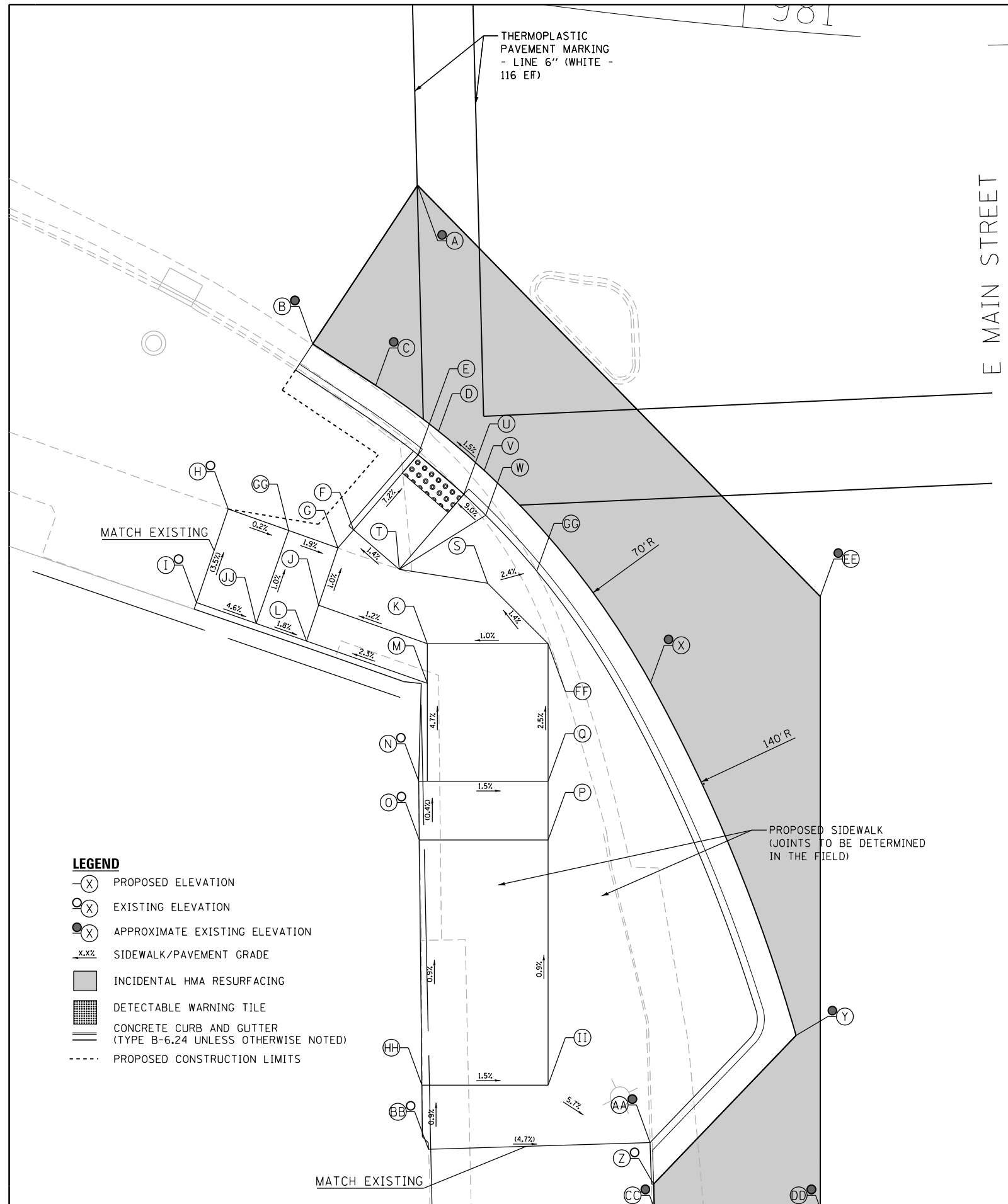
F.A. RTE.	SECTION	COUNTY	TOTAL SHEETS	SHEET NO.
	(75)	LEE	17	11
CONTRACT NO. 64M29			ILLINOIS FED. AID PROJECT	

US ROUTE 52

E MAIN STREET

NORTHWEST CORNER

	STATION	OFFSET	ELEVATION
A	980+75.39	16.27 RT	748.75 ●
B	980+69.27	30.61 RT	748.67 ●
C	980+74.55	33.17 RT	748.73 ●
D	980+79.80	36.14 RT	748.87
E	980+78.53	38.32 RT	748.83
F	980+74.57	45.25 RT	749.42
G	980+73.63	46.93 RT	749.44
H	980+65.11	45.26 RT	749.53 ○
I	980+64.02	53.35 RT	749.84 ○
J	980+72.89	51.86 RT	749.49
K	980+81.18	53.69 RT	749.60
L	980+72.43	54.95 RT	749.52
M	980+81.58	56.94 RT	749.76
N	980+81.93	65.06 RT	750.14 ○
O	980+82.53	69.87 RT	750.16 ○
P	980+91.58	68.56 RT	750.00
Q	980+91.12	63.72 RT	749.98
R	POINT ELIMINATED		
S	980+85.0	48.07 RT	749.60
T	980+78.37	47.91 RT	749.49
U	980+82.37	41.02 RT	748.90
V	980+83.66	38.85 RT	748.94 ●
W	980+84.20	42.50 RT	749.13
X	980+97.73	54.73 RT	749.47 ●
Y	981+10.07	82.81 RT	749.63 ●
Z	981+01.22	95.99 RT	749.33 ○
AA	981+00.73	92.60 RT	749.63 ●
BB	980+85.94	95.14 RT	750.40 ○
CC	981+01.40	97.98 RT	749.35 ●
DD	981+12.47	96.94 RT	749.57 ●
EE	981+09.65	46.45 RT	749.42 ●
FF	980+89.97	52.42 RT	749.70
GG	980+88.50	46.57 RT	749.50
HH	980+84.95	89.95 RT	750.34
II	980+93.47	88.72 RT	750.18
JJ	980+68.59	54.19 RT	749.60



- LEGEND**
- ⊗ PROPOSED ELEVATION
 - ⊗ EXISTING ELEVATION
 - ⊗ APPROXIMATE EXISTING ELEVATION
 - x.x% SIDEWALK/PAVEMENT GRADE
 - INCIDENTAL HMA RESURFACING
 - ▨ DETECTABLE WARNING TILE
 - ▬ CONCRETE CURB AND GUTTER (TYPE B-6.24 UNLESS OTHERWISE NOTED)
 - - - PROPOSED CONSTRUCTION LIMITS

PROPOSED SIDEWALK (JOINTS TO BE DETERMINED IN THE FIELD)

NOTES:
 1. FLOW LINE ELEVATION 1/2" LOWER THAN BACK OF CURB. SEE STANDARD 606001-07.



DESIGNED - JMA	REVISED -
DRAWN - JMA	REVISED -
CHECKED - MAP	REVISED -
DATE - 09/19/2019	REVISED -

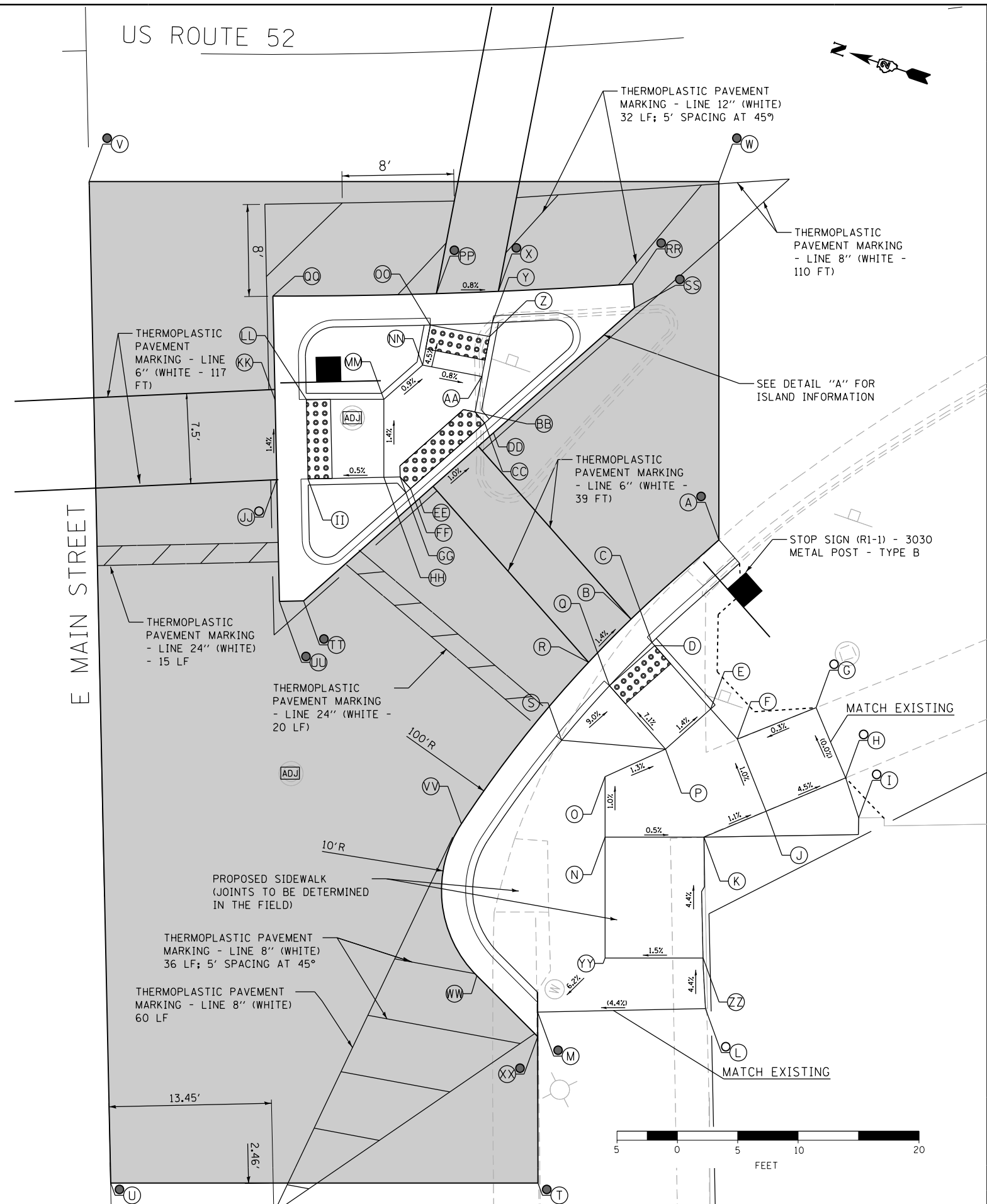
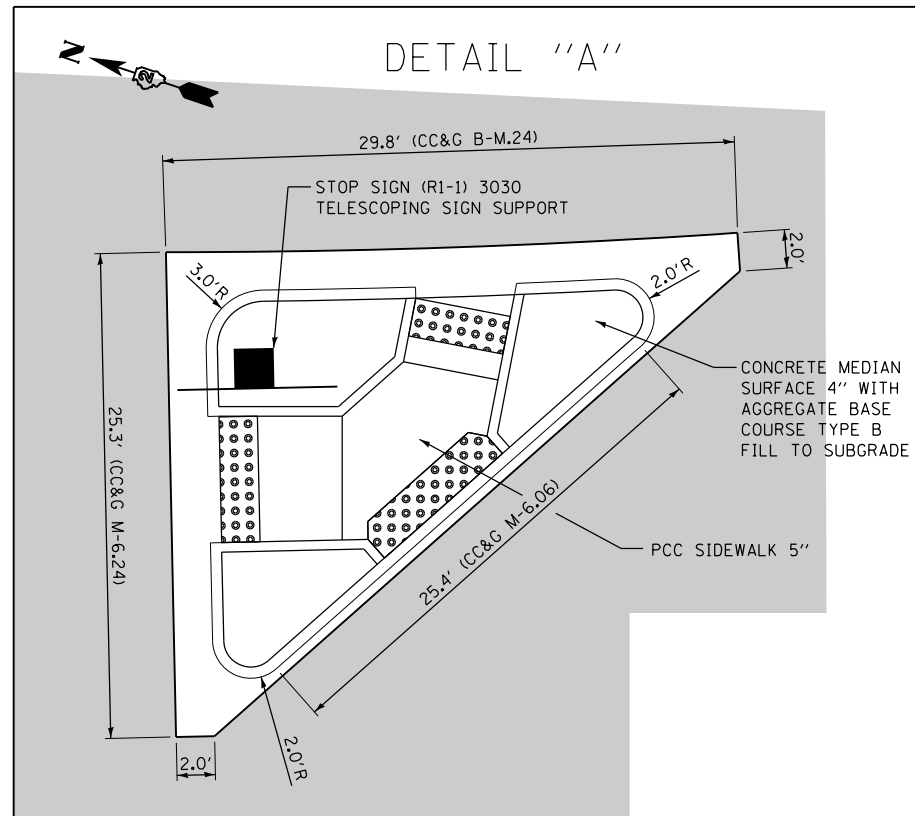
STATE OF ILLINOIS
 DEPARTMENT OF TRANSPORTATION

ADA RAMP DESIGN - AMBOY
 US ROUTE 52 AT MAIN STREET (NORTHWEST RAMPS)
 SCALE: 1" = 5' SHEET 2 OF 3 SHEETS STA. TO STA.

F.A. RTE.	SECTION	COUNTY	TOTAL SHEETS	SHEET NO.
	(75)	LEE	17	12
CONTRACT NO. 64M29			ILLINOIS FED. AID PROJECT	

SOUTHWEST CORNER

	STATION	OFFSET		ELEVATION
A	981+71.35	41.65	RT	748.31 ●
B	981+64.39	47.66	RT	748.82
C	981+65.80	49.70	RT	748.78
D	981+66.0	49.99	RT	748.78
E	981+69.76	55.55	RT	749.28
F	981+71.52	58.20	RT	749.31
G	981+77.42	56.19	RT	749.05 ○
H	981+79.06	62.21	RT	749.05 ○
I	981+79.70	65.60	RT	749.09 ○
J	981+73.14	64.31	RT	749.37 ○
K	981+68.58	66.08	RT	749.43
L	981+67.80	80.22	RT	750.06 ○
M	981+56.19	79.72	RT	749.45 ●
N	981+61.53	65.54	RT	749.47
O	981+61.78	60.55	RT	749.42
P	981+66.27	58.58	RT	749.35
Q	981+62.49	53.05	RT	748.85
R	981+61.06	51.02	RT	748.89
S	981+58.79	57.34	RT	749.40
T	981+55.69	93.84	RT	749.29 ●
U	981+26.87	93.56	RT	749.59 ●
V	981+22.95	10.81	RT	748.56 ●
W	981+73.68	12.11	RT	748.82 ●
X	981+55.58	20.00	RT	748.85 ●
Y	981+55.0	22.58	RT	748.89
Z	981+54.75	23.70	RT	748.92
AA	981+54.02	26.98	RT	749.07
BB	981+53.39	29.89	RT	749.12
CC	981+54.11	30.83	RT	749.11
DD	981+54.74	31.67	RT	749.07
EE	981+48.90	36.90	RT	749.15
FF	981+48.26	36.07	RT	749.19
GG	981+47.50	35.08	RT	749.20
HH	981+46.25	35.08	RT	749.21
II	981+40.46	35.14	RT	749.19
JJ	981+38.08	35.18	RT	749.15
KK	981+37.98	30.18	RT	749.08
LL	981+40.39	30.14	RT	749.12
MM	981+46.37	28.63	RT	749.12
NN	981+49.44	25.87	RT	749.08
OO	981+50.13	22.58	RT	748.93
PP	981+50.68	20.00	RT	748.89 ●
QQ	981+37.79	20.00	RT	749.00
RR	981+66.22	20.00	RT	748.60 ●
SS	981+66.22	22.00	RT	748.64 ●
TT	981+40.09	45.22	RT	749.28 ●
UU	981+38.29	45.26	RT	749.30 ●
VV	981+51.33	63.91	RT	749.05
WW	981+52.07	76.51	RT	749.18
XX	981+56.11	81.74	RT	749.30 ●
YY	981+61.05	75.52	RT	749.89
ZZ	981+67.89	76.04	RT	750.01



- LEGEND**
- (X) PROPOSED ELEVATION
 - (X) EXISTING ELEVATION
 - (X) APPROXIMATE EXISTING ELEVATION
 - x.x% SIDEWALK/PAVEMENT GRADE
 - INCIDENTAL HMA RESURFACING
 - ▨ DETECTABLE WARNING TILE
 - ▬ CONCRETE CURB AND GUTTER (TYPE B-6.24 UNLESS OTHERWISE NOTED)
 - PROPOSED CONSTRUCTION LIMITS

NOTES:
 1. FLOW LINE ELEVATION 1/2" LOWER THAN BACK OF CURB. SEE STANDARD 606001-07.



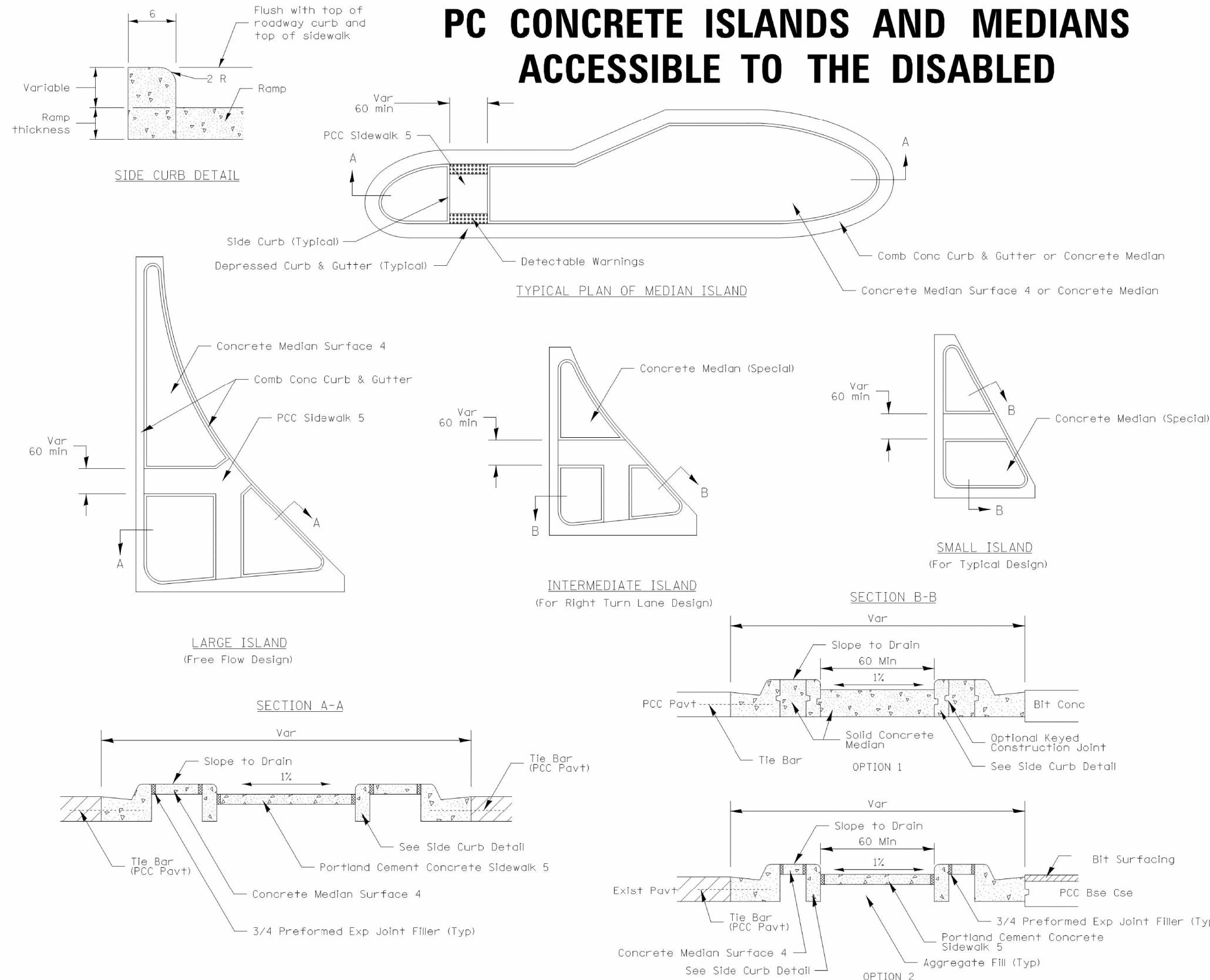
DESIGNED - JMA	REVISED -
DRAWN - JMA	REVISED -
CHECKED - MAP	REVISED -
DATE - 09/19/2019	REVISED -

STATE OF ILLINOIS
DEPARTMENT OF TRANSPORTATION

ADA RAMP DESIGN - AMBOY
US ROUTE 52 AT MAIN STREET (SOUTHWEST RAMPS)
 SCALE: 1" = 5' SHEET 3 OF 3 SHEETS STA. TO STA.

F.A. RTE.	SECTION	COUNTY	TOTAL SHEETS	SHEET NO.
	(75)	LEE	17	13
CONTRACT NO. 64M29			ILLINOIS FED. AID PROJECT	

PC CONCRETE ISLANDS AND MEDIANS ACCESSIBLE TO THE DISABLED



General Notes:
See Standard 606301 and plan sheets for station & offsets, radii, dimensions, and details not shown.

See Standard 424031 for sidewalk details not shown.

The sidewalk should drain to the low side of the island. If necessary the sidewalk shall be sloped to drain at 1%.

See the plan general notes for the type of curb & gutter to be used on islands.

The sidewalk should not be closer than 36 from the corner of the island.

Keyed longitudinal construction joints shall be constructed without tie bars.

Medians and large islands shall consist of PCC Sidewalk 5, Concrete Median Surface 4, and Combination Concrete Curb & Gutter, Type M or B of the size specified. Median Island can also be solid concrete medians.

Locations, layouts, and widths of the flush sidewalk area, shall be determined by the designer and shown on the plans.

The intermediate and small islands will be measured for payment from E.O.P. to E.O.P. using either option 1 or option 2, as specified in the plans, and will be paid for at the contract unit price per 50 FT for CONCRETE MEDIAN (SPECIAL) which shall include the combination curb & gutter, sidewalk, aggregate fill, concrete median surface, and solid concrete median.

Omit detectable warnings when distance between back of curbs is less than 6'.

ALL DIMENSIONS ARE IN INCHES UNLESS OTHERWISE NOTED.

FILE NAME = District 2 Standard	USER NAME = IDOT/District 2	DESIGNED -	REVISED - 1-05-16
		DRAWN -	REVISED - 6-27-14
		CHECKED -	REVISED - 8-27-13
		DATE -	REVISED - 10-09-12

STATE OF ILLINOIS
DEPARTMENT OF TRANSPORTATION

REGION 2 / DISTRICT 2 STANDARD

F.A. RTE.	SECTION	COUNTY	TOTAL SHEETS	SHEET NO.
CONTRACT NO.				

PC CONCRETE ISLANDS AND MEDIANS ACCESSIBLE TO THE DISABLED 4.1



DESIGNED -	REVISED -
DRAWN -	REVISED -
CHECKED -	REVISED -
DATE -	REVISED -

STATE OF ILLINOIS
DEPARTMENT OF TRANSPORTATION

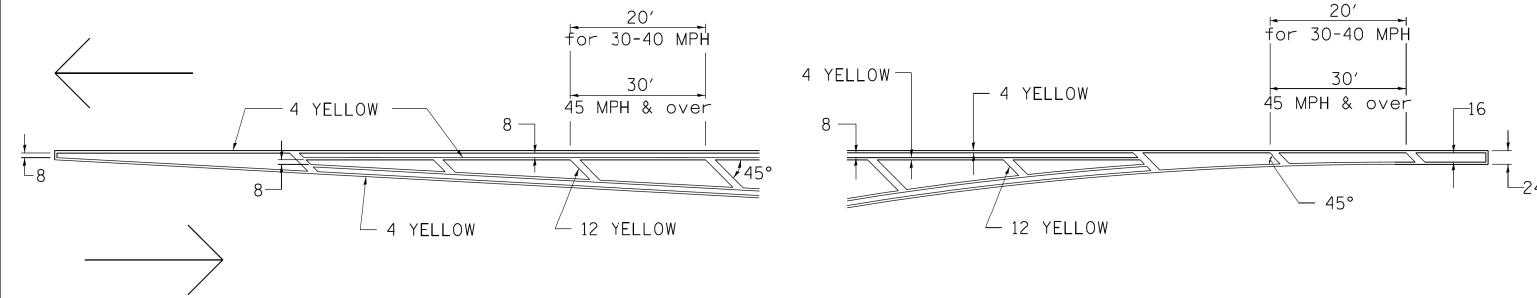
DISTRICT 2 STANDARDS

SCALE:	SHEET NO.	OF SHEETS	STA.	TO STA.
	1	4		

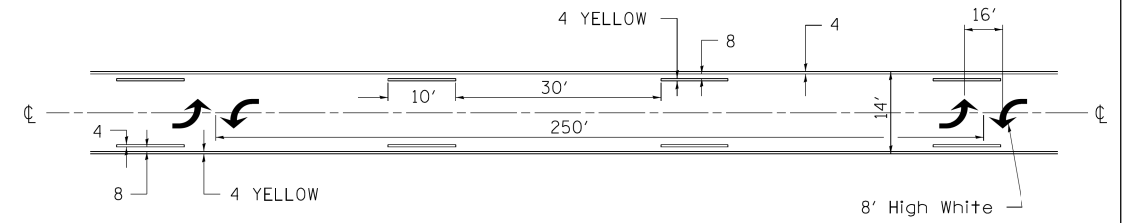
F.A. RTE.	SECTION	COUNTY	TOTAL SHEETS	SHEET NO.
694	75	LEE	17	14
CONTRACT NO.			64M29	

TYPICAL PAVEMENT MARKINGS

TYPICAL PAVEMENT MARKING FOR FLUSH MEDIAN AT LEFT TURN LANE

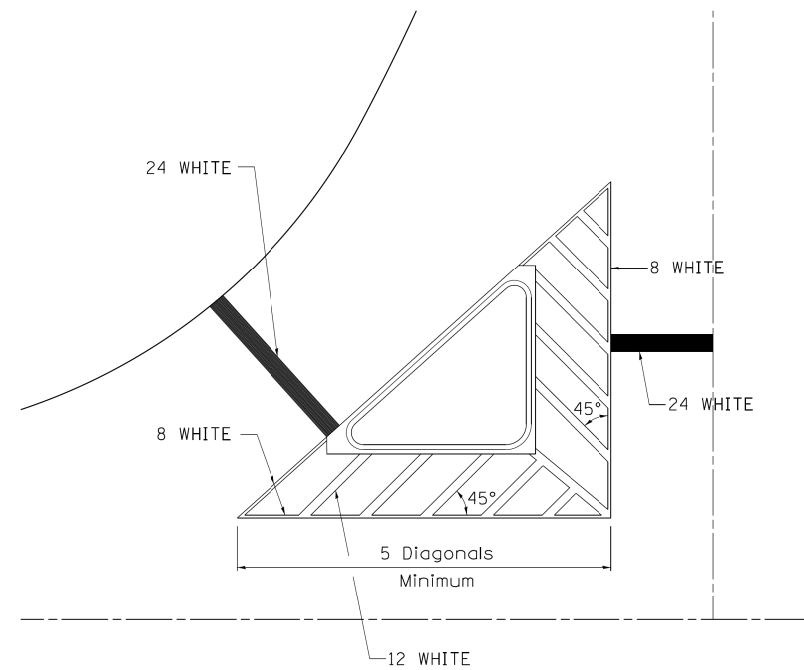


MEDIAN PAVEMENT MARKING



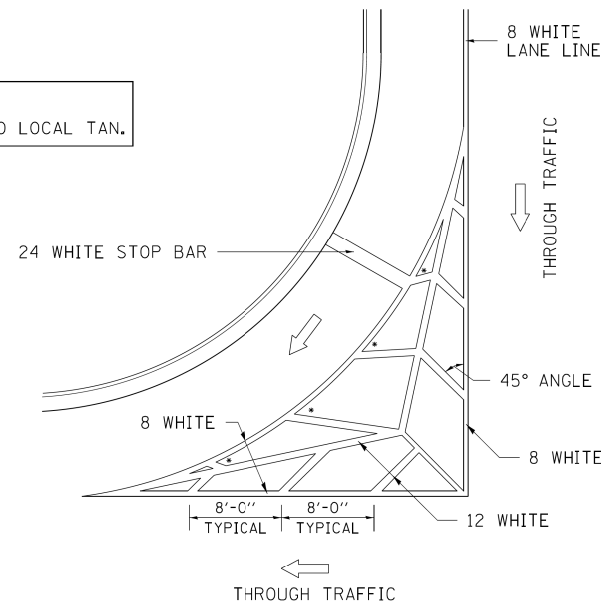
•• ALL DIMENSIONS ARE IN INCHES UNLESS OTHERWISE NOTED.

TYPICAL ISLAND OFFSET SHOULDER WIDTH



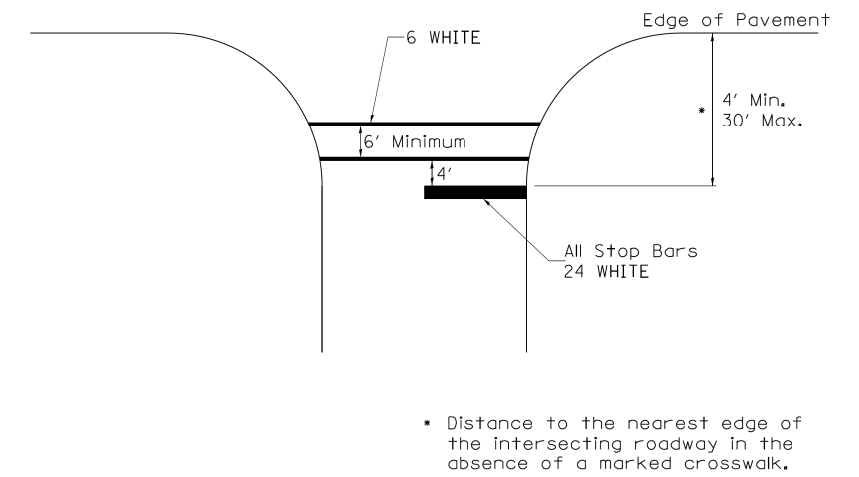
TYPICAL MARKING FOR PAINTED ISLANDS

NOTE:
* 45° TO LOCAL TAN.



STANDARD CROSSWALK MARKING

See Schedules for Locations



• Distance to the nearest edge of the intersecting roadway in the absence of a marked crosswalk.

FILE NAME = District 2 Standard	USER NAME = IDOT/District 2	DESIGNED - DRAWN -	REVISED - REVISED -
		CHECKED -	REVISED -
		DATE -	REVISED -

STATE OF ILLINOIS
DEPARTMENT OF TRANSPORTATION

REGION 2 / DISTRICT 2 STANDARD

F.A. RTE.	SECTION	COUNTY	TOTAL SHEETS	SHEET NO.

SCALE: SHEET NO. OF SHEETS STA. TO STA.

CONTRACT NO.

TYPICAL PAVEMENT MARKINGS SHEET 1 OF 3 41.1



DESIGNED - JMA	REVISED -
DRAWN - JMA	REVISED -
CHECKED - MAP	REVISED -
DATE - 09/19/2019	REVISED -

STATE OF ILLINOIS
DEPARTMENT OF TRANSPORTATION

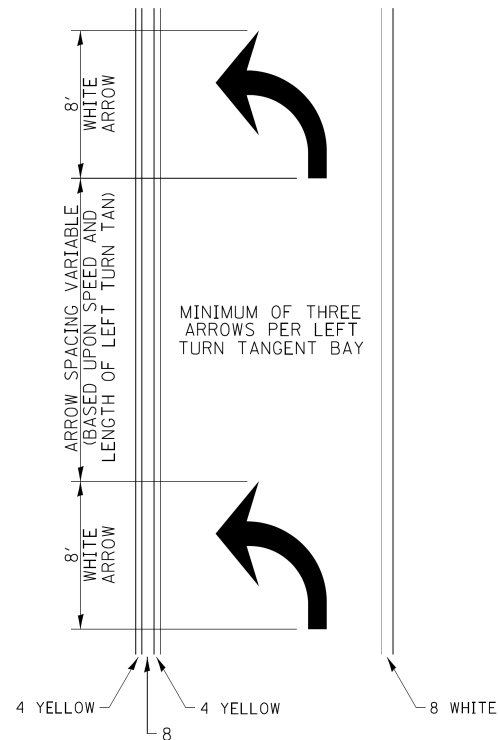
DISTRICT 2 STANDARDS

SCALE: SHEET 2 OF 4 SHEETS STA. TO STA.

F.A. RTE.	SECTION	COUNTY	TOTAL SHEETS	SHEET NO.
694	75	LEE	17	15
CONTRACT NO.			64M29	
ILLINOIS FED. AID PROJECT				

TYPICAL PAVEMENT MARKINGS

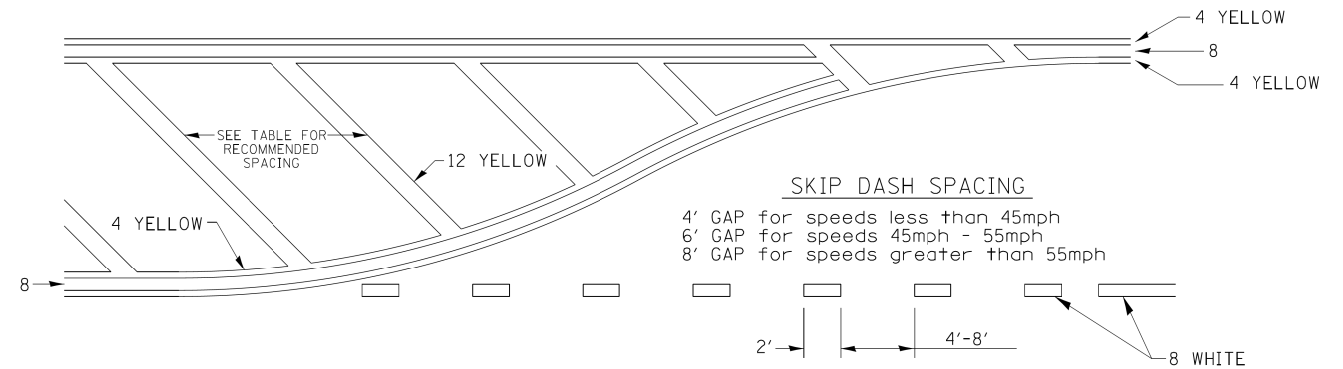
ARROW LAYOUT



- ◀ ONE-WAY AMBER MARKER
- ◁ ONE-WAY CRYSTAL MARKER
- ◆ TWO-WAY AMBER MARKER

ALL DIMENSIONS ARE IN INCHES UNLESS OTHERWISE NOTED.

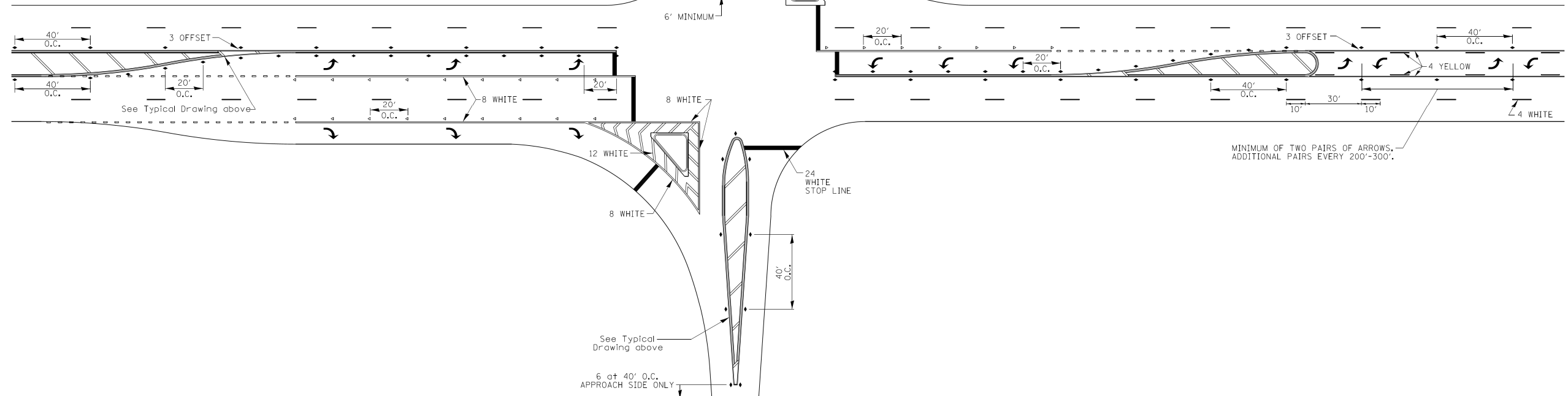
TYPICAL PAVEMENT MARKING FOR FLUSH MEDIAN



RECOMMENDED SPACING BETWEEN DIAGONALS (IN FEET)

Speed Limit Range	Continuous Median Area	Intersection Channelization	Objects (Islands)
less than 30MPH	50'	15'	10'
30-40MPH	75'	20'	15'
45MPH & over	75'	30'	20'

NOTE: if the spacing recommended in the Table does not permit at least five diagonal lines in the area being marked, the spacing from the next lowest speed range should be used. The recommended spacing is measured parallel to the pavement center line.



FILE NAME = District 2 Standard	USER NAME = IDOT/District 2	DESIGNED -	REVISED - 6-27-14
		DRAWN -	REVISED - 3-05-12
	PLOT SCALE = 1:8000' / in.	CHECKED -	REVISED -
	PLOT DATE = 8/4/2017	DATE -	REVISED -

STATE OF ILLINOIS
DEPARTMENT OF TRANSPORTATION

REGION 2 / DISTRICT 2 STANDARD

F.A. RTE.	SECTION	COUNTY	TOTAL SHEETS	SHEET NO.
CONTRACT NO.				
ILLINOIS FED. AID PROJECT				

TYPICAL PAVEMENT MARKINGS SHEET 2 OF 3 41.1



DESIGNED - JMA	REVISED -
DRAWN - JMA	REVISED -
CHECKED - MAP	REVISED -
DATE - 09/19/2019	REVISED -

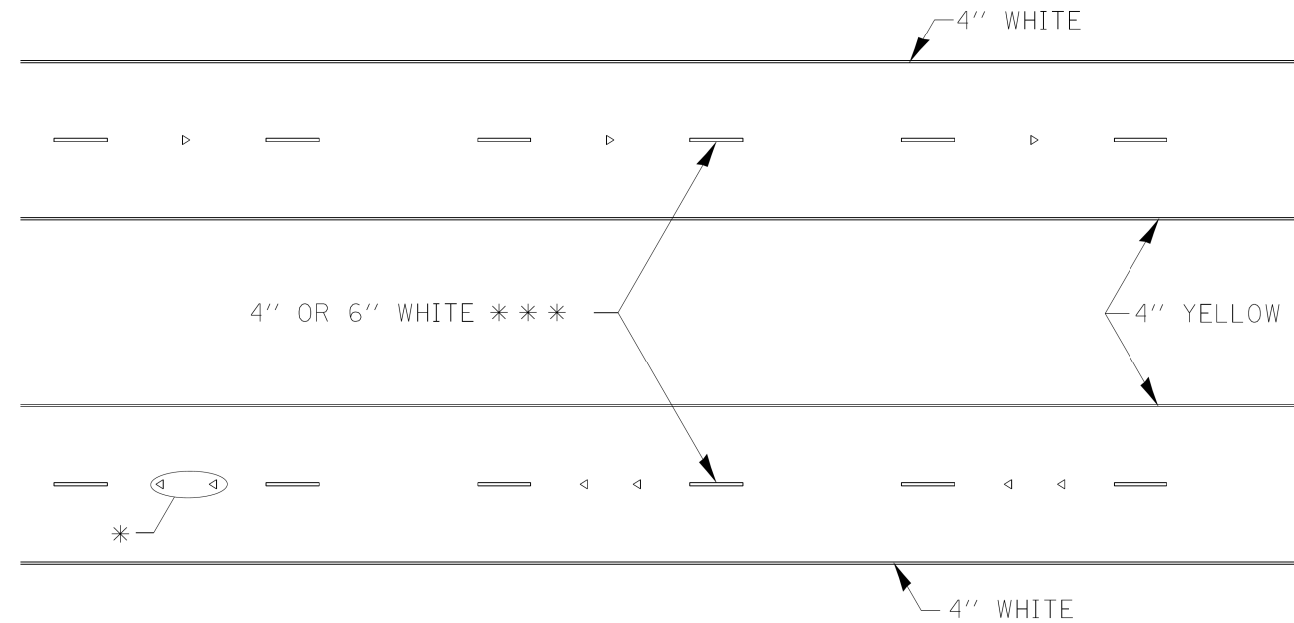
STATE OF ILLINOIS
DEPARTMENT OF TRANSPORTATION

DISTRICT 2 STANDARDS

SCALE:	SHEET 3 OF 4 SHEETS	STA.	TO STA.
--------	---------------------	------	---------

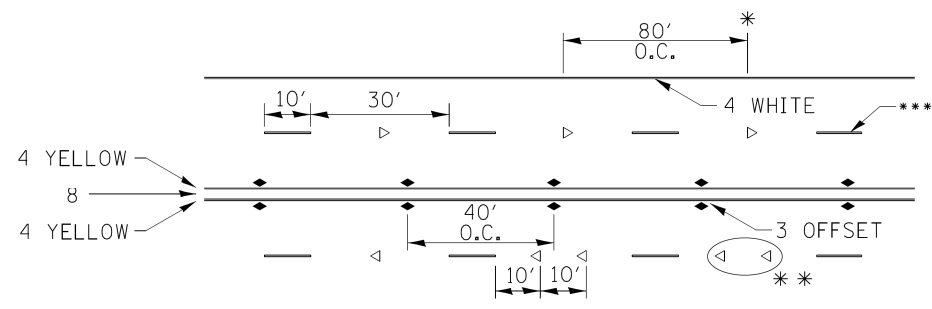
F.A. RTE.	SECTION	COUNTY	TOTAL SHEETS	SHEET NO.
694	75	LEE	17	16
CONTRACT NO. 64M29				
ILLINOIS FED. AID PROJECT				

TYPICAL PAVEMENT MARKINGS



* SEE HIGHWAY STANDARD 781001 FOR SPACING DETAILS.
USE DOUBLE MARKERS WHEN ADT > 20,000.

MULTI-LANE / DIVIDED



* REDUCE TO 40' O.C. ON CURVES WHERE ADVISORY SPEEDS ARE 10 MPH LOWER THAN POSTED SPEEDS.

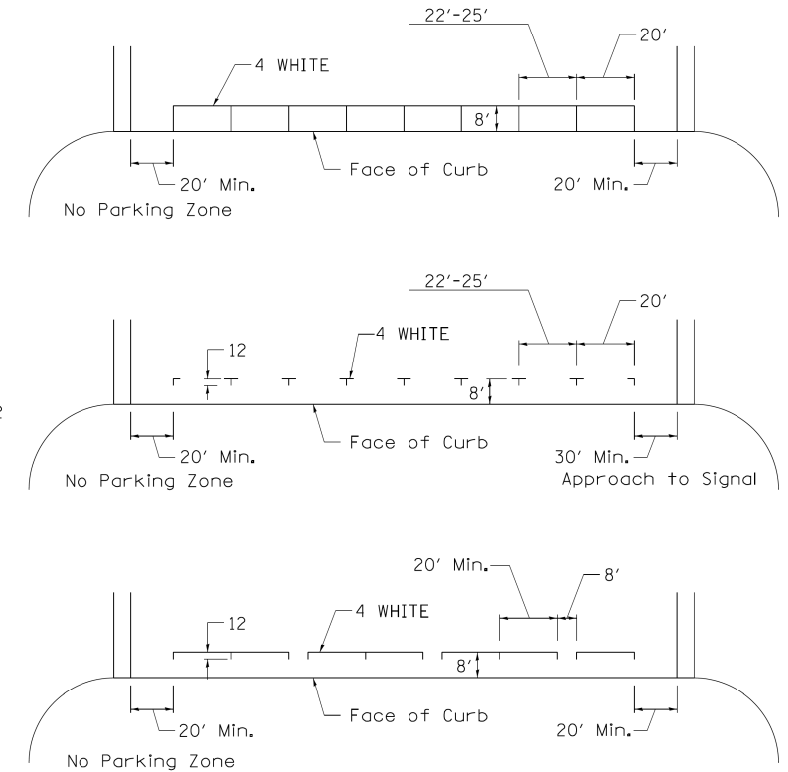
** USE DOUBLE MARKERS WHEN ADT ≥ 20,000

*** CENTERLINE SKIP DASH PAVEMENT MARKING SPEED LIMIT LESS THAN 40 MPH USE 4" LINE. SPEED LIMIT 40 MPH AND OVER USE 6" LINE.

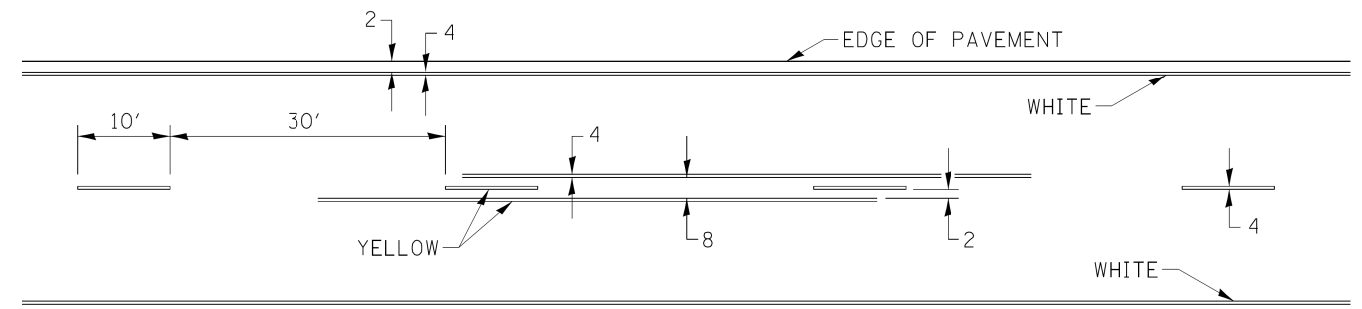
MULTI-LANE / UNDIVIDED & ONE WAY

(FOR MULTI-LANE UNDIVIDED HIGHWAYS USE THIS DETAIL NOT HIGHWAY STANDARD 781001)

TYPICAL PARKING SPACING



TYPICAL PAVEMENT MARKING FOR TWO LANE SECTION - NO PASSING ZONES



FILE NAME = District 2 Standard	USER NAME = IDOT/District 2	DESIGNED -	REVISED - 6-27-14
		DRAWN -	REVISED - 8-27-13
	PLOT SCALE = 1:8000' / in.	CHECKED -	REVISED - 11-28-12
	PLOT DATE = 8/4/2017	DATE -	REVISED -

STATE OF ILLINOIS
DEPARTMENT OF TRANSPORTATION

REGION 2 / DISTRICT 2 STANDARD

F.A. RTE.	SECTION	COUNTY	TOTAL SHEETS	SHEET NO.

SCALE: SHEET NO. OF SHEETS STA. TO STA.

FED. ROAD DIST. NO. ILLINOIS FED. AID PROJECT CONTRACT NO.

TYPICAL PAVEMENT MARKINGS SHEET 3 OF 3 41.1



DESIGNED - JMA	REVISED -
DRAWN - JMA	REVISED -
CHECKED - MAP	REVISED -
DATE - 09/19/2019	REVISED -

STATE OF ILLINOIS
DEPARTMENT OF TRANSPORTATION

DISTRICT 2 STANDARDS

SCALE: SHEET 4 OF 4 SHEETS STA. TO STA.

F.A. RTE.	SECTION	COUNTY	TOTAL SHEETS	SHEET NO.
694	75	LEE	17	17

CONTRACT NO. 64M29 ILLINOIS FED. AID PROJECT