

068

03-06-2020 LETTING ITEM 068

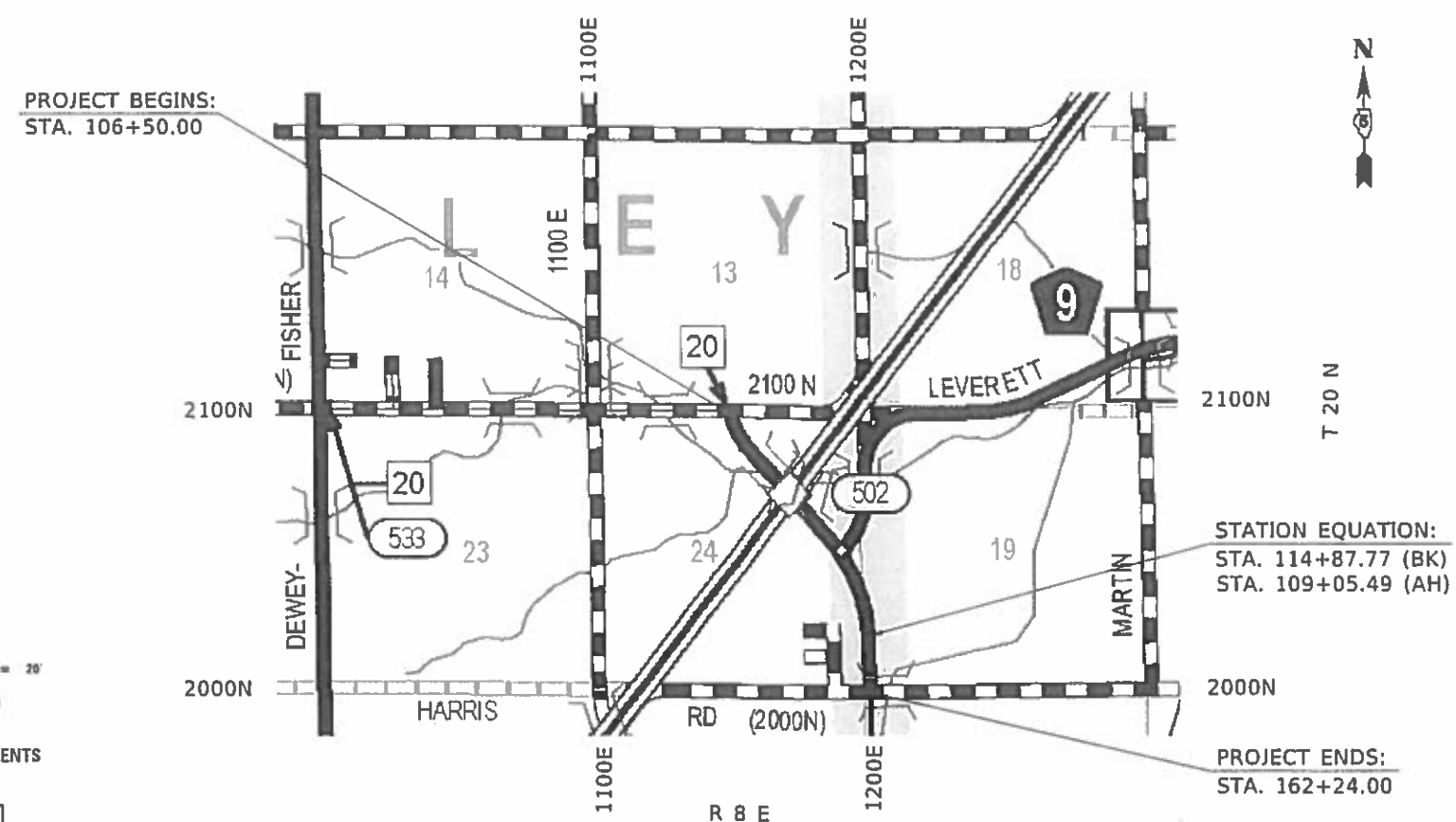
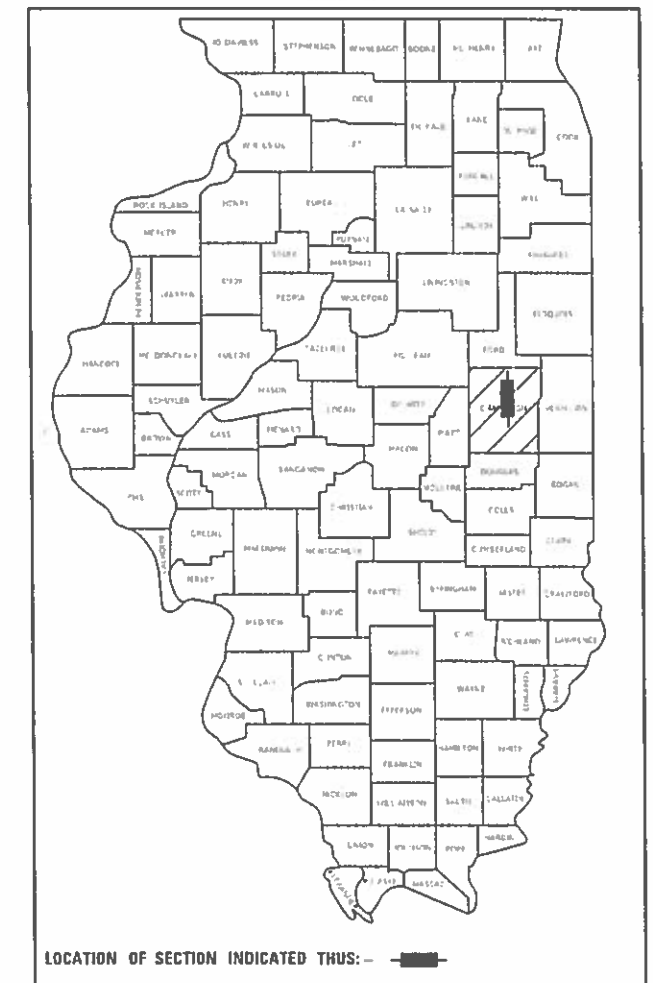
F.A.S. RTE.	SECTION	COUNTY	TOTAL SHEETS	SHEET NO.
533	D5 CM PATCH 2020-2	CHAMPAIGN	7	1
		ILLINOIS	CONTRACT NO. 70E33	

STATE OF ILLINOIS
DEPARTMENT OF TRANSPORTATION
**PROPOSED
HIGHWAY PLANS**

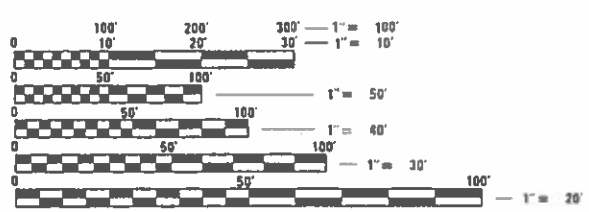
FOR INDEX OF SHEETS, SEE SHEET NO. 2
FOR SUMMARY OF QUANTITIES, SEE SHEET NO. 3

FAS 533 ROUTE (MARKET ST)
SECTION D5 CM PATCH 2020-2
PROJECT
PATCHING
CHAMPAIGN COUNTY
C-95-018-20
FORD HARRIS RD. TO HENSLEY RD. N. OF CHAMPAIGN

P-95-007-20



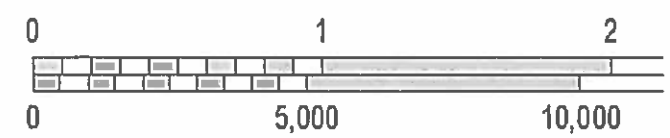
TOWNSHIPS:
HENSLEY, SOMER



FULL SIZE PLANS HAVE BEEN PREPARED USING STANDARD ENGINEERING SCALES. REDUCED SIZED PLANS WILL NOT CONFORM TO STANDARD SCALES. IN MAKING MEASUREMENTS ON REDUCED PLANS, THE ABOVE SCALES MAY BE USED.

J.U.L.I.E.
JOINT UTILITY LOCATION INFORMATION FOR EXCAVATORS
1-800-892-0123
OR 811

PROJECT ENGINEER JASON STULTS
PROJECT MANAGER RYAN CARROLL
DESIGNER AARON FARNHAM
PHONE NUMBER: (217) 465-4181
CONTRACT NO. 70E33



GROSS LENGTH = 6156.28 FT. = 1.166 MILE
NET LENGTH = 6156.28 FT. = 1.166 MILE

STATE OF ILLINOIS
DEPARTMENT OF TRANSPORTATION

SUBMITTED *December 11, 2019*

James A. Jones
REGIONAL ENGINEER

Jan 31, 2020
or E.A. Elk
ENGINEER OF DESIGN AND ENVIRONMENT

Jan 31, 2020
James A. Jones
DIRECTOR OF HIGHWAYS PROJECT IMPLEMENTATION

PRINTED BY THE AUTHORITY
OF THE STATE OF ILLINOIS

INDEX OF SHEETS

SHEET NO.	DESCRIPTION
1	COVER SHEET
2	INDEX OF SHEETS
2	HIGHWAY STANDARDS
2	GENERAL NOTES
2	COMMITMENTS
3	SUMMARY OF QUANTITIES
4-6	TYPICAL CROSS SECTION
7	SCHEDULE OF QUANTITIES

HIGHWAY STANDARDS

STANDARD NO.	DESCRIPTION
000001-07	STANDARD SYMBOLS, ABBREVIATIONS AND PATTERNS
001001-02	AREAS OF REINFORCEMENT BARS
001006	DECIMAL OF AN INCH AND OF A FOOT
420701-03	PAVEMENT WELDED WIRE REINFORCEMENT
442101-09	CLASS B PATCHES
701001-02	OFF-RD OPERATIONS, 2L, 2W, MORE THAN 15' (4.5m) AWAY
701006-05	OFF-RD OPERATIONS, 2L, 2W, 15' (4.5m) TO 24" (600mm) FROM PAVEMENT EDGE
701201-05	LANE CLOSURE, 2L, 2W, DAY ONLY, FOR SPEEDS > 45 MPH
701301-04	LANE CLOSURE, 2L, 2W, SHORT TIME OPERATIONS
701901-08	TRAFFIC CONTROL DEVICES

GENERAL NOTES

G.N. - 100A
ELECTRONIC FILES AND/OR ELECTRONIC SURVEY INFORMATION INCLUDING CADD FILES WILL NOT BE AVAILABLE TO THE CONTRACTOR.

G.N. - 442B - PATCHING SCHEDULES
THE PATCHING SCHEDULES INCLUDED IN THE PLANS REPRESENT THE BEST INFORMATION AVAILABLE AT THE TIME OF COMPLETION OF THE PLANS FOR LETTING. VARIATIONS IN LOCATION AND SIZES OF THE FULL-DEPTH AND PARTIAL-DEPTH PATCHES WAY OCCUR.

G.N.- 1004.01
COARSE AGGREGATE GRADATION CA-10 MAY BE USED WHENEVER COARSE AGGREGATE CA-6 IS SPECIFIED IN THE STANDARD SPECIFICATIONS.

COMMITMENTS

NO COMMITMENTS

MODEL: I:\MODEL\NAMES
FILE: Names_Plan\Illinois\pwr\PROJECTS\DOT\Office\Drawings\70E33\CADDData\CADDsheets\0570E33-cht-CentNote.dgn

USER NAME = PiersonTJ	DESIGNED -	REVISED -
	DRAWN -	REVISED -
PLOT SCALE = 40.0000 ' / in.	CHECKED -	REVISED -
PLOT DATE = 12/11/2019	DATE -	REVISED -

**STATE OF ILLINOIS
DEPARTMENT OF TRANSPORTATION**

**INDEX OF SHEETS, HIGHWAY
STANDARDS, & GENERAL NOTES**

SCALE: SHEET 1 OF 1 SHEETS STA. TO STA.

F.A.S. RTE.	SECTION	COUNTY	TOTAL SHEETS	SHEET NO.
533	D5 CM PATCH 2020-2	CHAMPAIGN	7	2
				CONTRACT NO. 70E33
		ILLINOIS	FED. AID PROJECT	

SUMMARY OF QUANTITIES

LOCATION OF WORK: FAS 533 (MARKET ST.)
 RURAL
 STA. 106+50.00 TO STA0 162+24.00
 CHAMPAIGN COUNTY
 FUNDING BREAKOUT: 100% STATE
 CONSTRUCTION CODE: 0006

CODE	ITEM	UNIT	TOTAL QUANTITY
44200050	WELDED WIRE REINFORCEMENT	SQ YD	698.0
44200994	CLASS B PATCHES, TYPE II, 12 INCH	SQ YD	99.0
44201063	CLASS B PATCHES, TYPE II, 18 INCH	SQ YD	9.0
44200998	CLASS B PATCHES, TYPE III, 12 INCH	SQ YD	78.0
44201067	CLASS B PATCHES, TYPE III, 18 INCH	SQ YD	35.0
44201000	CLASS B PATCHES, TYPE IV, 12 INCH	SQ YD	383.0
44201069	CLASS B PATCHES, TYPE IV, 18 INCH	SQ YD	203.0
44201299	DOWEL BARS 1 1/2"	EACH	825.0
44213200	SAW CUTS	FOOT	1649.0
44213204	TIE BARS 3/4"	EACH	135.0
67100100	MOBILIZATION	L SUM	1.0
70100450	TRAFFIC CONTROL AND PROTECTION, STANDARD 701201	L SUM	1.0
70107025	CHANGEABLE MESSAGE SIGN	CAL DA	6.0

*DENOTES SPECIALTY ITEM

MODEL: \\MODEL\MATF
 FILE: MATF_Plan\Illinois.pwd\DOT\Documents\DOT_Offices\Illinois\Projects\533\CADDData\CAD\Sheet\0570E33-CH-500.dgn

USER NAME = PiersonJ	DESIGNED -	REVISED -
	DRAWN -	REVISED -
PLOT SCALE = 40.0000 ' / in.	CHECKED -	REVISED -
PLOT DATE = 12/11/2019	DATE -	REVISED -

**STATE OF ILLINOIS
DEPARTMENT OF TRANSPORTATION**

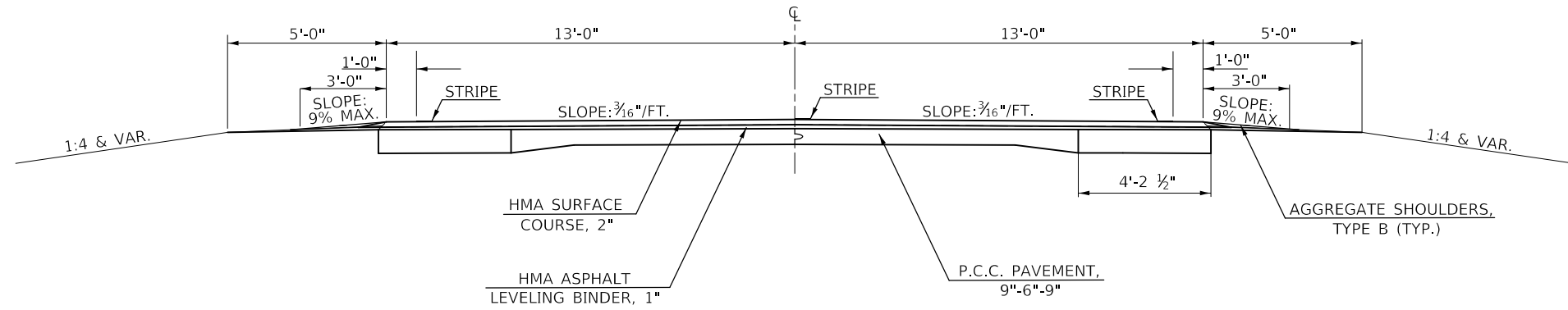
SUMMARY OF QUANTITIES

SCALE: SHEET 1 OF 1 SHEETS STA. TO STA.

F.A.S. RTE.	SECTION	COUNTY	TOTAL SHEETS	SHEET NO.
533	D5 CM PATCH 2020-2	CHAMPAIGN	7	3
			CONTRACT NO. 70E33	
ILLINOIS FED. AID PROJECT				

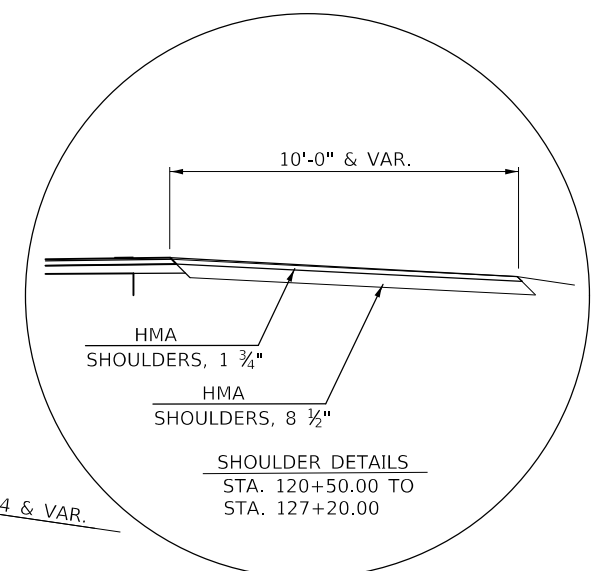
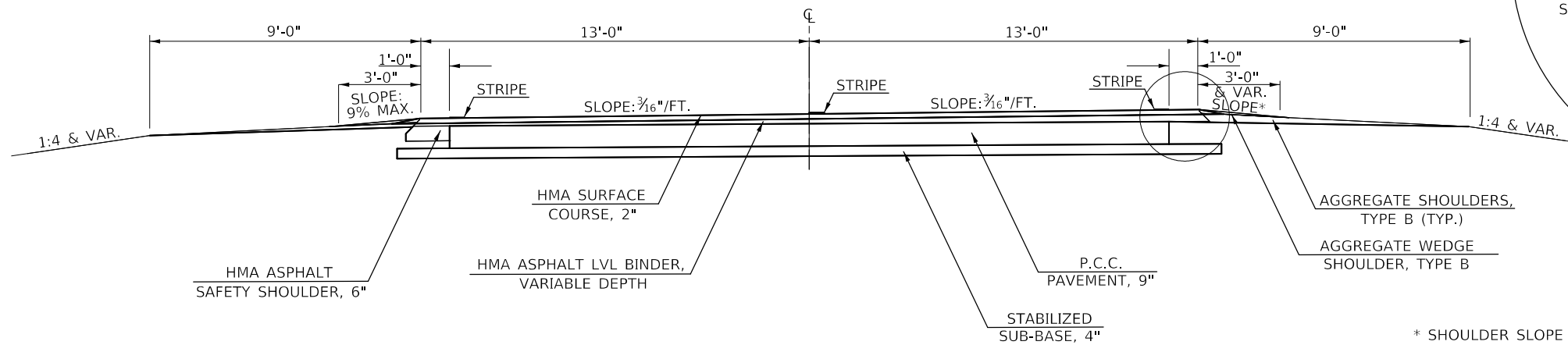
(A) EXISTING TYPICAL CROSS SECTION

STATION TO STATION
 106 + 50.00 113 + 86.00 (B)



(B) EXISTING TYPICAL CROSS SECTION

STATION TO STATION
 (A) 113 + 86.00 114 + 87.77 (BK)
 109 + 05.49 (AH) 133 + 78.69 (C)



* SHOULDER SLOPE THROUGH SUPERELEVATION VARIES FROM 6.5% - 9% MAXIMUM SLOPE TO MAINTAIN 10% MAXIMUM ROLLOVER CRITERIA.

MODEL: \\MODEL\NAMES
 FILE: \\NAME: P:\pub\mcom\mdata\illinois.gov\PI\DOT\Documents\DOT_Offices\District 5\Projects\0570E33\CADD\DATA\CAD\Sheet\0570E33-ehc-Typical.dgn

USER NAME = PiersonTJ	DESIGNED -	REVISED -
	DRAWN -	REVISED -
PLOT SCALE = 5,0000' / in.	CHECKED -	REVISED -
PLOT DATE = 12/11/2019	DATE -	REVISED -

STATE OF ILLINOIS
 DEPARTMENT OF TRANSPORTATION

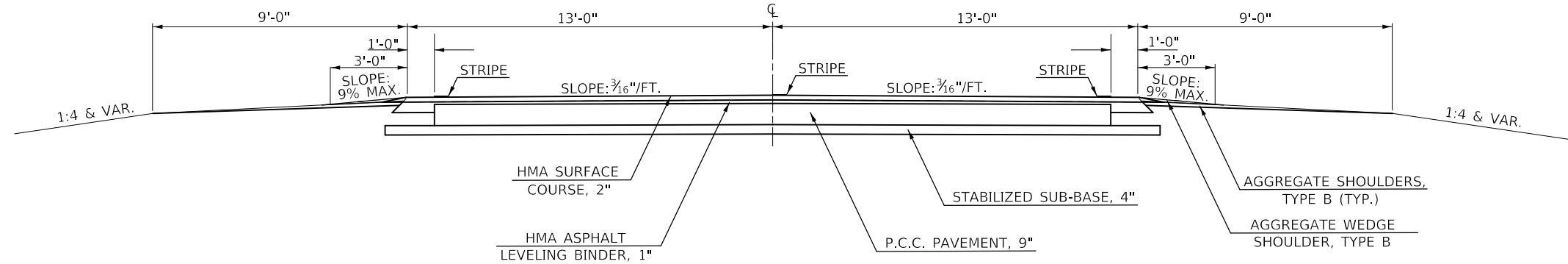
TYPICAL CROSS SECTIONS

SCALE: NTS SHEET 1 OF 3 SHEETS STA. TO STA.

F.A.S. RTE.	SECTION	COUNTY	TOTAL SHEETS	SHEET NO.
533	D5 CM PATCH 2020-2	CHAMPAIGN	7	4
CONTRACT NO. 70E33				
ILLINOIS FED. AID PROJECT				

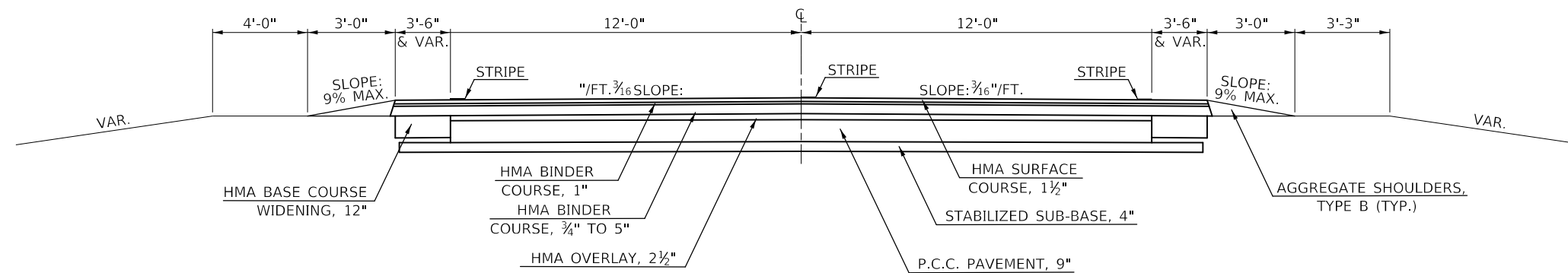
C EXISTING TYPICAL CROSS SECTION

STATION TO STATION
B 133 + 78.69 TO 136 + 85.00 **D**



D EXISTING TYPICAL CROSS SECTION

STATION TO STATION
C 136 + 85.00 TO 143 + 15.76 OMISSION
OMISSION 144 + 40.68 TO 149 + 62.00 **E**



MODEL: \\MODEL\MAR18
 FILE: \\MAR18_Plan\Submittal\70E33\CADD\DATA\CAD\PROJECTS\70E33-CHC-TYPICAL.dgn

USER NAME = PiersonTJ	DESIGNED -	REVISED -
	DRAWN -	REVISED -
PLOT SCALE = 5.0000' / in.	CHECKED -	REVISED -
PLOT DATE = 12/11/2019	DATE -	REVISED -

**STATE OF ILLINOIS
 DEPARTMENT OF TRANSPORTATION**

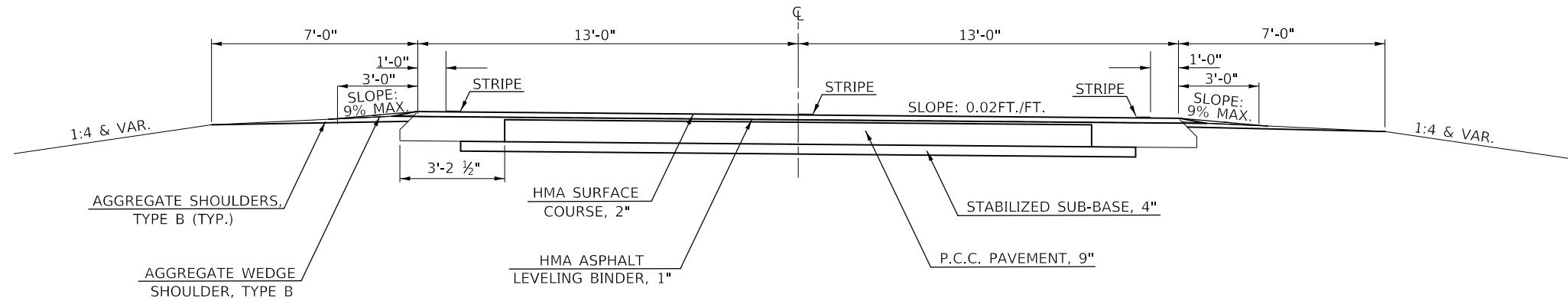
SCALE: NTS SHEET 2 OF 3 SHEETS STA. TO STA.

TYPICAL CROSS SECTIONS

F.A.S. RTE.	SECTION	COUNTY	TOTAL SHEETS	SHEET NO.
533	D5 CM PATCH 2020-2	CHAMPAIGN	7	5
CONTRACT NO. 70E33				
ILLINOIS FED. AID PROJECT				

E EXISTING TYPICAL CROSS SECTION

STATION TO STATION
D 149 + 62.00 TO 162 + 24.00



MODEL: \\MODEL\NAME: FILE: NAME: P:\pub\mcom\mdata\illinois\pwr\WIDOT\Documents\DOT_Offices\District 5\Projects\0570E33\CADD\DATA\CAD\Sheet\0570E33-ehc-Typical.dgn

USER NAME = PiersonJ	DESIGNED -	REVISED -
	DRAWN -	REVISED -
PLOT SCALE = 5.0000' / in.	CHECKED -	REVISED -
PLOT DATE = 12/11/2019	DATE -	REVISED -

**STATE OF ILLINOIS
DEPARTMENT OF TRANSPORTATION**

TYPICAL CROSS SECTIONS	
SCALE: NTS	SHEET 3 OF 3 SHEETS
STA.	TO STA.

F.A.S. RTE.	SECTION	COUNTY	TOTAL SHEETS	SHEET NO.
533	D5 CM PATCH 2020-2	CHAMPAIGN	7	6
CONTRACT NO. 70E33				
ILLINOIS FED. AID PROJECT				

SCHEDULE OF QUANTITIES

STATION	DIRECTION	LANE	LENGTH (ft)	WIDTH (ft)	CLASS B PATCH AREA			CLASS B PATCH AREA			DOWEL BARS 44201299 (each)	SAW CUTS 44213200 (ft)	TIE BARS 3/4" 44213204 (each)	WELDED WIRE REINFORCEMENT 44200050 (sq. yd)
					TYPE II 12.0" 44200994 (sq. yd)	TYPE III 12.0" 44200998 (sq. yd)	TYPE IV 12.0" 44201000 (sq. yd)	TYPE II 12.0" 44200994 (sq. yd)	TYPE III 12.0" 44200998 (sq. yd)	TYPE IV 12.0" 44201000 (sq. yd)				
					110+85.00	NB	DL	8	13	11.6				
110+85.00	SB	DL	8	13	11.6	0.0	0.0	0.0	0.0	0.0	22	47.0	0	0.0
114+87.77	STATION EQUATION (BK)													
109+05.49	STATION EQUATION (AH)													
110+85.00	SB	DL	15	13	0.0	21.7	0.0	0.0	0.0	0.0	22	54.0	0	21.7
113+18.00	SB	DL	10	13	14.4	0.0	0.0	0.0	0.0	0.0	22	49.0	0	0.0
113+83.00	SB	DL	25	13	0.0	0.0	36.1	0.0	0.0	0.0	33	64.0	8	36.1
116+32.00	SB	DL	6	13	8.7	0.0	0.0	0.0	0.0	0.0	22	45.0	0	0.0
116+75.00	SB	DL	6	13	8.7	0.0	0.0	0.0	0.0	0.0	22	45.0	0	0.0
116+94.00	SB	DL	6	13	8.7	0.0	0.0	0.0	0.0	0.0	22	45.0	0	0.0
118+39.00	SB	DL	8	13	11.6	0.0	0.0	0.0	0.0	0.0	22	47.0	0	0.0
119+63.00	SB	DL	10	13	14.4	0.0	0.0	0.0	0.0	0.0	22	49.0	0	0.0
120+00.00	SB	DL	12	13	0.0	17.3	0.0	0.0	0.0	0.0	22	51.0	0	17.3
125+95.00	NB	DL	6	13	8.7	0.0	0.0	0.0	0.0	0.0	22	45.0	0	0.0
131+89.00	SB	DL	15	13	0.0	21.7	0.0	0.0	0.0	0.0	22	54.0	0	21.7
133+57.00	SB	DL	25	13	0.0	0.0	36.1	0.0	0.0	0.0	33	64.0	8	36.1
133+57.00	NB	DL	25	13	0.0	0.0	36.1	0.0	0.0	0.0	33	64.0	8	36.1
134+60.00	SB	DL	50	13	0.0	0.0	72.2	0.0	0.0	0.0	55	89.0	17	72.2
134+65.00	NB	DL	40	13	0.0	0.0	57.8	0.0	0.0	0.0	44	79.0	13	57.8
135+26.00	SB	DL	50	13	0.0	0.0	72.2	0.0	0.0	0.0	55	89.0	17	72.2
136+11.00	NB	DL	30	13	0.0	0.0	43.3	0.0	0.0	0.0	33	69.0	10	43.3
136+55.00	NB	DL	12	13	0.0	17.3	0.0	0.0	0.0	0.0	22	51.0	0	17.3
136+55.00	SB	DL	20	13	0.0	0.0	28.9	0.0	0.0	0.0	33	59.0	7	28.9
137+03.00	NB	DL	30	13	0.0	0.0	0.0	0.0	0.0	43.3	33	69.0	10	43.3
137+50.00	SB	DL	60	13	0.0	0.0	0.0	0.0	0.0	86.7	55	99.0	20	86.7
137+80.00	NB	DL	30	13	0.0	0.0	0.0	0.0	0.0	43.3	33	69.0	10	43.3
138+68.00	NB	DL	12	13	0.0	0.0	0.0	0.0	17.3	0.0	22	51.0	0	17.3
139+20.00	NB	DL	12	13	0.0	0.0	0.0	0.0	17.3	0.0	22	51.0	0	17.3
139+53.00	NB	DL	6	13	0.0	0.0	0.0	8.7	0.0	0.0	22	45.0	0	0.0
146+51.00	SB	DL	20	13	0.0	0.0	0.0	0.0	0.0	28.9	33	59.0	7	28.9
TOTALS					99.0 (sq. yd)	78.0 (sq. yd)	383.0 (sq. yd)	9.0 (sq. yd)	35.0 (sq. yd)	203.0 (sq. yd)	825.0 (each)	1649.0 (ft)	135.0 (each)	698.0 (sq. yd)

MODEL: \\MODEL\MATFS
 FILE: MATFS_Plan\Illinois\pwr\WIDOT\Documents\DOT_Offices\Illinois\Projects\70E33\CADDData\CAD\Sheet\70E33-ah-Schedule.dgn

USER NAME = PiersonTJ	DESIGNED -	REVISED -
	DRAWN -	REVISED -
PLOT SCALE = 40.0000' / in.	CHECKED -	REVISED -
PLOT DATE = 12/11/2019	DATE -	REVISED -

**STATE OF ILLINOIS
DEPARTMENT OF TRANSPORTATION**

SCHEDULE OF QUANTITIES

SCALE: SHEET 1 OF 1 SHEETS STA. TO STA.

F.A.S. RTE.	SECTION	COUNTY	TOTAL SHEETS	SHEET NO.
533	D5 CM PATCH 2020-2	CHAMPAIGN	7	7
CONTRACT NO. 70E33				
ILLINOIS		FED. AID PROJECT		