

STATE OF ILLINOIS  
DEPARTMENT OF TRANSPORTATION

F.A.I. RTE	SECTION	COUNTY	TOTAL SHEETS	SHEET NO.
172	CJS - ADAMS CO - 2019	ADAMS	12	1
ILLINOIS			CONTRACT NO. 72L29	

# PROPOSED HIGHWAY PLANS

FAI ROUTE 172 (I-172)  
SECTION CJS - ADAMS CO - 2019  
PROJECT NHPP-H7KT(052)  
CRACK & JOINT SEALING  
ADAMS COUNTY

C-96-065-19

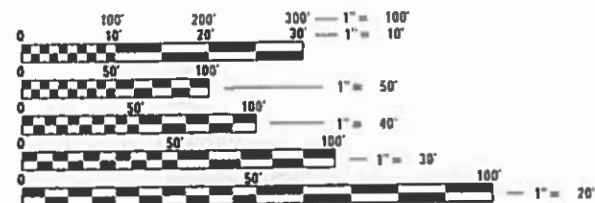
### INDEX OF SHEETS

- 1 COVER SHEET
- 2 GENERAL NOTES
- 3 SUMMARY OF QUANTITIES
- 4-6 TYPICAL SECTIONS
- 7 SCHEDULE OF QUANTITIES
- 8-12 EXISTING ALIGNMENT

### HIGHWAY STANDARDS

- 000001-07
- 001006
- 701106-02
- 701426-09
- 701901-08

DESIGN DESIGNATION:  
FAI 172  
INTERSTATE  
ADT = 10,250 (2020)  
SU = 4.40%  
MU = 9.33%



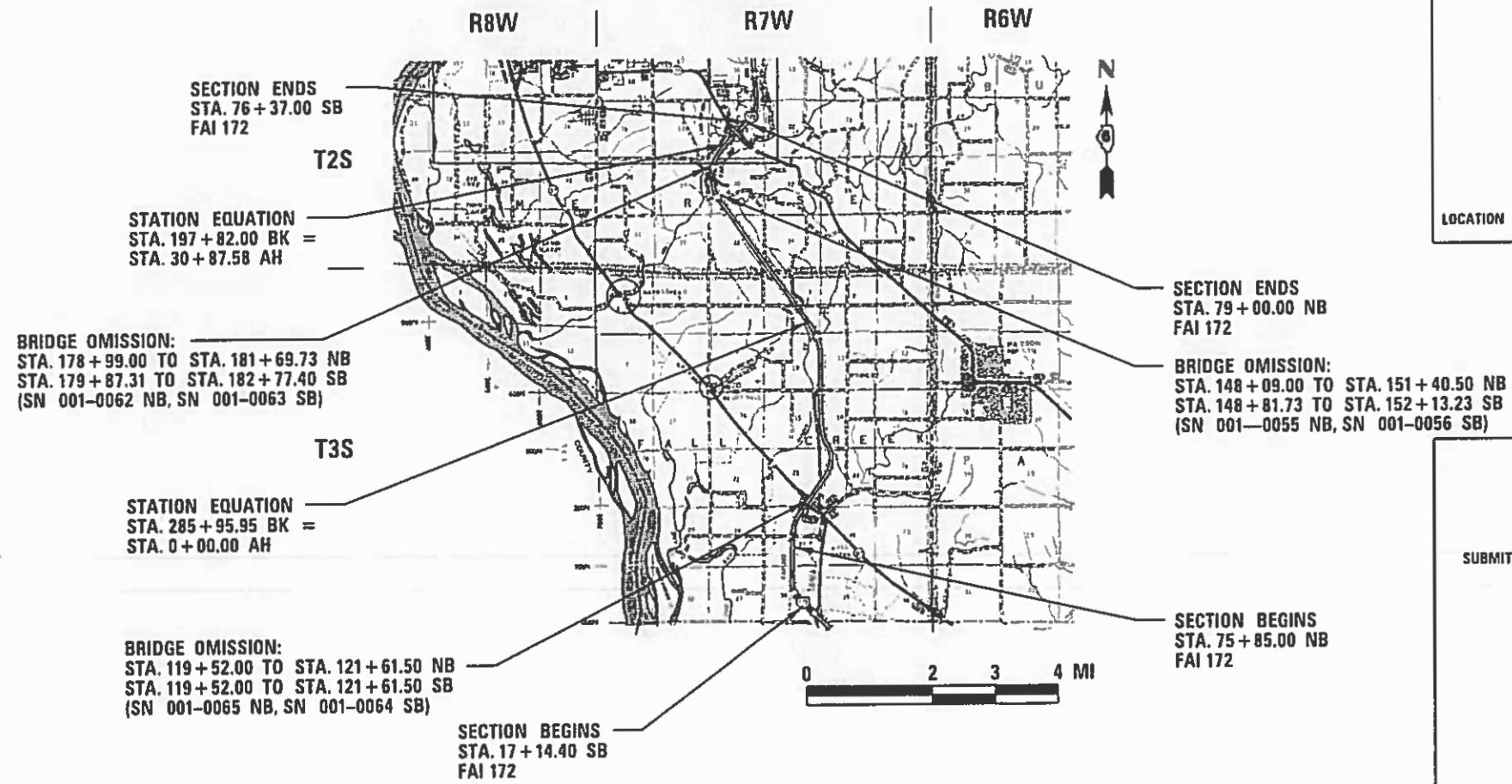
FULL SIZE PLANS HAVE BEEN PREPARED USING STANDARD ENGINEERING SCALES. REDUCED SIZED PLANS WILL NOT CONFORM TO STANDARD SCALES. IN MAKING MEASUREMENTS ON REDUCED PLANS, THE ABOVE SCALES MAY BE USED.

J.U.L.I.E.  
JOINT UTILITY LOCATION INFORMATION FOR EXCAVATORS  
1-800-892-0123  
OR 811

PROJECT ENGINEER: JONATHAN KELLEY (217) 785-2739  
PROJECT MANAGER: BRIAN MINDER (217) 557-7897

CONTRACT NO. 72L29

GROSS LENGTH = 51,475.97 FT. = 9.749 MILES  
NET LENGTH = 51,475.97 FT. = 9.749 MILES



STATE OF ILLINOIS  
DEPARTMENT OF TRANSPORTATION

SUBMITTED Dec 11 2019  
Jeff P. My... REGIONAL ENGINEER  
Jan 31 2020  
Scott A. Etk... ENGINEER OF DESIGN AND ENVIRONMENT  
Jan 31 2020  
Demetrius... DIRECTOR OF HIGHWAYS PROJECT IMPLEMENTATION

PRINTED BY THE AUTHORITY  
OF THE STATE OF ILLINOIS

**GENERAL NOTES:**

- FOR STABILIZATION, ALL TYPE III BARRICADES SHALL REQUIRE A MINIMUM OF FOUR SANDBAGS PER BARRICADE.
- THE INTERCHANGE RAMPS AT THE I-172/IL 57 AND I-172/IL 96 INTERCHANGES ARE NOT INCLUDED IN THIS PROJECT.

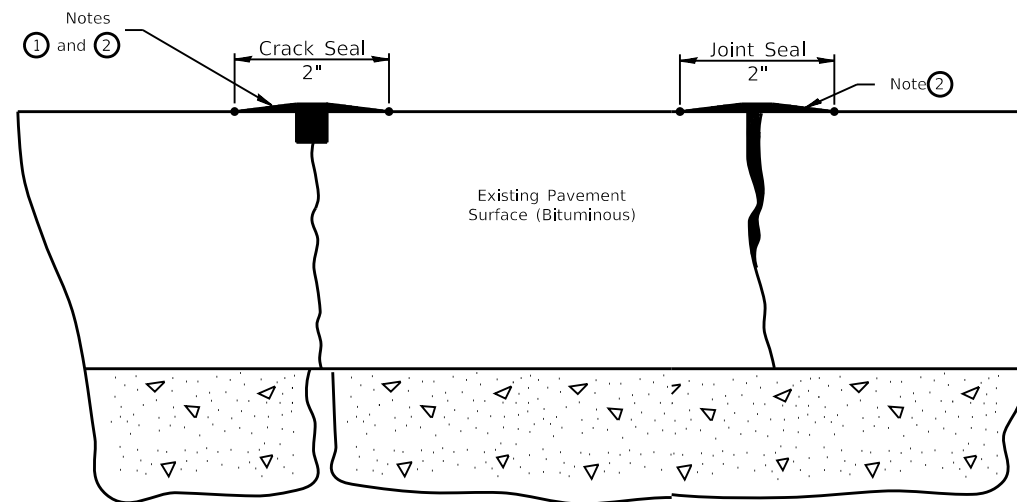
**COMMITMENTS**

- THE RESIDENT ENGINEER SHALL CONTACT STUDIES AND PLANS CONCERNING ANY MAJOR PLAN CHANGE TO MAKE SURE NO PREVIOUS COMMITMENTS (NOT LISTED) WERE MADE AFFECTING THE DESIGN AND TO ALLOW IMPROVED DESIGN FOR FUTURE PROJECTS.

**RATES OF APPLICATION USED TO CALCULATE PLAN QUANTITIES**

CRACK FILLING (FOR ROUTED CRACKS)	0.225 POUND/LIN. FT.
CRACK FILLING (FOR NON-ROUTED CRACKS)	0.165 POUND/LIN. FT.

**JOINT/CRACK SEAL DETAIL**



**TRANSVERSE  
CRACKS**

**LONGITUDINAL  
CENTERLINE AND EOP JOINTS**

**NOTES**

- Route or saw to 3/4" wide by 3/4" deep; (1:1 ratio).
- Overfill with sealant; squeegee to provide 2" wide flush "band-aid" effect; feather edges flush.

CRACK OR JOINT SEAL IN AREAS ADJACENT TO EXISTING PAVEMENT MARKINGS SHALL BE REDUCED OR ELIMINATED AS DIRECTED BY THE ENGINEER.

**STATE OF ILLINOIS  
DEPARTMENT OF TRANSPORTATION  
DIVISION OF HIGHWAYS  
DISTRICT 6**

EXAMINED December 9 20 19

*[Signature]*  
ENGINEER OF OPERATIONS

EXAMINED December 9 20 19

*[Signature]*  
ENGINEER OF PROJECT IMPLEMENTATION

EXAMINED December 9 20 19

*[Signature]*  
ENGINEER OF PROGRAM DEVELOPMENT

MODEL: Default  
FILE: \\blm1c01\pub\baronm.dwg  
PROJECT: \\blm1c01\pub\baronm.dwg  
DRAWING: \\blm1c01\pub\baronm.dwg  
DATE: 12/11/2019

USER NAME = Default	DESIGNED - _____	REVISED - _____
	DRAWN - _____	REVISED - _____
PLOT SCALE = 20.0000 ' / in.	CHECKED - _____	REVISED - _____
PLOT DATE = 12/11/2019	DATE - _____	REVISED - _____

**STATE OF ILLINOIS  
DEPARTMENT OF TRANSPORTATION**

**GENERAL NOTES**

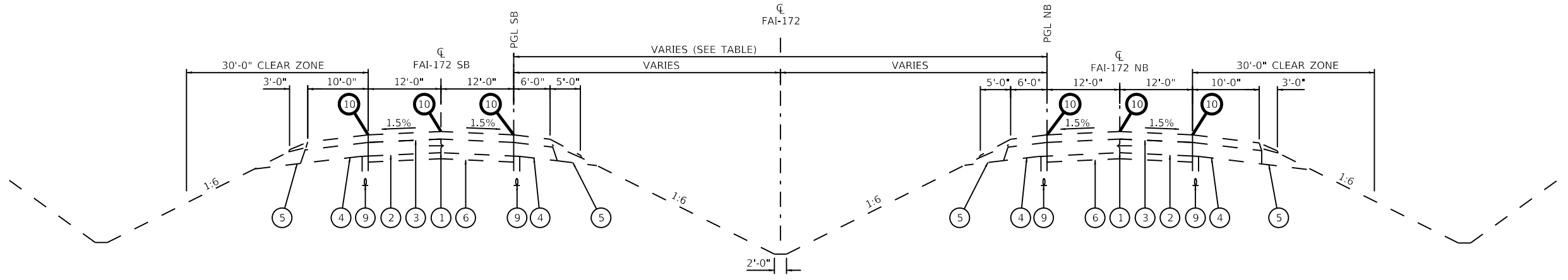
SCALE: NTS SHEET 1 OF 1 SHEETS STA. N/A TO STA. N/A

F.A.I. RTE.	SECTION	COUNTY	TOTAL SHEETS	SHEET NO.
172	CJS - ADAMS CO - 2019	ADAMS	12	2
			CONTRACT NO. 72L29	
		ILLINOIS	FED. AID PROJECT	

PPS# 6-01037-0000  
 90% FEDERAL  
 10% STATE  
 ROADWAY  
 0005  
 RURAL- ADAMS CO.

CODE NO.	ITEM	UNIT	TOTAL QUANTITY	
45100100	CRACK ROUTING (PAVEMENT)	FOOT	360	360
45100200	CRACK FILLING	POUND	47,193	47,193
67100100	MOBILIZATION	L SUM	1	1
70107025	CHANGEABLE MESSAGE SIGN	CAL DA	100	100
X7010216	TRAFFIC CONTROL AND PROTECTION (SPECIAL)	L SUM	1	1

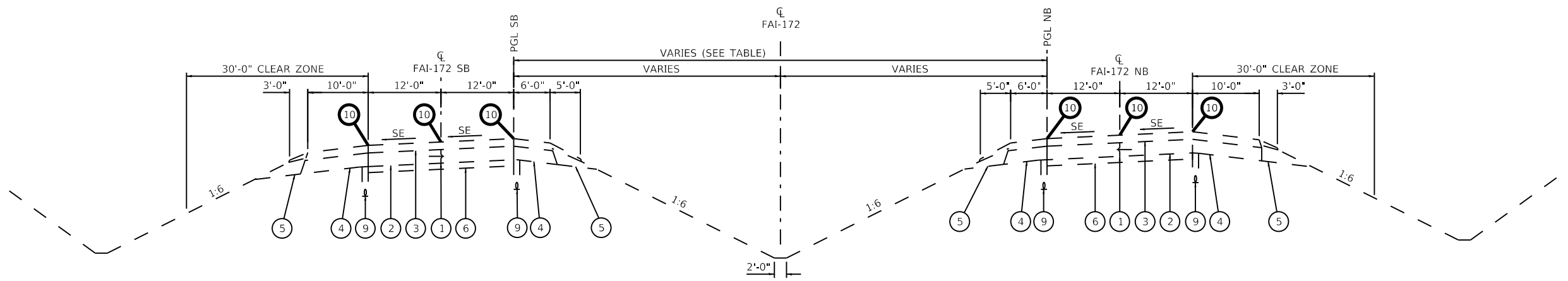
MODEL: Default  
 FILE: \\blm1c01.pw.state.il.us\pub\arcgis\dot\Documents\DOT\_Offices\District\_6\Projects\0672L29\CADD\Drawings\0672L29-CH1-S00.dwg



(S.B. ONLY) STA. 17+14.40 TO STA. 21+69.74  
 (S.B. ONLY) STA. 46+11.02 TO STA. 75+85.00  
 STA. 178+23.29 TO STA. 191+20.22  
 STA. 212+53.76 TO STA. 261+68.42  
 STA. 285+76.16 TO STA. 156+75.69  
 STA. 30+87.58 TO STA. 73+12.06

**BRIDGE OMISSION:**  
 STA. 148+09.00 TO STA. 151+40.50 (N.B. SN 001-0055)  
 STA. 148+81.73 TO STA. 152+13.23 (S.B. SN 001-0056)

STATION TO STATION		WIDTH
16+40.03	91+16.15	54'
91+16.15	102+88.00	54'-30"
102+88.00	160+05.00	30'
160+05.00	178+23.29	30'-54"
178+23.29	285+95.95	54'
0+00.00	131+07.92	54'
131+07.92	144+00.00	54'-88"
144+00.00	197+82.00	88'
30+87.58	79+00.00	88'



(S.B. ONLY) STA. 21+69.74 TO STA. 46+11.02 (SE = 6.00% RT)  
 STA. 191+20.22 TO STA. 212+53.76 (SE = 4.20% RT)  
 STA. 261+68.42 TO STA. 285+76.16 (SE = 5.20% LT)  
 STA. 156+75.69 TO STA. 197+82.00 (SE = 6.00% RT)  
 STA. 73+12.06 TO STA. 79+00.00 (SE = 6.00% LT)

**STATION EQUATIONS**  
 STA. 285+95.95 BK = STA. 0+00.00 AH  
 STA. 197+82.00 BK = STA. 30+87.58 AH

**BRIDGE OMISSION:**  
 STA. 178+99.00 TO STA. 181+69.73 (SB SN 001-0062)  
 STA. 179+87.31 TO STA. 182+77.40 (NB SN 001-0063)

**LEGEND**

- ① EXIST. LONGITUDINAL JOINT
- ② EXIST. CRC PAVEMENT, 9"
- ③ EXIST. BITUMINOUS CONCRETE, 3 3/4"
- ④ EXIST. BITUMINOUS SHOULDERS, 11 3/4"
- ⑤ EXIST. AGGREGATE SHOULDERS
- ⑥ EXIST. SUB-BASE GRANULAR MATERIAL, 6"
- ⑦ EXIST. ROCK SUBGRADE, 18" MIN.
- ⑧ EXIST. MEDIAN CONCRETE BARRIER
- ⑨ EXIST. PIPE UNDERDRAIN
- ⑩ PROP. CRACK FILLING

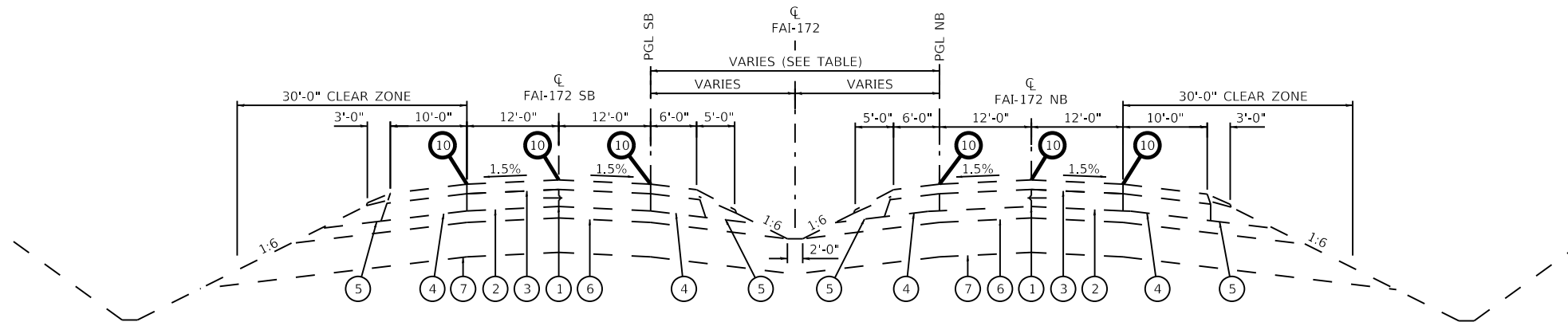
MODEL: Default  
 FILE: h:\m115\p115\subarea\m115\p115\DOT\Documents\DOT Office\Drawings\Projects\0672129\CADD\DATA\CAD\sheet\0672129-2-11-17.dwg

USER NAME = Default	DESIGNED - _____	REVISED - _____
DRAWN - BTM	REVISOR - _____	REVISED - _____
PLOT SCALE = 20.0000 ' / in.	CHECKED - _____	REVISED - _____
PLOT DATE = 12/12/2019	DATE - _____	REVISED - _____

**STATE OF ILLINOIS  
 DEPARTMENT OF TRANSPORTATION**

<b>TYPICAL SECTIONS</b>			
SCALE: 1" = 10'	SHEET 1	OF 3 SHEETS	STA. N/A TO STA. N/A

F.A.I. RTE.	SECTION	COUNTY	TOTAL SHEETS	SHEET NO.
172	C/S - ADAMS CO - 2019	ADAMS	12	4
CONTRACT NO. 72L29				
ILLINOIS FED. AID PROJECT				

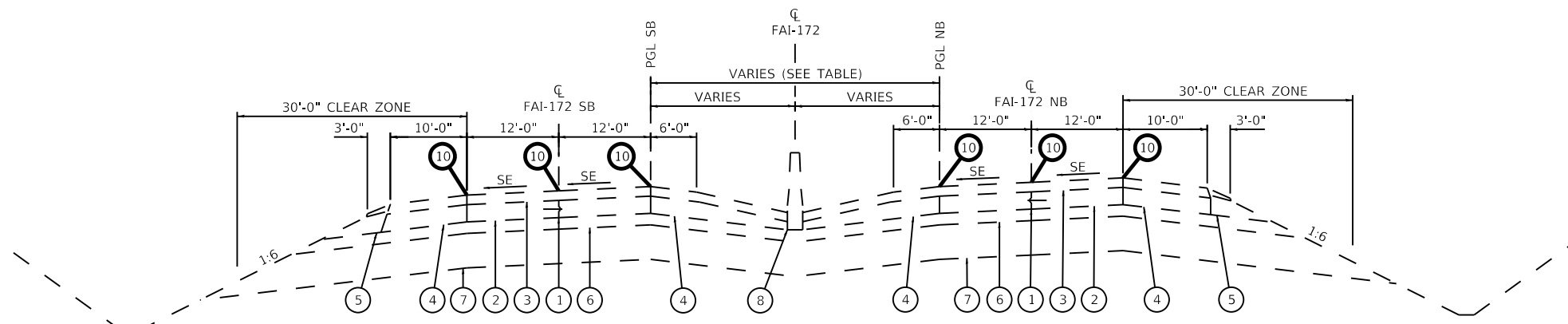


STA. 75+85.00 TO STA. 91+16.15

**BRIDGE OMISSION;**

STA. 119+52.00 TO STA. 121+61.50 (N.B. SN 001-0065)  
 STA. 119+52.00 TO STA. 121+61.50 (S.B. SN 001-0064)

STATION TO STATION		WIDTH
16+40.03	91+16.15	54'
91+16.15	102+88.00	54'-30"
102+88.00	160+05.00	30'
160+05.00	178+23.29	30'-54"
178+23.29	285+95.95	54'
0+00.00	131+07.92	54'
131+07.92	144+00.00	54'-88"
144+00.00	197+82.00	88'
30+87.58	79+00.00	88'



STA. 91+16.15 TO STA. 111+01.84 (SE = 6.00% RT)  
 STA. 147+74.17 TO STA. 178+23.29 (SE = 6.00% LT)

**MEDIAN CONCRETE BARRIER**  
 BEGINS STA. 102+88.00  
 ENDS STA. 160+05.00

**LEGEND**

- 1 EXIST. LONGITUDINAL JOINT
- 2 EXIST. CRC PAVEMENT, 9"
- 3 EXIST. BITUMINOUS CONCRETE, 3 3/4"
- 4 EXIST. BITUMINOUS SHOULDERS, 11 3/4"
- 5 EXIST. AGGREGATE SHOULDERS
- 6 EXIST. SUB-BASE GRANULAR MATERIAL, 6"
- 7 EXIST. ROCK SUBGRADE, 18" MIN.
- 8 EXIST. MEDIAN CONCRETE BARRIER
- 9 EXIST. PIPE UNDERDRAIN
- 10 PROP. CRACK FILLING

MODEL: Default  
 FILE: 11/12/2019 10:00:00 AM  
 PROJECT: 0672129\CADD\data\CAD\sheet\0672129-2-hdr.dwg

USER NAME = Default	DESIGNED - _____	REVISED - _____
DRAWN - BTM	REVISIONS - _____	REVISIONS - _____
PLOT SCALE = 20.0000 ' / in.	CHECKED - _____	REVISIONS - _____
PLOT DATE = 12/12/2019	DATE - _____	REVISIONS - _____

**STATE OF ILLINOIS  
 DEPARTMENT OF TRANSPORTATION**

**TYPICAL SECTIONS**

SCALE: 1" = 10' SHEET 2 OF 3 SHEETS STA. N/A TO STA. N/A

F.A.I. RTE.	SECTION	COUNTY	TOTAL SHEETS	SHEET NO.
172	CIS - ADAMS CO - 2019	ADAMS	12	5
CONTRACT NO. 72L29				
ILLINOIS FED. AID PROJECT				



### CRACK FILLING SCHEDULE

STA.	STA.	LENGTH (FOOT)	45100100 CRACK ROUTING (PAVEMENT) (FOOT)	45100200 CRACK FILLING (POUND)
<b>NB I-172</b>				
<b>OUTSIDE EOP</b>				
75+85.00	to 119+52.00	4,367		721
121+61.50	to 285+95.95	16,434		2,712
00+00.00	to 148+09.00	14,809		2,443
151+40.50	to 179+87.31	2,847		470
182+77.40	to 197+82.00	1,505		248
30+87.58	to 79+00.00	4,812		794
<b>CENTERLINE</b>				
75+85.00	to 119+52.00	4,367		721
121+61.50	to 285+95.95	16,434		2,712
00+00.00	to 148+09.00	14,809		2,443
151+40.50	to 179+87.31	2,847		470
182+77.40	to 197+82.00	1,505		248
30+87.58	to 79+00.00	4,812		794
<b>MEDIAN EOP</b>				
75+85.00	to 119+52.00	4,367		721
121+61.50	to 285+95.95	16,434		2,712
00+00.00	to 148+09.00	14,809		2,443
151+40.50	to 179+87.31	2,847		470
182+77.40	to 197+82.00	1,505		248
30+87.58	to 79+00.00	4,812		794
<b>TRANS. CRACKS</b>				
118+24.00		24	24	5
122+65.00		24	24	5
127+74.00		24	24	5
128+05.00		24	24	5
146+90.00		24	24	5
152+70.00		24	24	5
178+54.00		24	24	5
178+86.00		24	24	5
184+13.00		24	24	5
<b>SB I-172</b>				
<b>OUTSIDE EOP</b>				
17+14.40	to 119+52.00	10,238		1,689
121+61.50	to 285+95.95	16,434		2,712
00+00.00	to 148+81.73	14,882		2,455
152+13.23	to 178+99.00	2,686		443
181+69.73	to 197+82.00	1,612		266
30+87.58	to 76+37.00	4,549		751
<b>CENTERLINE</b>				
17+14.40	to 119+52.00	10,238		1,689
121+61.50	to 285+95.95	16,434		2,712
00+00.00	to 148+81.73	14,882		2,455
152+13.23	to 178+99.00	2,686		443
181+69.73	to 197+82.00	1,612		266
30+87.58	to 76+37.00	4,549		751

<b>MEDIAN EOP</b>					
17+14.40	to	119+52.00	10,238	1,689	
121+61.50	to	285+95.95	16,434	2,712	
00+00.00	to	148+81.73	14,882	2,455	
152+13.23	to	178+99.00	2,686	443	
181+69.73	to	197+82.00	1,612	266	
30+87.58	to	76+37.00	4,549	751	
<b>TRANS. CRACKS</b>					
118+23.00			24	24	5
122+95.00			24	24	5
147+02.00			24	24	5
153+43.00			24	24	5
177+75.00			24	24	5
189+20.00			24	24	5
<b>TOTAL=</b>			<b>360</b>	<b>47,193</b>	

MODEL: Default  
 FILE: \\blm1c01.pw.us:pub\arcgis\dot\Documents\DOT\_Offices\172\172\Projects\0672129\CADD\data\CAD\sheet\0672129-sh1-sched1.dgn

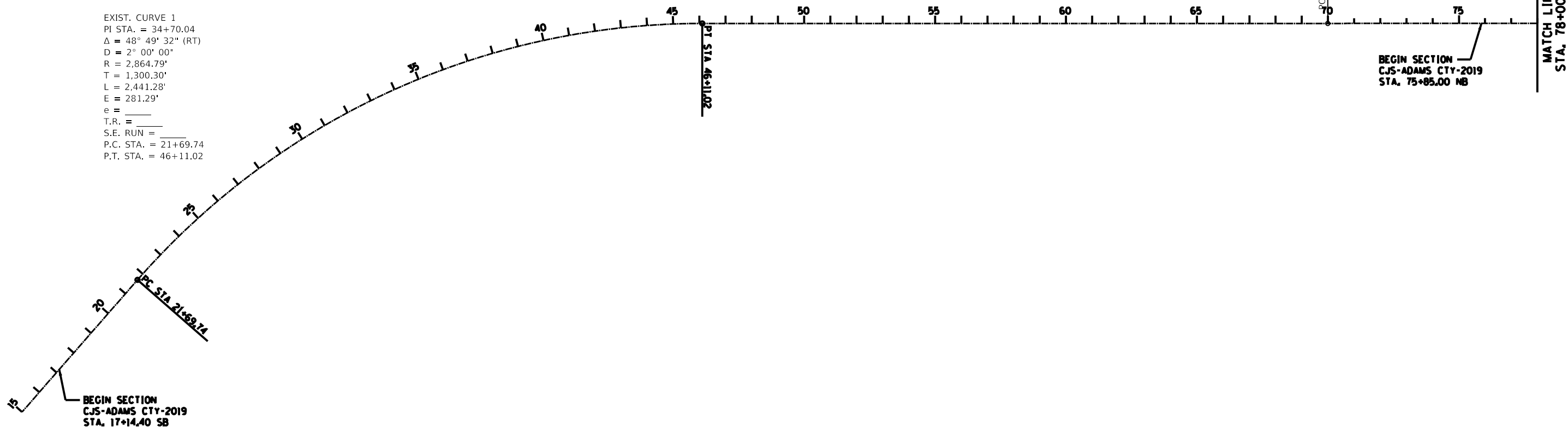
USER NAME = Default	DESIGNED - _____	REVISED - _____
	DRAWN - _____	REVISED - _____
PLOT SCALE = 20.0000 ' / in.	CHECKED - _____	REVISED - _____
PLOT DATE = 12/12/2019	DATE - _____	REVISED - _____

**STATE OF ILLINOIS  
DEPARTMENT OF TRANSPORTATION**

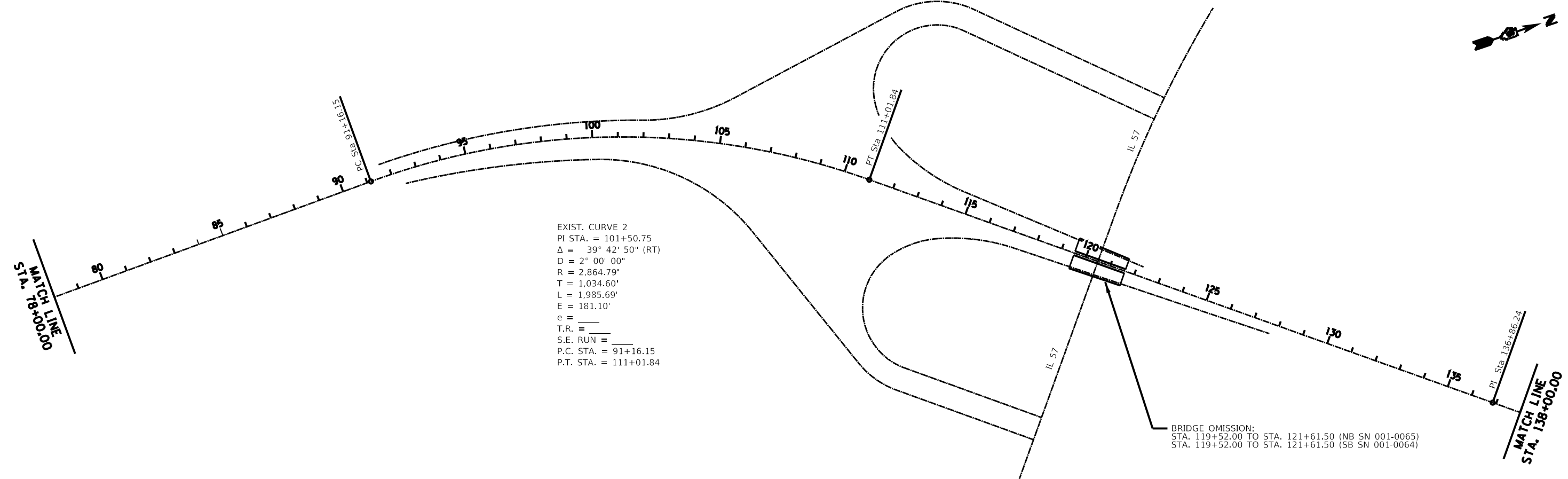
SCHEDULE OF QUANTITIES			
SCALE: NTS	SHEET 1 OF 1 SHEETS	STA. N/A	TO STA. N/A

F.A.I. RTE.	SECTION	COUNTY	TOTAL SHEETS	SHEET NO.
172	C/S - ADAMS CO - 2019	ADAMS	12	7
CONTRACT NO. 72L29				
ILLINOIS FED. AID PROJECT				

EXIST. CURVE 1  
 PI STA. = 34+70.04  
 $\Delta = 48^\circ 49' 32''$  (RT)  
 D = 2° 00' 00"  
 R = 2,864.79'  
 T = 1,300.30'  
 L = 2,441.28'  
 E = 281.29'  
 e = \_\_\_\_\_  
 T.R. = \_\_\_\_\_  
 S.E. RUN = \_\_\_\_\_  
 P.C. STA. = 21+69.74  
 P.T. STA. = 46+11.02



EXIST. CURVE 2  
 PI STA. = 101+50.75  
 $\Delta = 39^\circ 42' 50''$  (RT)  
 D = 2° 00' 00"  
 R = 2,864.79'  
 T = 1,034.60'  
 L = 1,985.69'  
 E = 181.10'  
 e = \_\_\_\_\_  
 T.R. = \_\_\_\_\_  
 S.E. RUN = \_\_\_\_\_  
 P.C. STA. = 91+16.15  
 P.T. STA. = 111+01.84



MODEL: Default  
 FILE: h:\m\c\p\170100\170100.dwg  
 PROJECT: 0672129\CADD\DATA\CAD\sheet\0672129-sh-ATB.dwg

USER NAME = Default	DESIGNED - _____	REVISED - _____
	DRAWN - _____	REVISED - _____
PLOT SCALE = 400,0000' / in.	CHECKED - _____	REVISED - _____
PLOT DATE = 12/12/2019	DATE - _____	REVISED - _____

**STATE OF ILLINOIS  
 DEPARTMENT OF TRANSPORTATION**

<b>ALIGNMENT SHEETS</b>			
SCALE: 1" = 200'	SHEET 1	OF 5 SHEETS	STA. 16+40.03 TO STA. 138+00.00

F.A.I. RTE.	SECTION	COUNTY	TOTAL SHEETS	SHEET NO.
172	CJS - ADAMS CO - 2019	ADAMS	12	8
CONTRACT NO. 72L29				
ILLINOIS FED. AID PROJECT				





MATCH LINE  
STA. 138+00.00

MATCH LINE  
STA. 200+00.00

EXIST. CURVE 3  
PI STA. = 164+61.07  
 $\Delta$  = 60° 58' 57" (LT)  
D = 2° 00' 00"  
R = 2,864.79'  
T = 1,686.90'  
L = 3,049.12'  
E = 459.76'  
e = \_\_\_\_\_  
T.R. = \_\_\_\_\_  
S.E. RUN = \_\_\_\_\_  
P.C. STA. = 147+74.17  
P.T. STA. = 178+23.29

EXIST. CURVE 4  
PI STA. = 201+99.49  
 $\Delta$  = 21° 20' 07" (RT)  
D = 1° 00' 00"  
R = 5,729.57'  
T = 1,079.27'  
L = 2,133.54'  
E = 100.76'  
e = \_\_\_\_\_  
T.R. = \_\_\_\_\_  
S.E. RUN = \_\_\_\_\_  
P.C. STA. = 191+20.22  
P.T. STA. = 212+53.76

EXIST. CURVE 4  
PI STA. = 201+99.49  
 $\Delta$  = 21° 20' 07" (RT)  
D = 1° 00' 00"  
R = 5,729.57'  
T = 1,079.27'  
L = 2,133.54'  
E = 100.76'  
e = \_\_\_\_\_  
T.R. = \_\_\_\_\_  
S.E. RUN = \_\_\_\_\_  
P.C. STA. = 191+20.22  
P.T. STA. = 212+53.76



MATCH LINE  
STA. 200+00.00

MATCH LINE  
STA. 258+00.00

TR 551  
90° 07' 57"  
TR 551  
POT#61111 Sta. 100+00.00=  
POT Sta 231+05.39

PT Sta 212+53.76

PT Sta 225+57.49

PT Sta 248+00.18

205

210

215

220

225

230

235

240

245

250

255

MODEL: Default  
FILE: M:\GIS\Projects\729\CADD\Drawings\DOT\Office\Drawings\6\Projects\729\CADD\Drawings\DOT\Office\Drawings\6\729-Sub-ATB.dgn

USER NAME = Default	DESIGNED - _____	REVISED - _____
	DRAWN - _____	REVISED - _____
PLOT SCALE = 400.0000' / in.	CHECKED - _____	REVISED - _____
PLOT DATE = 12/12/2019	DATE - _____	REVISED - _____

STATE OF ILLINOIS  
DEPARTMENT OF TRANSPORTATION

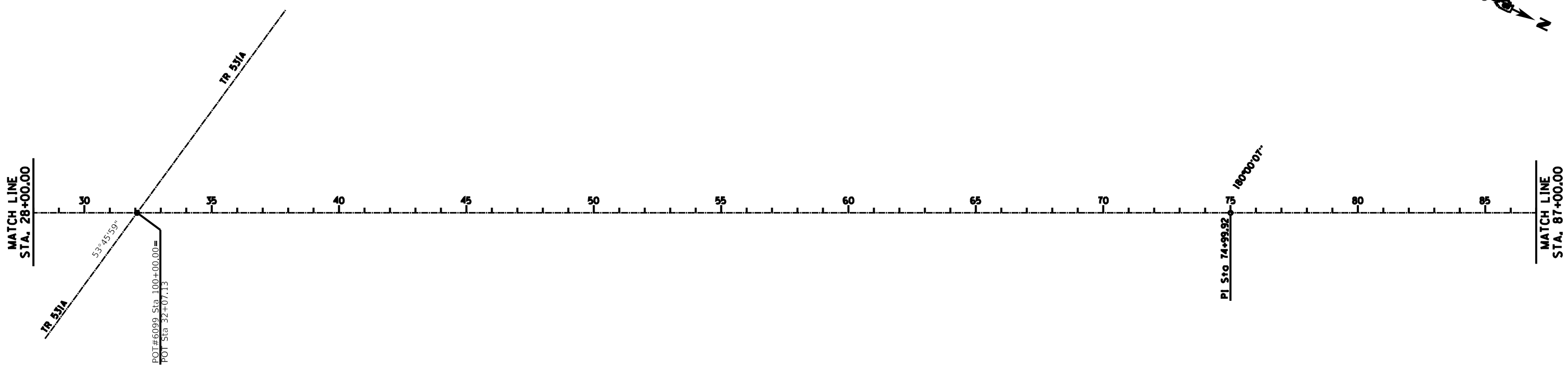
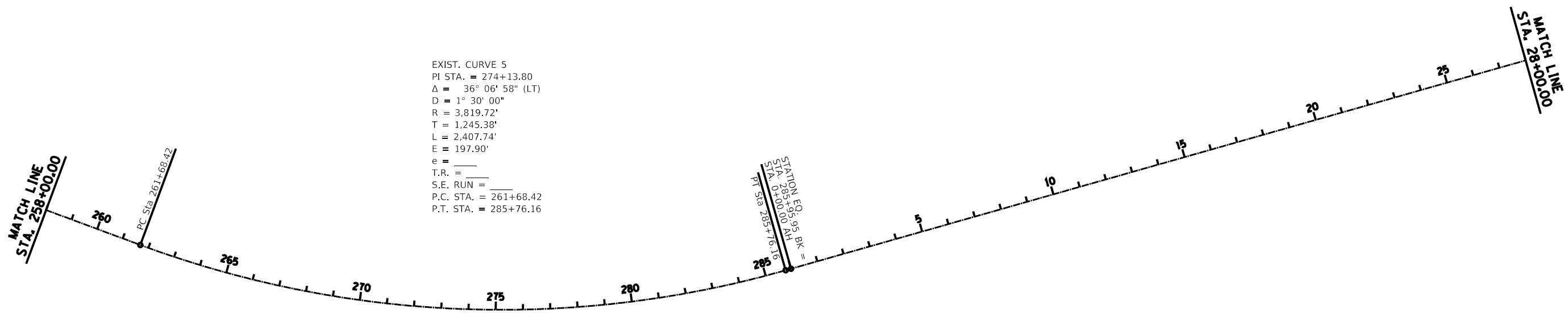
ALIGNMENT SHEETS

SCALE: 1" = 200' SHEET 2 OF 5 SHEETS STA. 138+00.00 TO STA. 258+00.00

F.A.I. RTE.	SECTION	COUNTY	TOTAL SHEETS	SHEET NO.
172	CJS - ADAMS CO - 2019	ADAMS	12	9
CONTRACT NO. 72L29				
ILLINOIS FED. AID PROJECT				



EXIST. CURVE 5  
 PI STA. = 274+13.80  
 $\Delta = 36^\circ 06' 58''$  (LT)  
 $D = 1^\circ 30' 00''$   
 $R = 3,819.72'$   
 $T = 1,245.38'$   
 $L = 2,407.74'$   
 $E = 197.90'$   
 $e =$   
 $T.R. =$   
 $S.E. RUN =$   
 $P.C. STA. = 261+68.42$   
 $P.T. STA. = 285+76.16$



MODEL: Default  
 FILE: Mainfile.dwg  
 PROJECT: C:\Users\jbaron\OneDrive\Documents\DOT Office\Drawings\72L29\CADD\Drawings\72L29\Sheet\ATB.dwg

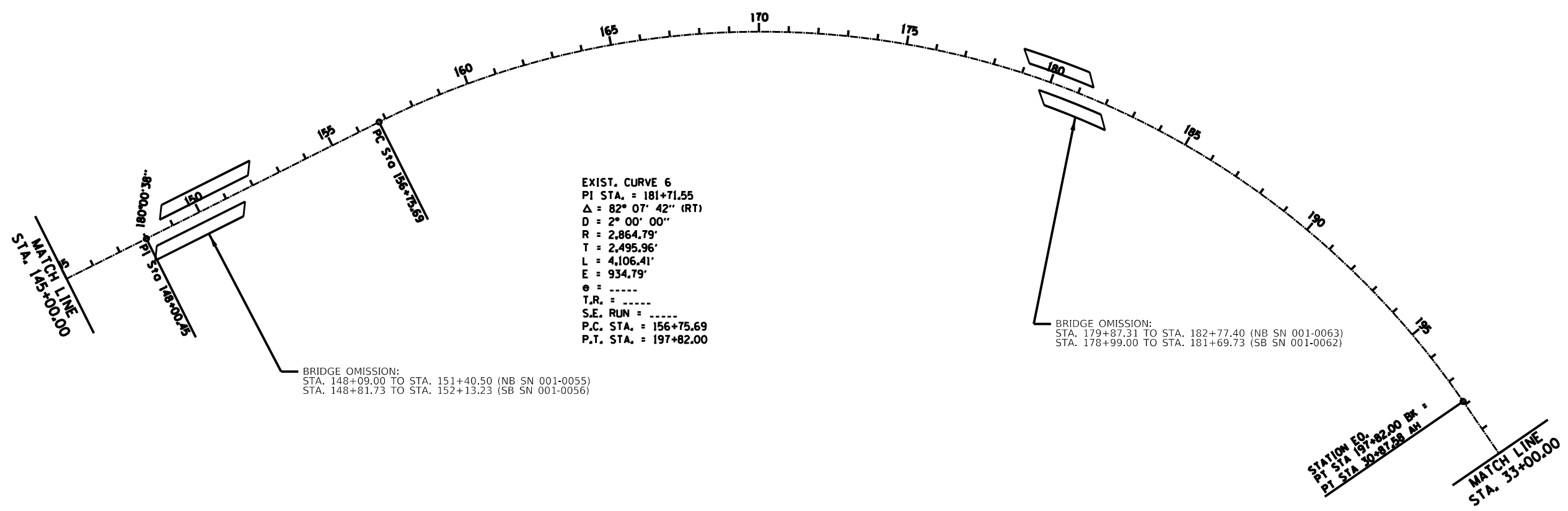
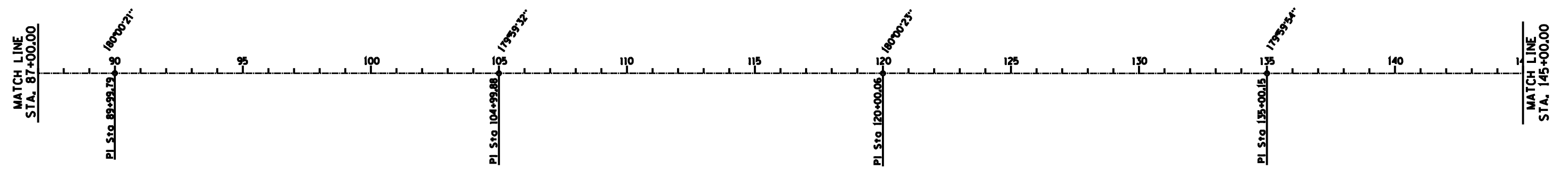
USER NAME = Default	DESIGNED - _____	REVISED - _____
PLOT SCALE = 400,0000 ' / in.	DRAWN - _____	REVISED - _____
PLOT DATE = 12/12/2019	CHECKED - _____	REVISED - _____
	DATE - _____	REVISED - _____

**STATE OF ILLINOIS  
 DEPARTMENT OF TRANSPORTATION**

**ALIGNMENT SHEETS**

SCALE: 1" = 200'    SHEET 3    OF 5 SHEETS    STA. 258+00.00    TO STA. 87+00.00

F.A.I. RTE.	SECTION	COUNTY	TOTAL SHEETS	SHEET NO.
172	CJS - ADAMS CO - 2019	ADAMS	12	10
CONTRACT NO. 72L29			ILLINOIS FED. AID PROJECT	



EXIST. CURVE 6  
 PI STA. = 181+71.55  
 $\Delta = 82^\circ 07' 42''$  (RT)  
 $D = 2^\circ 00' 00''$   
 $R = 2,864.79'$   
 $T = 2,495.96'$   
 $L = 4,106.41'$   
 $E = 934.79'$   
 $e = \text{-----}$   
 $T.R. = \text{-----}$   
 $S.E. \text{ RUN} = \text{-----}$   
 P.C. STA. = 156+75.69  
 P.T. STA. = 197+82.00

BRIDGE OMISSION:  
 STA. 148+09.00 TO STA. 151+40.50 (NB SN 001-0055)  
 STA. 148+81.73 TO STA. 152+13.23 (SB SN 001-0056)

BRIDGE OMISSION:  
 STA. 179+87.31 TO STA. 182+77.40 (NB SN 001-0063)  
 STA. 178+99.00 TO STA. 181+69.73 (SB SN 001-0062)

STATION EQ.  
 PT STA 197+82.00 Bk 1  
 PI STA 30+97.68 AH

MODEL: Default  
 FILE: Mainfile.ctb  
 PROJECT: C:\Users\jbaron\OneDrive\Documents\DOT Office\Drawings\Projects\0672129\CADD\Drawings\0672129-29-ATB.dwg

USER NAME = Default	DESIGNED - _____	REVISED - _____
PLOT SCALE = 400,0000' / in.	DRAWN - _____	REVISED - _____
PLOT DATE = 12/12/2019	CHECKED - _____	REVISED - _____
	DATE - _____	REVISED - _____

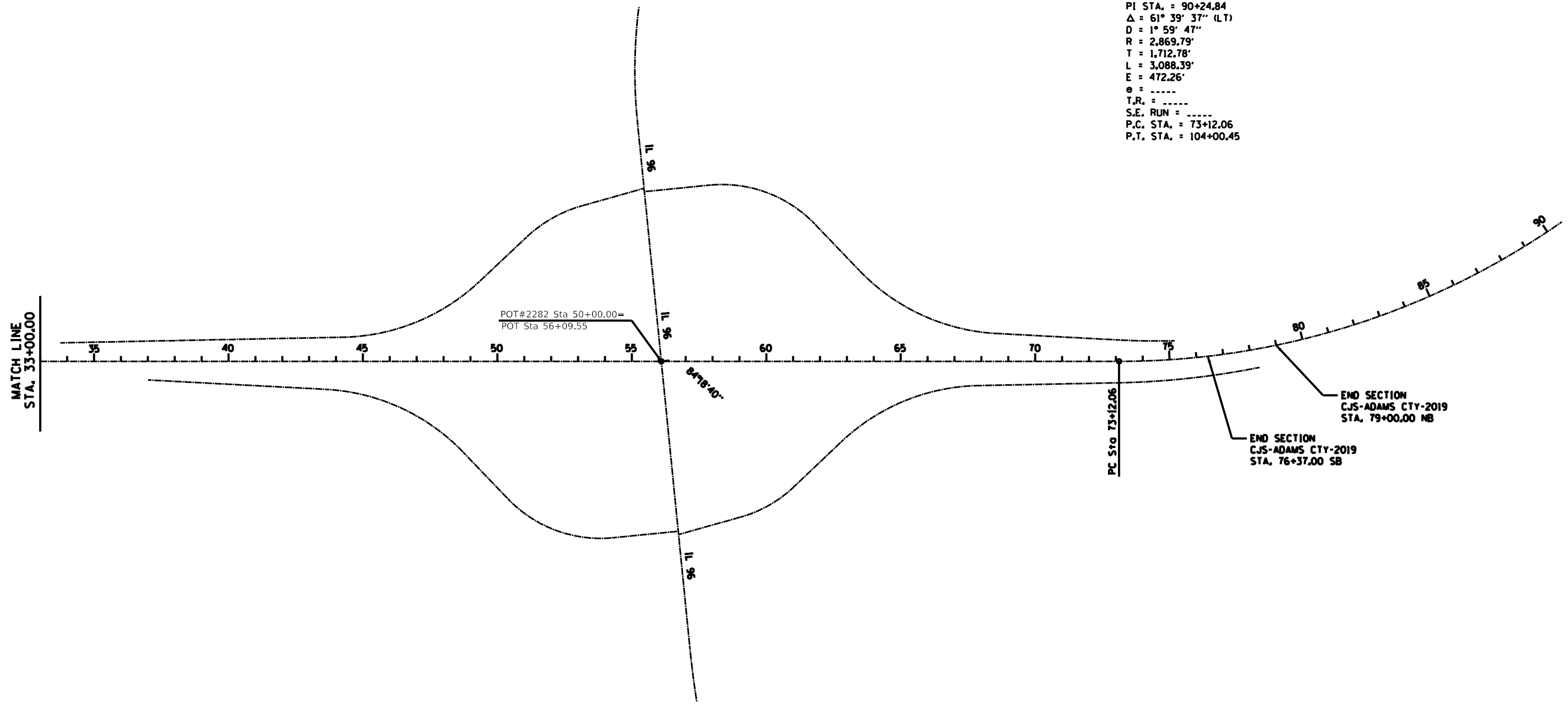
**STATE OF ILLINOIS  
 DEPARTMENT OF TRANSPORTATION**

<b>ALIGNMENT SHEETS</b>			
SCALE: 1" = 200'	SHEET 4	OF 5 SHEETS	STA. 87+00.00 TO STA. 33+00.00

F.A.I. RTE.	SECTION	COUNTY	TOTAL SHEETS	SHEET NO.
172	CJS - ADAMS CO - 2019	ADAMS	12	11
CONTRACT NO. 72L29				
ILLINOIS FED. AID PROJECT				



EXIST. CURVE 7  
 PI STA. = 90+24.84  
 $\Delta = 61^\circ 39' 37''$  (LT)  
 $D = 1^\circ 59' 47''$   
 $R = 2,869.79'$   
 $T = 1,712.78'$   
 $L = 3,088.39'$   
 $E = 472.26'$   
 $e = \text{-----}$   
 $T.R. = \text{-----}$   
 $S.E. \text{ RUN} = \text{-----}$   
 P.C. STA. = 73+12.06  
 P.T. STA. = 104+00.45



MODEL: Default  
 FILE: \\blm1c1.pw.us.ibm.com\data\illinois\pwr\WIDOT\Documents\IBDOT\_Offices\IBDOT\Projects\0672L29\CADD\data\CAD\sheets\0672L29-sh-ATB.dgn

USER NAME = Default	DESIGNED - _____	REVISED - _____
	DRAWN - _____	REVISED - _____
PLOT SCALE = 400,0000 ' / in.	CHECKED - _____	REVISED - _____
PLOT DATE = 12/12/2019	DATE - _____	REVISED - _____

**STATE OF ILLINOIS  
 DEPARTMENT OF TRANSPORTATION**

<b>ALIGNMENT</b>			
SCALE: 1" = 200'	SHEET 5	OF 5 SHEETS	STA. 33+00.00 TO STA. 79+00.00

F.A.I. RTE.	SECTION	COUNTY	TOTAL SHEETS	SHEET NO.
172	CJS - ADAMS CO - 2019	ADAMS	12	12
CONTRACT NO. 72L29				
ILLINOIS FED. AID PROJECT				