

094

03-06-2020 LETTING ITEM 094

STATE OF ILLINOIS
DEPARTMENT OF TRANSPORTATION

F.A.P. NO.	SECTION	COUNTY	TOTAL SHEETS	SHEET NO.
674	30-1BR-2	ST. CLAIR	29	1
		ILLINOIS	CONTRACT NO. 76N38	

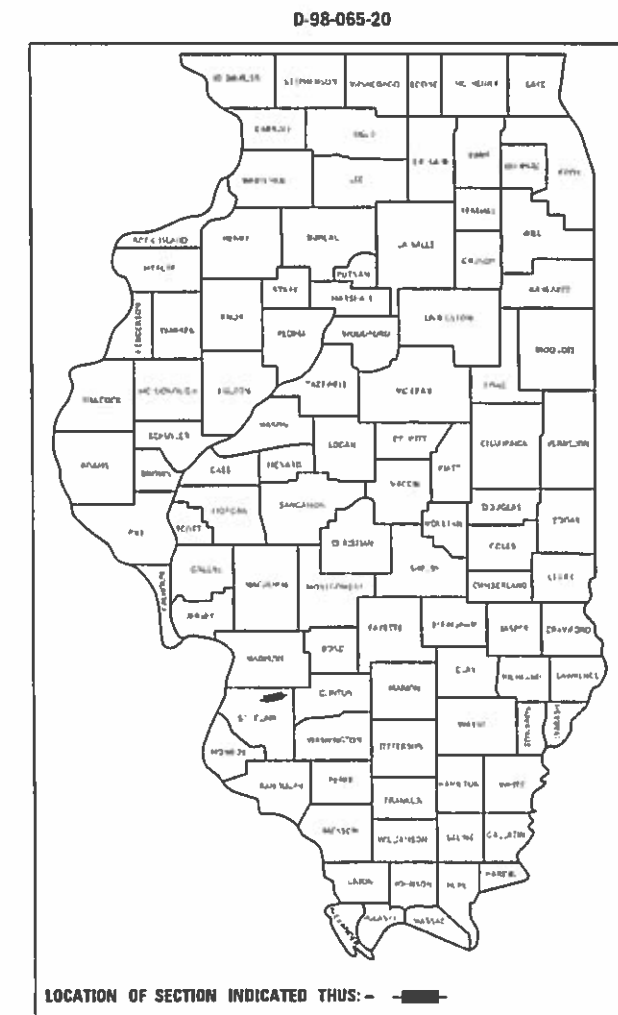
FOR INDEX OF SHEETS, SEE SHEET NO. 2

PROPOSED HIGHWAY PLANS

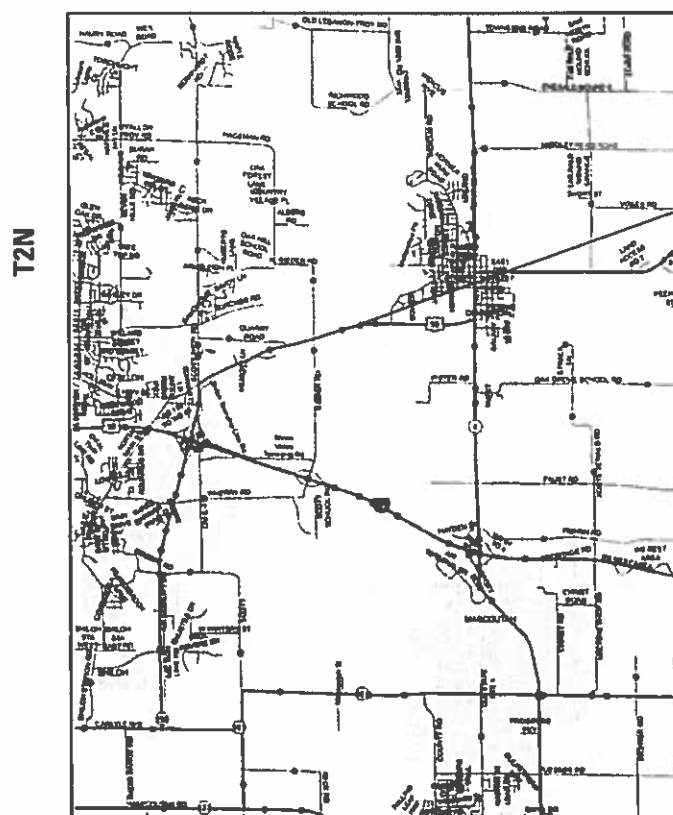
FAP ROUTE 674 (US 50)
SECTION 30-1BR-2
PROJECT NHPP-V8NL(070)
BRIDGE REPAIRS & HMA OVERLAY
ST. CLAIR COUNTY
C-98-079-20

TRAFFIC DATA

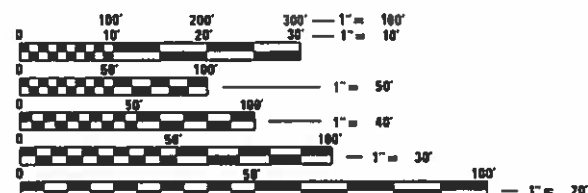
2019 ADT: 14900 (ACTUAL)
2020 ADT: 15000 (ESTIMATED)
MU%: 4.55
SU%: 4.5



R7W



SN 082-0036
STA. 228+74.79
183'-7 1/4" BK TO BK OF ABUTMENT
3 SPAN CONTINUOUS WIDE FLANGE SUPPORTED
ON PILE BENT ABUTMENTS AND PIERS
LAT.: 38.59411
LONG.: -89.83530



FULL SIZE PLANS HAVE BEEN PREPARED USING STANDARD ENGINEERING SCALES. REDUCED SIZED PLANS WILL NOT CONFORM TO STANDARD SCALES. IN MAKING MEASUREMENTS ON REDUCED PLANS, THE ABOVE SCALES MAY BE USED.

J.U.L.I.E.
JOINT UTILITY LOCATION INFORMATION FOR EXCAVATORS
1-800-892-0123
OR 811

PROJECT ENGINEER: HERVE GELIN (618) 346-3179
PROJECT MANAGER: BILLIE OWEN (618) 346-3209

CONTRACT NO. 76N38

NOT TO SCALE

GROSS / NET LENGTH = 183.60 FT. = 0.035 MILE

STATE OF ILLINOIS
DEPARTMENT OF TRANSPORTATION

SUBMITTED *Dec 2 2019*
Keith Roberts
REGIONAL ENGINEER

Jan 31 2020
E.A. etc
ENGINEER OF DESIGN AND ENVIRONMENT

Jan 31 2020
Jam... 13
DIRECTOR OF HIGHWAYS PROJECT IMPLEMENTATION

PRINTED BY THE AUTHORITY
OF THE STATE OF ILLINOIS

INDEX OF SHEETS

- 1 COVER
- 2 INDEX OF SHEETS, HIGHWAY STANDARDS, MIXTURE REQUIREMENTS, GENERAL NOTES, & COMMITMENTS
- 3-6 SUMMARY OF QUANTITIES
- 7 TYPICALS
- 8 SCHEDULE OF QUANTITIES
- 9-10 PLAN SHEETS
- 11-17 STAGING PLAN SHEETS
- 18 WIDE LOAD SIGNING
- 19-29 STRUCTURE PLANS

HIGHWAY STANDARDS

- 000001-07 STANDARD SYMBOLS, ABBREVIATIONS AND PATTERNS
- 001001-02 AREAS OF REINFORCEMENT BARS
- 001006 DECIMAL OF AN INCH AND OF A FOOT
- 701311-03 LANE CLOSURE, 2L, 2W, MOVING OPERATIONS DAY ONLY, FOR SPEEDS \geq 45 MPH
- 701321-18 LANE CLOSURE, 2L, 2W, BRIDGE REPAIR W/ BARRIER
- 701326-04 LANE CLOSURE, 2L, 2W, PAVEMENT WIDENING FOR SPEEDS \geq 45 MPH
- 701901-08 TRAFFIC CONTROL DEVICES
- 704001-08 TEMPORARY CONCRETE BARRIER
- 780001-05 TYPICAL PAVEMENT MARKINGS
- 781001-04 TYPICAL APPLICATIONS RAISED REFLECTIVE PAVEMENT MARKERS

MIXTURE REQUIREMENTS

MIXTURE USE	POLY SURFACE	BASE COURSE WIDENING
AC/PG	SBS PG 76-22	SBS PG 64-22
RAP % (MAX)	SEE SPECIAL PROVISION	SEE SPECIAL PROVISION
DESIGN AIR VOIDS	4.0% @ Ndes=90	4.0% @ Ndes=70
MIX COMPOSITION (GRADATION)	IL 9.5	IL 19.0
FRICTION AGG	MIXTURE "D"	MIXTURE "B"
QUALITY MGMT PROGRAM	QC/QA	QC/QA

PLAN QUANTITIES FOR HOT-MIX ASPHALT SURFACE COURSE ITEMS ARE CALCULATED USING A UNIT WEIGHT OF 112 LB/SQ YD./IN.

GENERAL NOTES

- ILLINOIS STATE LAW REQUIRES A 48-HOUR NOTICE TO BE GIVEN TO UTILITIES BEFORE DIGGING. FIELD MARKING OF FACILITIES MAY BE OBTAINED BY CONTACTING J.U.L.I.E. (1-800-892-0123 OR 811) OR FOR NON-MEMBERS THE UTILITY COMPANY DIRECTLY.
- THE CONTRACTOR AND THE ENGINEER SHALL BE AWARE THAT NO SURVEY WAS PERFORMED FOR THIS PROJECT. THE STATIONING, TOPOGRAPHY, AND QUANTITIES SHOWN IN THE PLANS WERE CREATED USING MICROFILM AND FIELD MEASUREMENTS. ALL SHALL BE ASSUMED TO BE APPROXIMATE. THE CONTRACTOR SHALL VERIFY DIMENSIONS AND CONDITIONS IN THE FIELD PRIOR TO CONSTRUCTION AND ORDERING OF MATERIALS.
- THE BASE OF THE TEMPORARY CONCRETE BARRIER SHALL BE PAINTED WITH THE APPROPRIATE LANE MARKING COLOR AND THE COST SHALL BE INCLUDED IN THE COST OF TEMPORARY CONCRETE BARRIER.
- IF THE CONTRACTOR, FOR HIS CONSTRUCTION ACTIVITY, REMOVES TREES WITHIN THE RIGHT-OF-WAY LIMITS WHICH ARE NOT DESIGNATED ON THE PLANS FOR REMOVAL, I.E. IN ORDER TO GAIN ACCESS TO THE PROJECT SITE; IT SHALL BE HIS RESPONSIBILITY TO REPLACE THE TREES AT A 1:1 RATIO. THE TREES SHALL BE REPLACED WITH A 1 GALLON NATIVE ILLINOIS TREE SPECIES AND SHALL BE APPROVED BY THE ENGINEER. THE TREE REMOVAL AND TREE REPLACEMENT SHALL BE AT THE CONTRACTOR'S EXPENSE, AND NO ADDITIONAL COMPENSATION SHALL BE ALLOWED.
- THE RESIDENT ENGINEER WILL VERIFY THE EXISTENCE OF HIGHWAY LIGHTING AND/OR INTELLIGENT TRANSPORTATION SYSTEMS (I.T.S.) UTILITIES WITHIN THE PROJECT LIMITS. IF HIGHWAY LIGHTING AND/OR I.T.S. EXISTS WITHIN THE PROJECT LIMITS, AND IF THESE ITEMS REQUIRE LOCATING, THE CONTRACTOR SHALL BE DIRECTED TO DO SO ACCORDING TO SECTION 803 OF THE STANDARD SPECIFICATIONS.
- TWO CHANGEABLE MESSAGE BOARDS SHALL BE REQUIRED FOR THIS PROJECT. THEY SHALL BE PLACED 2 WEEKS PRIOR TO ANY LANE CLOSURE AND SHALL REMAIN UP FOR THE DURATION OF THE PROJECT. THE CHANGEABLE MESSAGE BOARDS WILL BE PLACED AT THE DIRECTION OF THE ENGINEER.
- THE CONTRACTOR SHALL PROVIDE POSITIVE AND ADEQUATE DRAINAGE AT ALL TIMES.
- THE DEPARTMENT STRONGLY ENCOURAGES THE PRIME CONTRACTOR AND THEIR APPROVED SUB-CONTRACTORS TO HIRE MINORITY, WOMEN AND DISADVANTAGED INDIVIDUALS FROM ITS FEDERALLY FUNDED HIGHWAY CONSTRUCTION CAREERS TRAINING PROGRAM (HCCTP) TO HELP MEET WORKFORCE AND TRAINEE GOALS. THIS PROGRAM IS TRAINING MINORITIES, WOMEN AND DISADVANTAGED INDIVIDUALS IN HIGHWAY CONSTRUCTION-RELATED SKILLS, E.G., MATH FOR THE TRADES, JOB READINESS, TECHNICAL SKILLS COURSEWORK (CARPENTRY, CONCRETE FLATWORK, BLUEPRINT READING, SITE PLANS, SITE WORK, TOOLS USE, ETC.) AND OSHA 10 HOUR CERTIFICATION, TO PREPARE THEM FOR A CAREER IN THE HIGHWAY CONSTRUCTION TRADES. GRADUATES ARE WELL-TRAINED AND READY TO BECOME PRODUCTIVE ENTRY-LEVEL CONSTRUCTION WORKERS. CONTACT THE DISTRICT 8 EEO OFFICE AT 618-346-3360 AND/OR THE HCCTP COORDINATOR AT 618-874-6528 TO LEARN MORE ABOUT THE PROGRAM AND FOR ASSISTANCE IN MEETING WORKFORCE AND TRAINEE GOALS.
- THE CONTRACTOR SHALL TAKE CARE TO ENSURE HIS CONSTRUCTION ACTIVITIES DO NOT CAUSE ANY DAMAGE TO THE GUARDRAIL.
- ALL AREAS DISTURBED FOR ANY REASON SHALL BE PERMANENTLY SEEDED WITH CLASS 2A SEED, FERTILIZED AND MULCHED AS PER SECTION 250.04 OF THE STANDARD SPECIFICATIONS AND AS DIRECTED BY THE ENGINEER. FINAL SEEDING SHALL BE PERFORMED AS SOON AS POSSIBLE. THE COST FOR PERFORMING THIS WORK SHALL BE CONSIDERED INCLUDED IN THE UNIT PRICE BID FOR THE ITEM OF WORK INITIATING THE DISTURBANCE. ALL AREAS DISTURBED BY THE CONTRACTOR OUTSIDE THE PROPOSED CONSTRUCTION LIMITS SHALL BE SEEDED AT THE CONTRACTOR'S EXPENSE AND NO ADDITIONAL COMPENSATION SHALL BE ALLOWED.

COMMITMENTS

NONE

MODEL: I:\MODEL\MHFS FILE: MHFS_Plan\HighwayStandards\DOT - Offices\District 8\Projects\0876A3B\CADD\data\CAD\cherecs\0876A3B-sh-cgenmode.dgn

USER NAME = manntm	DESIGNED -	REVISED -
	DRAWN -	REVISED -
PLOT SCALE = 100.0000 ' / in.	CHECKED -	REVISED -
PLOT DATE = 11/27/2019	DATE -	REVISED -

**STATE OF ILLINOIS
DEPARTMENT OF TRANSPORTATION**

INDEX OF SHEETS, HIGHWAY STANDARDS, MIXTURE REQUIREMENTS, GENERAL NOTES, & COMMITMENTS

SCALE: NA SHEET 1 OF 1 SHEETS STA. TO STA.

F.A.P. RTE.	SECTION	COUNTY	TOTAL SHEETS	SHEET NO.
674	121-BR-1	RANDOLPH	29	2
CONTRACT NO. 76K65				
		ILLINOIS	FED. AID PROJECT	

CONSTR. CODE
80 FED/20 STATE
URBAN
BRIDGE
0047
082-0036

CODE NO.	ITEM	UNIT	TOTAL QUANTITY	
* 6310089	TRAFFIC BARRIER TERMINAL, TYPE 6B	EACH	1	1
67000400	ENGINEER'S FIELD OFFICE, TYPE A	CAL MO	4	4
67100100	MOBILIZATION	L SUM	1	1
70100405	TRAFFIC CONTROL AND PROTECTION, STANDARD 701321	EACH	1	1
70100500	TRAFFIC CONTROL AND PROTECTION, STANDARD 701326	L SUM	1	1
70106500	TEMPORARY BRIDGE TRAFFIC SIGNALS	EACH	1	1
70106700	TEMPORARY RUMBLE STRIPS	EACH	6	6
70107004	PAVEMENT MARKING BLACKOUT TAPE, 4"	FOOT	3234	3234
70107025	CHANGEABLE MESSAGE SIGN	CAL DA	108	108
70300100	SHORT TERM PAVEMENT MARKING	FOOT	81	81
70300150	SHORT TERM PAVEMENT MARKING REMOVAL	SQ FT	1106	1106
70300220	TEMPORARY PAVEMENT MARKING - LINE 4"	FOOT	3234	3234
70400100	TEMPORARY CONCRETE BARRIER	FOOT	512.5	512.5
70400200	RELOCATE TEMPORARY CONCRETE BARRIER	FOOT	502.5	502.5

*** SPECIALTY ITEM**

USER NAME = manntm	DESIGNED -	REVISED -
	DRAWN -	REVISED -
PLOT SCALE = 100.0000' / in.	CHECKED -	REVISED -
PLOT DATE = 12/2/2019	DATE -	REVISED -

**STATE OF ILLINOIS
DEPARTMENT OF TRANSPORTATION**

SUMMARY OF QUANTITIES

SCALE: NONE SHEET 2 OF 4 SHEETS STA. TO STA.

F.A.P. RTE.	SECTION	COUNTY	TOTAL SHEETS	SHEET NO.
674	30-1BR-2	ST. CLAIR	30	4
				CONTRACT NO. 76N38
		ILLINOIS	FED. AID PROJECT	

MODEL: I:\MODEL\MAR15
 FILE: MAR15_Plan\Illuminoma.dwg
 I:\Illinois\gov\PI\DOT\Documents\DOT_Offices\Dir\ctc @Projects\076A38\CADD\DATA\CAD\Sheet\076A38-11-500.dgn

MODEL: \\MODEL\MAR15
 FILE NAME: P:\pub\mcomada\illinois\gov\PIWIDOT\Documents\DOT_Offices\District_8\Projects\082-0036\CADD\DATA\CAD\Sheet\082-0036-1B-500.dgn

CODE NO.	ITEM	UNIT	TOTAL QUANTITY	CONSTR. CODE
				80 FED/20 STATE URBAN BRIDGE 0047 082-0036
70600250	IMPACT ATTENUATORS, TEMPORARY (NON- REDIRECTIVE), TEST LEVEL 3	EACH	2	2
70600350	IMPACT ATTENUATORS, RELOCATE (NON- REDIRECTIVE), TEST LEVEL 3	EACH	2	2
* 78000200	THERMOPLASTIC PAVEMENT MARKING - LINE4"	FOOT	3234	3234
* 78100100	RAISED REFLECTIVE PAVEMENT MARKER	EACH	10	10
* 78200005	GUARDRAIL REFLECTORS, TYPE A	EACH	4	4
* 78200010	BARRIER WALL REFLECTORS, TYPE B	EACH	8	8
* 78200011	BARRIER WALL REFLECTORS, TYPE C	EACH	8	8
78300200	RAISED REFLECTIVE PAVEMENT MARKER REMOVAL	EACH	10	10
X1200030	FILLING INLETS, TEMPORARY	EACH	2	2
X5870015	BRIDGE DECK CONCRETE SEALER	SQ FT	1770	1770
X7030005	TEMPORARY PAVEMENT MARKING REMOVAL	SQ FT	1079	1079
X7200200	WIDE LOAD SIGNING	L SUM	1	1
Z0001903	STRUCTURAL STEEL REMOVAL	POUND	2650	2650
Z0007101	CONTAINMENT AND DISPOSAL OF LEAD PAINT CLEANING RESIDUESNO. 1	L SUM	1	1

*** SPECIALTY ITEM**

USER NAME = manntm	DESIGNED -	REVISED -
	DRAWN -	REVISED -
PLOT SCALE = 100.0000' / in.	CHECKED -	REVISED -
PLOT DATE = 12/2/2019	DATE -	REVISED -

**STATE OF ILLINOIS
DEPARTMENT OF TRANSPORTATION**

SUMMARY OF QUANTITIES

SCALE: NONE SHEET 3 OF 4 SHEETS STA. TO STA.

F.A.P. RTE.	SECTION	COUNTY	TOTAL SHEETS	SHEET NO.
674	30-1BR-2	ST. CLAIR	30	5
CONTRACT NO. 76N38			ILLINOIS FED. AID PROJECT	

RESURFACING SCHEDULE

STATION	TO	STATION	POLY HMA SURFACE COURSE, IL-9.5, MIX "D", N90 TONS	HMA SURFACE REM BUTT JOINT SQ YDS	TEMPORARY RAMP SQ YDS	BITUMINOUS MAT'L TACK COAT POUNDS
227+23.00	TO	227+63.00	18.0	159.5	27.0	8.0
227+63.00	TO	227+83.00	9.5			4.0
227+83.00	TO	229+66.60	*			*
229+66.60	TO	229+86.60	9.5			4.0
229+86.60	TO	230+26.60	18.0	159.5	27.0	8.0
TOTAL			55.0	319.0	54.0	24.0

*SEE BRIDGE PLANS

WIDENING SCHEDULE

LT/RT	STATION	TO	STATION	PAVED SHOULDER REMOVAL SQ YD	HMA BASE COURSE WIDENING - 11" SQ YD	EARTH EXCAVATION WIDENING CUY	*BITUMINOUS MAT'L TACK COAT POUNDS	REMARKS
RT	226+17.50	TO	227+23.00	18.0	53.0	12.0	2.5	
RT	227+23.00	TO	227+65.00	7.0	29.0	7.5	1.5	
RT	227+65.00	TO	227+83.00					BRIDGE APPROACH SHOULDER
RT	229+66.60	TO	229+84.60					BRIDGE APPROACH SHOULDER
RT	229+84.60	TO	230+26.60	7.0	29.0	7.5	1.5	
RT	230+26.60	TO	231+39.00	19.0	56.0	13.0	3.0	
LT	225+82.00	TO	227+23.00	23.5	63.0	14.0	3.0	
LT	227+23.00	TO	227+65.00	7.0	26.0	6.5	1.5	
LT	227+65.00	TO	227+83.00					BRIDGE APPROACH SHOULDER
LT	229+66.60	TO	229+84.60					BRIDGE APPROACH SHOULDER
LT	229+84.60	TO	230+26.60	7.0	26.0	6.5	1.5	
LT	230+26.60	TO	231+55.75	21.5	65.0	13.0	3.5	
TOTAL				110.0	347.0	80.0	18.0	

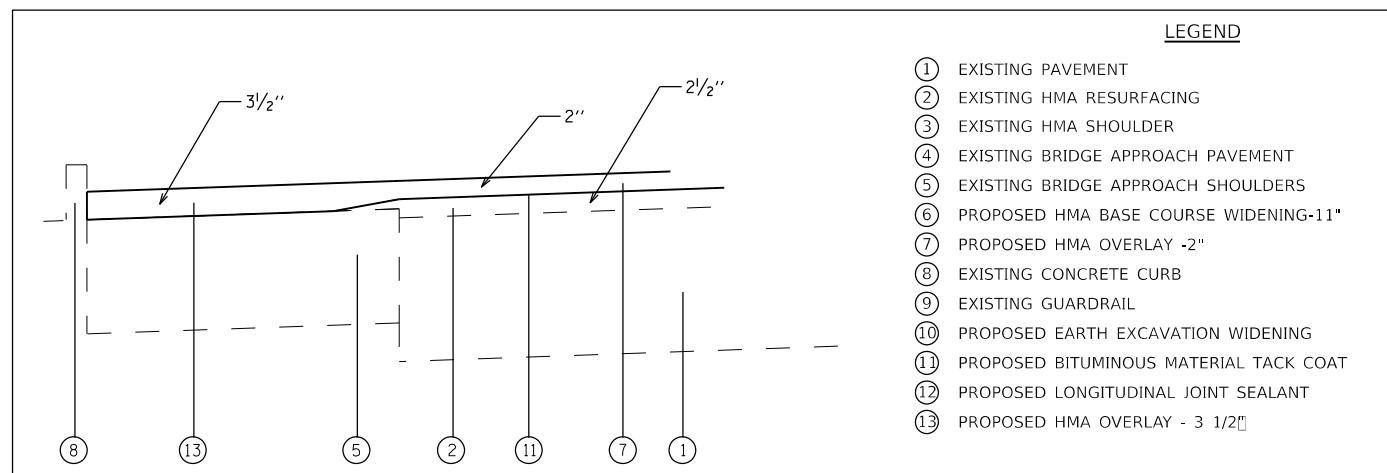
PAVEMENT MARKING SCHEDULE

STATION	TO	STATION	PAVEMENT MRKNG BLACKOUT TAPE, 4" FOOT	SHORT TERM PAVEMENT MRKNG FOOT	SHORT TERM PVMNT MRKNG REMOVAL SQ FT	TEMP PAVEMENT MARKING - LINE 4" FOOT	TEMP PAVEMENT MARKING REMOVAL SQ FT	THERMOPLASTIC PVMNT MRKNG - LINE 4 FOOT	RRPM REMOVAL EACH	RRPM EACH
224+53.00	TO	225+17.25	257.0	6.5	88.0	257.0	86.0	257.0	1.0	1.0
225+17.25	TO	230+00.00	1931.0	48.3	660.0	1931.0	644.0	1931.0	6.0	6.0
230+00.00	TO	232+61.50	1046.0	26.3	358.0	1046.0	349.0	1046.0	3.0	3.0
TOTAL			3234.0	81.0	1106.0	3234.0	1079.0	3234.0	10.0	10.0

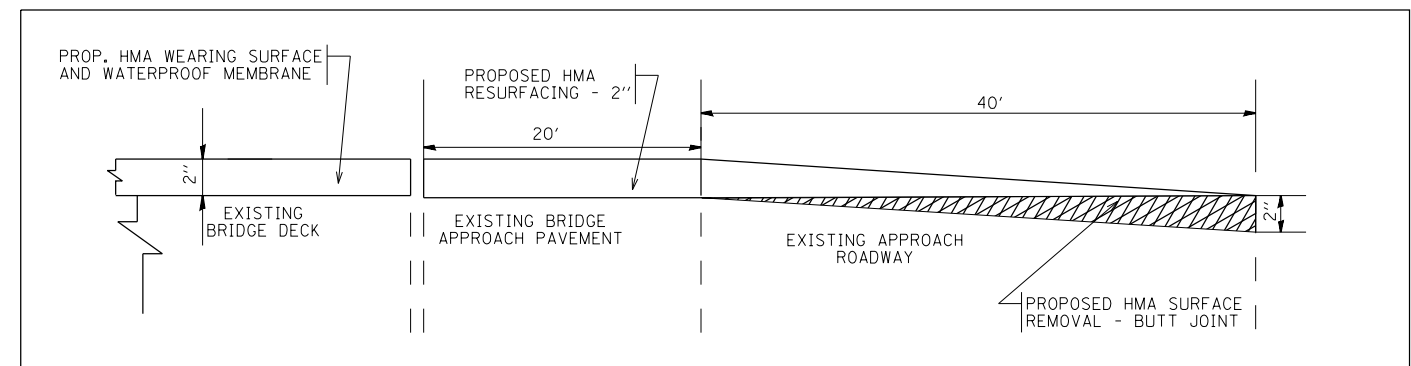
GUARDRAIL AND BARRIER MARKER SCHEDULE

STATION	TO	STATION	GUARDRAIL REFLECTORS, TY A EACH	BARRIER REFLECTORS, TY B EACH	BARRIER REFLECTORS, TY C EACH
227+23.00	TO	227+63.00	2		
227+63.00	TO	227+83.00			
227+83.00	TO	229+66.60		8	8
229+66.60	TO	229+86.60			
229+86.60	TO	230+26.60	2		
TOTAL			4	8	8

DETAIL A



HMA RESURFACING TRANSITION - DETAIL B



MODEL: I:\MODEL\HMF5 FILE: hmf5.dwg PLOT DATE: 12/2/2019

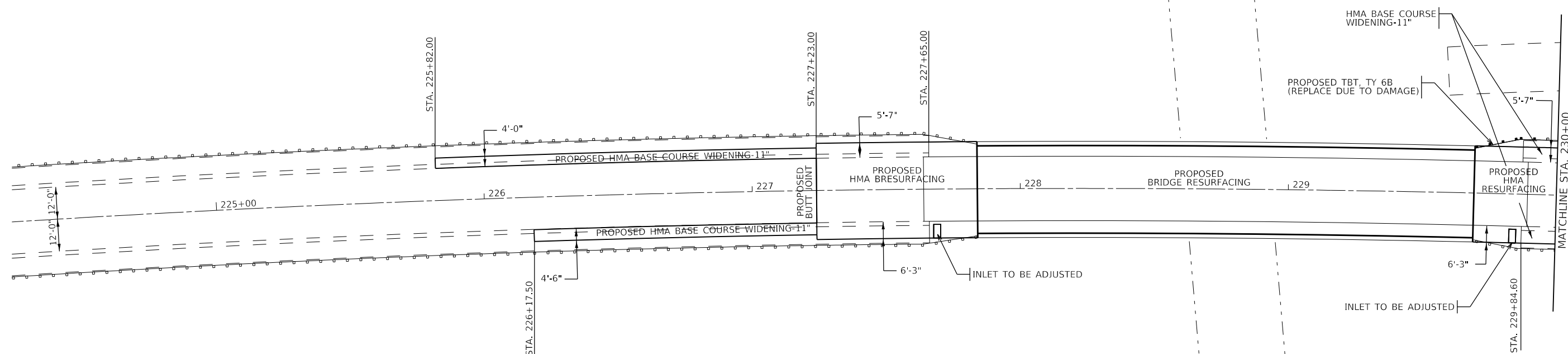
USER NAME = manntm	DESIGNED -	REVISED -
	DRAWN -	REVISED -
PLOT SCALE = 100,0000' / in.	CHECKED -	REVISED -
PLOT DATE = 12/2/2019	DATE -	REVISED -

STATE OF ILLINOIS
DEPARTMENT OF TRANSPORTATION

INDEX OF SHEETS, HIGHWAY STANDARDS, MIXTURE
REQUIREMENTS, GENERAL NOTES, & COMMITMENTS

SCALE: NA SHEET 1 OF 1 SHEETS STA. TO STA.

F.A.P. RTE.	SECTION	COUNTY	TOTAL SHEETS	SHEET NO.
674	121-BR-1	RANDOLPH	29	8
CONTRACT NO. 76K65				
ILLINOIS FED. AID PROJECT				



MODEL: s:\MODEL\MHMF
 FILE: MHMF.dwg
 PROJECT: I:\Projects\DOT\Documents\DOT_Offices\District 8\Projects\DOT\76N38\CADD\DATA\CAD\Sheet\0776N38-1-1.dwg

USER NAME = manntm	DESIGNED -	REVISED -
	DRAWN -	REVISED -
PLOT SCALE = 40.0000 ' / in.	CHECKED -	REVISED -
PLOT DATE = 12/3/2019	DATE -	REVISED -

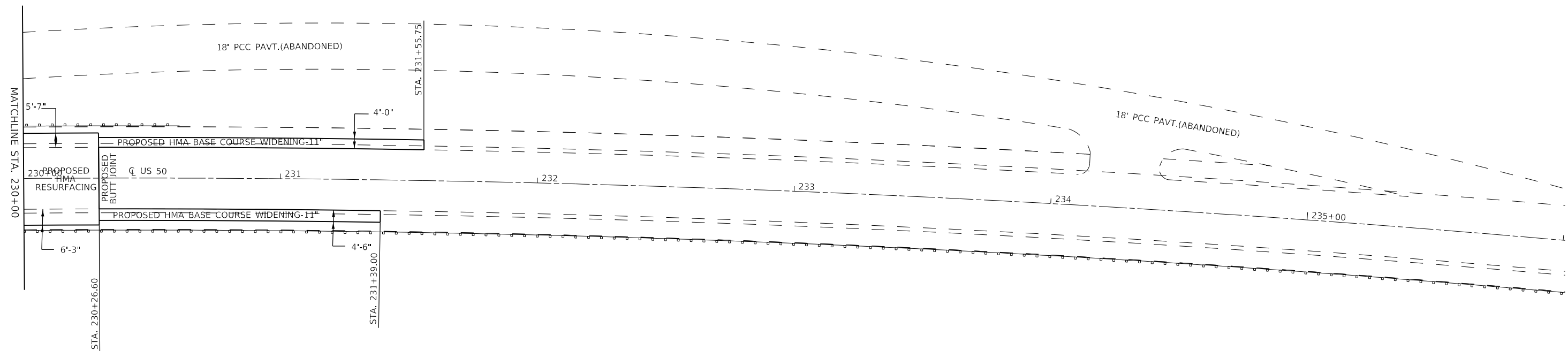
**STATE OF ILLINOIS
DEPARTMENT OF TRANSPORTATION**

PLAN VIEW			
SCALE: 1"=20'	SHEET 1	OF 2 SHEETS	STA. 225+82.00 TO STA. 230+00

F.A.P. RTE.	SECTION	COUNTY	TOTAL SHEETS	SHEET NO.
674	30-1BR-2	ST. CLAIR	29	9
CONTRACT NO. 76N38				
ILLINOIS FED. AID PROJECT				



PI Sta. 231+80.62



MODEL: s:\MODEL\NAME
 FILE: NAME.dwg
 P:\pub\mcomada\illinois.gov\RWIDOT\Documents\DOT_Offices\District 8\Projects\076A30\CADD\DATA\CAD\pieces\076A30-shc-clair.dgn

USER NAME = manntm	DESIGNED -	REVISED -
	DRAWN -	REVISED -
PLOT SCALE = 40.0000 ' / in.	CHECKED -	REVISED -
PLOT DATE = 12/3/2019	DATE -	REVISED -

**STATE OF ILLINOIS
DEPARTMENT OF TRANSPORTATION**

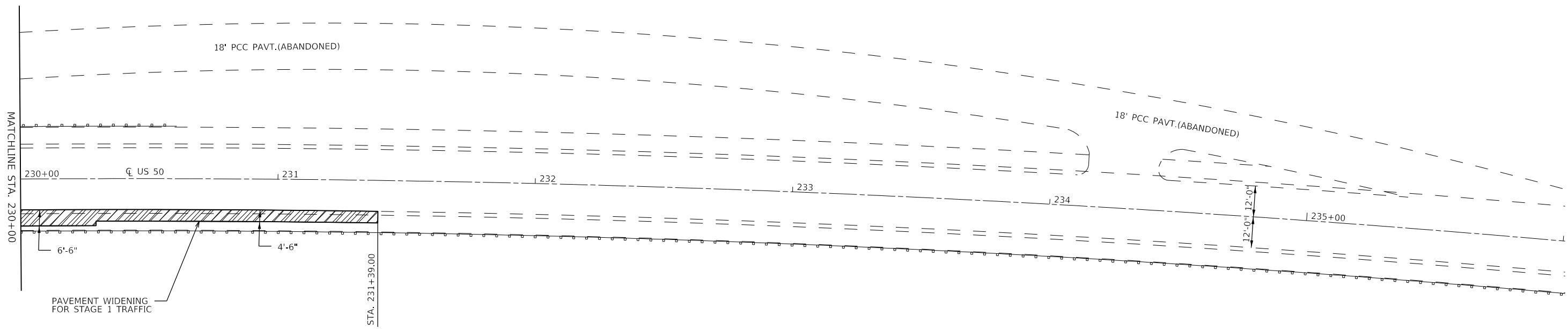
PLAN VIEW

SCALE: 1"=20' SHEET 2 OF 2 SHEETS STA. 230+00 TO STA. 231+55.75

F.A.P. RTE.	SECTION	COUNTY	TOTAL SHEETS	SHEET NO.
674	30-1BR-2	ST. CLAIR	29	10
ILLINOIS FED. AID PROJECT			CONTRACT NO. 76N38	



PI Sta. 231+80.62



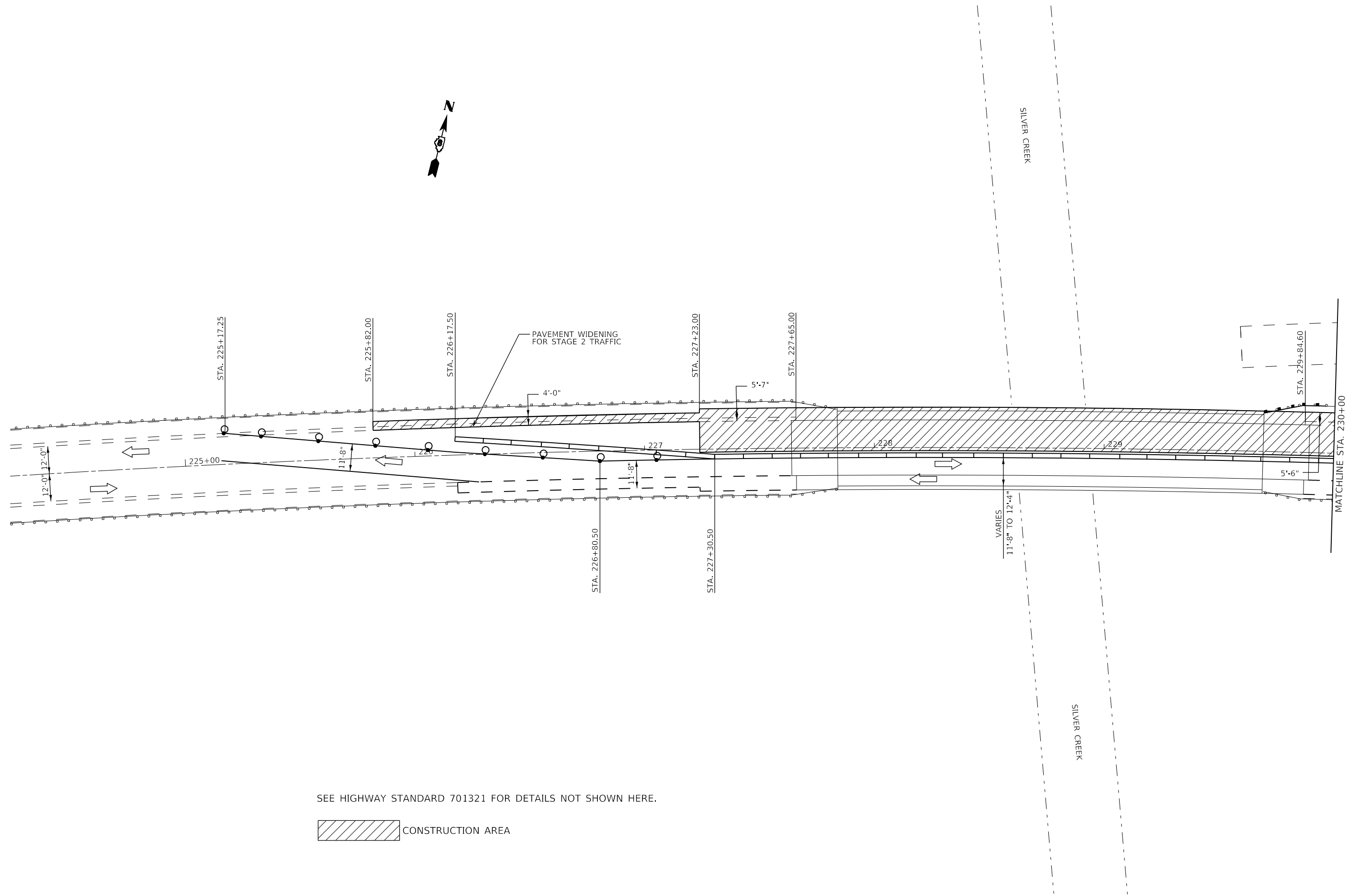
MODEL: s:\MODEL\NAME
 FILE: NAME.dwg
 PLOT DATE: 12/3/2019

USER NAME = manntm	DESIGNED -	REVISED -
PLOT SCALE = 40.0000 ' / in.	DRAWN -	REVISED -
PLOT DATE = 12/3/2019	CHECKED -	REVISED -
	DATE -	REVISED -

**STATE OF ILLINOIS
DEPARTMENT OF TRANSPORTATION**

PRE-STAGE CONSTRUCTION			
SCALE: 1"=20'	SHEET 3	OF 7 SHEETS	STA. TO STA.

F.A.P. RTE.	SECTION	COUNTY	TOTAL SHEETS	SHEET NO.
674	30-1BR-2	ST. CLAIR	29	13
CONTRACT NO. 76N38				
ILLINOIS FED. AID PROJECT				



SEE HIGHWAY STANDARD 701321 FOR DETAILS NOT SHOWN HERE.

 CONSTRUCTION AREA

MODEL: s:\MODEL\MHFS
 FILE: MHFS_Plan\p1\m1\m1.dwg
 PROJECT: I:\Projects\DOT\Office\1211\1211.dwg
 OFFICE: I:\Projects\DOT\Office\1211\1211.dwg
 DATE: 12/3/2019

USER NAME = manntm	DESIGNED -	REVISED -
	DRAWN -	REVISED -
PLOT SCALE = 40.0000 ' / in.	CHECKED -	REVISED -
PLOT DATE = 12/3/2019	DATE -	REVISED -

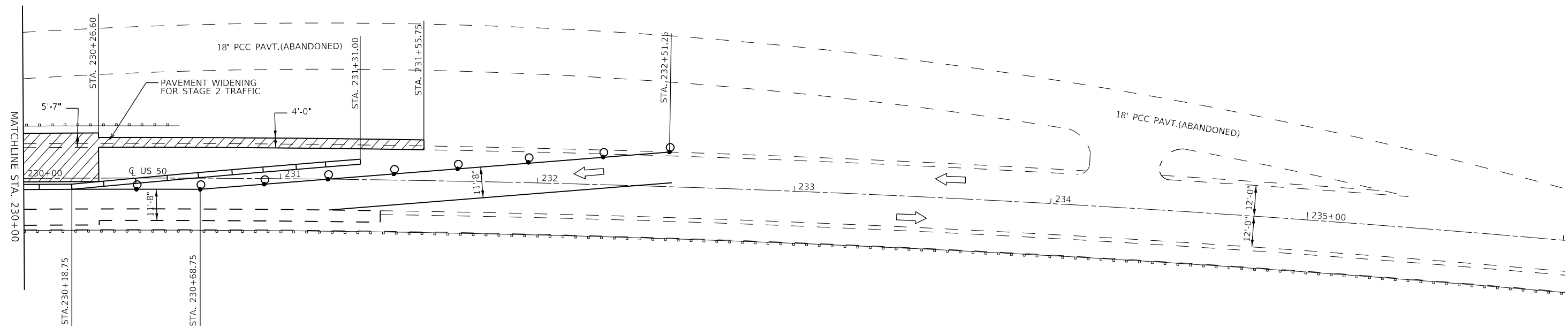
**STATE OF ILLINOIS
DEPARTMENT OF TRANSPORTATION**

STAGE 1 CONSTRUCTION	
SCALE: 1"=20'	SHEET 4 OF 7 SHEETS
STA.	TO STA.

F.A.P. RTE.	SECTION	COUNTY	TOTAL SHEETS	SHEET NO.
674	30-1BR-2	ST. CLAIR	29	14
CONTRACT NO. 76N38				
ILLINOIS FED. AID PROJECT				



PI Sta. 231+80.62



SEE HIGHWAY STANDARD 701321 FOR DETAILS NOT SHOWN HERE.



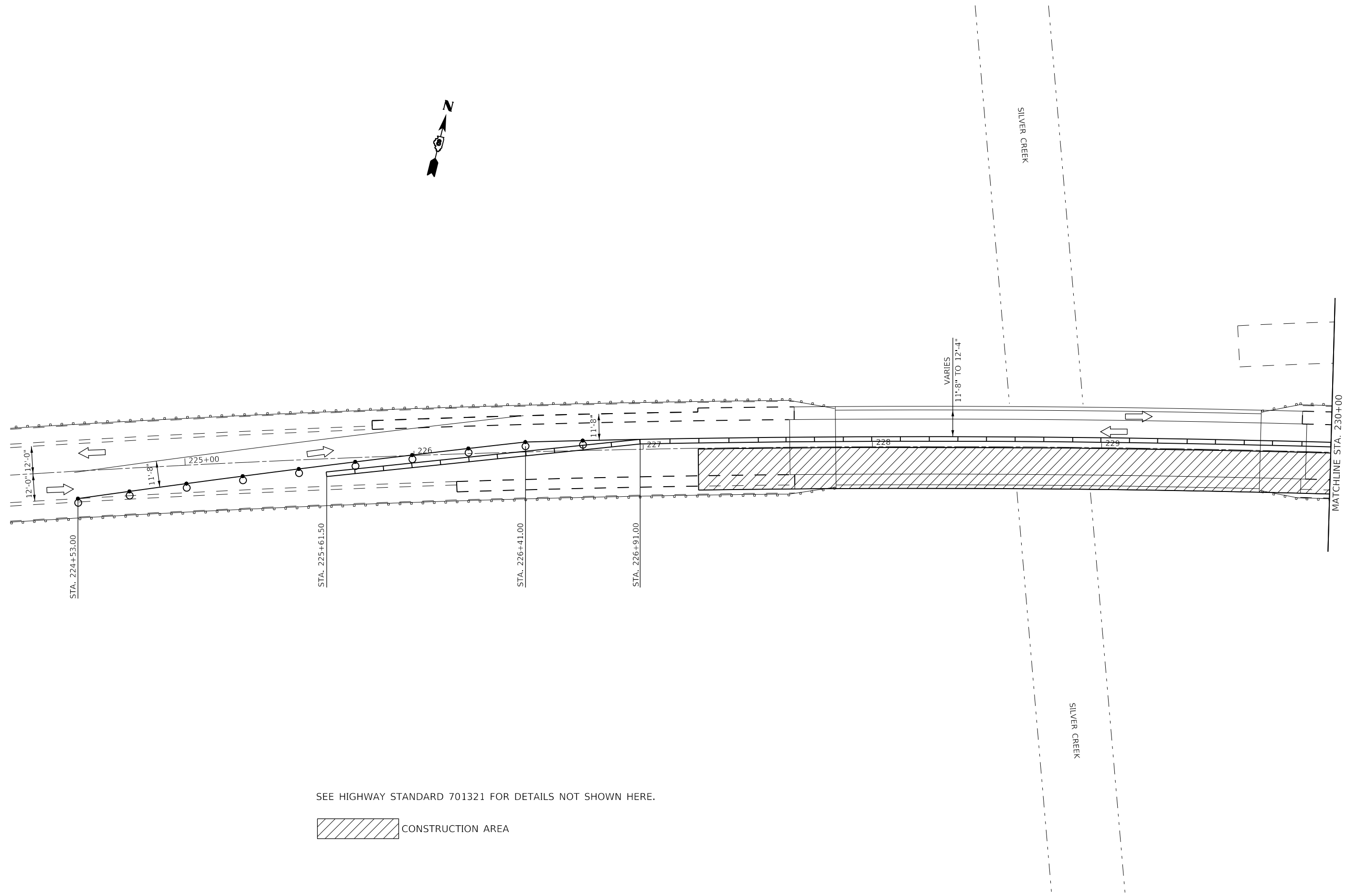
MODEL: s:\MODEL\NAME
 FILE: NAME.dwg
 P:\pub\mcomada.dwg
 I:\mcomada\illinois.gov\RWIDOT\Documents\DOT_Offices\District 8\Projects\076A38\CADD\Drawings\076A38-11R-2-15.dwg

USER NAME = manntm	DESIGNED -	REVISED -
	DRAWN -	REVISED -
PLOT SCALE = 40.0000 ' / in.	CHECKED -	REVISED -
PLOT DATE = 12/3/2019	DATE -	REVISED -

**STATE OF ILLINOIS
DEPARTMENT OF TRANSPORTATION**

STAGE 1 CONSTRUCTION			
SCALE: 1"=20'	SHEET 5	OF 7 SHEETS	STA. TO STA.

F.A.P. RTE.	SECTION	COUNTY	TOTAL SHEETS	SHEET NO.
674	30-1BR-2	ST. CLAIR	29	15
CONTRACT NO. 76N38				
ILLINOIS FED. AID PROJECT				



SEE HIGHWAY STANDARD 701321 FOR DETAILS NOT SHOWN HERE.

 CONSTRUCTION AREA

MODEL: s:\MODEL\NAME
FILE: NAME.dwg
PLOT DATE: 12/3/2019

USER NAME = manntm	DESIGNED -	REVISED -
	DRAWN -	REVISED -
PLOT SCALE = 40.0000 ' / in.	CHECKED -	REVISED -
PLOT DATE = 12/3/2019	DATE -	REVISED -

**STATE OF ILLINOIS
DEPARTMENT OF TRANSPORTATION**

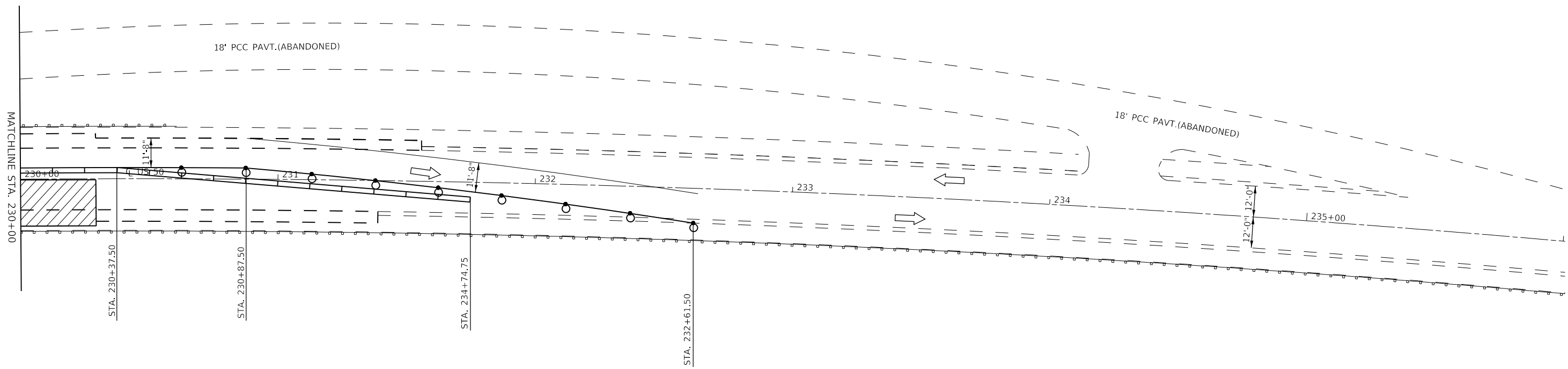
SCALE: 1"=20' SHEET 6 OF 7 SHEETS STA. TO STA.

**STAGE 2
CONSTRUCTION**

F.A.P. RTE.	SECTION	COUNTY	TOTAL SHEETS	SHEET NO.
674	30-1BR-2	ST. CLAIR	29	16
CONTRACT NO. 76N38				
ILLINOIS FED. AID PROJECT				



PI Sta. 231+80.62



SEE HIGHWAY STANDARD 701321 FOR DETAILS NOT SHOWN HERE.

 CONSTRUCTION AREA

MODEL: s:\MODEL\NAME
 FILE: NAME.dwg
 PROJECT: 076N38\076N38\CADD\DATA\CAD\PROJECTS\076N38-STR-CLAIR.dwg
 OFFICE: DISTRICT
 DATE: 12/3/2019

USER NAME = manntm	DESIGNED -	REVISED -
	DRAWN -	REVISED -
PLOT SCALE = 40.0000' / in.	CHECKED -	REVISED -
PLOT DATE = 12/3/2019	DATE -	REVISED -

**STATE OF ILLINOIS
DEPARTMENT OF TRANSPORTATION**

STAGE 2 CONSTRUCTION		F.A.P. RTE.	SECTION	COUNTY	TOTAL SHEETS	SHEET NO.
		674	30-1BR-2	ST. CLAIR	29	17
SCALE: 1"=20'		SHEET 7 OF 7 SHEETS		STA. TO STA.		CONTRACT NO. 76N38

ILLINOIS		FED. AID PROJECT	
----------	--	------------------	--

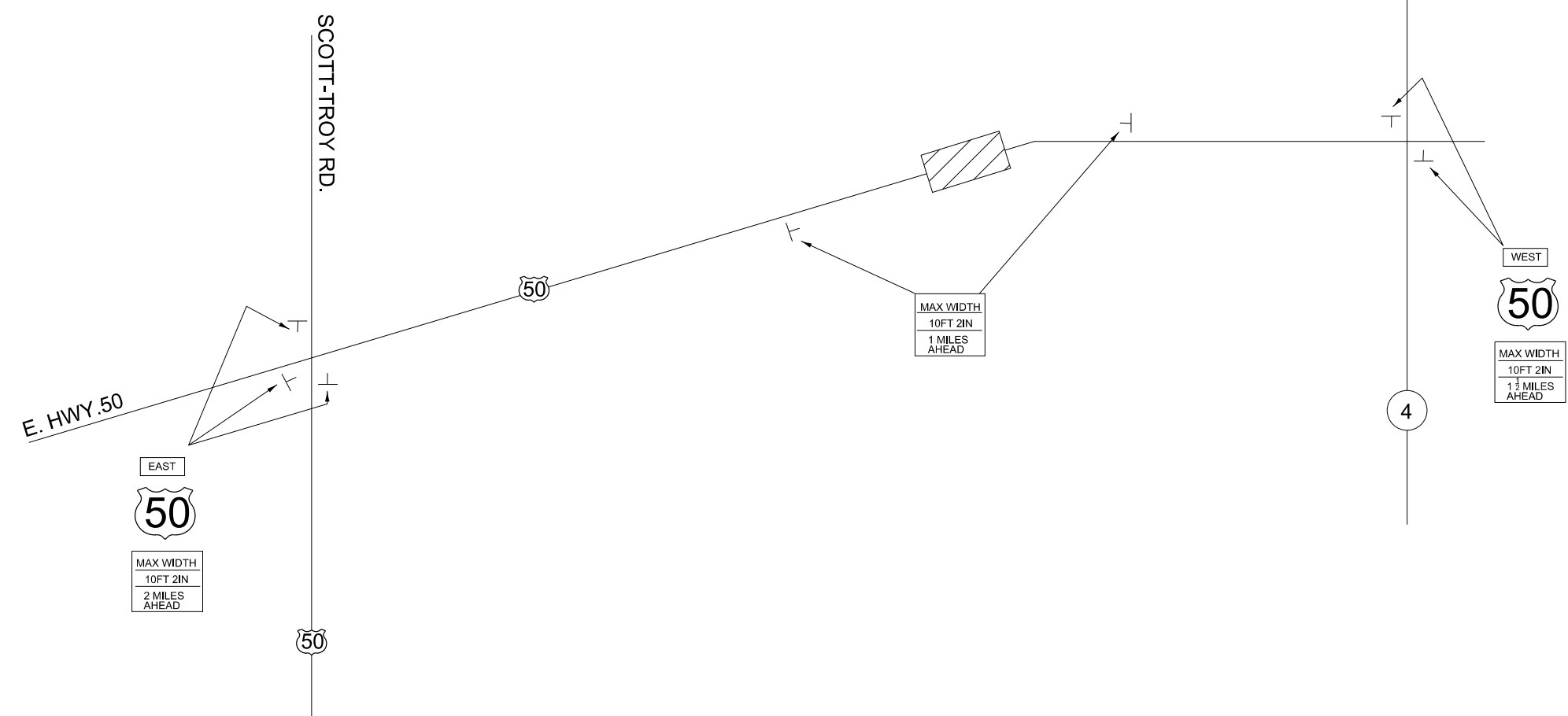
NOTES

1. ALL SIGNS REQUIRED WILL BE SUPPLIED TO THE CONTRACTOR BY I.D.O.T.
2. THE CONTRACTOR SHALL FURNISH THE POSTS AND ERECT SIGNS AT THE LOCATIONS SHOWN ON THIS SHEET, AS DIRECTED BY THE R.E./R.T. THE POSTS SHALL REMAIN THE PROPERTY OF THE CONTRACTOR.
3. THE CONTRACTOR SHALL GIVE ILLINOIS DEPARTMENT OF TRANSPORTATION, BUREAU OF OPERATIONS TWO WEEKS NOTICE FOR SIGNS. THE CONTRACTOR SHALL PICK UP THE SIGNS AT THE T.M. BUILDING IN FAIRVIEW HEIGHTS, AND RETURN THEM UPON COMPLETION OF THE CONTRACT. CONTACT JEAN SLAPE, AT (618) 394-2189.
4. THE ABOVE NOTED WORK SHALL BE PAID FOR AT THE CONTRACT UNIT PRICE, LUMP SUM, FOR WIDE LOAD SIGNING AND NO OTHER COMPENSATION WILL BE ALLOWED.
5. SIGN SPACING WILL BE 400' OR TO FIT FIELD CONDITIONS.
6. THE HEIGHT TO THE BOTTOM OF THE LOWEST SIGN SHALL NOT BE LESS THAN 6'.



SIGNS REQUIRED

MAX WIDTH 10FT 2IN 1 MILES AHEAD	(2)	(5)
MAX WIDTH 10FT 2IN 1 1/2 MILES AHEAD	(2)	EAST (3)
MAX WIDTH 10FT 2IN 2 MILES AHEAD	(3)	WEST (2)



NOTE : NOT TO SCALE

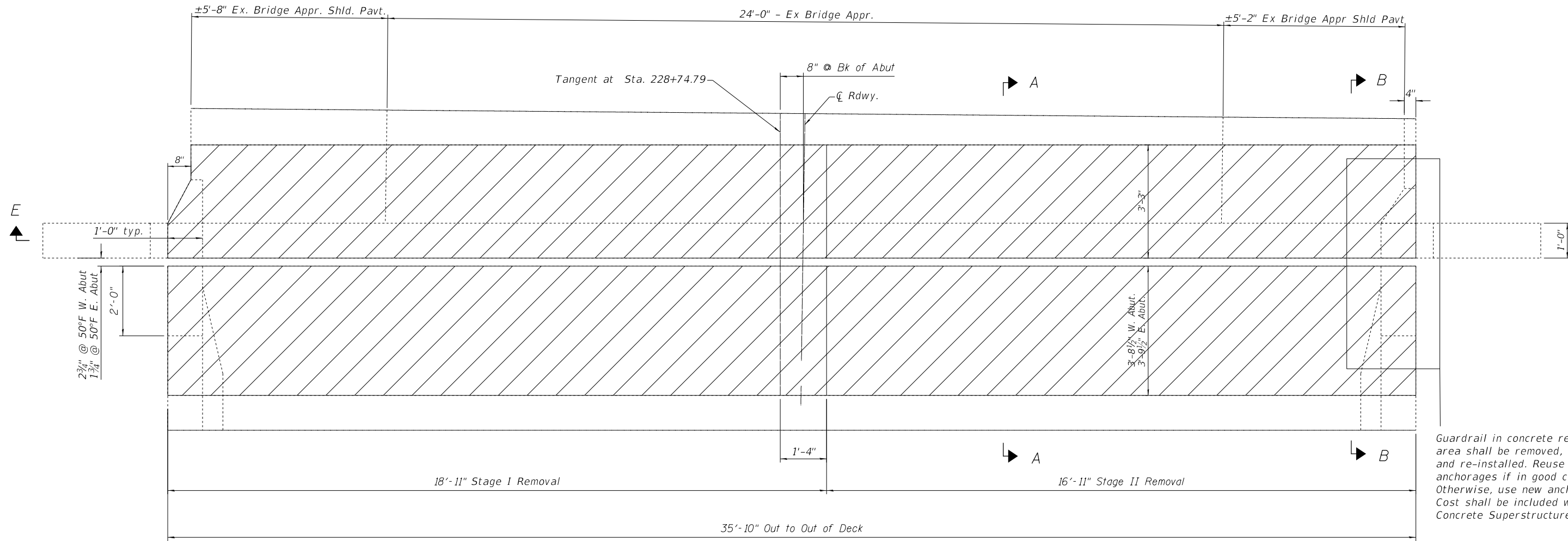
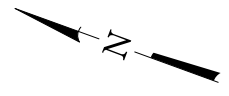
MODEL: s:\MODEL\MHFS
 FILE: MHFS_Plan\Illuminoma.dwg
 I:\Illinois\gov\RIDOT\Documents\DOT_Offices\District 8\Projects\0763\30\CAD\Drawings\0763\30-Wide_Load_Signing.dwg

USER NAME = manntm	DESIGNED -	REVISED -	
	DRAWN -	REVISED -	
PLOT SCALE = 100,0000' / in.	CHECKED -	REVISED -	
PLOT DATE = 12/3/2019	DATE -	REVISED -	

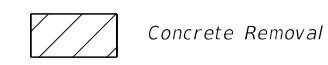
**STATE OF ILLINOIS
DEPARTMENT OF TRANSPORTATION**

WIDE LOAD SIGNING			
SCALE: NONE	SHEET 1 OF 1 SHEETS	STA.	TO STA.

F.A.P. RTE.	SECTION	COUNTY	TOTAL SHEETS	SHEET NO.
674	30-1BR-2	ST. CLAIR	29	18
CONTRACT NO. 76N38				
ILLINOIS FED. AID PROJECT				



CONCRETE REMOVAL
(E. Abut. shown, W. Abut. opposite)



Note:
See sheet 7 of 11 for Bill of Material & Sections A-A & B-B.
See sheet 5 of 11 for Section E-E.

MODEL: 02/20/2020 10:56:19 AM 38-003
 FILE: \\hmc-pc\pub\hmc\omada\illinois.gov\PI\DOT\Documents\DOT_Offices\IllinDOT\Projects\0820036-76N38.dgn

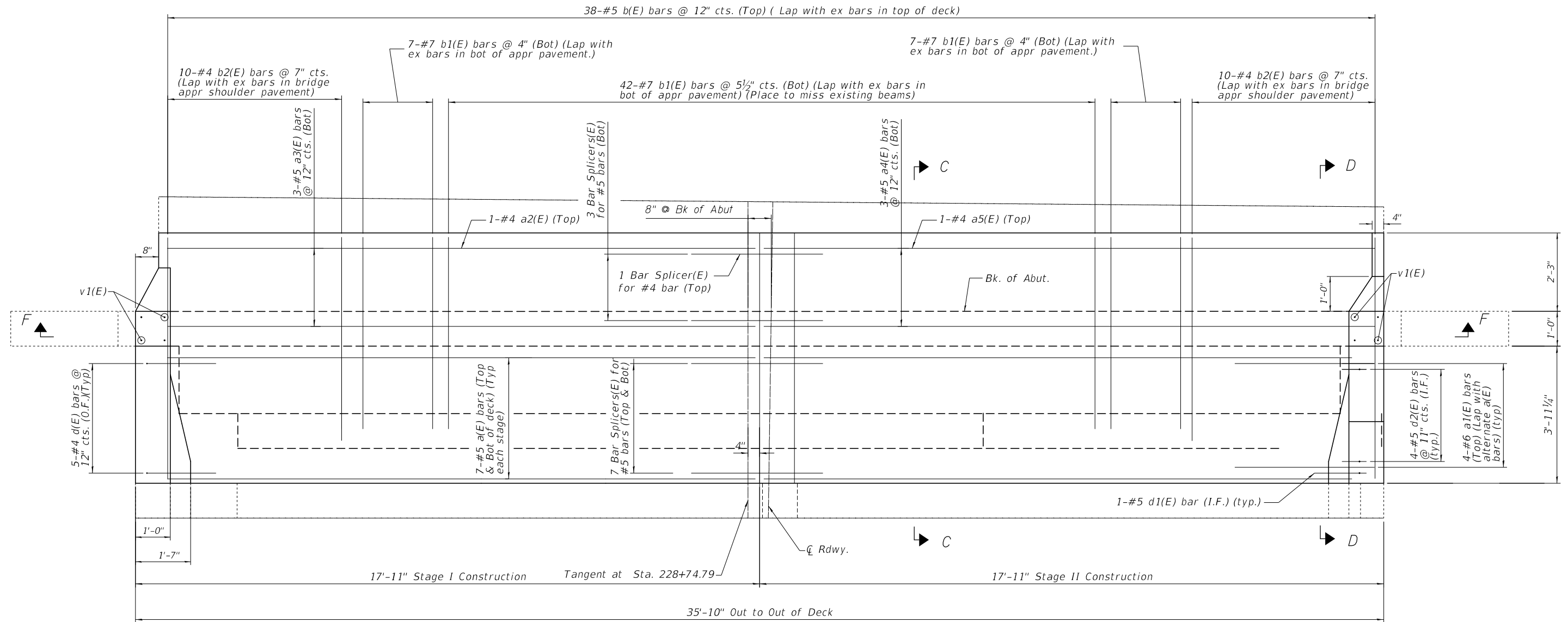
USER NAME = vinsonay	DESIGNED -	REVISED -
	DRAWN -	REVISED -
PLOT SCALE = 3:0.0000 " = 1 in.	CHECKED -	REVISED -
PLOT DATE = 1/3/2020	DATE -	REVISED -

STATE OF ILLINOIS
DEPARTMENT OF TRANSPORTATION

JOINT REMOVAL
SN 082-0036

SCALE: SHEET 3 OF 11 SHEETS STA. TO STA.

F.A.P. RTE.	SECTION	COUNTY	TOTAL SHEETS	SHEET NO.
674	30-1BR-2	ST. CLAIR	29	21
CONTRACT NO. 76N38				
ILLINOIS FED. AID PROJECT				



CONCRETE REPLACEMENT

(E. Abut. shown, W. Abut. opposite)

Note:

See sheet 7 of 11 for Bill of Material & Sections C-C & D-D.

See sheet 6 of 11 for Section F-F.

MODEL: 02/20/2020 10:56:19 AM 76N38-004
 FILE: \\hpcr-pia01\hpcr\omada\illinois.gov\PIW\DOT\Documents\DOT_Offices\Illin\ct @ Projects\0820036-76N38.dgn

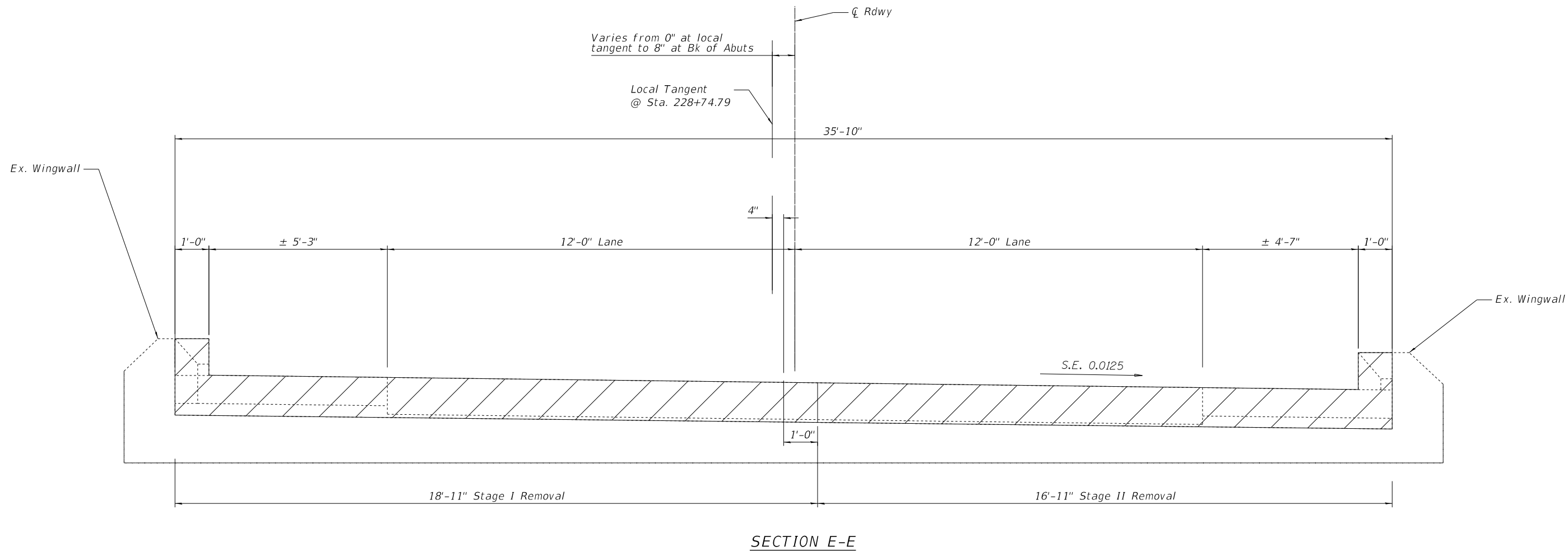
USER NAME = vinsonay	DESIGNED -	REVISED -
	DRAWN -	REVISED -
PLOT SCALE = 3:0.0000 '"/td> <td>CHECKED -</td> <td>REVISED -</td>	CHECKED -	REVISED -
PLOT DATE = 1/3/2020	DATE -	REVISED -

**STATE OF ILLINOIS
DEPARTMENT OF TRANSPORTATION**

**JOINT REPLACEMENT
SN 082-0036**

SCALE: SHEET 4 OF 11 SHEETS STA. TO STA.

F.A.P. RTE.	SECTION	COUNTY	TOTAL SHEETS	SHEET NO.
674	30-1BR-2	ST. CLAIR	29	22
ILLINOIS FED. AID PROJECT			CONTRACT NO. 76N38	



MODEL: 02/20/2019 7:18:05
 FILE: \\hmc-pc-pub\hmc\omada\illinois.gov\PWIDOT\Documents\DOT_Offices\District 8\Projects\Operations\Structures\0220036-76N38.dgn

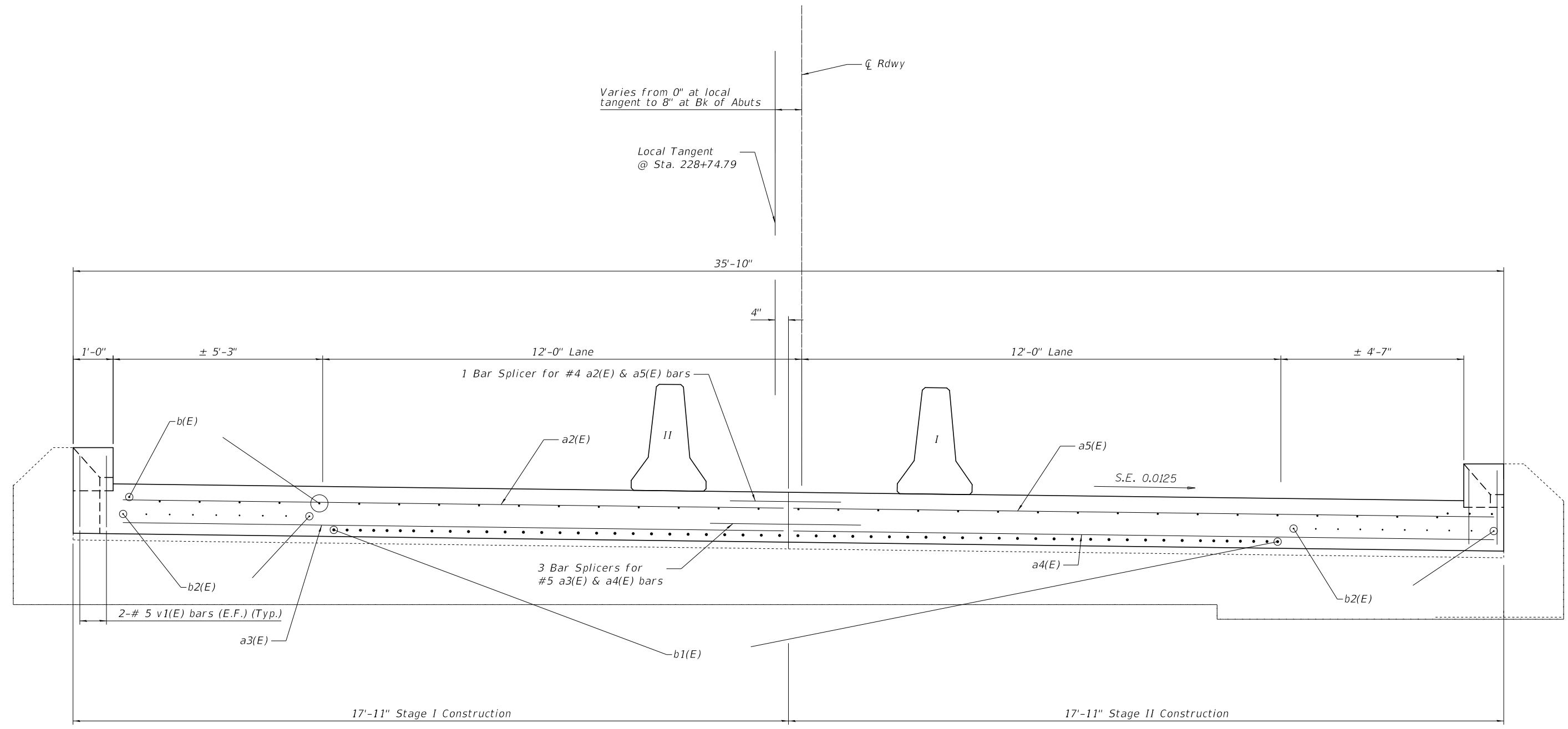
USER NAME = vinsonay	DESIGNED - AYV	REVISED -
	DRAWN - AYV	REVISED -
PLOT SCALE = 3:2.0000 " = 1" / in.	CHECKED -	REVISED -
PLOT DATE = 11/27/2019	DATE -	REVISED -

**STATE OF ILLINOIS
 DEPARTMENT OF TRANSPORTATION**

**CROSS SECTION (Curb, Approach & Shoulder Approach Pavement Removal)
 SN 082-0036**

SCALE: SHEET 5 OF 11 SHEETS STA. TO STA.

F.A.P. RTE.	SECTION	COUNTY	TOTAL SHEETS	SHEET NO.
674	30-1BR-2	ST. CLAIR	29	23
CONTRACT NO. 76N38			ILLINOIS FED. AID PROJECT	



SECTION F-F

MODEL: 02/20/2019 7:18:06
 FILE: \\hpcr-pc1\pbl\mcomada\illinois.gov\PI\DOT\Documents\DOT_Offices\District 8\Projects\Operations\Structures\0220036-76N38.dgn

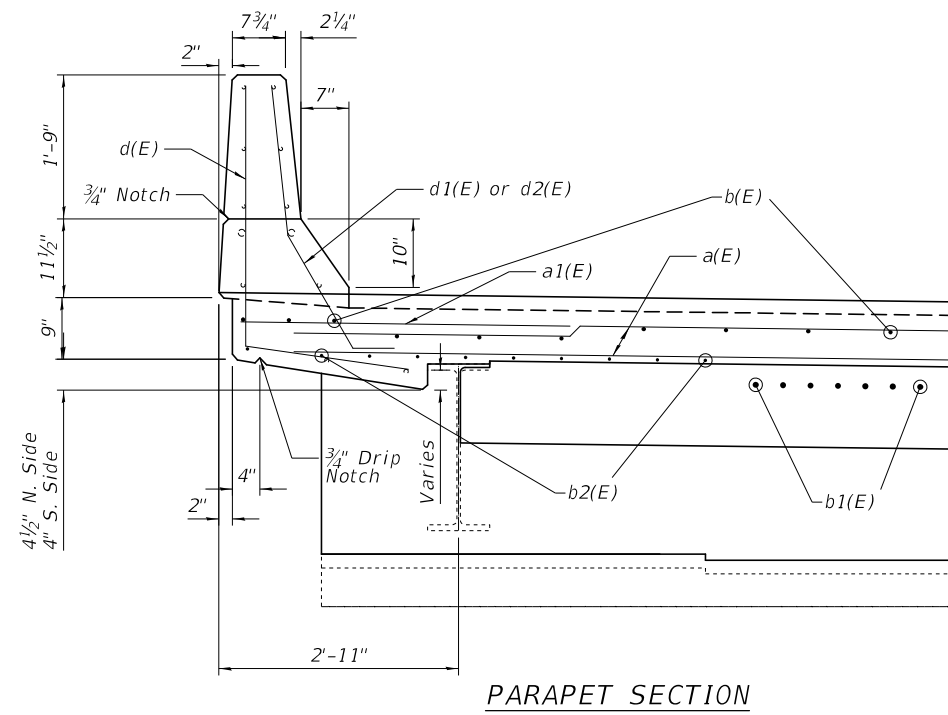
USER NAME = vinsonay	DESIGNED - AYV	REVISED -
	DRAWN - AYV	REVISED -
PLOT SCALE = 2:8.0000 '"/in.	CHECKED -	REVISED -
PLOT DATE = 11/27/2019	DATE -	REVISED -

**STATE OF ILLINOIS
 DEPARTMENT OF TRANSPORTATION**

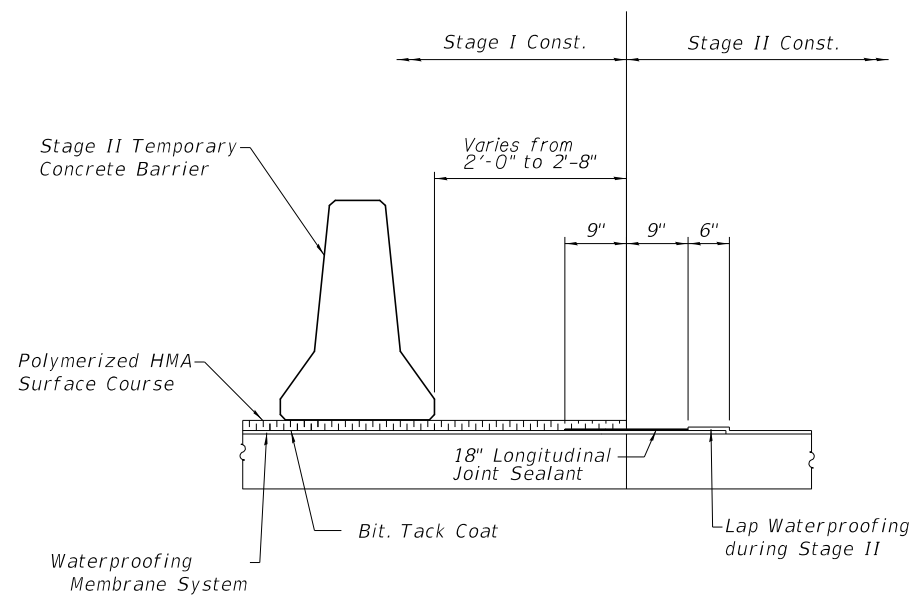
CROSS SECTION (Curb, Approach & Shoulder Appr. Pavement Replacement)
SN 082-0036

SCALE: SHEET 6 OF 11 SHEETS STA. TO STA.

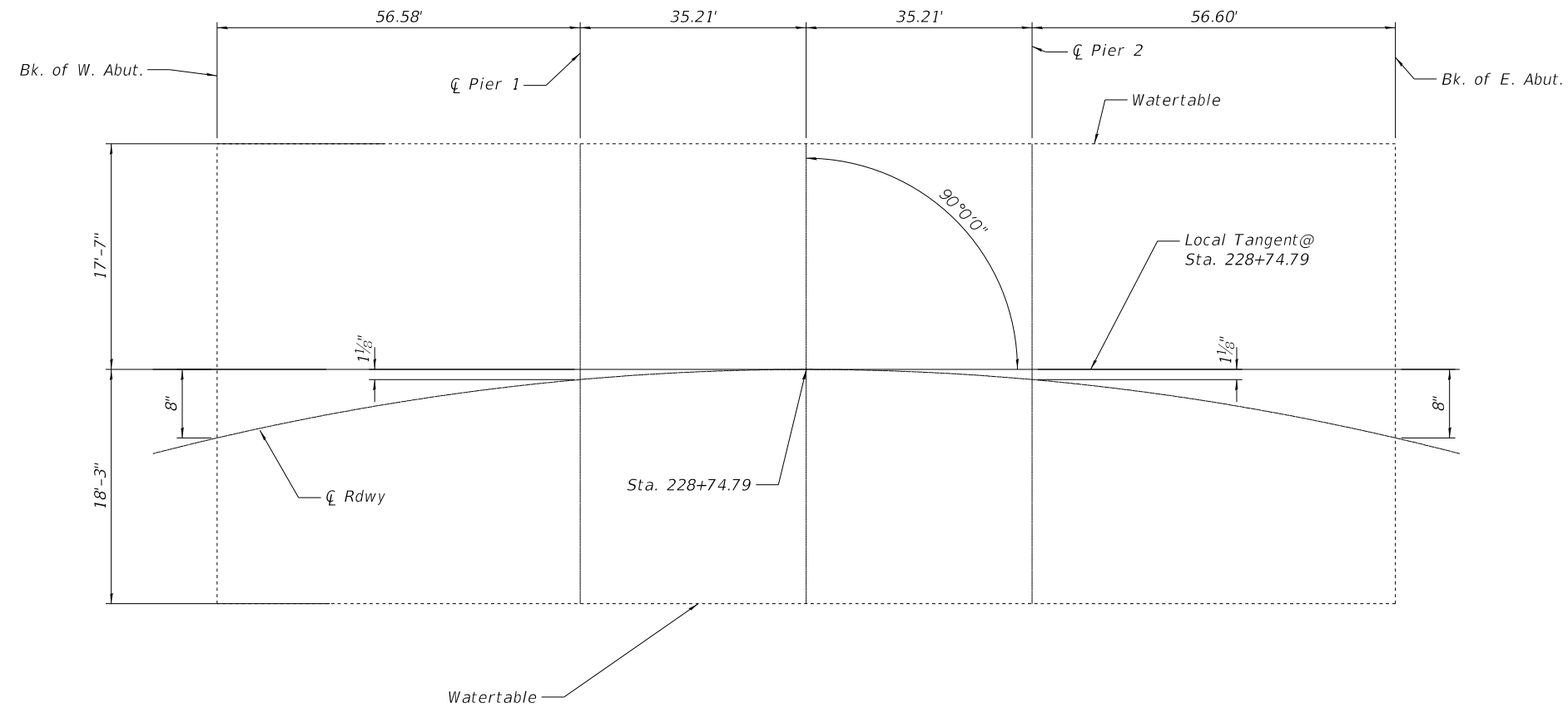
F.A.P. RTE.	SECTION	COUNTY	TOTAL SHEETS	SHEET NO.
674	30-1BR-2	ST. CLAIR	29	24
CONTRACT NO. 76N38				
ILLINOIS FED. AID PROJECT				



PARAPET SECTION



WATERPROOFING STAGING



OFFSET SKETCH

MODEL: 02/20/2019 7:19:38-008
 FILE: \\hmc-pc\pub\hmc\mca\illinois\pwr\DOT\Documents\DOT_Offices\Dir\ctc_8\Projects\Operations\Structures\02/20/2019-76N38.dgn

USER NAME = vinsonay	DESIGNED - AYV	REVISED -
DRAWN - AYV	CHECKED -	REVISED -
PLOT SCALE = 2:4.0000 "/>		

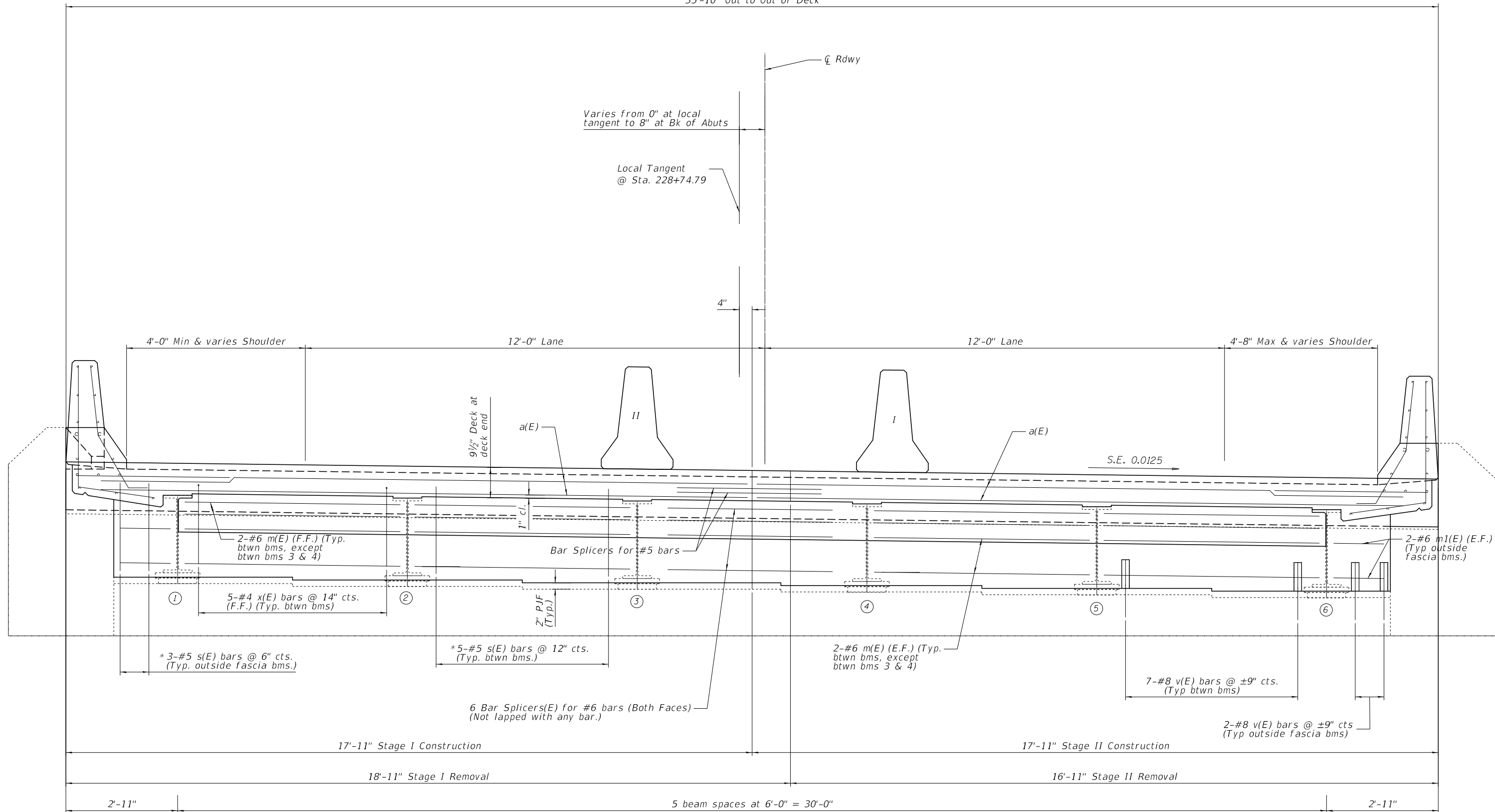
STATE OF ILLINOIS
 DEPARTMENT OF TRANSPORTATION

PARAPET SECTION, OFFSET & WATERPROOFING STAGING
 SN 082-0036

SCALE: SHEET 8 OF 11 SHEETS STA. TO STA.

F.A.P. RTE.	SECTION	COUNTY	TOTAL SHEETS	SHEET NO.
674	30-1BR-2	ST. CLAIR	29	26
CONTRACT NO. 76N38				
ILLINOIS FED. AID PROJECT				

35'-10" Out to Out of Deck



EAST ABUTMENT SHOWN (Looking East)

* Use s1(E) bars at W. Abutment West abutment similar

MODEL: 02/20/2016-76138-008
 FILE: \\miller-pc\public\miller\gis\illinois\gov\PHUDOT\Documents\DOT_Offices\Illin\DOT\Documents\DOT_082-0036-76138.dgn

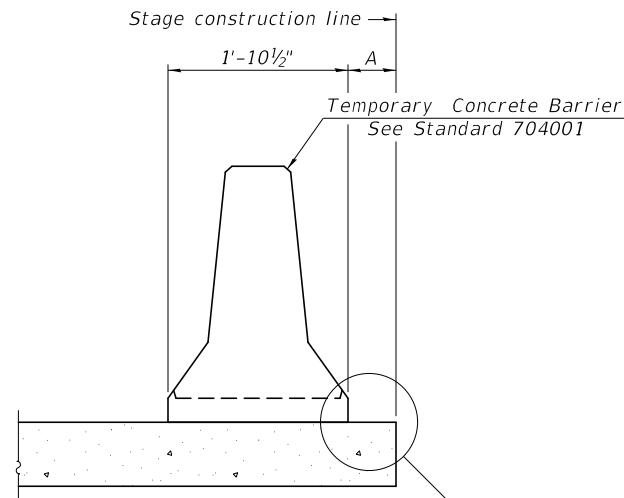
USER NAME = vinsonay	DESIGNED -	REVISED -
PLOT SCALE = 2:6.0000 " = 1 in.	DRAWN -	REVISED -
PLOT DATE = 1/3/2020	CHECKED -	REVISED -
	DATE -	REVISED -

**STATE OF ILLINOIS
DEPARTMENT OF TRANSPORTATION**

**DIAPHRAGMS AT ABUTMENTS
SN 082-0036**

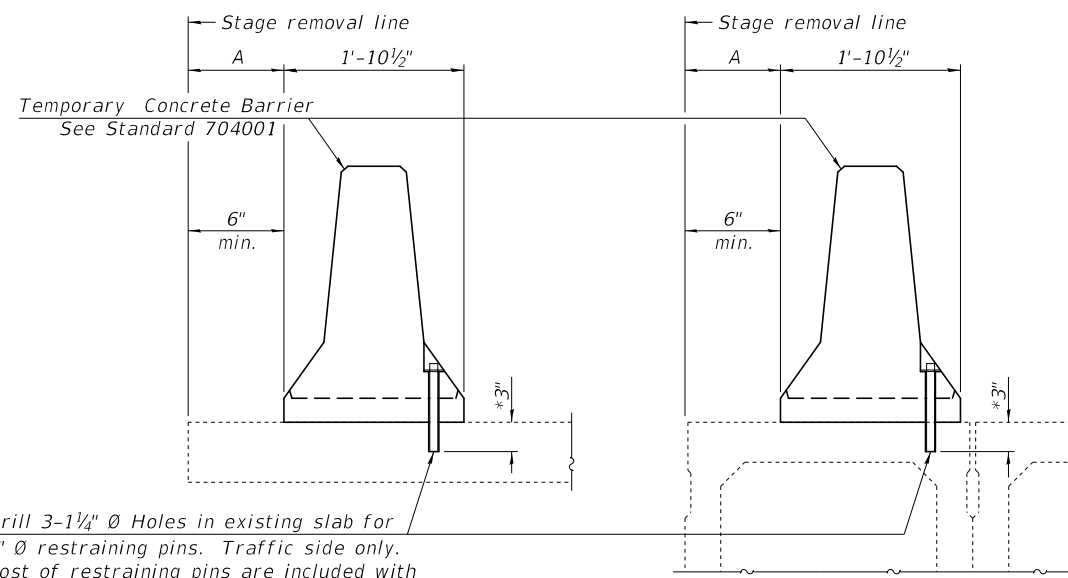
SCALE: SHEET 9 OF 11 SHEETS STA. TO STA.

F.A.P. RTE.	SECTION	COUNTY	TOTAL SHEETS	SHEET NO.
674	30-1BR-2	ST. CLAIR	29	27
CONTRACT NO. 76N38			ILLINOIS FED. AID PROJECT	



When "A" is 3'-1" or less, the temporary concrete barrier shall be restrained to the new slab according to Detail I, II or III. No restraint is required when "A" is greater than 3'-1".

NEW SLAB OR NEW DECK BEAM

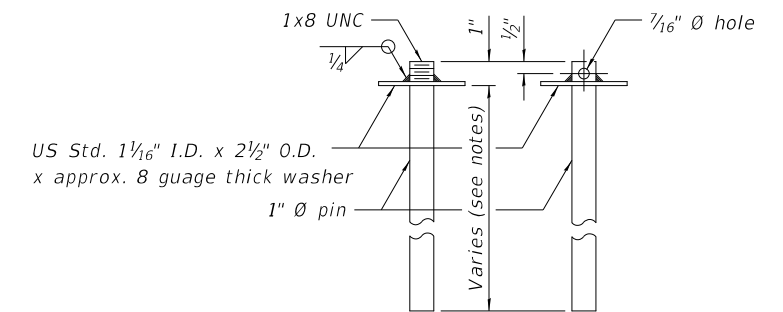


Drill 3-1/4" Ø Holes in existing slab for 1" Ø restraining pins. Traffic side only. Cost of restraining pins are included with Temporary Concrete Barrier. No restraint is required when "A" is greater than 3'-1".

EXISTING SLAB

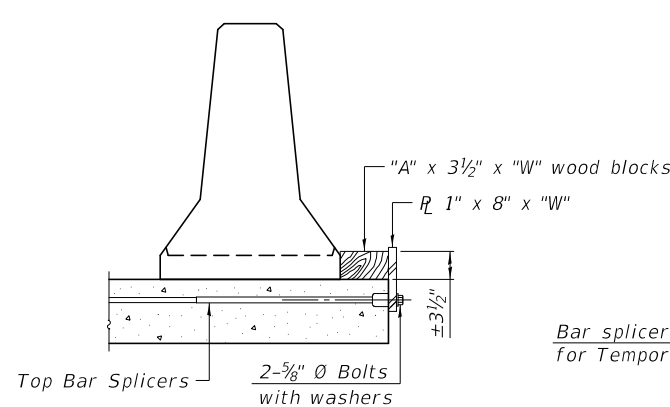
* When hot-mix asphalt wearing surface is present, embedment shall be 3" plus the wearing surface depth.

EXISTING DECK BEAM

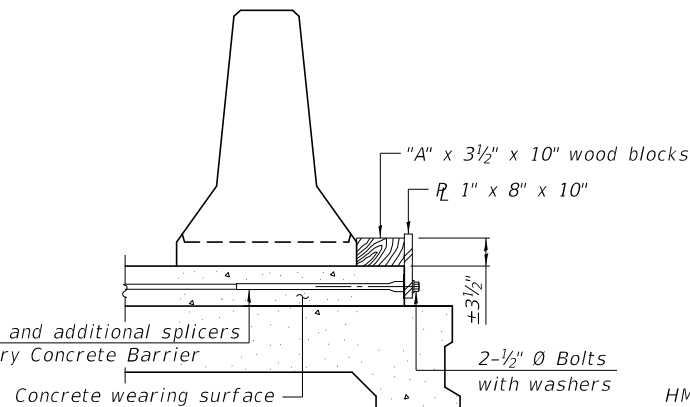


RESTRAINING PIN

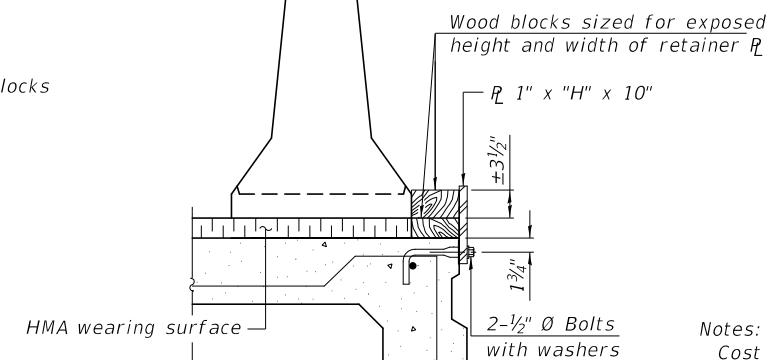
SECTIONS THRU SLAB OR DECK BEAM



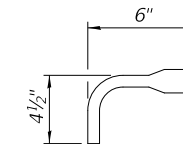
DETAIL I



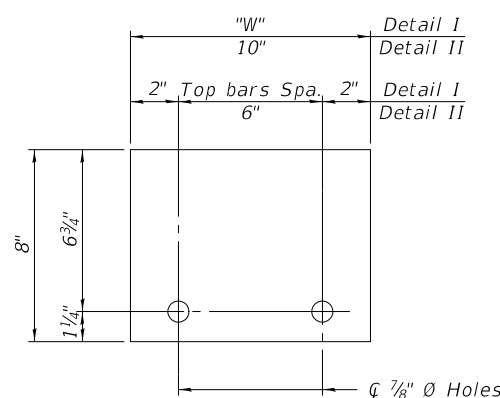
DETAIL II



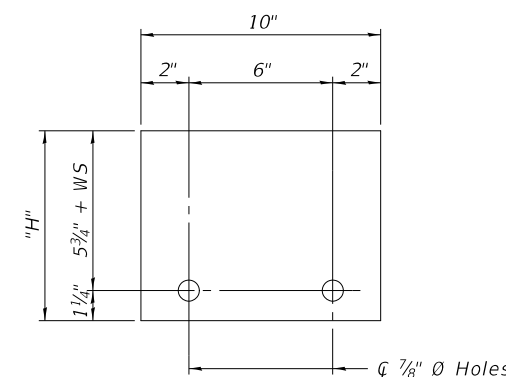
DETAIL III



BAR SPLICER FOR #4 BAR - DETAIL III



STEEL RETAINER R 1" x 8" x "W"
(Detail I and II)



STEEL RETAINER R 1" x "H" x 10"
(Detail III)

Notes:
 Cost of retainer assembly is included with Temporary Concrete Barrier.
 A retainer assembly shall be located at the approximate \bar{C} of each temporary concrete barrier.
 The retainer plate shall not be removed until the concrete on the adjacent stage is ready to be poured. For Detail III applications the retainer plate shall not be removed until just prior to placing the adjacent beam.
 When the 'A' dimension is less than 1 1/2", the wood block shall be omitted and the barrier shall be placed in direct contact with the steel retainer plate. For deck beam applications the minimum required 'A' distance is 6" to accommodate the shear key clamping device.

Detail I - Installation for a new bridge deck or bridge slab.
 Detail II - Installation for a new deck beam with an initial concrete wearing surface. Additional bar splicers shall be provided at 6'-0" centers and paired with the bar splicers of the concrete wearing surface reinforcement to accommodate the installation of the retainer assemblies. The cost of the additional bar splicers is included with the concrete wearing surface.
 Detail III - Installation for a new deck beam with no initial wearing surface or with an initial hot-mix asphalt (HMA) wearing surface present. The deck beam directly beneath the temporary concrete barrier shall be fabricated with bar splicer inserts in the side of the beam, as detailed, to accommodate the installation of the retainer assemblies. A pair of bar splicers, 6" apart, shall be placed at 6'-0" centers along the length of the beam. The cost of the bar splicers is included with the deck beam.

MODEL: 0820036-76N38-010
 FILE NAME: p:\projects\illinois\dot\documents\ibdot_offices\dot\structures\0820036-76N38.dgn

R-27 8-11-2017

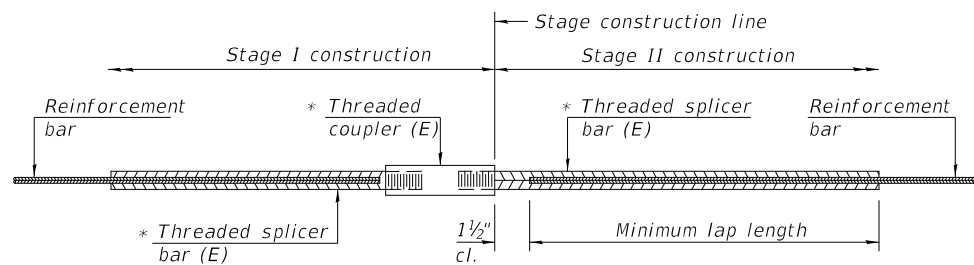
USER NAME = vinsonay	DESIGNED - AYV	REVISED -
DRAWN - AYV	REVISIONS -	
PLOT SCALE = 0:2.0000 ' = 1" / in.	CHECKED -	REVISED -
PLOT DATE = 11/27/2019	DATE -	REVISED -

STATE OF ILLINOIS
 DEPARTMENT OF TRANSPORTATION

TEMPORARY CONCRETE BARRIER FOR STAGE CONSTRUCTION
 STRUCTURE NO. 082-0036

SCALE: SHEET 10 OF 11 SHEETS STA. TO STA.

F.A.P. RTE.	SECTION	COUNTY	TOTAL SHEETS	SHEET NO.
674	30-1BR-2	ST. CLAIR	29	28
			CONTRACT NO. 76N38	
		ILLINOIS	FED. AID PROJECT	

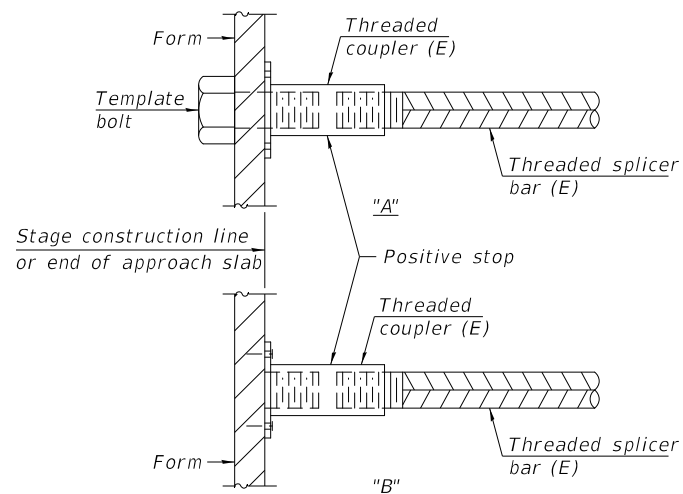


STANDARD BAR SPLICER ASSEMBLY

Threaded splicer bar length = min. lap length + 1 1/2" + thread length

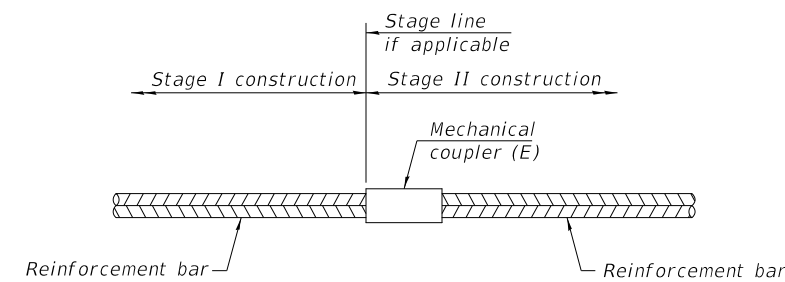
* Epoxy not required on Bar Splicer Assembly components used in conjunction with black bars.

Location	Bar size	No. assemblies required	Minimum lap length
Abuts	#5	34	3'-6"
Abuts	#4	2	2'-5"
Abuts	#6	12	4'-0"



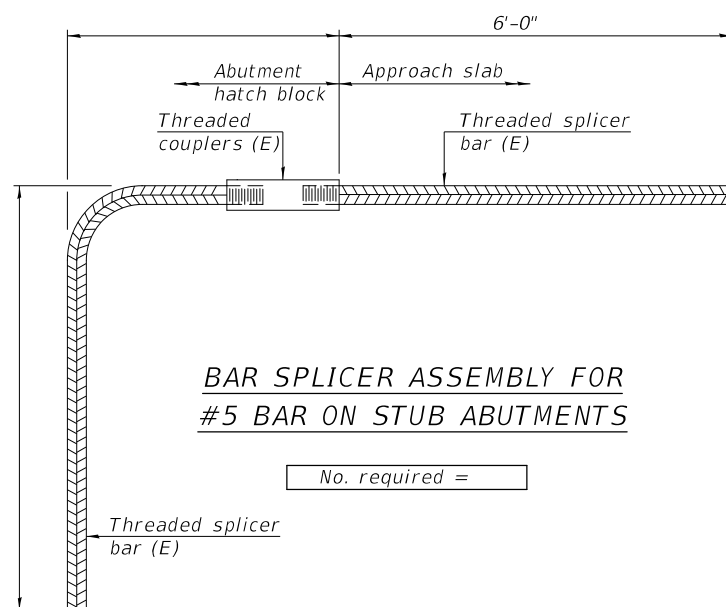
INSTALLATION AND SETTING METHODS

"A" : Set bar splicer assembly by means of a template bolt.
 "B" : Set bar splicer assembly by nailing to wood forms or cementing to steel forms.
 (E) : Indicates epoxy coating.



STANDARD MECHANICAL SPLICER

Location	Bar size	No. assemblies required



BAR SPLICER ASSEMBLY FOR #5 BAR ON STUB ABUTMENTS

No. required =

NOTES

Splicer bars shall be deformed with threaded ends and have a minimum 60 ksi yield strength.
 All reinforcement shall be lapped and tied to the splicer bars.
 Bar splicer assemblies shall be epoxy coated according to the requirements for reinforcement bars. See Section 508 of the Standard Specifications.
 See approved list of bar splicer assemblies and mechanical splicers for alternatives.

MODEL: 02/20/2016-76N38-011
 FILE: \\hmc-pc-pub\hmc\omada\illinois.gov\PHWDOT\Documents\DOT_Offices\District 8\Projects\Operations\Structures\02/20/2016-76N38.dgn

BSD-1

2-17-2017

USER NAME = vinsonay	DESIGNED - AYW	REVISED -
	DRAWN - AYW	REVISED -
PLOT SCALE = 0:2.0000 " = 1" / in.	CHECKED -	REVISED -
PLOT DATE = 11/27/2019	DATE -	REVISED -

**STATE OF ILLINOIS
 DEPARTMENT OF TRANSPORTATION**

**BAR SPLICER ASSEMBLY AND MECHANICAL SPLICER DETAILS
 STRUCTURE NO. 082-0036**

SCALE: SHEET 11 OF 11 SHEETS STA. TO STA.

F.A.P. RTE. 674	SECTION 30-1BR-2	COUNTY ST. CLAIR	TOTAL SHEETS 29	SHEET NO. 29
CONTRACT NO. 76N38			ILLINOIS FED. AID PROJECT	