

108

03-06-2020 LETTING ITEM 108

STATE OF ILLINOIS
DEPARTMENT OF TRANSPORTATION

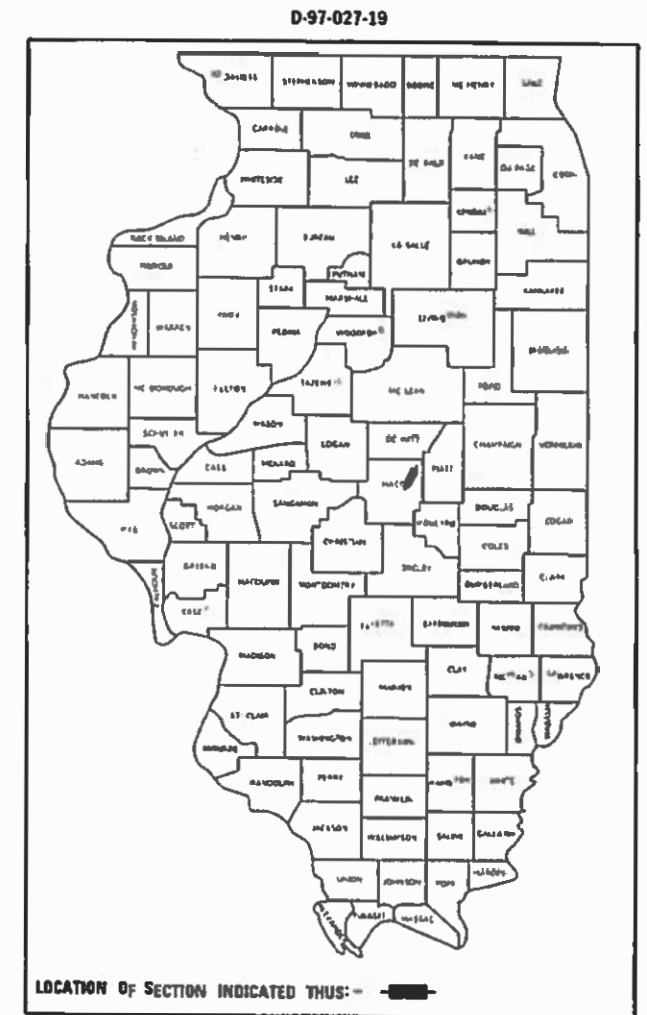
FAI SITE	SECTION	COUNTY	TOTAL SHEETS	SHEET NO.
72	D7 BRIDGE REPAIRS 2020-2	MACON	14	1
		ILLINOIS	CONTRACT NO. 74910	

FOR INDEX OF SHEETS, SEE SHEET NO. 2
ADT (2017) = 12100 (I-72)

PROPOSED HIGHWAY PLANS

FAI 72 (I-72)
SECTION D7 BRIDGE REPAIRS 2020-2
PROJECT NHPP-E6NS(537)
BRIDGE JOINT REPLACE., DECK REPAIR/OVERLAY
MACON COUNTY

C-97-041-19



LOCATION OF PROPOSED IMPROVEMENT
SN 056-0089



FULL SIZE PLANS HAVE BEEN PREPARED USING STANDARD ENGINEERING SCALES. REDUCED SIZED PLANS WILL NOT CONFORM TO STANDARD SCALES. IN MAKING MEASUREMENTS ON REDUCED PLANS, THE ABOVE SCALES MAY BE USED.

J.U.L.I.E.
JOINT UTILITY LOCATION INFORMATION FOR EXCAVATORS
1-800-892-0123
OR 811

PROJECT ENGINEER: BRIAN LEWIS
PROJECT MANAGER: MINDY JANSEN

CONTRACT NO. 74910

GROSS LENGTH = 300.00 FT. = 0.06 MILE
NET LENGTH = 300.00 FT. = 0.06 MILE

STATE OF ILLINOIS
DEPARTMENT OF TRANSPORTATION

SUBMITTED DECEMBER 10, 19
Jeff P. Myrba
REGIONAL ENGINEER

Jan 31, 20
[Signature]
ENGINEER OF DESIGN AND ENVIRONMENT

Jan 31, 20
[Signature]
DIRECTOR OF HIGHWAYS PROJECT IMPLEMENTATION

PRINTED BY THE AUTHORITY
OF THE STATE OF ILLINOIS

GENERAL NOTES

THIS PROJECT IS LOCATED OVER I-72 ONE MILE EAST OF OREANA. THIS WORK INCLUDES THE FOLLOWING REPAIRS TO STRUCTURE NUMBER 058-0089 CARRYING CH-20 OVER I-72: BRIDGE JOINT REPLACEMENT/REPAIR, BRIDGE DECK REPAIRS (FULL AND PARTIAL PATCHING), HMA DECK OVERLAY, WATERPROOFING MEMBRANE SYSTEM, FLOOR DRAINS, BEARING REMOVAL AND ASSEMBLY, JOINT STRIP SEAL AND ALL OTHER WORK NECESSARY AS SHOWN ON THE PLANS.

HMA SURFACE COURSE, MIX "D", N90, MINIMUM LIFT THICKNESS IS 1 1/2" AND MAXIMUM LIFT THICKNESS IS 2 1/2".

PAINT PAVEMENT MARKING - 4" CONSISTS OF 600 FT OF YELLOW AND 600 FT OF WHITE.

INDEX OF SHEETS

SHEET NO.	ITEM
1	COVER SHEET
2	INDEX OF SHEETS, HIGHWAY STANDARDS & GENERAL NOTES
3	SUMMARY OF QUANTITIES
4	LOCATION MAP AND DETOUR PLAN AND SIGNAGE DETAILS
5-14	BRIDGE REPAIR PLANS

THE FOLLOWING STANDARDS ARE A PART OF THESE PLANS AND ARE INCLUDED FOLLOWING THE LAST NUMBERED SHEET OF THE PLANS.

STD. NO.	DESCRIPTION
001001-02	AREAS OF REINFORCEMENT BARS
001006	DECIMAL OF AN INCH AND OF A FOOT
701006-05	OFF-ROAD OPERATIONS, 2L, 2W, 15' TO 24" FROM PAVEMENT EDGE
701011-04	OFF-ROAD MOVING OPERATIONS, 2L, 2W, DAY ONLY
701201-05	LANE CLOSURE, 2L, 2W, DAY ONLY, FOR SPEEDS >= 45 MPH
701301-04	LANE CLOSURE, 2L, 2W, SHORT TIME OPERATIONS
701311-03	LANE CLOSURE, 2L, 2W, MOVING OPERATIONS, DAY ONLY
701400-09	APPROACH TO LANE CLOSURE, FREEWAY/EXPRESSWAY
701406-12	LANE CLOSURE, FREEWAY/EXPRESSWAY, DAY OPERATIONS ONLY
701901-08	TRAFFIC CONTROL DEVICES
B.L.R. 21-9	TYPICAL APPLICATION OF TRAFFIC CONTROL DEVICES FOR CONSTRUCTION ON RURAL LOCAL HIGHWAYS

MODEL: Default
 FILE: h:\mfc_p\pub\harcourm.d\illinois.gov\RWIDOT\Documents\DOT_Offices\District_7\Projects\74910\CAAD\Drawings\74910-5-std-indexnote.dgn

USER NAME = steffenmk	DESIGNED -	REVISED -	STATE OF ILLINOIS DEPARTMENT OF TRANSPORTATION	GENERAL NOTES, INDEX OF SHEETS LIST OF STANDARDS		F.A.I. RTE.	SECTION	COUNTY	TOTAL SHEETS	SHEET NO.
PLOT SCALE = 100.0000 ' / in.	DRAWN -	REVISED -				72	D7 BRIDGE REPAIRS 2020-2	MACON	14	2
PLOT DATE = 12/10/2019	CHECKED -	REVISED -		SCALE: SHEET OF SHEETS STA. TO STA.		CONTRACT NO. 74910				
	DATE -	REVISED -				ILLINOIS FED. AID PROJECT				

90% FED
10% STATE

90% FED
10% STATE

SUMMARY OF QUANTITIES			TOTAL QUANTITIES	CONSTRUCTION TYPE CODE		
CODE NO	ITEM	UNIT		0047		
40604064	HOT-MIX ASPHALT SURFACE COURSE, IL-95, MIX "D", N90	TON	95	95		
44000157	HOT-MIX ASPHALT SURFACE REMOVAL, 2"	SO YD	1119	1119		
50102400	CONCRETE REMOVAL	CU YD	10.6	10.6		
50157300	PROTECTIVE SHIELD	SO YD	425	425		
50300100	FLOOR DRAINS	EACH	8	8		
50300225	CONCRETE STRUCTURES	CU YD	1.9	1.9		
50300255	CONCRETE SUPERSTRUCTURE	CU YD	10	10		
50300300	PROTECTIVE COAT	SO YD	25	25		
50800205	REINFORCEMENT BARS, EPOXY COATED	POUND	2190	2190		
52000110	PREFORMED JOINT STRIP SEAL	FOOT	88	88		
52100010	ELASTOMERIC BEARING ASSEMBLY, TYPE I	EACH	10	10		
52100520	ANCHOR BOLTS, 1"	EACH	20	20		
58100200	WATERPROOFING MEMBRANE SYSTEM	SO YD	1127	1127		
67000400	ENGINEER'S FIELD OFFICE, TYPE A	CAL MO	3	3		

SUMMARY OF QUANTITIES			TOTAL QUANTITIES	CONSTRUCTION TYPE CODE		
CODE NO	ITEM	UNIT		0047		
67100100	MOBILIZATION	L SUM	1	1		
70100450	TRAFFIC CONTROL AND PROTECTION, STANDARD	L SUM	1	1		
	701201					
70100700	TRAFFIC CONTROL AND PROTECTION, STANDARD	L SUM	1	1		
	701406					
70107025	CHANGEABLE MESSAGE SIGN	CAL DA	56	56		
* 78001110	PAINT PAVEMENT MARKING - LINE 4"	FOOT	1200	1200		
X7011800	TRAFFIC CONTROL AND PROTECTION, STANDARD BLR	L SUM	1	1		
	21					
Z0001800	APPROACH SLAB REPAIR (PARTIAL DEPTH)	SO YD	12	12		
Z0001899	JACK AND REMOVE EXISTING BEARINGS	EACH	10	10		
Z0012754	STRUCTURAL REPAIR OF CONCRETE (DEPTH EQUAL TO OR LESS THAN 5 INCHES)	SO FT	33	33		
Z0016001	DECK SLAB REPAIR (FULL DEPTH, TYPE I)	SO YD	5	5		
Z0016002	DECK SLAB REPAIR (FULL DEPTH, TYPE II)	SO YD	5	5		
Z0016200	DECK SLAB REPAIR (PARTIAL)	SO YD	36	36		

* SPECIALTY ITEM

REV. - MS

MODEL: Default
 FILE: \\msfc01\pub\harcourt\dot\illinois.gov\PRJDOT\Documents\DOT_Offices\District 7\Projects\74910\CADD\Drawings\CAD\Sheet\74910-Ph-S00.dgn

USER NAME = steffennk	DESIGNED -	REVISED -
	DRAWN -	REVISED -
PLOT SCALE = 100.0000' / in.	CHECKED -	REVISED -
PLOT DATE = 12/10/2019	DATE -	REVISED -

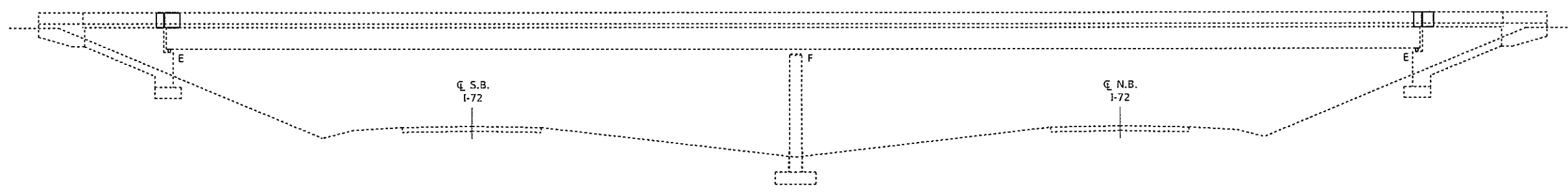
STATE OF ILLINOIS
DEPARTMENT OF TRANSPORTATION

SUMMARY OF QUANTITIES

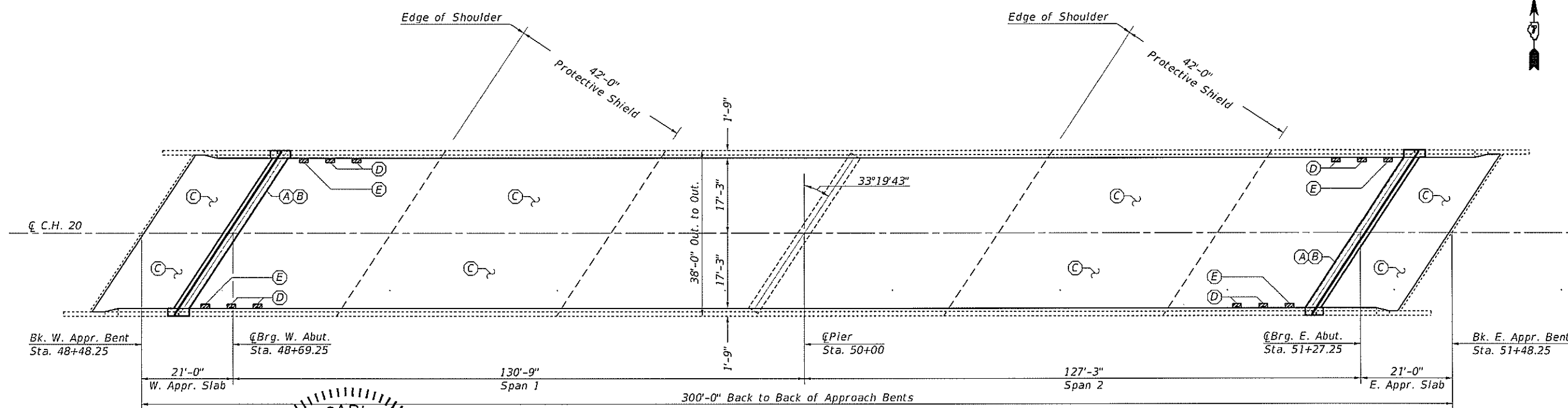
SCALE: SHEET OF SHEETS STA. TO STA.

F.A.I. RTE.	SECTION	COUNTY	TOTAL SHEETS	SHEET NO.
72	D7 BRIDGE REPAIRS 2020-2	MACON	14	3
ILLINOIS FED. AID PROJECT			CONTRACT NO. 74910	

EXISTING STRUCTURE: SN 058-0089, built in 1975, is a 2 span bridge carrying C.H. 20 over F.A.I. Rte. 72. The proposed project consists of replacement of the expansion joints with new strip seals, bearing replacement at abutments with new elastomeric bearings, replacement of deck drains, full and partial depth deck repairs, replacement of waterproofing membrane system and HMA surface and substructure repairs.

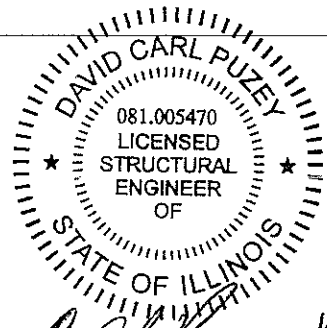


ELEVATION



PLAN

- (A) - Remove Existing neoprene Exp. Jt. and Install Preformed Strip Seal
- (B) - Remove Existing Abutment Bearings and Install new Elastomeric Bearings, Type I
- (C) - Remove and Replace Existing HMA Surface & Waterproofing Membrane System
- (D) - Remove and Replace Existing Deck Drains
- (E) - Remove Existing Deck Drain



David Carl Puzey 12/24/2020 Expires 11/30/2020

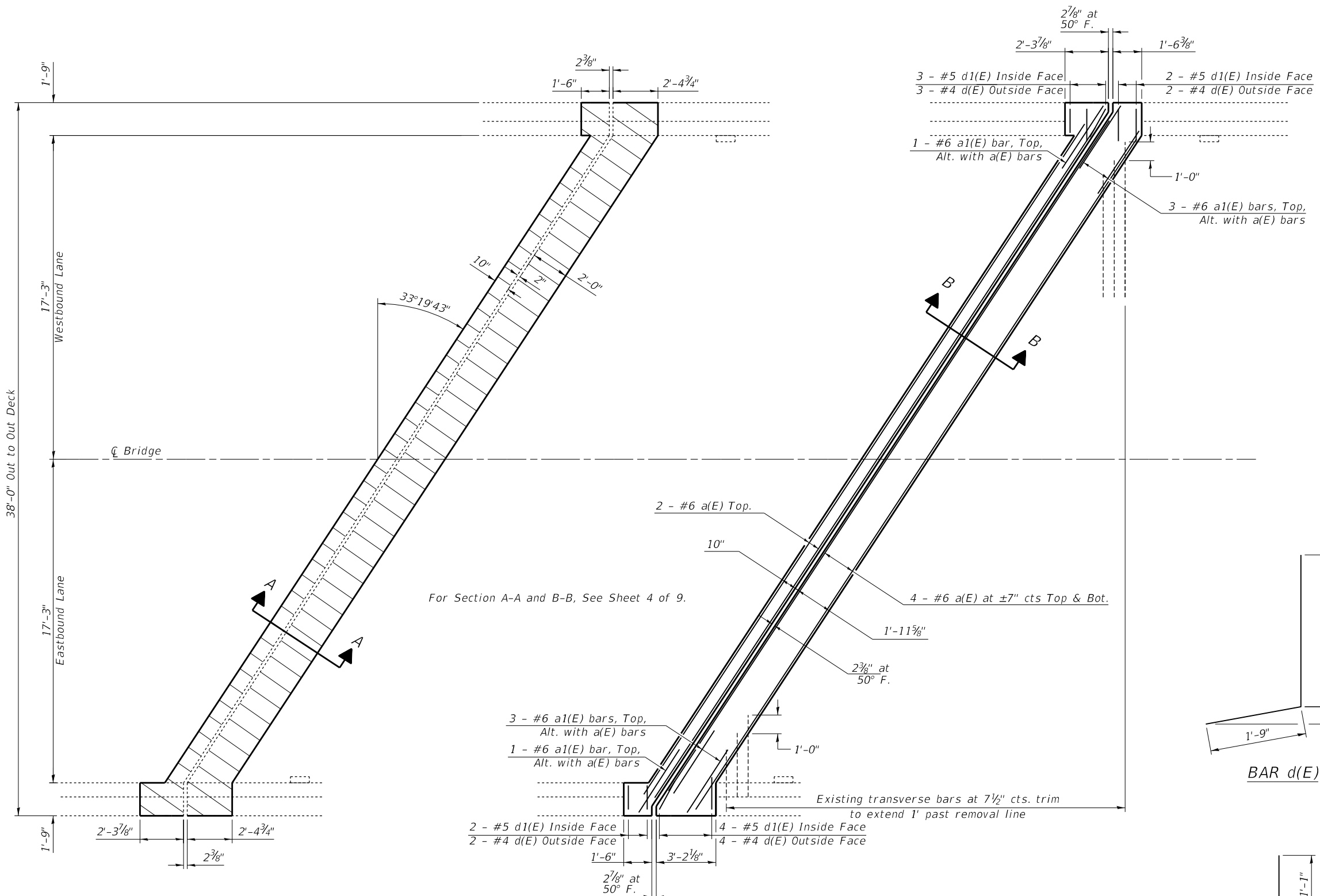
MODEL: Default
FILE NAME: p:\1488000\058-0089\1488000.dwg
PROJECT: 058-0089
DATE: 12/10/2019

USER NAME = steffenmk	DESIGNED - R. Walker	REVISED - 11/19/2019
PLOT SCALE = 100.0000 * 1 in.	DRAWN - R. Walker	REVISED -
PLOT DATE = 12/10/2019	CHECKED - D. Macklin	REVISED -
	DATE - 5/9/2019	REVISED -

STATE OF ILLINOIS
DEPARTMENT OF TRANSPORTATION

GENERAL PLAN & ELEVATION	
SN 058-0089	
SCALE:	SHEET 1 OF 10 SHEETS
STA.	TO STA.

F.A.I. RTE.	SECTION	COUNTY	TOTAL SHEETS	SHEET NO.
72	D7 BRIDGE REPAIRS 2020-2	MACON	14	5
CONTRACT NO. 74910				
ILLINOIS FED. AID PROJECT				



CONCRETE REMOVAL PLAN

(W. Abut. shown, E. Abut. similar by rotation.)

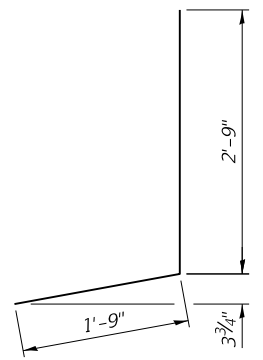
Note:
Hatching indicates concrete removal.
For parapet details see sheet 4 of 9.

CONCRETE REPLACEMENT PLAN

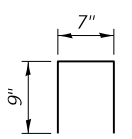
(W. Abut. shown, E. Abut. similar by rotation.)



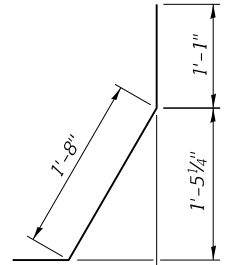
BAR a1(E)



BAR d(E)



BAR d2(E)



BAR d1(E)

BILL OF MATERIAL

Bar	No.	Size	Length	Shape
a (E)	20	#6	42'-9"	—
a1(E)	16	#6	4'-0"	—
d (E)	22	#4	4'-6"	J
d1(E)	22	#5	3'-4"	J
d2(E)	8	#4	2'-1"	Π
ITEM		UNIT	QUANTITY	
Concrete Removal		Cu. Yd.	10.6	
Concrete Superstructure		Cu. Yd.	10.0	
Reinforcement Bars, Epoxy Coated		Pound	1540	

MODEL: Default
 FILE: Abutment_ExpansionJointReplacementsIBDOT_Offices\Bldg\7\Projects\74910\CADD\Drawings\CADD\Sheet\74910-5-Struct\Detail.dgn
 PLOT SCALE = 100.0000' / in.
 PLOT DATE = 12/10/2019

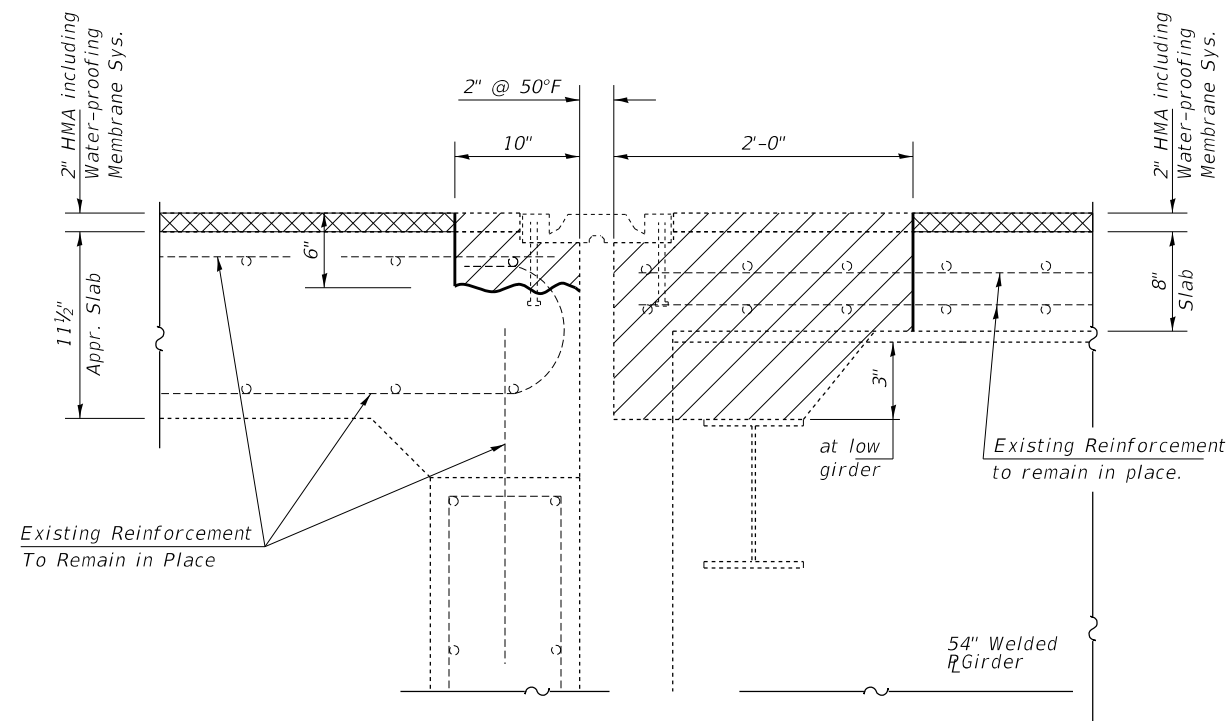
USER NAME = steffemk	DESIGNED - R. Walker	REVISED - 11/19/2019
	DRAWN - R. Walker	REVISED -
PLOT SCALE = 100.0000' / in.	CHECKED - D. Macklin	REVISED -
PLOT DATE = 12/10/2019	DATE - 5/9/2019	REVISED -

**STATE OF ILLINOIS
DEPARTMENT OF TRANSPORTATION**

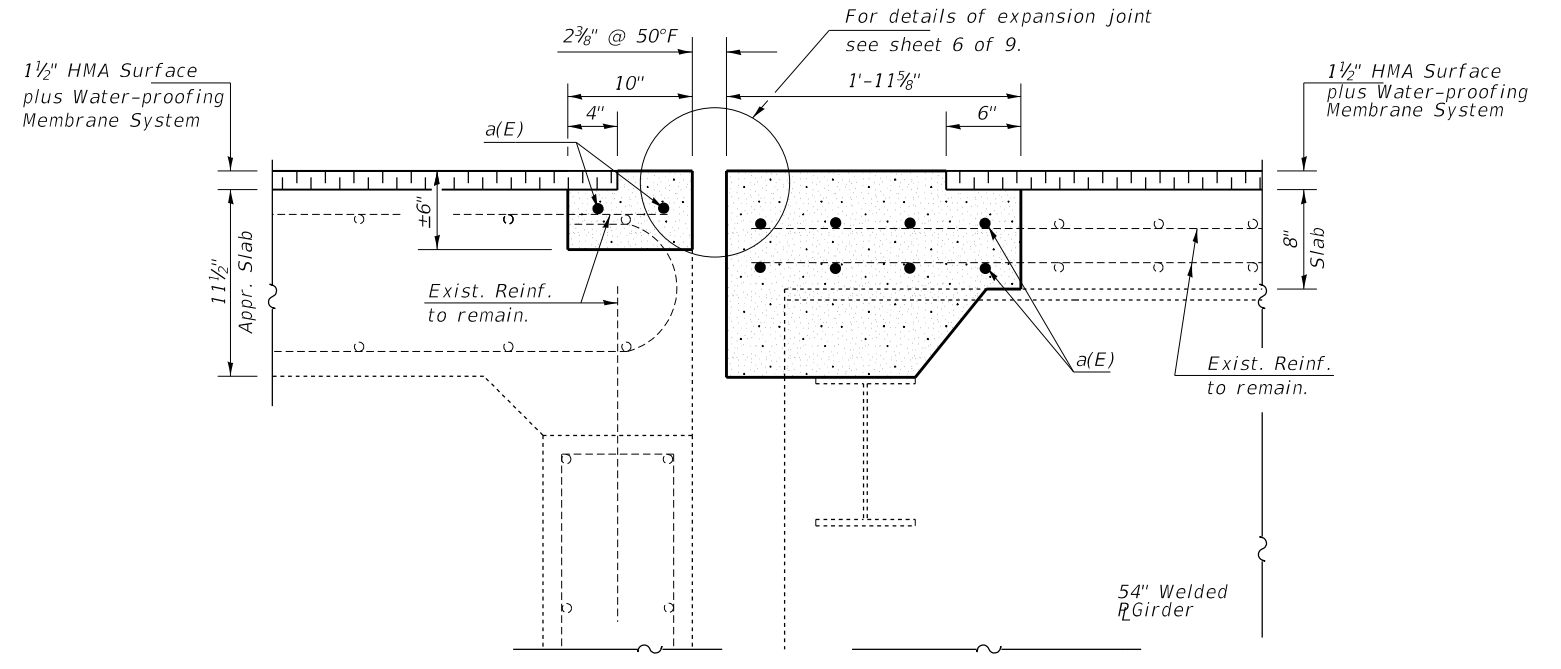
**EXPANSION JOINT REPLACEMENT DETAILS
SN 058-0089**

SCALE: SHEET 3 OF 10 SHEETS STA. TO STA.

F.A.I. RTE.	SECTION	COUNTY	TOTAL SHEETS	SHEET NO.
72	D7 BRIDGE REPAIRS 2020-2	MACON	14	7
CONTRACT NO. 74910			ILLINOIS FED. AID PROJECT	

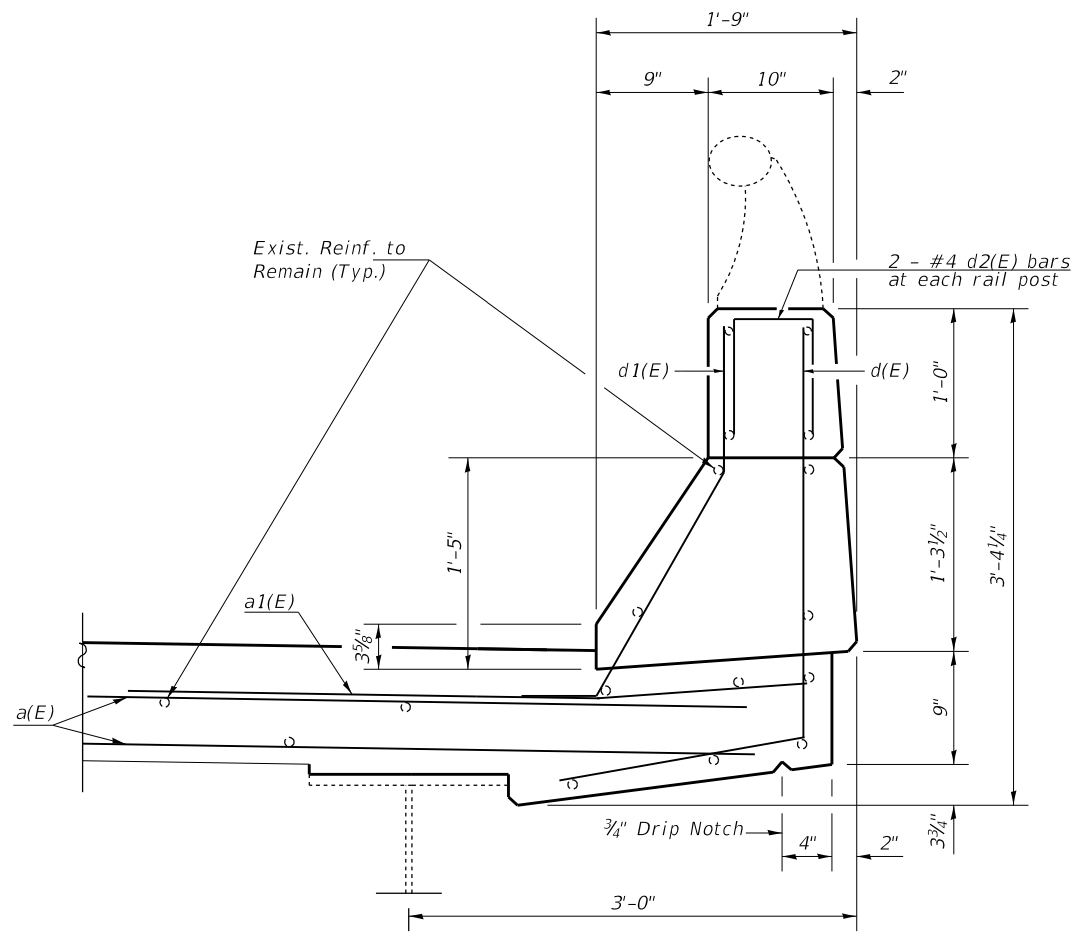


SECTION A-A
(Dimensions at RT L's to end of deck)

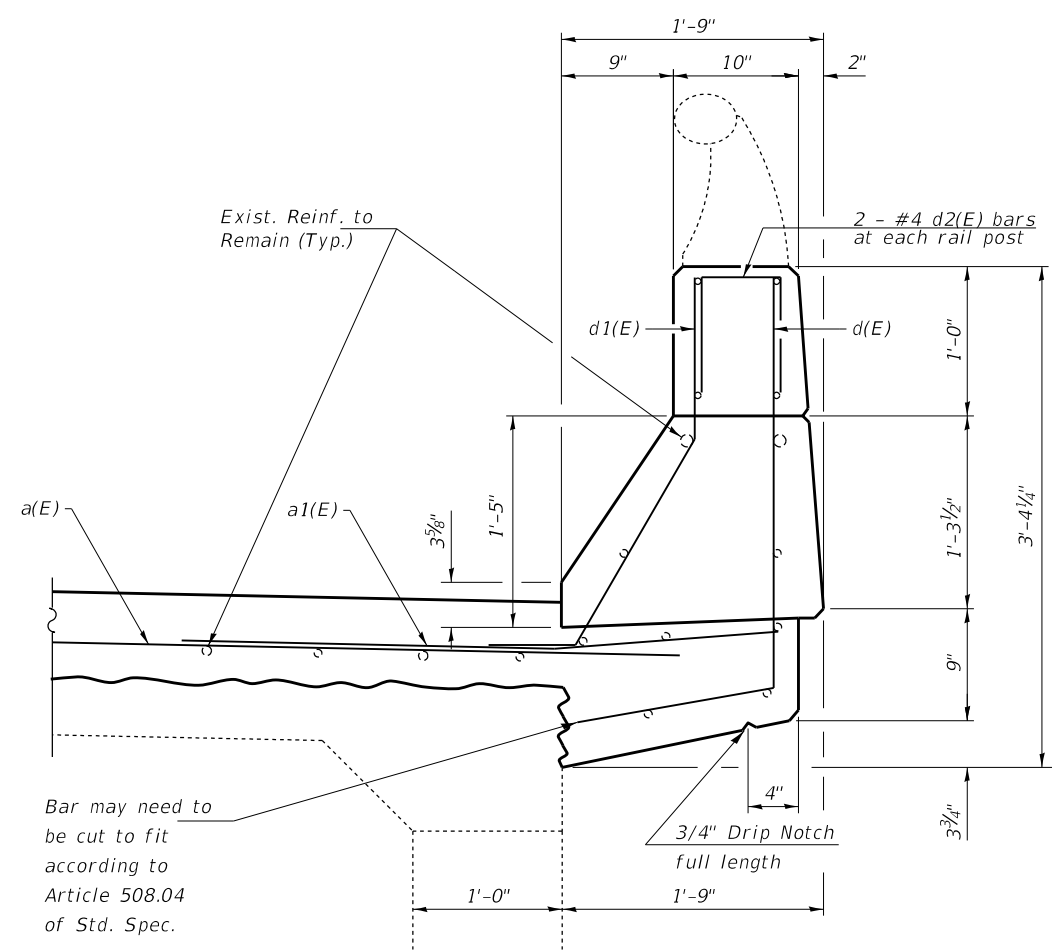


SECTION B-B
(Dimensions at RT L's to end of deck)

Notes:
Hatching indicates concrete removal.
Cross Hatching indicates HMA Surface Removal 2".



SECTION THRU DECK PARAPET



SECTION THRU APPROACH PARAPET

MODEL: Default
 FILE: h:\m\c_p\pub\harcam\dat\illink\spc\PIWIDOT\Documents\IBOT_Offices\Dir\et 7\Projects\74910\CADD\DATA\CAD\Sheet\074910-5-std-detailed.dgn

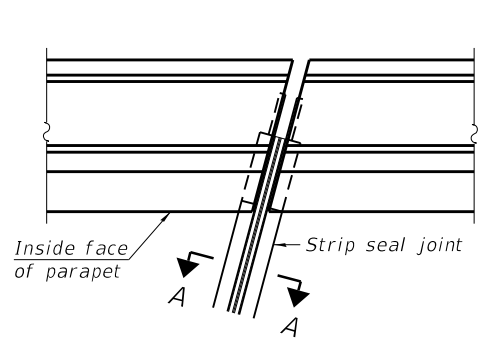
USER NAME = steffemk	DESIGNED - R. Walker	REVISED - 11/19/2019
DRAWN - R. Walker	REVISIONS -	
PLOT SCALE = 100.0000' / in.	CHECKED - D. Macklin	REVISIONS -
PLOT DATE = 12/10/2019	DATE - 5/9/2019	REVISIONS -

**STATE OF ILLINOIS
DEPARTMENT OF TRANSPORTATION**

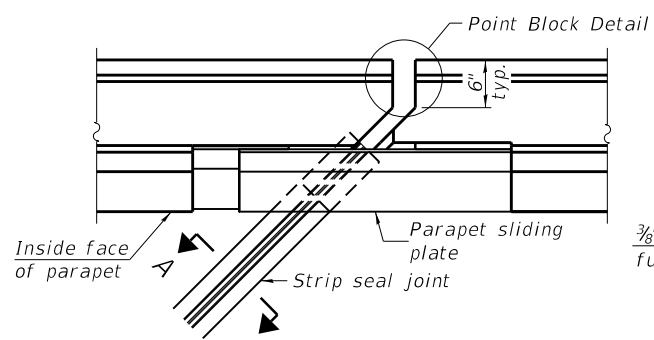
**EXPANSION JOINT REPLACEMENT DETAILS
SN 058-0089**

SCALE: SHEET 4 OF 10 SHEETS STA. TO STA.

F.A.I. RTE.	SECTION	COUNTY	TOTAL SHEETS	SHEET NO.
72	D7 BRIDGE REPAIRS 2020-2	MACON	14	8
CONTRACT NO. 74910				
ILLINOIS FED. AID PROJECT				

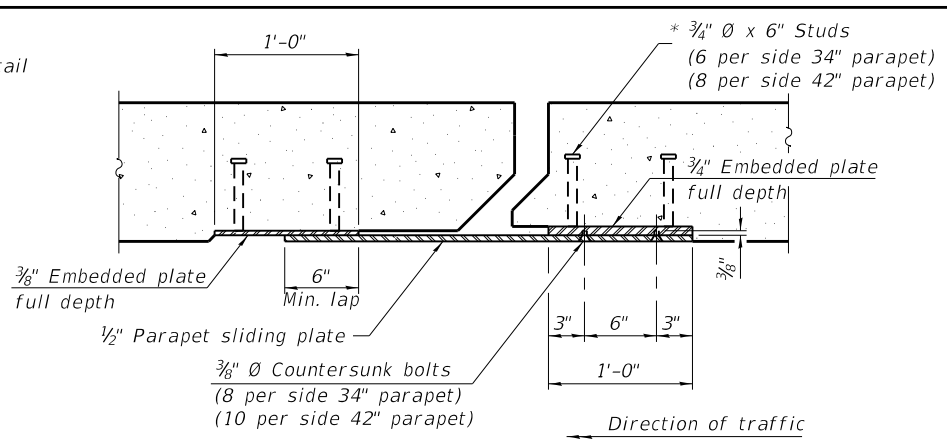


FOR SKEWS $\leq 30^\circ$



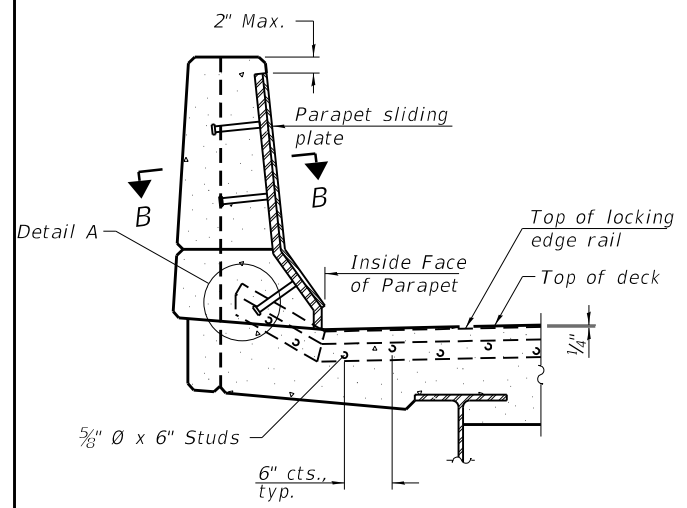
FOR SKEWS $> 30^\circ$

PLAN AT PARAPET



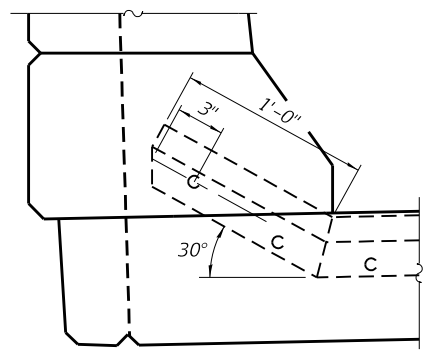
SECTION B-B

Notes:
 The strip seal shall be made continuous and shall have a minimum thickness of 1/4". The configuration of the strip seal shall match the configuration of the locking edge rails. Open or "webbed" strip seal gland configurations are not permitted. The gland shall be sized for a maximum rated movement of 4 inches.
 The locking edge rails depicted are configured for typical applications and are conceptual only. The actual configuration of the locking edge rails and matching strip seal may vary from manufacturer to manufacturer provided they fit the application and meet the minimum anchorage shown. Flanged edge rails, however, will not be allowed. Locking edge rails may exceed the 4 1/2" maximum depth provided the anchorage system is revised according to the manufacturer's recommendation.
 The manufacturer's recommended installation methods shall be followed.

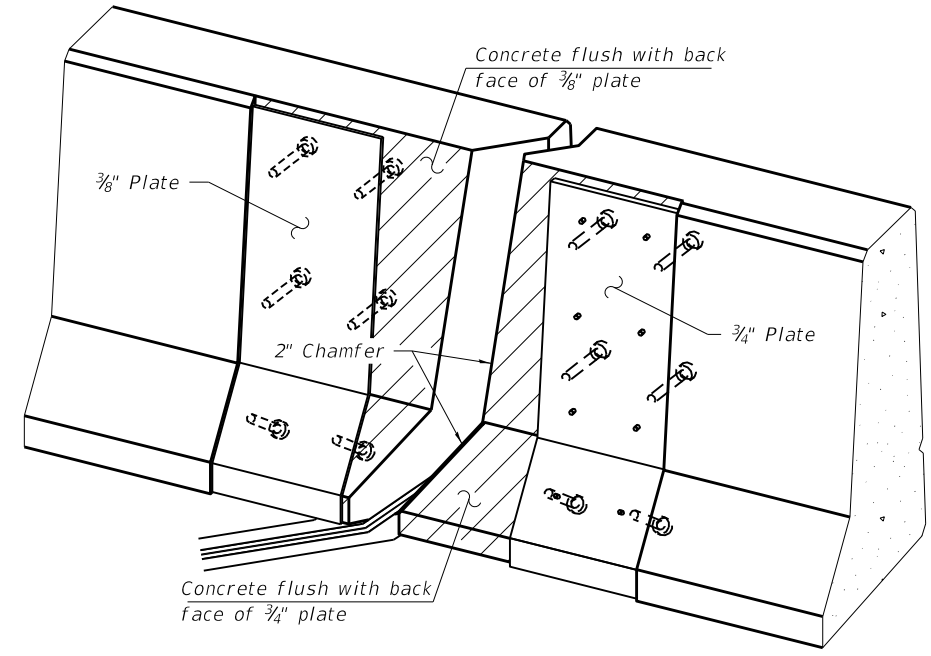


ELEVATION AT PARAPET

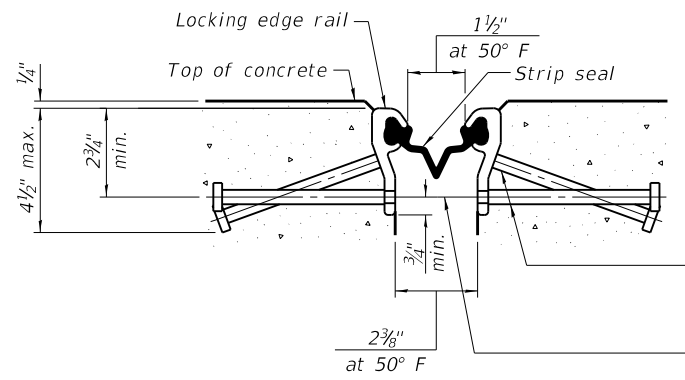
(Skews $> 30^\circ$ shown. Skews $\leq 30^\circ$ similar except as shown in plan view.)



DETAIL A



TRIMETRIC VIEW
(Showing embedded plates only)



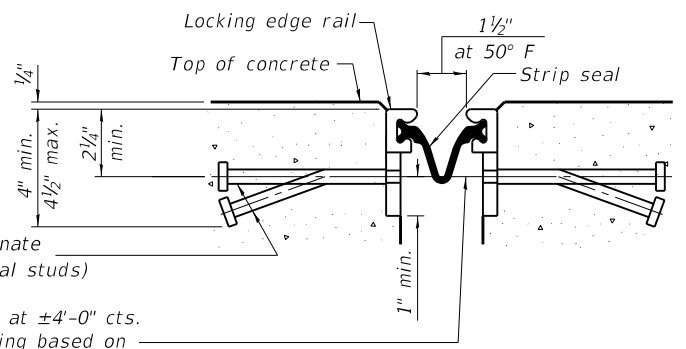
SHOWING ROLLED RAIL JOINT

* 5/8" Ø x 6" studs @ 6" cts. (alternate angled/bent studs with horizontal studs)

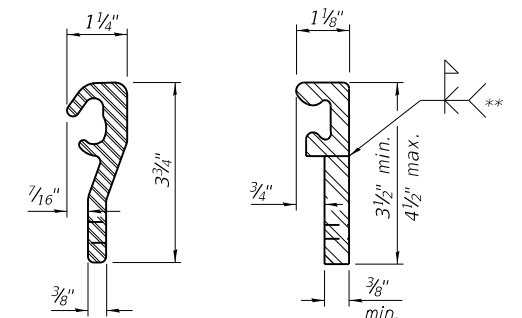
3/8" Ø threaded rods in 7/16" Ø holes at ±4'-0" cts. for holding the proper joint opening based on the temperature during the deck pour. Place to miss studs. All rods shall be burned, or sawed off flush with the plates after concrete is set.

SECTION A-A

* Granular or solid flux filled headed studs conforming to Article 1006.32 of the Std. Specs., automatically end welded.

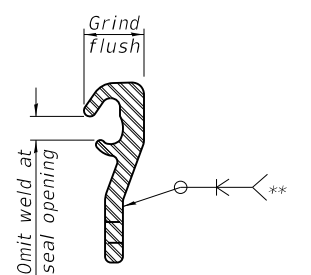


SHOWING WELDED RAIL JOINT



LOCKING EDGE RAILS

** Back gouge not required if complete joint penetration is verified by mock-up.



LOCKING EDGE RAIL SPLICE

The inside of the locking edge rail groove shall be free of weld residue. Rolled rail shown, welded rail similar.

BILL OF MATERIAL

Item	Unit	Total
Preformed Joint Strip Seal	Foot	88

MODEL: Default FILE: \\nas01\pub\baron\m.d\all\ink\poc\RW\DOT\Documents\DOT - Office\Drawings\79010\CAD\data\CAD\sheet\0774910-5-18-draw.dgn

EJ-SS

8-11-17

USER NAME = steffenmk	DESIGNED - R. Walker	REVISED - 11/19/2019
PLOT SCALE = 100.0000' / in.	DRAWN - R. Walker	REVISED -
PLOT DATE = 12/10/2019	CHECKED - D. Macklin	REVISED -
	DATE - 5/9/2019	REVISED -

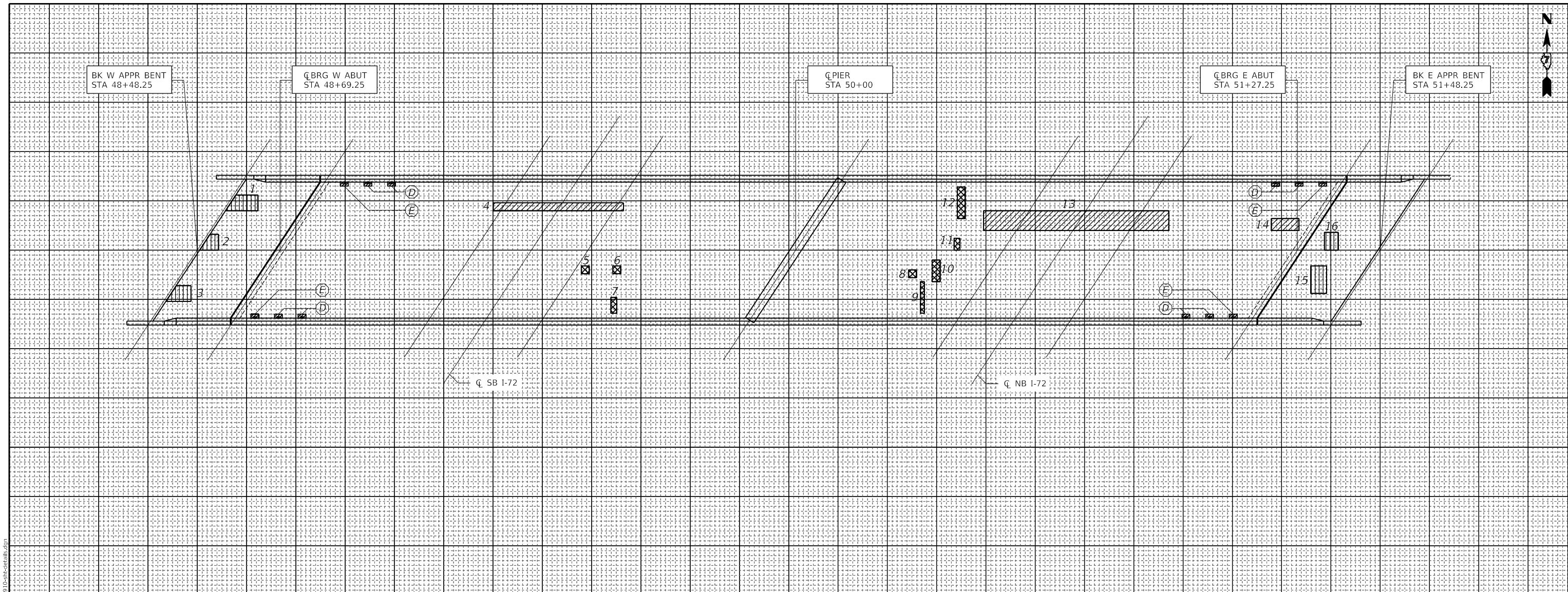
**STATE OF ILLINOIS
DEPARTMENT OF TRANSPORTATION**

STRUCTURE NO. 058-0089

SCALE: SHEET 6 OF 10 SHEETS STA. TO STA.

F.A.I. RTE.	SECTION	COUNTY	TOTAL SHEETS	SHEET NO.
72	D7 BRIDGE REPAIRS 2020-2	MACON	14	10
			CONTRACT NO. 74910	
ILLINOIS FED. AID PROJECT				

MODEL: Default
FILE NAME: p:\p1\p1room\do\illinois\proj\p1\DOT\Documents\DOT_Offices\Bricc_7\Projects\749_10\CAD\Drawings\CD\Sheet\07749_10\Detail\Detail.dwg



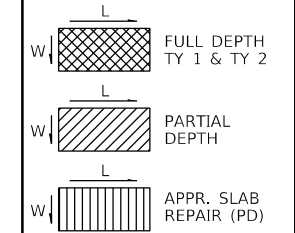
PATCH NO.	SIZE		APPROACH SLAB REPAIR (PARTIAL DEPTH) SQ YD	DECK SLAB REPAIR (PARTIAL) SQ YD	DECK SLAB REPAIR (FD TY 1) SQ YD	DECK SLAB REPAIR (FD TY 2) SQ YD
	LENGTH	WIDTH				
1	7.0	4.0	3.11			
2	3.5	4.0	1.56			
3	5.0	4.0	2.22			
4	33.0	2.0		7.33		
5	2.0	2.0			0.44	
6	2.0	2.0			0.44	
7	1.5	4.0				0.67
8	2.0	2.0			0.44	
9	1.0	8.0				0.89
10	2.0	5.5				1.22
11	1.5	3.0			0.50	
12	2.0	8.0				1.78
13	47.0	5.0		26.11		
14	7.0	3.0		2.33		
15	4.0	7.0	3.11			
16	3.5	4.5	1.75			
TOTALS			11.8	35.8	1.8	4.6

DECK DRAINS:

- (D) - Remove and Replace Existing Deck Drains - (2' x 1') x 8 = 16 sq ft / 9 = 1.8 sq yd
 - (E) - Remove Existing Deck Drain* - (2' x 1') x 4 = 8 sq ft / 9 = 0.9 sq yd
- 1.8 + 0.9 = 2.7 sq yd ~ Add 3 sq yd to FD TY 1 Qty.

* Cost of removing drain assembly, brackets and bolts included with Deck Slab Repair

THE LOCATIONS AND SIZES SHOWN GRAPHICALLY ABOVE ARE APPROXIMATE. SEE THIS TABLE FOR ACTUAL SIZES.



DATE OF SURVEY: 3-21-2019
SURVEY BY: DPM & RAW
METHOD OF SURVEY: VISUAL

ESTIMATED PAY QUANTITIES:

APPROACH SLAB REPAIR (PD)	12 SQ YD
DECK SLAB REPAIR (PD)	36 SQ YD
DECK SLAB REPAIR (FDTY1)	5 SQ YD
DECK SLAB REPAIR (FDTY2)	5 SQ YD

USER NAME = steffemk	DESIGNED - R. Walker	REVISED - 11/19/2019
PLOT SCALE = 100,0000' / in.	DRAWN - R. Walker	REVISED -
PLOT DATE = 12/10/2019	CHECKED - D. Macklin	REVISED -
	DATE - 5/9/2019	REVISED -

**STATE OF ILLINOIS
DEPARTMENT OF TRANSPORTATION**

**BRIDGE DECK PATCHING
SN 058-0089**

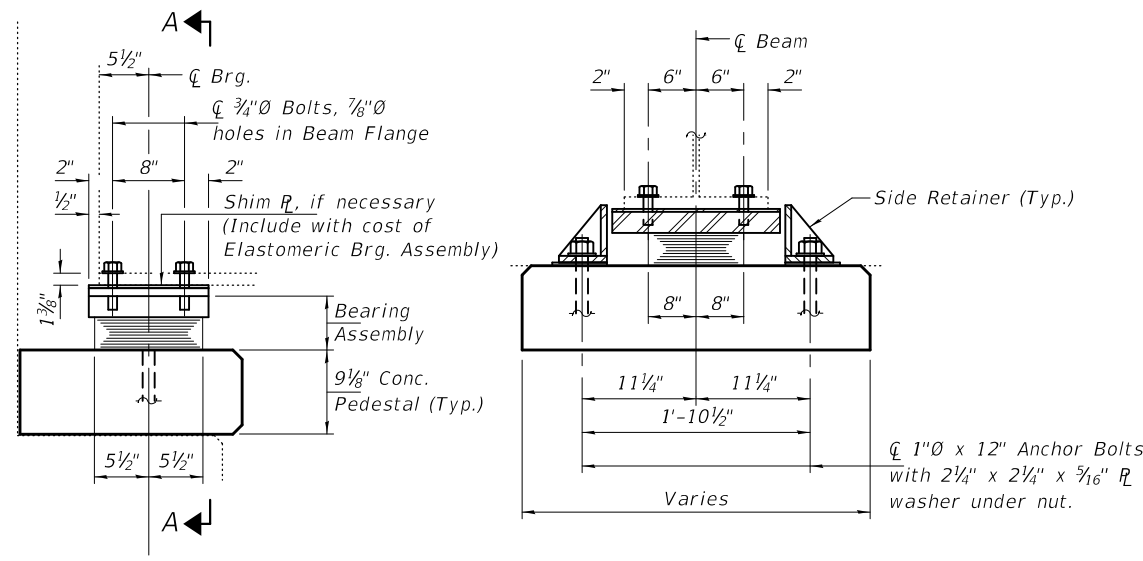
SCALE: SHEET 7 OF 10 SHEETS STA. TO STA.

F.A.I. RTE.	SECTION	COUNTY	TOTAL SHEETS	SHEET NO.
72	D7 BRIDGE REPAIRS 2020-2	MACON	14	11
CONTRACT NO. 74910				
ILLINOIS FED. AID PROJECT				

BEAM REACTIONS

R _P	(K)	74.8
R _L	(K)	39.9
Imp.	(K)	7.8
R (Total)	(K)	122.5

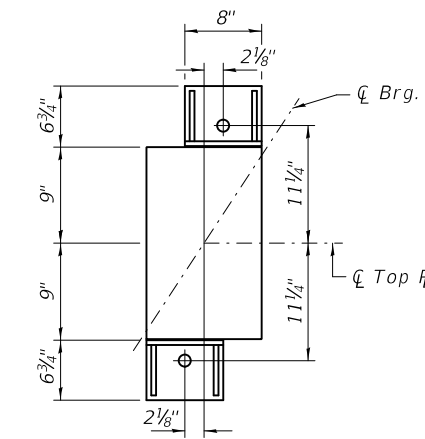
Notes:
 Diaphragm removal and reinstallation may be required to facilitate drilling holes. Cost included with Elastomeric Bearings Assembly Type I.
 Prior to ordering any material, the Contractor shall verify in the field all bearing height and shim thickness dimensions. Adjustment must account for deck heave due to pack rust (if present).
 Min. jack capacity = 74 Tons.
 Anchor bolts shall be ASTM F1554 all-thread (or an Engineer-approved alternate material) of the grade(s) and diameter(s) specified. ASTM A307 Grade C anchor bolts may be used in lieu of ASTM F1554 Grade 36 (F_y=36ksi). The corresponding specified grade of AASHTO M314 anchor bolts may be used in lieu of ASTM F1554.
 Drilled and set anchor bolts shall be installed according to Article 521.06 of the Standard Specifications.
 Cost of Side retainers and Stainless Steel plates shall be included in the cost of Elastomeric Bearing Assembly, Type I.
 All structural steel shall conform to AASHTO Classification M270 Gr. 36, unless otherwise noted.
 All new structural steel and bearing assembly shall be hot-dip galvanized. See Special Provisions for "Hot Dip Galvanizing For Structural Steel".
 Existing structural steel that will be in contact with new structural steel shall be cleaned and painted prior to erection as required by the Special Provision "Cleaning and Painting Contact Surface Areas of Existing Steel Structures".



ELEVATION AT ABUTMENT

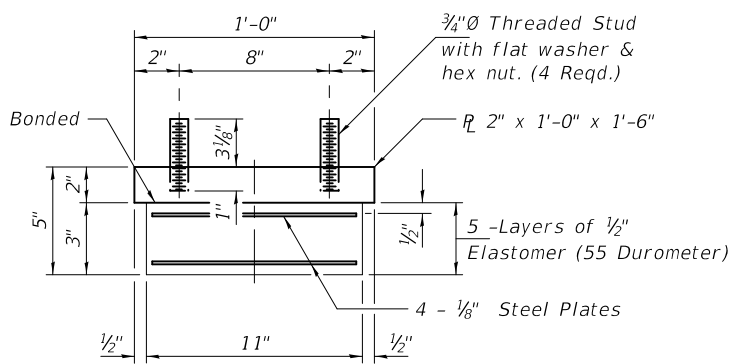
SECTION A-A

TYPE I ELASTOMERIC EXP. BRG.



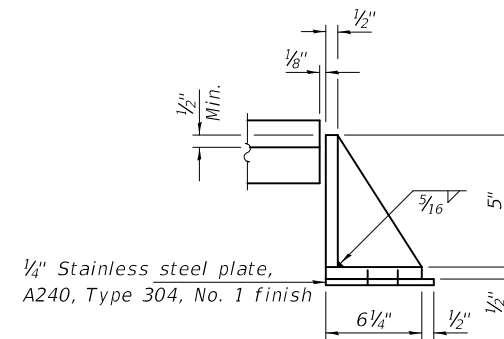
Interior & Exterior Bearing

BOLT HOLE LOCATIONS



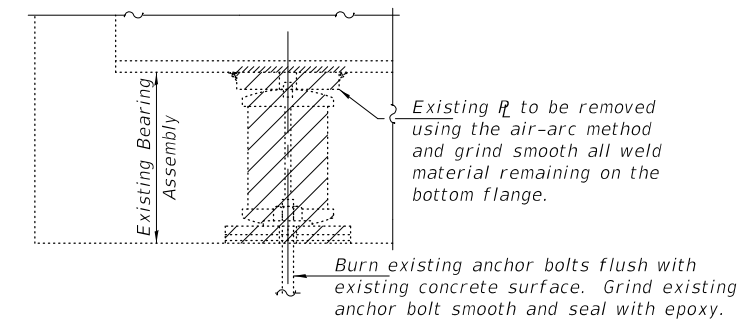
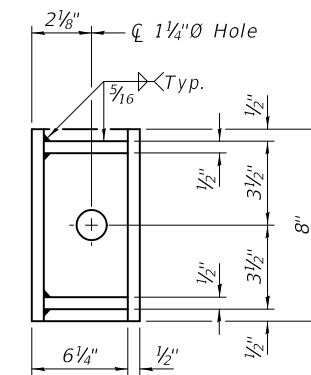
BEARING ASSEMBLY

Note:
 Shim plates shall not be placed under Bearing Assembly.



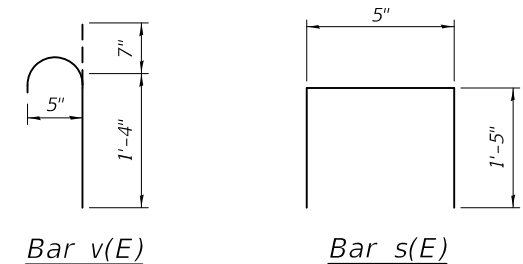
SIDE RETAINER

Equivalent rolled angle with stiffeners will be allowed in lieu of welded plates.



EXISTING BEARING REMOVAL DETAIL

Cost included with Jack and Remove Existing Bearings.



Bar v(E)

Bar s(E)

BILL OF MATERIAL

Item	Unit	Total
Elastomeric Bearing Assembly, Type I	Each	10
Jack and Remove Existing Bearings	Each	10
Concrete Structures	Cu. Yd.	1.89
Anchor Bolts, 1"Ø	Each	20
Reinforcement Bars, Epoxy Coated	Pound	650

TYI/REPS 5-17-2018

DESIGNED - CCC	EXAMINED - <i>Timothy A. Daulton</i>	DATE - JANUARY 29, 2020
CHECKED - SMR	ENGINEER OF STRUCTURAL SERVICES	
DRAWN - Venkat Reddy	PASSED - <i>Carl Berger</i>	REVISED -
CHECKED - CCC SMR	ENGINEER OF BRIDGES AND STRUCTURES	REVISED -

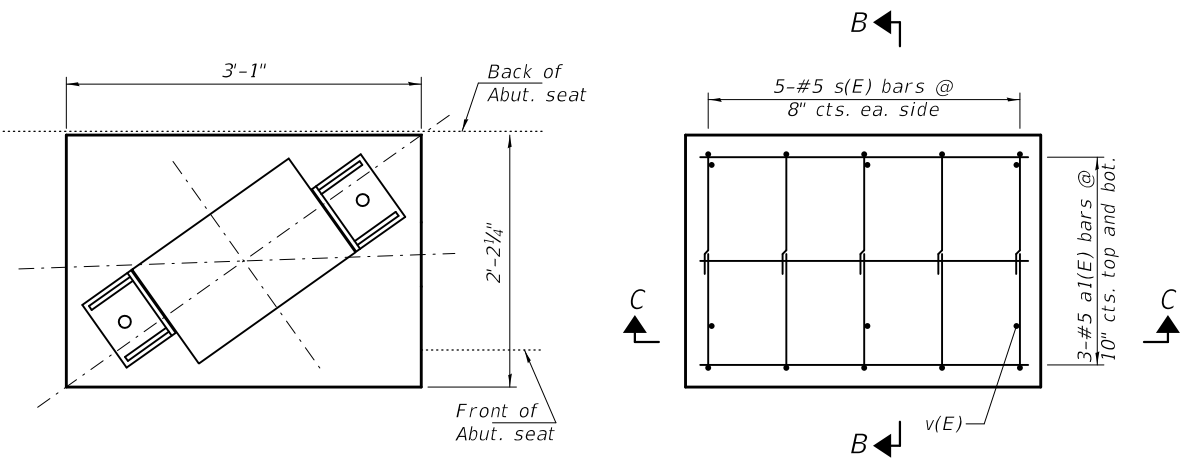
**STATE OF ILLINOIS
 DEPARTMENT OF TRANSPORTATION**

**BEARING REPLACEMENT DETAILS
 FAS 594B OVER I-72
 SN 058 - 0089**

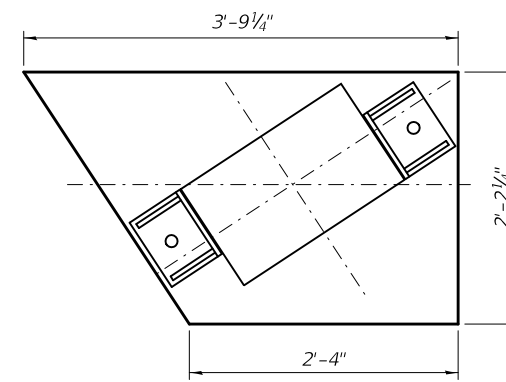
SHEET NO. 8 OF 10 SHEETS

F.A.S. RTE.	SECTION	COUNTY	TOTAL SHEETS	SHEET NO.
594B	D7 BRIDGE REPAIRS 2020-2	MACON	14	12
ILLINOIS			FED. AID PROJECT	

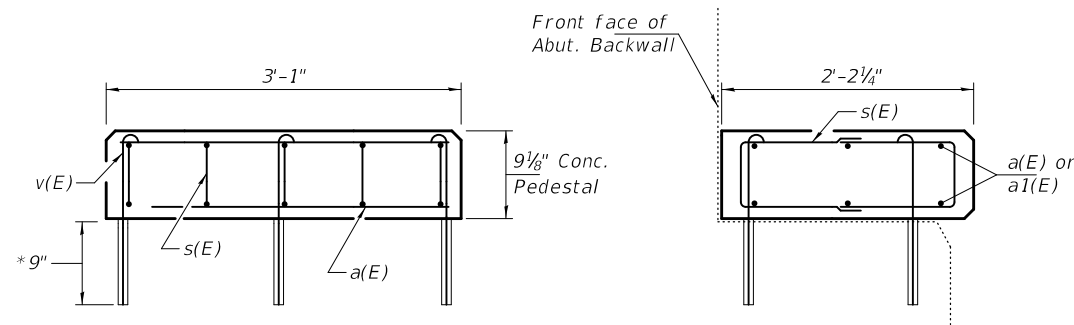
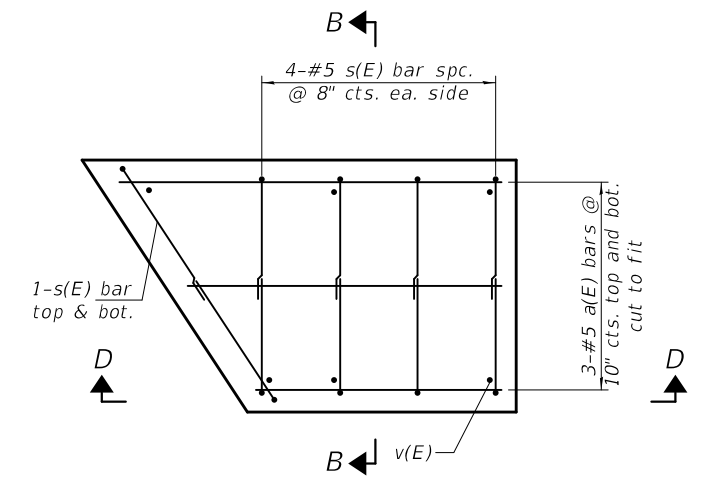
CONTRACT NO. 74910



PLAN VIEW-INTERIOR CONCRETE PEDESTAL



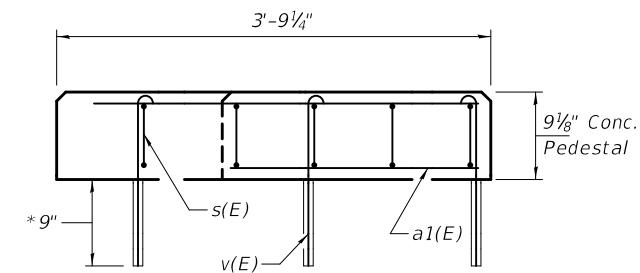
PLAN VIEW-EXTERIOR CONCRETE PEDESTAL



SECTION C-C

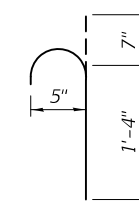
SECTION B-B

* Epoxy grout n(E) bars in 9" min. holes according to Article 584 of the Standard Specifications.

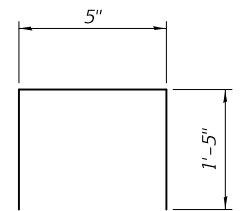


SECTION D-D

* Epoxy grout n(E) bars in 9" min. holes according to Article 584 of the Standard Specifications.



Bar v(E)



Bar s(E)

BILL OF MATERIAL

Bar	No.	Size	Length	Shape
a(E)	24	#5	3'-5"	—
a1(E)	36	#5	2'-9"	—
s(E)	100	#5	3'-3"	┌
v(E)	60	#5	1'-11"	└

DESIGNED - CCC
 CHECKED - SMR
 DRAWN - Venkat Reddy
 CHECKED - CCC SMR

EXAMINED
 PASSED
 ENGINEER OF STRUCTURAL SERVICES
 ENGINEER OF BRIDGES AND STRUCTURES

DATE - JANUARY 29, 2020
 REVISED -
 REVISED -

STATE OF ILLINOIS
 DEPARTMENT OF TRANSPORTATION

BEARING REPLACEMENT DETAILS
 FAS 594B OVER I-72
 SN 058-0089

SHEET NO. 9 OF 10 SHEETS

F.A.S. RTE.	SECTION	COUNTY	TOTAL SHEETS	SHEET NO.
594B	D7 BRIDGE REPAIRS 2020-2	MACON	14	13
CONTRACT NO. 74910				
ILLINOIS FED. AID PROJECT				

