

INDEX OF SHEETS

SHEET NO.	DESCRIPTION
1	COVER SHEET
2	INDEX OF SHEETS, STATE STANDARDS, AND GENERAL NOTES
3-7	SUMMARY OF QUANTITIES
8-9	TYPICAL SECTIONS
10-11	ALIGNMENT, TIES AND BENCHMARKS (TO BE ADDED)
12-13	ROADWAY AND PAVEMENT MARKING PLAN
14-19	TRAFFIC SIGNAL PLANS (IL. 50 AT 115TH ST.)
20-23	TRAFFIC SIGNAL PLANS (IL. 50 AT 122ND ST.)
24-27	INTERCONNECT PLANS
28	PAVEMENT PATCHING FOR HMA SURFACED PAVEMENT (BD-22)
29	CURB AND GUTTER REMOVAL AND REPLACEMENT (BD-24)
30	TRAFFIC CONTROL AND PROTECTION FOR SIDE ROADS, INTERSECTIONS, AND DRIVEWAYS (TC-10)
31	DISTRICT ONE TYPICAL PAVEMENT MARKINGS (TC-13)
32	SHORT TERM PAVEMENT MARKING LETTERS AND SYMBOLS (TC-16)
33	ARTERIAL ROAD INFORMATION SIGN (TC-22)
34	MAST ARM MOUNTED STREET NAME SIGNS (TS-02)
35-41	STANDARD TRAFFIC SIGNAL DESIGN DETAILS (TS-05)
42	PROJECT DETAIL FOR SINGLE PERPENDICULAR CURB RAMPS W/TURNING SPACE (PD-04A)

HIGHWAY STANDARDS

STANDARD NO.	DESCRIPTION
000001-07	STANDARD SYMBOLS, ABBREVIATIONS AND PATTERNS
424001-11	PERPENDICULAR CURB RAMPS FOR SIDEWALKS
442101-09	CLASS B PATCHES
442201-03	CLASS C AND D PATCHES
701011-04	OFF-RD MOVING OPERATIONS, 2L, 2W, DAY ONLY
701006-05	OFF-ROAD OPERATIONS, 2L, 2W, 15' (4.5 m) TO 24" (600 MM) FROM PAVEMENT EDGE
701101-05	OFF-RD MOVING OPERATIONS, MULTILANE, 15' (4.5 m) TO 24" (600 mm) FROM PAVEMENT EDGE
701301-04	LANE CLOSURE, 2L, 2W, SHORT TIME OPERATIONS
701311-03	LANE CLOSURE, 2L, 2W, MOVING OPERATIONS -DAY ONLY
701427-05	LANE CLOSURE, MULTILANE, INTERMITTENT OR MOVING OPERATION, FOR SPEEDS ≤ 40 MPH
701501-06	URBAN LANE CLOSURE, 2L, 2W, UNDIVIDED
701502-09	URBAN LANE CLOSURE, 2L, 2W, BI-DIRECTIONAL LEFT TURN LANE
701602-10	URBAN LANE CLOSURE, MULTILANE, 2W WITH BIDIRECTIONAL LEFT
701701-10	URBAN LANE CLOSURE, MULTILANE INTERSECTION
701801-06	SIDEWALK CORNER OR CROSSWALK CLOSURE
701901-08	TRAFFIC CONTROL DEVICES
814001-03	HANDHOLES
814006-02	DOUBLE HANDHOLES
857001-01	STANDARD PHASE DESIGNATION
862001-01	UNINTERRUPTABLE POWER SUPPLY (UPS)
873001-02	TRAFFIC SIGNAL GROUNDING AND BONDING
877001-08	STEEL MAST ARM ASSEMBLY AND POLE 16' THROUGH 55'
878001-10	CONCRETE FOUNDATION DETAILS
880006-01	TRAFFIC SIGNAL MOUNTING DETAILS
886001-01	DETECTOR LOOP INSTALLATIONS
886006-01	TYPICAL LAYOUTS FOR DETECTION LOOPS

GENERAL NOTES

- BEFORE STARTING ANY EXCAVATION, THE CONTRACTOR SHALL CALL "J.U.L.I.E." AT (800) 892-0123 OR 811 FOR FIELD LOCATIONS OF BURIED ELECTRIC, TELEPHONE AND GAS UTILITIES. (48 HOUR NOTIFICATION IS REQUIRED)
- THE CONTRACTOR SHALL COORDINATE CONSTRUCTION ACTIVITIES WITH UTILITY COMPANIES, AND THE VILLAGE OF ALSIP.
- THE CONTRACTOR WILL NOT BE ALLOWED TO SET UP A YARD OR FIELD OFFICE ON STATE PROPERTY WITHOUT WRITTEN PERMISSION FROM THE DEPARTMENT.
- ANY PAVEMENT MARKINGS AND RAISED REFLECTIVE PAVEMENT MARKERS OBLITERATED BY MILLING AND RESURFACING OPERATIONS ON SIDE STREETS AND ENTRANCES SHALL BE REPLACED AND PAID FOR IN KIND.
- ALL DAMAGE TO EXISTING PAVEMENT MARKINGS OR RAISED REFLECTIVE PAVEMENT MARKERS OUTSIDE THE REMOVAL LINE SHOWN ON THE PLANS SHALL BE REPLACED AT NO ADDITIONAL COST TO THE DEPARTMENT.
- BEFORE BEGINNING ANY WORK, THE CONTRACTOR SHALL RETAIN AND RECORD FOR FUTURE REFERENCE, ALL EXISTING PAVEMENT MARKING LINES (AND RAISED REFLECTIVE PAVEMENT MARKERS) IN ORDER THAT THESE LOCATIONS CAN BE RE-ESTABLISHED FOR STRIPING. EXACT LOCATIONS OF ALL PAVEMENT MARKINGS SHALL BE AS DIRECTED BY THE RESIDENT ENGINEER.
- ALL PAVEMENT PATCHING LOCATIONS WILL BE DETERMINED IN THE FIELD BY THE RESIDENT ENGINEER/TECHNICIAN.
- DRAINAGE ADJUSTMENT OR RECONSTRUCTION LOCATIONS WILL BE DETERMINED IN THE FIELD BY THE RESIDENT ENGINEER/TECHNICIAN.
- IT SHALL BE THE CONTRACTOR'S RESPONSIBILITY TO VERIFY ALL DIMENSIONS AND CONDITIONS EXISTING IN THE FIELD PRIOR TO CONSTRUCTION AND ORDERING OF MATERIALS.
- FRAMES AND GRATES ADJUSTMENT OF PRIVATE UTILITIES WITHIN THE LIMITS OF THE IMPROVEMENTS SHALL BE DONE BY THEIR RESPECTIVE OWNERS AND ARE NOT PART OF THIS CONTRACT.
- FOR FRAMES AND LIDS ADJUSTMENT WITHOUT MILLING, REUSE EXISTING FRAME AND LID UNLESS OTHERWISE SPECIFIED IN THE PLANS.
- THE CONTRACTOR SHALL CONTACT DISTRICT ONE ARTERIAL TRAFFIC CONTROL SUPERVISOR AT KALPANA.KANNAN-HOSADURGA@ILLINOIS.GOV MINIMUM OF 72 HOURS IN ADVANCE OF BEGINNING WORK.
- THE ENGINEER SHALL CONTACT PATRICE HARRIS, ARTERIAL TRAFFIC FIELD ENGINEER, AT PATRICE.HARRIS@ILLINOIS.GOV A MINIMUM OF TWO (2) WEEKS PRIOR TO THE PLACEMENT OF PERMANENT PAVEMENT MARKINGS.
- THE CONTRACTOR SHALL BE REQUIRED TO PROVIDE ACCESS TO ABUTTING PROPERTY AT ALL TIMES DURING THE CONSTRUCTION OF THIS PROJECT.
- DO NOT SCALE PLANS FOR CONSTRUCTION DIMENSIONS.
- DOUBLE LANE MARKERS ARE TO BE USED AS SHOWN ON THE DISTRICT ONE DETAIL "TYPICAL APPLICATIONS - RAISED REFLECTIVE PAVEMENT MARKERS (SNOW-PLOW RESISTANT)".
- LANDSCAPED AREAS AFFECTED BY SIDEWALK CONSTRUCTION SHALL BE RESTORED WITH 18" WIDE STRIP OF "SODDING, SALT TOLERANT" AND "TOPSOIL FURNISH AND PLACE, 4-INCH" INSTALLED FROM THE BACK OF THE SIDEWALK, OR AS DETERMINED BY THE RESIDENT ENGINEER.
- PAVEMENT MARKING TAPE, TYPE III SHALL BE USED FOR SHORT TERM PAVEMENT MARKINGS ON ALL FINAL SURFACES.
- UNLESS OTHER CONDITIONS WARRANT EXTENDED LANE CLOSURE AS DETERMINED AND APPROVED IN WRITING BY THE RESIDENT ENGINEER OR AS PROVIDED FOR IN THE CONTRACT SPECIFICATIONS, OVERNIGHT CLOSURES SHALL NOT BE ALLOWED FOR REHABILITATION PROJECTS INVOLVING DAYTIME MILLING AND RESURFACING OPERATIONS AND CLASS D PATCHING.
- LOCATION OF COMBINATION CONCRETE CURB AND GUTTER REMOVAL AND REPLACEMENT [OR COMBINATION CURB AND GUTTER (THE TYPE SPECIFIED ON THE PLANS)], WILL BE DETERMINED IN THE FIELD BY THE RESIDENT ENGINEER/TECHNICIAN.
- THE CONTRACTOR SHALL USE CARE IN GRADING OR EXCAVATING NEAR ANY AND ALL EXISTING ITEMS THAT WILL NOT BE REMOVED INCLUDING PREVIOUSLY SEEDED AREAS. ANY DAMAGE DONE TO EXISTING ITEMS BY THE CONTRACTOR SHALL BE REPAIRED AT THE CONTRACTOR'S OWN EXPENSE TO THE SATISFACTION OF THE ENGINEER.
- THE CONTRACTOR SHALL MAINTAIN PEDESTRIAN ACCESS AT ALL TIMES DURING CONSTRUCTION.
- THE CONTRACTOR SHALL BE RESPONSIBLE FOR THE REPLACEMENT OF ANY DETECTOR LOOPS DAMAGED DURING CONSTRUCTION.

MODEL: Default
 FILE: \\bls01\pub\baron\room\dat\illinois.gov\pww\DOT\Documents\DOT_Offices\Dist1ct_1\Projects\1236\1236\CADD\Drawings\1236_18_sht-egenere.dgn

USER NAME = va@adolliv	DESIGNED -	REVISED -
	DRAWN -	REVISED -
PLOT SCALE = 100.0000' / in.	CHECKED -	REVISED -
PLOT DATE = 12/13/2019	DATE -	REVISED -

**STATE OF ILLINOIS
 DEPARTMENT OF TRANSPORTATION**

**IL RTE. 50 (CICERO AVE.) - AT 115TH ST. AND 122ND ST
 INDEX OF SHEETS, STATE STANDARDS & GENERAL NOTES**

SCALE: SHEET OF SHEETS STA. TO STA.

F.A.P. RTE.	SECTION	COUNTY	TOTAL SHEETS	SHEET NO.
350	3068-N	COOK	42	2
CONTRACT NO. 62G01				
ILLINOIS FED. AID PROJECT				

SUMMARY OF QUANTITIES			TOTAL QUANTITIES	CONSTRUCTION TYPE CODE					
CODE NO	ITEM	UNIT		90% FED 10% STATE ROADWAY 115TH ST 0005	100% STATE 0005	90% FED 10% STATE TRAFFIC SIGNALS 115TH ST 0021	100% VILLAGE OF AL SIP 115TH ST EVP 0021	80% FED 20% STATE TRAFFIC SIGNALS 122ND ST 0021	90% FED 10% STATE INTERCONNECT SIGNALS 0021
20200100	EARTH EXCAVATION	CU YD	63	63					
21101625	TOPSOIL FURNISH AND PLACE, 6"	SO YD	40	40					
25200100	SODDING	SO YD	40	40					
30300112	AGGREGATE SUBGRADE IMPROVEMENT 12"	SO YD	245	245					
35600724	HOT-MIX ASPHALT BASE COURSE WIDENING, 12"	SO YD	61	61					
40604062	HOT-MIX ASPHALT SURFACE COURSE, IL-9.5, MIX "D", N70	TON	27	27					
42001300	PROTECTIVE COAT	SO YD	100	100					
42400200	PORTLAND CEMENT CONCRETE SIDEWALK 5 INCH	SO FT	200	200					
* 42400800	DETECTABLE WARNINGS	SO FT	10	10					
44000300	CURB REMOVAL	FOOT	236	236					
44000600	SIDEWALK REMOVAL	SO FT	200	200					
44003100	MEDIAN REMOVAL	SO FT	554	554					
44003510	MEDIAN REMOVAL PARTIAL DEPTH	SO FT	1320	1320					
44200970	CLASS B PATCHES, TYPE II, 10 INCH	SO YD	88	88					
44200974	CLASS B PATCHES, TYPE III, 10 INCH	SO YD	35	35					
	* SPECIALTY ITEMS								

SUMMARY OF QUANTITIES			TOTAL QUANTITIES	CONSTRUCTION TYPE CODE					
CODE NO	ITEM	UNIT		90% FED 10% STATE ROADWAY 115TH ST 0005	100% STATE 0005	90% FED 10% STATE TRAFFIC SIGNALS 115TH ST 0021	100% VILLAGE OF AL SIP 115TH ST EVP 0021	80% FED 20% STATE TRAFFIC SIGNALS 122ND ST 0021	90% FED 10% STATE INTERCONNECT SIGNALS 0021
44200976	CLASS B PATCHES, TYPE IV, 10 INCH	SO YD	53	53					
44201299	DOWEL BARS 1 1/2"	EACH	224	224					
44201815	CLASS D PATCHES, TYPE II, 14 INCH	SO YD	279	279					
44201819	CLASS D PATCHES, TYPE III, 14 INCH	SO YD	112	112					
44201821	CLASS D PATCHES, TYPE IV, 14 INCH	SO YD	167	167					
44213200	SAW CUTS	FOOT	830	830					
60254340	CATCH BASINS TO BE RECONSTRUCTED WITH NEW TYPE 24 FRAME AND GRATE	EACH	5	5					
60300305	FRAMES AND LIDS TO BE ADJUSTED	EACH	2	2					
* 66900200	NON-SPECIAL WASTE DISPOSAL	CU YD	31	31					
* 66900530	SOIL DISPOSAL ANALYSIS	EACH	1	1					
* 66901001	REGULATED SUBSTANCES PRE-CONSTRUCTION PLAN	LSUM	1	1					
* 66901003	REGULATED SUBSTANCES FINAL CONSTRUCTION REPORT	LSUM	1	1					
* 66901006	REGULATED SUBSTANCES MONITORING	CAL DA	10	10					

FILE NAME =	USER NAME = vallodadiv	DESIGNED -	REVISED -	STATE OF ILLINOIS DEPARTMENT OF TRANSPORTATION	IL. RTE. 50 (CICERO AVE.) - AT 115TH ST. AND 122ND ST. SUMMARY OF QUANTITIES	F.A.P. RTE.	SECTION	COUNTY	TOTAL SHEETS	SHEET NO.
pw:\planroom\dtd\111\mof.gov\PI\DOT\Documents\DOT	Files\District\Projects\DI2368\CADD\Design\DI2368-sh	DRAWN -	REVISED -			350	306B-N	COOK	42	3
PLOT SCALE = 100,0000' / 1in	CHECKED -	REVISED -	SCALE:			SHEET NO.	OF SHEETS	STA.	TO STA.	FED. ROAD DIST. NO. 1 ILLINOIS FED. AID PROJECT
PLOT DATE = 12/13/2019	DATE -	REVISED -	CONTRACT NO. 62G01							

SUMMARY OF QUANTITIES			TOTAL QUANTITIES	CONSTRUCTION TYPE CODE					
CODE NO	ITEM	UNIT		90% FED 10% STATE ROADWAY 115TH ST 0005	100% STATE 0005	90% FED 10% STATE TRAFFIC SIGNALS 115TH ST 0021	100% VILLAGE OF AL SIP 115TH ST EVP 0021	80% FED 20% STATE TRAFFIC SIGNALS 122ND ST 0021	90% FED 10% STATE INTERCONNECT SIGNALS 0021
67000400	ENGINEER'S FIELD OFFICE, TYPE A	CAL MO	6	6					
67100100	MOBILIZATION	L SUM	1	1					
70102620	TRAFFIC CONTROL AND PROTECTION, STANDARD 701501	L SUM	1	1					
70102622	TRAFFIC CONTROL AND PROTECTION, STANDARD 701502	L SUM	1	1					
70102632	TRAFFIC CONTROL AND PROTECTION, STANDARD 701602	L SUM	1	1					
70102635	TRAFFIC CONTROL AND PROTECTION, STANDARD 701701	L SUM	1	1					
70102640	TRAFFIC CONTROL AND PROTECTION, STANDARD 701801	L SUM	1	1					
70300100	SHORT TERM PAVEMENT MARKING	FOOT	5310	5310					
70300150	SHORT TERM PAVEMENT MARKING REMOVAL	SO FT	1770	1770					
70300210	TEMPORARY PAVEMENT MARKING LETTERS AND SYMBOLS	SO FT	117	117					
70300220	TEMPORARY PAVEMENT MARKING - LINE 4"	FOOT	2035	2035					
70300240	TEMPORARY PAVEMENT MARKING - LINE 6"	FOOT	855	855					
* SPECIALTY ITEMS									

SUMMARY OF QUANTITIES			TOTAL QUANTITIES	CONSTRUCTION TYPE CODE					
CODE NO	ITEM	UNIT		90% FED 10% STATE ROADWAY 115TH ST 0005	100% STATE 0005	90% FED 10% STATE TRAFFIC SIGNALS 115TH ST 0021	100% VILLAGE OF AL SIP 115TH ST EVP 0021	80% FED 20% STATE TRAFFIC SIGNALS 122ND ST 0021	90% FED 10% STATE INTERCONNECT SIGNALS 0021
70300260	TEMPORARY PAVEMENT MARKING - LINE 12"	FOOT	96	96					
70300280	TEMPORARY PAVEMENT MARKING - LINE 24"	FOOT	77	77					
70300520	PAVEMENT MARKING TAPE, TYPE III 4"	FOOT	5310	5310					
* 72000100	SIGN PANEL - TYPE 1	SO FT	12			12			
* 72000200	SIGN PANEL - TYPE 2	SO FT	37.5			25	12.5		
* 78000100	THERMOPLASTIC PAVEMENT MARKING - LETTERS AND SYMBOLS	SO FT	117	117					
* 78000200	THERMOPLASTIC PAVEMENT MARKING - LINE 4"	FOOT	2035	2035					
* 78000400	THERMOPLASTIC PAVEMENT MARKING - LINE 6"	FOOT	855	855					
* 78000600	THERMOPLASTIC PAVEMENT MARKING - LINE 12"	FOOT	96	96					
* 78000650	THERMOPLASTIC PAVEMENT MARKING - LINE 24"	FOOT	77	77					
* 78008200	POLYUREA PAVEMENT MARKING TYPE I - LETTERS AND SYMBOLS	SO FT	78	78					
* 78008210	POLYUREA PAVEMENT MARKING TYPE I - LINE 4"	FOOT	1292	1292					
* 78008230	POLYUREA PAVEMENT MARKING TYPE I - LINE 6"	FOOT	978	978					
* 78008250	POLYUREA PAVEMENT MARKING TYPE I - LINE 12"	FOOT	51	51					
* 78008270	POLYUREA PAVEMENT MARKING TYPE I - LINE 24"	FOOT	73	73					

FILE NAME =	USER NAME = valladariv	DESIGNED -	REVISED -
pw:\planroom\dtd\111\mof.gov\PI\DOT\Documents\VDOT	Offices\District\Projects\DI23618\CADD\Design\DI23618-sh	DRAWN -	REVISED -
	PLOT SCALE = 100.0000' / 1in	CHECKED -	REVISED -
	PLOT DATE = 12/13/2019	DATE -	REVISED -

**STATE OF ILLINOIS
DEPARTMENT OF TRANSPORTATION**

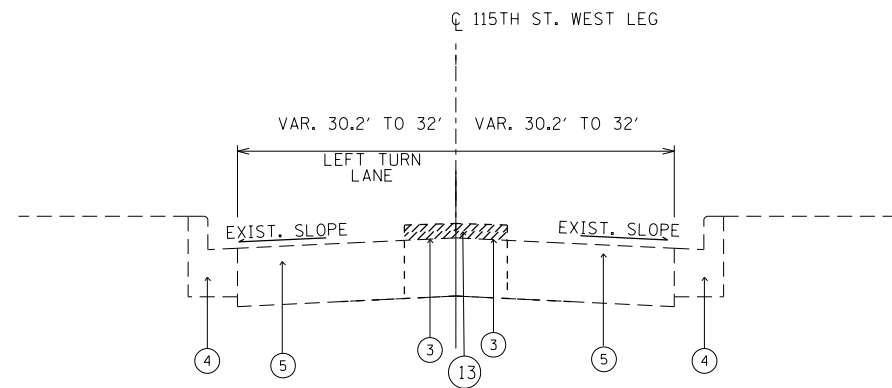
**IL. RTE. 50 (CICERO AVE.) - AT 115TH ST. AND 122ND ST.
SUMMARY OF QUANTITIES**

F.A.P. RTE.	SECTION	COUNTY	TOTAL SHEETS	SHEET NO.
350	3068-N	COOK	42	4
FED. ROAD DIST. NO. 1 ILLINOIS FED. AID PROJECT			CONTRACT NO. 62601	

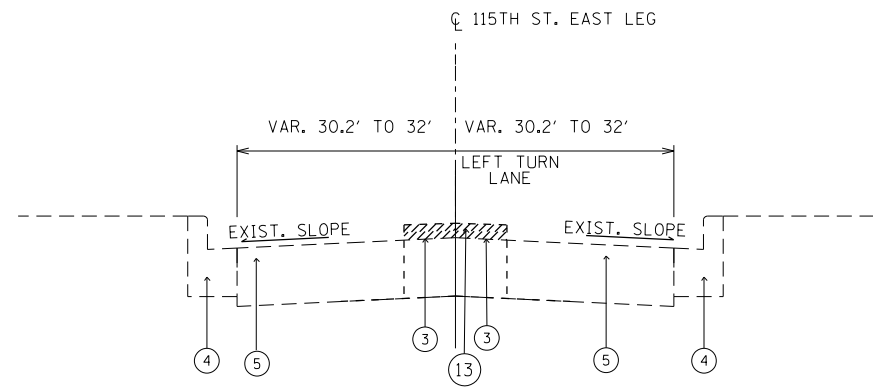
SUMMARY OF QUANTITIES				CONSTRUCTION TYPE CODE						SUMMARY OF QUANTITIES				CONSTRUCTION TYPE CODE					
CODE NO	ITEM	UNIT	TOTAL QUANTITIES	90% FED 10% STATE ROADWAY 115TH ST 0005	100% STATE 0005	90% FED 10% STATE TRAFFIC SIGNALS 115TH ST 0021	100% VILLAGE OF ALSIP 115TH ST EVP 0021	80% FED 20% STATE TRAFFIC SIGNALS 122ND ST 0021	90% FED 10% STATE INTERCONNECT SIGNALS 0021	CODE NO	ITEM	UNIT	TOTAL QUANTITIES	90% FED 10% STATE ROADWAY 115TH ST 0005	100% STATE 0005	90% FED 10% STATE TRAFFIC SIGNALS 115TH ST 0021	100% VILLAGE OF ALSIP 115TH ST EVP 0021	80% FED 20% STATE TRAFFIC SIGNALS 122ND ST 0021	90% FED 10% STATE INTERCONNECT SIGNALS 0021
* 81028200	UNDERGROUND CONDUIT, GALVANIZED STEEL, 2" DIA.	FOOT	946			679			267	* 87301225	ELECTRIC CABLE IN CONDUIT, SIGNAL NO. 14 3C	FOOT	1243			824		419	
* 81028220	UNDERGROUND CONDUIT, GALVANIZED STEEL, 3" DIA.	FOOT	151			131		20		* 87301245	ELECTRIC CABLE IN CONDUIT, SIGNAL NO. 14 5C	FOOT	2655			1678		977	
* 81028240	UNDERGROUND CONDUIT, GALVANIZED STEEL, 4" DIA.	FOOT	574			379		195		* 87301255	ELECTRIC CABLE IN CONDUIT, SIGNAL NO. 14 7C	FOOT	2075			1635		440	
* 81400100	HANDHOLE	EACH	5			5				* 87301305	ELECTRIC CABLE IN CONDUIT, LEAD-IN, NO. 14 1 PAIR	FOOT	1933			1933			
* 81400200	HEAVY-DUTY HANDHOLE	EACH	2			2				* 87301805	ELECTRIC CABLE IN CONDUIT, SERVICE, NO. 6 2 C	FOOT	106			106			
* 81400300	DOUBLE HANDHOLE	EACH	1			1				* 87301900	ELECTRIC CABLE IN CONDUIT, EQUIPMENT GROUNDING CONDUCTOR, NO. 6 1C	FOOT	986			726		260	
* 85000200	MAINTENANCE OF EXISTING TRAFFIC SIGNAL INSTALLATION	EACH	2					1	1	* 87502500	TRAFFIC SIGNAL POST, GALVANIZED STEEL 16 FT.	EACH	5			4		1	
* 86400100	TRANSCEIVER - FIBER OPTIC	EACH	1						1	* 87700180	STEEL MAST ARM ASSEMBLY AND POLE, 28 FT.	EACH	1					1	
* 87300925	ELECTRIC CABLE IN CONDUIT, TRACER, NO. 14 1C	FOOT	1277						1277	* 87700250	STEEL MAST ARM ASSEMBLY AND POLE, 42 FT.	EACH	1			1			
* 87301215	ELECTRIC CABLE IN CONDUIT, SIGNAL NO. 14 2C	FOOT	751			488		263											
* SPECIALTY ITEMS																			

SUMMARY OF QUANTITIES				CONSTRUCTION TYPE CODE						SUMMARY OF QUANTITIES				CONSTRUCTION TYPE CODE					
CODE NO	ITEM	UNIT	TOTAL QUANTITIES	90% FED 10% STATE ROADWAY 115TH ST 0005	100% STATE 0005	90% FED 10% STATE TRAFFIC SIGNALS 115TH ST 0021	100% VILLAGE OF ALSIP 115TH ST EVP 0021	80% FED 20% STATE TRAFFIC SIGNALS 122ND ST 0021	90% FED 10% STATE INTERCONNECT SIGNALS 0021	CODE NO	ITEM	UNIT	TOTAL QUANTITIES	90% FED 10% STATE ROADWAY 115TH ST 0005	100% STATE 0005	90% FED 10% STATE TRAFFIC SIGNALS 115TH ST 0021	100% VILLAGE OF ALSIP 115TH ST EVP 0021	80% FED 20% STATE TRAFFIC SIGNALS 122ND ST 0021	90% FED 10% STATE INTERCONNECT SIGNALS 0021
* 87700280	STEEL MAST ARM ASSEMBLY AND POLE, 48 FT.	EACH	2			2				* 88102717	PEDESTRIAN SIGNAL HEAD, LED, 1-FACE, BRACKET MOUNTED WITH COUNTDOWN TIMER	EACH	4			2		2	
* 87700290	STEEL MAST ARM ASSEMBLY AND POLE, 50 FT.	EACH	1			1				* 88200410	TRAFFIC SIGNAL BACKPLATE, LOUVERED, FORMED PLASTIC	EACH	14			12		2	
* 87800100	CONCRETE FOUNDATION, TYPE A	FOOT	24			20		4		* 88500100	INDUCTIVE LOOP DETECTOR	EACH	6			6			
* 87800150	CONCRETE FOUNDATION, TYPE C	FOOT	4			4				* 88600100	DETECTOR LOOP, TYPE I	FOOT	332			332			
* 87800400	CONCRETE FOUNDATION, TYPE E 30-INCH DIAMETER	FOOT	10					10		* 88800100	PEDESTRIAN PUSH-BUTTON	EACH	3			2		1	
* 87800415	CONCRETE FOUNDATION, TYPE E 36-INCH DIAMETER	FOOT	54			54				* 89000100	TEMPORARY TRAFFIC SIGNAL INSTALLATION	EACH	1			1			
* 87900200	DRILL EXISTING HANDHOLE	EACH	7					6	1	* 89501400	RELOCATE EXISTING EMERGENCY VEHICLE PRIORITY SYSTEM, DETECTOR UNIT	EACH	2					2	
* 88030020	SIGNAL HEAD, LED, 1-FACE, 3-SECTION, MAST-ARM MOUNTED	EACH	9			8		1		* 89501410	RELOCATE EXISTING EMERGENCY VEHICLE PRIORITY SYSTEM, PHASING UNIT	EACH	1				1		
* 88030050	SIGNAL HEAD, LED, 1-FACE, 3-SECTION, BRACKET MOUNTED	EACH	3					3		* 89502200	MODIFY EXISTING CONTROLLER	EACH	1						1
* 88030100	SIGNAL HEAD, LED, 1-FACE, 5-SECTION, BRACKET MOUNTED	EACH	5			4		1		* 89502210	MODIFY EXISTING CONTROLLER CABINET	EACH	1						1
* 88030110	SIGNAL HEAD, LED, 1-FACE, 5-SECTION, MAST-ARM MOUNTED	EACH	5			4		1		* 89502300	REMOVE ELECTRIC CABLE FROM CONDUIT	FOOT	4088					1580	2508
										* 89502375	REMOVE EXISTING TRAFFIC SIGNAL EQUIPMENT	EACH	2			1		1	
										* 89502380	REMOVE EXISTING HANDHOLE	EACH	11			11			
	* SPECIALTY ITEMS																		

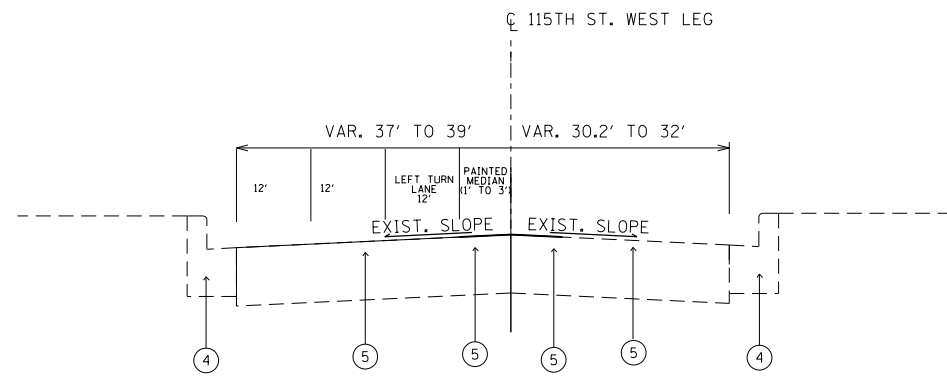
SUMMARY OF QUANTITIES				CONSTRUCTION TYPE CODE						SUMMARY OF QUANTITIES				CONSTRUCTION TYPE CODE					
CODE NO	ITEM	UNIT	TOTAL QUANTITIES	90% FED 10% STATE ROADWAY 115TH ST 0005	100% STATE 0005	90% FED 10% STATE TRAFFIC SIGNALS 115TH ST 0021	100% VILLAGE OF ALSIP 115TH ST EVP 0021	80% FED 20% STATE TRAFFIC SIGNALS 122ND ST 0021	90% FED 10% STATE INTERCONNECT SIGNALS 0021	CODE NO	ITEM	UNIT	TOTAL QUANTITIES	90% FED 10% STATE ROADWAY 115TH ST 0005	100% STATE 0005	90% FED 10% STATE TRAFFIC SIGNALS 115TH ST 0021	100% VILLAGE OF ALSIP 115TH ST EVP 0021	80% FED 20% STATE TRAFFIC SIGNALS 122ND ST 0021	90% FED 10% STATE INTERCONNECT SIGNALS 0021
* 89502382	REMOVE EXISTING DOUBLE HANDHOLE	EACH	1			1				* X8620200	UNINTERRUPTABLE POWER SUPPLY, SPECIAL	EACH	1			1			
* 89502385	REMOVE EXISTING CONCRETE FOUNDATION	EACH	12			10		2		* X8710024	FIBER OPTIC CABLE IN CONDUIT, NO. 62.5/125, MM12F SM24F	FOOT	1277						1277
X0320050	CONSTRUCTION LAYOUT (SPECIAL)	L SUM	1	1						Z0004562	COMBINATION CONCRETE CURB AND GUTTER REMOVAL AND REPLACEMENT	FOOT	350	350					
* X0324085	EMERGENCY VEHICLE PRIORITY SYSTEM LINE SENSOR CABLE, NO. 20 3/C	FOOT	337				337			Z0018500	DRAINAGE STRUCTURES TO BE CLEANED	EACH	20		20				
* X0324599	ROD AND CLEAN EXISTING CONDUIT	FOOT	550					150	400	Z0018600	DRAINAGE STRUCTURES TO BE RECONSTRUCTED	EACH	5	5					
X0326862	STRUCTURES TO BE ADJUSTED	EACH	7	7						Z0030850	TEMPORARY INFORMATION SIGNING	SO FT	52	52					
X0327980	PAVEMENT MARKING REMOVAL - WATER BLASTING	SO FT	2474	2474						* Z0033046	RE-OPTIMIZE TRAFFIC SIGNAL SYSTEM LEVEL 2	EACH	1						1
* X1400081	FULL-ACTUATED CONTROLLER AND TYPE SUPER P CABINET (SPECIAL)	EACH	1			1				* Z0073510	TEMPORARY TRAFFIC SIGNAL TIMING	EACH	1			1			
* X1400150	SERVICE INSTALLATION, GROUND MOUNTED, METERED	EACH	1			1													
* X1400201	RADAR VEHICLE DETECTION SYSTEM, SINGLE APPROACH, STOP BAR	EACH	2			2													
X5537800	STORM SEWERS TO BE CLEANED 12"	FOOT	200		200														
X7030005	TEMPORARY PAVEMENT MARKING REMOVAL	SO FT	1357	1357															
	* SPECIALTY ITEMS																		



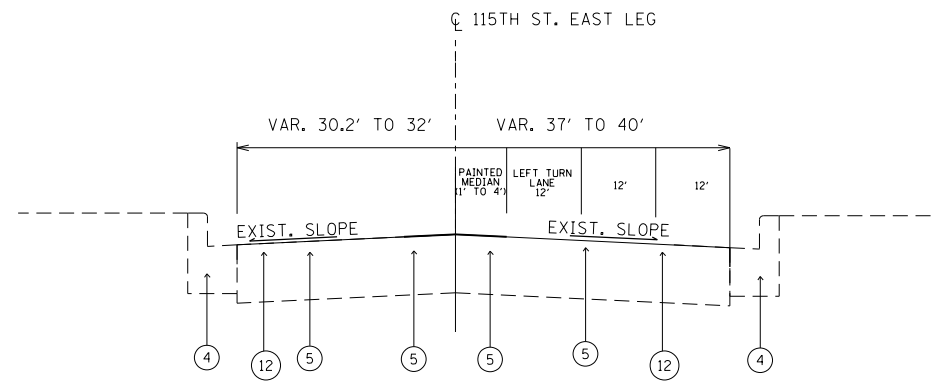
TYPICAL EXISTING CROSS SECTION - 115TH ST.
STA. 47+62 TO 50+00



TYPICAL EXISTING CROSS SECTION - 115TH ST.
STA. 50+00 TO 52+25



TYPICAL PROPOSED CROSS SECTION - 115TH ST.
STA. 47+62 TO 50+00



TYPICAL PROPOSED CROSS SECTION - 115TH ST.
STA. 50+00 TO 52+25

LEGEND

- ① EXISTING HOT-MIX ASPHALT SURFACE, 4"(±)
- ② EXISTING CONCRETE BASE COURSE, 10"(±)
- ③ EXISTING CORRUGATED CONCRETE MEDIAN
- ④ EXISTING COMBINATION CONCRETE CURB & GUTTER B-6.24
- ⑤ EXISTING PORTLAND CEMENT CONCRETE PAVEMENT, 10"
- ⑥ PROPOSED CURB REMOVAL
- ⑦ PROPOSED MEDIAN REMOVAL
- ⑧ PROPOSED HOT-MIX ASPHALT SURFACE COURSE, MIX "D", IL-9.5, N70 - 2"
- ⑨ PROPOSED HMA BASE COURSE, WIDENING - 12"
- ⑩ PROPOSED AGGREGATE SUBGRADE IMPROVEMENT, 12"
- ⑪ PROPOSED CLASS D PATCH (LOCATIONS TO BE DETERMINED BY THE RESIDENT ENGINEER)
- ⑫ PROPOSED CLASS B PATCH (LOCATIONS TO BE DETERMINED BY THE RESIDENT ENGINEER)
- ⑬ PROPOSED MEDIAN REMOVAL PARTIAL DEPTH (GRIND FLUSH WITH EXISTING LANE)

MODEL: Default
 FILE: h:\mhc\p\pub\harcourt\dot\Documents\DOT_Offices\Drawings\1\Projects\123618\CADD\Drawings\123618-shr-tyr-cal.dgn

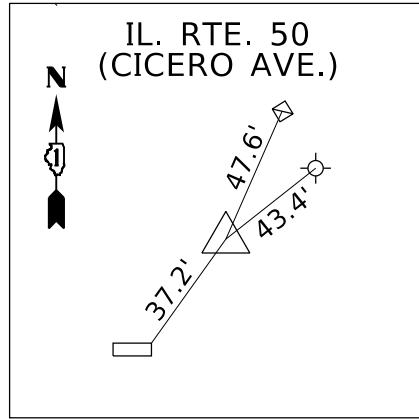
USER NAME = va@adolliv	DESIGNED -	REVISED -
	DRAWN -	REVISED -
PLOT SCALE = 100.0000' / in.	CHECKED -	REVISED -
PLOT DATE = 12/13/2019	DATE -	REVISED -

**STATE OF ILLINOIS
DEPARTMENT OF TRANSPORTATION**

**IL. ROUTE 50 (CICERO AVE.) AT 115TH ST.
TYPICAL SECTIONS**

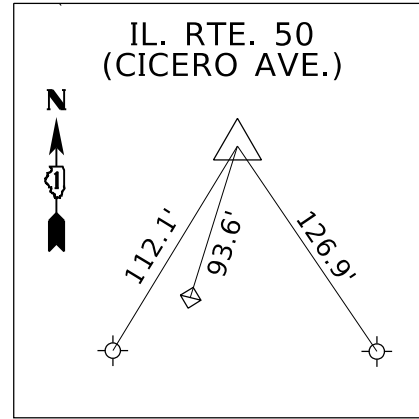
SCALE: SHEET OF SHEETS STA. TO STA.

F.A.P. RTE.	SECTION	COUNTY	TOTAL SHEETS	SHEET NO.
035	3068-N	COOK	42	9
CONTRACT NO. 62G01				
ILLINOIS		FED. AID PROJECT		



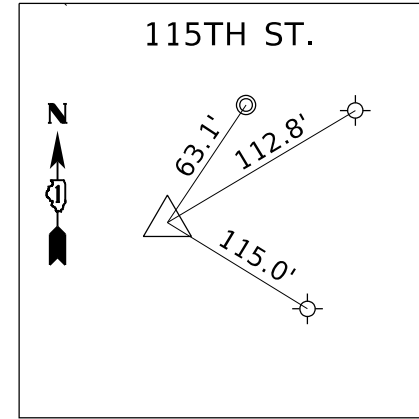
POINT 18

MAG NAIL POC
 IL RTE. 50 (SOUTH)
 STA. 9+73.13, ON C
 N=1826998.8058
 E=1146553.5783
 ELEV.=610.3104



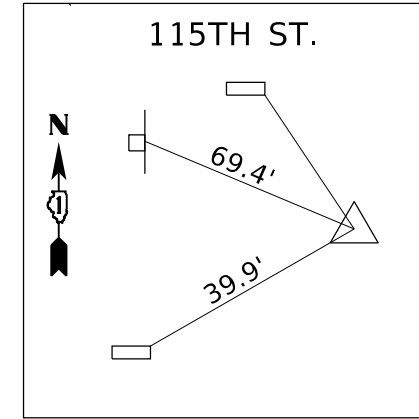
POINT 22

MAG NAIL POT
 IL. RTE. 50 (NORTH)
 STA. 26+70.90, ON C
 N=1827979.7982
 E=1146448.3757
 ELEV.=595.1968



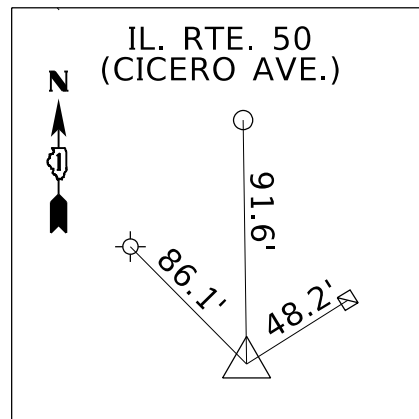
POINT 49

MAG NAIL POT
 115TH ST. (WEST)
 STA. 44+80.08, ON C
 N=1827850.3575
 E=1145953.8768
 ELEV.=595.5289



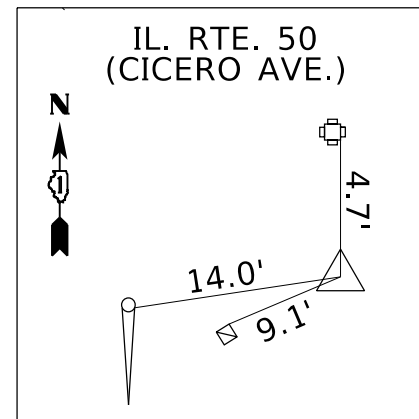
POINT 51

MAG NAIL POT
 115TH ST. (EAST)
 STA. 55+13.60, ON C
 N=1827883.1083
 E=1146986.8832
 ELEV.=595.4429



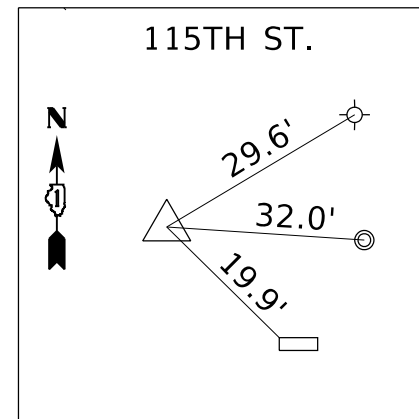
CONTROL POINT 1

MAG NAIL IN MEDIAN
 IL RTE. 50
 STA. 16+55.43, 0.4777 L
 N=1827522.4893
 E=1146485.9845
 ELEV.=597.4643



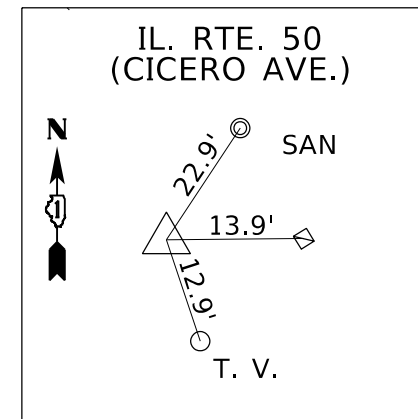
CONTROL POINT 2

MAG NAIL IN N.W. CORNER
 115TH ST. & IL. RTE. 50
 STA. 20+54.69, 46.6362 L
 N=1827919.7404
 E=1146424.8838
 ELEV.=594.8314



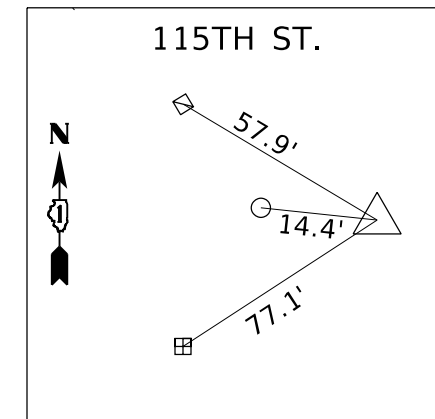
CONTROL POINT 3

"X" CUT IN CONC. ENT.
 115TH ST. (WEST)
 STA. 47+98.22, 42.2728 L
 N=1827902.6984
 E=1146270.4695
 ELEV.=594.5148



CONTROL POINT 4

MAG NAIL IN P. LOT
 IL. RTE. 50 (NORTH)
 STA. 23+09.19, 55.8737 L
 N=1828173.7206
 E=1146406.1076
 ELEV.=595.1040



CONTROL POINT 5

MAG NAIL IN MEDIAN
 115TH ST. (SOUTH)
 STA. 53+41.18, 1.5092 L
 N=1827876.1719
 E=1146814.5009
 ELEV.=594.9423

MODEL: Default
 FILE: Mainfile: p:\pub\barcom.dwg
 PROJECT: 123618\CADD\Drawings\DOT - Offices\Drawings\123618-218-218-218.dwg

USER NAME = va@adolliv	DESIGNED -	REVISED -
	DRAWN -	REVISED -
PLOT SCALE = 200.0000' / in.	CHECKED -	REVISED -
PLOT DATE = 12/13/2019	DATE -	REVISED -

STATE OF ILLINOIS
 DEPARTMENT OF TRANSPORTATION

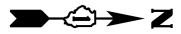
ALIGNMENTS, TIES AND BENCHMARKS			
IL RTE. 50 (CICERO AVE.) AT 115TH ST.			
SCALE: 1"= 100'	SHEET	OF SHEETS	STA. TO STA.

F.A.P. RTE.	SECTION	COUNTY	TOTAL SHEETS	SHEET NO.
350	3068-N	COOK		
CONTRACT NO. 62G01				
ILLINOIS FED. AID PROJECT				

REMOVAL AND RELOCATION NOTES:

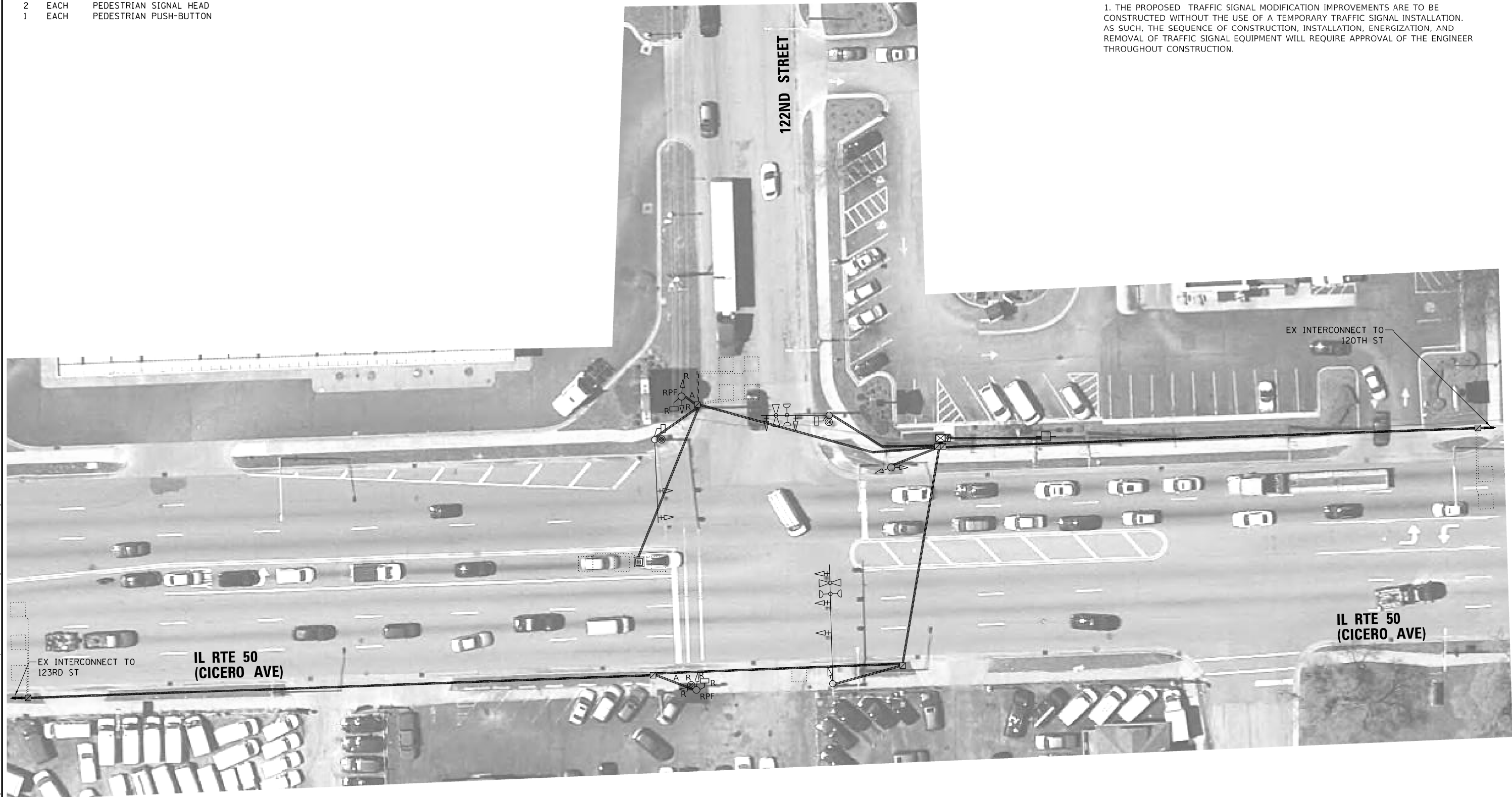
THE FOLLOWING ITEMS SHALL BE REMOVED BY THE CONTRACTOR AND SHALL BE DISPOSED OF BY THEM OUTSIDE THE RIGHT-OF-WAY AT THEIR EXPENSE. THE SALVAGE VALUE OF THE REMOVED EQUIPMENT SHALL BE REFLECTED IN THE CONTRACT BID PRICE.

- 2 EACH TRAFFIC SIGNAL POST
- 4 EACH 3-SECTION SIGNAL HEAD
- 2 EACH PEDESTRIAN SIGNAL HEAD
- 1 EACH PEDESTRIAN PUSH-BUTTON



NOTES:

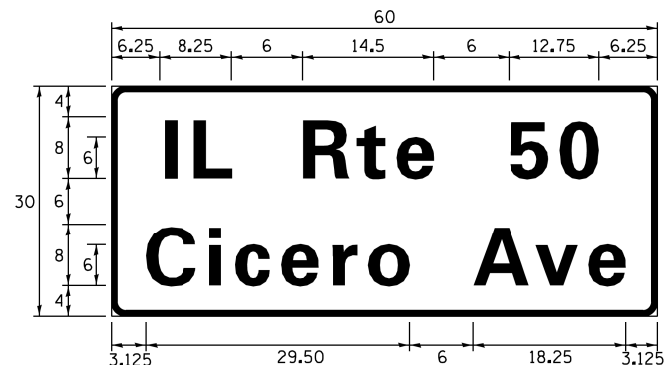
1. THE PROPOSED TRAFFIC SIGNAL MODIFICATION IMPROVEMENTS ARE TO BE CONSTRUCTED WITHOUT THE USE OF A TEMPORARY TRAFFIC SIGNAL INSTALLATION. AS SUCH, THE SEQUENCE OF CONSTRUCTION, INSTALLATION, ENERGIZATION, AND REMOVAL OF TRAFFIC SIGNAL EQUIPMENT WILL REQUIRE APPROVAL OF THE ENGINEER THROUGHOUT CONSTRUCTION.



MODEL: P:\BIDDING\VALUES
 FILE: 122nd_120th_123rd_124th_125th_126th_127th_128th_129th_130th_131st_132nd_133rd_134th_135th_136th_137th_138th_139th_140th_141st_142nd_143rd_144th_145th_146th_147th_148th_149th_150th_151st_152nd_153rd_154th_155th_156th_157th_158th_159th_160th_161st_162nd_163rd_164th_165th_166th_167th_168th_169th_170th_171st_172nd_173rd_174th_175th_176th_177th_178th_179th_180th_181st_182nd_183rd_184th_185th_186th_187th_188th_189th_190th_191st_192nd_193rd_194th_195th_196th_197th_198th_199th_200th_201st_202nd_203rd_204th_205th_206th_207th_208th_209th_210th_211st_212nd_213rd_214th_215th_216th_217th_218th_219th_220th_221st_222nd_223rd_224th_225th_226th_227th_228th_229th_230th_231st_232nd_233rd_234th_235th_236th_237th_238th_239th_240th_241st_242nd_243rd_244th_245th_246th_247th_248th_249th_250th_251st_252nd_253rd_254th_255th_256th_257th_258th_259th_260th_261st_262nd_263rd_264th_265th_266th_267th_268th_269th_270th_271st_272nd_273rd_274th_275th_276th_277th_278th_279th_280th_281st_282nd_283rd_284th_285th_286th_287th_288th_289th_290th_291st_292nd_293rd_294th_295th_296th_297th_298th_299th_300th_301st_302nd_303rd_304th_305th_306th_307th_308th_309th_310th_311st_312nd_313rd_314th_315th_316th_317th_318th_319th_320th_321st_322nd_323rd_324th_325th_326th_327th_328th_329th_330th_331st_332nd_333rd_334th_335th_336th_337th_338th_339th_340th_341st_342nd_343rd_344th_345th_346th_347th_348th_349th_350th_351st_352nd_353rd_354th_355th_356th_357th_358th_359th_360th_361st_362nd_363rd_364th_365th_366th_367th_368th_369th_370th_371st_372nd_373rd_374th_375th_376th_377th_378th_379th_380th_381st_382nd_383rd_384th_385th_386th_387th_388th_389th_390th_391st_392nd_393rd_394th_395th_396th_397th_398th_399th_400th_401st_402nd_403rd_404th_405th_406th_407th_408th_409th_410th_411st_412nd_413rd_414th_415th_416th_417th_418th_419th_420th_421st_422nd_423rd_424th_425th_426th_427th_428th_429th_430th_431st_432nd_433rd_434th_435th_436th_437th_438th_439th_440th_441st_442nd_443rd_444th_445th_446th_447th_448th_449th_450th_451st_452nd_453rd_454th_455th_456th_457th_458th_459th_460th_461st_462nd_463rd_464th_465th_466th_467th_468th_469th_470th_471st_472nd_473rd_474th_475th_476th_477th_478th_479th_480th_481st_482nd_483rd_484th_485th_486th_487th_488th_489th_490th_491st_492nd_493rd_494th_495th_496th_497th_498th_499th_500th_501st_502nd_503rd_504th_505th_506th_507th_508th_509th_510th_511st_512nd_513rd_514th_515th_516th_517th_518th_519th_520th_521st_522nd_523rd_524th_525th_526th_527th_528th_529th_530th_531st_532nd_533rd_534th_535th_536th_537th_538th_539th_540th_541st_542nd_543rd_544th_545th_546th_547th_548th_549th_550th_551st_552nd_553rd_554th_555th_556th_557th_558th_559th_560th_561st_562nd_563rd_564th_565th_566th_567th_568th_569th_570th_571st_572nd_573rd_574th_575th_576th_577th_578th_579th_580th_581st_582nd_583rd_584th_585th_586th_587th_588th_589th_590th_591st_592nd_593rd_594th_595th_596th_597th_598th_599th_600th_601st_602nd_603rd_604th_605th_606th_607th_608th_609th_610th_611st_612nd_613rd_614th_615th_616th_617th_618th_619th_620th_621st_622nd_623rd_624th_625th_626th_627th_628th_629th_630th_631st_632nd_633rd_634th_635th_636th_637th_638th_639th_640th_641st_642nd_643rd_644th_645th_646th_647th_648th_649th_650th_651st_652nd_653rd_654th_655th_656th_657th_658th_659th_660th_661st_662nd_663rd_664th_665th_666th_667th_668th_669th_670th_671st_672nd_673rd_674th_675th_676th_677th_678th_679th_680th_681st_682nd_683rd_684th_685th_686th_687th_688th_689th_690th_691st_692nd_693rd_694th_695th_696th_697th_698th_699th_700th_701st_702nd_703rd_704th_705th_706th_707th_708th_709th_710th_711st_712nd_713rd_714th_715th_716th_717th_718th_719th_720th_721st_722nd_723rd_724th_725th_726th_727th_728th_729th_730th_731st_732nd_733rd_734th_735th_736th_737th_738th_739th_740th_741st_742nd_743rd_744th_745th_746th_747th_748th_749th_750th_751st_752nd_753rd_754th_755th_756th_757th_758th_759th_760th_761st_762nd_763rd_764th_765th_766th_767th_768th_769th_770th_771st_772nd_773rd_774th_775th_776th_777th_778th_779th_780th_781st_782nd_783rd_784th_785th_786th_787th_788th_789th_790th_791st_792nd_793rd_794th_795th_796th_797th_798th_799th_800th_801st_802nd_803rd_804th_805th_806th_807th_808th_809th_810th_811st_812nd_813rd_814th_815th_816th_817th_818th_819th_820th_821st_822nd_823rd_824th_825th_826th_827th_828th_829th_830th_831st_832nd_833rd_834th_835th_836th_837th_838th_839th_840th_841st_842nd_843rd_844th_845th_846th_847th_848th_849th_850th_851st_852nd_853rd_854th_855th_856th_857th_858th_859th_860th_861st_862nd_863rd_864th_865th_866th_867th_868th_869th_870th_871st_872nd_873rd_874th_875th_876th_877th_878th_879th_880th_881st_882nd_883rd_884th_885th_886th_887th_888th_889th_890th_891st_892nd_893rd_894th_895th_896th_897th_898th_899th_900th_901st_902nd_903rd_904th_905th_906th_907th_908th_909th_910th_911st_912nd_913rd_914th_915th_916th_917th_918th_919th_920th_921st_922nd_923rd_924th_925th_926th_927th_928th_929th_930th_931st_932nd_933rd_934th_935th_936th_937th_938th_939th_940th_941st_942nd_943rd_944th_945th_946th_947th_948th_949th_950th_951st_952nd_953rd_954th_955th_956th_957th_958th_959th_960th_961st_962nd_963rd_964th_965th_966th_967th_968th_969th_970th_971st_972nd_973rd_974th_975th_976th_977th_978th_979th_980th_981st_982nd_983rd_984th_985th_986th_987th_988th_989th_990th_991st_992nd_993rd_994th_995th_996th_997th_998th_999th_1000th_1001st_1002nd_1003rd_1004th_1005th_1006th_1007th_1008th_1009th_1010th_1011st_1012nd_1013rd_1014th_1015th_1016th_1017th_1018th_1019th_1020th_1021st_1022nd_1023rd_1024th_1025th_1026th_1027th_1028th_1029th_1030th_1031st_1032nd_1033rd_1034th_1035th_1036th_1037th_1038th_1039th_1040th_1041st_1042nd_1043rd_1044th_1045th_1046th_1047th_1048th_1049th_1050th_1051st_1052nd_1053rd_1054th_1055th_1056th_1057th_1058th_1059th_1060th_1061st_1062nd_1063rd_1064th_1065th_1066th_1067th_1068th_1069th_1070th_1071st_1072nd_1073rd_1074th_1075th_1076th_1077th_1078th_1079th_1080th_1081st_1082nd_1083rd_1084th_1085th_1086th_1087th_1088th_1089th_1090th_1091st_1092nd_1093rd_1094th_1095th_1096th_1097th_1098th_1099th_1100th_1101st_1102nd_1103rd_1104th_1105th_1106th_1107th_1108th_1109th_1110th_1111st_1112nd_1113rd_1114th_1115th_1116th_1117th_1118th_1119th_1120th_1121st_1122nd_1123rd_1124th_1125th_1126th_1127th_1128th_1129th_1130th_1131st_1132nd_1133rd_1134th_1135th_1136th_1137th_1138th_1139th_1140th_1141st_1142nd_1143rd_1144th_1145th_1146th_1147th_1148th_1149th_1150th_1151st_1152nd_1153rd_1154th_1155th_1156th_1157th_1158th_1159th_1160th_1161st_1162nd_1163rd_1164th_1165th_1166th_1167th_1168th_1169th_1170th_1171st_1172nd_1173rd_1174th_1175th_1176th_1177th_1178th_1179th_1180th_1181st_1182nd_1183rd_1184th_1185th_1186th_1187th_1188th_1189th_1190th_1191st_1192nd_1193rd_1194th_1195th_1196th_1197th_1198th_1199th_1200th_1201st_1202nd_1203rd_1204th_1205th_1206th_1207th_1208th_1209th_1210th_1211st_1212nd_1213rd_1214th_1215th_1216th_1217th_1218th_1219th_1220th_1221st_1222nd_1223rd_1224th_1225th_1226th_1227th_1228th_1229th_1230th_1231st_1232nd_1233rd_1234th_1235th_1236th_1237th_1238th_1239th_1240th_1241st_1242nd_1243rd_1244th_1245th_1246th_1247th_1248th_1249th_1250th_1251st_1252nd_1253rd_1254th_1255th_1256th_1257th_1258th_1259th_1260th_1261st_1262nd_1263rd_1264th_1265th_1266th_1267th_1268th_1269th_1270th_1271st_1272nd_1273rd_1274th_1275th_1276th_1277th_1278th_1279th_1280th_1281st_1282nd_1283rd_1284th_1285th_1286th_1287th_1288th_1289th_1290th_1291st_1292nd_1293rd_1294th_1295th_1296th_1297th_1298th_1299th_1300th_1301st_1302nd_1303rd_1304th_1305th_1306th_1307th_1308th_1309th_1310th_1311st_1312nd_1313rd_1314th_1315th_1316th_1317th_1318th_1319th_1320th_1321st_1322nd_1323rd_1324th_1325th_1326th_1327th_1328th_1329th_1330th_1331st_1332nd_1333rd_1334th_1335th_1336th_1337th_1338th_1339th_1340th_1341st_1342nd_1343rd_1344th_1345th_1346th_1347th_1348th_1349th_1350th_1351st_1352nd_1353rd_1354th_1355th_1356th_1357th_1358th_1359th_1360th_1361st_1362nd_1363rd_1364th_1365th_1366th_1367th_1368th_1369th_1370th_1371st_1372nd_1373rd_1374th_1375th_1376th_1377th_1378th_1379th_1380th_1381st_1382nd_1383rd_1384th_1385th_1386th_1387th_1388th_1389th_1390th_1391st_1392nd_1393rd_1394th_1395th_1396th_1397th_1398th_1399th_1400th_1401st_1402nd_1403rd_1404th_1405th_1406th_1407th_1408th_1409th_1410th_1411st_1412nd_1413rd_1414th_1415th_1416th_1417th_1418th_1419th_1420th_1421st_1422nd_1423rd_1424th_1425th_1426th_1427th_1428th_1429th_1430th_1431st_1432nd_1433rd_1434th_1435th_1436th_1437th_1438th_1439th_1440th_1441st_1442nd_1443rd_1444th_1445th_1446th_1447th_1448th_1449th_1450th_1451st_1452nd_1453rd_1454th_1455th_1456th_1457th_1458th_1459th_1460th_1461st_1462nd_1463rd_1464th_1465th_1466th_1467th_1468th_1469th_1470th_1471st_1472nd_1473rd_1474th_1475th_1476th_1477th_1478th_1479th_1480th_1481st_1482nd_1483rd_1484th_1485th_1486th_1487th_1488th_1489th_1490th_1491st_1492nd_1493rd_1494th_1495th_1496th_1497th_1498th_1499th_1500th_1501st_1502nd_1503rd_1504th_1505th_1506th_1507th_1508th_1509th_1510th_1511st_1512nd_1513rd_1514th_1515th_1516th_1517th_1518th_1519th_1520th_1521st_1522nd_1523rd_1524th_1525th_1526th_1527th_1528th_1529th_1530th_1531st_1532nd_1533rd_1534th_1535th_1536th_1537th_1538th_1539th_1540th_1541st_1542nd_1543rd_1544th_1545th_1546th_1547th_1548th_1549th_1550th_1551st_1552nd_1553rd_1554th_1555th_1556th_1557th_1558th_1559th_1560th_1561st_1562nd_1563rd_1564th_1565th_1566th_1567th_1568th_1569th_1570th_1571st_1572nd_1573rd_1574th_1575th_1576th_1577th_1578th_1579th_1580th_1581st_1582nd_1583rd_1584th_1585th_1586th_1587th_1588th_1589th_1590th_1591st_1592nd_1593rd_1594th_1595th_1596th_1597th_1598th_1599th_1600th_1601st_1602nd_1603rd_1604th_1605th_1606th_1607th_1608th_1609th_1610th_1611st_1612nd_1613rd_1614th_1615th_1616th_1617th_1618th_1619th_1620th_1621st_1622nd_1623rd_1624th_1625th_1626th_1627th_1628th_1629th_1630th_1631st_1632nd_1633rd_1634th_1635th_1636th_1637th_1638th_1639th_1640th_1641st_1642nd_1643rd_1644th_1645th_1646th_1647th_1648th_1649th_1650th_1651st_1652nd_1653rd_1654th_1655th_1656th_1657th_1658th_1659th_1660th_1661st_1662nd_1663rd_1664th_1665th_1666th_1667th_1668th_1669th_1670th_1671st_1672nd_1673rd_1674th_1675th_1676th_1677th_1678th_1679th_1680th_1681st_1682nd_1683rd_1684th_1685th_1686th_1687th_1688th_1689th_1690th_1691st_1692nd_1693rd_1694th_1695th_1696th_1697th_1698th_1699th_1700th_1701st_1702nd_1703rd_1704th_1705th_1706th_1707th_1708th_1709th_1710th_1711st_1712nd_1713rd_1714th_1715th_1716th_1717th_1718th_1719th_1720th_1721st_1722nd_1723rd_1724th_1725th_1726th_1727th_1728th_1729th_1730th_1731st_1732nd_1733rd_1734th_1735th_1736th_1737th_1738th_1739th_1740th_1741st_1742nd_1743rd_1744th_1745th_1746th_1747th_1748th_1749th_1750th_1751st_1752nd_1753rd_1754th_1755th_1756th_1757th_1758th_1759th_1760th_1761st_1762nd_1763rd_1764th_1765th_1766th_1767th_1768th_1769th_1770th_1771st_1772nd_1773rd_1774th_1775th_1776th_1777th_1778th_1779th_1780th_1781st_1782nd_1783rd_1784th_1785th_1786th_1787th_1788th_1789th_1790th_1791st_1792nd_1793rd_1794th_1795th_1796th_1797th_1798th_1799th_1800th_1801st_1802nd_1803rd_1804th_1805th_1806th_1807th_1808th_1809th_1810th_1811st_1812nd_1813rd_1814th_1815th_1816th_1817th_1818th_1819th_1820th_1821st_1822nd_1823rd_1824th_1825th_1826th_1827th_1828th_1829th_1830th_1831st_1832nd_1833rd_1834th_1835th_1836th_1837th_1838th_1839th_1840th_1841st_1842nd_1843rd_1844th_1845th_1846th_1847th_1848th_1849th_1850th_1851st_1852nd_1853rd_1854th_1855th_1856th_1857th_1858th_1859th_1860th_1861st_1862nd_1863rd_1864th_1865th_1866th_1867th_1868th_1869th_1870th_1871st_1872nd_1873rd_1874th_1875th_1876th_1877th_1878th_1879th_1880th_1881st_1882nd_1883rd_1884th_1885th_1886th_1887th_1888th_1889th_1890th_1891st_1892nd_1893rd_1894th_1895th_1896th_1897th_1898th_1899th_1900th_1901st_1902nd_1903rd_1904th_1905th_1906th_1907th_1908th_1909th_1910th_1911st_1912nd_1913rd_1914th_1915th_1916th_1917th_1918th_1919th_1920th_1921st_1922nd_1923rd_1924th_1925th_1926th_1927th_1928th_1929th_1930th_1931st_1932nd_1933rd_1934th_1935th_1936th_1937th_1938th_1939th_1940th_1941st_1942nd_1943rd_1944th_1945th_1946th_1947th_1948th_1949th_1950th_1951st_1952nd_1953rd_1954th_1955th_1956th_1957th_1958th_1959th_1960th_1961st_1962nd_1963rd_1964th_1965th_1966th_1967th_1968th_1969th_1970th_1971st_1972nd_1973rd_1974th_1975th_1976th_1977th_1978th_1979th_1980th_1981st_1982nd_1983rd_1984th_1985th_1986th_1987th_1988th_1989th_1990th_1991st_1992nd_1993rd_1994th_1995th_1996th_1997th_1998th_1999th_2000th_2001st_2002nd_2003rd_2004th_2005th_2006th_2007th_2008th_2009th_2010th_2011st_2012nd_2013rd_2014th_2015th_2016th_2017th_2018th_2019th_2020th_2021st_2022nd_2023rd_2024th_2025th_2026th_2027th_2028th_2029th_2030th_2031st_2032nd_2033rd_2034th_2035th_2036th_2037th_2038th_2039th_2040th_2041st_2042nd_2043rd_2044th_2045th_2046th_2047th_2048th_2049th_2050th_2051st_2052nd_2053rd_2054th_2055th_2056th_2057th_2058th_2059th_2060th_2061st_2062nd_2063rd_2064th_2065th_2066th_2067th_2068th_2069th_2070th_2071st_2072nd_2073rd_2074th_2075th_2076th_2077th_2078th_2079th_2080th_2081st_2082nd_2083rd_2084th_2085th_2086th_2087th_2088th_2089th_2090th_2091st_2092nd_2093rd_2094th_2095th_2096th_2097th_2098th_2099th_2100th_2101st_2102nd_2103rd_2104th_2105th_2106th_2107th_2108th_2109th_2110th_2111st_2112nd_2113rd_2114th_2115th_2116th_2117th_2118th_2119th_2120th_2121st_2122nd_2123rd_2124th_2125th_2126th_2127th_2128th_2129th_2130th_2131st_2132nd_2133rd_2134th_2135th_2136th_2137th_2138th_2139th_2140th_2141st_2142nd_2143rd_2144th_2145th_2146th_2147th_2148th_2149th_2150th_2151st_2152nd_2153rd_2154th_2155th_2156th_2157th_2158th_2159th_2160th_2161st_2162nd_2163rd_2164th_2165th_2166th_2167th_2168th_2169th_2170th_2171st_2172nd_2173rd_2174th_2175th_2176th_2177th_2178th_2179th_2180th_2181st_2182nd_2183rd_2184th_2185th_2186th_2187th_2188th_2189th_2190th_2191st_2192nd_2193rd_2194th_2195th_2196th_2197th_2198th_2199th_2200th_2201st_2202nd_2203rd_2204th_2205th_2206th_2207th_2208th_2209th_2210th_2211st_2212nd_2213rd_2214th_2215th_2216th_2217th_2218th_221

SIGN PANEL – TYPE 1 OR TYPE 2

ALL DIMENSIONS ARE IN INCHES UNLESS NOTED OTHERWISE



DESIGN SERIES	AREA (SQ FT)	SIGN PANEL TYPE	SHEETING TYPE	QTY. REQUIRED
D	12.50	2	ZZ	1

NOTE: FOR ADDITIONAL DESIGN AND INSTALLATION INFORMATION PLEASE SEE DISTRICT ONE MAST ARM MOUNTED STREET NAME SIGNS DETAIL.

SCHEDULE OF QUANTITIES

ITEM DESCRIPTION	UNITS	TOTAL QTY.
SIGN PANEL - TYPE 2	SQ FT	12.5
UNDERGROUND CONDUIT, GALVANIZED STEEL, 3" DIA.	FOOT	20
UNDERGROUND CONDUIT, GALVANIZED STEEL, 4" DIA.	FOOT	195
MAINTENANCE OF EXISTING TRAFFIC SIGNAL INSTALLATION	EACH	1
ELECTRIC CABLE IN CONDUIT, SIGNAL NO. 14 2C	FOOT	263
ELECTRIC CABLE IN CONDUIT, SIGNAL NO. 14 3C	FOOT	419
ELECTRIC CABLE IN CONDUIT, SIGNAL NO. 14 5C	FOOT	977
ELECTRIC CABLE IN CONDUIT, SIGNAL NO. 14 7C	FOOT	440
ELECTRIC CABLE IN CONDUIT, EQUIPMENT GROUNDING CONDUCTOR, NO. 6 1C	FOOT	260
TRAFFIC SIGNAL POST, GALVANIZED STEEL 16 FT.	EACH	1
STEEL MAST ARM ASSEMBLY AND POLE, 28 FT.	EACH	1
CONCRETE FOUNDATION, TYPE A	FOOT	4
CONCRETE FOUNDATION, TYPE E 30-INCH DIAMETER	FOOT	10
DRILL EXISTING HANDHOLE	EACH	6
SIGNAL HEAD, LED, 1-FACE, 3-SECTION, MAST-ARM MOUNTED	EACH	1
SIGNAL HEAD, LED, 1-FACE, 3-SECTION, BRACKET MOUNTED	EACH	3
SIGNAL HEAD, LED, 1-FACE, 5-SECTION, BRACKET MOUNTED	EACH	1
SIGNAL HEAD, LED, 1-FACE, 5-SECTION, MAST-ARM MOUNTED	EACH	1
PEDESTRIAN SIGNAL HEAD, LED, 1-FACE, BRACKET MOUNTED WITH COUNTDOWN TIMER	EACH	2
TRAFFIC SIGNAL BACKPLATE, LOUVERED, FORMED PLASTIC	EACH	2
PEDESTRIAN PUSH-BUTTON	EACH	1
MODIFY EXISTING CONTROLLER	EACH	1
MODIFY EXISTING CONTROLLER CABINET	EACH	1
REMOVE ELECTRIC CABLE FROM CONDUIT	FOOT	1,580
REMOVE EXISTING TRAFFIC SIGNAL EQUIPMENT	EACH	1
REMOVE EXISTING CONCRETE FOUNDATION	EACH	2
ROD AND CLEAN EXISTING CONDUIT	FOOT	150
RE-OPTIMIZE TRAFFIC SIGNAL SYSTEM LEVEL 2	EACH	1

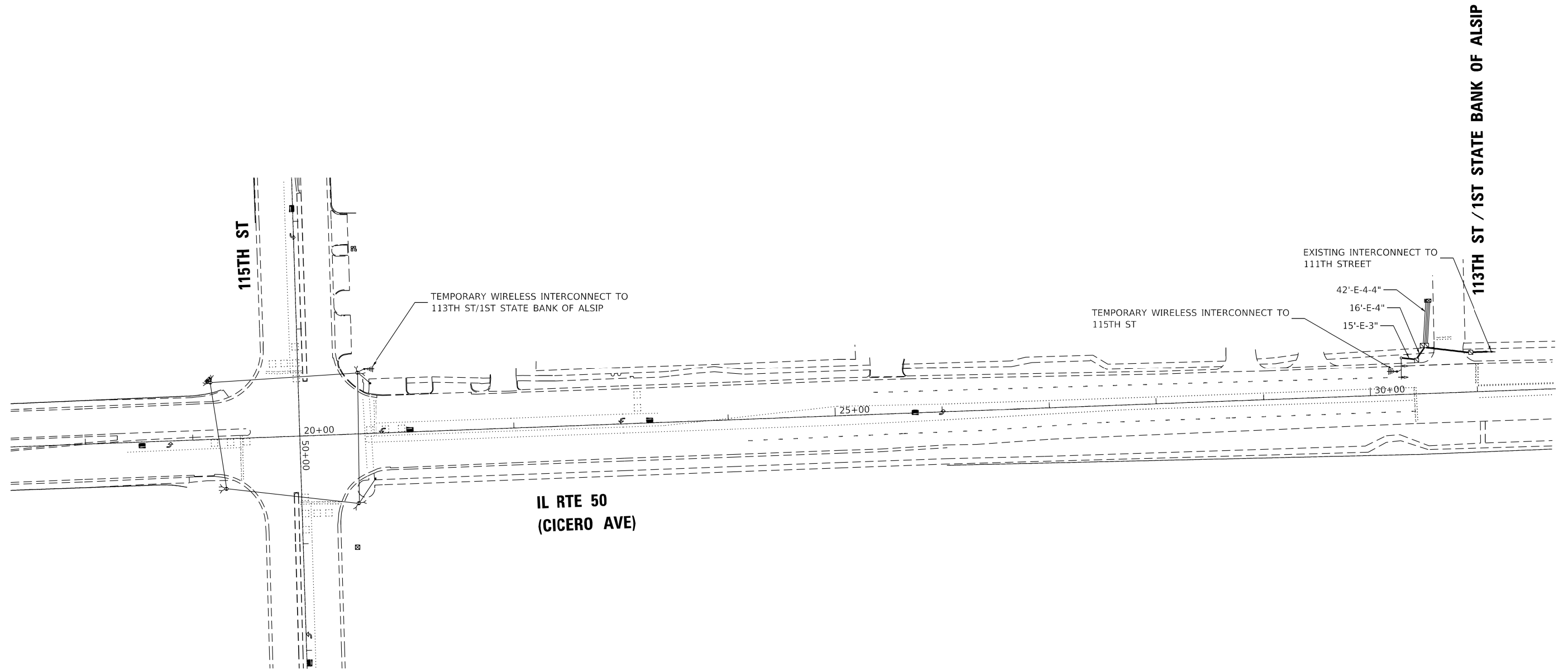
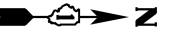
* NOMINAL QUANTITY TO BE USED AS NEEDED AND AS APPROVED BY THE ENGINEER

MODEL: P:\BIDDING\NAMES FILE: NAME: P:\BIDDING\NAMES\DOT Documents\DOT Office\District 1\Projects\123618\CADD\Design\123618-sh-detailed.dgn

USER NAME = quberridv	DESIGNED - RJ	REVISED -
	DRAWN - BD	REVISED -
PLOT SCALE = 1/8"=1'-0"	CHECKED - GG	REVISED -
PLOT DATE = 10/21/2019	DATE - 10/21/2019	REVISED -

MAST ARM MOUNTED STREET NAME SIGNS AND SCHEDULE OF QUANTITIES IL RTE 50 (CICERO AVE) AND 122ND ST			
SCALE: NONE	SHEET OF SHEETS	STA. TO STA.	

F.A.P. RTE. 350	SECTION 3068-N	COUNTY COOK	TOTAL SHEETS 42	SHEET NO. 23
CONTRACT NO. 62G01				
ILLINOIS FED. AID PROJECT				



MODEL: P:\MIDWEST\STATES
 FILE: NAME: P:\MIDWEST\STATES\DOT\Documents\DOT_Offices\Illinois\DOT\Projects\123618\CADD\Design\123618-sh-detailed.dgn

TranSmart | EJM
 411 South Wells Street Suite 1000
 Chicago, Illinois 60607

USER NAME = ejm	DESIGNED - RJ	REVISED -
DRAWN - BD	CHECKED - GG	REVISED -
PLOT SCALE = 1/8" = 1'-0"	DATE - 10/21/2019	REVISED -
PLOT DATE = 10/21/2019		

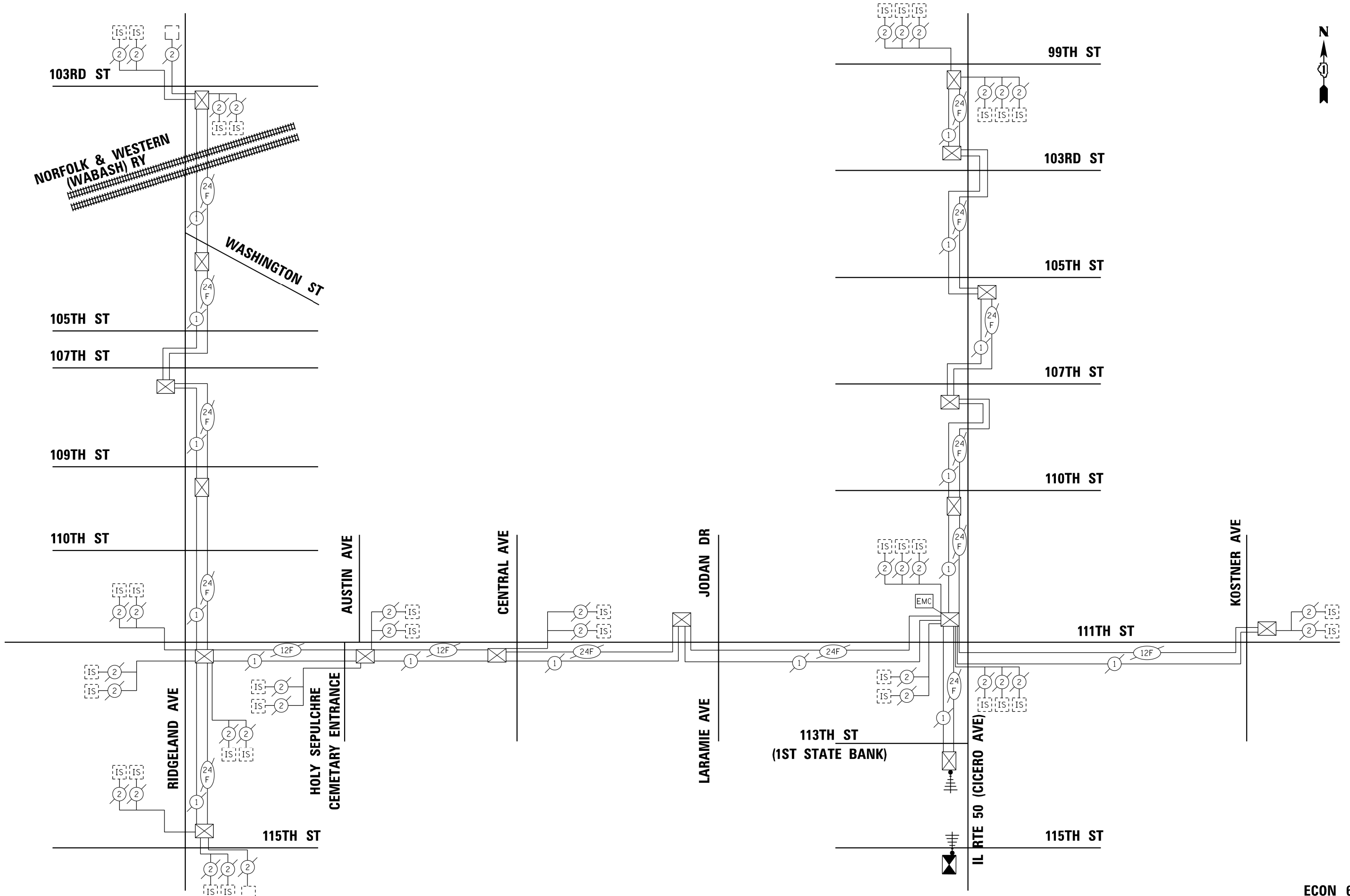
STATE OF ILLINOIS
 DEPARTMENT OF TRANSPORTATION

TEMPORARY INTERCONNECT PLAN
 IL RTE 50 (CICERO AVE)
 99TH ST TO 115TH ST

SCALE: SHEET OF SHEETS STA. TO STA.

F.A.P. RTE.	SECTION	COUNTY	TOTAL SHEETS	SHEET NO.
350	3068-N	COOK	42	24
CONTRACT NO. 62G01				
ILLINOIS FED. AID PROJECT				

ECON 63



MODEL: E:\BIDD\BIDD\NAMES
 FILE: NAME: PROJ\BIDD\BIDD\Documents\BIDD\Office\BIDD\detc_1\Project\ID:123618\CADD\BIDD\Design\123618_sht-detailed.dgn

TranSmart/EJM
 411 South Wells Street Suite 1000
 Chicago, Illinois 60607

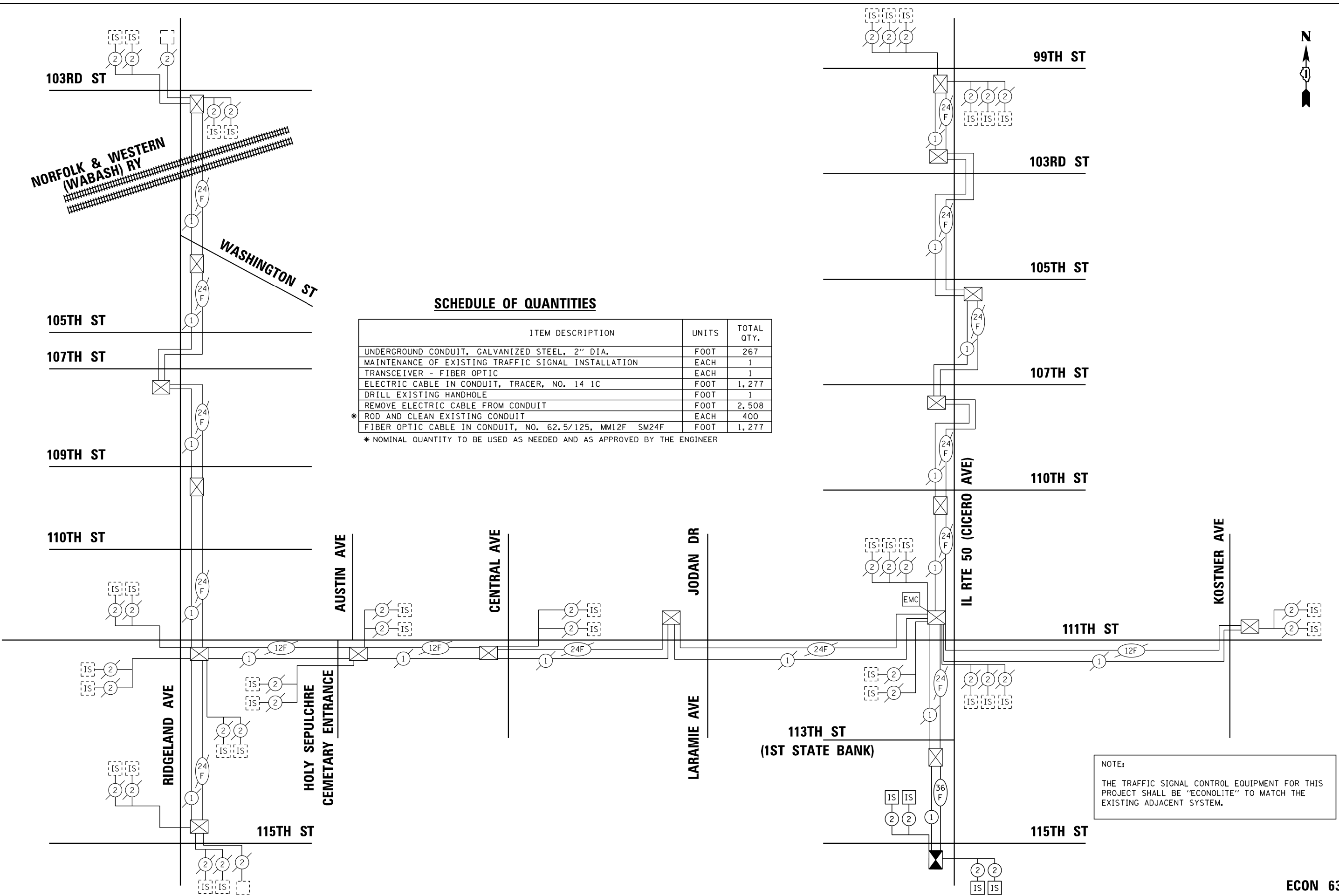
USER NAME = ejm	DESIGNED - RJ	REVISED -
DRAWN - BD	REVISIONS -	
PLOT SCALE = 1/8" = 1'-0"	CHECKED - GG	REVISED -
PLOT DATE = 10/21/2019	DATE - 10/21/2019	REVISED -

STATE OF ILLINOIS
 DEPARTMENT OF TRANSPORTATION

TEMPORARY INTERCONNECT SCHEMATIC
 IL RTE 50 (CICERO AVE)
 99TH ST TO 115TH ST

F.A.P. RTE.	SECTION	COUNTY	TOTAL SHEETS	SHEET NO.
350	3068-N	COOK	42	25
CONTRACT NO. 62G01				
ILLINOIS FED. AID PROJECT				

ECON 63



SCHEDULE OF QUANTITIES

ITEM DESCRIPTION	UNITS	TOTAL QTY.
UNDERGROUND CONDUIT, GALVANIZED STEEL, 2" DIA.	FOOT	267
MAINTENANCE OF EXISTING TRAFFIC SIGNAL INSTALLATION	EACH	1
TRANSCEIVER - FIBER OPTIC	EACH	1
ELECTRIC CABLE IN CONDUIT, TRACER, NO. 14 1C	FOOT	1,277
DRILL EXISTING HANDHOLE	FOOT	1
REMOVE ELECTRIC CABLE FROM CONDUIT	FOOT	2,508
* ROD AND CLEAN EXISTING CONDUIT	EACH	400
FIBER OPTIC CABLE IN CONDUIT, NO. 62.5/125, MM12F SM24F	FOOT	1,277

* NOMINAL QUANTITY TO BE USED AS NEEDED AND AS APPROVED BY THE ENGINEER

NOTE:
THE TRAFFIC SIGNAL CONTROL EQUIPMENT FOR THIS PROJECT SHALL BE "ECONOLITE" TO MATCH THE EXISTING ADJACENT SYSTEM.

MODEL: P:\BIDDING\NAMES
 FILE: NAME: P:\BIDDING\NAMES\DOT\Documents\DOT - Office\Drawings - 1\Projects\123618\CADD\Drawings\123618-sh-detailed.dwg

TranSmart/EJM
 411 South Wells Street Suite 1000
 Chicago, Illinois 60607

USER NAME = ejm	DESIGNED - RJ	REVISED -
	DRAWN - BD	REVISED -
PLOT SCALE = 1/8" = 1' / in.	CHECKED - GG	REVISED -
PLOT DATE = 10/21/2019	DATE - 10/21/2019	REVISED -

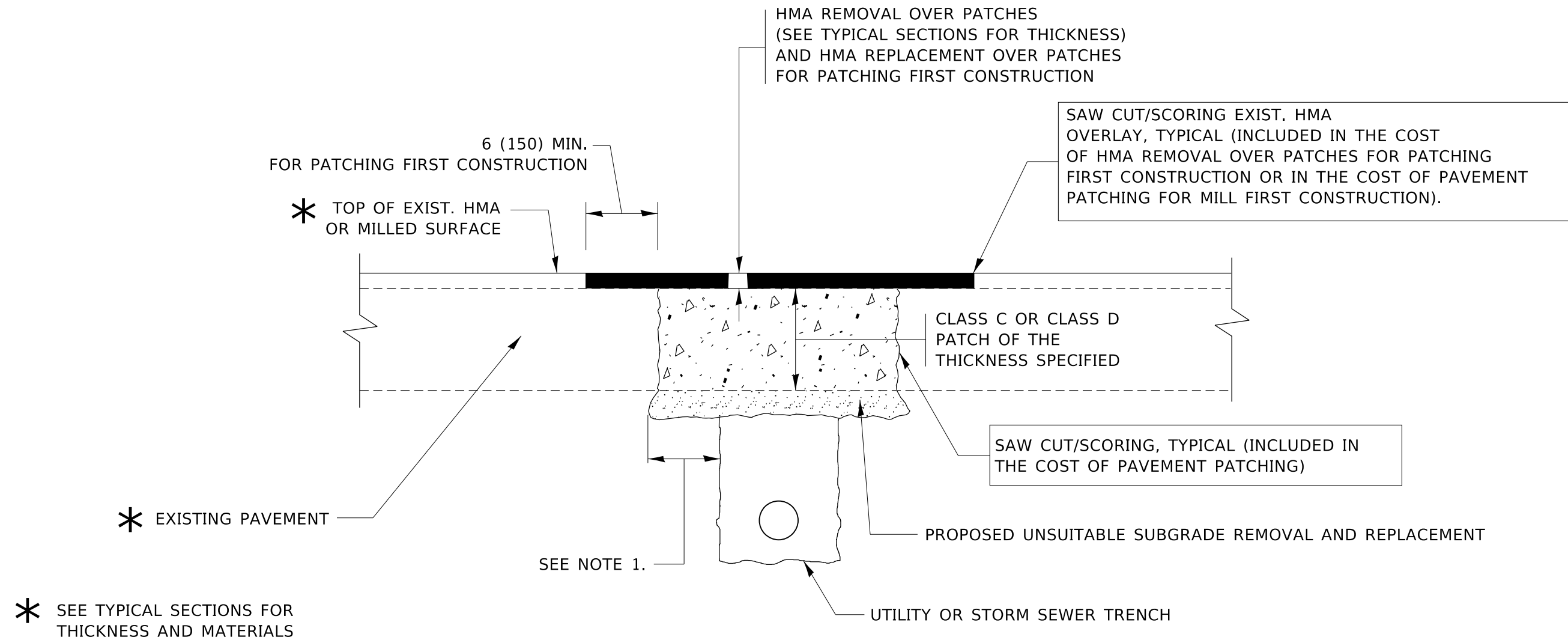
**STATE OF ILLINOIS
 DEPARTMENT OF TRANSPORTATION**

**PROPOSED INTERCONNECT SCHEMATIC AND SCHEDULE OF QUANTITIES
 IL RTE 50 (CICERO AVE)
 99TH ST TO 115TH ST**

SCALE: SHEET OF SHEETS STA. TO STA.

F.A.P. RTE.	SECTION	COUNTY	TOTAL SHEETS	SHEET NO.
350	3068-N	COOK	42	27
ILLINOIS FED. AID PROJECT			CONTRACT NO. 62G01	

ECON 63



NOTES:

1. THE WIDTH OF THE FULL DEPTH PATCH OVER A TRENCH SHALL BE 12 (300) WIDER ON EACH SIDE OF THE TRENCH.
2. FOR METHOD OF MEASUREMENT AND BASIS OF PAYMENT, SEE RECURRING SPECIAL PROVISION "PATCHING WITH HOT-MIX ASPHALT OVERLAY REMOVAL".

SEQUENCE OF CONSTRUCTION (PATCHING FIRST)

1. REMOVE THE EXISTING HMA MATERIAL OVER THE AREA TO BE PATCHED.
2. REMOVE AND REPLACE WITH CLASS C OR D PATCH.
3. REPLACE HMA MATERIAL OVER THE AREA TO BE PATCHED.

SEQUENCE OF CONSTRUCTION (MILLING FIRST)

1. MILL HMA FIRST IF THERE IS AT LEAST 4½ INCHES OR MORE OF HMA MATERIAL ON TOP OF THE EXISTING PAVEMENT OR IF THE PAVEMENT IS FULL DEPTH HMA. A MINIMUM OF 2 INCHES OF HMA MATERIAL SHALL BE IN PLACE AFTER MILLING.
2. REMOVE AND REPLACE WITH FULL DEPTH CLASS D PATCHES TO TOP OF MILLED SURFACE.

ALL DIMENSIONS ARE IN INCHES (MILLIMETERS) UNLESS OTHERWISE SHOWN.

MODEL: Default
FILE: hma12c_patchoverroom.dwg
PROJECT: R:\Projects\12361\B\CADD\Design\Design\12361.dwg

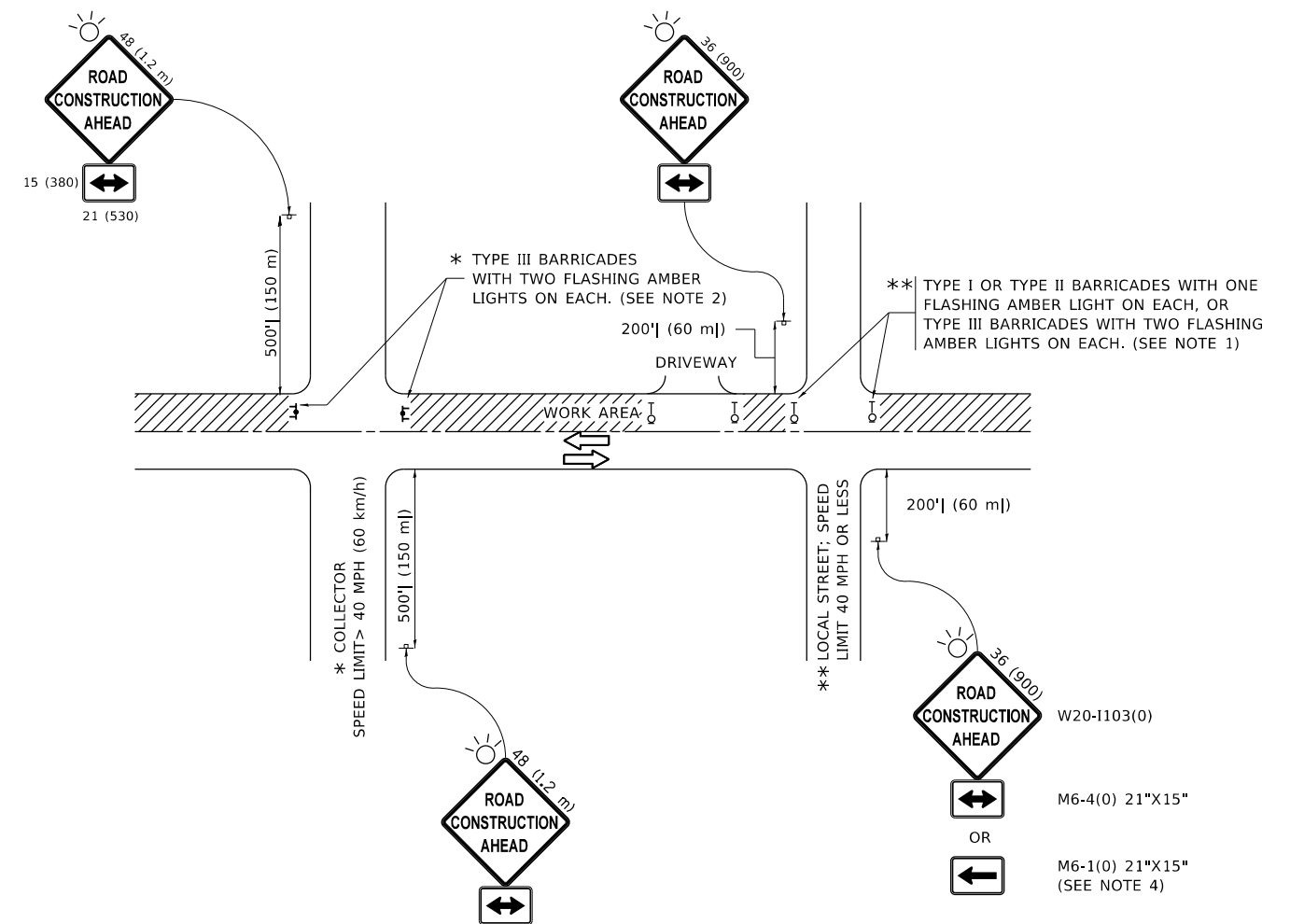
USER NAME = va@adolliv	DESIGNED - R. SHAH	REVISED - A. ABBAS 04-27-98
	DRAWN -	REVISED - R. BORO 01-01-07
PLOT SCALE = 100.0000' / in.	CHECKED -	REVISED - R. BORO 09-04-07
PLOT DATE = 12/13/2019	DATE - 10-25-94	REVISED - K. ENG 10-27-08

STATE OF ILLINOIS
DEPARTMENT OF TRANSPORTATION

PAVEMENT PATCHING FOR
HMA SURFACED PAVEMENT

SCALE: NONE SHEET 1 OF 1 SHEETS STA. TO STA.

F.A.P. RTE.	SECTION	COUNTY	TOTAL SHEETS	SHEET NO.
350	3068-N	COOK	42	28
BD400-04 (BD-22)			CONTRACT NO. 62G01	
ILLINOIS FED. AID PROJECT				



NOTES:

1. SIDE ROAD WITH A SPEED LIMIT OF 40 MPH (60 km/h) OR LESS AS SHOWN ON THE DRAWING AND AS DIRECTED BY THE ENGINEER:
 - a) ONE "ROAD CONSTRUCTION AHEAD" SIGN 36 x 36 (900x900) WITH A FLASHER MOUNTED ON IT APPROXIMATELY 200' (60 m) IN ADVANCE OF THE MAIN ROUTE.
 - b) THE CLOSED PORTION OF THE MAIN ROUTE SHALL BE PROTECTED BY BLOCKING WITH TYPE I, TYPE II OR TYPE III BARRICADES, 1/3 OF THE CROSS SECTION OF THE CLOSED PORTION.
2. SIDE ROAD WITH A SPEED LIMIT GREATER THAN 40 MPH (60 km/h) AS SHOWN ON THE DRAWING AND AS DIRECTED BY THE ENGINEER:
 - a) ONE "ROAD CONSTRUCTION AHEAD" SIGN 48 x 48 (1.2 m x 1.2 m) WITH A FLASHER MOUNTED ON IT APPROXIMATELY 500' (150 m) IN ADVANCE OF THE MAIN ROUTE.
 - b) BLOCKING WITH TYPE III BARRICADES, 1/2 OF THE CROSS SECTION OF THE CLOSED PORTION.
3. CONES MAY BE SUBSTITUTED FOR BARRICADES OR DRUMS AT HALF THE SPACING DURING DAY OPERATIONS. CONES SHALL BE A MINIMUM OF 28 (710) IN HEIGHT.
4. SIGNING AND THE WORK ZONE, A SINGLE HEADED ARROW (M6-1) SHALL BE USED IN LIEU OF THE DOUBLE HEADED ARROW (M6-4).
5. WHEN WORK IS BEING PERFORMED ON A SIDE ROAD OR DRIVEWAY, FOLLOW THE APPLICABLE STANDARD(S). THE DIRECTIONAL ARROW (M6-1 OR M6-4) SHALL BE COVERED OR REMOVED WHEN NO LONGER CONSISTENT WITH THE TRAFFIC CONTROL SET-UP.
6. ADVANCE WARNING SIGNS ARE TO BE OMITTED ON DRIVEWAYS UNLESS OTHERWISE SPECIFIED IN THE PLANS OR BY THE ENGINEER.
7. THE TRAFFIC CONTROL AND PROTECTION FOR SIDE ROADS, INTERSECTIONS, AND DRIVEWAYS SHALL BE INCLUDED IN THE COST OF SPECIFIED TRAFFIC CONTROL STANDARDS OR ITEMS.

All dimensions are in inches (millimeters) unless otherwise shown.

MODEL: Default
 FILE: \\nashville-prod\planroom\ada\illinois.gov\PWIDOT\Documents\DOT_Offices\Director_1\Projects\123618\CADD\Drawings\Design\DRS\4.dgn

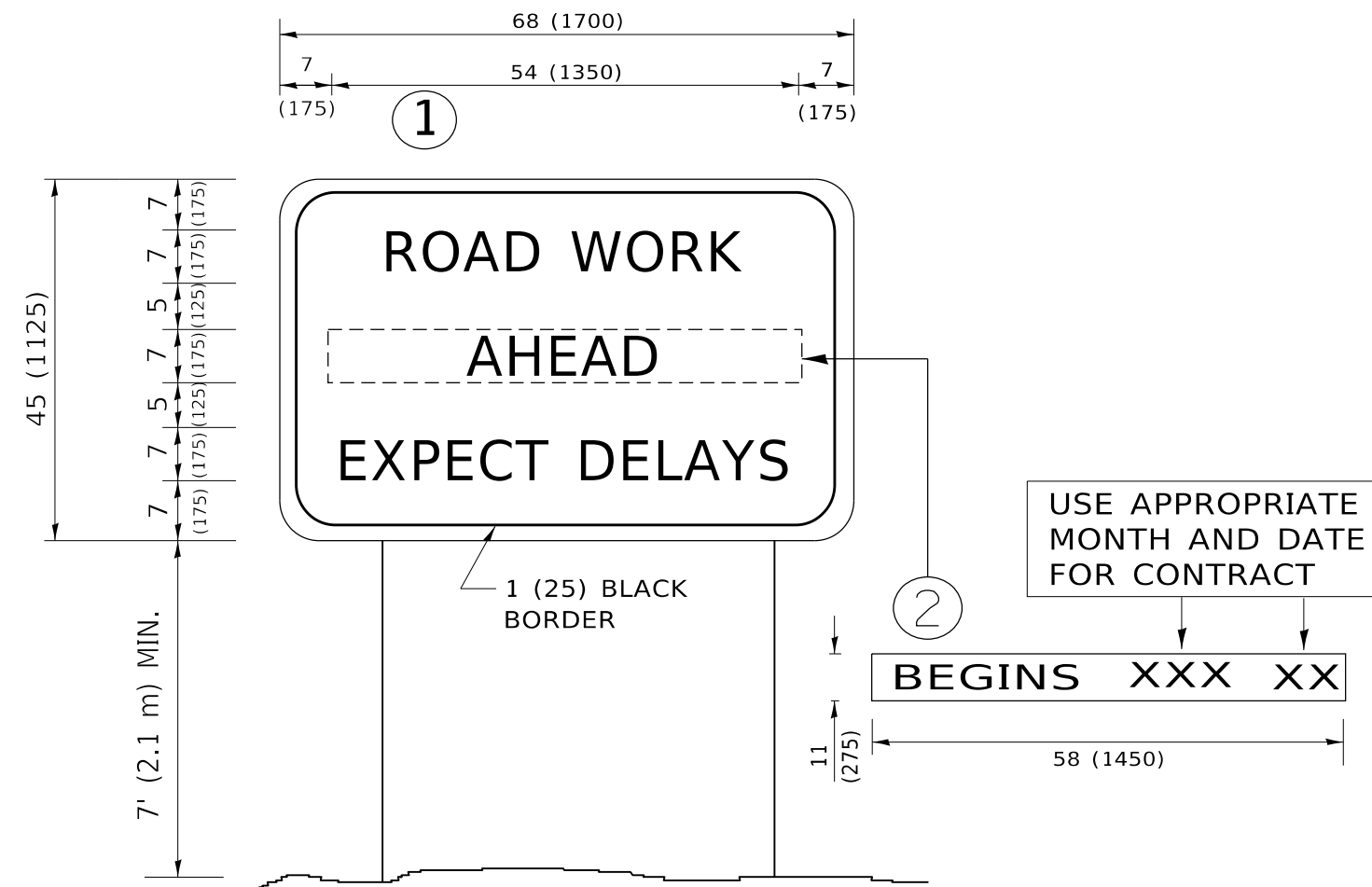
USER NAME = va@adoliv	DESIGNED - L.H.A.	REVISED - A. HOUSEH 10-15-96
PLOT SCALE = 100.0000' / in.	CHECKED -	REVISED - T. RAMMACHER 01-06-00
PLOT DATE = 12/13/2019	DATE - 06-89	REVISED - A. SCHUETZE 07-01-13
		REVISED - A. SCHUETZE 09-15-16

**STATE OF ILLINOIS
DEPARTMENT OF TRANSPORTATION**

**TRAFFIC CONTROL AND PROTECTION FOR
SIDE ROADS, INTERSECTIONS, AND DRIVEWAYS**

SCALE: NONE SHEET 1 OF 1 SHEETS STA. TO STA.

F.A.P. RTE.	SECTION	COUNTY	TOTAL SHEETS	SHEET NO.
350	3068-N	COOK	42	30
TC-10			CONTRACT NO. 62G01	
ILLINOIS FED. AID PROJECT				



NOTES:

1. USE BLACK LETTERING ON ORANGE BACKGROUND.
2. ERECT SIGNS IN ADVANCE OF THE LOCATION FOR THE "ROAD CONSTRUCTION AHEAD" SIGN AT LOCATIONS AS DIRECTED BY THE ENGINEER.
3. ERECT SIGN ① WITH INSTALLED PANEL ② ONE WEEK PRIOR TO THE START OF CONSTRUCTION.
4. REMOVE PANEL ② SOON AFTER THE START OF CONSTRUCTION.
5. SEE SPECIAL PROVISION FOR "TEMPORARY INFORMATION SIGNING" FOR ADDITIONAL INFORMATION.
6. ONE SIGN ASSEMBLY EQUALS 25.70 SQ. FT. (2.3 SQ. M.)
7. SHALL BE PAID FOR AS TEMPORARY INFORMATION SIGNING.

ALL DIMENSIONS ARE IN INCHES (MILLIMETERS) UNLESS OTHERWISE SHOWN.

MODEL: Default
 FILE: \\nas01c.psu.edu\lanroom\data\illinois.gov\RW\DOT\Documents\DOT_Offices\Illindec_1\Projects\123618\CADD\Design\Design\DES.dgn

USER NAME = va@adolliv	DESIGNED -	REVISED - R. MIRS 09-15-97
	DRAWN -	REVISED - R. MIRS 12-11-97
PLOT SCALE = 100.0000 ' / in.	CHECKED -	REVISED - T. RAMMACHER 02-02-99
PLOT DATE = 12/13/2019	DATE -	REVISED - C. JUCIUS 01-31-07

**STATE OF ILLINOIS
DEPARTMENT OF TRANSPORTATION**

**ARTERIAL ROAD
INFORMATION SIGN**

SCALE: NONE SHEET 1 OF 1 SHEETS STA. TO STA.

F.A.P. RTE.	SECTION	COUNTY	TOTAL SHEETS	SHEET NO.
350	3068-N	COOK	42	33
TC-22			CONTRACT NO. 62G01	
ILLINOIS FED. AID PROJECT				

TRAFFIC SIGNAL LEGEND

(NOT TO SCALE)

ITEM	EXISTING	PROPOSED	ITEM	EXISTING	PROPOSED	ITEM	EXISTING	PROPOSED
CONTROLLER CABINET			HANDHOLE -SQUARE			SIGNAL HEAD		
COMMUNICATION CABINET			HANDHOLE -ROUND			-(P) PROGRAMMABLE SIGNAL HEAD		
MASTER CONTROLLER			HEAVY DUTY HANDHOLE -SQUARE					
MASTER MASTER CONTROLLER			HEAVY DUTY HANDHOLE -ROUND					
UNINTERRUPTABLE POWER SUPPLY			DOUBLE HANDHOLE			SIGNAL HEAD WITH BACKPLATE		
SERVICE INSTALLATION -(P) POLE MOUNTED			JUNCTION BOX			-(P) PROGRAMMABLE SIGNAL HEAD		
SERVICE INSTALLATION -(G) GROUND MOUNTED			RAILROAD CANTILEVER MAST ARM			-(RB) RETROREFLECTIVE BACKPLATE		
-(GM) GROUND MOUNTED METERED			RAILROAD FLASHING SIGNAL					
TELEPHONE CONNECTION			RAILROAD CROSSING GATE			PEDESTRIAN SIGNAL HEAD AT RAILROAD INTERSECTIONS		
STEEL MAST ARM ASSEMBLY AND POLE			RAILROAD CROSSBUCK			PEDESTRIAN SIGNAL HEAD WITH COUNTDOWN TIMER		
ALUMINUM MAST ARM ASSEMBLY AND POLE			RAILROAD CONTROLLER CABINET			ILLUMINATED SIGN "NO LEFT TURN"/"NO RIGHT TURN"		
STEEL COMBINATION MAST ARM ASSEMBLY AND POLE WITH LUMINAIRE			UNDERGROUND CONDUIT (UC), GALVANIZED STEEL			NUMBER OF CONDUCTORS, ELECTRIC CABLE NO. 14, UNLESS NOTED OTHERWISE. ALL DETECTOR LOOP CABLE TO BE SHIELDED		
SIGNAL POST -(BM) BARREL MOUNTED - TEMPORARY			TEMPORARY SPAN WIRE, TETHER WIRE, AND CABLE			GROUND CABLE IN CONDUIT, NO. 6 SOLID COPPER (GREEN)		
WOOD POLE			SYSTEM ITEM			ELECTRIC CABLE IN CONDUIT, TRACER NO. 14 1/C		
GUY WIRE			INTERSECTION ITEM			COAXIAL CABLE		
SIGNAL HEAD			REMOVE ITEM			VENDOR CABLE		
SIGNAL HEAD WITH BACKPLATE			RELOCATE ITEM			COPPER INTERCONNECT CABLE, NO. 18, 3 PAIR TWISTED, SHIELDED		
SIGNAL HEAD OPTICALLY PROGRAMMED			ABANDON ITEM			FIBER OPTIC CABLE -NO. 62.5/125, MM12F		
FLASHER INSTALLATION -(FS) SOLAR POWERED			CONTROLLER CABINET AND FOUNDATION TO BE REMOVED			-NO. 62.5/125, MM12F SM12F		
PEDESTRIAN SIGNAL HEAD			MAST ARM POLE AND FOUNDATION TO BE REMOVED			-NO. 62.5/125, MM12F SM24F		
PEDESTRIAN PUSH BUTTON -(APS) ACCESSIBLE PEDESTRIAN PUSH BUTTON			SIGNAL POST AND FOUNDATION TO BE REMOVED					
RADAR DETECTION SENSOR			DETECTOR LOOP, TYPE I			GROUND ROD		
VIDEO DETECTION CAMERA			PREFORMED DETECTOR LOOP			-(C) CONTROLLER		
RADAR/VIDEO DETECTION ZONE			SAMPLING (SYSTEM) DETECTOR			-(M) MAST ARM		
PAN, TILT, ZOOM (PTZ) CAMERA			INTERSECTION AND SAMPLING (SYSTEM) DETECTOR			-(P) POST		
EMERGENCY VEHICLE LIGHT DETECTOR			QUEUE AND SAMPLING (SYSTEM) DETECTOR			-(S) SERVICE		
CONFIRMATION BEACON			WIRELESS DETECTOR SENSOR					
WIRELESS INTERCONNECT			WIRELESS ACCESS POINT					
WIRELESS INTERCONNECT RADIO REPEATER								

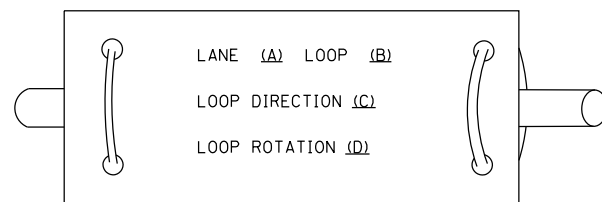
MODEL: Default
FILE NAME: p:\work\lanroom\dsl\illinois.gov\p\w\DOT\Documents\DOT - Offices\Berk: 1\Projects\12123618\CAD\baat\Design\Detail.dgn

USER NAME = valladolid DESIGNED - IP DRAWN - IP CHECKED - LP DATE - 9/29/2016	REVISED - REVISED - REVISED - REVISED -	STATE OF ILLINOIS DEPARTMENT OF TRANSPORTATION	DISTRICT ONE STANDARD TRAFFIC SIGNAL DESIGN DETAILS	F.A.P RTE. 350	SECTION 3068-N	COUNTY COOK	TOTAL SHEETS 42	SHEET NO. 35
				TS-05		CONTRACT NO. 62G01		
				SCALE: NONE		SHEET 1 OF 7 SHEETS STA. TO STA.		
ILLINOIS FED. AID PROJECT								

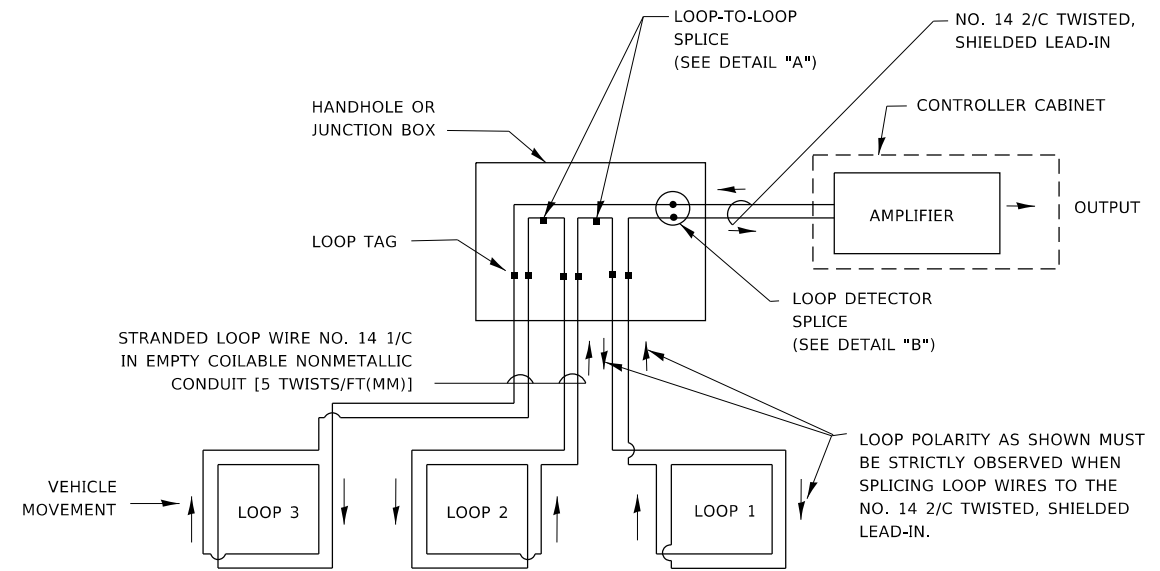
LOOP DETECTOR NOTES

1. EACH PAIR OF LOOP WIRES SHALL BE PLACED IN A SEPARATE EMPTY COILABLE NONMETALLIC CONDUIT FROM THE EDGE OF PAVEMENT TO THE HANDHOLE. SPACING BETWEEN THE HOLES DRILLED IN THE PAVEMENT SHALL NOT BE LESS THAN 6" (150 mm). EMPTY COILABLE NONMETALLIC CONDUIT SHALL BE INCLUDED IN THE COST OF THE LOOP WIRE.
2. THE NUMBER OF LOOP TURNS SHALL BE AS RECOMMENDED BY THE AMPLIFIER MANUFACTURER. ALL ADJACENT SIDES OF THE LOOPS SHALL BE INSTALLED IN SUCH A WAY THAT THE CURRENT FLOW IS IN THE SAME DIRECTION TO REINFORCE ITS MAGNETIC FIELDS FOR SMALL VEHICLE DETECTION.
3. EACH LOOP LEAD-IN SHALL BE IDENTIFIED AND PERMANENTLY TAGGED IN THE HANDHOLE. EACH LEAD-IN CABLE TAG SHALL INDICATE THE LOCATION OF THE LOOP, LOOP ROTATION (CLOCKWISE/COUNTERCLOCKWISE), LOOP LEAD-IN DIRECTION (IN OR OUT), LOOP CABLE NUMBER AND LOCATION IN CABINET, AND NUMBER OF TURNS IN THE DETECTOR LOOPS IN WATER PROOF INK AS INDICATED ON THE DISTRICT 1 STANDARD TRAFFIC SIGNAL DESIGN DETAIL. THE CONTRACTOR SHALL MARK LOOP LOCATIONS ON RECORD DRAWINGS AND PRESENT TO THE ENGINEER AFTER FINAL INSPECTION. LOOPS SHALL BE MARKED BY LANE AND LOOP NUMBER. SEE DETAIL BELOW.
4. ALL LOOP CABLE SHALL BE FASTENED WITH PLASTIC TIE WRAP TO THE HANDHOLE HOOKS.
5. IN ASPHALT PAVEMENT, LOOPS SHOULD BE PLACED IN THE BINDER AND DIVEHOLES MARKED AT THE CURB WITH A SAW-CUT. THE SAW-CUT SHALL BE CUT IN ACCORDANCE WITH LOCAL AND E.P.A. DUST CONTROL REQUIREMENTS. DETECTOR LOOP(S) SHALL NOT BE INSTALLED IN WET CONDITIONS AND THE SAW-CUTS MUST BE FREE OF DEBRIS AND RESIDUE SUCH AS DUST AND WATER WHICH IS TO BE ACHIEVED BY THE USE OF COMPRESSED AIR, WIRE BRUSHING AND HEAT DRYING ACCORDING TO SEALANT MANUFACTURER REQUIREMENTS. THE DETECTOR WIRE SHALL BE HELD IN PLACE BY THE USE OF FORM WEDGES. WEDGES SHALL BE SPACED NO MORE THAN 18" (450 mm) APART.
6. LOOP SPLICES SHALL BE SOLDERED USING A SOLDERING IRON. BLOW TORCHES OR OTHER DEVICES WHICH OXIDIZE COPPER CABLE SHALL NOT BE ALLOWED FOR SOLDERING OPERATIONS. SEE DETAIL BELOW RIGHT.
7. PREFORMED DETECTOR LOOPS SHALL BE USED, AS SHOWN ON THE PLANS, WHERE NEW CONCRETE PAVEMENT IS PROPOSED. THE INSTALLATION OF PREFORMED LOOPS SHALL BE IN ACCORDANCE WITH THE DISTRICT 1 SPECIFICATIONS OR AS DIRECTED BY THE ENGINEER.

LOOP LEAD-IN CABLE TAG

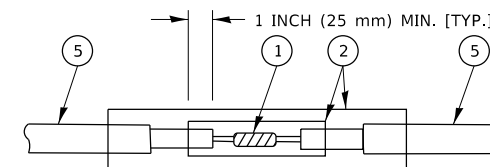


- A. LANE 1 IS THE LANE CLOSEST TO THE CENTERLINE OF THE ROADWAY
- B. LOOP #1 IS THE LOOP IN THE LANE CLOSEST TO THE INTERSECTION.
- C. LABEL LOOP CABLE "IN" OR LOOP CABLE "OUT".
- D. LABEL LOOP CABLE CLOCKWISE OR LOOP CABLE COUNTERCLOCKWISE.

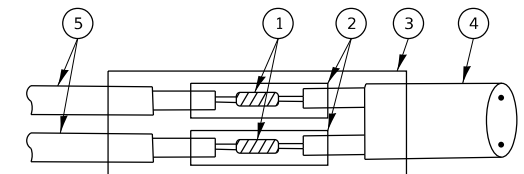


DETECTOR LOOP WIRING SCHEMATIC

- LOOPS SHALL BE SPLICED IN SERIES. SAW-CUTS SHALL BE A MINIMUM WIDTH OF 5/16" (8 mm).
- SAW-CUT DEPTHS SHALL BE 3" (75 mm). IF IN CONCRETE,
- THE SAW-CUT DEPTH SHALL BE TO THE TOP OF THE REINFORCEMENT.
- LOOP CORNERS SHALL BE DRILLED WITH A 2" (50 mm) DIAMETER CORE.

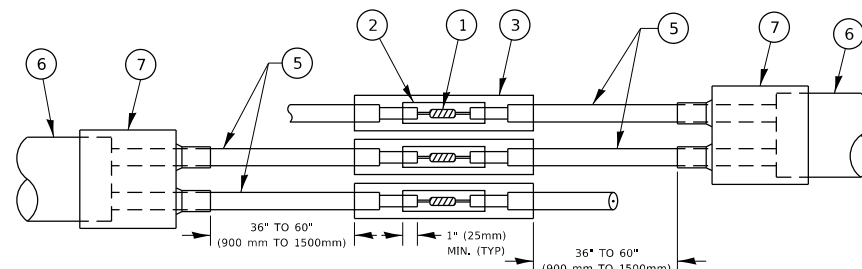


DETAIL "A"
LOOP-TO-LOOP SPLICE

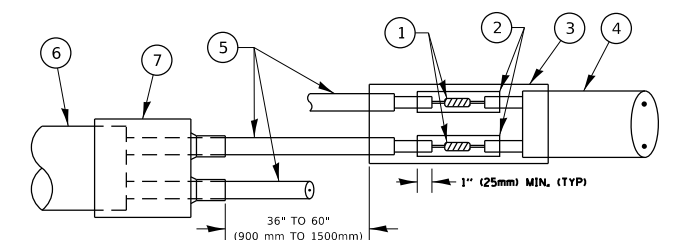


DETAIL "B"
LOOP-TO-CONTROLLER SPLICE

TYPE I LOOP



DETAIL "A"
LOOP-TO-LOOP SPLICE



DETAIL "B"
LOOP-TO-CONTROLLER SPLICE

PREFORMED LOOP

LOOP DETECTOR SPLICE

- 1 WESTERN UNION SPLICE SOLDERED WITH ROSIN CORE FLUX. ALL EXPOSED SURFACES OF THE SOLDER SHALL BE SMOOTH. THE WESTERN UNION SPLICES SHALL BE STAGGERED.
- 2 WCSMW 30/100 HEAT SHRINK TUBE, MINIMUM LENGTH 3" (75 mm), UNDERWATER GRADE.
- 3 WCS 200/750 HEAT SHRINK TUBE, MINIMUM LENGTH 6" (150 mm), UNDERWATER GRADE.
- 4 NO. 14 2/C TWISTED, SHIELDED CABLE.
- 5 LOOP CONDUCTOR WITH FLEXIBLE PLASTIC TUBE. PREFORMED LOOP
- 6 XL POLYOLEFIN 2 CONDUCTOR
- 7 BREAKOUT SEALS. TYCO CBR-2 OR APPROVED EQUAL

MODEL: Default
FILE NAME: \\pww\pww.com\dtd\illinois\gov\pww\DOT\Documents\DOT Offices\District 1\Projects\0123618\CAD\Drawings\Design\DistStd.dgn

USER NAME = valladolidv	DESIGNED -	REVISED -
PLOT SCALE = 100.3132' / in.	DRAWN -	REVISED -
PLOT DATE = 12/13/2019	CHECKED -	REVISED -
	DATE -	REVISED -

**STATE OF ILLINOIS
DEPARTMENT OF TRANSPORTATION**

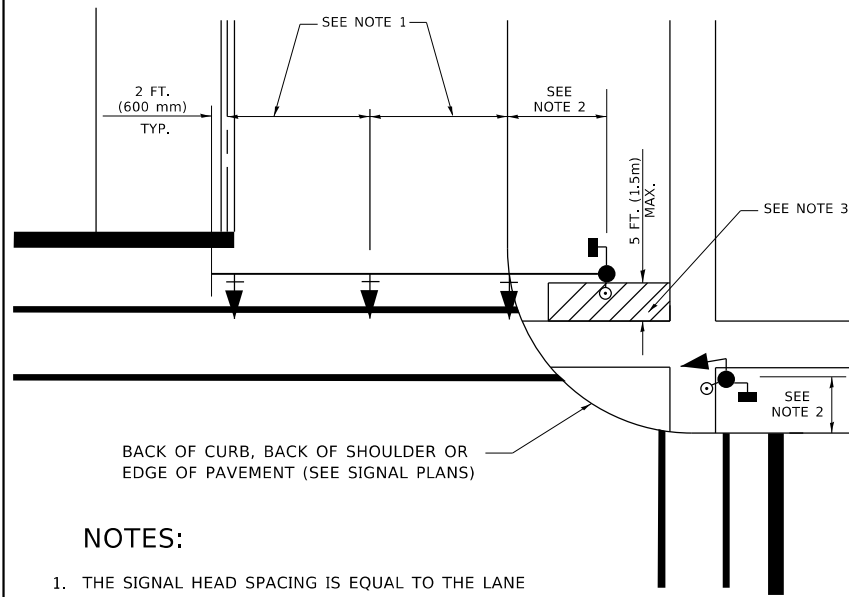
**DISTRICT ONE
STANDARD TRAFFIC SIGNAL DESIGN DETAILS**

SCALE: NONE SHEET 2 OF 7 SHEETS STA. TO STA.

F.A.P RTE. 350	SECTION 3068-N	COUNTY COOK	TOTAL SHEETS 42	SHEET NO. 36
TS-05		CONTRACT NO. 62G01		
ILLINOIS FED. AID PROJECT				

TRAFFIC SIGNAL MAST ARM AND SIGNAL POST

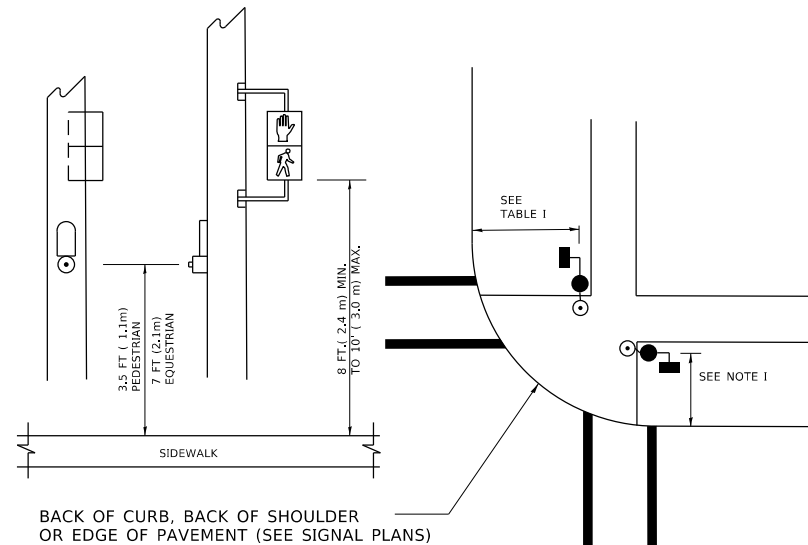
MAST ARM MOUNTED SIGNALS IN EXISTING, PROPOSED OR FUTURE SIDEWALK/BICYCLE PATH AREA. INTERSECTION SHOWN WITH PEDESTRIAN SIGNALS AND PEDESTRIAN PUSHBUTTON DETECTORS.



NOTES:

1. THE SIGNAL HEAD SPACING IS EQUAL TO THE LANE WIDTH OR AS SHOWN ON THE TRAFFIC SIGNAL PLAN.
2. REFER TO THE TRAFFIC SIGNAL EQUIPMENT OFFSET TABLE.
3. PROVIDE A LEVEL ALL-WEATHER SURFACE (CONCRETE SIDEWALK, ASPHALT BICYCLE PATH SURFACE OR MATCHING MATERIAL TO THE ADJACENT SURFACE) UP TO THE MAST ARM SHAFT OR THE SIGNAL POST.
4. THE FACE OF THE PEDESTRIAN PUSHBUTTON SHALL BE PARALLEL TO THE CROSSWALK TO BE USED.
5. THE LOCATIONS AND INSTALLATION OF PEDESTRIAN SIGNAL HEADS AND PEDESTRIAN PUSHBUTTONS SHALL MEET THE REQUIREMENTS OF THE MUTCD AND INFORMATION FOUND IN THE "AMERICANS WITH DISABILITIES ACT ACCESSIBILITY GUIDELINES FOR BUILDINGS AND FACILITIES."

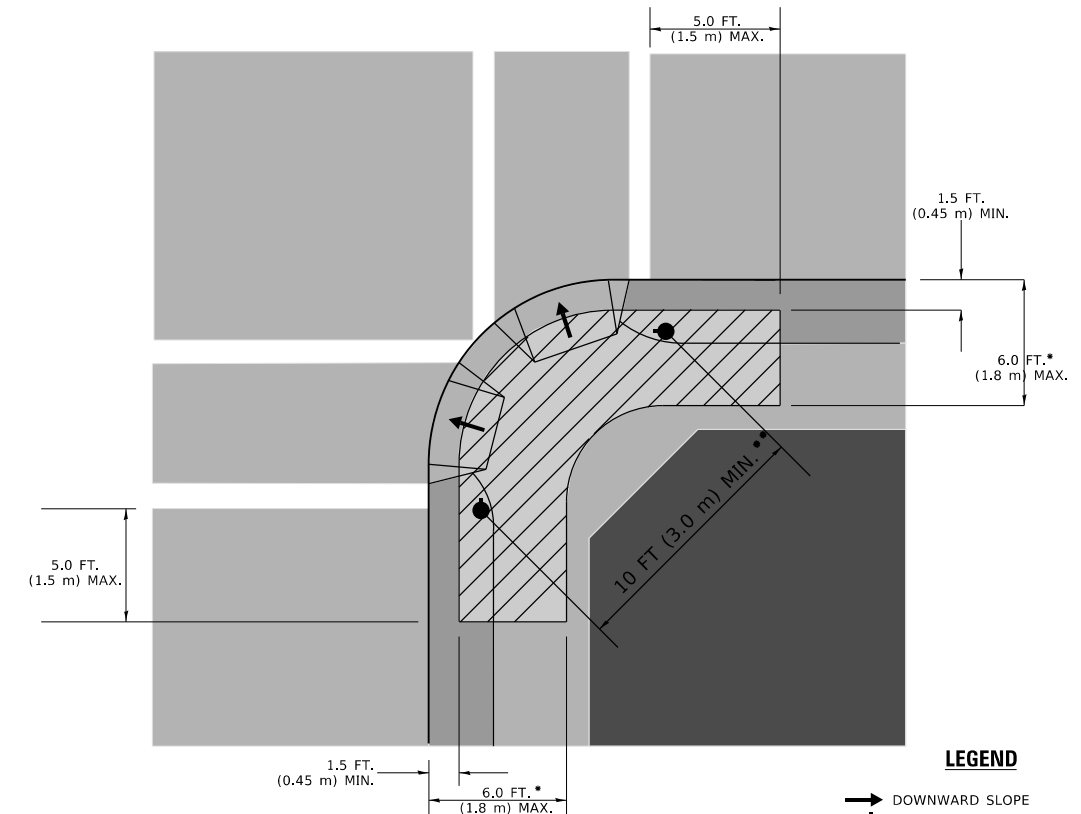
PEDESTRIAN SIGNAL POST AND PEDESTRIAN PUSH BUTTON POST



NOTES:

1. REFER TO THE TRAFFIC SIGNAL EQUIPMENT OFFSET TABLE.
2. PROVIDE A LEVEL ALL-WEATHER SURFACE (CONCRETE SIDEWALK, ASPHALT BICYCLE PATH SURFACE OR MATCHING MATERIAL TO THE ADJACENT SURFACE) UP TO THE PEDESTRIAN SIGNAL POST OR THE PEDESTRIAN PUSH BUTTON POST.
3. THE FACE OF THE PEDESTRIAN PUSHBUTTON SHALL BE PARALLEL TO THE CROSSWALK TO BE USED.
4. THE LOCATIONS AND INSTALLATION OF PEDESTRIAN SIGNAL HEADS AND PEDESTRIAN PUSHBUTTONS SHALL MEET THE REQUIREMENTS OF THE MUTCD AND INFORMATION FOUND IN THE "AMERICANS WITH DISABILITIES ACT ACCESSIBILITY GUIDELINES FOR BUILDINGS AND FACILITIES."

RECOMMENDED PUSHBUTTON LOCATIONS



LEGEND

- DOWNWARD SLOPE
- PEDESTRIAN PUSHBUTTON
- ▨ RECOMMENDED PUSHBUTTON LOCATIONS

* WHERE THERE ARE CONSTRAINTS THAT MAKE IT IMPRACTICAL TO PLACE THE PEDESTRIAN PUSHBUTTON BETWEEN 1.5 FT (0.45 m) AND 6 FT (1.8 m) FROM THE EDGE OF THE CURB, SHOULDER, OR PAVEMENT, IT SHOULD NOT BE FURTHER THAN 10 FT (3 m) FROM THE EDGE OF CURB, SHOULDER, OR PAVEMENT.

** WHERE THERE ARE CONSTRAINTS ON A PARTICULAR CORNER THAT MAKE IT IMPRACTICAL TO PROVIDE THE 10 FT (3 m) SEPERATION BETWEEN THE TWO PEDESTRIAN PUSHBUTTONS, THE PUSHBUTTONS MAY BE PLACED CLOSER TOGETHER OR ON THE SAME POLE.

NOTES:

1. PEDESTRIAN SIGNAL HEADS SHALL BE MOUNTED WITH THE BOTTOM OF THE SIGNAL HOUSING INCLUDING BRACKETS NOT LESS THAN 8 FT (2.4 m) OR MORE THAN 10 FT (3 m) ABOVE SIDEWALK LEVEL, AND SHALL BE POSITIONED AND ADJUSTED TO PROVIDE MAXIMUM VISIBILITY AT THE BEGINNING OF THE CONTROLLED CROSSWALK.
2. THE BOTTOM OF THE SIGNAL HOUSING (INCLUDING BRACKETS) OF A VEHICULAR SIGNAL FACE THAT IS NOT LOCATED OVER A HIGHWAY SHALL BE AT LEAST 8 FT (2.4 m) BUT NOT MORE THAN 19 FT (5.8 m) ABOVE THE SIDEWALK OR, IF THERE IS NO SIDEWALK, ABOVE THE PAVEMENT GRADE AT THE CENTER OF THE ROADWAY.
3. THE BOTTOM OF THE SIGNAL HOUSING AND ANY RELATED ATTACHMENTS TO A SIGNAL FACE LOCATED OVER ANY PORTION OF A HIGHWAY SHALL BE ACCORDING TO CURRENT STATE STANDARDS 877001, 877002, 877006, 877011 AND 877012 WITH A MINIMUM OF 16 FT (5.0 m) AND A MAXIMUM OF 18 FT. (5.5 m) FROM THE HIGHEST POINT OF PAVEMENT.
4. THE BOTTOM OF THE TEMPORARY SPAN WIRE MOUNTED SIGNAL HOUSING AND ANY RELATED ATTACHMENTS TO A SIGNAL FACE LOCATED OVER ANY PORTION OF A HIGHWAY SHALL BE ACCORDING TO CURRENT STATE STANDARD 880001 WITH A MINIMUM OF 17 FT (5.18 m) FROM THE HIGHEST POINT OF PAVEMENT.
5. THE TOP OF THE SIGNAL HOUSING OF A SIGNAL FACE LOCATED OVER ANY PORTION OF A HIGHWAY SHALL NOT BE MORE THAN 25.6 FT (7.8 m) ABOVE THE PAVEMENT.

TRAFFIC SIGNAL EQUIPMENT OFFSET

TRAFFIC SIGNAL EQUIPMENT	COMBINATION CONCRETE CURB AND GUTTER (MINIMUM DISTANCE FROM BACK OF CURB TO CENTERLINE OF FOUNDATION)	SHOULDER/NON-CURBED AREA (MINIMUM DISTANCE FROM EDGE OF PAVEMENT TO CENTERLINE OF FOUNDATION)
TRAFFIC SIGNAL MAST ARM POLE	6 FT (1.8m)	SHOULDER WIDTH + 2 FT (0.6m), MINIMUM 10 FT (3.0m)
TRAFFIC SIGNAL POST	4 FT (1.2m)	SHOULDER WIDTH + 2 FT (0.6m), MINIMUM 10 FT (3.0m)
PEDESTRIAN SIGNAL POST	4 FT (1.2m)	SHOULDER WIDTH + 2 FT (0.6m), MINIMUM 10 FT (3.0m)
PEDESTRIAN PUSHBUTTON POST	4 FT (1.2m)	SHOULDER WIDTH + 2 FT (0.6m), MINIMUM 10 FT (3.0m)
TEMPORARY WOOD POLE	6 FT (1.8m)	SHOULDER WIDTH + 2 FT (0.6m), MINIMUM 10 FT (3.0m)
CONTROLLER CABINET	6 FT (1.8m) MINIMUM DISTANCE SEE NOTE 2	SHOULDER WIDTH + 6 FT (1.8m), MINIMUM 16 FT (4.9m) SEE NOTE 3.
SERVICE INSTALLATION, GROUND MOUNT	6 FT (1.8m) MINIMUM DISTANCE SEE NOTE 2	SHOULDER WIDTH + 6 FT (1.8m), MINIMUM 16 FT (4.9m) SEE NOTE 3.

NOTES:

1. CONTACT THE "AREA TRAFFIC SIGNAL MAINTENANCE AND OPERATIONS ENGINEER" FOR ASSISTANCE IN LOCATING THE TRAFFIC SIGNAL EQUIPMENT WHEN THERE ARE CONFLICTS WITH DITCHES OR THE MINIMUM OFFSET DISTANCES CANNOT BE MET.
2. MINIMUM DISTANCE FROM THE BACK OF CURB TO THE ROADWAY SIDE OF THE FOUNDATION.
3. MINIMUM DISTANCE FROM THE EDGE OF PAVEMENT TO THE ROADWAY SIDE OF THE FOUNDATION.
4. ANY CHANGES TO THE OFFSETS OF THE FOUNDATIONS, FROM THE MINIMUM DISTANCES LISTED IN THE "TRAFFIC SIGNAL EQUIPMENT OFFSET" CHART AND THE TRAFFIC SIGNAL INSTALLATION PLAN, COULD EFFECT THE PLACEMENT OF THE SIGNAL HEADS, PEDESTRIAN SIGNAL HEADS AND THE PEDESTRIAN PUSHBUTTONS. THE SIGNAL HEAD PLACEMENT ON THE MAST ARMS SHALL REMAIN AS PER THE TRAFFIC SIGNAL INSTALLATION PLAN AND THE "TRAFFIC SIGNAL MAST ARM AND SIGNAL POST" DETAIL ABOVE. THE PROPOSED MAST ARM LENGTHS MAY NEED TO BE REVISED TO MEET THE ABOVE REQUIREMENTS. THE PEDESTRIAN SIGNAL HEADS AND PEDESTRIAN PUSHBUTTONS MUST MEET THE REQUIREMENTS UNDER THE DETAILS ON THIS SHEET.

MODEL: Default FILE: \\hpc\pub\baron\ada\illinois\gov\pww\DOT\Documents\DOT_Offices\Illinois\1\Projects\1236\B\CADD\Drawings\Design\DRS\54.dgn

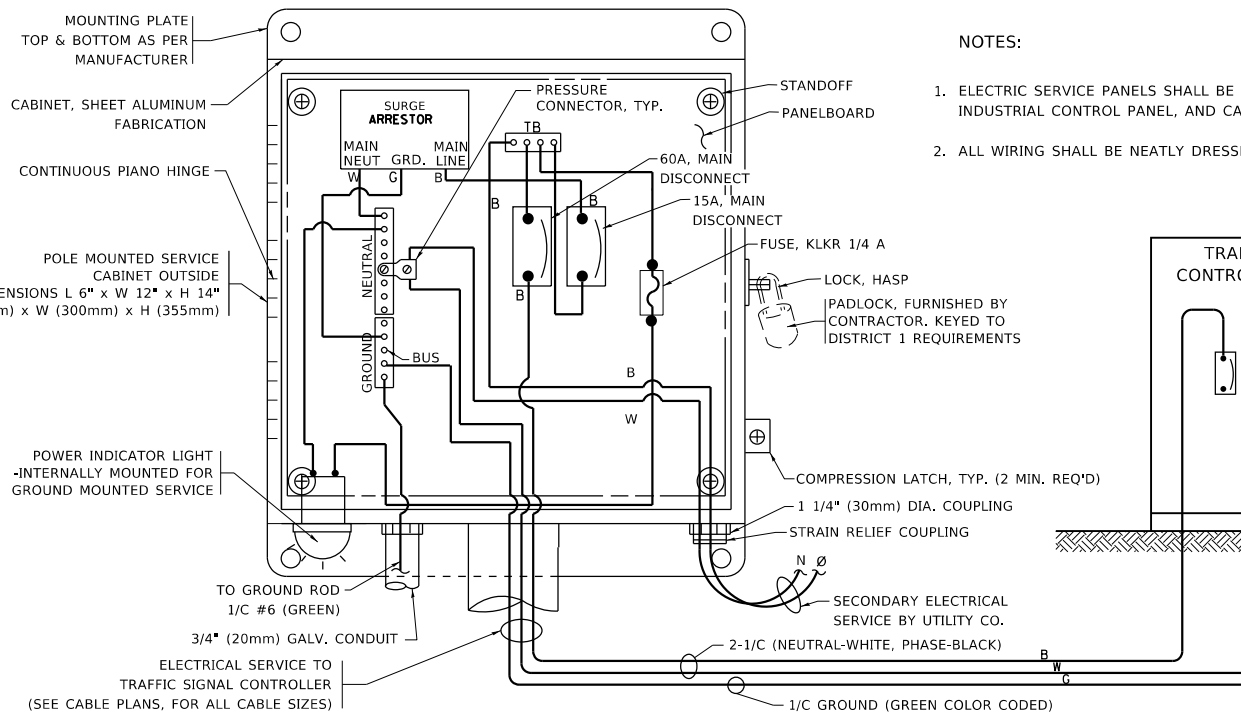
USER NAME = va@adoliv	DESIGNED -	REVISED -
	DRAWN -	REVISED -
PLOT SCALE = 100.0000 ' / in.	CHECKED -	REVISED -
PLOT DATE = 12/13/2019	DATE -	REVISED -

**STATE OF ILLINOIS
DEPARTMENT OF TRANSPORTATION**

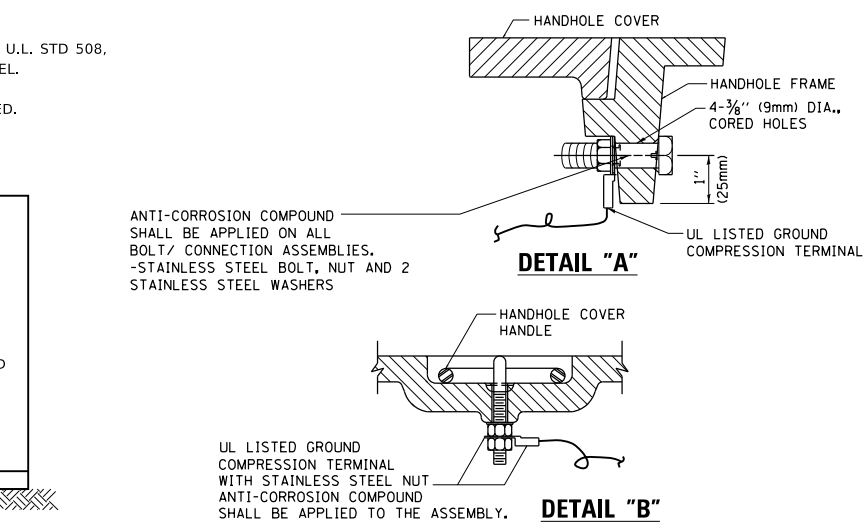
**DISTRICT ONE
STANDARD TRAFFIC SIGNAL DESIGN DETAILS**

SCALE: NONE SHEET 3 OF 7 SHEETS STA. TO STA.

F.A.P RTE.	SECTION	COUNTY	TOTAL SHEETS	SHEET NO.
350	3068-N	COOK	42	37
TS-05		CONTRACT NO. 62001		
ILLINOIS FED. AID PROJECT				

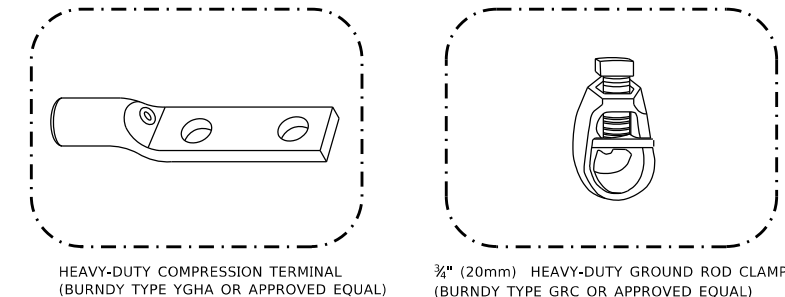


ELECTRICAL SERVICE – PANEL DIAGRAM (TYPICAL FOR POLE AND GROUND MOUNTED SERVICE)
SERVICE INSTALLATION POLE MOUNT (SHOWN)
 (NOT TO SCALE)



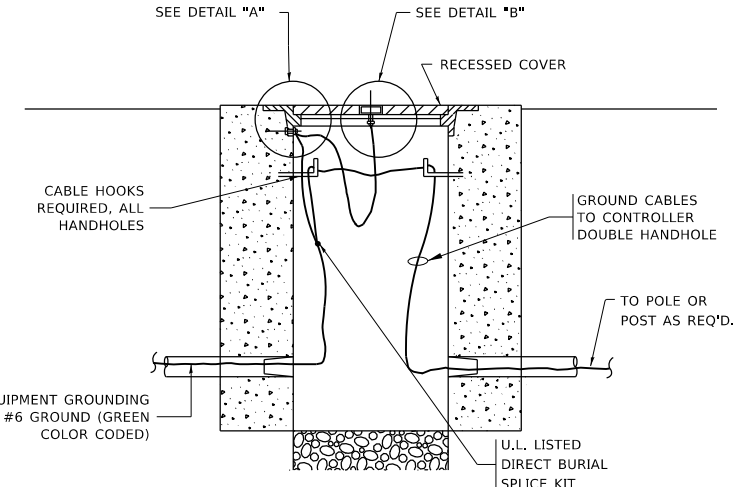
NOTES:
GROUNDING SYSTEM

- THE GROUNDING SYSTEM SHALL CONSIST OF AN INSULATED CONDUCTOR TYPE XLP, NO. 6 A.W.G., STRANDED COPPER TO BE INSTALLED IN RACEWAYS. THE GROUNDING CABLE SHALL BE INSTALLED IN A CONTINUOUS MANNER AS SHOWN ON THE CABLE PLAN PROVIDED. ALL GROUNDING CONDUCTORS SHALL BE BONDED TO METAL ENCLOSURE (HANDHOLE, POST, MAST ARM, CONTROLLER, ETC.). GROUND ROD SHALL BE 3/4" DIA. x 10'-0" (20mm x 3.0m) LONG, COPPER CLAD. ONE GROUND ROD SHALL BE INSTALLED AT ALL POST FOUNDATIONS, POLE FOUNDATIONS, CONTROLLER CABINET FOUNDATION AND ELECTRICAL SERVICE INSTALLATION AS INDICATED ON THE CABLE PLAN. IF THERE ARE ANY SPECIAL CONDITIONS SUCH AS SUB-SURFACE CONDITIONS OR INSTALLATION PROBLEMS, THE RESIDENT ENGINEER SHALL BE NOTIFIED OR CONTACT THE BUREAU OF TRAFFIC, ILLINOIS DEPARTMENT OF TRANSPORTATION DISTRICT ONE AT (847) 705-4139.
- THE NEUTRAL CONDUCTOR AND THE GROUND CONDUCTOR SHALL BE CONNECTED IN THE SERVICE INSTALLATION. AT NO OTHER POINT IN THE TRAFFIC SIGNAL SYSTEM SHALL THE NEUTRAL AND GROUND CONDUCTORS BE CONNECTED.
- ALL EQUIPMENT GROUNDING CONDUCTORS SHALL TERMINATE AT THE GROUND BUS IN THE CONTROLLER CABINET.
- THE CONTRACTOR SHALL PROVIDE A GROUND CABLE WITH CONNECTORS BETWEEN THE HANDHOLE COVER AND HANDHOLE FRAME.

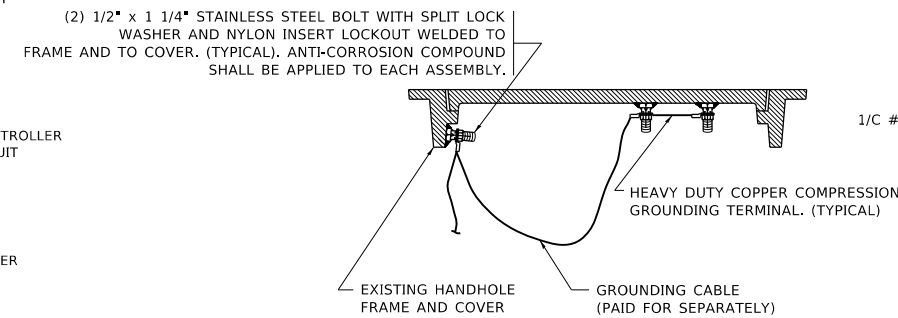


NOTES:

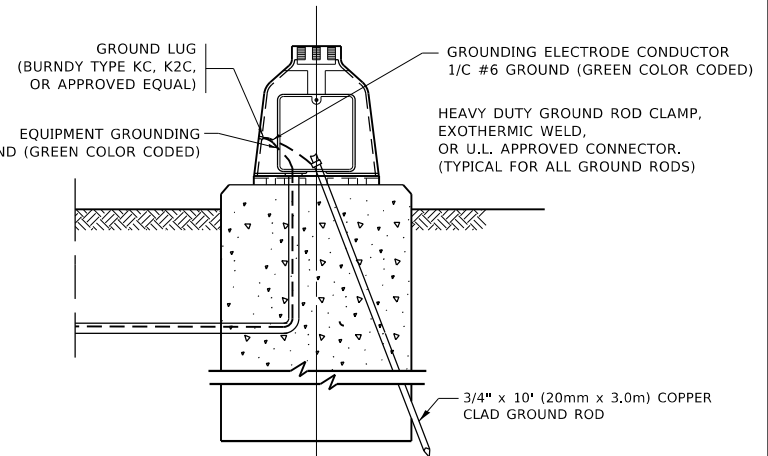
- ALL CLAMPS SHALL BE BRONZE OR COPPER, UL APPROVED.
- GROUND CABLE SHALL BE LOOPED OVER HOOKS IN THE HANDHOLES
 6.5' (2.0m) SLACK SHALL BE PROVIDED IN SINGLE HANDHOLES
 13' (4.0m) OF SLACK SHALL BE PROVIDED IN DOUBLE HANDHOLES.
 5' (1.4m) OF SLACK SHALL BE PROVIDED BETWEEN FRAME AND COVER.



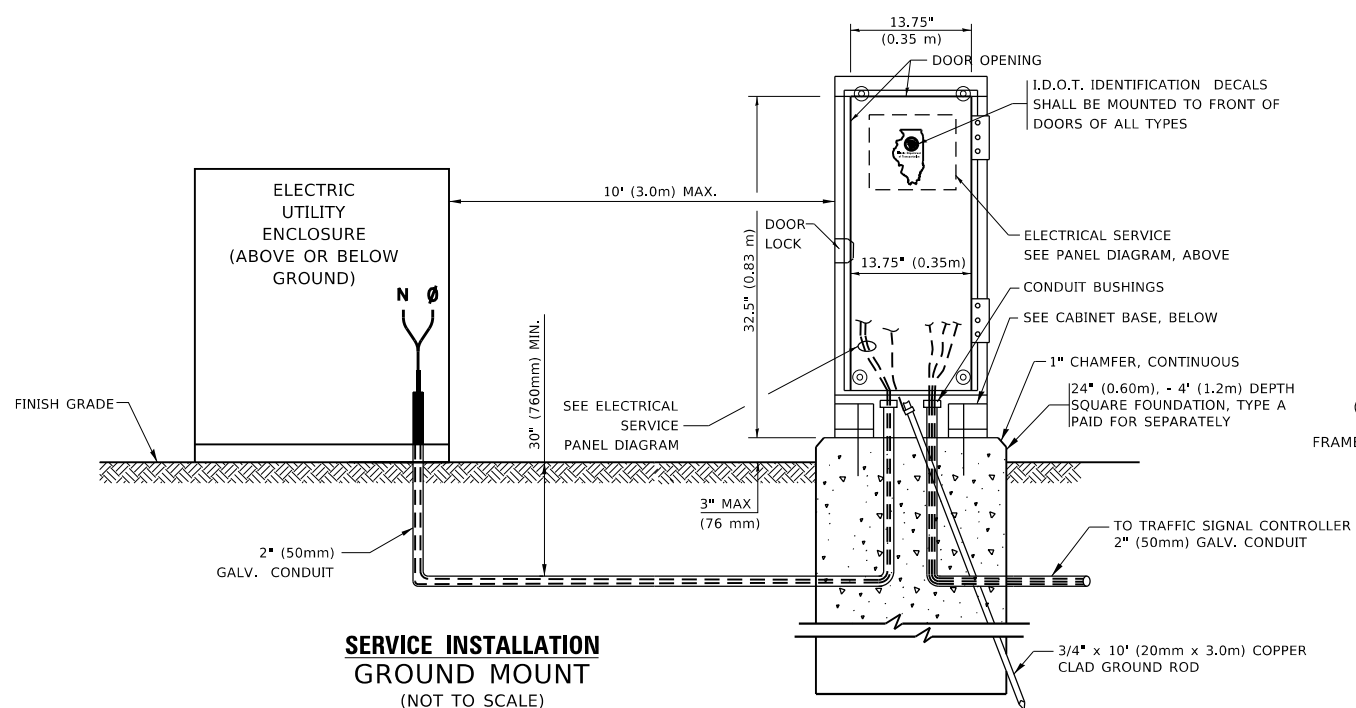
HANDHOLE COVER & FRAME – GROUNDING DETAIL
 (NOT TO SCALE)



EXISTING HANDHOLE COVER & FRAME – GROUNDING DETAIL
 (NOT TO SCALE)

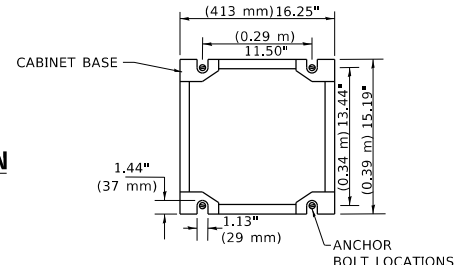


MAST ARM POLE /POST-GROUNDING DETAIL
 (NOT TO SCALE)



SERVICE INSTALLATION GROUND MOUNT
 (NOT TO SCALE)

CABINET – BASE BOLT PATTERN
 (NOT TO SCALE)



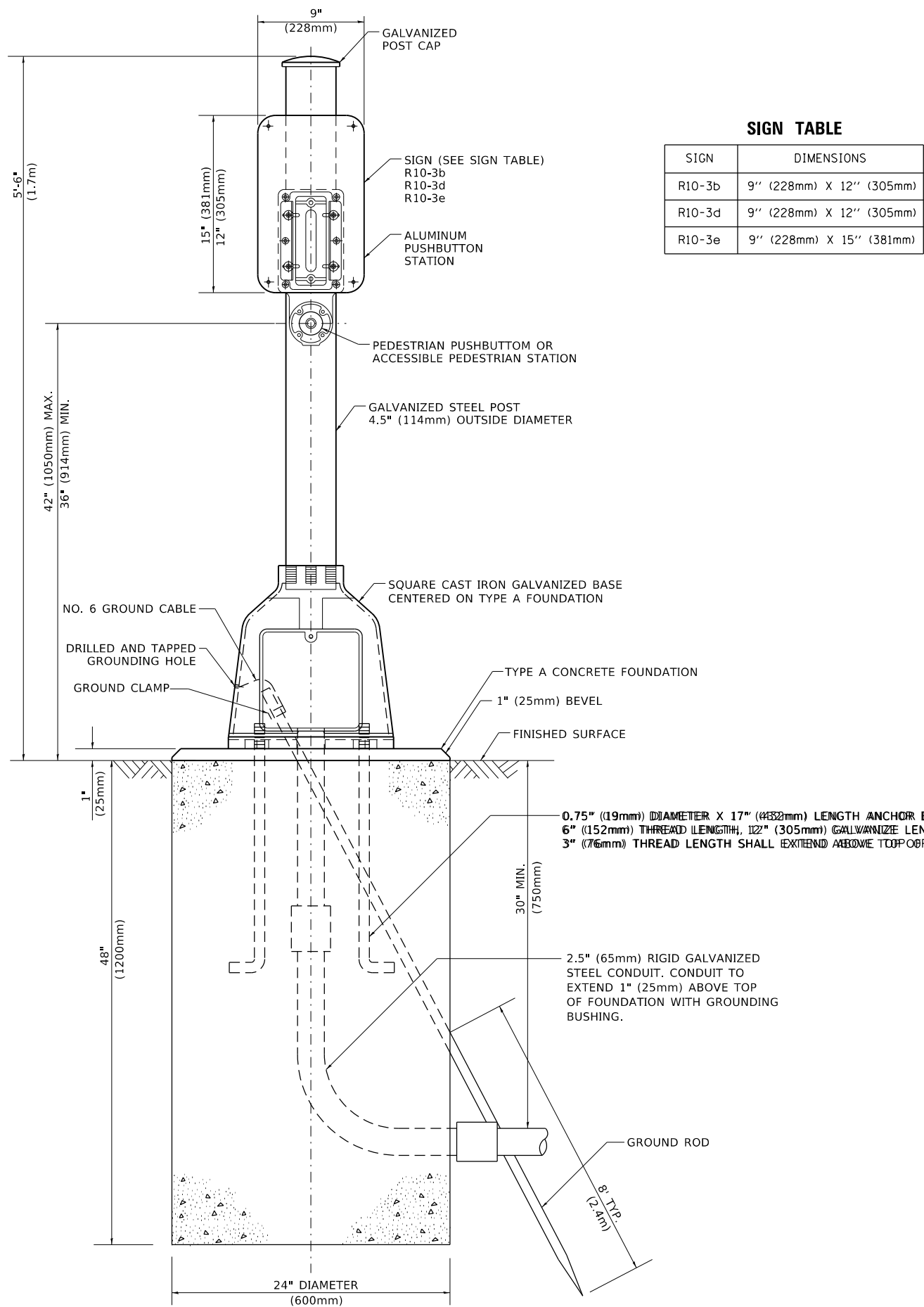
**STATE OF ILLINOIS
 DEPARTMENT OF TRANSPORTATION**

**DISTRICT ONE
 STANDARD TRAFFIC SIGNAL DESIGN DETAILS**

F.A.P. RTE.	SECTION	COUNTY	TOTAL SHEETS	SHEET NO.
350	3068-N	COOK	42	38
TS-05		CONTRACT NO.	62001	
SCALE: NONE		ILLINOIS FED. AID PROJECT		

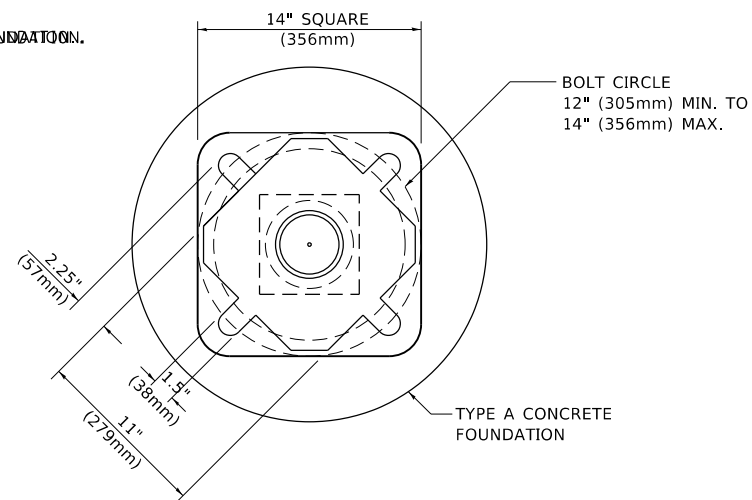
MODEL: Default
 FILE: \\nlsdc-prod\pub\room\dat\illinois.gov\PHOTO\Documents\DOT-Office\District-1\Projects\1236\B\Cadd\Design\Design\DESIGN.dgn
 PROJECT: 1236
 DATE: 12/13/2019

USER NAME = va@adoliv	DESIGNED -	REVISED -
PLOT SCALE = 100.0000' / in.	DRAWN -	REVISED -
PLOT DATE = 12/13/2019	CHECKED -	REVISED -
	DATE -	REVISED -



SIGN TABLE

SIGN	DIMENSIONS
R10-3b	9" (228mm) X 12" (305mm)
R10-3d	9" (228mm) X 12" (305mm)
R10-3e	9" (228mm) X 15" (381mm)



BOLT PATTERN

PEDESTRIAN PUSH BUTTON POST, TYPE A

MODEL: Default
 FILE: \\blm1c01.pw.state.il.us\pub\baronm.d\at\illinois.gov\PIWDOT\Documents\DOT_Offices\District_1\Projects\123618\CADD\ata\Design\DES.dgn

USER NAME = va@adodiv	DESIGNED -	REVISED -
	DRAWN -	REVISED -
PLOT SCALE = 100.0000' / in.	CHECKED -	REVISED -
PLOT DATE = 12/13/2019	DATE -	REVISED -

**STATE OF ILLINOIS
DEPARTMENT OF TRANSPORTATION**

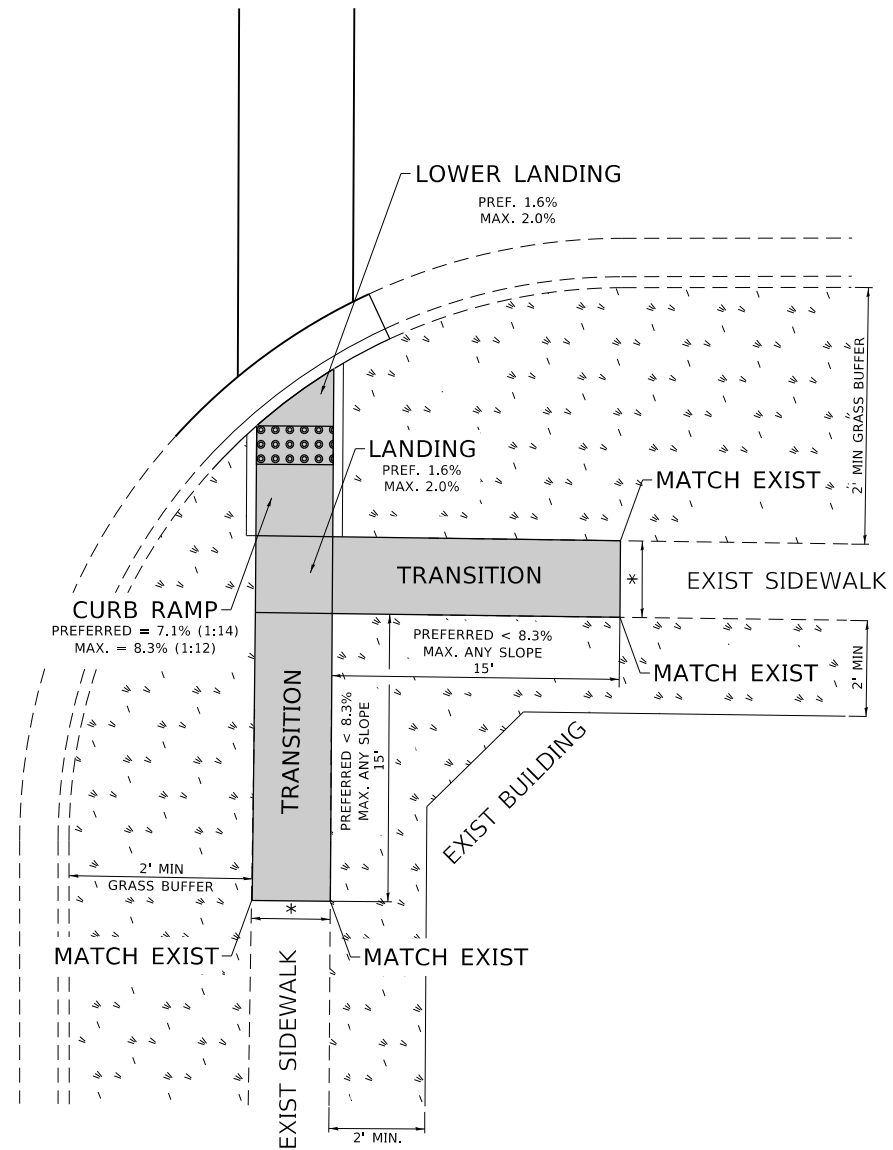
**DISTRICT ONE
STANDARD TRAFFIC SIGNAL DESIGN DETAILS**

SCALE: NONE SHEET 7 OF 7 SHEETS STA. TO STA.

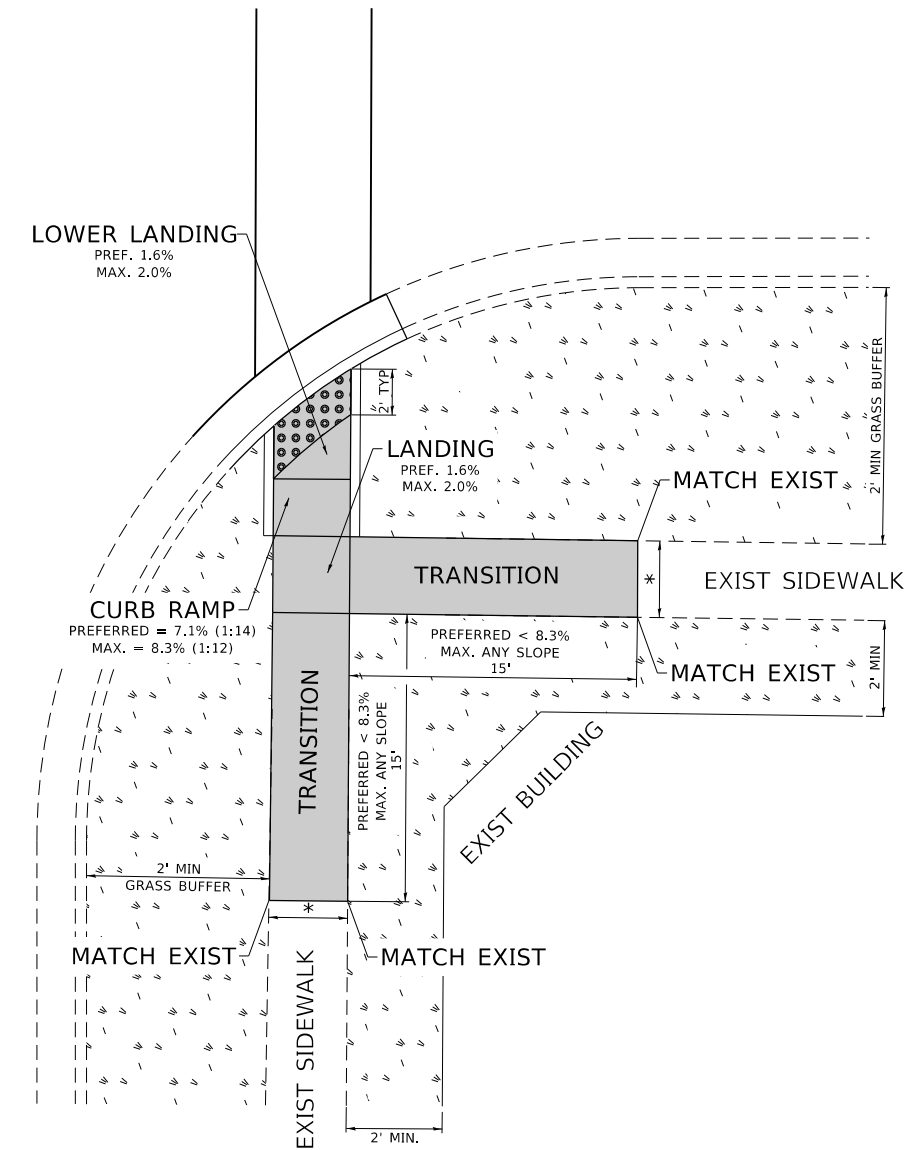
F.A.P. RTE.	SECTION	COUNTY	TOTAL SHEETS	SHEET NO.
350	3068-N	COOK	42	41
TS-05			CONTRACT NO. 62G01	
ILLINOIS FED. AID PROJECT				

ADA DETAIL FOR SINGLE PERPENDICULAR CURB RAMPS W/ TURNING SPACE

PD-04A



PD-04B



LEGEND

- EXIST. GRASS
- PROPOSED SIDE CURB
- PROPOSED SIDEWALK
- DETECTABLE WARNINGS

CONSTRUCTION NOTES:

- 1) ALL CROSS SLOPES ARE PREFERRED 1.6% (1:64), MAXIMUM 2% (1:50) EXCEPT WHEN TRANSITIONING TO EXISTING SIDEWALK
- * MATCH EXISTING SIDEWALK WIDTH

MODEL: Default
FILE: \\harc...
PROJECT: ...

USER NAME = va@adot.idv	DESIGNED -	REVISED -
	DRAWN - R. LEDEZMA	REVISED -
PLOT SCALE = 100.0000' / in.	CHECKED -	REVISED -
PLOT DATE = 12/13/2019	DATE - 10/02/2019	REVISED -

**STATE OF ILLINOIS
DEPARTMENT OF TRANSPORTATION**

**PROJECT DETAIL FOR SINGLE PERPENDICULAR CURB RAMPS WITH
TURNING SPACE (PD-04)**

SCALE: NONE SHEET OF SHEETS STA. TO STA.

F.A.P. RTE.	SECTION	COUNTY	TOTAL SHEETS	SHEET NO.
350	3068-N	COOK	42	42
PD-04			CONTRACT NO. 62G01	
ILLINOIS FED. AID PROJECT				