

142

03-06-2020 LETTING ITEM 142

FOR INDEX OF SHEETS, SEE SHEET NO. 2

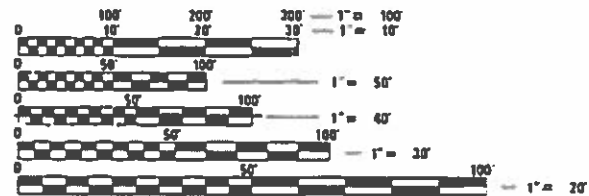
TRAFFIC DATA

	2019 ADT
US ROUTE 30 (EAST LEG)	17,400
US ROUTE 30 (WEST LEG)	18,000
IL ROUTE 43 (NORTH LEG)	15,800
IL ROUTE 43 (SOUTH LEG)	7,950

HIGHWAY FUNCTIONAL CLASSIFICATION

US ROUTE 30 (EAST LEG)	PRINCIPAL ARTERIAL
US ROUTE 30 (WEST LEG)	PRINCIPAL ARTERIAL
IL ROUTE 43 (NORTH LEG)	PRINCIPAL ARTERIAL
IL ROUTE 43 (SOUTH LEG)	MAJOR COLLECTOR

PROJECT IS LOCATED IN:
VILLAGE OF FRANKFORT



FULL SIZE PLANS HAVE BEEN PREPARED USING STANDARD ENGINEERING SCALES. REDUCED SIZED PLANS WILL NOT CONFORM TO STANDARD SCALES. IN MAKING MEASUREMENTS ON REDUCED PLANS, THE ABOVE SCALES MAY BE USED.

J.U.L.I.E.
JOINT UTILITY LOCATION INFORMATION FOR EXCAVATORS
1-800-892-0123
OR 811

MEADE ELECTRIC CO. DISTRICT ONE ELECTRICAL
MAINTENANCE CONTRACTOR LOCATES IDOT ELECTRICAL
EQUIPMENT AND UNDERGROUND CABLES
773-287-7672

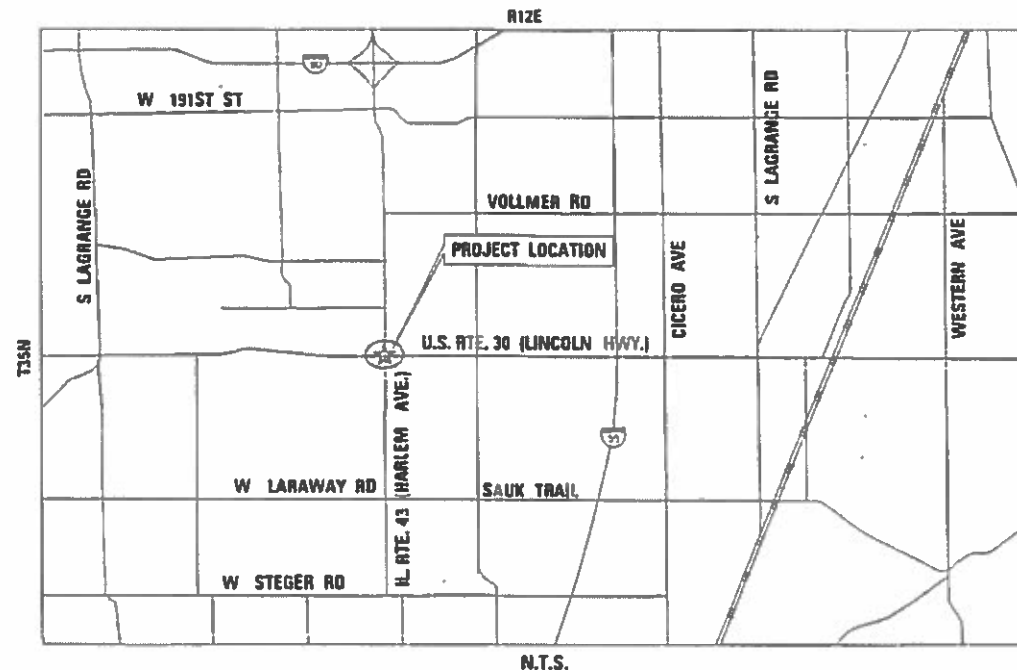
PROJECT MANAGER: DARYLE DREW (847) 705-4424
PROJECT ENGINEER: TONY GODINHO (847) 705-4442

CONTRACT NO. 62K56

STATE OF ILLINOIS
DEPARTMENT OF TRANSPORTATION
**PROPOSED
HIGHWAY PLANS**

FAP 353 IL RTE 43 (HARLEM AVE)
AT US RTE 30 (LINCOLN HWY)

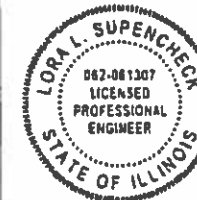
SECTION 2019-183-L
PROJECT
HIGH MAST LIGHTING REPLACEMENT
COOK COUNTY
C-91-158-20



GROSS LENGTH = 3,350.00 FT. = 0.634 MILE
NET LENGTH = 3,350.00 FT. = 0.634 MILE



LOCATION OF SECTION INDICATED THUS: -



Lora L. Supencheck
1/22/2020

LORA L. SUPENCHECK, P.E. DATE
LICENSE NO.: 062-061307
EXPIRES: 11-30-2021
SHEETS: 5-6



R.D. Patel
1/22/2020

RASHESHKUMAR D. PATEL, P.E. DATE
LICENSE NO.: 062-064617
EXPIRES: 11-30-2021
SHEETS: 1-4, 6-12



230 WEST MONROE STREET
SUITE 1400
CHICAGO, IL 60606
(312) 629-0240
ILLINOIS PROFESSIONAL DESIGN FIRM
REGISTRATION NO. 184001179-002

STATE OF ILLINOIS
DEPARTMENT OF TRANSPORTATION
SUBMITTED 1/24
Anthony J. Prunty REGIONAL ENGINEER
Jan 31 2020 ENGINEER OF DESIGN AND ENVIRONMENT
Jan 31 2020 DIRECTOR OF HIGHWAYS PROJECT IMPLEMENTATION

PRINTED BY THE AUTHORITY
OF THE STATE OF ILLINOIS

FINAL SUBMITTAL
JANUARY 10, 2020

INDEX OF SHEETS

SHEET NUMBERS	DRAWING NUMBERS	DESCRIPTION
1		COVER
2	GEN-1	INDEX OF SHEETS, HIGHWAY STANDARDS, DISTRICT ONE DETAILS AND GENERAL NOTES
3	SOQ-1	SUMMARY OF QUANTITIES
4	SOQ-2	SUMMARY OF QUANTITIES
5	C-01	CIVIL SITE PLAN IL RTE 43 (SHEET 1 OF 2) (HARLEM AVE) AT US RTE 30 (LINCOLN HWY)
6	C-02	CIVIL SITE PLAN IL RTE 43 (SHEET 2 OF 2) (HARLEM AVE) AT US RTE 30 (LINCOLN HWY)
7	LT-01	LIGHTING LEGEND AND GENERAL NOTES
8	LT-02	SCHEDULE OF QUANTITIES
9	LT-03	REMOVAL LIGHTING PLAN IL RTE 43 (HARLEM AVE) AT US RTE 30 (LINCOLN HWY)
10	LT-04	PROPOSED LIGHTING PLAN (SHEET 1 OF 2) IL RTE 43 (HARLEM AVE) AT US RTE 30 (LINCOLN HWY)
11	LT-05	PROPOSED LIGHTING PLAN IL RTE 43 (SHEET 2 OF 2) (HARLEM AVE) AT US RTE 30 (LINCOLN HWY)
12	LT-06	LIGHTING CONTROLLER "CP" WIRING DIAGRAM
13	LT-07	EXISTING TRAFFIC SIGNAL PLANS IL RTE 43 (HARLEM AVE) AT US RTE 30 (LINCOLN HWY)
14 - 22	LT-08 TO LT-16	IDOT D1-BUREAU OF ELECTRICAL DETAIL STANDARDS

IDOT DISTRICT ONE STANDARD DETAILS

STANDARD NO.	TITLE
BE-200	LIGHTING CONTROLLER, BASE MOUNTED 480 VOLT, 200 AMP (DUAL)
BE-220	ELECTRIC SERVICE INSTALLATION SERVICE, REMOTE DISCONNECT
BE-305	LIGHT POLE FOUNDATION, METAL
BE-410	DAVIT LIGHT POLE 47'-6" MOUNTING HEIGHT
BE-701	LUMINAIRE SAFETY CABLE ASSEMBLY
BE-702	MISC. ELECTRICAL DETAILS SHEET A

HIGHWAY STANDARDS

STANDARD NO.	TITLE
000001 07	STANDARD SYMBOLS, ABBREVIATIONS, AND PATTERNS
001006 00	DECIMAL OF AN INCH AND OF A FOOT
701101 05	OFF-RD OPERATIONS, MULTILANE, 15' TO 24" FROM PAVEMENT EDGE
701701 10	URBAN LANE CLOSURE, MULTILANE INTERSECTION

GENERAL NOTES

- SEVENTY-TWO (72) HOURS BEFORE STARTING EXCAVATION, THE CONTRACTOR SHALL CALL JULIE AT 1-800-892-0123 TO HAVE THE LOCATION OF EXISTING UNDERGROUND UTILITIES MARKED IN THE FIELD.
- A MINIMUM OF SEVENTY-TWO HOURS PRIOR TO ANY PLACEMENT OR RELOCATION OF MAINTENANCE OF TRAFFIC DEVICES, CONTACT ILLINOIS DEPARTMENT OF TRANSPORTATION (IDOT) DISTRICT 1 BUREAU OF TRAFFIC.
- THE CONTRACTOR IS RESPONSIBLE FOR OBTAINING ALL NECESSARY PERMITS TO PERFORM WORK.
- THE CONTRACTOR SHALL BE RESPONSIBLE FOR THE PROTECTION OF ALL UNDERGROUND OR SURFACE UTILITIES EVEN THOUGH THEY MAY NOT BE SHOWN IN THE PLANS. ANY UTILITY THAT IS DAMAGED DURING CONSTRUCTION SHALL BE REPAIRED OR REPLACED TO THE SATISFACTION OF THE ENGINEER. THIS WORK WILL BE AT THE CONTRACTOR'S EXPENSE.
- THE CONTRACTOR SHALL COORDINATE WORK WITH UTILITIES IN ADVANCE OF WORKING IN THE VICINITY OF THEIR FACILITIES, AND ALLOW SUFFICIENT TIME FOR THEM TO PREFORM ADJUSTMENTS TO THEIR FACILITIES IN ACCORDANCE WITH THE CONTRACTOR'S SCHEDULE. COORDINATION EFFORTS SHALL BE INCLUDED IN THE COST OF THE CONTRACT BID PRICE.
- THE CONTRACTOR MUST CALL THE IDOT ELECTRICAL MAINTENANCE CONTRACTOR TO LOCATE IDOT FACILITY CABLES.
- IT SHALL BE THE CONTRACTOR'S RESPONSIBILITY TO VERIFY ALL DIMENSIONS AND CONDITIONS EXISTING IN THE FIELD PRIOR TO ORDERING MATERIALS AND BEGINNING CONSTRUCTION.
- THE CONTRACTOR WILL NOT BE ALLOWED TO SET UP A YARD OR FIELD OFFICE ON STATE PROPERTY WITHOUT WRITTEN PERMISSION FROM THE DEPARTMENT.
- THE ACTUAL NEED FOR AGGREGATE SUBGRADE IMPROVEMENT (CU YD) SHALL BE DETERMINED IN THE FIELD FOR SOILS THAT TEND TO BE UNSUITABLE OR UNSTABLE. THE ACTUAL NEED FOR REMOVAL AND REPLACEMENT WITH AGGREGATE SUBGRADE IMPROVEMENT (CU YD) WILL BE DETERMINED IN THE FIELD AT THE TIME OF CONSTRUCTION BY THE GEOTECHNICAL ENGINEER. ALL POTENTIALLY UNSTABLE SOILS SHOULD BE TESTED WITH A STATIC CONE PENETROMETER AND TREATED IN ACCORDANCE WITH ARTICLE 301.04 AND THE UNDERCUT GUIDELINES IN THE IDOT SUBGRADE STABILITY MANUAL. IF UNSTABLE AND/OR UNSUITABLE MATERIAL IS ENCOUNTERED, THE SOIL SHALL BE REMOVED AND REPLACED WITH AGGREGATE SUBGRADE IMPROVEMENT OR EMBANKMENT AS DETERMINED BY THE GEOTECHNICAL ENGINEER. IF UNSTABLE AND/OR UNSUITABLE MATERIAL IS NOT ENCOUNTERED, THEN THE QUANTITY SHALL BE DEDUCTED AND NO ADDITIONAL COMPENSATION WILL BE DUE THE CONTRACTOR.
- WHEN ARTIFICIAL LIGHTING IS USED IN NIGHT OPERATIONS THE CONTRACTOR SHALL EXERCISE THE UTMOST PRECAUTIONS IN PREVENTING ADVERSE VISIBILITY TO THE MOTORING PUBLIC, RESIDENTIAL AND ADJOINING COMMERCIAL AREAS.
- BARRICADES: TYPE I, TYPE II, AND TYPE III BARRICADES SHALL BE WEIGHTED IN A MANNER APPROVED BY THE MANUFACTURER SO THEY ARE NOT MOVED BY TRAFFIC.
- THE DEPARTMENT HAS NOT OBTAINED ANY PERMITS FOR OFFSITE BORROW, WASTE, USE (BWU) AREAS. PRIOR TO WORKING IN BWU AREAS, IF THE CONTRACTOR CHOOSES TO USE ACTIVITIES REQUIRING PERMITS IT IS THE CONTRACTOR'S RESPONSIBILITY TO SECURE THE PROPER PERMITS, IN ADDITION TO THE BORROW REVIEW (BDE 2289) AND USE/WASTE REVIEW (BDE 2290) SUBMITTALS, THE CONTRACTOR SHALL SUBMIT AN EROSION AND SEDIMENT CONTROL (ESC) PLAN FOR EVERY BWU SITE TO THE DEPARTMENT FOR ACCEPTANCE. GUIDELINES FOR ACCEPTABLE BWU PRACTICES CAN BE FOUND IN SECTION 11.0.1 AND 1 OF THE SWPPP. THE COST OF ALL MATERIALS AND LABOR NECESSARY TO COMPLY WITH THE ABOVE PROVISIONS TO PREPARE AND IMPLEMENT ESC PLANS WILL NOT BE PAID FOR SEPARATELY, BUT SHALL BE CONSIDERED AS INCLUDED IN THE UNIT BID PRICES OF THE CONTRACT AND NO ADDITIONAL COMPENSATION WILL BE ALLOWED.

MODEL: Default
 FILE NAME: \\0101P09\003\140601\Task-Order\11062\K56\04_CADD\CADD_Sheets\0162\K56-01-gen-01.dgn



USER NAME = mgarvida	DESIGNED - MG/BN	REVISED -
	DRAWN - UCM	REVISED -
PLOT SCALE = 2' / in.	CHECKED - RP	REVISED -
PLOT DATE = 7/3/2019	DATE - 01/10/2020	REVISED -

**STATE OF ILLINOIS
DEPARTMENT OF TRANSPORTATION**

**INDEX OF SHEETS, HIGHWAY STANDARDS, DISTRICT ONE
STANDART DETAILS AND GENERAL NOTES**

SCALE: SHEET OF SHEETS STA. TO STA.

F.A.P. RTE.	SECTION	COUNTY	TOTAL SHEETS	SHEET NO.
0353	2019-183-L	COOK/WILL	22	2
			CONTRACT NO. 62K56	
		ILLINOIS	FED. AID PROJECT	

GEN-01

URBAN

0021

CONSTRUCTION CODE

100% STATE 100% STATE

A B

CODE NO.	ITEM	UNIT	TOTAL QUANTITY	CONSTRUCTION CODE	
				COOK	COOK
20400800	FURNISHED EXCAVATION	CU YD	2	2	-
25000210	SEEDING, CLASS 2A	ACRE	0.3	0.3	-
25000400	NITROGEN FERTILIZER NUTRIENT	POUND	27	27	-
25000500	PHOSPHORUS FERTILIZER NUTRIENT	POUND	27	27	-
25000600	POTASSIUM FERTILIZER NUTRIENT	POUND	27	27	-
25100630	EROSION CONTROL BLANKET	SQ YD	1,415	1,415	-
67000400	ENGINEER'S FIELD OFFICE, TYPE A	CAL MO	7	-	7
67100100	MOBILIZATION	L SUM	1	-	1
80400100	ELECTRIC SERVICE INSTALLATION	EACH	1	-	1
80400200	ELECTRIC UTILITY SERVICE CONNECTION	L SUM	1	-	1
81028220	UNDERGROUND CONDUIT, GALVANIZED STEEL, 3" DIA.	FOOT	291	-	291
81028240	UNDERGROUND CONDUIT, GALVANIZED STEEL, 4" DIA.	FOOT	960	-	960
81603090	UNIT DUCT, 600V, 3-1C NO.4, 1/C NO.6 GROUND, (XLP-TYPE USE), 1 1/4" DIA. POLYETHYLENE	FOOT	7,375	-	7,375
81702220	ELECTRIC CABLE IN CONDUIT, 600V (XLP-TYPE USE) 1/C 350MCM	FOOT	150	-	150

MODEL: D:\a\j\l
FILE NAME: UG101\Projects\148601\Task Order\11062\K5604_CADD\CADD_Sheets\148601\K56-ph-ssq-01.dgn



USER NAME = mgarvida	DESIGNED - MG/BN	REVISED -
PLOT SCALE = 2' / in.	DRAWN - UCM	REVISED -
PLOT DATE = 7/3/2019	CHECKED - RP	REVISED -
	DATE - 01/10/2020	REVISED -

STATE OF ILLINOIS
DEPARTMENT OF TRANSPORTATION

SUMMARY OF QUANTITIES

SCALE: SHEET OF SHEETS STA. TO STA.

F.A.P. RTE.	SECTION	COUNTY	TOTAL SHEETS	SHEET NO.
0353	2019-183-L	COOK/WILL	22	3
ILLINOIS FED. AID PROJECT			CONTRACT NO. 62K56	

S00-01

URBAN

0021

CONSTRUCTION CODE

100% STATE 100% STATE

A B

COOK COOK

CODE NO.	ITEM	UNIT	TOTAL QUANTITY	COOK	COOK
82110008	LUMINAIRE, LED, ROADWAY, OUTPUT DESIGNATION H	EACH	31	-	31
82500420	LIGHTING CONTROLLER, BASE MOUNTED, 480VOLT, 200AMP (DUAL)	EACH	1	-	1
83050825	LIGHT POLE, ALUMINUM, 47.5 FT. M.H., 15 FT. DAVIT ARM	EACH	31	-	31
83600365	LIGHT POLE FOUNDATION, METAL, 15" BOLT CIRCLE, 10" X 8'	EACH	31	-	31
83800205	BREAKAWAY DEVICE, TRANSFORMER BASE, 15 INCH BOLT CIRCLE	EACH	31	-	31
84500110	REMOVAL OF LIGHTING CONTROLLER	EACH	1	-	1
84500120	REMOVAL OF ELECTRIC SERVICE INSTALLATION	EACH	1	-	1
84500130	REMOVAL OF LIGHTING CONTROLLER FOUNDATION	EACH	1	-	1
X1400190	REMOVAL OF HIGH MAST LUMINAIRES, SALVAGE	EACH	4	-	4
X7010216	TRAFFIC CONTROL AND PROTECTION, (SPECIAL)	L SUM	1	1	-
X8420502	REMOVAL OF LIGHT TOWER, NO SALVAGE	EACH	2	-	2
X8420510	REMOVAL OF TOWER FOUNDATION	EACH	2	-	2
Z0013798	CONSTRUCTION LAYOUT	L SUM	1		1
Z0033020	LUMINAIRE SAFETY CABLE ASSEMBLY	EACH	31	-	31
Z0033028	MAINTENANCE OF LIGHTING SYSTEM	CAL MO	7	-	7

MODEL: Default
FILE NAME: U:\10\Projects\14060\Task Order-11\62K56\04_CADD\CADD_Sheets\0162K56-sh-002.dgn

S00-02



USER NAME = mgarvida	DESIGNED - MG/BN	REVISED -
PLOT SCALE = 2' / in.	DRAWN - UCM	REVISED -
PLOT DATE = 7/3/2019	CHECKED - RP	REVISED -
	DATE - 01/10/2020	REVISED -

**STATE OF ILLINOIS
DEPARTMENT OF TRANSPORTATION**

SUMMARY OF QUANTITIES

SCALE: SHEET OF SHEETS STA. TO STA.

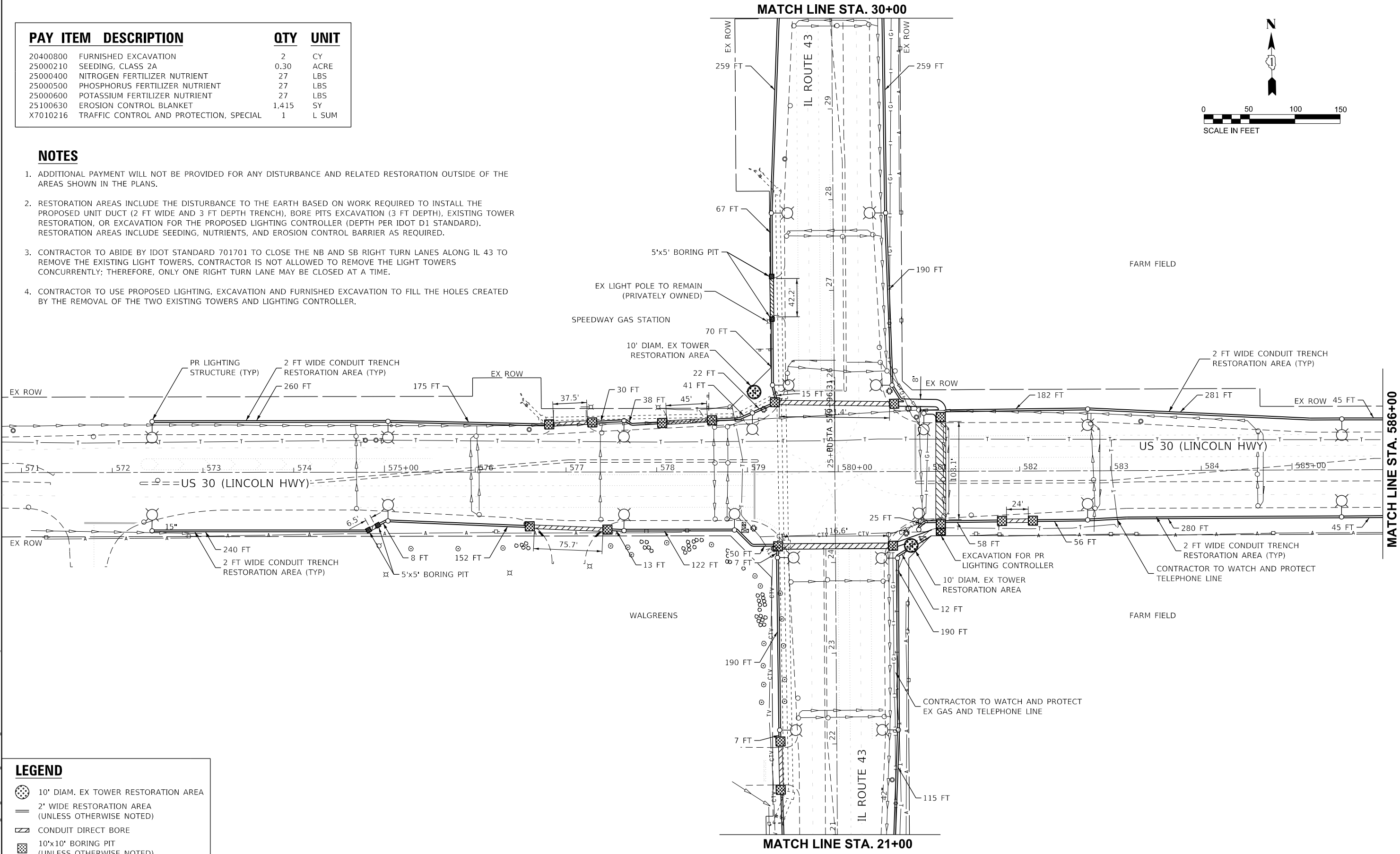
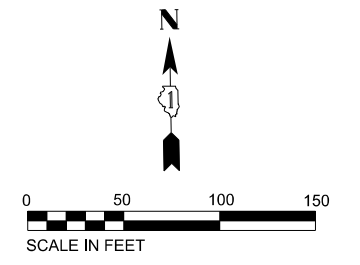
F.A.P. RTE. 0353	SECTION 2019-183-L	COUNTY COOK/WILL	TOTAL SHEETS 22	SHEET NO. 4
ILLINOIS FED. AID PROJECT			CONTRACT NO. 62K56	

REV. 1/27/20 REV. 1/24/20

PAY ITEM	DESCRIPTION	QTY	UNIT
20400800	FURNISHED EXCAVATION	2	CY
25000210	SEEDING, CLASS 2A	0.30	ACRE
25000400	NITROGEN FERTILIZER NUTRIENT	27	LBS
25000500	PHOSPHORUS FERTILIZER NUTRIENT	27	LBS
25000600	POTASSIUM FERTILIZER NUTRIENT	27	LBS
25100630	EROSION CONTROL BLANKET	1,415	SY
X7010216	TRAFFIC CONTROL AND PROTECTION, SPECIAL	1	L SUM

NOTES

- ADDITIONAL PAYMENT WILL NOT BE PROVIDED FOR ANY DISTURBANCE AND RELATED RESTORATION OUTSIDE OF THE AREAS SHOWN IN THE PLANS.
- RESTORATION AREAS INCLUDE THE DISTURBANCE TO THE EARTH BASED ON WORK REQUIRED TO INSTALL THE PROPOSED UNIT DUCT (2 FT WIDE AND 3 FT DEPTH TRENCH), BORE PITS EXCAVATION (3 FT DEPTH), EXISTING TOWER RESTORATION, OR EXCAVATION FOR THE PROPOSED LIGHTING CONTROLLER (DEPTH PER IDOT D1 STANDARD). RESTORATION AREAS INCLUDE SEEDING, NUTRIENTS, AND EROSION CONTROL BARRIER AS REQUIRED.
- CONTRACTOR TO ABIDE BY IDOT STANDARD 701701 TO CLOSE THE NB AND SB RIGHT TURN LANES ALONG IL 43 TO REMOVE THE EXISTING LIGHT TOWERS. CONTRACTOR IS NOT ALLOWED TO REMOVE THE LIGHT TOWERS CONCURRENTLY; THEREFORE, ONLY ONE RIGHT TURN LANE MAY BE CLOSED AT A TIME.
- CONTRACTOR TO USE PROPOSED LIGHTING. EXCAVATION AND FURNISHED EXCAVATION TO FILL THE HOLES CREATED BY THE REMOVAL OF THE TWO EXISTING TOWERS AND LIGHTING CONTROLLER.



LEGEND

- 10' DIAM. EX TOWER RESTORATION AREA
- 2' WIDE RESTORATION AREA (UNLESS OTHERWISE NOTED)
- CONDUIT DIRECT BORE
- 10'x10' BORING PIT (UNLESS OTHERWISE NOTED)
- PR LIGHTING UNIT

MODEL: Default
 FILE NAME: \\0101P09\0351140601\Task-Order_11162\K56\04_CADD\CADD_Sheets\0462K56-Plt-Civil\001.dgn



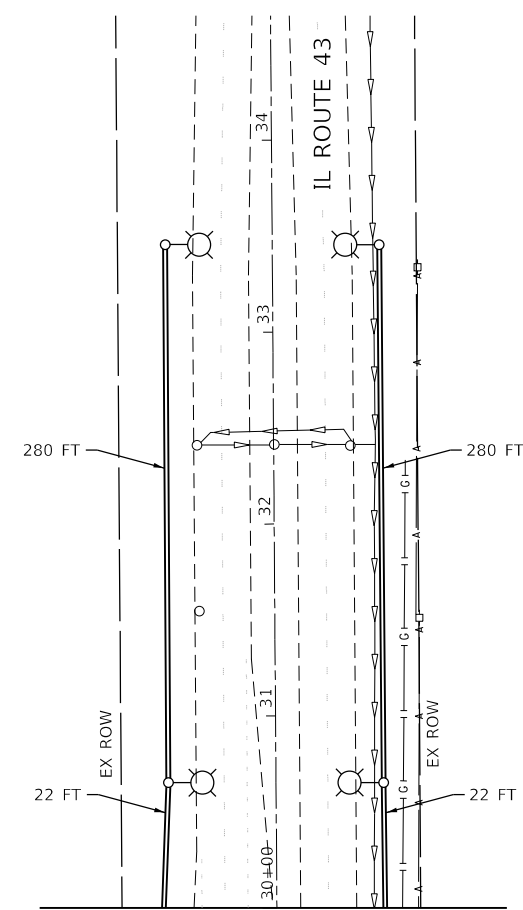
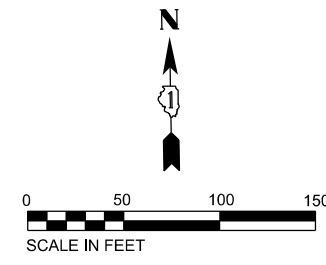
USER NAME = mgarvida	DESIGNED - RO	REVISED -
PLOT SCALE = 99.9998 ' / in.	DRAWN - RO	REVISED -
PLOT DATE = 7/3/2019	CHECKED - LLS	REVISED -
	DATE - 01/10/2020	REVISED -

**STATE OF ILLINOIS
DEPARTMENT OF TRANSPORTATION**

**CIVIL SITE PLAN (SHEET 1 OF 2)
IL RTE 43 (HARLEM AVE) AT US RTE 30 (LINCOLN HWY)**

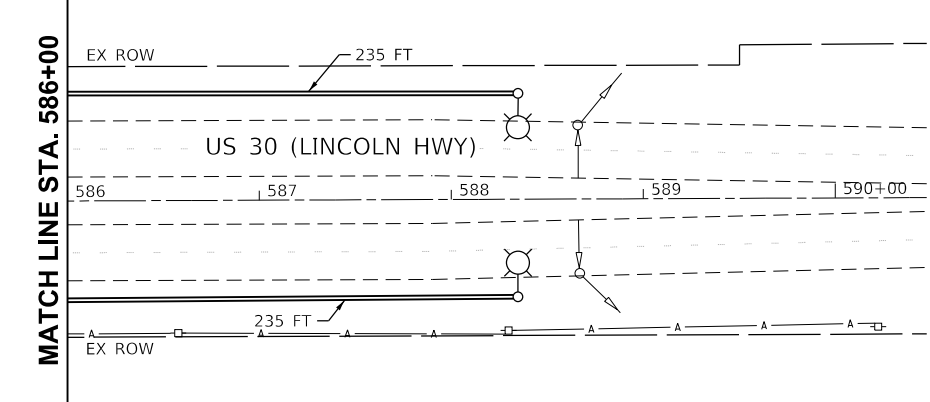
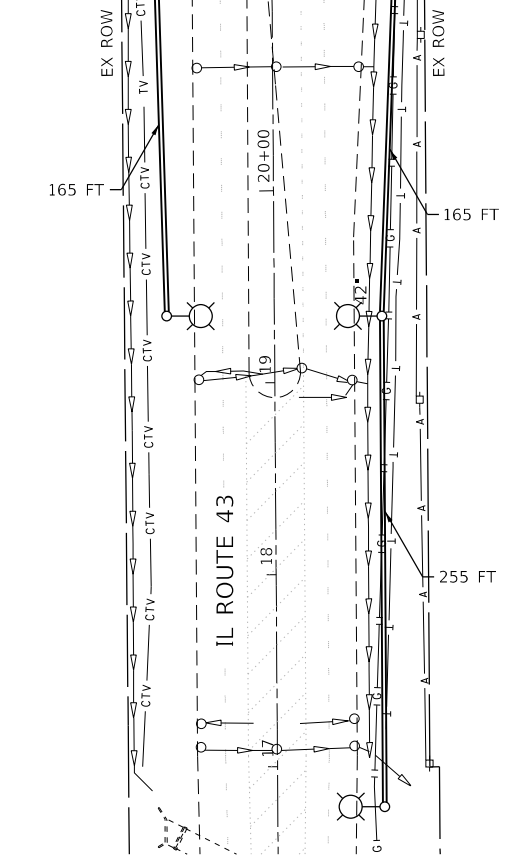
F.A.P. RTE. 0353	SECTION 2019-183-L	COUNTY COOK/WILL	TOTAL SHEETS 22	SHEET NO. 5
ILLINOIS FED. AID PROJECT			CONTRACT NO. 62K56	

C-01



MATCH LINE STA. 30+00

MATCH LINE STA. 21+00



MODEL: Default
 FILE NAME: \\G:\01\19\03\146601\Task-Order\11062\K56\04_CADD\CADD_Sheets\0162\K56-plc-ctrl-002.dgn



USER NAME = mgarvida	DESIGNED - RO	REVISED -
DRAWN - RO	CHECKED - LLS	REVISED -
PLOT SCALE = 99.9998 ' / in.	DATE - 01/10/2020	REVISED -
PLOT DATE = 7/3/2019		

**STATE OF ILLINOIS
DEPARTMENT OF TRANSPORTATION**

**CIVIL SITE PLAN (SHEET 2 OF 2)
IL RTE 43 (HARLEM AVE) AT US RTE 30 (LINCOLN HWY)**

SCALE: SHEET OF SHEETS STA. TO STA.

F.A.P. RTE. 0353	SECTION 2019-183-L	COUNTY COOK/WILL	TOTAL SHEETS 22	SHEET NO. 6
ILLINOIS FED. AID PROJECT			CONTRACT NO. 62K56	

C-02

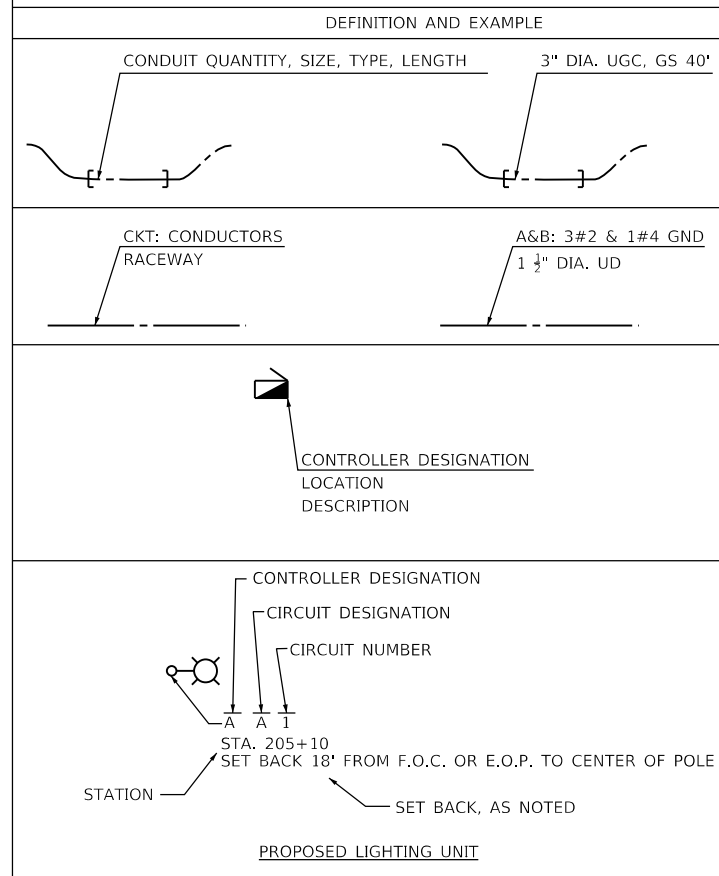
LIGHTING AND ELECTRICAL LEGEND

SYMBOL	DESCRIPTION
	EXISTING HIGH MAST LIGHTING FOUNDATION, TOWER, TO BE REMOVED AND LUMINAIRES TO BE SALVAGED.
	PROPOSED IDOT LIGHTING UNIT MOUNTED ON BREAKAWAY DEVICE METAL FOUNDATION, 47.5 FT M.H. U.N.O., 15 FT DAVIT ARM, LUMINAIRE TO BE LED, HORIZONTAL MOUNT, OUTPUT DESIGNATION H (240 VAC) U.N.O.
	EXISTING IDOT LIGHTING CONTROLLER TO BE REMOVED
	PROPOSED IDOT LIGHTING CONTROLLER
	EXISTING ELECTRIC UTILITY SERVICE TO BE REMOVED
	PROPOSED ELECTRIC UTILITY SERVICE
	EXISTING UNDERGROUND UNIT DUCT TO BE ABANDONED IN PLACE
	EXISTING UNIT DUCT IN EXISTING UNDERGROUND CONDUIT.
	PROPOSED UNIT DUCT, SIZE AND TYPE AS NOTED
	PROPOSED UNIT DUCT IN UNDERGROUND CONDUIT, SIZE AND TYPE AS NOTED

ABBREVIATIONS

ABBREVIATION	DESCRIPTION
AC	ALTERNATING CURRENT
A/C	AERIAL CABLE
ATS	ATTACHED TO STRUCTURE
B.O.C.	BACK OF CURB
CB	CIRCUIT BREAKER
CKT	CIRCUIT
CM	CENTIMETER
COMED	COMMONWEALTH EDISON COMPANY
CP	CONTROL PANEL
CT	CURRENT TRANSFORMER
DA	DAVIT ARM
DC	DIRECT CURRENT
DIA	DIAMETER
DP	DISTRIBUTION PANEL
E	EXISTING UNIT TO REMAIN
EX.	EXISTING
ECA	ELECTRIC CABLE ASSEMBLY
EIS	EMBEDDED IN STRUCTURE
E.O.P.	EDGE OF PAVEMENT
F.O.C.	FACE OF CURB
FT	FEET OR FOOT
FU	FUSE
GND	GROUND
HID	HIGH INTENSITY DISCHARGE
JB	JUNCTION BOX
KVA	KILOVOLT-AMPERE
KW	KILOWATTS
LED	LIGHT EMITTING DIODE
LP	LIGHT POLE
M	METER
MA	MAST ARM
MC	MULTI-CONDUCTOR
MM	MILLIMETER
M.H.	MOUNTING HEIGHT
MW	MESSENGER WIRE
NESC	NATIONAL ELECTRIC SAFETY CODE
NO. #	NUMBER
N.T.S.	NOT TO SCALE
P	PROPOSED
PB	PUSH BUTTON
PNL	PANEL
PVC	POLYVINYL CHLORIDE
PVCC RGC	PVC COATED RIGID GALVANIZED CONDUIT
PT	POTENTIAL TRANSFORMER
R	EXISTING UNIT TO BE REMOVED (OWNER SALVAGED U.N.O.)
RR	EXISTING UNIT TO BE REMOVED AND REINSTALLED
RECP	RECEPTACLE
RGC	RIGID GALVANIZED CONDUIT
SEL SW	SELECTOR SWITCH
SPARE	SPARE
SPACE	SPACE
SS	STAINLESS STEEL
STA	STATION
T/F	TOP OF FOUNDATION
UD	UNIT DUCT
U.N.O.	UNLESS NOTED OTHERWISE
UGC, GS	UNDERGROUND CONDUIT, GALVANIZED STEEL
VAC	VOLTS, ALTERNATING CURRENT
W	WATTS
WP	WOOD POLE
XFMR	TRANSFORMER
HPS	HIGH PRESSURE SODIUM
LPS	LOW PRESSURE SODIUM
LTFM	LIQUID TIGHT FLEXIBLE METALLIC

CALL-OUT SAMPLE



GENERAL NOTES

1. THE ELECTRICAL WORK SHALL BE PERFORMED IN ACCORDANCE WITH THE LATEST CODES, STANDARDS AND THE IDOT STANDARD SPECIFICATIONS FOR ROAD AND BRIDGE CONSTRUCTION ADOPTED APRIL 1, 2016, AND SUPPLEMENTAL SPECIFICATIONS AND RECURRING SPECIAL PROVISIONS.
2. THE CONTRACTOR SHALL CONTACT MEADE ELECTRIC CO. DISTRICT ONE ELECTRICAL MAINTENANCE CONTRACTOR TO LOCATE IDOT ELECTRICAL EQUIPMENT AND UNDERGROUND CABLES 773-287-7672.
3. ALL HIGH MAST LUMINAIRES THAT ARE BEING REMOVED SHALL BE SALVAGED TO IDOT.

IDOT-D1 STANDARD DETAILS:

STANDARD NO.	TITLE
BE-200	LIGHTING CONTROLLER, BASE MOUNTED 480 VOLT, 200 AMP (DUAL)
BE-220	ELECTRIC SERVICE INSTALLATION AERIAL, REMOTE DISCONNECT
BE-305	LIGHT POLE FOUNDATION, METAL
BE-410	DAVIT LIGHT POLE 47'-6" MOUNTING HEIGHT
BE-701	LUMINAIRE SAFETY CABLE ASSEMBLY
BE-702	MISC. ELECTRICAL DETAILS SHEET A

MODEL: Default
FILE NAME: \\0101P09\035140601\Task-Order\11062K56\04_CADD\CADD_Sheets\0162K56-rlt-light-01.dgn



USER NAME = mgarvida	DESIGNED - MG/BN	REVISED -
	DRAWN - UCM	REVISED -
PLOT SCALE = 100' / in.	CHECKED - RP	REVISED -
PLOT DATE = 7/3/2019	DATE - 01/10/2020	REVISED -

STATE OF ILLINOIS
DEPARTMENT OF TRANSPORTATION

LIGHTING LEGEND, GENERAL NOTES, AND INDEX OF DRAWING			
SCALE:	SHEET	OF SHEETS	STA. TO STA.

F.A.P. RTE.	SECTION	COUNTY	TOTAL SHEETS	SHEET NO.
0353	2019-183-L	COOK/WILL	22	7
				CONTRACT NO. 62K56
				ILLINOIS FED. AID PROJECT

LT-01

ITEM	UNIT	TOTAL QUANTITY
ELECTRIC SERVICE INSTALLATION	EACH	1
ELECTRIC UTILITY SERVICE CONNECTION	L SUM	1
UNDERGROUND CONDUIT, GALVANIZED STEEL, 3" DIA.	FOOT	291
UNDERGROUND CONDUIT, GALVANIZED STEEL, 4" DIA.	FOOT	960
UNIT DUCT, 600V, 3-1C NO.4, 1/C NO.6 GROUND, (XLP-TYPE USE), 1 1/4" DIA. POLYETHYLENE	FOOT	7,375
ELECTRIC CABLE IN CONDUIT, 600V (XLP-TYPE USE) 1/C 350MCM	FOOT	150
LUMINAIRE, LED, ROADWAY, OUTPUT DESIGNATION H	EACH	31
LIGHTING CONTROLLER, BASE MOUNTED, 480VOLT, 200AMP (DUAL)	EACH	1
LIGHT POLE, ALUMINUM, 47.5 FT. M.H., 15 FT. DAVIT ARM	EACH	31
LIGHT POLE FOUNDATION, METAL, 15" BOLT CIRCLE, 10" X 8'	EACH	31
BREAKAWAY DEVICE, TRANSFORMER BASE, 15 INCH BOLT CIRCLE	EACH	31
REMOVAL OF ELECTRIC SERVICE INSTALLATION	EACH	1
REMOVAL OF LIGHTING CONTROLLER FOUNDATION	EACH	1
REMOVAL OF HIGH MAST LUMINAIRES, SALVAGE	EACH	4
REMOVAL OF LIGHT TOWER, NO SALVAGE	EACH	2
REMOVAL OF TOWER FOUNDATION	EACH	2
LUMINAIRE SAFETY CABLE ASSEMBLY	EACH	31
MAINTENANCE OF LIGHTING SYSTEM	CAL MO	7

MODEL: D:\a\h\l
 FILE NAME: UG\101319\9\9\146601\Task-Order-11162\K56\04_CADD\CADD_Sheets\0162K56-rl-light-02.dgn



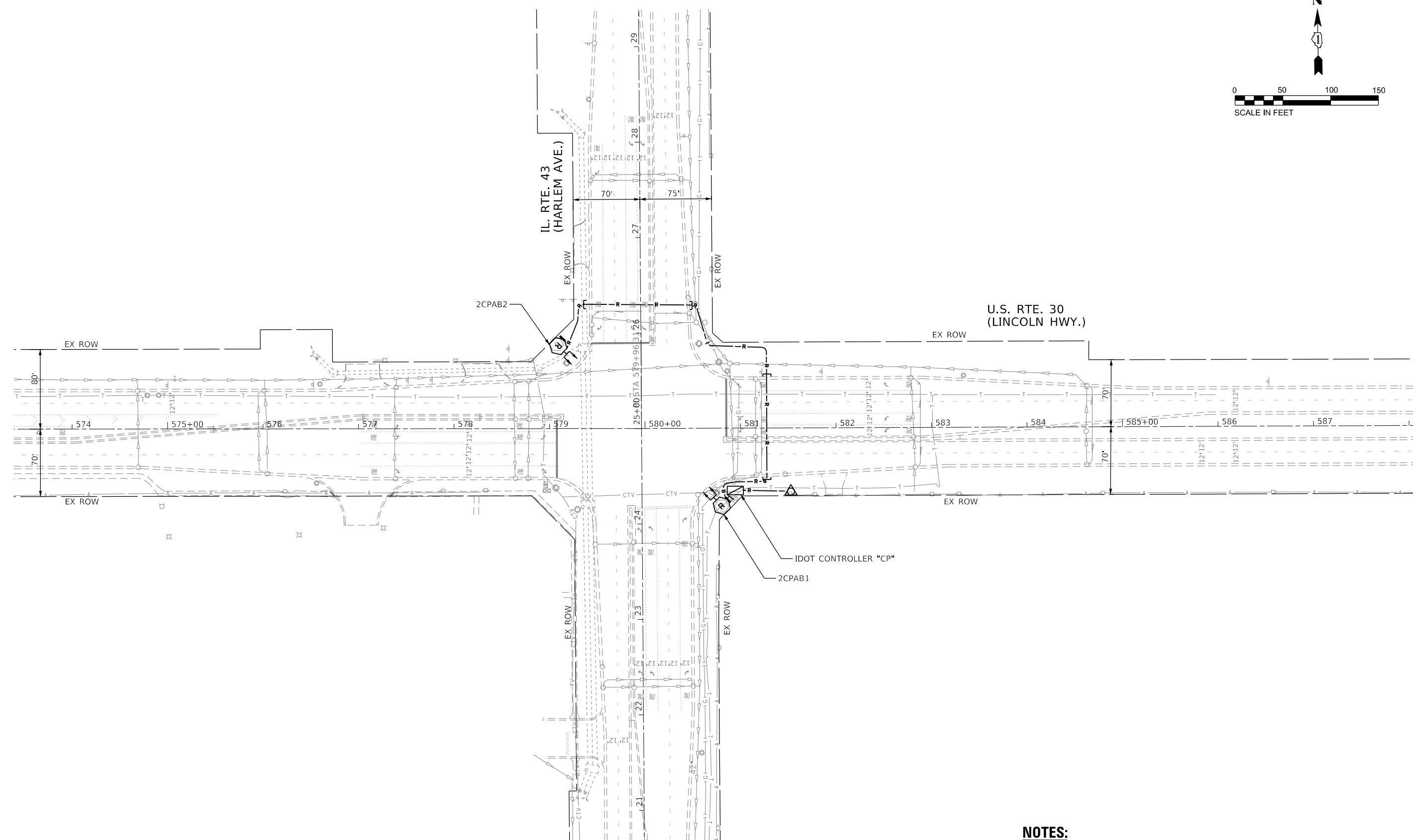
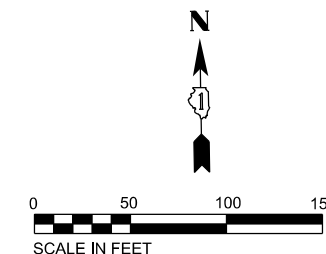
USER NAME = mgarvida	DESIGNED - MG/BN	REVISED -
PLOT SCALE = 2' / in.	DRAWN - UCM	REVISED -
PLOT DATE = 7/3/2019	CHECKED - RP	REVISED -
	DATE - 01/10/2020	REVISED -

**STATE OF ILLINOIS
DEPARTMENT OF TRANSPORTATION**

SCHEDULE OF QUANTITIES

SCALE: SHEET OF SHEETS STA. TO STA.

F.A.P. RTE.	SECTION	COUNTY	TOTAL SHEETS	SHEET NO.
0353	2019-183-L	COOK/WILL	22	8
CONTRACT NO. 62K56			ILLINOIS FED. AID PROJECT	



NOTES:

1. SEE SHEET LT-01 FOR LEGEND, ABBREVIATIONS, AND GENERAL NOTES.
2. EXISTING LIGHTING SYSTEM TO REMAIN OPERATIONAL UNTIL PROPOSED LIGHTING SYSTEM IS INSTALLED AND OPERATIONAL.

MODEL: Default
 FILE NAME: \\G:\01\19\03\146601\Task-Order\11062\K56\04_CADD\CADD_Sheets\0162K56-Plt\High-03.dgn



USER NAME = mgarvida	DESIGNED - MG/BN	REVISED -
PLOT SCALE = 99.9998 ' / in.	DRAWN - UCM	REVISED -
PLOT DATE = 7/3/2019	CHECKED - RP	REVISED -
	DATE - 01/10/2020	REVISED -

**STATE OF ILLINOIS
DEPARTMENT OF TRANSPORTATION**

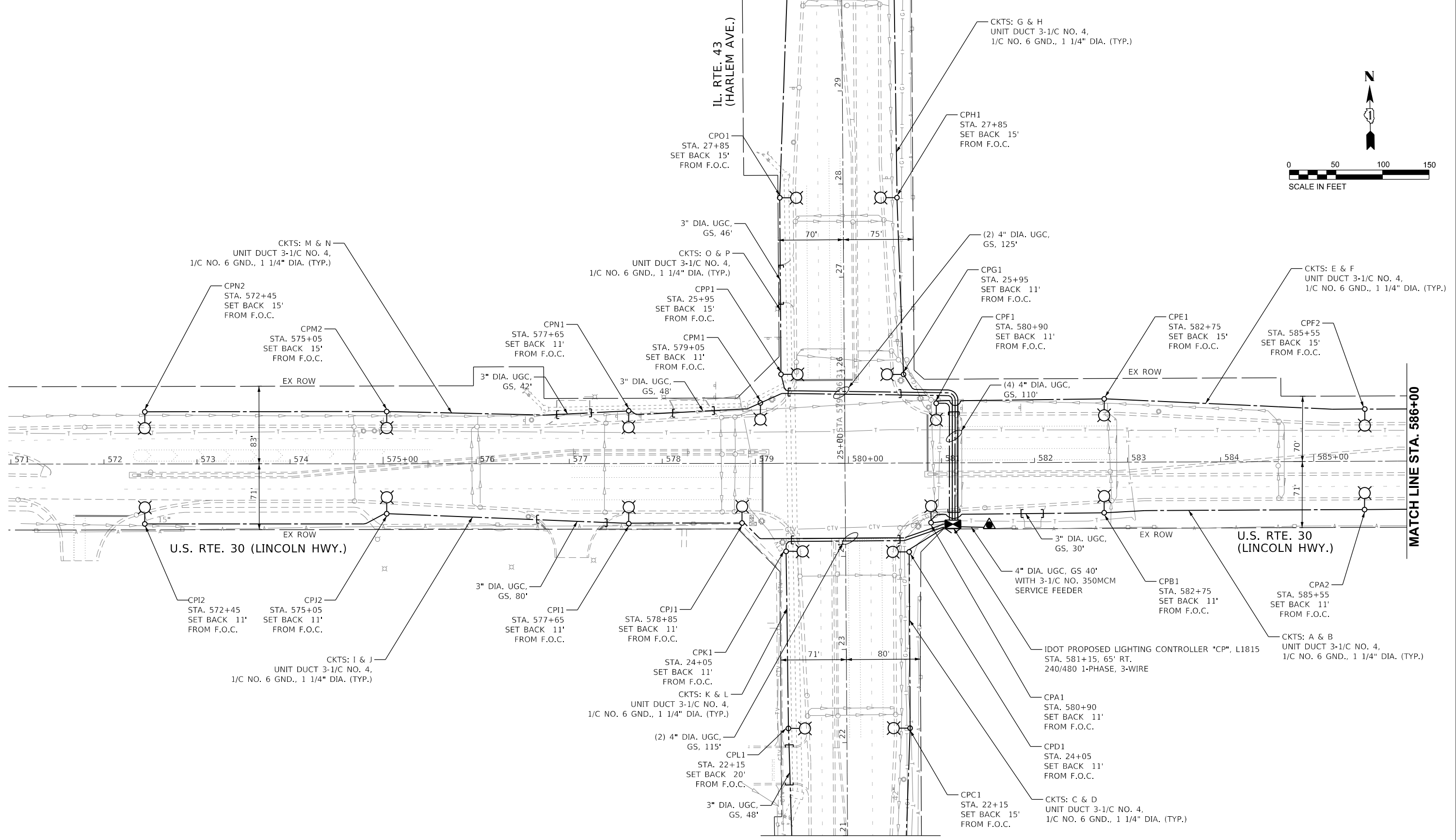
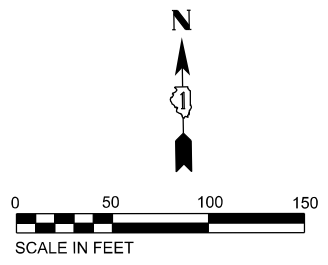
**EXISTING LIGHTING REMOVAL PLAN IL RTE 43
(HARLEM AVE) AT US RTE 30 (LINCOLN HWY)**

SCALE: SHEET OF SHEETS STA. TO STA.

F.A.P. RTE.	SECTION	COUNTY	TOTAL SHEETS	SHEET NO.
0353	2019-183-L	COOK/WILL	22	9
CONTRACT NO. 62K56				
ILLINOIS FED. AID PROJECT				

MATCH LINE STA. 30+00

IL. RTE. 43 (HARLEM AVE.)



MATCH LINE STA. 21+00

NOTES:

1. SEE SHEET LT-01 FOR LEGEND, ABBREVIATIONS, AND GENERAL NOTES.

LT-04

MODEL: Default
FILE NAME: \\G:\0319\0319\0319\148601\Task-Order\11062\K56\04_CADD\CADD_Sheets\11062\K56-Plt\Light-04.dgn



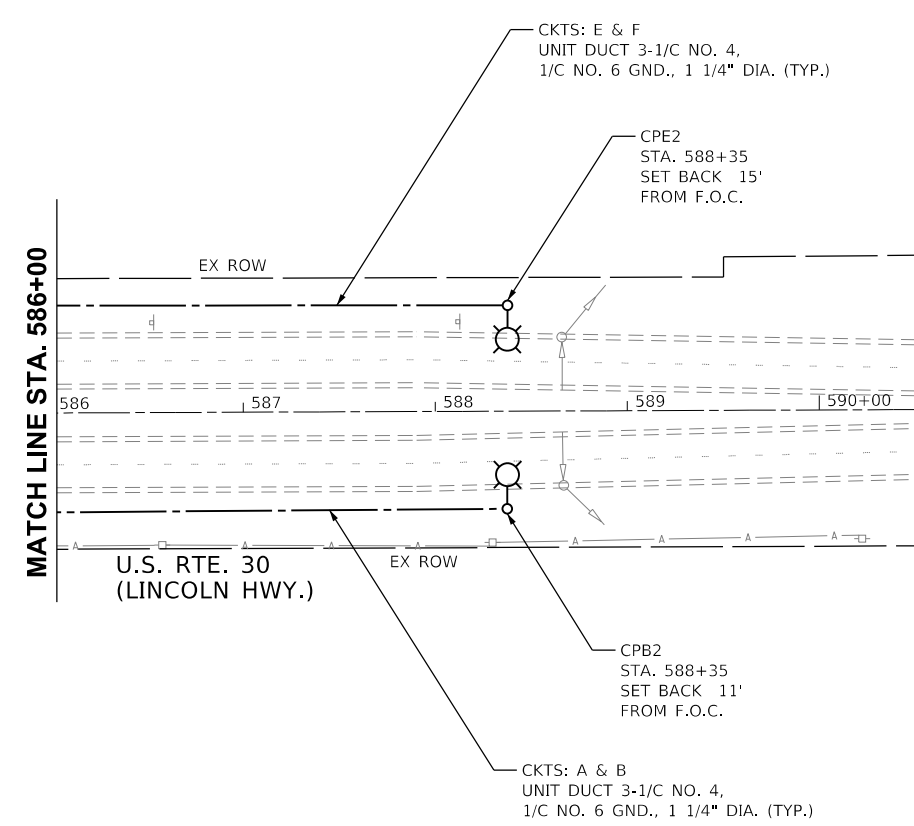
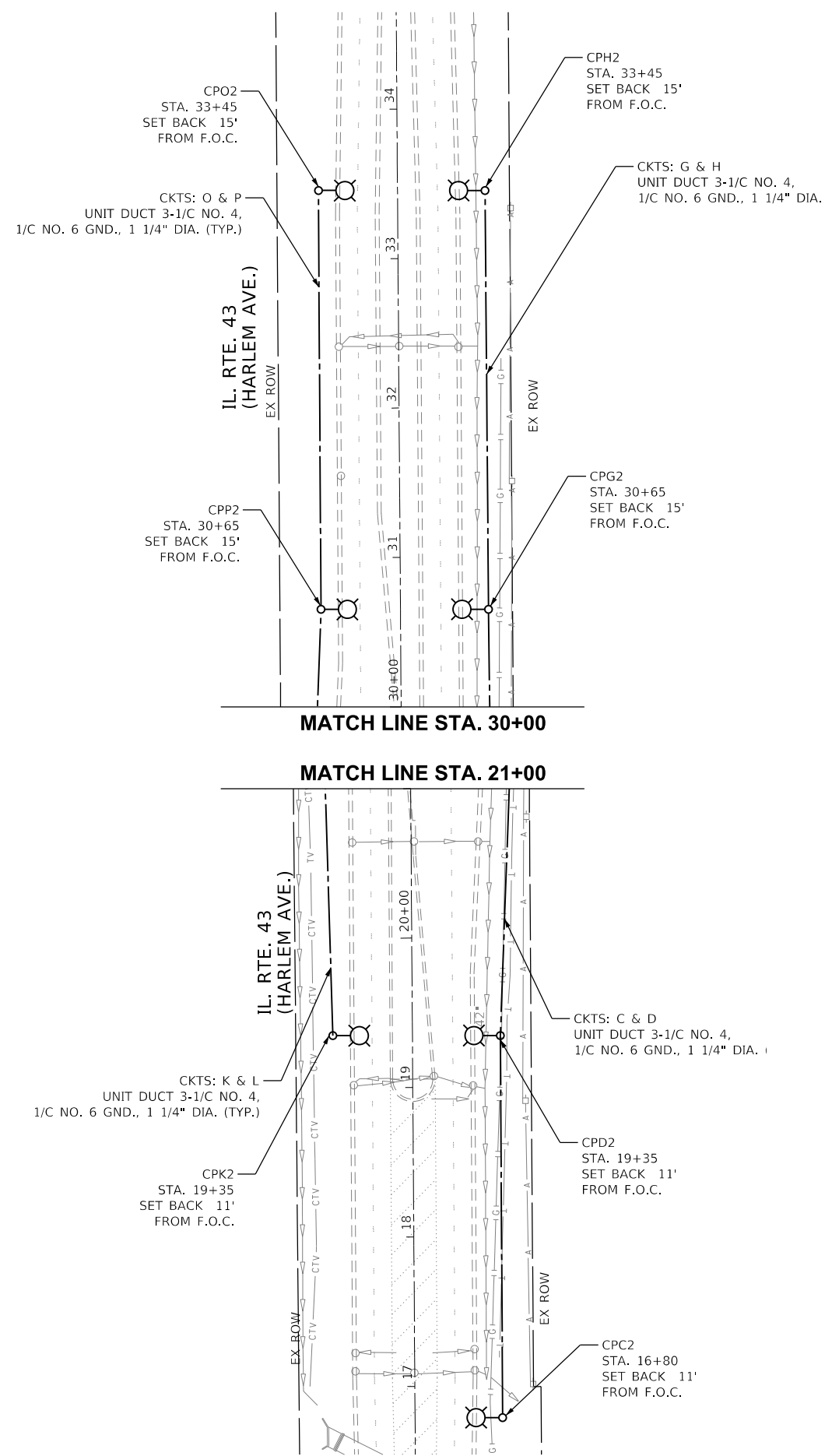
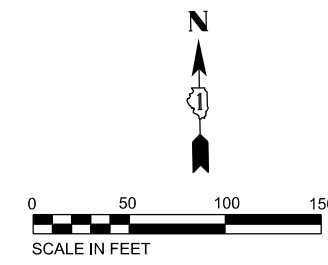
USER NAME = mgarvida	DESIGNED - MG/BN	REVISED -
PLOT SCALE = 99.9998 ' / in.	DRAWN - UCM	REVISED -
PLOT DATE = 7/3/2019	CHECKED - RP	REVISED -
	DATE - 01/10/2020	REVISED -

STATE OF ILLINOIS
DEPARTMENT OF TRANSPORTATION

PROPOSED LIGHTING PLAN (SHEET 1 OF 2)
IL RTE 43 (HARLEM AVE) AT US RTE 30 (LINCOLN HWY)

SCALE: SHEET OF SHEETS STA. TO STA.

F.A.P. RTE. 0353	SECTION 2019-183-L	COUNTY COOK/WILL	TOTAL SHEETS 22	SHEET NO. 10
ILLINOIS FED. AID PROJECT			CONTRACT NO. 62K56	



NOTES:

- SEE SHEET LT-01 FOR LEGEND, ABBREVIATIONS, AND GENERAL NOTES.

MODEL: Default
 FILE NAME: U:\01\19\03\146601\Task-Order\11062\K56\04_CADD\CADD_Sheets\11062\K56-Plt\High-05.dgn



USER NAME = mgarvida	DESIGNED - MG/BN	REVISED -
PLOT SCALE = 99.9998 ' / in.	DRAWN - UCM	REVISED -
PLOT DATE = 7/3/2019	CHECKED - RP	REVISED -
	DATE - 01/10/2020	REVISED -

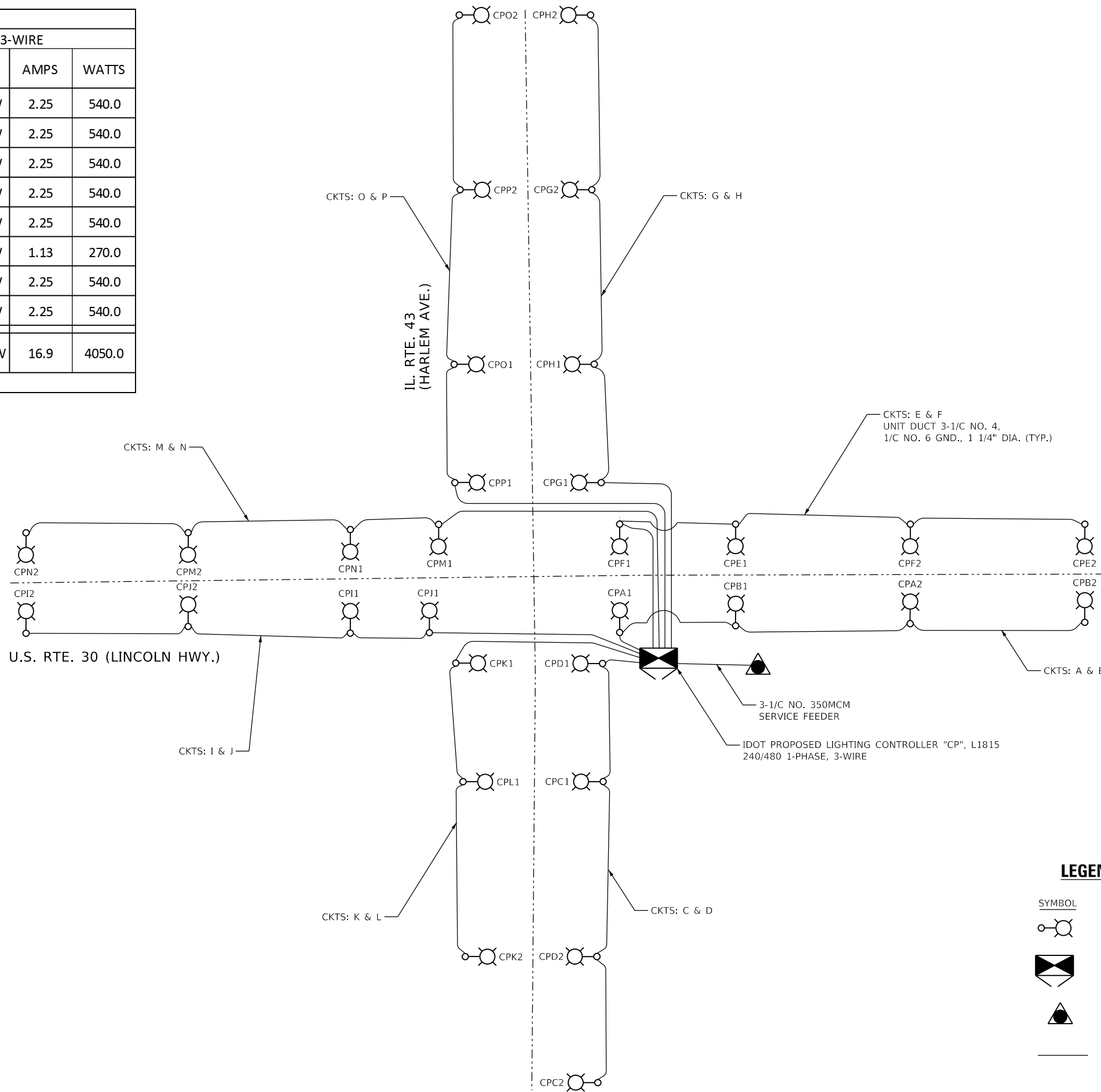
**STATE OF ILLINOIS
 DEPARTMENT OF TRANSPORTATION**

PROPOSED LIGHTING PLAN (SHEET 2 OF 2) IL RTE 43 (HARLEM AVE) AT US RTE 30 (LINCOLN HWY)			
SCALE:	SHEET	OF SHEETS	STA. TO STA.

F.A.P. RTE.	SECTION	COUNTY	TOTAL SHEETS	SHEET NO.
0353	2019-183-L	COOK/WILL	22	11
			CONTRACT NO. 62K56	
		ILLINOIS	FED. AID PROJECT	

LT-05

LOAD TABLE							
LIGHTING CONTROLLER 'CP', 240/480V, 1-Φ, 3-WIRE							
RED PHASE	NO. LU M. *	AMPS	WATTS	BLACK PHASE	NO. LUM. *	AMPS	WATTS
A	2-270W	2.25	540.0	B	2-270W	2.25	540.0
C	2-270W	2.25	540.0	D	2-270W	2.25	540.0
E	2-270W	2.25	540.0	F	2-270W	2.25	540.0
G	2-270W	2.25	540.0	H	2-270W	2.25	540.0
I	2-270W	2.25	540.0	J	2-270W	2.25	540.0
K	2-270W	2.25	540.0	L	1-270W	1.13	270.0
M	2-270W	2.25	540.0	N	2-270W	2.25	540.0
O	2-270W	2.25	540.0	P	2-270W	2.25	540.0
TOTAL	16-270W	18.0	4320.0	TOTAL	15-270W	16.9	4050.0
TOTAL CONNECTED LOAD CAPACITY:				8.37 KVA			



LEGEND

SYMBOL	DESCRIPTION
	PROPOSED IDOT LIGHTING UNIT
	LIGHTING CONTROLLER, 240/480 1-PHASE
	PROPOSED ELECTRIC UTILITY SERVICE
	UNIT DUCT

MODEL: Default; FILE NAME: \\0131909\035140601\Task-Order\11062\56\04_CADD\CADD_Sheets\11062\56-rl-light-06.dgn



USER NAME = mgarvida	DESIGNED - MG/BN	REVISED -
DRAWN - UCM	CHECKED - RP	REVISED -
PLOT SCALE = 99.9998 ' / in.	DATE - 01/10/2020	REVISED -
PLOT DATE = 7/3/2019		

STATE OF ILLINOIS
DEPARTMENT OF TRANSPORTATION

LIGHTING CONTROLLER "CP" WIRING DIAGRAM

SCALE:	SHEET	OF	SHEETS	STA.	TO	STA.
--------	-------	----	--------	------	----	------

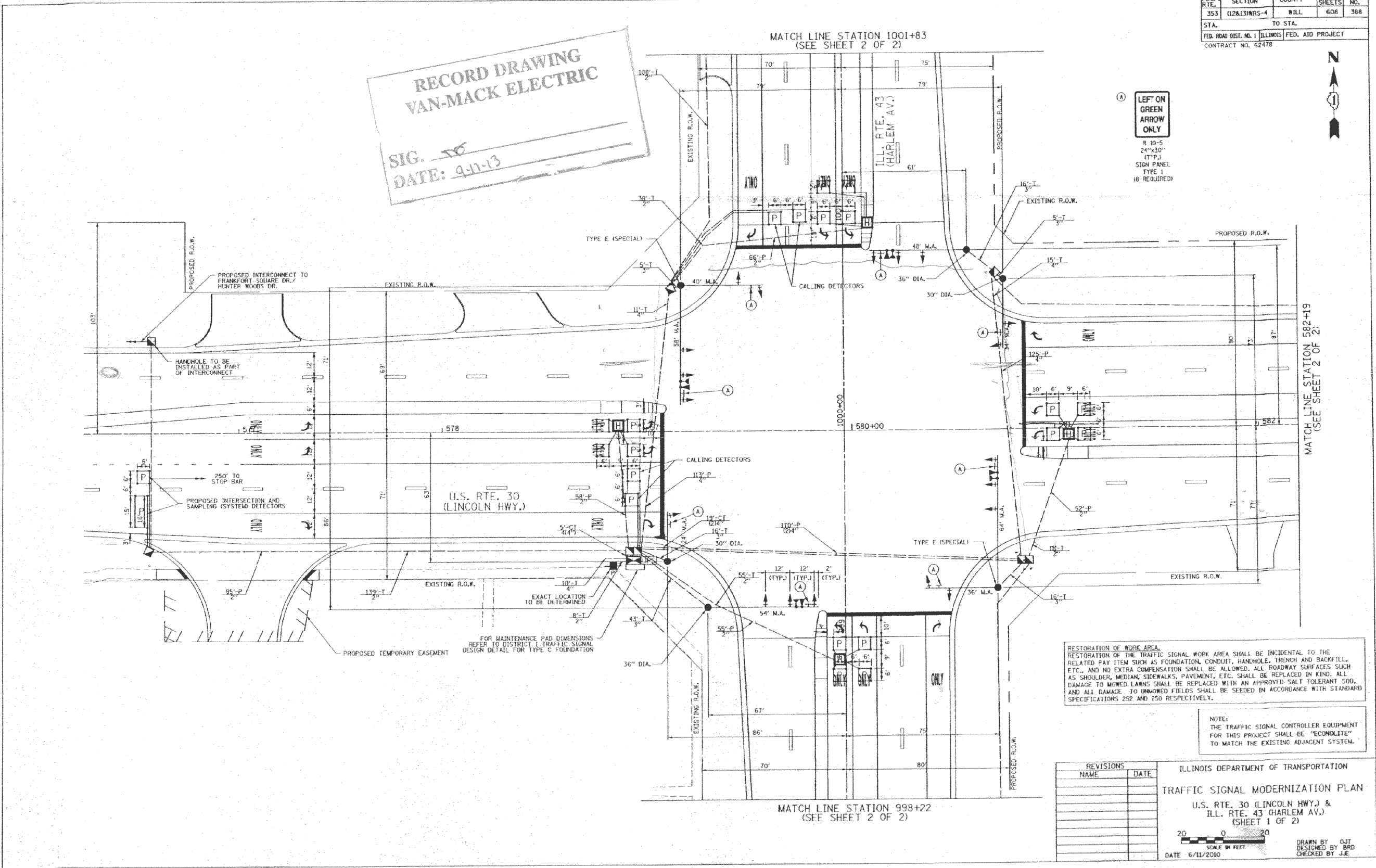
F.A.P. RTE.	SECTION	COUNTY	TOTAL SHEETS	SHEET NO.
0353	2019-183-L	COOK/WILL	22	12
CONTRACT NO. 62K56				
ILLINOIS FED. AID PROJECT				

LT-06

F.A.P. RTE.	SECTION	COUNTY	TOTAL SHEETS	SHEET NO.
353	(12&13)WRS-4	WILL	608	388
STA.		TO STA.		
FED. ROAD DIST. NO. 1		ILLINOIS	FED. AID PROJECT	
CONTRACT NO. 62478				

RECORD DRAWING
VAN-MACK ELECTRIC
 SIG. *TD*
 DATE: 9-11-13

LEFT ON GREEN ARROW ONLY
 R 10'-5"
 24"x30"
 (TYP.)
 SIGN PANEL
 TYPE 1
 (6 REQUIRED)



RESTORATION OF WORK AREA.
 RESTORATION OF THE TRAFFIC SIGNAL WORK AREA SHALL BE INCIDENTAL TO THE RELATED PAY ITEM SUCH AS FOUNDATION, CONDUIT, HANDHOLE, TRENCH AND BACKFILL, ETC., AND NO EXTRA COMPENSATION SHALL BE ALLOWED. ALL ROADWAY SURFACES SUCH AS SHOULDER, MEDIAN, SIDEWALKS, PAVEMENT, ETC. SHALL BE REPLACED IN KIND. ALL DAMAGE TO MOWED LAWNS SHALL BE REPLACED WITH AN APPROVED SALT TOLERANT SOD, AND ALL DAMAGE TO UNMOWED FIELDS SHALL BE SEEDING IN ACCORDANCE WITH STANDARD SPECIFICATIONS 252 AND 250 RESPECTIVELY.

NOTE:
 THE TRAFFIC SIGNAL CONTROLLER EQUIPMENT FOR THIS PROJECT SHALL BE "ECONOLITE" TO MATCH THE EXISTING ADJACENT SYSTEM.

REVISIONS	NAME	DATE

ILLINOIS DEPARTMENT OF TRANSPORTATION
TRAFFIC SIGNAL MODERNIZATION PLAN
 U.S. RTE. 30 (LINCOLN HWY.) &
 ILL. RTE. 43 (HARLEM AV.)
 (SHEET 1 OF 2)
 SCALE IN FEET
 DATE 6/11/2010
 DRAWN BY: DJT
 DESIGNED BY: BRD
 CHECKED BY: JJE

FOR INFORMATION ONLY

MODEL: Default
 FILE NAME: \\0101P090001\406601\Task-Order\1106245604_CADD\CADD_Sheets\11062456-PL-Right-02.dwg



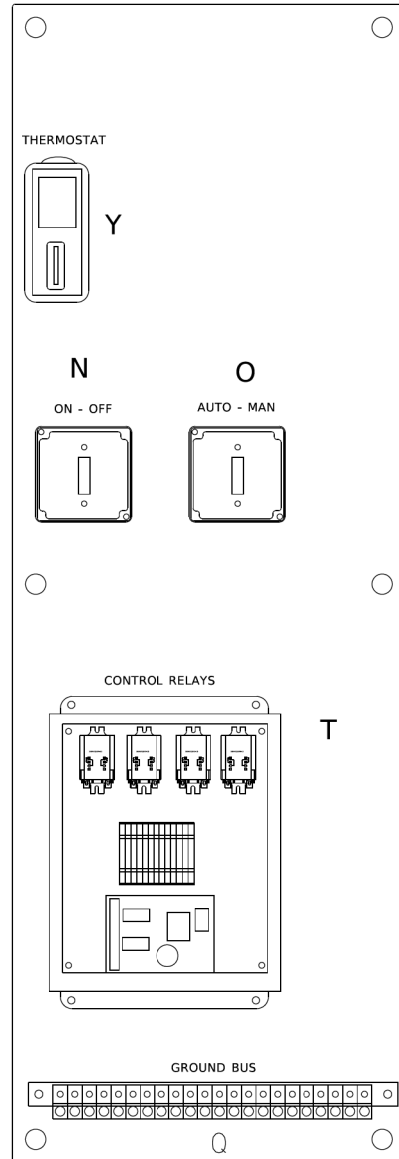
USER NAME = mgarvida	DESIGNED - MG/BN	REVISED -
PLOT SCALE = 2" = 1' in.	DRAWN - UCM	REVISED -
PLOT DATE = 7/3/2019	CHECKED - RP	REVISED -
	DATE - 01/10/2020	REVISED -

STATE OF ILLINOIS
 DEPARTMENT OF TRANSPORTATION

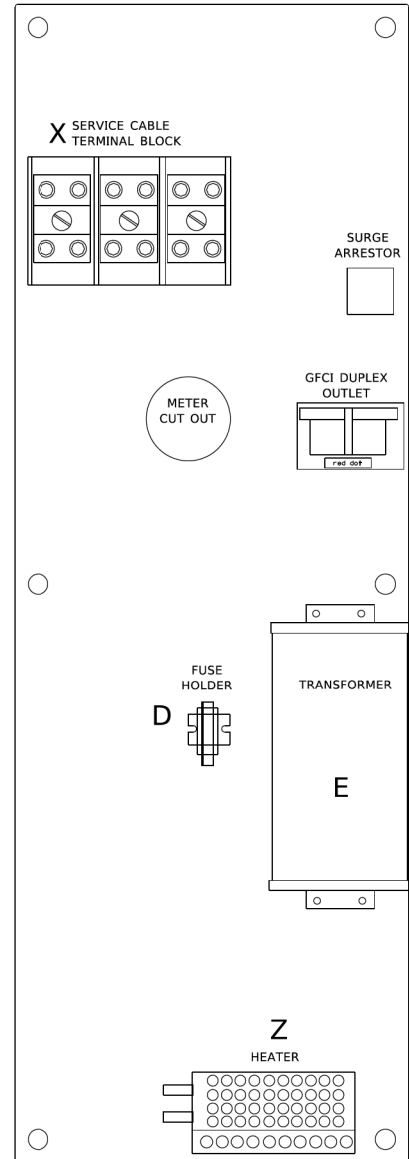
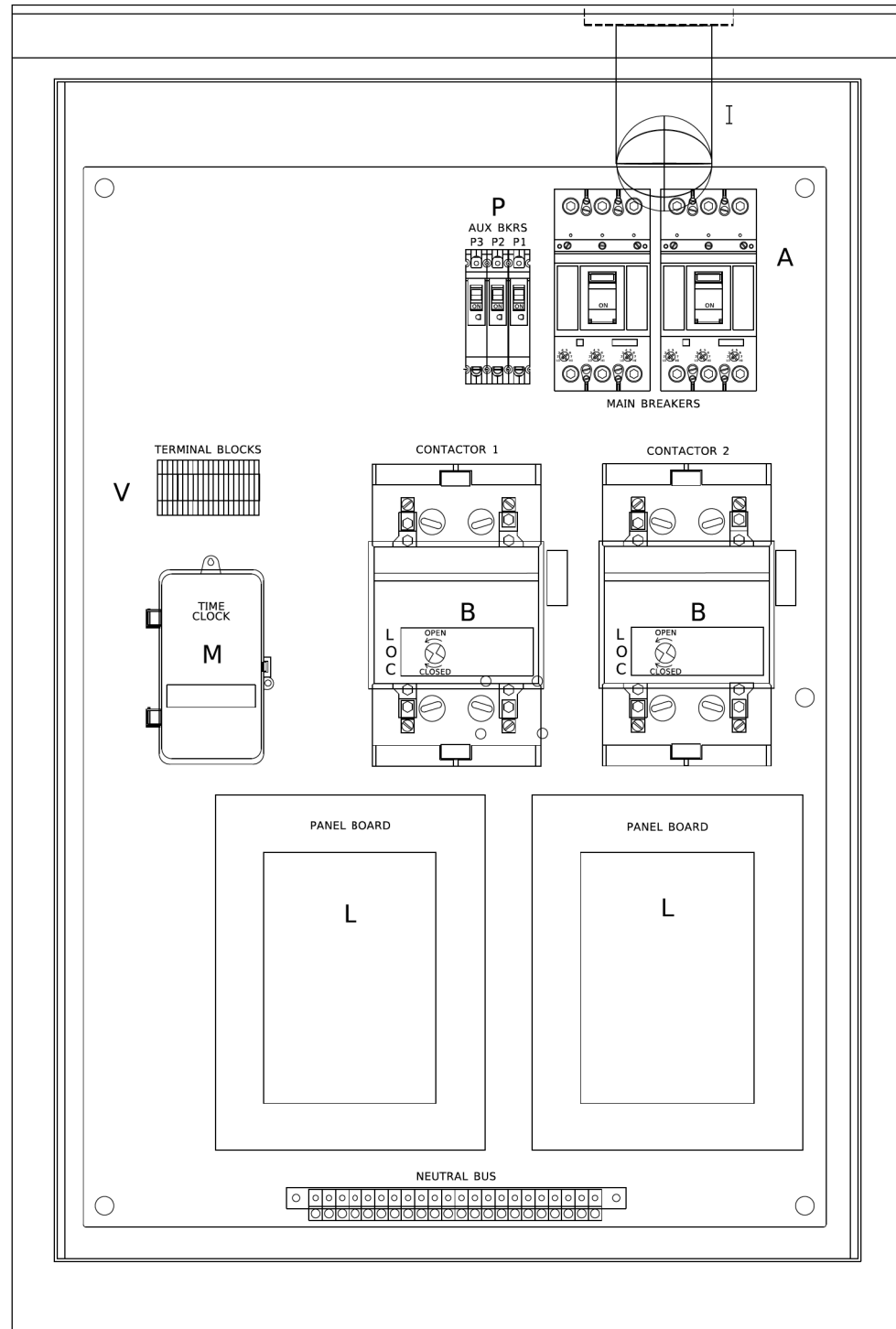
EXISTING TRAFFIC SIGNAL PLANS
 IL RTE 43 (HARLEM AVE) AT US RTE 30 (LINCOLN HWY.)
 SCALE: SHEET OF SHEETS STA. TO STA.

F.A.P. RTE.	SECTION	COUNTY	TOTAL SHEETS	SHEET NO.
0353	2019-183-L	COOK/WILL	22	13
CONTRACT NO. 62K56				
ILLINOIS FED. AID PROJECT				

LT-07



LEFT SIDE PANEL



RIGHT SIDE PANEL

BILL OF MATERIALS		
ITEM *	QTY	DESCRIPTION
A	2	MAIN BREAKERS 2 POLE 200 AMP WITH AUX CONTACT
B	2	MECHANICAL CONTRACTOR 2 POLE 200 AMP 240V COIL WITH AUX CONTACTS
D	1	SECTIONAL FUSE HOLDER
E	1	2.0 KVA 277V-240/120 TRASFORMER
G	1	15 AMP GFCI
H	2	DOOR SWITCH
I	1	LIGHT FIXTURE
J	1	METER FITTING 1 PHASE 3 WIRE 200 AMP
K	1	SURGE ARRESTER
L	2	PANEL BOARD 480/240V 1 PHASE, 250 AMP COPPER BUS
M	1	2 CHANNEL DIGITAL TIME CLOCK
N	1	MOMENTARY SWITCH ON - OF
O	1	DPDT 20 AMP AUTO-MANUAL
P1	1	BREAKER 1P 15A
P2	1	BREAKER 1P 15A
P3	1	BREAKER 1P 15A
Q	2	COPPER GROUND AND NEUTRAL BUS 1 X 16 X ¼
T	1	CONTROL RELAY ASSEMBLY 240V COILS WITH DPDT 25 AMP RELAYS (R1,R2,R3,R4). MOMENTARY CONTACT ADAPTER. QTY 12 TERMINAL BLOCKS
V	20	TERMINAL BLOCKS
X	1	62C AMP SPLICE BLOCK
Y	1	CHROMALOX WR 80, 40-80 DEG THERMOSTAT
Z	1	HEATREX 276-10 375 WATT HEATER

*

MODEL: Default
 FILE NAME: \\0101P09\03\140601\Task_Order_11162\K56\04_CADD\CADD_Sheets\ID162\K56-Fit-Right-08.dgn
 MODEL: Default
 FILE NAME: \\0101P09\03\140601\Task_Order_11162\K56\04_CADD\CADD_Sheets\ID162\K56-Fit-Right-08.dgn

USER NAME = footem	DESIGNED -	REVISED - R. TOMSONS 03-29-12
PLOT SCALE = 50.0000' / in.	DRAWN - CADD	REVISED -
PLOT DATE = 4/19/2019	CHECKED -	REVISED -
	DATE - 12-18-02	REVISED -

**STATE OF ILLINOIS
DEPARTMENT OF TRANSPORTATION**

**LIGHTING CONTROLLER, BASE MOUNTED
480 VOLT, 200 AMP, (DUAL)**

SCALE: NONE SHEET 1 OF 4 SHEETS STA. TO STA.

F.A.P. RTE.	SECTION	COUNTY	TOTAL SHEETS	SHEET NO.
0353	2019-183-L	COOK/WILL	22	14
E-200 (BE-200)			CONTRACT NO.	
ILLINOIS FED. AID PROJECT				

E-200

MODEL: Default
 FILE NAME: \\0101P09\03\140601\Task_Order_11162\K56\04_CADD\CADD_Sheets\ID162\K56-Fit-Right-08.dgn

SINGH
SINGH + ASSOCIATES INC.
CONSULTING ENGINEERS

USER NAME = mgarvida	DESIGNED - MG/BN	REVISED -
PLOT SCALE = 2' / in.	DRAWN - UCM	REVISED -
PLOT DATE = 7/3/2019	CHECKED - RP	REVISED -
	DATE - 01/10/2020	REVISED -

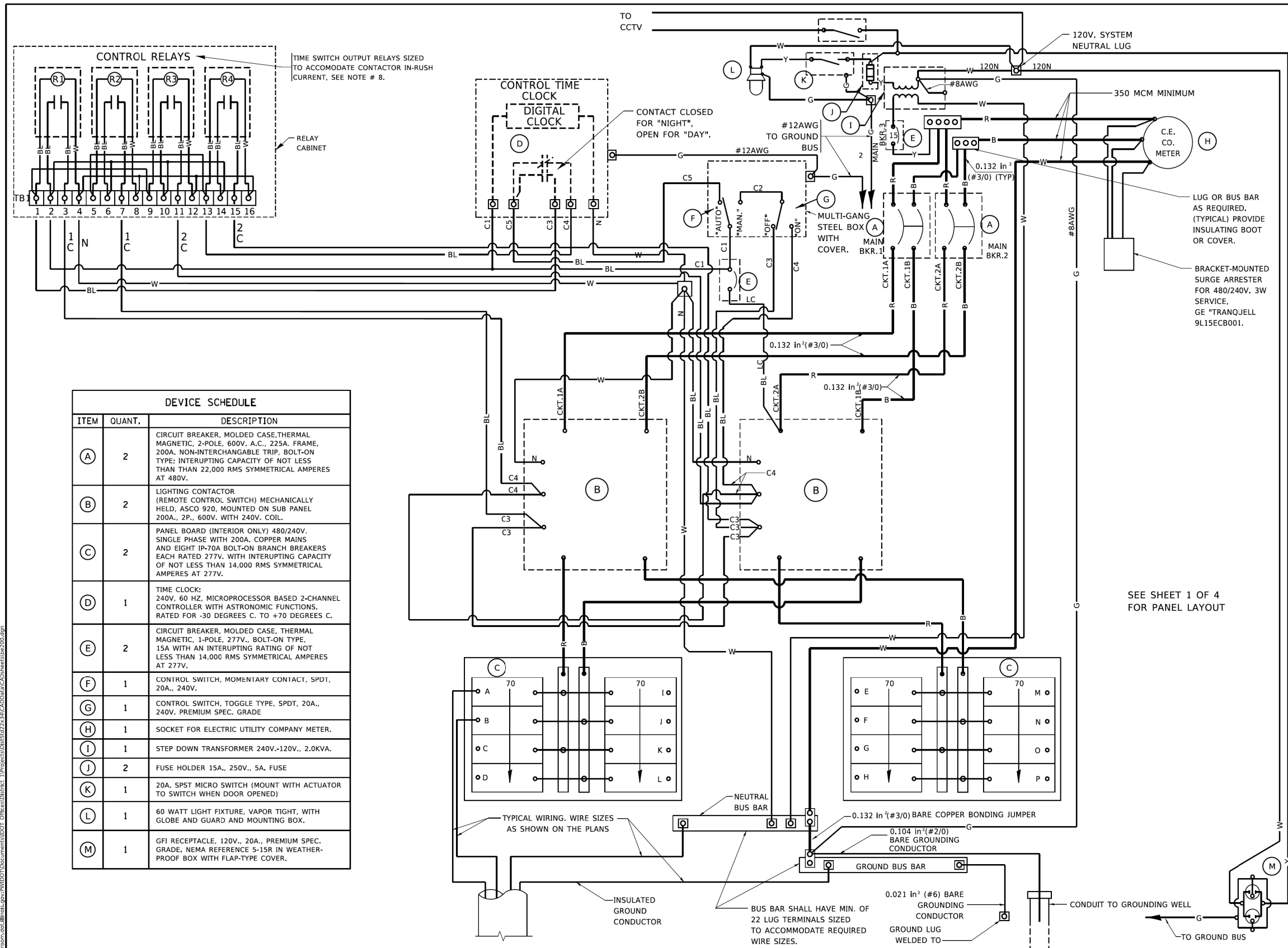
**STATE OF ILLINOIS
DEPARTMENT OF TRANSPORTATION**

IDOT D1-BUREAU OF ELECTRICAL STANDARD DETAILS (TYP.)

SCALE: SHEET OF SHEETS STA. TO STA.

F.A.P. RTE.	SECTION	COUNTY	TOTAL SHEETS	SHEET NO.
0353	2019-183-L	COOK/WILL	22	14
E-200 (BE-200)			CONTRACT NO. 62K56	
ILLINOIS FED. AID PROJECT				

LT-08



DEVICE SCHEDULE		
ITEM	QUANT.	DESCRIPTION
(A)	2	CIRCUIT BREAKER, MOLDED CASE, THERMAL MAGNETIC, 2-POLE, 600V. A.C., 225A. FRAME, 200A. NON-INTERCHANGABLE TRIP, BOLT-ON TYPE; INTERRUPTING CAPACITY OF NOT LESS THAN 22,000 RMS SYMMETRICAL AMPERES AT 480V.
(B)	2	LIGHTING CONTACTOR (REMOTE CONTROL SWITCH) MECHANICALLY HELD, ASCO 920, MOUNTED ON SUB PANEL 200A., 2P., 600V. WITH 240V. COIL.
(C)	2	PANEL BOARD (INTERIOR ONLY) 480/240V. SINGLE PHASE WITH 200A. COPPER MAINS AND EIGHT IP-70A BOLT-ON BRANCH BREAKERS EACH RATED 277V. WITH INTERRUPTING CAPACITY OF NOT LESS THAN 14,000 RMS SYMMETRICAL AMPERES AT 277V.
(D)	1	TIME CLOCK: 240V, 60 HZ, MICROPROCESSOR BASED 2-CHANNEL CONTROLLER WITH ASTRONOMIC FUNCTIONS. RATED FOR -30 DEGREES C. TO +70 DEGREES C.
(E)	2	CIRCUIT BREAKER, MOLDED CASE, THERMAL MAGNETIC, 1-POLE, 277V., BOLT-ON TYPE, 15A WITH AN INTERRUPTING RATING OF NOT LESS THAN 14,000 RMS SYMMETRICAL AMPERES AT 277V.
(F)	1	CONTROL SWITCH, MOMENTARY CONTACT, SPDT, 20A., 240V.
(G)	1	CONTROL SWITCH, TOGGLE TYPE, SPDT, 20A., 240V. PREMIUM SPEC. GRADE
(H)	1	SOCKET FOR ELECTRIC UTILITY COMPANY METER.
(I)	1	STEP DOWN TRANSFORMER 240V.-120V., 2.0KVA.
(J)	2	FUSE HOLDER 15A., 250V., 5A. FUSE
(K)	1	20A. SPST MICRO SWITCH (MOUNT WITH ACTUATOR TO SWITCH WHEN DOOR OPENED)
(L)	1	60 WATT LIGHT FIXTURE, VAPOR TIGHT, WITH GLOBE AND GUARD AND MOUNTING BOX.
(M)	1	GFI RECEPTACLE, 120V., 20A., PREMIUM SPEC. GRADE, NEMA REFERENCE 5-15R IN WEATHER-PROOF BOX WITH FLAP-TYPE COVER.

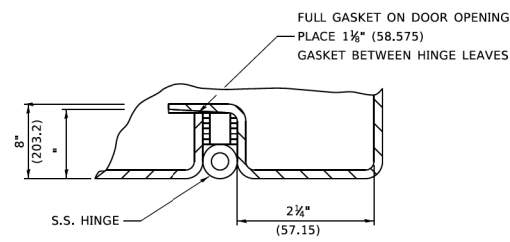
- NOTES:**
1. ALL CONTROL CABINET ITEMS SHALL HAVE SUITABLE IDENTIFICATION. OPEN CIRCUIT BREAKERS, CONTACTORS AND OTHER OPEN DEVICES SHALL HAVE PERMANENT SELF STICKING TAGS. DEVICES IN ENCLOSURES SHALL HAVE ENGRAVED 2-COLOR LAMINATED PLASTIC NAMEPLATES ATTACHED TO ENCLOSURES WITH SCREWS. NAMEPLATES SHALL BE ENGRAVED TO CORRESPOND TO DESIGNATIONS ON THE DRAWINGS. INTERNAL CABINET WIRING SHALL BE IDENTIFIED AS INDICATED OR AS DIRECTED BY THE ENGINEER BY MEANS OF SELF-STICKING TAGS APPLIED AT EACH CONNECTED END. IDENTIFICATION SHALL BE MADE BY THE CABINET MANUFACTURER.
 2. ALL WIRING WITHIN THE CABINET SHALL BE COLOR CODED AS INDICATED.
R = RED Y = YELLOW
B = BLACK W = WHITE
BL = BLUE G = GREEN
 3. PROVIDE SEALING GROMMETS FOR ALL OPEN WIRING EXTENDED FROM DEVICES IN BOXES OR CABINETS WITHIN THE CONTROL CABINET.
 4. ALL 120 VOLT SYSTEM AND ALL CONTROL WIRING SHALL BE #12AWG STRANDED UNLESS OTHERWISE INDICATED.
 5. ALL WIRING SHALL BE NEATLY DRESSED AND SUPPORTED.
 6. THE CONTROLLER SHALL BE CONSTRUCTED TO U.L. STD. 508 AND BEAR THE U.L. LABEL "ENCLOSED INDUSTRIAL CONTROL PANEL"
 7. SEE CABINET AND FOUNDATION DETAIL SHEET FOR SCHEMATIC DIAGRAM AND DEVICE LAYOUT.
 8. CONTROL RELAYS CAN BE ELIMINATED IF THE CONTROL TIME CLOCK OUTPUT CONTACTS ARE RATED FOR CONTACTOR INRUSH CURRENT.

MODEL: Default
FILE NAME: \\0101P09\c31140601\Task_Order_11062456\04_CADD\CADD_Sheets\11062456-11062456-09.dgn
PROJECT: \\0101P09\c31140601\Task_Order_11062456\04_CADD\CADD_Sheets\11062456-11062456-09.dgn

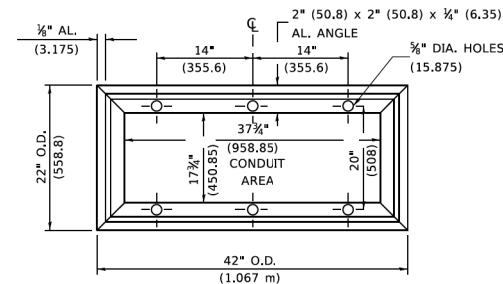
USER NAME = footem	DESIGNED - G. BRATKIV	REVISED - M. BURNS 07-25-91	STATE OF ILLINOIS DEPARTMENT OF TRANSPORTATION				LIGHTING CONTROLLER, BASE MOUNTED				F.A. RTE.	SECTION	COUNTY	TOTAL SHEETS	SHEET NO.
PLOT SCALE = 50,000' / in.	CHECKED -	REVISED - S. MANLEY 10-11-93					480 VOLT, 200 AMP, (DUAL)				E-200 (BE-200)				
PLOT DATE = 4/19/2019	DATE - 06-30-86	REVISED - R. TOMSONS 03-29-12													
												ILLINOIS FED. AID PROJECT			

USER NAME = mgarvida	DESIGNED - MG/BN	REVISED -	STATE OF ILLINOIS DEPARTMENT OF TRANSPORTATION				IDOT D1-BUREAU OF ELECTRICAL STANDARD DETAILS (TYP.)				F.A.P. RTE.	SECTION	COUNTY	TOTAL SHEETS	SHEET NO.
PLOT SCALE = 2' / in.	CHECKED - RP	REVISED -									0353 2019-183-L COOK/WILL 22 15				
PLOT DATE = 7/3/2019	DATE - 01/10/2020	REVISED -													
												ILLINOIS FED. AID PROJECT			

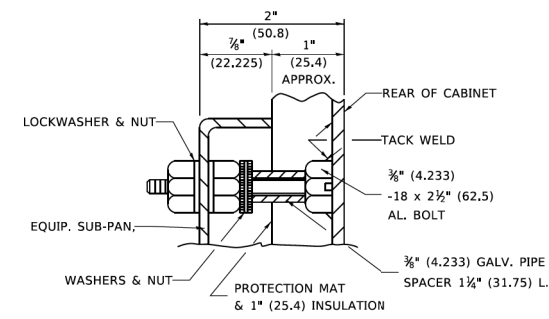




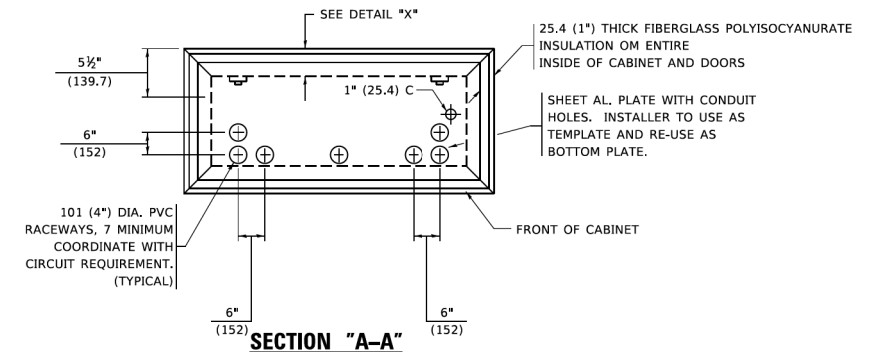
DETAIL "Y"



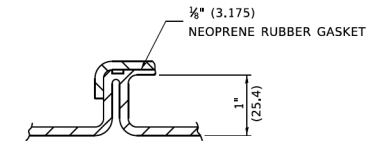
BASE MTG. DETAIL



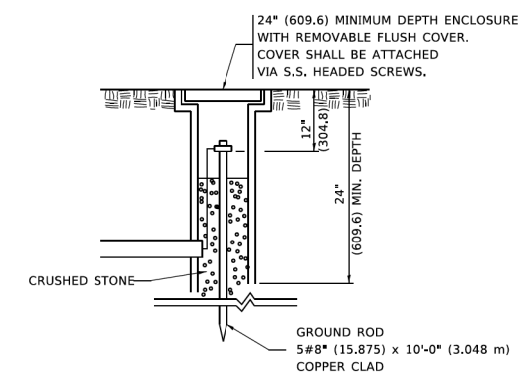
DETAIL "X"



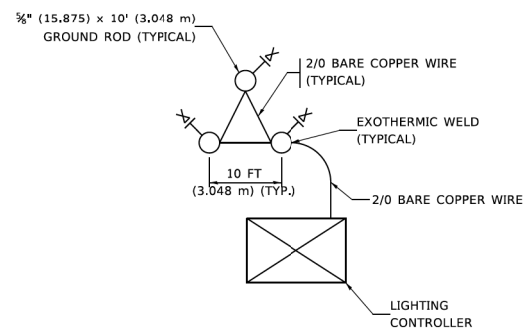
SECTION "A-A"



DETAIL "Z"



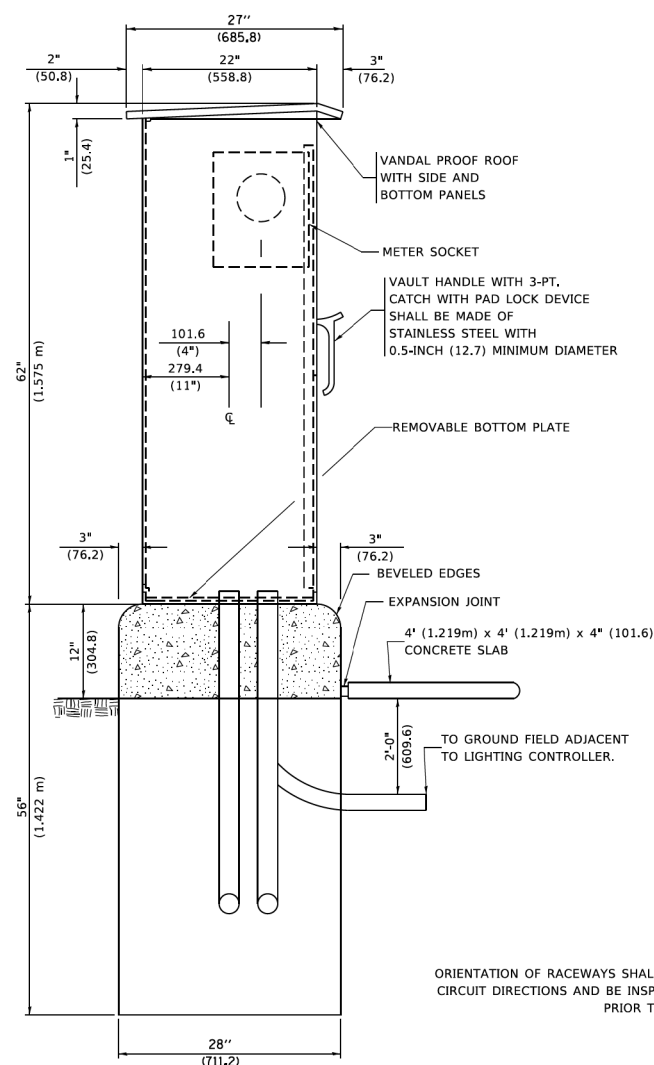
GROUND WELL DETAIL



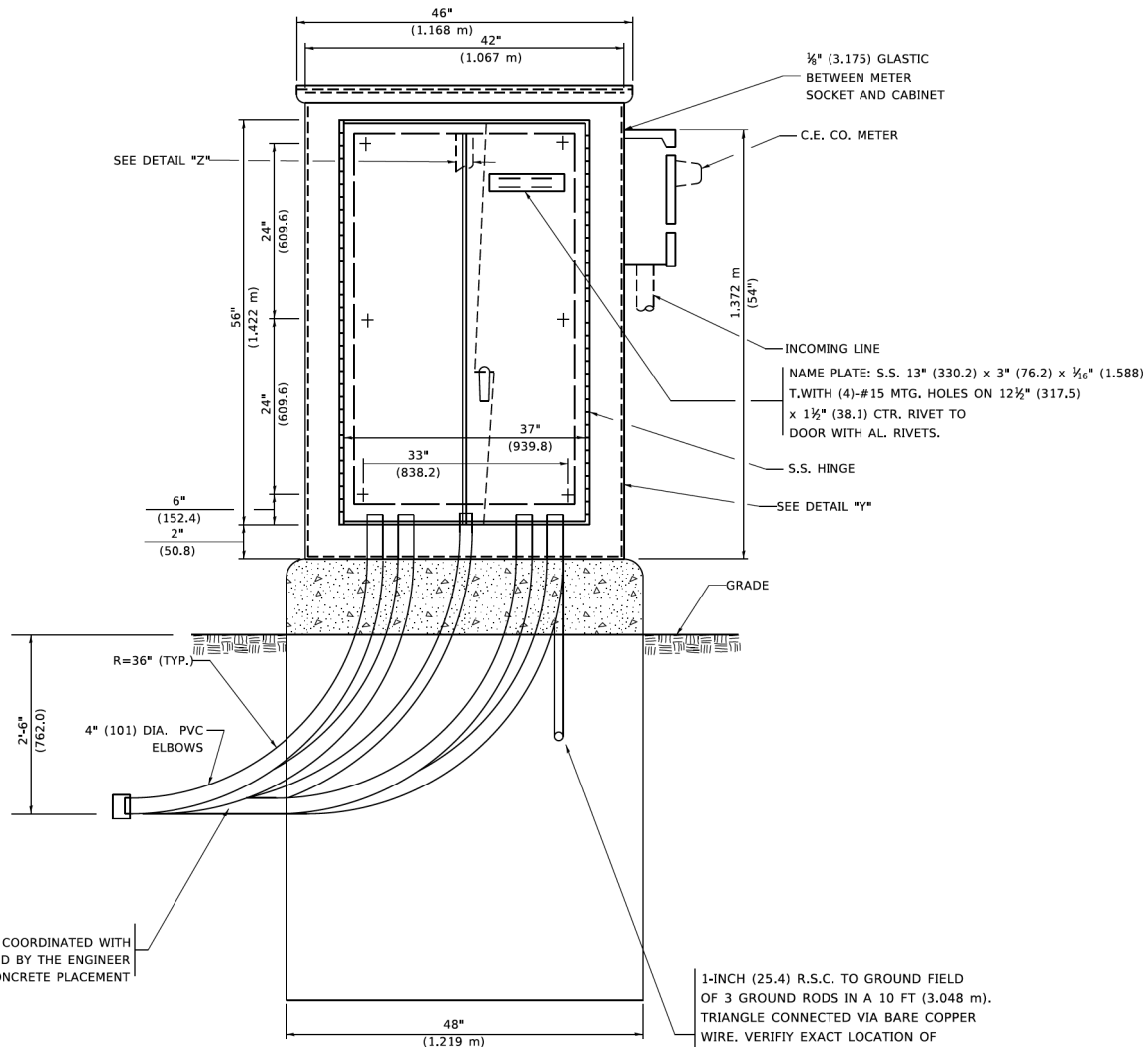
GROUND FIELD DETAIL

(N.T.S.)

THE CONTRACTOR SHALL VERIFY EXACT LOCATION WITH THE ENGINEER



LEFT SIDE ELEVATION



FRONT ELEVATION

ORIENTATION OF RACEWAYS SHALL BE COORDINATED WITH CIRCUIT DIRECTIONS AND BE INSPECTED BY THE ENGINEER PRIOR TO CONCRETE PLACEMENT

1-INCH (25.4) R.S.C. TO GROUND FIELD OF 3 GROUND RODS IN A 10 FT (3.048 m) TRIANGLE CONNECTED VIA BARE COPPER WIRE. VERIFY EXACT LOCATION OF GROUND FIELD WITH THE ENGINEER. NO GROUND WELL SHALL BE PLACED IN CONCRETE PAD IN FRONT OF CONTROLLER.

MODEL: Default
FILE NAME: \\0101309\csc\140601\Task-Order_11062\K56\04_CADD\CADD_Sheets\IDOT_Documents\IDOT_Offices\Bldg11\Projects\ID18522\314\CADD\Main\Cabinets\lnk200.dgn

USER NAME = footemj	DESIGNED -	REVISED - R. TOMSONS 03-29-12
PLOT SCALE = 50,0000' / in.	DRAWN - CADD	REVISED -
PLOT DATE = 4/19/2019	CHECKED -	REVISED -
	DATE - 12-18-02	REVISED -

STATE OF ILLINOIS DEPARTMENT OF TRANSPORTATION	
LIGHTING CONTROLLER, BASE MOUNTED 480 VOLT, 200 AMP, (DUAL)	
SCALE: NONE	SHEET 3 OF 4 SHEETS STA. TO STA.

F.A. RTE.	SECTION	COUNTY	TOTAL SHEETS	SHEET NO.
E-200 (BE-200)			CONTRACT NO.	
ILLINOIS FED. AID PROJECT				

E-200

MODEL: Default
FILE NAME: \\0101309\csc\140601\Task-Order_11062\K56\04_CADD\CADD_Sheets\IDOT_Documents\IDOT_Offices\Bldg11\Projects\ID18522\314\CADD\Main\Cabinets\lnk200.dgn

SINGH
SINGH & ASSOCIATES INC.
CONSULTING ENGINEERS

USER NAME = mgarvida	DESIGNED - MG/BN	REVISED -
PLOT SCALE = 2' / in.	DRAWN - UCM	REVISED -
PLOT DATE = 7/3/2019	CHECKED - RP	REVISED -
	DATE - 01/10/2020	REVISED -

STATE OF ILLINOIS DEPARTMENT OF TRANSPORTATION	
IDOT D1-BUREAU OF ELECTRICAL STANDARD DETAILS (TYP.)	
SCALE:	SHEET OF SHEETS STA. TO STA.

F.A.P. RTE.	SECTION	COUNTY	TOTAL SHEETS	SHEET NO.
0353	2019-183-L	COOK/WILL	22	16
E-200 (BE-200)			CONTRACT NO. 62K56	
ILLINOIS FED. AID PROJECT				

LT-10

NOTES:

1. CABINET SHALL BE FABRICATED FROM 0.125-INCH (3.175) SHEET ALUMINUM #3003H14, FORMED AND ARC WELDED ASSEMBLY.
2. ALL SCREWS AND HARDWARE SHALL BE PLATED, GALVANIZED, OR MADE OF BRASS, ALUMINUM OR STAINLESS STEEL.
3. NAME PLATE SHALL HAVE ENGRAVED 0.75-INCH (19.05) HIGH LETTERS FILLED IN BLACK: "STATE OF ILLINOIS LIGHTING CONTROLS" UNLESS OTHERWISE SPECIFIED.
4. ONE INCH THICK POLYISOCYANURATE INSULATION SHALL BE INSTALL AND PERMANENTLY CEMENTED ON ALL SIDES OF THE CABINET AND DOORS.
5. CABINET SHALL BE PRIMED AND PAINTED AS SPECIFIED.
6. ELECTRIC UTILITY METER BOX SHALL BE MOUNTED ON THE SIDE OF CONTROL CABINET AS SHOWN ON THE PANEL LAYOUT DIAGRAM.
7. THE COMPLETED CONTROLLER SHALL BE U.L. LISTED AS AN INDUSTRIAL CONTROL PANEL UNDER UL508.
8. METAL MOUNTING PANEL SHALL BE #10 GAUGE GALVANIZED SHEET STEEL FLANGED BACK 0.75-INCHES I.D. ON 4 SIDES.
9. CIRCUIT BREAKERS AND CONTACTORS AND OTHER COMPONENTS SHALL BE MOUNTED ON 0.125-INCH (3.175) THICK GLASTIC INSULATION BACK PANEL.
10. ALL DEVICES SHALL BE FRONT REMOVABLE.
11. TIME CLOCK CHANNEL 1 N.O. CONTACT IS CLOSED NIGHT AND OPEN DAY.
12. SET "ON TIME" TO 30 MINUTES AFTER ASTRONOMICAL SUNSET.
13. BUS BAR SHALL HAVE 22 LUG TERMINALS SIZED TO ACCOMMODATE REQUIRED WIRE SIZES. NEUTRAL BUS SHALL BE PAINTED WHITE. GROUND BUS SHALL BE PAINTED GREEN.
14. ALL LUGS SHALL BE OF COPPER SCREWS AND CONNECTORS, SPRING HELD.
15. ALL WIRING TERMINATIONS SHALL BE RATED NOT LESS THAN 75 DEGREE CENTIGRADE.
16. ALL CONTROL WIRING SHALL BE 600V MACHINE TOOL WIRE TYPE MTW.
17. ALL POWER WIRING SHALL BE 600V TYPE RHH/RHW.
18. ALL WIRING WITHIN THE CABINET SHALL BE COLOR CODED AS INDICATED:

R - RED	Y - YELLOW
B - BLACK	W - WHITE
BL - BLUE	G - GREEN
19. ALL DIMENSIONS ARE IN MILIMETERS (INCHES) UNLESS OTHERWISE INDICATED.
20. SCHEMATIC SHOWN WITH BREAKER OPEN, CONTACTOR OPEN, CABINET DOOR CLOSED, CLOCK NOT ACTIVE.
21. A LAMINATED COPY OF THE CIRCUIT SCHEMATIC AND SCADA I/O DIAGRAM SHALL BE ATTACHED TO THE INSIDE OF THE CONTROLLER.

MODEL: Default
 FILE NAME: \\0101P090303140601Task-Order_11062K5604_CADD\CADD_Sheets\ID162K56-Fit-Right-11.dgn
 PROJECT: \\lanroom\data\Illinois\000PVIDOT\Documents\IDOT_Offices\ID162K56-Fit-Right-11.dgn

USER NAME = mgarvida	DESIGNED - MG/BN	REVISED -	DRAWN - UCM	REVISED -	STATE OF ILLINOIS DEPARTMENT OF TRANSPORTATION	LIGHTING CONTROLLER, BASE MOUNTED 480 VOLT, 200 AMP, (DUAL)	F.A. RTE.	SECTION	COUNTY	TOTAL SHEETS	SHEET NO.								
PLOT SCALE = 50,0000 ' / in.	CHECKED - RP	REVISED -	CHECKED -	REVISED -															
PLOT DATE = 4/19/2019	DATE - 12-18-02	REVISED -				SCALE: NONE	SHEET 4	OF 4	SHEETS	STA.	TO STA.								
<table border="1" style="width: 100%; border-collapse: collapse;"> <tr> <td colspan="2" style="text-align: center;">E-200 (BE-200)</td> <td colspan="2" style="text-align: center;">CONTRACT NO.</td> </tr> <tr> <td colspan="2" style="text-align: center;">ILLINOIS</td> <td colspan="2" style="text-align: center;">FED. AID PROJECT</td> </tr> </table>												E-200 (BE-200)		CONTRACT NO.		ILLINOIS		FED. AID PROJECT	
E-200 (BE-200)		CONTRACT NO.																	
ILLINOIS		FED. AID PROJECT																	

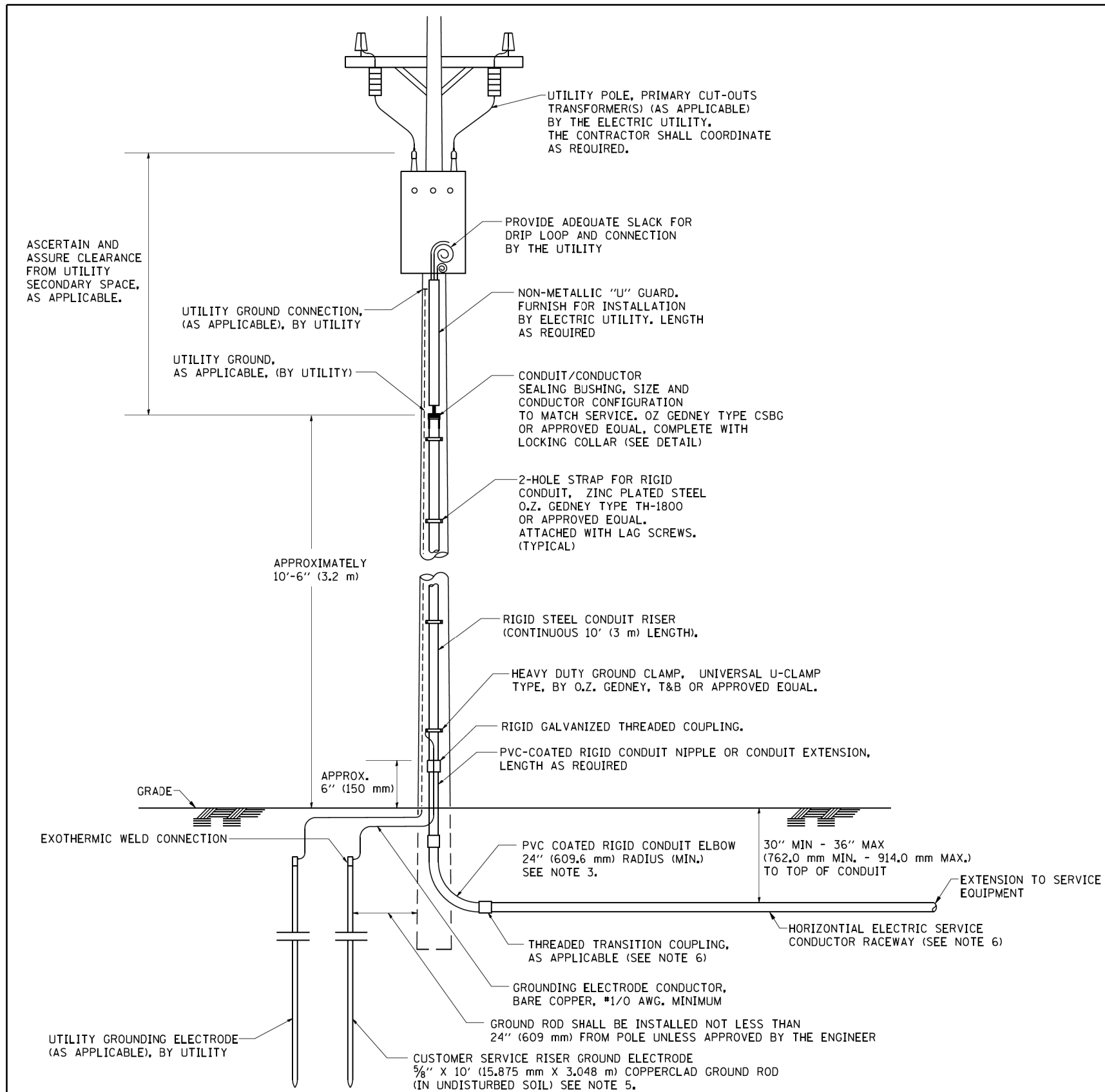
E-200

MODEL: Default
 FILE NAME: \\0101P090303140601Task-Order_11062K5604_CADD\CADD_Sheets\ID162K56-Fit-Right-11.dgn



USER NAME = mgarvida	DESIGNED - MG/BN	REVISED -	DRAWN - UCM	REVISED -	STATE OF ILLINOIS DEPARTMENT OF TRANSPORTATION	IDOT D1-BUREAU OF ELECTRICAL STANDARD DETAILS (TYP.)	F.A.P. RTE.	SECTION	COUNTY	TOTAL SHEETS	SHEET NO.				
PLOT SCALE = 2 ' / in.	CHECKED - RP	REVISED -	CHECKED -	REVISED -											
PLOT DATE = 7/3/2019	DATE - 01/10/2020	REVISED -				SCALE:	SHEET	OF	SHEETS	STA.	TO STA.				
<table border="1" style="width: 100%; border-collapse: collapse;"> <tr> <td colspan="2" style="text-align: center;">ILLINOIS</td> <td colspan="2" style="text-align: center;">FED. AID PROJECT</td> </tr> </table>												ILLINOIS		FED. AID PROJECT	
ILLINOIS		FED. AID PROJECT													

LT-11

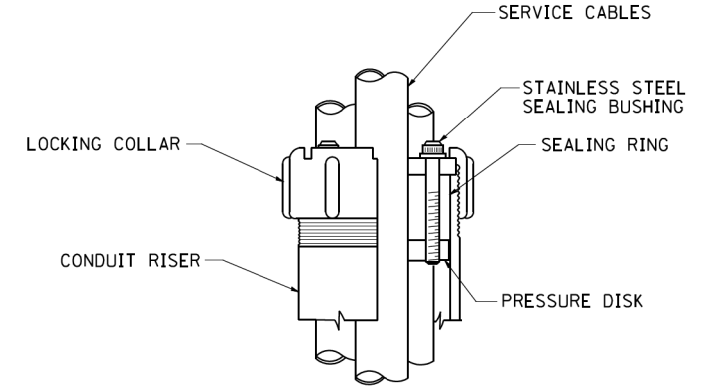


APPLICATION

THIS DETAIL APPLIES FOR LOW VOLTAGE ELECTRIC SERVICE (660 V OR LESS) FROM AN OVERHEAD UTILITY SUPPLY TO SEPERATLY-MOUNTED SERVICE EQUIPMENT.

NOTES

- SERVICE VOLTAGE SHALL BE AS INDICATED ELSEWHERE IN THE DRAWINGS.
- UNLESS OTHERWISE INDICATED, ITEMS AND WORK SHALL BE INCLUDED AND PAID AS PART OF THE ELECTRIC UTILITY SERVICE INSTALLATION PAY ITEM.
- CONDUIT AND CONNECTOR DIAMETER SHALL MATCH THE DIAMETER OF THE SERVICE CONDUCTOR RACEWAY AS INDICATED ON THE PLANS.
- PVC COATED RACEWAYS AND ACCESSORIES SHALL BE CAREFULLY INSTALLED WITH MFR RECOMMENDED TOOLS AND PROCEDURES TO AVOID DAMAGE. ANY DAMAGE SHALL BE REPAIRED WITH COMPATIBLE PVC TOUCH-UP MATERIAL TO THE SATISFACTION OF THE ENGINEER OR THE DAMAGED MATERIAL SHALL BE REPLACED AT NO ADDITIONAL COST.
- THE CONTRACTOR SHALL OBTAIN INSPECTION AND APPROVAL BY THE ENGINEER OF SERVICE RISER GROUND ELECTRODE, RISER ELBOW, NIPPLE AND CONNECTION TO SERVICE CONDUCTOR RACEWAY EXTENSION BEFORE BACKFILL AND SHALL ALSO OBTAIN INSPECTION OF SERVICE RISER AND SEALING BUSHING BEFORE UTILITY "U" GUARD INSTALLATION AND SERVICE CONNECTION.
- THE HORIZONTAL ELECTRIC SERVICE CONDUCTOR RACEWAY SHALL BE AS INDICATED AND SHALL BE MEASURED SEPARATELY FOR PAYMENT. WHEN THE RACEWAY IS PVC-COATED RIGID GALVANIZED STEEL, THE COUPLING SHALL BE THE SAME. WHEN THE RACEWAY IS PVC CONDUIT (IN CONCRETE), THE COUPLING SHALL BE A METALIC TO NON METALIC ADAPTER, WHEN THE RACEWAY IS ENCASED IN CONCRETE, THE CONCRETE SHALL EXTEND TO COVER THE COUPLING.
- PLANS AND DETAILS INDICATE THE GENERAL NATURE AND REQUIREMENTS. THEY DO NOT SHOW EVERY ACCESSORY AND ATTACHMENT, AND THEY DO NOT RELIEVE THE CONTRACTOR OF THE REQUIREMENTS OF THE SPECIFICATIONS AND SPECIAL PROVISIONS TO ASCERTAIN UTILITY REQUIREMENTS AND TO COORDINATE ACCORDINGLY, FURNISHING ALL ITEMS AND WORK NOT PROVIDED BY THE UTILITY, BUT NECESSARY FOR A COMPLETE SERVICE INSTALLATION IS REQUIRED AND SHALL BE INCLUDED IN THE ELECTRIC UTILITY SERVICE INSTALLATION PAY ITEM.



SEALING BUSHING DETAIL

FILE NAME = W:\dststd\22x34\be220.dgn	USER NAME = geglionobt	DESIGNED - DRAWN -	REVISD - 03-03-06 REVISD -	STATE OF ILLINOIS DEPARTMENT OF TRANSPORTATION	ELECTRIC SERVICE INSTALLATION AERIAL, REMOTE DISCONNECT			F.A.P. RTE.	SECTION	COUNTY	TOTAL SHEETS	SHEET NO.
PLOT SCALE = 50.0000' / IN.	CHECKED - MEA	REVISD -	REVISD -		SCALE: NONE	SHEET NO. 1 OF 1 SHEETS	STA.	TO STA.	BE-220		CONTRACT NO.	
PLOT DATE = 1/4/2008	DATE -	REVISD -	REVISD -		FED. ROAD DIST. NO. 1 ILLINOIS FED. AID PROJECT							

MODEL: Default
FILE NAME: W:\0131P\09\03\140601\Task_Order_11\62K56\04_CADD\CADD_Sheets\0162K56-rlt-right-12.dgn



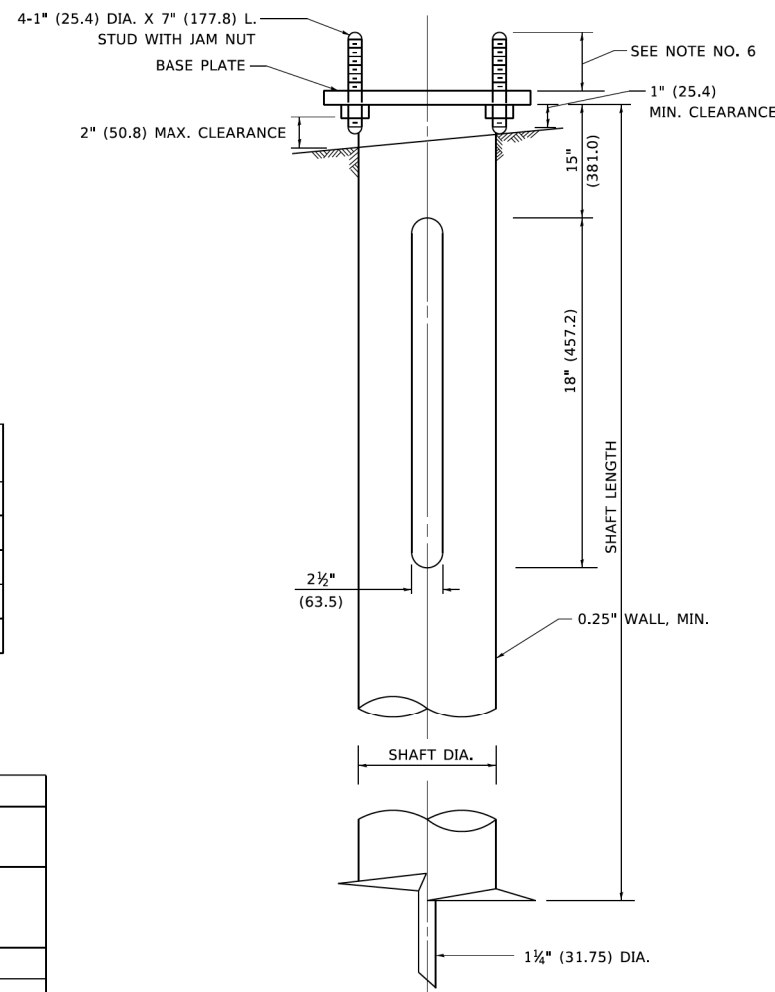
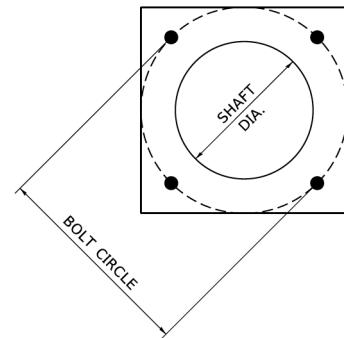
USER NAME = mgarvida	DESIGNED - MG/BN	REVISD -
DRAWN - UCM	REVISD -	
PLOT SCALE = 2' / in.	CHECKED - RP	REVISD -
PLOT DATE = 7/3/2019	DATE - 01/10/2020	REVISD -

**STATE OF ILLINOIS
DEPARTMENT OF TRANSPORTATION**

IDOT D1-BUREAU OF ELECTRICAL DETAIL STANDARDS

SCALE: SHEET OF SHEETS STA. TO STA.

F.A.P. RTE.	SECTION	COUNTY	TOTAL SHEETS	SHEET NO.
0353	2019-183-L	COOK/WILL	22	18
CONTRACT NO. 62K56				
ILLINOIS FED. AID PROJECT				



NOTES

1. ALL DIMENSION IN INCHES (MILLIMETERS) UNLESS OTHERWISE SHOWN.
2. ALL MATERIAL SHALL BE GALVINIZED ACCORDING TO AASHTO M111, UNLESS OTHERWISE SPECIFIED.
3. ALL WELDS SHALL BE CONTINUOUS AND NOT LESS THAN 1#4" (6.35 mm) FILLET WELDS. THE WELDED FOUNDATION SHALL BE CAPABLE OF WITHSTANDING 10,000 FT/LBS (13558.18 n.m) OF INSTALLATION TORQUE APPLIED ABOUT THE AXIS OF THE FOUNDATION.
4. THE HELIX FOUNDATION SHAFT SHALL BE INSTALLED VERTICAL AND THE BASE PLATE SHALL BE IN LEVEL. THE BREAKAWAY COUPLINGS AND HARDWARE SHALL NOT BE USED TO ALIGN THE POLE INSTALLATION.
5. THE CABLE TRENCH SHALL BE BACKFILLED AND FIRMLY COMPACTED BEFORE THE INSTALLATION OF THE LIGHT POLE.
6. THE CONTRACTOR SHALL COORDINATE EXTENSION OF ANCHOR BOLTS ABOVE TOP OF THE BASE PLATE WITH THE BREAKAWAY DEVICE MANUFACTURER'S REQUIREMENTS.
7. ANY VOIDS WITHIN THE METAL FOUNDATION SHALL BE FILLED WITH FINE AGGREGATE.
8. METAL FOUNDATIONS SHALL BE INSTALLED IN UNDISTURBED SOIL. PREDRILLING A PILOT HOLE AND/OR BACKFILLING AROUND THE FOUNDATION IS NOT ALLOWED.
9. THE METAL FOUNDATION SHALL NOT BE INSTALLED TO A TORQUE WHICH EXCEEDS THE MANUFACTURER'S MAXIMUM TORQUE RATING NOR SHALL IT BE INSTALLED TO AN INSTALLATION TORQUE VALUE OF LESS THAN 3,500 FT LB (4,750 KNM). METAL FOUNDATIONS THAT ARE NOT INSTALLED TO FULL INSTALLATION DEPTH OR DO NOT ACHIEVE THE MINIMUM INSTALLATION TORQUE SHALL BE REMOVED AND REPLACED WITH A CONCRETE FOUNDATION AT NO ADDITIONAL COST.
10. THE BASEPLATE SHALL BE PERPENDICULAR TO THE SHAFT AXIS ($\pm 1^\circ$) AND THE HOLE CENTERLINE SHALL BE CONCENTRIC (± 0.188) TO THE SHAFT AXIS.
11. THE PILOT POINT AND SHAFT AXIS SHALL BE CONCENTRIC (± 0.125) AND IN LINE ($\pm 2^\circ$).
12. THE BASEPLATE SHALL BE STAMPED WITH THE MANUFACTURERS NAME AND DATE OF MANUFACTURE.

HELIX FOUNDATION SIZE

POLE MOUNTING HEIGHT	BOLT CIRCLE	SHAFT DIAMETER	SHAFT LENGTH	BASEPLATE
30 FT.	11 1/2"	8 5/8"	6 FT.	12"x12"x1"
31 FT.-35 FT.	11 1/2"	8 5/8"	6 FT.	12"x12"x1"
36 FT.-40FT.	15"	8 5/8"	6 FT.	15"x15"x1 1/4"
41 FT.-45 FT.	15"	8 5/8"	6 FT.	15"x15"x1 1/4"
46 FT.-50 FT.	15"	10"	8 FT.	15"x15"x1 1/4"

METAL HELIX FOUNDATION MATERIALS

ITEM	MATERIAL REQUIREMENT
BASEPLATE	AASHTO M 270M, GRADE 36 (M270M, GRADE 250)
SHAFT	ASTM A 252, GRADE 2 (PHOSPHOROUS 0.04% MAXIMUM, SULFUR 0.05% MAXIMUM)
HELIX SCREW	AASHTO M 183 (ASTM A 635)
PILOT POINT	AASHTO M 270 (ASTM A 575)
ANCHOR RODS/STUDS	AASHTO M 314 (ASTM F 1554)
HEXAGON NUTS	AASHTO M 291M (ASTM A 563) GRADE DH, OR AASHTO M 292 (ASTM A 194) GRADE 2H
WASHERS	AASHTO M 293 (ASTM F 436)

USER NAME = footem	DESIGNED -	REVISED -	STATE OF ILLINOIS DEPARTMENT OF TRANSPORTATION	LIGHT POLE FOUNDATION, METAL				F.A. RTE.	SECTION	COUNTY	TOTAL SHEETS	SHEET NO.
PLOT SCALE = 50.0000' / in.	DRAWN - DLB	REVISED -						SCALE: NONE SHEET 1 OF 1 SHEETS STA. TO STA.				BE-305 CONTRACT NO.
PLOT DATE = 4/19/2019	CHECKED -	REVISED -		ILLINOIS FED. AID PROJECT								
DATE - 02-27-07	REVISIED -											

MODEL: Default
 FILE NAME: \\01013109\cscs140601\Task_Order_11062\K56\04_CADD\CADD_Sheets\11062\K56-ht-height-13.dgn
 FILE NAME: \\01013109\cscs140601\Task_Order_11062\K56\04_CADD\CADD_Sheets\11062\K56-ht-height-13.dgn
 FILE NAME: \\01013109\cscs140601\Task_Order_11062\K56\04_CADD\CADD_Sheets\11062\K56-ht-height-13.dgn

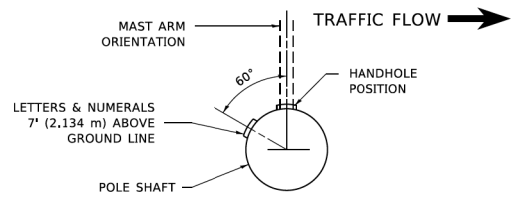


USER NAME = mgarvida	DESIGNED - MG/BN	REVISED -
PLOT SCALE = 2' / in.	DRAWN - UCM	REVISED -
PLOT DATE = 7/3/2019	CHECKED - RP	REVISED -
DATE - 01/10/2020	REVISIED -	

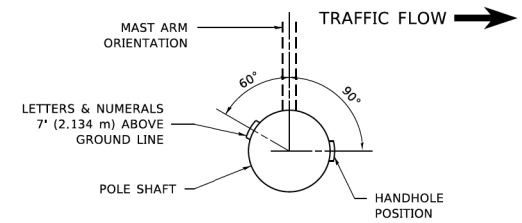
**STATE OF ILLINOIS
DEPARTMENT OF TRANSPORTATION**

IDOT D1-BUREAU OF ELECTRICAL DETAIL STANDARDS

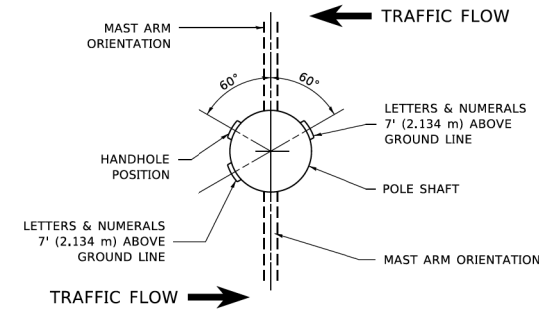
F.A.P. RTE.	SECTION	COUNTY	TOTAL SHEETS	SHEET NO.
0353	2019-183-L	COOK/WILL	22	19
CONTRACT NO. 62K56				
ILLINOIS FED. AID PROJECT				



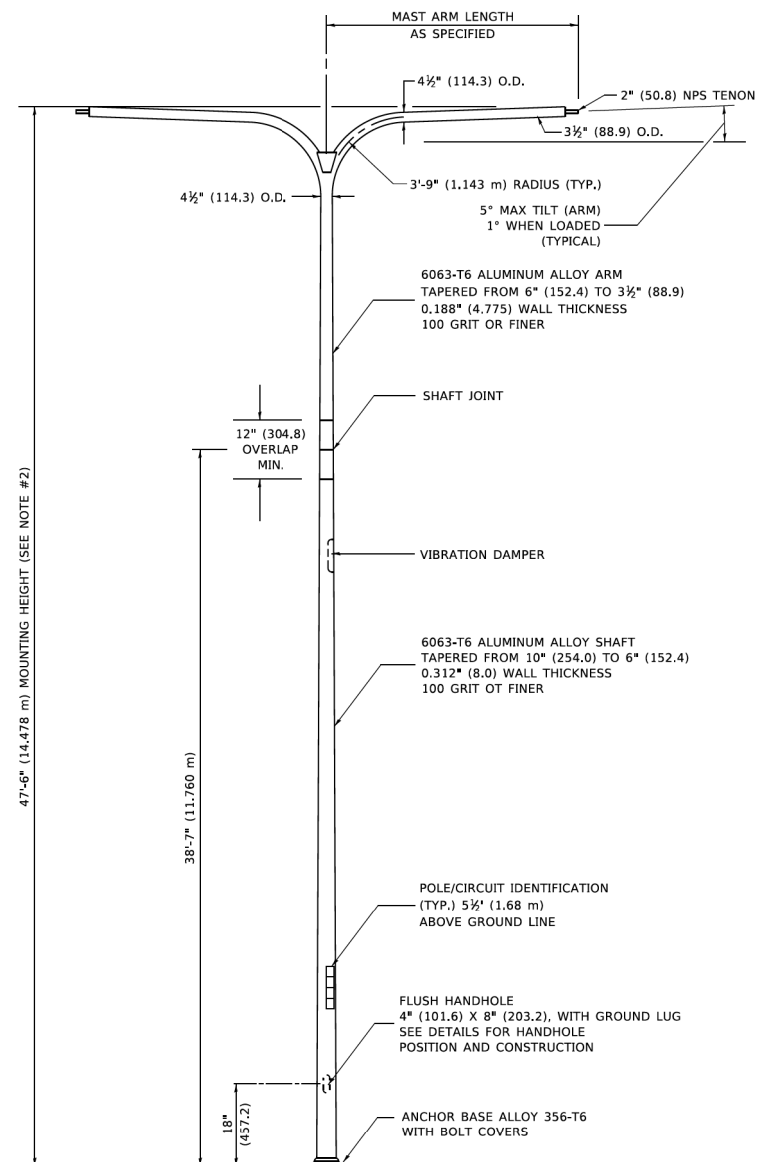
POSITION OF HANDHOLE AND POLE NUMBER FOR SINGLE MAST ARM POLES MOUNTED ON BRIDGE PARAPET OR BARRIER WALL



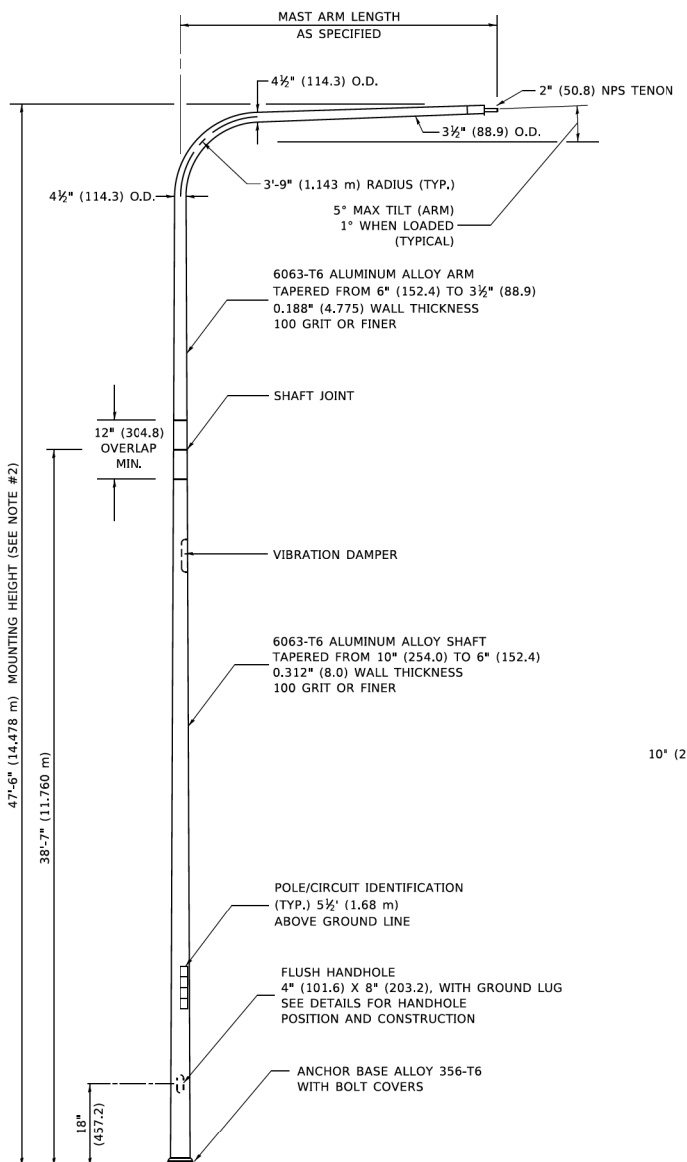
POSITION OF HANDHOLE AND POLE NUMBER FOR SINGLE MAST ARM POLES



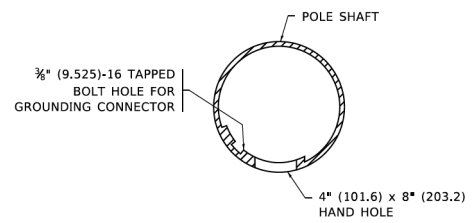
POSITION OF HANDHOLE AND POLE NUMBER FOR TWIN MAST ARM POLES



TWIN ARM POLE

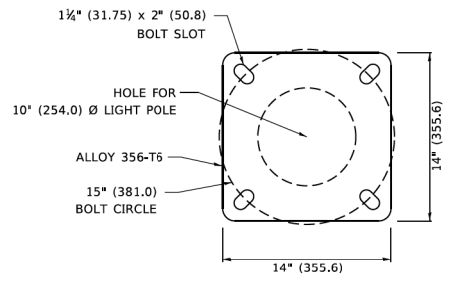


SINGLE ARM POLE



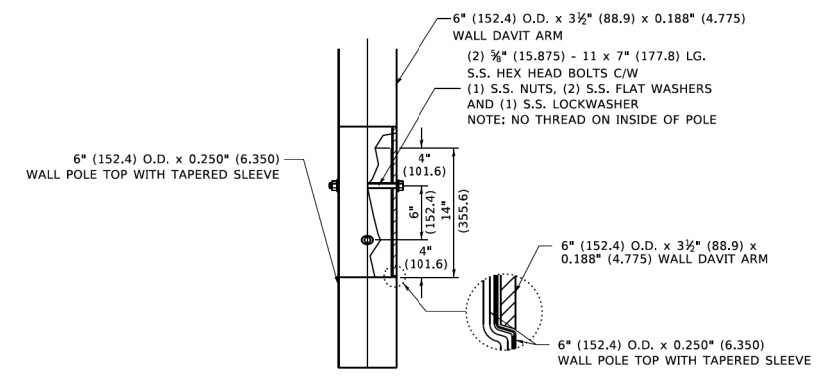
HANDHOLE DETAIL

(N.T.S.)



LIGHT POLE BASE PLATE DETAIL

(FOR POLE MOUNTED ON 15 INCH (381.0) BOLT CIRCLE FOUNDATION)



DAVIT ARM CONNECTION

[14" (355.6) OVERLAP SHOWN]

NOTES

1. ALL DIMENSIONS ARE IN INCHES (MILLIMETERS) UNLESS OTHERWISE SHOWN.
2. MOUNTING HEIGHT IS DEFINED AS THE DISTANCE FROM THE CENTERLINE OF THE TENON TO THE BOTTOM OF THE ANCHOR BASE.
3. TWO PIECE SHAFT WILL BE MATCHED MARKED AND INTERCHANGEABLE BETWEEN DIFFERENT UNITS. FIELD DRILLING OF THE HOLES WILL NOT BE ALLOWED.
4. THE LIGHT POLE WILL MEET AASHTO DESIGN CRITERIA AS SPECIFIED.
5. THE INSTALLING CONTRACTOR WILL PROVIDE A UL LISTED GROUNDING CONNECTOR. BURNDY K2C23, T&B SP4DL OR APPROVED EQUAL.
6. LIGHT POLES WILL NOT BE INSTALLED WITHOUT MAST ARMS AND LUMINAIRES.
7. LIGHT POLES WILL BE SET PLUMB ON THE FOUNDATION WITHOUT THE USE OF LEVELING NUTS, WASHERS OR SHIMS.
8. LIGHTING UNIT IDENTIFICATION NUMBERS SHALL BE INSTALLED BEFORE THE LIGHTING UNIT IS ENERGIZED.

MODEL: D:\dwg\...
 FILE NAME: ...
 USER: ...
 DATE: ...

USER NAME = footem	DESIGNED -	REVISED - D. DREW 05-07-92
PLOT SCALE = 50.0000' / in.	DRAWN -	REVISED - R. TOMSONS 09-06-00
PLOT DATE = 4/19/2019	CHECKED -	REVISED - R. TOMSONS 09-02-03
	DATE -	REVISED - R. TOMSONS 01-18-13

**STATE OF ILLINOIS
DEPARTMENT OF TRANSPORTATION**

DAVIT LIGHT POLE			
47'-6" (14.478 m) MOUNTING HEIGHT			
SCALE: NONE	SHEET 1	OF 1 SHEETS	STA. TO STA.

F.A. RTE.	SECTION	COUNTY	TOTAL SHEETS	SHEET NO.
BE-410			CONTRACT NO.	
ILLINOIS FED. AID PROJECT				

MODEL: D:\dwg\...
 FILE NAME: ...
 USER: ...
 DATE: ...

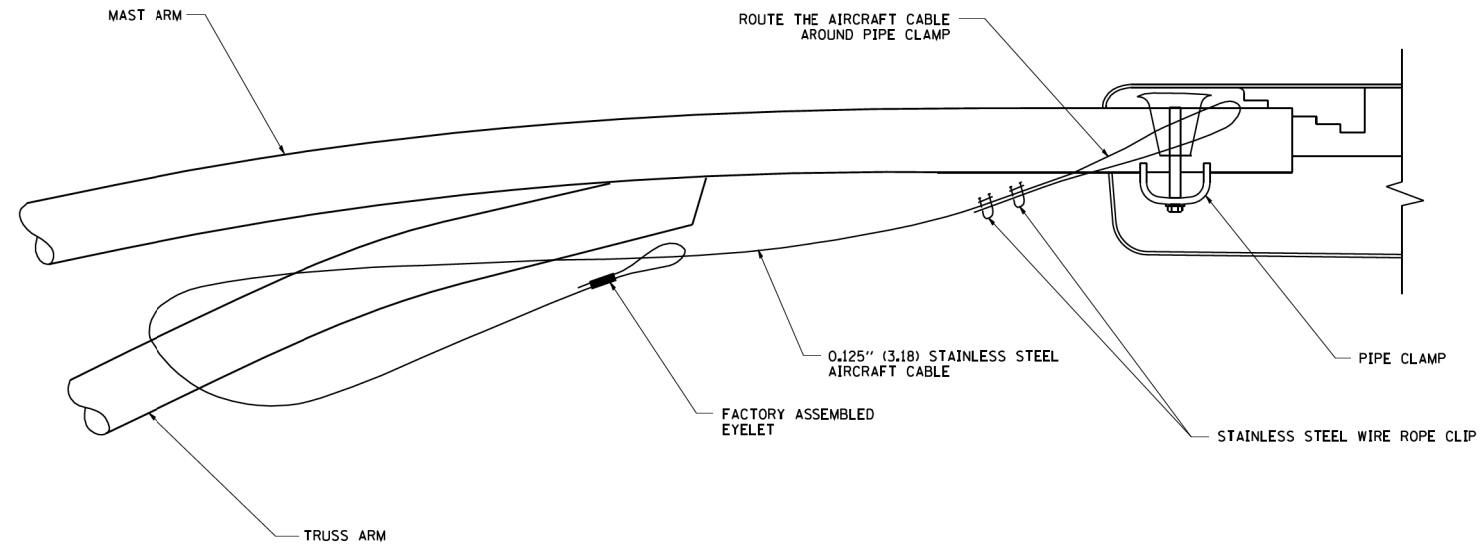
SINGH
SINGH & ASSOCIATES INC.
CONSULTING ENGINEERS

USER NAME = mgarvida	DESIGNED - MG/BN	REVISED -
PLOT SCALE = 2' / in.	DRAWN - UCM	REVISED -
PLOT DATE = 7/3/2019	CHECKED - RP	REVISED -
	DATE - 01/10/2020	REVISED -

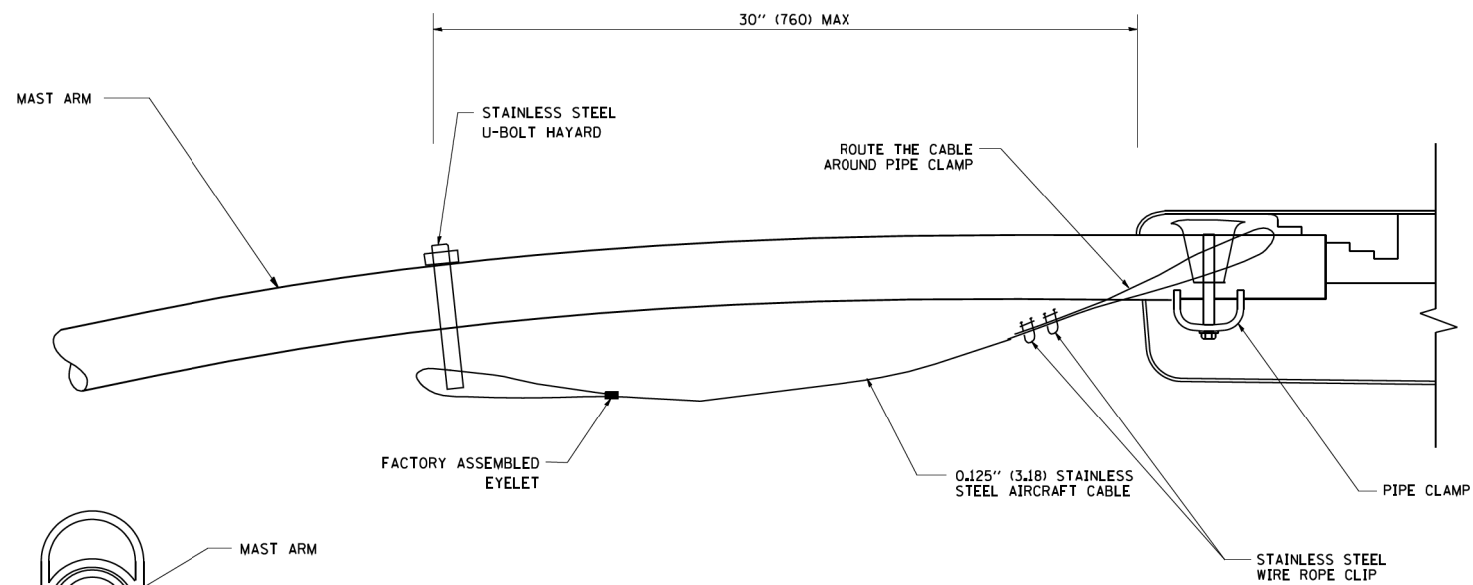
**STATE OF ILLINOIS
DEPARTMENT OF TRANSPORTATION**

IDOT D1-BUREAU OF ELECTRICAL DETAIL STANDARDS			
SCALE:	SHEET	OF	SHEETS
			STA. TO STA.

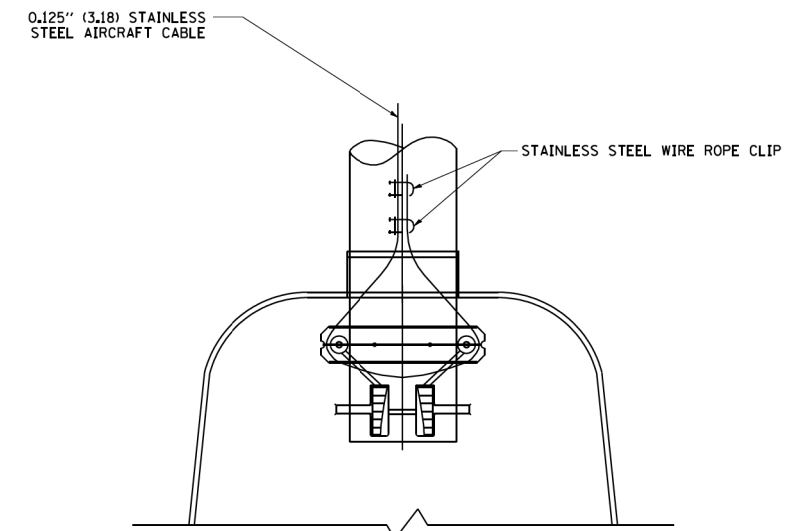
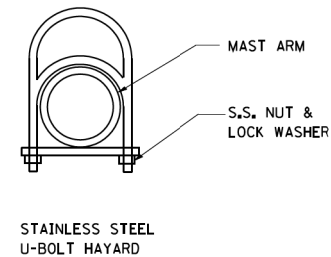
F.A.P. RTE.	SECTION	COUNTY	TOTAL SHEETS	SHEET NO.
0353	2019-183-L	COOK/WILL	22	20
CONTRACT NO. 62K56				
ILLINOIS FED. AID PROJECT				



SIDE VIEW (TRUSS ARM)
N.T.S.



SIDE VIEW (SINGLE MEMBER OR DAVIT ARM)
N.T.S.



BOTTOM VIEW
N.T.S.

NOTES:

1. ALL DIMENSIONS ARE IN MILLIMETERS (INCHES) UNLESS OTHERWISE SHOWN.
2. CONTRACTOR SHALL ADJUST THE WIRE CLIP TO ELIMINATE ANY SLACK FROM THE WIRE ROPE.
3. THE 0.125" (3.18) STAINLESS STEEL AIRCRAFT CABLE SHALL REMAIN VISIBLE FROM THE GROUND LEVEL.
4. THE BREAKING STRENGTH OF THE CABLE SHALL BE 1700 LBS. MIN.

FILE NAME = W:\dststd\22x34\ba781.dgn	USER NAME = gaglianobt	DESIGNED - UCM	REVISED - 08-08-03	STATE OF ILLINOIS DEPARTMENT OF TRANSPORTATION	LUMINAIRE SAFETY CABLE ASSEMBLY			F.A.P. RTE.	SECTION	COUNTY	TOTAL SHEETS	SHEET NO.	
PLOT SCALE = 50.000' / IN.	CHECKED - RP	REVISOR - UCM	DATE - 1/4/2008		SCALE: NONE	SHEET NO. 1	OF 1	SHEETS	STA.	TO STA.	BE-701		CONTRACT NO.
FED. ROAD DIST. NO. 1 ILLINOIS FED. AID PROJECT													
CONTRACT NO. 62K56													

MODEL: Default
FILE NAME: W:\dststd\22x34\ba781.dgn
CADD: CADD_Sheets\11062K56\04_CADD\CADD_Sheets\11062K56-FH-Right-15.dgn



USER NAME = mgarvida	DESIGNED - MG/BN	REVISED -
PLOT SCALE = 2' / IN.	CHECKED - RP	REVISOR - RP
PLOT DATE = 7/3/2019	DATE - 01/10/2020	REVISOR -

**STATE OF ILLINOIS
DEPARTMENT OF TRANSPORTATION**

IDOT D1-BUREAU OF ELECTRICAL DETAIL STANDARDS			
SCALE:	SHEET	OF	SHEETS
	STA.	TO STA.	

F.A.P. RTE.	SECTION	COUNTY	TOTAL SHEETS	SHEET NO.
0353	2019-183-L	COOK/WILL	22	21
ILLINOIS FED. AID PROJECT				CONTRACT NO. 62K56

