

149

STATE OF ILLINOIS
DEPARTMENT OF TRANSPORTATION

DATE	SECTION	COUNTY	TOTAL SHEETS	SHEET NO
VAR	2019-185-I	VARIOUS	B	I
		ILLINOIS	CONTRACT NO. 62K58	

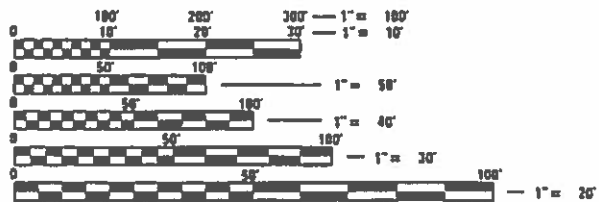
FOR INDEX OF SHEETS, SEE SHEET NO. 2

PROPOSED HIGHWAY PLANS

ROUTE: VARIOUS
SECTION 2019-185-I
PROJECT: N/A
DEAD TREE REMOVAL
VARIOUS COUNTIES

C-91-160-20

IMPROVEMENTS ARE AT VARIOUS
LOCATIONS WITHIN DISTRICT ONE

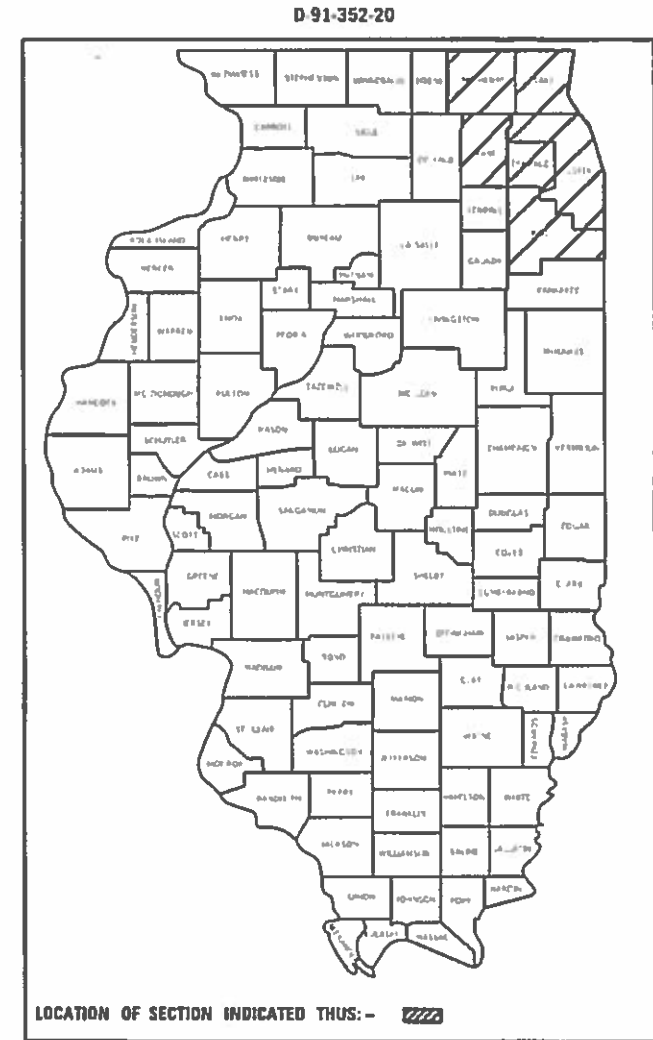
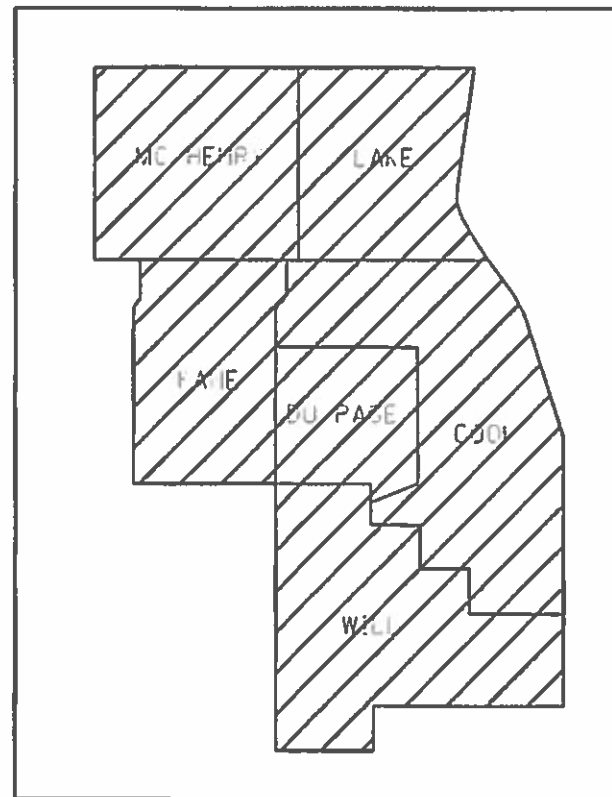


FULL SIZE PLANS HAVE BEEN PREPARED USING STANDARD ENGINEERING SCALES. REDUCED SIZED PLANS WILL NOT CONFORM TO STANDARD SCALES. IN MAKING MEASUREMENTS ON REDUCED PLANS, THE ABOVE SCALES MAY BE USED.

J.U.L.I.E.
JOINT UTILITY LOCATION INFORMATION FOR EXCAVATORS
1-800-892-0123
OR 811

PROJECT ENGINEER JAMES STUMPNER
PROJECT MANAGER GIOVANNA ZAFFINA (847) 705-4171

CONTRACT NO. 62K58



STATE OF ILLINOIS
DEPARTMENT OF TRANSPORTATION

SUBMITTED December 19, 2019

[Signature]
REGIONAL ENGINEER

Jan 31, 2020
[Signature]
ENGINEER OF DESIGN AND ENVIRONMENT

Jan 31, 2020
[Signature]
DIRECTOR OF HIGHWAYS PROJECT IMPLEMENTATION

PRINTED BY THE AUTHORITY
OF THE STATE OF ILLINOIS

GROSS LENGTH = x.xx FT. = x.xxx MILE
NET LENGTH = x.xx FT. = x.xxx MILE

INDEX OF SHEETS

SHEET NO.	DESCRIPTION
1	COVER SHEET
2	INDEX OF SHEETS, HIGHWAY STANDARDS, GENERAL NOTES
3	SUMMARY OF QUANTITIES
4	SAMPLE WORK ORDERS
5	STUMP DETAIL
6	PRUNING FOR SAFETY AND EQUIPMENT CLEARANCE
7	TRAFFIC CONTROL AND PROTECTION FOR SIDE ROADS, INTERSECTIONS, & DRIVEWAYS (TC-10)
8	TRAFFIC CONTROL DETAIL FOR FREEWAY SHOULDER CLOSURES AND PARTIAL RAMP CLOSURE (TC-17)

HIGHWAY STANDARDS

STANDARD NO.	DESCRIPTION
701001-02	OFF ROAD OPERATIONS, 2L, 2W, MORE THAN 15' AWAY
701006-05	OFF ROAD OPERATIONS, 2L, 2W, 15' TO 24" FROM PAVEMENT
701106-02	OFF ROAD OPERATIONS, MORE THAN 15' AWAY
701201-05	LANE CLOSURE, 2L, 2W, DAY ONLY, FOR SPEEDS \geq 45 MPH
701301-04	LANE CLOSURE, 2L, 2W, SHORT TIME OPERATIONS
701311-03	LANE CLOSURE 2L, 2W MOVING OPERATIONS - DAY ONLY
701421-08	LANE CLOSURE, MULTILANE, DAY OPERATION ONLY, FOR SPEEDS \geq 45 MPH TO 55 MPH
701422-10	LANE CLOSURE, MULTILANE, FOR SPEEDS \geq 45 MPH TO 55 MPH
701427-05	LANE CLOSURE, MULTILANE, INTERMITTENT OR MOVING OPERATIONS, FOR SPEEDS \leq 40 MPH
701501-06	URBAN LANE CLOSURE, 2L, 2W, UNDIVIDED
701502-09	URBAN LANE CLOSURE, 2L, 2W, BI DIRECTIONAL LEFT TURN LANE
701601-09	URBAN LANE CLOSURE, MULTILANE, 1W OR 2W WITH NON-TRAVERSABLE MEDIAN
701606-10	URBAN SINGLE LANE CLOSURE, MULTILANE, 2W WITH MOUNTABLE MEDIAN
701611-01	URBAN HALF CLOSURE, MULTILANE, 2W WITH MOUNTABLE MEDIAN
701701-10	URBAN LANE CLOSURE, MULTILANE INTERSECTION
701801-06	SIDEWALK, CORNER OR CROSSWALK CLOSURE
701901-08	TRAFFIC CONTROL DEVICES

GENERAL NOTES

- BEFORE STARTING ANY EXCAVATION, THE CONTRACTOR SHALL CALL "JULIE" AT (800) 892-0123 OR 811 FOR FIELD LOCATIONS OF BURIED ELECTRIC, TELEPHONE AND GAS UTILITIES (48 HOUR NOTIFICATION IS REQUIRED).
- THE CONTRACTOR WILL NOT BE ALLOWED TO SET UP A YARD OR FIELD OFFICE ON STATE PROPERTY WITHOUT WRITTEN PERMISSION FROM THE DEPARTMENT.
- IT SHALL BE THE CONTRACTOR'S RESPONSIBILITY TO VERIFY ALL CONDITIONS EXISTING IN THE FIELD PRIOR TO STARTING WORK ORDERS.
- THE CONTRACTOR SHALL CONTACT DISTRICT ONE TRAFFIC CONTROL SUPERVISOR AT (847) 705-4470 A MINIMUM OF 72 HOURS IN ADVANCE OF BEGINNING WORK.
- THE CONTRACTOR SHALL REQUEST AND GAIN APPROVAL FROM THE ILLINOIS DEPARTMENT OF TRANSPORTATION'S EXPRESSWAY TRAFFIC OPERATIONS ENGINEER AT WWW.IDOTLCS.COM TWENTY-FOUR (24) HOURS IN ADVANCE OF ALL DAILY LANE, RAMP AND SHOULDER CLOSURES AND 7 DAYS IN ADVANCE OF ALL PERMANENT AND WEEKEND CLOSURES AND 7 DAYS IN ADVANCE OF ALL PERMANENT AND WEEKEND CLOSURES ON ALL FREEWAYS AND/OR EXPRESSWAYS IN DISTRICT ONE. THIS ADVANCE NOTIFICATION IS CALCULATED BASED ON WORKWEEK OF MONDAY THROUGH FRIDAY AND SHALL NOT INCLUDE WEEKENDS OR HOLIDAYS.
- THE CONTRACTOR SHALL BE REQUIRED TO PROVIDE ACCESS TO ABUTTING PROPERTY AT ALL TIMES DURING THE CONSTRUCTION OF THIS PROJECT.
- THE CONTRACTOR SHALL USE CARE IN TREE REMOVAL OPERATIONS NEAR ANY AND ALL EXISTING ITEMS THAT WILL NOT BE REMOVED. ANY DAMAGE DONE TO EXISTING ITEMS BY THE CONTRACTOR SHALL BE REPAIRED AT THE CONTRACTOR'S OWN EXPENSE TO THE SATISFACTION OF THE ENGINEER.
- THE CONTRACTOR SHALL MAINTAIN PEDESTRIAN ACCESS AT ALL TIMES DURING CONSTRUCTION.
- THE CONSTRUCTION LIMITS WILL BE STAKED AND APPROVED BY THE ENGINEER PRIOR TO COMMENCING CONSTRUCTION. THE CONSTRUCTION LIMITS MAY BE ADJUSTED BY THE ENGINEER TO PRESERVE TREES AND NO ADDITIONAL COMPENSATION WILL BE PAID TO THE CONTRACTOR FOR CHANGES IN CONSTRUCTION LIMITS.
- DURING CONSTRUCTION OPERATIONS, WHEN ANY LOOSE MATERIAL IS DEPOSITED IN THE FLOW LINE OF DITCHES, GUTTERS, OR DRAINAGE STRUCTURES SO THAT THE NATURAL FLOW OF WATER IS OBSTRUCTED, THE MATERIAL SHALL BE REMOVED AT THE CLOSE OF EACH WORKING DAY. THIS WORK IS CONSIDERED AS PART OF CLEAN UP.
- TO AVOID IMPACTS TO THE STATE AND FEDERALLY-THREATENED NORTHERN LONG EARED BAT (MYOTIS SEPTENTRIONALIS) AND ITS HABITAT, CLEARING OF POTENTIAL HABITAT TREES SHALL NOT BE PERMITTED FROM APRIL 1ST THROUGH OCTOBER 14TH. THE ENGINEER SHALL HAVE THE FINAL DETERMINATION OF TREE REMOVAL.
- THE CONTRACTOR SHALL ADHERE TO ARTICLE 107.23 OF THE CURRENT IDOT STANDARD SPECIFICATIONS BOOK.
- WHEN HERBICIDE WORK IS SPECIFIED AND AUTHORIZED, THE CONTRACTOR SHALL HAVE A LICENSED APPLICATOR ON THE WORK SITE TO PERFORM SAID WORK UNDER THE DIRECT SUPERVISION OF THE RESIDENT ENGINEER.

MODEL: Defaut
 FILE NAME: ...
 PROJECT: ...

USER NAME =	@rosarions
PLOT SCALE =	800 1/8" = 1' in
PLOT DATE =	8/28/2020

DESIGNED -	REVISOR -
DRAWN -	REVISOR -
CHECKED -	REVISOR -
DATE -	REVISOR -

DESIGNED -	REVISOR -
DRAWN -	REVISOR -
CHECKED -	REVISOR -
DATE -	REVISOR -

STATE OF ILLINOIS
DEPARTMENT OF TRANSPORTATION

DEAD TREE REMOVAL
INDEX OF SHEETS, STATE STANDARDS, & GENERAL NOTES

SCALE _____ SHEET _____ OF _____ SHEETS STA _____ TO STA _____

PART	SECTION	COUNTY	TOTAL SHEETS	SHEET NO
VAR	2019 185-1	VARIOUS	8	2
			CONTRACT NO. 62K58	

ILLINOIS FED. AID PROJECT

SUMMARY OF QUANTITIES				CONSTRUCTION TYPE CODE			
CODE NO	ITEM	UNIT	TOTAL QUANTITIES	100% STATE FORMAL FUNDS 0031			
X210002	PRUNING FOR SAFETY AND EQUIPMENT CLEARANCE	UNIT	130	130			
X2010110	TREE REMOVAL (6 TO 15 UNITS DIAMETER), EXPEDITED	UNIT	120	120			
X2010210	TREE REMOVAL (OVER 15 UNITS DIAMETER), EXPEDITED	UNIT	120	120			
X2011300	TREE PRUNING (1 TO 10 INCH DIAMETER), EXPEDITED	EACH	10	10			
X2011350	TREE PRUNING (OVER 10 INCH DIAMETER), EXPEDITED	EACH	20	20			
X2010101	TREE LIMB REMOVAL (4 TO 10 INCHES DIAMETER), EXPEDITED	EACH	10	10			
X2010201	TREE LIMB REMOVAL (OVER 10 INCHES DIAMETER), EXPEDITED	EACH	10	10			
X2010351	TREE REMOVAL, ACRES (SPECIAL), EXPEDITED	ACRE	2	2			
X2010311	TREE REMOVAL (SPECIAL) EXPEDITED	UNIT	3	3			
X2100003	SELECTIVE CLEARING, EXPEDITED	UNIT	15	15			
20100110	TREE REMOVAL (6 TO 15 UNITS DIAMETER)	UNIT	4000	4000			
20100210	TREE REMOVAL (OVER 15 UNITS DIAMETER)	UNIT	3500	3500			

SUMMARY OF QUANTITIES				CONSTRUCTION TYPE CODE			
CODE NO	ITEM	UNIT	TOTAL QUANTITIES	100% STATE FORMAL FUNDS 0031			
20101300	TREE PRUNING (1 TO 10 INCH DIAMETER)	EACH	20	20			
20101350	TREE PRUNING (OVER 10 INCH DIAMETER)	EACH	35	35			
X0100018	TREE REMOVAL (UNDER 6 UNITS DIAMETER)	UNIT	500	500			
X0325222	WEED CONTROL, BASAL TREATMENT	GALLON	25	25			
X0327120	WEED CONTROL, NATIVE LANDSCAPE ENHANCEMENT	ACRE	3	3			
X2010100	TREE LIMB REMOVAL (4 TO 10 INCHES DIAMETER)	EACH	15	15			
X2010200	TREE LIMB REMOVAL (OVER 10 INCHES DIAMETER)	EACH	20	20			
X2010310	TREE REMOVAL (SPECIAL)	UNIT	30	30			
X2010350	TREE REMOVAL, ACRES (SPECIAL)	ACRE	20	20			
X2010400	STUMP REMOVAL ONLY	UNIT	150	150			
Z0064800	SELECTIVE CLEARING	UNIT	130	130			

REV. - MS

FILE NAME = USER NAME = detras@trons
 D:\Nolan\condm4\Illinois\p\WIDOT\Documents\UDOT 0\Files\Q1\11d 1-Projects\C06620C-4DDetor Structures\C062
 PLOT SCALE = 1000593 / in
 PLOT DATE = 12/19/2019

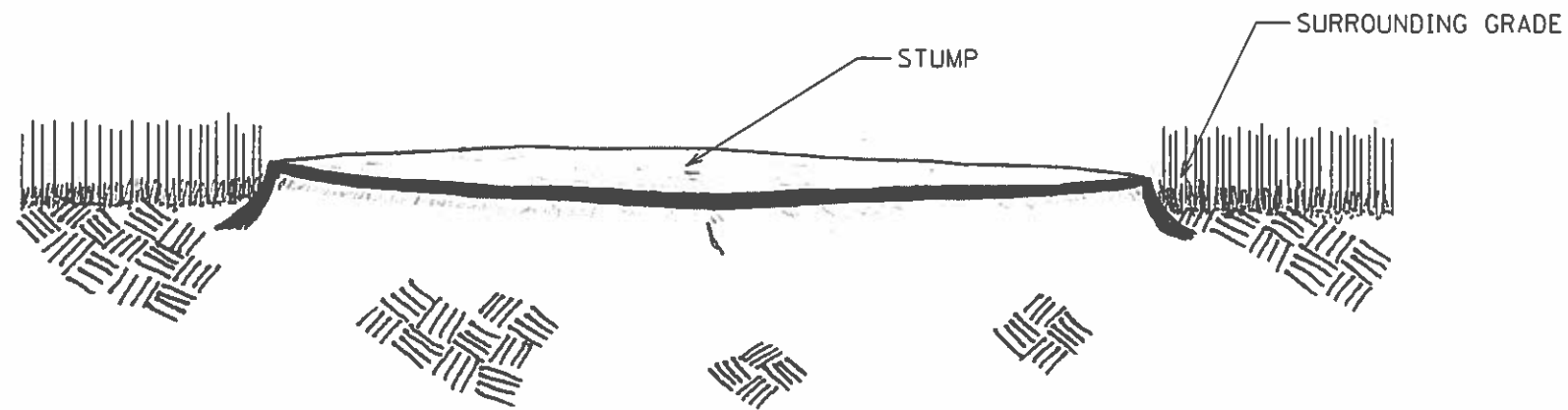
DESIGNED -
 DRAWN -
 CHECKED -
 DATE -
 REVISED -
 REVISED -
 REVISED -
 REVISED -

**STATE OF ILLINOIS
 DEPARTMENT OF TRANSPORTATION**

**DEAD TREE REMOVAL
 SUMMARY OF QUANTITIES**

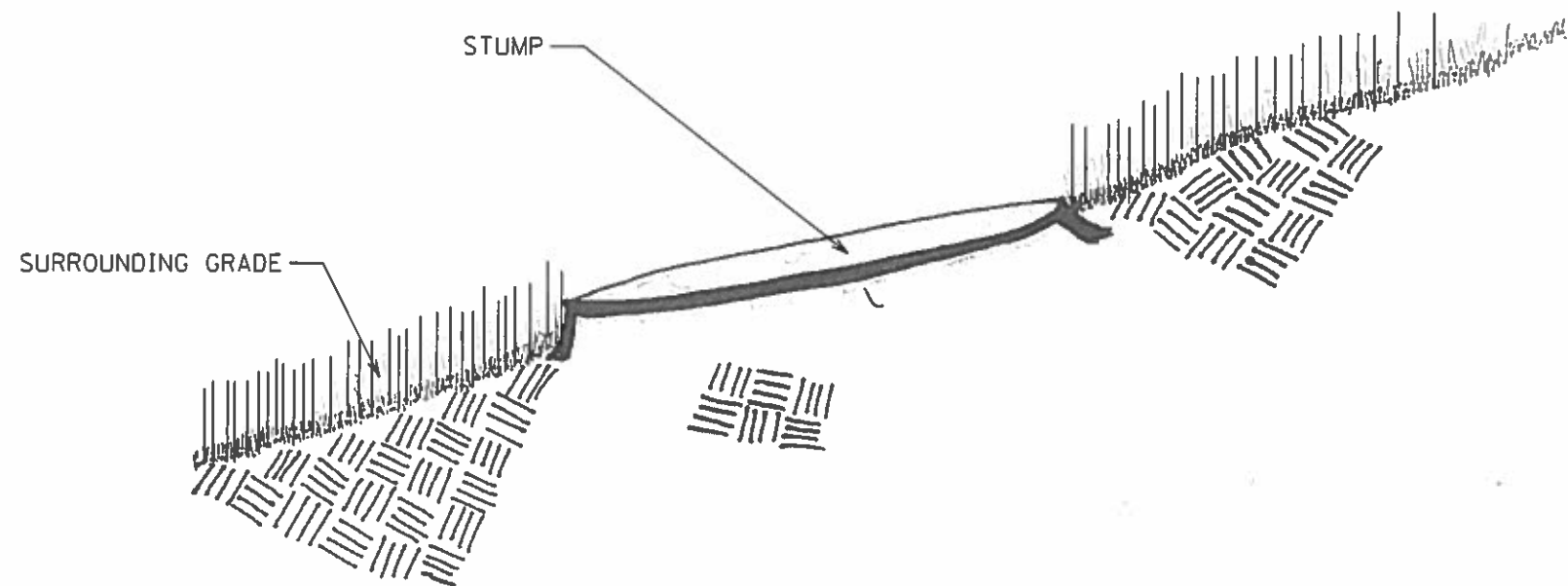
SCALE: _____ SHEET NO. _____ OF _____ SHEETS STA. _____ TO STA. _____

F.A. RTE.	SECTION	COUNTY	TOTAL SHEETS	SHEET NO.
VAR	2019-185-1	VARIOUS	8	3
FED. ROAD DIST. NO. 1 ILLINOIS/FED. AID PROJECT			CONTRACT NO. 62K58	



STUMP CUT FLUSH AT A HORIZONTAL PLANE

NOTE: STUMPS SHALL BE CUT LESS THAN 2" OF THE SURROUNDING GRADE.



STUMP CUT FLUSH ON A SLOPE

NOTE: STUMPS SHALL BE CUT LESS THAN 2" OF THE SURROUNDING GRADE.

DETAILS ARE NOT DRAWN TO SCALE

MODEL: Defaut
 FILE: I:\AIE - p\110480000.dwg
 USER: dsh
 PLOT DATE: 12/18/2019
 PLOT SCALE: 1/8" = 1'-0"
 PLOT SIZE: 11.00 x 17.00
 PLOT AREA: 187.00 sq. ft.
 PLOT PERIMETER: 54.00 ft.
 PLOT WEIGHT: 1.00 lb.
 PLOT TIME: 0.00 min.
 PLOT STATUS: OK
 PLOT MESSAGE:

USLR NAME	= delosaioms
PLOT SCALE	= 1/8" = 1'-0"
PLOT DATE	= 12/18/2019

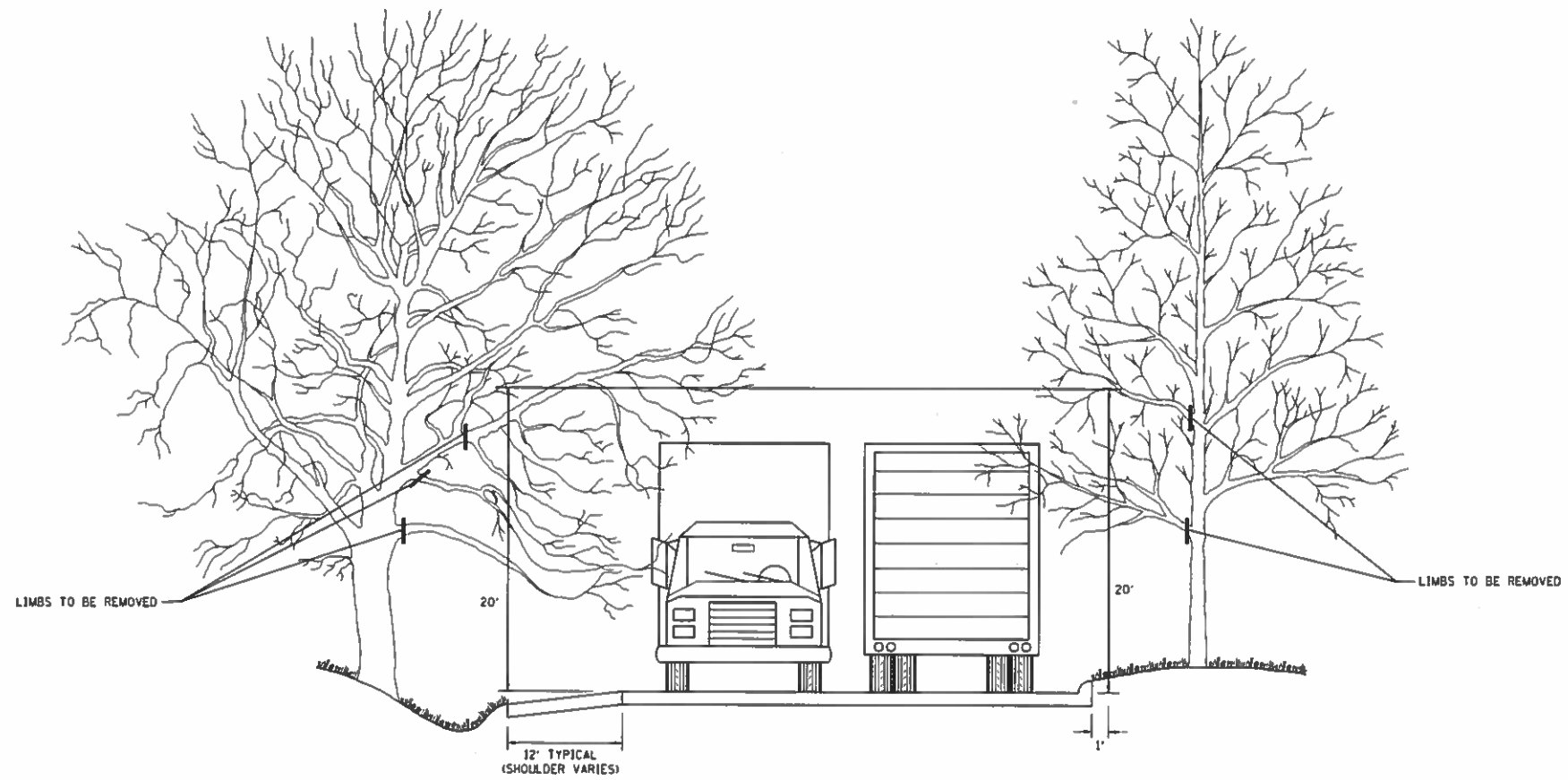
DESIGNED	-
DRAWN	-
CHECKED	-
DATE	-

REVISED	-
REVISED	-
REVISED	-
REVISED	-

STATE OF ILLINOIS
DEPARTMENT OF TRANSPORTATION

DEAD TREE REMOVAL			
STUMP DETAILS			
SCALE	SHEET	OF	SHEETS
	STA		TO STA

F.A. RTE.	SECTION	COUNTY	TOTAL SHEETS	SHEET NO.
VAR	2019-185-1	VARIOUS	8	5
				CONTRACT NO. 62K58
ILLINOIS FED. AID PROJECT				



NOTE: IF A DEAD AND/OR HAZARDOUS LIMB IS FOUND TO BE AT A HIGHER ELEVATION THAN THE PRUNING CLEARANCE REQUIREMENT, THE CONTRACTOR SHALL PRUNE THE LIMB AND THE COST OF WORK SHALL BE INCIDENTAL TO PAY ITEM.

MODEL: P:\E\A\T...
 FILE NAME: D:\...
 PROJECT: ...
 DATE: ...

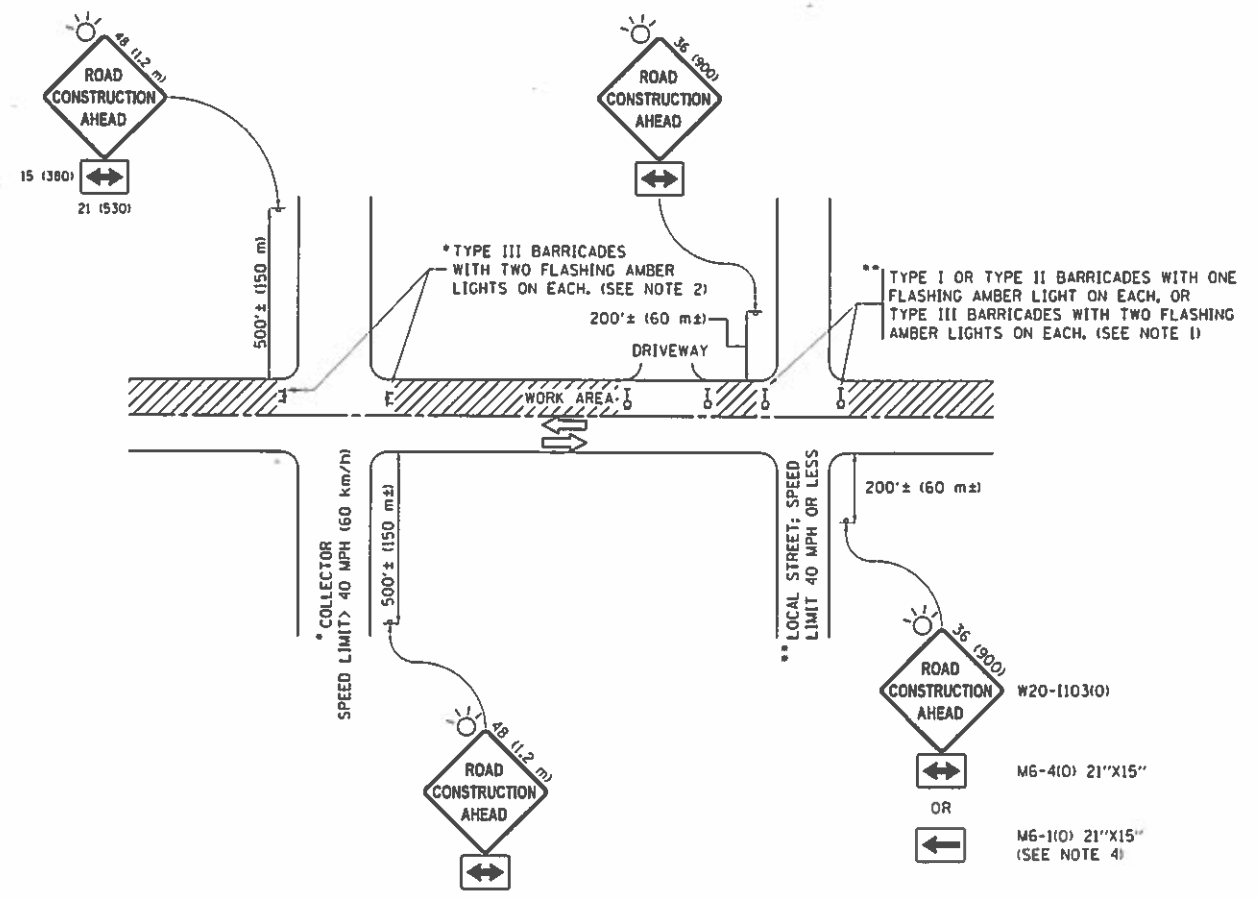
USER NAME = detrosarioms	DESIGNED -	REVISED -
PLOT SCALE = 100 0.477' / in	DRAWN -	REVISED -
PLOT DATE = 12/18/2019	CHECKED -	REVISED -
	DATE -	REVISED -

STATE OF ILLINOIS
DEPARTMENT OF TRANSPORTATION

DEAD TREE REMOVAL
PRUNING FOR SAFETY AND EQUIPMENT CLEARANCE

F.A. RTE.	SECTION	COUNTY	TOTAL SHEETS	SHEET NO.
VAR	2019-185-1	VARIOUS	8	6
CONTRACT NO. 62K58				
ILLINOIS FED. AID PROJECT				

SCALE: _____ SHEET _____ OF _____ SHEETS STA. _____ TO STA. _____



NOTES:

1. SIDE ROAD WITH A SPEED LIMIT OF 40 MPH (60 km/h) OR LESS AS SHOWN ON THE DRAWING AND AS DIRECTED BY THE ENGINEER:
 - a) ONE "ROAD CONSTRUCTION AHEAD" SIGN 36 x 36 (900x900) WITH A FLASHER MOUNTED ON IT APPROXIMATELY 200' (60 m) IN ADVANCE OF THE MAIN ROUTE.
 - b) THE CLOSED PORTION OF THE MAIN ROUTE SHALL BE PROTECTED BY BLOCKING WITH TYPE I, TYPE II OR TYPE III BARRICADES, 1/3 OF THE CROSS SECTION OF THE CLOSED PORTION.
2. SIDE ROAD WITH A SPEED LIMIT GREATER THAN 40 MPH (60 km/h) AS SHOWN ON THE DRAWING AND AS DIRECTED BY THE ENGINEER:
 - a) ONE "ROAD CONSTRUCTION AHEAD" SIGN 48 x 48 (1.2 m x 1.2 m) WITH A FLASHER MOUNTED ON IT APPROXIMATELY 500' (150 m) IN ADVANCE OF THE MAIN ROUTE.
 - b) THE CLOSED PORTION OF THE MAIN ROUTE SHALL BE PROTECTED BY BLOCKING WITH TYPE III BARRICADES, 1/2 OF THE CROSS SECTION OF THE CLOSED PORTION.
3. CONES MAY BE SUBSTITUTED FOR BARRICADES OR DRUMS AT HALF THE SPACING DURING DAY OPERATIONS. CONES SHALL BE A MINIMUM OF 28 (710) IN HEIGHT.
4. WHEN THE SIDE ROAD LIES BETWEEN THE BEGINNING OF THE MAINLINE SIGNING AND THE WORK ZONE, A SINGLE HEADED ARROW (M6-1) SHALL BE USED IN LIEU OF THE DOUBLE HEADED ARROW (M6-4).
5. WHEN WORK IS BEING PERFORMED ON A SIDE ROAD OR DRIVEWAY, FOLLOW THE APPLICABLE STANDARD(S). THE DIRECTIONAL ARROW (M6-1 OR M6-4) SHALL BE COVERED OR REMOVED WHEN NO LONGER CONSISTENT WITH THE TRAFFIC CONTROL SET-UP.
6. ADVANCE WARNING SIGNS ARE TO BE OMITTED ON DRIVEWAYS UNLESS OTHERWISE SPECIFIED IN THE PLANS OR BY THE ENGINEER.
7. THE TRAFFIC CONTROL AND PROTECTION FOR SIDE ROADS, INTERSECTIONS, AND DRIVEWAYS SHALL BE INCLUDED IN THE COST OF SPECIFIED TRAFFIC CONTROL STANDARDS OR ITEMS.

All dimensions are in inches (millimeters) unless otherwise shown.

MODEL: Default FILE NAME: m:\tdm\com\cde\align\gov\FV\DD\1\Documents\1001_01rvt\Drawn\100101rvt.dwg

USER NAME = dntosani	DESIGNED -	REVISED -
PLOT SCALE = 1/8" = 1'	DRAWN -	REVISED -
PLOT DATE = 12/10/2019	CHECKED -	REVISED -
	DATE -	REVISED -

**STATE OF ILLINOIS
DEPARTMENT OF TRANSPORTATION**

**TRAFFIC CONTROL AND PROTECTION FOR SIDE
ROADS, INTERSECTIONS, AND DRIVEWAYS (TC-10)**

SCALE _____ SHEET _____ OF _____ SHEETS STA. _____ TO STA. _____

F.A. RTE	SECTION	COUNTY	TOTAL SHEETS	SHEET NO
VAR	2019-1851	VARIOUS	8	7
CONTRACT NO. 62K58				
ILLINOIS FED AID PROJECT				

